

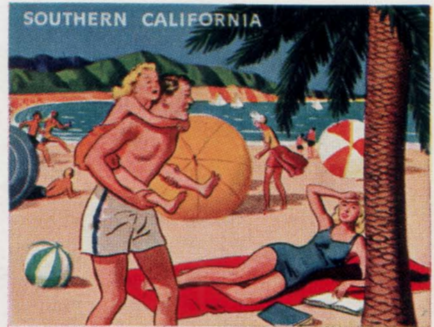
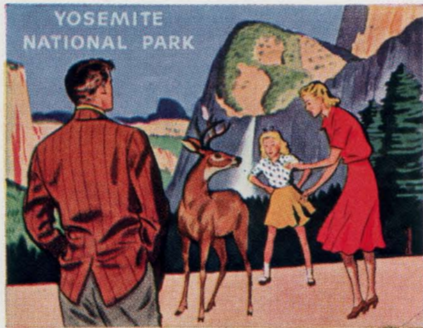
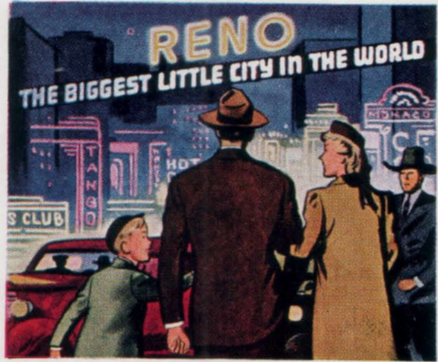


SEE TWICE AS MUCH OF THE WEST

on your trip to the San Francisco World's Fair

On your trip to the San Francisco World's Fair this summer, take one of Southern Pacific's *Four* scenic routes to California; return on another S.P. route and *see twice as much of the West*.

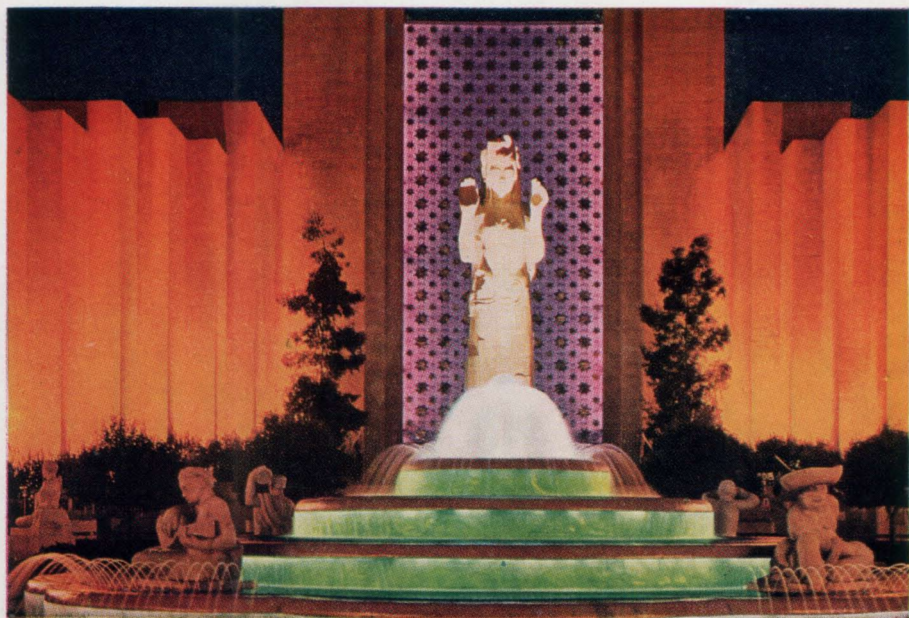
For example, come to the Fair on the historic Overland Route across Great Salt Lake, through Reno and the high Sierra. Take your choice of streamliners, limiteds or friendly economy trains.



After you see San Francisco, the world's largest bridges and explore the Golden Gate International Exposition, return home on another of Southern Pacific's four scenic routes. Above are scenes along Sunset Route (San Francisco-New Orleans) and Golden State Route (Los Angeles-Chicago).

By returning on one of these routes, you'll be able to see Yosemite, the Big Trees, Southern California beaches, Los Angeles, Hollywood, colorful Southern Arizona, spectacular Carlsbad Caverns and (via Sunset Route) gay New Orleans and the Old South.

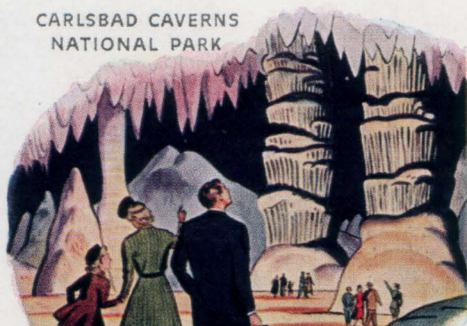




SOUTHERN ARIZONA



CARLSBAD CAVERNS NATIONAL PARK



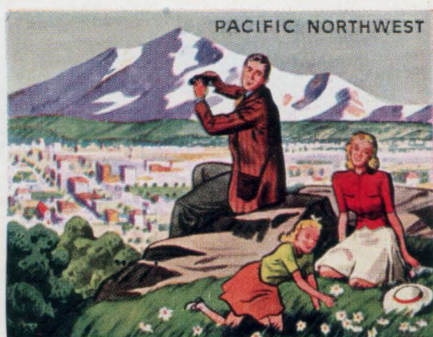
Or you may return on S.P.'s Shasta Route seeing the evergreen Pacific Northwest, with side trips (if you wish) through the Redwood

Empire or to Crater Lake. From most places "a go one way, return another" S.P. ticket costs no more rail fare than an ordinary round trip ticket.

CRATER LAKE NATIONAL PARK



PACIFIC NORTHWEST



Southern Pacific *The Road of Western Hospitality*

