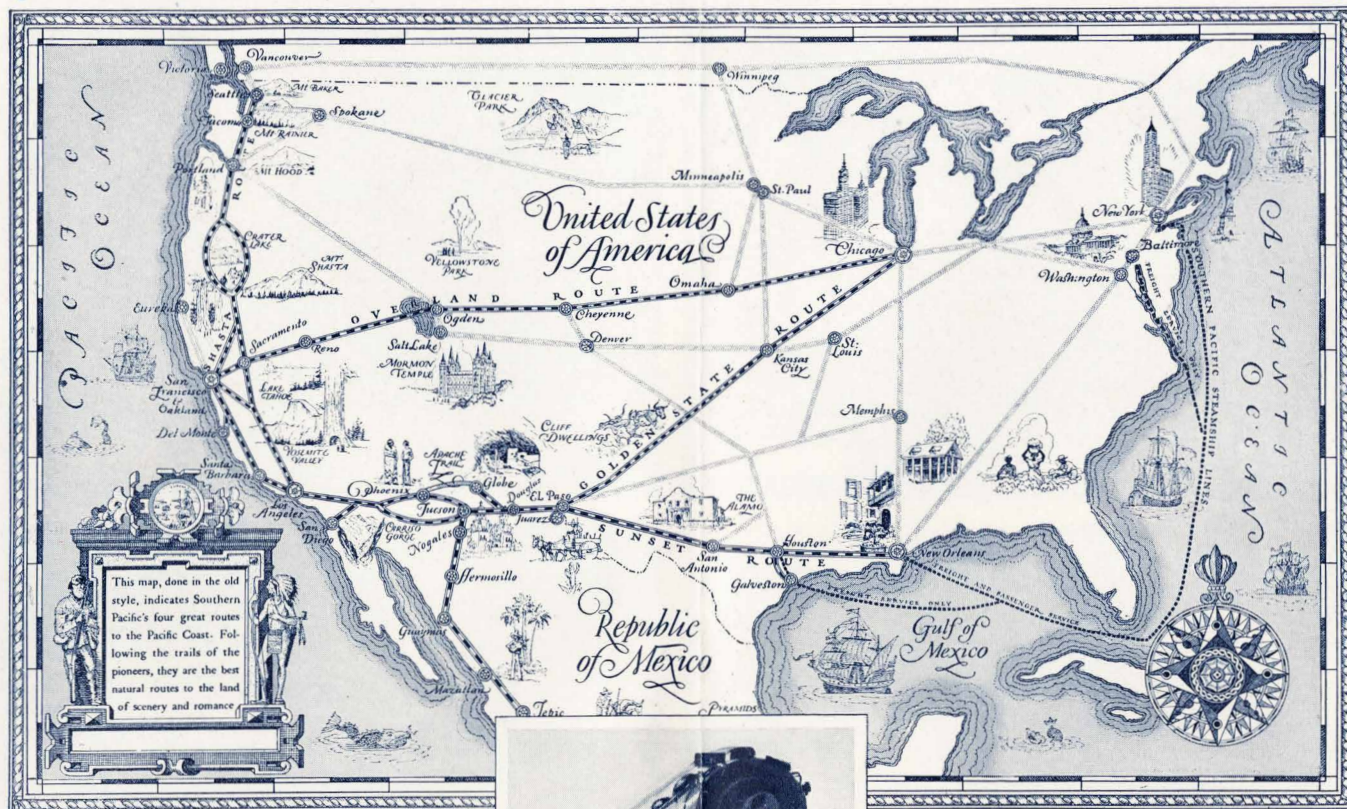


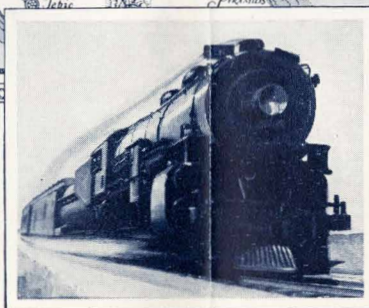
ONLY SOUTHERN PACIFIC OFFERS THIS WIDE CHOICE OF ROUTES



This map in full colors with historic pictorial border, 23 x 32 inches, for 25c (stamps or coin). Address F. S. McGinnis, Dept. 2, Southern Pacific Co., 65 Market St., San Francisco.

Four Great Scenic Routes

Go One Way, Return Another—
and See the Whole Pacific Coast



SOUTHERN PACIFIC offers to the westbound traveler a wide choice of routes going and returning, and a network of rail lines on the Pacific Coast, with convenient connections that afford easy access to all of the points of scenic and romantic interest in America's great playground.

Only the main stems of the principal routes and a few of the outstanding attractions are indicated on the accompanying outline map.

The best way for the traveler to see all of the Pacific Coast is to go west over one Southern Pacific route, return another, and to use the Coast and Valley Lines in California and the Siskiyou

and Cascade Lines of the Shasta Route through Oregon.

In this booklet are separate descriptions of Sunset, Golden State, Overland and Shasta Routes. At the end of the description of each route are several itineraries suggesting optional plans for seeing the points of interest on the Pacific Coast, depending upon the route to be taken in returning East.

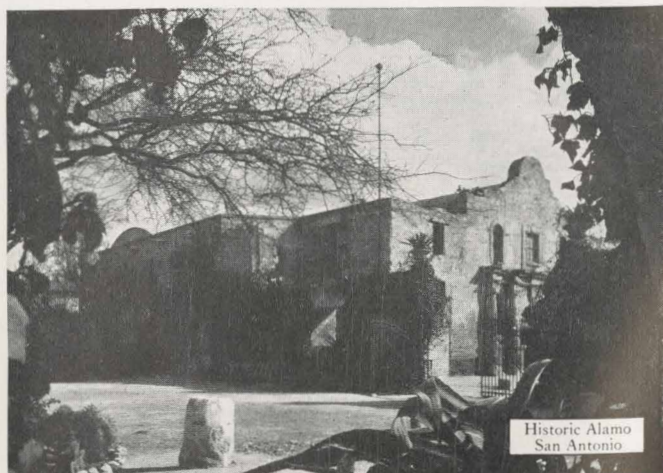
On page 15 is a list of Southern Pacific representatives, who are located in nearly all large cities throughout this country and Europe. These men and their capable staffs will gladly help you arrange the details of your trip.

During your trip you will find Southern Pacific employees everywhere eager to assist you in every way that they can.

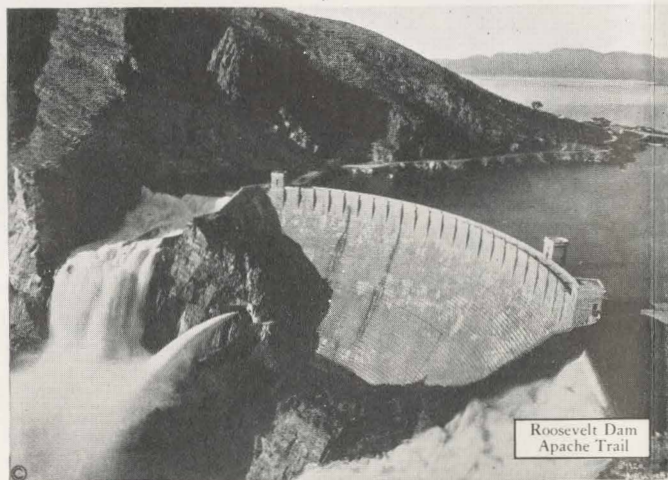
ALONG THE SUNSET ROUTE—NEW ORLEANS TO CALIFORNIA



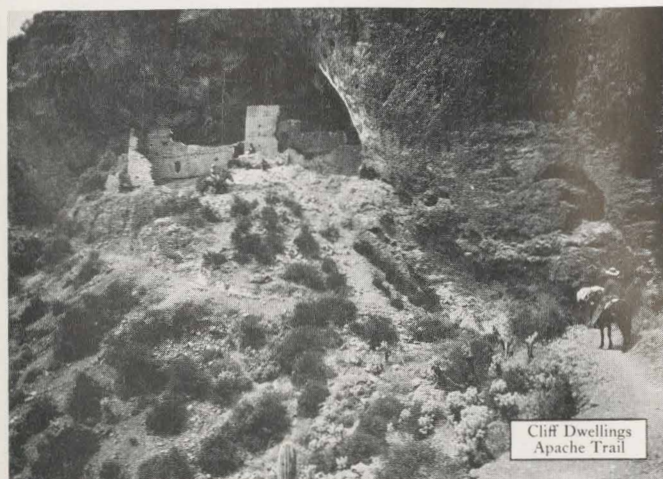
Old Courtyard
New Orleans



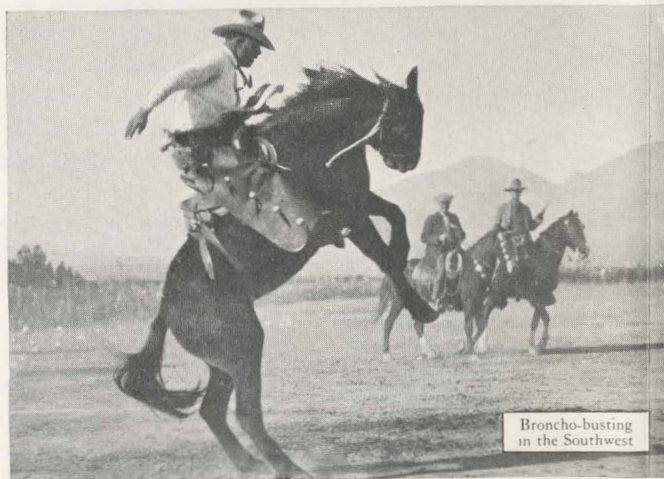
Historic Alamo
San Antonio



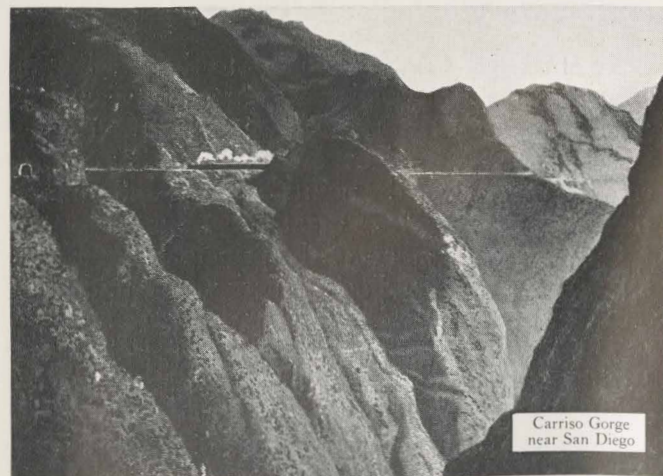
Roosevelt Dam
Apache Trail



Cliff Dwellings
Apache Trail



Broncho-busting
in the Southwest



Carriso Gorge
near San Diego

SUNSET ROUTE

NEW YORK NEW ORLEANS HOUSTON SAN ANTONIO EL PASO LOS ANGELES SAN FRANCISCO

Sunset Route has color and romance. At the ends of its rails are two of America's most distinctive, most truly cosmopolitan cities—New Orleans and San Francisco. From New Orleans west, you find constant reminders that this was first the trail of the Spanish adventurers. Old Spain's influence still lives in the life, color and architecture along the way—clear to San Diego, Los Angeles and San Francisco. The sidetrip over The Apache Trail highway of Arizona is offered by this route. Sunset Route also affords through sleeper service between St. Louis and Los Angeles, New Orleans and San Diego, Los Angeles and Del Monte. The "Sunset Limited" is a train famous the world over among travelers.

YOU have a choice of routes from New York to New Orleans—either by Southern Pacific steamer (Morgan Line), or by rail through the Old South.

By Southern Pacific steamer. Aboard the fine big steel "Dixie," "Creole" or "Momus"—"100 Golden Hours at Sea." Southward along the Atlantic Coast, round Key West, across the Gulf of Mexico, through the Mississippi River delta, and up the river to quaint old New Orleans. Meals and berth aboard ship are included in your through fare. By rail, direct—from New York, through Philadelphia, Baltimore, and Washington, D. C., the capital of the United States; thence over "Washington-Sunset Route" through Lynchburg, Charlotte, Atlanta, Montgomery and Mobile. Another direct route—from New York to Lynchburg, thence via Knoxville, Chattanooga and Birmingham.

New Orleans. A true city of the Old South. City of romance, of atmosphere. Here history lurks in every nook and cranny, for this seaport has lived under five flags. Stately boulevards, aristocratic homes, picturesque market places, quaint coffee shops. The old French quarter. A city of the long ago, yet progressive and prosperous.

Across the Mississippi. Through Louisiana. Live oaks and lazy bayous—touches of appealing beauty. Oil wells; cotton, rice and sugar plantations.

Across Texas, a state so broad that the previous day's "Sunset Limited" is leaving its western side as you enter at the eastern. Houston—inland seaport, made so by the Houston Ship Channel from the Gulf of Mexico. South of Houston, on the Gulf, is Galveston, famous resort city.

San Antonio. Here the historic Alamo of Davy Crockett fame; Mission de la Concepcion, built in 1731, and six other Old Missions.

El Paso. Gateway to Old Mexico, largest city on border. Great Elephant Butte Dam nearby. Juarez—five minutes' trolley ride across the border in Old Mexico, where you find quaint glimpses of a different civilization.

The Apache Trail highway of Arizona

Bowie, where you start over branch line for the trip over The Apache Trail highway—delightful one-day break in your transcontinental journey. Globe, near which 41 per cent of the country's copper is produced. Here you start over The Apache Trail highway—120 miles by comfortable motor coach on a smooth highway through a region of weird beauty. A region once the domain of terrorizing bands of Apaches, savage rulers of this fascinating land. Prehistoric Indian pottery and cliff dwellings. Mysterious ruins. Strange picture carvings in rock. Cleft peaks and shaded valleys, great cliffs, ramparts and temples weirdly painted by passing ages, canyons with bronzed walls of metallic brilliance. Huge Roosevelt Dam, keywork in a vast irrigation program. Three great man-made lakes—Roosevelt, Apache and Canyon—forming a chain that reaches 53 miles through this desert-mountain wilderness. A lush valley—The Salt River Valley, transformed by irrigation from desert into garden. In the midst of this valley—Phoenix, where you board "Sunset Limited" again.

Also to be seen in Arizona—Chiricahua "wonderland of rocks," reached from Douglas; Casa Grande Ruins (prehistoric habitations); Tucson and Nogales, gateways to the West Coast of Mexico; Mission San Xavier, near Tucson. Desert winter resorts and guest ranches.

On through the "Far West"—a fabled land, a story land. Still a country of pioneers. Cowboys. Indians. A great sweep of rich new territory just opened for development with the recent completion of a new Southern Pacific main line through Southern Arizona via Phoenix.

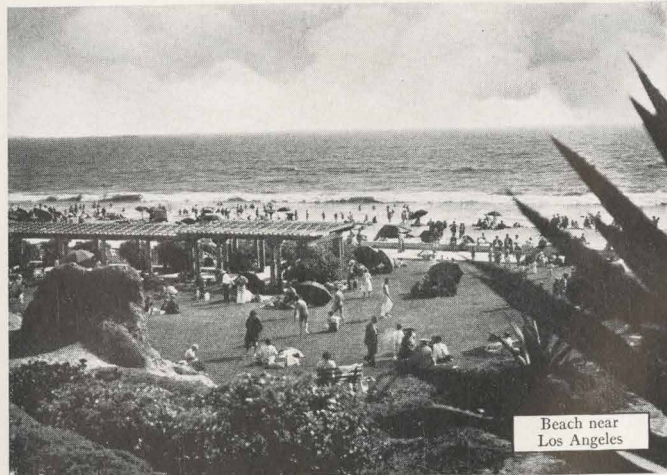
Imperial Valley, California—another "Garden of Eden," wrought by irrigation.

If you wish, direct by through car to San Diego via

CALIFORNIA'S FAMOUS PLAYGROUNDS—ALONG SUNSET ROUTE



Making "movies"
Hollywood



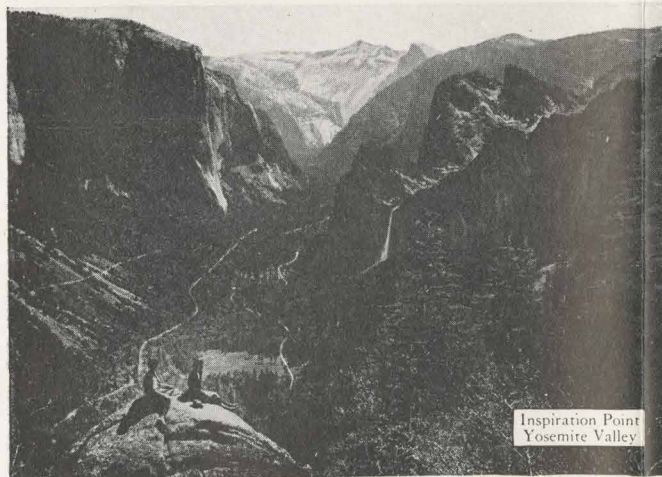
Beach near
Los Angeles



Mission
Santa Barbara



Carmel Bay
Monterey Peninsula



Inspiration Point
Yosemite Valley



Chinatown
San Francisco

TRAVEL FROM NEW YORK TO CALIFORNIA OVER SUNSET ROUTE

SUNSET ROUTE—Continued

Tijuana, Old Mexico—enjoying wonderful Carriso Gorge en route. Through Carriso Gorge your train runs along the edge of a cliff, from which you look down a sheer drop to the winding stream far below.

Continuing on the main line toward Los Angeles. Salton Sea, blue and deep, far below the level of the ocean. Once the northern end of the Gulf of California—but now a veritable dead sea, and strikingly picturesque.

La Quinta, Palm Springs, and other delightful desert winter resorts, served only from Southern Pacific rails.

Then the orange country—the California you've read and heard about. Green-and-gold groves, the trim trees in serried ranks. And always a background of mountains, some capped with snow. Clean, new-looking cities, contrasting with ancient missions. Dry arroyos. And then—

Los Angeles. A home city, a resort city, with a dozen famous beaches and many attractive mountain places nearby. Here you find the atmosphere of play, for Southern California is an alluring playground at any season. Nearby—Hollywood, where "movies" are made; Mt. Lowe, Orange Empire, Catalina.

Northward to San Francisco over scenic Coast Line. In all the world no rail trip offers a greater variety of scenic, romantic and historic interest. The rails follow "El Camino Real" (The King's Highway), the route trod by the padres in traveling up and down the coast between Missions. Only Southern Pacific rails follow this trail between the Old Missions. For 113 miles of the way right along the shore of the blue Pacific. Charming cities and towns, orchards and farms, hills and broad level stretches, magnificent panoramas of mountain and seashore, smooth white beaches and rugged rock-bound bits of coast—all unfold before you from your seat on the observation platform. En route—lovely, lulling Santa Barbara; Paso Robles Hot Springs; Del Monte Junction, from which you may go to the famous Monterey Peninsula with its picturesque settlements—Carmel-by-the-Sea, Del Monte, Pebble Beach, Monterey and Pacific Grove; Santa Cruz beach, mountains and Big Trees; the orchards of the Santa Clara Valley; the charming cities and towns of the San Francisco Peninsula.

Or, if you prefer, from Los Angeles to San Francisco over Southern Pacific's San Joaquin Valley Line—crossing the Tehachapi Mountains over Southern Pacific's famous "loop," a railroad engineering feat.

Northward through the San Joaquin Valley which, with the Sacramento Valley to the north, forms the *Great Central Valley* of California—extending from the Tehachapi Mountains on the south to Mt. Shasta on the north, from the Sierra Nevada Mountains on the east to the Coast Range on the west. In this Great Central Valley are millions of acres of the most productive land in the world. Orchards, gardens, farms, ranches. Vast oil fields.

Nearby—Mt. Whitney, highest peak in continental United States, and Sequoia and General Grant National Parks. Also Big Trees (*Sequoia Gigantea*.)

Fresno, famous for its raisins.

Merced, year-round gateway to Yosemite Valley via Yosemite Valley R. R. Through overnight sleepers are operated, daily, by Southern Pacific between Los Angeles and Yosemite, and between San Francisco and Yosemite—saving a day at Yosemite for sightseeing and pleasure.

Yosemite is connected with that other Sierra jewel, Lake Tahoe, by the historic Tioga Road, over which safe, comfortable motor stages run daily during the summer season. From Lake Tahoe you proceed, via Truckee, over Southern Pacific's Overland Route (Lake Tahoe Line) to San Francisco or other destination. Southern Pacific operates through overnight sleepers between Tahoe's shore and San Francisco during both summer and winter seasons—saving a day at Tahoe for sightseeing and pleasure.

Port Costa; then along the shore of San Francisco Bay to Berkeley, seat of the University of California, and to Oakland, great and beautiful city. Here you board a Southern Pacific ferry and cross San Francisco Bay, one of the world's great land-locked harbors, to—

San Francisco, gleaming upon the hills beside the Golden Gate. A gay city. A cosmopolitan city. A city of life and color. One of the world's most fascinating cities.

In San Francisco, charming playgrounds and scores of places of scenic and historic interest await you. On San Francisco Bay, sailing and motorboating. San Francisco is also the starting point for famous playgrounds throughout Central and Northern California, including Yosemite, Tahoe Lake Region, Redwood Empire, Russian River country, Monterey Peninsula, and Mt. Tamalpais and Muir Woods. It is also a gateway to Hawaii, the Orient, Australia and New Zealand.

* * * * *

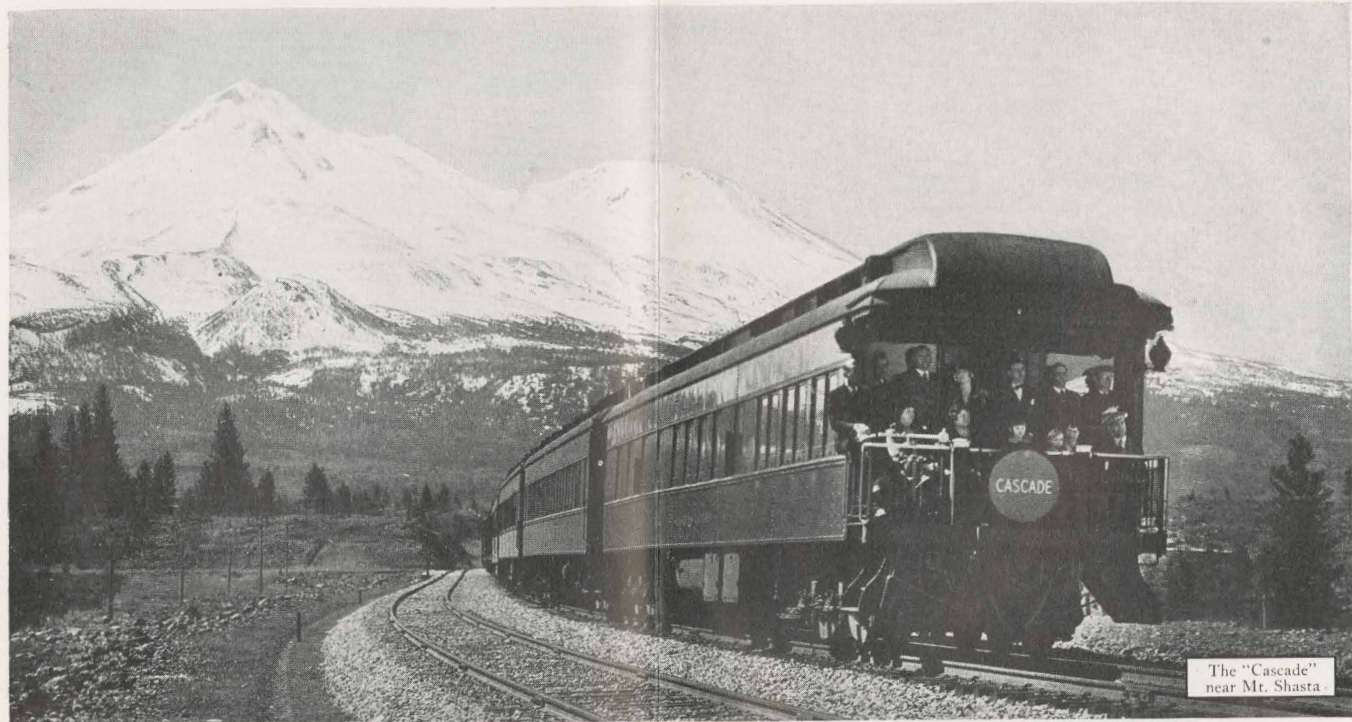
Upon arrival in San Francisco over Sunset Route, the traveler wishing to see the whole Pacific Coast has a choice of 3 itineraries—depending upon which route he wishes to use in returning east:

(1) *If he wishes to return over northern lines* (either through the United States or Canada), he may go on from San Francisco to the Pacific Northwest over either new Cascade Line or Siskiyou Line of Shasta Route, and thence east.

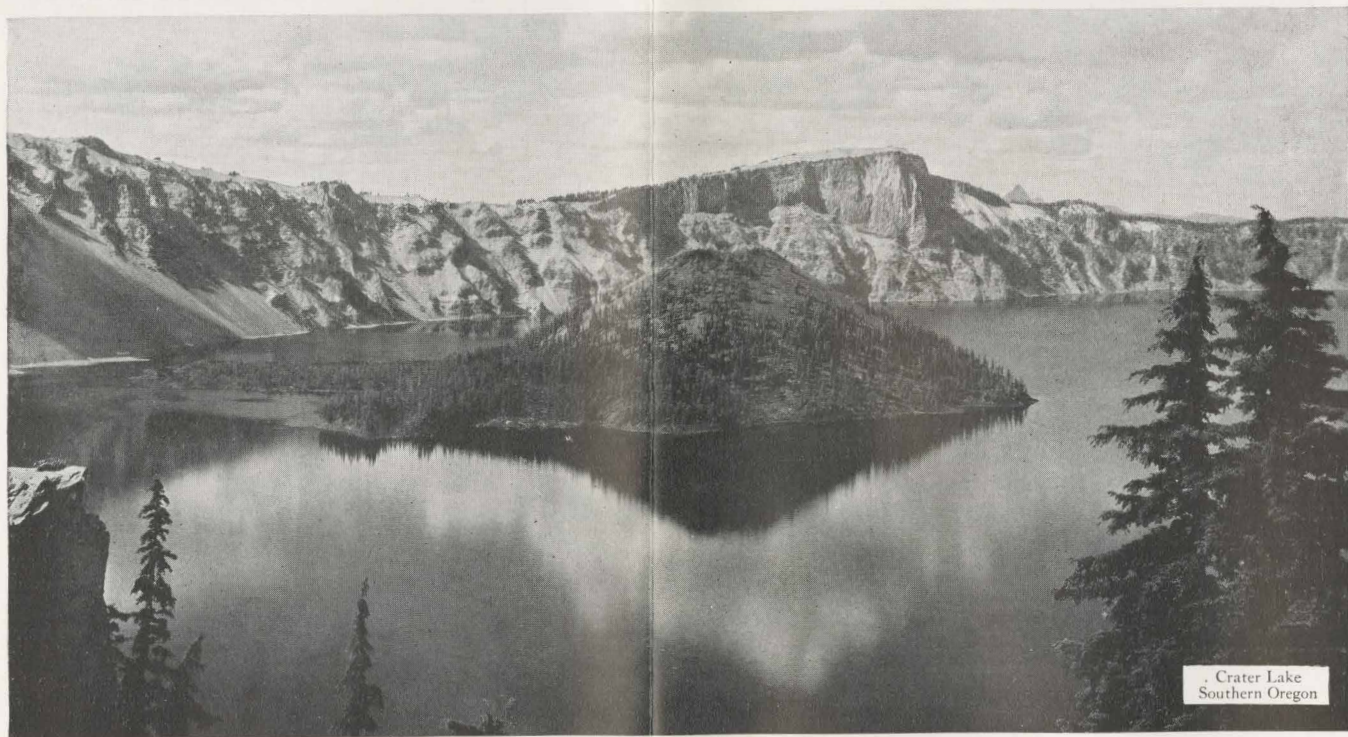
(2) *If he wishes to return over Overland Route (Lake Tahoe Line)*, he may go on from San Francisco to the Pacific Northwest over new Cascade Line of Shasta Route, thence return to San Francisco over Siskiyou Line of Shasta Route, and thence east.

(3) *If he wishes to return over Golden State Route*, he may go on from San Francisco to the Pacific Northwest over new Cascade Line of Shasta Route, thence return to California over Siskiyou Line of Shasta Route, thence to Southern California over San Joaquin Valley Line, and thence east.

THE "CASCADE", PREMIER TRAIN THROUGH SCENIC OREGON



The "Cascade"
near Mt. Shasta



Crater Lake
Southern Oregon

SHASTA ROUTE

SAN FRANCISCO

PORTLAND

PACIFIC NORTHWEST

Shasta Route bears the name of one of the world's most glorious mountains—Mt. Shasta. It is the route that takes the traveler to Crater Lake. Along Shasta Route you find mountains, canyons, valleys, rivers, waterfalls, springs and lakes. The "Cascade" travels over Shasta Route between San Francisco and Portland on a 22-hour schedule. Shasta Route also offers you through sleeper service between Los Angeles and Seattle.

FOR northbound Shasta Route trip—leave Ferry Building, San Francisco. Across San Francisco Bay to Oakland. Berkeley. Port Costa, where your train is ferried across Carquinez Straits on the Southern Pacific ferry "Solano" or "Contra Costa," the largest train ferries in the world, to Benicia, historic capital of California in 1853-54.

Northward through the Sacramento Valley. On the skyline, to the east—Lassen Peak, the only active volcano in continental United States. Lassen Volcanic National Park contains great forests, streams, waterfalls, lakes, and hundreds of boiling springs and geysers.

Through the picturesque Sacramento River Canyon. At Castella you get a wonderful view of Mt. Shasta, seen only from Southern Pacific rails, rearing its snow-mantled bulk 14,161 feet skyward on the north. For four hours or more, as you travel northward, Mt. Shasta is a glorious sight from your car window.

Black Butte. From here to Eugene, Ore., you have a choice of two main lines—new Cascade Line, running through a vast virgin region where deer, cougar, bear, grouse and quail previously lived almost undisturbed; and Siskiyou Line, through the beautiful Rogue, Umpqua and Willamette river valleys.

Thru a Vast Virgin Region

New Cascade Line passes through Klamath Falls, gateway to Crater Lake National Park, on the crest of the Cascade Range; skirts Klamath Lake; runs along the shore of Odell Lake, crosses the Cascade Mountains, and runs down the canyon of the Upper Willamette River to Eugene. Towering mountain peaks, great forests, turbulent streams and dashing waterfalls en route, and lovely lakes—Odell, Crescent and Diamond lakes, magnificent stretches of upland water, and hundreds of smaller, sparkling lakes.

Siskiyou Line—northward from Black Butte. Over the forested Siskiyou and down into the beautiful Rogue River Valley to Medford—center of thousands of acres of orchards and farms, and another gateway to Crater Lake National Park.

Crater Lake, six miles across and 2000 feet deep, with precipitous walls rising over 1000 feet from the water's edge to the rim, lies in the crater of an extinct volcano 6177 feet above sea level. Aside from its great scenic attractions, Crater Lake is recognized as one of the natural wonders of the world—a mysterious and beautiful body of water of a glorious and ever-changing blue.

Over a divide and through the Umpqua Valley. Orchards, berry farms and dairy ranches, encircled by timbered hills. Over the Calapooya Mountains and into the Willamette Valley. Eugene, where new Cascade Line and Siskiyou Line meet again; the University of Oregon is here. Salem, capital of Oregon. Chemawa, site of the Government Indian School, where 600 students are taught various trades. Oregon City; to the west you see the Falls of the Willamette; from below these falls Royal Chinook salmon weighing from 30 to 50 pounds are taken with rod, reel and spoon.

Portland. Southern gateway to Pacific Northwest country. Famous for its Rose Festival, held annually in June. From here you take the drive over the world-famous Columbia River Highway and visit Mt. Hood.

Northward through the Evergreen Playground. Tacoma and Seattle. Puget Sound, dotted with wooded islands; gateway to Alaska. Magnificent Mt. Rainier and Mt. Baker, with their picturesque mountain lodges. Then on to Victoria and Vancouver, in British Columbia, with their quaint touches of old England.

* * * * *

Upon arrival in the Pacific Northwest over either new Cascade Line or Siskiyou Line of Shasta Route, the traveler may return east over any one of several northern lines in the United States or Canada.

Or, if he wishes to see still more of the Pacific Coast, he has a choice of 2 itineraries—depending upon which Southern Pacific route he wishes to use in returning east:

(1) *If he wishes to return over Overland Route (Lake Tahoe Line),* he may return to San Francisco over the alternate line of Shasta Route, and thence east.

(2) *If he wishes to return over either Sunset or Golden State route,* he may return to San Francisco over the alternate line of Shasta Route, thence to Southern California over either scenic Coast Line or San Joaquin Valley Line, and thence east.

The Best Way to See the Pacific Coast

SOUTHERN PACIFIC's principal main lines and connections on the Pacific Coast, with a few of the chief points of interest in this region, are indicated on this pictorial map:

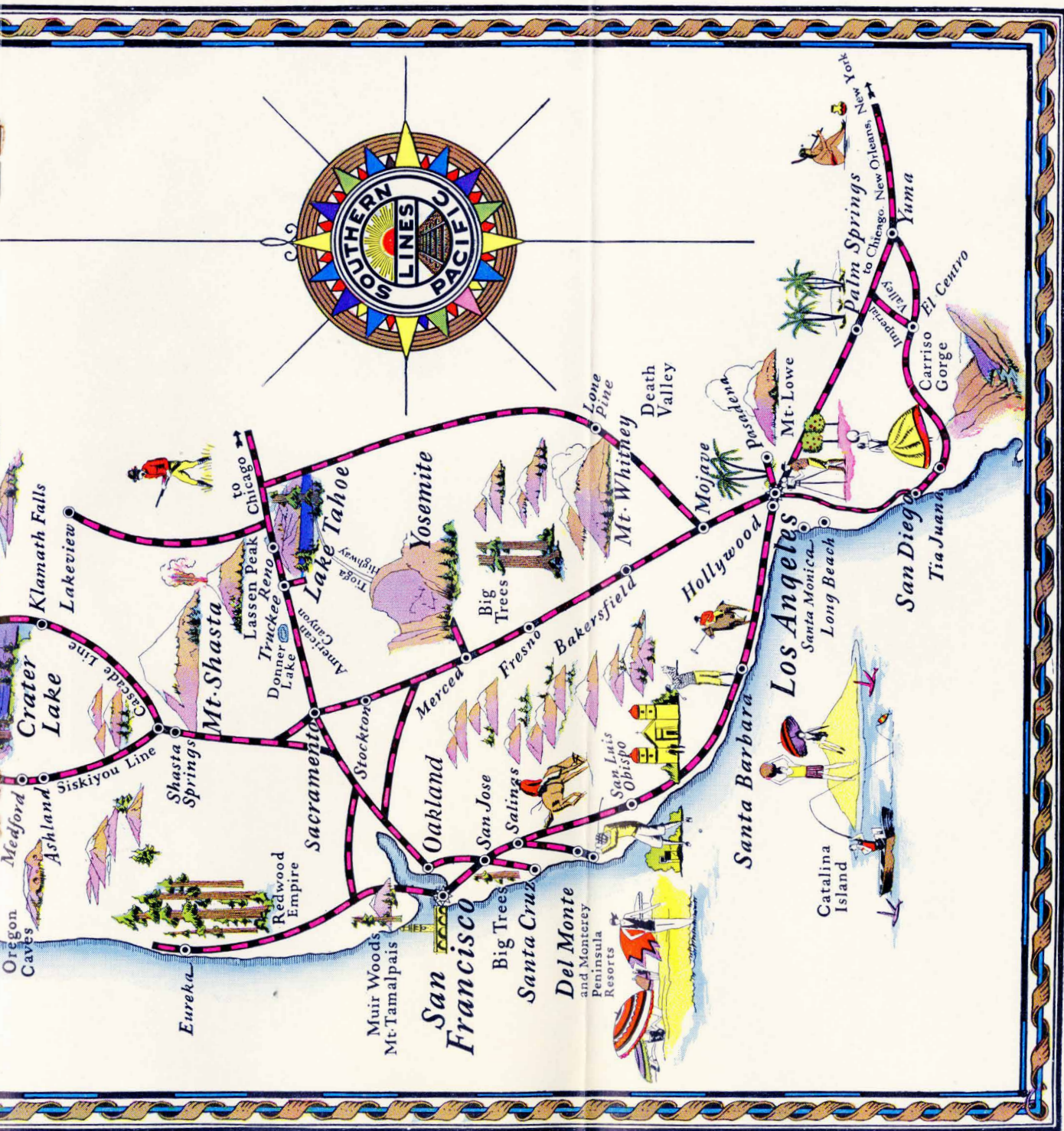
Two lines between Los Angeles and San Francisco—the scenic Coast Line, right along the ocean shore, serving, among other points, Santa Barbara, Monterey Peninsula and Bay resorts; and San Joaquin Valley Line, serving Sequoia, General Grant, and Yosemite National Parks; and

Two lines of the Shasta Route through Oregon—spectacular new Cascade Line via Klamath Falls; and Siskiyou Line via Medford, both having glorious Mount Shasta en route and both serving Crater Lake National Park.

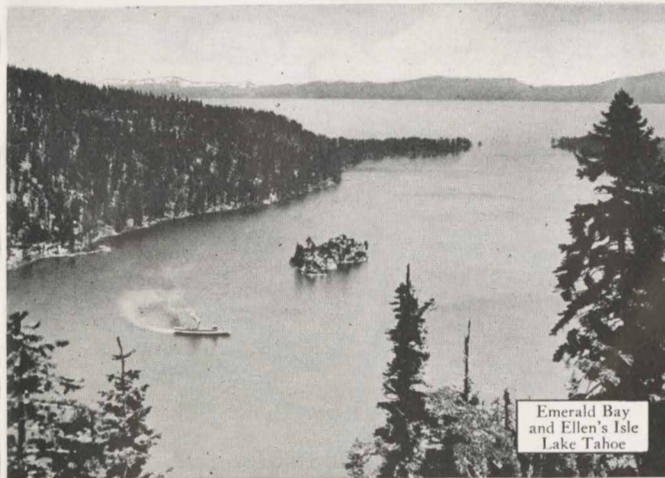
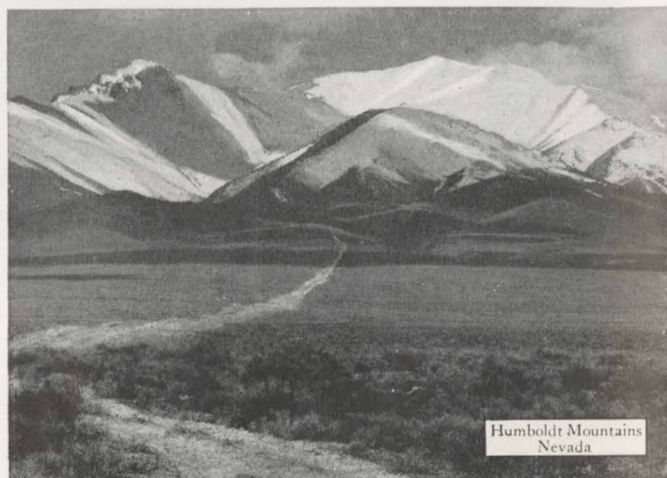
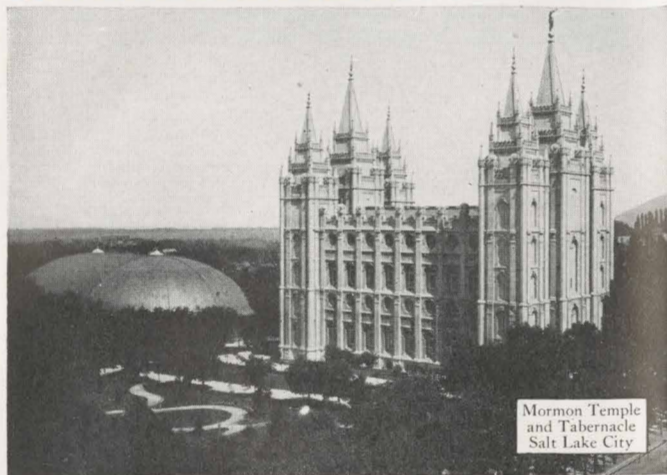
Along Southern Pacific lines, served directly or easily accessible by inexpensive sidetrip, are all of the famous resorts and scenic wonders of the Pacific Coast, only a few of which could be shown here. Playgrounds in the mountains, not served directly by Southern Pacific rails, such as Crater Lake, are reached by safe, comfortable motor stages connecting with Southern Pacific trains. Your nearest Southern Pacific agent will arrange tickets for you, and your baggage will be checked through to your destination. With all travel details arranged for you, you are free to relax and enjoy the trip. Thus you travel the safe, quick, easy, comfortable way.



FULL information about stopovers, Pullman service, fares, trains, schedules, etc., may be obtained from the Southern Pacific agents on page 15 of this booklet



LOVELY LAKE TAHOE—ON SOUTHERN PACIFIC'S OVERLAND ROUTE



OVERLAND ROUTE [Lake Tahoe Line]

CHICAGO

OMAHA

OGDEN

RENO

SAN FRANCISCO

Overland Route, straight across the center of the country, is the shortest and most direct route between Chicago and San Francisco. Overland Route follows the historic trail made by the covered wagons during the gold rush to California of 1849—the route of the pony express—the line of the first transcontinental railroad. The "San Francisco Overland Limited" travels over Overland Route from Chicago to San Francisco on a 63-hour schedule. Overland Route also offers you through sleeper service between St. Louis and San Francisco, Kansas City and San Francisco, Denver and San Francisco, and between Chicago and Los Angeles via San Francisco and Santa Barbara.

CHICAGO. Across Illinois. Iowa and its rich farms. Council Bluffs. Omaha. Across Nebraska. Across the great plains of Wyoming. Utah, where the Mormons have converted desert into a great empire. Ogden, near which are the picturesque Weber and Ogden canyons. Stopover allowed on all Southern Pacific tickets for sidetrip to Yellowstone Park, a night's ride from Ogden. If you wish, a short free side trip from Ogden to Salt Lake City—capital of Utah. Here are the Mormon Temple, which took forty years to build, and the great Tabernacle, constructed entirely without metal nails.

Just west of Ogden you actually "go to sea by rail" over Southern Pacific's famous "cut-off" across Great Salt Lake. On Antelope Island, seen from your car window, is one of the few remaining large herds of buffalo.

Nevada. Gold, silver, copper mines; desert reclaimed through irrigation; guest ranches, offering opportunity to "rough it" de luxe. From Reno is a sidetrip along weird Pyramid Lake to Lassen Volcanic National Park in California.

Up the eastern slope of the Sierra Nevada range. Boca, favorite spot for fishermen. Truckee, famous for its winter sports carnival; junction point for Lake Tahoe, served only by Southern Pacific rails, 12 miles south. Here, in winter, are taken many of the "Far North" scenes you see in "movies."

Lake Tahoe! A lake 6226 feet above sea level on the summit of the snow-capped Sierra range. Here, in summer, are golf, tennis, dancing, riding, bathing, aquaplaning, boating, fishing, hunting, hiking, mountain-climbing, steamer rides around the lake, and other favorite sports. In winter, a colorful carnival of winter sports.

Tahoe is connected with Yosemite Valley and the Mariposa Grove of Big Trees by a picturesque and amazing highway—the Tioga Road, over which motor stages run daily during the summer season. From Yosemite, you may rejoin Southern Pacific's line at Merced to go on to San Francisco, Los Angeles or other destination. (See column 2, page 5, for details of through sleeper service between Tahoe and San Francisco, between Yosemite and

San Francisco, and between Yosemite and Los Angeles.)

On the Overland Route main line again. Just west of Truckee you cross the rugged crests of the Sierra Nevada mountains. Donner Lake, scene of an historic tragedy in the days of the Overland Trail, but now another playground. American, where a 5-minute stop enables you to revel in the beauty of the American River Canyon.

Then, in the foothills, come the gold fields of '49—still scarred in spots from the early mining operations. This is the land whose charm inspired Rudyard Kipling, John Muir, Robert Louis Stevenson, Bret Harte, Mark Twain, Jack London and Edwin Markham.

The descent into the Sacramento Valley. Sacramento. Benicia. Across Carquinez Straits to Port Costa. Berkeley. Oakland. Across San Francisco Bay to San Francisco.

* * * * *

Upon arrival in San Francisco over Overland Route, the traveler wishing to see the whole Pacific Coast has a choice of 3 itineraries—depending upon which route he wishes to use in returning east:

(1) *If he wishes to return over either Sunset or Golden State route*, he may go on from San Francisco to the Pacific Northwest over new Cascade Line of Shasta Route, thence return to San Francisco over Siskiyou Line of Shasta Route, thence to Southern California over either scenic Coast Line or San Joaquin Valley Line, and thence east.

(2) *If he wishes to return over northern lines* (either through the United States or Canada), he may go on from San Francisco to Southern California over scenic Coast Line, thence return to San Francisco over San Joaquin Valley Line, thence to the Pacific Northwest over either new Cascade Line or Siskiyou Line of Shasta Route, and thence east.

(3) *If he wishes to return over Overland Route*, he may—

(a) Go on from San Francisco to the Pacific Northwest over new Cascade Line of Shasta Route, thence return to San Francisco over Siskiyou Line of Shasta Route, thence to Southern California over scenic Coast Line, thence return to San Francisco over San Joaquin Valley Line, and thence east; or—

(b) He may reverse this routing by first going on to Southern California over scenic Coast Line, thence return to San Francisco over San Joaquin Valley Line, thence to Pacific Northwest over new Cascade Line of Shasta Route, thence return to San Francisco over Siskiyou Line of Shasta Route, and thence east.

GOLDEN STATE ROUTE CROSSES THE PICTURESQUE SOUTHWEST



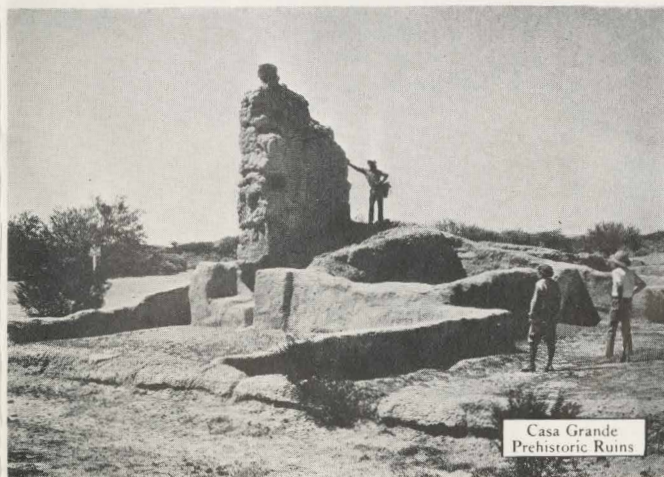
Juarez
Old Mexico



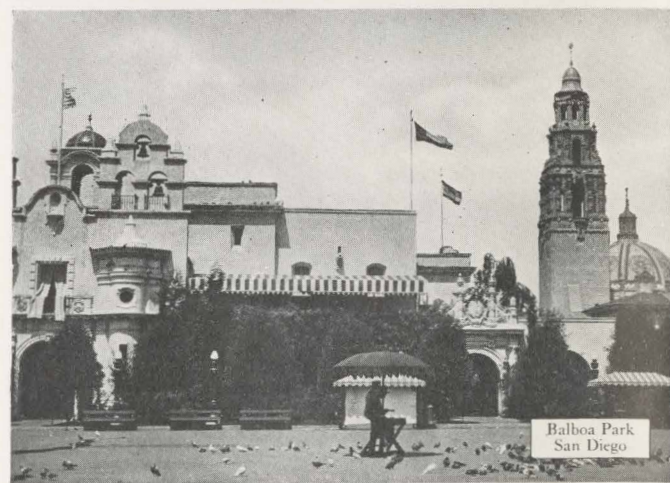
Mission San Xavier
near Tucson



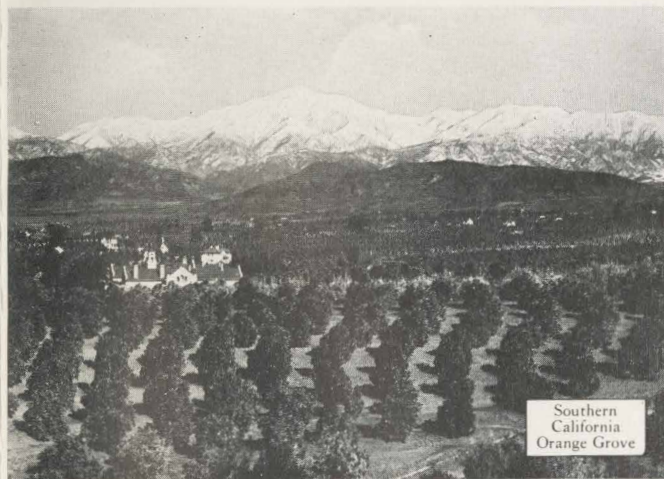
Yaqui Rite
Dancers



Casa Grande
Prehistoric Ruins



Balboa Park
San Diego



Southern
California
Orange Grove

GOLDEN STATE ROUTE

CHICAGO

KANSAS CITY

EL PASO

PHOENIX

LOS ANGELES

"Golden State" means the finest service on the direct route between Chicago and Los Angeles. There is none faster. Golden State Route is the "low altitude" direct line over prairie and painted mesa from Chicago and Mississippi Valley cities to Southern California. It offers The Apache Trail highway sidetrip in Arizona. The "Golden State Limited" travels over Golden State Route from Chicago to Los Angeles on a 63-hour schedule. Golden State Route also offers through sleeper service between Minneapolis-St. Paul and Los Angeles, St. Louis and Los Angeles, Memphis and Los Angeles, Chicago and San Diego, Chicago and Santa Barbara.

CHICAGO. Through rich farm lands, the market basket of millions of people—Illinois, Iowa, Missouri and Kansas.

At Rock Island you cross the Mississippi River. Here was constructed, in 1855, the first bridge to span that mighty stream. As you cross over today's modern steel structure you see a crumbling pile of masonry on the island to the north—all that remains of that first bridge.

At Kansas City you cross the Missouri River. Here through sleepers from St. Louis, Minneapolis and St. Paul join us to travel over Golden State Route to Los Angeles. Topeka, capital of Kansas.

Across the northwest corner of Oklahoma and Texas.

New Mexico. Tucumcari, where the Memphis-to-Los Angeles through sleeper joins us. From Alamogordo, a delightful side-trip, during summer months, to Cloudcroft, served only by Southern Pacific rails, beautiful and cool resort on a forested mountain top. Nearby, the Mescalero Apache Indian reservation.

El Paso. From here to Los Angeles, Golden State Route is over the same rails as Sunset Route. (*See Sunset Route from El Paso west, page 3, for details as to points of scenic, romantic and historic interest during the remainder of your journey over Golden State Route.*)

Over Golden State Route you have the same options given in Sunset Route as to the sidetrip over The Apache Trail highway of Arizona, and the trip through spectacular Carriso Gorge to San Diego. And if you wish, you may go on from Los Angeles to Santa Barbara, served only by Southern Pacific rails, direct by through car over Southern Pacific's scenic Coast Line, with your train running right along the shore of the blue Pacific during the last 28 miles of the way.

Through a Rich New Territory

Also, in traveling over Golden State Route, you have the same opportunity as travelers over Sunset Route to see the great sweep of rich new territory thrown open for development with the recent completion of a new Southern Pacific main line through Southern Arizona via

Phoenix. This new Southern Pacific main line gives easy access to a part of Arizona that was unknown until recently to all but a few mining prospectors and other adventurous souls to whom lack of trails presented no obstacle to travel. It also traverses a most picturesque section of Arizona—land of desert and fertile farms, prehistoric cliff dwellings and modern tourist hotels, resorts and guest ranches; forests, mines, and stock ranches; cowboys, Indians and mining prospectors; Old Missions and alert, progressive cities and towns; fish and game, unique scenery; opportunity for the settler, the colonist, the seeker after health; and last, but by no means least, the colorful Apache Trail highway.

At the end of Golden State Route is the great playground of Southern California—Santa Catalina Island, the Orange Empire, Mt. Lowe; "Rim of the World Drive;" Pasadena and Beverly Hills; Hollywood, where "movies" are made; the beaches at Santa Monica, Venice, Playa del Rey, Hermosa Beach, Redondo Beach, Long Beach, Newport, Laguna Beach. With Los Angeles city as a starting point, the traveler may spend many delightful days in this region. The Pacific Electric Railway and paved highways lead in all directions.

* * * * *

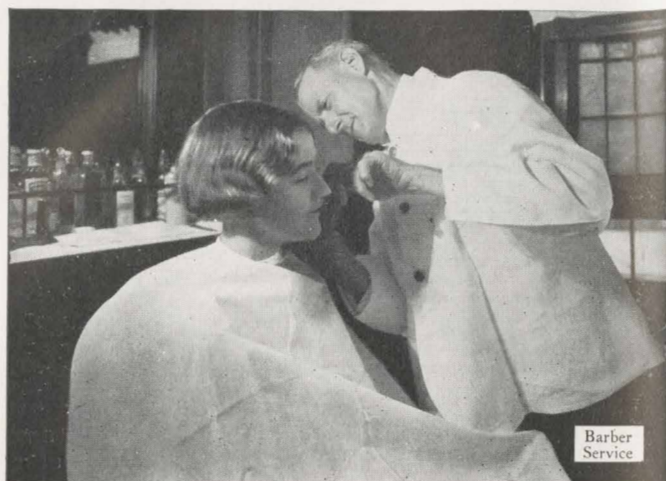
Upon arrival in Southern California over Golden State Route, the traveler wishing to see the whole Pacific Coast has a choice of 3 itineraries—depending upon which route he wishes to use in returning east:

(1) *If he wishes to return over northern lines* (either through the United States or Canada), he may go on to San Francisco over either scenic Coast Line or San Joaquin Valley Line, thence to the Pacific Northwest over either new Cascade Line or Siskiyou Line of Shasta Route, and thence east.

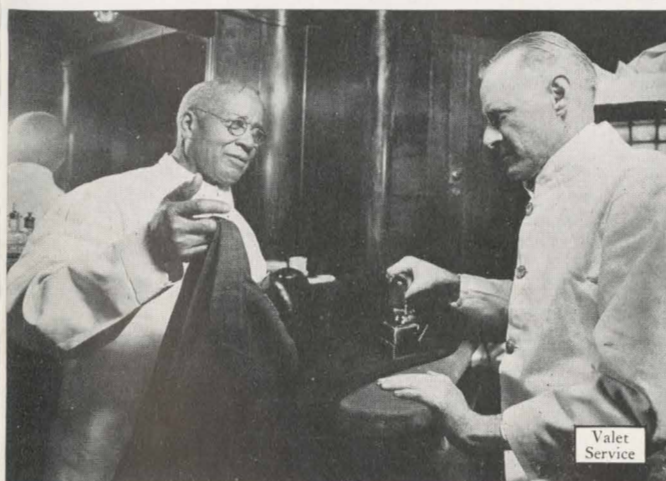
(2) *If he wishes to return over Overland Route (Lake Tahoe Line)*, he may go on to San Francisco over either scenic Coast Line or San Joaquin Valley Line, thence to Pacific Northwest over new Cascade Line of Shasta Route, thence return to San Francisco over Siskiyou Line of Shasta Route, and thence east.

(3) *If he wishes to return over Sunset Route*, he may go on to San Francisco over scenic Coast Line, thence to Pacific Northwest over new Cascade Line of Shasta Route, thence return to San Francisco over Siskiyou Line of Shasta Route, thence to Southern California over San Joaquin Valley Line, and thence east.

EVERY TRAVEL CONVENIENCE IS YOURS ON SOUTHERN PACIFIC



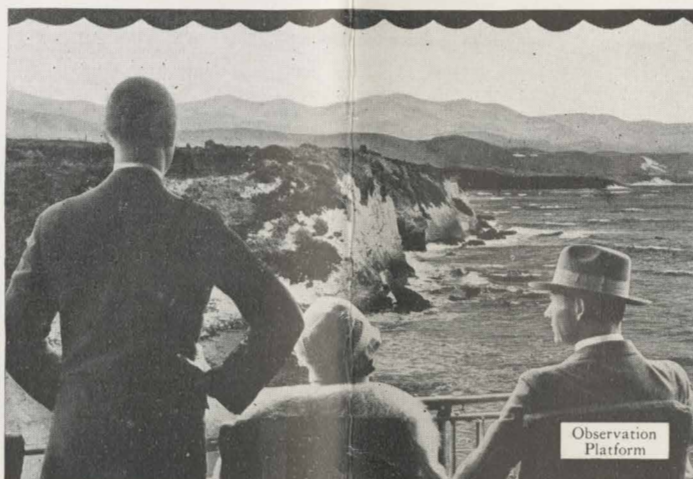
Barber Service



Valet Service



Women's Shower



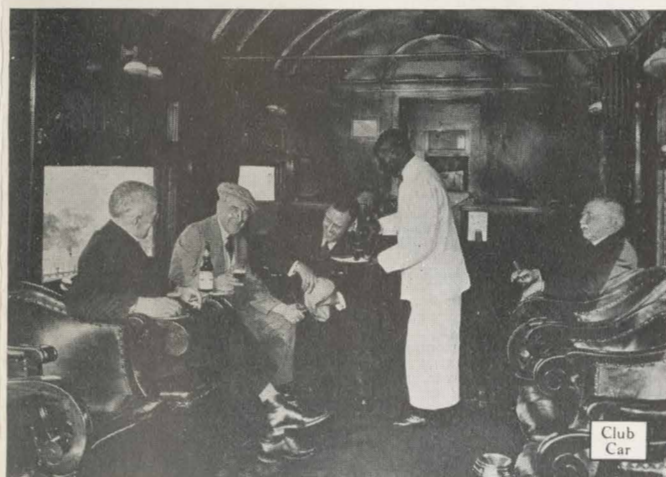
Observation Platform



Lower Berth



Ladies' Maid Service



Club Car

LET THE SOUTHERN PACIFIC AGENT HELP YOU PLAN YOUR TRIP

Accommodations

Over each of its four great scenic routes Southern Pacific runs world-known trains, with famous meal service at prices that are surprisingly moderate. You'll be just as much "at home" aboard these trains as in a fine town club or hotel. You'll enjoy the atmosphere of courteous efficiency—the personnel is enthusiastic with the spirit of service; every man is anxious to add to the pleasure of your trip.

Southern Pacific offers the following travel appointments and refinements:

Sunset Route

"Sunset Limited"—Standard sleepers, observation sleeper, club car, dining car; barber, valet, ladies' maid; shower baths. "Argonaut"—Standard sleepers, observation sleeper, tourist sleeper, dining car, coaches, smoker. "Sunset Mail-Californian"—Standard sleepers, dining car, coaches, smoker.

Note.—Through tourist sleeper is operated from Washington, D. C., to Los Angeles via New Orleans—without change of cars en route.

Shasta Route

"Cascade"—Standard sleepers, observation sleeper, club car, dining car; barber, valet, ladies' maid; shower baths. "West Coast" (runs from Los Angeles via San Joaquin Valley Line to Sacramento, thence over new Cascade Line of Shasta Route to Pacific Northwest)—Standard sleepers, observation sleeper, tourist sleeper, dining car, all-day lunch car, coaches, smoker. "Shasta"—Standard sleepers, observation lounge, dining car, coaches. "Oregonian"—Standard sleepers, tourist sleeper, dining car, coaches, all-day lunch car. "Coach Special"—Coaches, reclining chair cars, all-day lunch car, diner.

Overland Route (Lake Tahoe Line)

"San Francisco Overland Limited"—Standard sleepers, observation sleeper, club car, dining car; barber, valet, ladies' maid; shower baths. "Gold Coast Limited"—Standard sleepers, observation lounge car, dining car; barber, valet, ladies' maid; shower baths. "Pacific Limited"—Standard sleepers, observation sleeper, tourist sleeper, dining car, all-day lunch car, coaches, smoker.

Golden State Route

"Golden State Limited"—Standard sleepers, observation sleeper, club car, dining car; barber, valet, ladies' maid; shower baths. "Apache"—Standard sleepers, observation sleeper, club car, tourist sleeper, dining car, coaches, smoker; barber, valet, ladies' maid; shower baths. "Californian"—Standard sleepers, tourist sleeper, dining car, coaches, smoker.

Steamers

On Southern Pacific steamers, New York to New Orleans, are the following accommodations: Steamship "Dixie"—first-cabin and third-class; de luxe suites consisting of sitting room, twin-bed room, toilet and bathroom; connecting rooms arranged en suite with toilet and bathroom; rooms with toilet and bath; rooms without toilet and bath. Steamships "Momus" and "Creole"—first and second-cabin and third-class; suites consisting of sitting room, double bed room, toilet and bathroom; two-berth state-rooms without toilet and bath.

Liberal Stopover Privileges

Southern Pacific allows the traveler liberal stopover privileges en route. See your nearest Southern Pacific representative for further information.

Southern Pacific Booklets

Ask your nearest Southern Pacific representative for any of the following:

Apache Trail highway	Oregon Outdoors
California for the Tourist	Overland Route
Crater Lake	Shasta Route
Golden State Route	Southern Arizona
Lake Tahoe	Sunset Route
Magic Valley of the Lower Rio Grande	Tioga Pass Tour
New York-New Orleans Steamship Line	Washington-Sunset Route
"100 Golden Hours at Sea"	West Coast of Mexico Route

Southern Pacific Representatives

Your nearest Southern Pacific representative will give you full information as to passenger fares, Pullman reservations, time schedules, etc. He will also attend to such details as tickets, hotel and Pullman reservations, etc., for you, or help you with freight shipment. If there is a Southern Pacific agent in your city, he will gladly call at your office or home and personally help you arrange your trip. Phone or write him.

ATLANTA, GA., 216 Healey Bldg.	D. Asbury, General Agent
ALEXANDRIA, LA., Second and Casson Sts.	Jos. Spear, Division Freight and Passenger Agent
AUSTIN, TEX., 703 Congress Ave.	W. R. Smith, Division Freight and Passenger Agent
BALTIMORE, MD., 209 Morris Bldg.	F. L. Sheeks, Division Freight and Passenger Agent
BEAUMONT, TEX., Sunset Bldg.	S. J. Brown, General Agent
BIRMINGHAM, ALA., 405 Woodward Bldg.	E. S. Leavitt, General Agent
BOSTON, MASS., 204 Washington St., Room 209	G. H. Vogel, General Agent
BUFFALO, N. Y., 254 Elliott Square Bldg.	J. C. Deshotel, General Passenger Agent
CHICAGO, ILL., 33 West Jackson Bldg.	A. C. Hedlund, General Agent, Freight Department
CHICAGO, ILL., 35 West Jackson Bldg.	Robt. McDowell, General Agent
CINCINNATI, OHIO, 205 Dixie Terminal Bldg.	E. G. Cook, General Agent
CLEVELAND, OHIO, 1116 Hippodrome Bldg.	A. E. Weymouth, General Agent
CORPUS CHRISTI, TEX., 400 Peoples St.	J. H. Eves, General Agent
CORSONA, TEX., E. Collins Ave. and N. 10th St.	J. E. Bledsoe, Division Passenger Agent
DALLAS, TEX., 110 Field St.	E. H. Williams, General Agent
DENVER, COLO., 1023 Boston Bldg., 17th and Champa Sts.	W. W. Hale, General Agent
DETROIT, MICH., 203 Majestic Bldg.	H. A. Hansen, Division Freight and Passenger Agent
EL CENTRO, CAL., Market St., bet. 3rd and 4th.	J. E. Monro, Division Passenger Agent
EL PASO, TEX., 213 Texas Ave.	L. L. Graham, Division Freight and Passenger Agent
EUGENE, ORE., 610 Willamette St.	C. S. Elliot, Division Freight and Passenger Agent
FORT WORTH, TEX., 110 East 9th St.	W. T. Plummer, District Passenger Agent
FRESNO, CAL., corner H and Mariposa Sts.	H. C. Franks, Division Freight and Passenger Agent
GALVESTON, TEX., 2024 Market St.	Brizozolesi, Kemsley & Millbourn, General Agents
GENOA (4), ITALY, Via Roma St.	H. E. Pierson, District Passenger Agent
GLENDALE, CAL., 106 North Brand Blvd.	G. Ruhr, General Agent
HAMBURG, GERMANY, 18 Glockengieserwall.	W. J. Carter, Division Freight and Passenger Agent
HARLINGTON, TEX., 209 1/2 Jackson St.	E. J. Peters, Division Passenger Agent
HAVANA, CUBA, Room 307 Manzana de Gomez (Central Park).	Lydon Liston, General Agent
HOUSTON, TEX., Avenida Cinco de Mayo, No. 32	F. W. Sedgwick, General Agent
INDIANAPOLIS, IND., 418 Merchants Bank Bldg.	A. S. Rosenbaum, General Agent for Southern Oregon
KANSAS CITY, MO., 113 Railway Exchange Bldg.	J. J. Miller, District Freight and Passenger Agent
KLAMATH FALLS, ORE., 515 Main St.	J. E. Carter, Assistant General Freight and Passenger Agent
LAKE CHARLES, LA., Majestic Hotel.	A. B. Reynoldson, General Agent for Great Britain
LIVERPOOL, ENGLAND, 21 Water St.	Victor Mylrea, District Agent
LONDON, ENGLAND, 40 Leadenhall Street	A. B. Reynoldson, General Agent for Great Britain
LONG BEACH, CAL., 140 West Ocean Ave.	N. R. P. Borden, Assistant General Agent
LOS ANGELES, CAL., Pacific Electric Bldg.	L. Overman, District Passenger Agent
MEDFORD, ORE., 204 Medford Nat. Bank Bldg.	H. P. Monahan, District Passenger Agent
MEMPHIS, TENN., 116 Exchange Bldg.	A. S. Rosenbaum, General Agent for Southern Oregon
MEXICO CITY, MEX., Avenida Cinco de Mayo, No. 32	C. A. Davis, General Agent
MILAN, ITALY, Via Durini, 34	C. A. Stark, General Agent
MINNEAPOLIS, MINN., 1020 Metropolitan Life Bldg.	Brizozolesi, Kemsley & Millbourn, General Agents
MODISTO, CAL., Passenger Station	R. K. Smith, General Agent
MONTEREY, MEX., Langstroth Bldg.	I. T. Sparks, District Freight and Passenger Agent
NEW BRITAIN, LA., Washington and Railroad Aves.	Alfonso Marquez, District Freight and Passenger Agent
NEW ORLEANS, LA., 606 Whitney Ct. Bank (Poydras Br.) Bldg.	L. A. Vezay, Traveling Agent
NEW YORK, N. Y., 531 Fifth Ave. (at 44th St.), Room 1012	A. C. Ziegler, Division Passenger Agent
NEW YORK, N. Y., 531 Fifth Ave. (at 44th St.)—Southern Pacific Uptown Ticket Office	Bailey M. Clark, General Agent, Southern Pacific Steamship Lines
NEW YORK, N. Y., 105 Broadway (20th Floor)	John N. Field, District Passenger Agent
NEW YORK, N. Y., 105 Broadway	W. J. Hanrahan, City Passenger and Ticket Agent
OAKLAND, CAL., 13th and Broadway	H. H. Gray, General Agent, Passenger Department
ORDEN, UTAH, 32 David H. Hill Bldg.	S. C. Chiles, General Agent, Freight Department
OKLAHOMA CITY, OKLA., 924 Perrine Bldg., 1st and Robinson Sts.	L. F. Hudson, District Passenger Agent
PARIS, FRANCE, 3 Rue Tronchet	G. Ruthrauff, District Passenger Agent
PASADENA, CAL., 148 East Colorado St.	J. A. Eads, General Agent
PHILADELPHIA, PA., 706 Packard Bldg.	H. Desmidt, General Agent
PHOENIX, ARIZ., 101 North Central Ave.	G. W. Wetherby, District Passenger Agent
PITTSBURGH, PA., 205 Park Bldg.	F. I. Brooks, General Agent
PORTLAND, ORE., 4th Street at Stark	H. F. Starke, General Agent
RENO, NEV., Commercial Row and Lake St.	J. A. Hogood, City Ticket Agent
RIVERSIDE, CAL., 750 Market St.	J. H. McClure, District Freight and Passenger Agent
SACRAMENTO, CAL., Passenger Station	J. R. Downs, District Freight and Passenger Agent
SALEM, ORE., 184 North Liberty St.	Brizozolesi, Kemsley & Millbourn, General Agents
SALT LAKE CITY, UTAH, 41 South Main St.	D. R. Owen, District Passenger Agent
SAN ANTONIO, TEX., 511 Navarro St.	A. A. Mickel, District Freight and Passenger Agent
SAN DIEGO, CAL., 577 Spreckels Bldg.	Press Bancroft, General Agent
SAN FRANCISCO, CAL., 742 Market St.	Tom Hood, Assistant General Passenger Agent
SAN JOSE, CAL., 2nd and San Fernando Sts.	A. D. Hagaman, District Freight and Passenger Agent
SANTA ANA, CAL., 223 West 4th St.	C. J. Sundberg, District Passenger Agent
SANTA BARBARA, CAL., 637 State St.	Geo. B. Hanson, District Passenger Agent
SANTA MONICA, CAL., 410 Santa Monica Blvd.	L. B. Valla, District Freight and Passenger Agent
SANTA ROSA, CAL., 210 Rosenberg Bldg.	G. C. Deane, District Passenger Agent
SEATTLE, WASH., 1203 Fourth Ave.	A. J. Rehbold, District Passenger Agent
SHERBROOK, LA., 203 Market St.	R. B. Houston, District Freight and Passenger Agent
ST. LOUIS, MO., 401 Carleton Bldg., 6th and Olive Sts.	C. M. Biggs, General Agent
STOCKTON, CAL., Main and San Joaquin Sts.	M. J. Dooley, Division Freight and Passenger Agent
TUCSON, ARIZ., Score Bldg., 223 E. Congress St.	L. B. Burns, General Agent
TURIN, ITALY, Via La Grange, 23	S. C. Beane, District Freight and Passenger Agent
VANCOUVER, B. C., 585 Granville St.	E. J. Fenchurch, General Freight and Passenger Agent
WASHINGTON, D. C., 112 No. Sixth St.	Brizozolesi, Kemsley & Millbourn, General Agents
WASHINGTON, D. C., 400 Southern Bldg.	W. C. Hendry, Canadian General Agent
WASHINGTON, D. C., 1510 H St. (N. W.)	A. J. Poston, General Agent

E. W. CLAPP, Traffic Manager, Chicago, Ill.

WM. SIMMONS, Traffic Manager, Southern Pacific Steamship Lines, New York, N. Y.
 C. S. FAY, Traffic Manager, Texas and Louisiana Lines, Houston, Tex.
 J. T. MONROE, Assistant Traffic Manager, Texas and Louisiana Lines, Houston, Tex.
 W. C. MCCORMICK, General Passenger Agent, New Orleans, La.
 J. F. SULLIVAN, General Passenger Agent, Houston, Tex.
 J. D. MASON, General Passenger Agent, El Paso, Tex.
 E. J. FENCHURCH, General Freight and Passenger Agent, Tucson and Phoenix, Ariz.
 H. LAWTON, Traffic Manager, Mexican Lines, Guadalajara, Mex.
 C. L. MCFAUL, Assistant Passenger Traffic Manager, Los Angeles, Cal.
 J. A. ORMOND, Assistant Passenger Traffic Manager, Portland, Ore.

F. S. MCGINNIS, Passenger Traffic Manager, San Francisco, Cal.

How best to see the **Pacific Coast**



Southern Pacific

How best to see the **Pacific Coast**



Southern Pacific