



Chicago and

San Francisco



Overland Route starts
westward from Chicago

OVERLAND ROUTE

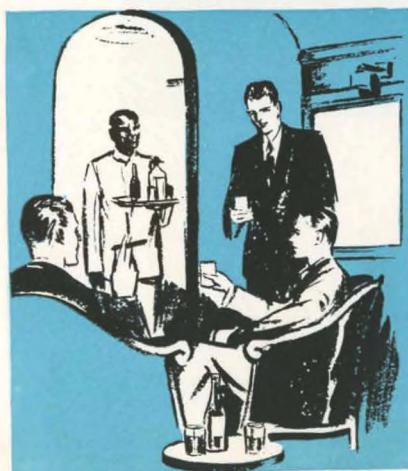
Chicago, Omaha, Ogden, San Francisco

SOUTHERN PACIFIC's new San Francisco Overland Limited is the "Transcontinental Travel Aristocrat." There is none finer nor faster between Chicago and California.

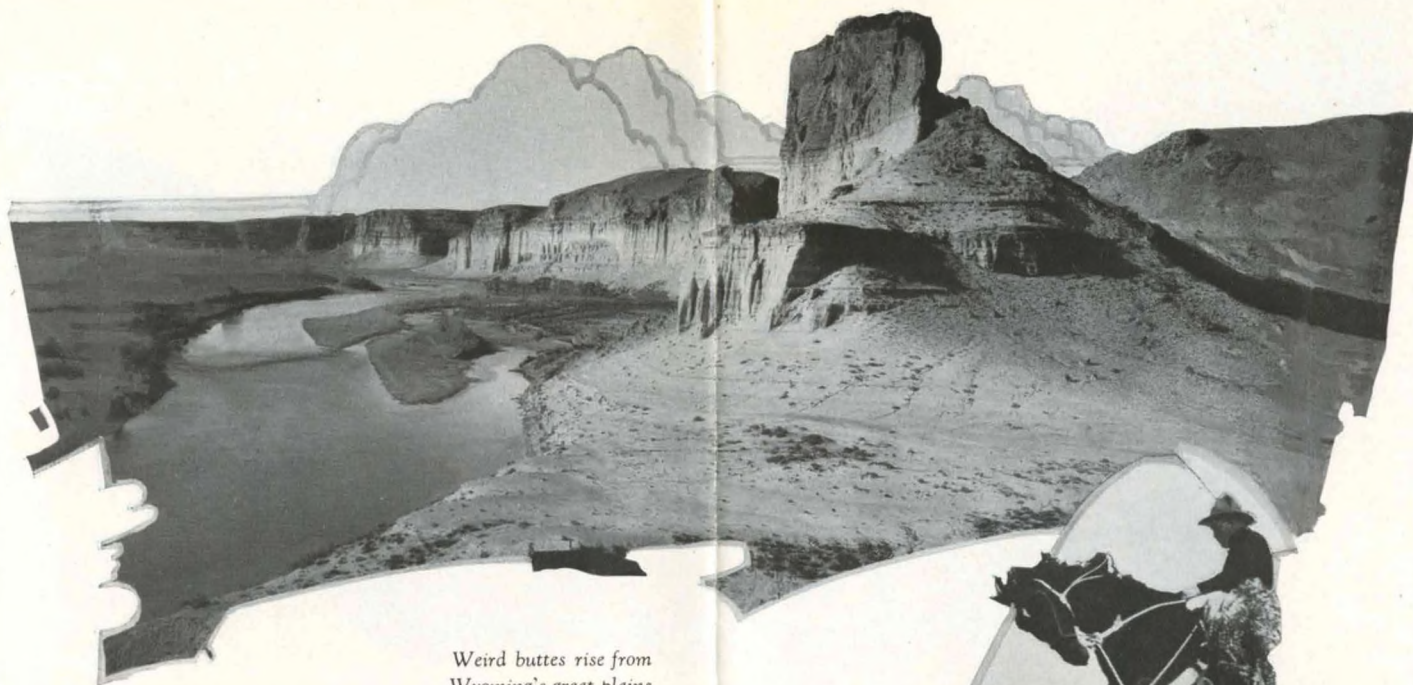
It travels, on a 63-hour schedule, the Overland Route (Lake Tahoe Line)—straight across the country, the shortest and most direct route between Chicago and San Francisco—the historic trail made by the covered wagons in the adventurous '40s, the route of the Pony Express, the line of the first transcontinental railroad, today the course followed by the finest of modern trains.

Southern Pacific's Overland Limited is the premier train of the Overland Route. Its refinements in equipment and service have made it the choice of people to whom luxury, comfort and hospitality are first considerations. Long has it been recognized as a world-famous train. Long has it enjoyed the preference of experienced and discriminating travelers.

Where Michigan
Boulevard crosses
the Chicago
River



OVERLAND LIMITED



*Weird buttes rise from
Wyoming's great plains*

LEAVING time of the "Overland." The gay, bustling crowd, the going-away gifts, the excitement, the shouted "good-byes" and last-minute admonitions. A scene of life and color. A gentle, almost imperceptible movement of the train—and you are starting on your swift trip across the continent.

The passengers include leaders in social and business activity, diplomats, distinguished travelers from all over the world—people who always select the finest.

You note during the first few hours of your trip that every travel convenience has been provided on the Overland Limited. Equipment and service like those of a fine town club or hotel—Pullmans of latest design with permanent partitions to give privacy in sections; beautifully-appointed drawing rooms and compartments; observation car with deep lounge chairs, a library of well-chosen periodicals and writing desk, and roomy outdoor platform.

A retiring room, with shower, for women, with ladies' maid in attendance for manicuring, shampooing and hair-dressing, and to help with the children. Club car for men,

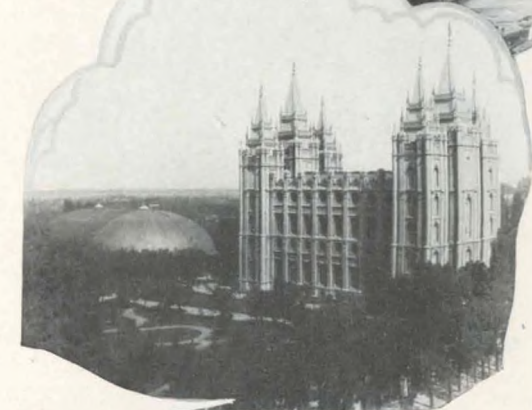


*You may "rough it" de luxe on
a Western "dude ranch"*





Around mountains,
through canyons, along
rivers the "Overland"
goes



Mormon Temple
(right) and
Tabernacle, Salt
Lake City



a delightful place to rest, and to read market reports and the newspapers from the nearest large city en route. Here a porter serves cold drinks and fruit juices. And here, too, is a shower bath, also the services of barber and valet.

Overland Limited dining car service is a feature of your trip. The steward is your host, the chef an artist, the waiters attentive and expert in service. Dining appointments luxurious and attractive—gleaming new silver service, sparkling glasses, spotless linen. Menus varied. Fresh fruits and vegetables and choice cuts of meats at prices surprisingly reasonable when compared with similar service in first class hotels and restaurants.

Throughout the Overland Limited you find an atmosphere of courteous efficiency. The personnel, especially selected for this train, is enthusiastic with the spirit of service—every man anxious to add to the pleasure of your trip.

Traveling over Overland Route are also two other fine Southern Pacific trains—the Gold Coast Limited, a train high standard in every detail of equipment and service, and the popular Pacific Limited, carrying tourist cars as well as Pullmans and having an observation car also.



OVERLAND LIMITED





"Going to Sea by Rail"—
Southern Pacific's Great Salt
Lake cut-off

Most Direct Route Across Center of Continent

LEAVING Chicago westbound: The Mississippi river. Iowa. Council Bluffs. The Missouri river. Omaha. Nebraska. Wyoming. Utah.

Ogden. If you wish, a short free sidetrip to Salt Lake City—capital of Utah, popular resort city, important mining center and distributing center for the inter-mountain territory. Here are the Mormon Temple, which took forty years to build, and the great Tabernacle, constructed entirely without the use of metal nails.

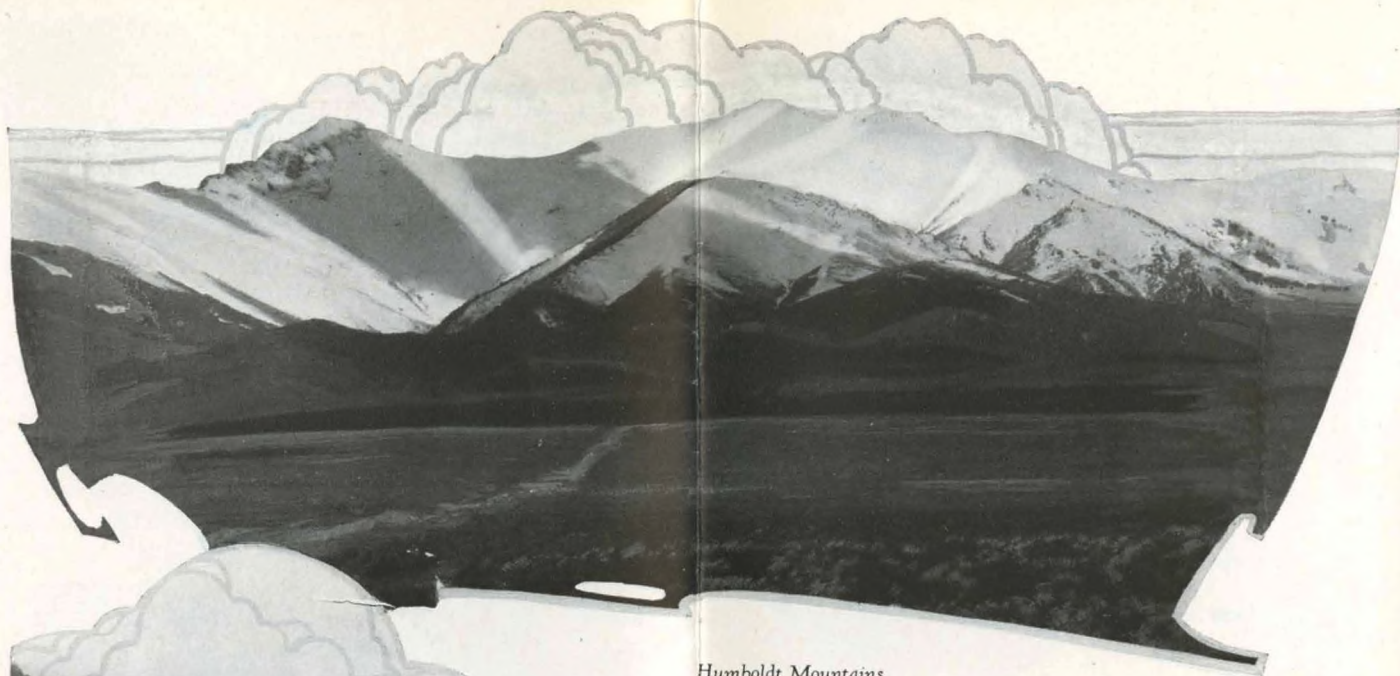
Just west of Ogden you actually "go to sea by rail" over Southern Pacific's Great Salt Lake "cut-off", built straight across the lake to eliminate the grades and curves of the old line around the lake's northern side. This "cut-off" shortened the route 43.8 miles.

Great Salt Lake itself is saltier than any other body of water except the Dead Sea in Palestine. You may swim or float in it—but never sink. On Antelope Island,

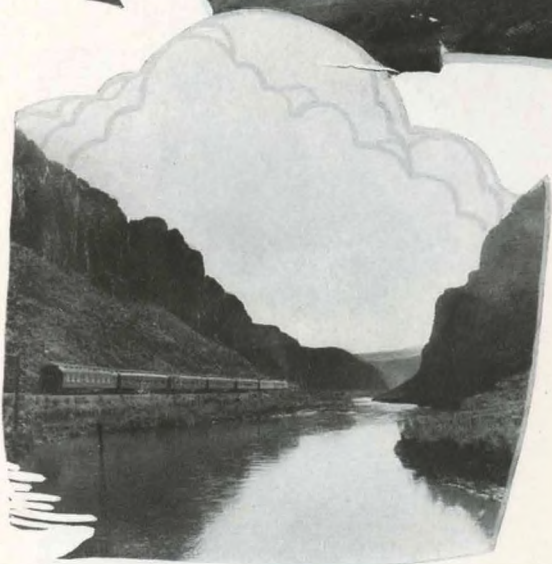


Bird Island,
Great Salt Lake
—haven for
seagulls





*Humboldt Mountains,
Nevada*



*Through Palisade
Canyon, Nevada*



seen from the train, is one of the few remaining large herds of buffalo.

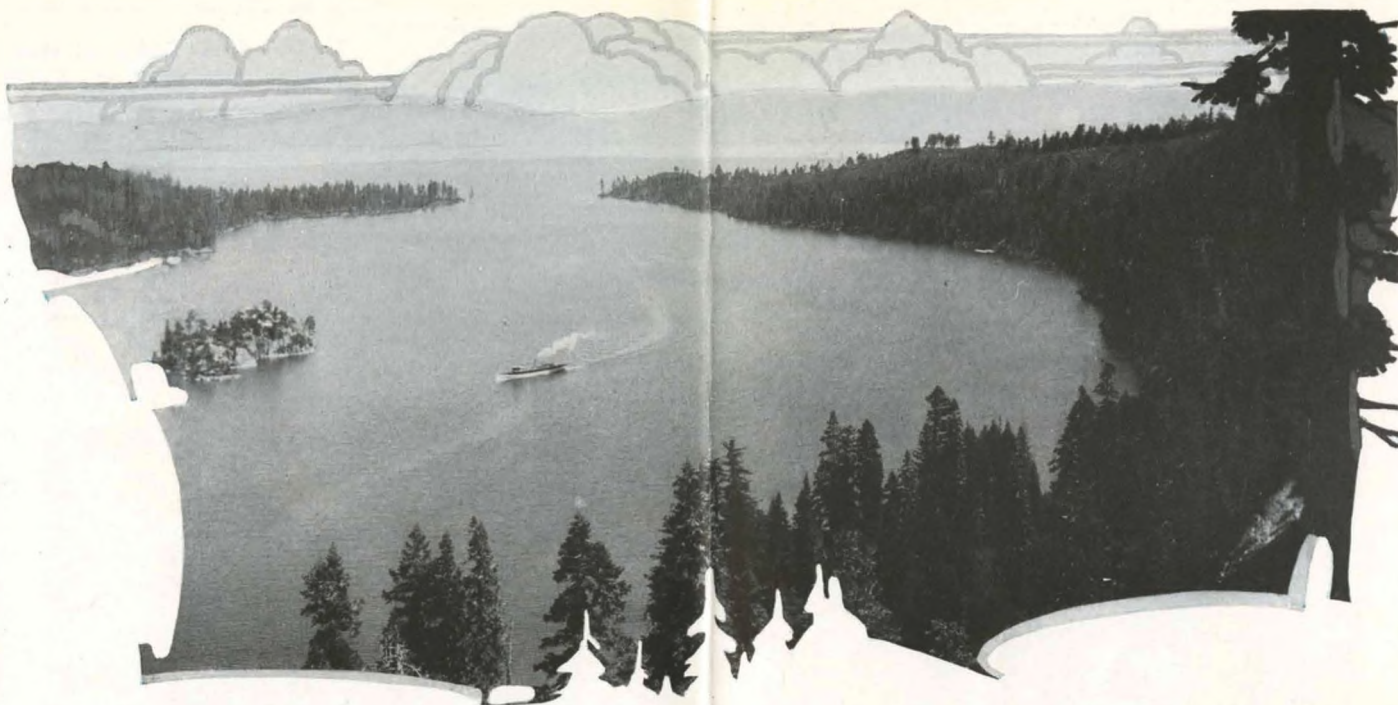
Nevada. Gold, silver and copper mines. Desert acres reclaimed through irrigation. "Dude ranches", offering opportunity to "rough it de luxe."

Reno. Site of the State University, noted for its School of Mines. From Reno is a sidetrip along weird Pyramid Lake to Lassen Volcanic National Park. Lassen Peak is the only active volcano in continental United States. The Park contains great forests, streams, waterfalls, lakes and hundreds of boiling springs and geysers.

Up the eastern slope of the Sierra Nevada range. Boca, a favorite spot for fishermen. Truckee—famous, like Lake Tahoe, for its winter sports carnival. Here are taken many of the "Far North" scenes you see in motion pictures. Truckee is also the junction point for Lake Tahoe, which you reach by a 12-mile sidetrip along the banks of the sparkling Truckee River over Southern Pacific's new broad-gauge line direct to the lake's shore.



OVERLAND LIMITED



*Emerald Bay and Ellen's Isle,
Lake Tahoe, atop the High
Sierra*

Lake Tahoe! A lake 6000 feet above sea level on the summit of the snow-capped Sierra range. A lake so blue you're tempted to dip your pen in it and to try to spread its color on your writing paper! A liquid mountain mirror! A breath-taking marvel!

Here, in summer, are golf, tennis, dancing, riding, bathing, aquaplaning, boating, fishing, hunting, hiking, mountain-climbing, a steamer ride around the lake and other favorite sports. In winter, a colorful and picturesque winter sports carnival is staged.

Tahoe is connected with that other jewel of the Sierra range, Yosemite Valley, by a picturesque and amazing highway—the historic Tioga Road, over which touring cars run daily during the summer season. From Yosemite you may rejoin Southern Pacific's line at Merced or Fresno to go on to either San Francisco or Los Angeles.

On the Overland Route main line again. Just west of Truckee, the rugged crests of the Sierra Nevada mountains. Donner Lake, scene of an historic tragedy in the days of the Overland Trail, but now another mountain



*Motorboating—
one of Tahoe's
many sports*



See the Whole Pacific Coast, Using S

BESIDES Overland Route, Southern Pacific offers you three other routes—each rich in scenic, romantic and historic interest—to the West:

Sunset Route, New York to San Diego, Los Angeles and San Francisco via New Orleans and El Paso; Golden State Route, Chicago to Los Angeles via El Paso; Shasta Route, between Pacific Northwest and San Francisco via Portland.

A wide choice of routes, offered you by no other railroad. Make the most of Southern Pacific service—go west one way, return another.

And while you're on the Coast, see all you can of its scenic wonders. Here's a suggestion: West on "Over-

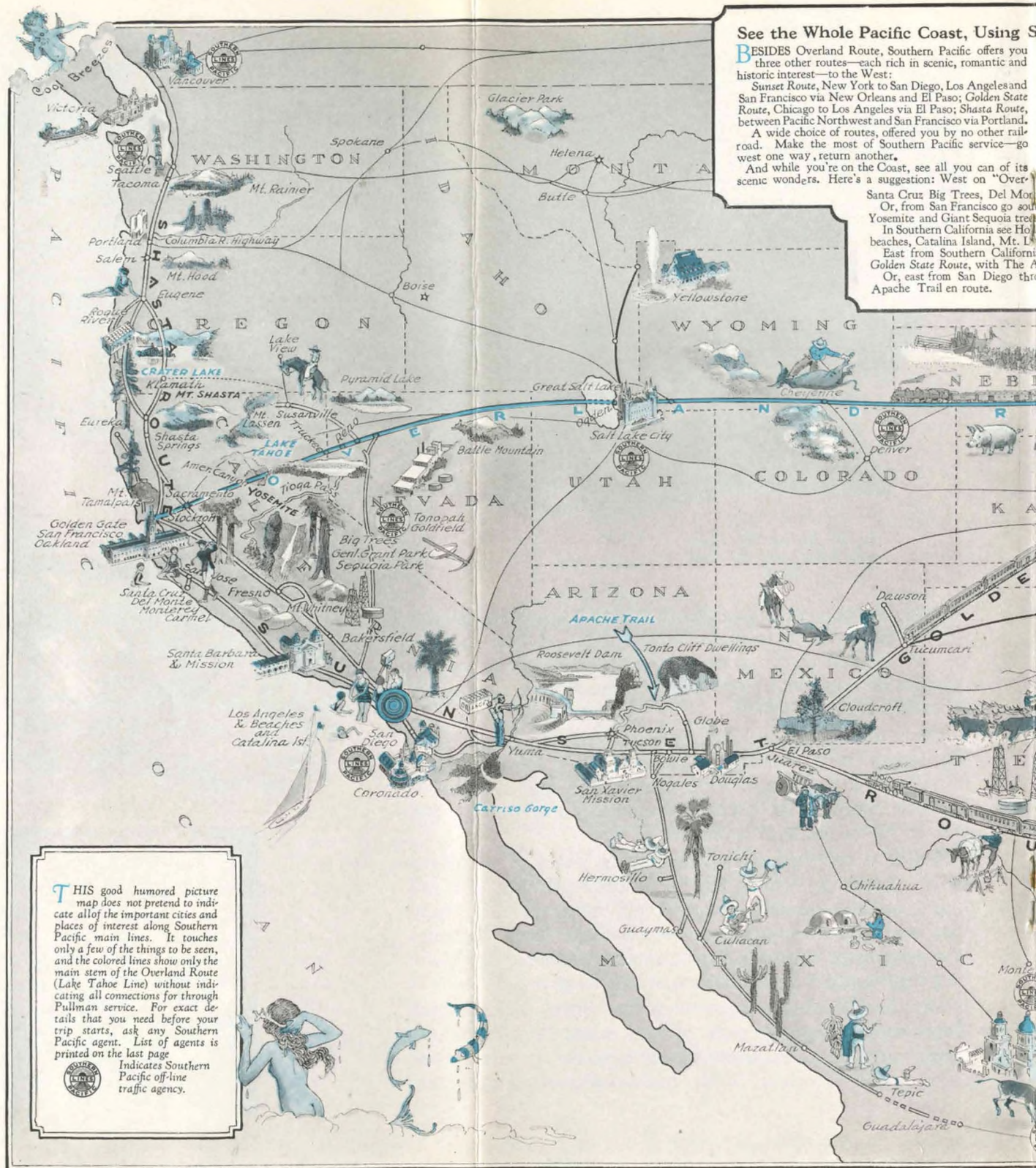
Santa Cruz Big Trees, Del Mar.

Or, from San Francisco go south to Yosemite and Giant Sequoia trees.

In Southern California see Hollywood, Catalina Island, Mt. L.

East from Southern California Golden State Route, with The A.

Or, east from San Diego through Apache Trail en route.



THIS good humored picture map does not pretend to indicate all of the important cities and places of interest along Southern Pacific main lines. It touches only a few of the things to be seen, and the colored lines show only the main stem of the Overland Route (Lake Tahoe Line) without indicating all connections for through Pullman service. For exact details that you need before your trip starts, ask any Southern Pacific agent. List of agents is printed on the last page.



Indicates Southern Pacific off-line traffic agency.

land." From San Francisco, side trips to many places of interest in Central and Northern California.

North from San Francisco over *Shasta Route*, going via Klamath over new Cascade Line, a thrilling trip through virgin wilderness. En route—mountains, rivers, lakes, waterfalls, Mt. Shasta, Crater Lake.

If you wish, go east from Pacific Northwest. Or, better, return to San Francisco over Siskiyou Line, a different phase of *Shasta Route*, through beautiful Western Oregon country and—

On to Southern California over scenic Coast Line.
Over 100 miles of the way right along the Pacific shore.

te and Santa Barbara en route.
 ch via San Joaquin Valley Line,
 en route.

ywood, Los Angeles and its fine
we, Orange Empire.

a over either Sunset Route or Apache Trail enroute.

ough Carriso Gorge, with The





Snowy mountains tower above
sunny Lake Tahoe



Tahoe Lake
Region—also a
famous winter-
time play-
ground



playground. American, where a 5-minute stop enables you to revel in the beauty of the American River Canyon. Great mountain sides carpeted with greenery.

Then in the foothills come the gold fields of '49—still bare and scarred in spots from the early mining operations. This is the land whose charm inspired to prose and verse Rudyard Kipling, John Muir, Robert Louis Stevenson, Bret Harte, Mark Twain, Jack London, Edwin Markham and Gertrude Atherton.

The spectacular descent into the Sacramento River Valley, which with the San Joaquin Valley to the south forms California's *Great Central Valley*—extending from Mt. Shasta on the north to the Tehachapi Mountains on the south, and from the Sierra Nevada range on the east to the Coast Range on the west.

You cross the middle of this Great Central Valley on the Overland Limited. Here are millions of acres of the most productive land in the world—millions of acres of oranges, lemons, olives, palms, figs, prunes, raisins, peaches, pears,



OVERLAND LIMITED



*Overland trains run high
above Donner Lake's
forested shores*

apples, grapes, almonds, walnuts, apricots, melons and numerous other products of the soil.

Sacramento. Capital of California, its largest inland city, fruit shipping center and city of fine homes. Capital Park contains rare and beautiful trees and shrubs from all parts of the world.

Benicia, capital of California in 1853-54, where your train is ferried across Carquinez Straits to Port Costa. Then 27 miles along the shore of San Francisco Bay to Berkeley, lovely seat of the University of California, the largest university in attendance in the United States.

Oakland, a great and beautiful city and one of the industrial centers of the west. Mile upon mile of navigable shore line give Oakland double transportation, rail and water. Here you board a Southern Pacific ferry to cross San Francisco Bay, one of the world's greatest harbors, to San Francisco, gleaming upon the hills beside the Golden Gate. No finer introduction, anywhere, to a city.



*Truckee River
Canyon—land of
heart's desire for
the fisherman*





A thrilling sight from the car windows
—American River Canyon



Capital Park,
Sacramento



San Francisco Center of a Vast Playground

SAN FRANCISCO! Gay and cosmopolitan. One of the world's most fascinating and distinguished cities. A city of superb climate—average summer temperature 59 degrees (San Francisco is the coolest summer city in the country), average winter temperature 51 degrees.

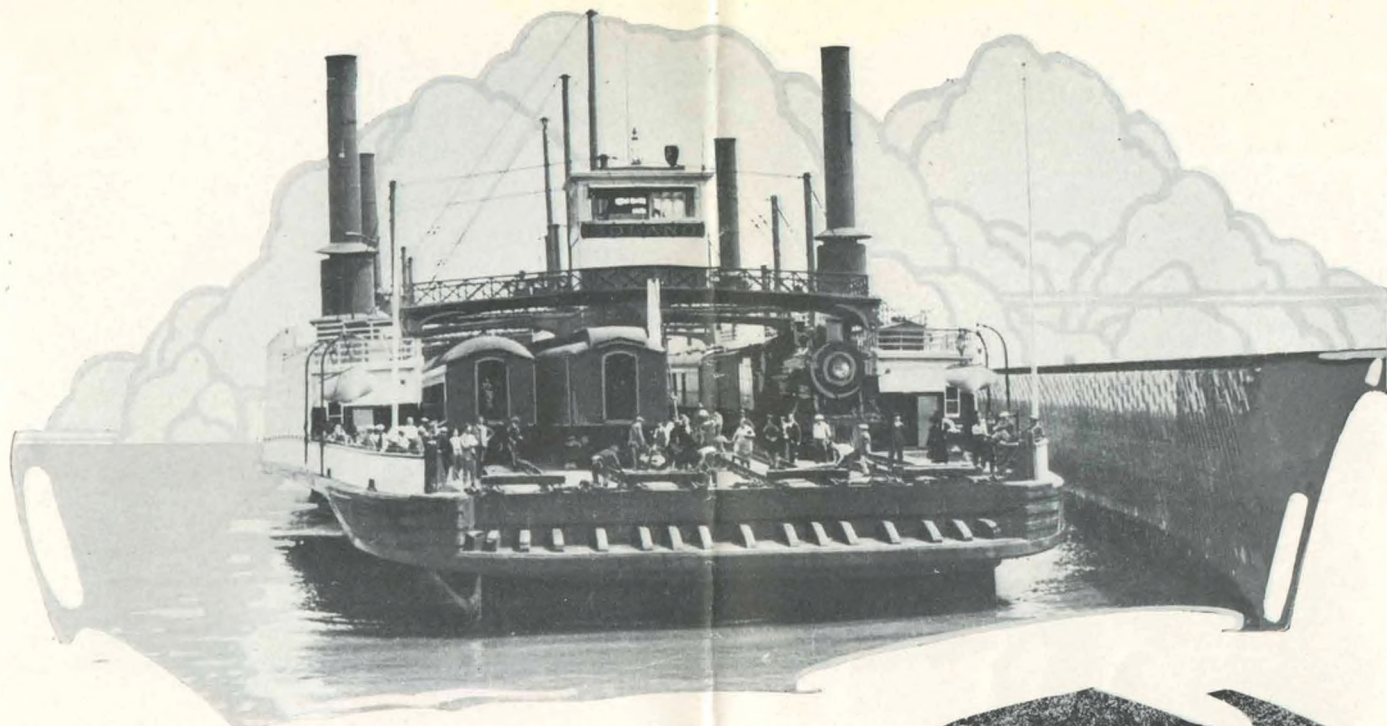
In San Francisco charming playgrounds and scores of points of scenic and historic interest await you. Its French and Italian restaurants, fine theaters, distinctive shops, scenic golf courses, and its foreign colonies, including quaint Chinatown, an Oriental city within an Occidental metropolis—all make San Francisco a place of fascinating interest.

San Francisco is also the starting point for famous playgrounds throughout Central and Northern California—from Mt. Shasta, towering 14,380 feet toward the sky, on the north, to the famous Monterey Peninsula, with its picturesquely beautiful settlements of Carmel-by-the-Sea,



OVERLAND LIMITED



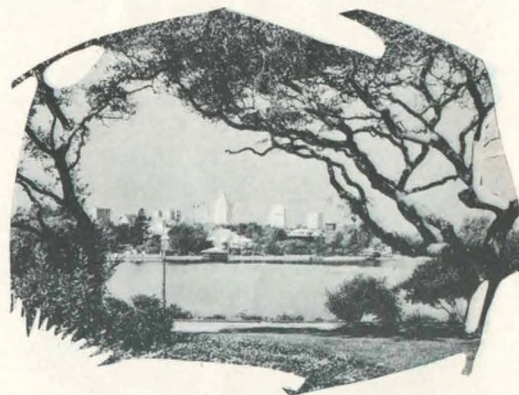


*Your train ferried across Carquinez Straits—
novelty of your Overland
Route journey*

Del Monte, Pebble Beach, Pacific Grove, etc., on the coast to the south, and, inland, Yosemite National Park.

Frequent train service to points throughout this whole region is maintained by Southern Pacific, which operates more than 4000 miles of railroad in California.

Be sure to see the redwoods—those giant trees that soar 300 to 350 feet into the air. Some of the largest, 25 feet thick and over 400 feet tall, are estimated to be more than 3000 years old—the oldest living things on this planet. You'll find redwoods at Muir Woods, near San Francisco; in the Redwood Empire, along the coast north from San Francisco; in the Santa Cruz mountains, on the way from San Francisco to Santa Cruz; in the Calaveras groves and in Yosemite, Sequoia and General Grant National Parks, all tributary to the Great Central Valley.

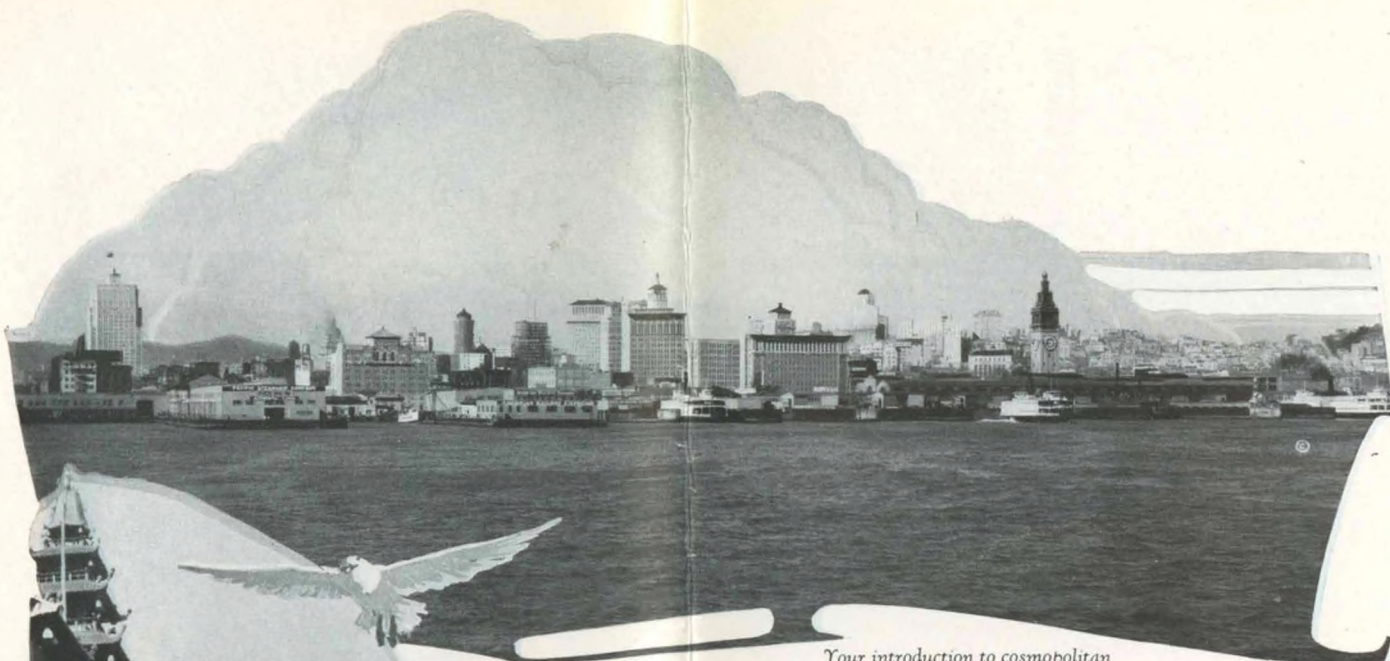


*Looking across
Lake Merritt
toward
Oakland's
business district*



TRAVEL ARISTOCRAT





*Your introduction to cosmopolitan
San Francisco!*

Along California's Scenic Coast

BETWEEN San Francisco and Los Angeles is Southern Pacific's scenic Coast Line trip. No rail trip anywhere offers a greater variety of romantic, scenic and historic interest. The rails follow "El Camino Real" (the King's Highway), over which the padres trod in traveling up and down the coast in the days of the early Missions. More than 100 miles of the way your train runs right along the shore of the blue Pacific.

Charming cities and towns, orchards and farms, hills and broad level stretches, magnificent panoramas of mountain and seashore, smooth white beaches and rugged rock-bound bits of coast—all unfold before you from your seat on the observation platform.

You can make this trip along California's scenic coast in twelve daylight hours on Southern Pacific's "Daylight Limited."

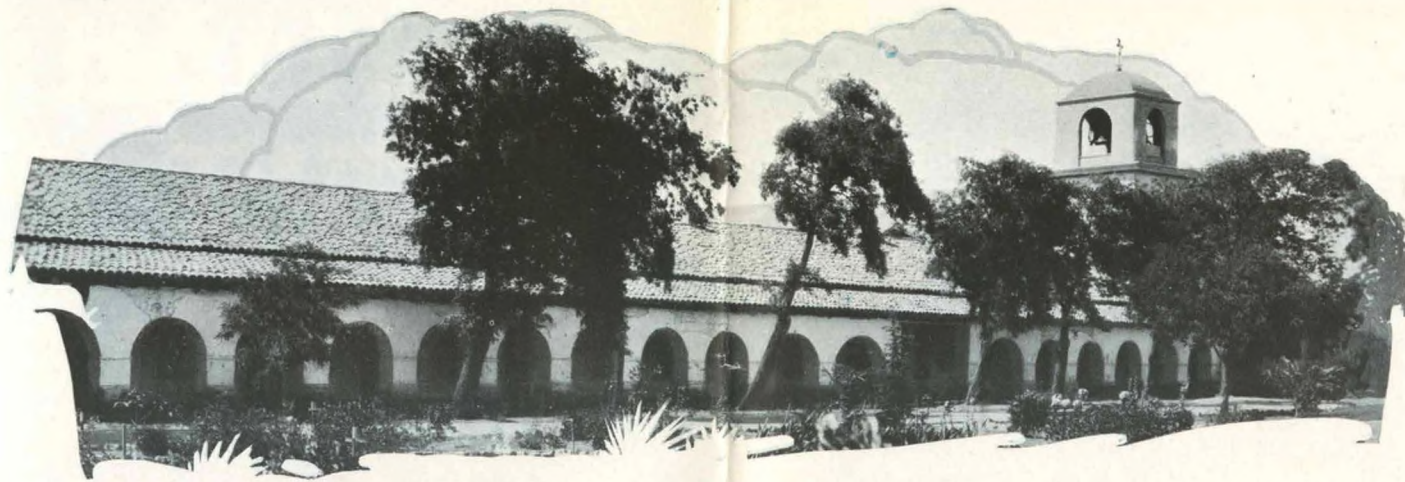
If Los Angeles is your destination, arrange if you can to go by way of San Francisco—so you can see that distinctive and appealing city and the many attractions in the beautiful country surrounding it, and so you can journey to Southern California over the scenic Coast Line.



*Chinatown,
San Francisco—
Oriental jewel in
Occidental
setting*



OVERLAND LIMITED



Mission San Juan Bautista, one of the venerable relics left by the padres along "El Camino Real" between San Francisco and Los Angeles.

Southern Pacific Representatives

Your nearest Southern Pacific agent will give you full information as to passenger fares, Pullman reservations, time schedules, etc. If you wish, he will gladly call at your office or home and help you arrange your trip, or help you with freight shipment. He will also attend to such details as tickets, Pullman and hotel reservations, etc., for you. Phone or write him.

ATLANTA, GA., 319-320 Healey Bldg. D. Asbury, General Agent
ALEXANDRIA, LA., Second and Casson Sts. Jos. Spear, Div. Freight and Passenger Agent
AUSTIN, TEX., 703 Congress Ave. W. R. Smith, Div. Freight and Passenger Agent
BALTIMORE, MD., 206-7-8 Union Trust Bldg. W. B. Johnson, General Agent
BEAUMONT, TEX., Sunset Park. F. L. Sheeks, Div. Freight and Passenger Agent
BIRMINGHAM, ALA., 408 Woodward Bldg. S. J. Brown, General Agent
BOSTON, MASS., 294 Washington St. E. S. Leavitt, General Agent
BUFFALO, N. Y., 204 Ellicott Square Bldg. G. H. Vogel, General Agent
CHICAGO, ILL., Sou. Pac. Bldg., 33 West Jackson Blvd. A. C. Hedlund, Gen. Agent, Pass. Dept.
CHICAGO, ILL., Sou. Pac. Bldg., 35 West Jackson Blvd. J. J. Grogan, Gen. Agent, Freight Dept.
CINCINNATI, OHIO, 206 Dixie Terminal Bldg. Robt. McDowell, General Agent
CLEVELAND, OHIO, 1116 Hippodrome Bldg. E. G. Cook, General Agent
CORSCANA, TEXAS, E. Collins Ave. and N. 10th St. J. H. Evetts, Commercial Agent
DALLAS, TEXAS, 116 Field St. J. E. Bledsoe, Division Passenger Agent
DENVER, COLO., 303-304 Boston Bldg., 17th and Champa Sts. E. H. Williams, General Agent
DETROIT, MICH., 203-205 Majestic Bldg. W. W. Hale, General Agent
EL CENTRO, CAL., Market St. bet. 3rd and 4th. V. E. Frizzell, Dist. Freight and Passenger Agent
EL PASO, TEX., 114 Mills St. Richard Warren, Dist. Freight and Passenger Agent—Pacific Lines
EL PASO, TEX., 206 North Oregon St. J. E. Monroe, Div. Freight and Passenger Agent—Texas Lines
EUGENE, ORE., 616 Willamette St. L. L. Graham, Dist. Freight and Passenger Agent
FORT WORTH, TEX., 116 East 9th St. C. S. Elliot, Div. Freight and Passenger Agent
FRESNO, CAL., corner H and Mariposa Sts. C. J. Sundberg, District Passenger Agent
FRESNO, CAL., corner H and Mariposa Sts. H. E. Ish, District Freight Agent
GALVESTON, TEX., 2024 Market St. H. C. Franks, Div. Freight and Passenger Agent
GENOA (4), ITALY, Via Roma 8a. Brizzolesi, Kemsley & Millbourn, General Agents
GLENDALE, CAL., 106 North Brand Blvd. H. E. Pierson, District Passenger Agent
HAMBURG, GERMANY, 18 Glockengiesserwall. G. Ruhr, General Agent
HAVANA, CUBA, Room 307 Manzana de Gomez (Central Park). R. Menendez, General Agent
HOUSTON, TEX., Rice Hotel Annex. E. J. Peters, Division Passenger Agent
INDIANAPOLIS, IND., Merchants Bank Bldg. Lyon Liston, General Agent
KANSAS CITY, MO., Railway Exchange Bldg. F. W. Sedgwick, General Agent
KLAMATH FALLS, ORE., 110 Eighth St. J. J. Miller, Dist. Freight and Passenger Agent
LAKE CHARLES, LA., Majestic Hotel. J. E. Carter, Asst. General Freight and Passenger Agent
LIVERPOOL, ENGLAND, 21 Water Street. R. G. Bonsor, General Agent for Great Britain
LONDON, ENGLAND, 49 Leadenhall Street. R. G. Bonsor, General Agent for Great Britain
LONG BEACH, CAL., 156 West Ocean Ave. L. Overman, District Passenger Agent
LOS ANGELES, CAL., Pacific Electric Bldg. H. P. Monahan, District Passenger Agent
LOS ANGELES, CAL., Pacific Electric Bldg. J. E. Light, District Freight Agent
MEDFORD, ORE., 204 Medford Nat. Bank Bldg. A. S. Rosenbaum, Dist. Freight and Pass. Agent
MEMPHIS, TENN., Exchange Bldg. L. C. Bouchard, General Agent
MERCED, CAL., corner 17th and N Sts. I. T. Sparks, Dist. Freight and Passenger Agent
MEXICO CITY, MEX. Avenida Cinco de Mayo, No. 32. F. V. Stark, General Agent
MILAN, ITALY, Via Durini, 34. Brizzolesi, Kemsley & Millbourn, General Agents
MINNEAPOLIS, MINN., 1020 Metropolitan Life Bldg. J. H. Desherow, General Agent

MONTERREY, MEX., Langstroth Bldg., Escobedo and Padre Mier Streets. Alfonso Marquez, General Agent
NEW ORLEANS, LA., 706 Whitney Central Bank Bldg. A. C. Ziegler, Division Passenger Agent
NEW YORK, N. Y., 165 Broadway. A. J. Poston, Gen. Agent, Passenger Department
NEW YORK, N. Y., 165 Broadway. S. C. Chiles, General Agent, Freight Department
OAKLAND, CAL., 13th and Broadway. L. F. Hudson, District Passenger Agent
OAKLAND, CAL., 13th and Broadway. I. L. Kelly, District Freight Agent
OCEAN PARK, CAL., Pier Avenue and Trolley Way. A. J. Rehwood, District Passenger Agent
OGDEN, UTAH, 525 David Eccles Bldg. F. G. Ruhrauff, Dist. Freight and Passenger Agent
OKLAHOMA CITY, OKLA., 909 Colcord Bldg. J. A. Eads, General Agent
PARIS, FRANCE, 3 Rue Tronchet. H. Desmidt, General Agent
PASADENA, CAL., 148 East Colorado St. G. W. Wetherby, District Passenger Agent
PHILADELPHIA, PA., 706-7 Packard Bldg. F. T. Brooks, General Agent
PHOENIX, ARIZ., 107 North Central Ave. R. P. Kyle, Dist. Freight and Passenger Agent
PITTSBURGH, PA., 1312 Park Bldg. H. F. Starke, General Agent
PORTLAND, ORE., 4th Street at Stark. J. A. Hopgood, City Ticket Agent
RENO, NEV., Commercial Row and Lake St. J. H. McClure, Dist. Freight and Passenger Agent
RIVERSIDE, CAL., 750 Market St. J. R. Downs, Dist. Freight and Passenger Agent
ROME, ITALY, Piazza de Spagna, 28. B. izzolesi, Kemsley & Millbourn, General Agents
SACRAMENTO, CAL., Passenger Station. D. R. Owen, District Passenger Agent
SACRAMENTO, CAL., Passenger Station. C. E. Spear, District Freight Agent
SALEM, ORE., 184 North Liberty St. A. A. Mielke, Dist. Freight and Passenger Agent
SALT LAKE CITY, UTAH, 41 South Main St. Tom Hood, Assistant General Passenger Agent
SAN ANTONIO, TEX., 613 Navarro St. A. D. Hagan, Dist. Freight and Passenger Agent
SAN DIEGO, CAL., 677 Spreckels Bldg. J. N. Harrison, District Passenger Agent
SAN FRANCISCO, CAL., 65 Geary St. B. D. Myers, District Freight Agent
SAN FRANCISCO, CAL., 77 Market St. Geo. B. Hanson, District Passenger Agent
SAN JOSE, CAL., First and San Fernando Sts. E. Shillingsburg, District Freight Agent
SAN JOSE, CAL., First and San Fernando Sts. L. B. Valla, Dist. Freight and Passenger Agent
SANTA ANA, CAL., 223 West Fourth St. G. C. Drake, District Passenger Agent
SANTA BARBARA, CAL., 937 State St. H. A. Hansen, District Freight Agent
SANTA ROSA, CAL., 210 Rosenberg Bldg. R. B. Houston, Dist. Freight and Passenger Agent
SEATTLE, WASH., 314 Union St. B. C. Taylor, General Agent
SHREVEPORT, LA., 520 Market St. M. J. Dooley, Div. Freight and Passenger Agent
ST. LOUIS, MO., Sou. Pac. Bldg., 312-314 No. 6th St. L. B. Banks, General Agent
STOCKTON, CAL., Main and San Joaquin Sts. S. C. Beane, Dist. Freight and Passenger Agent
TURIN, ITALY, Via La Grange, 23. Brizzolesi, Kemsley & Millbourn, General Agents
VANCOUVER, B. C., 585 Granville St. E. J. Hendry, Canadian General Agent
WACO, TEX., 112 No. Sixth St. Wade Cunningham, Div. Freight and Passenger Agent
WASHINGTON, D. C., 1510 H St. (N. W.). G. V. McArt, Agent, Washington Sunset Route
INDUSTRIAL AGENTS—A. K. Frye, 65 Market St., San Francisco, Cal.; C. M. Biggs, Portland, Ore.; C. R. Smurr, Pae. Elec. Bldg., Los Angeles, Cal.; P. L. Bell, Ind. and Col. Agt., Guaymas, Sonora, Mex.; J. I. McGregor, H. M. Madison, Agri. Agts., Houston, Tex.; H. C. Fondren, Col. Agt., New Orleans, La.

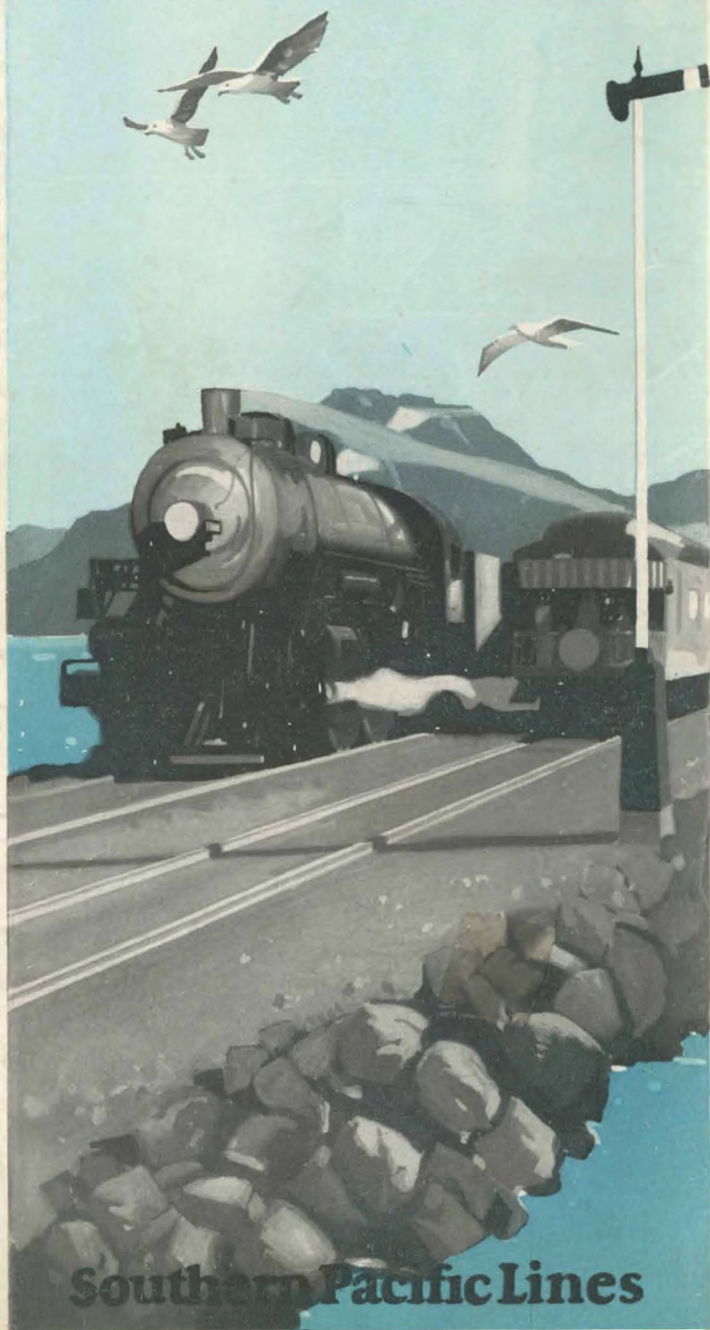
E. W. CLAPP, Traffic Manager, Chicago, Ill.

C. K. DUNLAP, Traffic Manager Texas Lines, Houston, Tex.
W. C. MCCORMICK, General Passenger Agent, Houston, Tex.
WM. SIMMONS, Traffic Manager, Sou. Pac. Steamship Lines (Morgan Line), New York, N. Y.
E. J. FENCHURCH, Gen. Freight and Passenger Agt., Tucson, Ariz.
JOHN M. SCOTT, Asst. Passenger Traffic Manager, Portland, Ore.
F. C. LATHROP, Asst. Passenger Traffic Manager, San Francisco, Cal.

C. S. FAY, Traffic Manager Louisiana Lines, New Orleans, La.
J. T. MONROE, General Passenger Agent, New Orleans, La.
H. LAWTON, Traffic Manager Mexican Lines, Guaymas, Mex.
J. D. MASON, General Passenger Agent, El Paso, Tex.
C. L. McFAUL, Asst. Passenger Traffic Manager, Los Angeles, Cal.
F. S. MCGINNIS, Passenger Traffic Manager, San Francisco, Cal.

Overland Route

Lake Tahoe Line



Southern Pacific Lines

Overland Route

Lake Tahoe Line



Southern Pacific Lines