

THE LURE OF A LAND BY THE SEA



On Lincoln Park Course, overlooking the Golden Gate
Southern Pacific Lines

California and How to Reach It

THE lure of California attracts the visitor from all parts of the world. Between snow-capped peaks and surf-lined beaches is embraced a land happily possessed of nature's richest gifts—a climate delightful at all seasons; a formation presenting every variety of scenery from pastoral to the most rugged; a productiveness that in volume and diversity never fails to astonish and landscapes outlined by a foliage or graced by a floral bloom that in uniqueness and brilliance remains ever in the mind as "Californian."

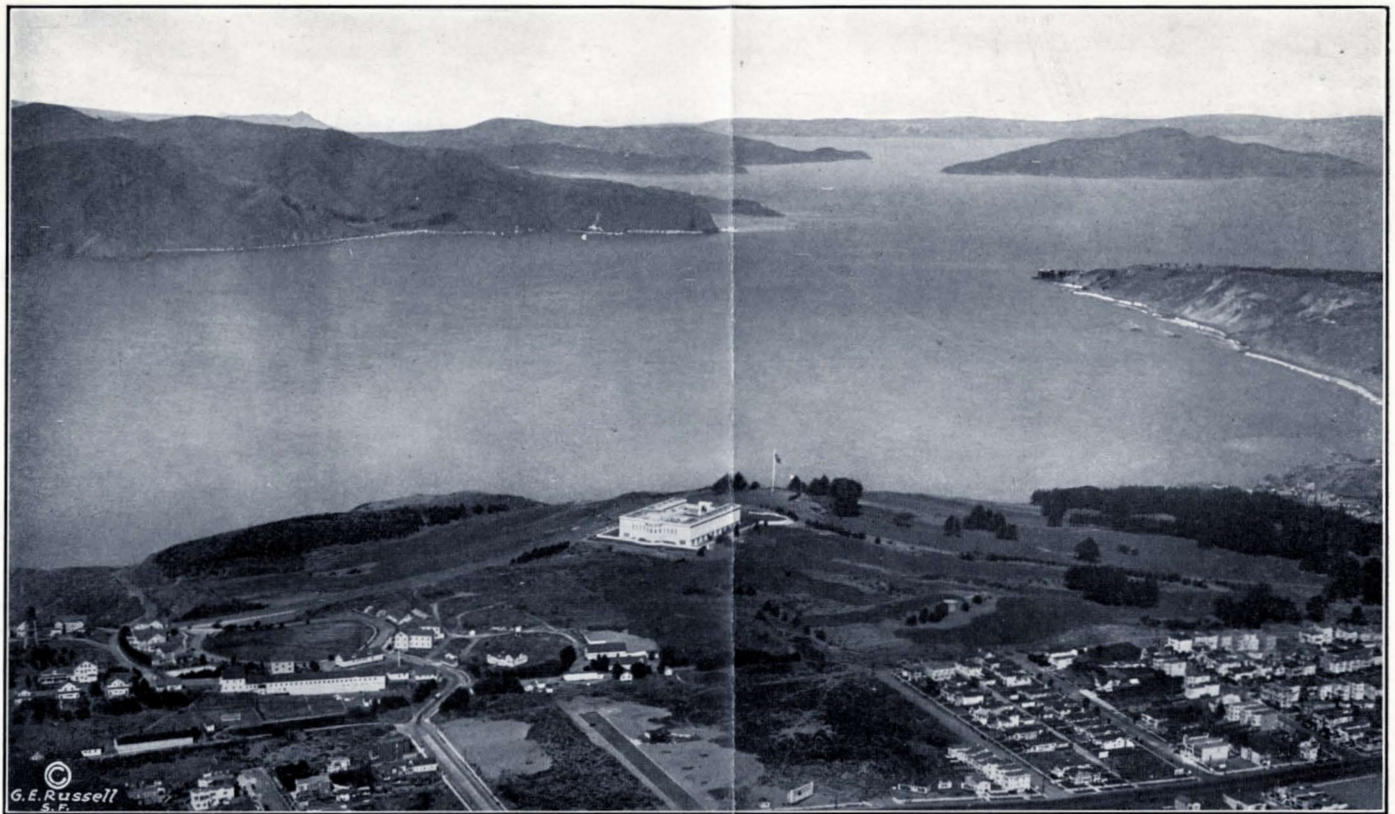
From the car windows of SOUTHERN PACIFIC trains California is continually on exhibition—its Sierra ridges, its streams and rivers, its orange and olive groves, its date palms, verdant valleys, miles of foothill orchards and its foaming beaches can each in turn be viewed as in an open book. Many of California's citizens today are among those who visited the Pacific Coast on pleasure or on business trips, and were won over by its charm. The desire to own a home in such a region is strong and the determination so often expressed by visitors, to return for that purpose, has many times been put in practice. In displaying these outdoor charms, the fertility of its soil and wealth of its natural resources, SOUTHERN PACIFIC trains have thus for years been California's untiring and dependable "traveling salesmen."

The southern entrance to California is over the "Sunset Route" from New Orleans, with SOUTHERN PACIFIC steamer connection from New York. This historic route leads through Louisiana, Texas, New Mexico and Arizona, crossing the line in a picture-desert skirting the Chocolate Mountains and Mount San Jacinto and passing within the shadows of Mount San Geronio, San Bernardino and San Antonio in the Sierra Madre; thence through the San Gabriel Valley to Los Angeles, and north via "Coast Line" or "San Joaquin Valley Line" to San Francisco. From El Centro, in Imperial Valley, the San Diego & Arizona Railway passing through the scenic Carriso Gorge forms the Short Line from the East to San Diego.

The "Golden State Route" from Chicago via Tucumcari, El Paso and Tucson thence follows the same pathway through the southwest to San Diego and Los Angeles.

The central entrance to California, from Chicago and the East, is by the "American Canyon Route" via Ogden and the Great Salt Lake Cut-off, through Utah and Nevada, crossing California's Sierra at the summit near Lake Tahoe, with historic Donner Lake flashing far below in its forest setting. Then for miles the route follows the rim of the American River Canyon with sweeping vistas into its rugged course, the train thence winding downward among orcharded foothills, passing within view of the famous gold fields of '49 and on through Sacramento to Oakland, with ferry steamer connection to San Francisco across the Bay.

The tourist from the North and East through Portland, Oregon, enters California by the "Shasta Route" over the summit of the Siskiyou. Mount Shasta—California's great snow mountain of the North—looms ahead and for four hours its graceful outline, ever changing to the windings of the train, remains in sight. The picturesque Sacramento River Canyon through Shasta Springs is then followed into the Sacramento Valley which is traversed to San Francisco Bay, thence to Oakland and by ferry to San Francisco—the City by the Golden Gate.



THE GOLDEN GATE, SAN FRANCISCO

California's Seaside, Valley and Mountain Resorts

San Francisco and Vicinity San Francisco delights the traveler with many distinctive charms. It is a cosmopolitan city, picturesquely set upon many hills on the northern end of a peninsula overlooking the mountain-rimmed Bay of San Francisco on the east and north, and the Pacific Ocean on the west—the famed Golden Gate joining them by its mile-wide passage. San Francisco's beauty of situation marks it as one of the favored cities of the world. The views from Telegraph Hill, Russian Hill, Nob Hill, Sutro Heights, and many other vantage points within city limits draw one again and again; while the outlook from Twin Peaks, the two cones to the southwest reached by auto boulevard, unfolds a bird's-eye view of city and surroundings.

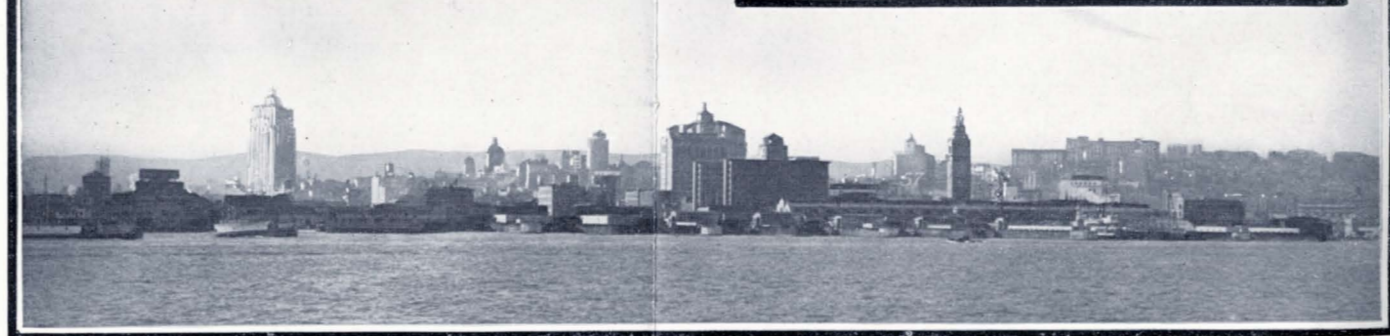
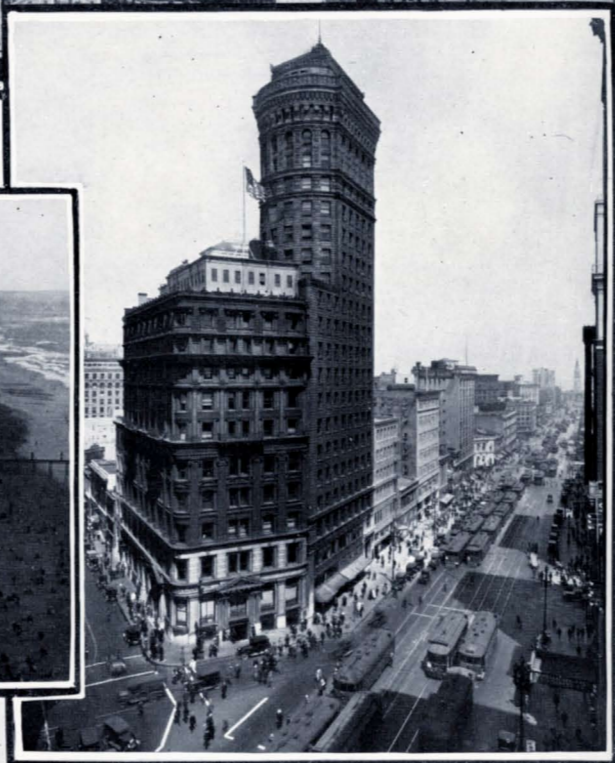
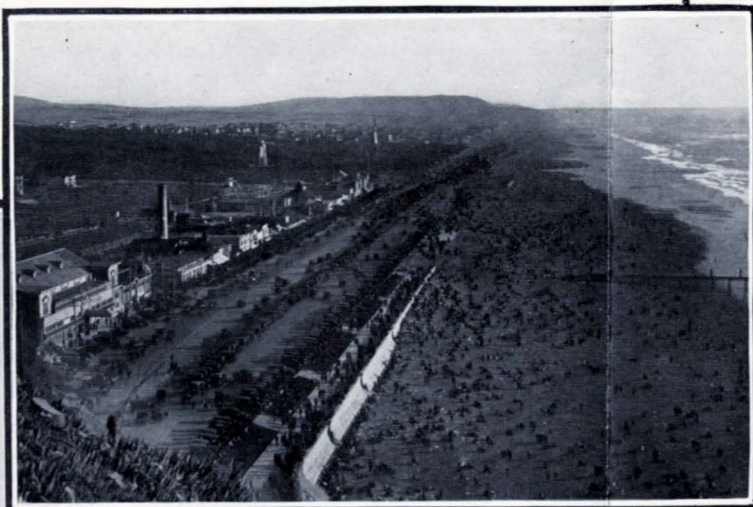
There is a snappy breeze from the sea. In its summer climate San Francisco is delightfully cool, and in winter spring-like. It is one of the most interesting of seaports. Its shops, its theatres, its many bohemian restaurants and cafes; Chinatown with its quaint oriental community and gorgeous bazaars, and the Latin quarter—each has its peculiar interest. Market Street, leading from the Ferry Building, is the main artery of the city and there are many diverging business streets in the downtown section. The several inviting residence dis-

tricts, the notable mansions, the Civic Center, museums, art galleries and monuments; the Presidio, Mission Dolores, Portsmouth Square, and other historic landmarks; the water front or *Embarcadero*, picturesque Fisherman's Wharf, Ocean Beach, Seal Rocks, and the Cliff House—all these attract the visitor. The Palace of Fine Arts remains today a noteworthy example of the superb structures of the Panama-Pacific International Exposition of 1915.

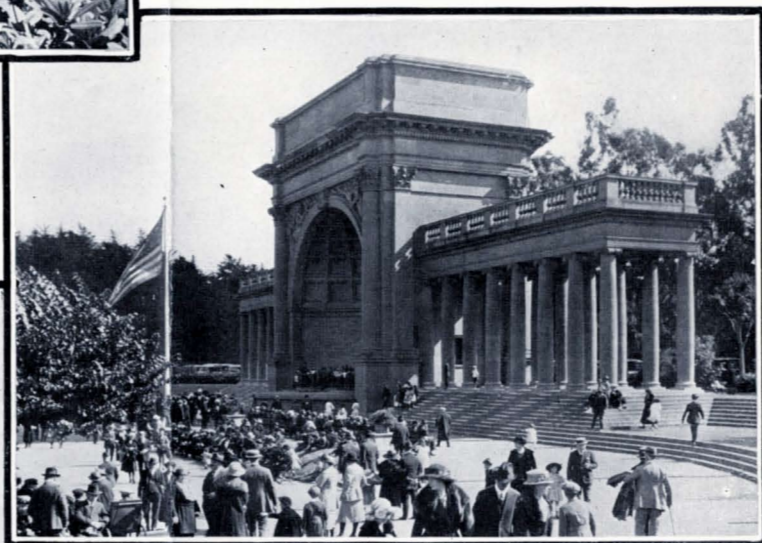
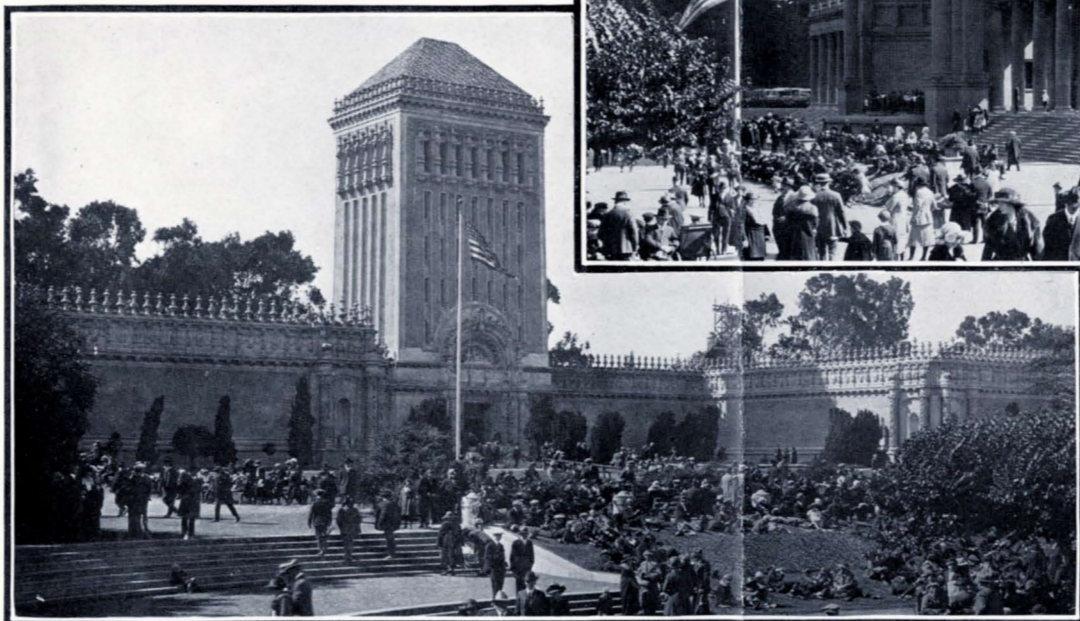
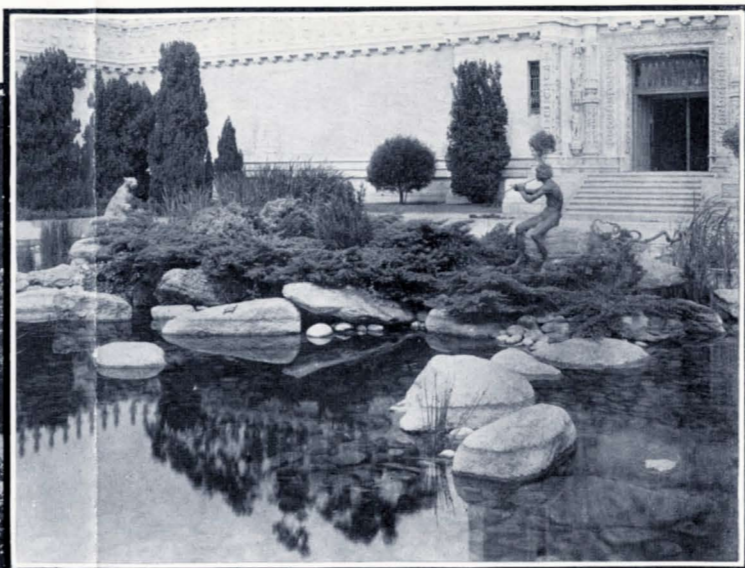
Golden Gate Park is one of the famous parks of the world. It is four miles long and a half mile to a mile wide, with its western edge touching the ocean. It is an achievement in landscape gardening. Miles of fine driveways and bridle-paths lead in every direction. It is the center of the city's outdoor life and there is scarcely a sport that is not provided for.

San Francisco's hotels are known to world travelers—notably the Palace, St. Francis and Fairmont; and there are numerous other first-class hotels besides many comfortable apartment houses, with accommodations to care for all visitors.

The islands in San Francisco Bay include Mare Island, where is located the United States Navy Yard; Yerba Buena, home of the Government Naval Receiv-



A TYPICAL GROUP OF SAN FRANCISCO SCENES. THE BUSINESS SECTION TO THE SOUTH—THE BEACH FROM SUTRO HEIGHTS—DOWN MARKET STREET—THE WATER FRONT WITH FERRY BUILDING IN FOREGROUND



GOLDEN GATE PARK, SAN FRANCISCO, FROM ITS FASCINATING LANDSCAPES TO ITS STATELY MUSEUM, WELL REPRESENTS THE BEAUTY OF CALIFORNIA



THE DAILY "FLOWER SHOW" ON GRANT AVENUE, SAN FRANCISCO

ing Ship; Angel Island (U. S. Immigration Station), and Alcatraz (U. S. Disciplinary Barracks).

Oakland.—The progressive and important city of Oakland lies across San Francisco Bay, to the east. Situated on a gently sloping plain, its streets and boulevards of homes, with blooming gardens, reach far up the heights of the range of hills which form its background. Oakland is an attractive city with fine public buildings. The Hotel Oakland provides excellent service and accommodations. Lake Merritt, in the center of the city, is surrounded by parks, homes, and various public structures, and the boulevards encircling it form part of a chain of auto roads which traverse the East Bay region.

The Southern Pacific has an extensive electric train system in Oakland, Berkeley and Alameda, and its fine trans-bay ferry steamers give regular and frequent service to and from San Francisco, the four-mile ferry trip revealing the beauties of the Bay.

Berkeley, directly north of Oakland, is the seat of the University of California. It is situated opposite the Golden Gate and is a pleasant place of residence. Hotel Whitecotton and also Hotel Claremont provide good service.

Alameda joins Oakland on the south. It is essen-

tially a home city and has the added attraction of popular bathing beaches.

Mount Tamalpais and Muir Woods.—The trip to Mount Tamalpais, the "Guardian of the Golden Gate," is one that should not be missed. The crossing of the Bay, six miles by ferry steamer to Sausalito—with bungalows peeping from its tree-clad slopes—gives one a splendid view of the great landlocked harbor with its mile-wide passage leading to the Pacific. From Sausalito electric trains run five miles to Mill Valley, whence the ascent is made on the Mt. Tamalpais & Muir Woods Ry., known as "the crookedest railroad in the world."

Muir Woods National Monument is reached by branch line from the station of Mesa. This sylvan wilderness was named in honor of John Muir, the celebrated naturalist. There are 295 acres of towering redwoods, many of them 200 feet in height.

Humboldt, Mendocino, Sonoma, Napa and Lake Counties.—The North Coast outing territory, also reached by ferry to Sausalito, thence via Northwestern Pacific Railway, includes the Big Trees of Humboldt County; the Mad and the Eel Rivers; the Russian River with its many hotels and camping places, and the chain of picturesque lakes and mineral spring resorts of Lake County.

Byron Hot Springs, on the eastern side of Mount Diablo, and within two and a half hours via Southern Pacific from San Francisco, has a comfortable hotel with excellent service. Its modernly equipped medicinal mineral and mud baths are well known.

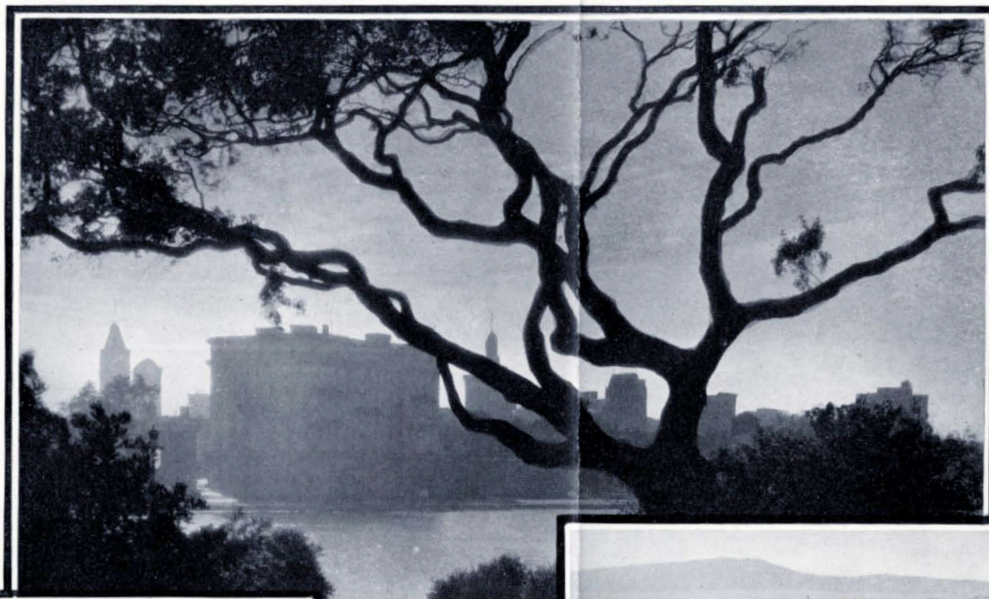
The "Bret Harte" Country.—In the vicinity of Angels, Jamestown, Tuolumne, and Sonora there is an interesting region known as the "Bret Harte" country, reached by Southern Pacific "San Joaquin Valley Line" to Oakdale, thence via the Sierra Railway. The trip can include the Calaveras Big Tree Grove.

Sacramento and the Sacramento Valley.—Sacramento, capital of California, is a beautiful city situated on the east bank of the Sacramento River, one of the great waterways of the United States and navigable for seventy-five miles above Sacramento. Southern Pacific's "Netherlands Route" river steamers ply between Sacramento and San Francisco, a distance of 120 miles.

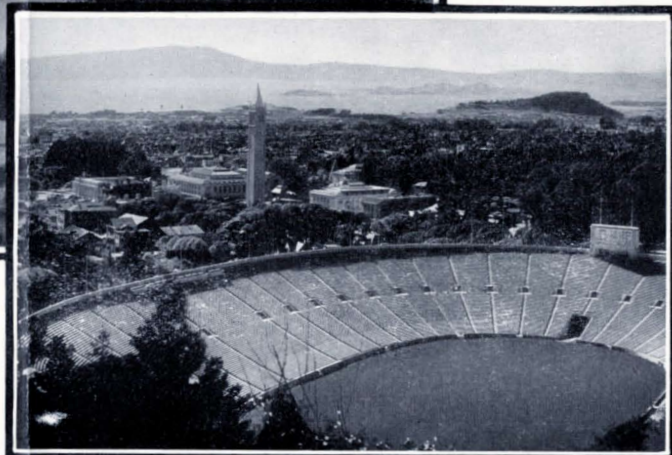
Sacramento's capitol building is an imposing structure costing over three million dollars, and contains one of the best law libraries in America. It stands in a beautiful park of thirty-five acres containing 120 varieties of trees from all regions of the world. There are many fine public buildings, modern hotels and an attractive shopping district.

In the Sacramento Valley, north of Sacramento, are the prosperous valley cities of Marysville, Chico, Oroville, Red Bluff and Redding; Woodland, Arbuckle, Williams, Colusa, Willows, Orland and Corning—all in a fertile region of wheat fields and alfalfa, thriving orchards, orange groves, rice plantations and pasture lands. The earliest oranges shipped out of California come from Butte County in the Sacramento Valley.

Shasta Resorts in the Sacramento River Canyon.—Along the course of the Upper Sacramento River reached via the "Shasta Route" through Davis or Roseville, are many summer resort inns and cottages dotting the pine-clad sides of the winding canyon.



LOOKING ACROSS LAKE MERRITT, OAKLAND



CALIFORNIA MEMORIAL STADIUM, BERKELEY



THE STATE CAPITOL AT SACRAMENTO

The points of interest include Castella, Castle Rock, the granite spires of Castle Crag; Dunsmuir, Shasta Retreat, Mossbrae Falls and Shasta Springs, where travelers may drink from the bubbling fountain at the station. The Shasta Springs Hotel and cottages are on the timbered mesa above, reached by a cable-incline car. Mount Shasta, 14,380 feet, looms to the north. Approaching this region between Red Bluff and Redding, Lassen Peak—45 miles to the east, in Lassen Volcanic National Park—is visible from the car windows.

The Lake Tahoe Country.—Lake Tahoe in the Sierra Nevada is reached from the East via Southern Pacific "American Canyon Route" to Truckee, thence fifteen miles by a branch line. It is one of the most beautiful of mountain lakes, in a region ideal during summer months. The coloring of Lake Tahoe's waters—a brilliant emerald and indigo blue—is remarkable. Twenty-three miles long, thirteen miles wide and over



IN THE SACRAMENTO RIVER CANYON—CASTLE CRAG IN DISTANCE

1,800 feet deep, it is completely hemmed in by peaks varying from 8,250 to 11,120 feet above sea level. The elevation of the lake is 6,280 feet. Its pine-fringed shores have many charming resorts and private homes. The Tahoe Tavern has excellent accommodations and service. The lake is noted for its big trout. Many smaller lakes and trout streams abound.

Tourists from the East may, under through ticketing arrangements during season, July 15th to September 17th, detour from Truckee via Lake Tahoe and the Tioga Pass auto road (a 2-day trip) to Yosemite National Park, connecting at Merced with Southern Pacific "San Joaquin Valley Line" to destination.

The trip to Lake Tahoe from San Francisco is through the foothill orchards and picturesque surroundings of Newcastle, Auburn, Colfax, Applegate, Gold Run, Dutch Flat, and Towle, thence along the rim of the American River Canyon.



LOOKING ACROSS LAKE TAHOE FROM THE TAVERN GROUNDS



THE CASA DEL REY AT SANTA CRUZ

Down the Peninsula and "Coast Line"

From Third Street Station, San Francisco, the Southern Pacific "Coast Line" leads down the Peninsula, through Burlingame, San Mateo, San Carlos, Redwood City, Atherton, Menlo Park and Palo Alto, in the Santa Clara Valley. Palo Alto is seat of Leland Stanford Junior University.

The Santa Clara Valley every year becomes more popular with California's visitors. San Jose is the "garden city" of this region. A trip through the valley in March or early April gives the tourist an opportunity of viewing seventy-five miles of orchards in bloom. Lick Observatory, on summit of Mount Hamilton, is reached from San Jose by auto stage. Other places are Los Altos; Los Gatos, looking into the valley from the foothills; Santa Clara; Saratoga, with its annual "Blossom Festival"; and Congress Springs—all reached from Palo Alto or San Jose, by the Peninsula Electric Railway.



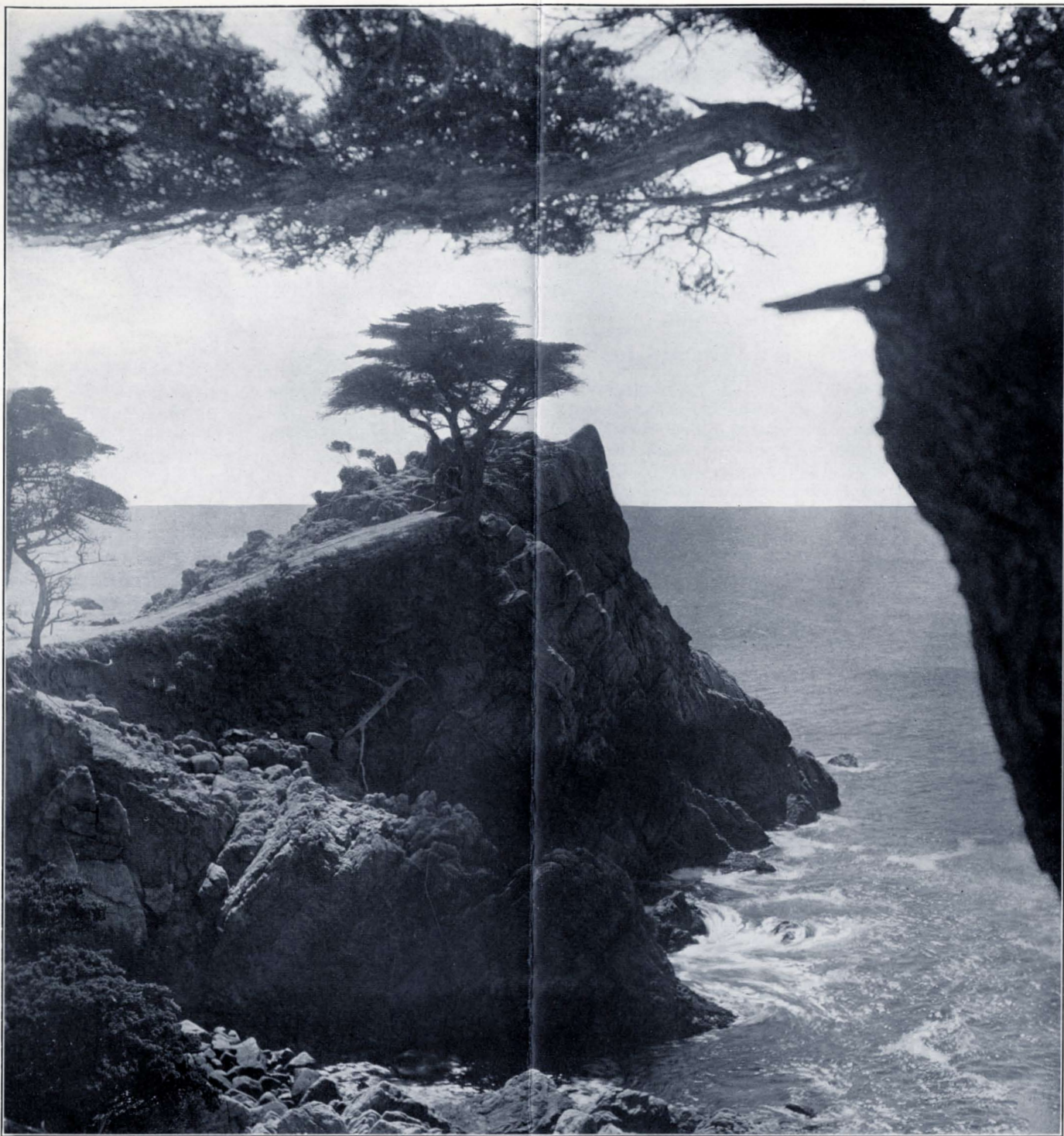
HOTEL CAPITOLA AT CAPITOLA-BY-THE-SEA

To the south lie the prosperous valley cities of Gilroy and Hollister, with Watsonville in the Pajaro Valley and Salinas at foot of the Salinas Valley.

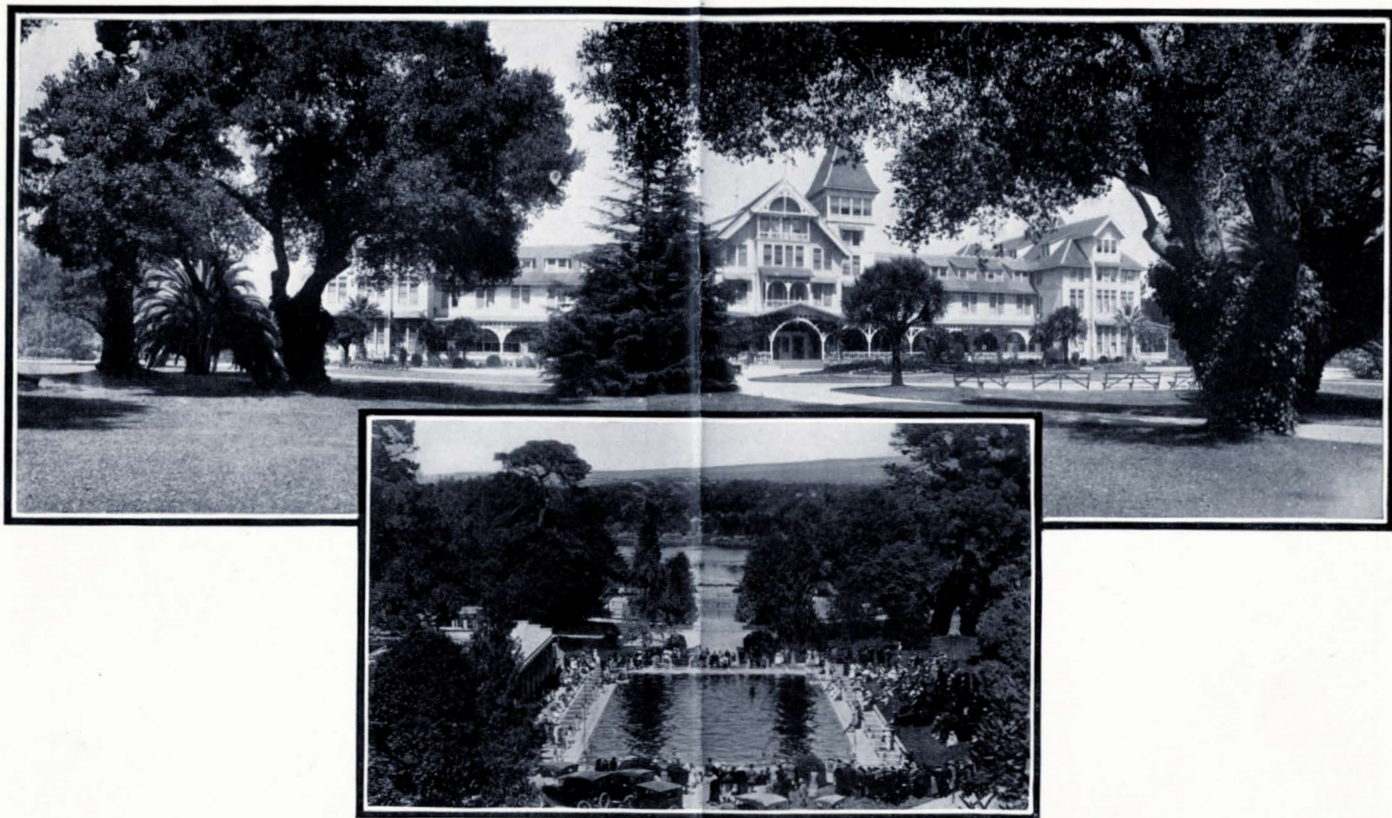
Santa Cruz, on upper end of Monterey Bay, is a popular seaside resort, and the principal city in this region. It has several comfortable hotels in addition to its well-equipped and commodious beach hotel—the Casa del Rey and the Casino—open all year. Surf bathing and deep-sea fishing for the king salmon are popular sports. The Santa Cruz Golf Links are among the best on the Coast. The Santa Cruz Mission, established in 1771 by the Franciscans, has entirely disappeared, but the old burial ground remains as a relic. Within six miles by rail or auto road are the Santa Cruz Big Trees (*Sequoia sempervirens*). The largest in the grove is the Giant, 306 feet high and 64 feet in circumference. In the Santa Cruz Mountains are many vacation resorts. The California State Redwood Park lies to the northwest in the Big Basin.



SANTA CLARA VALLEY WITH ORCHARDS IN BLOSSOM



THE GNARLED OLD CYPRESS TREES ON MONTEREY PENINSULA ARE THE AMERICAN COUNTERPARTS OF THE CEDARS OF LEBANON



HOTEL DEL MONTE AT DEL MONTE
THE ROMAN PLUNGE IN THE DEL MONTE GROUNDS

Capitola-by-the-Sea is four miles south of Santa Cruz. The attractive Hotel Capitola, standing close to the fine beach, provides excellent service and is a pleasant stopping place during the summer months. Bathing, fishing, golfing and evening entertainment can be enjoyed by guests. A lagoon for aquatic sports is a novel attraction.

Monterey and Del Monte—There are no more romantic and beautiful spots in the West than Monterey and Del Monte. In 1542 Cabrillo landed in the Bay of Monterey, and Vizcaino in 1602 claimed the country for the King of Spain, giving to the region the name of his patron, the Count de Monterey. In 1770 Gaspar de Portola, first governor of Alta California, established a presidio and garrison at Monterey, and it remained the capital of California until 1849. Relics of these early days include the old Custom House, Colton Hall, and the Mission church of San Carlos de Borromeo.

The Bay of Monterey sweeps in a half circle with miles of beach and rocky bluffs. Its waters abound in fish life; steelhead trout, salmon, sea bass, yellow-tail, barracuda, and tuna are caught in season.

Hotel Del Monte is among the foremost of California's all-year resort hotels. It stands in a park of 125 acres, comprising lawns and flower beds interspersed with ancient oaks and stately pines, the result of over

thirty years' landscape gardening. Its grounds contain over thirteen hundred varieties of plant life.

Every facility for outdoor sports is provided, including golf links, polo fields, tennis courts, trap-shooting grounds, and an open-air Roman plunge. There is also a bathing beach and indoor swimming pool.

The scenic Seventeen-Mile Drive starts and ends at the hotel, winding through park and forest and along the rugged sea coast, passing among the Monterey cypress trees, many of them thousands of years old.

Del Monte Lodge on Pebble Beach, Carmel Bay, is one of the most complete hotel club houses on the coast. It is six miles from Del Monte by automobile. There is good fishing in the bay, and the wonderful marine life may be viewed through glass-bottomed boats.

Pacific Grove and Asilomar.—On the outer edge of the Monterey Peninsula is Pacific Grove, a popular resort with an even and mild climate. On the coast just beyond is Asilomar, with lodge and camping ground of the Y. W. C. A.

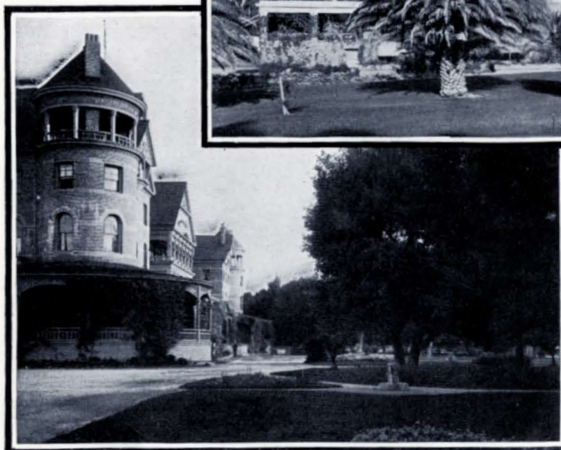
Carmel-by-the-Sea is five miles from Monterey by auto stage. It lies among the pines facing Carmel Bay and comprises a colony of artists and literary men and women. Golf links and tennis courts are available to visitors. The Pine Inn and La Playa provide com-



PEBBLE BEACH, MONTEREY BAY
PASO ROBLES HOT SPRINGS HOTEL



BYRON HOT SPRINGS HOTEL



PEBBLE BEACH GOLF COURSE
CARMEL BAY



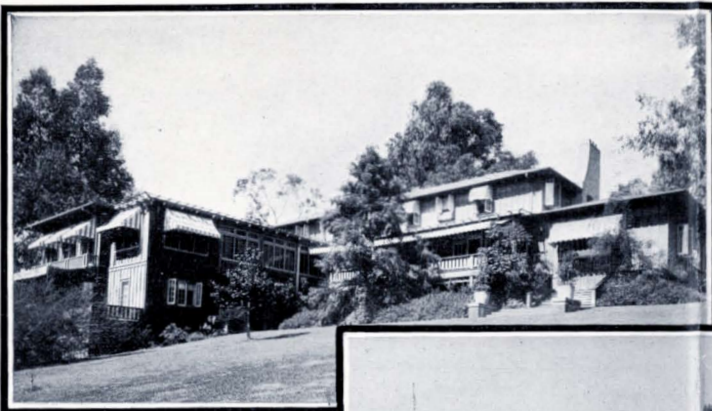
fortable quarters and good service. Near the village is the old Mission San Carlos del Carmelo, established in 1770 by Padre Junipero Serra, whose remains lie buried beneath the altar.

Highlands Inn, four miles south of Carmel, is reached by auto stage from Monterey. It is an attractive bungalow hotel, built high upon the steep timbered bluffs that here slope to the rock-bound shores. It faces the open ocean and the view from its lobby windows is superb. Its comfortably furnished cottages half circle the main buildings and stand beneath the pines.

Paso Robles Hot Springs.—Midway between San Francisco and Los Angeles is Paso Robles Hot Springs with its comfortable Hotel El Paso de Robles, and its well-known medicinal mineral waters. It has modern baths, swimming pool, and every required facility for treatment, including sulphur and mud baths. Golf links and pleasant drives make this retreat most attractive.

Atascadero Beach, Morro Bay and El Pismo Beach.—*The Cloisters* is a well-equipped seaside hotel in mission style on Morro Bay, reached by auto from Paso Robles Hot Springs or Atascadero. Morro Rock here rises from the sea. The crescent beach is three miles long. There is a golf course in the foothills. A few miles south is San Luis Obispo at base of the Santa Lucia Mountains, and just beyond is El Pismo with its seventeen miles of surf-rolled sands.

Santa Barbara.—On Southern Pacific "Coast Line" 104 miles north of Los Angeles and with its curving beach facing directly to the south, is Santa Barbara. Its mild climate, attractive situation and surroundings have placed it among California's best known all-year resorts. From the sloping foothills of the towering Santa Ynez Range the city looks seaward over the blue waters of the channel. Many fine winter homes have been established in Santa Barbara, and its avenues of residences, its flower gardens, and semi-tropical plants



EL ENCANTO
THE BEACH AT SANTA BARBARA

SANTA BARBARA'S IDEAL HOTELS
HOTEL ARLINGTON

THE SAMARKAND
EL MIRASOL

and trees charm the visitor. There is a pier, a bathing beach, and a large indoor salt-water swimming tank. Horseback riding is a popular pastime. The Plaza del Mar, a broad driveway lined with palms, is built along the beach.

A Spanish settlement and presidio were established here in 1782 by Ortega, the present city dating from 1851. Many relics of early days still remain, among them the old Mission Santa Barbara, founded in 1786.

Upon the horizon across the channel are seen a group of islands, the largest being Santa Cruz, Santa Rosa, and San Miguel, the last the burial place of the Spanish explorer Rodriguez Cabrillo, who there died in 1543.

Among Santa Barbara's comfortable hotels is the Arlington, a striking structure, designed and furnished throughout in Spanish mission style. It is about a mile uptown, its grounds facing on State Street, just beyond the business section. It is handsomely equipped, providing excellent service.

The bungalow-hotel, El Mirasol (The Sunflower), faces on Alameda Park and occupies an entire block.

The main building in Spanish style is beautiful in its interior fittings. Vine-clad bungalows surround its garden.

The Samarkand is a most unique and attractive stopping place, with many novel features and service of the best.

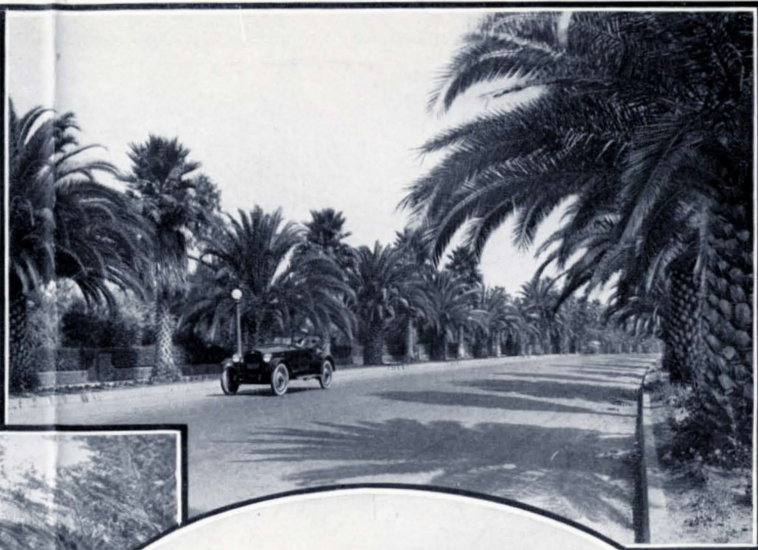
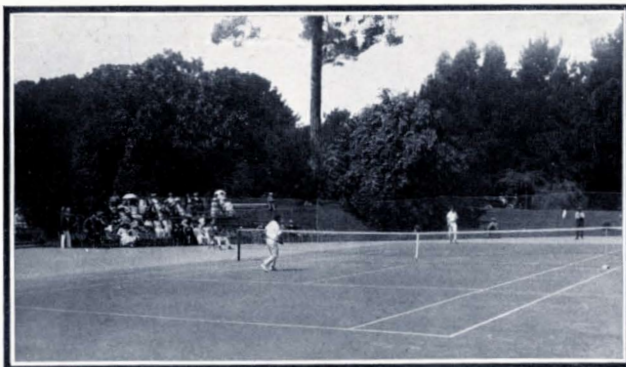
El Encanto (Enchantment), also a bungalow-hotel, built on the crest of Mission Ridge 500 feet above the sea, commands a wide view of city and surroundings. Its cottages are tasteful in their appointments.

Montecito and Miramar.—Four miles south of Santa Barbara is Montecito, bordering on the sea. It contains many mansions and bungalows amid foliage and landscape gardens. Adjoining it is Miramar, with bungalow-hotel and cottages surrounded by lawns, and flowers. Its bathing beach is a special attraction.

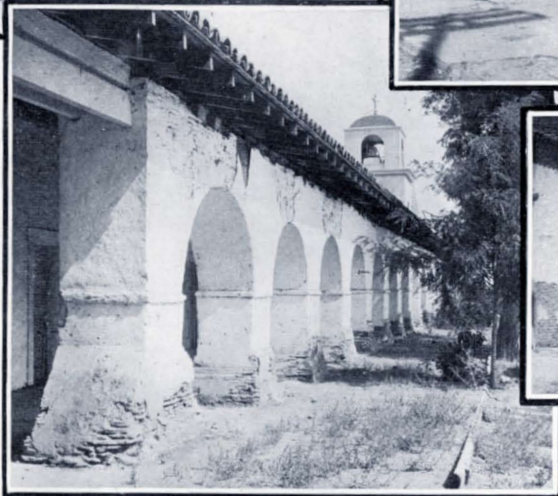
Ventura and the Ojai Valley.—Ventura is a pleasant seaside resort, with the old Mission San Buenaventura in its center. Fifteen miles inland is Ojai Valley with comfortable hotels and mineral springs.



THE PACIFIC OCEAN ROLLING IN ON CALIFORNIA'S SHORES PRESENTS VIEWS AS STRIKING AND VARIED AS HER
LANDSCAPES BETWEEN THE SIERRA AND THE SEA



CALIFORNIA'S CLIMATE MEANS OUTDOOR SPORTS AND RECREATION ALWAYS



SOUTHERN PACIFIC "COAST LINE" BETWEEN SAN FRANCISCO AND LOS ANGELES FOLLOWS THE TRAIL OF THE OLD FRANCISCAN MISSIONS



LOOKING ACROSS PERSHING SQUARE, LOS ANGELES

Los Angeles and Vicinity Los Angeles is the tourist center of southern California, and is the heart of its activities. The first settlement was made by Spaniards in 1781.

Built upon the plains sloping seaward from the Sierra Madre foothills, its northern and western suburbs reach altitudes affording inspiring views of surrounding valleys with the ocean in the distance. The business district of Los Angeles, with its handsome shops and modern buildings, is striking, and the throngs who all the year visit for a season or pass through this gateway find ample hotel accommodations. There are a number of first-class hotels that are popular with travelers—the Ambassador, luxurious in its furnishings and complete in its entertainment facilities for tourists, the Alexandria, the Biltmore, and many others to choose from. For those who prefer them, furnished apartments and bungalows are available. Los Angeles also has its Chinatown, and other foreign sections, entertaining because of their novelty. Within the city limits there are twenty-one parks, and many tree-shaded boulevards and avenues lined with villa homes.

An interesting reminder of early days is the old church of "Our Lady of the Angels"—the Plaza or Mission Church. While not one of the original chain of Franciscan Missions, it was established in 1811 for the service of the settlers who formed the little pueblo which today is Los Angeles. The church has been restored, and contains many relics of the Indians and Franciscans.

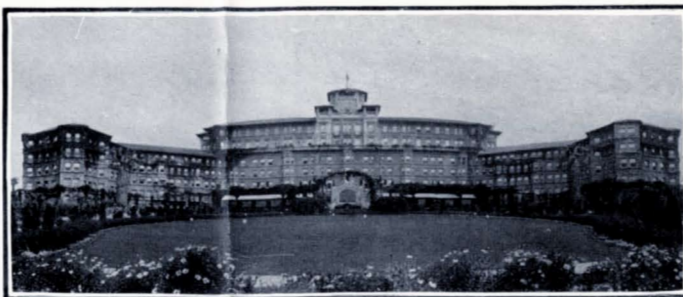
Los Angeles is especially favored in its location—between the mountains and the sea—a region of diversified landscape, broad valleys, orange groves, vineyards, orchards, and cozy bungalows. About Los Angeles are no fewer than fifty cities and towns, with attractions that hold the visitor, and all are quickly, comfortably and cheaply reached by the Pacific Electric Railway, excursion cars running daily.

Hollywood is one of the attractive residence sections of the city and is also center of the moving picture industry. Here, too, is performed annually, commencing in July, the Pilgrimage Play, an impressive sacred drama. A few miles west, in the foothills of the Santa Monica Mountains, is Beverly Hills, with Beverly Hills Hotel and Bungalows, set in a semi-tropic park of sixteen acres.

Long Beach.—Twenty-two miles south from Los Angeles and quickly reached by Pacific Electric Railway, is a notable resort with fourteen miles of sandy beach swept by the rolling surf of the Pacific. Added to its splendid bathing facilities and its numerous seaside pleasures and places of entertainment, is its attractiveness as a commercial and residence city. The Hotel Virginia facing the beach and open the year round provides all modern luxuries and conveniences, with excellent service, and there are many other hotels and comfortable stopping places for families.



LOS ANGELES IN ITS HANDSOME BUSINESS STRUCTURES CONFORMS TO THE BEAUTY OF ITS MANY CITY PARKS



HOTEL RAYMOND, PASADENA
HOTEL MARYLAND, PASADENA

HOTEL HUNTINGTON, PASADENA
HOTEL VIRGINIA, LONG BEACH

HOTEL GREEN, PASADENA

Many Seaside Resorts near Los Angeles.—Within a short ride of from fifteen to twenty miles west from Los Angeles by the Pacific Electric Railway are numerous other resorts by the sea which offer much enjoyment in their various attractions. They are widely known as the Los Angeles Beaches. Santa Monica, Ocean Park, and Venice join boundaries in a continuous stretch of several miles of bathing beaches and are attractive home cities, backed by the Santa Monica Mountains. Hermosa and Redondo Beach follow, and Huntington, Newport, Balboa, and Seal beaches join Long Beach to the south. At all of these resorts are many amusement features, and in addition to the surf bathing there are bathing pavilions and swimming pools. To the south also lies San Pedro (Los Angeles harbor), port of departure for the Magic Isle of Santa Catalina.

Santa Catalina Island.—Avalon, on the island of Santa Catalina, twenty-six miles from the mainland, is reached from San Pedro (Los Angeles harbor) by a steamer trip of two hours across the channel. Avalon Bay sweeps in a graceful curve and, in approaching it, the view of the sprightly resort village with its mountain background is one of the most novel on the coast.

This fascinating island is twenty-two miles long and varies from a quarter of a mile to seven and one-half miles in width, a region of mountains, circling bays,

lofty cliffs, canyons and smooth beaches. For the lover of hiking, mountain climbing or horseback riding there are many enjoyable trips into the heart of the island, Mount Orizaba rising to an elevation of 2,109 feet. Both the golf links and the tennis courts are only a short distance from the center of Avalon. Catalina is a fisherman's paradise at all seasons, noted for many varieties of giant game fish.

One of the chief attractions of the island is the Marine Gardens. The gorgeous coloring; the green, gold, blue, and purple fish floating and darting over shell-encrusted rocks or lurking in the waving fronds of giant seaplants, are plainly visible through the glass-bottomed boats.

The St. Catherine Hotel stands upon the shores of a little bay directly west of Avalon. Here visitors are provided with excellent service. In the village are other hotels and cottages.

Pasadena.—Among the famous inland resort cities nearest to Los Angeles is Pasadena, charmingly situated in the San Gabriel Valley. It has many palm-bordered avenues and sumptuous homes. Pasadena entertains many eastern visitors within her gates throughout the season and is well prepared to receive them. Its principal resort hotels are the Huntington, Raymond, and Green, open during the winter season only, and the Maryland and Vista Del Arroyo open all the year.



BETWEEN SAN FRANCISCO AND LOS ANGELES THE SOUTHERN PACIFIC "COAST LINE" FOR 100 MILES LOOKS OVER THE SPARKLING BREAKERS AND FOAMING SURF OF THE PACIFIC OCEAN



THE NUMEROUS SEASIDE RESORTS COMPRISING THE "LOS ANGELES BEACHES" PROVIDE A PLAYGROUND FOR CONTINUAL PLEASURE AND ENJOYMENT



MOUNT RUBIDOUX, RIVERSIDE

GLENWOOD MISSION INN, RIVERSIDE
HOTEL AMBASSADOR, LOS ANGELES

BEVERLY HILLS HOTEL, BEVERLY HILLS

Orange groves skirt the foothills of the Sierra Madre Range to the north. Above its skyline rise Mount Lowe and Mount Wilson, the former reached from Los Angeles and Pasadena by a scenic trolley trip through a highland region of rare beauty. The way leads past Altadena to Rubio Canyon, whence the passenger is carried up the famous incline to Echo Mountain and from there another trolley line runs to Alpine Tavern, nestling in a mountain-side ravine. A trail leads to the summit of Mount Lowe, 1,000 feet higher. On the summit of Mount Wilson is a great astronomical observatory, with largest telescope in the world. It is reached by auto or trail from the town of Sierra Madre.

Pasadena is particularly attractive to the eastern visitor because of the wealth of semi-tropic trees and flowers. Its Tournament of Roses on New Year's Day is famous and vies in popularity with the football "classic" played on same day.

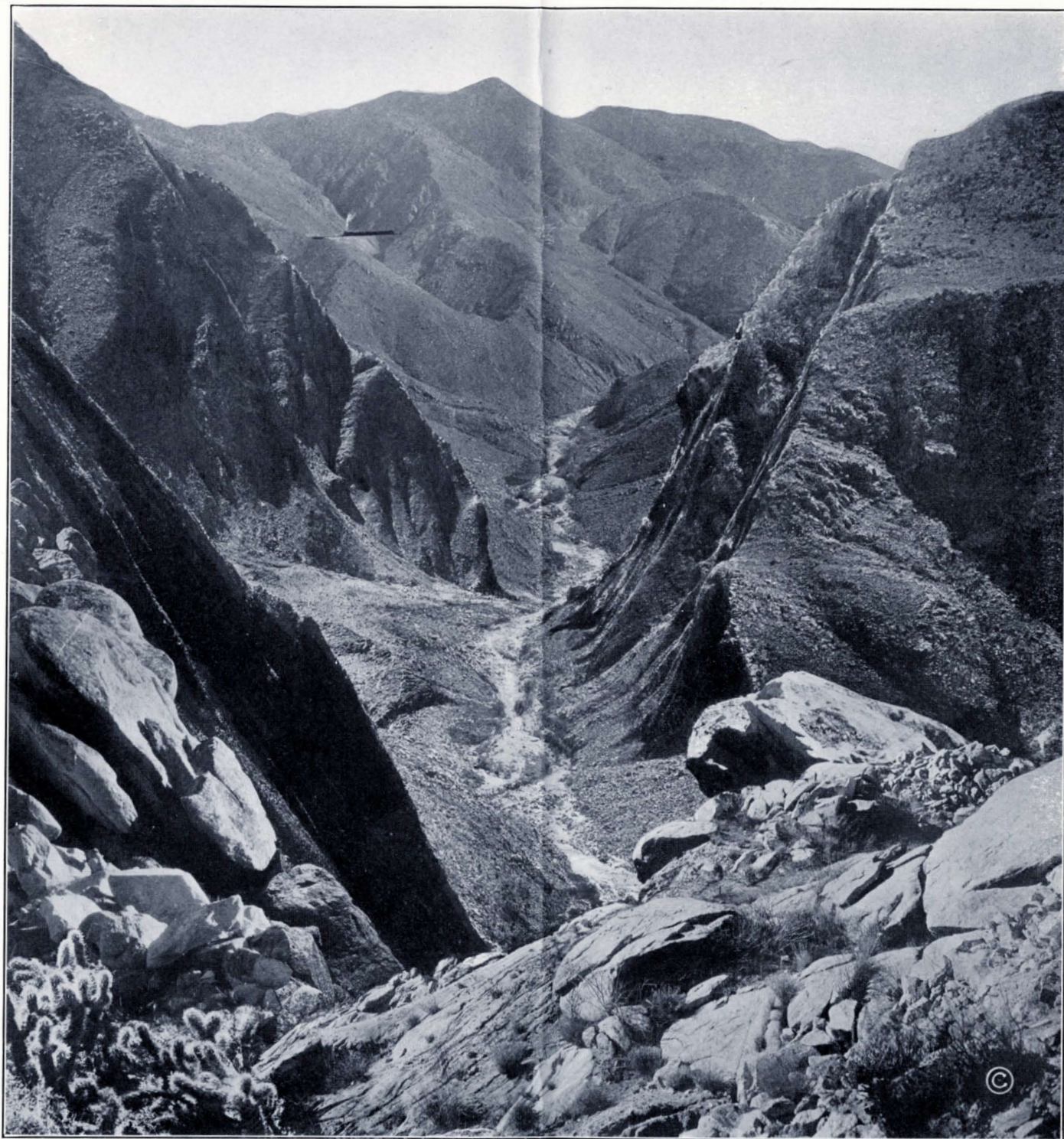
San Gabriel with its old Mission San Gabriel and Spanish relics, is an interesting little town ten miles east of Los Angeles. The Mission, founded in 1771, and the fifth one established in California, is well preserved, services being held regularly. San Gabriel was one of the most prosperous of the Franciscan establishments and for years was known as the "Pride of the Missions." Today San Gabriel is noted for its Mission Play, a realistic portrayal of the history of the Missions.

Riverside has a very unique hotel in the Glenwood Mission Inn, well known to pleasure travelers. The romantic history of early days is well preserved in its construction and furnishings. It is a modern hotel, combining the picturesqueness of the eighteenth century with the luxury of the twentieth. It is a cloistered building with tiled roof, arched porches, many a gable and built around a spacious court. The tower is a campanile, with twelve ancient bells, where vesper hymns and old Spanish tunes are played. The Inn is open all the year. Surrounding Riverside are miles of auto drives lined with tall eucalyptus, pepper and magnolia trees.

Above Riverside rises Mount Rubidoux, surmounted by a cross dedicated to Padre Junipero Serra, founder of the missions. The annual Easter service which is held on the Mount has become well established as a pilgrimage joined in by residents and visitors.

Redlands.—Redlands is a beautiful city at the foot of Mount San Bernardino, and within sight of Mounts San Gorgonio and San Jacinto. It is surrounded by orange groves and has many charming residences in park-like settings. Its chief show place is Canyon Crest Park, or Smiley Heights, noted for its floral display and wide outlook on mountains and valleys.

San Bernardino.—San Bernardino is in the eastern section of the orange belt and may be included with the others mentioned in daily excursions by rail or auto.



FOR ELEVEN MILES THE SAN DIEGO AND ARIZONA RAILWAY TRAVERSES THE WONDERFUL CARRISO GORGE
EVERY TURN OF THE ROAD AFFORDING THRILLING VIEWS



BALBOA PARK, SAN DIEGO



HOTEL DEL CORONADO AT CORONADO BEACH

from Los Angeles. To the north are the San Bernardino Mountains, from which the city gets its name, rising to a height of 5,000 to 11,000 feet, where lie Big Bear Lake and Arrowhead Lake, surrounded by beautifully timbered shores. The scenic "101-Mile Drive on the Rim of the World" leads through this region. The drive is made by regular auto stage service from San Bernardino and Redlands.

San Diego and Vicinity.—San Diego is the southernmost California city on the Pacific Coast. It was here that Padre Junipero Serra, on July 16, 1769, founded the first of the California missions—the Mission San Diego de Alcalá.

As the birthplace of California, San Diego is particularly rich in historic associations. The old mission; the ancient palms; the padres' irrigation dam; Presidio Hill; and such romantic reminders as Ramona's Marriage Place—are but examples of what it has to offer.

Situated on the Bay of San Diego, this attractive city is backed on the east by mountain ranges and valleys. On the west, the promontory of Point Loma juts into the sea, overlapping the low, slender peninsula of Coronado, and between the two lies the entrance to the sheltered harbor.

Balboa Park, comprising 1,400 acres, is in the center of the city. It was here that the Panama-California Exposition was held and fifteen of its permanent buildings remain on this superb spot. The main buildings of the western portion are occupied by the San Diego Museum.

San Diego has many fine business streets, shops, and residences and its healthful and equable climate makes it delightful at all seasons. There are several first-class hotels, including the U. S. Grant and the Hotel San Diego, and also many comfortable apartment houses.

Coronado Beach.—On the ocean side of the peninsula across the Bay, connected by ferry with San Diego, is one of California's most favored all-year pleasure places. The Hotel del Coronado, among the largest and best known of resort hotels, stands upon the beach and is surrounded by lawns and flowers and tropical verdure. It is built around a patio—a garden of rare shrubs and flowering plants—more than an acre in extent.

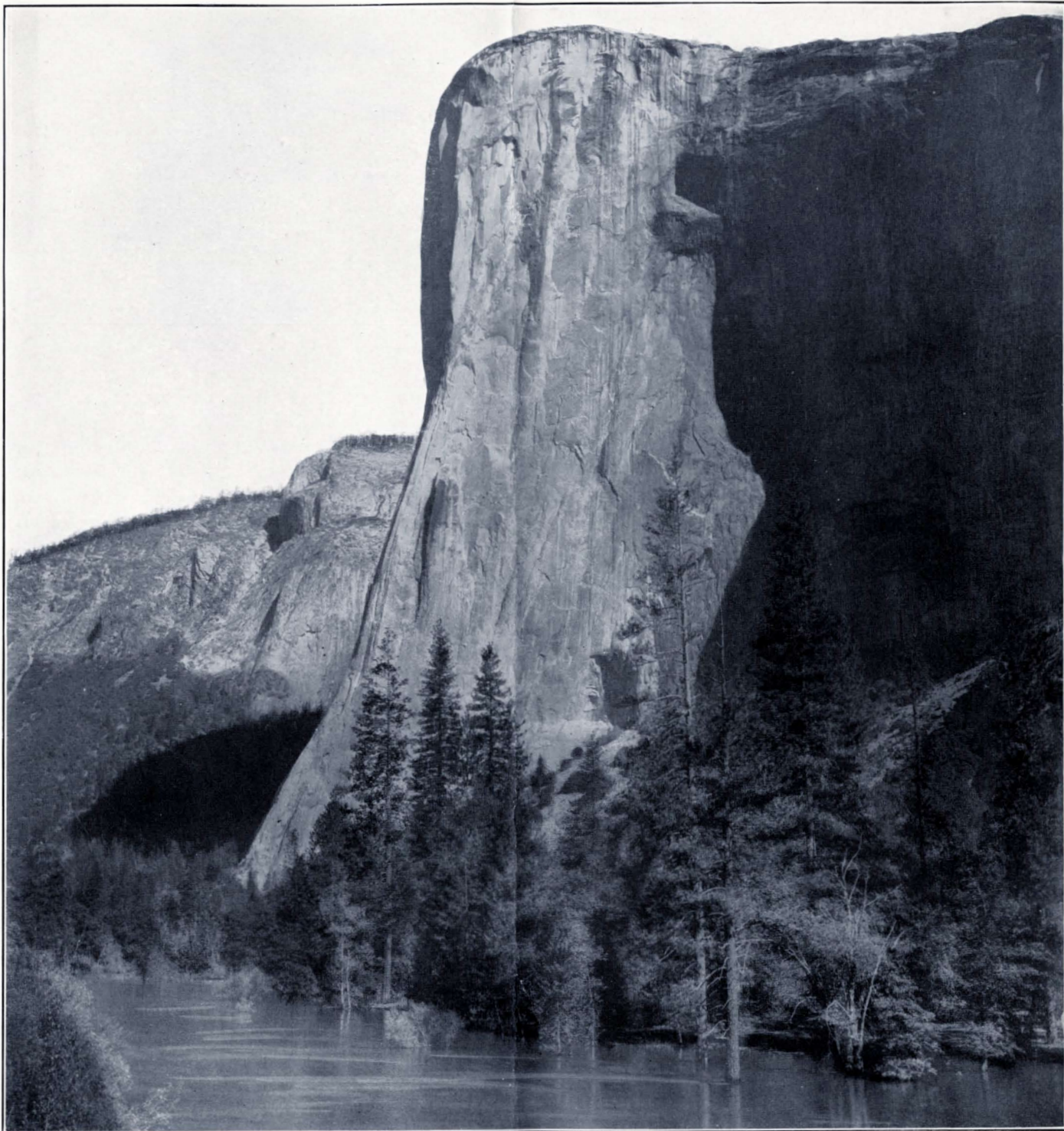
Nearby are polo fields, golf links, and tennis courts. There is deep-sea and pier fishing, yachting, and motor-boating. The bather may choose between surf or warm salt water plunge. Motoring to neighboring resorts and beaches, notably the enchanted caves and cliffs of La Jolla, is a favorite pastime.

La Jolla.—On the ocean shore, 14 miles north of San Diego, is located Casa de Manana, unique in its architecture and appointments, "where tomorrow's cares are forgotten."

Tijuana.—Fifteen miles south of San Diego and reached by San Diego & Arizona Railway is Tijuana, just across the Mexican border, famous for its horse races. During the winter season there are over 100 race-days under auspices of the Tijuana Jockey Club.

El Centro, in the Imperial Valley—likened to the Valley of the Nile—provides in its Barbara Worth Hotel, a well-appointed stopping place for those desiring a temperate winter climate. Auto roads lead through fertile fields and over fascinating desert stretches to mountain surroundings.

The Short Line to San Diego.—The line of the San Diego & Arizona Railway through the scenic Carriso Gorge, connects with Southern Pacific Lines at El Centro, and in conjunction with the "Sunset Route" from New Orleans, or the "Golden State Route" from Chicago, forms the shortest line to San Diego.



IN YOSEMITE NATIONAL PARK—EL CAPITAN, MAJESTIC GUARDIAN OF YOSEMITE



GRIZZLY GIANT, ESTIMATED BY JOHN MUIR AS BEING UPWARDS OF FOUR THOUSAND YEARS OLD, LARGEST TREE IN MARIPOSA GROVE



ON HORSE TRAIL TO GLACIER POINT

The San Joaquin Valley

Entrance to California's National Parks in the High Sierra

Between San Francisco and Los Angeles the Southern Pacific "San Joaquin Valley Line" reaches the progressive and pleasant valley cities of Stockton, Modesto, Turlock, Merced, Madera, Fresno, Dinuba, Exeter, Visalia, Lindsay, Porterville, Hanford, Tulare and Bakersfield, passing through vineyards and orchards, wheat and alfalfa farms, orange groves and oil fields and to the south crossing the Tehachapi Pass by its noted "Loop." Some of these cities are gateways to the Yosemite, Sequoia and General Grant National Parks, and a brief description of the parks and how to reach them is here given.

Yosemite National Park Yosemite, with its mighty peaks and waterfalls, and the earth's oldest and tallest trees, ranks high among world's wonders. The Yosemite National Park covers an area 36 by 48 miles, yet many of its most spectacular sights generally viewed by visitors are grouped together in a remarkably small area—the Yosemite Valley—a gorge only seven miles long and from one-half to one mile wide. The floor of this valley is verdure-clad, and in spring and summer is dotted with bright blooms, the Merced River flowing through its meadowlands and park-like forests. This deep-cleft mountain valley, 4,000 feet above the sea, is walled in by towering granite cliffs. It is a realm of precipices, stately spires and domes, and magnificent waterfalls. El Capitan, which stands guard at the entrance to Yosemite, rises 3,604 feet, displaying on its face 400 acres of granite; Sentinel Rock is 3,100 feet high; Glacier Point, 3,245 feet; and the Half Dome, 4,892 feet. Cathedral Spires, Three Brothers, Cloud's Rest, Liberty Cap, and Royal Arches are some of the additional rock features that make Yosemite vistas so strikingly picturesque. Of its waterfalls Yosemite Falls



ON THE TIOGA ROAD

plunge 2,600 feet. The upper reach is 1,600 feet, then a series of cascades 600 feet, and a final drop of 400 feet. Vernal, Nevada, and Illilouette Falls are each different from the other. Ribbon Falls is a glistening thread of 1,612 feet, while Bridal Veil drops 940 feet. Mirror Lake with its many reflections, including that of the rising sun, is remarkable.

Yosemite is reached from San Francisco and Los Angeles via Southern Pacific to Merced, there connecting with Yosemite Valley R. R. to El Portal, thence by auto stages 15 miles to Yosemite Village. During the summer Yosemite Valley is also reached from Merced by auto-stages via Miami and Wawona.

The Sentinel Hotel in Yosemite Valley is open throughout the winter and the following hotels and camps are open during the summer season: Yosemite Lodge, Glacier Point Mountain House, Camp Curry; Tuolumne Meadows, and Hetch Hetchy Lodges; Big Trees Lodge; also the Wawona Hotel, with golf course, near southern entrance to the Park.

Hetch Hetchy Valley.—An interesting one-day trip from Yosemite Valley is by auto-stage to Hetch Hetchy Lodge at Mather, thence by motor train to site of the Hetch Hetchy Dam, which impounds the waters of the Tuolumne River. The region is one of magnificent scenery.

Mariposa Big Tree Grove.—The Mariposa Big Trees (*Sequoia gigantea*) lie within the southern boundary of Yosemite National Park, open only in the summer and autumn months. The Mark Twain, the tallest tree, is 331 feet high, and the largest (such as the Grizzly Giant and the Washington) are over 29 feet in diameter at base. The Wawona tree, 26 feet in diameter, is tunneled and the auto road passes through its trunk. The age of these trees is estimated at over 3,000 years.

Within the Park are also the smaller Tuolumne and Merced groves of Sequoias.

Yosemite-Lake Tahoe Tioga Pass Auto Tour.—Southern Pacific passengers from and to the East by the "American Canyon Route" via Ogden and Truckee, can, under through ticketing arrangements during the



THE BEAUTIFUL YOSEMITE FALLS IN
YOSEMITE NATIONAL PARK



LOOKING WEST FROM KEARSARGE PASS, IN CALIFORNIA'S HIGH SIERRA

season July 15 to September 17, visit both Yosemite and the Lake Tahoe country by the 2-day 250-mile auto trip over the scenic Tioga Pass Road, detouring through Merced on Southern Pacific "San Joaquin Valley Line" and Truckee, in either direction.

The Sequoia and General Grant National Parks

(Open in Summer and Autumn, May 24th to Oct. 10th)

South of the Kings River Canyon and west of the Canyon of the Kern, in the High Sierra, is a great timbered region embraced in the Sequoia National Park, containing the most extensive big tree groves in the world. Just beyond the northwest boundary is the California Grove on Redwood Mountain, and directly north is the General Grant National Park, containing a smaller grove of trees, among them the General Grant, the second largest known tree.

The proposed Roosevelt-Sequoia National Park would include not only the Sequoia Park, but also the Kings River Canyon, the Canyon of the Kern, and the High Sierra which lie to the eastward, culminating in Mount Whitney, 14,501 feet, highest mountain in the United States excepting Mount McKinley and other peaks in Alaska. This park, embracing as it would a range of country varying in altitude from 1,000 to 14,000 feet, includes scenery unsurpassed in any mountain region. In the Sequoia Park and surrounding forests there have been recorded over a million of California's sequoias, some of them the largest in the world, notably the sequoia known as the General Sherman, 36.5 feet in diameter at its base and 279.9 feet high. The General Grant Tree, in the General Grant National Park, is 35 feet in diameter and 264 feet high.

Sequoia National Park, in addition to its big tree

groves, is notable for its great wooded canyons, some of them 4,000 feet deep. The views from Morro Rock across Kaweah Canyon toward Castle Rocks, rising more than 5,000 feet above the valley floor, and from the summits of Alta Peak, Mount Silliman, and Vanderver Mountain, the latter 11,900 feet, are truly magnificent. Twin Lakes present a beautiful sight, while Crystal Cave, discovered in 1918 and not yet fully developed, and other caves are added attractions.

There are comfortable accommodations in the two parks—Giant Forest Lodge in the Sequoia Park, and a camp of modern tent-houses with hotel service in the General Grant Park.

From Giant Forest Lodge saddle-animal and pack trains, with guides, leave during the season by way of J. O. Pass and Horse Corral Meadow for Kings River Canyon Camp, in an excellent region for fishing and hunting—a 2-day trip of about 35 miles.

Sequoia National Park is reached via Southern Pacific Lines to Visalia or Exeter, thence by auto-stage to Giant Forest, during summer and autumn seasons.

General Grant Park is reached via Southern Pacific Lines to Fresno or Sanger, thence auto-stage to General Grant Camp, 61 and 45 miles respectively.

Huntington Lake Country.—In the High Sierra north of the Kings River is Huntington Lake. Trout fishing and hunting are of the best and at Huntington Lake Lodge near the shores of the lake will be found every convenience and facilities for recreation and enjoyment with excellent service. It is reached by Southern Pacific "San Joaquin Valley Line" via Fresno to El Prado, thence over San Joaquin & Eastern Ry. to Cascada and four miles by auto.



CATALINA ISLAND

GOLF IN CALIFORNIA

The mild climate of California enables golf to be played at almost any time regardless of the month of the year. There are many country clubs with well-kept grounds, the principal tourists' hotels usually maintain their own and in addition there are several excellent public courses. A list of the principal courses is given below:

Anaheim	Fairway Golf Club	Los Angeles	Midwick Country Club (Ramona Acres)	Redlands	Redlands Country Club
Arbuckle	Arbuckle Golf Club	"	Brentwood Country Club (Santa Monica)	Redwood City	Menlo Country Club
Avalon	Santa Catalina Island Golf Club	"	Hillcrest Country Club	Reedley	Reedley Country Club
Bakersfield	Stockdale Golf and Country Club	"	Sunset Canyon Country Club	Riverside	Victoria Club
"	Kern River Golf Club	"	Rancho Country Club	Sacramento	Del Paso Country Club
Belmont	Belmont Country Club	"	Wilshire Country Club	"	Sacramento Golf Course (Municipal)
Belvedere	Belvedere Golf Club	"	Baldwin Lake Country Club	Salinas	Salinas Golf Club
Berkeley	Berkeley Country Club	"	Bellview Country Club	San Bernardino	San Bernardino Country Club
Biola	Biola Golf Club	"	California Country Club	San Diego	Point Loma Golf Club
Blairsden	Feather River Inn Golf Club	"	El Cabellero Country Club	"	San Diego Country Club
Brawley	Brawley Golf Club	"	Encino Country Club	San Francisco	S. F. Golf and Country Club (Ingleside)
Brea	Unoco Golf Club	"	Hollywood Country Club	"	California Golf Club (Ingleside)
Burbank	Sunset Canyon Country Club	"	Los Serranos Country Club	"	Presidio Golf Club (Presidio Terrace)
Burlingame	Burlingame Country Club	"	Palos Verdes Estates Golf Club	"	Lincoln Park Golf Club (Municipal Links)
Byron	Byron Hot Springs	"	Potrero Country Club	"	Lakeside Country Club
Chico	Chico Golf Club	"	Lakeside Country Club	"	Lake Merced Golf and Country Club
Claremont	Indian Hill Golf Club	"	Sepulveda Golf and Country Club	"	Harding Memorial Golf Course
Coalinga	Coalinga Golf Club	Mare Island	Mare Island Golf Club	"	Pacific Union Club
Colusa	Colusa Golf Club	Martinez	Contra Costa Country Club	"	Olympic Golf and Country Club
Corning	Corning Golf Club	Marysville	Marysville Country Club	San Gabriel	San Gabriel Valley Country Club
Coronado	Coronado Country Club	Menlo Park	Menlo Park Golf Club	San Jose	San Jose Country Club
"	Rockwell Field Golf Club	"	Atherton Golf Club (Atherton)	San Luis Obispo	San Luis Obispo Golf Club
"	North Island Country Club	Mill Valley	Mill Valley Golf and Country Club	San Mateo	Beresford Country Club
Culver City	California Country Club	Modesto	Stanislaus Country Club	"	Crystal Spring Country Club
Del Mar	Stratford Inn Golf Course	Monrovia	Norumbega Town and Country Club	San Pedro	San Pedro Golf and Country Club
Del Monte	Del Monte Golf and Country Club	Mt. Hamilton	Mount Hamilton Golf Club	San Rafael	Marin Golf and Country Club
"	Del Monte Lodge Course (Carmel Bay)	Mountain View	Mountain View Country Club	Santa Ana	Orange County Country Club
Diablo	Mount Diablo Park Club	Napa	Napa Golf and Country Club	"	Santa Ana Country Club
Elsinore	Mt. Elsinore Country Club	Oakland	Claremont Country Club	Santa Barbara	La Cumbre Golf and Country Club
El Centro	El Centro Golf Club	"	Sequoia Country Club	"	Santa Barbara Country Club (Montecito)
Escondido	Escondido Country Club	"	Lake Chabot Golf Club	"	Bankers California Country Club
Fort Baker	Fort Baker Golf Club	Oceanside	Oakland Municipal Links	Santa Cruz	Santa Cruz Golf and Country Club
Fresno	Riverside Golf Club	Ojai	Oceanside Country Club	Santa Maria	Santa Maria Country Club
"	Sunnyside Country Club	Orcutt	Ojai Country Club	Santa Rosa	Santa Rosa Country Club
"	Fort Washington Golf Club	Oroville	Mt. Solomon Golf Club	Saticoy	Ventura Country Club
Gilroy	Gilroy Golf and Country Club	Pasadena	Oroville Country Club	Selma	Selma Golf Club
Glendale	Oakmont Country Club	"	Pasadena Golf Club	Sonoma	Valley of the Moon Country Club
Gonzales	Gonzales Golf Club	"	Altadena Country Club	Stockton	Stockton Golf and Country Club
Healdsburg	Healdsburg Golf Club	"	Annandale Country Club	Strathmore	Tulare Country Club
Hemet	Tahquitz Country Club	"	Flintbridge Country Club	Taft	Petroleum Club
Huntington Pk.	Rio Hondo Golf Club	"	Raymond Hotel Golf Course	Turlock	Turlock Country Club
Kingsburg	Kingsburg Golf Club	"	Pasadena Athletic and Country Club	Ukiah	Burklea Golf Club
La Jolla	La Jolla Country Club	Paso Robles	Paso Robles Golf Club	Upland	Red Hill Country Club
Lake Tahoe	Tahoe Tavern Golf Club	Patterson	West Side Golf Club	Vallejo	Vallejo Golf and Country Club
Lindsay	Tulare Country Club	Petaluma	Petaluma Golf and Country Club	Visalia	Visalia Golf Club
Long Beach	Virginia Country Club	Pine Knot	Big Bear Lake Golf and Country Club	Watsonville	Pajaro Valley Country Club
"	Long Beach Municipal Links	Pittsburg	Pacheco Golf Club	Wawona	Wawona Golf Club
Longview	Longview Golf and Country Club	Pomona	Mountain Meadows Country Club	Willows	Willows Golf Club
Los Altos	Mt. Los Altos Golf and Country Club	Porterville	Monache Golf and Country Club	Woodland	Yolo Fliers Club
Los Angeles	Los Angeles Country Club (Beverly Hills)	Red Bluff	Red Bluff Golf Club	Whittier	Hacienda Country Club
"	Griffith Park Golf Club (Municipal Links)	Redding	Redding Golf Club		

For Information Regarding Passenger Fares, Time Schedules, Pullman Reservations, or Freight Rates and Freight Service, etc., Address the Following:

Atlanta, Ga., 319-320 Healy Bldg.	D. Asbury, General Agent
Austin, Texas, 703 Congress Avenue	W. R. Smith, District Freight and Passenger Agent
Baltimore, Md., 206-7-8 Union Trust Bldg.	W. B. Johnson, General Agent
Birmingham, Ala., 406 Woodward Bldg.	S. J. Brown, General Agent
Boston, Mass., 209 Old South Bldg., 294 Washington Street	E. S. Leavitt, General Agent
Buffalo, N. Y., Ellicott Square Bldg.	G. H. Vogel, General Agent
Chicago, Ill., Southern Pacific Bldg., 35-37 West Jackson Boulevard	C. T. Collett, General Agent
Cincinnati, Ohio, Wiggins Bldg., corner Vine and Fifth Streets	Robert McDowell, General Agent
Cleveland, Ohio, 415 Hippodrome Bldg., Euclid Avenue	Edmund G. Cook, General Agent
Denver, Colo., 303-304 Boston Bldg.	E. H. Williams, General Agent
Detroit, Mich., 217 Majestic Bldg.	W. W. Hale, General Agent
El Centro, Calif., Main Street and Railroad Avenue	C. W. Runge, District Freight and Passenger Agent
El Paso, Texas, 206 North Oregon Street	J. E. Monroe, Division Passenger Agent
El Paso, Texas, corner North Stanton and East Franklin Streets	Richard Warren, District Freight and Passenger Agent
Eugene, Ore., 616 Willamette Street	L. L. Graham, District Freight and Passenger Agent
Fort Worth, Texas, 411 Waggoner Bldg.	C. S. Elliot, Division Freight and Passenger Agent
Fresno, Calif., Passenger Station	H. E. Ish, District Freight and Passenger Agent
Galveston, Texas, 2024 Market Street	W. J. Carter, Division Freight and Passenger Agent
Houston, Texas, Southern Pacific Bldg.	T. J. Anderson, General Agent, Passenger Department
Houston, Texas, Southern Pacific Bldg.	T. G. Ratcliff, General Agent, Freight Department
Houston, Texas, Rice Hotel Annex	E. J. Peters, Division Passenger Agent
Indianapolis, Ind., Merchants Bank Bldg.	Lyon Liston, General Agent
Kansas City, Mo., Railway Exchange Bldg.	F. W. Sedgwick, General Agent
Klamath Falls, Ore., 715 Main Street	J. J. Miller, District Freight and Passenger Agent
Long Beach, Calif., 156 West Ocean Avenue	L. Overman, District Passenger Agent
Long Beach, Calif., 156 West Ocean Avenue	Robert S. Fisher, District Freight Agent
Los Angeles, Calif., Pacific Electric Bldg.	H. P. Monahan, District Passenger Agent
Los Angeles, Calif., Pacific Electric Bldg.	J. E. Light, District Freight Agent
Medford, Ore., 204 National Bank Bldg.	A. S. Rosenbaum, District Freight and Passenger Agent
Memphis, Tenn., Exchange Bldg.	L. C. Bouchard, General Agent
Merced, Calif., 18th and M Streets	I. T. Sparks, District Freight and Passenger Agent
New Orleans, La., Pan-American Bank Bldg.	R. L. Slinger, Division Passenger Agent
New York, N. Y., 165 Broadway	A. J. Poston, General Agent, Passenger Department
New York, N. Y., 165 Broadway	S. C. Chiles, General Agent, Freight Department
Oakland, Calif., 13th Street and Broadway	I. L. Kelly, District Freight and Passenger Agent
Ogden, Utah, 525 Eccles Building	D. R. Owen, Traveling Agent
Oklahoma City, Okla., 909 Colcord Building	J. A. Eads, General Agent
Pasadena, Calif., 148 East Colorado Street	G. W. Wetherby, District Passenger Agent
Philadelphia, Pa., 1602 Chestnut Street	F. T. Brooks, General Agent
Phoenix, Ariz., 107 North Central Avenue	R. P. Kyle, District Freight and Passenger Agent
Pittsburgh, Pa., Park Building	G. G. Herring, General Agent
Portland, Ore., Fourth and Stark Streets	J. A. Hopgood, City Ticket Agent
Portland, Ore., Yeon Building	L. A. Brockwell, District Freight Agent
Reno, Nev., 108 East Second Street	J. H. McClure, District Freight and Passenger Agent
Riverside, Calif., 1150 Market Street	J. R. Downs, District Freight and Passenger Agent
Sacramento, Calif., 1115 Ninth Street	C. E. Spear, District Freight and Passenger Agent
Salem, Ore., 148 North Liberty Street	A. A. Mickel, District Freight and Passenger Agent
Salt Lake City, Utah, 41 South Main Street	Press Bancroft, General Agent
San Antonio, Tex., 613 Navarro Street	Tom Hood, Division Passenger Agent
San Antonio, Tex., 601 Gunter Building	H. A. Loeffler, Division Freight Agent
San Diego, Calif., 677 Spreckels Building	A. D. Hagaman, District Freight and Passenger Agent
San Francisco, Calif., 65 Geary Street	J. N. Harrison, District Passenger Agent
San Francisco, Calif., 77 Market Street	B. D. Myers, District Freight Agent
San Pedro, Calif., 226 West Fifth Street	H. A. Hansen, District Freight Agent
San Pedro, Calif., 22 East Fifth Street	H. M. Read, Freight and Passenger Agent
Santa Ana, Calif., East First and Breedon Streets	L. B. Valla, District Freight and Passenger Agent
Santa Barbara, Calif., 937 State Street	G. C. Drake, District Freight and Passenger Agent
Santa Rosa, Calif., 201 Rosenberg Building	R. B. Houston, District Freight and Passenger Agent
San Jose, Calif., First and San Fernando Streets	E. Shillingsburg, District Freight and Passenger Agent
Seattle, Wash., 314 Union Street	B. C. Taylor, General Agent
Shreveport, La., 520 Market Street	M. J. Dooley, Division Freight and Passenger Agent
St. Louis, Mo., Southern Pacific Building, 312-314 North Sixth Street	L. B. Banks, General Agent
Stockton, Calif., Main and Joaquin Streets	S. C. Beane, District Freight and Passenger Agent
Tonopah, Nev., Mizpah Hotel	E. L. Turnbaugh, Traveling Agent
Waco, Tex., 112 South Sixth Street	W. Cunningham, Division Freight and Passenger Agent

Industrial Agents:

W. F. Miller, General Freight Agent, Portland, Ore.; J. I. McGregor, Agricultural Agent, Houston, Tex.; H. C. Fondren, Agricultural and Colonization Agent, Lake Charles, La.; P. L. Bell, Industrial and Colonization Agent, Guaymas, Mex.; A. K. Frye, 65 Market St., San Francisco, Calif.; C. R. Smurr, Pacific Electric Building, Los Angeles, Calif.

FOREIGN AGENCIES

Genoa (4), Italy, via Roma 8a	Brizzolesi, Kemsley & Millbourn, General Agents
Milan, Italy, via Monte Napoleone	
Turin, Italy, Corso Bramante, 6	G. Ruhr, General Agent
Hamburg, Germany, 18 Glockengiesserwall	F. M. Giralt, General Agent
Havana, Cuba, 409-410 Castelerio Bldg.	
Liverpool, England, 21 Water Street	R. G. Bonsor, General Agent for Great Britain
London, England, 49 Leadenhall Street	Geo. F. Jackson, General Agent
Mexico City, Mex., Avenida Cinco de Mayo, No. 32	Alfonso Marquez, Traveling Agent
Monterrey, Mex., Langstroth Bldg., Escobedo and Padre Mier Streets	H. Desmidt, General Agent
Paris, France, 3 Rue Tronchet	

W. C. McCormick
General Passenger Agent
Houston, Tex.

J. T. Monroe
General Passenger Agent
New Orleans, La.

John M. Scott
Asst. Pass. Traffic Manager
Portland, Ore.

Wm. Simmons
Traffic Manager
Sou. Pac. Atlantic S. S. Lines
New York, N. Y.

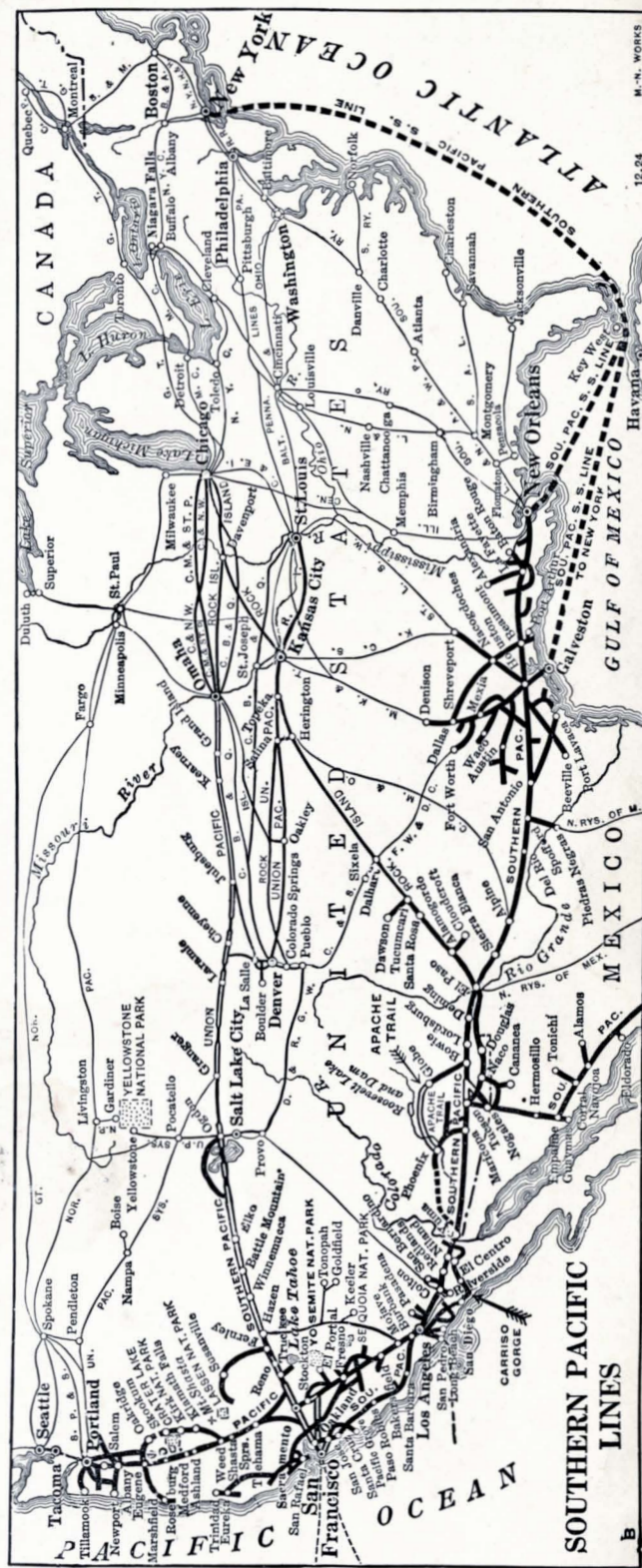
J. H. R. Parsons, Passenger Traffic Manager, San Francisco, Calif.

F. S. McGinnis
Asst. Pass. Traffic Manager
Los Angeles, Calif.

H. Lawton
Traffic Manager
Sou. Pac. R. R. of Mex.
Guaymas, Mex.

C. L. McFaul
Asst. Pass. Traffic Manager
San Francisco, Calif.

Eugene Fox
Traffic Manager,
El Paso, Tex.



California for the Tourist



Southern
Pacific
Lines

California for the Tourist



Southern
Pacific
Lines