

## Golden State Route

"Golden State Limited" and "The Californian" from Chicago and St. Louis through Kansas City and El Paso, thence through New Mexico, Arizona and southern California to Los Angeles. There is a through Pullman from Chicago to San Diego, via El Centro and the San Diego & Arizona Railway through the scenic "Carriso Gorge"—the shortest line from Chicago to San Diego.

## Southern Pacific Safety

By the expenditure of millions the Southern Pacific has been made the safest railroad in the United States. There are 3,415 miles of Southern Pacific road protected by Automatic Electric Block Signals.

## Tickets by Different Route Returning

You may purchase tickets over eastern roads, via any one of Southern Pacific's four routes going, and by another of them returning, in connection also with a different eastern line, thus making two distinct transcontinental journeys. In this way you will "see the most for your money," and gain a wider and more varied knowledge of the United States.

# Sunset Route



THE big inducement for many to choose the "Sunset Route" is the steamer trip from New York to New Orleans. The Southern Pacific operates the ocean steamships "Creole," "Comus" and "Momus" down the Atlantic Coast and through the pleasant waters of the Gulf Stream. These vessels possess every comfort

of furnishing, and both cuisine and service are of highest class. The through fare is the same as all-rail, but includes berth and meals on steamers.

The traveler from the East who does not choose the sea route reaches New Orleans by one of several connecting rail lines through attractive and historic territory.

New Orleans is one of the most romantic of American cities, for the influence of the ancient French occupation and the fascination of the Old South still remain. It is the southern metropolis and the water gateway to the greatest agricultural region in the world. Though a hundred miles from the ocean, New Orleans is a great port, thanks to the broad, deep waters of the Mississippi.

The old French quarter, the cathedral, the restaurants, fine old southern homes, parks and drives, historic battlegrounds, Jackson Square, Lake Pontchartrain, Tulane University—all these attract the tourist.

Out from New Orleans speeds the "Sunset Limited," past cotton and rice fields and sugar plantations: over lazy bayous: across mighty rivers flowing to the Gulf: beside mysterious cypress swamps where the ancient trees are draped in waving moss. Here, too, is a country of quiet pastoral charm, the "Land of Evangeline," where dwelt the heroine of Longfellow's idyll.

Entirely across the vast State of Texas leads our line of travel, through fruitful acres and past splendid cities which have sprung up where once cattle grazed. Houston, the commercial metropolis, with its modern hotels and tall buildings, bespeaks the spirit and energy of this growing country. One may leave the main line at Houston and run down fifty miles to the busy port of Galveston, with fine hotels and its great sea-wall facing the Gulf. San Antonio is another Texas city on the main line which has much to show. It is a noted winter resort, with hotel accommodations of the highest class: and here is the Alamo, hallowed spot in American history.

Following the course of the Rio Grande for many miles, the train reaches El Paso, Texas, a thriving and modern city with good accommodations for the tourist.

Crossing the Rio Grande, the route continues westward by way of Deming, Lordsburg and Bowie through a colorful land of much charm. Mesas and buttes outlined against the sky, sharp-pointed peaks, forests of cactus, the mystic mirage hovering over the plains—such are the elements that mingle in the singular beauty of this, our southern frontier. The ranges are dotted with cattle, and in the fertile valleys hundreds of thousands of acres have been reclaimed by regulated irrigation.

To know the marvelous Southwest in its every phase the tourist should make the APACHE TRAIL OF ARIZONA "All-motor mountain trip" Detour from Bowie, via Globe, Roosevelt Dam and Phoenix to Maricopa. For details, train service and auto connection, see page 11.

The main line of "Sunset Route" west of Bowie continues to Tucson. During the winter season, November to April, Tucson approaches perfection in mildness of climate as nearly as our country affords. Outdoor life is delightful. The thriving city is situated in the irrigated and fertile valley of the Santa Cruz amid desert surroundings, but it is a picture desert tinted with the brilliant bloom of the little desert flowers that flash like exotics over miles of undulating country clothed with sage, and musk and other shrubs, and marked by tall cacti grotesque and multiform in shape. Trips may be taken to Mission San Xavier del Bac, Mission San Jose de Tumacaccri and to Nogales. Beyond Tucson the journey is resumed, though the tourist may choose to make the short side trip from Casa Grande station to the ancient Casa Grande Ruin (sixteen miles by auto stage): or the railroad journey of thirty-five miles over the Arizona Eastern from Maricopa to Phoenix,

capital of Arizona and center of the rich Salt River Valley.

At Yuma the railroad enters California, crossing the broad Colorado River, whose waters irrigate the land round about and have converted the Imperial Valley into one of the world's most fruitful regions. This garden-spot lies just south of the main line and is reached through Niland.

Just west of Yuma a Southern Pacific line runs southwest through Mexicali and Calexico, in the Imperial Valley, connecting at El Centro with the San Diego & Arizona R. R., through the scenic Carriso Gorge to San Diego. An attractive and progressive city and seaport, San Diego is renowned for its mild and equable climate, making it a most desirable winter and summer seaside resort. The U. S. Grant Hotel and the Hotel San Diego provide excellent service, and across the Bay amid tropical verdure is the famous Hotel Del Coronado.

From Niland west the "Sunset Route" skirts the southern slope of the Chocolate Mountains, along the Salton Sea and traversing the farms and date plantations of the Coachella Valley. At Palm Springs and Whitewater it passes close to snow-clad Mt. San Jacinto—whose entire 10,805 feet of elevation is visible from base to summit. Climbing San Gorgonio Pass in sight of Mounts San Bernardino, San Gorgonio and San Antonio it passes amidst the orange, olive and palm groves of the San Gabriel Valley to Los Angeles.

Los Angeles is delightfully situated, extending from the Pacific Ocean to the foothills of the Sierra Madre. A great and beautiful city, Los Angeles is famed as the tourist center of southern California. The attractive surrounding region, later described, can be most conveniently visited by the Pacific Electric Railway, excursion cars running frequently.

From Los Angeles to San Francisco there is a choice of routes north—over the "Coast Line" or via the "San Joaquin Valley Line"—each later described.



S. S. "Momus"

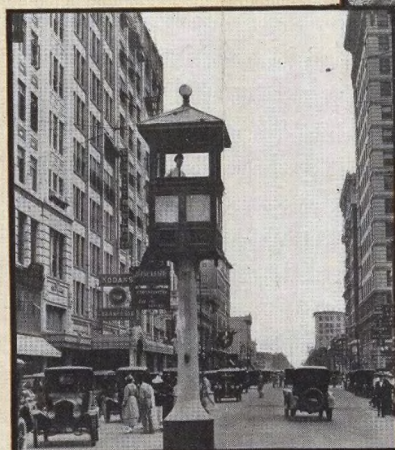


Lee Circle, New Orleans, Louisiana

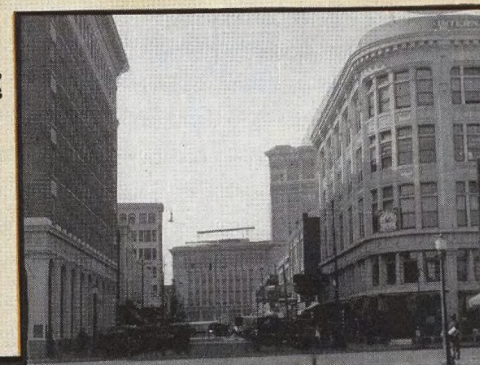


Castle Canyon, Texas

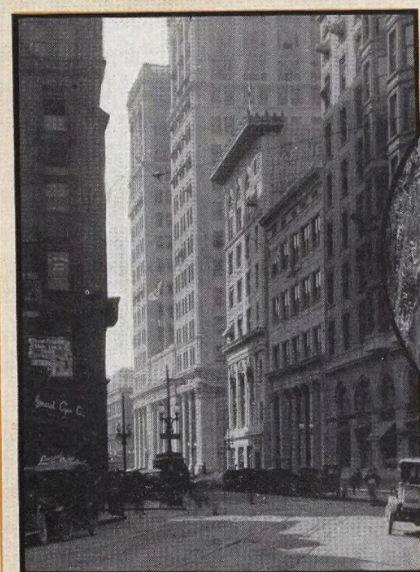
# Sunset



Houston, Texas



El Paso, Texas



Carondelet Street, New Orleans



A Louisiana Bayou



Mission San Xavier del Bac, Tucson, Arizona



Galveston, Texas



"The Alamo," San Antonio, Texas

## The Coast Line

The "Coast Line" of the Southern Pacific from Los Angeles to San Francisco follows the route of El Camino Real, the "Highway of the King," along which stand today fifteen old Franciscan missions. The old missions of San Buenaventura, Santa Barbara, San Miguel and Santa Clara may be seen from the car windows. From Los Angeles the way is through Ventura to Santa Barbara, famed for its genial climate, beautiful homes, well-

preserved mission and tourist hotels — the Arlington, the Samarkand, El Mirasol and El Encanto. Beyond Santa Barbara the railroad skirts the coast for over one hundred miles, high above the foaming breakers, rounds Point Concepcion, and passing picturesque San Luis Obispo, scales the Santa Lucia Mountains through Cuesta Pass. Descending into the Salinas Valley we proceed through Santa Margarita and, just beyond it, Atascadero amid its oaks and orchards.

Paso Robles Hot Springs, with excellent hotel, modern baths and facilities for treatment, golf links and delightful drives, is attractive and restful. The waters match in medicinal properties those of European spas. Beyond Paso Robles the railroad continues down the Salinas Valley. Short detours may be made to Monterey, Del Monte, Pacific Grove, Carmel-by-the-Sea, Santa Cruz and Capitola, later described. Proceeding along the main line, the beautiful Santa Clara Valley

is traversed, through San Jose, "the Garden City," with Lick Observatory on Mount Hamilton in sight to the east. North of Palo Alto, seat of Stanford University, the route extends up the Peninsula, past Menlo Park, Atherton, Redwood City, San Carlos, San Mateo, Burlingame and other charming suburban towns, for several miles skirting the shores of the Bay and reaching Third Street Station, Southern Pacific's "Coast Line" terminus at San Francisco.

# Route



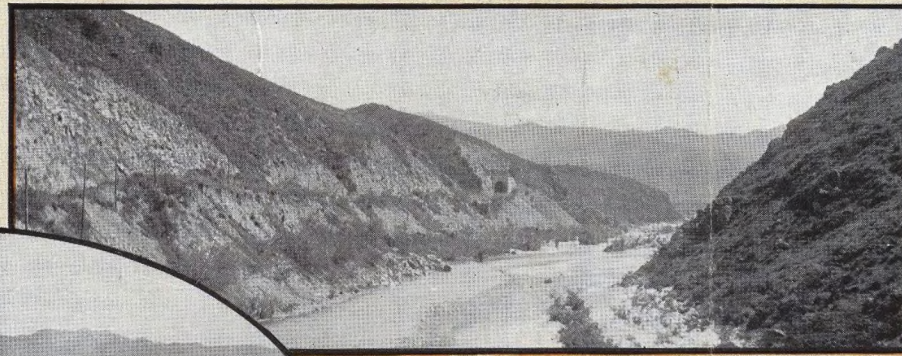
A Giant Sahuara—Arizona



California Orange Groves



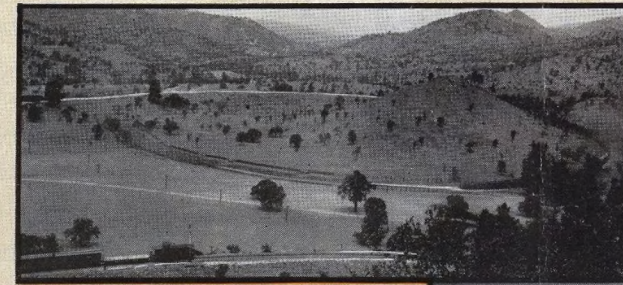
Casa Grande Ruins



Carriso Gorge, California



Los Angeles, California



The Great Tehachapi Loop



Mission San Gabriel



Mission Santa Barbara



Mission San Miguel

## The San Joaquin Valley Line

The "San Joaquin Valley Line" of the Southern Pacific (the inland route from Los Angeles) passes through Mojave and scales the Tehachapi Mountains by the picturesque Tehachapi Pass. Circling the celebrated Loop, the train descends into the San Joaquin Valley, a region of wonderful fertility, 250 miles long and 40 miles wide, held between the high ridges of the Sierra Nevada and the Coast Range. The way northward leads through

the great oil fields, vineyards and orchards, vast wheat and alfalfa farms and orange groves. Prosperous valley cities are passed—Bakersfield, Porterville, Lindsay, Exeter, Visalia, Fresno, Dinuba, Sanger, Madera, Merced, Turlock, Modesto, Stockton, Tracy, the line thence extending by way of Byron Hot Springs, Port Costa, Richmond and Berkeley to Oakland and Oakland Pier. From here the traveler is transported by ferry steamer across the bay to San Francisco.

A line on the western side of the valley offers an alternative route north of Fresno, running through Kerman, Los Banos and Newman to Tracy.

Side trips from the "San Joaquin Valley Line" are particularly attractive. By way of Merced the tourist reaches Yosemite National Park with its Mariposa Grove of Big Trees. Sequoia National Park, General Grant National Park, the scenic canyons of the Kings and Kern rivers in the High Sierra, also Hunt-

ington Lake with its mountain Lodge, and the romantic country of Bret Harte are all accessible from the main route. From Mojave a branch line runs north into the Owens River Valley, where the snow-clad Sierra rise like a wall to the west, 10,000 feet above the valley floor. Mount Whitney, 14,501 feet in elevation, loftiest mountain in the United States, with exception of Mount McKinley and other summits in Alaska, is in plain view. Trails lead to hundreds of lakes and trout streams.

# American Canyon Route

Tourists to California by the "American Canyon Route" via Ogden go by way of Chicago, St. Louis or Kansas City.

Southern Pacific through trains "San Francisco Overland Limited" and "Pacific Limited" from Chicago, use the Chicago & North Western and Chicago, Milwaukee & St. Paul tracks, respectively, to Omaha, thence via Union Pacific to Ogden and Southern Pacific to San Francisco.

By taking Southern Pacific through train "St. Louis Express" from St. Louis via Wabash R. R. and Union Pacific, the traveler will go by way of Kansas City, and Denver in the heart of the Rockies, thence to Ogden and over Southern Pacific rails to San Francisco.

Through passengers via Denver & Rio Grande Western Ry. will go by way of Salt Lake City, and those stopping there will be furnished free—on application to Southern Pacific agent at Denver or Salt Lake City—with ticket via Union Pacific between Salt Lake City and Ogden, provided through San Francisco Pullman over Union Pacific from Salt Lake City is used. In Salt Lake City's Sacred Square are the celebrated Mormon Temple, and the Tabernacle with its great organ, and the tourist will here enjoy sight-seeing of unfailing interest.

Ogden, Utah, the eastern terminus of Southern Pacific's "American Canyon Route," is an important commercial city attractively situated at the base of the rugged Wasatch Range. Yellowstone National Park is within a night's ride to the north.

On leaving Ogden for California we cross Great Salt Lake over the famous Cut-off—"going to sea by rail"—30 miles from shore to shore, a unique experience in a trans-continental journey. Entering Nevada the Southern Pacific follows the Trail of the Argonauts of '49 passing Montello and Cobre

and on through a region of great stock ranges—vast plains rimmed by serrated mountains—the valley of the Humboldt River, Palisade Canyon and thriving towns such as Wells, Elko, Carlin, Battle Mountain, Winnemucca, Golconda, Lovelock and Sparks.

Reno, metropolis of Nevada and seat of its University, is attractive and progressive. Side trips include the historic Comstock Lode and Virginia City: Carson City the capital of Nevada, the mining camps of Tonopah and Goldfield: Lassen National Park northwest of Susanville and Westwood: the Truckee-Carson Irrigation project and Owens River Valley.

Beyond Reno the ascent of the Sierra Nevada is begun, and California is entered while winding toward the summit, following for miles the beautiful Truckee River to Truckee, whence the Lake Tahoe Ry. extends fifteen miles south to Lake Tahoe, a noted summer resort amid pines and Sierra peaks. During the summer a delightful detour can be made via Lake Tahoe and the scenic Tioga Pass auto-road to Yosemite, with Southern Pacific connection at Merced to destination.

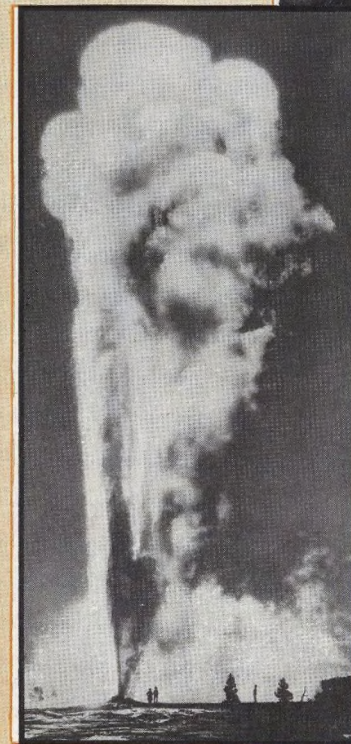
Just west of Truckee, on main line, lies historic Donner Lake, and crossing the summit the train for miles follows the rim of the American River Canyon 2,000 feet above the stream. Descending through the foothills California's scenery is unrolled in continual panorama. Between Dutch Flat and Gold Run are the goldfields of '49, immortalized by Bret Harte, then for miles orchards clothe the hillsides the route leading through Colfax, Auburn and Roseville to Sacramento, capital of California, an interesting city for a stop-over. From here the Sacramento River and its lower valley are crossed, and at Benicia the entire trains are carried by the largest ferries afloat, across the Straits of Carquinez to Port Costa. The eastern shore of San Francisco Bay is then followed for 30 miles to Oakland and Oakland Pier, passengers reaching San Francisco by Southern Pacific ferry steamers.



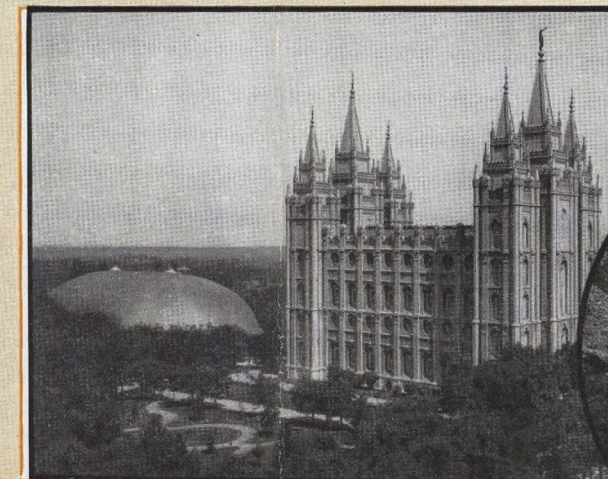
Chicago's Sky-line from Lake Michigan



Palisade Canyon, Nevada



"Old Faithful" Geyser,  
Yellowstone National Park



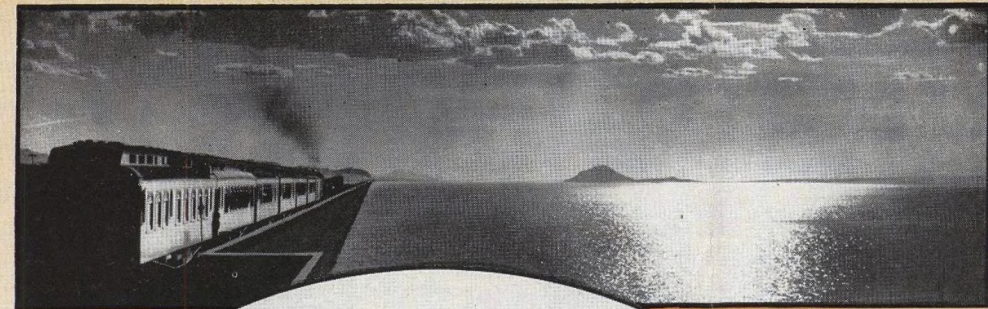
Temple and Tabernacle Salt Lake City, Utah



Ogden Canyon, Ogden, Utah

# American Canyon Route

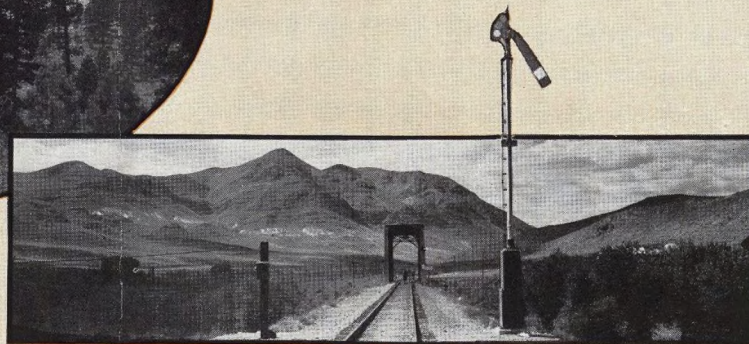
via Ogden



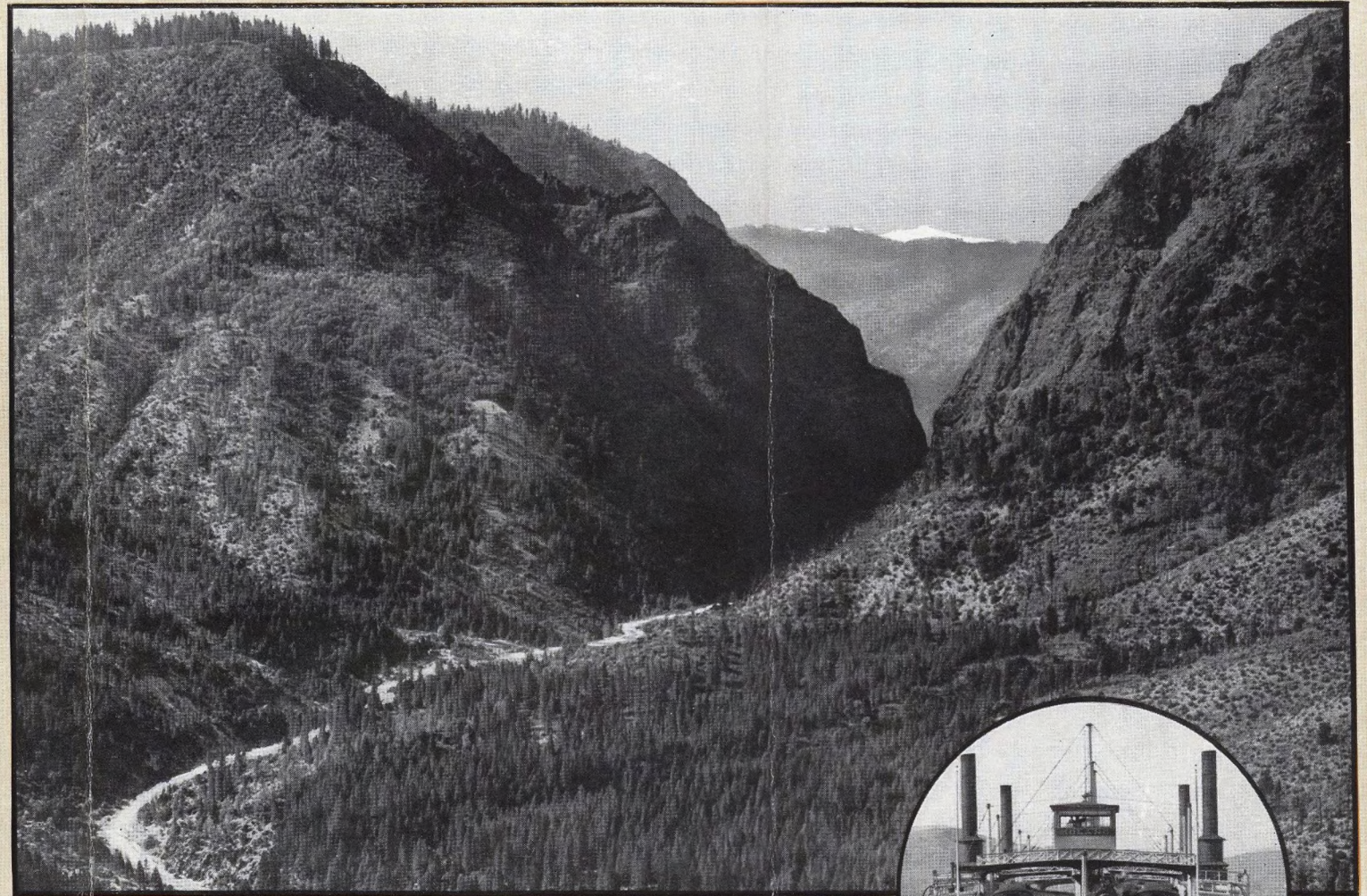
Great Salt Lake Cut-Off



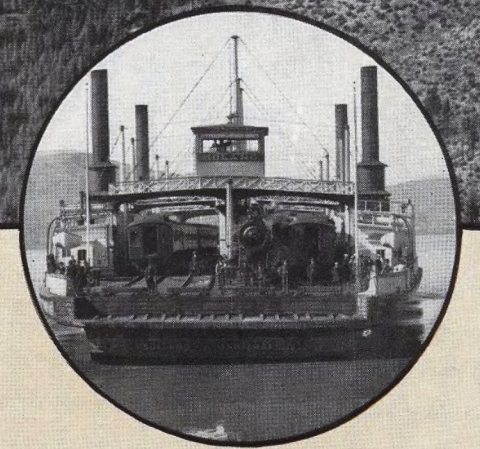
Donner Lake, California



Southern Pacific Track in Nevada



The American River Canyon, California



Giant Ferryboat "Solano"



Shore Line, Lake Tahoe



Humboldt Mountains in Nevada

# Shasta Route

Eastern travelers selecting the northern gateway approach California by the "Shasta Route," with opportunity to visit Seattle and Tacoma on Puget Sound: Victoria and Vancouver, B. C., and Portland, the Oregon metropolis with its numerous attractions and great scenic Columbia River Highway.

The "Shasta Route" is noted for its beautiful river views and its many mountain peaks—Mounts Baker, Rainier in Rainier National Park, St. Helens, Adams, Hood, Jefferson, Three Sisters, McLoughlin, Shasta and Lassen Peak in Lassen Volcanic National Park.

From Portland the line traverses the famous Willamette Valley, through historic Oregon City, Salem the capital, Albany, Eugene and across the divide into the Umpqua Valley, another prosperous agricultural section. Beyond Roseburg the picturesque Cow Creek and Wolf canyons lead into the Rogue River Valley with flourishing farms and orchards, through Grants Pass and Medford, the fruit shipping center of southern Oregon, to Ashland in the Siskiyou foothills, with its lithia and other mineral springs. Medford is northern entrance to Crater Lake National Park, Oregon, and southbound summer tourists can make a delightful detour from Medford by auto-stage to Crater Lake, thence following the shore of Upper Klamath Lake to Klamath Falls, returning to "Shasta Route" main line at Weed.

California is entered crossing the Siskiyou twenty miles south of Ashland. Nearing the summit the panoramas to the north are superb, notably that between Wall Creek and Siskiyou looking into the Rogue River Valley with the Cascade Range beyond. Descending the southern slopes the first sight is had of snow-clad Mount Shasta, 14,380 feet above sea level. The line winds for miles around the base of this majestic mountain, which appro-

priately gives its name to the "Shasta Route." A trail from Sisson reaches the summit.

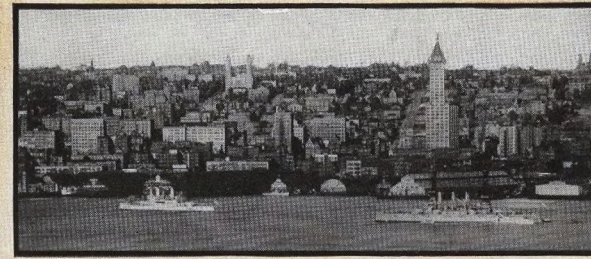
The Klamath Falls branch runs north from Weed, where Crater Lake tourists detour through Klamath Falls, returning to main line at Medford.

Circling the Cantara Loop the main line enters the picturesque Sacramento River Canyon, passing Shasta Springs, with beautiful Mossbrae Falls nearby, and other popular summer resorts later described. A few miles south Castle Crag towers to the west and gradually the canyon broadens into the Sacramento Valley with its fertile fields, orchards and oak-dotted pasture lands.

On the skyline 40 miles east of Redding and Red Bluff is seen Lassen Peak, 10,577 feet elevation, in Lassen Volcanic National Park. On May 30, 1914, this peak renewed its volcanic activity after a period of extinction believed to have been 200 years. At varying intervals it has since emitted volumes of smoke, with ashes and rock. Roads within the Park are under construction by the Government. The region is reached by auto-stages from Red Bluff and Chico to Chester, and 19 miles beyond by special auto to Drakesbad resort. The scenery is wild and beautiful and in addition to the crater includes the great Cinder Cone, Chaos Crags, several beautiful lakes and streams, the Devil's Kitchen, a boiling lake, mud caldrons and ice caves.

From Tehama south there is choice of routes through the Sacramento Valley, one line passing down the west side through Orland, Willows, Williams and Woodland, the other along the east side, through Chico, Marysville and Sacramento. Branch lines reach Sterling, Oroville, Yuba City and Colusa. The two lines unite at Davis, whence the way leads through Benicia, across Carquinez Straits to Port Costa by the largest train-ferry steamers afloat, following then for 30 miles the shores of San Francisco Bay to Oakland and Oakland Pier, there connecting with Southern Pacific ferry steamers to San Francisco.

# Shasta



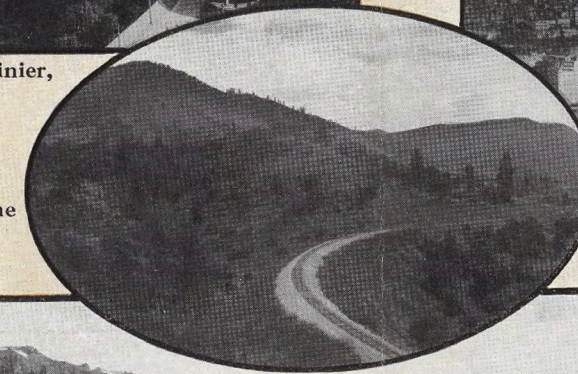
Seattle, Washington



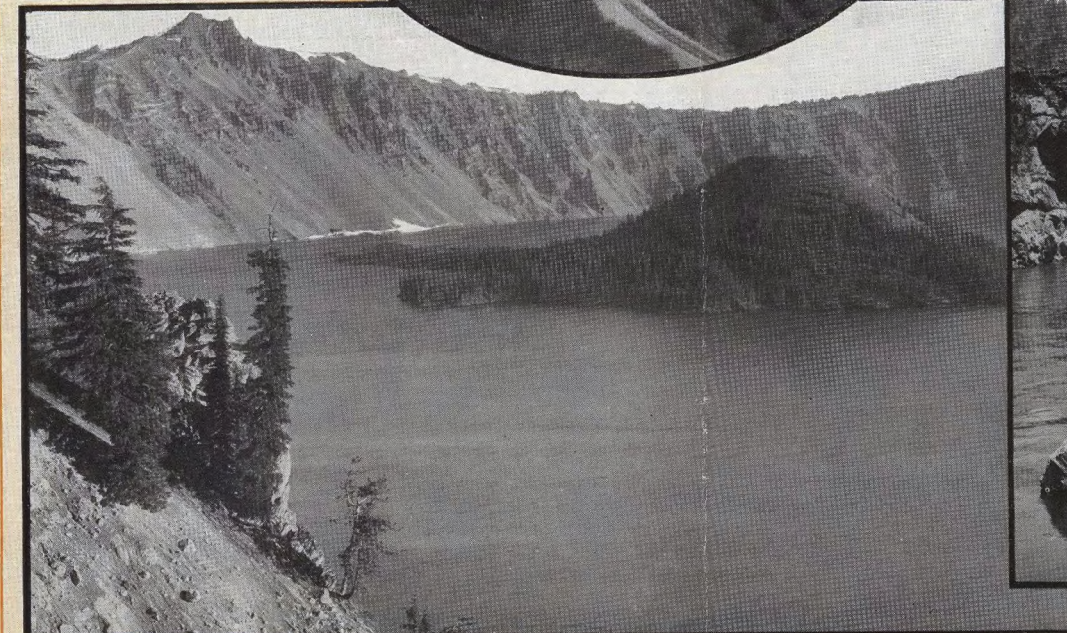
Tacoma and Mount Rainier, Washington



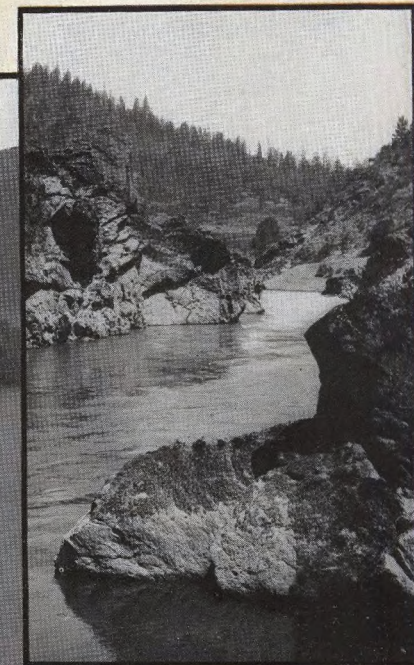
Portland and Mount Hood, Oregon



Crossing the Siskiyou



Crater Lake, in Crater Lake National Park, Oregon



Rogue River, Oregon

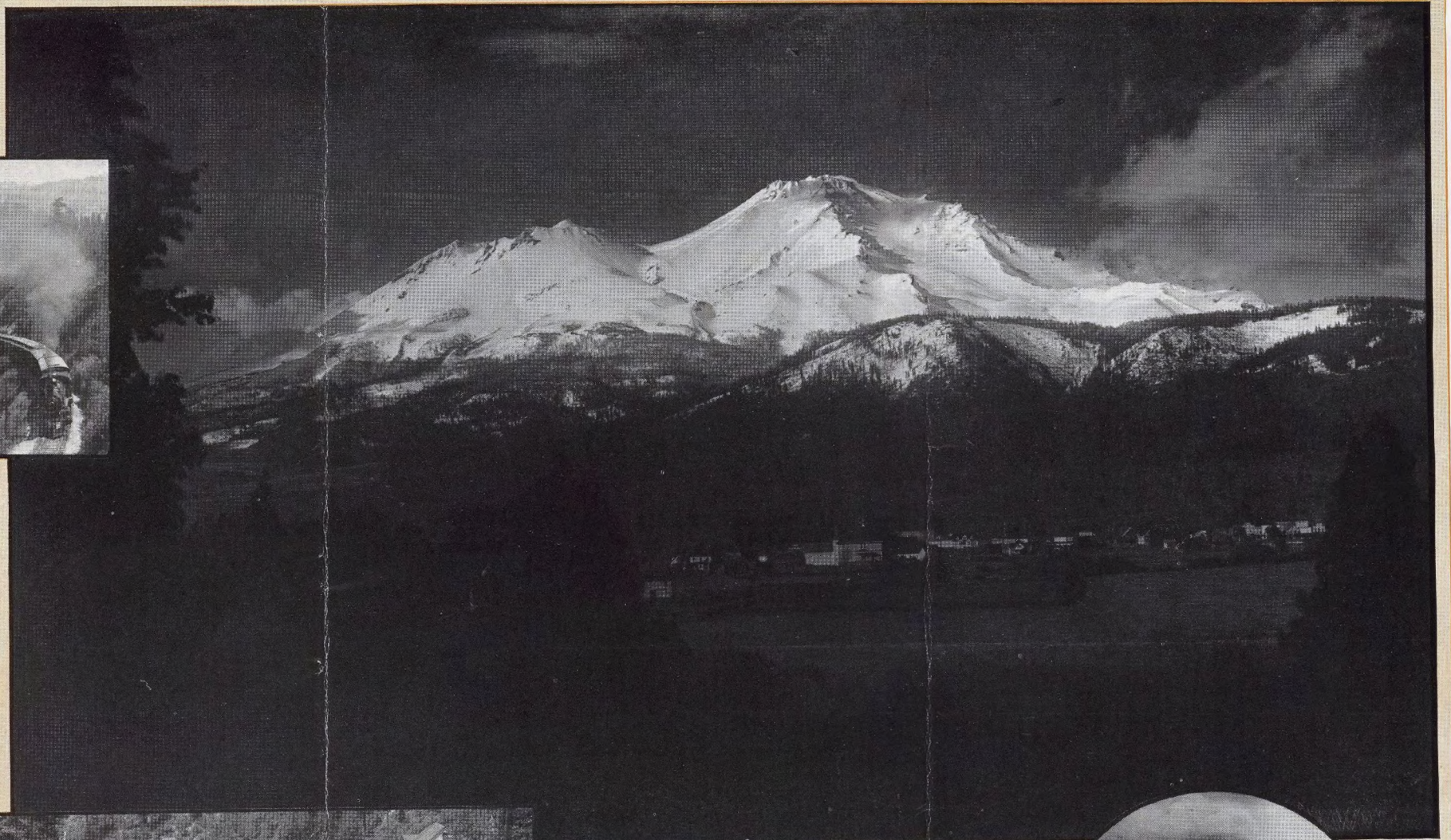
# Route



Mossbrae Falls



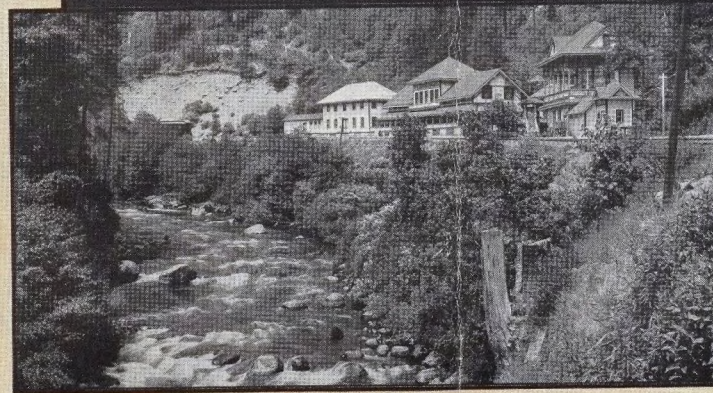
Sacramento  
River  
Canyon



Mount Shasta



Castle Crags, Sacramento River Canyon, California



Shasta Springs



In the Sacramento Valley



Lassen Peak







LOWER CALIFORNIA MEXICO



All the Pacific Coast is a Show Place

CITY OF GUAYMAS

TO WEST COAST OF MEXICO

MISSION SAN XAVIER

CASA GRANDE RUINS

CLIFF DWELLINGS

GIANT CACTUS

ROOSEVELT DAM

YUMA

SUNA DAM

BLITHE O

ROCKWATER

WHITWATER

IMPERIAL VAL CANNAL

EL CENTRO

COACHELLA

MECCA

WALNUT CANYON

MT. SAN JACINTO

CAJON PASS

IMPERIAL VALLEY

IMPERIAL VALLEY

IMPERIAL VALLEY

IMPERIAL VALLEY

IMPERIAL VALLEY

IMPERIAL VALLEY

CARRIBO GORGE

MISSION SAN JUAN CAPISTRANO

MISSION SAN LUIS REY

MISSION SAN JUAN CAPISTRANO

MISSION SAN LUIS REY

MISSION SAN JUAN CAPISTRANO

MISSION SAN LUIS REY

MISSION SAN JUAN CAPISTRANO

MISSION SAN LUIS REY

MISSION SAN JUAN CAPISTRANO

MISSION SAN LUIS REY

MISSION SAN JUAN CAPISTRANO

MISSION SAN LUIS REY

MISSION SAN JUAN CAPISTRANO

MISSION SAN LUIS REY

MISSION SAN JUAN CAPISTRANO

MISSION SAN LUIS REY

MISSION SAN JUAN CAPISTRANO



St. Louis and the Mississippi River



El Paso, Texas

# Golden State Route

From either Chicago or St. Louis one travels on the "Golden State Limited" by way of Kansas City over Rock Island Lines to Santa Rosa, N. M., thence via El Paso & Southwestern Railway through El Paso and Douglas to Tucson, Ariz., and from there to San Diego via Yuma and the San Diego & Arizona Railway through the scenic Carriso Gorge: also to Los Angeles from Yuma over that part of the Sunset Route already described.

From Chicago the "Californian" runs over Rock Island Lines and the El Paso & Southwestern to El Paso, whence it proceeds along Southern Pacific rails to Los Angeles.

Leaving Chicago on the "Golden State Limited" the route lies down the lovely Illinois River Valley, beside Starved Rock and through Joliet and Moline, in that historic region explored by the early French voyageurs. The broad Mississippi is crossed at Rock Island, site of the great inland arsenal of the United States Government, and following the course of picturesque streams the way

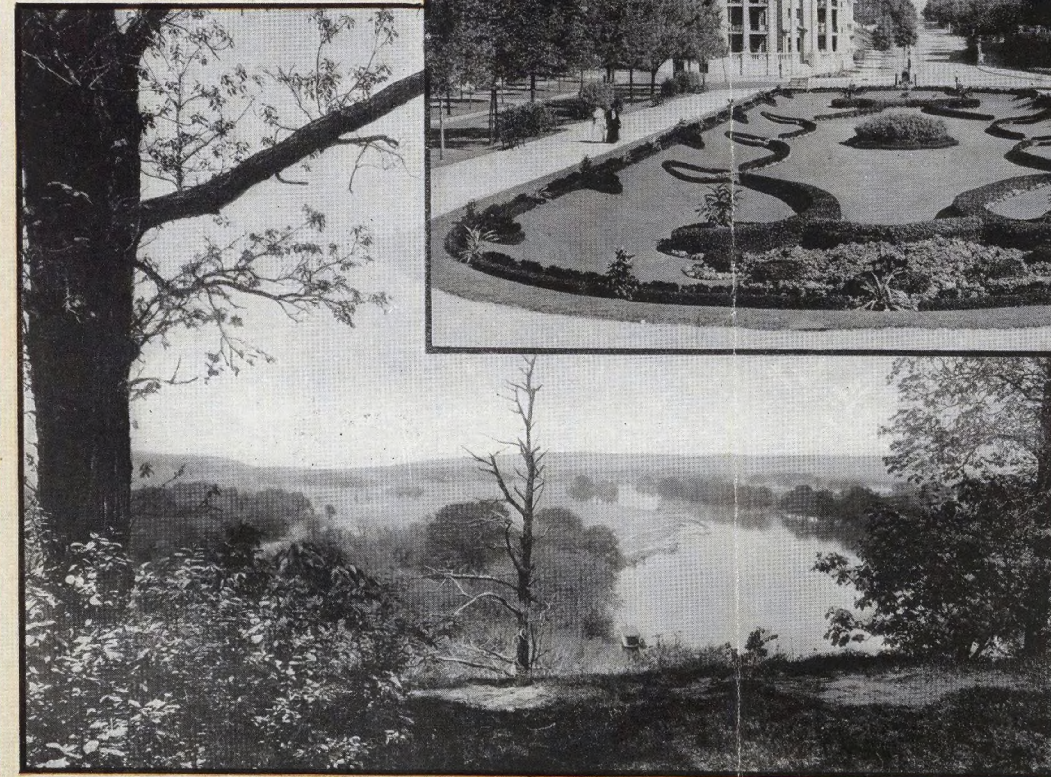
leads through Davenport and Allerton, Iowa, to Kansas City. The route from St. Louis to Kansas City traverses an interesting country—along the wooded foothills of the Ozarks, in the midst of the beautiful Gasconade and Osage river valleys, beside towering bluffs and through the picturesque countryside of central Missouri.

From Kansas City the route extends through Topeka, across the fertile grain fields of Kansas and over the plains of the "Panhandle" country of Oklahoma and Texas, where the vast cattle ranches are being broken up into farms. At Tucumcari, Santa Rosa and Alamogordo one is fairly within the enchanting Southwest, the region of frontier romance. All along the line through New Mexico into El Paso evidence is seen of the productiveness of this region under irrigation.

Beyond El Paso the "Golden State Limited" and the "Californian" continue westward by the routes already indicated.



Sunken Gardens,  
Kansas City, Missouri



Illinois River Valley from Starved Rock

# The Apache Trail of Arizona

## Apache Trail of Arizona "All-motor mountain trip"

"Sunset Route" travelers should avail themselves of the marvelous one-day rail and auto detour from Bowie to Maricopa, riding in comfortable 7-passenger cars over the Apache Trail—the great scenic highway between Globe and Phoenix, Arizona, via Roosevelt Dam. This is the most remarkable automobile trip in America, leading for 120 miles through the heart of Apacheland, a region rich in prehistoric relics, Spanish and Indian history and legends, yet doubly rich in the rugged grandeur of its mountains and rock masses. Cliffs and peaks, and the maze of tortuous canyons viewed as the road winds over the higher summits will thrill the beholder.

Along the way flourish gardens of strange plants including 28 varieties of cacti, while bright desert flowers and bloom-laden shrubs carpet hillside and mesa.

Of much interest is the great Roosevelt Dam—40 miles from Globe—constructed by the Government and completed February, 1911, at cost of over \$7,000,000. It forms one of the largest artificial lakes in the world, 30 miles long and 4 miles wide at broadest point. Its site is between the massive portals at entrance to the Salt River Canyon, where Tonto Creek joined the river. Its front is a curving wall of masonry 284 feet high, 50 feet thick at base and 1,125 feet across the top, which is surmounted by an auto driveway 16 feet wide. Apache Lodge, on a promontory just north of the dam, provides comfortable accommodations and good service for tourists stopping at the lake to enjoy the black bass and salmon fishing, and visit the nearby Tonto Cliff Dwellings, among those discovered

by Vasquez de Coronado in 1540. Among other interesting explorations is the trip to Natural Bridge, about 65 miles north of the lake.

During the winter months Pullman sleeping car service will be maintained certain days each week on the Sunset Limited from New Orleans via El Paso and Bowie to Globe from which point automobiles proceed over the Apache Trail to Phoenix. Pullman service then continues from Phoenix to Los Angeles.

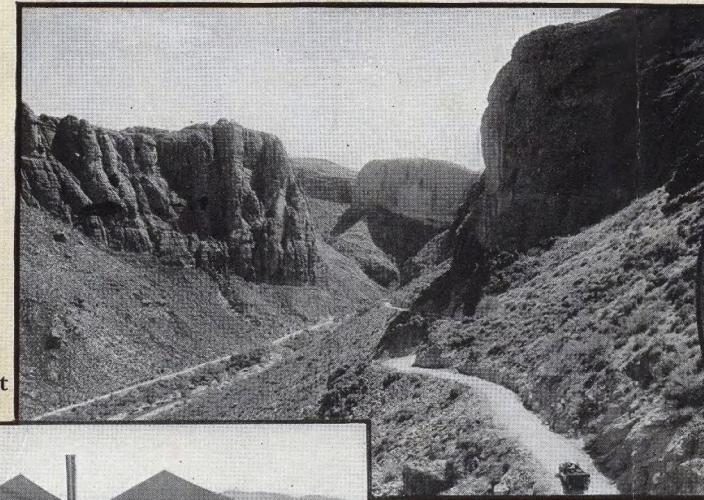
Eastbound from Los Angeles similar service reversed will be offered, the automobiles running from Phoenix to Globe with Pullman service from Globe to the East via Bowie and El Paso.

During summer months, westbound passengers leave main line trains at Bowie, using local service to Globe. The Dominion Hotel provides good accommodations at reasonable rates with meals a la carte. Auto stage leaves Globe in the morning, stopping at Fish Creek for lunch, arriving that night at Phoenix where connection is made with through Pullman service arriving Los Angeles following afternoon.

Eastbound passengers should take through standard sleeper Los Angeles to Phoenix making trip from that point by auto-stage to Globe where the night is spent at the Dominion Hotel. From Globe, day coach operates to Bowie where connection is made with Pullman service on eastbound trains.

*Secure latest schedules from Current Time Table.*

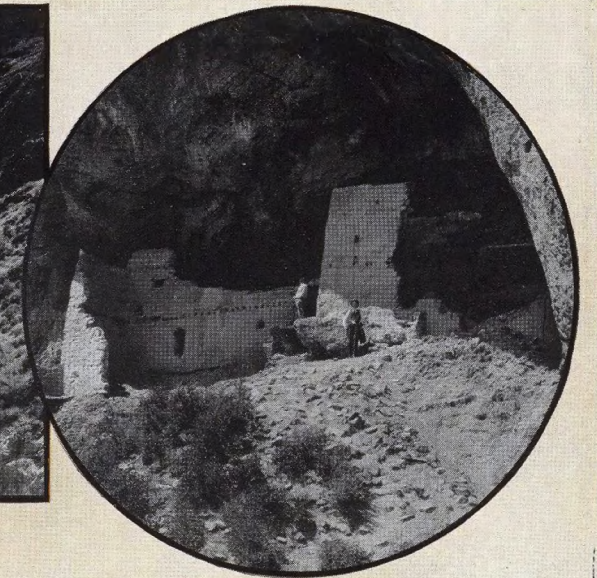
The Rail and Auto Detour fare between Bowie and Maricopa via Globe, Roosevelt Dam, and Phoenix, or for a side trip Bowie via Globe to Roosevelt Dam and return, is \$20.00 available to holders of tickets reading over the Southern Pacific from Deming, N. M., or points east thereof to Yuma, Ariz., or points west thereof, or vice versa.



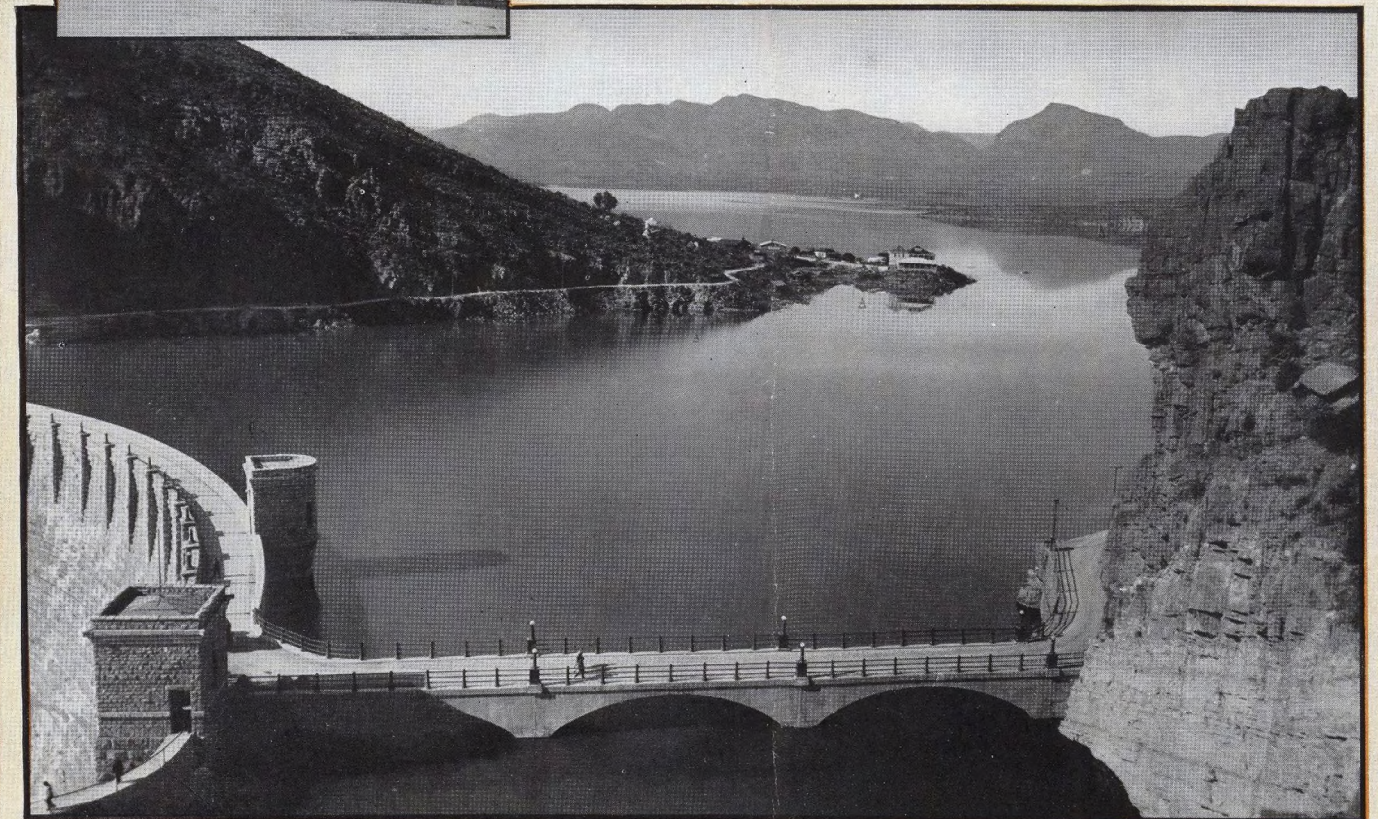
Apache Lodge, Roosevelt Lake



Fish Creek Canyon



Tonto Cliff Dwellings, Apache Trail Highway of Arizona



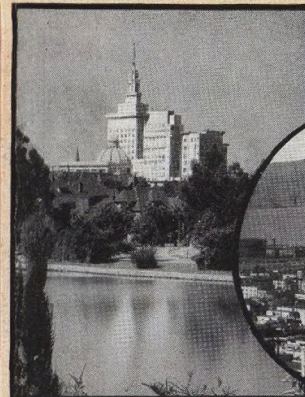
Roosevelt Dam



San Francisco



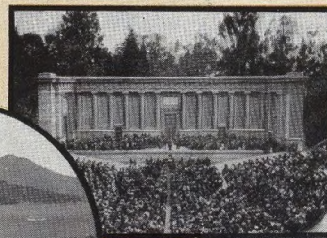
Ferry Station, San Francisco



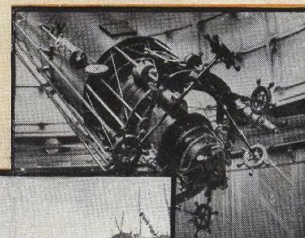
Oakland City Hall



Mount Tamalpais



Greek Theatre, Berkeley



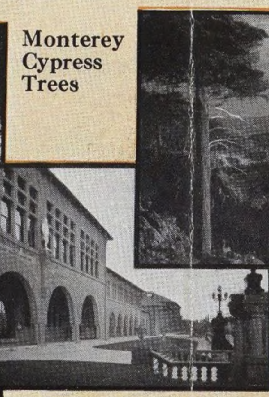
Lick Observatory



Santa Clara Valley



Russian River



Stanford University



Monterey Cypress Trees



Old Custom-House, Monterey



Casino and Beach, Santa Cruz



Hotel Del Monte

### San Francisco and Its Views

San Francisco is strikingly situated on the hilly promontory forming the southern horn of the world-famed Golden Gate. Splendid vistas are obtained from many vantage points easily accessible by cable and electric street car lines. From these summits the view extends over a wide and undulating expanse of house-tops, interspersed with parks: the city's southern border is hemmed by timbered ridges and sentined by Twin Peaks circled by an auto boulevard. The sky-scrapers of the "down-town" district lie far below. On the shore of San Francisco Bay to the north are Fort Mason, the Presidio (United States military reservation), and historic Fort Winfield Scott, jutting out sternly into the narrows. An eye-sweep beyond the straits takes in the graceful outline of Mount Tamalpais, with the bungalows of picturesque Sausalito, Belvedere and Tiburon nestling on steep shores, while midway to the east and north are Yerba Buena, Alcatraz and Angel islands.

San Francisco's hotels—the Palace, Fairmont, St. Francis and many others—its shops,

its restaurants, its Chinatown, its parks and boulevards, all charm the visitor.

**Oakland, Berkeley and Alameda**, located on the eastern side of the Bay of San Francisco, form practically one metropolitan area of 100 square miles. The district along the waterfront steadily increases in commercial and industrial importance, and charming residence sections extend far up into the sloping foothills. All these cities are served by the Electric Lines of the Southern Pacific, in connection with splendid ferry steamers giving 20-minute and 30-minute service, respectively, between Oakland and Alameda piers and San Francisco.

Oakland aspires toward the "city beautiful" ideal. The business section is extensive and substantial, there are many fine parks and boulevards, and the Hotel Oakland is a most desirable stopping place for tourists. Oakland's handsome City Hall, the tallest building in California, is a striking landmark. The Hotel Whitecotton and also the Hotel Claremont at Berkeley are modern and attractive. At Alameda's sunny beaches there is good bathing.

From San Francisco splendid auto boulevards lead southward down the Peninsula, and from Oakland and Berkeley well-kept highways reach into the picturesque foothill region, extending to the summit of Mount Diablo, 3,896 feet above sea level.

**University of California**, in Berkeley, is the second largest university in the world. The natural beauty of the campus with its fine old oaks and its background of hills is justly celebrated. Among the imposing structures are the Library, Greek Theatre and graceful Campanile.

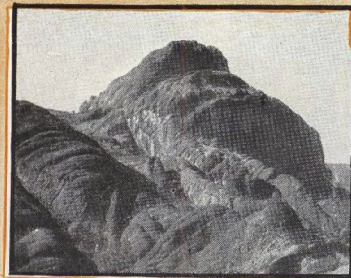
**Mount Tamalpais**, 2,604 feet above San Francisco Bay, looks down upon miles of summit, sea and shore. All about lie the Marin hills, on the west is the broad Pacific with San Francisco rising upon its peninsula across the Golden Gate. Beyond the bay are the cities of the eastern shore, with Mount Diablo on the sky-line above the Contra Costa hills. To reach Mount Tamalpais you leave San Francisco by ferry boat to Sausalito: thence electric train to Mill Valley and by "the crookedest railroad in the world" to the Tavern at the summit. A short branch line reaches Muir Woods, a forest of giant redwoods.

**Northwestern Pacific:** The picturesque Coast country north of San Francisco is reached by the Northwestern Pacific Railroad, extending to Eureka, on Humboldt Bay. Through a prosperous region of orchards, vineyards and farms the railroad passes Petaluma, Santa Rosa, Healdsburg, Cloverdale, Asti, Ukiah and Willits. Along Russian River is a sylvan wilderness with such resorts as Monte Rio, Guerneville and Cazadero.

## The Charm

**Leland Stanford Junior University** is located at Palo Alto, at the head of Santa Clara Valley, thirty miles south of San Francisco on the Southern Pacific Coast Line. It is richly endowed. Its handsome buildings, in mission style of architecture, are in the form of a great quadrangle and are surrounded by a beautiful park with palm-lined avenues and landscape gardening.

**Santa Clara Valley**, the garden spot of central California, is 70 miles long with average width of 15 miles, embracing in its network of orchards over 8,000,000 fruit trees. The sight of 125 square miles of orchards in bloom is worth going far to see. The landscape is dotted with pleasant rural homes. Miles of well-kept roads lead through the valley in all directions. Southern Pacific trains from Third Street Station, San Francisco, traverse its entire length, connecting at Palo Alto with the Peninsular Electric Ry., which offers the delightful "Blossom Trip" of 75 miles through the orchards, passing Los Altos, Saratoga with Congress Springs near-by, and Los Gatos to San Jose and return.



Pinnacles National Monument



California Redwood Park



Sacramento River Canyon



Paso Robles Hot Springs



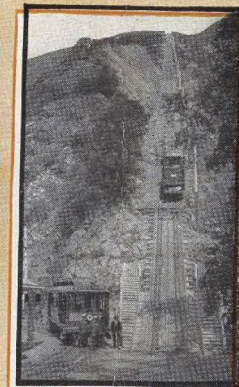
Capitol Sacramento



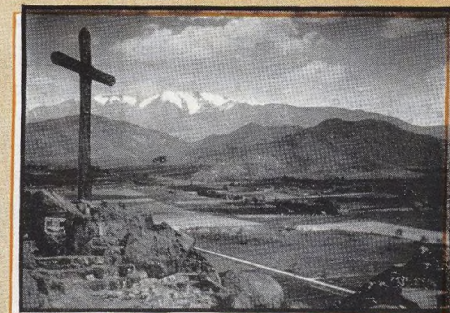
Byron Hot Springs



Ramona's Home



Mount Lowe Incline



Mount Rubidoux, Riverside



One of the Los Angeles Beaches

## of California

**Monterey Bay Points, Santa Cruz Big Trees, California State Redwood Park:** Monterey Bay, into which Cabrillo sailed his ships in 1542, is a few hours by Southern Pacific trains from San Francisco and groups around its shores Del Monte, with its great hotel and beautiful grounds, golf links, polo field, and 17-Mile Drive: historic old Monterey the resort towns of Pacific Grove, Carmel-by-the-Sea, Santa Cruz with its seaside hotel—the Casa del Rey and Casino, bathing beach and splendid golf links: Capitola-by-the-Sea with the attractive Hotel Capitola, surf bathing, fishing and outdoor recreations. At Carmel-by-the-Sea is the old Mission, San Carlos del Carmelo, and a few miles beyond is picturesque Highlands Inn high above the ocean. Six miles by train from Santa Cruz are the Santa Cruz Big Trees, and from Boulder Creek on Southern Pacific branch from Felton, the California State Redwood Park in Big Basin is reached by a 12-mile auto trip. There is a good inn and summer camp.

All roundtrip tickets to or from the east covering the journey between San Francisco and Los Angeles are honored without addi-

tional charge via Santa Cruz and Big Trees, and side trip to Del Monte, Monterey and Pacific Grove may be made at slight additional fare.

**Byron Hot Springs**, with comfortable hotel and mineral water baths, is reached by a journey of two and one-half hours from San Francisco. Every facility is offered for enjoying outdoor recreation in a climate pleasant and invigorating.

**Sacramento Canyon Resorts:** All along the course of the upper Sacramento River are many rustic retreats. At Shasta Springs, where all trains stop, travelers may drink of the sparkling mineral waters which have made the resort famous. A cable incline car takes visitors to the attractive hotel and cottages, which stand on a pine-timbered plateau above the station. Further down the canyon are Shasta Retreat, Dunsmuir, Castle Crag, Castle Rock and Castella.

**The Bret Harte Country:** A trip over Southern Pacific lines to Oakdale, and thence east along the Sierra Ry., leads into the region made famous by Bret Harte's tales of the Argonauts. Here also Mark Twain's "Jumping Frog of Calaveras" had its origin. The historic old towns of the Mother Lode—Angels, Chinese, Jamestown, Sonora, Columbia, San Andreas—hold much of interest to the tourist.

The Calaveras Big Tree Grove is reached by stage from Angels.

**Pinnacles National Monument:** From Soledad, on Southern Pacific Coast Line, by auto twelve miles to the east, or from Hollister by auto stage twenty miles south, is reached the Pinnacles National Monument—remarkable formations of volcanic origin. Vancouver, famous British navigator, first recorded this wilderness of rock.

**Paso Robles Hot Springs** is midway between San Francisco and Los Angeles. The Hotel El Paso de Robles is well equipped with mineral water baths and provides excellent accommodations and service, with golf and other recreations.

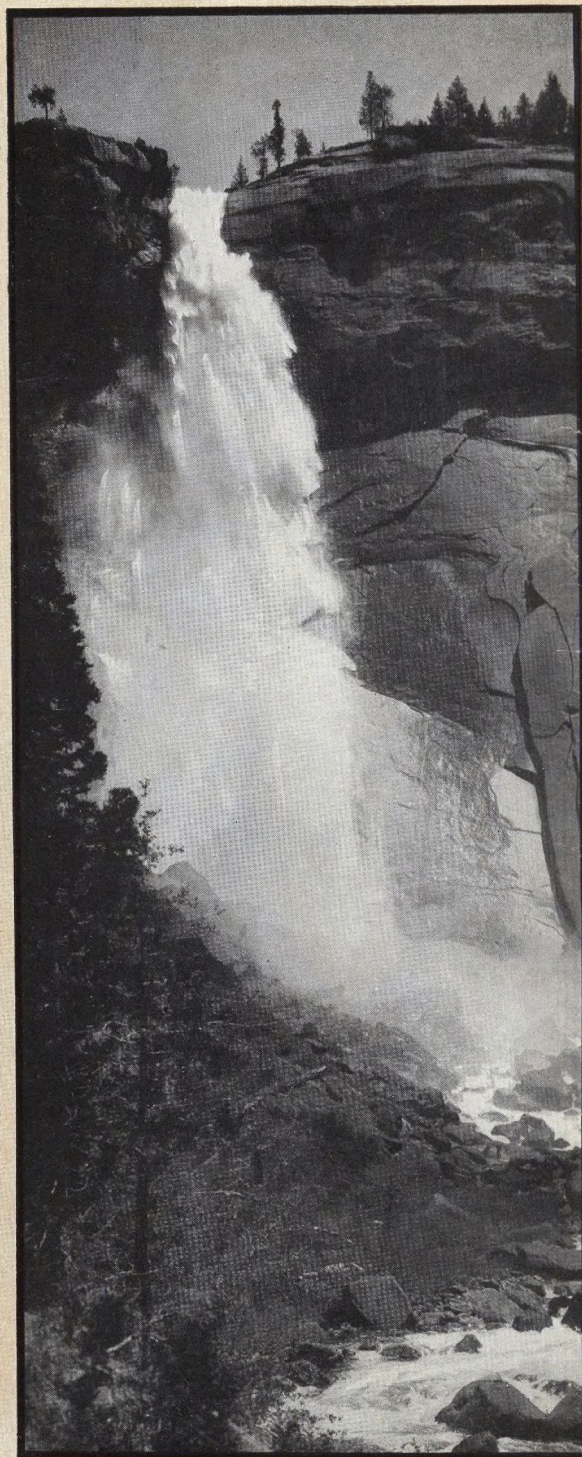
**Santa Barbara** is on Southern Pacific Coast Line 104 miles north of Los Angeles. Its delightful climate and charming surroundings, its old Mission and many beautiful homes and attractive hotels—the Arlington, Samarkand, El Mirasol and El Encanto, place it among California's favorite all-year seaside resorts.

**Around Los Angeles:** No region is more attractive to the tourist than this. Roundabout the city are picturesque places such as Pasadena, with its charming homes and famous hotels—the Maryland and Vista Del Arroyo, the Huntington, Raymond and Green:

Mount Lowe, reached by electric and incline railroad: San Gabriel, home of the classic Mission Play: Redlands, city of wealth: Riverside, noted for its unique Mission Inn and the drive to the summit of Mount Rubidoux: San Bernardino, with its mountain background and the starting point for the "101-Mile Drive on the Rim of the World."

A place of much interest is "Ramona's Home," at Camulos, a few miles east of Montalvo, on the Coast Line. Another of southern California's show places is Palm Canyon near Palm Springs, reached by auto stage from Whitewater.

Within half an hour's ride from Los Angeles by Pacific Electric Ry. are the seaside resorts of Santa Monica, Ocean Park, Venice, Hermosa Beach, Redondo, Long Beach the principal beach city, with its excellent Hotel Virginia: also Balboa and Newport Beach. Trains to San Pedro connect with steamer for Avalon, on Santa Catalina Island, reached in three hours and noted for its yellowtail, swordfish and tuna fishing. The Hotel St. Catherine provides the best of service.



Nevada Falls, Yosemite National Park



Lake Tahoe

**Lake Tahoe:** A mile-high lake, 23 miles long and 13 miles wide, its fathomless waters a regal blue, set in a great bowl of rugged peaks that rise 11,000 feet above sea level—such is Lake Tahoe. About its circling shores are unfolded panoramas of matchless sublimity, with green meadows and sandy beaches, dense fragrant pine forests that come down to the lake's very brink, rocky cliffs and promontories, and over all the lordly mountains with their crests of glittering snow, towering 5,000 feet above the serene face of Tahoe. The shore is dotted with summer homes and resorts, for this is the ideal vacation realm, with nothing to mar the serenity of mid-summer weather. The lover of life out-of-doors may hunt in the High Sierra, catch gamey trout in lake and streams, enjoy the rarest of alpine climbing, ride horseback over mountain trails, motor along tree-shaded roads or enjoy any recreation that heart could wish for. Roundabout Tahoe are scores of gleaming glacial lakes.

Lake Tahoe is within a night's ride of San Francisco by Southern Pacific "American Canyon Route" to Truckee, whence the Lake Tahoe Ry. runs up the canyon of the Truckee River fifteen miles to Tahoe Tavern, with its Casino, Pier and Golf Links. Other resorts

around the lake include Homewood, McKinney's, Moana Villa, Pomin's, Emerald Bay Camp, Tallac, Al Tahoe, Bijou, Lakeside Park, Glenbrook, Brockway and Tahoe Vista, and in the surrounding region are Fallen Leaf Lodge, Glen Alpine, Deer Park Springs, Rubicon Springs and Meyers Retreat. From Tahoe Tavern a steel steamer makes the 72-mile trip around the lake daily.

During the season special fares from Truckee to Lake Tahoe can be availed of by holders of through tickets. The fare to Tahoe Tavern and return is \$3.00: on Sunday only, \$1.80. Other special fares cover the trip around the lake, with stop-over at any resort.

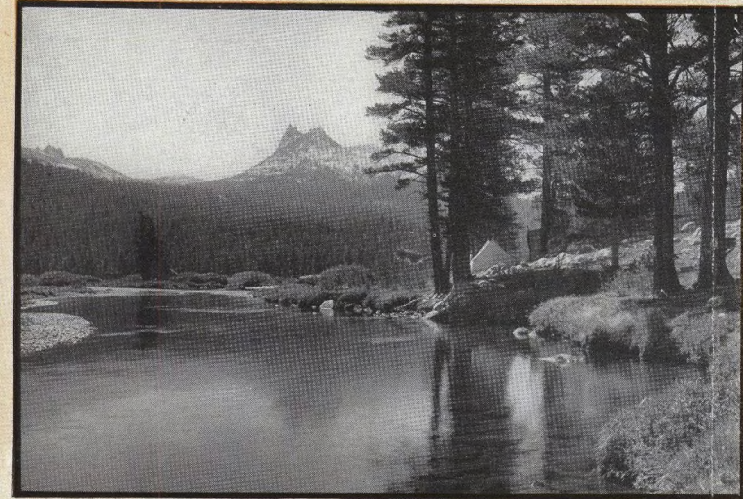
**The Tioga Pass Auto Road** between Lake Tahoe and Yosemite enables tourists via Southern Pacific "American Canyon Route" to detour between Truckee and Merced, connecting at either point with Southern Pacific trains. This is a delightful 3-day auto trip.

**Yosemite National Park** (open all year) stands second to none among the wonders of the world. The famous mountain valley of Yosemite lies in the High Sierra of California, near headwaters of the Merced River—a place of precipices, titanic granite spires and domes and magnificent waterfalls.

Bridal Veil Falls are deemed among the most graceful in the West and loftier than the highest falls in Europe. Yosemite Falls are the mightiest that plunge into the valley, 2,600 feet, the upper reach falling in sheer descent 1,600 feet. Vernal, Nevada, Illilouette and Ribbon Falls rival these cataracts in beauty. Among the massive rock features which give this region its fame are the great cliff El Capitan ("The Captain"), rising 3,604 feet above the valley: Sentinel Rock, 3,100 feet: the fractured face of Half Dome, 4,892 feet, and Glacier Point, 3,254 feet, so nearly vertical that a stone dropped from its top strikes the base close to valley floor.

The Yosemite Valley is reached from San Francisco or from Los Angeles by the Southern Pacific "San Joaquin Valley Line," with through sleeping cars to Merced, there connecting with Yosemite Valley R. R. to El Portal and auto-stage thence fifteen miles to center of Valley. During the summer Yosemite is also reached from Merced by auto-stage via Miami and Wawona.

**Mariposa Grove of Big Trees** is reached from Yosemite Valley by auto-stage through Wawona, on southern boundary of the Park, and also by auto-stage from Merced. Here



Kings-Kern Region

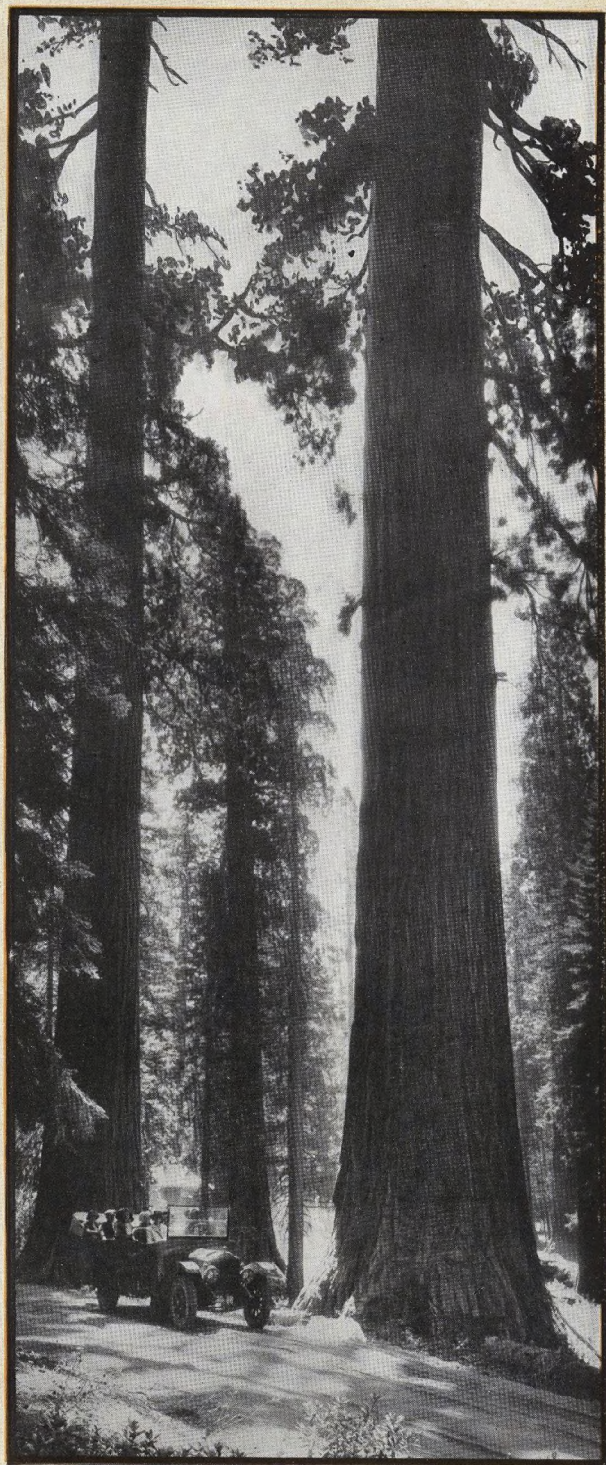
stand over six hundred fine specimens of the Sequoia Gigantea. The giant trees range from 15 to 30 feet in diameter and many of them exceed 300 feet in height. The Big Tree Wagon, 227 feet in height, has a 26-foot archway in its trunk through which the auto road passes.

**Sequoia National Park** is reached via Southern Pacific to Visalia or Exeter, thence by electric railway to Lemon Cove, connecting with auto stages to Giant Forest, forty miles, during the summer and autumn.

From Giant Forest Lodge saddle-animals and pack trains, with guides, leave three days weekly during the season for Kings River Canyon Camp, for fishing and hunting. The distance is about thirty-five miles.

**General Grant National Park** is reached via Southern Pacific to Fresno or Sanger, thence by auto stage during the summer and autumn to General Grant Camp, about sixty-five miles.

**Huntington Lake** lies in the High Sierra north of the King's River and is reached by Southern Pacific via Fresno to El Prado, thence over San Joaquin & Eastern Ry. to Cascada, and four miles by auto. Huntington Lake Lodge provides every facility for recreation and enjoyment. The service is excellent. Fishing and hunting are of the best.



Mariposa Big Tree Grove



For information regarding passenger fares, time schedules, Pullman reservations, or freight rates and freight service, etc., address the following:

ATLANTA, GA., 319-320 Healey Bldg., Walton and Forsythe Streets.	D. Asbury, General Agent
BALTIMORE, MD., 402 Hartman Bldg., Light and Redwood Streets.	W. B. Johnson, General Agent
BIRMINGHAM, ALA., 406 Woodward Bldg., First Avenue and Twentieth Street.	S. J. Brown, General Agent
BOSTON, MASS., 406-410 Old South Bldg., 294 Washington Street.	E. S. Leavitt, General Agent
BUFFALO, N. Y., Ellicott Square Bldg., Main and Swan Streets.	G. H. Vogel, General Agent
CHICAGO, ILL., Southern Pacific Bldg., 35-37 West Jackson Boulevard.	C. T. Collett, General Agent
CINCINNATI, OHIO, Wiggins Bldg., corner Vine and Fifth Streets.	Robt. McDowell, General Agent
CLEVELAND, OHIO, 415 Hippodrome Bldg., Euclid Avenue.	B. G. Cook, General Agent
DENVER, COLO., 315-316 Denham Bldg., 18th and California Streets.	F. W. Sedgwick, General Agent
DETROIT, MICH., 217 Majestic Bldg., Woodward and Michigan Avenues.	W. W. Halo, General Agent
EL CENTRO, CAL., 206 N. Oregon Street.	C. W. Runge, Dist. Freight and Passenger Agent
EUGENE, ORE.	W. C. McCormick, Assistant General Freight and Passenger Agent
FRESNO, CAL.	L. L. Graham, Dist. Freight and Passenger Agent
INDIANAPOLIS, IND., Merchants Bank Bldg., Meridian and Washington Streets.	H. E. Ish, Dist. Freight and Passenger Agent
KANSAS CITY, MO., Railway Exchange Bldg., Seventh and Walnut Streets.	Lyon Liston, General Agent
KLAMATH FALLS, ORE.	H. H. Gray, General Agent
LONG BEACH, CAL.	J. J. Miller, Dist. Freight and Passenger Agent
LOS ANGELES, CAL., Pacific Electric Bldg.	L. Overman, Dist. Passenger Agent
MEDFORD, ORE.	H. P. Monahan, Dist. Passenger Agent
MEMPHIS, TENN., Exchange Bldg., 130 Madison Avenue.	A. S. Rosenbaum, Dist. Freight and Passenger Agent
MERCED, CAL.	L. C. Bouchard, General Agent
NEW YORK, N. Y., 165 Broadway.	I. T. Sparks, Dist. Freight and Passenger Agent
OAKLAND, CAL., 13th Street and Broadway.	A. J. Poston, General Agent, Passenger Department
OKLAHOMA CITY, OKLA., 314 First National Bank Bldg.	L. Richardson, Dist. Freight and Passenger Agent
ODEN, UTAH, 525 Eccles Bldg.	J. A. Eads, General Agent
PASADENA, CAL.	D. R. Owen, Traveling Agent
PHILADELPHIA, PA., 1602 Chestnut Street.	G. W. Wetherby, Dist. Passenger Agent
PHOENIX, ARIZ.	F. T. Brooks, General Agent
PITTSBURGH, PA., Chamber of Commerce Bldg., Smithfield St. and 7th Ave.	Dick Smith, Dist. Freight and Passenger Agent
RENO, NEV.	G. G. Herring, General Agent
RIVERSIDE, CAL.	J. M. Fulton, Assistant General Freight and Passenger Agent
SACRAMENTO, CAL., 801 K Street.	J. R. Downs, Dist. Freight and Passenger Agent
SALEM, ORE.	C. E. Spear, Dist. Freight and Passenger Agent
SALT LAKE CITY, UTAH, 41 South Main Street.	A. A. Mickel, Dist. Freight and Passenger Agent
SAN DIEGO, CAL., 677 Spreckels Bldg.	Press Bancroft, General Agent
SAN FRANCISCO, CAL., 65 Market Street.	A. D. Hagan, Dist. Freight and Passenger Agent
SANTA ANA, CAL.	J. N. Harrison, Dist. Passenger Agent
SANTA BARBARA, CAL., 937 State Street.	L. B. Valla, Dist. Freight and Passenger Agent
SANTA ROSA, CAL.	R. J. Smith, Dist. Freight and Passenger Agent
SAN JOSE, CAL., First and San Fernando Streets.	R. B. Houston, Dist. Freight and Passenger Agent
SEATTLE, WASH., 314 Union Street.	E. Shillingsburg, Dist. Freight and Passenger Agent
ST. LOUIS, MO., Southern Pacific Bldg., 312-314 North Sixth Street.	B. C. Taylor, General Agent
STOCKTON, CAL.	L. B. Banks, General Agent
TONOPAH, NEV., Mizpah Hotel.	S. C. Beane, Dist. Freight and Passenger Agent
TUCSON, ARIZ., Score Bldg., 233 East Congress Street.	E. L. Turnbaugh, Traveling Agent
INDUSTRIAL AGENTS.	E. J. Fenchurch, Assistant General Freight and Passenger Agent
	A. K. Frye, 65 Market St., San Francisco, Cal.; C. R. Smurr, Pac. Elec. Bldg., Los Angeles, Cal.

FOREIGN AGENCIES

GENOA (4), ITALY, via Roma 8a	Brizzolesi, Kemsley & Millbourn, General Agents
HAMBURG, GERMANY, 18 Glockengiesserwall	Rud. Falck, General Agent
HAVANA, CUBA, Cuba No. 106	W. E. Ridsdewy, General Agent
LIVERPOOL, ENGLAND, 21 Water Street	Thos. Cooper, General Agent
LONDON, ENGLAND, 49 Leadenhall Street	R. G. Bonsor, Agent
MEXICO CITY, MEX., Avenida Cinco de Mayo, No. 32	Geo. F. Jackson, General Agent
MONTERREY, MEX., Langstroth Bldg., Escobedo and Padre Mier Streets	Alfonso Marquez, Traveling Agent
PARIS, FRANCE, 3 Rue Tronchet	H. Desmidt, General Agent
JOSEPH HELLEN General Passenger Agent Houston, Tex.	JOHN M. SCOTT Asst. Pass. Traffic Manager Portland, Ore.
J. T. MONROE General Passenger Agent New Orleans, La.	W. M. SIMMONS Gen. Freight and Pass. Agent Sou. Pac. Atlantic S. S. Lines New York, N. Y.
	F. S. MCGINNIS Asst. Pass. Traffic Manager Los Angeles, Cal.
	H. LAWTON Gen. Freight and Pass. Agent Sou. Pac. R. R. of Mex. Guaymas, Mex.
	J. H. R. PARSONS Asst. Pass. Traffic Manager San Francisco, Cal.
	CHAS. S. FEE Passenger Traffic Manager San Francisco, Cal.

**FOUR  
GATEWAYS  
TO THE  
PACIFIC  
COAST**



VIA

**SOUTHERN  
PACIFIC**

**FOUR  
GATEWAYS  
TO THE  
PACIFIC  
COAST**



VIA

**SOUTHERN  
PACIFIC**

**Four Gateways to the Pacific Coast**



Golden Gate at Sunset

THE transcontinental journey to the Pacific Coast from the Atlantic seaboard or any of our eastern states holds out to the tourist a most fascinating trip—the reaching of that famed region lying beyond the great mountain ranges of the Rockies, the Sierra Nevada and the Cascades.

With its four routes via New Orleans, El Paso, Ogden and Portland, over which run daily the best appointed and best operated trains in the West, with dining car service on all trains, the Southern Pacific offers the choice of entering California by a southern, a central or a northern gateway, each through a territory distinct in its characteristics.

These routes are described in detail later, and are here briefly stated in the nature of an index, with mention of their well-known limited and express trains.

**Sunset Route**

“Sunset Limited” and “Sunset Express” from New Orleans through Louisiana, Texas, New Mexico, Arizona and southern California to San Diego and to Los Angeles: thence north to San Francisco via the Coast Line. In addition to connection at New Orleans with daily through trains from and to northern and eastern cities, “Sunset Limited” and “Sunset Express” make close connection with Southern Pacific’s Atlantic Steamship Line between New York and New Orleans, ships leaving both ports weekly. There is also a Southern Pacific steamship line between Havana, Cuba, and New Orleans, with weekly sailings.

The “Sunset Route” through Yuma via Mexicali and Calexico to El Centro, there connects with the San Diego & Arizona Railway which passes through the scenic “Carriso Gorge” and forms the shortest line from New Orleans to San Diego.

**American Canyon Route via Ogden**

“San Francisco Overland Limited” and “Pacific Limited” from Chicago through Omaha, Cheyenne and Ogden and “St. Louis Express,” from St. Louis through Kansas City, Denver and Ogden—cross the Great Salt Lake Cut-Off, traverse Nevada and enter California over the Sierra Nevada, passing along the rim of the American River Canyon, thence through Sacramento, arriving at San Francisco via Oakland Pier and ferry steamer across San Francisco Bay.

Connection at Ogden with “Pacific Limited” to San Francisco, can be made from Denver via the Denver & Rio Grande Western through Salt Lake City.

**Shasta Route**

“The Shasta,” “Oregonian,” “San Francisco Express” and “California Express” from Seattle and Tacoma, Wash., and Portland, Ore., through the Willamette, Umpqua and Rogue river valleys, crossing the Siskiyou, skirting Mount Shasta and following the Sacramento River Canyon and Valley to San Francisco Bay, arriving at San Francisco via Oakland Pier and ferry steamer.