



**Vacation Notes
on Santa Fe trips**





Santa Fe

the more-to-enjoy route for vacation travel

Maybe you have had your heart set on a vacation in the colorful, romantic west and southwest. In that case, just check over some of the specific places "Along the Santa Fe." See if they don't more than ever set up that urge to "go vacationing."

There is the Grand Canyon in Northern Arizona—something every American should see . . . and see again.

There is the Dude Ranch Country of New Mexico, Northern Arizona, and the Colorado Rockies—rest and ride or just revel in beautiful ranch surroundings.

There is Carlsbad Caverns in southeastern New Mexico—the "underground Grand Canyon" . . . the historical Indian Country . . . and Yosemite National Park, one of the world's scenic beauty spots.

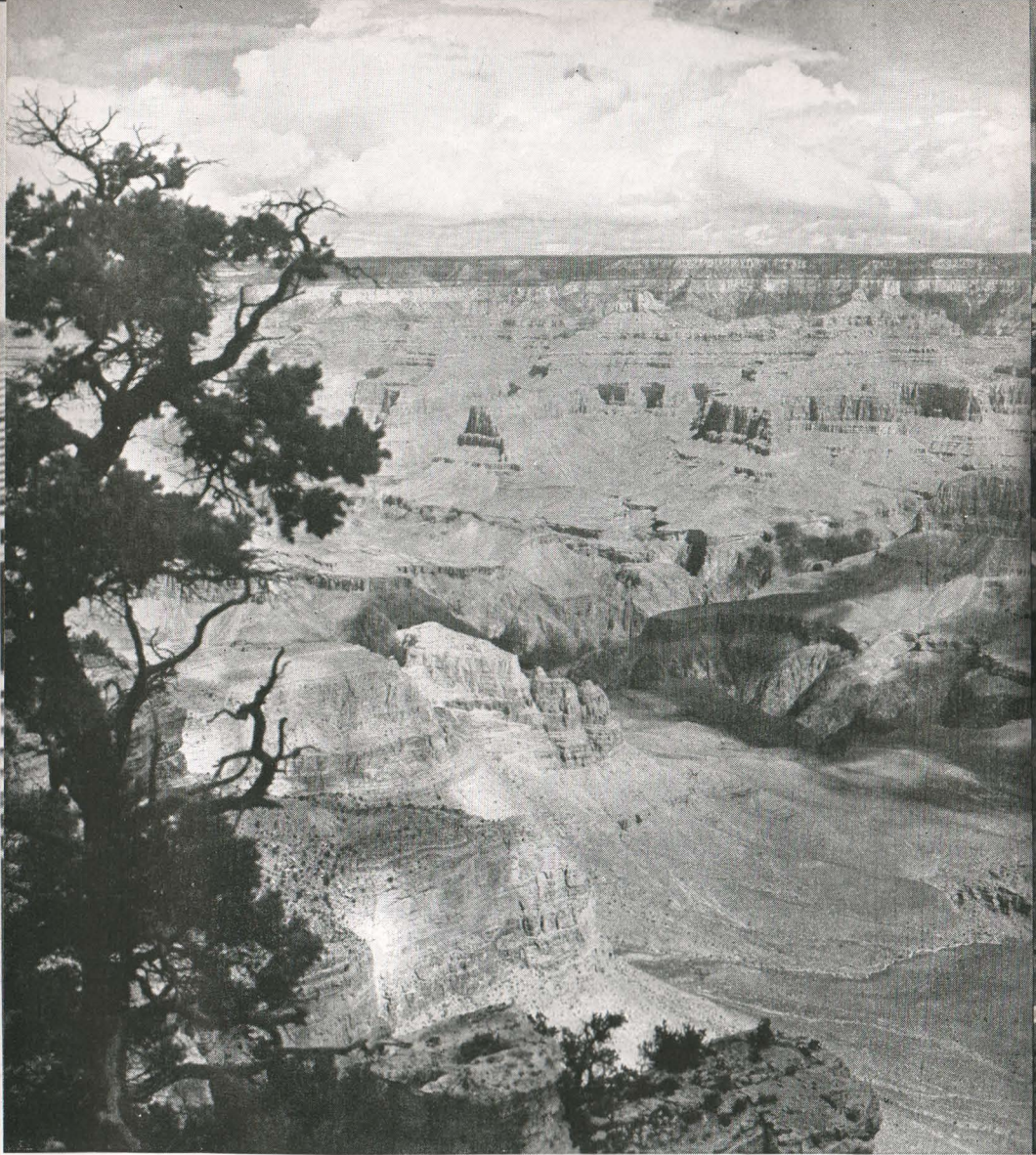
Out in California you are offered practically everything you want in a vacation—from swimming in the Pacific to skiing in the snowy Sierras, from modern city glamour to tradition-steeped Spanish missions.

The southwest is a big territory; it includes the colorful States of Colorado . . . Texas . . . New Mexico . . . Arizona and California. It is a land of romance and pleasure, friendly people and beautiful scenery.

Yes, traveler, after you've looked over the pictures in this book you'll understand why you can find plenty of happy answers when you "Go Santa Fe, the more-to-enjoy route for vacation travel."



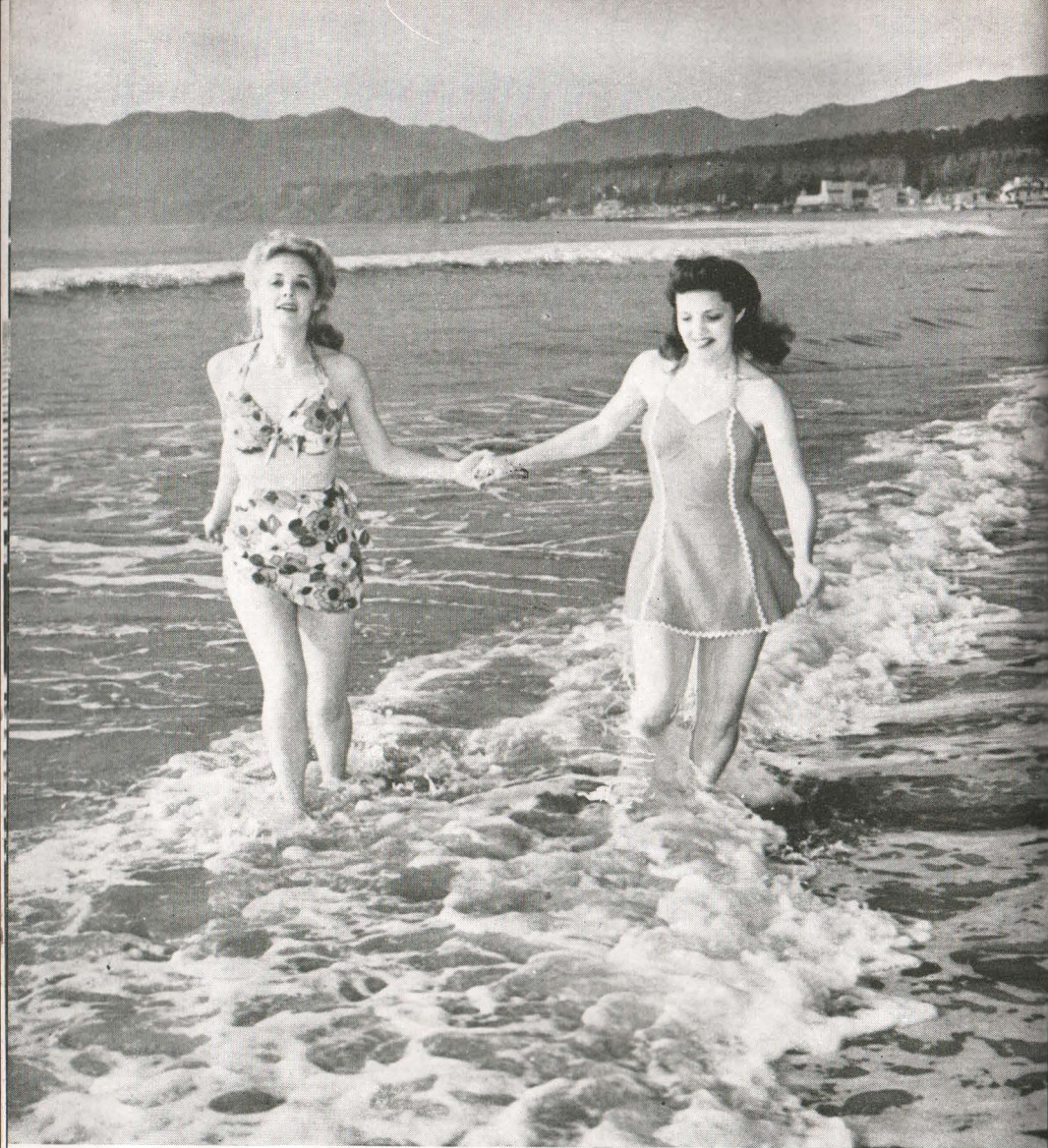
General Passenger Traffic Manager, Santa Fe System Lines
Chicago 4, Illinois



The Grand Canyon . . . a breath-taking spectacle of indescribable beauty is 4 to 18 miles wide, 217 miles long, and a vertical mile deep. Santa Fe provides daily through Pullman service direct to the South Rim via a new daily train, The Grand Canyon. Famous El Tovar hotel, and Bright Angel Lodge and Cabins on the brink of the Canyon are under Fred Harvey management.



Down the Trails into Grand Canyon . . . starting from the rim the trails, built by Government Engineers and sited for beauty as well as safety, unfolds an ever-changing panorama of rugged inner-Canyon scenery. Saddle trips down the Canyon Trails, led by experienced guides, are the most thrilling scenic adventures to be enjoyed anywhere in the world.



Southern California . . . a land apart from all others, offering a delightful year-round climate, a wide variety of marine, desert, pastoral and mountain scenery, outdoor sports at their best, beautiful cities and villages, and a rich historical background. The great Santa Fe fleet of trains to, from and in California offers ultra-modern service to fit every purse.



San Francisco . . . with its thrilling historical background, is "one of the world's most interesting cities." Here are a 35-mile waterfront; 32 parks; famous cafes and hotels, military headquarters, the largest harbor on the Pacific Coast, Chinatown, and the two largest bridges in the world. (Above) A section of the Bay Bridge, linking San Francisco and Oakland.



Los Angeles . . . the metropolis of Southern California is the hub of a vast pleasureland including such famous travel objectives as Hollywood with its movie and radio studios, Catalina Island, Pasadena—site of the annual Tournament of Roses, and many other great vacation attractions. (Above) One of the many beautiful golf courses in the Los Angeles area.



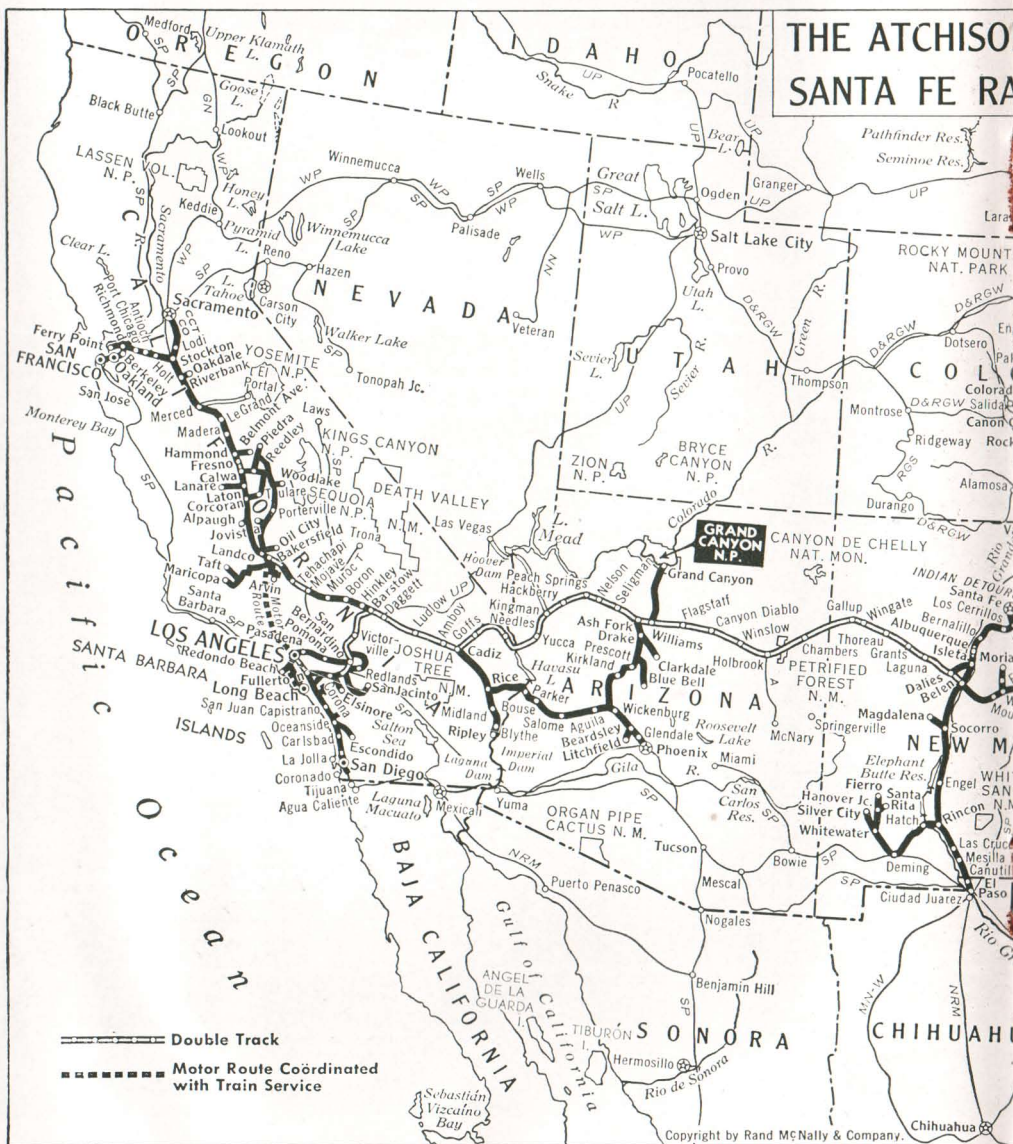
San Diego . . . is a city of varied vacation pleasures. Sailing, boating and water sports on the San Diego Bay—a trip to the many nearby ancient missions—or a journey to the famous resorts on the Mexican border is a part of the variety available to San Diego visitors. This city and port is “home” for a mighty group of our Navy and Marine forces.



Yosemite National Park . . . about 200 miles east of San Francisco on the western slopes of California's Sierra Nevada Mountains, is one of Nature's most enchanting scenic wonderlands . . . with majestic waterfalls, giant forests and glacial lakes. Santa Fe provides swift daytime service for Yosemite, from both Los Angeles and San Francisco.

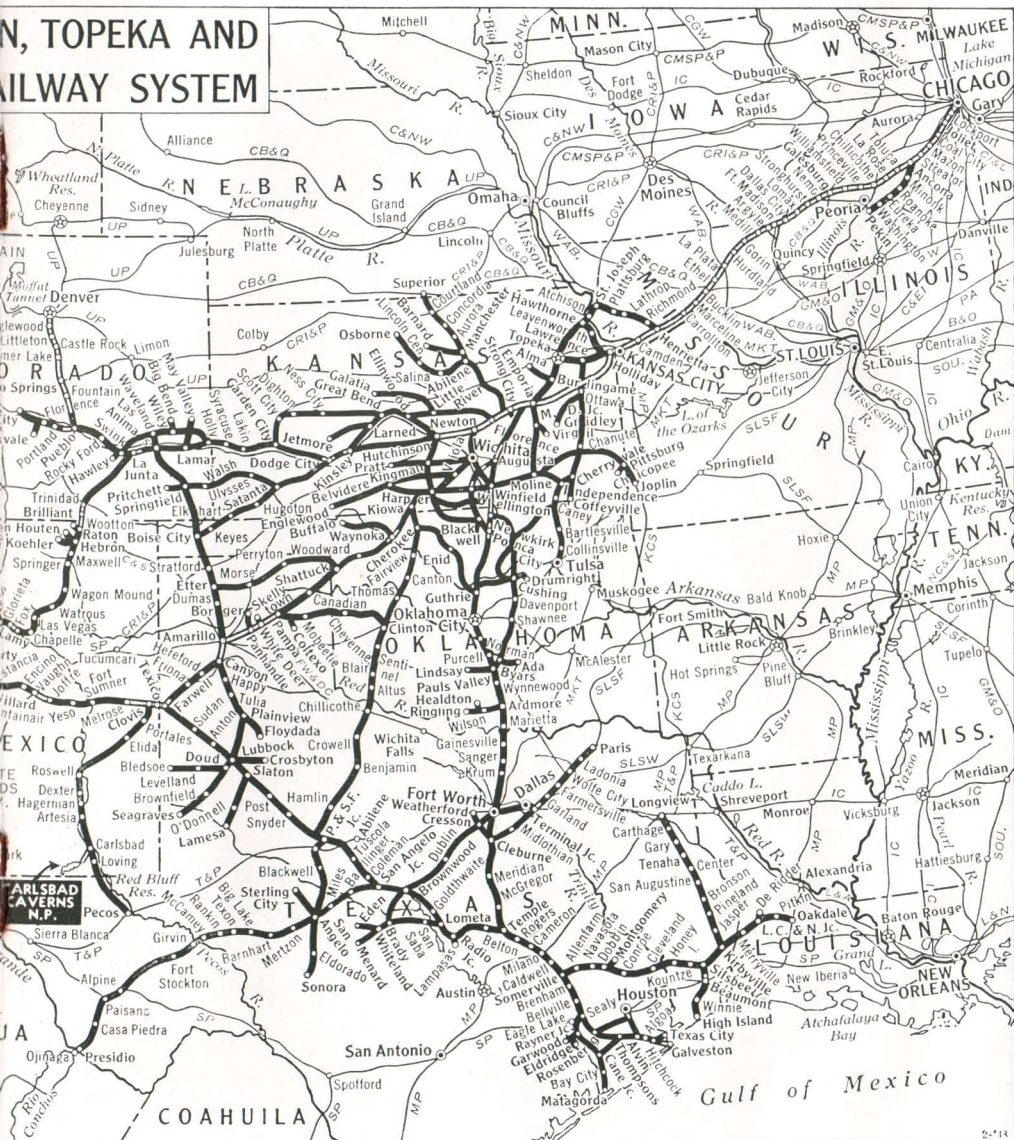


Summer Dude Ranches . . . Along the Santa Fe, in the cool mountains of Colorado, New Mexico, Northern Arizona, and California, are scores of fine dude ranches offering a wide choice of comfortable accommodations. The Santa Fe ranch booklet gives a world of helpful information on the fine ranches in this territory. Ask your Santa Fe representative for a free copy.



The Atchison, Topeka and Santa Fe Railway System embraces more than 10,000 miles of track, connecting the West Coast of the United States and San Francisco, California; and through Oklahoma and Texas to the Gulf of Mexico. It is the main line of communication between Chicago and California; the only railroad entering Grand Canyon National Park.

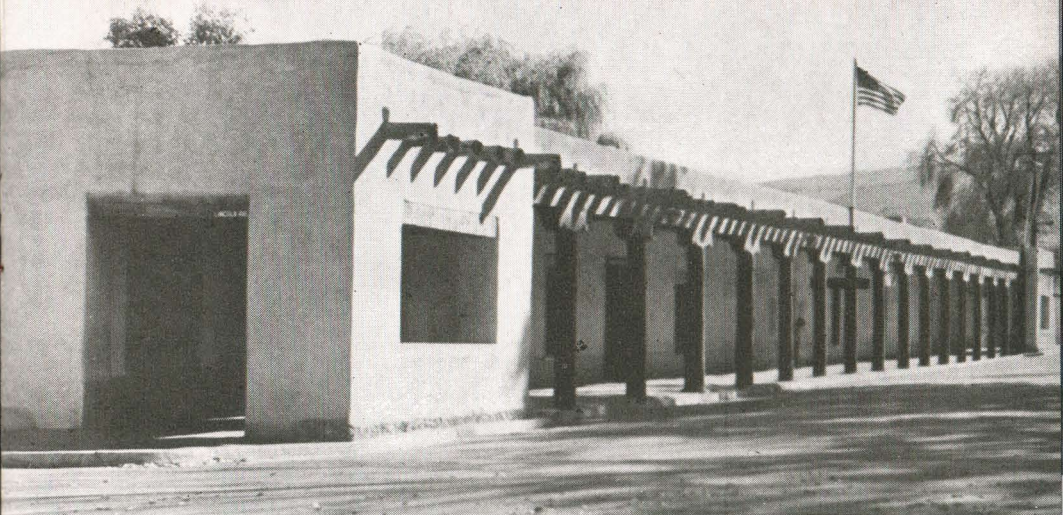
N, TOPEKA AND RAILWAY SYSTEM



an 13,085 miles of track, stretching from Chicago and Denver; to Los Angeles, San Diego, and the Mexican border • Santa Fe is the only railroad under one management all al Park; the only railroad to Carlsbad, New Mexico, for Carlsbad Caverns National Park.



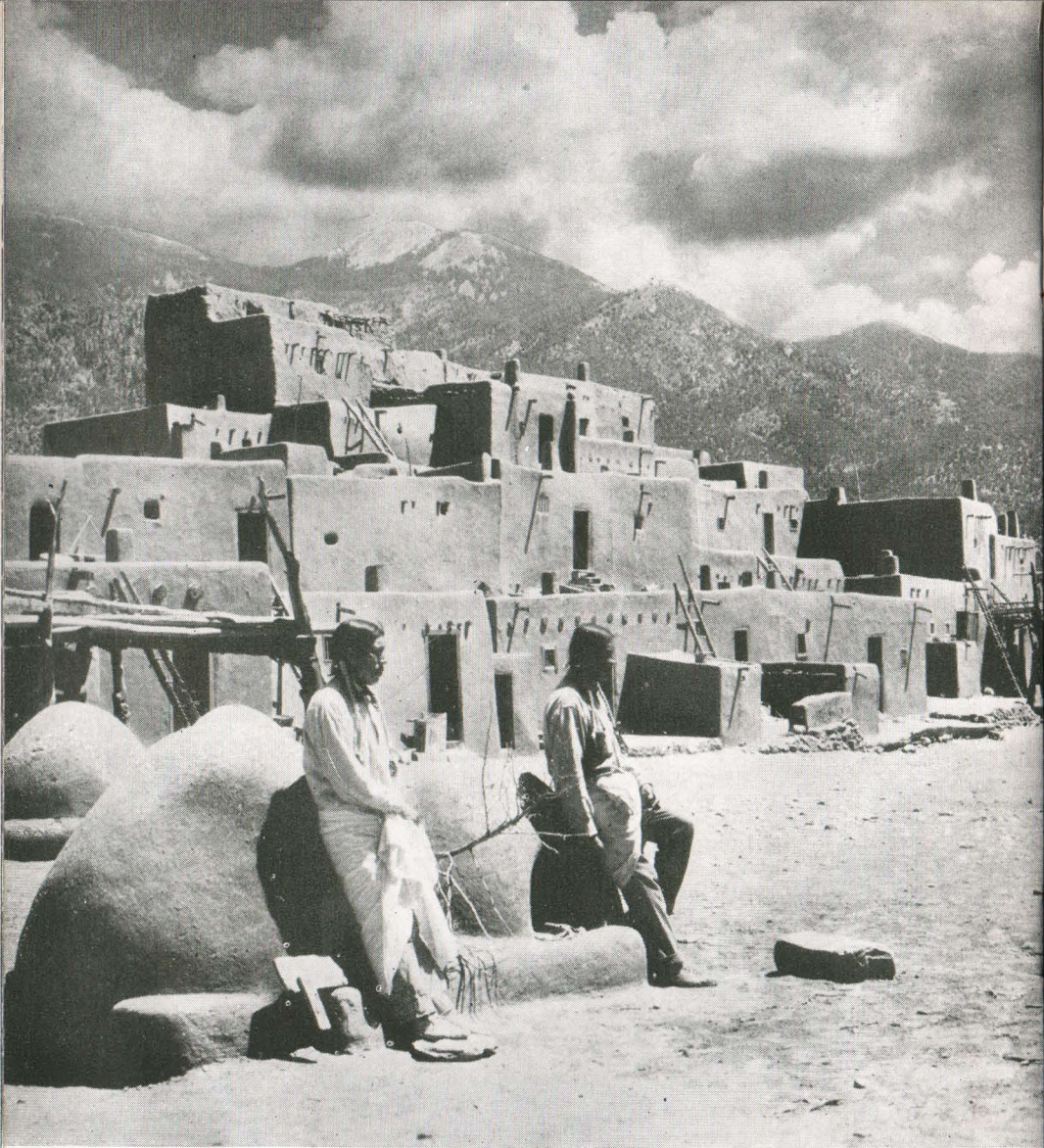
Carlsbad Caverns . . . are without a peer among the famous caves of the world in height and size of the enormous rooms and formations. Via The Scout a standard sleeper is operated daily to Carlsbad, N. M., just 22 miles from the Caverns. All-expense motor coach trip (\$9.20 including meals and tax) is now available from trainside to the Caverns and return via the Carlsbad Caverns Detour.



Scenes in Santa Fe, (above) The Governors Palace (below) La Fonda managed by Fred Harvey



Old Santa Fé . . . capital of the vast New Mexico territory since the days of the Conquistadores, reflects the quiet charm and hospitality of its early Spanish-American days. Here, facing the historic old Plaza, are the 300-year-old Palace of the Governors, and many other historical sites you'll enjoy visiting in this picturesque "City of the Holy Faith."



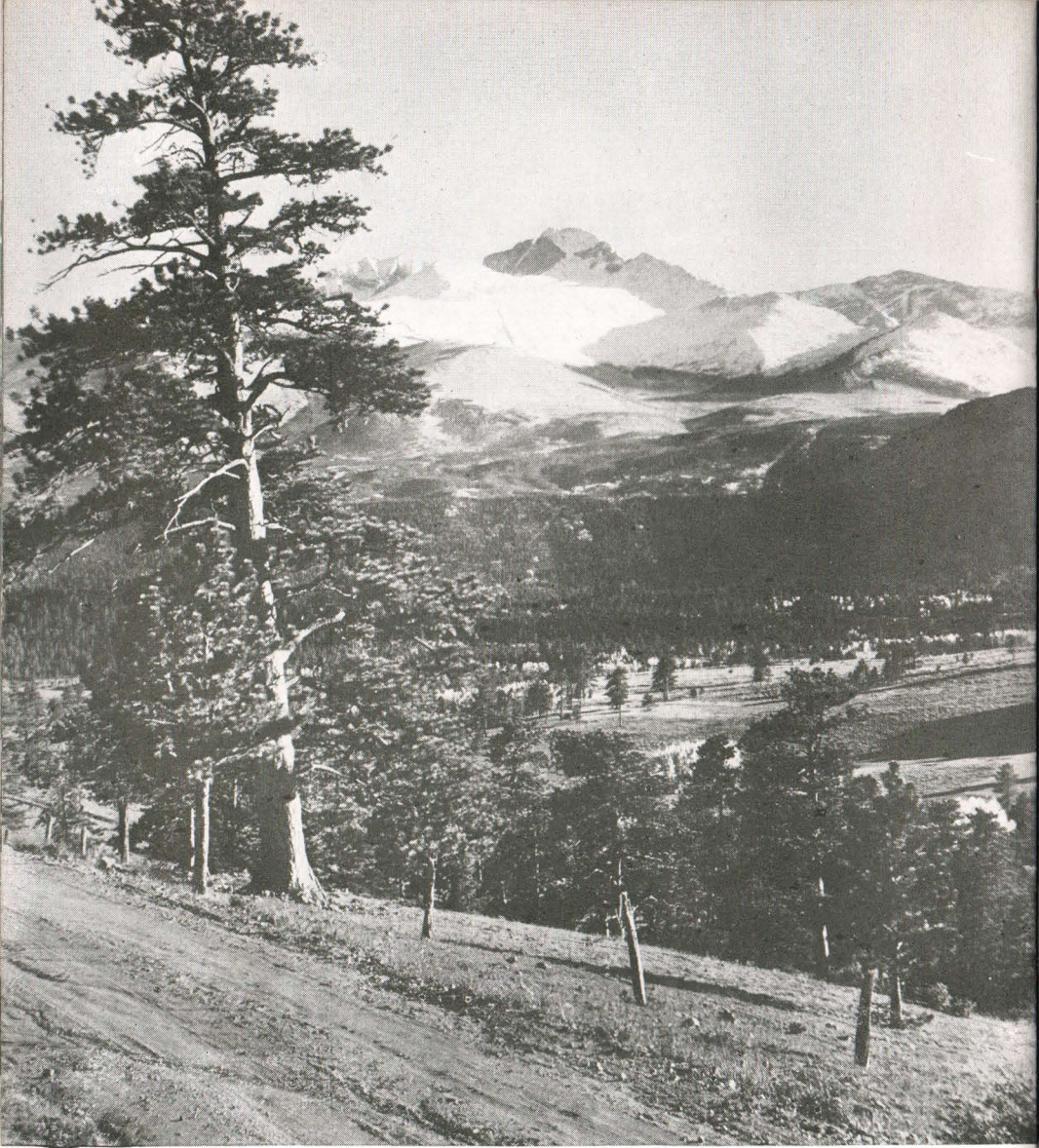
Land of Pueblos . . . Many vacation travelers delight in exploring the age-old inhabited Indian pueblos, prehistoric dwellings and primitive Spanish-American mountain villages via the Indian-detour motor cruises. (Above) Taos Pueblo, located in the mountains of Northern New Mexico, is one of the many popular stopping points on the Indian-detours.



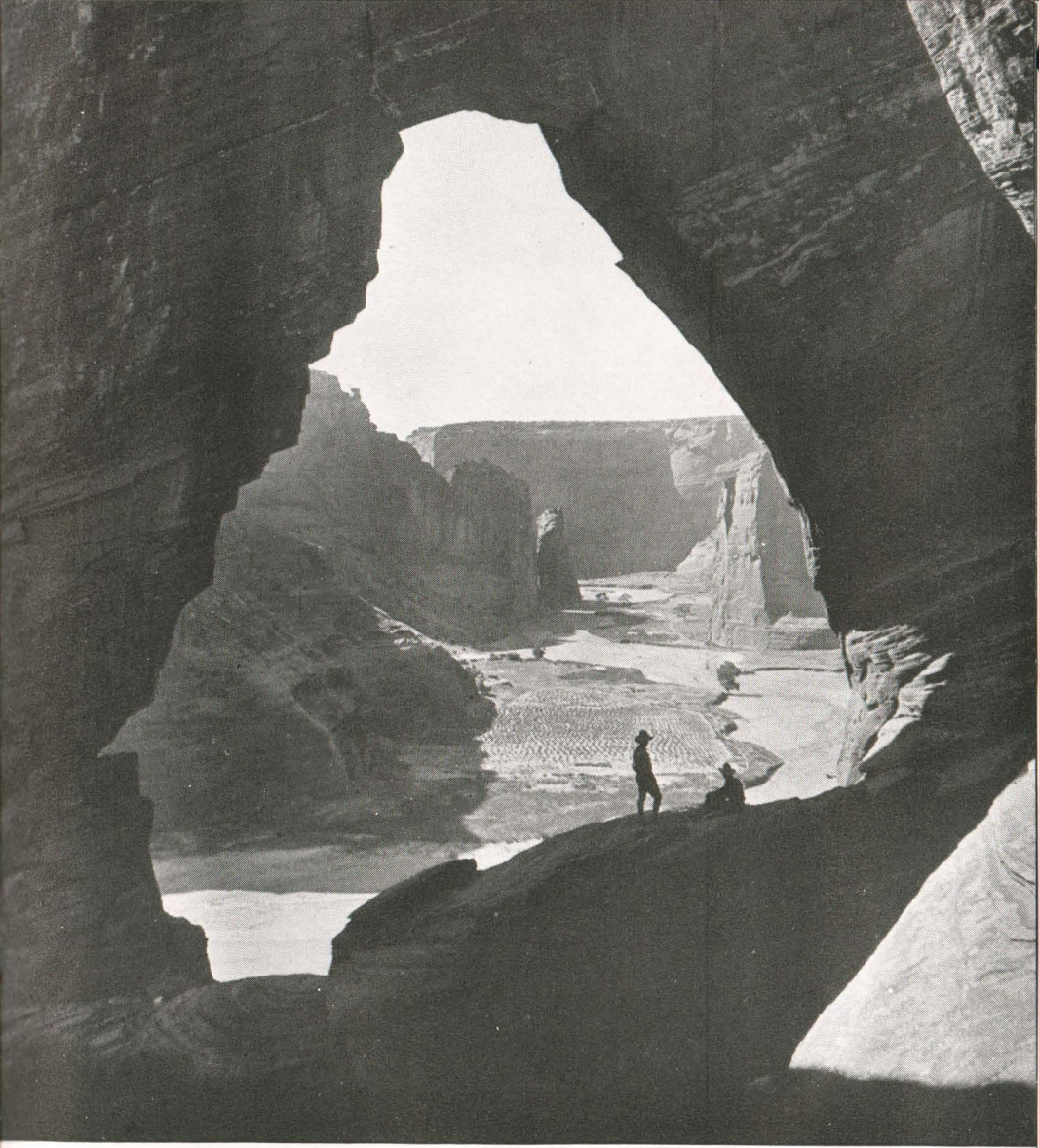
Palm Springs . . . a desert sun-drenched oasis in Southern California is the center of many popular winter ranches and resorts. (Santa Fe provides convenient year 'round service for Palm Springs via San Bernardino, California.)



Phoenix . . . the center of one of America's most popular winter playgrounds, an area containing many famous resorts and ranches flooded with warm, healthful sunshine from October to May • Throughout the year, there is swift through service between Chicago and Phoenix, Arizona, every day on the famous streamlined Santa Fe Chief.



Colorado Rockies . . . snow topped peaks, great forests, lakes and streams, vast fields of wild flowers, prehistoric ruins, picturesque mining and ghost towns, dude ranches and resorts, Denver, Colorado Springs, Pueblo, La Junta and other important points in this popular mountain playground are all easily reached via Santa Fe.



Navajo Reservation . . . land of weird rock formations and painted cliffs, north of the Santa Fe mainline, occupies 20,000 square miles of northwestern New Mexico and northeastern Arizona, and is inhabited by over 40,000 nomad Indians noted for their blanket weaving, silver crafts, and age-old religious ceremonies.



Galveston and the Gulf Coast . . . is gaining in popularity with vacation travelers. Galveston Island boasts the finest surf bathing in America and offers a variety of seacoast pleasures from boating and bathing, to big time deep sea fishing. (Above) Stewart Beach, \$500,000 playground on Galveston Island.



Texas . . . from the Panhandle to the Gulf and from the Red River to the Rio Grande has many historical and scenic attractions that are of interest to vacation travelers. (above) The San Jacinto Battleground monument near Houston, one of many historical sites that add interest and enjoyment to a Texas vacation.

Santa Fe Service

The Super Chief . . . now in daily service, 39 $\frac{3}{4}$ -hour all-private-room and suites streamliner between Chicago and Los Angeles. Extra Fare.

The Chief . . . Famous fast daily streamlined train between Chicago and Los Angeles. Standard Pullmans only. Carries daily, year 'round Pullman between Chicago and Phoenix; also between Chicago and San Diego. Coast-to-Coast daily Pullmans via *The Chief* between Los Angeles and New York in connection with the New York Central *20th Century Limited* and Pennsylvania *Broadway Limited*. Also between Los Angeles and Washington connecting with Baltimore & Ohio *Capitol Limited*. Extra Fare.

Texas Chief . . . daily Pullman-Chair Car Streamliner, between Chicago and Galveston. Courier-Nurse Service. Non-extra fare.

El Capitan . . . now in daily service, 39 $\frac{3}{4}$ -hour all-chair-car (coach fare) streamliner between Chicago and Los Angeles. Courier-Nurse service. Extra Fare.

The Grand Canyon . . . Providing swift daily service between Chicago, Grand Canyon, Los Angeles, and San Francisco. Modern Pullmans and chair cars. Courier-Nurse Service. Non-extra fare.

California Limited . . . A favorite with western travelers for over 50 years. Pullmans and chair cars. Daily service. Non-extra fare.

The Scout . . . Popular daily train between Chicago, California and the southwest. Pullmans and chair cars. Carries daily Pullman for Carlsbad, N. M. (Carlsbad Caverns). Courier-Nurse Service. Non-extra fare.

San Diegan . . . modern stainless steel streamliner. Four daily schedules between Los Angeles and San Diego. Non-extra fare.

Golden Gate . . . modern stainless steel streamliner. Twice daily, coordinated rail-bus service between Los Angeles and San Francisco. Non-extra fare.

The Chicagoan and Kansas Cityan . . . modern stainless steel streamliner, daily between Chicago, Kansas City, Topeka, Wichita and Oklahoma City. Carries through Pullmans and chair cars for Fort Worth and Dallas (on connecting train south of Oklahoma City). Non-extra fare.

The Tulsan . . . modern stainless steel streamliner, daily between Kansas City and Tulsa, with through cars between Tulsa and Chicago. Non-extra fare.

The Ranger . . . daily train between Newton, Kansas and Oklahoma City, Fort Worth, Houston, Galveston. Through Pullman and chair car between Galveston and Chicago in connection with *The Scout* between Newton and Chicago. Non-extra fare.

Fred Harvey meals are an outstanding feature of Santa Fe travel



Ask

any one of these Santa Fe Passenger Traffic Offices for helpful information about vacation travel, train service, and rail fares, as well as descriptive literature featuring Santa Fe territory.

Albuquerque, N. M.	Santa Fe Station	Minneapolis 2, Minn., 938 Northwestern Bank Bldg.	
Alhambra, Calif.	106 W. Main St.	New Orleans 12, La., 307 Pere Marquette Bldg.	
Amarillo, Tex.	Santa Fe Bldg.	New York 18, N. Y.	500 Fifth Ave.
Atchison, Kan.	Masonic Bldg.	Oakland 12, Calif.	401 Fourteenth St.
Atlanta 3, Ga.	1314 Rhodes-Haverty Bldg.	Oklahoma City 2, Okla.	112 N. Robinson St.
Bakersfield, Calif.	Santa Fe Station	Pasadena 2, Calif.	Santa Fe Station
Beaumont, Tex.	413 Perlstein Bldg.	Peoria 2, Ill.	211 Jefferson Bldg.
Berkeley 4, Calif.	2140 Center St.	Philadelphia 7, Pa., 1114-16 Lincoln-Liberty Bldg.	
Beverly Hills, Calif.	9429 Wilshire Blvd.	Phoenix, Ariz.	102 N. First Ave.
Boston 16, Mass.	Rooms 4-5 Little Bldg.	Pittsburgh 19, Pa.	1222 Gulf Bldg.
Buffalo 2, N. Y.	1408 Liberty Bank Bldg.	Portland 5, Ore.	1201 American Bank Bldg.
Chicago 4, Ill.	179 W. Jackson Blvd.	Pueblo, Colo.	401 N. Union Ave.
Chicago 4, Ill.	238 So. Michigan Ave.	Riverside, Calif.	Santa Fe Station
Cincinnati 2, Ohio	701 Dixie Terminal Bldg.	Sacramento 14, Calif.	1000-10th St.
Cleveland 14, Ohio, 750 Union Commerce Bldg.		St. Joseph 2, Mo.	505 Francis St.
Colorado Springs, Colo.	Santa Fe Station	St. Louis 1, Mo.	296 Arcade Bldg.
Dallas 1, Tex.	1315 Commerce St.	Salt Lake City 1, Utah, 811 Continental Bank Bldg.	
Denver 2, Colo.	524-17th Street	San Angelo, Tex.	P. & S. F. Station
Des Moines 9, Iowa	601 Equitable Bldg.	San Antonio 5, Tex.	1115 Majestic Bldg.
Detroit 26, Mich.	1225 Lafayette Bldg.	San Bernardino, Calif.	Santa Fe Station
El Paso, Tex.	Sheldon and El Paso Sts.	San Diego 1, Calif.	Room 1, 426 B St.
Fort Worth 2, Tex.	808 Houston St.	San Francisco 2, Calif.	235 Geary St.
Fresno 1, Calif.	Santa Fe Station	San Jose, Calif.	28 N. First St.
Galveston, Tex.	411-22nd St.	San Pedro, Calif.	819 So. Pacific Ave.
Glendale 4, Calif.	107 So. Brand Blvd.	Santa Ana, Calif.	301 N. Main St.
Hollywood 28, Calif.	6405 Hollywood Blvd.	Santa Barbara, Calif.	29 W. Carrillo St.
Houston 2, Tex.	800 Travis St.	Santa Fe, N. M.	101 E. San Francisco St.
Huntington Park, Calif.	7136 Pacific Blvd.	Santa Monica, Calif.	430 Santa Monica Blvd.
Indianapolis 4, Ind.	311 Merchants Bank Bldg.	Santa Rosa, Calif.	217 Fourth St.
Inglewood, Calif.	314 E. Hillcrest Blvd.	Seattle 1, Wash.	The 1411 Fourth Ave. Bldg.
Kansas City 6, Mo.	1100 Baltimore Ave.	Stockton 3, Calif.	101 E. Weber Ave.
Leavenworth, Kan.	781 Shawnee St.	Topeka, Kans.	Santa Fe Bldg.
Long Beach 2, Calif.	117 Pine Ave.	Tulsa 3, Okla.	417 S. Boston Ave.
Los Angeles 14, Calif.	601 So. Hill St.	Washington 5, D. C.	525 Shoreham Bldg.
Lubbock, Tex.	Santa Fe Station	Whittier, Calif.	148 N. Greenleaf St.
Mexico City, Mex.	Bolivar 22-B	Wichita 2, Kan.	200 S. Broadway
Milwaukee 3, Wis.	401 Majestic Bldg.	Wichita Falls, Tex.	608 Staley Bldg.
T. B. GALLAHER, General Passenger Traffic Manager		Santa Fe System Lines, Chicago 4	
C. C. THOMPSON, Passenger Traffic Manager		A. T. & S. F. Ry.-Coast Lines, Los Angeles 14	
R. E. CHAPPELL, Passenger Traffic Manager		A. T. & S. F. Ry., Topeka	
A. C. ATER, Passenger Traffic Manager		G. C. & S. F. Ry., Galveston	
H. C. VINCENT, Traffic Manager		Panhandle and Santa Fe Ry., Amarillo	
G. C. LYMAN, General Freight & Passenger Agent		A. T. & S. F. Ry., Albuquerque	
T. H. MURRAY, General Freight & Passenger Agent		A. T. & S. F. Ry.-Coast Lines, Phoenix	
L. R. EVERETT, Western General Passenger Agent		A. T. & S. F. Ry.-Coast Lines, San Francisco 2	
C. E. EATON, Eastern General Passenger Agent		A. T. & S. F. Ry., New York City 18	

