







Texas Chief



Pullman-Chair Car Streamliner Serving
Chicago, Kansas City, Wichita, Oklahoma
City, Ft. Worth, Dallas, Houston, Galveston



Santa Fe, a partner and booster of Texas and the southwest since 1880, presents the *Texas Chief* for swift, daily streamlined service between the Great Lakes and the Texas Gulf Coast.

With the *Texas Chief*, Santa Fe, long a popular route of travel between Chicago, Kansas City, Kansas, Oklahoma and Texas, brings finer accommodations and swifter rail service to this fast growing territory and its busy cities. A special Pullman is also carried from Chicago to Tulsa, moving on connecting train from Kansas City to Tulsa.

Designed to provide a popular style of travel, this Diesel-drawn streamliner carries comfortable private-room and section sleeping car accommodations as well as

roomy chair cars with specially designed reclining seats and leg rests.

Like other famous Santa Fe streamliners, the *Texas Chief* carries a colorful lounge car and a modern dining car serving Fred Harvey meals.

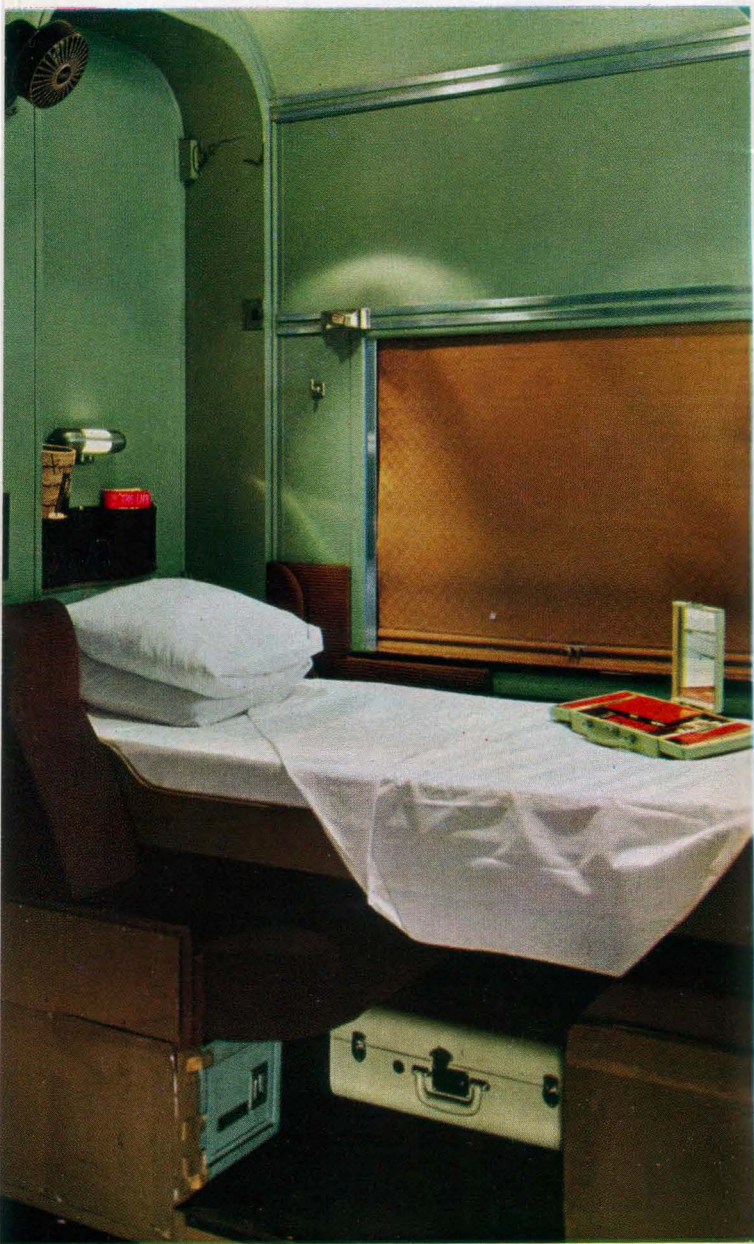
Many new travel innovations are included in the modern cars on this swift streamliner. In the *Texas Chief* dining car and lounge car, appropriate programs of musical recordings are played for your listening pleasure. In all Pullman rooms and in chair cars regularly assigned to the *Texas Chief*, there are radio and recorded musical programs.

You'll like the attentive crew, including a capable Courier-Nurse, aboard this friendly streamliner, so plan your next trip between Chicago, Kansas City, Kansas, Oklahoma and the Lone Star State via the *Texas Chief*.

R. J. Henderson

General Passenger Traffic Manager

Santa Fe System Lines



The Roomette—prepared for nighttime occupancy

ROOMETTES are the popular style of private room accommodations for one person, and the *Texas Chief* offers both the standard roomette and the duplex-roomette.

This compact, yet comfortable room, has a restful lounge seat for daytime travel which is converted into a full-length bed at night.

There are complete toilet facilities, washstand and mirror cabinets, clothes locker, luggage rack and other conveniences.

The standard roomette is slightly larger and costs a trifle more than the duplex-roomette.



Chicago, with its fine civic and entertainment attractions, as well as giant industries, acres of stockyards and manufacturing plants, is popular with business, convention and pleasure travelers. • *Texas Chief* service brings this famous Windy City hours nearer to Texas and the southwest.



The Bedroom with center wall folded back showing part of adjoining room

BEDROOMS are a preferred accommodation for two persons.

This comfortable private room contains a sofa (which is transformed into a bed at night), upper berth, toilet facilities, full-length mirror, hinged table and folding wash basin.

By opening the partition between the rooms, the adjoining bedroom can be turned into one large room—thus providing family and business groups of three or four persons with a delightfully convenient and comfortable way to travel.



Kansas City, historic starting point of early western trails, is today an important center of trade and commerce for the progressive middle west. • The *Texas Chief* provides swifter service for travel between Kansas City, Oklahoma and Texas points.



The Compartment showing daytime arrangement

COMPARTMENTS are one of the finer types of sleeping car accommodations designed for occupancy by two or three persons.

This modern sleeping room has a sofa seat and movable lounge chair for daytime enjoyment. A bed with upper berth provides nighttime comfort.

Decorated in soft pastel tones and modernly lighted, the compartment has complete toilet facilities, clothes locker, luggage space, shoe box and other travel conveniences.

Compartments may be occupied en suite with other room accommodations.



Wichita, one of the nation's largest milling centers, is also an important livestock and packing point, and a rapidly growing industrial city. • At the center of the *Texas Chief* route, travelers will enjoy this modern streamliner for service to and from Wichita.



*The Drawing Room with only one bed
made ready for nighttime occupancy*

DRAWING ROOMS are the largest of all sleeping room accommodations and can be comfortably occupied by three or four persons.

This spacious room has a long sofa seat and two movable lounge chairs for daytime relaxation. At night there are two lower beds also an upper berth.

An enclosed toilet annex, large wardrobe, ample luggage storage, shoe box and many other facilities add to the pleasure of these comfortable rooms.

Drawing Rooms can be occupied en suite with other private rooms.



Oklahoma City, state capital and largest city in Oklahoma, has a modern, impressive skyline that can be seen from the windows of the *Texas Chief*. • This busy city in the heart of a highly productive oil country is served by the swift northbound and southbound *Texas Chief*.



The Lounge at center of the train

THE LOUNGE CAR on the *Texas Chief* gives passengers an opportunity for relaxing and leg stretching that is a distinctive feature of fine train travel.

In this beautiful car is a cocktail bar, writing desk, and a profusion of current reading material.

The lounge chairs and divans have been well placed for conversation or reading, and there are tables for a friendly bridge game or refreshments served by a courteous attendant.

Recorded musical programs played softly so as not to interfere with reading or conversation is another feature of the *Texas Chief* lounge.



Fort Worth—lively center of Texas' big livestock and packing industry is an important gateway to the vast West Texas area. • The *Texas Chief* brings a swifter more convenient service for travelers going to and from this friendly city.





Texas Chief, crossing northern Illinois near the end of its swift 26¼-hour run from Galveston to Chicago

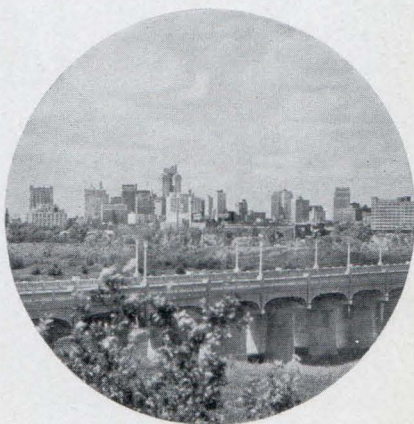


Dining Car features Fred Harvey meals

MEALS on the *Texas Chief* are served in a spacious streamlined dining car.

This colorful dining room-on-wheels featuring delicious Fred Harvey meals, served in a traditionally fine style, has made dining car service an outstanding part of travel via Santa Fe.

Recorded musical programs add a pleasant note to dining aboard the modern *Texas Chief*.



Dallas—one of the principal industrial cities of the southwest ranks outstanding as a spot cotton market, manufacturing center for wash dresses and millinery, as well as an important insurance headquarters. • The *Texas Chief* serves Dallas via convenient motor coach connections to and from train-side at Fort Worth.



The Section type accommodations made up for daytime travel

SECTION accommodations, consisting of comfortable berths, are included in the equipment of the modern *Texas Chief*.

The lower berths are restful beds easily accessible for nighttime travel. The upper berths each have their own ladder, as well as windows in the upper part of the car.

Tastefully decorated in soft colors and offering many new improvements, sections are a popular type of accommodation for travelers making trips on a limited budget.

Section accommodations are only available from Chicago to Kansas City and Tulsa.



Houston, named for the great Texas hero General Sam Houston, is the largest city in the Lone Star State and fastest growing American city. • This important oil center and busy world port is overnight from Chicago via the swift *Texas Chief*.



Interior of comfortable Texas Chief chair car

COACH fare travelers on the *Texas Chief* enjoy a luxury of comforts in new-type reclining seat chair cars.

These modern cars have only 44 seats instead of the usual 52, which gives more room for each passenger

There is more room too, for luggage as well as larger dressing rooms.

Wide, individual non-fogging windows, modern lighting, and even-temperated air-conditioning, recorded music and radio programs, all add pleasure to economy travel in modern and colorful *Texas Chief* chair cars.

No reservations are necessary for chair car travel on this popular streamliner.



Galveston, port and playground of the southwest, boasts the finest surf bathing in America. • This sunny island resort off the Texas coast is the southern terminal of the *Texas Chief*.



Chair cars are roomy and restful for daytime travel

RIDE MASTER is the name of the new chair car seats on the *Texas Chief*.

These seats are made of foam rubber cushions molded to body contours with a specially designed leg rest.

The leg rest can be readily pulled from under the seat, and the back of seat reclined to give bed-like comfort for day or night travel.

There is a light focused directly on your book or magazine, and an ash tray at your finger tips to give you all the comforts of your favorite easy chair.

The Ride Master seat gives a luxury of comfort for nighttime travel





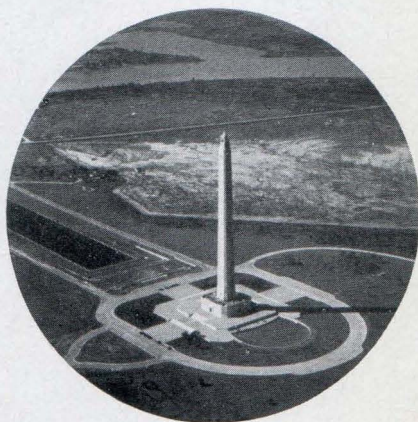
The Ladies' Dressing Room in one of Texas Chief Chair Cars

DRESSING rooms, spacious and comfortable, are another feature of chair car travel on the *Texas Chief*.

The ladies' dressing rooms are practically boudoirs-on-wheels, complete with large mirrors, dressing tables and comfortable chairs.

In the men's dressing rooms are deep divans, roomy chairs, ample washstands and outlets for electric razors.

To keep these cars in clean condition there is a chair car attendant in addition to a porter. These attendants also assist passengers with their luggage and help in any other way they can be of service.



Texas has many colorful cities and unusual historic attractions that add interest and enjoyment to a visit to this famous state.

- The San Jacinto Battleground near Houston, with its giant monument (above), is one of many historical sights along the route of the *Texas Chief*.

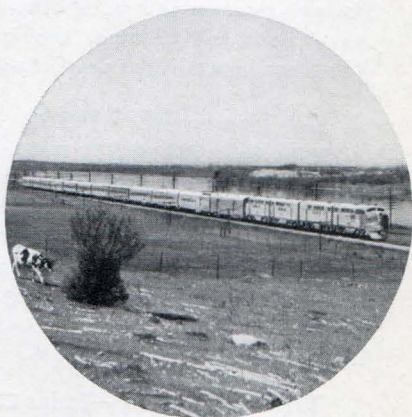


The friendly capable Courier Nurse

COURIER - NURSES bring their friendly service to travelers aboard the *Texas Chief*.

These capable young women, registered nurses all, lend a helping hand to mothers traveling with babies and children . . . aid the sick and aged . . . and assist all other travelers requiring their services.

Besides their professional ability each Courier-Nurse can point out scenes along the route of the *Texas Chief*—for all have facts about the cities and attractions along the Santa Fe from the Great Lakes to the Gulf of Mexico.



The *Texas Chief* route between the Great Lakes and the Gulf spans the fertile fields of Illinois, Missouri and Kansas; crosses through the oil fields and refineries of Oklahoma and down the center of Texas from the Red River to the Gulf Coast.



*other fine
Santa Fe trains ...
Chicago, Kansas City,
Kansas, Oklahoma
and Texas*

CHICAGOAN-KANSAS CITYAN

Trains 11 and 12

This popular streamliner provides daily daytime service between Chicago, Kansas City, Topeka, Wichita and Oklahoma City, with through Pullmans and chair cars providing overnight service to and from Fort Worth and Dallas.

Streamlined chair cars, Pullmans, parlor observation car, lounge car and dining car serving Fred Harvey meals.

THE TULSAN—Trains 211 and 212

Swift daily streamliner between Kansas City and Tulsa making direct connections at Kansas City with the *Chicagoan-Kansas Cityan* streamliner, providing through service between Chicago, Kansas City and Tulsa.

Through chair car and parlor observation car between Tulsa and Chicago, also chair cars and dining car between Tulsa and Kansas City.

Trains 5 and 6

A favorite with southwest travelers, this comfortable train operates daily between Kansas City and Galveston, making direct Chicago connections at Kansas City. Through Pullman daily between Chicago and Galveston. Dining car, serving Fred Harvey meals, between Chicago and Kansas City, also between Kansas City and Fort Worth. Chair car service all the way.

THE ANTELOPE—Trains 27 and 28

Overnight Pullman and chair car train between Kansas City, Wichita and Oklahoma City.

The Antelope makes connections at Kansas City with *The Grand Canyon*, providing convenient service for travel between Chicago, Kansas City, Wichita and Oklahoma City.

