

Eastbound on the Super Chief  
a real Indian in full tribal  
costume rides with you across his  
native New Mexico, enhancing  
your trip with tales of his people  
and their magic land.

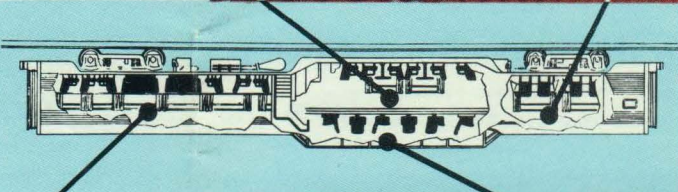


The real pleasure of traveling is the fun you enjoy.  
... the scenic view from the Dome Lounge  
—top of the Super next to the stars.  
... the friendly companionship of the spacious Main Lounge.  
... the intimate cocktail in the Lower Lounge.  
... and then, the highlight of every Super Chief  
trip, dinner in the Turquoise Room!

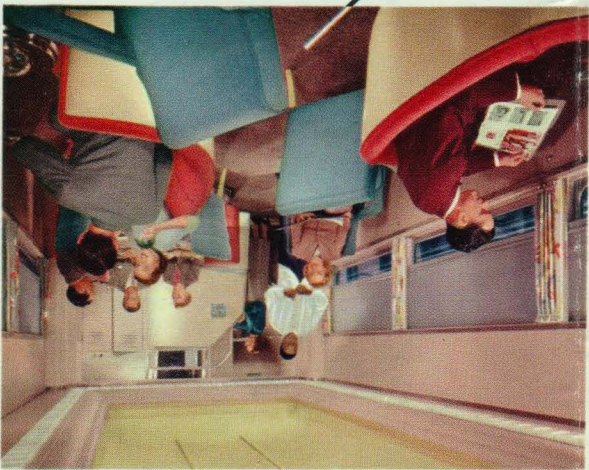


## Featuring the the Pleasure Dome Lounge Car Turquoise Room

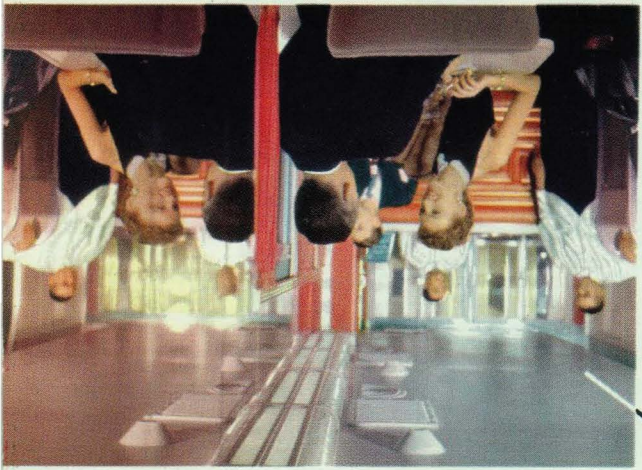
Top of the Super is the scenic dome  
lounge with 8 swivel chairs and  
8 sofa seats. A wonderful spot for a  
daylight or starlight view of the  
colorful Super Chief route.



The Main Lounge—spacious  
and comfortable.



The Lower Lounge—colorful,  
intimate, inviting.



The Turquoise Room is the most distinctive dining room  
on rails with private service for as many as 9 persons.  
When not reserved, all passengers may enjoy  
dining and refreshments in this delightful room.



### Special Service aboard the Super Chief

**Music and train announcements**—Each room of the Super Chief has radio, music and train announcements. This feature can be controlled by you—as you like it and when you want it! The lounges and dining car carry a special selection of music that adds to the enjoyment of dining and relaxing aboard this modern streamliner.

**Valet Service**—Passengers desiring to have their clothing pressed will find the attendant in the Forward Lounge available to render this service.

**News Reports**—Late news reports and stock bulletins are telegraphed to the Super Chief. Current magazines are available in the lounges and latest issues of newspapers are placed aboard the train along the route.

A Fred Harvey Indian Museum representative is aboard for a few hours between La Junta and Albuquerque to exhibit and sell Indian handicraft.

Family fares are available for passengers desiring to travel via Super Chief.

Your Santa Fe passenger representative or travel agent will be glad to arrange details of your trip and make reservations on the Super Chief. Call or write him today.

R. T. Anderson  
General Passenger Traffic Manager  
Santa Fe System Lines, Chicago, Ill.



### NOW

#### Coast-to-Coast Pullmans via Super Chief

In connection with the New York Central RR 20th Century Limited and the Pennsylvania RR Broadway Limited, through Super Chief Pullmans operate daily between New York City and Los Angeles. Also through Pullman between Washington and Los Angeles in connection with the Baltimore & Ohio RR.

# Super Chief



All-private room  
Chicago-Los Angeles  
Streamliner



*a trip you'll always remember*

**a train you'll never forget**

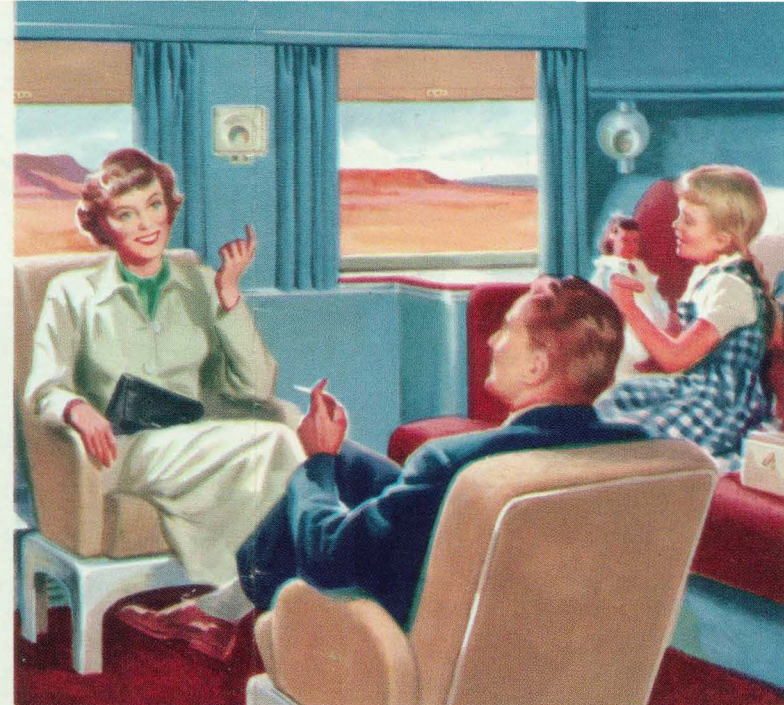
Just wait 'til you ride it! From the flanges on the wheels to the top of the Pleasure Dome, the Super Chief is designed to provide service and accommodations that will pamper you every mile of the way, between Chicago and Los Angeles. And now there are Super Chief Pullmans between New York, Washington and Los Angeles, making it easy for you to enjoy a coast-to-coast trip. Extra fare—and worth it!



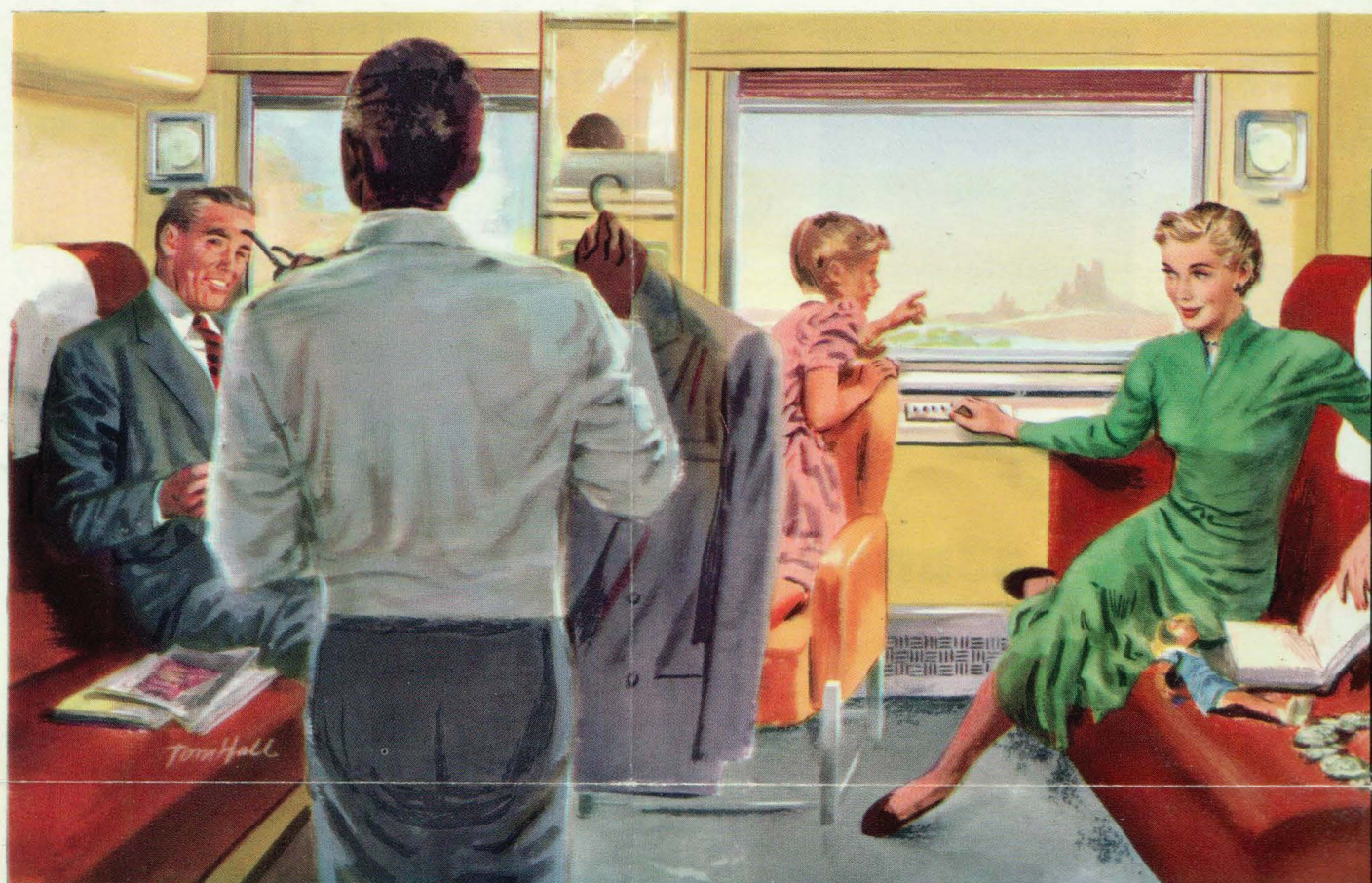




# Time is Pleasure aboard the Super Chief



The Drawing Room is a roomy, comfortable accommodation including three restful beds and complete toilet annex with large enclosed wardrobe.



Your trip aboard the Super Chief is planned for pleasure from the minute you step aboard.

For privacy you have a choice of accommodations from spacious suites to comfortable roomettes.

For friendly companionship and room to move about, there are three delightful lounges.

For meals there are few to compare with the famous Fred Harvey cuisine on the Super Chief.



Super Chief Suites afford a luxury of space for lounging and sleeping. This is the Bedroom-Compartment Suite that provides four comfortable beds and two separate toilet facilities. Other types of suites are available.



The Forward Lounge is an easy-to-relax spot that adds to the enjoyment aboard the Super Chief.

Fred Harvey food has always been well chosen, attractively prepared and carefully served. This famous service reaches its finest expression in the beautiful "dining-room-on-wheels" of the Super Chief.



This beautiful Observation Lounge supplements the Forward Lounge and Pleasure Dome Lounge in providing the generous extra space for relaxation and "moving around" that is a distinctive advantage of traveling by rail.



The Roomette provides complete comfort for one person with privacy of toilet facilities, control of temperature and ample space for luggage and clothes.

The Bedroom with two comfortable beds and enclosed toilet facilities is one of the most popular Super Chief accommodations.

