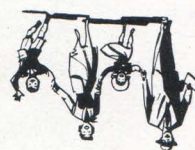


FAMILY FARE PLAN. Take the family along on the more-to-see Santa Fe route and let us show you how to reduce the cost of your trip. For details see any Santa Fe ticket office or travel agent.



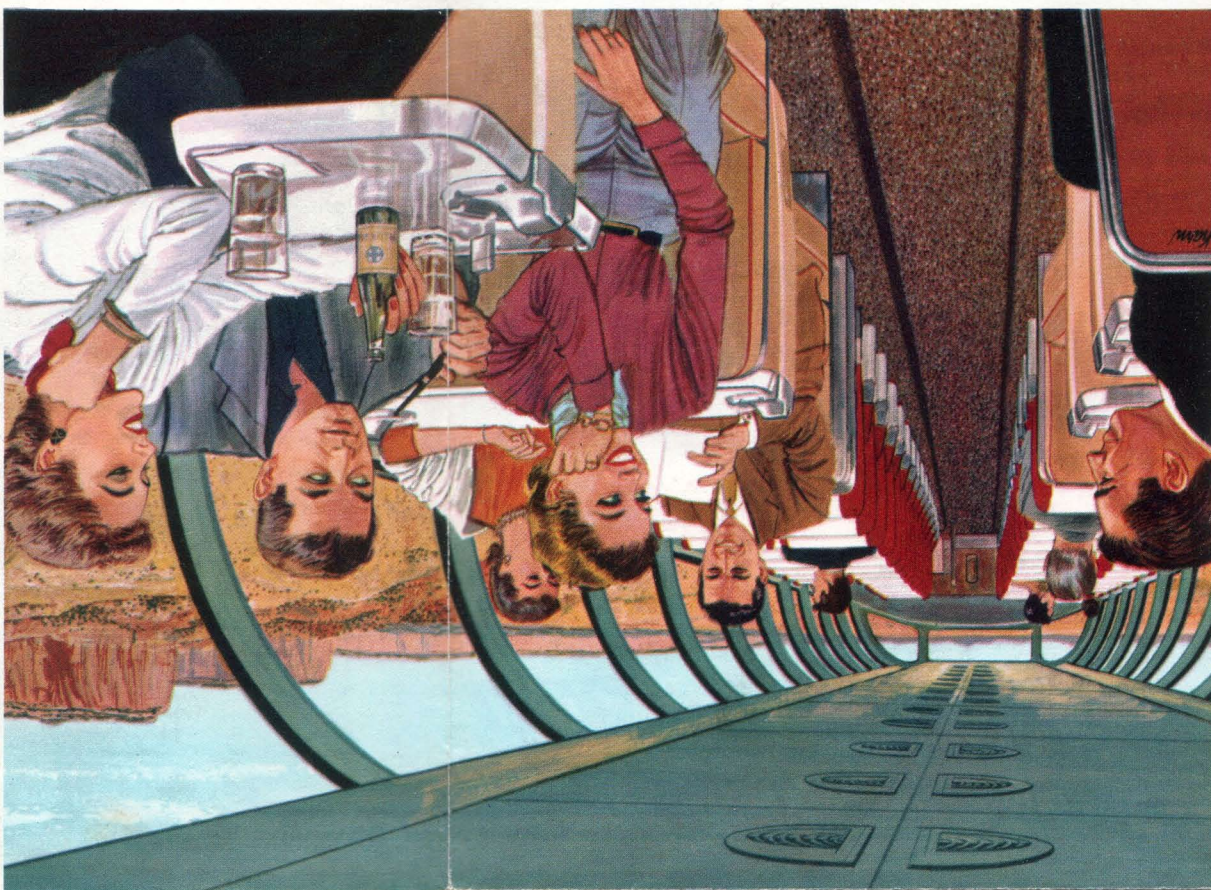
*Tops in Fun...
Tops in Travel...*



Here is the "dream car" of them all—the new full-length Dome Lounge, truly the most beautiful railroad car in the world. The upper sun deck of sofa seats, angled for better viewing, accommodates 57 passengers, with a convenient refreshment lounge at the rear for 18 more. And there's room for 10 in the colorful cocktail lounge on the lower level. You'll enjoy the intimate atmosphere and the unique Indian decor of this modern lounge.

FULL-DIMENSION VIEWS FROM FULL-LENGTH DOME CARS

New "Big Dome"

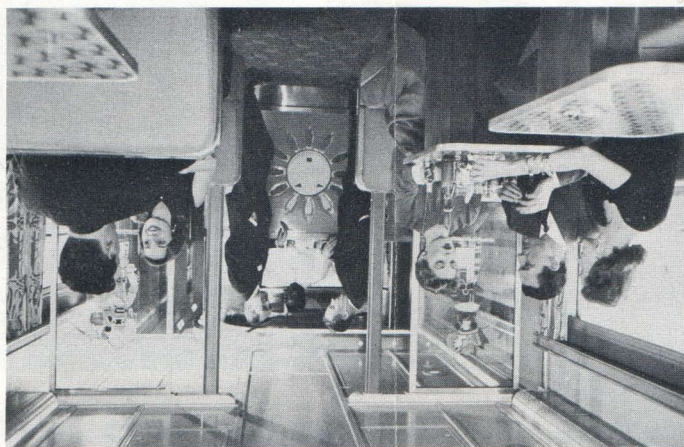


Enjoying sun-painted scenery from the Dome by day . . . dreaming under the stars at night . . . or visiting with friends in the smart lower lounge . . . you'll have many hours of fun and relaxation in this wonderful new car.

PLANNED FOR PLEASURE—Note angled seats for full-window views; convenient refreshment lounge at rear of Dome. All designed to give you the utmost in travel pleasure.

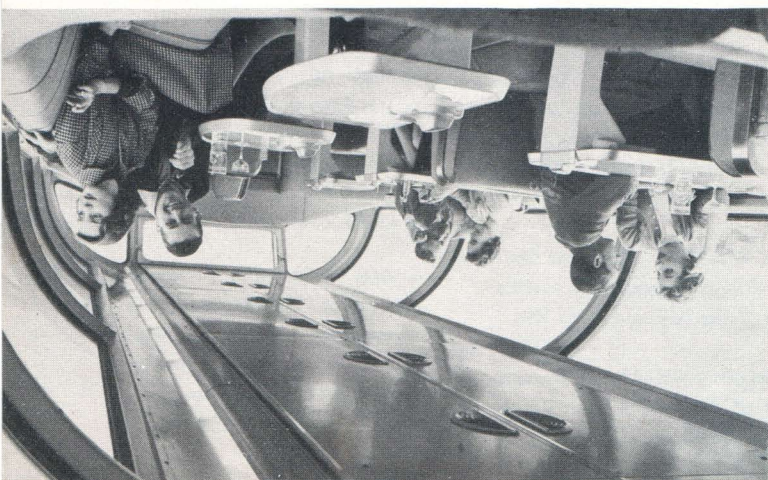
In complete contrast with the spacious big dome is the intimate, colorful lower lounge. Indian designs decorated in glass and hammered on metal plaques—the colors are truly South-west . . . Mesa Red, Zuni Turquoise, Pueblo Beige.

FUN in the Lower Lounge



FUN in the Dome Lounge

At the rear of the upper sun dome is a comfortable refreshment lounge for convenient service during the day and evening. At night, indirect lighting with a starlight effect gives an appealing charm to lounging in the big dome under the stars.



San Francisco

Chief

Santa Fe

Santa Fe

New! San Francisco Chief

NEW LUXURY STREAMLINER VIA THE ROMANTIC INDIAN COUNTRY
BETWEEN CHICAGO AND SAN FRANCISCO . . .
WITH THROUGH SERVICE BETWEEN NEW ORLEANS-HOUSTON-SAN FRANCISCO

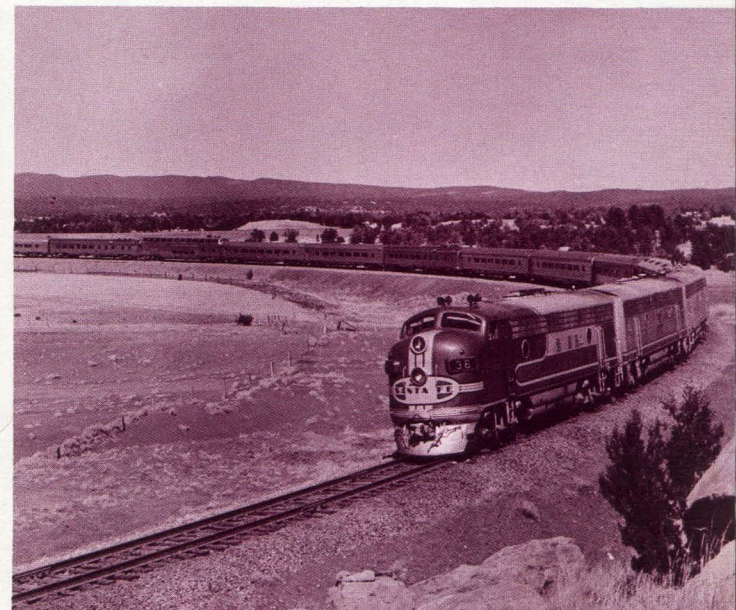
Now . . . to that storied city of the Golden Gate . . . a brand new way to go. Santa Fe all the way. On the new *San Francisco Chief*!

Aboard this newest Santa Fe streamliner you follow the famous route of the Chiefs. Through the fabulous Indian Country in daylight—most colorful part of America!

Chair car or Pullman, you ride in smooth, swift, streamlined luxury. You ease yourself into an angled sofa seat in the new full-length Dome with its big picture windows. You have fun, make new friends in the intimate cocktail lounge below.

Every modern travel convenience is yours. Radio and recorded music throughout the train. Courier-Nurse service. Fred Harvey food. Easy connections for Yosemite National Park.

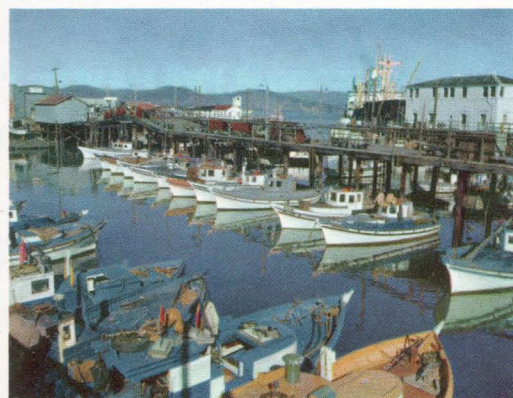
On your next trip to San Francisco, ride a great new Chief . . . the *San Francisco Chief*!



San Francisco Chief running through the Indian Country of New Mexico.



Cable car on California street.



Crab fleet at Fisherman's Wharf.



Grant Avenue in Chinatown.



Exciting Sights to See!

GOLDEN GATE BRIDGE—Longest single suspension span in the world, 4,200 feet. Gateway to the wine country of Sonoma Valley, and the Redwood Empire.

LATIN QUARTER—Onetime Barbary Coast, famous for Italian foods, *bocce* ball and night life.

FISHERMAN'S WHARF—Interesting views of the fishing fleet. Excellent seafood restaurants with waterfront atmosphere.

TELEGRAPH HILL—Topped by Coit Tower, which provides wonderful panoramic view of the bay and surrounding cities. Many artists' studios and millionaires' homes located here.

SAN FRANCISCO-OAKLAND BAY BRIDGE—World's largest bridge—8¼ miles long. Takes you through an island tunnel in mid-bay. Gateway to the High Sierra.

CHINATOWN—The largest Chinese settlement outside of Asia. Fascinating bazaars, temples, res-

taurants. One of the city's outstanding attractions.

NOB HILL—In the central part of the city. Famous hotels, beautiful views, cable cars.

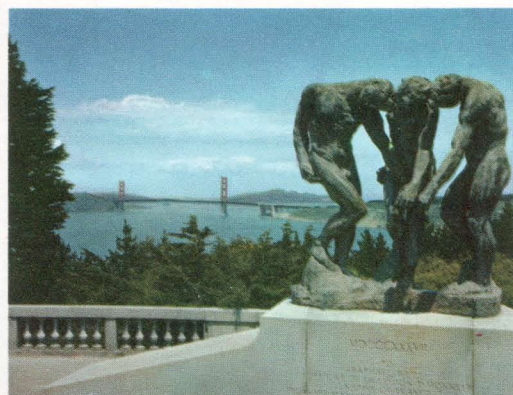
GOLDEN GATE PARK—Covers 1,013 acres. Includes an aquarium, museum, planetarium, arboretum, stadium, Japanese tea garden, music concourse, perpetual flower beds, animals, and 16 lakes.

SEAL ROCKS—Just offshore from famous Cliff House. Inhabited from August to May by sea lions.

MUIR WOODS—A half hour from San Francisco where you stroll in a forest of trees 300 feet high and 2000 years old.

PORTSMOUTH SQUARE—Historic plaza where the Vigilantes in Gold Rush days of '49 hanged men from building fronts.

OPERA HOUSE—Where the United Nations were organized and where great operas are sung in September and October.



Lincoln Park overlooking Golden Gate.



San Francisco's shoreline and sandy beaches.

No Place Like It in the World! The Romantic

City of the Golden Gate

FROM NOB HILL TO FISHERMAN'S WHARF,
YOU FEEL THE SPECIAL CHARM
OF SAN FRANCISCO

It's more than a city. It's an experience. An experience you can get nowhere else, for there's no other place in the world like San Francisco.

In fact, you begin to think of San Francisco as a little world in itself.

You find old world atmosphere in its sidewalk flower stands and its houses built into hillsides. You find new world finery in its smart shops and modern buildings.

You find the Orient in its Chinatown, Europe in its Latin Quarter, Mission Dolores and Presidio. In its Golden Gate Park, there are flowers, shrubs and trees from all parts of the world. Ships of the seven seas dock at its Embarcadero. And its restaurants feature everything from Won Ton soup to Shish Kebab to Enchiladas . . . just name your dish.

You find it all here, the whole world. But beneath it, and through it, holding it all together, is a prevailing spirit of gayety and excitement and charm—the special charm of San Francisco.

You, too, will find it more than just a city. You'll probably find it, as did mystery writer Leslie Ford, "the most exciting city known to man."

ONE OF AMERICA'S MOST FAMOUS
SCENIC WONDERLANDS

Yosemite

NATIONAL PARK

One of the most interesting side trips you can make on your way to San Francisco via the *San Francisco Chief* is the short jaunt off the main line to Yosemite National Park.

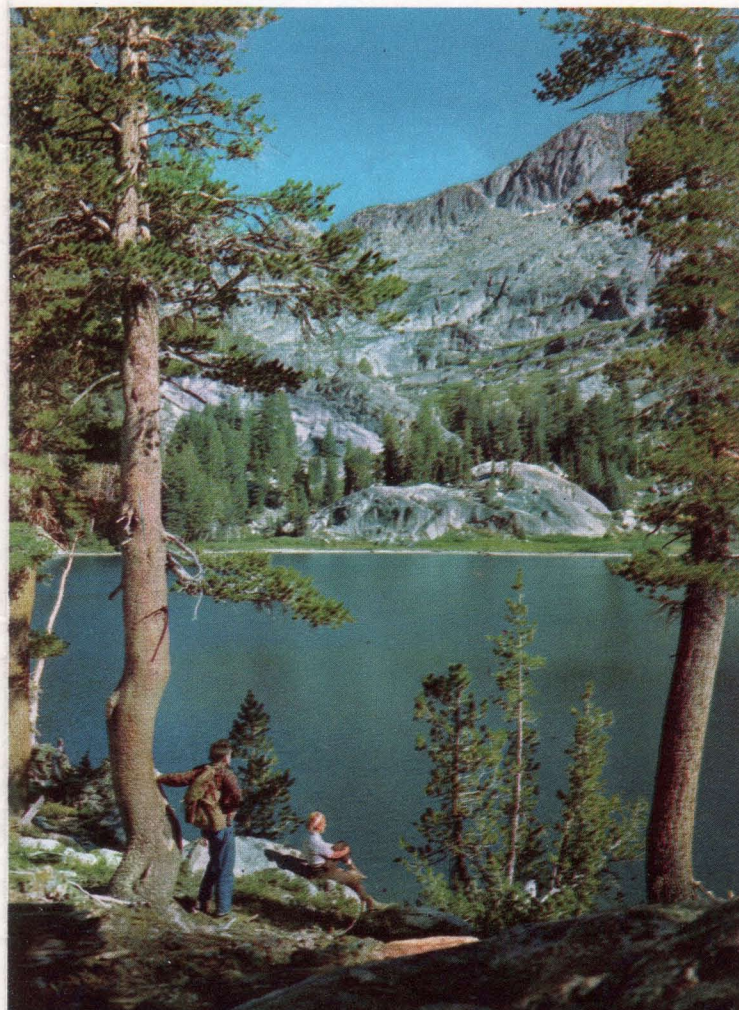
There you see the compellingly beautiful natural wonders of Yosemite Valley, the mile-wide gorge created by the force of glacial ice some 30,000 years ago.

It's a trip that everyone should take—and one you'll treasure in memory.



(top) Yosemite Falls — 2425 feet high.

(bottom) Autumn scene — entrance to Yosemite Park.



One of many glacier-fed lakes in Yosemite.

Sight-Seeing Trips

IN YOSEMITE NATIONAL PARK

The park's transportation system operates daily sightseeing trips in open top cars to the Mariposa Grove of Big Trees, Glacier Point and around the floor of Yosemite Valley.

There are also a number of special tours available, as well as hiking and saddle trips to High Sierra camps. For vacationers, there are a variety of hotel and housekeeping accommodations. For details, just consult any Santa Fe ticket office or travel agent.