

Grand Canyon

NATIONAL PARK
Northern Arizona

Grand Canyon

NATIONAL PARK
Northern Arizona





Rainbow

AMERICA'S GRAND CANYON

"The Grand Canyon of Arizona fills me with awe. It is beyond description—absolutely unparalleled throughout the wide world. Let this great wonder of nature remain as it now is. Do nothing to mar its grandeur, sublimity and loveliness. You cannot improve on it. But what you can do is keep it for your children, your children's children and all who come after you, as the one great sight which every American should see."

Theodore Roosevelt

So spoke a great explorer and world traveler — a man who knew the earth and all its wonders, and therefore had a right to make comparisons. Theodore Roosevelt considered the Grand Canyon "absolutely unparalleled throughout the world," and in that verdict countless other experienced travelers have enthusiastically concurred.

GRAND CANYON NATIONAL PARK

GRAND CANYON NATIONAL PARK is in northern Arizona, one of the most picturesque and colorful regions of North America. The Park contains 1,009 square miles—an area nearly as large as the state of Rhode Island.

To the south and north, the Park boundaries follow the canyon rims closely, surrounded by the Kaibab National Forest. The western boundary extends to Grand Canyon National Monument, including Havasu Canyon—"the land of the sky-blue water". Eastward the Park area runs to the mouth of the Little Colorado River and the Navajo Reservation, within which lies the Painted Desert.



the epic of the Canyon





The Epic of the Canyon

The Grand Canyon of Arizona is a gigantic chasm 217 miles long, 4 to 18 miles wide and a mile deep.

At its bottom, a mighty river, the Colorado, rushes to the sea.

Rising from its depths are whole ranges of mountains, their tops only slightly below the rim of the gorge. Over the rock temples and into the depths of the chasm spreads a sea of ever-changing colors.

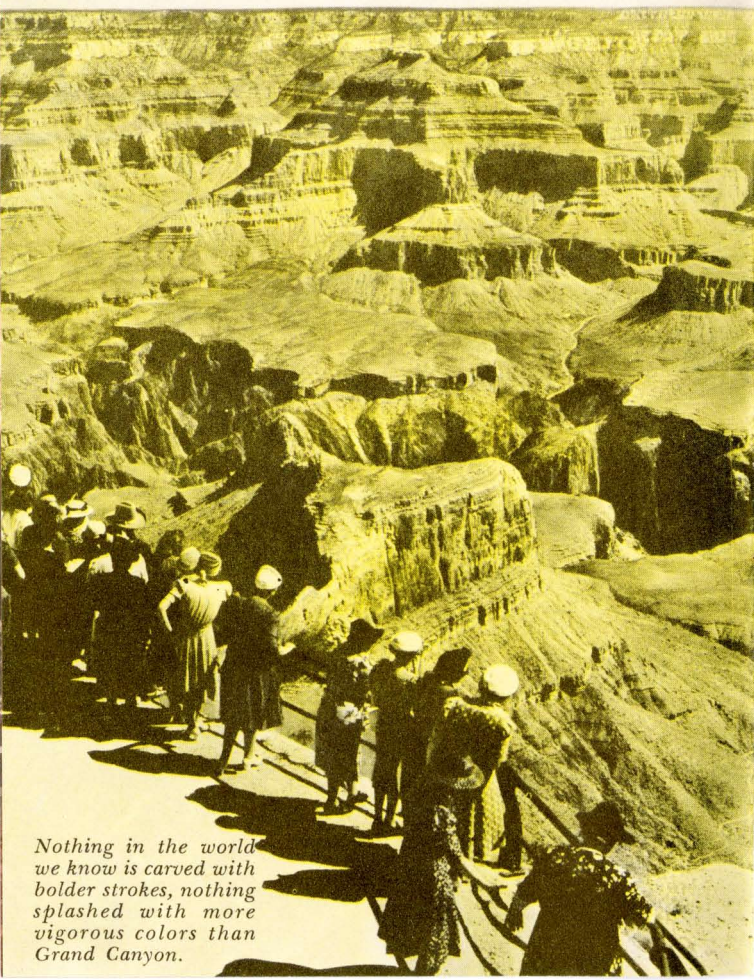
People who have seen the Grand Canyon know the futility of trying to describe it. It slashes a wilderness plateau for over two hundred miles; it is fed by scores of side canyons which are only less incredible than itself. Only the merest fraction of it has ever been trodden by the foot of man. It imprisons one of America's great rivers so completely as to make it invisible from above, except where here and there the sun flashes on the rock-torn rapids.

After your Santa Fe Pullman has delivered you within a stone's throw of El Tovar Hotel or Bright Angel Lodge, your first impulse is to stroll over to the Rim for your first glimpse of the Grand Canyon.

Suddenly and without warning it is upon you. The earth stops short. Beyond is a realm of indescribable colors.

What was that description of the Grand Canyon you had read somewhere? No matter. The Canyon is not the same now. As the moments pass, you realize it is never the same for a very long time. The sun has shifted. The colors have altered. The Canyon is a kaleidoscope, which never rests and never repeats.

By day the Grand Canyon is the home of molten color; by moonlight it is a blue mystery. From above, it is an immeasurable abyss. From within, it dwarfs man and animal. Always, in whatever mood, it grips and humbles and uplifts — for here is the ultimate in silent grandeur and beauty.



Nothing in the world we know is carved with bolder strokes, nothing splashed with more vigorous colors than Grand Canyon.

Father Sky and Mother Earth

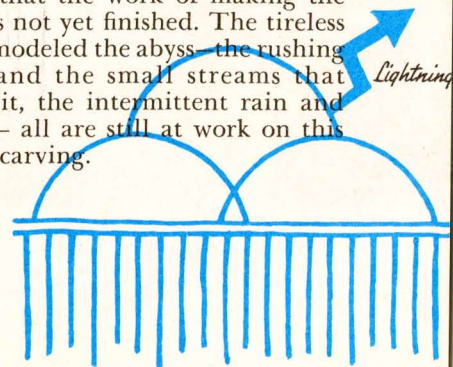
a million years at your feet

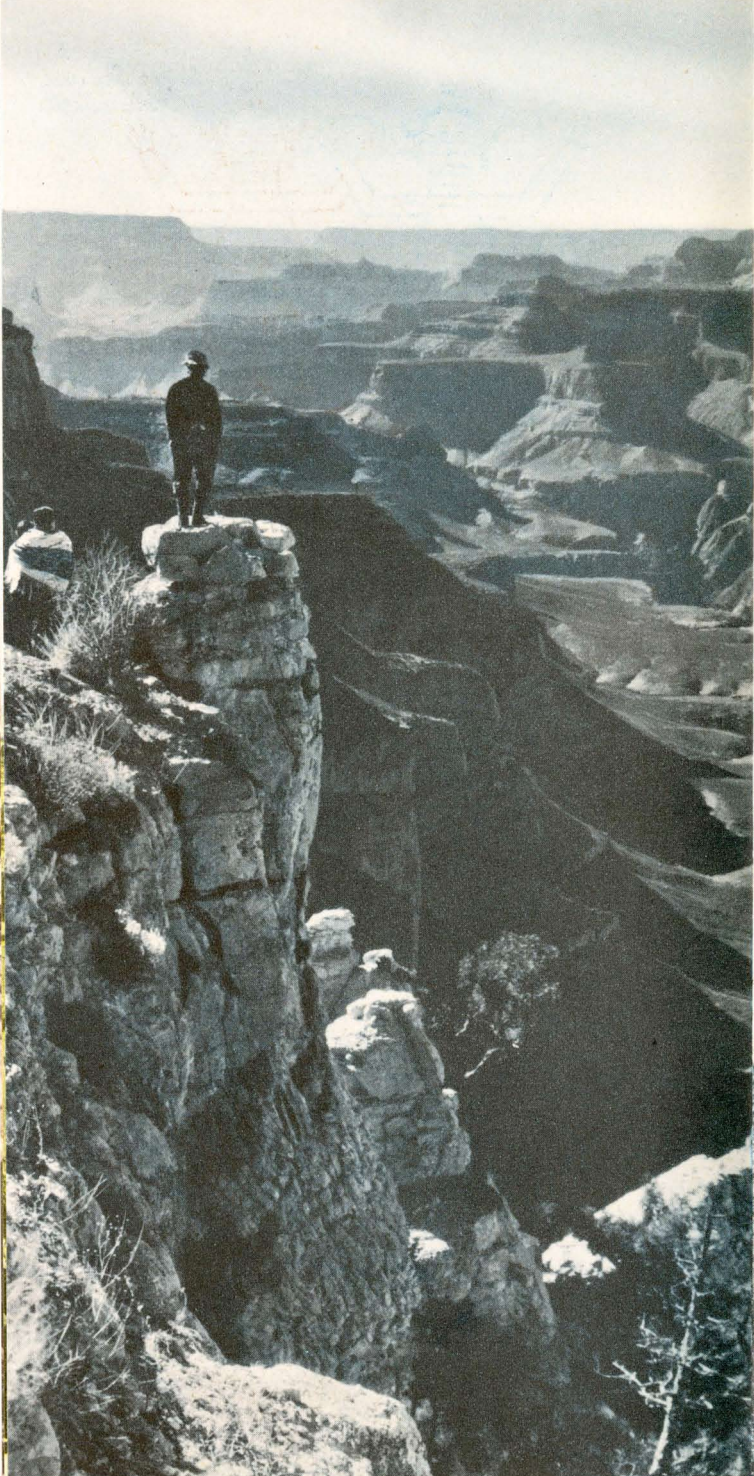
The Grand Canyon is the world's most spectacular illustration of erosion—of the combined action of a great river; of rain, wind and the prying fingers of frost, in sculpturing the surface of the earth. The results of erosion are familiar to us all; the roadside gully and this greatest of all chasms are, in principle, identical.

One of the attractive features of a Grand Canyon visit is the chance to become an amateur geologist under the most favorable conditions, for scientists claim that the earth's own story is more completely revealed in the walls of the Grand Canyon than in any other one area in the world.

As you stand in awe on the brink of the great chasm, or find your way down the inner trails, pause to reflect that the work of making the Grand Canyon is not yet finished. The tireless forces that have modeled the abyss—the rushing torrent below and the small streams that descend to join it, the intermittent rain and snow and frost — all are still at work on this incredible earth-carving.

Clouds and Rain





A million years ago, perhaps more, waters were wearing away these rocks, winds were blowing against these crags. Before fish, before reptiles, before mammals, there was a Grand Canyon.

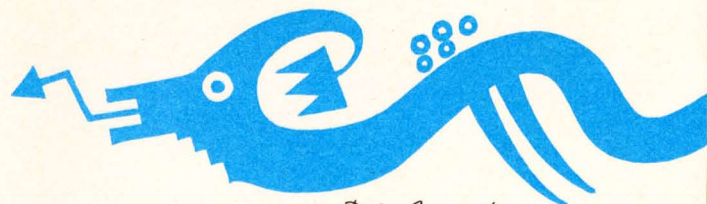
For aeons the Colorado River has been wearing away the Canyon walls. In the recesses of the inner gorge, it is still cutting its way downward — perhaps at the rate of a tiny fraction of an inch each year. And since the river at the foot of Bright Angel Trail is still nearly 2,500 feet above sea-level, the deepening and widening of the gorge seems destined to be in process for millions of years to come.



Sunflower

year-round Canyon vacations

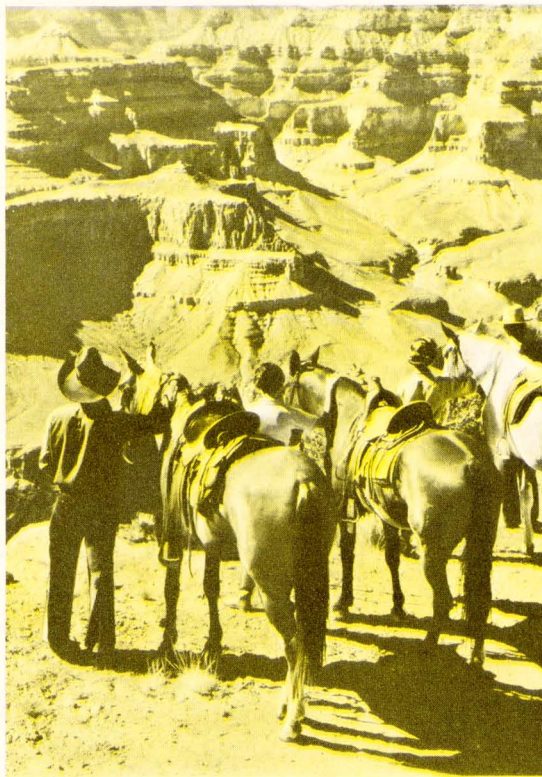
You can enjoy a Grand Canyon outing at any season. The high altitude (7,000 feet) and southern latitude of the South Rim insure cool weather in summer and a preponderance of warm days in winter. The mountain air is invigorating, the nights are crisp and on most days there is an abundance of Arizona sunshine.



Rain Serpent



Seemingly changeless, yet ever-changing . . . from sunup to sunset, through clear and stormy weather the Canyon is an ever-changing panorama.



Riders on the Rim look down a mile to a brown ribbon deep among the rocks—the Colorado River.



*Birds from
Mimbres Pottery*

SPRING brings cool, sunny days. Canyon trails and bridle paths beckon to those who enjoy life in the saddle.

SUMMER days are bright and warm, summer nights are delightfully cool.

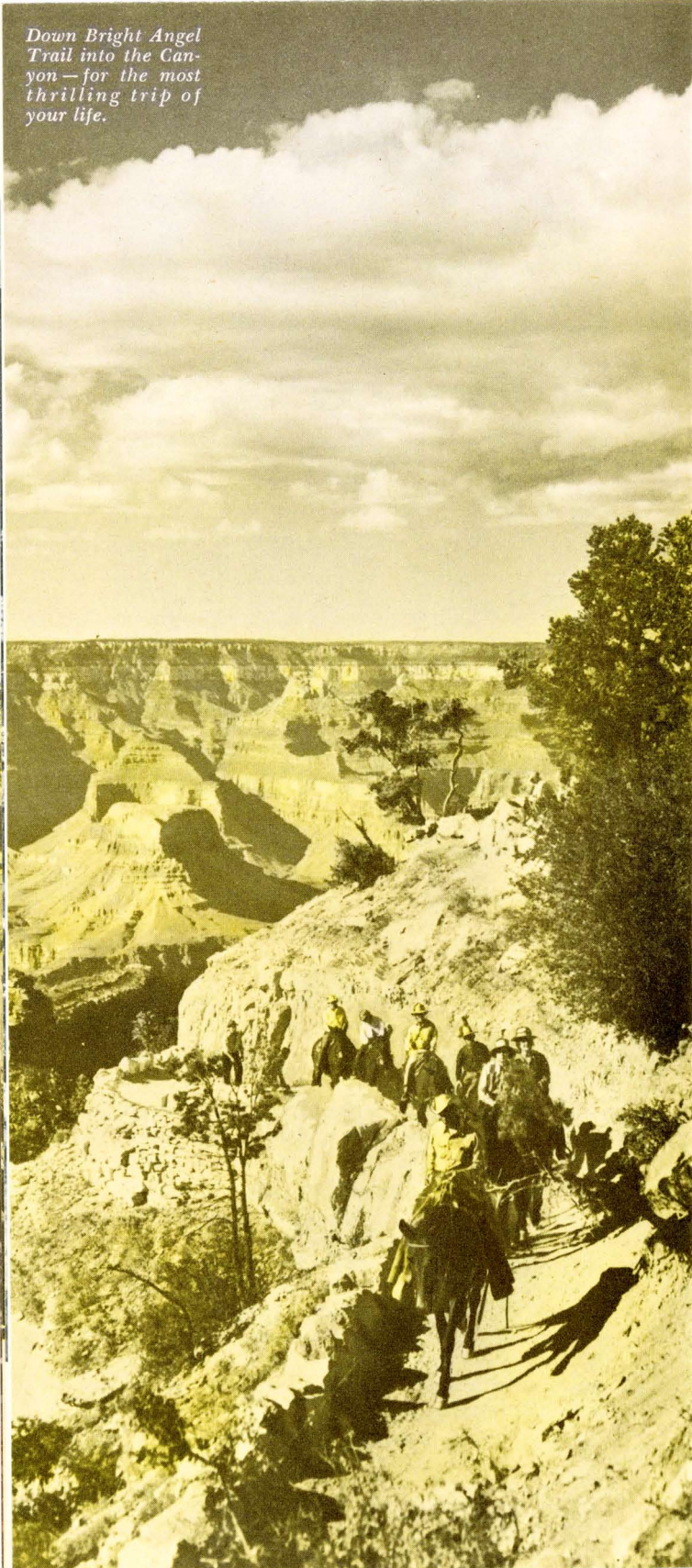
FALL brings chilly evenings, but the days are clear and sunny — with colorful hues upon all sides.

WINTER comes with crisp, tangy days and with occasional snows along the Rim to add beauty and majesty to the chasm.

Each Grand Canyon season has its own special attraction and charm. Come any time you like.

The Canyon is more than a great spectacle; more than an interesting stop-over or side-trip. It is an ideal mountain vacation spot — the center of a whole fascinating region waiting to be explored.

Down Bright Angel Trail into the Canyon—for the most thrilling trip of your life.



How long does it take to "see" the Grand Canyon? As the Park Rangers say, "It all depends." Some visitors see in the first hour all they are ever likely to see. Others stay a week or a month and come again the next year for more, still discovering new wonders, still finding new thrills.

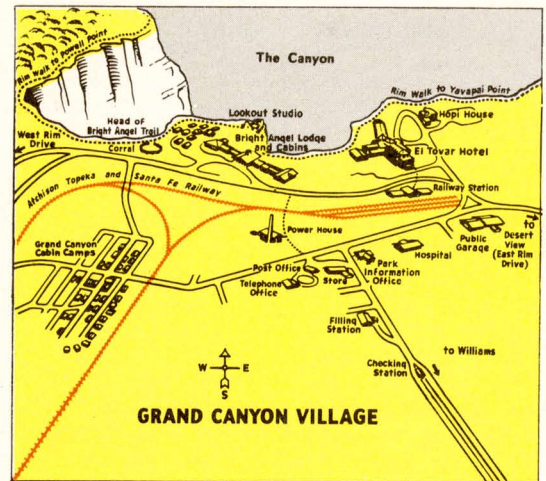
A single day spent at the Canyon is decidedly worth while. But for the fullest enjoyment, go there as you would to any other vacation spot—for the whole exhilarating, inspiring, relaxing experience.



Canyon Friends

seeing the Grand Canyon

First, of course, the Canyon should be seen from the innumerable observation points jutting out from the South Rim. Excellent motor roads, foot trails and bridle paths present view after view of the chasm's varied panorama.



Grand Canyon Village on the South Rim offers all facilities for a brief or extended visit, centering around El Tovar Hotel and Bright Angel Lodge and Cabins.



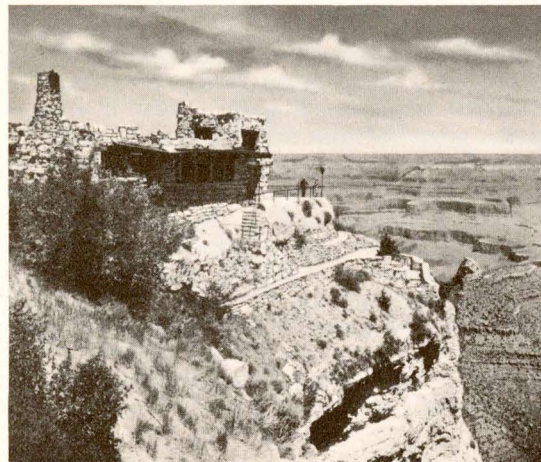
Surrounded by Kaibab National Forest, Grand Canyon National Park offers a wide variety of scenic attractions and points of interest in addition to the spectacle of the Canyon itself. On this map you will see how Santa Fe tracks extend right to the South Rim. From your Grand Canyon Pullman you are only a few steps away from El Tovar, Bright Angel Lodge and starting points for Rim Drives and Trail Trips.

THE GRAND CANYON RIM DRIVE

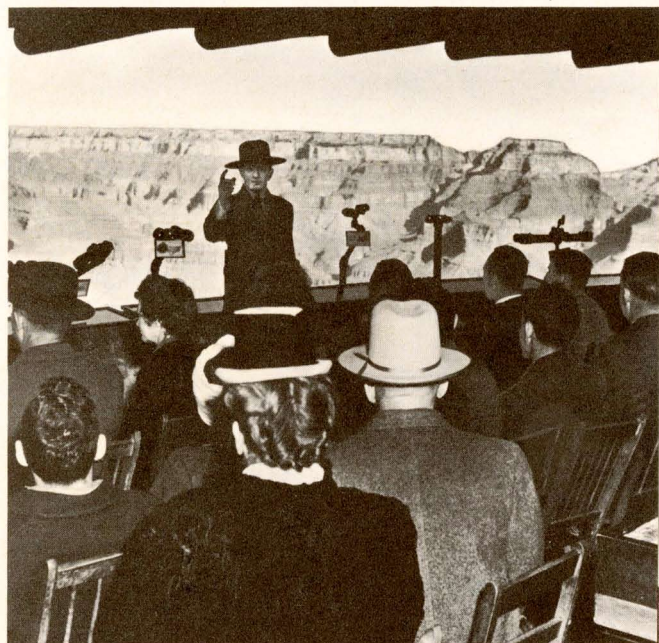
This famous motor tour of the South Rim is the one sightseeing trip which every visitor should take. For nearly seventy miles, your sight-seeing car follows picturesque roads through fragrant forests of pine and juniper, emerging at frequent intervals upon startling Canyon views.

HERMIT'S REST

Heading westward from the hotels, the tour includes Trail View, Hopi, Mohave, and Pima Points — each offering its own superb view — and finally, Hermit's Rest. The latter, a unique cliff-house built of Canyon boulders, with its rustic lounge, great fireplace and observation porch, is an attraction in itself.



Unusual observation stations offer fascinating views of points of interest in the Canyon.

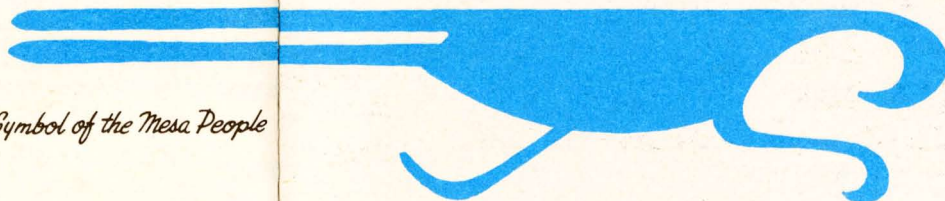


At many observation stations lectures are given by members of the National Park Service staff.



Comfortable sightseeing cars make it easy to see the main Canyon attractions on carefully-planned outings and complete tours.

Bird Symbol of the Mesa People

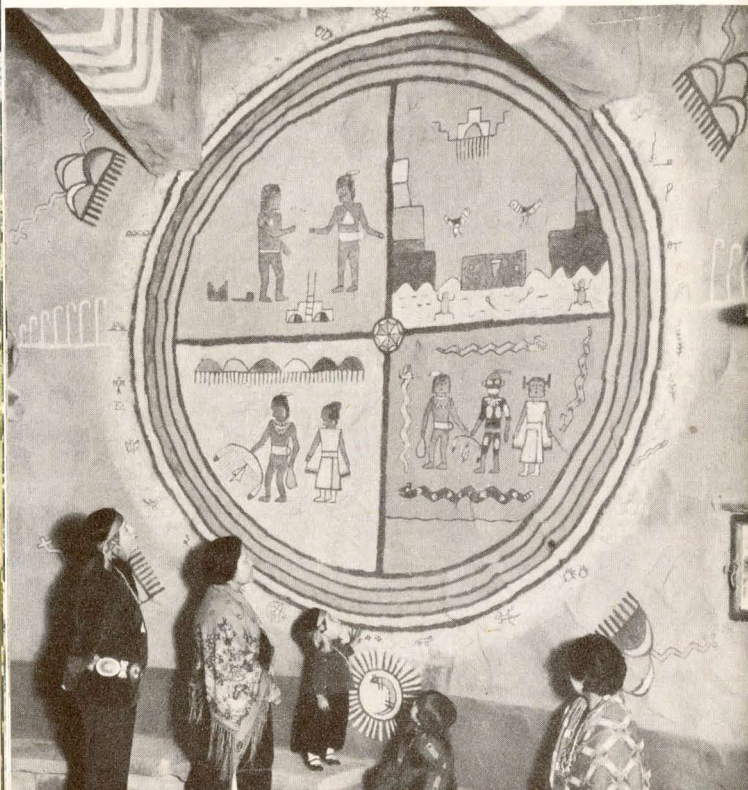


THE WATCHTOWER AT DESERT VIEW

After luncheon the tour heads eastward over the Desert View Road. Stops are made at Yavapai Observation Station and at Moran and Lipan Points. The climax of this intriguing excursion is The Watchtower at Desert View, a faithful re-creation of the strange towers erected by the ancient inhabitants of the Southwest many centuries ago.

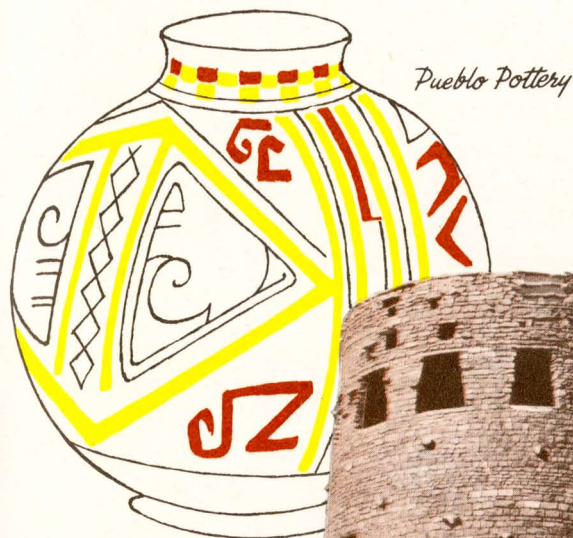
Built of native stones on the brink of the chasm, The Watchtower rises from a huge foundation of green-stained Canyon boulders. At its base is a low round Kiva, a reproduction of the ancient ceremonial chambers of the Pueblo Indians.

Hopi paintings at The Watchtower are superb examples of native art forms.

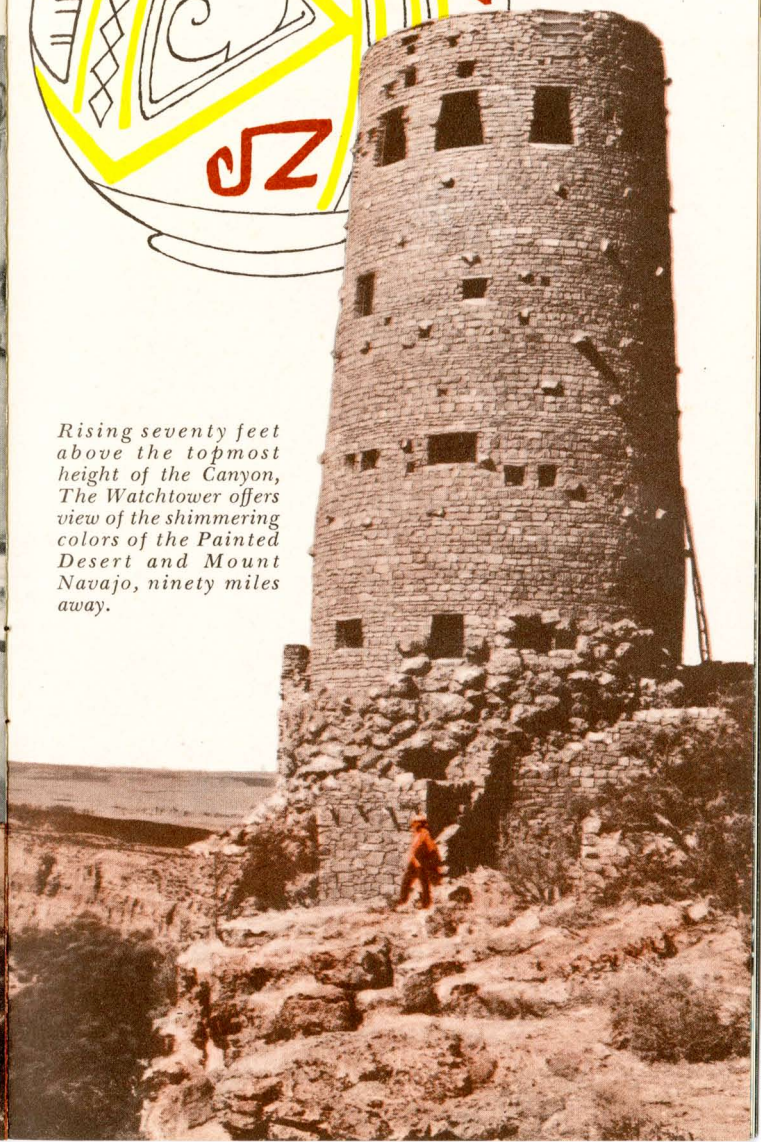


On the walls of the Tower and Kiva are a number of actual specimens of Indian pictographs — drawings and carvings, many centuries old.

From the top of The Watchtower, there is a wonderful view that embraces vast expanses of the Grand Canyon, the Painted Desert and the Kaibab National Forest.



Rising seventy feet above the topmost height of the Canyon, The Watchtower offers view of the shimmering colors of the Painted Desert and Mount Navajo, ninety miles away.





exploring inner-Canyon trails

To be best understood and most fully enjoyed, the Grand Canyon should be seen from both top and bottom — from within as well as from without. No able-bodied visitor should see the spectacle from the Rim and leave willingly without going down one of the inner-canyon trails. Exploring the Canyon on these magnificent trails — built by Government Engineers and sited for beauty as well as safety — is a memorable adventure. The descent is made on muleback in groups led by experienced Fred Harvey guides.

DOWN BRIGHT ANGEL TRAIL TO THE COLORADO RIVER

From Rim to River, and back, every turn in the historic Bright Angel Trail opens up new vistas, each seemingly more spectacular than the one before. About half-way down, a brief stop is made at a little oasis called the Indian Gardens. Then the trail stretches out upon the Tonto Plateau and presently heads downward through the Granite Gorge to the rocky banks of the hidden river. After a pleasant interlude for luncheon and rest, the journey back to the Rim is made in easy stages.

TWO-DAY TRAIL TRIP TO PHANTOM RANCH

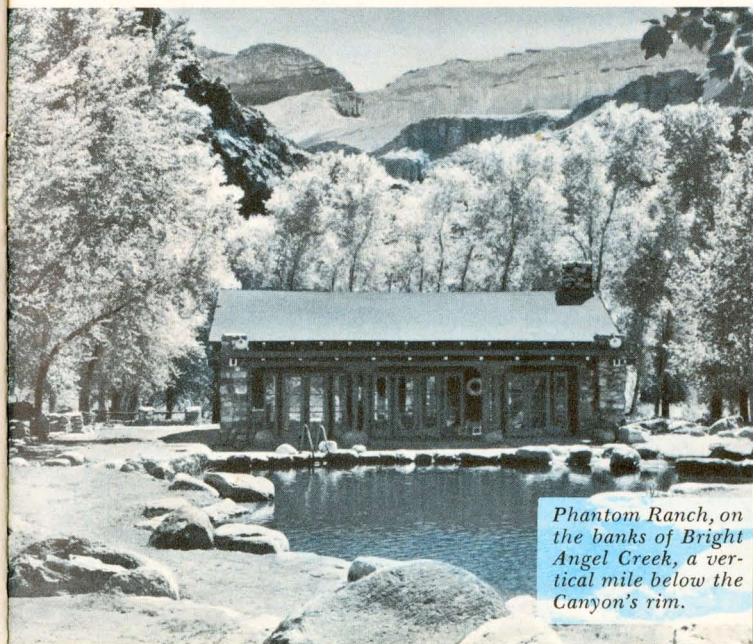
Starting from the head of Bright Angel Trail an everchanging panorama of rugged inner-canyon scenery unfolds. The last part of the journey continues across the 440-foot Colorado River Suspension Bridge and on to Phantom Ranch, a delightful retreat among the cottonwoods along the banks of Bright Angel Creek.

Picturesquely located at the very bottom of the Canyon — a vertical mile below the South Rim — Phantom Ranch comprises a group of rustic cabins surrounding a central lodge. This unique resort provides all necessary facilities — including a swimming pool—for a comfortable sojourn in the depths of the chasm.

To Phantom Ranch and back to the South Rim — with happy hours of rest and recreation at the Ranch — is a two day's trip. Many visitors enjoy spending one or more extra days down at Phantom, making excursions into side-canyons and exploring the Clear Creek Trail.



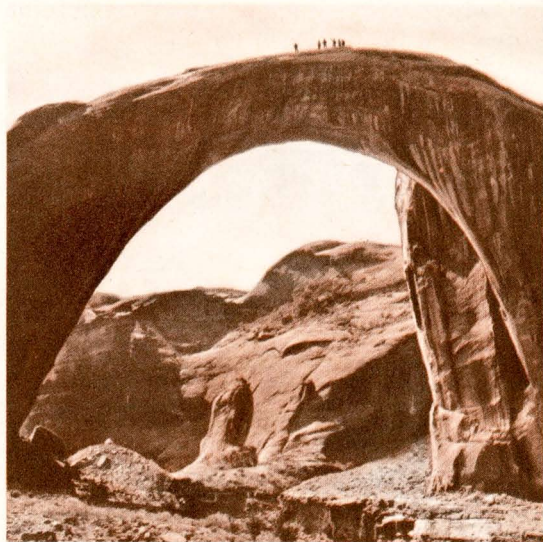
Deer Pictograph



Phantom Ranch, on the banks of Bright Angel Creek, a vertical mile below the Canyon's rim.

Round About the Canyon

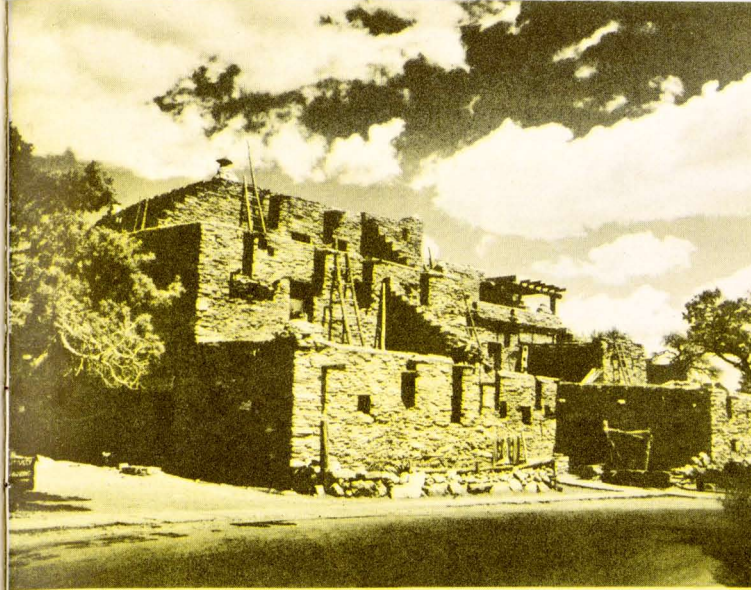
It seems as though the Canyon has dwarfed the many points of interest surrounding it — scenic attractions which in themselves are worth traveling far to see.



Rainbow Bridge — matchless natural arch in the scenic wilderness of the Navajo Country.

Out beyond the forests that fringe the Canyon, lie the elusive beauty of the Painted Desert, the vast Navajo Reservation, the primitive Hopi pueblos cresting high and isolated mesas and the matchless natural arch of Rainbow Bridge. Such points, as well as the Grand Canyon's North Rim, the Petrified Forest, Meteor Crater, San Francisco Peaks may be made the objectives of brief or extended motor outings.

*Cougar and
Cardinal Points
of the Canyon*



Opposite El Tovar stands the Hopi House with its interesting glimpses of Indian life.

When you're not looking at the Canyon

The Canyon offers many opportunities for interesting "in-between-time" activities.

Visitors who enjoy hiking will find delightful footpaths along the Rim. For those who ride, there are picturesque bridle-paths through the forest and saddle horses that are well trained and dependable.

There are museums and observatories and an exhibit of Southwestern art. In the evening there are illustrated lectures, concerts by a cowboy orchestra, moving pictures, informal dances and other social activities.

Opposite El Tovar Hotel stands a faithful reproduction of the terraced dwellings of the Hopi Indians. Here native craftsmen — silver-smiths, basket-makers and blanket-weavers — may be seen at work. And each afternoon the Indians perform colorful ceremonial dances.

Hotels, Lodges and Camps

The cost of a Grand Canyon outing depends almost entirely on your tastes and the size of your vacation budget, for the Fred Harvey hotel, lodges and camps offer a wide price range in living accommodations, at rates approved by the National Park Service.



EL TOVAR HOTEL

For half a century El Tovar, one of America's finest resort hotels, has spread its wide-flung comfort on the Canyon's rim, internationally renowned for its excellent cuisine and its unobtrusive hospitality.



*Hopi
Kachina
Mask*

BRIGHT ANGEL LODGE AND CABINS

The rambling, one-story structures of Bright Angel Lodge and Cabins form a picturesque group on the Canyon's Rim.

The Main Lodge, adjoining guest-lodges and individual cabins offer an unusual variety of comfortable living accommodations at moderate prices.



HOW TO GET TO GRAND CANYON NATIONAL PARK

The Santa Fe is the only railroad entering Grand Canyon National Park. Air-conditioned Pullmans are operated daily direct to the South Rim on Santa Fe's famous train, "The Grand Canyon," where they spend a full day before going on to Chicago or Los Angeles. Convenient motor-coach service provided between Williams and Grand Canyon connecting with other trains of the Santa Fe.

Let one of these Santa Fe traffic offices show you how easy you can include glorious Grand Canyon in your trip to or from California.



Albuquerque, N. M.	Santa Fe Station
Alhambra, Calif.	106 W. Main St.
Amarillo, Tex.	Santa Fe Bldg.
Atchison, Kan.	201 Masonic Bldg.
Atlanta 3, Ga.	1314 Rhodes-Haverty Bldg.
Bakersfield, Calif.	Santa Fe Station
Beaumont, Tex.	413-415 Perlstein Bldg.
Berkeley 4, Calif.	2140 Center St.
Beverly Hills, Calif.	9455 Wilshire Blvd.
Boston 16, Mass.	Rooms 4-5 Little Bldg.
Buffalo 2, N. Y.	1408 Liberty Bank Bldg.
Chicago 4, Ill.	179 W. Jackson Blvd.
Chicago 4, Ill.	238 So. Michigan Ave.
Cincinnati 2, Ohio	701 Dixie Terminal Bldg.
Cleveland 14, Ohio	750 Union Commerce Bldg.
Colorado Springs, Colo.	Santa Fe Station
Dallas 1, Tex.	1315 Commerce St.
Denver 2, Colo.	524-17th Street
Des Moines 9, Iowa	601 Equitable Bldg.
Detroit 26, Mich.	1225 Lafayette Bldg.
El Paso, Tex.	Sheldon and El Paso Sts.
Fort Worth 2, Tex.	815 Houston St.
Fresno 1, Calif.	Santa Fe Station
Galveston, Tex.	411-22nd St.
Glendale 4, Calif.	107 So. Brand Blvd.
Hollywood 28, Calif.	1551 North Vine St.
Houston 2, Tex.	800 Travis St.
Huntington Park, Calif.	7136 Pacific Blvd.
Indianapolis 4, Ind.	210 Guaranty Bldg.
Inglewood, Calif.	314 E. Hillcrest Blvd.
Kansas City 5, Mo.	11th & Wyandotte
Leavenworth, Kan.	781 Shawnee St.
Long Beach 2, Calif.	117 Pine Ave.
Los Angeles 14, Calif.	601 So. Hill St.
Lubbock, Tex.	Santa Fe Station
Mexico City, Mex.	Bolivar No. 22-B
Milwaukee 3, Wis.	401 Majestic Bldg.
Minneapolis 2, Minn.	1286-1290 Northwestern Bank Bldg.
New Orleans 12, La.	307 Pere Marquette Bldg.
New York 18, N. Y.	500 Fifth Ave.
Oakland 12, Calif.	401 Fourteenth St.
Oklahoma City 2, Okla.	112 N. Robinson St.
Pasadena 1, Calif.	Santa Fe Station
Peoria 2, Ill.	211 Jefferson Bldg.
Philadelphia 7, Pa.	1416-18 Lincoln-Liberty Bldg.
Phoenix, Ariz.	102 N. First Ave.
Pittsburgh 19, Pa.	1222 Gulf Bldg.
Pomona, Calif.	Santa Fe Station
Portland 5, Ore.	1201 American Bank Bldg.
Pueblo, Colo.	401 N. Union Ave.
Riverside, Calif.	Santa Fe Station
Sacramento 14, Calif.	1000-10th St.
St. Joseph 2, Mo.	505 Francis St.
St. Louis 1, Mo.	296 Arcade Bldg.
Salt Lake City 1, Utah	811 Continental Bank Bldg.
San Angelo, Tex.	204 P. & S. F. Station
San Antonio 5, Tex.	1211 Majestic Bldg.
San Bernardino, Calif.	Santa Fe Station
San Diego 1, Calif.	Corner of 5th Ave. and B St.
San Francisco 8, Calif.	136 Geary St.
San Jose 13, Calif.	700 Commercial Bldg.
Santa Ana, Calif.	Santa Fe Station
Santa Barbara, Calif.	29 W. Carrillo St.
Santa Fe, N. M.	101 E. San Francisco St.
Santa Monica, Calif.	430 Santa Monica Blvd.
Santa Rosa, Calif.	456 Tenth St.
Seattle 1, Wash.	The 1411 Fourth Ave. Bldg.
Stockton 3, Calif.	101 E. Weber Ave.
Topeka, Kans.	Santa Fe Bldg.
Tulsa 3, Okla.	417 S. Boston Ave.
Washington 5, D. C.	525 Shoreham Bldg.
Whittier, Calif.	148 N. Greenleaf Ave.
Wichita 2, Kan.	200 S. Broadway
Wichita Falls, Tex.	608 Staley Bldg.

R. T. ANDERSON, General Passenger Traffic Manager, Chicago 4, Ill.

C. C. THOMPSON, Passenger Traffic Manager	Los Angeles 14
GEO. F. SHERMAN, Passenger Traffic Manager	Topeka
A. C. ATER, Passenger Traffic Manager	Galveston
H. C. VINCENT, Traffic Manager	Amarillo
G. C. LYMAN, General Freight and Passenger Agent	Albuquerque
T. H. MURRAY, General Freight and Passenger Agent	Phoenix
H. W. BECK, Western General Passenger Agent	San Francisco 8
D. P. ROONEY, Eastern General Passenger Agent	New York City 18

50M, Printed in U.S.A. 3/52



Havasu Falls in Havasu Canyon, a part of Grand Canyon National Park.