

Upper circle: El Tovar Hotel; lower circle: Watchtower at Desert View. Panoramic view of Grand Canyon is from the South Rim near El Tovar.

The Santa Fe is the only railroad entering Grand Canyon National Park. The side-trip is quickly made from the transcontinental mainline at Williams, Arizona, on a sixty-four-mile branch line leading to the South Rim. Through cars are operated daily direct to Grand Canyon on certain transcontinental trains; and convenient motor-coach connections are made with other trains.

How to Get to Grand Canyon

The Santa Fe is the only railroad entering Grand Canyon National Park. The side-trip is quickly made from the transcontinental mainline at Williams, Arizona, on a sixty-four-mile branch line leading to the South Rim. Through cars are operated daily direct to Grand Canyon on certain transcontinental trains; and convenient motor-coach connections are made with other trains.

Each season has its own special attraction and charm. You can enjoy a Grand Canyon outing at any season. Come any time you like.

hilarating, inspiring, relaxing experience.

would to any other vacation spot—for the whole ex-

an ever-changing panorama of glorious scenic beauty

Let one of these Santa Fe traffic offices show you how easy you can include glorious Grand Canyon in your trip to or from California.



Albuquerque, N. M.	Santa Fe Station
Alhambra, Calif.	106 W. Main St.
Amarillo, Tex.	Santa Fe Bldg.
Atchison, Kan.	201 Masonic Bldg.
Atlanta 3, Ga.	1314 Rhodes-Haverty Bldg.
Bakersfield, Calif.	Santa Fe Station
Beaumont, Tex.	413 Perlestein Bldg.
Berkeley 4, Calif.	2140 Center St.
Beverly Hills, Calif.	9429 Wilshire Blvd.
Boston 16, Mass.	Rooms 4-5 Little Bldg.
Buffalo 2, N. Y.	1408 Liberty Bank Bldg.
Chicago 4, Ill.	170 W. Jackson Blvd.
Chicago 4, Ill.	238 So. Michigan Ave.
Cincinnati 2, Ohio	701 Dixie Terminal Bldg.
Cleveland 14, Ohio	750 Union Commerce Bldg.
Colorado Springs, Colo.	Santa Fe Station
Dallas 1, Tex.	1315 Commerce St.
Denver 2, Colo.	234 17th Street
Des Moines 9, Iowa	601 Equitable Bldg.
Detroit 26, Mich.	1225 Lafayette Bldg.
El Paso, Tex.	Sheldon and El Paso Sts.
Fort Worth 2, Tex.	808 Houston St.
Fresno 1, Calif.	Santa Fe Station
Galveston, Tex.	411-22nd St.
Glendale 4, Calif.	107 So. Brand Blvd.
Hollywood 28, Calif.	6405 Hollywood Blvd.
Houston 2, Tex.	800 Travis St.
Huntington Park, Calif.	7136 Pacific Blvd.
Indianapolis 4, Ind.	210 Guaranty Bldg.
Inglewood, Calif.	314 E. Hillcrest Blvd.
Kansas City 6, Mo.	1100 Baltimore Ave.
Leavenworth, Kan.	781 Shawnee St.
Long Beach 2, Calif.	117 Pine Ave.
Los Angeles 14, Calif.	801 So. Hill St.
Lubbock, Tex.	Santa Fe Station
Mexico City, Mex.	Bolivar 22-B
Milwaukee 3, Wis.	401 Majestic Bldg.
Minneapolis 2, Minn.	938 Northwestern Bank Bldg.
New Orleans 12, La.	307 Pere Marquette Bldg.
New York 18, N. Y.	500 Fifth Ave.
Oakland 12, Calif.	401 Fourteenth St.
Oklahoma City 2, Okla.	112 N. Robinson St.
Palm Springs, Calif.	404 N. Palm Canyon Drive
Pasadena 2, Calif.	Santa Fe Station
Peoria 2, Ill.	211 Jefferson Bldg.
Philadelphia 7, Pa.	1114-16 Lincoln-Liberty Bldg.
Phoenix, Ariz.	102 N. First Ave.
Pittsburgh 19, Pa.	1222 Gulf Bldg.
Pomona, Calif.	Santa Fe Station
Portland 5, Ore.	1201 American Bank Bldg.
Pueblo, Colo.	401 N. Union Ave.
Riverside, Calif.	Santa Fe Station
Sacramento 14, Calif.	1000-10th St.
St. Joseph 2, Mo.	505 Francis St.
St. Louis 1, Mo.	296 Arcade Bldg.
Salt Lake City 1, Utah	811 Continental Bank Bldg.
San Angelo, Tex.	204 P. & S. F. Station
San Antonio 5, Tex.	1115 Majestic Bldg.
San Bernardino, Calif.	Santa Fe Station
San Diego 1, Calif.	524 B St.
San Francisco 2, Calif.	136 Geary St.
San Jose, Calif.	28 N. First St.
San Pedro, Calif.	819 So. Pacific Ave.
Santa Ana, Calif.	301 N. Main St.
Santa Barbara, Calif.	29 W. Carrillo St.
Santa Fe, N. M.	101 E. San Francisco St.
Santa Monica, Calif.	430 Santa Monica Blvd.
Santa Rosa, Calif.	456 Tenth St.
Seattle 1, Wash.	The 1411 Fourth Ave. Bldg.
Stockton 3, Calif.	101 E. Weber Ave.
Topeka, Kan.	Santa Fe Bldg.
Tulsa 3, Okla.	417 S. Boston Ave.
Washington 5, D. C.	525 Shoreham Bldg.
Whittier, Calif.	148 N. Greenleaf Ave.
Wichita 2, Kan.	200 S. Broadway
Wichita Falls, Tex.	608 Staley Bldg.

R. T. ANDERSON, General Passenger Traffic Manager, Chicago 4, Ill.
C. C. THOMPSON, Passenger Traffic Manager . . . Los Angeles 14
H. N. DAVIS, Passenger Traffic Manager . . . Topeka
A. C. ATER, Passenger Traffic Manager . . . Galveston
H. C. VINCENT, Traffic Manager . . . Amarillo
G. C. LYMAN, General Freight and Passenger Agent . . . Albuquerque
T. H. MURRAY, General Freight and Passenger Agent . . . Phoenix
L. R. EVERETT, Western General Passenger Agent . . . San Francisco 2
D. P. ROONEY, Eastern General Passenger Agent . . . New York City 18

Grand Canyon

National Park • Northern Arizona



Go Santa Fe
DIRECT TO THE SOUTH RIM
Through Service the Year 'Round

First, of course, the Canyon should be seen from the

How to See and "Feel" the Grand Canyon

regions in the world. square miles of one of the most picturesque and colorful in the Grand Canyon National Park containing 1,009 4 to 18 miles wide and a vertical mile deep. It is enclosed The Grand Canyon is a gigantic chasm 217 miles long, to try and describe it. millions who have seen this great spectacle, it is futile had read somewhere? No matter. You agree with the What was that description of the Grand Canyon you Suddenly and without warning it is upon you. The first glimpse of the Canyon. Your first impulse is to stroll over to the rim for your Canyon you are within a stone's throw of the South Rim. When you step from your Santa Fe train at Grand

The South Rim of Grand Canyon is open all year with daily service via Santa Fe right to the rim!



the glory that is the Grand Canyon

From sunup to sunset . . . from January through December, Grand Canyon presents scenic splendor that is unequalled throughout the world.

From the South Rim visitors watch with wonder as the morning glow outlines the great capes of the opposite rim in golden light with massive shapes silhouetted in hazy blues. Down in the gorge, here and there, the rapids of the Colorado River reflects the sunlight.

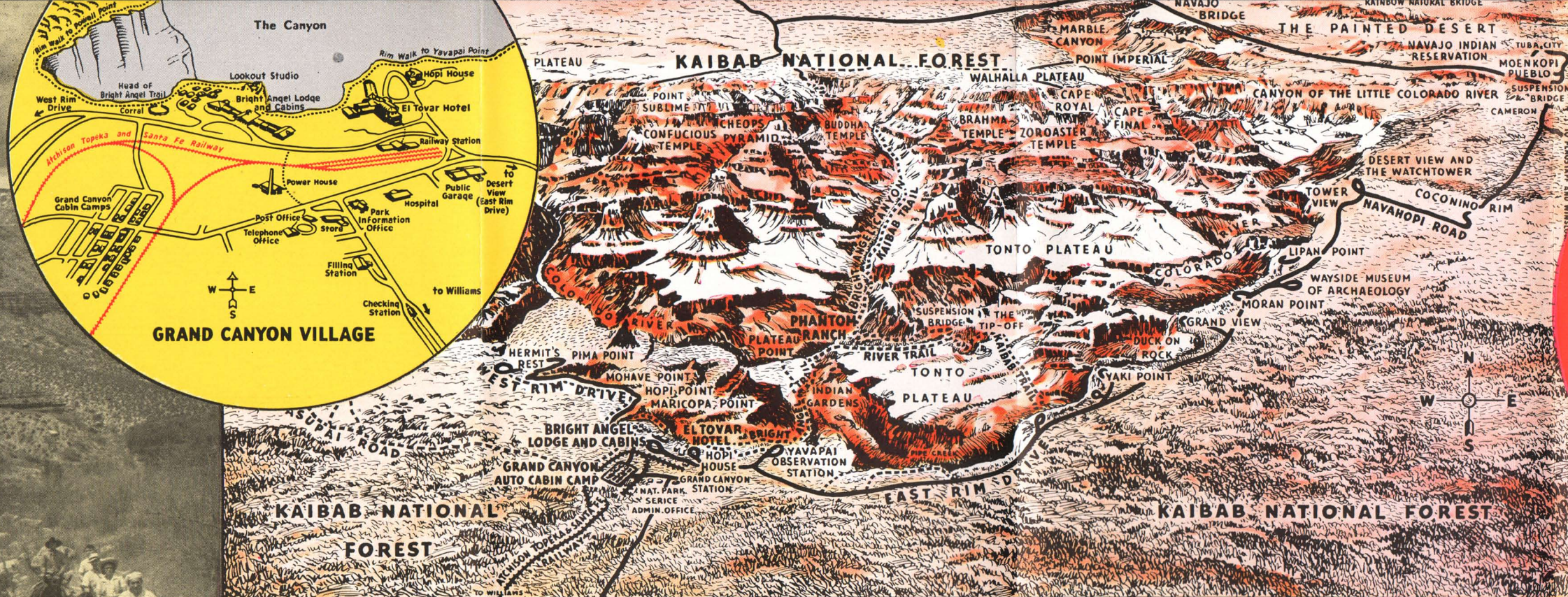
But in an hour all is changed. The dark capes are brilliant-hued and well-defined. Scores of new temples have emerged from the purple gloom.

At noon the capes and temples lose their shadows, but as the afternoon passes, the spectacles of the morning creep back, except the shadows are reversed and the outlines are altered.

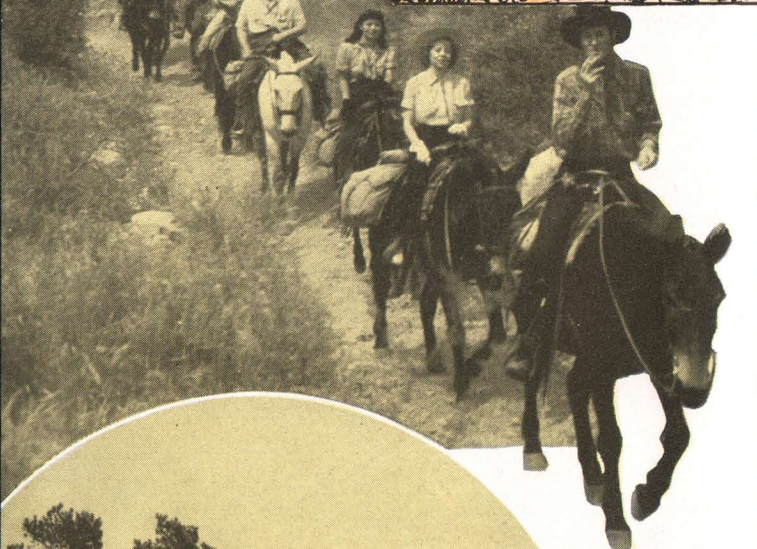
With the setting sun, the reds deepen to dim purples and the grays, yellows and greens change to magical blues.

Then night falls, and in the dark the Canyon suggests unimaginable mysteries.

This is the glory of but one day at Grand Canyon, and while it is seemingly changeless—the cycle of nature from storm to rain, to snow, to sunshine makes the Canyon an ever-changing spectacle.



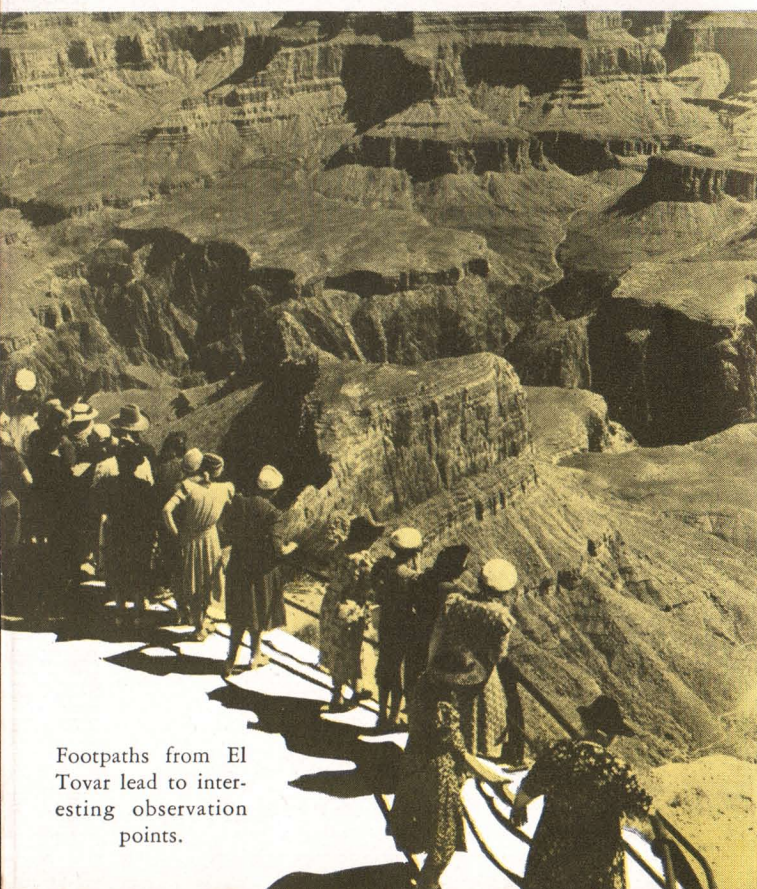
there's never
a dull moment
at Grand Canyon



Bright Angel Lodge and Cabins, right on the rim, provide popular priced accommodations.



Rim drives in comfortable motorcoaches with experienced driver-guides enable visitors to completely see this great scenic panorama. These motor trips are operated daily, the year 'round, by Fred Harvey.



Footpaths from El Tovar lead to interesting observation points.

Motor Trips

The Grand Canyon Rim Drive

Morning Drive: Harvey Motor Coaches leave El Tovar Hotel and Bright Angel Lodge, traveling westward over Hermit Rim Road along the brink of the chasm. Stops are made at Powell, Hopi, Mohave and Pima Points—each affording its own superb view—and, finally, at Hermit's Rest. The latter, a striking cliff-house built of Canyon boulders—with its rustic lounge, great fireplace and observation porch—is an attraction in itself.

Afternoon Drive: After luncheon the route is eastward over the newly paved Desert View Road through a beautiful forest and along the Canyon's Rim. Stops are made at Yavapai Observation Station and at Yaki, Moran and Lipan Points. The end of the drive eastward brings the traveler to The Watchtower at Desert View, a re-creation of the ancient towers erected by the prehistoric inhabitants of the Southwest. Built on a high, rocky point overlooking the Painted Desert, The Watchtower commands one of the most magnificent of Grand Canyon views as well as a sweeping panorama of the Kaibab Forest and the Navajo Indian Country.

RATES: \$7.00 per person, including light refreshments at Hermit's Rest and The Watchtower. (Rates for the morning and afternoon sections of the drive, if taken separately, are \$3.00 and \$6.00 respectively.) Children 6 to 11, inclusive, half rate. (These rates do not include Federal Transportation Tax.)

All-Expense One-Day Tour

Tour 1-A . . . Rate \$12.75 per person . . . Children, 6 to 11, inclusive, \$6.40. (These rates do not include Federal Transportation Tax.)

Includes: Motor transportation, with driver-guide; three meals at El Tovar Hotel.

Program: Breakfast at El Tovar Hotel. Motor drive westward along the famous Rim Road to Hermit's Rest, with leisurely stops at important scenic points en route. Luncheon at El Tovar Hotel. Motor trip eastward over the Desert View Road, through the Kaibab National Forest and along the Canyon's brink, with stops at Yavapai Point Observation Station, at the principal Rim Points and at The Watchtower.

Motor Trips along the South Rim of Grand Canyon operate the year 'round.

Hotels

Lodges

Camps

OPEN ALL YEAR—Fred Harvey Management

El Tovar Hotel

El Tovar, on the Canyon's rim, is one of the most famous resort hotels in America. It is a long, low structure of native boulders and pine logs, with more than 80 guest rooms.

RATES—European Plan:

Room without bath, single, \$3.50 and up; double, \$4.50 and up.
Room with bath, single, \$5.00 and up; double, \$7.00 and up.
Room with bath, twin beds, double, \$8.50 and up.

Children's Rates: 3 to 7 years, inclusive, half rate; 8 years and over, full rate.

MEALS:

Table d'hôte service in Dining Room: Breakfast, \$1.50; luncheon, \$1.50 to \$1.75; dinner, \$2.00 to \$3.00. Also a la carte service.

Bright Angel Lodge and Cabins

These new facilities, on the rim of the Canyon, provide a wide range in comfortable, moderately priced living accommodations in guest lodges and individual cabins.

RATES—European Plan:

Room without bath, single, \$3.00, \$3.50 and up; double, \$4.00 and up.
Room with bath, single, \$4.00 and up; double, \$5.00 and up.
Children's Rates: 3 to 7 years, inclusive, half rate; 8 years and over, full rate.

MEALS:

Table d'hôte and a la carte meal service in Coffee Room at reasonable prices.

Reservations protected by deposits (one night's lodging) are advisable throughout the year. Deposits will be refunded if reservation is cancelled 24 hours before arrival.

Trail Trips

To many visitors, the "high spot" of a Grand Canyon Outing is the "adventure on muleback" down one of the famous inner-canyon trails. These trail trips may be purchased only after arrival at Grand Canyon.

One-Day Bright Angel Trail Trip*

Each morning trail parties on muleback, in charge of Fred Harvey guides, leave El Tovar Hotel and Bright Angel Lodge. A few minutes' ride to the head of Bright Angel Trail . . . and the great "adventure" is begun! About halfway down, a brief stop is made at Indian Gardens, after which the trail stretches out upon the Tonto Plateau and presently heads downward into the Granite Gorge leading to the rocky banks of the Colorado River, where a stop is made for rest and luncheon. The return journey is made in easy stages, reaching the hotels on the Rim late in the afternoon.

RATES: \$10.00 per person, including luncheon and services of guide. Children, regardless of age, are charged full fare. (This rate does not include Arizona State tax.)

Two-Day Phantom Ranch Trip*

Each morning trail parties leave El Tovar Hotel and Bright Angel Lodge for the head of Bright Angel Trail, where the descent by muleback begins. For the first day the trail trip takes us down, down . . . to the Colorado River and across the Suspension Bridge, then on to Phantom Ranch for dinner and overnight stop.

Second Day: The return journey is made over Kaibab Trail arriving on the South Rim in the late afternoon.

RATES: Phantom Ranch two-day trip, including saddle mule trip over Bright Angel Trail to Phantom Ranch and return over Kaibab Trail, 23 miles; with guide service, two meals and overnight accommodations at Phantom Ranch, and two box lunches on trail, \$32.75. (This rate does not include Federal Transportation tax.)

Phantom Ranch

Picturesquely located at the bottom of the Grand Canyon and nestling among the towering crags of Bright Angel Canyon—nearly a vertical mile below the South Rim—is Phantom Ranch, one of the most unique resorts in the world. With its rustic cabins, central dining-room and recreation halls and its crystal-clear swimming pool, Phantom Ranch affords every comfort for a brief or extended stay in the depths of the Canyon.

**Management at Grand Canyon must reserve the right to cancel or refuse mule trips into the Canyon to persons physically handicapped, overweight, advanced in years, or to children under 12.*

Grand Canyon Cabin Camp

ROOMS AND CABINS:

Cabins without bath, running hot and cold water, furnished, maid service:

1 person	\$3.00
2 persons (double bed)	3.50
2 persons (twin beds)	4.00
3 persons	4.50
4 persons	5.50

Rooms with Shower Bath, furnished, maid service:

1 person	3.50
2 persons (double bed)	4.50
2 persons (twin beds)	5.00
3 persons	5.50
4 persons	6.50

Starting Times for Grand Canyon Trips

MOTOR TRIPS—

GRAND CANYON RIM DRIVE—

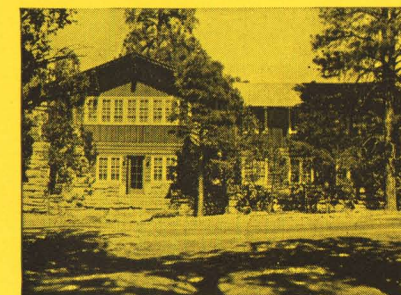
	Leave Hotels	Return to Hotels
to Hermit's Rest (morning)	9:30 a.m.	11:30 a.m.
to Hermit's Rest (afternoon)	2:00 p.m.	4:00 p.m.
to Desert View (afternoon)	1:30 p.m.	5:00 p.m.

TRAIL TRIPS—

Bright Angel Trip (to Colorado River or Plateau Point)	9:00 a.m.	5:00 p.m.
Phantom Ranch via Bright Angel Trail	11:00 a.m.	
Return via Kaibab Trail		3:00 p.m. (next day)



Opposite El Tovar stands the Hopi House with its interesting glimpses of Indian life. Here you will also see Indian dances each afternoon.



National Park Administration Building near El Tovar provides complete information for Grand Canyon visitors, and the nearby Naturalist Workshop maintains exhibits and reference library of the Canyon.



During the summer informal free entertainment is provided by interesting cowboy musical programs, and dances are given several nights a week at Bright Angel Lodge.

General Information

SIDE-TRIP RAIL FARES: Side-trip \$7.50 first class, or \$5.50 intermediate class or coach from Williams, Arizona, to Grand Canyon and return may be included in any class of rail ticket routed to or via Williams. (Pullman side-trip fare extra.) Rail side-trip tickets are honored on Motor Coach between Williams and Grand Canyon. Side-trip coupons may be included at time you purchase your ticket or en route upon presentation of through ticket.

Horseback Riding: All classes of mounts and saddles are available. Rates: Two hours or less, \$4.00; half day, \$6.00; full day, \$9.00.

Guide Service: Special guides available at \$9.00 per day or \$6.00 per half day.

Kolb Brothers' Travelogue: In their studio at the head of Bright Angel Trail, the Kolb Brothers give each day an interesting illustrated lecture. Moderate admission charge.

Yavapai Point Observation Station and Museum: Located one and one-half miles east of El Tovar, the National Park Service maintains this observation station and trailside museum. No admission charge.

Public Utilities: Telegraph, telephone and postal facilities are available in the hotels.

Medical Service: Grand Canyon has a well-equipped hospital. A physician and trained nurse are always available.

Care of Children: Provision has been made at El Tovar for the care of children, at reasonable cost.

Tax: Rim drives, all-expense tours and trail trips, which include motor transportation, are subject to 15% Federal Transportation Tax for the amount of motor transportation involved. This tax is collected at the time tickets are sold.

Accommodations at Grand Canyon are subject to Arizona sales tax 1% on meals, 2% on rooms. This tax collected at Grand Canyon.

Note: All rates quoted herein are subject to change without notice.

Santa Fe is the only railroad entering Grand Canyon National Park