



Super **CHIEF**
and the
CHIEF



SUPERB STREAMLINED
TRAINS BETWEEN
CHICAGO AND
★ CALIFORNIA ★





THE *Super Chief* and *Chief* are frankly designed for those who seek the utmost in swift, luxurious travel to and from California.

They are the flag-bearers of that great fleet of sixteen gleaming streamliners with which Santa Fe has brought new delight in travel to those who journey between Chicago and California and in the Southwest.

The *Super Chief* and *Chief* are both extra fare trains, air-conditioned, and streamlined in stainless steel. They are

alike in their superb Fred Harvey cuisine, and in the type, modernity and beauty of their equipment.

Beyond this, each has its own special features that we hope will appeal as strongly to you as they have to the long roll of discriminating travelers in whose esteem the *Super Chief* and the *Chief* already hold a high and friendly place.

A handwritten signature in dark ink, reading "T. P. Gaceah". The signature is stylized with a large, sweeping initial "T" and a long, horizontal flourish.

Passenger Traffic Manager, Santa Fe System Lines,
Chicago, Illinois.



The Super Chief

The *Super Chief*, Diesel-electric drawn, and gliding smoothly twice-a-week between Chicago and Los Angeles in but 39¾ hours, is the only California streamliner, on this swiftest of schedules, that is exclusively for first-class travel. Departures from Chicago are each Tuesday and Saturday evening; from Los Angeles, each Tuesday and Friday evening • The advantage of the *Super Chief's* speed, where time is of the essence, is obvious. For example, you may leave the Atlantic seaboard Friday evening, be in Los Angeles bright and early Monday morning, and vice versa.





The Chief

The *Chief* is the outstanding train in daily transcontinental service to and from California, and as such is unique in several respects • The *Chief* is the only *daily streamliner* between Chicago and California via any line. In speed it is many hours faster than any other *daily* all-first-class train between Chicago and Los Angeles, in this respect occupying a convenient middle ground between the *Super Chief* and conventional limited trains.

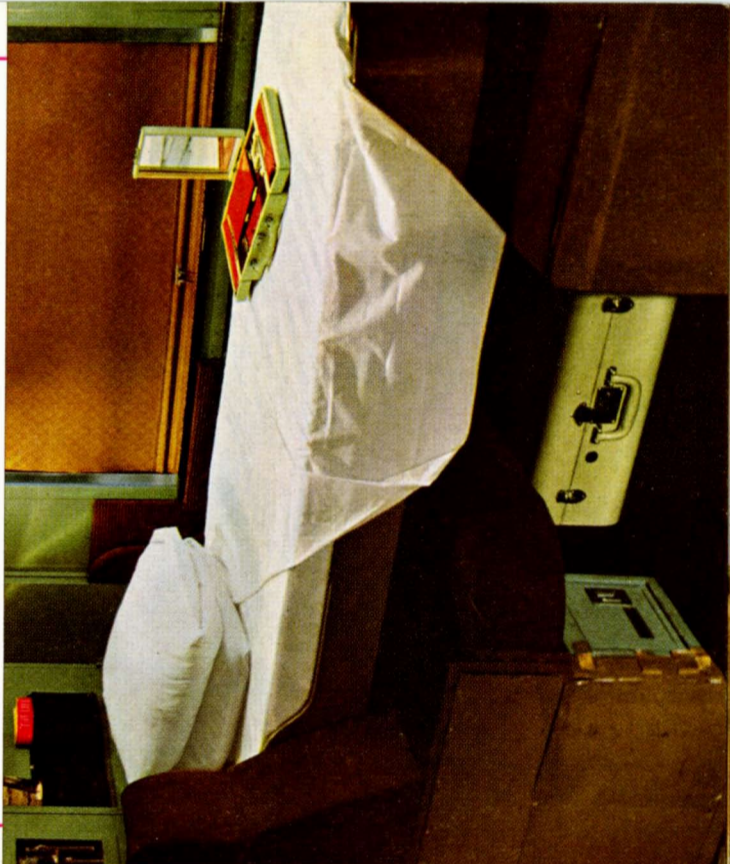






FORWARD LOUNGE

Inasmuch as the *Super Chief* and *Chief* are both superb extra fare streamliners, for first-class travel only, their accommodations and services are almost identical. Hence these natural color photographs and brief descriptions apply equally to either train • Pictured here is the forward lounge, one of the three cars providing cheery, roomy, and convenient lounge facilities, regardless of the location of one's accommodations.



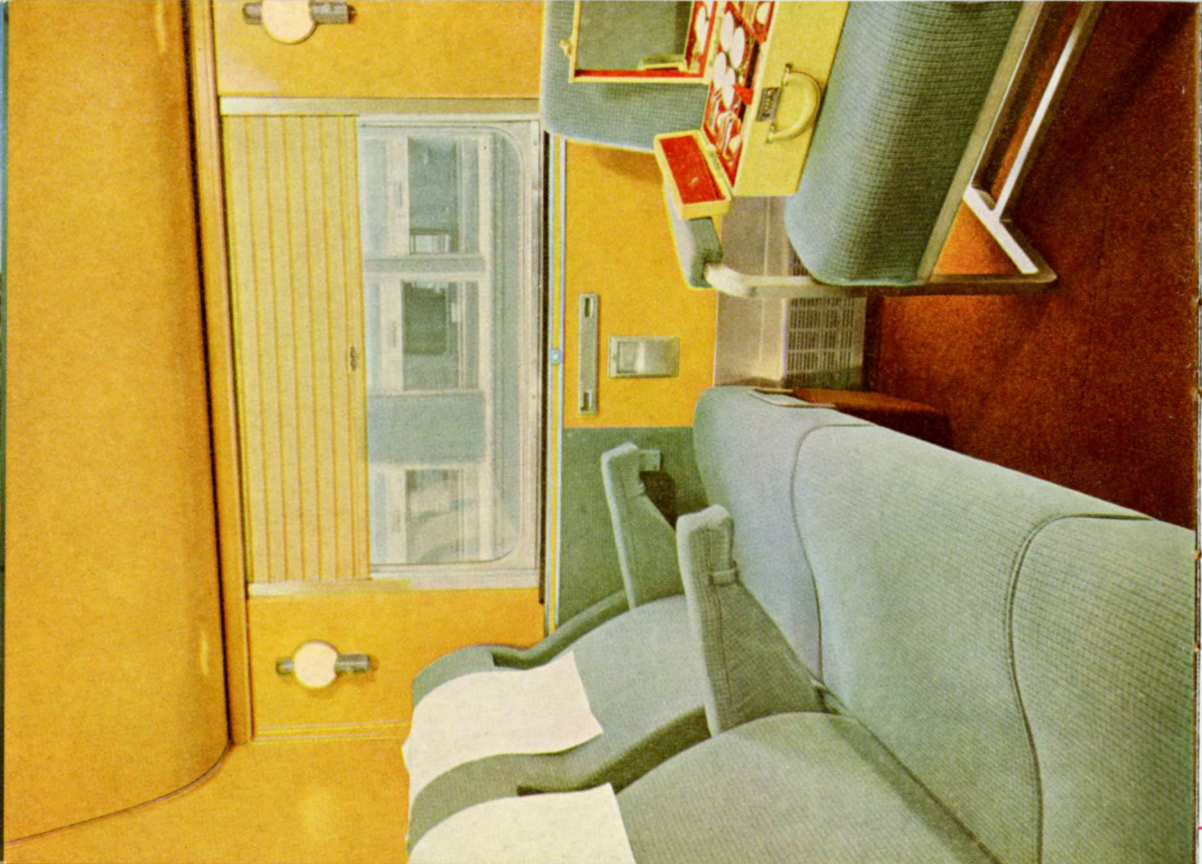


ROOMETTES

The Roomette, a recent development in Pullman accommodation, is a small private room ideal for economical single occupancy. By day the bed folds into the wall, by night it is lowered and locked in place at a touch. There are complete toilet facilities, washstand and mirrored cabinets; clothes locker, large luggage rack and other conveniences. The Roomette, too, permits individual regulation of ventilation, heat and light.



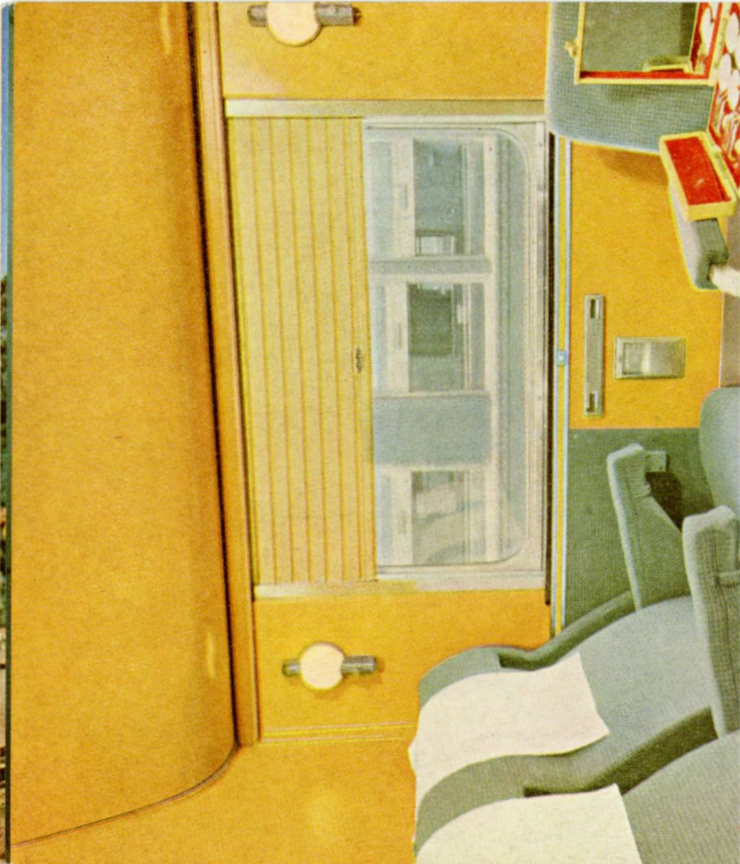




COMPARTMENTS

These new type compartments are extremely roomy, with a transverse sofa and easy chair replacing the old section seats by the windows. By night the sofa becomes a comfortable bed, and there is also an upper berth, thus providing both day and night accommodations for one to four persons. Tastefully decorated, modernly lighted, and with complete toilet facilities, clothes locker, luggage space, shoe box, and other travel conveniences, these compartments also may be occupied en suite with other room accommodations.

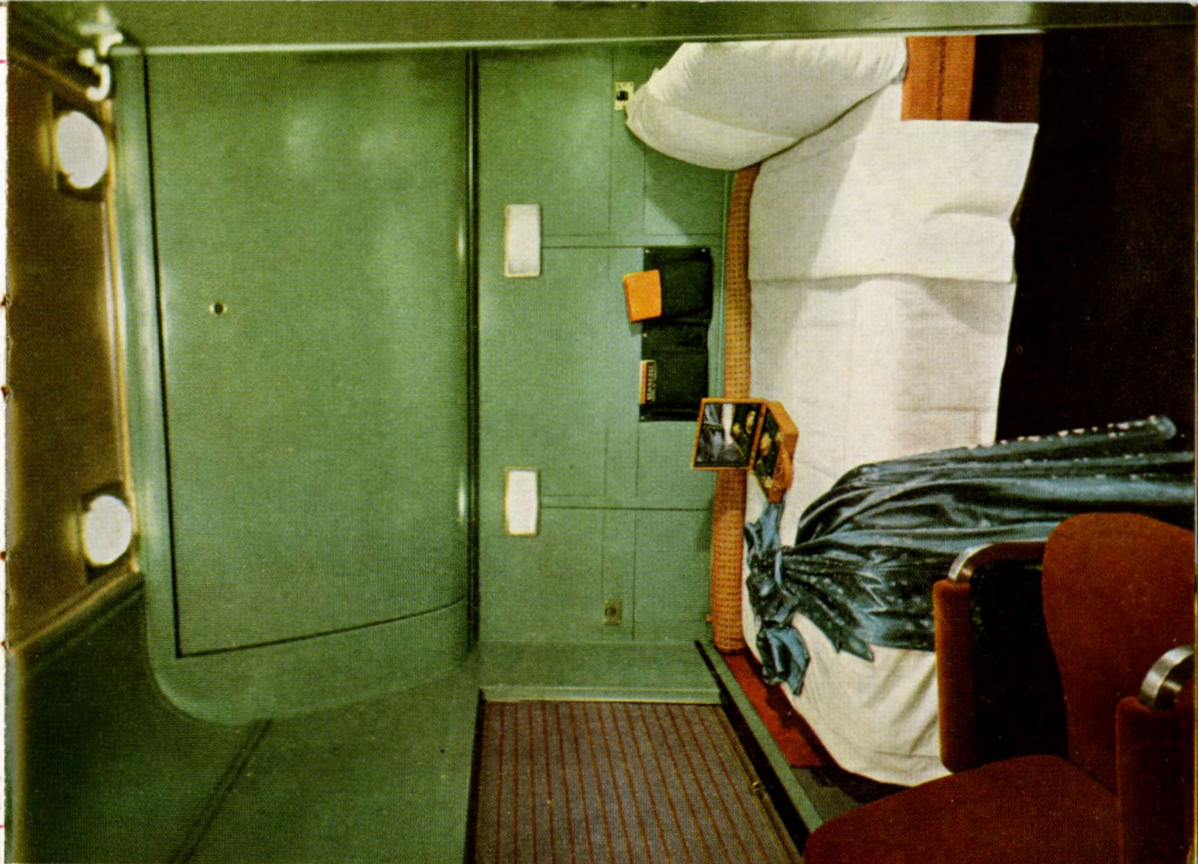




DRAWING ROOMS

Spacious comfort keynotes the new drawing rooms on the *Super Chief* and *Chief*, due to the complete rearrangement of facilities, combined with tasteful decoration, and modern lighting and appointments. By day there are two lounge chairs and a long sofa. At night the sofa becomes a bed; another bed materializes from the wall, and an upper berth is available, if desired. There is a complete toilet annex, a large wardrobe, ample storage for luggage, a shoe box, and individual regulation of lighting and ventilation.











BED ROOMS

The double bedroom is an enclosed private room containing a sofa (which is transformed into a comfortable bed at night), upper berth, toilet facilities, full length mirror, hinged table, and folding wash basin. By opening the partition between the rooms, adjoining bedrooms can be turned into one large room—thus providing family groups with a delightfully convenient and comfortable way to travel.





THE CLUB LOUNGE CAR

The club car, adjoining the diner near the center of the train, is another of the several so-called "public cars" that assure *Super Chief* and *Chief* passengers a degree of luxurious comfort and opportunities for leg stretching and relaxation peculiar to the fine train, and unknown on any other mode of land or air travel. In these beautiful modern cars you will find a cocktail bar, radio, writing desk and stationery, and a profusion of current periodicals and papers.







SECTIONS

The section is a combination of an upper and lower berth by night, and of two comfortable facing window seats by day. Upper or lower berths may be purchased separately, of course. When a section is reserved for one person, however, the upper berth is not made down, giving additional space and privacy at night, and use of both window seats during the day. Section accommodations on the *Super Chief* and *Chief* are the latest and most attractive type.





OBSERVATION LOUNGE

The observation lounge, in the rear room car on the *Super Chief* and *Chief*, supplements the forward lounge, and the cocktail lounge near the center of the train, in providing that generous extra space for relaxation that is so welcome a feature of fine train travel. In the observation lounge you will find another writing desk, with distinctive train stationery, and a wide selection of current periodicals, while broad windows permit sweeping views of the passing scenery.

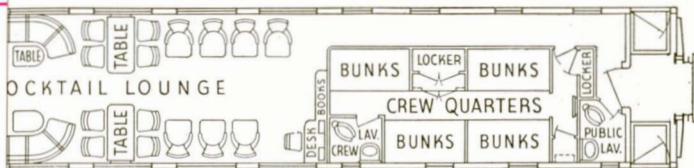




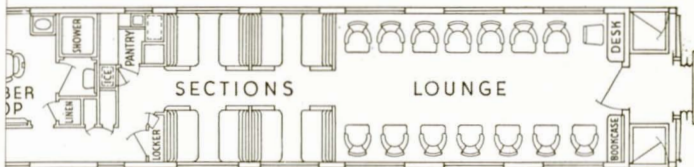


FRED HARVEY DINING CAR SERVICE

For more than half a century discriminating travelers have recognized Fred Harvey dining car service on the Santa Fe as outstanding in the transportation world. This famous service reaches its finest expression in the beautiful diners of the *Super Chief* and *Chief*, with their carefully chosen personnel, their gleaming silver and glassware, snowy napery and especially designed china. Breakfast and luncheon are served a la carte; dinner, both a la carte and table d'hôte.



Club Lounge Car



Club Baggage Car



Club Baggage Car



THE SUPER CHIEF SCHEDULE

No. 17	TWICE WEEKLY	No. 18
7:15 PM	Lv. Chicago. Ar	1:45 PM
2:22 AM	Ar. Kansas City . . . Lv.	6:07 AM
2:27 AM	Lv. Kansas City . . . Ar.	6:00 AM
5:30 AM	Ar. Barstow Lv.	11:17 PM
7:28 AM	Ar. San Bernardino . Lv.	9:35 PM
8:35 AM	Ar. Pasadena Lv.	8:25 PM
9:00 AM	Ar. Los Angeles . . . Lv.	8:00 PM

CONNECTING TRAINS

7:45 AM	Lv. Barstow Ar.	10:55 PM
8:15 PM	Ar. San Francisco . . Lv.	10:20 AM
9:10 AM	Lv. Los Angeles . . . Ar.	6:45 PM
12:30 PM	Ar. San Diego Lv.	4:05 PM

• *The Super Chief leaves Chicago on Tuesdays and Saturdays; Los Angeles, Tuesdays and Fridays.*

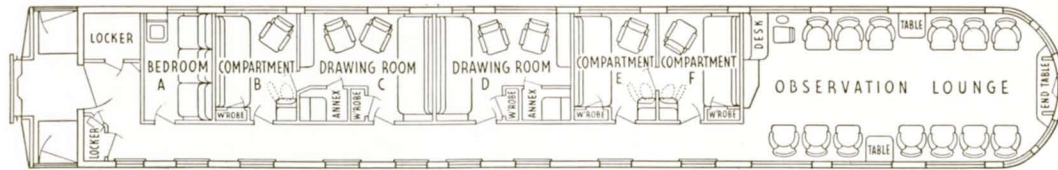
THE CHIEF SCHEDULE

No. 19	DAILY	No. 20
12:01 PM	Lv. Chicago Ar.	1:25 PM
9:40 PM	Ar. Kansas City . . . Lv.	4:00 AM
10:10 PM	Lv. Kansas City . . . Ar.	3:45 AM
7:25 AM	Ar. Barstow Lv.	3:20 PM
9:45 AM	Ar. San Bernardino . Lv.	1:15 PM
11:18 AM	Ar. Pasadena Lv.	12:01 PM
11:50 AM	Ar. Los Angeles . . . Lv.	11:30 AM

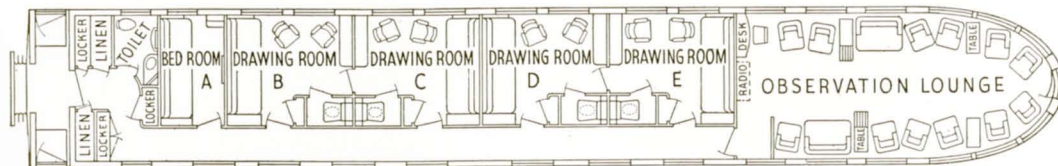
CONNECTING TRAINS

7:45 AM	Lv. Barstow Ar.	12:05 PM
8:15 PM	Ar. San Francisco . . Lv.	11:00 PM
12:30 PM	Lv. Los Angeles . . . Ar.	10:40 AM
3:10 PM	Ar. San Diego Lv.	8:00 AM

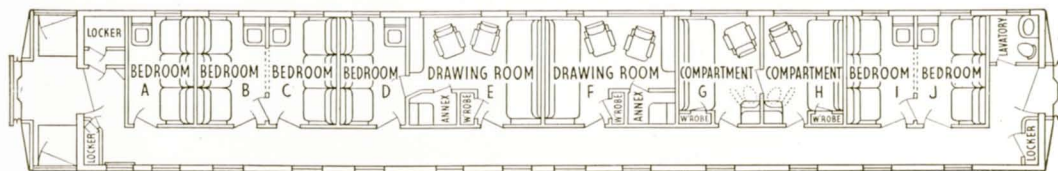
• *Example: Leave Chicago on Sunday; arrive Los Angeles Tuesday morning*



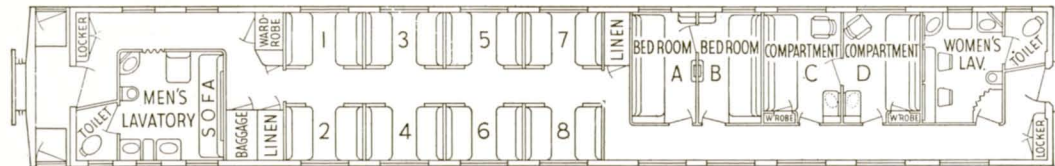
3 Compartments — 2 Drawing Rooms — 1 Double Bedroom — Observation



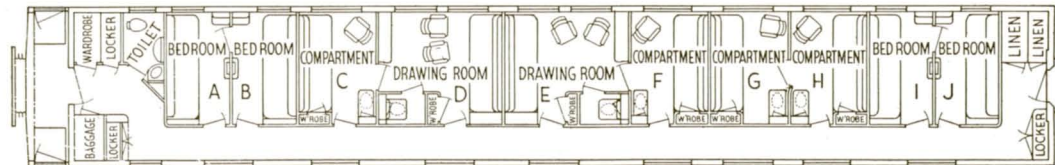
4 Drawing Rooms — 1 Double Bedroom — Observation



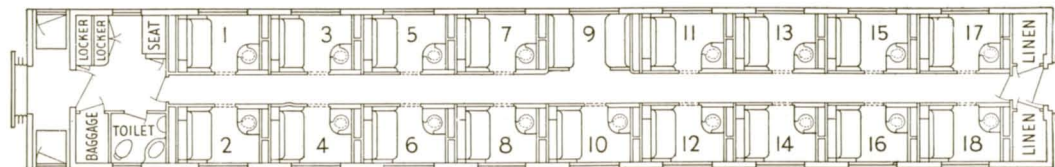
2 Drawing Rooms — 2 Compartments — 6 Double Bedrooms



8 Sections — 2 Compartments — 2 Double Bedrooms



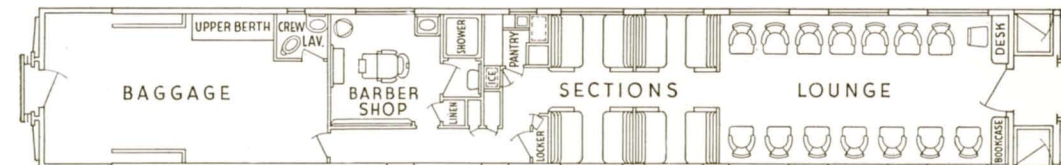
2 Drawing Rooms — 4 Compartments — 4 Double Bedrooms



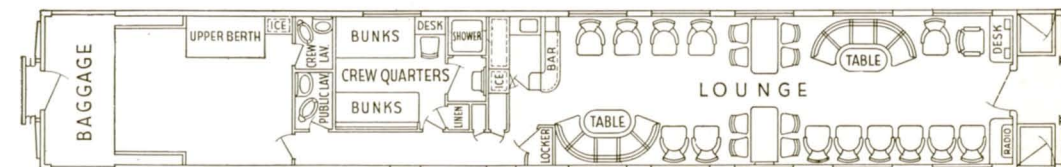
17 Roomettes



Club Lounge Car



Club Baggage Car



Club Baggage Car

