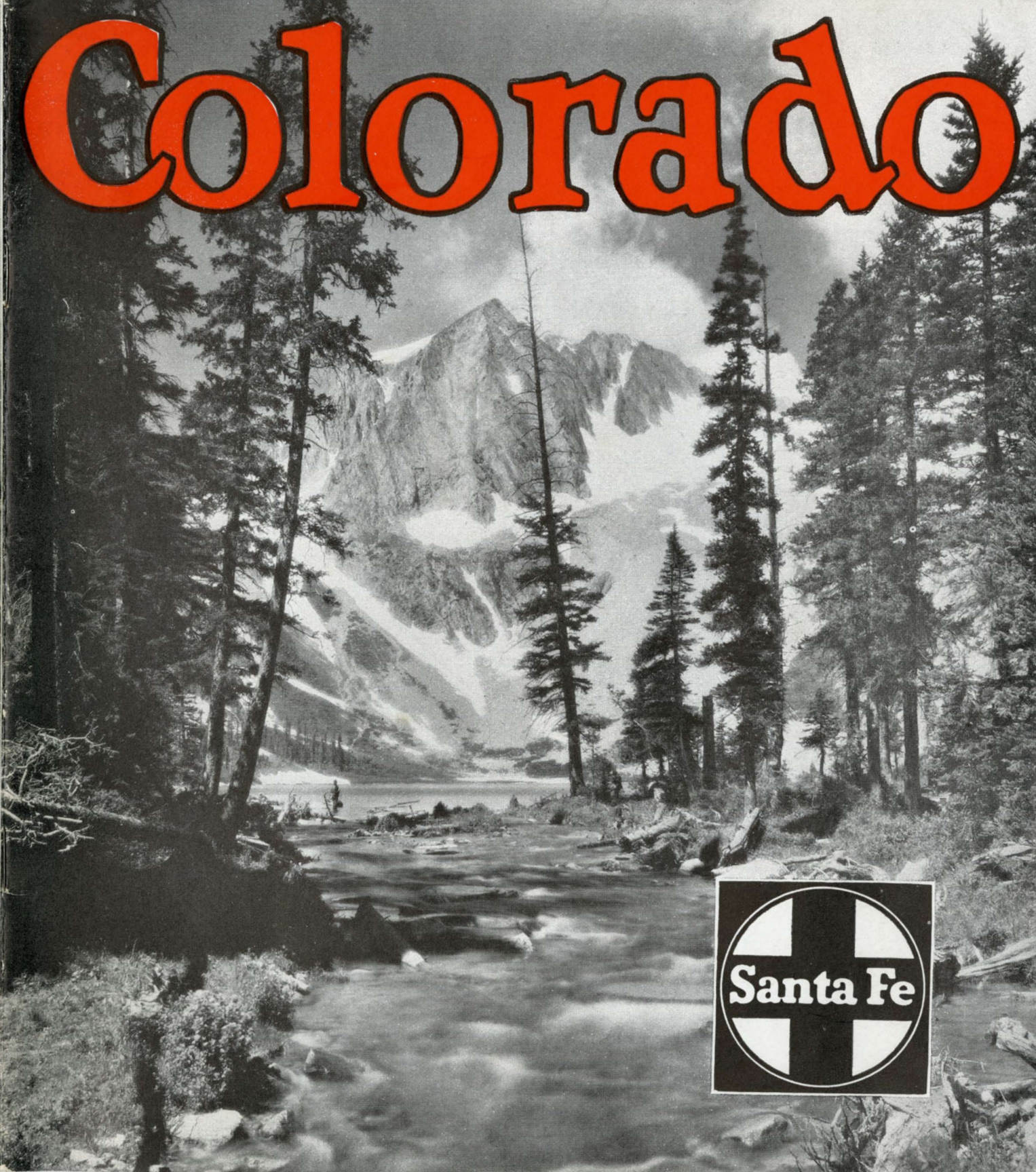


# Colorado











## COLORADO—A *Western Vacation Paradise*

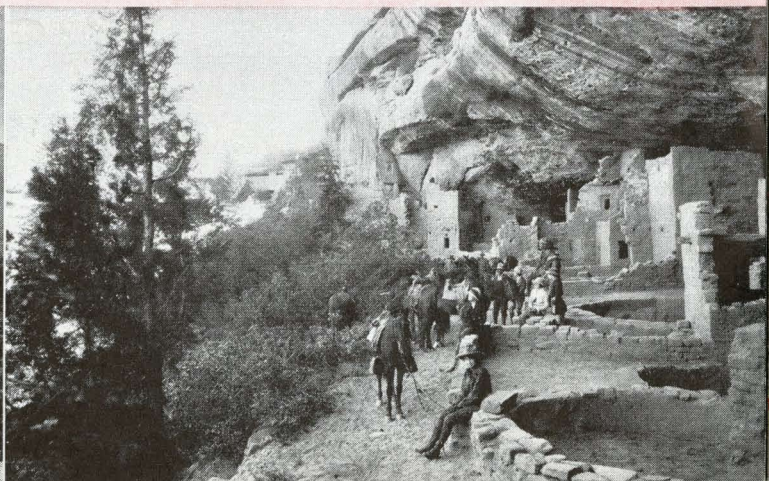
THERE is a majesty in the Colorado Rockies, a clean, crisp, tang in the mountain air, a joy in the flooding sunshine and deep blue of the skies, that has dispelled the cares and worries of the workaday world for millions.

Colorado is a tonic for mind and body, a bracer that sends you back home happier, healthier, with strength and energy renewed. Go out for a few days or a week, if you can do no better. Plan for a whole season, if you can. It is a country that weaves its spell quickly and holds it long. You can almost write your ticket in things to do. There is scenic beauty without end, from snow-topped peaks and vast forests of tall trees, to fertile

valleys and fields of flowers. There are busy cities, picturesque mining towns, great prehistoric ruins; magnificent National Parks and Monuments; dude ranches and famous resorts. There is about every sport one can name; and above all, that indefinable *feel* of the Far West that contributes to physical and mental well-being.

### Denver

Denver, the "Mile-high city," is the vacation center of the West. It is centrally located in Colorado and but a brief journey from any part of the state. A very pleasant and enjoyable vacation can be spent right in Denver and its immediate

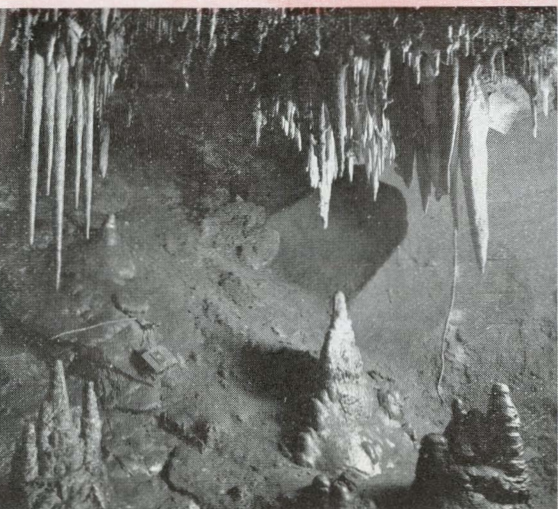




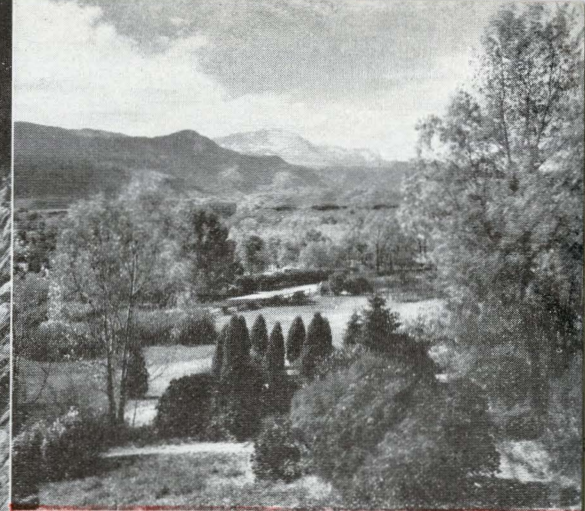


environs, for many of Colorado's most renowned glories are within a few miles of the city.

Denver is unique in having a system of mountain parks for its playground. It is only a short drive to the municipally-owned mountain areas surrounding the city. One of the most popular drives takes you to Lookout Mountain, via the scenic Lariat Trail, and enables you to see Wildcat Point, overlooking Clear Creek, scene of one of the great gold rushes, and the



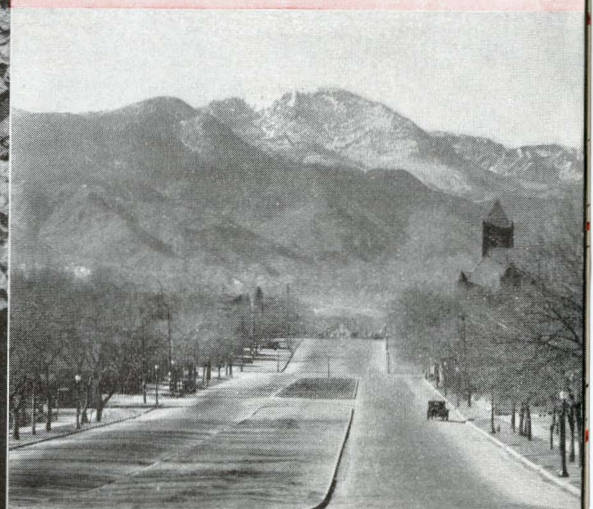




rock tomb and museum of relics of Colonel William F. "Buffalo Bill" Cody, on top of Lookout Mountain. It reaches as far as Denver's wild animal sanctuary and returns through the picturesque Bear Creek Canyon.

About fifty miles from Denver, over Moccasin Trail, are Mount Evans and Echo Lake. This crystal-clear lake, 10,000 feet above sea level, is surrounded by six of the most commanding peaks of the American Rockies.

South of Denver, but a short











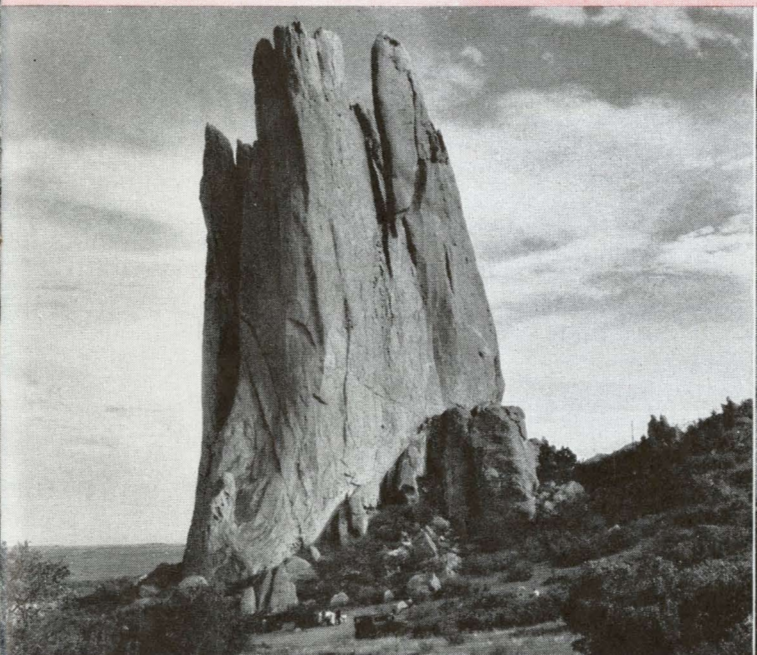
distance, is the famed Pikes Peak region, embracing some of the outstanding scenic wonders of the United States.

### Colorado Springs and Manitou

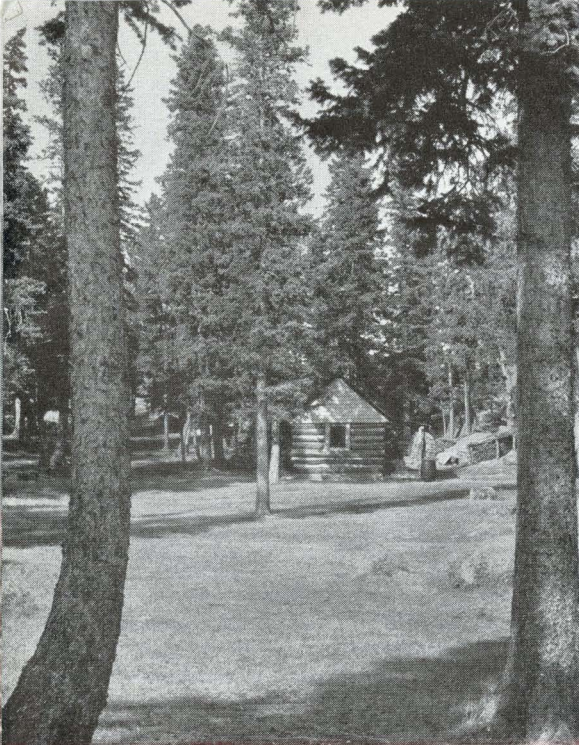
Colorado Springs, seventy-five miles south of Denver, is the chief city in this region of distinctive charm. Outstanding among the things to see are

the Garden of the Gods, Seven Falls, Cave of the Winds, Manitou, and Mount Manitou Incline, Cripple Creek, and Pikes Peak. Colorado Springs, the "Sunshine City," is famed for its fine hotels and resorts, its unusual scenic location almost at the foot of Pikes Peak, and its marvelous climate.

Manitou, but a few miles away, nestles complacently in a rugged canyon against a mountain



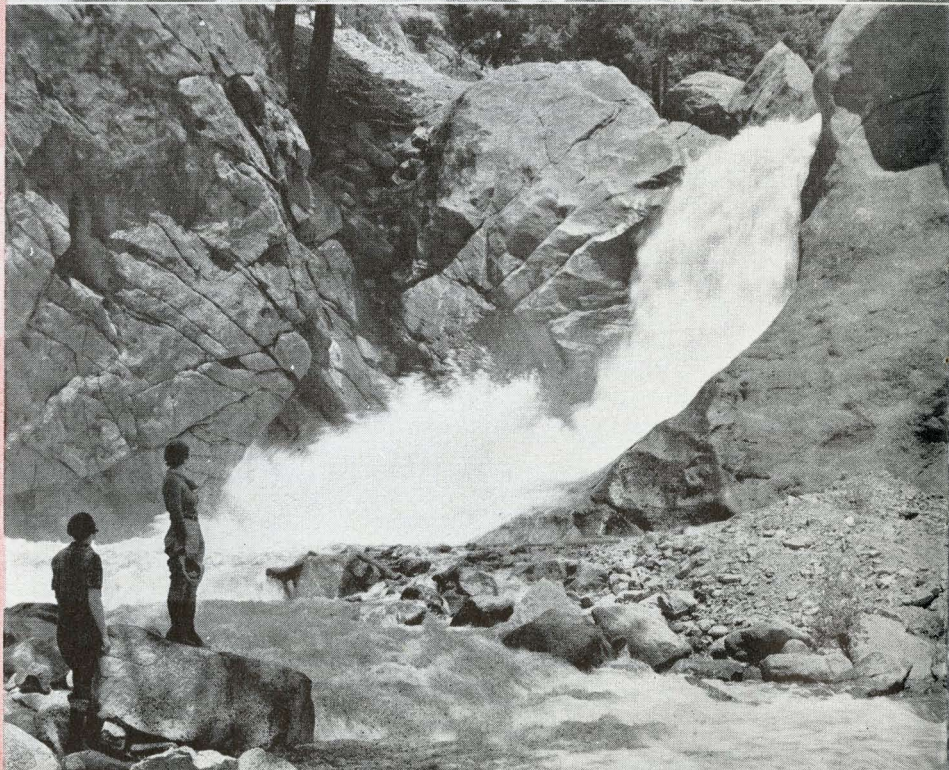
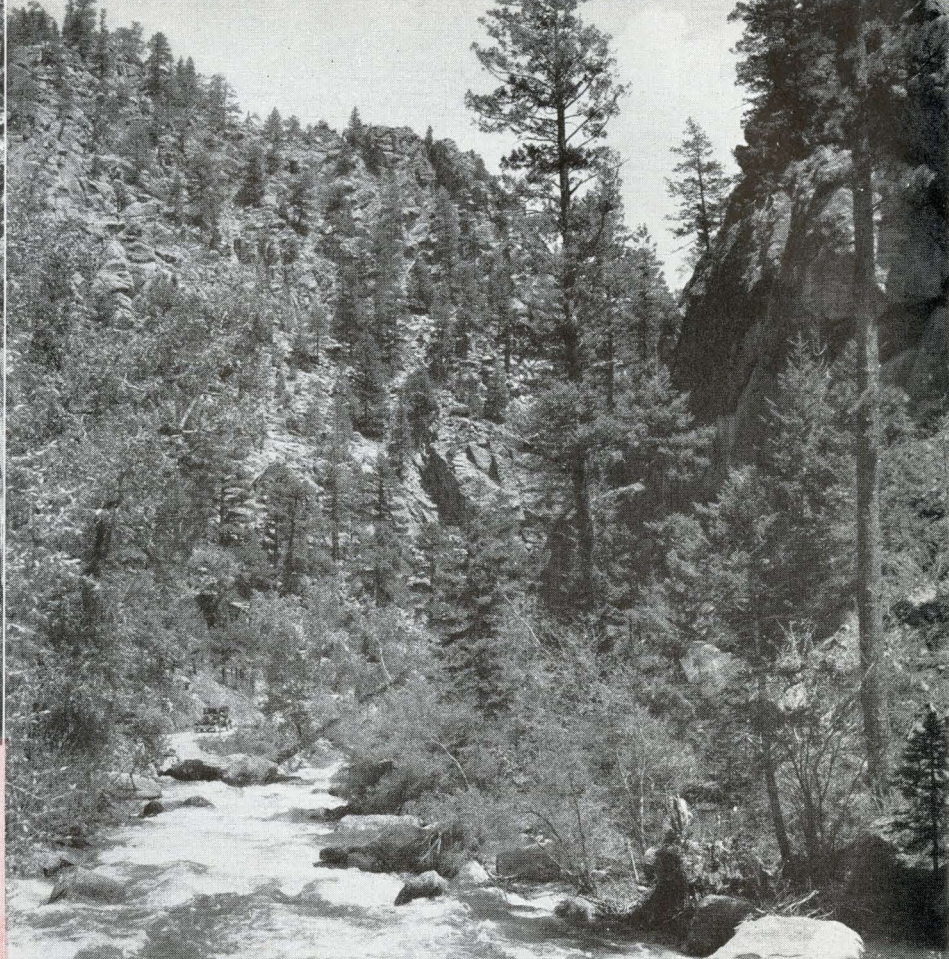




background. Its mineral waters and baths are known the world over for their curative and health-giving qualities. Indian lore reveals that in ages long past warriors were sent to revive their waning spirits with the effervescent waters given special properties by the great Indian god, Manitou.

From Manitou to the summit of Mount Manitou, some 9,000 feet high, runs a scenic incline cable railway, reputed to be the highest and steepest of its kind in the world. As the cars are slowly drawn up to the top by a cable capable of holding a weight of ninety tons, the ever-widening panorama spread beneath forms a picture long to be remembered.

Manitou is the starting point of the broad auto highway to







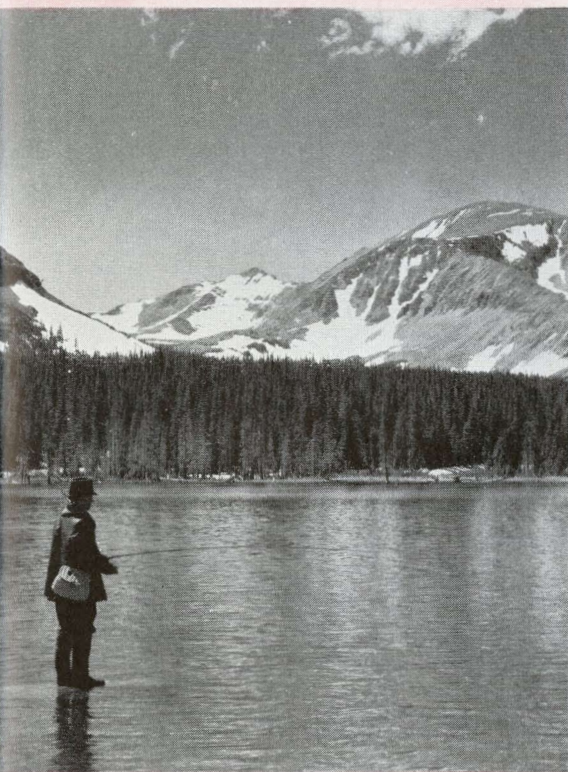






the summit of Pikes Peak. The top of this 14,000-foot peak may also be reached by taking the unusual all-steel cog railway which puffs up the rugged slopes.

A short trip from Manitou takes you to the majestic natural park, the Garden of



the Gods. Marvelous red sandstone formations, wrought by age upon age of erosion by wind and rain, are a source of unending interest.

Other worth-while trips about Colorado Springs include Cheyenne Mountain topped by an Indian pueblo,

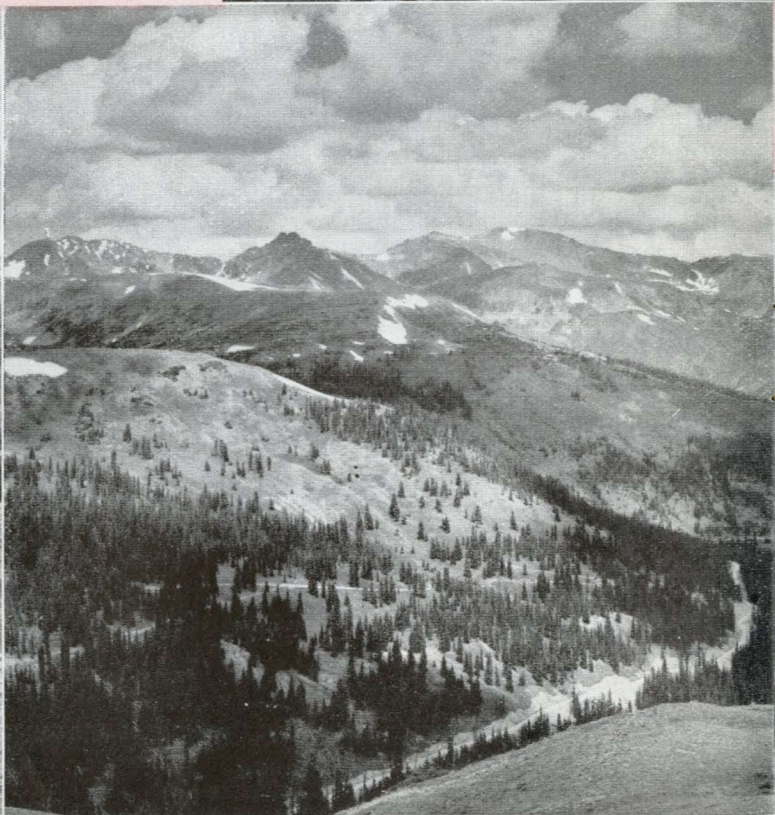
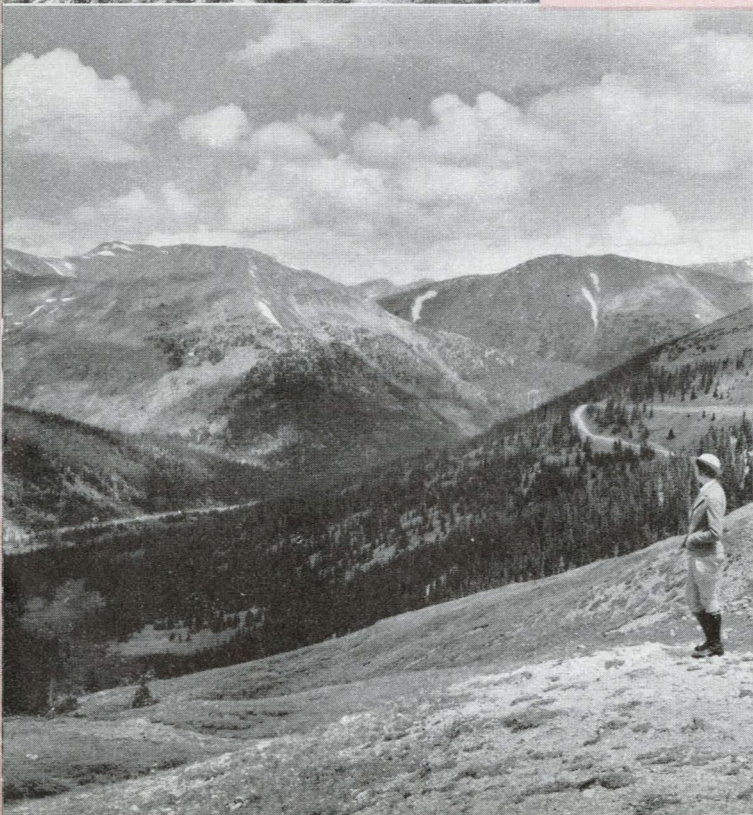
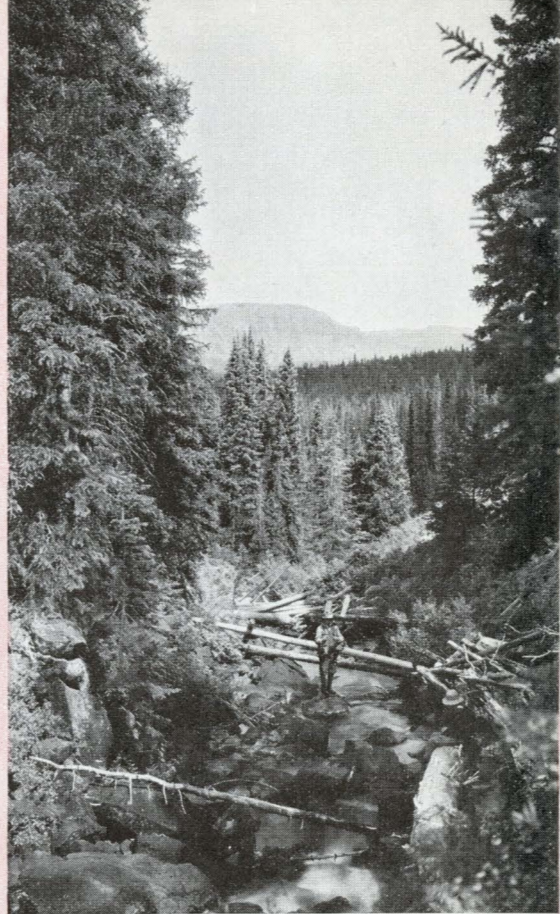






with protected wild game seen by the side of the road on the way, and South Cheyenne Canyon where the towering Pillars of Hercules stand as sentinels before beautiful Seven Falls, where steps lead to the very top of the canyon for a view from above of the seven distinct cascades.

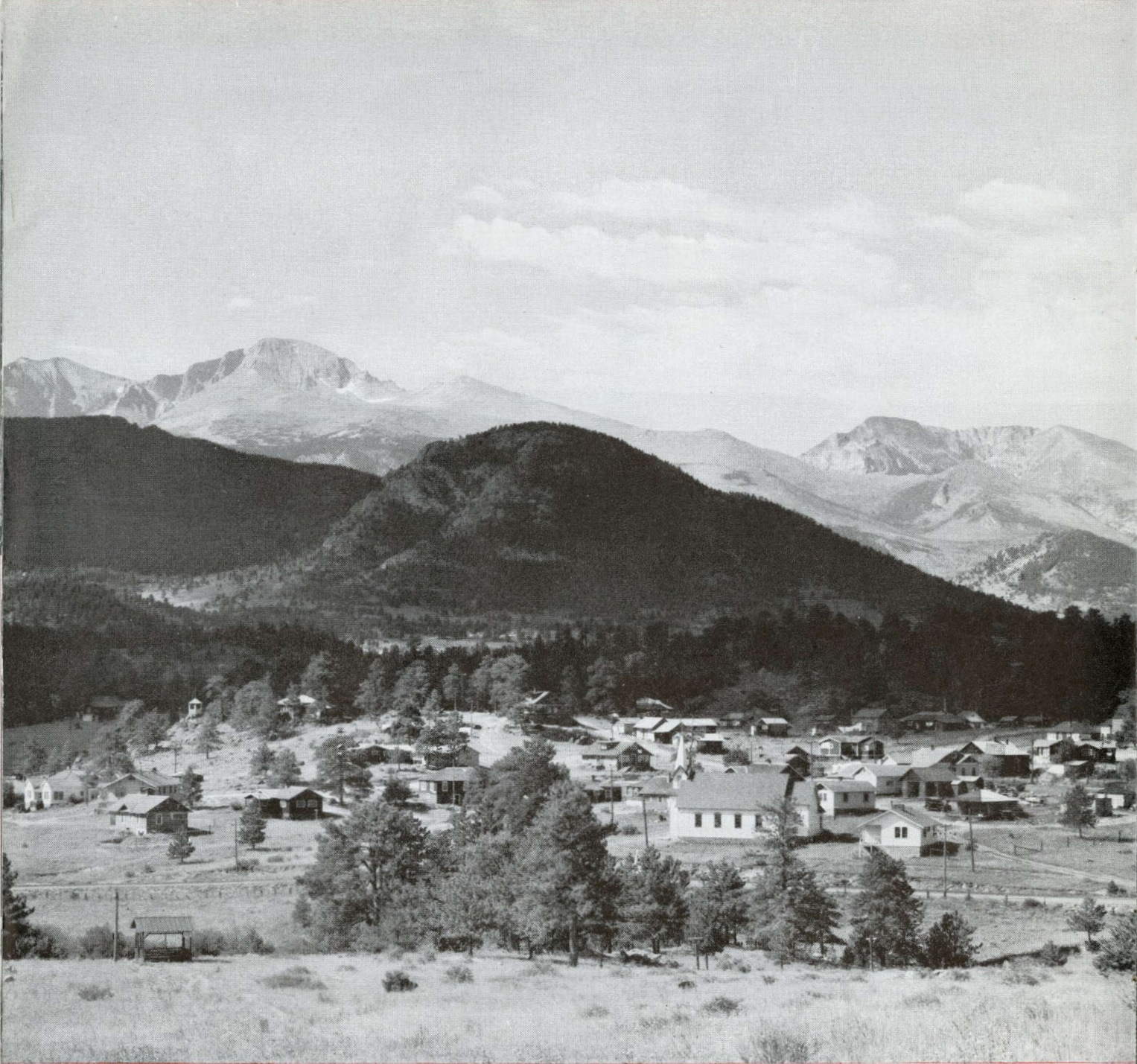
The Cave of the Winds, another natural scenic wonder, is a large underground cavern of some sixteen chambers. The stalactites and stalagmites form jeweled pillars in this electrically lighted underground castle.











Cripple Creek, situated around the south and west slopes of Pikes Peak, is an extremely interesting example of a great mining center. Here was once the greatest mining camp in the world.

### Pueblo

On the south of Colorado Springs is Pueblo, often called the "Pittsburgh of the West," where huge iron and steel mills operate. Pueblo is the



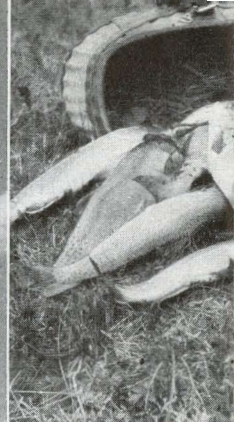
center of a region of great beauty. Fertile fields on one side produce some of the world's finest crops of vegetables and fruits.

The San Isabel National Forest, west of Pueblo, is

a primitive forest nestling at the foot of the rugged, cloud-swept Sangre de Cristo (Blood of Christ) Mountains, named centuries ago by the Spanish conquistadores. Here, too, are huge unexplored





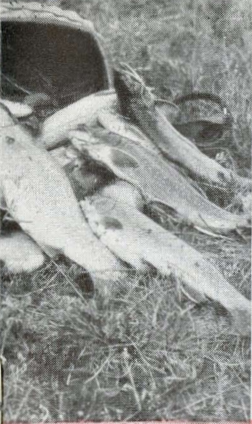


COLO

Vac  
Par



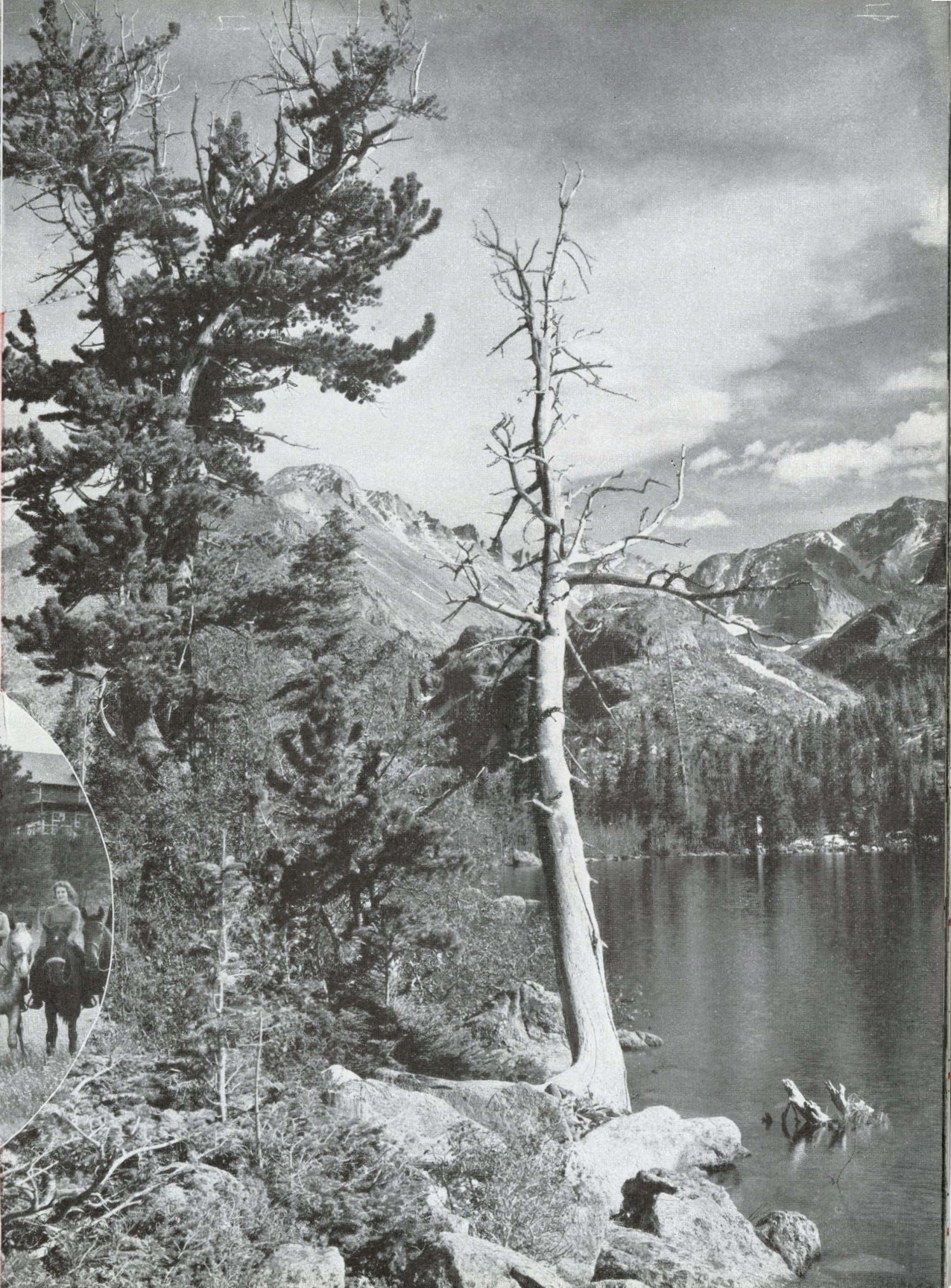




RADO

ation  
adise

—

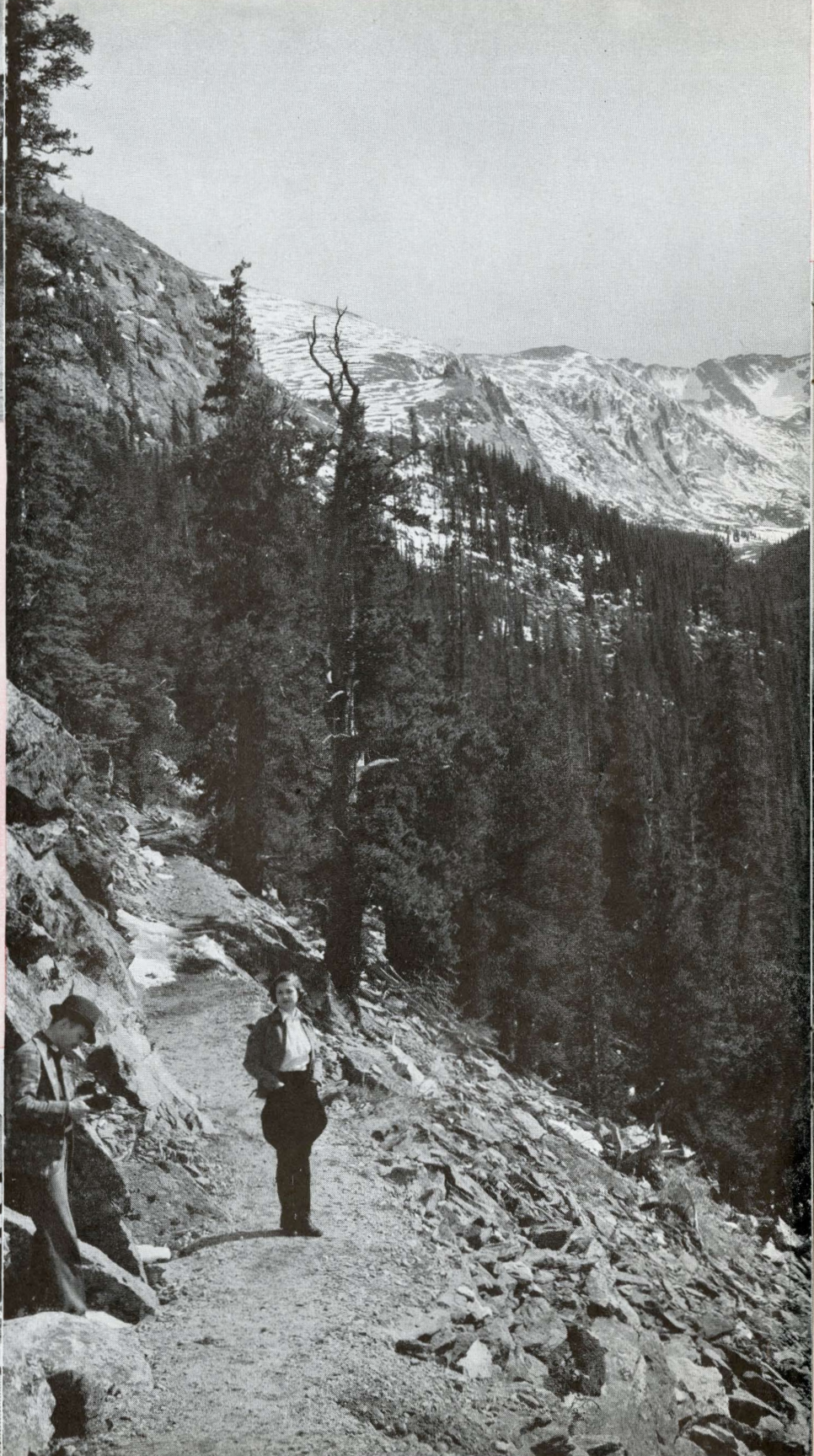
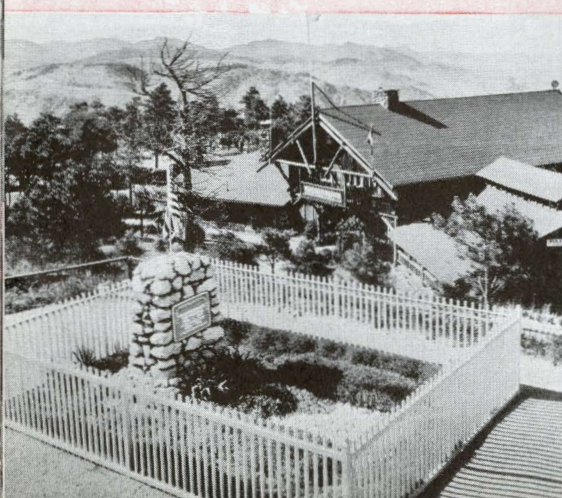




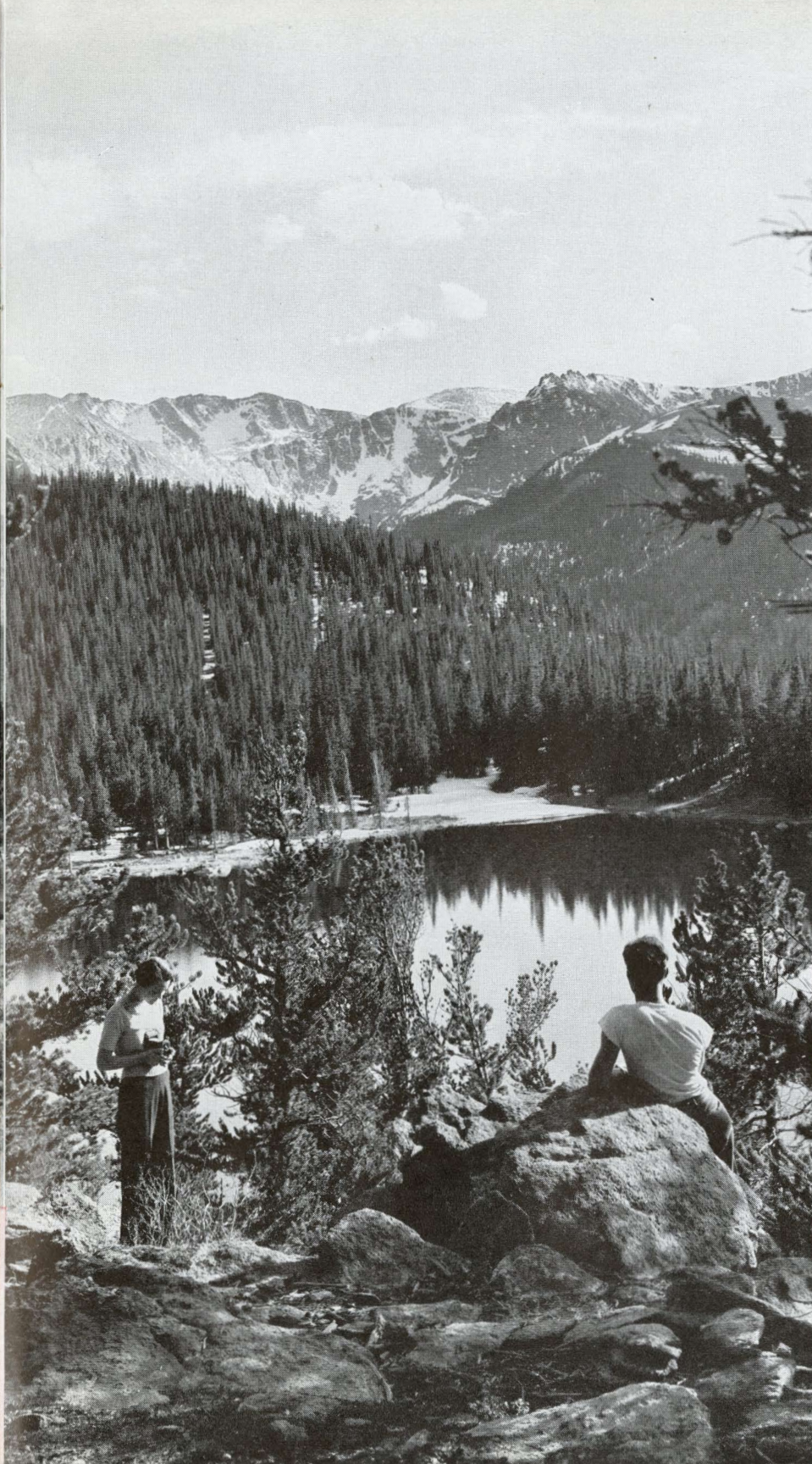


caverns, shifting sand dunes, fishing streams, and bottomless lakes, all threaded together by hundreds of miles of fine motor highways. Auto trips replete with charm and beauty may be taken from Pueblo.

To the west and north of Pueblo is the Royal Gorge, a mighty chasm cut by the Arkansas River and famed the world over for its wild beauty. Over this huge gash in the earth's surface is a suspension bridge which hangs some 1,000 feet above the level of the water. Trains traversing the







gorge pass along a narrow ledge cut from the rugged cliff face at the bottom of the chasm.

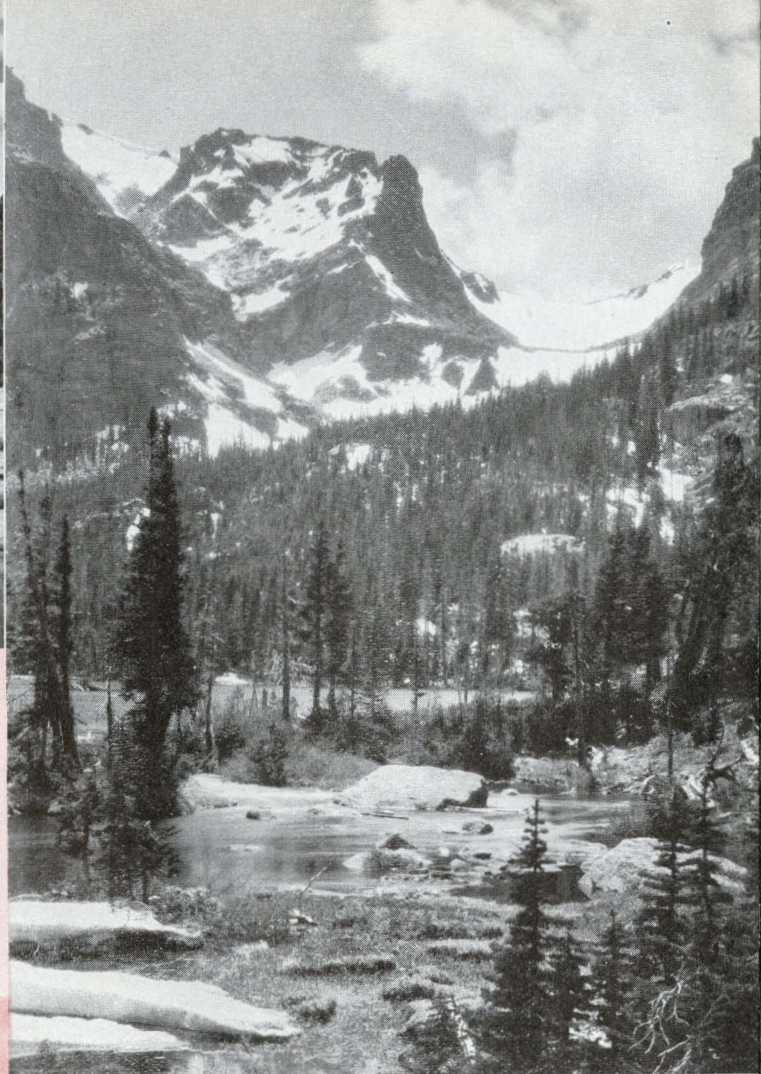
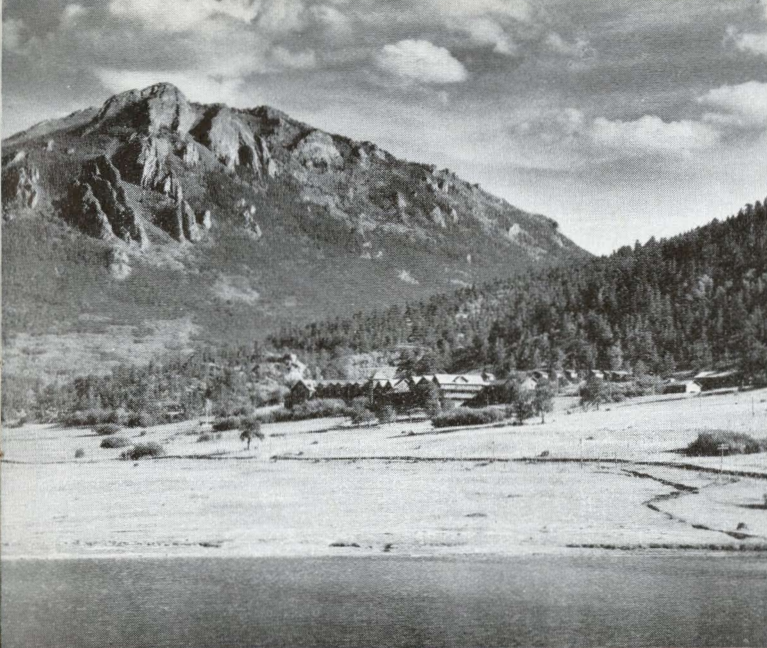
Rocky Mountain National Park, and Estes Park, less than 100 miles north of Denver, are the stellar scenic attractions of the Colorado Rockies and among the most accessible of the national playgrounds. Huge granite sentinels, including Longs Peak, 14,000 feet high; deep canyons, flower-decked mountain valleys, and primeval forests, all accessible by broad highways, provide











the splendid setting for the modern hotels, cottages, and rustic resorts that welcome visitors. These ample accommodations vary in price to meet the needs of any budget. In this natural wonderland there is abundant opportunity to enjoy your favorite sports. Fishing in lakes and streams, horseback riding on well-groomed, carefully trained







mounts; motoring, camping, hiking, golf, tennis . . . these are but a few from the long list of outdoor activities.

Your trip to Rocky Mountain National Park may be arranged to include Boulder and the Big Thompson Canyon, with side trips to the beautiful Boulder Glacier region. Here you see, at close range, several great glaciers clinging to the Continental Divide. Chief among them is sparkling Arapaho Glacier, which supplies the city of Boulder with its water.

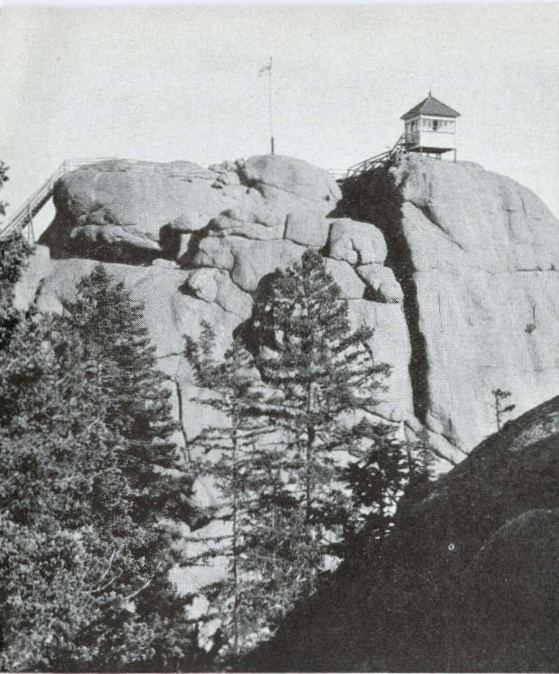
In west-central Colorado stands the Mount of the Holy Cross. An inspirational marvel, ranking among the natural









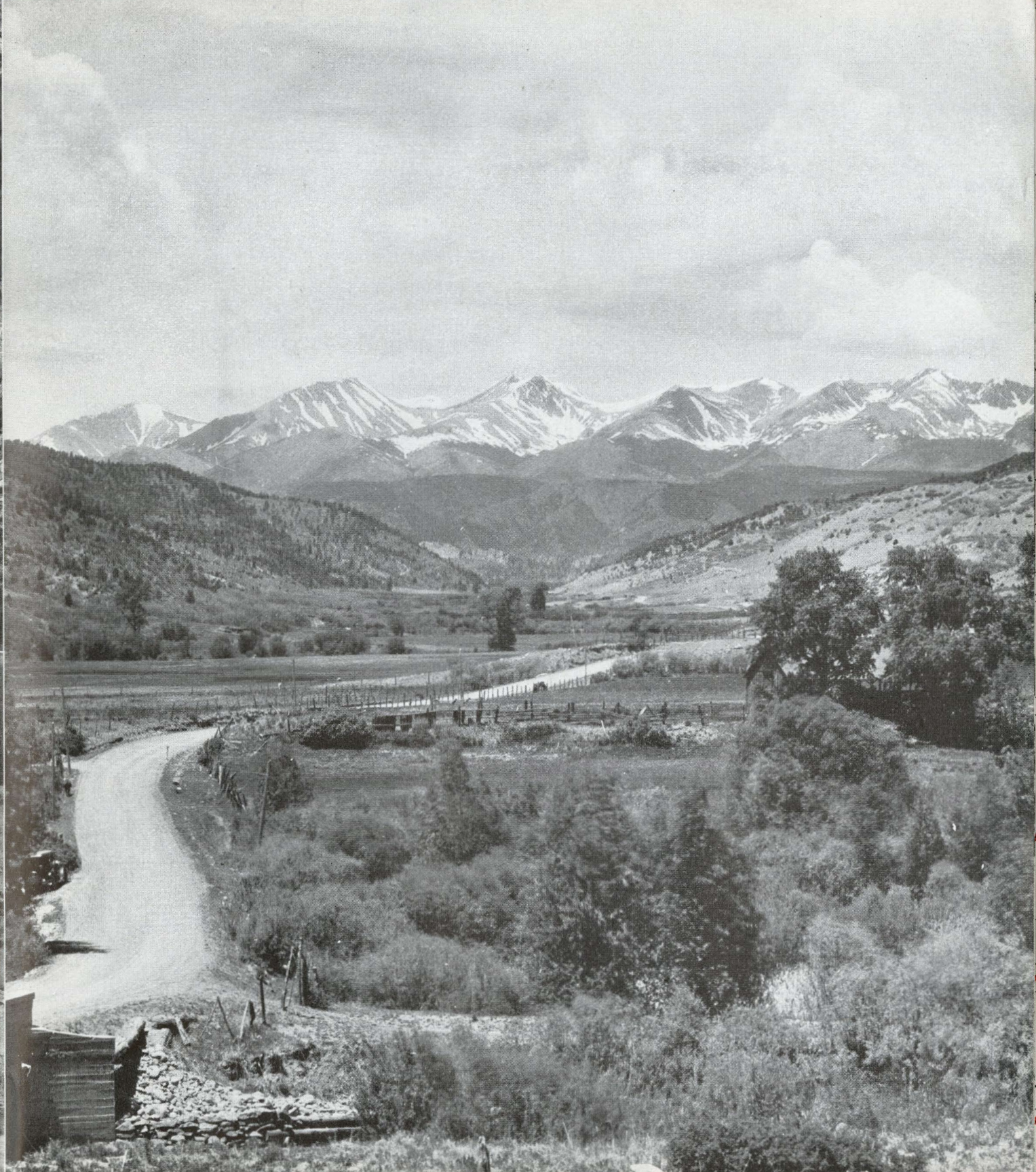


wonders of the world, this mountain bears the emblem of Christianity nature-fashioned in snow upon its steep and rocky sides. Near by in the higher Rockies is Leadville, one of the most famous gold mining towns of the West. Millions of dollars worth of precious metals have been washed from its soil, or dug from the surrounding mountains.

Grande Mesa, in western Colorado, rises a mile above the surrounding landscape. Situated between Glenwood Springs and Delta, its numerous lakes attract anglers the country over. Glenwood Springs, some 300 miles west of Denver, is famed as a resort known for the curative hot mineral waters and huge outdoor hot-water swimming pool within its limits.







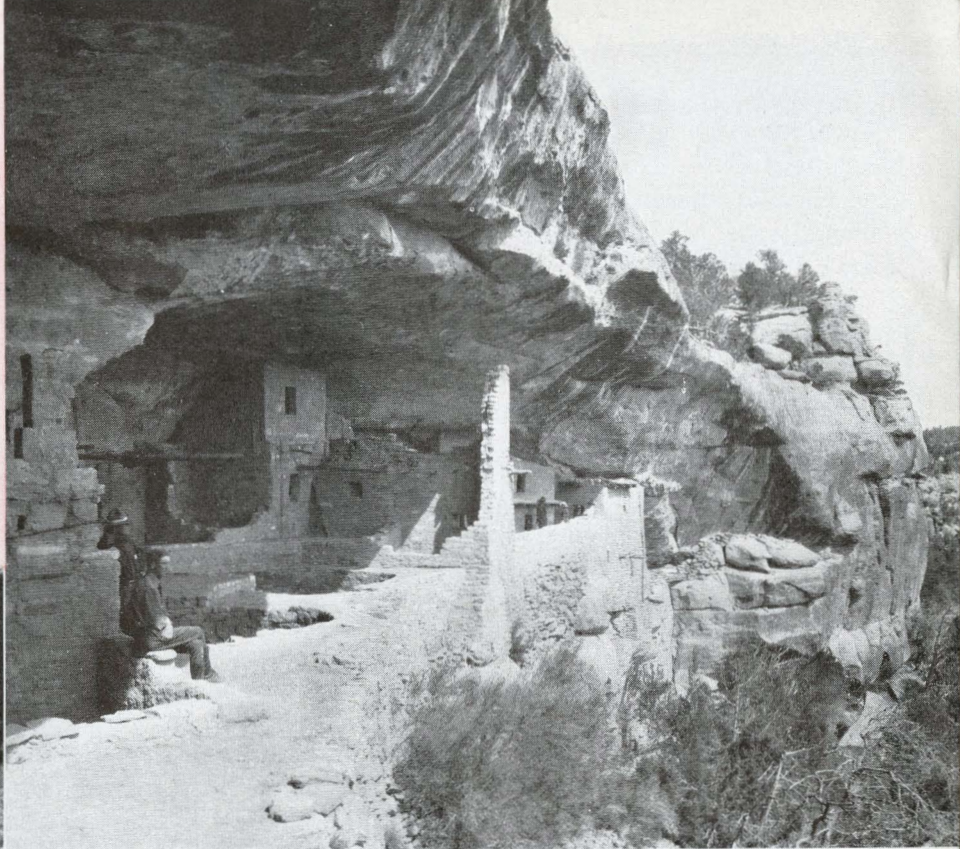




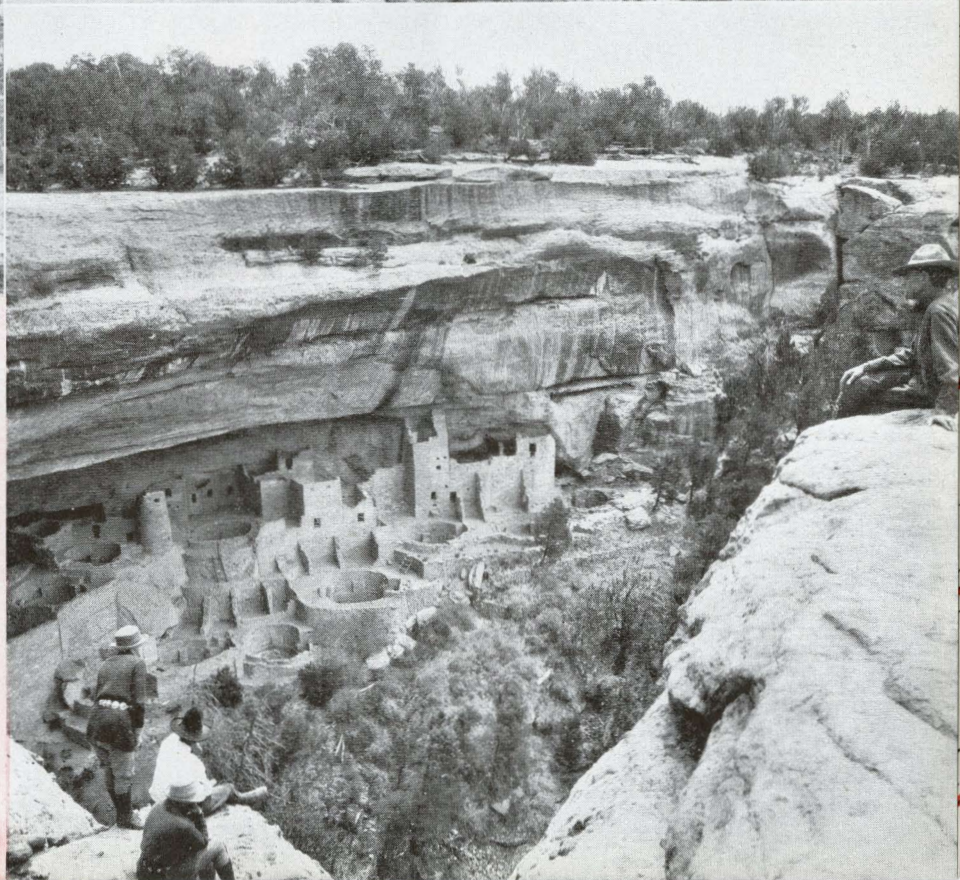


## Mesa Verde

Mesa Verde National Park, in southwestern Colorado, preserves some of the most extensive and spectacular evidences of prehistoric human habitation to be found in North America. One may visit Cliff Palace, in reality an amazing little city built into a gigantic shallow cave high up in a canyon wall; the Sun Temple,



and other curious dwellings and communal structures of a race that attained a high plane of development and culture many centuries ago, and then slipped into oblivion long before the coming of the first white men. The great ruins of Mesa Verde, built in a setting of wild grandeur, are as fascinating to the layman as to



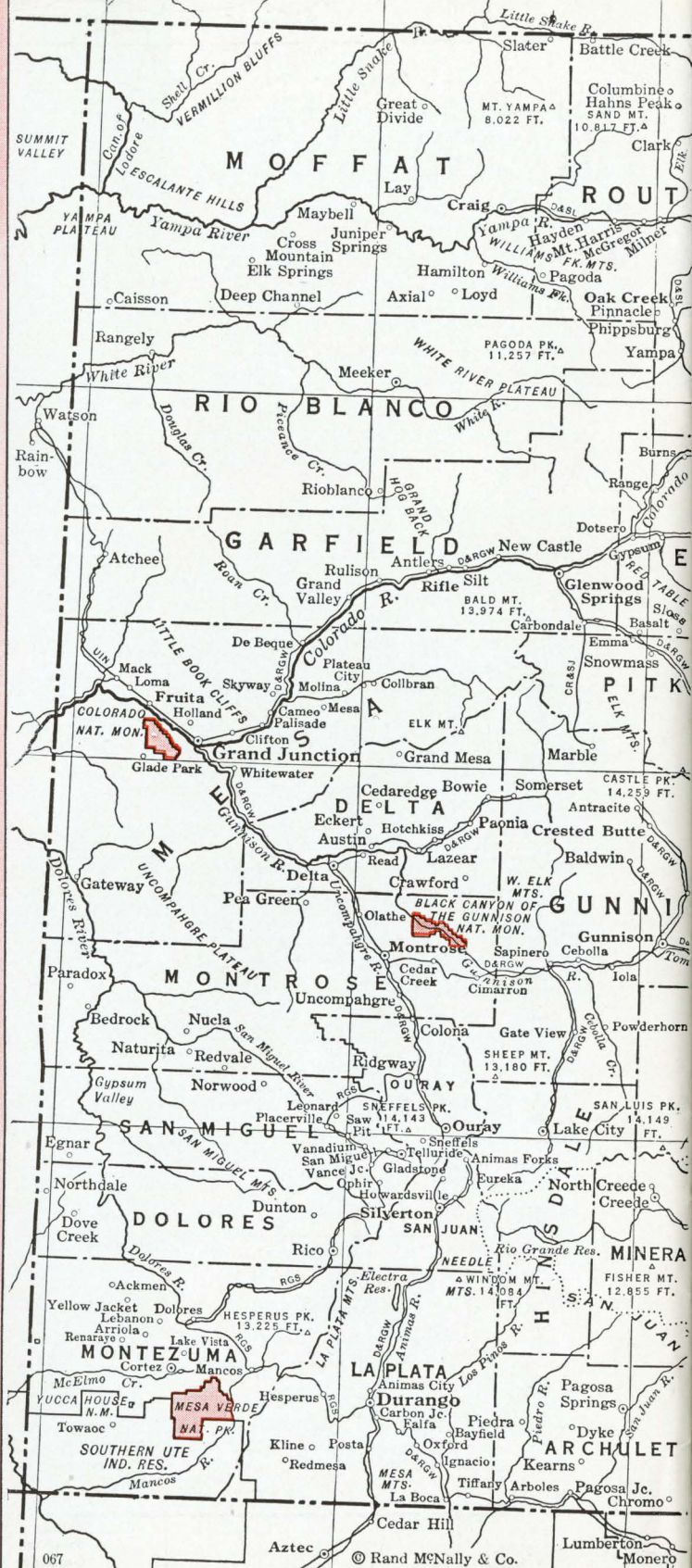


those famous archaeologists whose painstaking studies there have revealed much of the life and habits of these ancient Americans. Mesa Verde may be reached by rail and motor from Colorado points, or by motor from old Santa Fé or Gallup, in New Mexico, both on the Santa Fe transcontinental rail route.

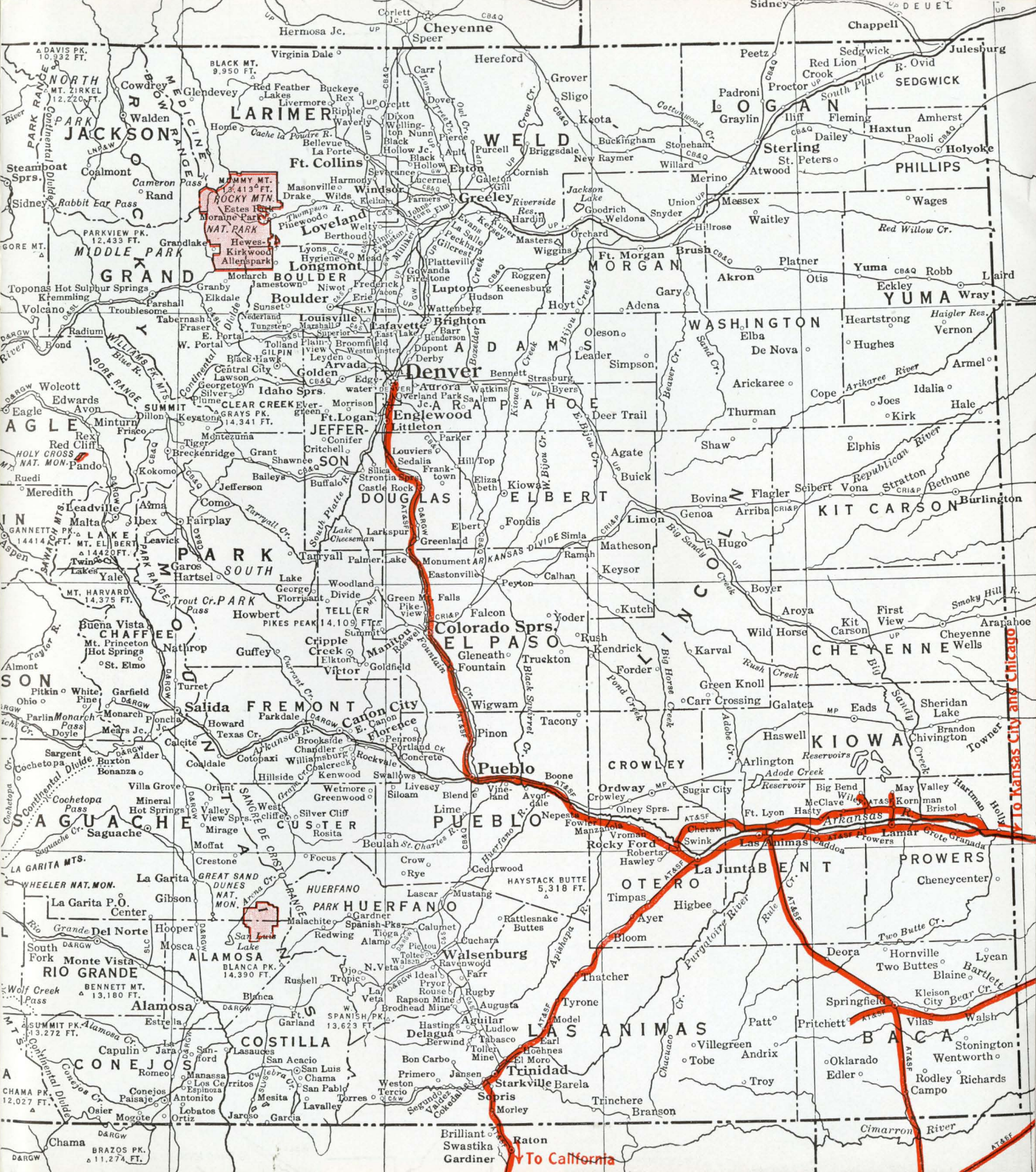
For details on Santa Fe System Lines, see map on inside back cover.



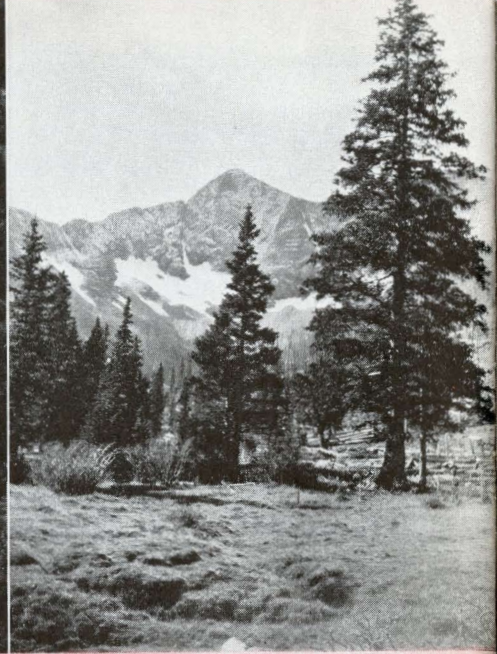
# MAP of COLORADO











## SANTA FE TRAIN SERVICE

The Santa Fe mainline route is historic, exceptionally scenic. From Chicago to Colorado it follows the rich rolling bottomlands of Illinois and Missouri;

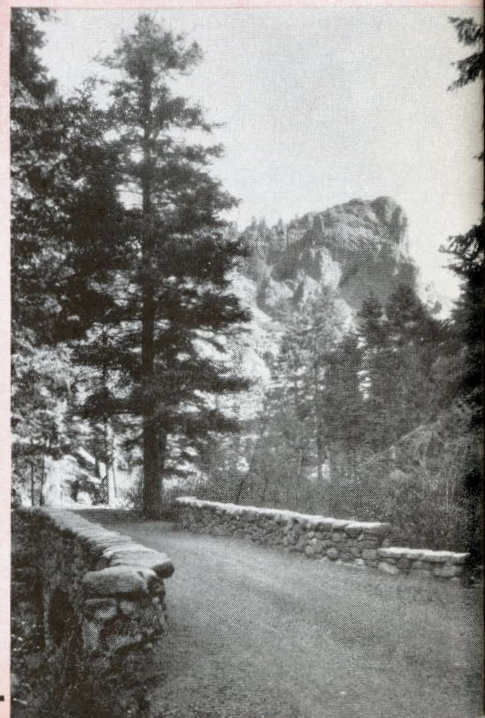
beyond Kansas City it parallels the old Santa Fé Trail across the vast grain fields and ranges of Kansas; climbs into the Colorado foothills to La Junta, where branch line goes north to Pueblo, Colorado Springs and Denver.

undeviating standard of excellence has been maintained in the quality of the food itself, its variety and the cleanliness and attractiveness of its preparation and service.

The Santa Fe offers daily train service between Chicago, Kansas City and Colorado with air-conditioned cars and famous Fred Harvey meal service for the comfort and enjoyment of passengers. There is also excellent service to Colorado, via Santa Fe, from Texas points.

Santa Fe type of air-conditioning provides the cleanliness of washed and filtered air; temperature regulated at will both winter and summer; and the quiet of cars sealed against much of the noise of operation.

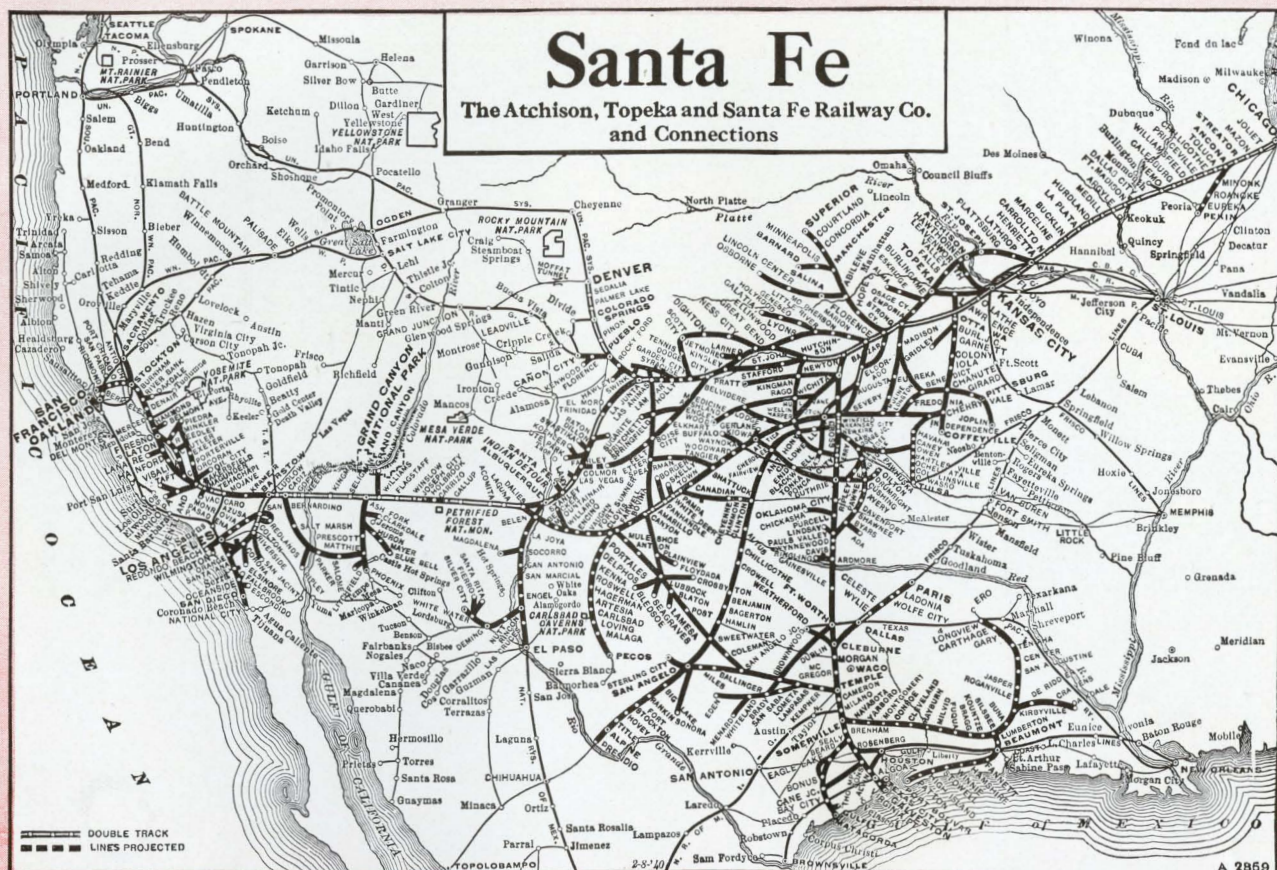
For half a century the service of food on the Santa Fe has been in the hands of Fred Harvey. An





# Santa Fe

The Atchison, Topeka and Santa Fe Railway Co.  
and Connections



## SANTA FE RAILWAY AGENCIES

For information about Pullman rates, train schedules, rail fares, and other information helpful in arranging any western trip via the Santa Fe, apply to your local ticket agent, or address the Santa Fe representative at any one of the agencies named below:

- |  |  |   |  |
|--|--|---|--|
| Amarillo, Tex., General Office Bldg.                   | El Paso, Tex., Cor. San Francisco St. and Pioneer Plaza. | New Orleans, La., 627 Whitney Bldg.             | San Antonio, Tex., 1119 Majestic Bldg.         |
| Atlanta, Ga., 815 Rhodes-Haverty Bldg.                 | Fort Worth, Tex., 808 Houston St.                        | New York City, 500 Fifth Ave.                   | San Bernardino, Calif., Santa Fe Station.      |
| Beaumont, Tex., 643 Orleans St.                        | Galveston, Tex., 411 22nd St.                            | Oakland, Calif., 432 13th St.                   | San Diego, Calif., Corner Fifth Ave. and B St. |
| Berkeley, Calif., 98 Shattuck Square.                  | Glendale, Calif., 107 S. Brand Blvd.                     | Oklahoma City, Okla., 6 So. Robinson St.        | San Francisco, Calif., 235 Geary St.           |
| Boston, Mass., Rooms 4-5 Little Bldg., 80 Boylston St. | Hollywood, Calif., 6405 Hollywood Blvd.                  | Pasadena, Calif., Santa Fe Station.             | San Jose, Calif., 115 So. First St.            |
| Buffalo, N. Y., 201 Ellicott Sq. Bldg.                 | Houston, Tex., 605 Fannin St.                            | Peoria, Ill., 211 Jefferson Bldg.               | San Pedro, Calif., 819 So. Pacific Ave.        |
| Chicago, Ill., 179 W. Jackson Blvd.                    | Indianapolis, Ind., 311 Merchants Bank Bldg.             | Philadelphia, Pa., 302-303 Franklin Trust Bldg. | Santa Ana, Calif., 301 N. Main St.             |
| Cincinnati, Ohio, 703 Dixie Terminal Bldg.             | Kansas City, Mo., 1100 Baltimore Ave.                    | Phoenix, Ariz., 149 N. Central Ave.             | Santa Barbara, Calif., 915 State St.           |
| Cleveland, Ohio, 1105 Terminal Tower Bldg.             | Leavenworth, Kan., 781 Shawnee St.                       | Pittsburgh, Pa., 1222 Gulf Bldg.                | Santa Fe, N. M., On the Plaza.                 |
| Colorado Springs, Colo., Santa Fe Station.             | Long Beach, Calif., 117 Pine Ave.                        | Portland, Ore., 1015 American Bank Bldg.        | Santa Rosa, Calif., 217 Fourth St.             |
| Dallas, Tex., 1116 Commerce St.                        | Los Angeles, Calif., 743 S. Hill St.                     | Pueblo, Colo., 401 N. Union Ave.                | Seattle, Wash., The 1411 Fourth Ave. Bldg.     |
| Denver, Colo., 524 17th St.                            | Mexico City, Mex., Bolivar No. 22-B.                     | Riverside, Calif., Santa Fe Station.            | Tulsa, Okla., 417 S. Boston Ave.               |
| Des Moines, Ia., 601 Equitable Bldg.                   | Milwaukee, Wis., 401 Majestic Bldg.                      | Sacramento, Calif., 1000 10th St.               | Washington, D. C., 525 Shoreham Bldg.          |
| Detroit, Mich., 504 Transportation Bldg.               | Minneapolis, Minn., 211 Metropolitan Life Bldg.          | St. Joseph, Mo., 505 Francis Street.            | Wichita, Kan., 314 Union National Bank Bldg.   |
|  |  | St. Louis, Mo., 296 Arcade Bldg.                | Wichita Falls, Tex., 608 Staley Bldg.          |
|  |  | Salt Lake City, Utah, 606-607 McCormick Bldg.   |  |

## PASSENGER DEPARTMENT OFFICIALS

T. B. GALLAHER, Passenger Traffic Manager, Santa Fe System Lines, Chicago, Ill.

- |   |   |   |
|---|---|---|
| R. T. ANDERSON, Gen. Pass. Agt.<br>A. T. & S. F. Ry.<br>Topeka, Kan.                            | C. C. THOMPSON, Gen. Pass. Agt.<br>A. T. & S. F. Ry.—Coast Lines<br>Los Angeles, Calif. | H. C. VINCENT, Gen'l Pass. Agt.<br>Panhandle and Santa Fe Ry.<br>Amarillo, Tex. |
| L. R. EVERETT, Asst. Gen'l Pass. Agt.<br>A. T. & S. F. Ry.—Coast Lines<br>San Francisco, Calif. | T. H. MURRAY, Asst. Gen'l Pass. Agt.<br>A. T. & S. F. Ry.—Coast Lines<br>Phoenix, Ariz. | A. C. ATER, Gen'l Pass. Agt.<br>G. C. & S. F. Ry.<br>Galveston, Tex.            |



