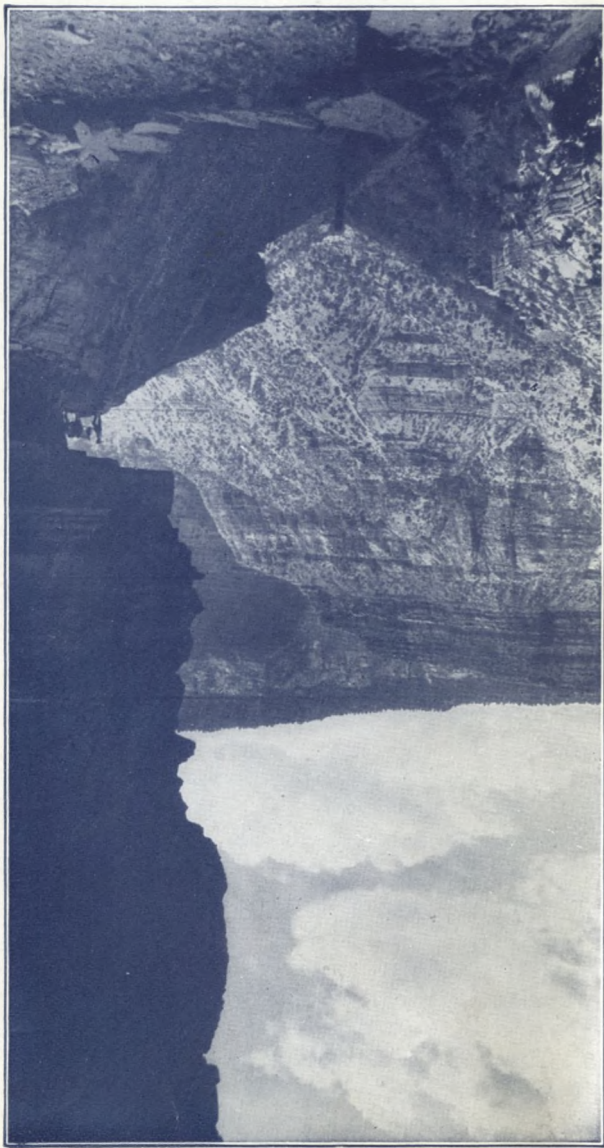
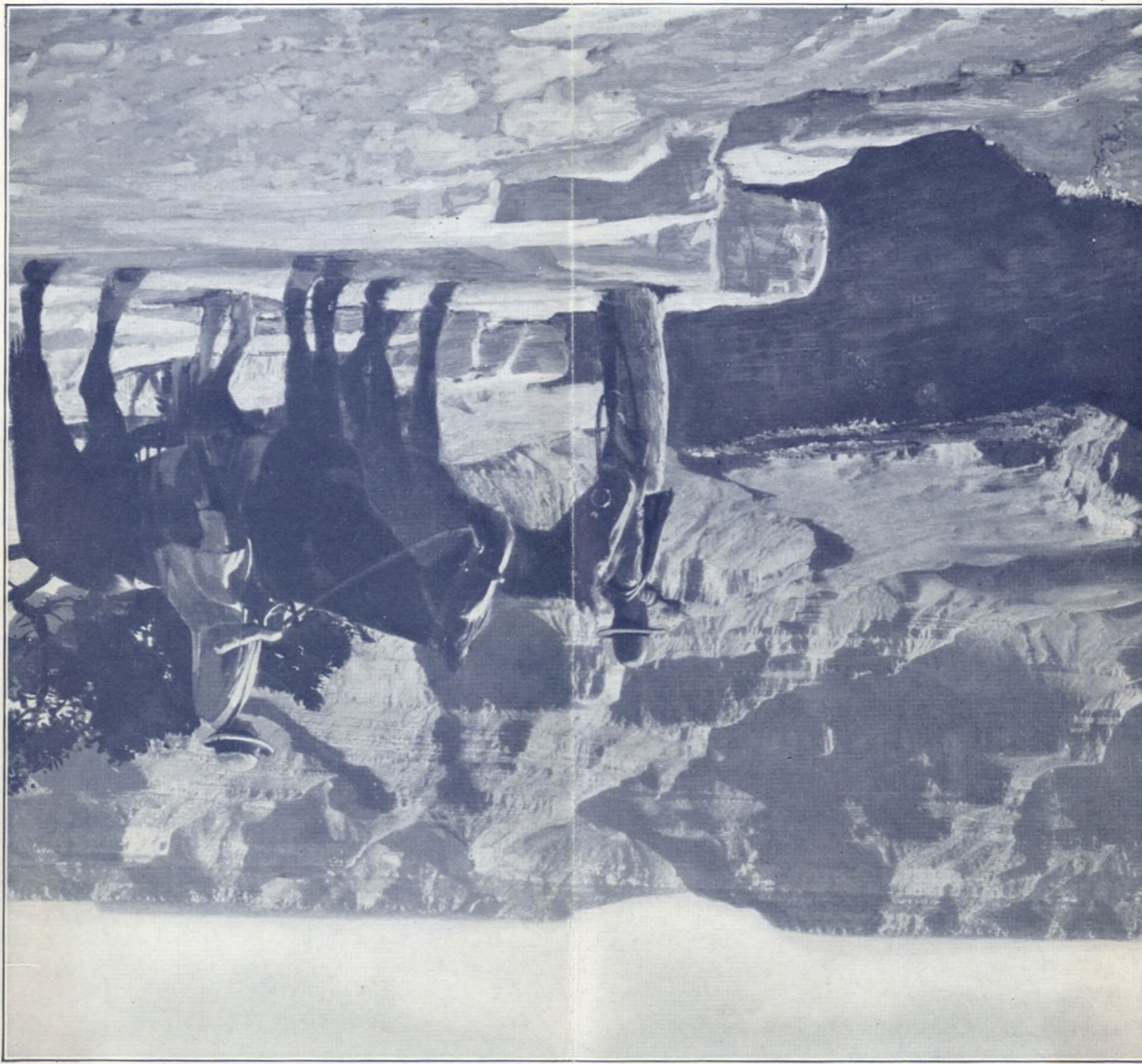


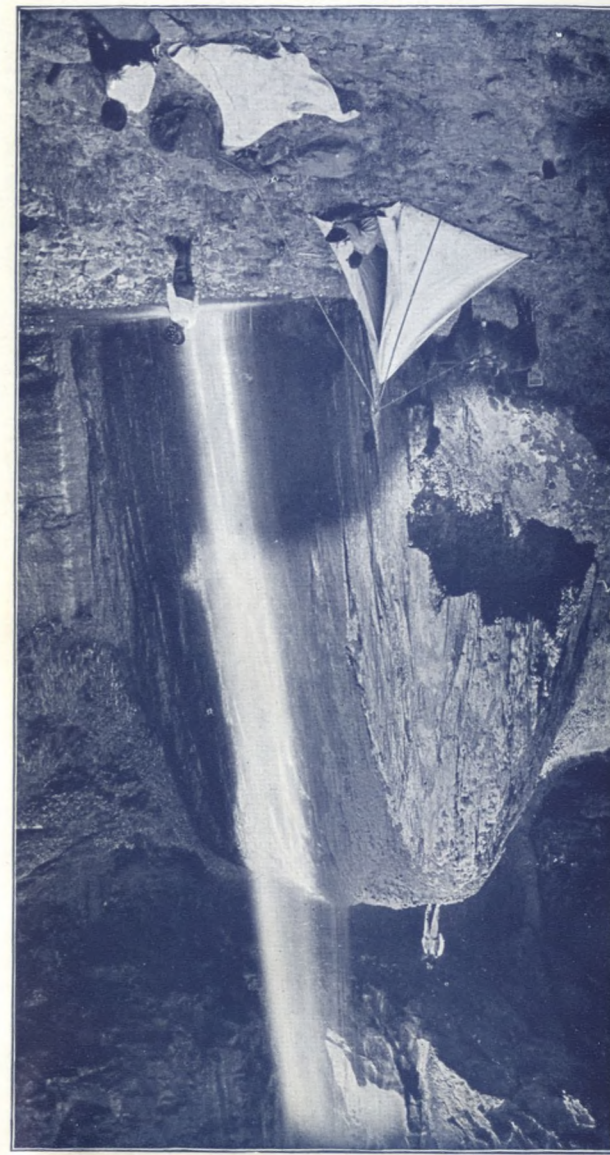
On Trail up Roaring Springs Canyon



Outlook from Grandeur Point, near El Tovar Hotel

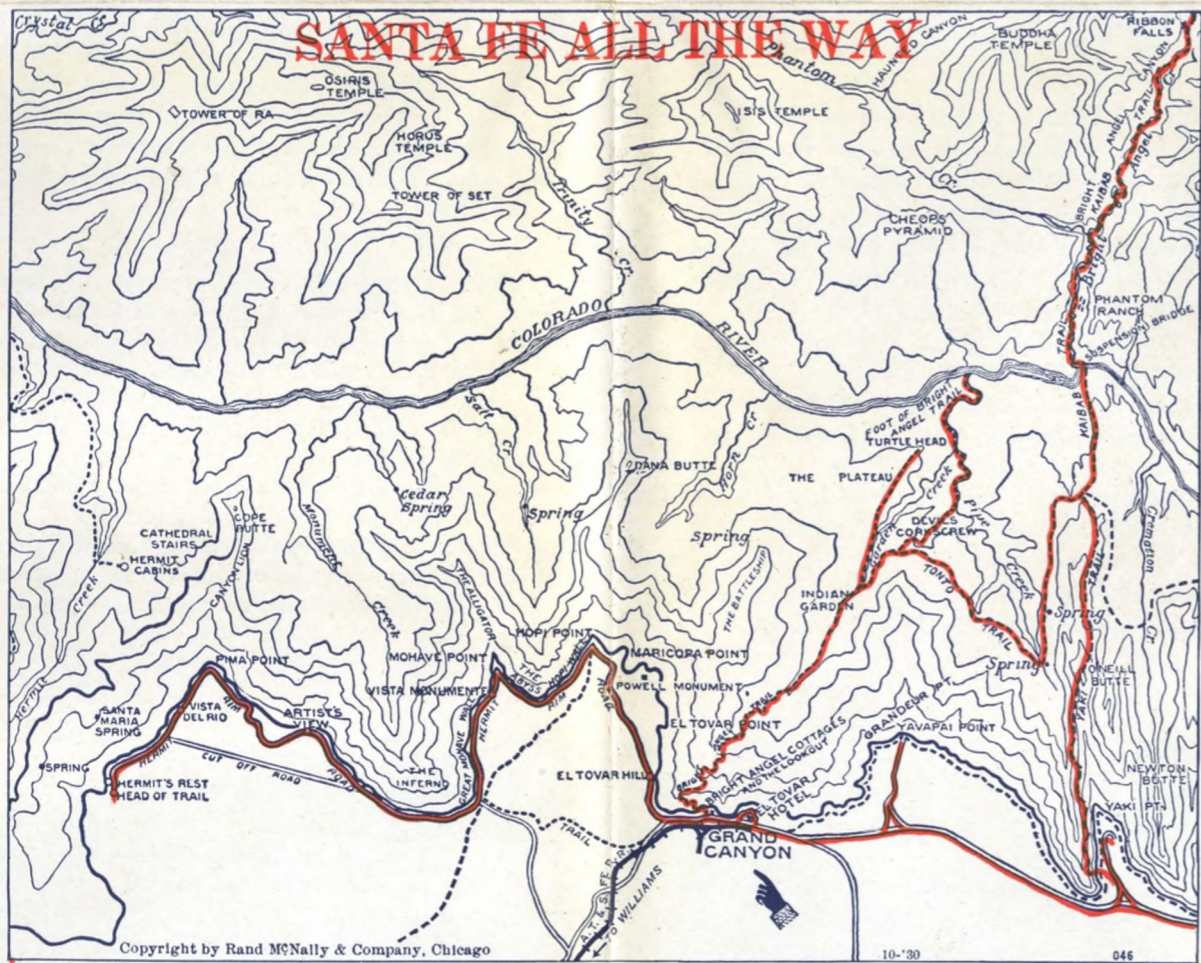


Ribbon Falls near Phantom Ranch



SSS

SSS



SANTA FE REPRESENTATIVES

Alhambra, Calif.	132 W. Main St.
Amarillo, Tex.	General Office Bldg.
Atlanta, Ga.	330 Rhodes-Haverty Bldg.
Bakersfield, Calif.	Santa Fe Station
Beaumont, Tex.	Hotel Beaumont Bldg., 643 Orleans St.
Boston, Mass.	212 Old South Bldg.
Buffalo, N. Y.	692 Ellicott Square Bldg.
Chicago, Ill.	179 W. Jackson St.
Cincinnati, Ohio	703 Dixie Terminal Bldg.
Cleveland, Ohio	1105 Terminal Tower Bldg.
Colorado Springs, Colo.	118 E. Pikes Peak Ave.
Dallas, Tex.	1116 Commerce St.
Denver, Colo.	524 17th St.
Des Moines, Iowa	601 Equitable Bldg.
Detroit, Mich.	504 Transportation Bldg.
El Paso, Tex.	213 E. San Antonio St.
Fort Worth, Tex.	112 E. 9th St.
Fresno, Calif.	Santa Fe Station
Galveston, Tex.	411 Twenty-second St.
Glendale, Calif.	107 So. Brand Blvd.
Highland Park, Calif.	Santa Fe Station
Hollywood, Calif.	6405 Hollywood Blvd.
Houston, Tex.	904 Texas Ave.
Indianapolis, Ind.	311 Merchants Bank Bldg.
Kansas City, Mo.	719 Walnut St.
Leavenworth, Kan.	406 Delaware St.
Long Beach, Calif.	220 W. Ocean Ave.
Los Angeles, Calif.	743 So. Hill St.
Mexico City, Mex.	Cante 4, Desp. 401
Milwaukee, Wis.	401 Majestic Bldg.
Minneapolis, Minn.	211 Metropolitan Life Bldg.
New Orleans, La.	601-602 Whitney Bldg.
New York City, N. Y.	505 Fifth Ave. (Second floor)
Oakland, Calif.	432 13th St.
Oklahoma City, Okla.	6 S. Robinson St.
Peoria, Ill.	211 Jefferson Bldg.
Philadelphia, Pa.	302-3 Franklin Trust Bldg.
Phoenix, Ariz.	149 No. Central Ave.
Pittsburgh, Pa.	1222 Gulf Bldg.
Pomona, Calif.	261 S. Thomas St.
Portland, Ore.	508 Spalding Bldg.
Pueblo, Colo.	401 N. Union Ave.
Riverside, Calif.	Mission Inn
Sacramento, Calif.	1006 K. St.
St. Joseph, Mo.	114 S. Fifth St.
St. Louis, Mo.	296 Arcade Bldg.
Salt Lake City, Utah	508 Clift Bldg.
San Antonio, Tex.	529 Majestic Bldg.
San Diego, Calif.	U. S. Grant Hotel Block
San Francisco, Calif.	601 Market St.
San Jose, Calif.	15 E. Santa Clara St.
San Pedro, Calif.	121 7th St.
Santa Ana, Calif.	408 No. Sycamore St.
Santa Barbara, Calif.	915 State St.
Santa Rosa, Calif.	516 Fourth St.
Seattle, Wash.	The 1411 Fourth Ave. Bldg.
Stockton, Calif.	Hotel Stockton Annex
Tulsa, Okla.	Atlas Life Bldg., 417 S. Boston Ave.
Waco, Tex.	507 First State Bank Bldg.
Whittier, Calif.	125 North Greenleaf St.
Wichita, Kan.	Room 501, Sedgwick Bldg.

W. J. BLACK, Passenger Traffic Manager, A. T. & S. F. Ry. System, Chicago, Ill.

E. J. SHAKESHAF, General Passenger Agent, A. T. & S. F. Ry.—Topeka, Kans.

JAS. B. DUFFY, Asst. Pass. Traf. Mgr. A. T. & S. F. Ry.—Coast Lines, Los Angeles, Calif.

F. L. HANNA, Assistant Gen. Pass. Agent, A. T. & S. F. Ry.—Coast Lines, Phoenix, Ariz.

T. B. GALLAHER, General Passenger Agent, Panhandle and Santa Fe Ry., Amarillo, Tex.

E. F. ADAMS, General Passenger Agent, G. C. & S. F. Ry., Galveston, Texas.

Stop Off and visit —



Grand Canyon National Park

The Santa Fe is the only railroad to Grand Canyon National Park



— March 1932 —



Outing Party Leaving El Tovar Hotel



Hermit's Rest—on Hermit Rim Road



In Coconino Forest on South Rim



New suspension bridge across Colorado River near Phantom Ranch



A glimpse of Canyon from near Grand View Road



Gorge of Little Colorado River on Navahopi Road

## Scenic Wonder of the World

**G**RAND Canyon National Park is reached by daily trains from Williams, on the Santa Fe main line in Arizona.

The chasm of the Grand Canyon has a length of 217 miles. Its greatest vertical depth is about 6,000 feet and its width, at the point to which visitors are conducted, is 13 miles.

The climate on the south rim is cool in summer and generally mild in winter. A Grand Canyon outing, therefore, is feasible at any time of the year.

### THE SIDE TRIP

The Canyon side trip is quickly made on a branch of the Santa Fe. This line is built from Williams north 64 miles to the rim near the head of Bright Angel Trail.

Daily train service between Williams and Grand Canyon, a trip of about three hours each way. Connections are made with nearly all main line trains. Some of these branch trains carry parlor car in addition to the usual coaches.

**Daily through Pullmans between Chicago and California—both east and west bound—are operated via Grand Canyon on certain trains.**

**Stop-over** not to exceed ten days is granted at Williams on all classes of railroad tickets for a visit to the Canyon. Apply in advance to train conductors. Limits of through railroad tickets will be extended, if necessary, by agent at Grand Canyon.

**Baggage** storage charges accruing at Santa Fe stations account Grand Canyon side trips are waived on presentation of side trip certificate obtained at Grand Canyon.

**Railroad Fare.** Through tickets may include side trip coupons, Williams to Grand Canyon and return, at an additional charge of \$9.12.

**Pullman Fares.** Through Pullman tickets may be had via the Grand Canyon at an additional charge, including surcharge, of \$4.50 for lower berth—proportionately higher for compartment or drawing-room.

### HOTEL ACCOMMODATIONS

**El Tovar**, the Santa Fe hotel at Grand Canyon, is under Fred Harvey management. It is located on the rim near the railway terminus. The hotel is built in rustic style and contains ninety-three sleeping rooms. The cuisine is Harvey's best. Every modern convenience is provided.

The hotel is conducted on American plan, i.e., room and meals both included. Room without bath, \$7.00 a day each person; room with bath, \$9.00 and \$10.00 each person. A reduction of 50 cents per day each person is made when two persons occupy one room with double bed. A few rooms with bath carry a higher rate. Meals only: breakfast \$1.25, luncheon \$1.50, dinner \$1.75.

**Bright Angel Cottages** are operated as an adjunct to El Tovar, under Harvey management, on European plan. Rooms, in cottage or tent, \$1.50 to \$2.00 a day, each person; meals at cafe, a la carte.

Harvey Indian exhibits are placed in the Hopi House, occupied by Indians and adjacent to El Tovar.

Grand Canyon passengers who stop off between trains at Williams will find excellent service at the station hotel, Fray Marcos, managed by Fred Harvey; meals at cafe, a la carte.

### COMBINATION MOTOR TOURS

No. 1. Combination ticket to cover Hermit Rim Drive in morning and Desert View in afternoon. Rate, \$9.00. (Regular rates \$11.00.)

No. 2. Combination ticket to cover Hermit Rim Drive and Desert View Drive on first day as above and Moencopi Indian Village Drive on second day. Rate, \$22.00. (Regular rates, \$27.00.)

This trip may be discontinued at any time, as road is under construction. Inquire of Transportation Agents at El Tovar and Bright Angel Hotels.

### RIM ROADS AND TRAILS

**Hermit Rim Road**, to head of Hermit Trail, is a macadamized driveway built west along the rim, close enough to give views of the chasm below. Hermits Rest, at end of rim road, provides shelter and light refreshments. Round-trip, 16 miles. Rate, \$3.00 each person.

**Painted Desert View.** At this point there is a far outlook westward down the river and northward up the river, with a panorama of the Painted Desert, toward Hopiland. Round-trip, 52 miles. Rate, \$8.00 each person.

**Grand View** is twelve miles east of El Tovar. The round-trip by auto through the pines and along the rim is made in less than four hours. Rate, \$4.00 each person.

**Navahopi Road.** From May to November motor trips will be operated from El Tovar over the new Navahopi Road to Tuba City, capital of the Western Navajo Reservation, and to Moencopi, a Hopi Indian pueblo.

The Navahopi Road opens up a little known region and affords visitors a glimpse of the vast Southwestern Indian reservations. Fifty miles of the awesome Canyon of the Little Colorado and a 100-mile panorama of the Painted Desert are but a few of the interesting things to be seen.

One-day trip—\$16.00 each person all-expense. Round-trip, 160 miles. Note—This trip may be

discontinued at any time on account of road conditions.

### INNER-CANYON TRAIL TRIPS

Trail trips into the inner Canyon may be made the year around. Saddle animals, guides, meals and accommodations provided by Fred Harvey. Detailed information and all facilities through Transportation Department, El Tovar Hotel.

**Phantom Ranch—Roaring Springs.** Phantom Ranch is in Bright Angel Canyon, near junction of Bright Angel Creek and Colorado River and 4,500 feet below south rim. From El Tovar via Yaki and Kaibab Trails and return. Two days. All-expense rate, \$22.00 each person. Optional side trip to Ribbon Falls adds one day; total all-expense rate, \$33.00.

**Bright Angel Trail to Colorado River—One day.** Round-trip rate, \$6.00 each person, including lunch.

Across-Canyon all-expense trail trips may be made from Rim to Rim—one-way rate, \$30.00; round-trip, \$60.00. These charges do not include meals or lodging either on North Rim or South Rim, but only expenses while en route. Twenty-five pounds free baggage allowance. Summer season only.

### MISCELLANEOUS

**Time Required.** This greatest of world wonders is more than a "look and leave" spectacle. The National Park Service recommends that visitors remain several days. A week permits two days by motor along the rim and through the Navajo and Hopi country; a day for rest or riding in the pines—and an unforgettable experience in the Canyon depths via the Phantom Ranch—Ribbon Falls three-day trail trip.

**Illustrated folder**, describing Grand Canyon National Park, may be obtained from any Santa Fe representative named on back cover page.



On Tonto Trail—Inner Canyon



Phantom Ranch



The Colorado River at foot of Bright Angel Trail



On Yaki Trail to Phantom Ranch