

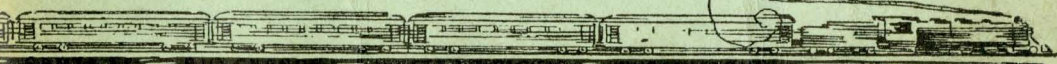
Escorted ALL EXPENSE Tours

Via

DENVER
COLORADO SPRINGS
ROYAL GORGE
SALT LAKE CITY
FEATHER RIVER
CANYON
SAN FRANCISCO
YOSEMITE
RIVERSIDE
LOS ANGELES
SAN DIEGO
TIJUANA
GRAND CANYON
INDIAN-DETOUR

Summer
1929

to California



BURLINGTON

RIO GRANDE

WESTERN PACIFIC

SANTA FE

ESCORTED TOURS
TO
CALIFORNIA

"VACATIONS WITHOUT A CARE"
All-Expense Plan



Two and three weeks' tours to California



Three and four weeks' tours to the Pacific
Northwest and California



Three and four weeks' tours to Yellow-
stone, Colorado, and California



Hawaiian Tours



All these tours include the Grand Canyon
of Arizona

Organized and Operated by

BURLINGTON ROUTE
SANTA FE LINES



*The graceful Yosemite Falls plunges more than half a mile
in its three leaps from the rim to the Valley floor.*

CALIFORNIA IN THE SUMMER

LOTS of people think of California as a nice place to go in the winter time, and so it is. Indeed it would be hard if not impossible to find a nicer place to go—winter or summer. But here's a curious thing that may come as a surprise to some. *There are ten times as many vacationers visit California in the summer time as in the winter.*

Figures like that rather speak for themselves. They speak convincingly of a pleasant land where green things stay green, where flowers abound in a profusion that challenges the imagination, crowding each other to the very curbs, and trailing up to the house-tops. They speak of summer days that average cooler and far less humid than those back home, and of enchanted nights cooled by breezes that ride in from the sea as surely as the surf itself.

It's unbelievably clean, green and —*Oh so pleasant!* On one hand a hundred miles of beach beckon; on the other the mountains invite you to hit the trail to the high places; everywhere is gayety, entertainment, eye-filling beauty—a place to play out-of-doors, to be happy, to enjoy life at its best and stay young.

But why go on? Everybody knows plenty of reasons for going to California, if and when it can be managed, so we'd like to address ourselves especially to those for whom "when" means this summer.

The Burlington and Santa Fe Railroads again this summer will conduct a series of traveling house parties to California and back on the all-expense, escorted plan—nine tours of three-weeks' duration and four two-week tours. Everything is to be planned in advance and everything paid in advance in a lump sum which includes railroad fare, Pullmans, hotel accommodations, motor transportation, all meals, sightseeing, side trips,—in short every necessary item of expense.

An escort and tour manager does all the work and also all the worrying—if any is to be done. There are no Pullman or hotel reservations to make, no baggage to check, no bother with time tables, no bags to carry. Traveling is done in special Pullmans on fast trains, hotel rooms are assured; meals arranged for in advance. Everything is planned beforehand right down to the last detail.

We go to California via the famous daylight scenic route through Denver, Colorado Springs, the Royal Gorge, the Colorado Rockies, Salt Lake City, and the Feather River Canyon—a trip that reveals the most spectacular panorama of mountain scenery accessible by rail travel—and return through the colorful Southwest by way of the Grand Canyon of Arizona.



*A view of the Snowy Range
as seen from Denver*



*The thrilling motor road to the top
of Cheyenne Mountain*

Even a glance at the itinerary on the following pages will show that these plans embrace the most interesting things to do and sights to see, and show too that very special attention has been given to the matter of sightseeing and entertainment enroute both on the west bound trip and coming back.

We cordially invite you to go to California with us; to abandon all the perplexities of travel; enter into the holiday spirit that prevails throughout every day—to have a good time with us—a “*vacation without a care.*”

You will enjoy yourself—*have a good time*—on one of these tours. They represent a sound, sensible travel plan that is not an experiment in any sense, and the resources and the reputation of the railroads stand squarely behind them.

We are ready to give you as references a long list of satisfied patrons who will tell you that the “escorted tour” idea deserves your consideration in connection with any vacation plan, and especially in case you go alone, these traveling house-parties are ideal, assuring many congenial acquaintances with much in common. You travel without any responsibilities, you see the most, in the best way and with no waste of time.

Colorado—California—Grand Canyon

TOUR P... 21 Days

Leaving Chicago Sundays, June 2, 16, 30, July 7, 14, 21, 28, Aug. 4, 11
Leaving St. Louis Saturdays, June 1, 15, 29, July 6, 13, 20, 27, Aug. 3, 10
(See calendar schedule on Page 10)

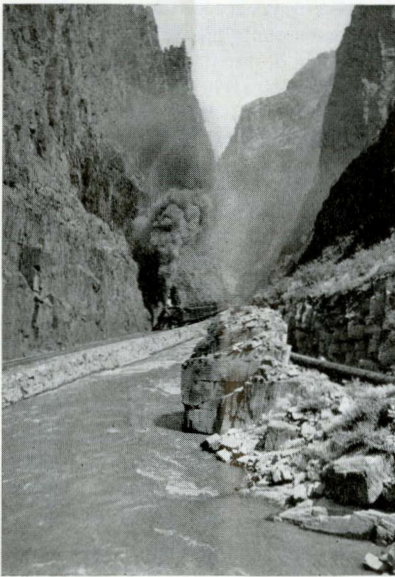
THE TOUR DAY-BY-DAY

Sunday—1st Day—Leave Chicago Union Station on the Burlington at 10:30 A. M., crossing the Mississippi River into Iowa at Burlington in mid-afternoon, and wheeling pleasantly through the "land where the tall corn grows" during the balance of the day, reaching Omaha at 11:30 P. M.

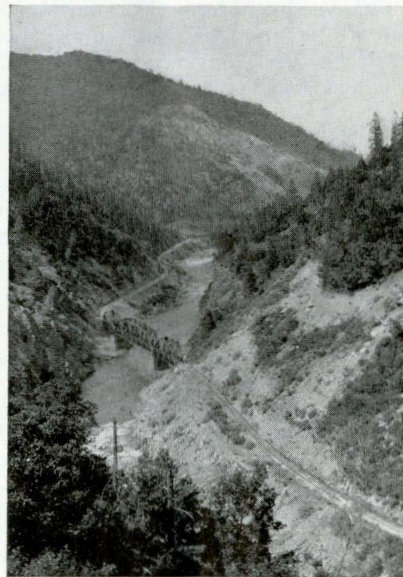
The St. Louis contingent leaves on the Burlington at 9:01 P. M. Saturday, reaching Kansas City at 7:30 A. M. Sunday and stopping here for three hours during which we make a boulevard sight seeing trip by motor, continuing in the afternoon through eastern Nebraska via Lincoln.

Monday—2nd Day—This morning the Chicago party crosses western Nebraska and eastern Colorado, with a first view of the Rocky Mountain skyline about noon, and reaches Denver at 1:10 P. M. Meantime the St. Louis party reached Denver at 7:15 this morning and joins the Chicago party upon its arrival whereupon the whole crowd starts off for an interesting motor trip around metropolitan Denver to see the U. S. Mint, the golden-domed State Capitol, the beautiful Civic Center, Colorado Museum of Natural History, the parks, boulevards and many other attractions.

After dining at the Shirley-Savoy, we leave early in the evening



One of the mightiest chasms in the world. Colorado's Royal Gorge



*In the Feather River Canyon
—100 miles long*

Tuesday—3rd Day—and wake up in Colorado Springs, the City of Sunshine. We motor to the Broadmoor for breakfast and then go for a sightseeing tour by motor up over the thrilling road to the top of Cheyenne Mountain, returning through the Garden of the Gods to Colorado Springs.

Leave later in the morning on the Rio Grande for a big day in the mountains. Early in the afternoon we reach the wonderful Royal Gorge where a special stop is made at the narrowest point for a close-up view of this titanic canyon whose walls here rise sheer almost half a mile.

We are in the mountains all this day—first climbing up the east slope of the Continental Divide; over the roof of the continent at Tennessee Pass, then down the west slope of the Divide, through Eagle River Canyon and the Canyon of the Grand River—a thrilling daylight train ride through the very heart of the Colorado Rockies.

Wednesday—4th Day—We reach "The Promised Land" early in the morning, pulling into Salt Lake City soon after breakfast and boarding motors for a sight seeing tour embracing Temple Square, the Mormon Temple, State Capitol, residence and business sections, ending up at the noon-day organ recital in the Mormon Tabernacle.

Then back to our Pullmans for an interesting afternoon on the Western Pacific Ry., through the immense salt beds bordering Great Salt Lake, and out into the Great American Desert.

Thursday—5th Day—Another day of scenic enjoyment, riding for several hours in the morning through the great Feather River Canyon of the Sierra Nevada Mountains, and later through the wonderful fruit ranches of the Sacramento Valley, reaching San Francisco in the late afternoon and putting up at the St. Francis Hotel which will be our headquarters while here.

Friday—6th Day—This morning is left open in which to do as we please, but afternoon brings a thirty-mile motor drive embracing the Presidio, Lincoln Park, Golden Gate Park, Cliff House, Ocean Beach, Japannese Tea Garden, Twin Peaks, Civic Center and all the other interesting sights.

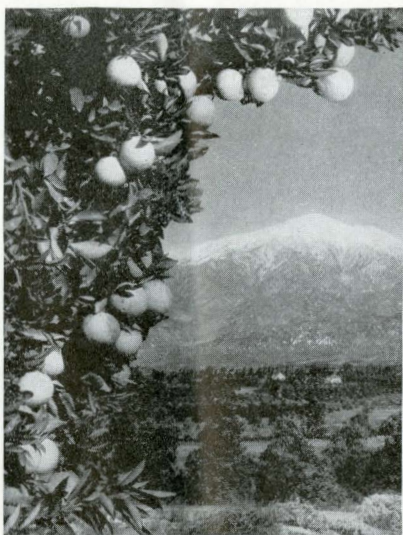
Saturday—7th Day—Another free morning in which to cruise around as you see fit or to go shopping.

In the afternoon we ferry across the bay to Berkeley, there beginning a motor tour which takes us to the University of California and the Mammoth Stadium, the famed Greek Theatre, through Piedmont and Oakland, crossing back over the bay to San Francisco late in the afternoon for dinner and the early evening. We leave at 10:30 P. M. on the Santa Fe for Merced on our way to Yosemite National Park.

Sunday—8th Day—Morning finds our special Pullmans parked at Merced. Immediately after breakfast we board motors for a beautiful morning ride up into the mountains followed by an enjoyable afternoon in the Mariposa Grove of Big Trees. We reach Yosemite Valley at 6:00 P. M. for overnight at Yosemite Lodge where we find snug quarters in the little bungalows among the trees. Nothing rudimentary about these cabins, mind you. Electric lights, running water, bath and all modern conveniences.

Monday—9th Day—A full morning in Yosemite Valley enjoying the beautiful scenery on every hand.

After an early luncheon we motor over a new and scenically beautiful route back to Merced where we board our waiting Pullmans and resume our



No picture can portray the charm of color, the landscape setting, and the floral lavishness of California, but here are two "hints" from Los Angeles

rail trip—through the productive San Joaquin Valley. An interesting point enroute is Fresno—world raisin capital.

Tuesday—10th Day—Early risers will enjoy following the series of loops and gyrations by which we drop down from Cajon Pass atop the San Bernardino Mountains to the fairy land of San Gabriel Valley—and Riverside.

Breakfast at the Glenwood Mission Inn, than which Aladdin himself couldn't have conjured a more charming place. A delightful morning here, full of pleasant surprises culminating with luncheon in the lovely patio of the Inn, and an organ recital for our especial benefit.

We leave at two in the afternoon, and wheel pleasantly through the famous Orange Empire down to Los Angeles, putting up at the Alexandria Hotel.

Wednesday—11th Day—Motoring over the flower-fringed boulevards and highways of Los Angeles and environs. Seeing Pasadena—the beautiful Oak Knoll section, Brookside Park, the Rose Bowl, Busch Gardens, and Orange Grove Avenue, Hollywood, where four-fifths of all American motion pictures are filmed; Beverly Hills and the palaces of the movie stars' roundabout. Santa Monica and a sweeping panorama of the famous beaches and seaside resorts, and where the newer residential sections have streets but no sidewalks because nobody goes afoot; movie studios, oil fields, air ports.

Thursday—12th Day—Down to the ocean at Wilmington, where a fine view is had of Los Angeles' great harbor and out over the blue Pacific on a white ship bound for Catalina Island where a busy day of sightseeing is featured by a trip in a glass bottom boat to see the wonderful submarine gardens. Crossing we're likely to see some big battle-ships riding at anchor outside San Pedro Harbor.



Grand Canyon of Arizona
One of the world's most thrilling spectacles

Friday—13th Day—Left open to do as we please—visit the shops, look up friends, play golf, enjoy the beaches, attend theatres, ride in an airplane, or what have you. Leave at midnight for San Diego.

Saturday—14th Day—Breakfast at the San Diego Hotel, after which we motor via Coronado and along the famed Silver Strand to Tijuana in old Mexico for luncheon and the afternoon at wonderful Hotel Agua Caliente, where the charm of the old world has been blended into a play spot that rivals Monte Carlo.

Back to the San Diego Hotel in late afternoon for dinner and overnight.

Sunday—15th Day—An open morning in which to do as we please, followed by an afternoon of sightseeing in San Diego whence Col. Chas. A. Lindbergh hopped off on the first leg of his trans-Atlantic flight, and where airplanes are more common than horses. The army and navy maneuvers here last summer witnessed more than 200 planes in massed formation in the air at one time. This is also a marine and naval base of the Pacific Fleet where America's sea strength is manifested in probably more battleships, cruisers, submarines, subchasers, airplane carriers, and other fighting craft than can be seen anywhere else.

Motoring to Balboa Park, Point Loma and seeing the other sights in San Diego where the architecture and atmosphere range from ultra-modernity back to the old missions of the Spanish padres. Leave at midnight headed for the Grand Canyon.

Monday—16th Day—Today our route is through the orange country, again over the San Bernardino Mountains, crossing the Colorado River near Needles—a different and, you will find, an interesting day. All night long it is in an uphill pull into the mountain country of northern Arizona.

Tuesday—17th Day—This is Grand Canyon Day, during which from early morning until eight o'clock in the evening we revel in the scenic environment of this eighth wonder of the world. But who needs to be told anything about this tremendous gorge which is five thousand feet deep and nine miles wide in some places. Our stay here includes a motor trip along the south rim of the Canyon, the better to see the famed chasm from a variety of viewpoints, short hikes to points of outstanding interest, and tribal dances by the Hopi Indians. All meals are had at the illustrious El Tovar Hotel, and we leave Grand Canyon that night in the same Pullmans that brought us here.

Wednesday—18th Day—Through the colorful Southwest, passing Albuquerque early in the afternoon and reaching Lamy later where we transfer to motors which wheel us up to old Santa Fé—today's capitol of New Mexico which was founded by the Spaniards in 1609. Here we have dinner and remain overnight at LaFonda Hotel.

Thursday—19th Day—Right after breakfast we fare forth in big Harvey-cars over the famous Indian-detour following up through the great Canyon of the Rio Grande and the still deeper canyon of the Taos River to Don Fernando de Taos, famed as the home and burial place of the illustrious scout, Kit Carson, but doubtless more renowned as the place to which great artists of today migrate even as the followers of Mohammed to Mecca—and beyond up to the great five-terraced Taos Indian pueblo—inhabited today and the highest in the Southwest, whose massive walls have looked down on raw history in the making through an unknown number of centuries, while Comanche, Piute, Navajo and Apache; Spaniard, Mexican and Anglo-Saxon; trader, trapper, soldier and priest—all wrote their record in the Book of Time.

And then back to Santa Fé in time to visit the Museum and art gallery before dinner and another night at LaFonda Hotel.



*An amazing sight to modern eyes
Ruins of the prehistoric cliff dwellings of Puyé*

Friday—20th Day—Another full day over the Indian-detour—this time to see the inhabited Indian pueblo of Tesuque where the dwellings are made of adobe and the costumes and customs have not changed much in three centuries. A little farther along we stop at the famous Santa Clara Indian pueblo whose inhabitants make famous black pottery and are held by some to be descendants of the cliff dwellers of Puyé.

But the strangest of all are the remarkable prehistoric cliff dwellings of Puyé, situated on Pajarito Plateau some miles to the northwest and reached after a motor trip across the Rio Grande and through many a rock-walled canyon. You will see a tremendous cliff extending out of sight to right and left, honeycombed with cave-like openings at various levels which are the entrances to a thousand rooms that were the abode of a forgotten race which figured for a few hundred or a few thousand years in the Panorama of Time and vanished centuries ago. On top are the ruins of many other homes occupied by strange people of whom little is known.

Ladders and the old original footholds hewn for mocassined feet make it possible to climb up for exploration and study at close range.

Back to Santa Fé and on to Lamy late in the afternoon to board our special Pullmans with our faces turned toward home.

Saturday—21st Day—Homeward bound. During the night we cross the New Mexico Rockies at Raton Pass and today cross the eastern part of Colorado and the farming sections of Kansas, reaching Kansas City at 8:30 P. M. where we bid adieu to the St. Louis members of our traveling house party.

Saturday—22nd Day—Arrive Dearborn Station, Chicago, 8:30 A. M.—Union Station, St. Louis 7:35 A. M.—on the twenty-first day after leaving on a round trip jaunt covering more than six thousand miles by rail and several hundred more by motor; an educational tour in leisurely comfort that has furnished a true cross-section of the most worthwhile things to see and do throughout the whole vast empire traversed; and in which we have run the gamut of sightseeing from the palaces of the movie stars to the traces of a prehistoric civilization in Arizona and New Mexico—a Far West summer outing long to be remembered.

CALENDAR SCHEDULE OF CALIFORNIA TOUR "P" (21 DAYS)

TOURS			P-7	P-8	P-9	P-10	P-11	P-12	P-13	P-14	P-15
Lv. Chicago	10:30 am	Sun.	June 2	June 16	June 30	July 7	July 14	July 21	July 28	Aug. 4	Aug. 11
Lv. St. Louis	9:01 pm	Sat.	June 1	June 15	June 29	July 6	July 13	July 20	July 27	Aug. 3	Aug. 10
Lv. Kansas City	10:30 am	Sun.	" 2	" 16	" 30	" 7	" 14	" 21	" 28	" 4	" 11
Lv. Denver	7:20 pm	Mon.	June 3	June 17	July 1	July 8	July 15	July 22	July 29	Aug. 5	Aug. 12
Lv. Colo. Springs	10:10 am	Tues.	" 4	" 18	" 2	" 9	" 16	" 23	" 30	" 6	" 13
Ar. Salt Lake City	9:05 am	Wed.	" 5	" 19	" 3	" 10	" 17	" 24	" 31	" 7	" 14
Ar. San Francisco	4:20 pm	Thur.	" 6	" 20	" 4	" 11	" 18	" 25	" 1	" 8	" 15
Lv. San Francisco	10:30 pm	Sat.	" 8	" 22	" 6	" 13	" 20	" 27	" 3	" 10	" 17
Ar. Merced	7:00 am	Sun.	" 9	" 23	" 7	" 14	" 21	" 28	" 4	" 11	" 18
Ar. Yosemite	6:00 pm	"	" 9	" 23	" 7	" 14	" 21	" 28	" 4	" 11	" 18
Lv. Merced	3:36 pm	Mon.	" 10	" 24	" 8	" 15	" 22	" 29	" 5	" 12	" 19
Ar. Riverside	7:20 am	Tues.	" 11	" 25	" 9	" 16	" 23	" 30	" 6	" 13	" 20
Ar. Los Angeles	4:30 pm	"	" 11	" 25	" 9	" 16	" 23	" 30	" 6	" 13	" 20
Lv. Los Angeles	1:00 am	Sat.	" 15	" 29	" 13	" 20	" 27	Aug. 3	" 10	" 17	" 24
Ar. San Diego	7:00 am	"	" 15	" 29	" 13	" 20	" 27	" 3	" 10	" 17	" 24
Lv. San Diego	2:00 am	Mon.	" 17	July 1	July 15	July 22	" 29	" 5	" 12	" 19	" 26
Lv. Los Angeles	9:30 am	"	" 17	" 1	" 15	" 22	" 29	" 5	" 12	" 19	" 26
Ar. Grand Canyon	7:15 am	Tues.	" 18	" 2	" 16	" 23	" 30	" 6	" 13	" 20	" 27
Lv. Grand Canyon	8:00 pm	"	" 18	" 2	" 16	" 23	" 30	" 6	" 13	" 20	" 27
Ar. Lamy (Ind.-det.)	4:35 pm	Wed.	" 19	" 3	" 17	" 24	" 31	" 7	" 14	" 21	" 28
Lv. Lamy	4:45 pm	Fri.	" 21	" 5	" 19	" 26	Aug. 2	" 9	" 16	" 23	" 30
Ar. Kansas City	8:45 pm	Sat.	" 22	" 6	" 20	" 27	" 3	" 10	" 17	" 24	" 31
Ar. Chicago	8:30 am	Sun.	" 23	" 7	" 21	" 28	" 4	" 11	" 18	" 25	Sept. 1
Ar. St. Louis	7:35 am	Sun.	June 23	July 7	July 21	July 28	Aug. 4	Aug. 11	Aug. 18	Aug. 25	Sept. 1

Colorado—California—Grand Canyon

TOUR O... 14 Days

*Leaving Chicago Sundays, July 7, 21, August 4, 11
Leaving St. Louis Saturdays, July 6, 20, August 3, 10
(See calendar schedule on Page 13)*

THE TOUR DAY-BY-DAY

Sunday—1st Day—We leave Chicago in special Pullmans at 10:30 A. M. via Burlington Route through the pleasant countryside of northern Illinois, cross the Mississippi River into Iowa in mid-afternoon, and during the balance of the day travel through the land where the tall corn grows the tallest, reaching Omaha at 11:30 P. M.

The St. Louis party (which left on the Burlington at 9:01 P. M. last night) reaches Kansas City at 7:30 A. M. and remains here three hours during which an interesting motor trip is made through the parks and over the boulevards before continuing by train in the afternoon through eastern Nebraska.

Monday—2nd Day—The St. Louis party reaches Denver at 7:15 A. M. and has an open morning in which to shop or to do some impromptu sightseeing, until the Chicago contingent arrives at 1:10 P. M. whereupon both parties merge and continue the tour as one group.

Right after lunch we have a sightseeing tour by motor embracing the famed Civic Center, State Capitol, Colorado Museum of Natural History, Cheeseman Park, U. S. Mint, the parks, boulevards, residential areas and other places of outstanding attraction with a little while afterward in which to shop if desired before dinner at the Shirley-Savoy. Leave Denver at 7:20 P. M. on the Rio Grande Road.

Tuesday—3rd Day—We wake up in Colorado Springs to find motors waiting to carry us to breakfast in style at the Broadmoor following which we have a wonderful motor ride that includes the Summit of Cheyenne Mountain and the Garden of the Gods.

We leave Colorado Springs on the D. & R. G. W. Ry. for a scenic trip that beggars description, reaching the Royal Gorge early in the afternoon and stopping for special sightseeing at the famed Hanging Bridge, which marks the narrowest spot in the great canyon whose rock walls at this point rise sheer almost half a mile. Continuing through the heart of the Colorado Rockies, we climb steadily upward and finally top the Continental Divide through Tennessee Pass and loop down the Pacific slope—through Eagle River Canyon and the Canyon of the Grand—all day riding through the most spectacular mountain scenery that is to be witnessed by rail travel anywhere in the United States.

Wednesday—4th Day—Riding through "the Promised Land" this morning, beside a stream connecting Utah Lake of fresh water and Great Salt Lake, and fittingly enough, named "The Jordan River."

We reach Salt Lake City shortly after breakfast and embark on a motor tour over the astonishingly wide streets to visit the business district, the State Capitol, Brigham Young's grave, and many other interesting places, ending up at great Square in time to see the beautiful Mormon Temple and to hear the noon-day organ recital in the Tabernacle.

The train ride is resumed, and we have an interesting afternoon crossing the immense salt beds which border Great Salt Lake.

Thursday—5th Day—Riding on the Western Pacific for more than a hundred miles this morning through the Feather River Canyon of the Sierras; later down through Sacramento, California's capital, through an extremely productive fruit country, and so to Oakland where we transfer to a ferry that weaves a skillful and interesting way across the bay, seething with ships and water craft of all sorts and descriptions—to San Francisco where we put up at the St. Francis Hotel for dinner and overnight.

Friday—6th Day—A free morning in which to go shopping in this cosmopolitan city of interesting shops and stores. In the afternoon we motor 'roundabout—visiting the Presidio, the Golden Gate, the wonderful Aquarium, Seal Rocks, Cliff House, Golden Gate Park and other attractions.

Leave in our special Pullmans via Santa Fe at 10:30 P. M. bound for Yosemite National Park.

Saturday—7th Day—At Merced this morning we board motors for an interesting trip through the orchard country and up into the mountains for an enjoyable afternoon in the Mariposa Grove of Big Trees, reaching Yosemite Valley at 6:00 P. M. and putting up at Yosemite Lodge, which is the name given to the colony of charming framed bungalows arranged artistically among the trees, and which provide surprisingly high class accommodations including electric lights, running water, bath, etc.

Sunday—8th Day—An open morning in which to make hikes over the floor of the valley to numerous beauty spots. Then after an early luncheon, we motor back to Merced, most of the way over a different route, to board our train for the South. During the balance of the afternoon we traverse the San Joaquin valley, passing through Fresno—world raisin capital.

Monday—9th Day—And here we are in Los Angeles. We go to the Alexandria, our headquarters, and right after breakfast wheel away in motors for a very full and entertaining day of sightseeing that includes Pasadena, Hollywood for luncheon at the Pig 'n Whistle, Beverly Hills where so many of the movie stars reside, and Santa Monica, returning over a route which takes us past some of the motion picture studios.

Tuesday—10th Day—There is so much to see and so many places to visit here that this entire day is left open to do as you please—visit friends or relatives, enjoy the beaches, make an ocean trip to Catalina Island, or Mt. Lowe, Mt. Wilson, investigate the shops and stores, etc.

Wednesday—11th Day—We start eastward this morning, traveling through the charming little suburban towns and a wide belt of orange country; climbing up the west slope of the San Bernardino range and down the other side, reaching the Arizona line at the Colorado River toward nightfall—an interesting day of worthwhile sightseeing from the car window.

Thursday—12th Day—This is Grand Canyon Day. We leave our luggage in our special Pullmans and from early morning until dark revel in the scenic environment of the breath-taking gorge which is five thousand feet deep and nine miles wide in some places. Our stay here includes a motor trip along the south rim of the Canyon, the better to see the famed chasm from a variety of view-

points, short hikes to points of outstanding interest, and tribal dances by Hopi Indians. All meals are had at the illustrious El Tovar Hotel, and we leave Grand Canyon that night in the same Pullmans that brought us here.

Friday—13th Day—Through the Painted Desert and the Navajo country of New Mexico—an interesting trip too, with occasional glimpses of Indians and a brief stop at Albuquerque, and toward nightfall start climbing up once more over the main range of the Rockies.

Saturday—14th Day—Homeward bound. This day is spent crossing the eastern part of Colorado and the farming sections of Kansas, reaching Kansas City at 8:30 P. M., where we bid adieu to the St. Louis members of our traveling house party.

Sunday—15th Day—Arrive Dearborn Station, Chicago, 8:30 A. M.—Union Station, St. Louis, 7:35 A. M.—

In this tour we offer you a comprehensive trans-continental trip from the Great Lakes to the Blue Pacific—going out via the only REALLY GREAT scenic route, returning via Arizona's wonderful Grand Canyon, and with practically an entire week in California in which to visit the most interesting places, to see the best sights, and to do the most worthwhile things.

And all in two weeks' time.

Perhaps you are one of the large group of people who, having but two brief weeks for vacation purposes, have considered a trip to California as out of the question. But here it is, as you see,—made possible by the special Pullmans and other special arrangements all the way which make it possible to employ every hour of our time to the best advantage.

CALENDAR SCHEDULE of CALIFORNIA TOUR "O" (14 days)

TOUR			O-1	O-2	O-3	O-4
Lv. Chicago	10:30 am.	Sun.	July 7	July 21	Aug. 4	Aug. 11
Lv. St. Louis	9:01 pm.	Sat.	July 6	July 20	Aug. 3	Aug. 10
Lv. Kansas City	10:30 am.	Sun.	7	" 21	" 4	" 11
Lv. Denver	7:20 pm.	Mon.	July 8	July 22	Aug. 5	Aug. 12
Lv. Colorado Springs	10:10 am.	Tues.	" 9	" 23	" 6	" 13
Ar. Salt Lake	9:05 am.	Wed.	" 10	" 24	" 7	" 14
Ar. San Francisco	4:20 pm.	Thur.	" 11	" 25	" 8	" 15
Lv. San Francisco	10:30 pm.	Fri.	" 12	" 26	" 9	" 16
Ar. Merced	7:00 am.	Sat.	" 13	" 27	" 10	" 17
Ar. Yosemite	6:00 pm.	"	" 13	" 27	" 10	" 17
Lv. Merced	3:36 pm.	Sun.	" 14	" 28	" 11	" 18
Ar. Los Angeles	7:35 am.	Mon.	" 15	" 29	" 12	" 19
Lv. Los Angeles	9:30 am.	Wed.	" 17	" 31	" 14	" 21
Ar. Grand Canyon	7:15 am.	Thur.	" 18	Aug. 1	" 15	" 22
Lv. Grand Canyon	8:00 pm.	"	" 18	" 1	" 15	" 22
Ar. Kansas City	8:30 pm.	Sat.	" 20	" 3	" 17	" 24
Ar. Chicago	8:30 am.	Sun.	" 21	" 4	" 18	" 25
Ar. St. Louis	7:35 am.	Sun.	July 21	Aug. 4	Aug. 18	Aug. 25

COST OF CALIFORNIA TOURS

Cost of complete tour "P", including Pullman, hotels, all meals, auto trips, Yosemite, Grand Canyon and Indian Detour, but not personal tips.

PULLMAN ACCOMMODATIONS	From CHICAGO		From ST. LOUIS	
	With Rail Ticket	Without Rail Ticket	With Rail Ticket	Without Rail Ticket
Two in lower berth (each).....	\$336.83	\$231.41	\$331.98	\$231.26
One in a lower berth.....	371.21	265.79	364.85	264.13
One in an upper berth.....	357.45	252.03	351.70	250.98
Two in a compartment (each).....	400.08	294.66	392.23	291.51
Two in a drawing-room (each).....	424.70	319.28	415.85	315.13
Three in a drawing-room (each).....	383.95	278.53	376.94	276.22

The figures shown above under the heading "Without Rail Ticket" are the tour costs for passengers joining tour at these points with through rail ticket purchased at home station.

The following rates will illustrate the cost from various Eastern points. These rates include rail transportation via Chicago, on standard routes, with Pullman to and from Chicago unless otherwise specified. *No meals or auto trips* are included until joining tour at Chicago or Omaha.

Rates subject to change without notice	One in Lower	Two in Lower (each)	One in Upper	Two in Comp. (each)	Two in D-Room (each)	Three in D-Room (each)
Baltimore, Md.	\$427.86	\$385.23	\$410.80	\$463.48	\$494.85	\$444.10
Boston, Mass.	439.71	395.20	421.89	476.82	508.94	456.19
Buffalo, N. Y.	408.27	368.26	392.25	441.63	471.50	423.75
Cincinnati, O.	389.76	351.63	374.50	421.63	449.25	404.00
Cleveland, O.	394.06	355.93	378.80	425.93	453.55	408.30
*Des Moines, Ia.	356.96	323.34	343.50	385.45	409.45	369.54
Detroit, Mich.	390.11	351.98	374.85	421.98	449.60	404.35
Indianapolis, Ind.	384.11	345.98	368.85	415.98	443.60	398.35
Kansas City, Mo.	347.36	317.11	335.25	372.85	394.60	358.69
Louisville, Ky.	386.16	348.03	370.90	418.03	445.65	400.40
Milwaukee, Wis.	374.81	340.43	361.05	403.68	428.30	387.55
*Minneapolis, Minn.	368.06	334.06	354.45	396.55	421.30	380.89
New York, N. Y.	437.23	393.85	419.87	473.60	504.22	452.97
*Omaha, Neb.	348.01	315.89	335.15	375.00	398.25	360.09
Philadelphia, Pa.	430.55	387.92	413.49	466.17	497.54	446.79
Pittsburgh, Pa.	402.92	364.04	387.36	435.54	463.91	417.66
*St. Paul, Minn.	368.06	334.06	354.45	396.55	421.30	380.89
Washington, D. C.	427.86	385.23	410.80	463.48	494.85	444.10

* Join tour at Omaha, leave at Kansas City.

Cost of complete tour "O", including Pullman, hotels, all meals, auto trips, Yosemite, and Grand Canyon, but not including personal tips.

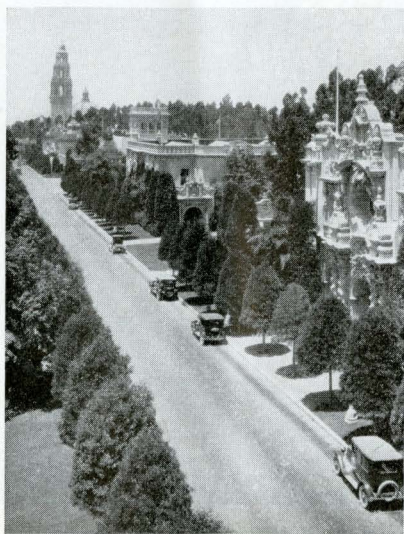
PULLMAN ACCOMMODATIONS	From CHICAGO		From ST. LOUIS	
	With Rail Ticket	Without Rail Ticket	With Rail Ticket	Without Rail Ticket
Two in a lower berth (each).....	\$247.58	\$148.16	\$243.10	\$148.38
One in a lower berth.....	278.08	178.66	272.47	177.75
One in an upper berth.....	265.87	166.45	250.72	156.00
Two in a compartment (each).....	303.07	203.65	296.35	201.63
Two in a drawing-room (each).....	324.57	225.15	317.22	222.50
Three in a drawing-room.....	288.74	189.32	282.72	188.00

The figures shown at bottom of preceding page under heading "Without Rail Ticket" are the tour costs for passengers joining tour at these points with through rail ticket purchased at home station.

The following rates will illustrate the cost from various Eastern points. These rates include rail transportation via Chicago, on standard routes, with Pullman to and from Chicago unless otherwise specified. *No meals or auto trips* are included until joining tour at Chicago or Omaha.

Rates subject to change without notice	One in Lower	Two in Lower (each)	One in Upper	Two in Comp. (each)	Two in D-Room (each)	Three in D-Room (each)
Baltimore, Md.	\$334.73	\$295.98	\$319.22	\$366.47	\$394.72	\$348.89
Boston, Mass.	346.58	305.95	330.31	379.81	408.81	360.98
Buffalo, N. Y.	315.14	279.01	300.67	344.62	371.37	328.54
Cincinnati, O.	296.63	262.38	282.92	324.62	349.12	308.79
Cleveland, O.	300.93	266.68	290.22	334.17	360.92	318.09
*Des Moines, Ia.	264.58	234.46	252.52	289.58	310.82	275.32
Detroit, Mich.	296.98	262.73	283.27	324.97	349.47	309.14
Indianapolis, Ind.	290.98	256.73	277.27	318.97	343.47	303.14
Kansas City, Mo.	254.98	228.23	244.27	276.98	295.97	264.47
Louisville, Ky.	293.03	258.78	279.32	321.02	345.52	305.19
Milwaukee, Wis.	281.68	251.18	269.47	306.67	328.17	292.34
*Minneapolis, Minn.	275.68	245.18	263.47	300.68	322.67	286.67
New York, N. Y.	344.10	304.60	328.29	376.59	404.09	357.76
*Omaha, Neb.	255.63	227.01	244.17	279.13	299.62	265.87
Philadelphia, Pa.	337.42	298.67	321.91	369.16	397.41	351.58
Pittsburgh, Pa.	309.79	274.79	295.78	338.53	363.78	322.45
*St. Paul, Minn.	275.68	245.18	263.47	300.68	322.67	286.67
Washington, D. C.	334.73	295.98	319.22	366.47	394.72	348.89

* Join tour at Omaha, leave party at Kansas City.



One of the drives
in Balboa Park

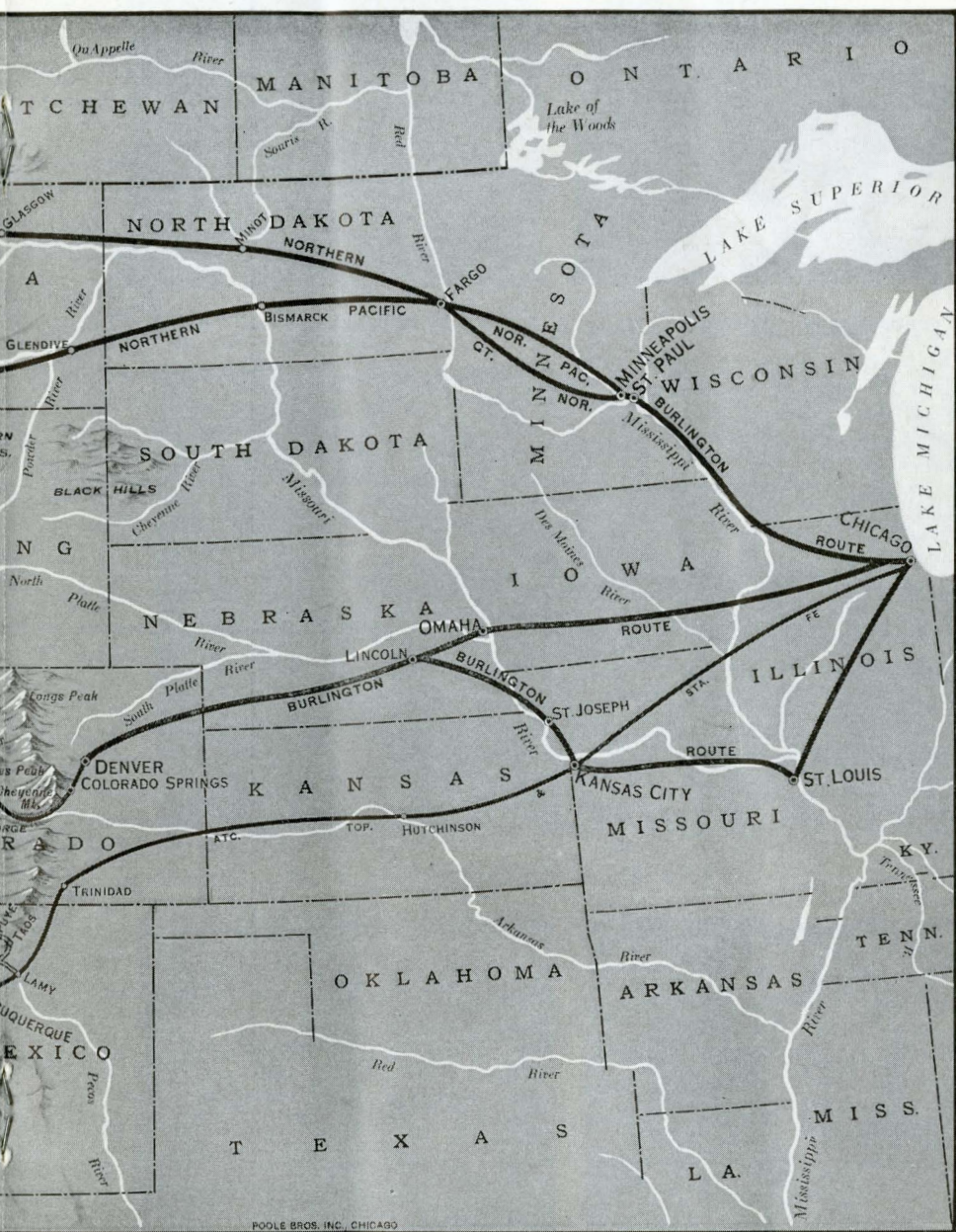


SAN DIEGO

Airplane maneuvers
over City and Bay



Map showing route of Burlington



on Escorted Tours to California



Temple Square—Salt Lake City



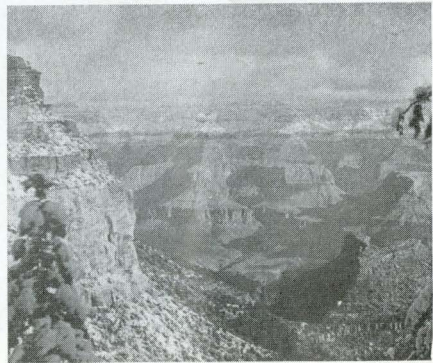
Mariposa Big Trees



San Francisco skyline from the bay



*Agua Caliente, Mexico's Monte Carlo
Tijuana*



Grand Canyon, Arizona

California via the Pacific Northwest

Leaving Chicago Sundays June 30, July 14, August 4

Here is your chance to make a wonderful tour from the Great Lakes, across the Northern tier of states and a dozen mountain ranges to Puget Sound; then down the Pacific Coast 1500 miles to the Mexican boundary and back east through the colorful southwest.

TOURS G-O (21 days) and G-P (28 days) via Burlington-Great Northern

SUNDAY—1ST DAY—Leave Chicago 10:35 A. M. following along the Mississippi River for 300 miles this afternoon. Leave St. Paul 11:00 P. M.

MONDAY—2ND DAY—Wheeling across North Dakota and eastern Montana.

TUESDAY—3RD DAY—Arrive in Glacier National Park for a two-day visit amid the wildest confusion of mountain grandeur on the continent. Morning motor trip to Many Glacier Hotel in the heart of the alpine world for afternoon and overnight.

WEDNESDAY—4TH DAY—By motor and boat to the charming chalets at the base of the sacred Going to the Sun Mountain. Luncheon here, returning to Glacier Park Hotel late in the afternoon and leaving for the west at 7:53 P. M.

THURSDAY—5TH DAY—Through Spokane this morning and an all day trip through Washington featured by the crossing of the Cascade Mountains including the great Cascade Tunnel, and so to Bellingham for overnight at the Leopold Hotel.

FRIDAY—6TH DAY—Motor to Mt. Baker Lodge for the afternoon and overnight at a new and one of the most beautiful resorts you ever saw.

SATURDAY—7TH DAY—Leave Mt. Baker in the morning, motoring back to Bellingham and thence by train across the Canadian border, reaching Vancouver at 2:30 P. M. for an interesting afternoon sightseeing tour by motor. Overnight at the Hotel Georgia.

SUNDAY—8TH DAY—Leave Vancouver at 10:30 A. M. on a ship sailing across the Strait of Georgia to Victoria for a sightseeing tour about this charming green city, and continuing in the afternoon down through Puget Sound, arriving in Seattle at 8:30 P. M. for overnight at the New Washington Hotel.

MONDAY—9TH DAY—All day in Seattle, with a morning left open to do as we please and an afternoon trip by motor to see all the outstanding attractions. Leave at 11:45 P. M.

(Continued in left hand column page 20)

TOURS N-O (21 days) and N-P (28 days) via Burlington-Northern Pacific

SUNDAY—1ST DAY—Leave Chicago at 10:35 A. M. for a pleasant daylight trip along the upper Mississippi River for 300 miles. Leave St. Paul 10:55 P. M.

MONDAY—2ND DAY—Crossing through the North Dakota grain belt, the badlands and eastern Montana.

TUESDAY—3RD DAY—Early risers this morning will be rewarded by the magnificent scenery of the Montana Rockies as the train circles down from Homestake Pass into Butte. We follow the rivers through the mountains all this day, arriving in Spokane about 6:00 P. M. for dinner and overnight at the Davenport Hotel.

WEDNESDAY—4TH DAY—A morning motor ride about Spokane, great metropolis of the Inland Empire, and another drive this afternoon to Hayden Lake and Lake Coeur d'Alene, returning to Spokane in time to leave at 6:30 P. M.

THURSDAY 5TH DAY—Through Seattle; northward along Puget Sound to the International Boundary and beyond—to Vancouver in Canada where we have an afternoon motor trip to see all the main points of interest. Overnight here at the Hotel Georgia.

FRIDAY—6TH DAY—Leave Vancouver 10:30 A. M. on a boat which crosses the Strait of Georgia to Victoria where we have a motor ride while the boat waits; then across Puget Sound to Seattle, arriving there at 8:30 P. M. where we remain until Sunday morning with headquarters at the Olympic Hotel.

SATURDAY—7TH DAY—An open morning in which to do as we please, and a motor trip this afternoon visiting the parks, the campus of the University of Washington and other places of outstanding interest including Lake Washington to see ships from scores of foreign ports riding at anchor in the famous fresh water harbor.

SUNDAY—8TH DAY—Leave Seattle in the morning and motor to Rainier National Park for 2 hours in the charming flower-carpeted valley at the base of the wonderful snow-capped mountain.

(Continued in right hand column page 20)

TOURS G-O and G-P (continued)

TUESDAY—10TH DAY—Arrive in Portland at 6:45 A. M. for a busy day of sightseeing divided between the thrilling Columbia River Highway and a tour 'roundabout the city which is world-famed for its wonderful display of roses. Leave Portland on the Southern Pacific at 9:30 P. M.

WEDNESDAY—11TH DAY—All day traveling through the foothills of the southern Cascade Range and the north part of the Sierra Nevada Mountains with towering Mt. Shasta in view most of the time.

THURSDAY—12TH DAY—Arrive in San Francisco at 7:30 A. M. for an open day in which to do as we please. Headquarters here are the St. Francis Hotel.

FRIDAY—13TH DAY—A free morning in which to visit the shops, followed by an afternoon motor trip embracing Golden Gate Park, the Presidio and other chief points of interest. Leaving at 10:30 P. M. on the Santa Fe on the way to Yosemite National Park.

TOURS N-O and N-P (continued)

MONDAY—9TH DAY—A busy morning here—horseback riding, climbing partway up the colossal peak, visiting the glistening ice caverns, "Nature coasting," etc., before departing in mid-afternoon for Tacoma for dinner and the evening.

TUESDAY—10TH DAY—Arrive Portland early this morning for a day of sightseeing by motor divided between the thrilling Columbia Highway and metropolitan Portland. Leave Portland on the Southern Pacific at 9:30 P. M.

WEDNESDAY—11TH DAY—Through southern Oregon and northern California with a famous landmark in sight almost all day—Mt. Shasta.

THURSDAY—12TH DAY—Arrive in San Francisco at 7:30 A. M. for an open day to do as we please with the St. Francis Hotel as headquarters.

FRIDAY—13TH DAY—Motoring 'round about San Francisco.

Beyond San Francisco two different tours are offered as follows:

TOURS G-P and N-P

SATURDAY—14TH DAY—An open morning is followed by an afternoon motor tour visiting Berkeley, the University of California, the Greek Theatre, Piedmont and Oakland. Leave San Francisco at 10:30 P. M. via the Santa Fe.

SUNDAY—15TH DAY—After breakfast at Merced we motor up into the mountains for an afternoon in the Mariposa Grove of Big Trees before reaching Yosemite National Park at 6:00 P. M.

MONDAY—16TH DAY—A full morning here and every moment precious—seeing the marvelous Yosemite Falls, El Capitan and scores of other magnificent scenic attractions, then motoring back to Merced in the afternoon to board our special Pullman bound for Southern California.

TUESDAY—17TH DAY—From early morning until 2:00 P. M. we spend a happy time at the charming Mission Inn at Riverside, continuing then to Los Angeles where we arrive at 4:30 P. M. and put up at the Alexandria Hotel.

WEDNESDAY—18TH DAY—Motoring almost all day through Pasadena, Hollywood, Beverly Hills and Santa Monica.

THURSDAY—19TH DAY—Down to the ocean and across to Catalina Island—an all day trip featured by a cruise in a glass bottom boat to see the wonderful submarine gardens.

FRIDAY—20TH DAY—An open day in which everybody is left free to carry out plans of his own choice. Leave at midnight for San Diego.

TOURS G-O and N-O

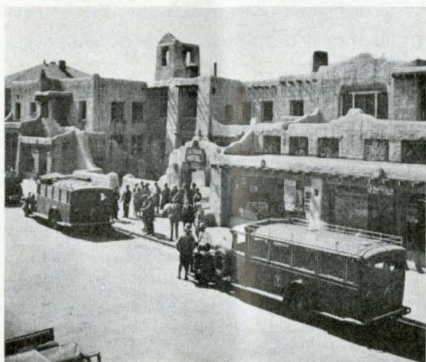
SATURDAY—14TH DAY—Upon awakening this morning we find our special Pullmans at Merced, Calif., and right after breakfast we fare forth in motors through the wonderful fruit orchards and up into the mountains, spending the afternoon in the Mariposa Grove of Big Trees, then continuing on to Yosemite for the evening and overnight in the charming group of cottages known collectively as Yosemite Lodge.

SUNDAY—15TH DAY—An entire morning here to enjoy whatever form of diversion appeals to you the most in this wonderland of peerless natural beauty.

We leave Yosemite after luncheon and motor back to Merced—most of the way via a different route than that taken yesterday; board our Pullmans in mid-afternoon and wheel pleasantly southward through the fertile San Joaquin Valley. Fresno, world's raisin capital, is an interesting point on the way.

MONDAY—16TH DAY—And here we are in Los Angeles, for two precious days. We put up at the Alexandria Hotel and start presently on a motor ride that includes a great variety of the most famous show places—Pasadena, Hollywood for luncheon, Beverly Hills and Santa Monica—a full day of sightseeing that keeps us on the go until late in the afternoon.

TUESDAY—17TH DAY—There is no special program today. Everybody is free to carry out plans of his or her own choice—and certainly there is no chance of exhausting the things to do—go shopping, or make one of the many available trips—Catalina Island, Mt. Lowe, Mt. Wilson, Riverside, Universal City, the beaches, the San Gabriel Mission, or what have you.



La Fonda Hotel in Santa Fé



*Great five-terraced Indian Pueblo,
Taos, N. M.*

TOURS G-P and N-P (*continued*)

SATURDAY—21ST DAY—After breakfast at the San Diego Hotel we cross the Bay to Coronado Beach and motor down the Silver Strand to Mexico, stopping first at Tia Juana and then on for luncheon at the smart Agua Caliente Hotel with several hours here to enjoy this gay Mexican Monte Carlo. You'll like this. Back to San Diego Hotel for overnight.

SUNDAY 22ND DAY—An "open" morning, but afternoon brings a motor trip through the beautiful residential section, Balboa Park and Point Loma. We board our Pullmans anytime after 10:00 P. M. and depart for the east in the wee sma' hours.

MONDAY—23RD DAY—Riding through the orange country and over the San Bernardino Mountains and crossing the Colorado River into Arizona early in the evening.

TUESDAY—24TH DAY—We reach the Grand Canyon of Arizona early in the morning for a full day in which to enjoy the scenic splendor of this world's greatest chasm.

WEDNESDAY—25TH DAY—Across New Mexico, reaching Lamy late in the afternoon and here boarding motors which whirl us up to old Santa Fé town and overnight at LaFonda Hotel.

THURSDAY—26TH DAY—By motor to Taos to visit the famous pueblos inhabited by Indians who are descendants of the cliff dwellers—and back to Santa Fé for overnight.

FRIDAY—27TH DAY—Seeing the prehistoric cliff dwellings of Puyé, and the Tesuque and Santa Clara Indian villages, motoring back to Lamy late in the afternoon and boarding our Pullmans for home.

SATURDAY—28TH DAY—Crossing Kansas and reaching Kansas City at 8:30 P. M. where we bid adieu to the St. Louis members of our party.

SUNDAY—29TH DAY—Reach Dearborn Station Chicago at 8:30 A. M., or St. Louis at 7:35 A. M.

TOURS G-O and N-O (*continued*)

WEDNESDAY—18TH DAY—We leave Los Angeles for the east at 9:30 this morning through the orange groves of the San Gabriel Valley and over the San Bernardino Range, crossing the Colorado River at Needles, and entering Arizona early in the evening.

THURSDAY—19TH DAY—This is Grand Canyon day and a day of days from a sightseeing standpoint.

There's a morning motor trip around the rim of the colossal, colorful canyon the better to view this amazing spectacle from a variety of viewpoints. An Indian ceremony is part of the afternoon program, but don't miss the blazing glory of the sunset across the Grand Canyon. It's a sight you'll never forget.

All meals today at El Tovar Hotel on the edge of the Canyon.

FRIDAY—20TH DAY—We are really on the way home now, humming along through the Painted Desert and the Navajo country of New Mexico, and toward evening start climbing up over the Rockies once more.

SATURDAY—21ST DAY—The endless sea of wheat which greets our eyes this morning tells us we're in Kansas. We follow alongside the Arkansas river for many hours and about nightfall cross over into Missouri at Kansas City where the St. Louis contingent leaves the party.

SUNDAY—22ND DAY—Arrive Chicago at the Dearborn Station at 8:30 A. M., or St. Louis at 7:35 A. M.

COST OF PACIFIC NORTHWEST-CALIFORNIA TOURS

Cost of complete tours from Chicago, including Pullman accommodations, hotels, all meals and auto trips, but not including personal tips.

PULLMAN ACCOMMODATIONS	TOURS GO AND NO		TOURS GP AND NP	
	With Rail Ticket	Without Rail Ticket	With Rail Ticket	Without Rail Ticket
Two in a lower berth (each)	\$336.53	\$219.11	\$435.78	\$312.36
One in a lower berth	373.53	256.11	476.66	353.24
One in an upper berth	358.72	241.30	460.30	336.88

The figures shown above under the heading "Without Rail Ticket" are the tour costs for passengers joining tour at these points with through rail ticket purchased at home station.

The following rates will illustrate the cost from various Eastern points. These rates include rail transportation via Chicago, on standard routes, with Pullman to and from Chicago unless otherwise specified. *No meals or auto trips* are included until joining tour at Chicago or St. Paul.

Rates subject to change without Notice	TOURS GO AND NO			TOURS GP AND NP		
	One in Lower	Two in Lower (Each)	One in Upper	One in Lower	Two in Lower (Each)	One in Upper
Baltimore, Md.	\$430.18	\$384.93	\$412.07	\$533.31	\$484.18	\$513.65
Boston, Mass.	448.89	401.76	430.02	552.02	501.01	531.60
Buffalo, N. Y.	410.59	367.96	393.52	513.72	467.21	495.10
Cincinnati, Ohio.	392.08	351.33	375.77	495.21	450.58	477.35
Cleveland, Ohio.	396.38	355.63	380.07	499.51	454.88	481.65
A) Des Moines, Iowa.	353.29	320.04	339.98	455.67	418.92	441.56
Detroit, Mich.	392.43	351.68	376.12	495.56	450.93	477.70
Indianapolis, Ind.	386.43	345.68	370.12	489.56	444.93	471.70
B) Kansas City, Mo.	355.96	319.90	341.52	458.34	418.78	443.10
Louisville, Ky.	388.48	347.73	372.17	491.61	446.98	473.75
D) Milwaukee, Wis.	368.23	333.10	354.17	471.36	432.36	455.75
E) Minneapolis, Minn.	361.11	325.05	346.67	463.49	423.93	447.65
New York, N. Y.	439.55	393.55	421.14	542.68	492.80	522.72
C) Omaha, Neb.	357.83	320.83	343.02	460.21	419.71	444.00
Philadelphia, Pa.	432.87	387.62	414.76	536.00	486.87	516.34
Pittsburgh, Pa.	405.24	363.74	388.63	508.37	462.99	490.21
E) St. Louis, Mo.	375.40	337.09	360.07	477.78	435.97	471.25
F) St. Paul, Minn.	361.11	325.05	346.67	463.49	423.93	448.25
Washington, D. C.	430.18	384.93	412.07	533.31	484.18	513.65

- A) Join tour at St. Paul, leave at Kansas City. (No Pullman included except while with tour.)
 B) Join tour at St. Paul.
 C) Join tour at St. Paul, leave at Kansas City.
 D) Leave tour at Kansas City.
 E) Join tour at Chicago, returning to St. Louis.



The Glenwood Mission Inn at Riverside



Avalon Bay, Catalina Island

Calendar Schedule of Pacific Northwest-California (Three-Week) Tours

			GO 1	GO 2	GO 3				NO 1	NO 2	NO 3
Lv. Chicago	10:35 am.	Sun.	June 30	July 14	Aug. 4	Lv. Chicago	10:35 am.	Sun.	June 30	July 14	Aug. 4
Lv. St. Paul	10:55 pm.	"	" 30	" 14	" 4	Lv. St. Paul	10:55 pm.	"	" 30	" 14	" 4
Lv. Minneapolis	11:50 pm.	"	" 30	" 14	" 4	Lv. Minneapolis	11:50 pm.	"	" 30	" 14	" 4
Ar. Glacier Park	8:05 am.	Tues.	July 2	" 16	" 6	Ar. Spokane	6:05 pm.	Tues.	July 2	" 16	" 6
Lv. Glacier Park	7:53 pm.	Wed.	" 3	" 17	" 7	Lv. Spokane	6:30 pm.	Wed.	" 3	" 17	" 7
Ar. Bellingham	8:15 pm.	Thur.	" 4	" 18	" 8	Ar. Seattle	7:00 am.	Thur.	" 4	" 18	" 8
Ar. Mt. Baker	11:30 am.	Fri.	" 5	" 19	" 9	Ar. Vancouver	2:30 pm.	"	" 4	" 18	" 8
Lv. Bellingham	12:01 pm.	Sat.	July 6	" 20	Aug. 10	Lv. Vancouver	10:30 am.	Fri.	" 5	" 19	" 9
Ar. Vancouver	2:30 pm.	Sat.	" 6	" 20	" 10	Ar. Victoria	3:00 pm.	"	" 5	" 19	" 9
Lv. Vancouver	10:30 am.	Sun.	" 7	" 21	" 11	Ar. Seattle	8:30 pm.	"	" 5	" 19	" 9
Ar. Victoria	3:00 pm.	"	" 7	" 21	" 11	Lv. Seattle	8:30 am.	Sun.	" 7	" 21	" 11
Ar. Seattle	8:30 pm.	"	" 7	" 21	" 11	Lv. Mt. Rainier	2:30 pm.	Mon.	" 8	" 22	" 12
Lv. Seattle	11:45 pm.	Mon.	" 8	" 22	" 12	Lv. Tacoma	1:30 am.	Tues.	" 9	" 23	" 13
Ar. Portland	6:45 am.	Tues.	" 9	" 23	" 13	Ar. Portland	6:45 am.	"	" 9	" 23	" 13
Lv. Portland	9:30 pm.	"	" 9	" 23	" 13	Lv. Portland	9:30 pm.	"	" 9	" 23	" 13
Ar. San Francisco	7:30 am.	Thur.	July 11	July 25	Aug. 15	Ar. San Francisco	7:30 am.	Thur.	July 11	July 25	Aug. 15
Lv. San Francisco	10:30 pm.	Fri.	" 12	" 26	" 16	Lv. San Francisco	10:30 pm.	Fri.	" 12	" 26	" 16
Ar. Yosemite	6:00 pm.	Sat.	" 13	" 27	" 17	Ar. Yosemite	6:00 pm.	Sat.	" 13	" 27	" 17
Lv. Merced	3:36 pm.	Sun.	" 14	" 28	" 18	Lv. Merced	3:36 pm.	Sun.	" 14	" 28	" 18
Ar. Los Angeles	7:35 am.	Mon.	" 15	" 29	" 19	Ar. Los Angeles	7:35 am.	Mon.	" 15	" 29	" 19
Lv. Los Angeles	9:30 am.	Wed.	" 17	" 31	" 21	Lv. Los Angeles	9:30 am.	Wed.	" 17	" 31	" 21
Ar. Grand Canyon	7:15 am.	Thur.	" 18	Aug. 1	" 22	Ar. Grand Canyon	7:15 am.	Thur.	" 18	Aug. 1	" 22
Lv. Grand Canyon	8:00 pm.	Thur.	" 18	" 1	" 22	Lv. Grand Canyon	8:00 pm.	"	" 18	" 1	" 22
Ar. Kansas City	8:30 pm.	Sat.	" 20	" 3	" 24	Ar. Kansas City	8:30 pm.	Sat.	" 20	" 3	" 24
Ar. Chicago	8:30 am.	Sun.	" 21	" 4	" 25	Ar. Chicago	8:30 am.	Sun.	" 21	" 4	" 25
Ar. St. Louis	7:35 am.	Sun.	July 21	Aug. 4	Aug. 25	Ar. St. Louis	7:35 am.	Sun.	July 21	Aug. 4	Aug. 25

Calendar Schedule of Pacific Northwest-California (Four-Week) Tours

			GP 1	GP 2	GP 3				NP 1	NP 2	NP 3
Lv. Chicago	10:35 am.	Sun.	June 30	July 14	Aug. 4	Lv. Chicago	10:35 am.	Sun.	June 30	July 14	Aug. 4
Lv. St. Paul	10:55 pm.	"	" 30	" 14	" 4	Lv. St. Paul	10:55 pm.	"	" 30	" 14	" 4
Lv. Minneapolis	11:50 pm.	"	" 30	" 14	" 4	Lv. Minneapolis	11:50 pm.	"	" 30	" 14	" 4
Ar. Glacier Park	8:05 am.	Tues.	July 2	" 16	" 6	Ar. Spokane	6:05 pm.	Tues.	July 2	" 16	" 6
Lv. Glacier Park	7:53 pm.	Wed.	" 3	" 17	" 7	Lv. Spokane	6:30 pm.	Wed.	" 3	" 17	" 7
Ar. Bellingham	8:15 pm.	Thur.	" 4	" 18	" 8	Ar. Vancouver	2:30 pm.	Thur.	" 4	" 18	" 8
Ar. Mt. Baker	11:30 am.	Fri.	" 5	" 19	" 9	Lv. Vancouver	10:30 am.	Fri.	July 5	" 19	Aug. 9
Ar. Vancouver	2:30 pm.	Sat.	" 6	" 20	" 10	Ar. Victoria	3:00 pm.	Fri.	" 5	" 19	" 9
Lv. Vancouver	10:30 am.	Sun.	" 7	" 21	" 11	Ar. Seattle	8:30 pm.	"	" 5	" 19	" 9
Ar. Victoria	3:00 pm.	"	" 7	" 21	" 11	Lv. Seattle	8:30 am.	Sun.	" 7	" 21	" 11
Ar. Seattle	8:30 pm.	"	" 7	" 21	" 11	Lv. Mt. Rainier	2:30 pm.	Mon.	" 8	" 22	" 12
Lv. Seattle	11:45 pm.	Mon.	" 8	" 22	" 12	Lv. Tacoma	1:30 am.	Tues.	" 9	" 23	" 13
Ar. Portland	6:45 am.	Tues.	" 9	" 23	" 13	Ar. Portland	6:45 am.	"	" 9	" 23	" 13
Lv. Portland	9:30 pm.	"	" 9	" 23	" 13	Lv. Portland	9:30 pm.	"	" 9	" 23	" 13
Ar. San Francisco	7:30 am.	Thur.	July 11	July 25	Aug. 15	Ar. San Francisco	7:30 am.	Thur.	July 11	July 25	Aug. 15
Lv. San Francisco	10:30 pm.	Sat.	" 13	" 27	" 17	Lv. San Francisco	10:30 pm.	Sat.	" 13	" 27	" 17
Ar. Yosemite	6:00 pm.	Sun.	" 14	" 28	" 18	Ar. Yosemite	6:00 pm.	Sun.	" 14	" 28	" 18
Lv. Merced	3:36 pm.	Mon.	" 15	" 29	" 19	Lv. Merced	3:36 pm.	Mon.	" 15	" 29	" 19
Ar. Riverside	7:20 am.	Tues.	" 16	" 30	" 20	Ar. Riverside	7:20 am.	Tues.	" 16	" 30	" 20
Ar. Los Angeles	4:30 pm.	"	" 16	" 30	" 20	Ar. Los Angeles	4:30 pm.	"	" 16	" 30	" 20
Lv. Los Angeles	1:00 am.	Sat.	" 20	Aug. 3	" 24	Lv. Los Angeles	1:00 am.	Sat.	" 20	Aug. 3	" 24
Ar. San Diego	7:00 am.	Sat.	" 20	" 3	" 24	Ar. San Diego	7:00 am.	Sat.	" 20	" 3	" 24
Lv. San Diego	2:00 am.	Mon.	" 22	" 5	" 26	Lv. San Diego	2:00 am.	Mon.	" 22	" 5	" 26
Lv. Los Angeles	9:30 am.	"	" 22	" 5	" 26	Lv. Los Angeles	9:30 am.	"	" 22	" 5	" 26
Ar. Grand Canyon	7:15 am.	Tues.	" 23	" 6	" 27	Ar. Grand Canyon	7:15 am.	Tues.	" 23	" 6	" 27
Lv. Grand Canyon	8:00 pm.	"	" 23	" 6	" 27	Lv. Grand Canyon	8:00 pm.	"	" 23	" 6	" 27
Ar. Lamy (Indian	4:35 pm.	Wed.	" 24	" 7	" 28	Ar. Lamy (Indian	4:35 pm.	Wed.	" 24	" 7	" 28
Lv. Lamy Detour)	4:45 pm.	Fri.	" 26	" 9	" 30	Lv. Lamy Detour)	4:45 pm.	Fri.	" 26	" 9	" 30
Ar. Kansas City	8:30 pm.	Sat.	" 27	" 10	" 31	Ar. Kansas City	8:30 pm.	Sat.	" 27	" 10	" 31
Ar. Chicago	8:30 am.	Sun.	" 28	" 11	Sept. 1	Ar. Chicago	8:30 am.	Sun.	" 28	" 11	Sept. 1
Ar. St. Louis	7:35 am.	Sun.	July 28	Aug. 11	Sept. 1	Ar. St. Louis	7:35 am.	Sun.	July 28	Aug. 11	Sept. 1



The Palm-fringed Beach at Waikiki

HAWAII! The very name conjures up so much of romance, charm and beauty that there are few who have not felt a longing to enjoy the wonders of this paradise of the Pacific. The splendor of this subtropical land grips the imagination and instills in the heart a desire to see these rainbow islands. Famed in song and story, no other land combines so many of nature's glories or offers such an endless variety of outdoor pleasures.

The scenery is unsurpassed, with volcano-born mountains rising above great valleys covered with pineapple and sugar plantations. Rolling hills clothed in brilliant verdure give an atmosphere of peace and restfulness. On the windward coasts, towering cliffs, rising sheer out of the ocean, are washed by the waters of the Pacific. Then there are the volcanoes, seething and boiling, their awe-inspiring grandeur making mortals seem insignificant indeed.

Life in Hawaii with its climate of eternal springtime offers all the joys of the outdoors every day in the year. Brilliant sunshine, clear, blue skies, and air tempered by the gentle, refreshing trade winds, enable one to rest contentedly beneath shady palm trees or indulge in active sport in azure warm waters which wash the splendid beaches. Surf board riding, invigorating and thrilling, or letting the breakers dash you shoreward safely in big outrigger canoes, and swimming, are sports enjoyed daily by visitors.

The restful, healthful sea voyage is a holiday in itself. Each day the sea, the sky and the air become more delightful. Flying fishes flash like a streak of silver over the waves. Sunsets, vivid and glorious, are followed by nights of bewitching charm. Days are full of play and interest; evenings bring entertainment and dancing.

Forgotten are the petty trials of life. Gone dull care and the dull duties of the workaday world. Here is adventure—vacation days at their best.

Hawaiian Tour No. 1

Lv. Chicago 10:35 A. M. Sunday, June 30
 Lv. St. Louis 11:59 P. M. Saturday, June 29
Enroute with either tour No. 1 or GO-1 (see day by day schedule pages 19) to departure Portland Tuesday, July 9.

Lv. Portland 12:00 Noon Friday, July 12
 "SS *Wilhelmina*" of the Matson Navigation Company.
 Ar. Honolulu 8:00 A. M. Saturday, July 20

Ten days in Honolulu. Accommodations at the Seaside Hotel, including an auto-rail trip around the Island of Oahu, motor trip to Mt. Tantalus with a two day side trip on the "SS *Maui*" to the Island of Hawaii for a visit to the Kilanea Volcano with a night at the Volcano House for a view of the crater at night.

Lv. Honolulu 4:00 P. M. Friday, Aug. 2
 "SS *Malolo*" of the Matson Navigation Company.
 Ar. San Francisco 8:00 A. M. Wednesday, Aug. 7

Passengers are at their own expense at Portland from Tuesday night until Friday noon and at San Francisco from Wednesday morning until Thursday afternoon.

From San Francisco to Chicago or St. Louis you have the choice of either of the following:

TOUR "O" including one day in San Francisco, two days Yosemite, two days Los Angeles, returning on the Santa Fe via the Grand Canyon, arriving in Chicago or St. Louis Sunday, August 18. (See detailed schedule on Page 11.)

TOUR "P" including two days in San Francisco, two days Yosemite, Riverside, Los Angeles for three days, San Diego for two days, returning via the Grand Canyon, including two days Indian Detour, arriving in Chicago 8:30 a.m. and St. Louis 7:35 a.m. Sunday, August 25. (See detailed schedule on Page 5.)

Hawaiian Tour No. 2

Lv. Chicago 10:30 a. m. Sunday, June 16
 Lv. St. Louis 9:01 p. m. Saturday, June 15
Enroute with Tour P-8, (see day to day schedule Page 5), via Denver, Colorado Springs, the Royal Gorge, Salt Lake City, and the Feather River Canyon.

Ar. San Francisco 4:20 p. m. Thursday, June 20
 Two Days in San Francisco at St. Francis Hotel. Auto trip around city.

Lv. San Francisco 12:00 noon Saturday, June 22
 Four days of enjoyable boat life on the majestic new "SS *Malolo*" of the Matson Navigation company.

Ar. Honolulu 2:00 p. m. Wednesday, June 26
 Accommodations at the Seaside Hotel (rooms with bath). Seven days in Hawaii, with auto trip included to Mt. Tantalus and around the Island of Oahu, with a side trip on the "SS *Malolo* to Hilo," on the Island of Hawaii, where we spend two days viewing the wonders in the vicinity of the Kilauea Volcano, with a night at the Volcano House for a view of the crater by night.

Lv. Honolulu 4:00 p. m. Wednesday, July 3
 The "SS *Malolo*" is again our home and the homeward trip is quickly passed with many deck games, swimming, and dances.

Ar. San Francisco 8:00 a. m. Monday, July 8
 From Monday until Thursday afternoon, passengers are "on their own" in San Francisco. Join Chicago party on their arrival at 4:30 p. m. Thursday.

From San Francisco to Chicago or St. Louis, passengers have their choice of the following tours:

Tour O-1 with two days in Yosemite, two days in Los Angeles, returning via Santa Fe with a day at the Grand Canyon. (See day to day Itinerary page 11). Ar. Chicago 8:30 a. m. Ar. St. Louis 7:35 a. m. Sunday, July 21

Tour P-10 with two days Yosemite, Riverside, three days Los Angeles, San Diego for two days, including a day at the Grand Canyon. And a two-day Indian detour on the return. (See day by day Itinerary page 5).

Ar. Chicago 8:30 a. m. Ar. St. Louis 7:35 a. m. Sunday, July 28

Hawaiian Tour No. 3

Lv. Chicago 10:30 a. m. Sunday, July 7
Lv. St. Louis 9:01 p. m. Saturday, July 6

Enroute with Tour P-10 (see day by day Itinerary Page 5), including Denver, Colorado Springs, Royal Gorge, Salt Lake City, and the Feather River Canyon.

Ar. San Francisco 4:20 p. m. Thursday, July 11

Two days in San Francisco at the St. Francis Hotel. Auto trip around city.

Lv. San Francisco 12:00 noon Saturday, July 13

On the "SS Malolo" enjoying the many deck sports, swimming, dancing or just resting.

Ar. Honolulu Wednesday, July 17

Two weeks in Hawaii at the Seaside Hotel, with trips included around the Island of Oahu, to Mt. Tantalus, a two day side trip to the Island of Hawaii with a visit to Hilo and to the Kilauea Volcano the world's largest active volcano, with a night at the Volcano House for a view of the crater by night. The balance of the time in the Islands can be utilized to take in the many forms of recreation available, boating, swimming, golfing, tennis, etc.

Lv. Honolulu 10:00 a. m. Saturday, July 27

On board the "SS City of Los Angeles" with the time passing rapidly with the sociability of ship life.

Ar. Los Angeles Friday, Aug. 2

Passengers are on their "own" in Los Angeles from time boat docks August 2 until joining Tour P-12, when party leaves Los Angeles for Chicago at 9:30 a. m. August 5, (see day by day Itinerary Page 5), including a day at the Grand Canyon and two days Indian-detour.

Ar. Chicago 8:30 a. m. Sunday, Aug. 11

Ar. St. Louis 7:35 a. m. Sunday, Aug. 11

Hawaiian Tour No. 4

Lv. Chicago 10:30 a. m. Sunday, July 14

Lv. St. Louis 9:01 p. m. Saturday, July 13

Enroute with Tour P-11, including Denver, Colorado Springs, The Royal Gorge, Salt Lake City, Feather River Canyon, San Francisco for two days, Yosemite, Park and Riverside, (See day by day Itinerary Page 5).

Ar. Los Angeles 4:30 p. m. Tuesday, July 23

Three days in Los Angeles at the Alexandria Hotel, with auto trip to Hollywood and Pasadena; Catalina Island.

Lv. Los Angeles 12:00 noon Saturday, July 27

On the "SS City of Honolulu" of the Los Angeles S. S. Co.

Ar. Honolulu Wednesday, Aug. 2

Eight days in Hawaii, accommodations at the Seaside Hotel, including an auto-rail trip around the Island Oahu, motor trip to Mt. Tantalus with a two day side trip on the "SS City of Honolulu" to the Island of Hawaii for a visit to the Kilauea Volcano, with a night at the Volcano House for a view of the volcano by night.

Lv. Honolulu 10:00 a. m. Saturday, Aug. 10

We board the "SS City of Honolulu" for the homeward journey, spending the time in all kinds of shipboard activities.

Ar. Los Angeles Friday, Aug. 16

Immediately on our arrival we join Tour P-14 continuing with that party to San Diego for two days, then home via the Santa Fe with a day at the Grand Canyon and two days Indian-detour. (See Itinerary Page 5).

Ar. Chicago 8:30 a. m. Sunday, Aug. 25

Ar. St. Louis 7:35 a. m. Sunday, Aug. 25

Hawaiian Tour No. 5

Lv. Chicago

10:30 a. m.

Sunday, July 28

Lv. St. Louis

9:01 p. m.

Saturday, July 27

Enroute with Tour P-13 including Denver, Colorado Springs, the Royal Gorge, Salt Lake City, Feather River Canyon, two days San Francisco, two days in Yosemite, and Riverside. (See day by day Itinerary Page 5).

Ar. Los Angeles

4:30 p. m.

Tuesday, Aug. 6

Four days in Los Angeles, making an auto trip to Hollywood and Pasadena, then to Catalina for a day.

Lv. Los Angeles

12:00 noon

Saturday, Aug. 10

A pleasant ocean voyage on the "SS City of Los Angeles" of the Los Angeles S. S. Co.

Ar. Honolulu

Friday, Aug. 16

Eight days in Hawaii, six of them spent in Honolulu with an auto-rail trip around the Island and an auto trip to Mt. Tantalus included. The other two days are spent on a side trip to Hilo and the Kilauea Volcano, with a night at the Volcano House.

Lv. Honolulu

10:00 a. m.

Saturday, Aug. 24

Again aboard the "SS City of Los Angeles" busy with steamship activities, deck games, dancing, swimming, etc.

Ar. Los Angeles

Friday, Aug. 30

As we have no California Tour returning at this late date, passengers would return unescorted; no meals, Pullman or auto trips are included on return trip.

Cost of Hawaiian Tours

The cost of these tours, including all necessary expenses, such as rail ticket, Pullman, auto trips, hotels, all meals (except as shown in Itineraries) and berth at minimum rate on steamer but not including personal tips.

FROM CHICAGO	Tour No. 1		Tour No. 2		Tour No. 3	Tour No. 4	Tour No. 5
	Returning Tour "O"	Returning Tour "P"	Returning Tour "O"	Returning Tour "P"	Returning Tour "P"	Returning Tour "P"	Returning Independent
One person in lower.....	\$738.90	\$821.53	\$676.83	\$759.46	\$672.83	\$697.21	\$573.36
Two Persons in lower (each)....	705.71	784.47	646.33	725.09	644.21	662.83	556.42
One person in upper.....	725.62	806.70	664.62	745.70	661.37	683.45	566.58
* FROM ST. LOUIS							
One person in lower.....	\$737.92	\$819.80	\$671.22	\$753.10	\$666.47	\$690.85	\$570.13
Two persons in lower (each)....	703.43	781.81	643.66	720.23	639.35	657.98	553.76
One person in upper.....	724.12	804.60	659.47	739.95	655.62	677.70	563.58

* On Tour No. 1 no meals included between St. Louis and Chicago.

What these Tours Include on Steamship and in Hawaii

Stateroom at the minimum rate on the Steamer, steamer rugs and deck chairs, and taxi fares between dock and hotel, meals and lodging at the Seaside Hotel in Honolulu, for the number of days shown, side trip to Kilauea Volcano, motor trip to Mt. Tantalus and around the Island of Oahu.

Superior steamer accommodations are available, also hotel accommodations at the Moana or Royal Hawaiian Hotel at higher rates.

The Escort with the rail tour does not go to Hawaii, the boat and Island trips being under the supervision of the Steamship Companies.

Any representative shown on page 32 will be very glad to furnish additional information and complete your arrangements for this, or any other Hawaiian Tour.

Yellowstone — Colorado — California

Of course you know we operate a great many western vacation tours besides the California tours, and it is entirely practicable to combine a fine and complete trip to Yellowstone National Park and a visit in Colorado with most of the California tours described in the preceding pages, and to have the full benefit of the personally conducted, planned-in-advance features all the way.

This may be accomplished by the simple expedient of accompanying a regularly scheduled tour that goes first to and through Magic Yellowstone, then down to Denver for a day, and here leaving the original tour and joining the California touring party as per the following itinerary.

Tour DC-O 21 Day Tours			Tour DC-P 28 Day Tours		
From Chicago Sundays			From Chicago Sundays		
June 30, July 14, 28, Aug. 4			June 23, 30, July 7-14-21-28, Aug. 4		
From St. Louis Saturdays			From St. Louis, Saturdays		
June 29, July 13, 27, Aug. 3.			June 22, 29, July 6-13-20-27, Aug. 3		
Lv. Chicago	10:35 am.	Sunday	Lv. Chicago	10:35 am.	Sunday
Lv. St. Louis	2:15 pm.	Saturday	Lv. St. Louis	2:15 pm.	Saturday
Lv. St. Paul	11:00 pm.	Sunday	Ar. Gardiner	9:30 am.	Tuesday
Ar. Gardiner	9:30 am.	Tuesday	Ar. Mammoth	10:00 am.	"
Ar. Mammoth	10:00 am.	Tuesday	Ar. Old Faithful	12:36 pm.	Wednesday
Ar. Old Faithful	12:36 pm.	Wednesday	Ar. Lake	4:58 pm.	Thursday
Ar. Lake	4:58 pm.	Thursday	Ar. Canyon	12:00 m.	Friday
Ar. Canyon	12:00 m.	Friday	Lv. Cody	8:20 am.	Sunday
Ar. Cody	4:55 pm.	Saturday	Ar. Denver	8:55 am.	Monday
Lv. Cody	8:20 am.	Sunday	Lv. Denver	7:20 pm.	Monday
Ar. Denver	8:55 am.	Monday	Lv. Colo. Springs	10:10 am.	Tuesday
Lv. "	7:20 pm.	"	Lv. Salt Lake	1:05 pm.	Wednesday
Lv. Col. Springs	10:10 am.	Tuesday	Ar. San Francisco	4:20 pm.	Thursday
Lv. Salt Lake	1:05 pm.	Wednesday	Lv. "	10:30 pm.	Saturday
Ar. San Francisco	4:20 pm.	Thursday	Ar. Yosemite	6:00 pm.	Sunday
Lv. "	10:30 pm.	Friday	Ar. Los Angeles	4:30 pm.	Tuesday
Ar. Yosemite	6:00 pm.	Saturday	Lv. "	1:00 am.	Saturday
Ar. Los Angeles	7:35 am.	Monday	Ar. San Diego	7:00 am.	"
Lv. "	9:30 am.	Wednesday	Lv. San Diego	2:00 am.	Monday
Ar. Grand Canyon	7:15 am.	Thursday	Ar. Grand Canyon	7:15 am.	Tuesday
Lv. " "	8:00 pm.	"	Lv. "	8:00 pm.	"
Ar. Kansas City	8:30 pm.	Saturday	Ar. Santa Fe	5:30 pm.	Wednesday
Ar. St. Louis	7:35 am.	Sunday	Lv. "	3:35 pm.	Friday
Ar. Chicago	8:30 am.	"	Ar. St. Louis	7:35 am.	Sunday
			Ar. Chicago	8:30 am.	"

Rates

With rail ticket and all necessary expenses. (Hotels through Yellowstone)

	FROM CHICAGO		FROM ST. LOUIS	
	21-Day Tour	28-Day Tour	21-Day Tour	28-Day Tour
Two persons in a lower berth (each) . . .	\$348.56	\$437.81	\$347.66	\$436.54
One person in a lower berth	386.68	479.81	384.85	477.23
One person in an upper berth	371.42	463.00	369.97	460.95
Two persons in a compartment (each) . .	417.93	514.93	415.35	511.23
Two persons in a drawing-room (each) .	445.17	545.30	442.72	540.85

Ticket Routings for Various Tours

TOUR O—Destination *San Francisco*. Going, Burlington Route, Chicago or St. Louis to Denver; Denver & Rio Grande Western to Salt Lake City; Western Pacific to San Francisco. Returning, Santa Fe Lines to Los Angeles; Santa Fe Lines to Chicago or Santa Fe Lines to Kansas City, and Burlington Route to St. Louis, with side trip coupons Williams to Grand Canyon and return.

TOUR P—Destination *San Francisco*. Going, Burlington Route. Chicago or St. Louis to Denver; Denver & Rio Grande Western to Salt Lake City; Western Pacific to San Francisco. Returning, Santa Fe Lines to Los Angeles; Santa Fe Lines to Chicago or Santa Fe Lines to Kansas City, and Burlington Route to St. Louis with side trip via Santa Fe Lines from Los Angeles to San Diego and return and Williams to Grand Canyon and return.

TOUR G-O—Destination *San Francisco*. Burlington Route, Chicago to St. Paul—Great Northern to Portland (with side trip coupons Seattle to Vancouver and return, going Great Northern, returning Canadian Pacific S. S.)—Southern Pacific to San Francisco—returning, Santa Fe Lines, San Francisco to Los Angeles—Santa Fe Lines, Los Angeles to Chicago or Santa Fe Lines to Kansas City and Burlington Route to St. Louis with side trip coupons Williams to Grand Canyon and return.

TOUR N-O—Destination *San Francisco*. Burlington Route, Chicago to St. Paul—Northern Pacific to Portland (with side trip coupons Seattle to Vancouver and return—going Great Northern, returning Canadian Pacific S. S.)—Southern Pacific to San Francisco—returning Santa Fe Lines, San Francisco to Los Angeles—Santa Fe Lines, Los Angeles to Chicago or Santa Fe Lines to Kansas City and Burlington Route to St. Louis with side trip coupons Williams to Grand Canyon and return.

TOUR G-P—Destination *San Francisco*. Burlington Route, Chicago to St. Paul—Great Northern to Portland (with side trip coupons Seattle to Vancouver and return, going Great Northern, returning Canadian Pacific S. S.)—Southern Pacific to San Francisco—returning, Santa Fe Lines, San Francisco to Los Angeles—Santa Fe Lines, Los Angeles to Chicago or Santa Fe Lines to Kansas City and Burlington Route to St. Louis, with side trip coupons Los Angeles to San Diego and return, and Williams to Grand Canyon and return.

TOUR N-P—Destination *San Francisco*. Burlington Route, Chicago to St. Paul—Northern Pacific to Portland (with side trip coupons Seattle to Vancouver and return, going Great Northern, returning Canadian Pacific S. S.)—Southern Pacific to San Francisco—returning, Santa Fe Lines, San Francisco to Los Angeles—Santa Fe Lines, Los Angeles to Chicago or Santa Fe Lines to Kansas City and Burlington Route to St. Louis, with side trip coupons Los Angeles to San Diego and return and Williams to Grand Canyon and return.

INFORMATION

Children's Rates

Rates for children will be based on age and accommodations desired for them.

Hotels

At all hotels, rooms with bath are provided on basis of two persons to a room. Single rooms can be had (except in Glacier and Yellowstone) at extra charge.

Under Escort

Each tour will be under escort of a well informed experienced railroad representative to relieve passengers of all details and smooth the way to a memorable carefree vacation.

Reservation

Request for reservation should give name and residence address of each passenger, and where more than one in party, how to be berthed on train and at hotels, stating relationship with ages of children if any. Deposit of \$25 from each passenger is necessary to hold reservation. Final payment must be made at least seven days before tour leaves.

Reservations may be secured by application to representatives shown herein, or any other Burlington Route or Santa Fe representative, or by application to J. G. Delaplaine, Manager, Burlington Escorted Tours, 547 West Jackson Blvd., Chicago, Ill.

Mail and Telegrams

Mail and telegrams for members of these tours should be addressed to the hotels as shown in the day-to-day itinerary, and marked c/o Burlington Escorted Tours.

Purchase Through Rail Ticket

Passengers starting from Eastern points are advised to purchase through railroad ticket at their home station, thus obtaining the full benefit of the round trip excursion rates, being particular to see that their tickets read as per route shown on page 29.

Stopover in California

Those desiring to remain in California longer may leave one tour at San Francisco, Los Angeles, or San Diego and join a subsequent tour or return independently via route of tour. Allowance will be made for unused part of complete tour only if arranged at time of booking.

Descriptive Literature

Illustrated folders descriptive of the points these tours will visit will be gladly sent free of charge on application.

RESERVATION BLANK

City

Date

Dear Sir:

Please make reservation for parties listed below joining Tour

at Date

Name Address City and State

(If more than one passenger, indicate who are to be roomed together and give ages of children, if any.)

Will require Pullman space checked ☒ below:

☐ Lower

☐ Two in lower

☐ Compartment

☐ Upper

☐ Section

☐ Drawing Room

In case of Yellowstone Tour specify ☐ Hotels ☐ Lodges

REMARKS:

(Sign here)

Address

Detach and send to any representative shown on page 32 or to J. G. Delaplaine, Manager Burlington Escorted Tours, 547 W. Jackson Blvd., Chicago, Ill.

Atlanta, Ga.

516 Healey Bldg. H. R. Todd, Gen. Agent Burlington Route
 1518 Healey Bldg. J. S. Rose, Gen. Agent Santa Fe Lines

Boston, Mass.

294 Washington St. F. F. Johnson, Gen. Agent Burlington Route
 212 Old South Bldg. S. Carlson, Dist. Pass. Agt. Santa Fe Lines

Buffalo, N. Y.

692 Ellicott Sq. W. J. Curtis, Gen. Agent Santa Fe Lines

Chicago, Ill.

179 W. Jackson St. { S. J. Owens, Gen. Agt. Pass. Dept. Burlington Route
 Emma W. Bock, Chicago Rep. Burlington Tours
 Jas. R. Moriarty, Div. Pass. Agt. Santa Fe Lines

Cincinnati, Ohio

505 Dixie Term. Bldg. J. C. Boyer, General Agent Burlington Route
 703 Dixie Terminal F. G. Burnett, General Agent Santa Fe Lines

Cleveland, Ohio

980 Union Trust Bldg. P. Palmateer, Dist. Pass. Agent Santa Fe Lines
 406 Hippodrome Bldg. E. H. Smith, General Agent Burlington Route

Des Moines, Iowa

601 Equitable Bldg. J. C. Batham, General Agent Santa Fe Lines
 505 Locust St. D. A. Coffeen, City Pass. Agt. Burlington Route

Detroit, Mich.

708 Transportation Bldg. F. L. Gannaway, General Agent Burlington Route
 504 Transportation Bldg. F. T. Hendry, Gen. Agt. Pass. Dept. Santa Fe Lines

Indianapolis, Ind.

910 Merchants Bank Bldg. O. G. Hagemann, General Agent Burlington Route
 311 Merchants Bank Bldg. E. P. Fisher, General Agent Santa Fe Lines

Kansas City, Mo.

701 Walnut St. H. S. Jones, Gen. Agt. Pass. Dept. Burlington Route
 719 Walnut St. Geo. W. Hagenbuch, Div. Pass. Agt. Santa Fe Lines

Milwaukee, Wis.

221 Wisconsin Ave. F. D. Hunter, General Agent Burlington Route
 1305 Majestic Bldg. J. A. Elmslie, General Agent Santa Fe Lines

Minneapolis, Minn.

507 Metropolitan Life Bldg. F. R. Connell, Passenger Agent Santa Fe Lines
 50 South Sixth St. J. E. Lynn, Gen. Agt. Pass. Dept. Burlington Route

New Orleans, La.

St. Charles Hotel, 708 Common St. G. B. Magruder, General Agent Burlington Route
 601 Whitney Cent. Nat. Bank Bldg. J. A. Fitzgerald, General Agent Santa Fe Lines

New York City

280 Broadway W. S. Dewey, General Agent Burlington Route
 505 Fifth Ave. E. F. Burnett, Gen. Agt. Pass. Dept. Santa Fe Lines

Omaha, Neb.

300 South 16th St. J. W. Sharpe, Gen. Agt. Pass. Dept. Burlington Route

Peoria, Ill.

211 Jefferson Bldg. O. H. Thomas, General Agent Santa Fe Lines
 301 S. Jefferson Ave. H. D. Page, General Agent Burlington Route

Philadelphia, Pa.

602 Finance Bldg., S. Penn Sq. G. C. Dillard, Dist. Pass. Agt. Santa Fe Lines
 1401 Fidelity-Phila. Tr. Bldg. H. K. Miles, General Agent Burlington Route

Pittsburgh, Pa.

208 Park Bldg. C. H. Beach, Dist. Pass. Agt. Santa Fe Lines
 605 Park Bldg. W. V. Taffner, General Agent Burlington Route

St. Joseph, Mo.

110 S. Fifth St. J. D. Baker, Div. Pass. Agt. Burlington Route
 114 South Fifth St. R. M. Bacheller, Div. F. & P. A. Santa Fe Lines

St. Louis, Mo.

416 Locust St. { C. B. Ogle, Gen. Agt. Pass. Dept. Burlington Route
 P. O. Bolerjack, St. Louis Rep. Burlington Tours
 296 Arcade Bldg. E. H. Dallas, Dist. Pass. Agt. Santa Fe Lines

St. Paul, Minn.

228 Railroad Bldg. B. W. Wilson, Dist. Pass. Agt. Burlington Route

J. G. DELAPLAINE, *Manager Burlington Escorted Tours*

547 W. Jackson Blvd. Chicago, Illinois

BURLINGTON
ESCORTED
Burlington
Route
TOURS

