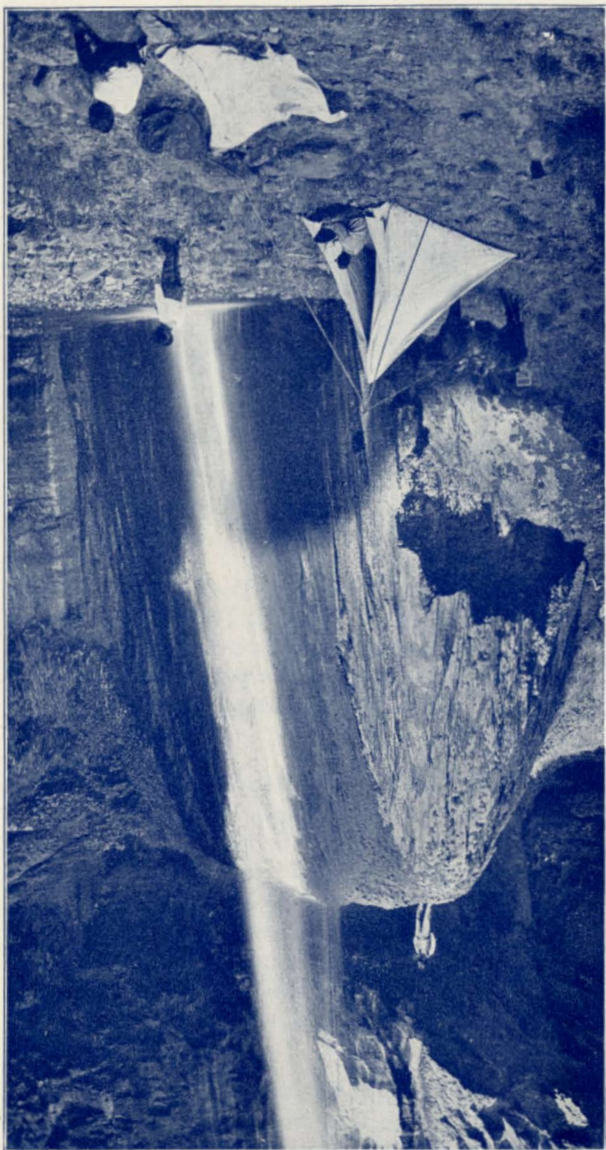
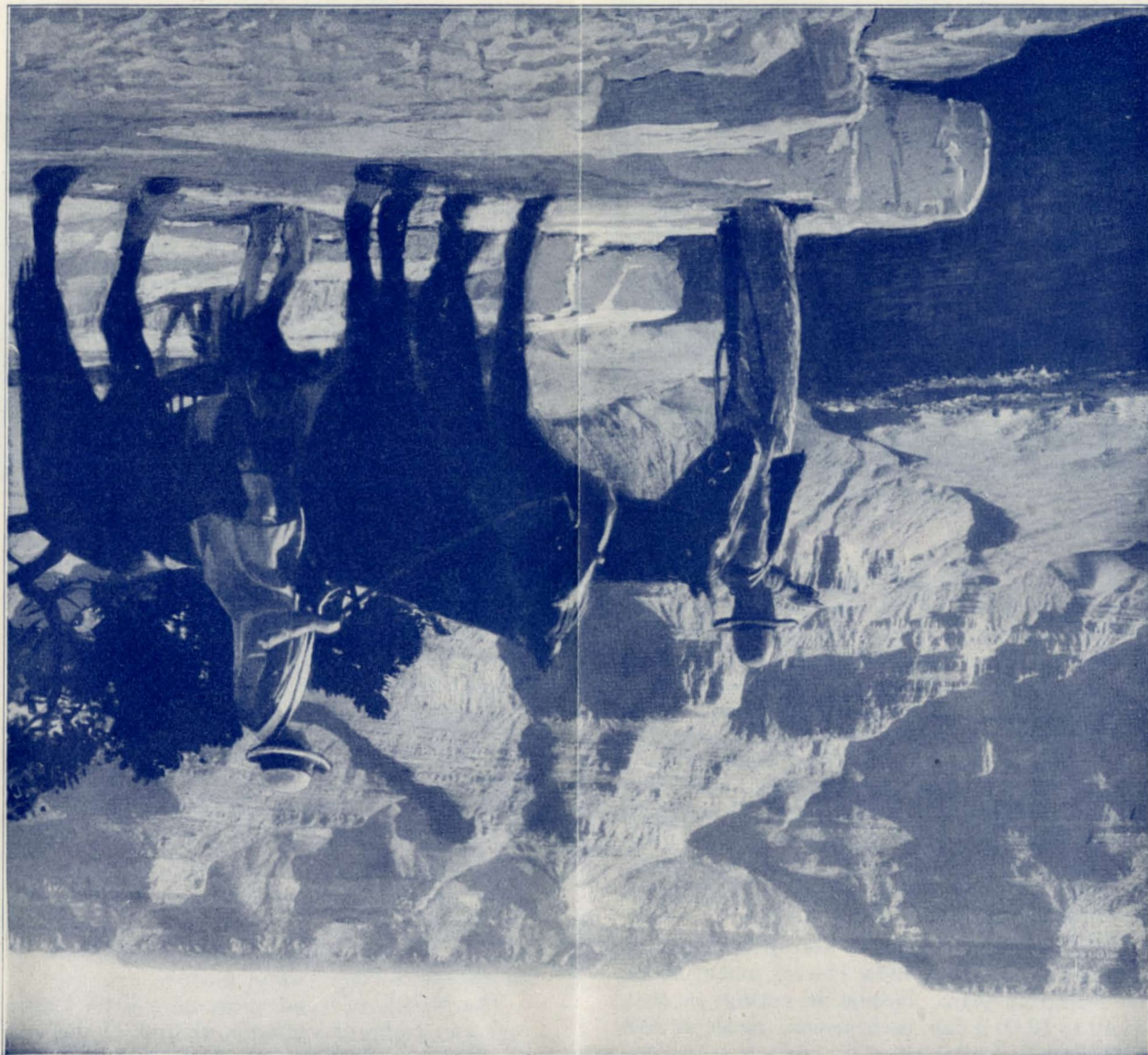


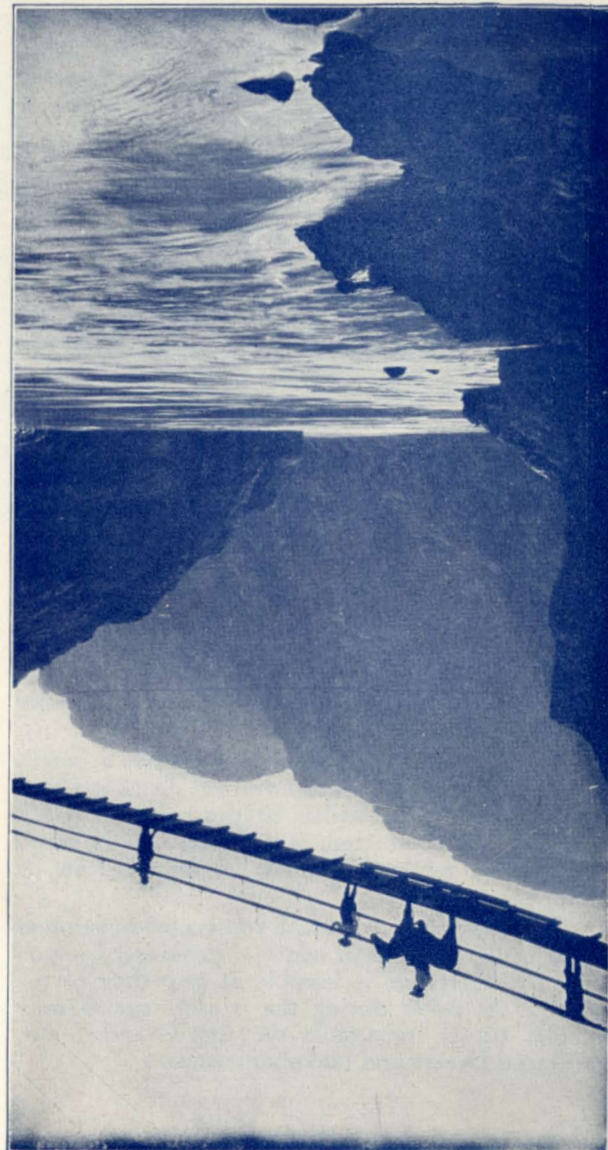
Ribbon Falls near Phantom Ranch



Outlook from Grandeur Point, near El Tovar Hotel

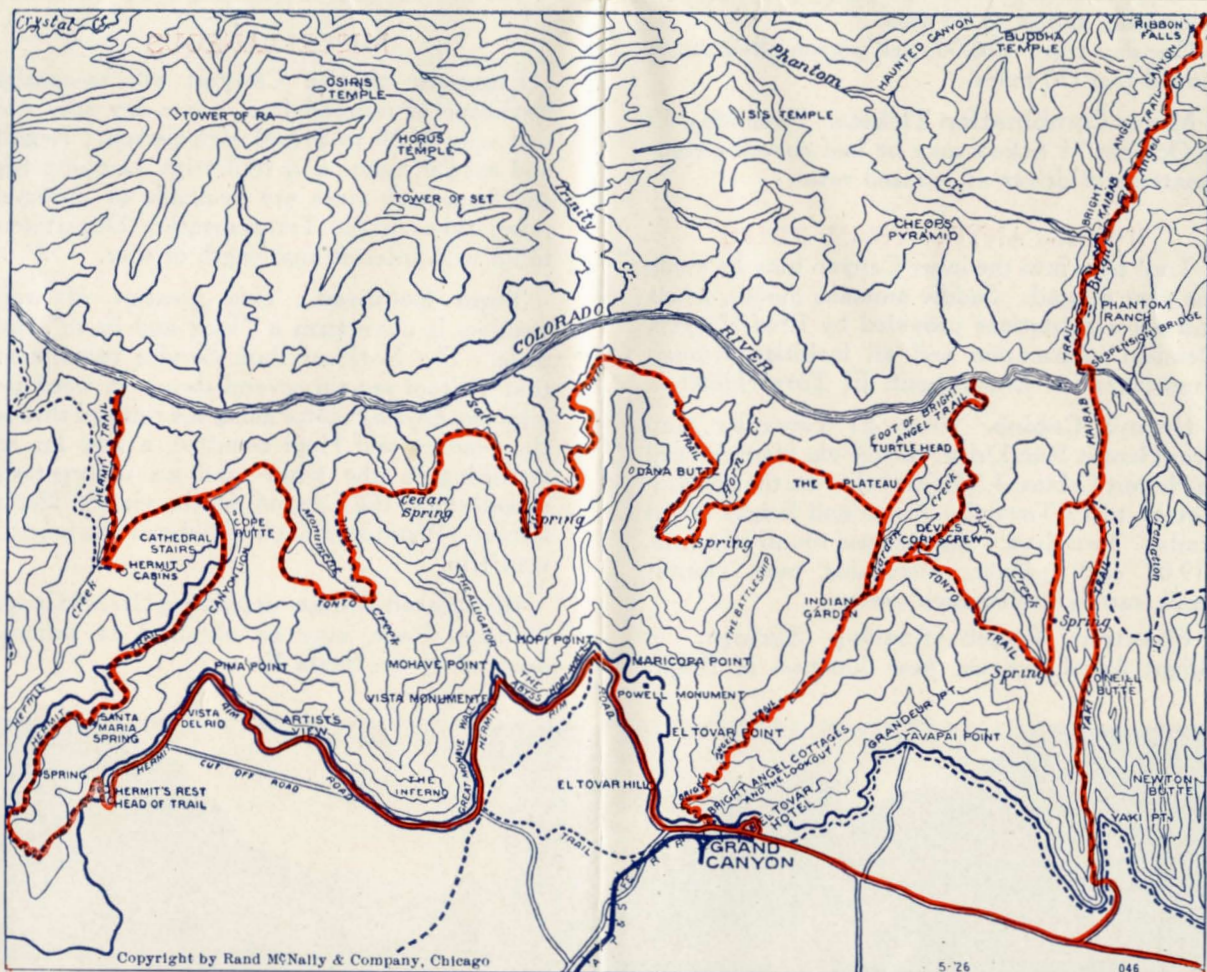


Steel Suspension Bridge across Colorado River



SW
SW
SW

SW
SW
SW



Copyright by Rand McNally & Company, Chicago

5-26

046

SANTA FE REPRESENTATIVES

Alhambra, Calif. 132 W. Main St.
Amarillo, Tex. Santa Fe Station
Atlanta, Ga. 1518 Healey Bldg.
Beaumont, Tex. Hotel Beaumont Bldg., 643 Orleans St.
Berkeley, Calif. 2134 University Ave.
Boston, Mass. 212 Old South Bldg.
Buffalo, N. Y. 591 Ellicott Square Bldg.
Chicago, Ill. 179 W. Jackson St.
Cincinnati, Ohio. 200 Neave Bldg.
Cleveland, Ohio. 980 Union Trust Bldg.
Colorado Springs, Colo. 118 E. Pikes Peak Ave.
Dallas, Tex. 1116 Commerce St.
Denver, Colo. 524 17th St.
Des Moines, Iowa. 601 Equitable Bldg.
Detroit, Mich. 404 Transportation Bldg.
El Paso, Tex. Mills Building
Fort Worth, Tex. 112 E. 9th St.
Galveston, Tex. 411 Twenty-second St.
Glendale, Calif. 119 E. Broadway
Highland Park, Calif. Santa Fe Station
Hollywood, Calif. 6405 Hollywood Blvd.
Houston, Tex. 904 Texas Ave.
Indianapolis, Ind. 311 Merchants Bank Bldg.
Kansas City, Mo. 719 Walnut St.
Leavenworth, Kan. 406 Delaware St.
Long Beach, Calif. 220 W. Ocean Blvd.
Los Angeles, Calif. 743 So. Hill St.
Mexico City, Mex. Edificio High Life Num. 401
Milwaukee, Wis. 1305 Majestic Bldg.
Minneapolis, Minn. 507 Metropolitan Life Bldg.
New Orleans, La. 601-602 Whitney Central National Bank Bldg.
New York City, N. Y. 505 Fifth Ave. (Second floor)
Oakland, Calif. 434 13th St.
Ocean Park, Calif. 165 Pier Ave.
Oklahoma City, Okla. 11 S. Harvey St.
Peoria, Ill. 211 Jefferson Bldg.
Philadelphia, Pa. 601-602 Finance Bldg., S. Penn Square
Phoenix, Ariz. 102 No. Central Ave.
Pittsburgh, Pa. 208 Park Bldg.
Pomona, Calif. 261 S. Thomas St.
Portland, Ore. 508 Spalding Bldg.
Pueblo, Colo. 401 N. Union Ave.
Riverside, Calif. Mission Inn
Sacramento, Calif. 1106 K Street
St. Joseph, Mo. 114 S. Fifth St.
St. Louis, Mo. 296 Arcade Bldg.
Salt Lake City, Utah. 508 Clift Bldg.
San Antonio, Tex. 317 City National Bank Bldg.
San Diego, Calif. U. S. Grant Hotel Block
San Francisco, Calif. 601 Market St.
San Jose, Calif. 15 E. Santa Clara St.
San Pedro, Calif. 121 7th St.
Santa Ana, Calif. 408 No. Sycamore St.
Santa Barbara, Calif. 915 State St.
Santa Rosa, Calif. 516 Fourth St.
Seattle, Wash. L. C. Smith Bldg.
Stockton, Calif. First National Bank Bldg.
Tulsa, Okla. Atlas Life Bldg., 417 S. Boston Ave.
Waco, Tex. 507 First State Bank Bldg.
Whittier, Calif. 125 North Greenleaf St.
Wichita, Kan. Room 103, Union Station
W. J. BLACK, Passenger Traffic Manager, A. T. & S. F. Ry. System,
Chicago, Ill.
J. M. CONNELL, General Passenger Agent, A. T. & S. F. Ry.,
Topeka, Kan.
JAS. B. DUFFY, General Passenger Agent, A. T. & S. F. Ry.—
Coast Lines, Los Angeles, Calif.
F. L. HANNA, Assistant Gen. Pass. Agent, A. T. & S. F. Ry.—Coast
Lines, Phoenix, Ariz.
T. B. GALLAHER, General Passenger Agent, Panhandle and Santa
Fe Ry., Amarillo, Tex.
E. F. ADAMS, General Passenger Agent, G. C. & S. F. Ry.,
ton, Texas.

RAND McNALLY & CO.
CHICAGO

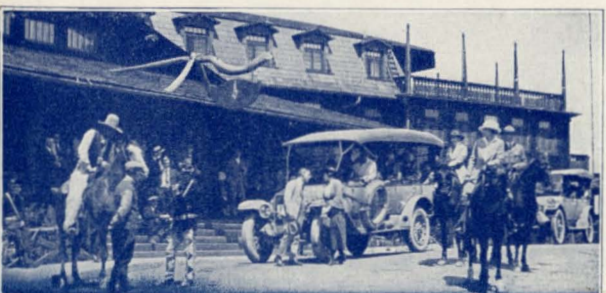
Dec. 1

Stop
Off
and visit—



Grand Canyon
National Park

"all the way"



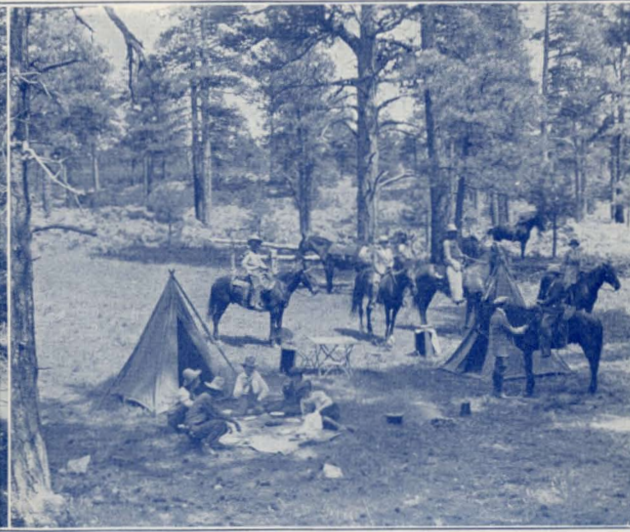
Outing Party Leaving El Tovar Hotel



Hermit Rest



Auto Returning from Painted Desert View



Camping in the Forest

Scenic Wonder of the World

GRAND Canyon National Park is reached by daily trains from Williams, on the Santa Fe main line in Arizona, 382 miles west of Albuquerque.

The chasm of the Grand Canyon has a length of 217 miles. Its greatest vertical depth is about 6,000 feet and its width, at the point to which visitors are conducted, is 13 miles. A hundred Yosemite might lie almost unperceived in its immense reaches.

The climate on the south rim is cool in summer and generally mild in winter. A Grand Canyon outing, therefore, is feasible at any time of the year. At times during the winter, snows may make travel impossible on the Grand View, Painted Desert and Navahopi roads.

THE SIDE TRIP

The Canyon side trip is quickly made on a branch of the Santa Fe. This line is built from Williams north 64 miles to the rim near the head of Bright Angel Trail.

Double daily train service between Williams and Grand Canyon, a trip of about three hours each way. Connections are made with nearly all main line trains. Some of these branch trains carry parlor car in addition to the usual coaches.

Daily through Pullmans between Chicago and California—both east and west bound—are operated via Grand Canyon on certain trains.

Stop-over not to exceed ten days is granted at Williams on all classes of railroad tickets for a visit to the Canyon. Apply in advance to train conductors. Limits of through railroad tickets will be extended, if necessary, by agent at Grand Canyon.

Baggage storage charges accruing at Santa Fe stations account Grand Canyon side trips are waived on presentation of side trip certificate obtained at Grand Canyon.

Railroad Fare. Through tickets may include side trip coupons, Williams to Grand Canyon and return, at an additional charge of \$9.12.

Pullman Fares. Through Pullman tickets may be had via the Grand Canyon at an additional charge, including surcharge, of \$4.50 for lower berth—proportionately higher for compartment or drawing-room.

HOTEL ACCOMMODATIONS

El Tovar, the Santa Fe hotel at Grand Canyon, is under Fred Harvey management. It is located on the rim near the railway terminus. The hotel is built in rustic style and contains ninety-three sleeping rooms. The cuisine is Harvey's best. Every modern convenience is provided.

The hotel is conducted on American plan, i.e., room and meals both included. Room without bath, \$7.00 a day each person; room with bath, \$9.00 each person. A reduction of 50 cents per day each person is made when two persons occupy one room with double bed. A few rooms with bath carry a higher rate. Meals only: breakfast \$1.25, luncheon, \$1.50, dinner \$1.75.

Bright Angel Cottages are operated as an adjunct to El Tovar, under Harvey management, on European plan. Rooms, in cottage or tent, \$1.50 to \$2.00 a day, each person; meals at cafe, a la carte.

Harvey Indian exhibits are placed in the Hopi House, occupied by Indians and adjacent to El Tovar.

Grand Canyon passengers who stop off between trains at Williams will find excellent service at the station hotel, Fray Marcos, managed by Fred Harvey; meals at cafe, a la carte.

SUMMER TOUR TICKETS

- No. 1. Combination ticket to cover Hermit Rim Drive in morning and Desert View in afternoon. Rate, \$9.00. (Regular rates \$11.00).
- No. 2. Combination ticket to cover Hermit Rim Drive and Desert View Drive on first day as above and Moencopi Indian Village Drive on second day. Rate, \$22.00. (Regular rates, \$26.00).

These Summer Tour Tickets are on sale at El Tovar Hotel and Bright Angel Camp from May 15th until October 31st and at other times when road conditions are suitable.

RIM ROADS AND TRAILS

Hermit Rim Road, to head of Hermit Trail, is a macadamized driveway built west along the rim, close enough to give views of the chasm



Looking East from Lincoln Point



Gorge of Little Colorado River on Navahopi Road

below. Hermits Rest, at end of rim road, provides shelter and light refreshments. Round-trip, 16 miles. Rate, \$3.00 each person.

Grand View is thirteen miles east of El Tovar. The round-trip by auto through the pines is made in less than four hours. Rate, \$4.00 each person.

Painted Desert View. At this point there is a far outlook westward down the river and northward up the river, with a panorama of the Painted Desert, toward Hopiland. Round-trip, 64 miles. Rate \$8.00 each person.

Navahopi Road. From May to November motor trips will be operated from El Tovar over the new Navahopi Road to Tuba City, capital of the Western Navajo Reservation, and to Moencopi, a Hopi Indian pueblo.

The Navahopi Road opens up a little known region and affords visitors a glimpse of the vast Southwestern Indian reservations. Fifty miles of the awesome Canyon of the Little Colorado; a 100-mile panorama of the Painted Desert; and Melgosa Petrified Forest, are but a few of the interesting things to be seen.

One-day trip—\$16.00 each person all-expense. Round-trip 170 miles.

Motor Combination Tickets. From May 15 to October 31 tickets may be had covering combinations of drives at reduced rates.

INNER-CANYON TRAIL TRIPS

Trail trips into the inner Canyon may be made the year around. Saddle animals, guides, meals and accommodations provided by Fred Harvey. Detailed information and all facilities through Transportation Department, El Tovar Hotel.

Hermit Cabins. From El Tovar by auto over Hermit Rim Drive, thence via Hermit Trail to Hermit Cabins, 3,500 feet below on the plateau. Return to El Tovar by Tonto and Bright Angel trails. Two days. All-expense round-trip rate, \$19.00 each person. Returning over Hermit Trail, rate is \$18.00 each person.

Phantom Ranch—Roaring Springs, in Bright Angel Canyon, near junction of Bright

Angel Creek and Colorado River and 4,500 feet below south rim. From El Tovar via Yaki and Kaibab Trails and return. Two days. All-expense rate, \$22.00 each person. Optional side trip to Ribbon Falls adds one day; total all-expense rate, \$33.00.

Hermit Cabins—Phantom Ranch—Ribbon Falls—Roaring Springs. Four memorable days. El Tovar over Hermit Rim Drive and down Hermit Trail to Hermit Cabins; Hermit Cabins to Phantom Ranch via Hermit Loop Trail and new suspension bridge; Phantom Ranch to Ribbon Falls and Roaring Springs and return; Phantom Ranch back to El Tovar over Yaki Trail. All-expense rate, \$40.00 each person.

Bright Angel Trail to Colorado River—One day. Round-trip rate, \$6.00 each person, lunch extra, except to El Tovar guests. Bright Angel Trail to inner plateau—One day. Round-trip rate, \$5.00 each person, lunch extra, except to El Tovar guests.

MISCELLANEOUS

Expenses at the Canyon are reasonable. Exclusive of railroad fare, a one-day stay need cost only \$7.50 to \$17.00 each person. Regular and special motor and trail trips, camping trips and horseback rides are available at minimum rates, through the Transportation Department, to fill with interest any length of stay.

Time Required. This greatest of world wonders is more than a "look and leave" spectacle. The National Park Service recommends that visitors remain several days. A week permits two days by motor along the rim and through the Navajo and Hopi country; a day for rest or riding in the pines—and an unforgettable experience in the Canyon depths via the Hermit Cabins—Phantom Ranch—Ribbon Falls four-day trail trip.

Illustrated folder, describing Grand Canyon National Park, may be obtained at principal agencies of the Santa Fe.



On Tonto Trail—Inner Canyon



Phantom Ranch



Hermit Cabins



Colorado River—End of Hermit Trail