



Looking East from Yaki Point, Grand Canyon National Park, Arizona

FROM A NATURAL COLOR PHOTOGRAPH



*Fred Harvey*

May We Suggest A Glass or Bo  
Sauterne or Claret, glass .35

Eastern Beer

-- WINE LIST O

## A La Carte

### COCKTAILS

Orange Juice 30 Chilled Tomato or Fruit Juice 25 Shrimp Coektail 75  
Guacamole Monterey 25 Celery Hearts 35 Pickled Beets 20  
Smoked Salmon 50 Green Onions 20 Radishes 20  
Mixed Olives and Celery Hearts 50 Marinated Herring 50  
Italian Salami 30 Half Grapefruit 25 V-8 Cocktail Juice 25

### SOUP

Old Fashioned Split Pea Soup .25 Consomme A B C .25

### ENTREES

Poached Filet of Baby Halibut, Sauce Diepoise 1.75  
Omelette Creole, Rasher of Bacon 1.50  
Braised Veal Shank, Pan Gravy, Rice Milanaise 1.90  
Roast Young Tom Turkey, Sage Dressing, Cranberry Sauce 2.00  
Half Milk Fed Chicken Broiled on Toast 2.25  
Pan Fried Calf Liver and Bacon, Sauce Bercy 1.90  
Cold Corned Beef Brisket, Cheddar Cheese, Corn Relish 1.90

### A LA CARTE

#### Vegetable & Potato

Olivette Potatoes .25 Creamed Cauliflower .25

#### • SALAD •

Lettuce and Tomato, French Dressing .35

---

Charcoal Broiled

### Sirloin or Tenderloin Steak

**\$4.00**

Long-Branch Potatoes Tossed Salad Dinner Rolls and Butter  
(All Expense Tour Tickets, Not Honored on Steak Dinner)

---

#### Desserts & Cheese

Apricot Tart .25

Apple Pie .25

Vanilla or Chocolate Ice Cream .25 Chocolate Sundae .35

Layer Cake .20 Fruit Gelatin .20

American, Cheddar, Blue, Port Du Salut, or Swiss Cheese .50

#### Beverages

Milk, bottle .15 Tea, pot .25 Coffee, cup .15 Coffee, pot .25

---

Not responsible for loss of wearing apparel or personal effects

ittle of Wine with Your Order

Carling's Red Cap Ale, bottle .35

, bottle .30

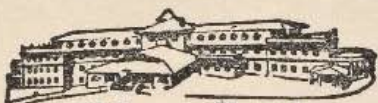
ON REQUEST --:

IAL!!!

ni on

Rocks

c



**El Covar Hotel**

GRAND CANYON NATIONAL PARK, ARIZONA

Wednesday, August 5, 1953

### Table D'Hote Dinner

Choice of One

V-8 Cocktail Juice	Chilled Tomato or Fruit Juice
Mixed Olives and Celery Hearts	Pickled Beets Smoked Salmon
Guacamole Monterey	Italian Salami Marinated Herring

Old Fashioned Split Pea Soup

Consomme A B C

**PRICE OF ENTREE DETERMINES THE COST**

Poached Filet of Baby Halibut, Sauce Diepoise	2.25
Omelette Creole, Rasher of Bacon	2.00
Braised Veal Shank, Pan Gravy, Rice Milanaise	2.65
Roast Young Tom Turkey, Sage Dressing, Cranberry Sauce	2.75
Half Milk Fed Chicken Broiled on Toast	3.00
Pan Fried Calf Liver and Bacon, Sauce Bercy	2.65
Cold Corned Beef Brisket, Cheddar Cheese, Corn Relish	2.65

Olivette Potatoes

Creamed Cauliflower

• SALAD •

Lettuce and Tomato, French Dressing

Choice of One

Apricot Tart

Apple Pie

Layer Cake

Fruit Gelatin

Vanilla or Chocolate Ice Cream

Cheddar Cheese

American Cheese

Coffee

Tea

or

Milk

Breakfast 7 to 9

Luncheon 12 to 2

Dinner 6 to 8

In addition to prices listed, 1% State Sales Tax, will be collected.



### *The Watchtower at Desert View*

is the climax of the famous Grand Canyon Rim Drive, which should not be missed by any visitor. Of all the incredible vistas studying the 32-mile scenic highway, Desert View is considered the finest. Located at the terminus of the East Rim Drive on the highest point of the South Rim, the Watchtower commands a spectacular view of the Canyon, the Colorado River, and of deserts, forests and mountains—a "magic circle" equaled by no other sight on earth.

## GRAND CANYON NATIONAL PARK

in Arizona encompasses one of the world's greatest natural wonders—the titanic canyon for which it is named.

Cut by the turbulent Colorado River during millions of years, the Grand Canyon of today is 217 miles long, 4 to 18 miles wide, and a mile deep. Rising from its depths are whole ranges of mountains, ridges and intermediate plateaus slashed by hundreds of side canyons only slightly less incredible than the main gorge. Over the rock temples and majestic walls spreads a sea of ever-changing colors, ranging from the blue and purple shades of early morning and late evening to the brilliant yellow and vermilion hues of the noonday glare.

The South Rim of the Grand Canyon is easily reached by the Santa Fe Railway, or by automobile over Arizona Highway 64 branching off U. S. Highways 66 and 89.

Of the many activities and sightseeing trips offered to Grand Canyon visitors, the Grand Canyon Rim Drives provide the best opportunity to see much of the Canyon in a short time. An even more thrilling inspiration is an inner-canyon trip on muleback, an adventure no able-bodied visitor should miss.

All hotels and facilities on the South Rim are open throughout the year, and motor and trail trips are operated on a year-'round schedule.

