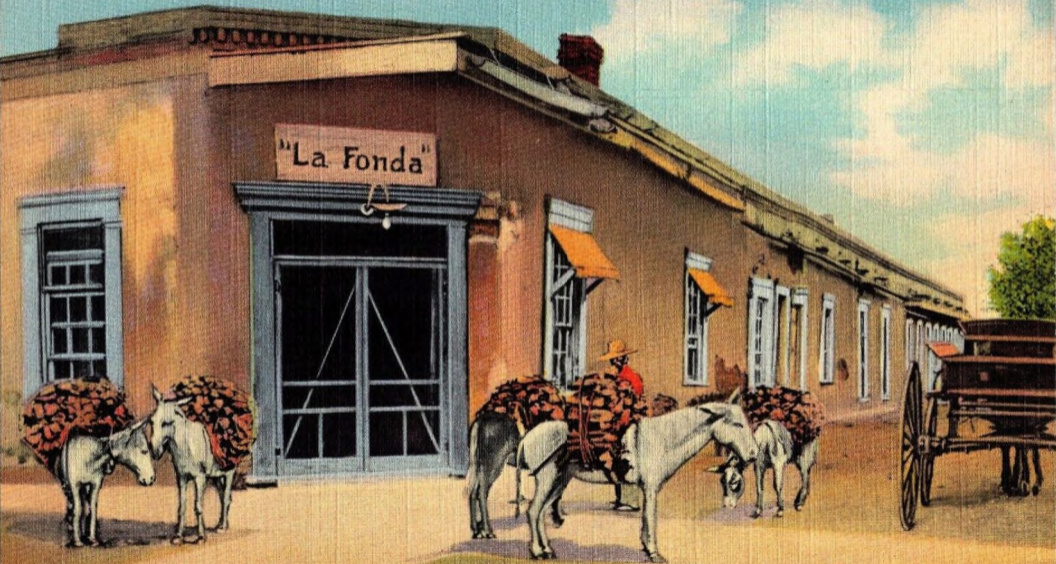


"La Fonda"



No. 134 ANCIENT LA FONDA

For generations this ancient hostelry stood in Santa Fe, New Mexico, at the end of the Santa Fe Trail. Here it was that the old stage-coaches and traders' caravans halted after the arduous and dangerous journey across mountain and prairie from "The States". It was the rendezvous of celebrities, pioneers, traders, gamblers and adventurers in the "early days". With the coming of the railroad and the disuse of "The Trail" La Fonda fell into decay and ruin, but when the automobiles in ever increasing numbers revived the historic Santa Fe Trail, a beautiful modern hostelry was erected on this site.

GENUINE CURTEICH-CHICAGO "C.T. ART-COLORTONE" POST CARD (REG. U. S. PAT. OFF.)

POST CARD

PLACE
ONE CENT
STAMP
HERE

7A-H2389