

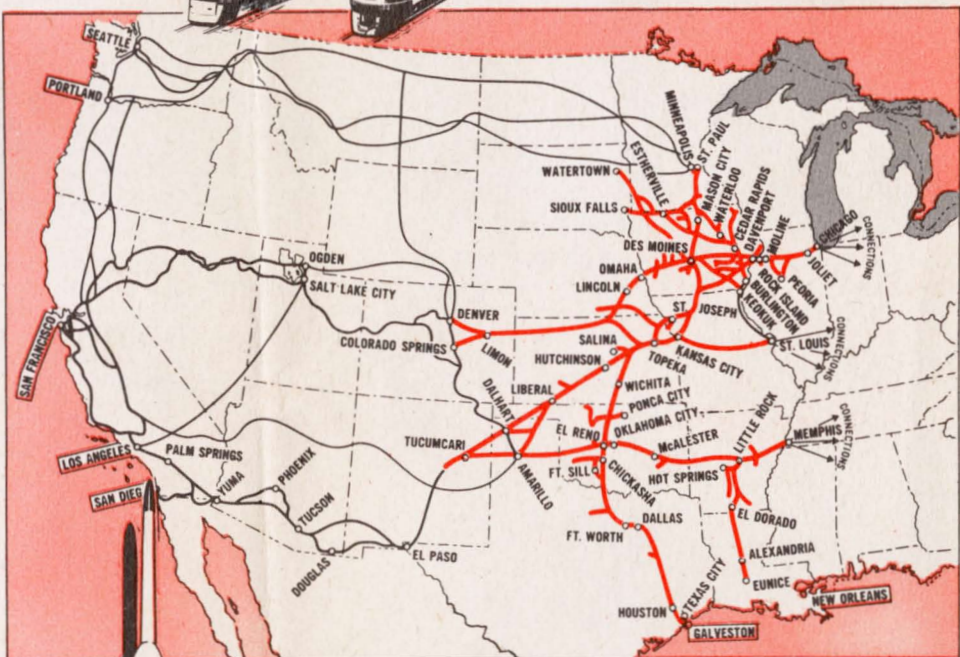
Edwin
President

Rock Island Lines is happy to present for your pleasure the 1949 version of our Rocket Village . . . a "taste" of the gay Fiesta atmosphere of the Southwest; a glimpse of the Colorado Rockies; a striking contrast of the old and new in Dining Cars, dancing, movies, entertainment, refreshments . . . at your service! We sincerely hope you enjoy your visit to Rocket Village—it's our way of saying "thank you" for your patronage.

Rock Island Lines is happy to present for your pleasure the 1949 version of our Rocket Village . . . a "taste" of the gay Fiesta atmosphere of the Southwest; a glimpse of the Colorado Rockies; a striking contrast of the old and new in Dining Cars, dancing, movies, entertainment, refreshments . . . at your service! We sincerely hope you enjoy your visit to Rocket Village—it's our way of saying "thank you" for your patronage.

ROCKET VILLAGE

Welcome to



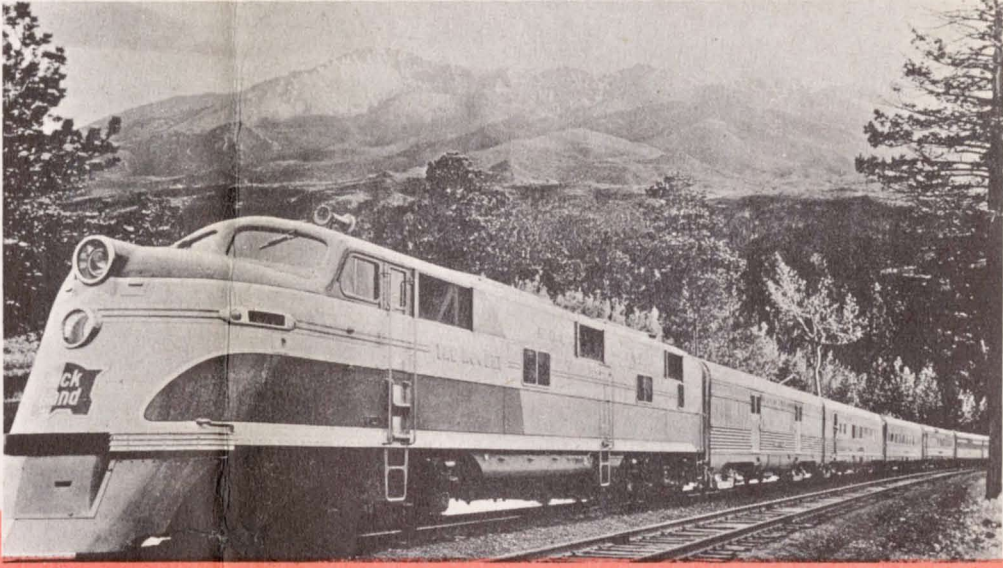
"PROVING GROUND" OF THE ROCKETS . . . at White Sands, N.M., on the Golden State Route, scientists are experimenting with aerial rockets . . . but in our 14-state midwest "proving ground," huge Diesel-powered ROCKETS are a down-to-earth reality! Yes, Rock Island's streamlined fleet of Rocket passenger trains and fast Rocket Freights are making rail history for swift, dependable transportation. When you travel or ship, use the Rockets—use Rock Island!

ROCK ISLAND LINES
THE ROAD OF PLANNED PROGRESS



Rock Island
Seeing
ROCK ISLAND
at the
CHICAGO RAILROAD FAIR
1949

A PICTURE *Story of Rock Island* PROGRESS!



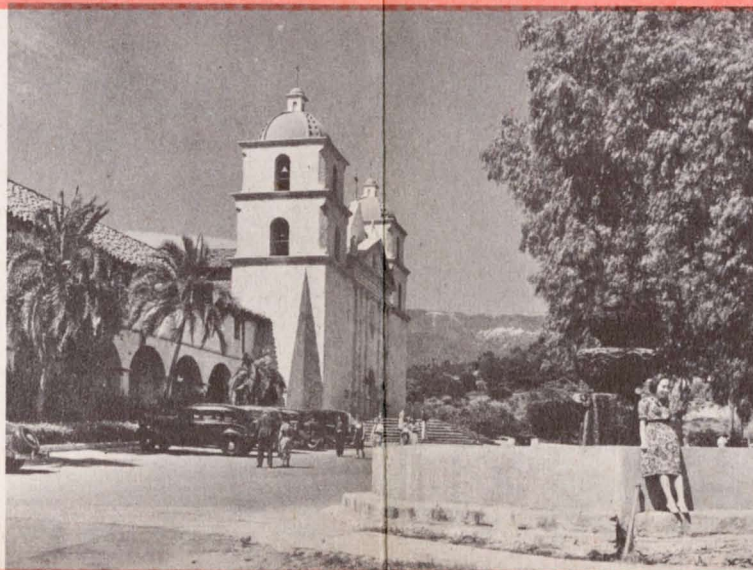
THE ROCKETS—A deluxe fleet of streamlined, Diesel-powered trains serving the midwest, from Chicago to Colorado . . . from Texas to the Twin Cities. For business trips or vacation pleasure, go Rocket—it's smooth, speedy, dependable transportation at its best in coach, parlor or sleeping car. There is no extra fare on any Rocket train!



ROCKET FREIGHTS—A new concept of freight service providing expedited schedules between major terminal points, speeding up deliveries to intermediate cities as well. Rocket Freight service is being expanded this year with the delivery of new, powerful Diesel freight locomotives. Freight shippers know that Rocket Freight means faster freight.



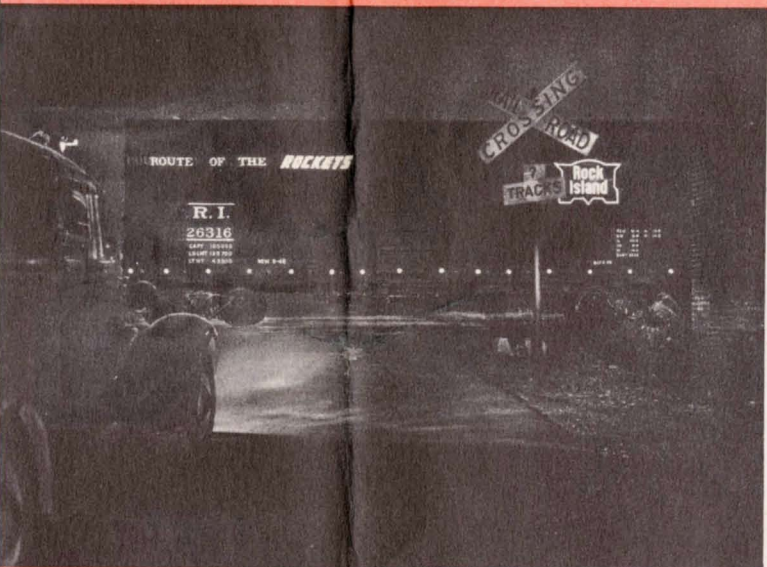
COACH COMFORT—Here's the last word in comfort for Coach patrons . . . the new, streamlined Chair Cars on Rock Island's luxurious Golden State between Chicago and Los Angeles. Deep-cushioned adjustable seats with full-length leg rests . . . pillow and porter service, too! Budget-minded travelers ride Rock Island Chair Cars in comfort—and save!



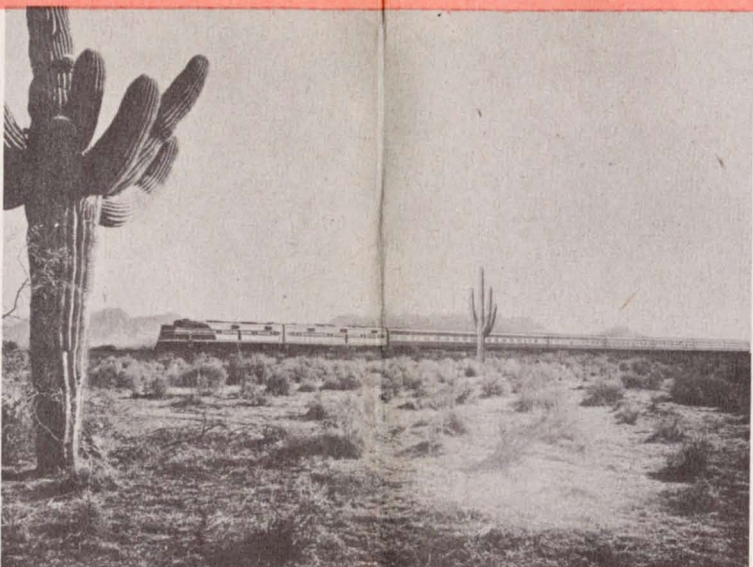
CALIFORNIA—America's most popular vacation playground! Plan at least one trip to the Golden State, with its contrasts of ocean beaches, mountain resorts, glamorous Movieland, historic missions and cosmopolitan entertainment. Go the Rock Island's scenic, low-level, Golden State route. Two fast daily trains—the Golden State (extra fare) and the popular Imperial.



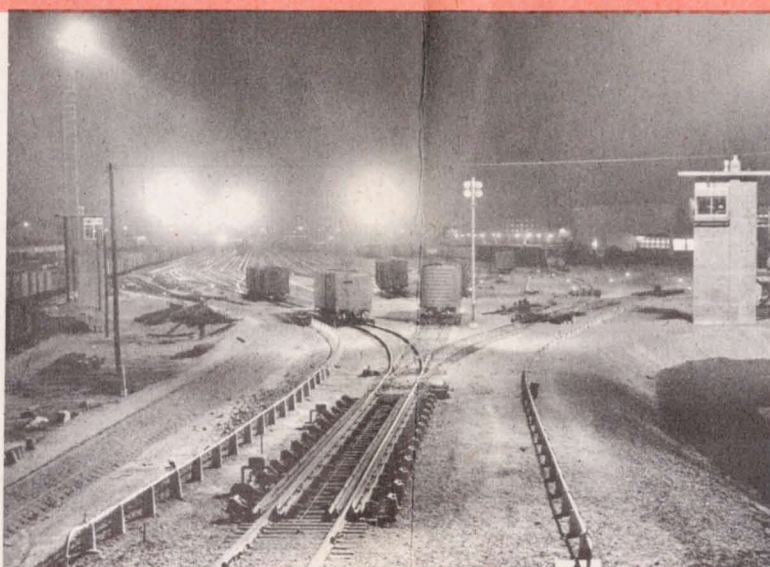
FIESTA CAR—Symbolic of the entire Southwest served by Rock Island Lines, our famous Fiesta Dining Car sets the motif for this year's Rocket Village at the Railroad Fair. It presents a striking contrast with the old-time Palace Dining Car, also on display at the Fair.



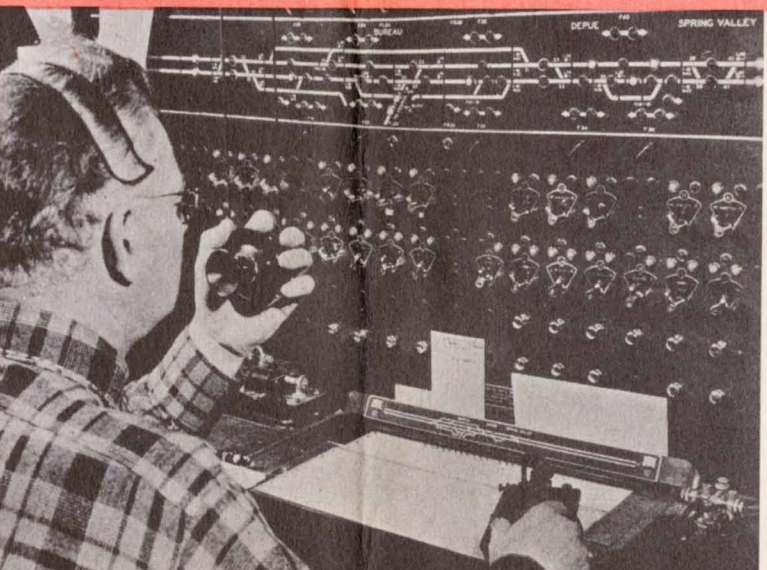
NEW "SAFETY SIGNS"—Even that commonplace workhorse of the railroad, the boxcar, gets a new look! Special reflecting material applied to the cars picks up headlight beams from your auto, can be seen for considerable distance—another measure adding to the safety of grade crossings.



THE SOUTHWEST—As winter vacations become more popular, increasing numbers of travelers are turning to the picturesque desert regions of Texas, New Mexico, Arizona and California, served by Rock Island trains. Winters are dry, warm and sunny—spring a riot of desert bloom. Rock Island representatives can help you select an ideal ranch or resort for your next trip.



"SORTING" FREIGHT CARS—Ever wonder how a railroad keeps its many freight cars moving from one train to another? Here's one answer in Rock Island's new Kansas City "hump" yard, which classifies 4,000 cars daily. The 40-track layout includes special pneumatic retarders to "baby" the cars, floodlights for night operations, automatic machines to ice refrigerator cars.



TRAFFIC CONTROL—This is the Centralized Traffic Control console . . . its control alert operator knows the position of every train in his area. He sets the signals and is in constant touch with way stations by telegraph and telephone, talks directly with radio-equipped trains. Result—greater safety, faster train movements, in larger volume.



SAMSON OF THE CIMARRON—Typical of Rock Island progress in the improvement of its right-of-way is this huge span at Liberal, Kansas. More than 1,200 feet long and rising more than 100 feet above the river, the bridge shortened the old line 3.6 miles. Rock Island's continuous maintenance program is eliminating curves, leveling roadbed, increasing traffic speed.



*Route of the Rockets
and the Rocket Freights*