

To the American Public:

WHEN plans for summer vacations are being made, I want to urge American people to visit our National Parks. These areas, mostly in the mountains, offer to visitors an ideal combination of superb scenery, healthful living conditions, and accommodations carefully planned to meet all requirements.

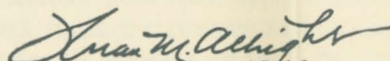
Throughout the season all of the great western railroads furnish special service on their park lines. The rates are very reasonable, schedules are planned to provide convenient connections between trains from different parts of the country, and the service itself is excellent. After more than fifteen years spent in almost constantly traveling about the United States, *I am more than convinced that the railroads furnish the most convenient and comfortable mode of transit.* Especially is this true within the last half dozen years, when many innovations in train service, all designed to increase the comfort of the rail traveler, have been installed.

The development of travel facilities to and in the National Parks has reached the stage where the railroads, the operators of hotel, transportation, and other facilities within the parks, and the National Park Service of the Federal Government cooperate in insuring visitors the best possible results from a visit to the National Parks in a minimum of time.

For the convenience of visitors on quick schedule, arrangements have been made whereby their trips in a park can be planned and tickets covering transportation and lodging purchased when the rail ticket is obtained. The park ticket covers regularly scheduled trips, approved by the National Park Service, and planned so as to include all the main points of interest.

Especially interesting is the conducted tour, a form of railroad service which entirely frees those using it from responsibility. Tickets for such tours cover railroad expenses, including meals, and the cost of the park tour. Reservations are made by the guide conducting the party, baggage is checked and moved, and everything possible done to insure a carefree vacation for the members of the party. This form of traveling is especially recommended for people traveling alone and for those making their first trips into the parks.

Whether only for transportation, for the planning of transportation and park visits and purchasing of tickets therefor, or for the conducted tour, *I can not too strongly recommend the service provided by the railroads.* Train travel in these days of modern, luxurious equipment is a restful prelude to a national park vacation.


Director, The National Park Service,
Department of the Interior,
Washington, D. C.

READ THIS IT WILL SAVE YOU MONEY

EFFECTIVE July 9th and 23rd and August 6th and 20th, special round trip, fifteen-day-limit tickets will be on sale from Chicago to Denver, Colorado Springs, and Pueblo at fare of \$30.00, St. Louis \$26.25, Kansas City and Omaha \$18.25—corresponding fares from other points. (From Memphis July 2nd and 16th and August 6th and 20th, \$32.00.)

On these dates Tours C, E, F, G, H, K, M, and N will be proportionately reduced in price; and in addition we will offer special 8- and 12-day escorted all-expenses-included Colorado tours at surprisingly low cost.

A still further reduction in fares to Colorado points indicated will be made on July 2nd and 30th, August 13th, and September 3rd, with return limit of seven days in addition to date of sale, with proportionate fares from other points:

	From Chicago	From St. Louis	From Kan. City & Omaha
Good in coaches	\$20.50	\$18.00	\$12.50
Good in Pullmans	30.00	26.25*	18.25*

*Pullman fare additional.

On the latter dates attractively-priced all-expenses-included escorted Colorado tours will be available from Chicago and certain other cities at real bargain prices.

Upon request to nearest Rock Island representative indicated in time table or to D. M. Wootton, Manager Vacation Travel Service Bureau, 714 LaSalle Station, Chicago, Ill., special folders giving complete information about these outstanding outing opportunities will be mailed.



Something New in Summer Outings



WOULDN'T you like to go Romany-roving through the glorious Colorado Rockies, Yellowstone Park, or both—or perhaps California—auto-spinning over majestic mountain trails—or just lazing along, as you feel the urge? Not on a tour—in the usual sense—but by yourself, or with two or three congenial friends—following a schedule of your own choosing—absolutely carefree, nothing to worry you—the entire trip bound up in a little book, out of which you tear coupons to pay for dining car or other meals, lodging, or motor expeditions, as you may desire to make them.

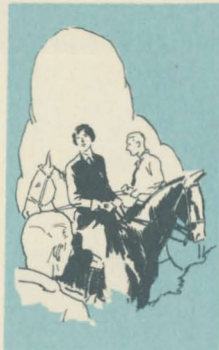
Think of the charm of such a vacation—gypsy-jaunting through a gigantic fairyland—carpeted with wild flowers—painted by Nature in colors of the rainbow—and over-arched by the canopy of a turquoise sky.

What games of golf and tennis in the wine-like air! What delights in trout-stream, bridle-path, and moonlit lake—and what recollections when vacation is over—a thousand new pictures of matchless grandeur, reproduced again and again upon the screen of memory!

There is now a way to make this an actual experience—through a personalized go-as-you-please plan—every detail arranged and paid for before starting.

Several plans of this kind are outlined herein—offered merely as suggestions. (Day-by-day itineraries may be secured as indicated on page 14.) The Colorado tours presented range in cost from \$120 to \$188.50 from Chicago; and Colorado-Yellowstone tours from \$180 to \$226 (correspondingly low from other points). From them you can get an idea as to what can be done for the sums quoted. Your tour can be adjusted to the sum you wish to pay. With three exceptions, these suggested tours cover the usual two-weeks period; but if your vacation exceeds that length of time, or if you wish a tour either more or less extensive than any of those described, let the nearest Rock Island Vacation Travel Service Bureau representative know

ONLY DIRECT LINE WITH INDEPENDENT SERVICE



just what you would like to do, and a complete itinerary, including cost, will be prepared and submitted without any obligation whatever on your part. The low cost—much less than if individually arranged—will surprise you.

Think of a two-weeks outing in Colorado for only \$125 from Chicago (proportionately low from other points)—and if two persons occupy a lower berth, as low as \$114.12 each!—an outing including every travel luxury en route, an attractive room, wholesome, well-cooked meals at a comfortable hotel, located in the shadows of famous Pike's Peak, with auto trips to the summit of Pike's Peak and other principal attractions of the Colorado Springs region—Garden of the Gods, Cave of the Winds, South Cheyenne Canyon, Seven Falls, Broadmoor District; then, a rail trip to Denver and a motor tour through Denver's Mountain Parks—up fascinating Lariat Trail to Lookout Mountain and down through beautiful Bear Creek Canyon!

This plan is offered by one railroad exclusively—the Rock Island. Under the arrangements, as outlined, your coupon-book not only pays your bills, but serves as a card of identification on the trip and insures special attention at the hands of railroad and hotel employees, motor car operators, and all who serve you.

A change of plan may be effected, even after the tour has been begun, by conferring with the nearest Rock Island representative; and if, for any reason, you should fail to use the book or any of its coupons, the value of the unused part will be refunded.

Whether you travel extensively or elect to spend practically all your time in one place—at some favorite hotel or lodge or on some ranch—the Bureau will serve you with equal facility, making all reservations and handling the vacation as a whole for a given sum.

Note particularly that several of these tours provide for the going trip directly to Colorado Springs and the return trip directly from Denver—or vice versa. This is possible only on the Rock Island. It is the only road operating separate direct lines and independent through service to and from both Colorado Springs and Denver.



Tour C

Comprehensive - Restful
Delightful

TIME—TWO WEEKS

	With rail fare	Without rail fare
From Chicago	\$152.00	\$108.95
From St. Louis	143.75	105.95
From Memphis	159.00	108.95

ON arrival at Colorado Springs you will find the hotel car waiting to transfer you to hotel indicated on coupon, where you enjoy a room with bath. Here, your coupon-book provides for auto-trips to feature attractions—Garden of the Gods, Cave of the Winds, South Cheyenne Canyon, Seven Falls, Broadmoor District, and to the summit of Pike's Peak. The mountain trip may be made one way by cog road if you prefer.

Next, by rail to Denver where, after getting settled in a room with bath, you are taken for a sight-seeing trip through the parks and business and residence sections. Then—the next day usually—a 93-mile motor spin up the South St. Vrain route to Estes Park for a stay of seven days in one of the attractive lodges. Here, every form of mountain sport is available, and the evening entertainments and social life are very enjoyable.

The return to Denver leads through the famous

Big Thompson Canyon, and the start homeward is made from Denver directly.

Tour E

Hikers' Special - Alpine
Lakes and High Peaks

TIME—TWO WEEKS

	With rail fare	Without rail fare
From Chicago	\$151.00	\$107.95
From St. Louis	142.75	104.95
From Memphis	158.00	107.95

INCLUDES a stop at hotel in Colorado Springs (room with bath) long enough to enjoy auto trips to the principal scenic features of the district and a trip to the top of Pike's Peak.

Then, by rail to Denver, where the first motor jaunt provided takes you through Denver's Mountain Parks—up the switchbacks of Lariat Trail to Lookout Mountain. Next, a 93-mile spin through Boulder, Lyons, Allen's Park, Long's Peak District, and Tahosa Valley to Estes Park Village; thence to Bear Lake Lodge in the heart of Rocky Mountain National Park. Here a stay of three days is provided to give you a chance to explore either on foot or horseback, the streams, lakes, and peaks of the surrounding terrain—the

◀ COLORADO — 100,000 SQUARE MILES OF GRANDEUR



Dream Lake Country, Tyndall Gorge, Lake Mills, Glacier Gorge, Lochvale. Lunches are put up for those who will be away from the lodge all day.

From Bear Lake Lodge to Fern Lake Lodge—a hiking trip—and another stay of four days to permit trips to Limber Mountain, Spruce Canyon, Spruce Lake, The Castle, Hour Glass Lake, Rainbow Lake, Sprague's Glacier.

Then, back to Estes Park by way of Fern Lake Trail and on to Denver, through Big Thompson Canyon—an inspiring mountain drive.

From Denver—directly home.

Tour F Pike's Peak Region, San Isabel National Forest, Denver, Rocky Mountain National-Estes Park

TIME—TWO WEEKS

	With rail fare	Without rail fare
From Chicago	\$188.50	\$145.45
From St. Louis	180.25	142.45
From Memphis	195.50	145.45

HERE is a tour that covers all the scenic attractions of the three principal tourist regions of Colorado.

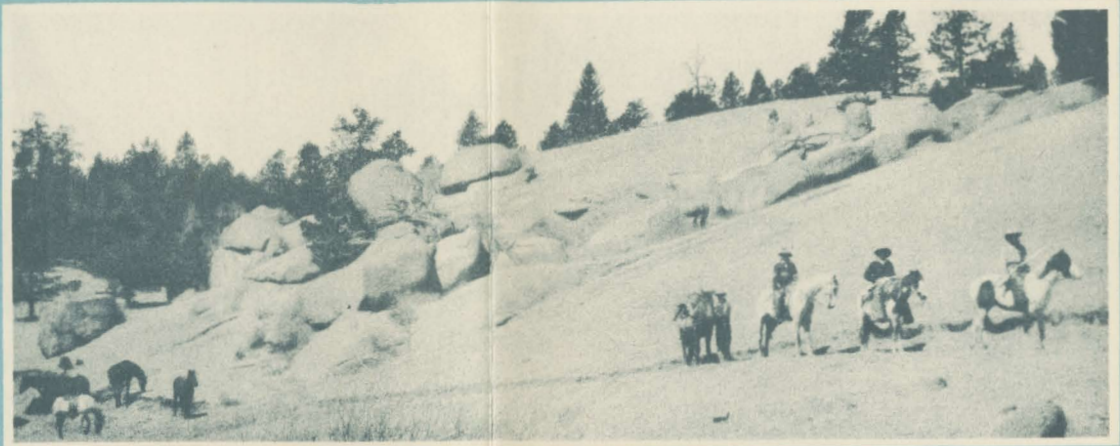
Leaving Chicago, St. Louis, or Memphis any

evening during the summer, you arrive in Colorado Springs the second morning, where room with bath awaits you. The usual Colorado Springs auto trips—to the summit of Pike's Peak and to the Garden of the Gods, Cave of the Winds, South Cheyenne Canyon, Seven Falls—are enjoyed.

Then a trip by rail to Pueblo, where the start for San Isabel National Forest is made. This is a two-day tour, leading through a scenic and historic region—Pine Drive, Squirrel Creek Canyon, Sensation Point, Second Mace, South and North Hardscrabble canyons. Bassic Mine, in which Mark Twain was a stockholder, is passed; also Silvercliff, an abandoned mining town, once so wealthy and important that it came within a few votes of being the capital of Colorado.

On the western boundary of the San Isabel district rises one of the highest and longest uninterrupted mountain ranges in the world—the Sangre de Cristo Range—many of whose high-flung serrated peaks have never been scaled.

Meals and the night's lodging on this trip are enjoyed at neat little mountain inns. On the second day, the route leads along the Sangre de Cristo Range and through many canyons to the rim of Royal Gorge; thence over the Sky Line Drive to



Cañon City for luncheon; and then through Oak Creek Canyon and Florence (with its oil wells) back to Pueblo and room with bath.

Next Denver—a room with bath—an auto tour around the parks and boulevards. And then—the start of the “grand circle” of Rocky Mountain National-Estes Park. When the mountains beyond the town of Loveland are reached some of the most wonderful scenery in all the Rockies is unfolded. The road zigzags through Big Thompson Canyon, between mighty cliffs. In places the car is boxed in on four sides, confining the distant views of its passengers to a single patch of blue sky directly above them. Estes Park Village lies at the head of big Thompson Canyon, and three days are spent at the Chalets here.

On resuming the “grand circle”, the car climbs the eastern slope of the Rockies to cross the Continental Divide over Fall River and Milner passes; then drops down into Kawuneeche Valley and on to Grand Lake. Here, where both water and land sports are afforded, a stop of two days is made. Evenings in the rustic lounge of Grand Lake Lodge are particularly enjoyable.

From Grand Lake, the arc of the “grand circle” curves through high agricultural valleys, passing

several quaint mining towns, the western portal of the famous Moffat Tunnel, and, recrossing the Continental Divide by way of Berthoud Pass, descends the eastern slope to Idaho Springs. Thence, the route to Denver leads past Buffalo Bill's grave and down the Lariat Trail.

On the evening of the thirteenth day the homeward start is made, the train traveling eastward directly from Denver and arriving in Chicago, St. Louis, or Memphis on the fifteenth day.

Tour G

Colorado Springs—San Isabel National Forest—Denver

TIME—TWO WEEKS

	With rail fare	Without rail fare
From Chicago	\$155.00	\$111.95
From St. Louis	146.75	108.95
From Memphis	162.00	111.95

AFTER a short stay at Colorado Springs, during which you visit by auto the Garden of the Gods, Cave of the Winds, South Cheyenne Canyon, Seven Falls, and Broadmoor District, and enjoy a trip to the summit of Pike's Peak, you go by rail to Pueblo. Rooms with bath at both places.

From Pueblo to San Isabel National Forest for a six-days outing at the Flower Garden, a delight-



ful little mountain resort where the stay will be made memorable by the outdoor sports of the daylight hours and the social affairs of the evenings. Not the least of the pleasures to be enjoyed are the motor trips from and to Pueblo—out by way of Wetmore, Kit Carson Rock and Trail, North Hardscrabble Canyon, Brush Hollow, Silvercliff, Westcliffe and along the Sangre de Cristo Range—back through Hillside and down Texas Creek to the Arkansas River—to the top of Royal Gorge—over the marvelous Sky Line Drive—into Cañon City—thence back to Pueblo.

Next, by rail to Denver for a drive through the Colorado capital, including Cheesman and City parks, Zoo, and business and residence districts.

Home directly from Denver.

Tour H

TIME—TWO WEEKS

	A Minimum-Cost Colorado Vacation	
	With rail fare	Without rail fare
From Chicago	\$125.00	\$81.95
From St. Louis	116.75	78.95
From Memphis	132.00	81.95

WHEN two people occupy a lower berth and otherwise “double up”, the cost of this

tour may be reduced to \$114.12 each from Chicago.

You may leave Chicago, St. Louis, or Memphis any evening, enjoy luxurious train service—dining car meals unusually appetizing—and reach Colorado Springs the second morning. A coupon provides for your prompt transfer to Sunnyside Hotel in Manitou, where you live ten days in the shadow of famous old Pike’s Peak. The Sunnyside is a comfortable, homelike establishment, modernly equipped, serving wholesome well-cooked food in abundance—an important consideration, since the keen bracing air whets the appetite.

During your sojourn at the Sunnyside, your coupon-book provides for sight-seeing trips to the summit of Pike’s Peak and to such well-known attractions as the Garden of the Gods, Cave of the Winds, South Cheyenne Canyon, Seven Falls, the Broadmoor District, and other interesting spots in the Colorado Springs-Manitou district.

On the thirteenth day you take the train for Denver, and that afternoon enjoy a delightful motor jaunt through Denver’s Mountain Parks—up Lariat Trail to the summit of Lookout Mountain, stopping at the Buffalo Bill Museum—thence to Evergreen, and down beautiful Bear Creek Canyon to Denver.



And that evening you leave for home, traveling eastward from Denver and arriving in Chicago, St. Louis, or Memphis on the fifteenth day.

Tour K **Ten Days in Cabin at Estes Park Chalets, Sight-seeing Trips: Bear Lake—Fall River and High Drive**

TIME—TWO WEEKS	With rail fare	Without rail fare
From Chicago	\$133.00	\$89.95
From St. Louis	125.75	87.95
From Memphis	141.00	90.95

AT Denver your auto will be waiting to take you over the North St. Vrain Road, through Boulder and Lyons to the Estes Park Chalets. Here, in the heart of the Rockies and one of the principal social centers of the playground region, most of your vacation is spent. Golf, tennis, horseback riding, fishing, and other sports speed the days; and all the evenings in this land where the starry heavens seem to be supported by the grave old mountain peaks, are enlivened by dances and similar entertainments. During your sojourn auto tours will be provided to Bear Lake in the heart of Rocky Mountain National Park; also over the famous High Drive and Fall River Road to Fall River Pass over the Great Continental

Divide—a sensational tour, unsurpassed for its scenic splendors anywhere in the West.

The return to Denver is made over the South St. Vrain Road, skirting the foot of lofty Long's Peak and passing through South St. Vrain Canyon.

Then home—every travel luxury en route.

Tour M **Pike's Peak Region, Denver, Buffalo Bill Museum, Georgetown Loop, Echo Lake**

TIME—SEVEN DAYS	With rail fare	Without rail fare
From Chicago	\$120.00	\$ 76.95
From St. Louis	107.15	69.35
From Memphis	122.40	72.35

A WEEK of sight-seeing, comprehensive and comfortable. Room with bath at both Colorado Springs and Denver.

A day and a half at Colorado Springs enables you to see the nearby attractions—Garden of the Gods, Cave of the Winds, South Cheyenne Canyon, Seven Falls, Broadmoor District—and take a delightful 60-mile motor trip to the summit of Pike's Peak. Denver next—motoring over the boulevards of the city, visiting the parks, the Civic Center, U. S. Mint, Colorado Museum, and the Zoo.



Then, a trip which requires a morning start—through Golden, up Lariat Trail to Lookout Mountain—a stop at Buffalo Bill Museum—through Denver's Mountain Parks to Idaho Springs, and on to Georgetown Loop and Silver Plume. An opportunity to visit the Mendota silver mine. Return is via Idaho Springs and up Chicago Creek to Echo and Summit lakes on Mount Evans Road, thence through Bergen Park, Evergreen, and Bear Creek Canyon.

After a cool restful night, the start for home is made directly from Denver.

Tour N The High Spot Tour—Pike's Peak Region, Royal Gorge, Cripple Creek, Denver, Rocky Mountain National Park

TIME—SEVEN DAYS	With rail fare	Without rail fare
From Chicago	\$134.00	\$ 90.95
From St. Louis	126.50	88.70
From Memphis	141.75	91.70

AT Colorado Springs, your coupon-book provides for room with bath, an auto trip to nearby attractions—Garden of the Gods, Cave of the Winds, South Cheyenne Canyon, Seven Falls,

Broadmoor District—and the 170-mile "big circle" tour which requires a morning start. The "big circle" includes Cañon City, Royal Gorge, Sky Line Drive, thence north through Phantom Canyon to Victor and Cripple Creek, romantic mining centers of the "old days"—returning via Divide, Green Mountain Falls, and Ute Pass. Corley Highway one direction small additional charge.

Rail to Denver the following day and a sight-seeing tour of the city.

Then, the 240-mile "grand circle tour" of Rocky Mountain National-Estes Park. You may take your choice of routes to Estes Park Village—through Longmont, Loveland, and marvelous Big Thompson Canyon; or the South St. Vrain Road through Boulder, Allen's Park, and Long's Peak District.

Beyond Estes Park this enchanting tour includes Fall River Road, Chasm Falls, and Fall River Pass, crosses the Great Continental Divide at Milner Pass, and leads down the western slope of the Rockies past Poudre Lakes and through Kawuneeché Valley to Grand Lake, a source of the Colorado River. Overnight at the Lodge. Back along Fraser River, past the west portal of the Moffat Tunnel, recrossing the Divide at Berthoud Pass, and down Clear Creek Canyon to Idaho

OR VICE VERSA — SAVE TIME VIA ROCK ISLAND



Springs; thence through Denver's Mountain Parks (with a stop to visit the Buffalo Bill Museum), down Lariat Trail, and on to Denver.

Then home—directly from Denver.

Tour Y-1 Pike's Peak Region, Royal Gorge, Salt Lake City, Yellowstone, Minneapolis and St. Paul

TIME—TWO WEEKS	With rail fare	Without rail fare
From Chicago	\$200.00	\$140.65
From St. Louis	205.73	143.78
From Memphis	226.19	150.53

UPON arrival in Colorado Springs, auto tours up Pike's Peak and to the Garden of the Gods, Cave of the Winds, South Cheyenne Canyon, and Seven Falls are provided.

By rail to Salt Lake City—through scenery unsurpassed in America. The train passes through Royal Gorge whose walls are almost a quarter mile high and in places only thirty-five feet apart.

At Salt Lake City, a sight-seeing auto trip to the most interesting places in the city ends in an organ recital on the famous organ of the Mormon Tabernacle. Next, a motor car excursion to Saltair

Beach on Great Salt Lake. Time for a swim—in water so buoyant that it is impossible to sink.

From Salt Lake City by rail to West Yellowstone. From there, a tour of five and a half days through Yellowstone Park—starting on the western boundary and ending at Cody on the eastern boundary. All of Nature's curiosities and scenic splendors are included in this trip—geysers, paint pots, springs, cascades and falls, Yellowstone Lake, Yellowstone Canyon, the colored hot springs terraces, beaver dams, and the various wild animal herds for which the park is a refuge.

On the eleventh day, the park is left behind and the tour is continued to Minneapolis and St. Paul, where a night and the following day are spent. Here a 53-mile trip is made by auto through the business and lake-residence sections of the Twin Cities, various parks, the campus of Minnesota University, and the flour milling district. (If stop-over in Twin Cities is omitted cost of tour may be reduced \$7.50.)

Departure from the Twin Cities for home by evening train the thirteenth day.

Note: For \$31.00 a two-day tour of fascinating San Isabel National Forest can be included.

PERFECT REST ENROUTE — EVERY LUXURY AT HAND



Tour Y-2 Colorado Springs, Salt Lake City, Yellowstone Park, Rocky Mountain National-Estes Park, Denver

TIME—TWO WEEKS

	With rail fare	Without rail fare
From Chicago	\$219.25	\$159.90
From St. Louis	214.25	152.30
From Memphis	230.95	155.30

COLORADO Springs is your first destination. Room with bath at hotel indicated on coupon. After auto trips to the Garden of the Gods, Cave of the Winds, and other attractions, you board the train for Salt Lake City—through famous Royal Gorge.

On arriving at Salt Lake City you are taken for a tour of the parks and boulevards and a visit to Mormon Tabernacle. Later there is a trip to Saltair Beach on Great Salt Lake, where a stop of sufficient length for a swim is made.

Then, by rail to West Yellowstone for a 4½-day circle of Yellowstone Park, including all the attractions and natural curiosities—geysers, paint pots, springs, cascades, falls, Yellowstone Lake, Grand Canyon of the Yellowstone, Obsidian Glass

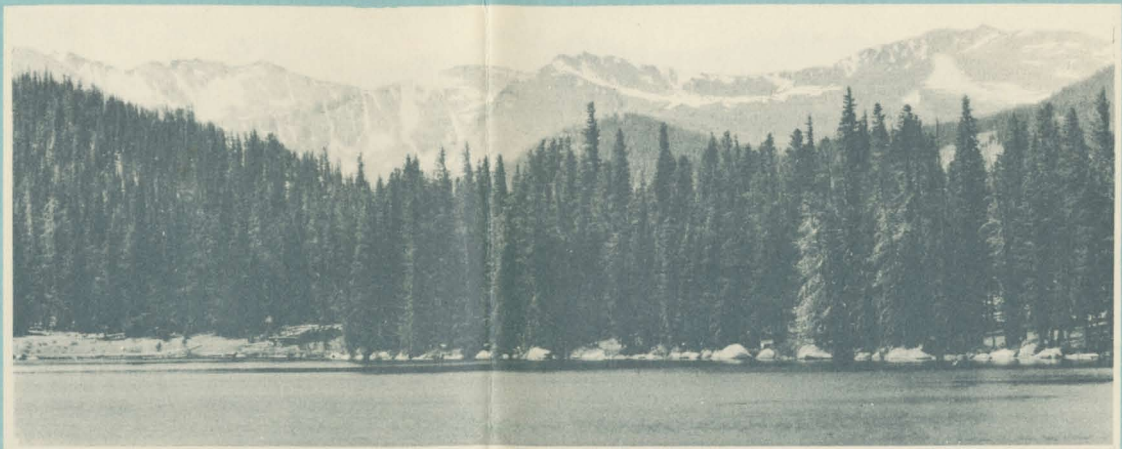
Cliff, Crescent Gulch, and wild animal herds. Board the train again at West Yellowstone for Ogden; visit Ogden Canyon; then, proceed by rail to Greeley, Colorado, and by auto through Big Thompson Canyon to Estes Park at the entrance to Rocky Mountain National Park.

From this village, the trip around the “grand circle” of the park, crossing the Great Continental Divide twice—at Fall River Pass (on the way to Grand Lake) and at Berthoud Pass (on the way to Idaho Springs)—is one of the most spectacular and inspiring in all the world. From Idaho Springs, the route to Denver leads over Lookout Mountain (where a stop is made to visit the Buffalo Bill Museum) in Denver’s Mountain Parks, and down the switchbacks of Lariat Trail.

It would be difficult to select a more comprehensive scenic tour. In all the Rockies there are no higher peaks, no deeper canyons and gorges, no more curious phenomena than the huge Salt Lake, geysers, colored springs, and other sights which are included in this two-weeks outing.

It is not necessary to return to Colorado Springs to begin the homeward trip. The Rock Island connects both cities with the East, and your start

ADDS ZEST TO COLORADO SIGHTSEEING AND SPORT



home may be made directly from Denver.

NOTE: For \$36.30 a two-day tour of fascinating San Isabel National Forest can be included.

Tour Y-3 Rocky Mountain National-Estes Park, Pike's Peak Region, Salt Lake City, Yellowstone Park, Minneapolis-St. Paul

TIME—FIFTEEN DAYS	With rail fare	Without rail fare
From Chicago	\$226.00	\$166.65
From St. Louis	231.98	170.03
From Memphis	252.44	176.78

THIS tour takes you to Denver first, and your initial auto excursion over the mountains is a most spectacular one—round the “grand circle” of Rocky Mountain National-Estes Park. The first leg of the journey stretches up the North St. Vrain road to Estes Park Village, where one night is spent in the cool comfort of the Chalets.

Thence—up—up—up—along the breath-taking Fall River Road, across the Great Continental Divide at Fall River Pass, and down the western slope of the Rockies to beautiful Grand Lake.

After a night at the Lodge, recross the Divide at Berthoud Pass and drop down to Idaho Springs, whence the return trip to Denver leads through Denver's Mountain Parks, over Lookout Mountain (with a stop to visit the Buffalo Bill Museum), and down Lariat Trail—peaks or canyons, crags or gorges, torrential streams or placid lakes all the way.

After a stroll uptown in Denver, board the train for Colorado Springs. Get a room with bath at the hotel indicated on coupon. Enjoy auto visits to the chief attractions—Garden of the Gods, Cave of the Winds, and others, also a trip up Pike's Peak—14,109 feet high—and you are ready to proceed to Salt Lake City—by rail—through mountain scenery of matchless grandeur.

Tour the parks and boulevards of Salt Lake City and visit the Mormon Tabernacle. Then you will find a coupon providing for a trip to Saltair Beach on Great Salt Lake. Try swimming in water that won't let you sink. Return to Salt Lake City through the copper-smelting region and entrain for West Yellowstone. From that point you will make a motor tour of Yellowstone Park, including all the important features—geysers, paint pots,



springs, cascades, falls, lakes, canyons, and wild animal herds—concluding at Cody on the eastern boundary.

From Cody, proceed by rail through Montana, North Dakota, and Minnesota to Minneapolis-St. Paul, where a night and the following day are spent. A 53-mile auto tour here covers the beautiful parks, boulevards, and lake-residence districts. (If stop-over in Twin Cities is omitted cost of tour may be reduced \$7.50.)

From Twin Cities—the final rail trip home.

NOTE: For \$36.30 a two-day tour of fascinating San Isabel National Forest can be included.

Tour Y-4

TIME—TWELVE DAYS

	Colorado—Yellowstone	
	With rail fare	Without rail fare
From Chicago	\$181.50	\$122.15
From St. Louis	186.48	124.53
From Memphis	205.44	129.78

AFTER the comfortable rail trip there is a pleasant stop-over at Colorado Springs—room with

bath and an auto tour to the summit of Pike's Peak.

Proceed by rail through Royal Gorge, over Tennessee Pass, and past Glenwood Springs, amid scenes of inspiring grandeur, to Salt Lake City. A sight-seeing tour of the city, terminating at Mormon Tabernacle. Motor to Saltair Beach on Great Salt Lake—time enough for a swim in that wonderfully buoyant water.

On to Yellowstone for a tour of four and one-half days across Yellowstone Park, visiting all the curious sights and scenes, from geysers to cliffs of black volcanic rock.

Leave the park at Cody, Wyoming, for a trip to Minneapolis-St. Paul, Minnesota, and a day of independent sight-seeing in those cool cities of the northern lake district. (Stop-over in the Twin Cities may be omitted, and passengers, for example, to Chicago may reach home the morning of the twelfth day, with a consequent reduction in cost of \$2.25.)

Home directly from St. Paul.

NOTE: For \$36.30 a two-day tour of fascinating San Isabel National Forest can be included.



Plan your vacation trip on a Rock Island map to any playground in the Scenic West.

GENERAL INFORMATION

Day-by-Day Schedules of Tours

As previously stated, this booklet contains but synopses of the suggested tours. Detailed daily schedules of any or all of them, with information about cost from your home town, will be promptly furnished upon request to D. M. Wootton, Manager, Vacation Travel Service Bureau, Room 714, La Salle Station, Chicago, Illinois, phone Wabash 3200, or to nearest Rock Island representative listed in time table.

Included in Cost of Tour

Cost figures quoted include every necessary expense for entire-trip for a person occupying a lower berth alone—rail and Pullman fare, transfers, meals, lodging, and sight-seeing trips. Only exceptions are: on Tour Y-4—luncheon, sight-seeing, transfer from hotel to station, and for Memphis passengers dinner, in Minneapolis not included; on tours returning from Colorado to St. Louis, dinner at Kansas

City is not included. Where two persons occupy same room at hotels, expense will be reduced.

How to Purchase Tours

Communicate with Rock Island representative indicated in second paragraph above. Designate letter of tour selected; date you desire to leave; full name and address; number in party; how to be roomed at hotel (relationship); Pullman accommodations desired; if any children, give ages and sleeping accommodations required. Upon receipt of this information, reservation will be made and prompt advice given as to amount to remit, with other necessary instructions.

The cost of tour is determined on basis of Pullman accommodations used. For instance, the cost is less if two persons occupy one berth, or if two or more persons occupy compartment or drawing room, than if one person occupies the space.

DIRECT TO BOTH COLORADO SPRINGS AND DENVER

How to Purchase Railroad Ticket

Those living at points north, east, or south of Rock Island Lines gateways (Memphis included) will find it to their advantage, because of the saving in ticket fare, to purchase through summer excursion tickets from their local agents. For example—passenger selecting Tour F, starting from Detroit, should purchase railroad ticket Detroit to Pueblo. The fare will be \$56.70, to which add the cost of complete tour from Chicago without railroad ticket, \$145.45, total \$202.15, for one person in a lower berth. Passenger paying Pullman fare and meals Detroit to Chicago and return.

Routing of Tickets

Tours C, E, H, M, and N: Destination Denver, Colo.—Rock Island Lines to Colorado Springs; Colorado & Southern to Denver; returning Rock Island Lines from Denver.

Tours F & G: Destination Pueblo, Colo.—Rock Island Lines to Colorado Springs; Colorado & Southern to Pueblo; returning Colorado & Southern to Denver; thence Rock Island Lines. Exception: From Texas points route should be Rock Island Lines to Denver; Colorado & Southern to Pueblo; returning same route; and Denver coupon on going trip will be honored into Colorado Springs.

Tour K: Rock Island to Denver, returning same route.

Tours Y-1, Y-3, and Y-4: Destination Yellowstone Park—Rock Island Lines to Colorado Springs (Y-1 and Y-4) or Denver (Y-3); D. & R. G. W. to Ogden; Union Pacific to West Yellowstone; returning from Cody via Burlington to Billings; Northern Pacific to St. Paul; Rock Island or other direct line to starting point. See second paragraph below.

Tour Y-2: Destination Yellowstone Park—Rock Island Lines to Colorado Springs; D. & R. G. W. to Ogden; Union Pacific to West Yellowstone; returning Union Pacific to Denver; Rock Island Lines to Chicago or other gateway.

Yellowstone Park tickets should include coupons for transportation, meals, and lodging for regular 4½-day park trip. Extra day at Canyon on Tour Y-1 covered by coupon in coupon book.

General Optional Arrangements

While these tour plans follow a definite schedule, they are susceptible of changes to meet the individual wish. When such change is desired, correspondence or personal inquiry on the subject is invited.

Several authorized optional arrangements make it possible to change routings shown in tour schedules without additional cost in rail fare, the only increase being for additional meals or for slightly higher Pullman fares. For example—passengers between Chicago and Colorado may travel either through Omaha or Kansas City, the only increase for routing via Kansas City being for additional meals; and stop-overs are permitted anywhere en route.

A passenger desiring to remain at a particular place beyond the limit provided in Colorado tour schedule, can make arrangements at time of booking or by conferring with Rock

Island representative in Colorado Springs or Denver.

If a patron, after reaching Yellowstone Park, should decide to remain there for a longer period than schedule provides, he should arrange with local transportation people to change Pullman reservation from West Yellowstone to Greeley or from Cody to Minneapolis; also telegraph D. M. Wootton, Room 714, La Salle Station, Chicago, Ill., for protection of other reservations, being sure to indicate where confirming wire should be sent. Upon arrival at Denver or Minneapolis, Rock Island representative will correct Pullman tickets.

Sight-seeing Trips » Independent Colorado Tours

Sight-seeing trips may be taken as indicated in the itineraries or at individual convenience at various places.

Hotel Accommodations

Rates cover room with bath at Colorado Springs, Denver, Pueblo and Minneapolis, but bath is not included at other places. Privilege of floor bath is accorded our patrons. If private bath is desired for complete tour, the additional charge will be quoted on application.

Baggage Arrangements

A substantial suit case or bag should hold enough clothing for the trip. The free allowance of baggage carried on motor cars in national parks is limited to twenty-five pounds. This, however, does not include a small overnight bag which passenger may carry in hand.

For passengers destined to Estes or Rocky Mountain National Park, trunks will be stored without charge at Denver. If necessary to have trunk in park, arrangements can be made for transfer at individual expense; minimum charge, \$1.25 for each transfer.

Apparel Suggestions

As evenings are cool in the mountains, take top coat, sweater, or wrap. A stout pair of shoes and knickers for general wear and hiking will add to one's comfort. Formal evening attire unnecessary. Take camera and sun glasses.

Children

Cost for children under twelve years will be based on accommodations desired, and will be given on application. Children over twelve years of age will be charged full rates.

Communicating With Tours En Route

Letters and telegrams should be addressed to the individual at hotels or lodges shown in daily schedule of tour selected. Extra copies of the schedules for the folk at home will be furnished upon request.

Special Party Arrangements

For organizations which may contemplate arranging special car or train parties to conventions, etc., the facilities of the Vacation Travel Service Bureau are available. We shall be pleased to tell you about our plan.

D. M. Wootton, Manager, Vacation Travel Service Bureau, Rock Island Lines, Room 714 La Salle Station, Chicago, Ill.



Something New
in
Summer Outings
1932

Rock
Island