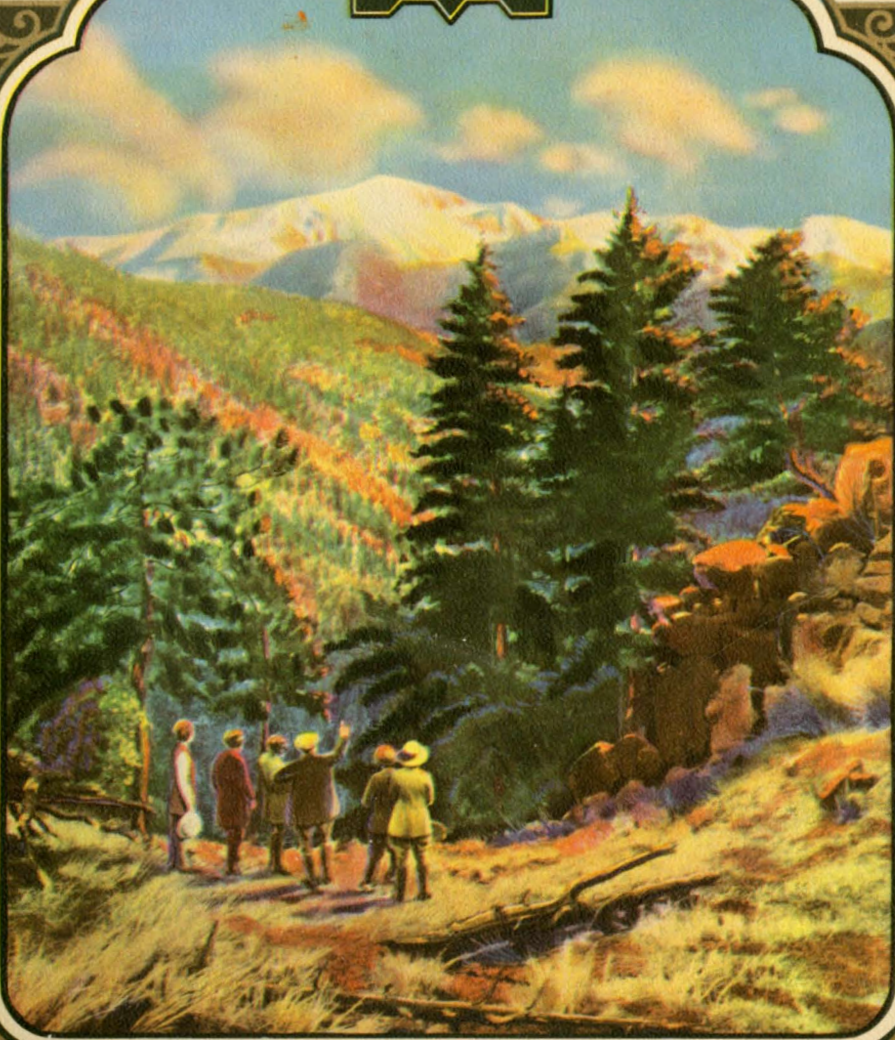


**Rock  
Island**

**G. D. GARVEY**  
**D. P. A., ROCK ISLAND LINES**  
**903 MAJESTIC BLDG.**  
**MILWAUKEE, WIS.**



**Personally Conducted *and*  
Independent All-Expense  
TOURS TO COLORADO**

1929







Personally Conducted  
*and* Independent  
All-Expense  
TOURS  
*to Colorado*



ROCK ISLAND VACATION TRAVEL SERVICE BUREAU  
714 LA SALLE STREET STATION CHICAGO







*The  
Big Thompson  
River and Canyon*





## A Saga of the Summertime

WHERE other nations, as a matter of course, lock desk and workshop for frequent holidays and rebuild their bodies with rest and recreations, America, until recently, with all her facilities for joy and relaxation, has kept her people constantly "on the job" and made them believe they liked it!

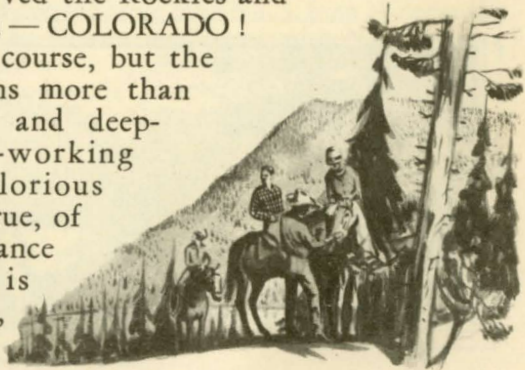
But the younger generation of today, with its buoyant spirits and its love of life, has demanded—and wrought—a change in the old philosophy of "all work and no play". The regular vacation has come to stay and has demonstrated its value.

Even "father," known the world over as "indulgent husband" and "business slave," is learning a new lesson from those who come trooping home, glowing and refreshed, and eventually he, too, decides to drop care for awhile, to "run away" as he longed to do in his boyhood days and find adventure in the rebuilding of his life forces.

But always, to young and to old, comes the great question of "WHERE?" Not too far—not too near—somewhere that will provide interest, recreation, change. Change of altitude, scenery, habits, sensations—what is the answer? There may be several, BUT—when good old Dame Nature apportioned the scenic beauties of her new-born world she awarded an outstanding wonder-section to each great division.

But for America she reserved the Rockies and the Rockies today mean—COLORADO!

Beauty is everywhere, of course, but the beauty of Colorado means more than just snow-capped peaks and deep-hewn gorges,—to hard-working Americans it brings glorious visions of dreams-come-true, of youth renewed, of romance found. For Colorado is Vacation Land idealized, it is Rainbow's End.





## Zestful, Restful Colorado Tours

**N**OT all may linger indefinitely among the towering ranges and peaceful valleys, for the average furlough of the great Industrial Army is a brief two weeks. But Colorado is well named "the carefree," as transportation experts and western hospitality have combined to show the visitor the most of this great wonderland with—if necessary—the smallest outlay of time and money.

And it is this combination that makes it possible for one to step on a Rock Island train, travel to Colorado in the most comfortable way, see the principal points of interest, stop at the best hotels, ride in the finest motor cars, eat the best meals, take the most enthralling trips, and step off again in one's home town without ever having had to think of reservations, of hotels, of meals, sightseeing trips, taxis, or trains—or whether one's traveler's checks would last or not!

The unusual and unsparing attention to details with which these tours have been planned, particularly the happy combination of sightseeing and rest periods; the personal and skillful supervision; the complete relief from all responsibility; the absence of the trials of ordinary travel pledge to each member an ideal and carefree summer holiday.

These tours are available at actual cost, on a carefully arranged schedule providing first-class accommodations throughout, with all essential items of expense specified and paid for before the trip begins.



*Idling in Colorado*



# Dates and Schedules

## *Personally-Conducted All-Expense-Plan Colorado Tours Season 1929*

**T**OURS will leave Chicago, St. Louis, Memphis, St. Paul, Minneapolis, Dallas, and Fort Worth on Saturday, June 29th, July 6th, 13th, 20th, 27th; August 3rd, 10th, 17th, 24th, and 31st; and from Des Moines, Omaha, St. Joseph, and Kansas City on day following, Sunday—a two-weeks' vacation—giving ten full days in Colorado.

### SATURDAY

*From Chicago*—Leave Chicago (La Salle Street Station) via Rock Island Lines, 11:30 Central Time. Train carries through observation car.

*From Minneapolis*—Leave Minneapolis (Rock Island Station) via Rock Island Lines, 10:20 P.M. Central Time.

*From St. Paul*—Leave St. Paul (Union Station) via Rock Island Lines, 11:00 P.M. Central Time.

*From St. Louis*—Leave St. Louis (Union Station) via Rock Island Lines, 11:15 P.M. Central Time.

*From Memphis*—Leave Memphis (Grand Central Station) via Frisco Lines, 7:45 P.M. Central Time.

*From Dallas*—Leave Dallas via Rock Island Lines, 9:15 P.M. Central Time.

*From Ft. Worth*—Leave Fort Worth via Rock Island Lines, 10:40 P.M. Central Time.

### SUNDAY

*From Des Moines*—Leave Des Moines via Rock Island Lines, 8:10 A.M. Central Time.

*From Omaha*—Leave Omaha (Union Station) via Rock Island Lines, 1:35 P.M. Central Time.

*From St. Joseph*—Leave St. Joseph 7:45 A.M. Central Time.

*From Kansas City*—Leave Kansas City (Union Station) via Rock Island Lines, 11:00 A.M. Central Time.

Breakfast, luncheon, and dinner provided in dining car, except that passengers from St. Louis will be served breakfast in the Union Station Restaurant at Kansas City on westbound trip.

The foregoing schedules contemplate passengers from Chicago, Des Moines, Omaha, and intermediate points using train No. 5; from Minneapolis and St. Paul, train No. 32 to Des Moines, connecting with No. 5 leaving there at 8:10 A.M. Central Time.

Passengers from St. Louis, Memphis, St. Joseph, and intermediate points will use train No. 25 leaving Kansas City 11:00 A.M. Central Time.

Passengers from Dallas and Fort Worth and points north will use train No. 18 to McFarland, connecting there with train No. 25, leaving 2:10 P.M. Central Time.

At Belleville, Kansas, or Limon, Colorado, sleeping cars containing tour members from Memphis, St. Louis, Kansas City, St. Joseph, Dallas, and Fort Worth, will consolidate with sleeping cars containing tour members from Chicago, Minneapolis, St. Paul, Des Moines, and Omaha, in order that all may arrive at Denver at the same time.

# Itinerary

**Sunday**—There is always a satisfying thrill—especially in the growing season—in crossing the great food producing states. In an amazingly short time—historically speaking—Iowa, Nebraska, and Kansas have emerged from pioneer days—interesting but lean!—into a modern agricultural district of great wealth and future promise. To the interested traveler Sunday is all too short for the ride through this vivid district.

**Monday**—Denver—the Gateway to Vacation Land—is reached at 7:25 A.M., and from the Union Station the party is taken through the Welcome Arch to the Brown Palace Hotel, where rooms with bath and all meals for the day are provided.

At 10:00 o'clock a sightseeing trip through Denver's business, residence and park sections is provided, returning in time for lunch.

The afternoon and evening are left open so that each one may be free to meet friends or fill the time as suits him best.

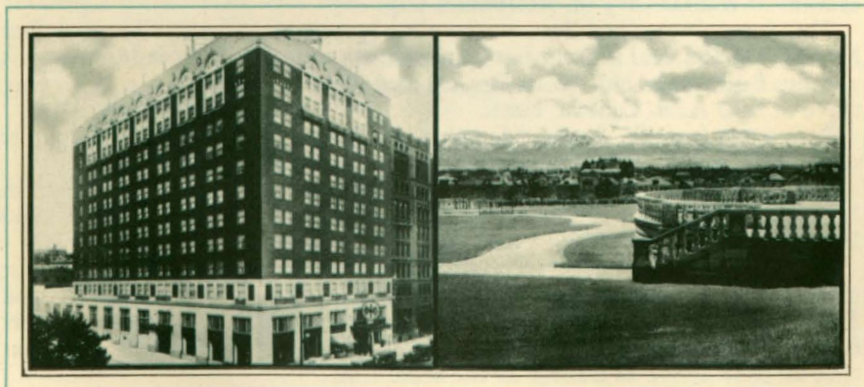
**Tuesday**—After breakfast at the Brown Palace, the party leaves the hotel at 7:45 in the comfortable motor cars of the Rocky Mountain Parks Transportation Company bound for Rocky Mountain National-Estes Park, seventy-five miles to the northwest, going via Longmont, Loveland and beautiful Big Thompson Canyon, which is twenty-three miles long and one thousand feet deep in places.

Estes Park Chalets is reached at 12:00 noon where room and meals are provided until Saturday morning.

The afternoon is a fine time for rest or a short hike, and in the evening there is community singing and dancing.

**Wednesday**—Situated as it is in a great National Park, the Chalets is a delightful headquarters for sightseeing excursions. Saddle horses are available at low rates for those who ride, and motors may be ordered for longer trips if desired. Box lunches are provided for those planning to go far afield.

In the evening there is entertainment in Social Hall.



Cosmopolitan Hotel, Denver, Colo.

A view of the Front Range



**Thursday**—For the day there is no set program except for hiking trips over Lily Mountain and Sheep Rock Trail.

In the evening a Beefsteak Barbecue is provided followed by a Campfire Party and community singing.

**Friday**—The highlight of this day is a motor trip to beautiful Bear Lake, located high among the snowy peaks that it reflects. After the return from Bear, dinner, dancing and community singing complete the day.

**Saturday**—After breakfast at the Chalets autos take the party through lovely Horseshoe Park and over the world famous Fall River Road, which winds its way upward over the main range of the Rockies, which it crosses by means of Fall River and Milner passes.

Over on the western side of the range, still within Rocky Mountain National Park, looking down on beautiful Grand Lake, two miles away, nestling among its cliffs and peaks is Grand Lake Lodge.

Luncheon, dinner and room are provided at Grand Lake Lodge, and in the evening there is music and a lecture on "Wild Life in the Rocky Mountains".

**Sunday**—At Grand Lake Lodge — all meals and room provided. Churches of various denominations are at the village, within a short distance, by either trail or motor, of the Lodge.

A variety of out-door activities—boating, bathing, fishing, hiking or horse-back riding—may be indulged in.

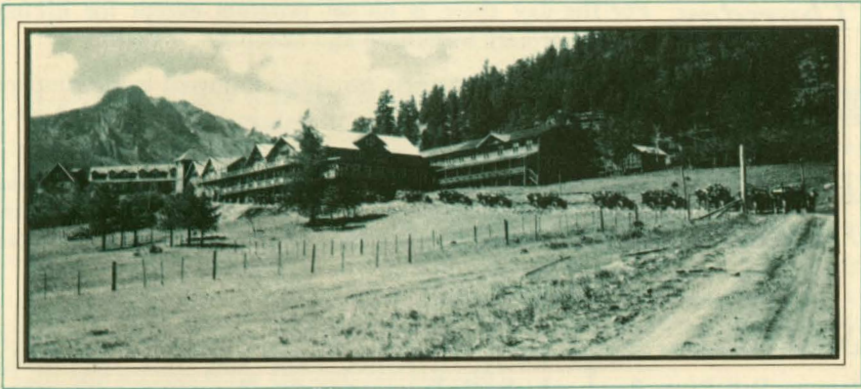
For the evening there is no set program, but the huge open fire in the rustic lounge of the Lodge is always a center of attraction.

**Monday**—Breakfast at Grand Lake Lodge is followed by an 8 A. M. start for the return trip to Denver by motor, which takes one along the Frazer River, through the "Mountain Iceberg" lettuce district, past the west portal of the famous Moffat Tunnel, over the range



Sunken Gardens, Denver,  
showing the West Denver High School

Brown Palace Hotel, Denver



*The Chalets, Estes Park*

via Berthoud Pass, and into Idaho Springs at noon. Lunch is provided at the Placer Inn, and there's a little time for rest and exploration of this little town of hot springs and rich mines. At 1:30 P.M. the ride is resumed through the marvelous scenery of the eastern slope.

The way leads into Denver's Mountain Parks by way of Chicago Creek and Echo Lake, along the shoulder of Mount Evans, thence downward to Look-out Mountain, where a stop is made at the grave of Buffalo Bill (Colonel Cody), and at Pahaska Tepee, the Museum of Cody's souvenirs. Then the road leads down the famous Lariat Trail and through the little town of Golden, which was the first capital of the state and is now the seat of the Colorado School of Mines.

The Cosmopolitan Hotel in Denver is reached at 5 P. M. where dinner and rooms with bath are provided.

The evening is left free so each may visit the theatre or movies as desired.

**Tuesday**—After breakfast at the Cosmopolitan the party leaves the hotel, by automobile, for Colorado Springs, a seventy-five mile trip to the south along the foothills of the Front Range, arriving at the Broadmoor Hotel, in the beautiful Country Club district of Colorado Springs, at 11:30 A.M.

Rooms and meals provided here for the stay at Colorado Springs.

At 2:00 P.M. the hotel is left for a motor trip through Garden of the Gods, up to Cave of the Winds, then to South Cheyenne Canyon, Seven Falls, and other interesting points in this vicinity.

In the evening there is dancing in the ballroom, and guests will also be interested in the different attractions offered by the Broadmoor—the Little Theater, the swimming pool, the shops, and the beautiful grounds which surround the hotel.

**Wednesday**—After breakfast at the Broadmoor, cars leave the hotel at 8:30 for the summit of Pike's Peak, a trip which consumes about five hours.





The Lounge—Grand Lake Lodge

For the afternoon and early evening there is no set program, but golf, tennis, boating, and bathing may be enjoyed at the Broadmoor.

Motor cars leave the Broadmoor at 10:00 P.M. for the station, from which the train leaves at 11:00 P.M. over the Rock Island Lines, eastward bound.

NOTE: Members of party returning to Kansas City, St. Joseph, St. Louis, Memphis, Dallas, and Fort Worth will have early dinner and leave from Colorado Springs at 7:00 P. M.

**Thursday**—As the train speeds east on its homeward way, one may rest, relax, and compare experiences with friends made during the trip.

All meals provided in dining car.

Arrive Kansas City via Rock Island Lines (Union Station) 11:45 A.M. Central Time.

\*Arrive St. Joseph 8:25 P.M. Central Time.

Arrive Omaha via Rock Island Lines (Union Station), 3:10 P.M. Central Time.

Arrive Des Moines via Rock Island Lines, 8:25 P.M. Central Time.

\*Note: Those returning to St. Joseph will be furnished breakfast only.

**Friday**—Arrive St. Paul via Rock Island Lines (Union Station), 7:15 A.M. Central Time.

Arrive Minneapolis via Rock Island Lines (Rock Island Station), 8:00 A.M. Central Time.

Arrive Memphis via Frisco Lines (Grand Central Station), 8:00 A.M. Central Time.

Arrive St. Louis via Rock Island Lines (Union Station), 7:38 A.M. Central Time.

Arrive Fort Worth via Rock Island Lines, 6:25 A.M. Central Time.

Arrive Dallas via Rock Island Lines, 7:50 A.M. Central Time.

Arrive Chicago via Rock Island Lines (LaSalle Street Station), 6:59 A.M. Central Time.

*Home again! New friends say goodbye, old friends are greeted — and "Vacation 1929" has become a delightful experience, a happy memory.*

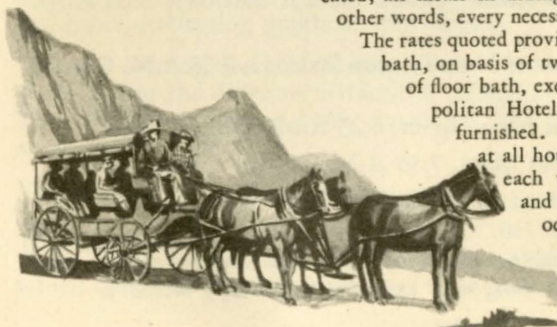
## Cost of Tours

FROM		WITHOUT RAILROAD TICKET	WITH RAILROAD TICKET
Chicago	1 person occupying lower berth	<b>\$134.95</b>	<b>\$178.00</b>
	2 persons occupying lower berth	124.07 each	167.12 each
	1 person occupying upper berth	130.59	173.64
St. Louis	1 person occupying lower berth	133.45	171.25
	2 persons occupying lower berth	123.32 each	161.12 each
	1 person occupying upper berth	129.39	167.19
Des Moines	1 person occupying lower berth	129.69	159.79
	2 persons occupying lower berth	121.44 each	151.54 each
	1 person occupying upper berth	126.39	156.49
Minneapolis and St. Paul	1 person occupying lower berth	133.45	178.10
	2 persons occupying lower berth	123.32 each	167.97 each
	1 person occupying upper berth	129.39	174.04
Omaha	1 person occupying lower berth	121.95	149.80
	2 persons occupying lower berth	115.57 each	143.42 each
	1 person occupying upper berth	119.39	147.24
Kansas City	1 person occupying lower berth	121.95	149.80
	2 persons occupying lower berth	115.57 each	143.42 each
	1 person occupying upper berth	119.39	147.24
St. Joseph	1 person occupying lower berth	121.95	149.80
	2 persons occupying lower berth	115.57 each	143.42 each
	1 person occupying upper berth	119.39	147.24
Memphis via Frisco Lines to Kansas City	1 person occupying lower berth	134.95	185.00
	2 persons occupying lower berth	124.07 each	174.12 each
	1 person occupying upper berth	130.59	180.64
Dallas	1 person occupying lower berth	130.44	172.44
	2 persons occupying lower berth	121.81 each	163.82 each
	1 person occupying upper berth	126.99	168.99
Fort Worth	1 person occupying lower berth	130.44	172.44
	2 persons occupying lower berth	121.81 each	163.82 each
	1 person occupying upper berth	126.99	168.99

## What Is Included in Cost of Tour

Railroad and Pullman transportation for the round trip; sight-seeing trips enumerated; automobile transportation where indicated; all meals in dining cars and hotels; transfers, etc.; in other words, every necessary expense is covered.

The rates quoted provide for room at hotels without private bath, on basis of two persons to a room, but include use of floor bath, except at the Brown Palace and Cosmopolitan Hotels in Denver, where private bath is furnished. Rooms with private bath may be had at all hotels upon payment of \$8.00 additional each where two persons occupy a room, and \$16.00 additional when one person occupies a room alone. Single room, if available, at all hotels, on regular Tour plan will be \$5.00 additional. Only first-class hotels are selected.







## Features of the Front Range

### Denver

Denver—Gateway to all the Scenic West—is the connecting link between plains and mountains, and has grown from a gold camp of pioneer days to a beautiful modern city covering more than seventy-five square miles.

It is especially attractive to visitors because of the luxuriant and vivid green of its trees and lawns, even though every blade of grass must be irrigated; for the beauty of its many parks and playgrounds; for its cleanliness and brilliant illumination; for its fine schools and universities. One of its most unusual civic accomplishments was the acquisition of thousands of acres in the mountains, known as Denver's Mountain Parks, which are to be kept in their state of primitive beauty for all time. Broad motor roads to and through this section are built and maintained by the city

### Rocky Mountain National-Estes Park

Rocky Mountain National Park, seventy-five miles northwest of Denver, was carved by the government out of the vast district formerly known as Estes Park, and it lies like a great scenic blanket over the main range of the Rockies, from which it takes its name.

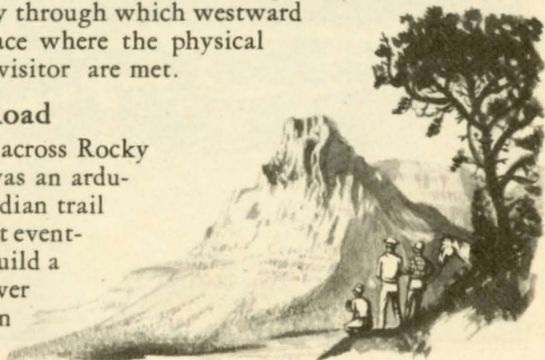
Although it covers but four hundred square miles it embodies some of the most beautifully rugged scenery in the United States, with astounding contrasts of lofty peaks and deep gorges.

Long's Peak, 14,255 feet high, which dominates the surrounding country with its snowy crown and sheer precipice, is one of the highest of the Rocky Mountain cones.

Estes Park Village lies several miles east of the park itself, but it is the gateway through which westward traffic flows and is the place where the physical needs of both resident and visitor are met.

### Fall River Road

Formerly the only route across Rocky Mountain National Park was an arduous—though beautiful—Indian trail over Flatop Mountain. But eventually the state decided to build a great motor highway up over the range, and more than ten years were spent in the effort.





*On the Fall River Road*



*On Grand Lake*



Now this marvelous highway follows Fall River upward through its beautiful gorges and canyons, skirts the shoulders of obstructive peaks, and crosses the Continental Divide by means of Milner and Fall River passes.

The downward trip on the western side is equally beautiful and brings one into a lush valley between the main range and the Never-Summer Range.

### Grand Lake

Here on the western edge of Rocky Mountain National Park, Grand Lake nestles among its peaks and hills like a turquoise in a rustic setting. It is one of the largest and most beautiful bodies of water in Colorado, and is bordered by a quaint village and a variety of comfortable hotels that harmonize with their surroundings.

Here is a delightful shelving shingle for beach bathing; here are waters filled with the gamy, pink-fleshed salmon trout; here the Rocky Mountain Yacht Club stages its annual regatta; and here is the main source of the great Colorado River, which sings its way in mountain innocence out of the placid lake, only to become, a thousand miles further on, the roaring water-giant of the Southwest.

From Grand Lake the journey Denver-ward takes one south and into the mountains once more, past the yawning portal of the Moffat Tunnel, and then up over the Continental Divide again, through Berthoud Pass, guarded by its extinct volcano, and down on the eastern side through a succession of canyons, valleys, and mining camps, into Idaho Springs.

### Idaho Springs

This delightful little city is a center of attraction both summer and winter; its hot, radio-active springs have been noted for decades, and it is the heart of a rich mining district.

### Mount Evans and Echo Lake

Southward from Idaho Springs lies Mount Evans, 14,260 feet high, a Titan of the Rockies, and one of the outstanding features of Denver's Mountain Parks. A broad motor road leading to its summit is nearing the top, and this, when completed, will be the highest roadway in America.

This district is reached by an all-day "circle trip" out of Denver; or those returning from Rocky Mountain National Park may detour at Idaho Springs over the exquisitely beautiful road that follows Chicago Creek until it joins the Denver-Mount Evans Highway on Squaw Mountain.

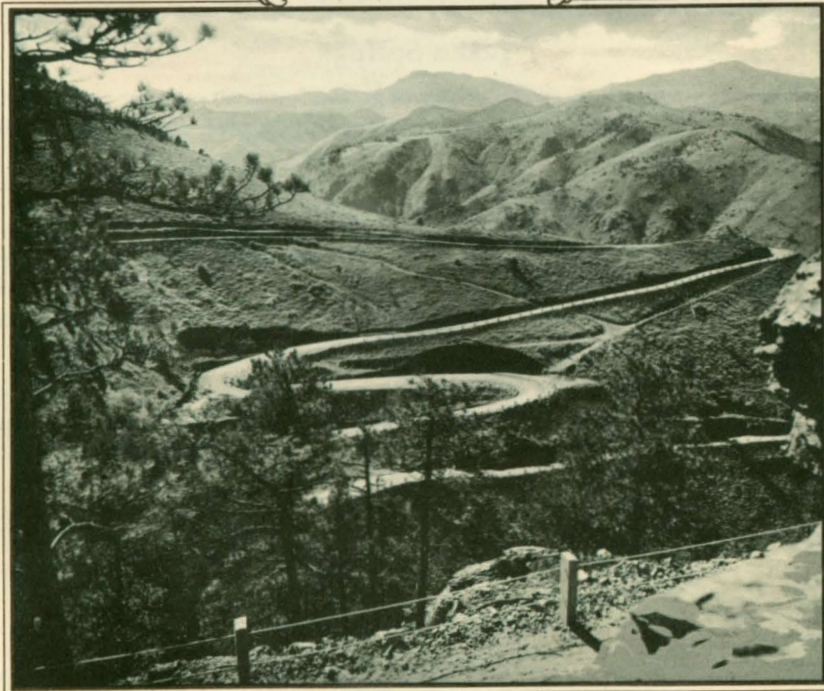
Echo Lake, far up on the shoulder of Mount Evans, is the center of a beauty spot that has drawn thousands to it for summer enjoyment.

### Pike's Peak Region

Best-beloved of all the western peaks, the hoary-headed "Sentinel of the Plains" keeps eternal vigil over the great district that bears his name.



*On the Trail*



*Lariat Trail*



There are numberless ways of seeing and enjoying this section, but all of them circle and center around stately, symmetrical Pike, 14,109 feet high.

Colorado Springs, with its wide streets and fine hotels, lies out on the plains, but with the mountains and the great Peak rising just beyond, it is the base and starting point for innumerable sightseeing trips whether one's taste demands motoring, hiking, or riding.

Manitou, in reality a suburb of Colorado Springs, is but a few miles away, at the very foot of Pike's Peak. Its mineral springs are world-famous, there are many delightful hotels, and its Indian Legends make it a place of especial interest.

Over this entire district, in every direction, broad, winding motor roads lead to points of interest, among the most notable being that which leads by numberless and thrilling switchbacks to the summit of Pike's Peak.

Another winds through Williams Canyon and up a mountain wall to the Cave of the Winds, and still others lead up the rocky side of Cheyenne (Dragon) Mountain, and over the Corley Highway to Cripple Creek.

The Garden of the Gods, fantastically-eroded outcropping of red sandstone, South Cheyenne Canyon, the graceful, leaping cascades of Seven Falls, the High Drive, North Cheyenne Canyon, and Bear Creek Canyon are only a few of the well-known attractions, while many others keep the visitor enthralled throughout his stay.

*And so, wherever one goes in Colorado, there is no lack of beauty, of interest, of infinite variety. And whether one stay in fine hotel or rustic camp, whether one keep constantly active or rest and breathe deeply of beauty and clean air, it is still the Land of Dreams-Come-True, of Rainbow's End.*



Broadmoor Hotel, Colorado Springs

# How to Obtain Membership in Tours

**W**RITE or telegraph D. M. Wootton, Manager Vacation Travel Service Bureau, Rock Island Lines, Room 714 La Salle Street Station, Chicago, Illinois, or the nearest Rock Island representative as shown on page 40, indicating whether it is your intention to take the personally conducted or one of the independent tours. Give date on which you desire to leave if taking independent tour, indicating whether C or D, etc. Full name and address should be given, number in party, how to be roomed at hotel (relationship); Pullman accommodations desired; and if any children, give ages.

Upon receipt of this information, reservation will be made and prompt advice given as to the amount to remit, with such other instructions as may be necessary.

The cost of tour is determined on basis of Pullman accommodations used. For instance, the cost is less if two persons occupy one berth, or if two or more persons occupy one compartment or drawing room. Prices quoted are for lower and upper berths. Cost for section, compartment, or drawing room accommodations will depend upon number of occupants and will be quoted upon application.

## How to Purchase Railroad Ticket

Those living at points north, east, or south of gateways from which rates for tours are quoted, will find it to their advantage, because of the saving in ticket fare, to purchase through Summer excursion tickets from their local agent. For example—passenger selecting Tour F, starting from Cleveland, should purchase railroad ticket Cleveland to Pueblo, via Rock Island Lines, Chicago to Colorado Springs, D. & R. G. W. R. R. to destination, returning D. & R. G. W. R. R. to Denver, Rock Island Lines to Chicago. The fare will be \$62.70, to which add the cost of complete tour from Chicago without railroad ticket, \$156.95, total \$219.65. Passenger paying own Pullman fare from Cleveland to Chicago and return.

## Destination of Railroad Tickets

On personally conducted tours, Denver should be destination of ticket, return coupon from Denver will be honored from Colorado Springs. On independent tours, information as to destination of ticket follows cost of tour.

## Baggage Arrangements

On all tours ordinary hand baggage will be carried free. Trunks can be checked to Pueblo, Colorado Springs, or Denver. If wanted at hotel, transfer will be at individual expense, except on Tour D, one trunk for each passenger transferred without charge to and from hotel at Colorado Springs and Denver.

For passengers destined to Estes or Rocky Mountain National Park, trunks will be stored without charge at Denver. If necessary to have trunk in Park, arrangement can be made with Rocky Mountain Parks Transportation Company for transfer at individual expense. Minimum charge \$1.25.

Special form of baggage tag provided for each tour.

## Apparel Suggestions

As evenings are always cool in Colorado, a top-coat, sweater, or wrap should be carried. A stout pair of shoes and knickers, for general wear and hiking, will add to one's comfort. For those who find the sun's rays annoying, a pair of colored eye-glasses will be helpful.



### Optional Hotel Arrangements

Arrangements for independent tours C, E, F, G and H do not provide for use of the following hotels—Broadmoor, Acacia, or Antlers at Colorado Springs; Brown Palace and Cosmopolitan at Denver; Stanley and Lewiston at Estes Park, except upon payment of additional charges.

### Children

Cost for children under twelve years of age will be based on hotel accommodations desired, and will be given on application. Children over twelve years of age will be charged full rates.

### Communicating With Tours En route

Letters and telegrams should be addressed to the individual at any of the hotels or lodges selected; allowing sufficient time for transit.

### What Others Have Experienced

We have on file and available for reference, letters from many who have experienced the delights of the personally conducted or independent tours.

### Sightseeing Trips—Independent Tours

Sightseeing trips may be taken as indicated in the itineraries or at individual convenience within the period designated at the several points.

### Optional Routes—Independent Tours

Passengers desiring to return via Kansas City and St. Louis to Chicago, where such route is authorized by tariff, can do so upon payment of Pullman accommodations and necessary meals, between St. Louis and Chicago. Stop-overs are permitted at any point on railroad ticket within final return limit, which is October 31st.

### Special Party Arrangements

For organizations which may contemplate arranging special cars or train parties to conventions or for sightseeing trips on the all-expense-plan basis or otherwise, the facilities of the Rock Island Lines Vacation Travel Service Bureau are available. We shall be pleased to tell you all about our plan.

### Independent Tour Passengers

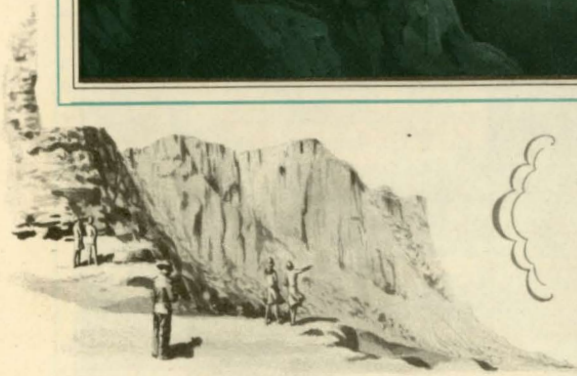
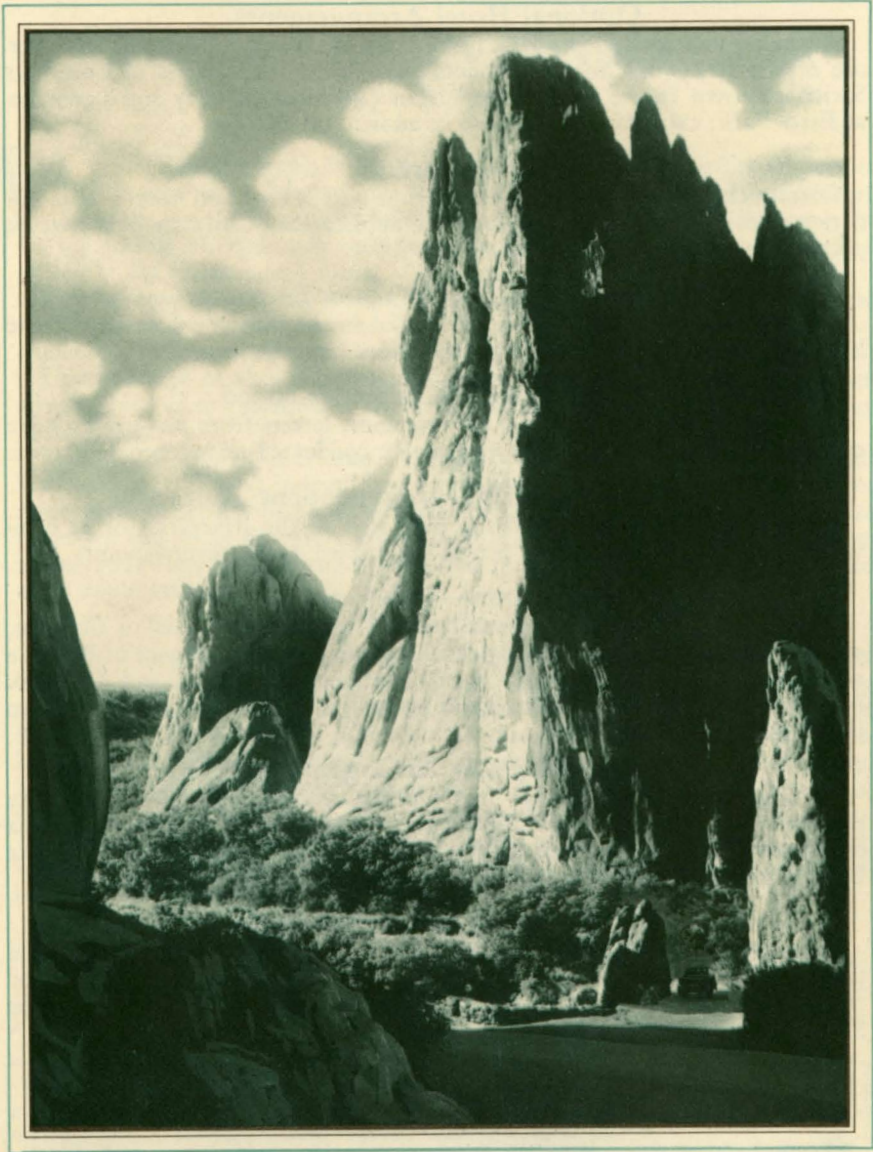
Independent tour passengers returning to Kansas City, St. Louis, and points in the South East and South West, will leave Denver on Rock Island train No. 40 at 6:00 P. M. and have dinner in dining car instead of Union Station Restaurant or hotel.



*Buffalo in Denver's Mountain Parks*



*Motor Car used in Rocky Mountain National Park*



*In the  
Garden  
of Gods*





## INDEPENDENT Go-As-You-Please, All-Expense-Plan COLORADO TOURS

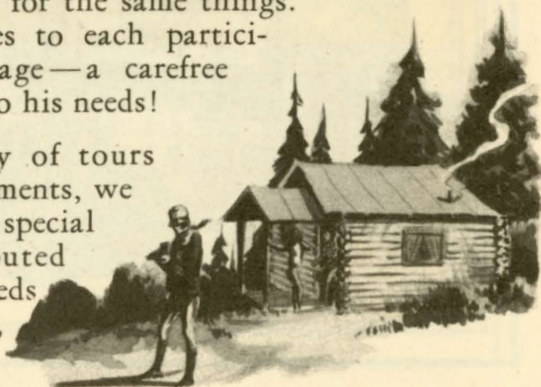
**I**DEAL as the Conducted Tour is for most people, it is not possible for every one to conform to a regular schedule. For those who cannot, the following individual tours have been prepared to cover the finest of the Front Range scenery.

These tours are diversified as to routing and cost, and are so arranged that one may leave any day during the summer, take the scenic trips at the time most convenient, and have definite knowledge beforehand of what the expense will be.

The coupon books furnished cover all features of the tour selected, and if a longer stay at any point is desired, it can be arranged through the nearest passenger representative of the Rock Island Lines, who will protect reservations at subsequent stops. Such additional time will be at individual expense and at proportionate rates.

All of these plans assure one of comfortable hotel accommodations and the best of the sightseeing trips, and eliminate travel worry—while the cost is considerably less than an individual would pay for the same things. More than that, it gives to each participant his rightful heritage—a carefree vacation exactly suited to his needs!

As even this variety of tours may not meet all requirements, we will be glad to prepare special schedules, with computed costs, to fit individual needs regarding time, expense, and places visited.



Some of the  
interesting  
features  
seen on the  
Rock Island  
Tours



Sentinel of the Plains



Timberline Cabin



Pike's Peak Highway

Portal  
of Moffat  
Tunnel



Antlers Hotel



Royal

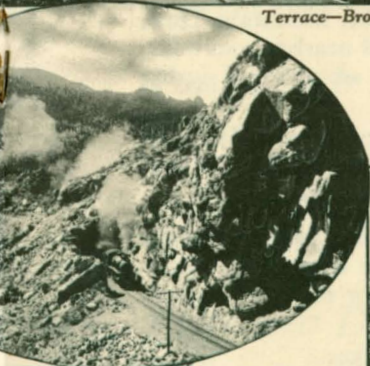




Terrace—Broadmoor Hotel



Children's Beach, Grand Lake



Gorge



Sunnyside Hotel, Manitou



Bear Lake



Monument at Idaho Springs

## Tour C

### FROM CHICAGO

*First Day*—Leave via Rock Island Lines (La Salle Street Station) any convenient day of the week at 11:30 P.M. Central Time. The carefree hour for starting!

*Second Day*—En route through Iowa, Nebraska, and Kansas—visualizing the food supply of America in three great agricultural and stock-raising states.

Breakfast, luncheon, and dinner provided in dining car.

*Third Day*—Arrive Colorado Springs 7:30 A.M. Mountain Time. Breathe the cool, refreshing air of nearby mountains.

Transfer to hotel where room with bath and all meals are provided during stay in Colorado Springs.

In the afternoon the "little circle" sightseeing trip is provided—Garden of the Gods, Cave of the Winds, South Cheyenne Canyon, Seven Falls, Broadmoor, and other interesting points. Tolls and admissions included.

*Fourth Day*—After an early breakfast, an 8:30 trip to the summit of Pike's Peak is provided, the routing being optional. One may either go and return the same way, or may go one way by automobile and the other by Cog Road.

The afternoon and evening are left free to do as one likes.

*Fifth Day*—After breakfast at the hotel, transfer to the station is provided. One leaves Colorado Springs, via the Colorado & Southern Railroad at 9:10 A.M. Mountain Time, and arrives at the Denver Union Station at 11:25 A.M. Transfer to hotel provided. Luncheon, dinner, and room with bath provided at hotel. Sightseeing trip of business and residential sections of Denver provided.

*Sixth Day*—At 7:45 A.M. one leaves the hotel by Rocky Mountain Parks Transportation Company motor car for Rocky Mountain National-Estes Park, seventy-five miles northwest of Denver. This gorgeous ride takes one through the fabulously rich Clear Creek Valley, to Loveland, thence into the mountains through the famous Big Thompson Canyon, reaching Estes Park Village at 12:00 Noon, where luncheon is served, following which transfer will be made to a comfortable mountain lodge, where room and all meals will be provided during the stay.

*Seventh to Thirteenth Day*—At the mountain lodges of Rocky Mountain National-Estes Park delightful people are met and every opportunity is offered for all forms of outdoor life—hiking, riding, motoring—or simply resting and enjoying the rugged and beautiful scenery.

Saddle horses are available at reasonable rates, and camping parties may be joined if one desires.

In the evenings, music, dancing, cards, and other pastimes provide ample entertainment.



**Thirteenth Day** — The lodge is left at 11:00 A.M. in a Rocky Mountain Parks Transportation Company car for Estes Park Village, where luncheon is provided. At 1:00 P.M. the Transportation Company's cars leave the Village, returning to Denver via South St. Vrain route — one of the most beautiful mountain highways in Colorado. On the way one skirts Long's Peak, highest in the park, and passes through Peaceful Valley, Allen's Park, South St. Vrain Canyon, and the little city of Boulder at the mouth of exquisite Boulder Canyon—a 93-mile motor trip of unrivaled beauty and interest.

Denver is reached at 6:00 P.M., and dinner is provided in the Union Station Restaurant, famous for its good meals.

The Rock Island train leaves Denver from the Union Station at 11:20 P.M. Mountain Time, carrying through observation car, dining car, etc.

**Fourteenth Day** — Again one passes through the great "bread basket" of Kansas, Nebraska, and Iowa, and whether it is "apple blossom time" or grain harvesting time this is always interesting.

Many of the products of this section are served in the dining car, where breakfast, luncheon, and dinner are provided.

**Fifteenth Day** — Arrive Chicago—La Salle Street Station—via Rock Island Lines at 6:59 A.M. Central Time—and Vacation Time, 1929, passes into history! Over all too soon, nevertheless it leaves vigor and refreshment in its train and fills the mind with delightful memories.

#### COST OF TOUR C

FROM	Without Railroad Ticket	With Railroad Ticket	FROM	Without Railroad Ticket	With Railroad Ticket
<b>CHICAGO</b>			<b>KANSAS CITY</b>		
1 person occupying lower	\$113.95	\$157.00	1 person occupying lower	\$100.95	\$128.80
2 persons occupying lower	103.07 ea.	146.12 ea.	2 persons occupying lower	94.57 ea.	122.42 ea.
1 person occupying upper	109.59	152.64	1 person occupying upper	98.39	126.24
<b>ST. LOUIS</b>			<b>ST. JOSEPH</b>		
1 person occupying lower	112.45	150.25	1 person occupying lower	100.95	128.80
2 persons occupying lower	102.32 ea.	140.12 ea.	2 persons occupying lower	94.57 ea.	122.42 ea.
1 person occupying upper	108.39	146.19	1 person occupying upper	98.39	126.24
<b>DES MOINES</b>			<b>MEMPHIS</b>		
1 person occupying lower	108.69	138.79	<b>VIA FRISCO LINES TO KANSAS CITY</b>		
2 persons occupying lower	100.44 ea.	130.54 ea.	1 person occupying lower	113.95	164.00
1 person occupying upper	105.39	135.49	2 persons occupying lower	103.07 ea.	153.12 ea.
<b>MINNEAPOLIS AND ST. PAUL</b>			1 person occupying upper	105.99	159.64
1 person occupying lower	112.45	157.10	<b>DALLAS</b>		
2 persons occupying lower	102.32 ea.	146.97 ea.	1 person occupying lower	109.44	151.44
1 person occupying upper	108.39	153.04	2 persons occupying lower	100.81 ea.	142.82 ea.
<b>OMAHA</b>			1 person occupying upper	105.99	147.99
1 person occupying lower	100.95	128.80	<b>FORT WORTH</b>		
2 persons occupying lower	94.57 ea.	122.42 ea.	1 person occupying lower	109.44	151.44
1 person occupying upper	98.39	126.24	2 persons occupying lower	100.81 ea.	142.82 ea.
			1 person occupying upper	105.99	147.99

NOTE: Rates quoted for this Tour, from stations for which train schedules are not given, are computed on use of directly connecting Rock Island trains into Colorado Springs, and on the return from Denver to starting point. Complete information as to train schedules from stations indicated, also rates and schedules from other Rock Island and connecting line stations, will be furnished on application to any representative listed on page 40.

## De Luxe Tour D

### FROM CHICAGO

**First Day** — Leave Chicago via Rock Island Lines from the La Salle Street Station at 10:30 A.M. on the famous *Rocky Mountain Limited* any day that suits you.

Luncheon and dinner are provided in the dining car, and spare time may be spent in the observation club car, where various facilities for entertainment are provided as one passes through the agricultural and stock-raising states of Illinois, Iowa, and Nebraska.

**Second Day** — After the breakfast provided in the dining car the clear, invigorating air proves that the train is imperceptibly climbing across western Kansas and eastern Colorado toward the mountains.

At 12:35 Noon (Mountain Time) Colorado Springs is reached and transfer is provided to Broadmoor or Antlers Hotel, either of which will be a delightful headquarters for the stay in the Pike's Peak Region.

Room with bath and all meals provided for the entire stop

**Third Day** — The morning has no set program, but every type of outdoor recreation may be enjoyed within a short distance of the hotel. Golf, tennis, swimming, boating, as well as hiking, riding, or motoring are available and popular.

In the afternoon a motor trip is provided which includes a visit to the Garden of the Gods, Cave of the Winds, South Cheyenne Canyon, Seven Falls, and other interesting points.

**Fourth Day** — The morning and evening are again free, but in the afternoon the greatest treat of all this region is provided—a motor trip to the summit of Pike's Peak.

While the views from the top are far-reaching and awe-inspiring, the upward ride through twisting canyons and over serpentine highways is no less delightful than the pause on the crest.

**Fifth Day** — In the morning another marvelously scenic trip is provided—a motor ride up the Broadmoor-Cheyenne Mountain Highway, one of the recent accomplishments in road building in this section.

After lunch, transfer is made to the station where a Denver & Rio Grande Western train leaves at 12:30 for Denver. This route parallels the Front Range and penetrates some of the picturesque scenery of the foothills.

Denver Union Station is reached at 2:45 P.M. Mountain Time, and transfer is made to either Brown Palace or Cosmopolitan Hotel, headquarters during the stay in the city.

Room with private bath and all meals are provided for the entire stay in Denver.

**Sixth Day** — Whenever there is an afternoon or morning free the tennis and golf enthusiasts will find ample facilities for sport at the various country clubs and at the many municipal courses and courts.



In the afternoon a motor sightseeing trip is provided which takes one through the business and residential sections of the city, also through several of the parks, the Habitat Zoo, and many of the landscaped boulevards.

**Seventh Day** — Following breakfast at the hotel one leaves at 9:00 A.M. for a motor trip up Mount Evans to Echo Lake—the famous Timberline Trail that winds through shadowed canyons and up wooded mountain sides and provides some of the most far-reaching and alluring views in Colorado. On the way one passes through the little city of Golden, seat of the Colorado School of Mines, over Lookout Mountain, where a stop is made at the grave of Buffalo Bill and the museum of his Indian and wild west souvenirs. Then on through Bergen Park and up to Echo Lake, where a stop of one and one-half hours will be made at a mountain inn for luncheon.

The return is made through beautiful Bear Creek Canyon, Evergreen, and Morrison, arriving in Denver in time for dinner.

**Eighth Day** — Leave Denver by Rocky Mountain Parks Transportation Company motor car at 7:45 A.M. en route for Rocky Mountain National-Estes Park, taking the justly-celebrated Big Thompson Canyon way, and reaching Estes Park Village about 12:00 Noon.

Choice is given here of either the Stanley Hotel, Estes Park Chalets, or the Lewiston Hotel, all delightfully located and modern in every detail, for headquarters during the stay in this region. Room with private bath and all meals are provided.

There are ample facilities for golf and tennis; saddle horses and motor cars are available at reasonable rates; and camping parties may be arranged if desired.

In the evenings there is music, dancing, and cards.

**Ninth Day** — This is a day of "go-as-you-please," but there is plenty to do for those actively inclined and opportunity for rest and quiet for those less strenuously constituted. The rugged mountains rising on every side and shadowing the little valley wherein the village lies are an inspiration and a rest to those in the calm harbors of the dignified hotels on the heights.

**Tenth Day** — Following luncheon one leaves the hotel by motor car of the Rocky Mountain Parks Transportation Company for the marvelous Fall River trip to Grand Lake, the way leading through Horseshoe Park, around the shoulders of mountains, and up to the top of Fall River Pass. Thence over the Continental Divide and down on the western side of the great range, arriving at Grand Lake Lodge at 6:00 P.M.

Here room with bath and all meals are provided for the stay.

**Eleventh and Twelfth Days** — Very few spots are so rich in natural beauty as the immediate territory surrounding Grand Lake Lodge. From the rustic portico in front of the lodge one looks down on beautiful Grand Lake, at the foot of the mountain, and on every other side the mountains rise in seriated majesty. It is a delightful place in which to spend a few days doing the things which tempt one most. The limpid waters of the lake offer beach-

bathing, boating, and fishing, while the mountains are rich in wooded trails for hiking, riding, and camping.

**Thirteenth Day** — On this day, unless one makes special arrangements, one must say goodbye to this lovely region for the Transportation Company's motor cars leave at 8:00 A.M. for Denver, passing through high agricultural valleys, mountain towns, and summer resorts; pausing a few moments at the west portal of the newly-completed Moffat Tunnel (nearly seven miles long), and then climbing up to Berthoud Pass, over the Continental Divide again, and down the other side as far as Idaho Springs, which is reached at 12:30 Noon.

Idaho Springs is world-known for its radio-active hot springs, and it is, as well, the center of a mining district that is rich in minerals, in history, and in scenery. Here luncheon is provided at Placer Inn.

At 2:30 P.M. the Transportation Company's cars leave Idaho Springs, continuing on down the eastern side of the main range, through Denver's Mountain Parks, down the Lariat Trail, and into Denver at 5:00 P.M.

Dinner is provided at the hotel. Transfer to Union Station in time to leave Denver over Rock Island Lines at 11:20 P.M. Mountain Time on train carrying observation car, dining car, etc.

**Fourteenth Day** — Homeward bound, speeding through the rich food-producing states of Kansas, Nebraska, and Iowa. Breakfast, luncheon, and dinner provided in dining car.

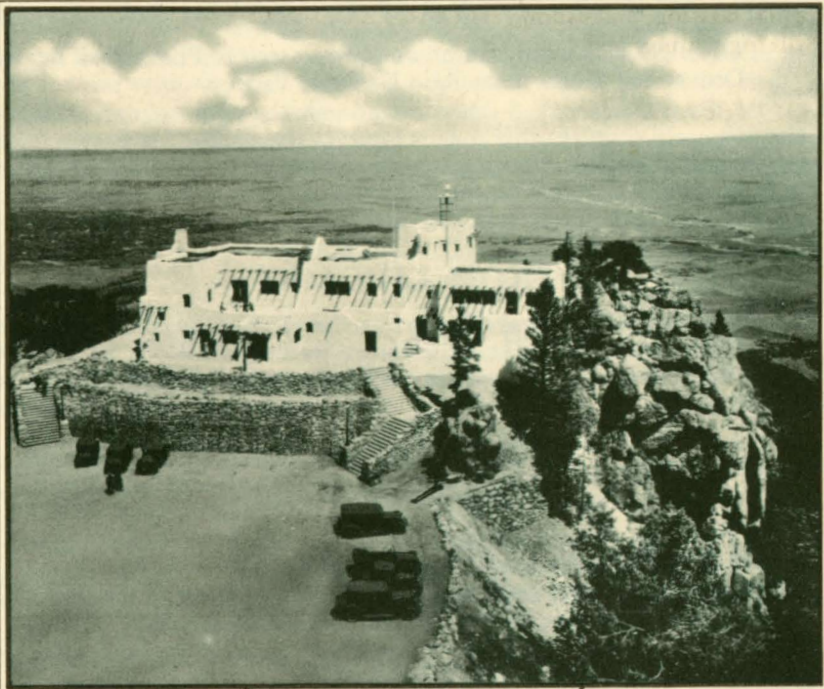
**Fifteenth Day** — At 6:59 A.M. Central Time one arrives at the La Salle Street Station, Chicago, via Rock Island Lines. *"And the joy of pleasures tasted tempers grief for pleasures past."*

### COST OF TOUR D

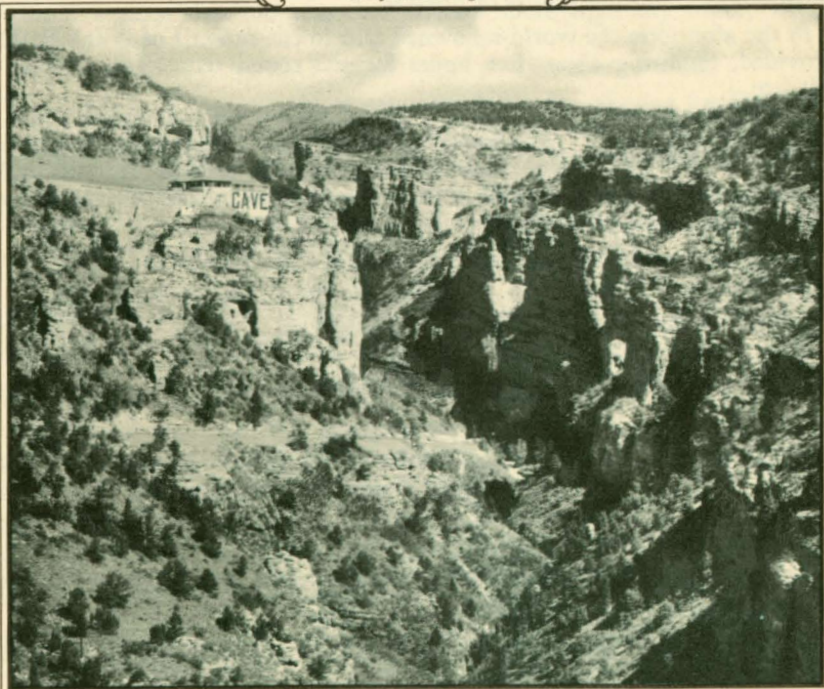
FROM	Without Railroad Ticket	With Railroad Ticket	FROM	Without Railroad Ticket	With Railroad Ticket
<b>CHICAGO</b>			<b>KANSAS CITY</b>		
1 person occupying lower	\$206.95	\$250.00	1 person occupying lower	\$192.95	\$220.80
2 persons occupying lower	196.07 ea.	239.12 ea.	2 persons occupying lower	186.57 ea.	214.42 ea.
1 person occupying upper	202.59	245.64	1 person occupying upper	190.39	218.24
<b>ST. LOUIS</b>			<b>ST. JOSEPH</b>		
1 person occupying lower	206.95	244.75	1 person occupying lower	192.95	220.80
2 persons occupying lower	196.82 ea.	234.62 ea.	2 persons occupying lower	186.57 ea.	214.42 ea.
1 person occupying upper	202.89	240.69	1 person occupying upper	190.39	218.24
<b>DES MOINES</b>			<b>MEMPHIS</b>		
1 person occupying lower	200.19	230.29	<b>VIA FRISCO LINES</b>		
2 persons occupying lower	191.94 ea.	222.04 ea.	<b>TO KANSAS CITY</b>		
1 person occupying upper	192.89	226.99	1 person occupying lower	206.95	257.00
<b>MINNEAPOLIS</b>			2 persons occupying lower	196.07 ea.	246.12 ea.
<b>AND ST. PAUL</b>			1 person occupying upper	202.59	252.64
1 person occupying lower	206.95	251.60	<b>DALLAS</b>		
2 persons occupying lower	196.82 ea.	241.47 ea.	1 person occupying lower	203.94	245.94
1 person occupying upper	202.89	247.54	2 persons occupying lower	195.32 ea.	237.32 ea.
<b>OMAHA</b>			1 person occupying upper	200.49	242.49
1 person occupying lower	192.95	220.80	<b>FORT WORTH</b>		
2 persons occupying lower	186.57 ea.	214.42 ea.	1 person occupying lower	203.94	245.94
1 person occupying upper	190.39	218.24	2 persons occupying lower	195.32 ea.	237.32 ea.
			1 person occupying upper	200.49	242.49

NOTE: On Tour D, where two persons occupy same room at hotels, a reduction in the individual rate will be made. Rates quoted for this Tour, from stations for which train schedules are not given, are computed on use of directly connecting Rock Island trains into Colorado Springs, and on the return from Denver to starting point. Complete information as to train schedules from stations indicated, also rates and schedules from other Rock Island and connecting line stations, will be furnished on application to any representative listed on page 40.





Cheyenne Lodge



Cave of the Winds

## Tour E

**A** COMBINATION rail, motor, and hiking tour to Pike's Peak Region, Denver and Rocky Mountain National Park.

For the active and athletic who love the wild and natural beauty of the mountain country, this tour is especially arranged. At Bear and Fern Lake Lodges, all trips are on foot unless one wishes to hire saddle horses. This is sometimes done but as the trails are of easy grade and ample time is allowed, the trips are delightfully invigorating instead of tiresome.

### FROM CHICAGO

*First Day* — One leaves Chicago at the close of any convenient day from the La Salle Street Station, via Rock Island Lines at 11:30 P.M. Central Time, on a train which carries through observation car, diner, etc.

*Second Day* — En route through Iowa, Nebraska, and Kansas. Breakfast, luncheon, and dinner provided in dining car.

*Third Day* — Arrive Colorado Springs via Rock Island Lines at 7:30 A.M. Mountain Time.

All transfers to station and hotels provided during stay in Colorado. At the hotel, room with private bath and all meals are provided.

During the morning the "little circle" tour is provided, including the Garden of the Gods, Cave of the Winds, South Cheyenne Canyon, Seven Falls, Broadmoor, and other points of interest.

In the afternoon the world-renowned trip to the summit of Pike's Peak is provided, requiring about five hours for the round trip. The evening is left free.

*Fourth Day* — After breakfast at the hotel and transfer to the station, one leaves Colorado Springs at 9:10 A.M. Mountain Time, via Colorado & Southern Railway, and arrives Denver (Union Station) at 11:25 A.M.

Luncheon provided at the famous Union Station Restaurant.

In the afternoon there is a trip through Denver's Mountain Parks to Lookout Mountain, where a stop is made to visit the grave of Buffalo Bill and the rustic Museum which contains his Indian and Wild West souvenirs.

Return is made to hotel where room with private bath and meals are provided.

*Fifth Day* — After breakfast at the hotel, one leaves Denver by Rocky Mountain Parks Transportation Company motor car, at 7:45 A.M. for the trip to Rocky Mountain National-Estes Park by way of Big Thompson Canyon.

Luncheon provided at Estes Park Village, three miles east of National Park boundary.

Arrive Bear Lake Lodge, in the heart of Rocky Mountain National Park, at 3:00 P.M.

Room and meals provided during stay at Bear Lake Lodge.



**Sixth Day** — While the program of individuals at Bear Lake Lodge will be altered somewhat by the desire to join other hikers or guided parties, the following suggestions have been carefully worked out with the idea of making the easier and shorter trips first until one is thoroughly accustomed to grades and trails. Lunches are put up for those planning to be absent all day.

For the first day in the hills—the sixth of the tour—explore the Dream Lake country and Tyndall Gorge.

**Seventh Day** — Visit Lake Mills, Glacier Gorge and Lochvale.

**Eighth Day** — Leave Bear Lake Lodge for Fern Lodge. This is a hiking trip over a good trail of easy grades through a most delightfully picturesque and scenic region, and is made daily all summer by persons of all ages.

Rooms and meals provided at Fern Lodge during stay.

**Ninth Day** — Visit Limber Mountain.

**Tenth Day** — Visit Spruce Canyon, Spruce Lake, The Castle, Hour-Glass Lake, Rainbow Lake, and Sprague's Glacier.

**Eleventh Day** — For the last day in the wild scenery there is no regular schedule, but there will be plenty of places one wishes to visit, plenty one has longed to do in the other days without finding time, so this day perhaps more than any other, will be full of delight.

**Twelfth Day** — After breakfast leave Fern Lodge for Estes Park Village by way of the famous Fern Lake Trail, arriving at the village about noon, where luncheon will be provided.

The return to Denver is made by the Rocky Mountain Transportation Company motor car through the wild and rugged scenery of North St. Vrain Canyon, arriving about 5:30 P.M.

Before dinner, a sightseeing trip through Denver's beautiful residential and business district is provided, returning to Union Station where dinner is provided in the restaurant.

At 11:20 P.M. Mountain Time, the Rock Island train leaves the Union Station equipped with through observation car and diner, and the vacationist is headed east—tanned, strengthened, and happy over an unusual trip which has brought him close to Nature and shown him "sermons in stones, books in running brooks, and God in everything."

**Thirteenth Day** — This day is spent en route through the Middle West. Breakfast, luncheon, and dinner are provided in the dining car.

**Fourteenth Day** — Chicago is reached via Rock Island Lines, La Salle Street Station, at 6:59 A.M., in time for a business day if that is necessary.

## COST OF TOUR E

FROM	Without Railroad Ticket	With Railroad Ticket	FROM	Without Railroad Ticket	With Railroad Ticket
<b>CHICAGO</b>			<b>KANSAS CITY</b>		
1 person occupying lower	\$118.95	\$162.00	1 person occupying lower	\$105.95	\$133.80
2 persons occupying lower	108.07 ea.	151.12 ea.	2 persons occupying lower	99.57 ea.	127.42 ea.
1 person occupying upper	114.59	157.64	1 person occupying upper	103.39	131.24
<b>ST. LOUIS</b>			<b>ST. JOSEPH</b>		
1 person occupying lower	117.45	155.25	1 person occupying lower	105.95	133.80
2 persons occupying lower	107.32 ea.	145.12 ea.	2 persons occupying lower	99.57 ea.	127.42 ea.
1 person occupying upper	113.39	151.19	1 person occupying upper	103.39	131.24
<b>DES MOINES</b>			<b>MEMPHIS</b>		
1 person occupying lower	113.69	143.79	<b>VIA FRISCO LINES TO KANSAS CITY</b>		
2 persons occupying lower	105.44 ea.	135.54 ea.	1 person occupying lower	118.95	169.00
1 person occupying upper	110.39	140.49	2 persons occupying lower	108.07 ea.	158.12 ea.
<b>MINNEAPOLIS AND ST. PAUL</b>			1 person occupying upper	114.59	164.64
1 person occupying lower	117.45	162.10	<b>DALLAS</b>		
2 persons occupying lower	107.32 ea.	151.97 ea.	1 person occupying lower	114.44	156.44
1 person occupying upper	113.39	158.04	2 persons occupying lower	105.82 ea.	147.82 ea.
<b>OMAHA</b>			1 person occupying upper	110.99	152.99
1 person occupying lower	105.95	133.80	<b>FORT WORTH</b>		
2 persons occupying lower	99.57 ea.	127.42 ea.	1 person occupying lower	114.44	156.44
1 person occupying upper	103.39	131.24	2 persons occupying lower	105.82 ea.	147.82 ea.
			1 person occupying upper	110.99	152.99

NOTE: Rates quoted for this Tour, from stations for which train schedules are not given, are computed on use of directly connecting Rock Island trains into Colorado Springs, and on the return from Denver to starting point. Complete information as to train schedules from stations indicated, also rates and schedules from other Rock Island and connecting line stations, will be furnished on application to any representative listed on page 40.



North Cheyenne Canyon



## Tour F

*A Combination Tour of Pike's Peak Region, San Isabel National Forest, Denver and Grand Circle Tour of Rocky Mountain National Park*

### FROM CHICAGO

**First Day**—Leave Chicago any convenient day from the La Salle Street Station via Rock Island Lines at 11:30 P.M. Central Time. Train carries through observation car, diner, etc.

**Second Day**—En route through the farming country. Breakfast, luncheon, and dinner provided in dining car.

**Third Day**—Arrive Colorado Springs via Rock Island Lines at 7:30 A.M. Mountain Time.

All transfers to station and hotel provided during stay in Colorado. At the hotel, room with bath and meals are provided.

Following breakfast, sightseeing trip by motor car is provided, including Garden of the Gods, Cave of the Winds, Seven Falls, South Cheyenne Canyon, Broadmoor, and other points of interest.

Afternoon and evening free.

**Fourth Day**—After breakfast at hotel, trip to summit of Pike's Peak by motor is provided. After luncheon at hotel and transfer to station, Colorado Springs is left at 3:45 P.M. for a trip to Pueblo over the D. & R. G. W. R. R.

Pueblo is reached at 4:45 P.M., and at one of its fine hotels, room with bath, dinner, and breakfast are provided.

**Fifth Day**—After breakfast the hotel is left at 8:00 A.M. by motor car for San Isabel National Forest, going through the historic and scenic territory in which Pine Drive, Squirrel Creek Canyon, Sensation Point, Second Mace, South Hardscrabble, and Lowell Canyon are outstanding names.

A stop is made at a mountain inn for luncheon, after which the trip is continued up North Hardscrabble Canyon, also known as Kit Carson Trail.

All of this country is noted not only for its beautiful scenery and unusual formations, but is also one of the earliest mining districts of the West, hence one passes the early Bassick Mine in which Mark Twain was a stockholder, drives through Silvercliff, an abandoned mining town, once so wealthy and important that it came within a few votes of being made the capital of Colorado, and pauses a moment at Westcliffe, still the center of considerable mining activity.

On the western boundary of the San Isabel District rises one of the highest and longest uninterrupted mountain ranges in the world—the Sangre de Cristo Range—many of whose high-flung serrated peaks have never been climbed.

The night is spent at one of the comfortable mountain inns, where room, dinner, and breakfast are provided.

*Sixth Day*— After breakfast at the Inn, the motor trip is continued along the Sangre de Cristo Range through a series of marvelously beautiful canyons — Texas Creek Canyon, thence along the top of the Royal Gorge and stopping at a convenient inn for luncheon.

After luncheon and a brief rest, the drive is continued to Priest Canyon over the Skyline Drive and to Canon City, through its wonderful orchard country. Then on through Florence with its oil wells, the Arkansas Valley, and into Pueblo for the night.

Room with bath, dinner, and breakfast are provided at the hotel.

*Seventh Day*— After breakfast at the hotel and transfer to the station, Pueblo is left at 8:30 A.M. via a north-bound D. & R. G. W. R. R. train. The route is an interesting one, with the main range and its foothills on one hand and a rich farming country stretching eastward on the other.

Denver is reached at 1:00 P. M., and transfer is made to hotel where room with private bath, luncheon, dinner, and breakfast next morning, will be provided.

In the afternoon a sightseeing trip around Denver's beautiful parks and boulevards, including the residential and business districts, is provided.

*Eighth Day*— After breakfast at the hotel, a motor car of the Rocky Mountain Parks Transportation Company is boarded at 7:45 A.M. for the first part of the Grand Circle tour of Rocky Mountain National-Estes Park. Traveling northward from Denver, one traverses the rich Clear Creek Valley, passing through several charming little cities with their huge sugar beet factories, universities, etc., pausing briefly at Loveland where the cars turn westward into the mountains and then into the deep, dim, tree-shaded canyon of the Big Thompson River, over a wonderful road and through beautiful scenery.

Shortly before noon the cars reach Estes Park Chalets, just inside the Park boundary, where room and meals for three days are provided.

The afternoon and evening are left free, but one finds many activities on foot.

*Ninth and Tenth Days*— There is no prearranged schedule for these days, as the visitor is usually governed by activities which originate at the hotel. Tennis, hiking, horseback riding are available, camping parties may be joined if desired, and an 18-hole golf course is within a few minutes' motor ride.

*Eleventh and Twelfth Days*— After breakfast at the Chalets, the Rocky Mountain Parks Transportation Company's motor car leaves for the marvelous Fall River trip, passing through Horseshoe Park and crossing the Continental Divide through Fall River and Milner passes, thence down on the other side into the Kawunweeche Valley, arriving Grand Lake at noon.

Grand Lake Lodge is located on the side of a beautiful and picturesque mountain, in the heart of a network of trails for foot and horse. Lovely Grand Lake, at the foot of the mountain, is but a short trip away by either trail or motor, and these things give an infinite variety of outdoor activities—boating, bathing, hiking, riding are among the favorites.



Room and meals for two days are provided at this delightful lodge. The days are free for anything desired, and in the evenings there is music, dancing, and yarn-spinning in the big rustic lounge.

**Thirteenth Day** — After breakfast at the lodge, the motor car leaves at 8:00 A.M. for the continuance of the Grand Circle, going through high agricultural valleys, prosperous resort and mining towns, the west portal of the famous Moffat Tunnel, and crossing the Continental Divide, this time by way of Berthoud Pass. Then the way lies downward on the eastern side of the range and Idaho Springs is reached at 12:00 noon. Luncheon provided at Placer Inn.

The Hot Springs Cave Bath and Natatorium are of particular interest with their radio-active waters from the hot springs.

The Transportation Company's car leaves at 2:30 P.M. for Denver on the last arc of the Great Circle. The way lies through Denver's Mountain Parks and on Lookout Mountain a stop is made at the grave of the late Buffalo Bill, and at the Museum which houses his Indian and Wild West souvenirs. Then the car descends the winding Lariat Trail, through the town of Golden and into Denver, arriving about 5:00 P.M.

Dinner is provided at the Union Station restaurant.

The Rock Island train leaves the Union Station for Chicago at 11:20 P.M. Mountain Time, carrying through observation car, diner, etc.

**Fourteenth Day** — En route through the great Middle West Source of Supplies.

Breakfast, luncheon, and dinner provided in dining car.

**Fifteenth Day** — Arrive Chicago via Rock Island Lines, La Salle Street Station, at 6:59 A.M. Central Time.  
*"And, the spell of the Western mountains lies over the Eastern plains."*

### COST OF TOUR F

FROM	Without Railroad Ticket	With Railroad Ticket	FROM	Without Railroad Ticket	With Railroad Ticket
<b>CHICAGO</b>			<b>KANSAS CITY</b>		
1 person occupying lower	\$156.95	\$200.00	1 person occupying lower	\$143.95	\$171.80
2 persons occupying lower	146.07 ea.	189.12 ea.	2 persons occupying lower	137.57 ea.	165.42 ea.
1 person occupying upper	152.59	195.64	1 person occupying upper	141.39	169.24
<b>ST. LOUIS</b>			<b>ST. JOSEPH</b>		
1 person occupying lower	155.45	193.25	1 person occupying lower	143.95	171.80
2 persons occupying lower	145.32 ea.	183.12 ea.	2 persons occupying lower	137.57 ea.	165.42 ea.
1 person occupying upper	151.39	189.19	1 person occupying upper	141.39	169.24
<b>DES MOINES</b>			<b>MEMPHIS</b>		
1 person occupying lower	151.69	181.79	<b>VIA FRISCO LINES TO KANSAS CITY</b>		
2 persons occupying lower	143.44 ea.	173.54 ea.	1 person occupying lower	156.95	207.00
1 person occupying upper	148.39	178.49	2 persons occupying lower	146.07 ea.	196.12 ea.
<b>MINNEAPOLIS AND ST. PAUL</b>			1 person occupying upper	152.59	202.64
1 person occupying lower	155.45	200.10	<b>DALLAS</b>		
2 persons occupying lower	145.32 ea.	189.97 ea.	1 person occupying lower	152.44	194.44
1 person occupying upper	151.39	196.04	2 persons occupying lower	143.82 ea.	185.82 ea.
<b>OMAHA</b>			1 person occupying upper	148.99	190.99
1 person occupying lower	143.95	171.80	<b>FORT WORTH</b>		
2 persons occupying lower	137.57 ea.	165.42 ea.	1 person occupying lower	152.44	194.44
1 person occupying upper	141.39	182.24	2 persons occupying lower	143.82 ea.	185.82 ea.
			1 person occupying upper	148.99	190.99

NOTE: Tour F—Tickets from Texas points should be routed via Rock Island Lines to Denver, D. & R. G. W. to Pueblo, returning same route. Denver coupon on going trip will be honored to Colorado Springs.

Rates quoted for this Tour, from stations for which train schedules are not given, are computed on use of directly connecting Rock Island trains into Colorado Springs, and on the return from Denver to starting point. Complete information as to train schedules from stations indicated, also rates and schedules from other Rock Island and connecting line stations, will be furnished on application to any representative listed on page 40.

## Tour C

*Happily Combining Recreation and Real Rest*

### FROM CHICAGO

**First Day**—Leave Chicago, La Salle Street Station, via the Rock Island Lines, on the day that suits you best, after business or work is over, at 11:30 P.M. Central Time.

**Second Day**—En route through the land of tall corn and fine stock. Breakfast, luncheon, and dinner provided in dining car.

**Third Day**—The Rock Island train arrives at Colorado Springs, Colorado, at 7:30 A.M. Mountain Time, and transfer is made to hotel where room with bath and all meals are provided until the forenoon of the fifth day.

In the afternoon a motor trip is provided through Garden of the Gods, to Cave of the Winds, then to South Cheyenne Canyon, Seven Falls, the Broadmoor district, and other points of interest.

**Fourth Day**—At 8:00 A.M. a motor trip to the summit of Pike's Peak is provided. This requires about five hours and takes one through some of the most beautiful scenery in the world, over a highway that cost millions of dollars.

**Fifth Day**—The morning is left free to rest or roam as one chooses. After luncheon, transfer is made to D. & R. G. W. R. R. station leaving at 4:00 P. M., arriving Pueblo 5:00 P. M. Transfer is made to hotel where room with bath, dinner, and breakfast are provided.

**Sixth Day**—After breakfast at the hotel, motor car leaves at 8:00 A.M. for San Isabel National Forest, by way of Wetmore, Kit Carson Rock and Trail, North Hardscrabble Canyon, and Brush Hollow.

A stop is made at a mountain inn for luncheon; then the route takes one through Silvercliff and Westcliffe, along the Sangre de Cristo Range, to the Flower Garden, an ideal mountain lodge where room and meals are provided.

**Seventh to Twelfth Day**—At the Flower Garden which is a unique and delightful resort—well conducted and charmingly located at the base of a mountain with good roads and trails leading in every direction to points of interest. Well-built cabins, with running water and electric lights, afford pleasant living quarters, with just a touch of rusticity. In close proximity is the main lodge with its big, comfortable lounge, and an attractive dining room where excellent meals are served. Each cabin is named for a Colorado wildflower, while the main lodge is called "The Columbine," after the state emblem—hence the name of this clever resort. Daily programs may be arranged to include horseback riding, tennis, hiking, trip to gold mine in active operation, trout fishing in mountain lakes and streams, log fire parties at night, dancing, cards, etc.



**Twelfth Day**— After breakfast leave the Flower Garden by automobile, passing through Hillside and down Texas Creek to the Arkansas River, to the top of the Royal Gorge, thence through Priest's Canyon and over the marvelous Skyline Drive to Canon City.

Luncheon is provided at Canon City, and afterward the trip is continued through the town and its surrounding orchards to Pueblo.

Here room with bath, dinner, and breakfast are provided at the hotel.

**Thirteenth Day**— After breakfast, transfer to the Union Station and leave Pueblo via D. & R. G. W. R. R. at 9:00 A.M. Mountain Time, traveling along the foot of the Front Range to Denver

Arrive Denver (Union Station) at 1:00 P.M., where luncheon is provided in the Union Station restaurant.

From the Union Station, one leaves at 2:00 P.M. in motor cars for sight-seeing trip which includes Denver's business and residential districts, also Civic Center, Cheesman Park, City Park with its Habitat Zoo and Museum. The trip ends at a downtown hotel, where dinner is provided.

At 10:30 P.M. Mountain Time, transfer is made to the Union Station, and Denver is left via Rock Island Lines at 11:20 P.M.

**Fourteenth Day**— En route through the Middle West. Breakfast, luncheon, and dinner provided in dining car.

**Fifteenth Day**— Reach Chicago via Rock Island Lines, La Salle Street Station, at 6:59 Central Time.

### COST OF TOUR G

FROM	Without Railroad Ticket	With Railroad Ticket	FROM	Without Railroad Ticket	With Railroad Ticket
<b>CHICAGO</b>			<b>KANSAS CITY</b>		
1 person occupying lower	\$113.95	\$157.00	1 person occupying lower	\$100.95	\$128.80
2 persons occupying lower	103.07 ea.	146.12 ea.	2 persons occupying lower	94.57 ea.	122.42 ea.
1 person occupying upper	109.59	152.64	1 person occupying upper	98.39	126.24
<b>ST. LOUIS</b>			<b>ST. JOSEPH</b>		
1 person occupying lower	112.45	150.25	1 person occupying lower	100.95	128.80
2 persons occupying lower	102.32 ea.	140.12 ea.	2 persons occupying lower	94.57 ea.	122.42 ea.
1 person occupying upper	108.39	146.19	1 person occupying upper	98.39	126.24
<b>DES MOINES</b>			<b>MEMPHIS</b>		
1 person occupying lower	108.69	138.79	<b>VIA FRISCO LINES</b>		
2 persons occupying lower	100.44 ea.	130.54 ea.	<b>TO KANSAS CITY</b>		
1 person occupying upper	105.39	135.49	1 person occupying lower	113.95	164.00
<b>MINNEAPOLIS</b>			2 persons occupying lower	103.07 ea.	153.12 ea.
<b>AND ST. PAUL</b>			1 person occupying upper	109.59	159.64
1 person occupying lower	112.45	157.10	<b>DALLAS</b>		
2 persons occupying lower	102.32 ea.	146.97 ea.	1 person occupying lower	109.44	151.44
1 person occupying upper	108.39	153.04	2 persons occupying lower	100.82 ea.	142.82 ea.
<b>OMAHA</b>			1 person occupying upper	105.99	147.99
1 person occupying lower	100.95	128.80	<b>FORT WORTH</b>		
2 persons occupying lower	94.57 ea.	122.42 ea.	1 person occupying lower	109.44	151.44
1 person occupying upper	98.39	126.24	2 persons occupying lower	100.82 ea.	142.82 ea.
			1 person occupying upper	105.99	147.99

NOTE: Tour G—Tickets from Texas points should be routed via Rock Island Lines to Denver, D. & R. G. W. to Pueblo, returning same route. Denver coupon on going trip will be honored to Colorado Springs.

Rates quoted for this Tour, from stations for which train schedules are not given, are computed on use of directly connecting Rock Island trains into Colorado Springs, and on the return from Denver to starting point. Complete information as to train schedules from stations indicated, also rates and schedules from other Rock Island and connecting line stations, will be furnished on application to any representative listed on page 40.

## Tour H

### *A Delightful Two Weeks Vacation at Minimum Cost*

**T**HIS trip may be made as low as \$114.12 from Chicago, with proportionate costs from other points, and is available daily from June 1 to early in September, giving eleven complete days in Colorado—the Vacationist's Paradise.

Ten days are spent at the Sunnyside Hotel, Manitou, Colorado, a comfortable, home-like establishment, equipped with good beds, running hot and cold water in rooms, baths and toilets conveniently located, electric lights, wholesome and properly cooked food prepared under the direction of the proprietor, and served in a cheery dining room.

### FROM CHICAGO

**First Day**— Leave Chicago via Rock Island Lines from the La Salle Street Station at 11:30 P.M. Central Time, any day of the week. Train carries through observation car and diner.

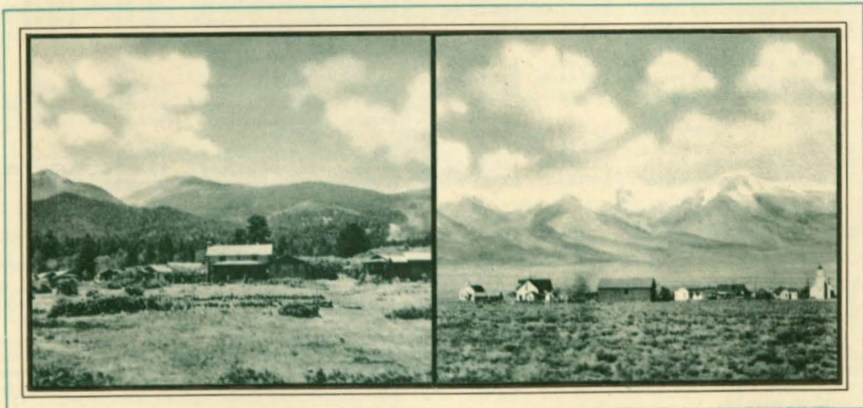
**Second Day**— En route through the country of tall corn and contented cows.

Breakfast, luncheon, and dinner provided in dining car.

**Third Day**— Arrive Colorado Springs via Rock Island Lines at 7:30 A.M. Mountain Time, and transfer to Sunnyside Hotel in Manitou, a delightful suburb of Colorado Springs, nestling at the foot of Pike's Peak.

**Third to Thirteenth Day**— The Sunnyside Hotel is headquarters for this period, all meals and lodging provided.

Sightseeing trips, which may be taken at the time that suits one best, are provided, and these include the thrilling and marvelous trip to the summit of Pike's Peak and return, also the "little circle" tour which takes one to such



The Flower Garden, San Isabel National Forest

Sangre de Cristo Range





*A Distant View of Pike's Peak*



*The Crag, Summit of Mt. Manitou*

well known places as Garden of the Gods, Cave of the Winds, South Cheyenne Canyon, Seven Falls, the Broadmoor District, and other interesting sections.

Foot and horse trails lead upward into the picturesque shoulders of the great peak, and saddle horses and burros may be had at reasonable rates.

**Thirteenth Day** — Following breakfast, transfer is made to the Santa Fe Station in Colorado Springs, the northbound train leaving for Denver at 9:10 A.M. via Colorado & Southern Railway. The Denver Union Station is reached at 11:25 A.M., and luncheon is provided in the famous Union Station restaurant.

At 1:30 P.M., a circle trip by automobile through Denver's Mountain Parks is provided, starting from the Union Station. This trip follows a broad paved highway, across Clear Creek Valley to Golden and up the Lariat Trail to the summit of Lookout Mountain where a stop is made at the grave of the late Buffalo Bill and at Pahaska Tepee, a rustic Museum which houses Colonel Cody's historic souvenirs of Indian and Wild West days.

From Lookout Mountain the trip continues through the Mountain Parks, past the Game Preserve, to the town of Evergreen and returns to Denver by beautiful Bear Creek Canyon.

Dinner is provided in the Union Station restaurant.

Leave Denver via Rock Island Lines from the Union Station at 11:20 P.M. Mountain Time.

**Fourteenth Day** — En route through the agricultural and stock-raising states of Kansas, Nebraska and Iowa. Breakfast, luncheon, and dinner provided in the dining car.

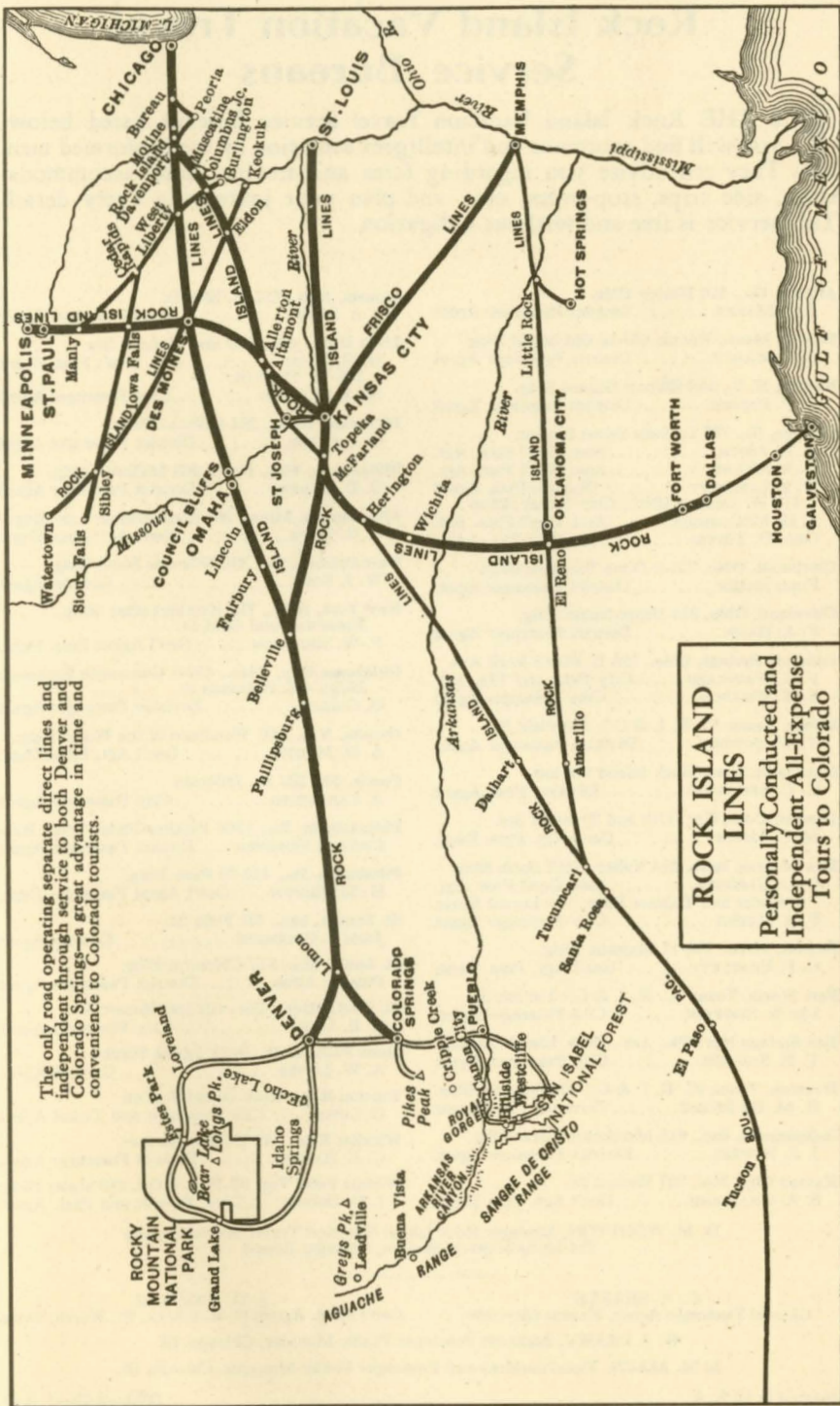
**Fifteenth Day** — Arrive Chicago via Rock Island Lines, La Salle Street Station, at 6:59 A.M. Central Time.  
*"With the love one had for Nature increased a thousandfold."*

### COST OF TOUR H

FROM	Without Railroad Ticket	With Railroad Ticket	FROM	Without Railroad Ticket	With Railroad Ticket
<b>CHICAGO</b>			<b>KANSAS CITY</b>		
1 person occupying lower	\$ 81.95	\$125.00	1 person occupying lower	\$68.95	\$96.80
2 persons occupying lower	71.07 ea.	114.12 ea.	2 persons occupying lower	62.57 ea.	90.42 ea.
1 person occupying upper	77.59	120.64	1 person occupying upper	66.39	94.24
<b>ST. LOUIS</b>			<b>ST. JOSEPH</b>		
1 person occupying lower	80.45	118.25	1 person occupying lower	68.95	96.80
2 persons occupying lower	70.32 ea.	108.12 ea.	2 persons occupying lower	62.57 ea.	90.42 ea.
1 person occupying upper	76.39	114.19	1 person occupying upper	66.39	94.24
<b>DES MOINES</b>			<b>MEMPHIS</b>		
1 person occupying lower	76.69	106.79	<b>VIA FRISCO LINES TO KANSAS CITY</b>		
2 persons occupying lower	68.44 ea.	98.54 ea.	1 person occupying lower	81.95	132.00
1 person occupying upper	73.39	103.49	2 persons occupying lower	71.07 ea.	121.12 ea.
<b>MINNEAPOLIS AND ST. PAUL</b>			1 person occupying upper	77.59	127.64
1 person occupying lower	80.45	125.10	<b>DALLAS</b>		
2 persons occupying lower	70.32 ea.	114.97 ea.	1 person occupying lower	77.44	119.44
1 person occupying upper	76.39	121.04	2 persons occupying lower	68.82 ea.	110.82 ea.
<b>OMAHA</b>			1 person occupying upper	73.99	115.99
1 person occupying lower	68.95	96.80	<b>FORT WORTH</b>		
2 persons occupying lower	62.57 ea.	90.42 ea.	1 person occupying lower	77.44	119.44
1 person occupying upper	66.39	94.24	2 persons occupying lower	68.82 ea.	110.82 ea.
			1 person occupying upper	73.99	115.99

NOTE: Rates quoted for this Tour, from stations for which train schedules are not given, are computed on use of directly connecting Rock Island trains into Colorado Springs, and on the return from Denver to starting point. Complete information as to train schedules from stations indicated, also rates and schedules from other Rock Island and connecting line stations, will be furnished on application to any representative listed on page 40.





The only road operating separate direct lines and independent through service to both Denver and Colorado Springs—a great advantage in time and convenience to Colorado tourists.

**ROCK ISLAND LINES**  
 Personally Conducted and Independent All-Expense Tours to Colorado

# Rock Island Vacation Travel Service Bureaus

**I**N THE Rock Island Vacation Travel Service Bureaus listed below, you will find courteous and intelligent attention by well-informed men. They can advise you regarding fares and service, hotel accommodations, side trips, stop-overs, etc., and plan your journey in every detail. This service is free and without obligation.

- Atlanta, Ga.,** 610 Healey Bldg.  
J. A. MARKS.....District Passenger Agent
- Boston, Mass.,** Rooms 409-10 Old South Bldg.  
T. J. GLANCY.....District Passenger Agent
- Buffalo, N. Y.,** 480 Ellicott Square Bldg.  
G. F. HANSON.....District Passenger Agent
- Chicago, Ill.,** 723 La Salle Street Station  
G. H. ASPER.....Asst. Gen'l Pass. Agt.  
D. MCCLURE.....Asst. Gen'l Pass. Agt.  
W. J. LAFFERTY.....Division Pass. Agent  
179 W. Jackson Blvd., City Ticket Office  
L. H. McCORMICK.....Asst. Gen'l Pass. Agt.  
GEO. D. TOTTEN.....City Tkt. Agent
- Cincinnati, Ohio,** 331-2 Dixie Terminal Bldg.  
FRED ANZER.....District Passenger Agent
- Cleveland, Ohio,** 314 Hippodrome Bldg.  
F. A. HAAS.....District Passenger Agent
- Colorado Springs, Colo.,** 125 E. Pike's Peak Ave.  
F. A. WERNLEIN.....City Pass. and Tkt. Agt.  
E. T. WILLSON.....City Passenger Agent
- Dallas, Texas (C. R. I. & G.),** 118 Field St.  
T. W. BOWDRY.....Division Passenger Agent
- Davenport, Iowa,** Rock Island Station  
C. C. ANDERSON.....Division Pass. Agent
- Denver, Colo.,** Cor. 17th and Tremont Sts.  
M. L. MOWRY.....Gen'l Agt. Pass. Dept.
- Des Moines, Iowa,** 614 Valley Nat'l Bank Bldg.  
C. C. GARDNER.....Asst. Gen'l Pass. Agt.  
Register and Tribune Bldg., 719 Locust Street  
F. R. KUHN.....City Passenger Agent
- Detroit, Mich.,** 209-11 Majestic Bldg.  
C. P. BRADLEY.....Gen'l Agt. Pass. Dept.
- Fort Worth, Texas (C. R. I. & G.)** 116 9th St.  
LEE R. SUMPTER.....City Passenger Agent
- Hot Springs Nat'l Pk., Ark.,** Rock Island Station  
T. H. SIMONDS.....City Passenger Agent
- Houston, Texas (C. R. I. & G.)** 406 Scanlon Bldg.  
R. M. DE MOSSE.....Traveling Pass. Agent
- Indianapolis, Ind.,** 615 Merchants Bank Bldg.  
J. F. POWERS.....District Passenger Agent
- Kansas City, Mo.,** 703 Walnut St.  
S. A. GILLILAND.....Gen'l Agt. Pass. Dept.
- Lincoln, Neb.,** 112 N. 13th St.  
J. A. DUFFY.....City Passenger Agent
- Little Rock, Ark.,** 2nd and McLean Sts.  
H. H. HUNT.....Asst. Gen'l Pass. Agent  
108 W. Third St.  
NEAL CLAYTON.....City Passenger Agent
- Memphis, Tenn.,** 284-5 Shrine Bldg.  
G. J. CISSEL.....District Passenger Agent
- Milwaukee, Wis.,** Room 903 Majestic Bldg.  
O. D. GARVEY.....District Passenger Agent
- Minneapolis, Minn.,** 200 Metropolitan Life Bldg.  
A. E. DOVE.....Gen'l Agt. Pass. Dept.
- New Orleans, La.,** 326 Hibernia Bank Bldg.  
W. J. FORD.....General Agent
- New York, N. Y.,** 723 Knickerbocker Bldg.,  
Broadway and 42nd St.  
P. W. JOHNSTON.....Gen'l Agent Pass. Dept.
- Oklahoma City, Okla.,** 407-8 Commerce Exchange  
Bldg., 4 S. Robinson St.  
O. COLLINS.....Division Passenger Agent
- Omaha, Neb.,** 701 Woodmen of the World Bldg.  
A. D. MARTIN.....Gen'l Agt. Pass. Dept.
- Peoria, Ill.,** 227 So. Jefferson  
A. LANGFELDT.....City Passenger Agent
- Philadelphia, Pa.,** 1204 Fidelity-Phila. Trust Bldg  
LINCOLN BURGHER.....District Passenger Agent
- Pittsburgh, Pa.,** 418-20 Park Bldg.  
H. M. BROWN.....Gen'l Agent Passenger Dept.
- St. Joseph, Mo.,** 421 Felix St.  
JOHN J. GOODRICH.....General Agent
- St. Louis, Mo.,** 817 Chemical Bldg.  
PHIL A. AUER.....District Passenger Agent
- St. Paul, Minn.,** Cor. 4th and Robert Sts.  
E. E. LIGHT.....City Passenger Agent
- Sioux Falls, S. D.,** Rock Island Station  
A. W. LITTLE.....General Agent
- Topeka, Kan.,** Rock Island Station  
C. LOWE.....City Passenger and Ticket Agent
- Wichita, Kan.,** 729 E. Douglas Ave.  
C. E. BASCOM.....District Passenger Agent
- Wichita Falls, Tex. (C. R. I. & G.),** 210 Staley Bldg.  
I. D. BROWN.....Trav. Freight and Pass. Agent

D. M. WOOTTON, Manager Rock Island Vacation Travel Service Bureau  
714 La Salle Street Station, Chicago, Illinois

C. A. SEARLE  
General Passenger Agent, Kansas City, Mo.

J. G. FARMER  
Gen'l Pass'r Agent, C. R. I. & G., Ft. Worth, Texas

W. J. LEAHY, Assistant Passenger Traffic Manager, Chicago, Ill.

L. M. ALLEN, Vice-President and Passenger Traffic Manager, Chicago, Ill.



