



California's Newest Scenic Marvel, the Wonderful Carriso Gorge, on San Diego Short Line
"Golden State" Route—Many Miles the Shortest to San Diego.



NEW, FAST, LUXURIOUS SERVICE TO CALIFORNIA *Via* THE GOLDEN STATE ROUTE

Over twenty-two years ago the Rock Island-Southern Pacific inaugurated its GOLDEN STATE LIMITED service to California. The success of this famous train has been significant. The train is popular—the route is popular. Popularity of that type is founded on reason.

The Golden State Route has responded to that popularity not only with increased facilities this season, but with a new, modern-in-every-respect GOLDEN STATE LIMITED—exclusively first class.

1925 service and accommodations consist of three fine fast trains; the GOLDEN STATE LIMITED from Chicago, Kansas City, St. Louis, St. Paul and Minneapolis; a new fast train from Chicago and Kansas City; and the CALIFORNIAN from Kansas City.

Incorporated in the new GOLDEN STATE LIMITED are all the luxuries and comforts of the finest hotel—plus a homey atmosphere of refinement and courtesy that will appeal to the most discriminating traveler, and at no extra fare. The buffet-club car includes barber shop, valet service and shower bath for men; and the new type observation car, especially designed for the comfort of women and children, includes ladies' lounge room, maid and manicure, shower bath and every convenience in which a woman's heart delights. The dressing rooms are spacious and

perfectly appointed. There is a better ventilation system throughout, comfortable chairs, telephone, writing desk, and writing material, and a reading lounge library, completely equipped. The standard Pullmans are of latest design arranged to suit every requirement.

Through diners for all meals—admittedly “the best on wheels”.

A new fast through train carrying both standard and tourist sleepers, chair cars, diner and observation car, and the CALIFORNIAN, another all-steel train providing standard and tourist sleeper accommodations, round out complete service via the Golden State Route.

The MEMPHIS-CALIFORNIAN daily from Memphis, Arkansas and Oklahoma to Los Angeles serves the heart of the Great Southwest.

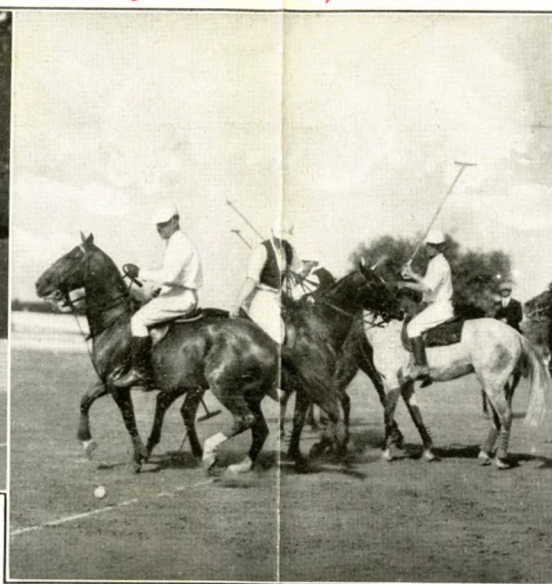
The Golden State Route offers a delightful combination of scenic charm and historical interest. It's the natural route to Southern California; the low altitude, mild weather way—fast as the fastest to Los Angeles—shortest and quickest to San Diego (through stupendous Carriso Gorge), and the only through service to Santa Barbara.

For schedules and details of Golden State Route service to California, inquire of nearest Rock Island or Southern Pacific representative listed on Pages 59-60 or address

L. M. ALLEN
Dice Pres. & Pass. Traf. Mgr.
Rock Island Lines
CHICAGO, ILLINOIS

J. H. R. PARSONS
Passenger Traffic Manager
Southern Pacific Lines
SAN FRANCISCO, CALIFORNIA

"Golden State" Route—Only 2281 miles, 68½ hours—Chicago—Los Angeles



California

FOR those who seek recreation, rest and change of scene, nowhere can their days be filled with such complete enjoyment as along that favored California coast that sweeps southward from the Golden Gate to San Diego. The wide expanse of the Pacific Ocean, blue skies, fanning breezes, towering sea-cliffs and long stretches of sandy shore; valleys of vivid green, undulating foothills rising toward distant mountain ranges, fragrant forests of pine and redwood, broad rivers and crystal streams—these make up the colorful charm of California.

The visitor to California will find there every form of outdoor pleasure. Even in its name there is a fascination, and those who are contemplating "The California Trip" can look forward to a sojourn in a region singularly attractive in its scenery, unusual in its vegetation and delightful in temperature.

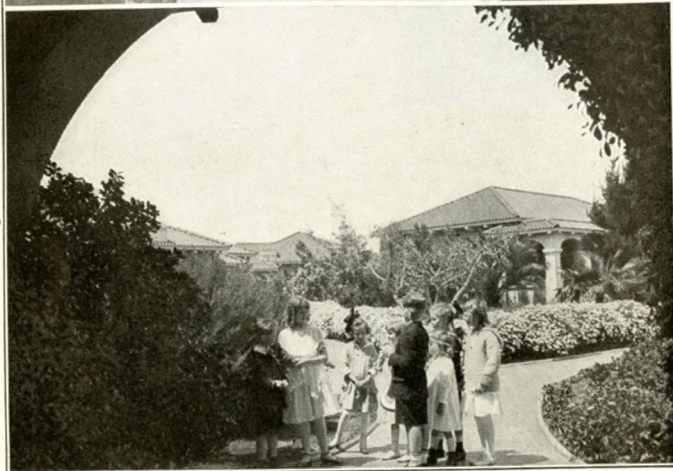
To its wonderful climate may be attributed California's bountiful offering of all-year-round outdoor sports. Almost any day—regardless of the calendar—one may play golf on sporty links; motor over roads of the smoothest; engage in tennis contests; speed through sparkling waters in motor-boat or yacht; enjoy sea bathing in the creaming surf of the Pacific; take horseback rides and hiking trips, or simply loll around and rest.

Fish of the gamest in lake, stream and ocean, and a wide variety of furred and feathered game await in season the coming of the angler and the hunter.

In addition to these attractions, California offers the historical and romantic associations of its old Franciscan Missions, and of its pioneer days made famous by the great overland rush following the discovery of gold in '49.

Facilities for engaging in many of the diversions mentioned are placed at the disposal of the visitor; most of the country clubs readily extend courtesies to the patrons of the leading hotels, and the latter quite generally maintain tennis courts, golf links, and other recreation fields. In addition to these the public parks and playgrounds are always available.

To California's native beauty of landscape new charms have been added and these the out-of-door enthusiast may enjoy. In sheltered valleys, orange trees show forth their green and gold. The olive and date, the pomegranate, fig, and pomelo—fruits of Mediterranean lands—all prosper in various localities. Orchards stretch far and wide, over foothill and plain, and when in March and early April they burst into blossom, the atmosphere is freshened with their fragrance. To the towering redwood and pine, to the gnarled live-oak and fantastic cypress, have been added the eucalyptus and the acacia from Australia, the pepper tree from South America and Spain.



California's climate makes outdoor life an endless joy for the children

(Photos by Harold A. Parker)

Palms from all the tropics have been planted, flourishing like the native trees of Palm Canyon, at the base of the San Jacinto Mountains. Flowers, which here bloom as nowhere else, add color to this all-year life out-of-doors.

California, too, is well able to take care of its visitors, and the wide range of accommodations at metropolitan and resort hotels, mineral springs and other outing places, assures to all an opportunity to select such as will best meet their requirements.

Golf—On Links that Charm from Tee to Putting Green

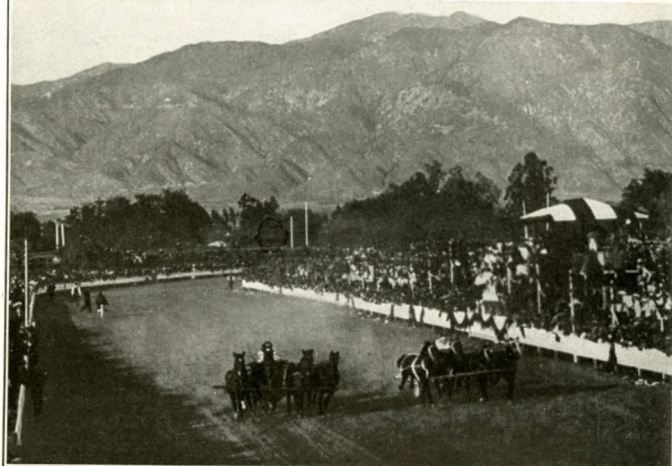
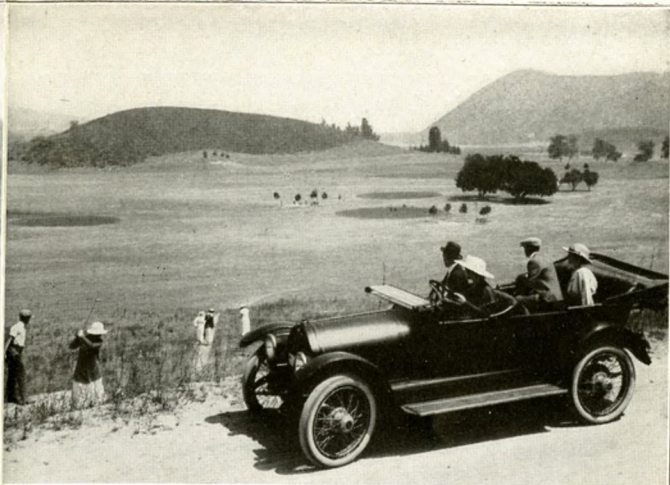
The popularity of golf in America entitles it to mention among the first of outdoor sports. The mild climate which enables golf to be played in California at any time, regardless of the month in the year, has drawn hundreds of eastern players to the Pacific Coast.

There are splendid golf courses scattered up and

down the length of California, from San Francisco and Sacramento southward. Laid out by experts, most of the links are for the full eighteen holes and have grass putting greens. More than thirty country clubs have well-kept grounds, the principal tourist hotels usually maintain their own, and in addition there are several excellent public courses. Notable among these are the municipal golf links at Griffith Park, Los Angeles, and at Lincoln Park, San Francisco.

In a land with such wide diversity of topography it is to be expected that varied conditions of play will be met with, and certainly there is no sameness about golf in California. The links are remarkable for their picturesque surroundings, and the golfer, as he makes his way up and down the undulating courses, finds inspiration in scenery of striking beauty. Some of the fairways are guarded by high mountains, some are encircled by chaparral-clad foothills, and nearly all are studded with the native live-oaks.

New Direct Route to San Diego through Imperial Valley and Carriso Gorge



Answering the call of the foothills
Chariot Race—Pasadena Tournament of Roses

Golf and motoring—an everyday combination in California
The devotee of the chase will here, too, find fox hunting

To indicate the facilities for playing golf in California a list of the principal courses is given below:

Avalon	Santa Catalina Island Golf Club.
Belvedere	Belvedere Golf Club.
Berkeley	Berkeley Country Club
Burlingame	Burlingame Country Club.
Claremont	Indian Hill Golf Club.
Coronado Beach	Coronado Country Club
Del Mar	Stratford Inn Golf Course
Del Monte	Del Monte Golf and Country Club.
Diablo	Del Monte Lodge Golf Course (Carmel Bay).
Escondido	Mount Diablo Park Club
Fresno	Escondido Country Club
Gilroy	Sunnyside Country Club
La Jolla	Gilroy Golf and Pleasure Club.
Lake Tahoe	La Jolla Country Club.
Long Beach	Tahoe Tavern Golf Club.
Los Angeles	Virginia Country Club.
Menlo Park	Los Angeles Country Club (Beverly Hills).
Oakland	Griffith Park Golf Club (Municipal Links).
Pasadena	Midwick Country Club (Ramona Acres).
..	Brentwood Country Club (Santa Monica).
..	Menlo Park Country Club.
..	Atherton Golf Club (Atherton).
..	Claremont Country Club.
..	Sequoyah Country Club.
..	Pasadena Country Club.
..	Altadena Country Club (Altadena).
..	Annandale Country Club.
..	Flintridge Country Club.
..	Raymond Hotel Golf Course.

Paso Robles	Paso Robles Golf Club.
Redlands	Redlands Country Club.
Riverside	Victoria Club.
Sacramento	Del Paso Country Club.
San Diego	Sacramento Golf Course (Municipal).
San Francisco	San Diego Country Club
San Gabriel	Point Loma Golf Club.
San Jose	San Francisco Golf and Country Club (Ingleside).
San Mateo	California Golf Club
San Rafael	Presidio Golf Club (Presidio Terrace).
Santa Ana	Lincoln Park Golf Club (Municipal Links)
Santa Barbara	Lakeside Country Club.
Santa Cruz	Lake Merced Golf and Country Club.
Stockton	San Gabriel Valley Country Club.
	San Jose Country Club.
	Beresford Country Club.
	Marin Golf and Country Club.
	Orange County Country Club.
	La Cumbre Golf and Country Club.
	Santa Barbara Country Club (Montecito)
	Santa Cruz Golf and Country Club.
	Stockton Golf and Country Club.

Polo—On Fields That Have an International Reputation

The game of polo has traveled far—from the little frontier states of India all around the world. It began with one-half of a Himalayan village contesting against the other half.



Hotel Ambassador, Los Angeles
Hotel St. Catherine, Santa Catalina Island (Copyright by P. V. Reyes)

Arroyo Seco Bridge, Pasadena
Beach at Avalon, Santa Catalina Island

In its new environment this most strenuous of sports has lost none of its intense spectacular interest. The trim polo ponies play at no mere fox trot, but at runaway speed; their riders are exponents of daredevil skill, known wherever the game is known; and today Coronado is as great a name in the world of polo as Hurlingham or Meadowbrook.

While polo is played in California all the year, Coronado has well been called polo's winter capital. Dozens of eastern and foreign polo players have appeared on Coronado's field, where some of the most exciting of international tournaments have been played.

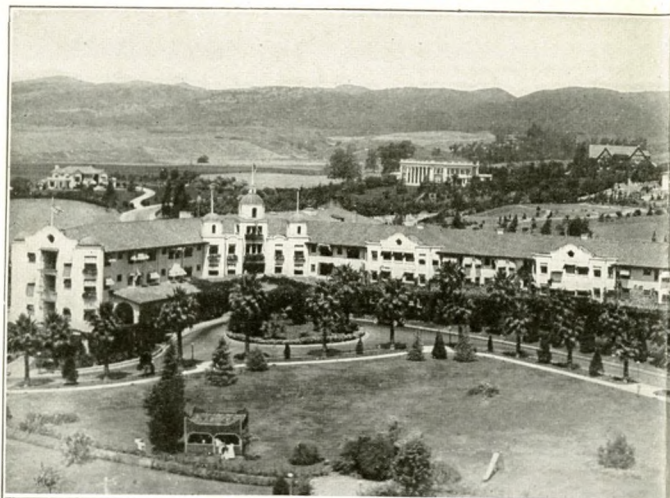
In California the polo game is fostered by six active clubs, all with teams and stabling facilities. Several turf fields have been constructed in the state. The Midwick Country Club of Los Angeles has an excellent field; Riverside has polo grounds at Chemawa Field; the Pasadena Polo Club holds its home contests on the

Midwick Field. Santa Barbara has a field at Robinson Hill. At Hillsborough, fifteen miles south of San Francisco, is El Cerrito Field of the San Mateo Polo Club; at Burlingame, is the Crossway Field of the Burlingame Club, while Hotel Del Monte at Del Monte has a regulation polo field fully equipped where tournaments are held.

Tennis—On Courts Which Have Developed American Champions

Many factors enter into the widespread popularity of tennis in California, of which the favorable climate is perhaps chief. Most of the courts are hard-rolled, so that a speediness of play has been developed which often proves dazzling to racquet wielders from other lands who are accustomed to tennis of a more leisurely sort. Almost all the country clubs maintain excellent courts and there are numerous organizations devoted exclusively to the game. All of the resort hotels have

"Comfort and Courtesy" are your fellow travelers on the "Golden State Limited"



Beverly Hills Hotel near Los Angeles
Hotel Virginia at Long Beach

Stratford Inn at Del Mar (Photo by Pulnam & Valentine)
A Beverly Hills Bungalow

their own courts. The various public parks also are well provided with facilities for this popular sport.

Motoring in California Means the Best of Roads through Nature's Pictureland

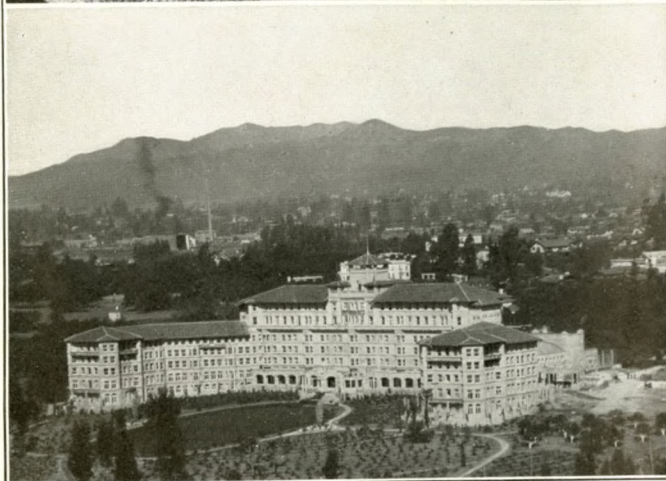
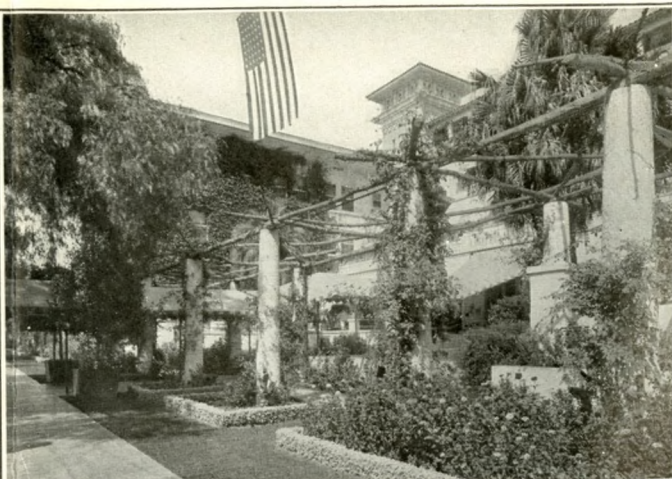
The paved highways of California deserve the wide renown which they have attained. Their generally excellent condition throughout all seasons brings the touring car into constant service, and many easterners ship their automobiles to California every year to enjoy scenic trips along these perfect roads.

California's automobile association issues attractive booklets and maps, which, together with the system of sign-posting throughout the state, serve to guide the motorist in the right direction.

Certain highways and boulevards demand special mention; most celebrated of all is El Camino Real, "The Highway of the King," that historic pathway of

the padres which leads northward up the coast from San Diego, through Los Angeles, Santa Barbara, and San Francisco, thence, across the Bay, continuing to Sonoma. Along this route there stand today nineteen venerable Franciscan Missions, reminiscent of the old romantic days of Spanish occupation. These missions were erected "a day's journey apart," and the friars made their tedious way along the foot-trail which today is supplanted by the paved highway followed by the autoist in his modern touring car.

For many miles from San Diego north, El Camino Real closely follows the ocean shore, passing the picturesque and partly restored ruins of San Juan Capistrano Mission. It also includes the stretch of coast highway between Ventura and Santa Barbara, site of the Mission Santa Barbara, with its Forbidden Garden and ancient burying ground—one of the best preserved of the old missions.



Hotel Green, Pasadena (Photo by Harold A. Parker)
Hotel Huntington, Pasadena

Maryland Hotel, Pasadena (Photo by Harold A. Parker)
Raymond Hotel, Pasadena

South of San Luis Obispo the motorist can leave the highway and drive at top speed for seventeen miles along El Pizmo Beach, a natural boulevard of sand rolled and beaten hard by the surf.

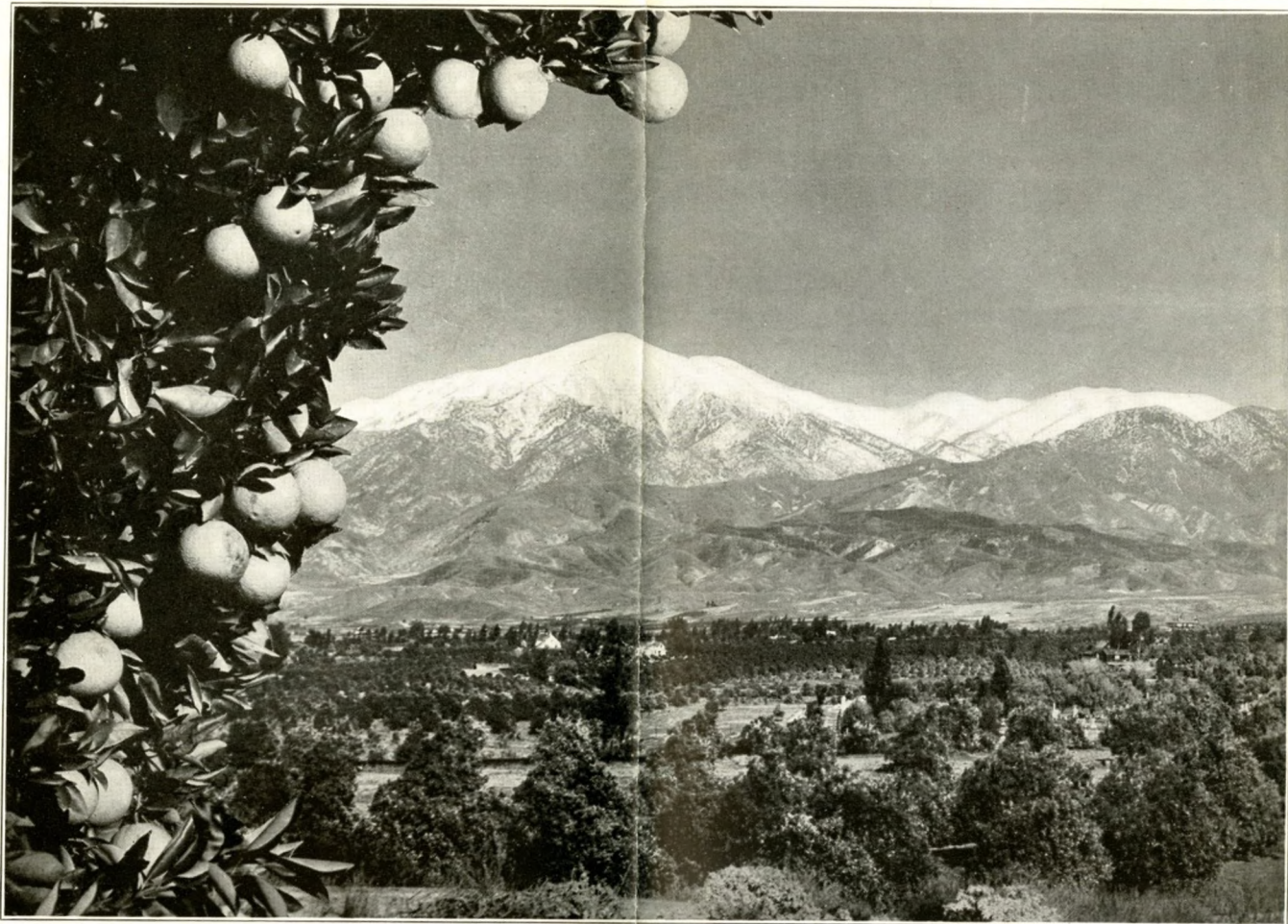
Los Angeles is known everywhere for its well paved boulevards and highways. One of the finest is Wilshire Boulevard, lined with handsome residences. Others are the Hollywood, Sunset, Santa Monica, and Long Beach drives, the Huntington Drive into Pasadena, the Beach Drive which leads for miles along the foaming surf-line, the Topanga Canyon road through the Santa Monica Mountains, and the Griffith Park Drive through one of the natural beauty spots of the southland. Victoria and Magnolia avenues are the principal boulevards of Riverside, and another winds to the summit of Mount Rubidoux, overlooking the Santa Ana Valley. Redlands, among the orange groves, has its drive through Smiley Heights; and around San

Diego there is a fine system of roads, among them that to Point Loma and La Jolla, as well as the scenic road penetrating the Cuyamaca Mountains to the east. Around Santa Barbara are many mountain roads, through the Santa Ynez Range, affording attractive coast and ocean views.

In the Monterey Bay region the Seventeen-Mile Drive leads out from Del Monte, circling a peninsula along white sand beaches and rocky headlands, and passing contorted cypress trees, close relatives of the Cedars of Lebanon. Santa Cruz, on the northern shore of Monterey Bay, has its Cliff Drive, as well as the drive to the Santa Cruz Big Trees, six miles away.

San Francisco has many paved auto boulevards—among them the Marina; the Great Highway, skirting the Ocean Beach; the Presidio Parkway; Twin Peaks Boulevard, with its sweeping vista of the entire city and surroundings; and the Panhandle, which leads to

"Golden State" Route—Only 1764 miles, 54 hours—Kansas City—Los Angeles



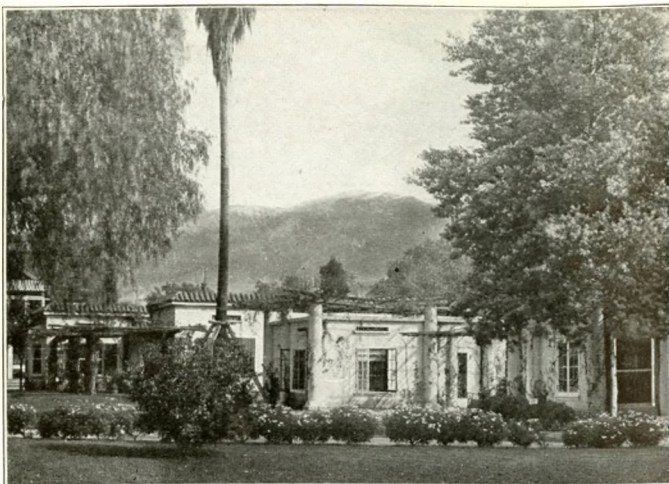
The Orange Belt: Looking across an orange grove. Snow-clad Mount Baldy in the background

the tree-shaded drives through Golden Gate Park. Down the peninsula there are delightful drives to Half Moon Bay, Crystal Springs Lakes, La Honda, and Pescadero, a circuit of nearly one hundred miles, while farther south are the broad, smooth roads of the Santa Clara Valley. Across the Bay, from Oakland and Berkeley, radiate highways such as the Skyline Boulevard; the Tunnel Road through Temescal Canyon into the San Ramon Valley; the Foothill Boulevard through San Leandro to Hayward, thence along the Dublin Canyon road to Livermore, returning through Sunol and the Niles Canyon. The Lake Shore Boulevard skirts Lake Merritt in Oakland, and passes through Indian Gulch and Piedmont to Redwood Canyon; the Highland Drive extends through Rockridge Park, Claremont, and Berkeley Heights.

The hills of Marin County and its shore line—across the Golden Gate from San Francisco—offer an enjoy-

able tour from Sausalito over the State Highway, by way of Mill Valley and San Anselmo to San Rafael. Thence east to Mt. Tamalpais, which dominates this region, to Point Reyes at the southern end of Tomales Bay, and past Point Reyes lighthouse to picturesque and historical Drake's Bay. Return can be made over the Cliff Road by way of Muir Woods National Monument.

Interesting scenic drives are those to Mount Wilson in the Sierra Madre Mountains, a few miles north of Los Angeles; the foothill boulevard skirting the Sierra Madre Range, reached from Los Angeles through Pasadena; Mount Hamilton, site of the Lick Observatory, and reached from San Jose; and Mount Diablo, the guardian peak twenty-five miles east of Oakland, overlooking the San Francisco Bay region.



Bungalow life in California has a special charm

(Photos by Harold A. Parker)

Yachting and Boating, where Ripping Breezes Blow

Viewed from the ocean, California discloses a varied beauty; there is a succession of lofty headlands, and the coast ranges rise 2,000 to 7,000 feet above the sea. Fair-weather cruises may be taken up and down this shore and around the near-by island groups. In the harbors, large and small, that break into the California coastline, are moored many fleets of pleasure craft.

In the sheltered waters of San Diego Bay, sailing conditions are well-nigh perfect. Several yacht and rowing clubs make their headquarters here. Only twenty miles southwestward, across the main sea, rise the rocky-peaked islands known as Los Coronados, circled about by calm pellucid waters and a great game-fishing ground.

At Los Angeles Harbor the boating activities are carried on chiefly from Terminal Island, where there

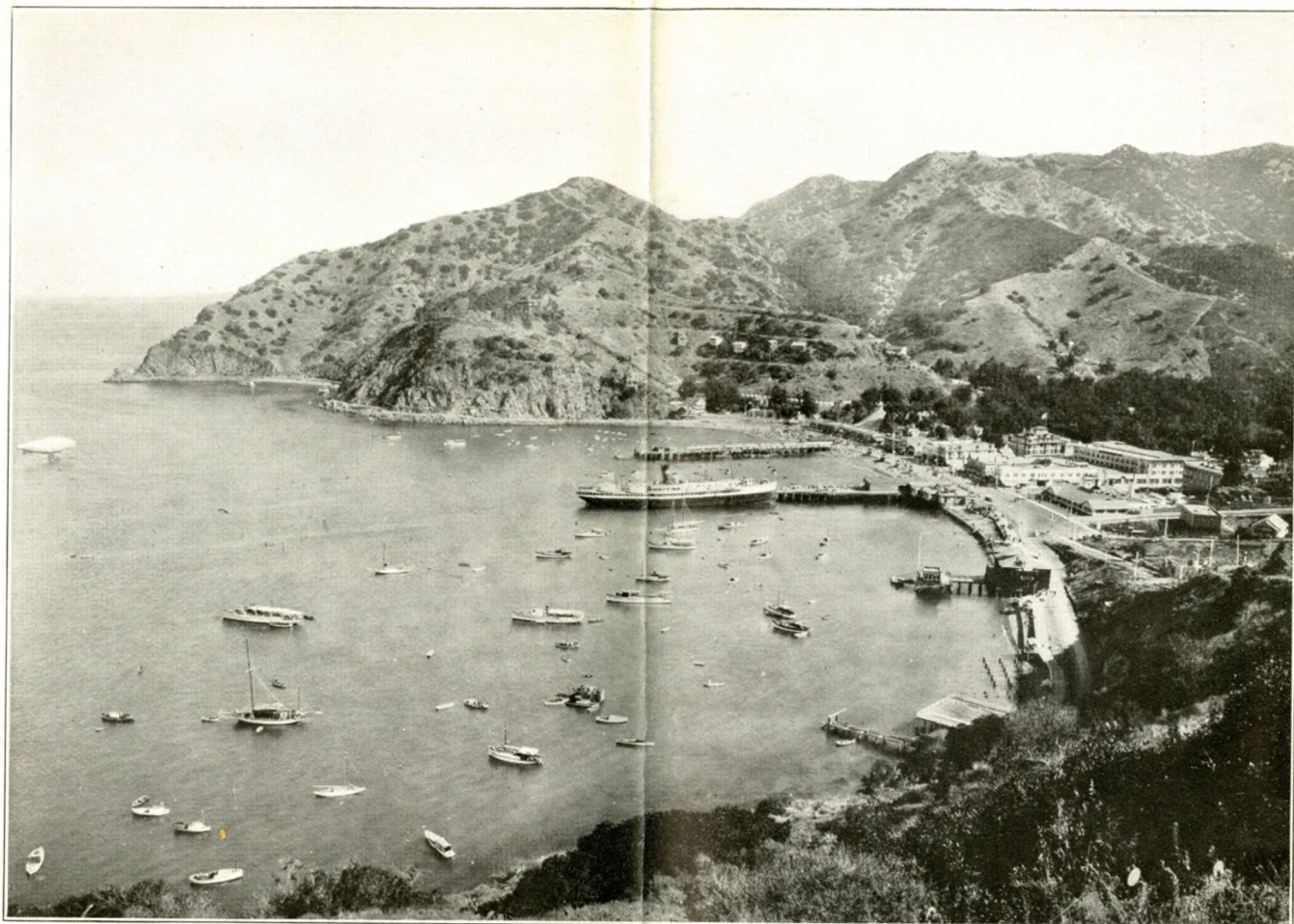
is a prominent yacht club. Santa Catalina Island is reached from here by steamer. Yachtsmen and lovers of boating find Avalon Bay at Catalina, with its smooth calm waters, ideal for all aquatic sports. Long Beach is another favorite anchorage ground. Newport Bay, also, has many pleasure craft.

From Santa Barbara motor boats and yachts cruise to the picturesque isles which bound the channel on the south—San Miguel, Santa Rosa, Santa Cruz, and Anacapa, with their caves, grottoes, and strange formations.

Farther north on Monterey Bay yachting centers about Santa Cruz and Monterey.

The Bay of San Francisco affords a yachting course almost 500 square miles in extent. On its shores at Sausalito, Tiburon, Alameda, and Alviso are attractive club houses, and in San Francisco the home ports of the yachtsmen are at Black Point Cove and the Yacht Harbor on the Marina.

"Golden State Limited" Meals—the best on Wheels



Bay of Avalon, Catalina Island

(Copyright by P. V. Reyes)

Bathing—Where the Pacific's Surf Rolls in upon Its Golden Strand

On California's coastline are numerous wide beaches where many attractive resorts are sought by throngs who combine refreshing dips in the ocean with the pleasant diversions of the seaside.

In their development as pleasure resorts the Los Angeles beaches stand among the foremost. They began as places for surf-bathing, and though they now present a host of other amusement features, their original character has been maintained.

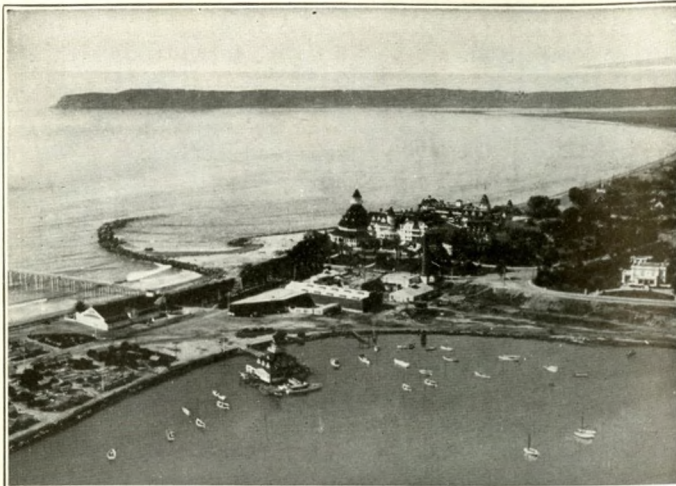
The principal seaside resorts in this region are at Santa Monica, Ocean Park, Venice, Redondo Beach, Long Beach, Hermosa Beach, Huntington Beach, Newport Beach, Balboa, and Seal Beach. All of them are quickly reached from Los Angeles by electric cars, railway or automobile. Surf bathing is one of the

attractions of Catalina Island, across the Channel from Los Angeles Harbor. Farther south is the crescent beach at Del Mar, and across the Bay from San Diego is the celebrated all-year resort—Coronado Beach.

On the coast line north of Los Angeles the bathing beach at Santa Barbara is particularly favored in climate and gentle surf. The attractive Miramar bathing beach at Montecito is in the same vicinity, while the Atascadero Beach on Morro Bay is farther up the coast near San Luis Obispo.

In the Saddle along Sunlit Bridle-Paths

The equestrian may take many enjoyable rides through picturesque valleys and the foothills of snow-capped mountains. Horseback riding is invariably popular, and the large hotels all maintain stables of saddle horses for the use of their patrons.



Aeroplane view of Hotel del Coronado, across the bay from San Diego
(Photo by Harold A. Taylor)

Beach at La Jolla near San Diego

Panorama of San Diego, the Bay, Point Loma, and the Pacific Ocean

The Old Franciscan Missions Add Romance and Charm to Your California Visit

For convenient reference a list is here given of their locations and dates of founding:

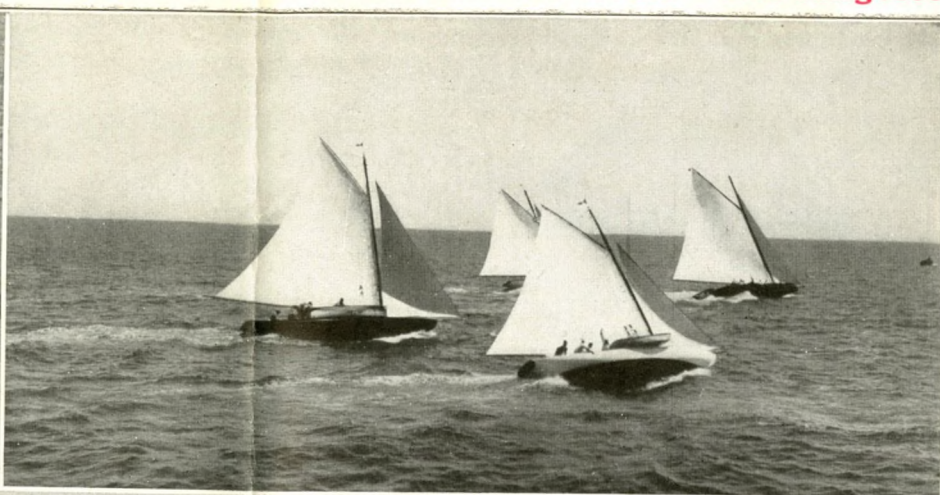
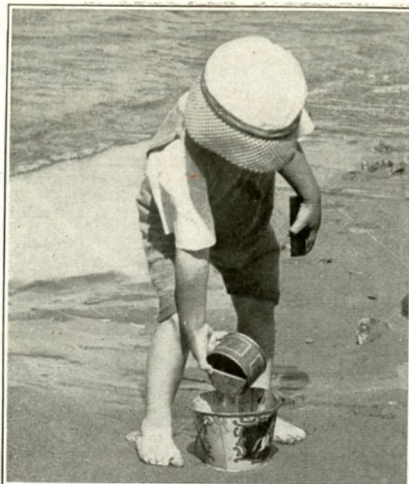
Name	Founded	Location
San Diego de Alcalá	July 16, 1769	San Diego
San Carlos Mission Chapel	June 3, 1770	Monterey
San Carlos del Carmelo	July 10, 1771	Carmel
San Antonio de Padua	July 14, 1771	King City
San Gabriel Arcangel	Sept. 8, 1771	San Gabriel
San Luis Obispo de Tolosa	Sept. 1, 1772	San Luis Obispo
San Francisco d'Assisi	Oct. 9, 1776	San Francisco
San Juan Capistrano	Nov. 1, 1776	Capistrano
Santa Clara	Jan. 12, 1777	Santa Clara
San Buenaventura	Mar. 31, 1782	Ventura
Santa Barbara	Dec. 4, 1786	Santa Barbara
La Purisima Concepcion	Dec. 8, 1787	Lompoc
Santa Cruz	Sept. 25, 1791	Santa Cruz
Nuestra Senora de la Soledad	Oct. 9, 1791	Soledad
Mission San Jose	June 11, 1797	Irvington
San Juan Bautista	June 24, 1797	Sargent
San Miguel	July 25, 1797	San Miguel
San Fernando Rey de España	Sept. 8, 1797	San Fernando
San Luis Rey de Francis	June 13, 1798	Oceanside
Santa Ynez	Sept. 17, 1804	Gaviota
San Rafael Arcangel	Dec. 14, 1817	San Rafael
San Francisco de Solano	July 4, 1823	Sonoma

Resort Regions

Los Angeles and Vicinity.

Los Angeles is renowned as the tourist center of Southern California, and, as its metropolis, is the heart of its activities. The first settlement was made by Spaniards in 1781. Built upon the plains sloping seaward from the foothills of the Sierra Madre, its northern and western suburbs reach altitudes affording inspiring views of surrounding valleys with the ocean in the distance. The business district of Los Angeles, with its many handsome shops and modern buildings, is striking, and the throngs who all the year visit for a season or pass through this gateway find ample hotel accommodations. There are a number of very good hotels that are popular with travelers. The expense of living may be whatever the tourist can afford. For those who prefer them, furnished apartments and bungalows are available at reasonable prices. Los Angeles also has its Chinatown, and other foreign sections, entertaining because of their novelty. Within the city limits there are

"Golden State" Route—Only 2060 miles, 65 hours—St. Louis—Los Angeles



A little California "Sand Dab"
Trailing a "water nymph"

They're off! Let the best boat win
Where the deep sea gives up its gamest fish

twenty-one parks, and these, together with the many tree-shaded boulevards and avenues lined with villa homes set amidst greenery and bright blossoms, go far to charm eastern visitors and induce their frequent return.

At any time of the year the Los Angeles region appeals alike to visitor and resident, but particularly so during the winter and spring months, when Nature is verdure-clad and orange trees are aglow with golden fruit.

Los Angeles is especially favored in its location—between the mountains and the sea—a region of pleasantly diversified landscape, with broad valleys, snow-capped peaks and magnificent stretches of smooth beach. There are picturesque old Franciscan missions, orange groves, vineyards and orchards, cozy bungalow homes and the villas of the affluent, all in a setting of palms and vines and flowers.

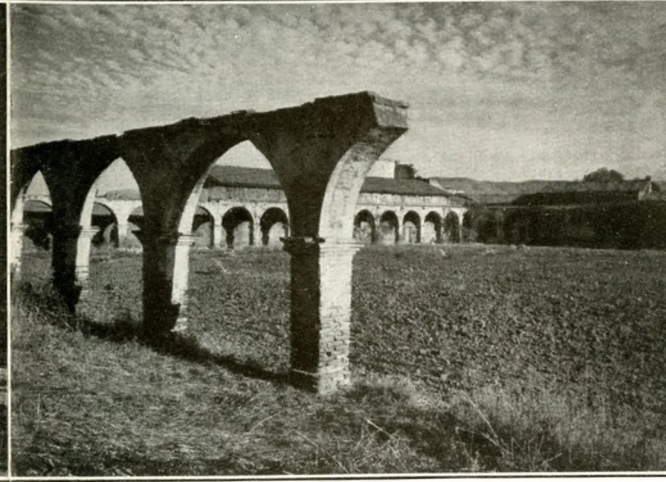
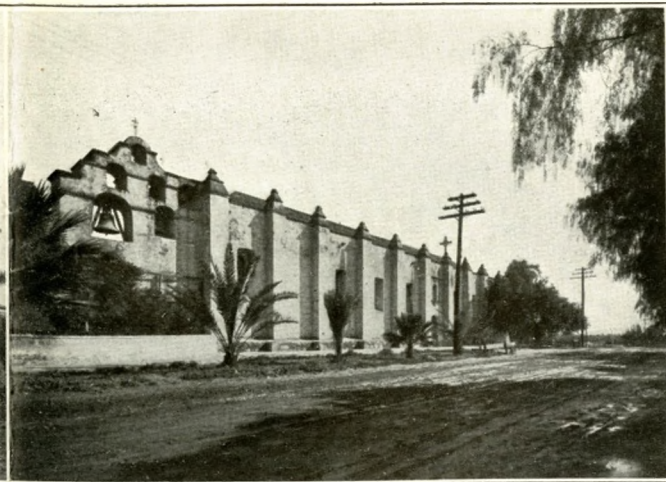
About Los Angeles are no fewer than fifty cities and towns, with attractions that hold the visitor, and all are reached by a network of trolley and rail lines, and splendid auto boulevards.

Hollywood is one of the attractive residence sections of the

city. A few miles west, in the foothills of the Santa Monica Mountains, on the main boulevard leading to the sea, is Beverly Hills Hotel and Bungalows, set in a semi-tropic park of sixteen acres. All the outdoor sports may be enjoyed there the year 'round. Horseback riding is very popular and the hotel maintains a stable of fine horses, as well as ponies for children. Winding bridle paths lead from the hotel grounds into charming canyons, but a few minutes' ride.

Within a short distance of Los Angeles and quickly reached by automobile or trolley cars, are many motion picture studios where the stars of the "movie" world may frequently be seen at work. They offer an unusual attraction to tourists, some of the studios being open to the public.

Seaside resorts near Los Angeles. Within a short ride by Pacific Electric Railway west from Los Angeles are numerous resorts by the sea which offer opportunities for enjoyment in their various attractions. They are widely known as the Los Angeles Beaches. Santa Monica, Ocean Park, and Venice join boundaries in a continuous stretch of several miles of bathing



Mission San Diego—"Where California Began"
Mission Santa Barbara at Santa Barbara

Mission San Gabriel—Near Los Angeles
Mission San Juan Capistrano, between Los Angeles and San Diego

beaches. Santa Monica is an attractive home city, backed by the Santa Monica Mountains. Redondo Beach follows.

Long Beach. Twenty-two miles south from Los Angeles and quickly reached by Pacific Electric Railway, is Long Beach with fourteen miles of sandy beach swept by the rolling surf of the Pacific. Added to its splendid bathing facilities and its numerous seaside pleasures and places of entertainment, is its attractiveness as a commercial and residence city. The Hotel Virginia facing the beach and open the year round provides all modern luxuries and conveniences, with excellent service, and there are many other hotels and comfortable stopping places for families.

Hermosa, Huntington, Newport, Balboa, and Seal beaches join to the south. At all of these resorts are many amusement features, and in addition to the surf bathing there are bathing pavilions and swimming pools. To the south also lie San Pedro and Los Angeles Harbor, the latter the port of departure of the steamer for the Magic Isle of Santa Catalina.

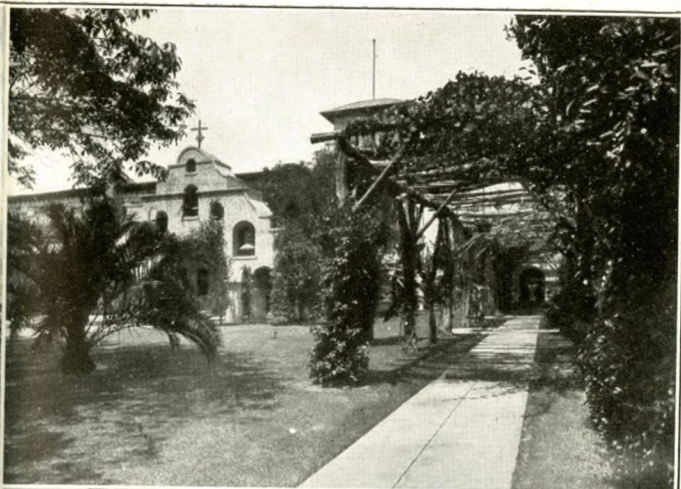
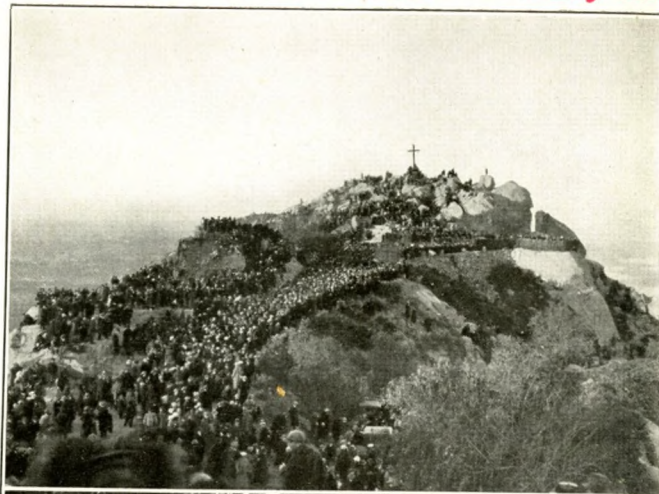
Pasadena. Among the famous inland resort cities nearest to Los Angeles is Pasadena, charmingly situated in the San

Gabriel Valley. It has many palm-bordered avenues and sumptuous homes. Pasadena entertains a large crowd of eastern visitors within her gates during the winter season and is well prepared to receive them. Its principal resort hotels are the Huntington, Raymond, and Green, open during the winter season only, and the Maryland, which is open all the year.

Orange groves skirt the foothills of the Sierra Madre Range to the north. Above its skyline rise Mount Lowe and Mount Wilson, the former reached from Los Angeles and Pasadena by a scenic trolley trip through a highland region of rare beauty. The way leads past Altadena to Rubio Canyon, whence the passenger is carried up the famous incline to Echo Mountain and from there another trolley line runs to Alpine Tavern, nestling in a mountain-side ravine. A trail leads to the summit of Mount Lowe, 1,000 feet higher. On the summit of Mount Wilson is a great astronomical observatory, which contains the largest telescope in the world. It is reached by motor road or trail from the town of Sierra Madre.

Pasadena is particularly attractive to the eastern visitor

“Golden State Limited” — Only through Sleeper Chicago-Santa Barbara



Easter Sunrise Service—Rubidoux Mountain, Riverside
View from Smiley Heights, Redlands

Glenwood Mission Inn, Riverside
Palm Springs

because of the wealth of semi-tropic trees and its flowers. This luxuriant growth has made famous its Tournament of Roses on New Year's Day—an annual attraction at Pasadena. Its Sunken Gardens are of unfailling interest to sightseers.

San Gabriel, with its old Mission San Gabriel and Spanish relics, is an interesting little town ten miles east of Los Angeles. The Mission, which was founded in 1771, and the fifth one established in California, is well preserved, services being held regularly. It is of unfailling interest to the visitor.

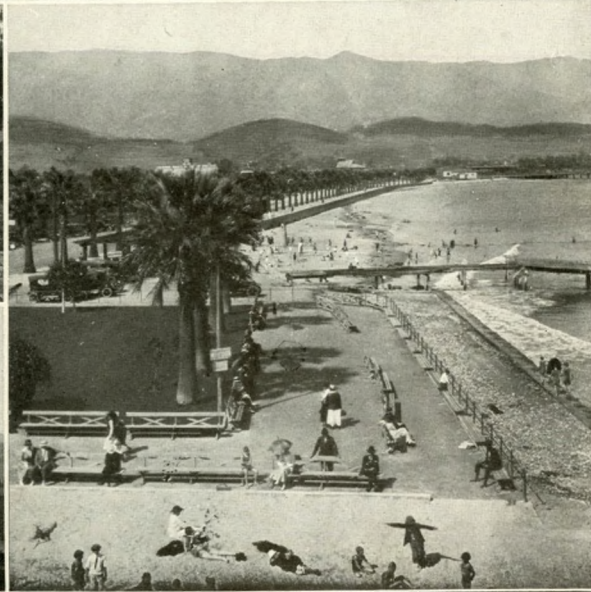
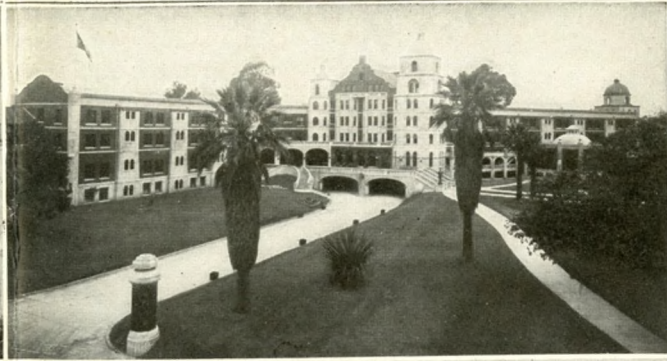
Riverside has a very unique hotel in the Glenwood Mission Inn, well known to pleasure travelers. The romantic history of early days is well preserved in its construction and furnishings. It is a modern hotel, combining the picturesqueness of the eighteenth century with the luxury of the twentieth. It is a cloistered building with tiled roof, arched porches, many a gable and built around a spacious court. The tower is a campanile, with twelve ancient bells, where vesper hymns and old Spanish tunes are played. The Inn is open all the year.

Surrounding Riverside are miles of auto drives lined with tall eucalyptus, drooping pepper and magnolia trees. Mansion homes are seen through palm, orange, and cypress.

Above Riverside rises Mount Rubidoux, surmounted by a cross dedicated to Padre Junipero Serra, founder of the missions. The annual Easter service which is held on the Mount has become well established as a pilgrimage joined in by both residents and visitors.

San Bernardino. San Bernardino is in the eastern section of the orange belt and may be included with the others mentioned in daily excursions by rail or auto from Los Angeles. To the north are the San Bernardino Mountains, from which the city gets its name, rising to a height of 5,000 to 11,000 feet, where lie Big Bear and Arrowhead Lakes surrounded by beautifully timbered shores.

Through this mountain region during summer and autumn can be made the scenic auto-stage trip known as the "101 Mile Drive on The Rim of The World."



The Samarkand
El Encanto
El Mirasol

Scenes at Santa Barbara

Hotel Arlington
The Plaza del Mar and Beach

Redlands. Redlands is a beautiful city at the foot of Mount San Bernardino, and within sight of Mounts San Geronio and San Jacinto. It is surrounded by orange groves and has many charming residences in park-like settings. Its chief show place is Canyon Crest Park, or Smiley Heights, noted for its floral display and wide outlook on mountains and valleys.

Santa Barbara. On the coast north of Los Angeles and with its shoreline facing directly to the south, is Santa Barbara. Its mild climate, attractive situation and surroundings have placed it among California's best known winter resorts. From the sloping foothills of the towering Santa Ynez Range the city looks seaward over the blue waters of the channel. Many fine winter homes have been established in Santa Barbara, and its avenues of residences, its flower gardens, and semi-tropical plants and trees charm the visitor. There is a pier, a bathing beach, and a large indoor salt water swimming tank. Horseback riding is a popular pastime, the numerous trails through the foothills and into the mountains offering inviting trips.

A Spanish settlement and presidio were established here in 1782 by Ortega, the present city dating from 1851. About it all there is an atmosphere of centuries gone by, and many relics of the early days still remain, chief among them the old Mission Santa Barbara, founded in 1786.

Seen upon the horizon across the channel are a group of islands, the largest being Santa Cruz, Santa Rosa, and San Miguel, the latter the burial place of the Spanish explorer Rodriguez Cabrillo, who there died on January 4, 1543. The islands, with their mystery and romance, are reached by launch and have many points of interest.

Santa Barbara has several luxurious hotels, and others which give good service—all open the year round.

The Arlington is a striking structure designed and furnished throughout in Spanish mission style. It is about a mile up-town, its grounds facing on State Street just beyond the business section. One wing includes the site of the "Old Arlington."



A highly developed California Oil Field

The bungalow-hotel, El Mirasol (The Sunflower) faces on Alameda Park and occupies an entire block. The main building in Spanish style is beautiful in its interior fittings. Its patio, opening from the lobby, forms a court centered by a marble fountain. Beyond is a park surrounded by vineclad bungalows.

El Encanto (Enchantment) is also a bungalow-hotel, built on the crest of Mission Ridge 500 feet above the sea, commanding a wide view of city and surroundings. Its cottages are finely fitted with all conveniences and tasteful in their appointments.

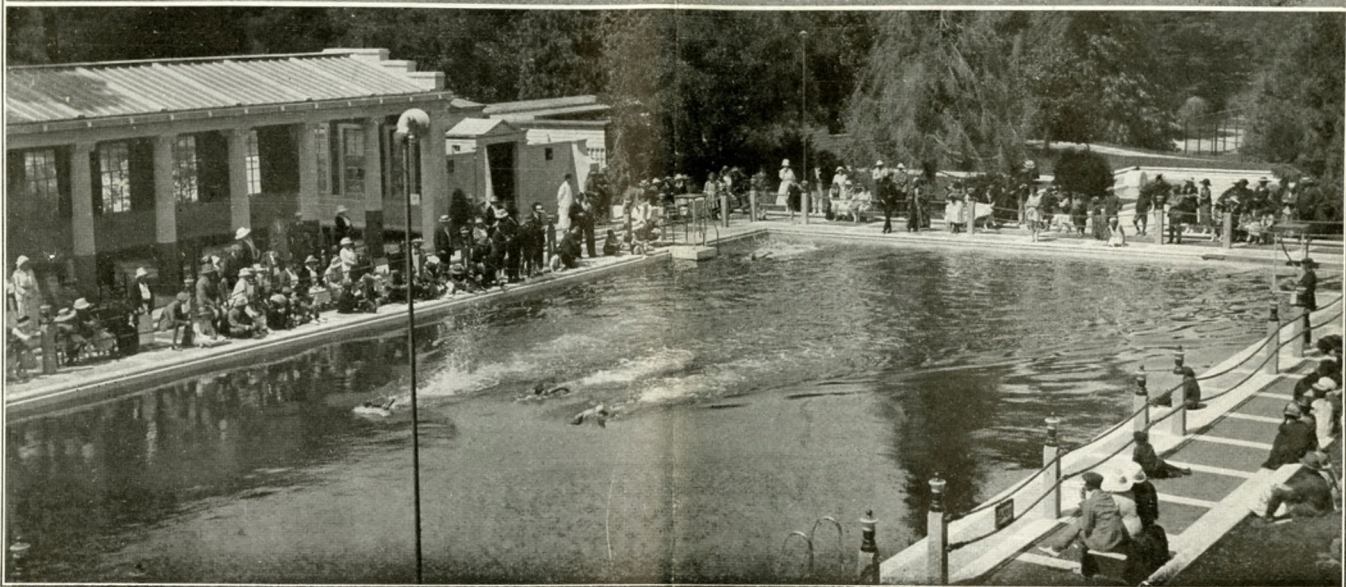
The Samarkand, in Persian style, has been added to Santa Barbara's tourist hotels. It is unique in its construction and furnishings, and provides excellent service.

Montecito. Four miles south of Santa Barbara is Montecito, bordering on the sea. It contains many mansions and bungalows amid foliage and landscape gardens. Here also is Miramar, a bungalow-hotel with cozy cottages surrounded by lawns, flowers, and trees. Its bathing beach is most attractive.

Santa Catalina Island. Avalon, on the island of Santa Catalina, twenty-six miles from the mainland, is reached from San Pedro (Los Angeles Harbor) by a steamer trip of two hours across the channel. Avalon Bay sweeps in a graceful curve and, in approaching it, the view of the sprightly resort village with its mountain background is one of the most novel on the coast.

The first authentic record of Catalina shows that it was discovered by Captain Juan Rodriguez Cabrillo in 1542, a Portuguese navigator in Spanish service.

This fascinating island is twenty-two miles long and varies from a quarter of a mile to seven and one-half miles in width, a region of mountains, circling bays, lofty cliffs, canyons and smooth beaches. Protected from the strong ocean winds by the Island Mountains, Avalon, which is situated on the landward side, is quite free from fog, resulting in a very mild winter climate. For the lover of hiking, mountain climbing or horse-back riding there are many enjoyable trips into the heart of



Hotel Del Monte at Del Monte
The Roman Plunge in the Del Monte grounds

the island, where are old Indian village sites, mountain peaks (Mount Orizaba rising to an elevation of 2,109 feet), coves; little valleys and trails. Both the golf links and the tennis courts are only a short distance from the center of Avalon. Catalina is a fisherman's paradise at all seasons. Nowhere else can be found so many varieties of giant game fish.

One of the chief attractions of the island is the Marine Gardens. The gorgeous coloring; the green, gold, blue, and purple fish floating and darting over shell-encrusted rocks or lurking in the waving fronds of giant seaplants, are plainly visible through the glass-bottomed boats.

Throughout the years this island has grown from an almost unknown spot to one whose fame has become world-wide as an all-year playground.

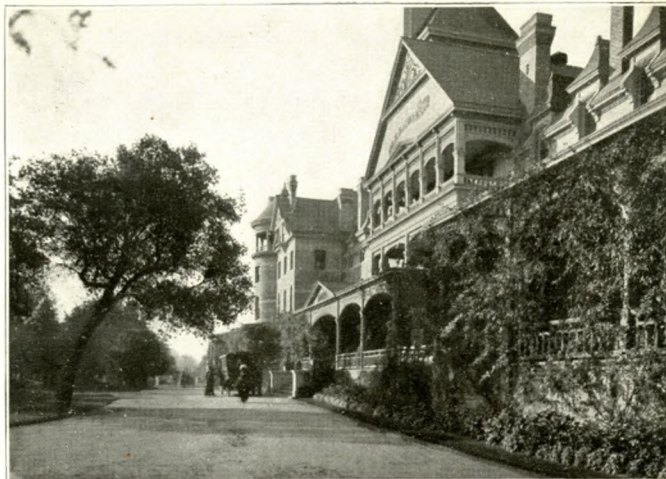
The new St. Catherine Hotel stands upon the shores of a little bay directly west of Avalon. Here visitors are provided with excellent service. In the village are other hotels and cottages.

San Juan Capistrano. In a quaint village, on the main

highway leading south from Los Angeles, where a fertile valley slopes from a mountain wall to the sea, is located the Mission of San Juan Capistrano, founded November 1, 1776. The Mission dominates the valley. Go where you will, the eye turns to this colossal fragment, a forlorn but vital thing; broken, crushed, yet undying. Visitors will find it of unusual interest.

Oceanside. Between Los Angeles and San Diego, overlooking the Pacific, is Oceanside. One of the chief attractions of this locality is San Luis Rey Mission, founded in 1798. This ancient monument has been restored to its original lines, and with one exception, is the largest of the old missions. Another near-by point of interest is Guajome Ranch, the scene of the events depicted in Helen Hunt Jackson's novel, "Ramona."

Del Mar. A few miles north of San Diego, facing the ocean, with a background of hills and valleys, is Del Mar with its delightful Stratford Inn. The Inn is situated on a hillside sloping toward the sea and broken by deep erosions which run down to the face of a steep cliff, at the base of which is a bathing



Hotel Paso del Robles, at Paso Robles Hot Springs
Byron Hot Springs Hotel

Del Monte Lodge on Pebble Beach, Carmel Bay
A Monterey cypress

beach—wide, and hard enough to drive upon. There are groves of indigenous pine trees of rare variety, and thousands of large eucalyptus and acacias. For those who care for out-of-door sports, there are bathing (either in the surf or in hot or cold plunges), golf, tennis, boating, and fishing. One may ride horseback or motor through diversified scenery. To the eastward, and on the north side of the San Dieguito Valley, lies San Pasqual, where was fought the last battle of the Mexican War, the result of which gave California to the United States. Stratford Inn and cottages are open all the year.

San Diego. San Diego, "where California began," is the southernmost city on the Pacific Coast. It was here that Padre Junipero Serra, on July 16, 1769, founded the first of the California missions—the Mission San Diego de Alcalá.

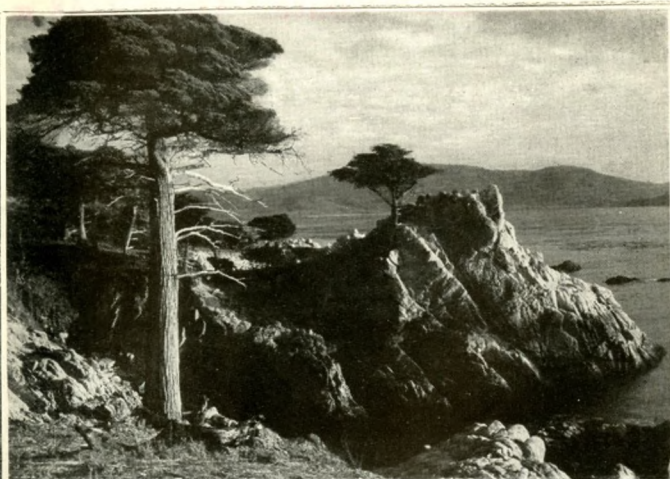
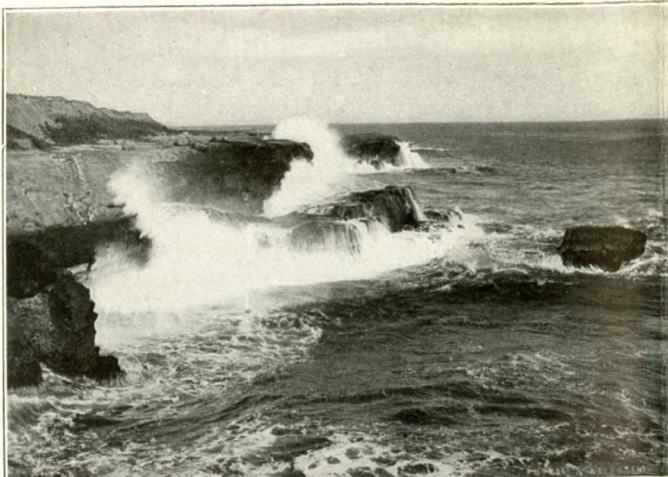
Here, too, the Stars and Stripes were first raised in California, and here now are found land, water, and air activities of almost every branch of the national military service.

As the birthplace of California, San Diego is particularly rich in historic associations. The old mission; the hundred-year-old palms; the padres' irrigation dam; Presidio Hill; and such romantic reminders as Ramona's Marriage Place—are but examples of what it has to offer.

Situated on the Bay of San Diego, the city is backed on the east by mountain ranges and valleys. On the west, the promontory of Point Loma juts into the sea, overlapping the low, slender peninsula of Coronado, and between the two lies the entrance to the "Harbor of the Sun."

The view from Point Loma embraces ocean, bay, city, and mountains. On the crest of Point Loma is a notable group of buildings—the home of the Universal Brotherhood.

Balboa Park, comprising 1,400 acres, is in the center of the city. It was here that the Panama-California Exposition was held. More than fourteen permanent buildings remain on this beautiful spot. The shrubs, palms, tropical and semi-tropical plants, started prior to the Exposition, now constitute one of the



The breakers on Monterey's rockbound shores
A Santa Clara orchard in its spring dress

(Photos by Gabriel Moulin)

Midway Point on the Seventeen-Mile-Drive, Monterey Bay
Cypress trees on the Seventeen-Mile-Drive

most extensive horticultural displays to be found in the world. The main buildings of the western portion are now occupied by the San Diego Museum. The eastern portion has been given to the United States Government and is used by it as a Naval Training School. The southern portion is occupied by the model Marine Corps Barracks.

A marvelous bit of coast, sixteen miles north and reached by automobile, is La Jolla. Its sea-caves—vast caverns worn in the sandstone cliffs by the action of the waves—are a special attraction. Here are many cottages and modern apartments.

On the south rim of El Cajon Valley (fifteen miles northeast of the city and reached by a motor highway) is Grossmont, a new country residence section, where are located the winter homes of many men and women of note.

San Diego has attractive business streets, shops, and residences. There are several first-class hotels and many apartment houses.

The equable climate makes this region delightful at all seasons.

Coronado Beach. On the peninsula across the Bay, and connected by ferry with San Diego, is one of California's most

avored all-year pleasure places. The Hotel del Coronado, one of the largest and best known of resort hotels, stands upon Coronado's "Silver Strand," and is surrounded by lawns and flowers and tropical verdure. It is built around a patio—a dense garden of rare shrubs and flowering plants—more than an acre in extent.

From the hotel may be seen, upon the one hand, a wide-sweeping mountainous arc, dipping to the pretty city that borders the bay. Upon the other, an outlook over the sea toward the peaks of the distant Coronado Islands.

Near by are polo fields, golf links, and tennis courts. There is deep-sea and pier fishing, yachting, and motor-boating. The bather may choose between surf or warm salt water plunge. Horseback riding is another outdoor amusement. Motoring to neighboring resorts and beaches is a favorite pastime.

On North Island—really a part of Coronado peninsula and comprising 1,200 acres in San Diego Bay—is located the United States Army and Navy Schools of Aviation.

"Golden State" Route—Only 2248 miles, 69¼ hours—Chicago—San Diego



On the Golf Course at Del Monte

The San Diego Short Line through the Imperial Valley and Carriso Gorge

El Centro, in the Imperial Valley—likened to the Valley of the Nile—provides in its Barbara Worth Hotel, a well appointed stopping place for those desiring a temperate winter climate. The new line of the San Diego & Arizona Railroad—the scenic Carriso Gorge Route—connects with the Southern Pacific at El Centro, and in conjunction with the Golden State Route forms the shortest line from Chicago to San Diego, with through Pullman sleeping car service.

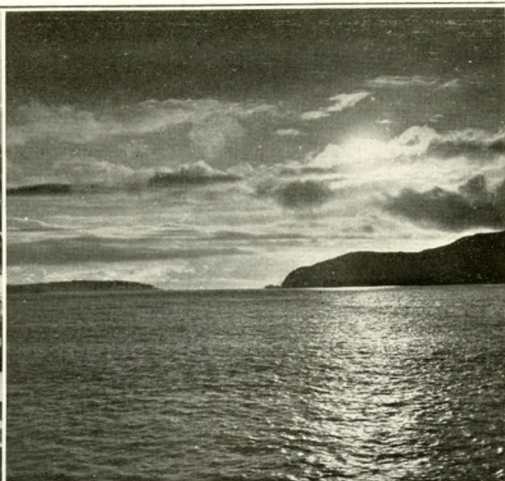
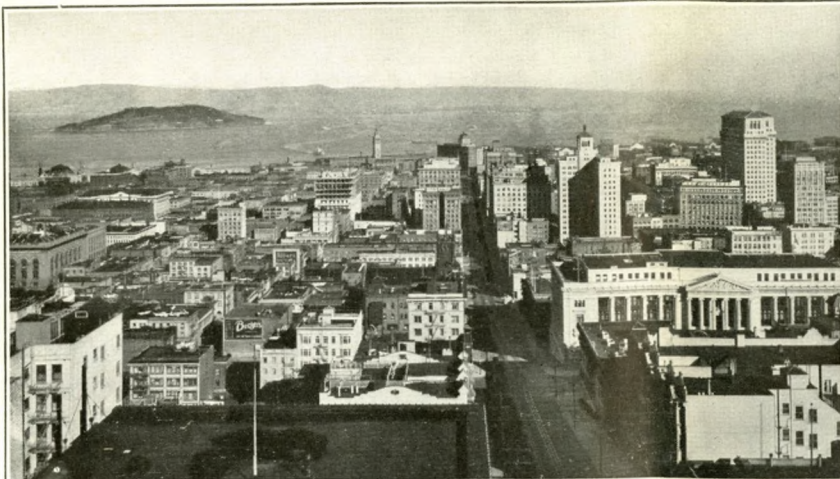
San Francisco and Vicinity.

San Francisco delights the traveler with many distinctive charms. It is a cosmopolitan city, picturesquely set upon many hills on the northern end of a peninsula overlooking the mountain-rimmed Bay of San Francisco on the east and north, and the Pacific Ocean on the west—the famed Golden Gate joining them by its mile-wide passage. San Francisco's beauty of situation marks it as one of the favored cities of the world. The views from Telegraph Hill, Russian Hill, Nob Hill, Sutro Heights, and many other vantage points

within city limits draw one again and again; while the outlook from Twin Peaks, the two cones to the southwest reached by auto boulevard, unfolds a bird's-eye view of city and surroundings.

There is a snappy breeze from the sea. In its climate San Francisco reverses the ordinarily accepted seasonal conditions; in winter it is spring-like, and in summer it is delightfully cool. It is one of the most interesting of seaports.

Its shops, its theaters, its many bohemian restaurants and cafes; Chinatown with its quaint oriental community and gorgeous bazaars, and the Latin quarter—all have their particular interest. Market Street, leading from the Ferry Building, is the main artery of the city—the Broadway of San Francisco—and there are many diverging business streets in the downtown section. The several inviting residence districts, the notable mansions, the Civic Center, museums, art galleries and monuments; the Presidio, Mission Dolores, Portsmouth Square, and other historic landmarks; the waterfront or *Embarcadero*, picturesque Fisherman's Wharf, Ocean Beach, Seal Rocks, and the Cliff House—all these attract the visitor. The Palace of Fine Arts contains many art treasures, and remains today a



Looking across the Bay
Ocean Beach from Sutro Heights

San Francisco Scenes

The Golden Gate
Rhododendrons in Golden Gate Park

nortworthy example of the superb structures of the Panama-Pacific International Exposition of 1915.

Golden Gate Park is one of the famous parks of the world. It is four miles long and a half mile to a mile wide, with its western edge touching the ocean. It is an achievement in landscape gardening. Hundreds of varieties of plant life, from every foreign land, flourish, while beds of richly colored flowers bloom throughout the year. Miles of driveways and bridle-paths lead in every direction. It is the center of the city's outdoor life and there is scarcely a sport that is not provided for by ample grounds and facilities.

San Francisco has numerous first-class hotels besides many comfortable apartment houses, with ample accommodations to care for all visitors at prices to suit every purse.

The islands in San Francisco Bay include Mare Island, where is located the United States Navy Yard, and Yerba Buena, or Goat Island, site of the Government Naval Training Station.

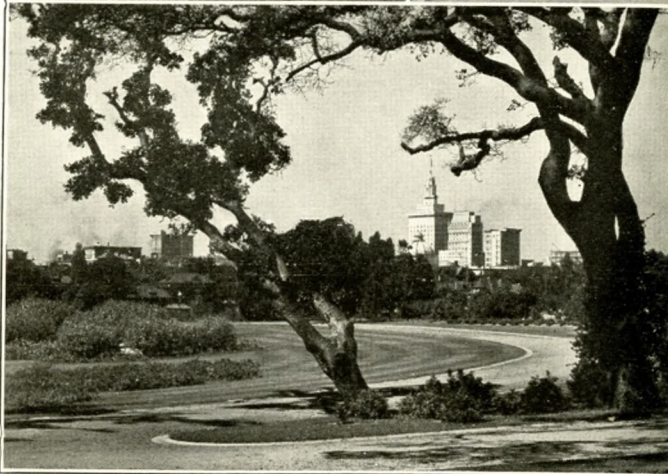
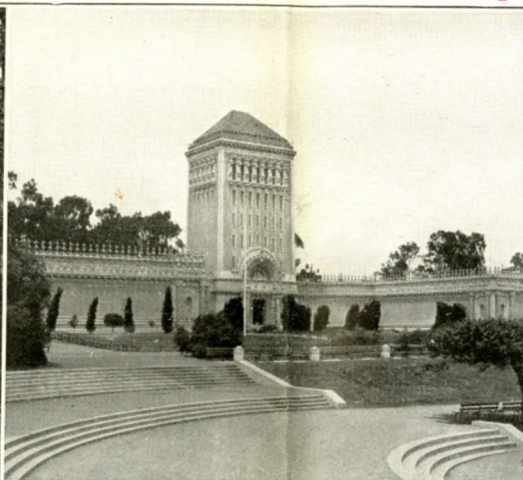
Oakland, Berkeley, and Alameda lie across the Bay, on its eastern shore. They are situated on a gently sloping plain, their streets and boulevards of homes, with blooming gardens, reaching far up the heights of the range of hills which form the background. Oakland is an attractive city with fine public

buildings. It has good hotel accommodations, making it a favorite stopping place. Lake Merritt, in the center of the city, is surrounded by parks, homes, and various public structures, and the boulevards encircling it form part of a chain of auto roads which traverse the entire East Bay region and cross its hills to the valleys and wooded canyons beyond. Alameda lies to the south of Oakland. It is essentially a home city and has the added attraction of popular bathing beaches.

Berkeley, directly north of Oakland, is the seat of the University of California. It is situated opposite the Golden Gate and is a pleasant and most desirable place of residence.

Mount Tamalpais and Muir Woods. The trip to Mount Tamalpais, the "Guardian of the Golden Gate" and the dominant peak of the Bay region, is one which no visitor to San Francisco should miss. The crossing of the bay, six miles by ferry steamer, to Sausalito—with cozy bungalows peeping from its steep and tree-clad slopes—gives one a splendid view of the great land-locked harbor with its mile-wide passage leading to the blue Pacific. From Sausalito electric trains run five miles to Mill Valley on the southern base of the mountain, whence the ascent is made in the open cars of the Mount Tamalpais & Muir Woods Railway, known as "the crookedest railroad in

Only Through Sleeping Car Line Memphis-California



In Muir Woods National Monument
Oakland City Hall from Lakeside Park

The De Young Museum in Golden Gate Park, San Francisco

Looking down from Mt. Tamalpais
The Campanile predominates on the Berkeley Campus

the world." The distance is eight miles and on the climb of 2,500 feet there are 281 curves. As the train winds upward the panoramas unfolded are ever-changing, embracing the bay and its islands, and a hundred miles of hills. Here and there are crossed shady canyons in the mountainside, deep ravines filled with dense growth of redwoods, madronas, oaks, and laurels. About half way up the mountain is the Double Bow-Knot, where the track parallels itself five times within a distance of one hundred yards.

The view from the summit of Tamalpais has been characterized as one of the grandest in the world. Far below lies the entire region with its cities and towns, while the westward view extends far out over the ocean. Ships approaching the Golden Gate are first sighted from the Marine Observatory on the highest part of the mountain. The Tavern of Tamalpais, at the terminus of the railway, is near the summit and from its broad veranda the views are almost infinite in variety.

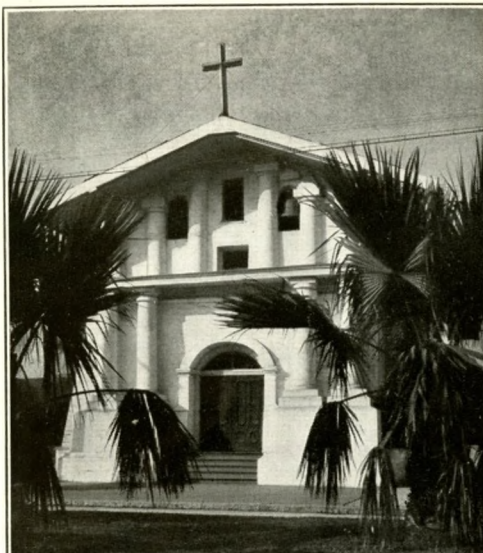
The Muir Woods are reached by branch line from the station of Mesa on the Double Bow-Knot. This sylvan wilderness was named in honor of John Muir, the celebrated naturalist, and was set aside as a national monument in 1908. There are 295 acres in the park, and more than three-fourths of the trees are towering

redwoods (*Sequoia sempervirens*), many of them 200 feet in height. Delightful rambles may be taken up and down Redwood Creek, which flows through the canyon over paths softly carpeted with redwood bark and pine needles. On a knoll overlooking the canyon stands rustic Muir Inn.

Byron Hot Springs, on the eastern side of Mount Diablo, and within two hours of the Bay region, has a comfortable hotel with well equipped medicinal mineral baths and swimming pool.

The "Bret Harte" Country. In the vicinity of Angels, Jamestown, Tuolumne, and Sonora there is an interesting region known as the "Bret Harte Country," reached by rail via Oakdale in the San Joaquin Valley. The trip can include the Calaveras Big Tree Grove.

Santa Clara Valley. The Santa Clara Valley every year becomes more popular with California's visitors. San Jose is the "garden city" of this region. Lick Observatory, on the summit of Mount Hamilton, is reached from San Jose. Other places which attract the visitor are Palo Alto, seat of Leland Stanford Junior University; Los Gatos, looking out over the valley from the western foothills; Santa Clara; Saratoga, and Congress Springs.



Mission San Francisco d'Assisi at San Francisco
Mission San Juan Bautista at San Juan

A Mission Garden

Mission San Carlos del Carmelo at Carmel
Mission San Miguel Archangel at San Miguel

Monterey and Del Monte. There are no more romantic and beautiful spots in the West than Monterey and Del Monte. Much historical interest centers in Monterey and the romance of the old Spanish regime here still lingers. In 1542 Rodriguez Cabrillo landed in the Bay of Monterey, and in 1602 Sebastian Vizcaino claimed the country for the King of Spain, giving to the region the name of his patron, the Count de Monterey. In 1770 Jasper de Portola, the first governor of Alta, California, established a presidio and garrison at Monterey and it remained the capital of California until 1849. Many buildings and relics of these early days are in evidence, notably the old Custom House, Colton Hall, and the Mission church of San Carlos de Borromeo, founded in 1771.

The Bay of Monterey sweeps in a half circle with miles of surf-rimmed beach and rock-bound bluffs. Its waters abound in fish life; steel-head trout, salmon, sea bass, yellow tail, barracuda, and tuna are caught in season. From the timbered slopes that rise landward a magnificent view is had of bay and ocean.

Hotel Del Monte is among the foremost of California's all-year resort hotels. It stands in a park of 125 acres, comprising lawns and flower beds interspersed with ancient oaks and stately pines, the result of thirty years' landscape gardening. Its

grounds contain 1,365 varieties of plant life, and beyond the grounds there extends the Del Monte Forest of 10,000 acres with miles of horseback paths. Here one inhales an exhilarating tonic—the balsam of the pines and the salt tang of the sea.

Every facility for outdoor sports is provided, including golf links, polo fields, tennis courts, and trap-shooting grounds. Adjacent to the hotel is an open-air Roman plunge, and on the bathing beach an indoor swimming pool.

The scenic Seventeen-Mile Drive starts and ends at the hotel, winding through park and forest and along the rugged sea coast, passing among the Monterey cypress trees, found nowhere else in the world. Many of these trees are some thousand years old, in form resembling the cedars of Lebanon.

Del Monte Lodge. On Pebble Beach, Carmel Bay, is one of the most complete hotel club houses on the coast. It is six miles from Del Monte by automobile. Its sporty golf course ensures an interesting game. There is good fishing on the bay, and the wonderful marine life may be viewed through glass-bottomed boats.

Pacific Grove and Asilomar. On the outer edge of the Monterey Peninsula is Pacific Grove, a popular resort with an even and mild climate. There is a full program of winter

"Golden State" Route—Only 1731 miles, 54¾ hours—Kansas City—San Diego



Mount Shasta—the great snow mountain of the North

pastimes and amusements. On the coast just beyond is Asilomar, with lodge and camping ground under the direction of the Y. W. C. A.

Carmel-by-the Sea is three miles from Monterey by auto stage. It lies among the pines and faces Carmel Bay with its white sand beach. It comprises a colony of artists and literary men and women. Golf links and tennis courts are available to visitors. The Pine Inn and La Playa provide comfortable quarters and good service. Near the village is the old mission San Carlos Borromeo, established in 1771 by Padre Junipero Serra, whose remains lie buried beneath the altar.

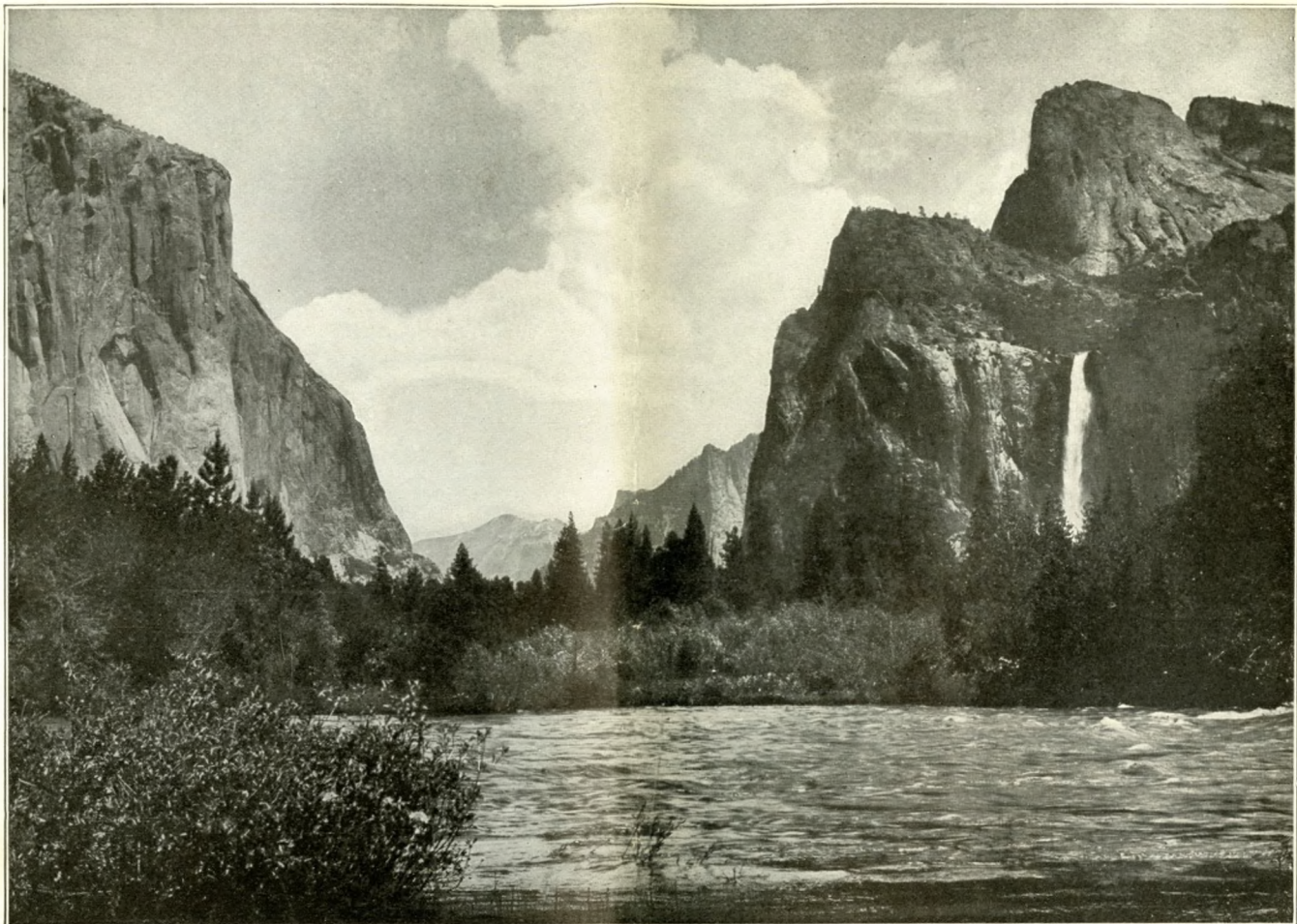
Highlands Inn is four miles south of Carmel and is reached by auto stage from Monterey. It is a most attractive bungalow hotel, built high upon the steep timbered bluffs that here slope to the rock-bound shores. It faces the open ocean and the view from its lobby windows is superb. Its comfortably furnished cottages half circle the main buildings and stand beneath the pines.

Santa Cruz on the upper end of Monterey Bay, is the principal city of this region. It has several comfortable hotels. The Casa del Rey on the beach is well equipped for summer tourists. The Santa Cruz golf links are among the best on

the coast. The Cliff Drive and other attractive auto trips can be made through the surrounding country. The Old Santa Cruz Mission, established here in 1771 by the Franciscans, has entirely disappeared. The old burial ground of the mission remains as a relic. Within six miles are the Santa Cruz Big Trees, in a park of twenty acres. In the hollow trunk of one of these Sequoias, named the Fremont tree, General Fremont and a number of his troops found shelter while camping here for several months in 1848. The largest tree in the grove is the Giant, 306 feet high and 64 feet in circumference.

Paso Robles Hot Springs. Midway between San Francisco and Los Angeles is Paso Robles Hot Springs with its comfortable hotel, and well known medicinal mineral waters. It has modern baths, swimming pool, and every required facility. Golf links and pleasant drives make this retreat most attractive.

Atascadero Beach, Morro Bay. The Cloisters is a well equipped seaside hotel in mission style, and is reached by auto from Paso Robles Hot Springs or Atascadero. Morro Rock, larger than the Rock of Gibraltar, rises nearby from the sea. The crescent beach is three miles long and sheltered by headlands, affording fine bathing and surf fishing. There is a golf course in the foothills.



Yosemite Valley in Yosemite National Park, one of the most beautiful of America's playgrounds

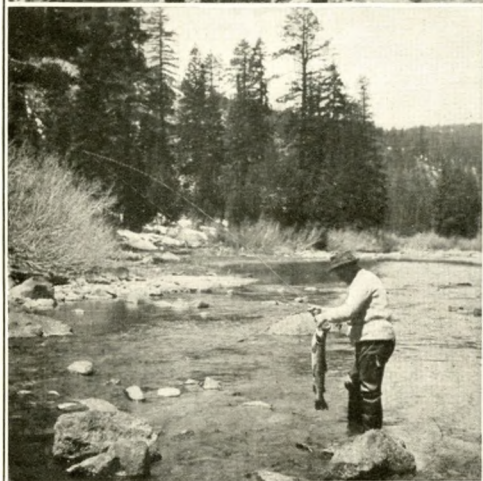
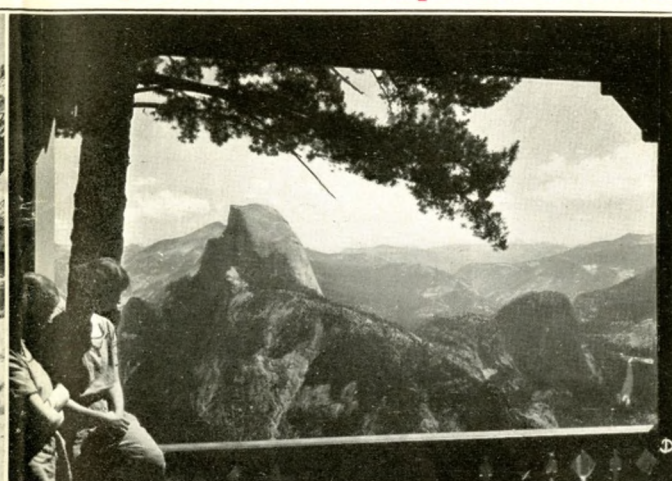


In the General Grant National Park



General Sherman Tree, Sequoia National Park

"Golden State Limited" to California — Quick Time — Superior Service



Lee Vining Canyon on Tioga Pass Road
A Catch in the Truckee River

Half Dome and Crest of Sierra Nevada, Yosemite Nat'l Park
Nevada Falls in Yosemite National Park
Through the Tunnel Tree, Wawona in Yosemite

American River Canyon. Crossing the Sierra Nevada the American River Canyon, with its rugged gorges, marks the course of the early '49ers, who followed the Truckee River, passing Donner Lake and bordering the Lake Tahoe Country.

During the summer season Lake Tahoe is reached by a night's ride from San Francisco via Southern Pacific to Truckee, there connecting with the Lake Tahoe Railway, fifteen miles to Tahoe Tavern.

Mount Shasta. In Northern California, near the head of the Sacramento River Canyon, is snow-crowned Mount Shasta—altitude 14,380 feet—an interesting incident to a trip through that section.

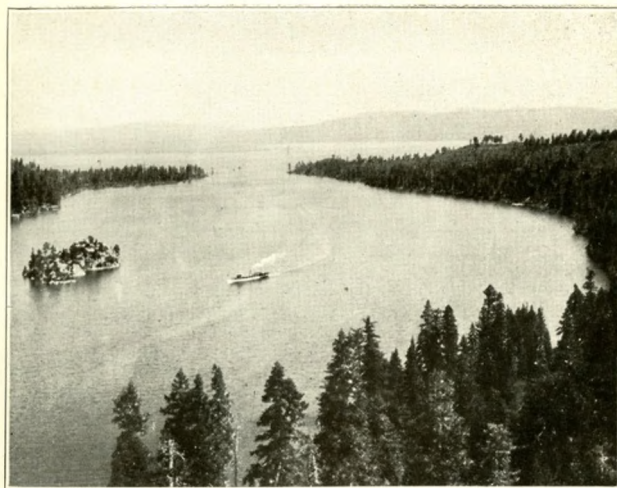
The High Sierra—Kings and Kern Rivers Canyons. Huntington Lake. South of Yosemite and to the north and east of the Sequoia and Grant National Parks, lie the Kings River Canyon and the Canyon of the Kern. On the western heights of the Sierra, in this region, is Huntington Lake with its well equipped lodge.

Yosemite National Park. Yosemite, with its earth's oldest and tallest trees, ranks high among world wonders. The Yosemite National Park covers an area 36 by 48 miles, yet

many of its most spectacular sights generally viewed by visitors are grouped together in a remarkably small area—the Yosemite Valley—a gorge only seven miles long and from one-half mile to one mile wide. The floor of this valley is verdure-clad, and in spring and summer is dotted with bright blooms, the Merced River flowing through its meadowlands and parklike forests. This deep-cleft mountain gorge, 4,000 feet above the sea, is walled in by towering granite cliffs. It is a realm of precipices, stately spires and domes, and magnificent waterfalls. El Capitan, which stands guard at the entrance to Yosemite, rises 3,300 feet, displaying on its face 400 acres of granite; Sentinel Rock is 3,100 feet high; Glacier Point, 3,250 feet; and the Half Dome, 4,892 feet. Cathedral Spires, Three Brothers, Cloud's Rest, Liberty Cap, and Royal Arches are some of the additional rock features that make Yosemite vistas so strikingly picturesque. Of its waterfalls Yosemite Falls plunge 2,600 feet. The upper reach is 1,600 feet, then a series of cascades 600 feet, and a final drop of 400 feet. Vernal, Nevada, and Illilouette Falls are each different from the other. Ribbon Falls is a glistening thread of 1,612 feet, while Bridal Veil, most graceful of all, drops 940 feet. Mirror Lake with its many reflections, including that of the rising sun, is remarkable. The completion of the road through Tioga Pass, 9,941 feet, on the eastern boundary, and skirting



American River Canyon



Emerald Bay, Lake Tahoe

Lake Tenaya, has opened a new scenic region, available to Southern Pacific passengers through Truckee and Merced, July 15 to September 15, by a thrilling 250-mile auto detour between Lake Tahoe and Yosemite.

Yosemite is reached from San Francisco and Los Angeles via Southern Pacific to Merced, there connecting with the Yosemite Valley R. R. to El Portal, thence by auto stages fifteen miles to Yosemite Village. Here the Sentinel Hotel is open the year round. While trails and roads to upper sections of the Park are closed in winter, Yosemite Valley's wonders are always accessible. During the summer season Yosemite Valley is also reached by auto stages from Merced via Wawona.

Mariposa Big Tree Grove. The Mariposa Big Trees, *sequoia gigantea*, lie within the southern boundary of the Park. This portion of the Park is open only in the summer season. The Mark Twain, the tallest tree, is 331 feet high, and the biggest (such as the Grizzly Giant and the Washington) are over 29 feet in diameter at base. The Wawona tree, 26 feet in diameter, is tunneled and the auto road passes through its trunk. The age of these trees is estimated at over 3,000 years.

Northwest of Yosemite Valley are also the smaller Tuolumne and Merced groves of Sequoia, reached from El Portal.

The Sequoia and General Grant National Parks. (Open only in summer season)

South of the Kings River Canyon and west of the Canyon of the Kern, in the High Sierra, is a great timbered region embraced in the Sequoia National Park, containing the most extensive big-tree groves in the world. Just beyond the northwest boundary is the California Grove on Redwood Mountain, and directly north is the General Grant National Park, containing a smaller grove of trees, among them the General Grant, the second largest known tree.

The proposed Roosevelt National Park would include not only the Sequoia National Park, but also the Kings River Canyon, the Canyon of the Kern, and the High Sierra which lie to the eastward, culminating in Mount Whitney, 14,501 feet, the highest mountain in the United States. This proposed park, embracing as it would a range of country varying in altitude from 1,000 to 14,000 feet, includes scenery that is unsurpassed in any mountain region. In the Sequoia Park and surrounding forests there have been recorded over a million of California's big trees, some of them the largest in the world, notably the sequoia known as the General Sherman, 36.5 feet in diameter at its base and 279.9 feet high. The General Grant Tree, in the General Grant National Park, is 35 feet in diameter and 264 feet high.

Sequoia National Park, in addition to its big-tree groves, is notable for its great wooded canyons, some of them 4,000 feet deep; for the views from Moro Rock across Kaweah Canyon toward Castle Rocks, which rise more than 5,000 feet above the valley floor; and views from summits of Alta Peak, Mount Silliman, and Vanderver Mountain, the latter 11,900 feet, the highest elevation in the Park. The Park will appeal to lovers of fishing and wild animal life.

There are comfortable accommodations in the two parks; the Giant Forest camp-hotel in the Sequoia National Park, and camp of modern tent-houses with hotel service in the Grant National Park.

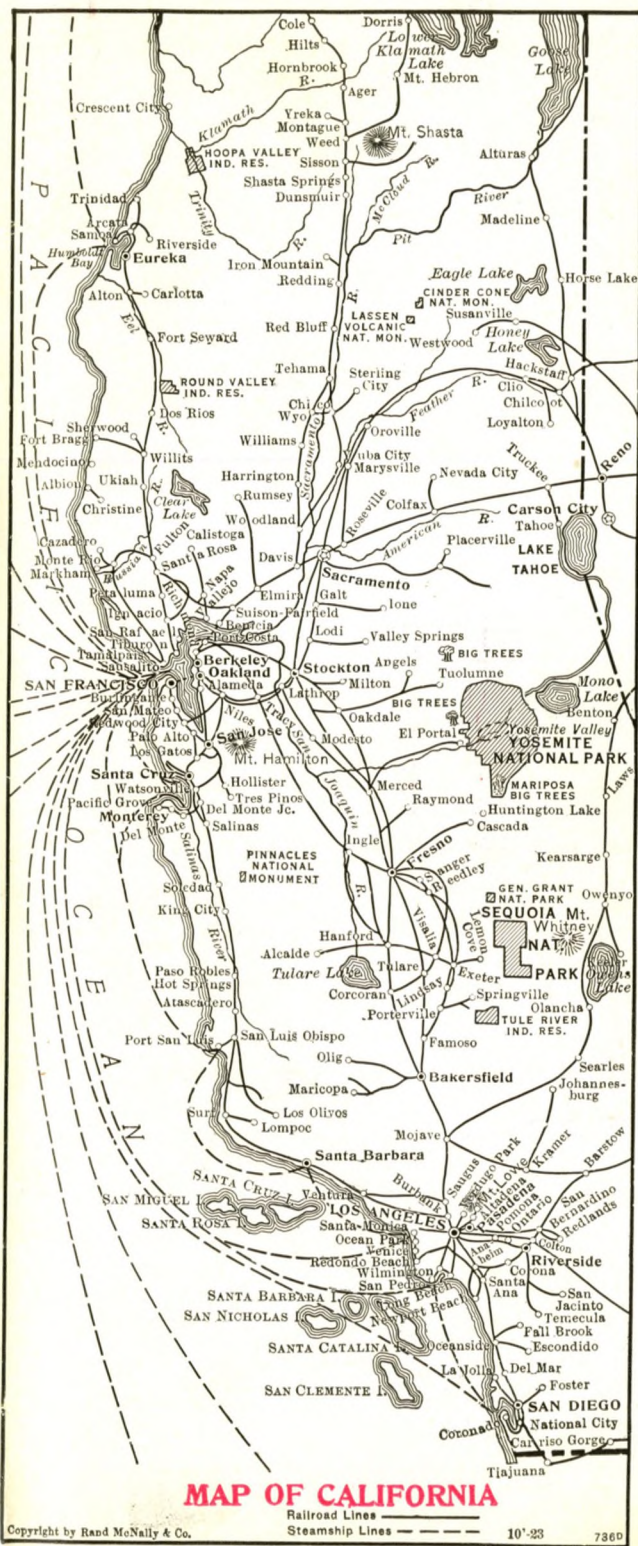
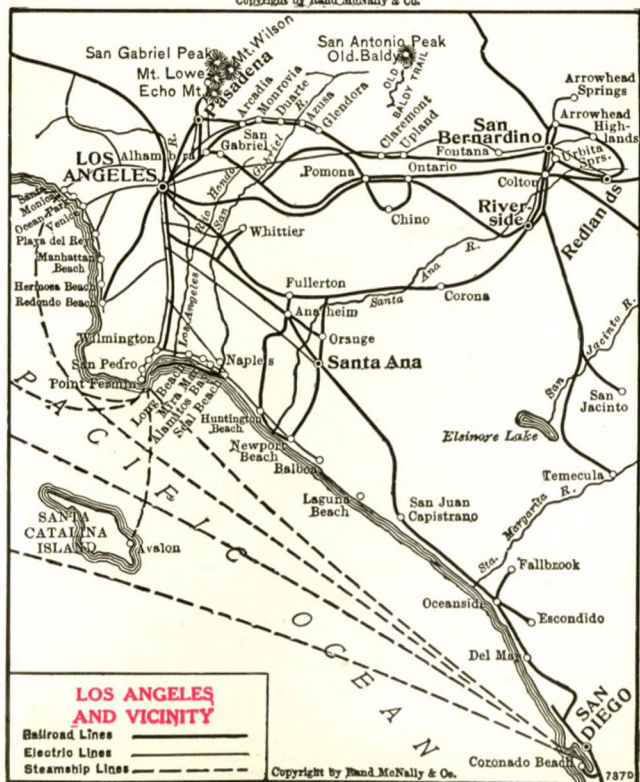
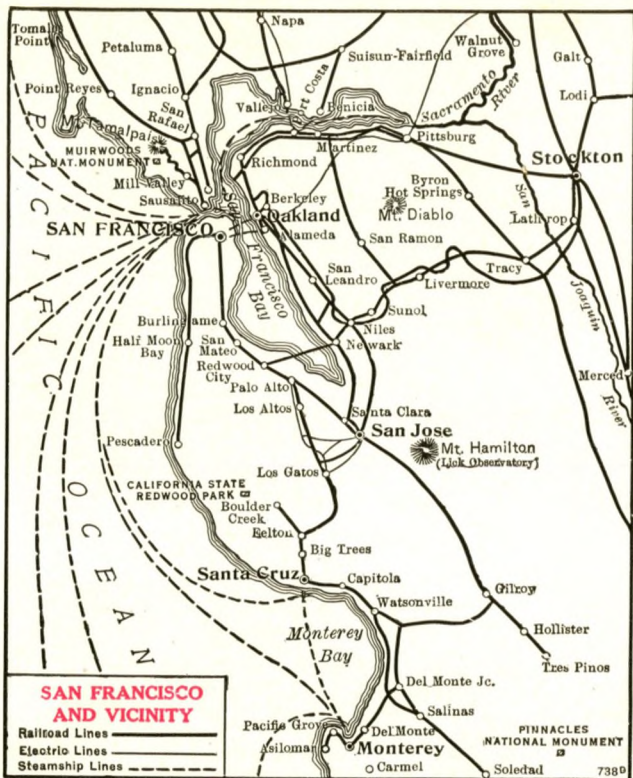
Sequoia National Park is reached via Southern Pacific to Visalia or Exeter, thence by electric railway to Lemon Cove, where auto stages run to Giant Forest, forty miles. The King's River Canyon is reached from Giant Forest by a two-day horse trail trip.

General Grant National Park is reached by Southern Pacific to Fresno or Sanger, thence auto stages to General Grant Camp, about sixty-five miles.

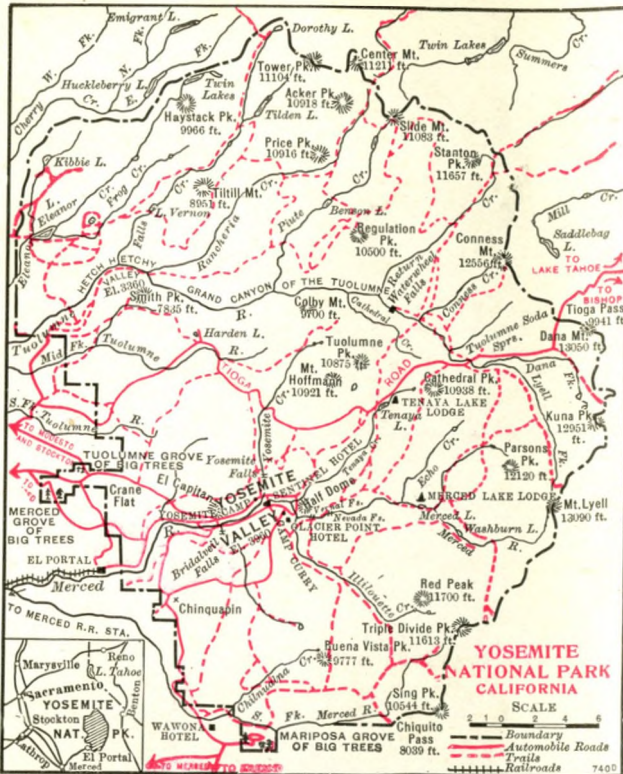
The National Forests. The National Forests of California, in summer, are available for the recreation-seeker. Here amidst the Sierra Nevada and the Coast Ranges, is a playground of 18,000,000 acres, in which are scenic attractions, excellent auto roads leading to Nature's beauty spots, streams and lakes well stocked with gamy trout, attractive camp sites and big game. In the National Forests you are free to come and go at will, to camp where fancy strikes you, and to fish and hunt without restrictions, except those imposed by the state game laws. Roads and trails have been built throughout the mountains by the Forest Service and posted with signs for the guidance of visitors. Camp sites have been set apart, and shelter cabins and comfort stations have been built. If you wish a summer home in the mountains, the Government will lease you an attractive site on which you may build your cabin. For maps and information address U. S. Forest Service, Washington, D. C., or San Francisco, Calif.

Stop-over Privileges.

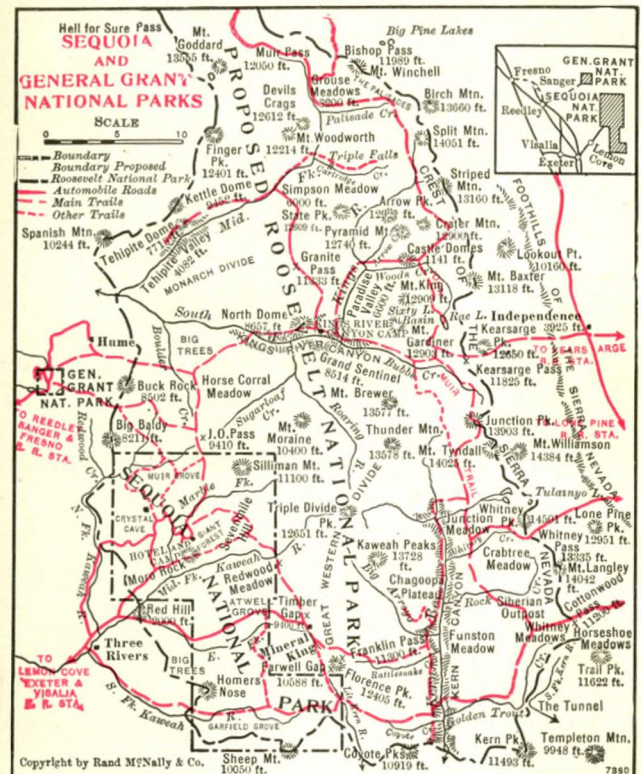
In addition to stop-over privileges on round-trip tickets, one way tickets, reading through the following named points will permit of ten day stop-over at such points: El Paso, Texas; Bisbee Junction, Douglas, Maricopa, and Tucson, Arizona; Colton, Los Angeles, Oakland, Sacramento, San Francisco and Santa Barbara, California; and also at various other points in Arizona and California, under certain conditions and which may be obtained upon application to ticket agents.



"Golden State" Route—Only 2264 miles, 72 hours—Twin Cities—Los Angeles

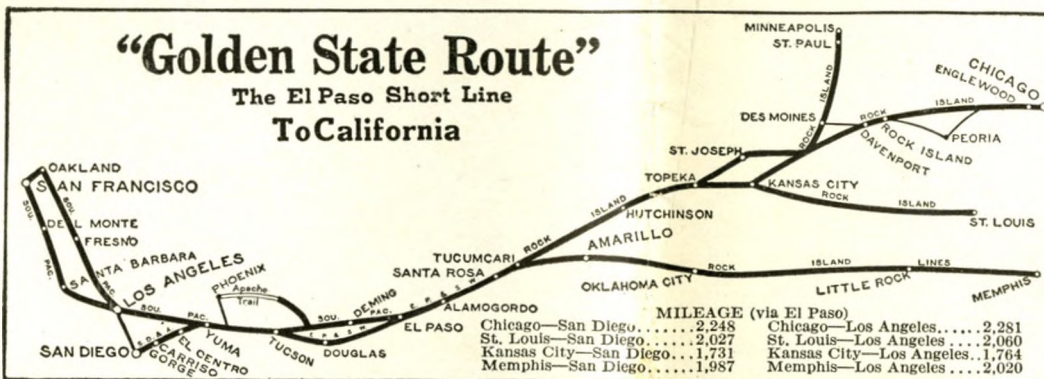


Yosemite National Park, open all year



Sequoia and General Grant National Parks, open during Summer Season

Direct Route from the East to Both Los Angeles and San Diego



Trains Nos. 3 and 4—"Golden State Limited" are operated westbound via Rock Island Lines to Santa Rosa; El Paso & Southwestern System, Santa Rosa to Tucson and Southern Pacific to California; eastbound, via Southern Pacific to El Paso; El Paso & Southwestern System to Santa Rosa and Rock Island Lines.

Trains Nos. 1 and 2—"Californian" westbound, via Rock Island Lines to Santa Rosa; El Paso & Southwestern System to El Paso; thence Southern Pacific to California; eastbound, via Southern Pacific to Tucson; El Paso & Southwestern System to Santa Rosa and Rock Island Lines.

Tickets honored between El Paso and Tucson via either line, regardless of route designated.

No. 3—Golden State Limited. Daily.
Drawing-Room Compartment
Observation Sleeping Car... Chicago to Los Angeles.
Drawing-Room Compartment
Sleeping Cars... Chicago to Santa Barbara.
Chicago to San Diego.
Kansas City to Los Angeles (from Minneapolis).
Drawing-Room Sleeping Car... St. Louis to Los Angeles.
Chicago to Kansas City (to Dallas on No. 11)
Douglas to Phoenix
Chicago to San Francisco
Dining Car... Serving all meals.
Coach Equipment... Chicago to Los Angeles.

No. 4—Golden State Limited. Daily.
Drawing-Room Compartment
Observation Sleeping Car... Los Angeles to Chicago.
Drawing-Room Compartment
Sleeping Cars... San Diego to Chicago.
Santa Barbara to Chicago.
Los Angeles to Kansas City (for Minneapolis).
Drawing-Room Sleeping Car... Los Angeles to St. Louis.
Kansas City to Chicago (from Dallas on No. 12).
Tourist Sleeping Car... San Francisco to Chicago (from San Francisco on Sou.Pac.No.8)
Dining Car... Serving all meals.
Coach Equipment... Los Angeles to Chicago.

No. 1—Californian. Daily.
Drawing-Room Sleeping Car... Kansas City to Los Angeles.
Drawing-Room Sleeping Car... Tucson to Los Angeles.
From Memphis on No. 41.
Tourist Sleeping Car... Kansas City to Los Angeles.
Coach Equipment... Kansas City to Los Angeles.

No. 2—Californian. Daily.
Drawing-Room Sleeping Car... Los Angeles to Kansas City.
Drawing-Room Sleeping Car... Los Angeles to Tucson.
From Memphis on No. 42.
Tourist Sleeping Car... Los Angeles to Kansas City.
Coach Equipment... Los Angeles to Kansas City.

TRAVEL BUREAUS

For full information, tickets, reservations, etc., address any one of the following Passenger Representatives of the Rock Island Lines or Southern Pacific Company.

ROCK ISLAND LINES

AMARILLO, TEX. (C. R. I. & G.) . . . C. B. DAVIS, Division Freight and Pass. Agent
 ATLANTA, GA., 218 Healey Bldg. V. M. CLUIS, General Agent
 BOSTON, MASS., Room 2, Old South Bldg. E. R. HINES, General Agent
 BUFFALO, N. Y., 456 Ellcott Sq. Bldg. A. D. MARTIN, Trav. Pass. Agent
 CHICAGO, ILL., 179 W. Jackson Blvd., Con. Office. L. H. McCORMICK. G. A. P. D.
 Room 723, La Salle Station W. J. LAFFERTY, Traveling Passenger Agent
 CINCINNATI, OHIO, 708 Keith Bldg. FRED ANZER, District Pass. Agent
 CLEVELAND, OHIO, 314 Hippodrome Bldg. F. A. HAAS, District Pass. Agent
 COLORADO SPRINGS, COLO., Room 215, First National Bank Bldg.,
 F. H. FAUS, General Agent
 119 East Pike's Peak Avenue. R. S. TORRINGTON, Agent, Consolidated Office
 DALLAS, TEX. (C. R. I. & G.), 118 Field Street. T. W. BOWDRY, Div. Pass. Agent
 Corner Commerce and Field Streets. CHAS. KNIGHT, City Ticket Agent
 DAVENPORT, IOWA, Rock Island Station. C. C. ANDERSON, Division Pass. Agent
 DENVER, COLO., 407 U. S. Nat'l Bank Bldg. G. W. MARTIN, General Agent
 New Patterson Bldg. M. L. MOWRY, District Passenger Agent
 DES MOINES, IA., 600 Royal Union Life Bldg., C. C. GARDNER, Gen. Agt. Pass. Dpt.
 403 West Walnut Street. GEO. R. KLINE, Agent, Consolidated Office
 DETROIT, MICH., Room 209-11 Majestic Bldg.,
 P. W. JOHNSTON, General Agent Pass. Dept.
 FT. WORTH, TEX. (C. R. I. & G.), Majestic Bldg., LEE R. SUMPTER, Trav. Pass. Agt.
 116 Ninth Street. V. N. TURPIN, City Passenger Agent
 Corner Commerce and Ninth Streets. ERNEST DUFF, Ticket Agent
 HOT SPRINGS NATIONAL PARK, ARK., Rock Island Station,
 MURRAY SMITH, City Pass. Agent
 HOUSTON, TEX. (C. R. I. & G.), 408 Scanlon Bldg. H. C. CALLAHAN, Gen. Agent
 INDIANAPOLIS, IND., Merchants Bank Bldg., D. J. BIRMINGHAM, General Agent
 KANSAS CITY, MO., 705 Walnut Street, S. A. GILLILAND, Gen. Agent Pass. Dept.
 LINCOLN, NEB., 120 N. 13th Street. J. A. DUFFY, City Passenger Agent
 LITTLE ROCK, ARK., 108 W. 3d St. C. C. CLAYTON, City Passenger Agent
 LOS ANGELES, CAL., 809 Van Nuys Bldg. B. F. COONS, General Agent
 J. L. STANTON, District Pass. Agent
 MASON CITY, IOWA H. W. ODLE, City Frt. and Passenger Agent
 MEMPHIS, TENN., 406-410 Exchange Bldg., G. J. CISSEL, District Pass. Agent
 72 Monroe Ave. G. P. STRODE, City Ticket Agent
 Central Station. L. H. PEELER, Depot Passenger Agent
 Phil A. Auer, Ass't Gen'l Pass'r Agt. St. Louis, Mo.
 H. H. Hunt, Ass't Gen'l Pass'r Agt. Little Rock, Ark.
 J. G. FARMER, G. P. A., C. R. I. & G. Ry., FORT WORTH, TEXAS
 W. J. LEAHY, Ass't Pass'r Traffic Mgr. CHICAGO, ILL.
 L. M. ALLEN, Vice President and Passenger Traffic Manager, C. R. I. & P. RY., CHICAGO, ILL.

MILWAUKEE, WIS., 1418-19 Majestic Bldg., W. T. BALDWIN, General Agent
 MINNEAPOLIS, MINN., 200-08 Metropolitan Life Bldg.,
 A. E. DOVE, General Agent Passenger Dept.
 524 Second Ave., South. G. F. HANSON, City Pass'r Agent
 J. F. McELROY, City Ticket Agent
 NEW ORLEANS, LA., 1026 Hibernia Bank Bldg. E. A. GROVES, General Agent
 NEW YORK, N. Y., 723 Knickerbocker Bldg., Broadway and 42nd Street
 K. E. PALMER, General Agent Pass'r Dept.
 OKLAHOMA CITY, OKLA., 5 S. Harvey St. O. COLLINS, Div. Pass'r Agent
 E. T. CONNOR, City Ticket Agent
 OMAHA, NEB., 810 Woodmen of the World Bldg. J. S. McNALLY, Div. Pass. Agt.
 311 S. 16th St. F. P. RUTHERFORD, Agent, Union Ticket Office
 PEORIA, ILL., 422 Liberty St. WARREN COWLES, District Passenger Agent
 Corner Jefferson and Liberty Streets, W. E. JOHNSON, Agent, Consolidated Office
 PHILADELPHIA, PA., 1107 Bankers Trust Bldg., GEO. B. FARROW, General Agent
 PITTSBURGH, PA., 4125 Jenkins Arcade Bldg.,
 H. M. BROWN, Gen'l Agent Pass'r Dept.
 PORTLAND, ORE., 1002 Gaseo Bldg. C. E. BURNETT, F. & P. A.
 ST. JOSEPH, MO., 421 Felix St. J. J. GOODRICH, General Agent
 ST. LOUIS, MO., 320 North Broadway. E. E. COWLES, City Ticket Agent
 817 Chemical Bldg. W. J. HENNESSY, City Passenger Agent
 ST. PAUL, MINN., Corner 4th and Robert Sts. R. E. KING, City Pass. Agent
 F. B. MARTIN, City Ticket Agt.
 SALT LAKE CITY, UTAH, 207-208 Walker Bank Bldg., A. JENSEN, General Agent
 SAN ANTONIO, TEX. (C. R. I. & G.), City Nat'l Bk. Bldg., D. O'LEARY, Gen. Agt.
 SAN FRANCISCO, CAL., 493 Monadnock Bldg. F. W. THOMPSON, Gen. Agt.
 SEATTLE, WASH., 812 White Bldg. GEO. P. CAVE, General Agent
 SIOUX FALLS, S. D., Rock Island Station. A. F. PILCHER, General Agent
 SPOKANE, WASH., 718 Old National Bank Bldg.,
 B. F. RINKENBERGER, Trav. Frt. and Pass. Agent
 TOPEKA, KAN., Rock Island Station. C. LOWE, City Pass. and Ticket Agent
 TULSA, OKLA., 414 Atlas Life Bldg., H. E. HURST, Trav. Frt. and Pass. Agent
 WICHITA, KAN., Room 101, Union Station. C. E. BASCOM, District Pass'r Agent
 WICHITA FALLS, TEX. (C. R. I. & G.), 204 Staley Bldg.,
 IRA D. BROWN, Trav. Frt. and Pass'r Agent
 D. McClure, Ass't Gen'l Pass'r Agt. Chicago, Ill.
 G. H. Asper, Ass't Gen'l Pass'r Agt. Chicago, Ill.
 C. A. SEARLE, General Pass'r Agt. KANSAS CITY, MO.

SOUTHERN PACIFIC COMPANY

ATLANTA, GA., 319-20 Healey Bldg., Walton and Forsyth Sts., D. ASBURY, Gen. Agt.
 BALTIMORE, MD., 206 Union Trust Bldg. W. B. JOHNSON, General Agent
 BIRMINGHAM, ALA., 406 Woodward Bldg. S. J. BROWN, General Agent
 BOSTON, MASS., 294 Washington St. E. S. LEAVITT, General Agent
 BUFFALO, N. Y., Ellcott Square Bldg. G. H. VOGEL, General Agent
 CHICAGO, ILL., Southern Pacific Bldg., 35-37 W. Jackson Blvd.,
 C. T. COLLETT, General Agent
 CINCINNATI, OHIO, Wiggins Bldg., Vine and Fifth Sts.,
 ROBERT McDOWELL, General Agent
 CLEVELAND, OHIO, 415 Hippodrome Bldg. EDMUND G. COOK, General Agent
 DENVER, COLO., Denham Bldg., 18th and California Sts.,
 E. H. WILLIAMS, General Agent
 DETROIT, MICH., Majestic Bldg., Woodward and Michigan Aves.,
 W. W. HALE, General Agent
 N. Kinell, Gen'l Pass. Agent. El Paso, Tex.
 C. L. McFaul, Assistant Passenger Traffic Manager, San Francisco, Cal.
 J. H. R. Parsons, Passenger Traffic Manager, San Francisco, Cal.

HAVANA, CUBA, Casteleiro Bldg. F. M. GIRALT, General Agent
 KANSAS CITY, MO., Railway Exchange Bldg., 7th and Walnut Streets,
 F. W. SEDGWICK, General Agent
 MEMPHIS, TENN., Exchange Bldg., 130 Madison Ave.,
 L. C. BOUCHARD, General Agent
 NEW YORK, N. Y., 165 Broadway, A. J. POSTON, General Agent, Pass'r Dept
 OKLAHOMA CITY, OKLA., 909 Colcord Bldg. J. A. EADS, General Agent
 PHILADELPHIA, PA., 1602 Chestnut Street. F. T. BROOKS, General Agent
 PITTSBURGH, PA., C. of C. Bldg., Smithfield St. and 7th Ave.,
 G. G. HERRING, General Agent
 ST. LOUIS, MO., Southern Pacific Building, 312-314 North 6th Street,
 L. B. BANKS, General Agent
 SALT LAKE CITY, UTAH, 41 S. Main Street. P. BANCROFT, General Agent
 F. S. McGinnis, Asst. Pass. Traffic Mgr. Los Angeles, Calif.

SAN DIEGO & ARIZONA RY.

F. B. DORSEY, Traffic Manager, San Diego, Calif.

GOLDEN STATE ROUTE

TO

CALIFORNIA

SAN DIEGO
LOS ANGELES
SANTA BARBARA
SAN FRANCISCO



Rock Island
Southern Pacific
Lines

GOLDEN STATE ROUTE

TO

CALIFORNIA

SAN DIEGO
LOS ANGELES
SANTA BARBARA
SAN FRANCISCO



Rock Island
Southern Pacific
Lines