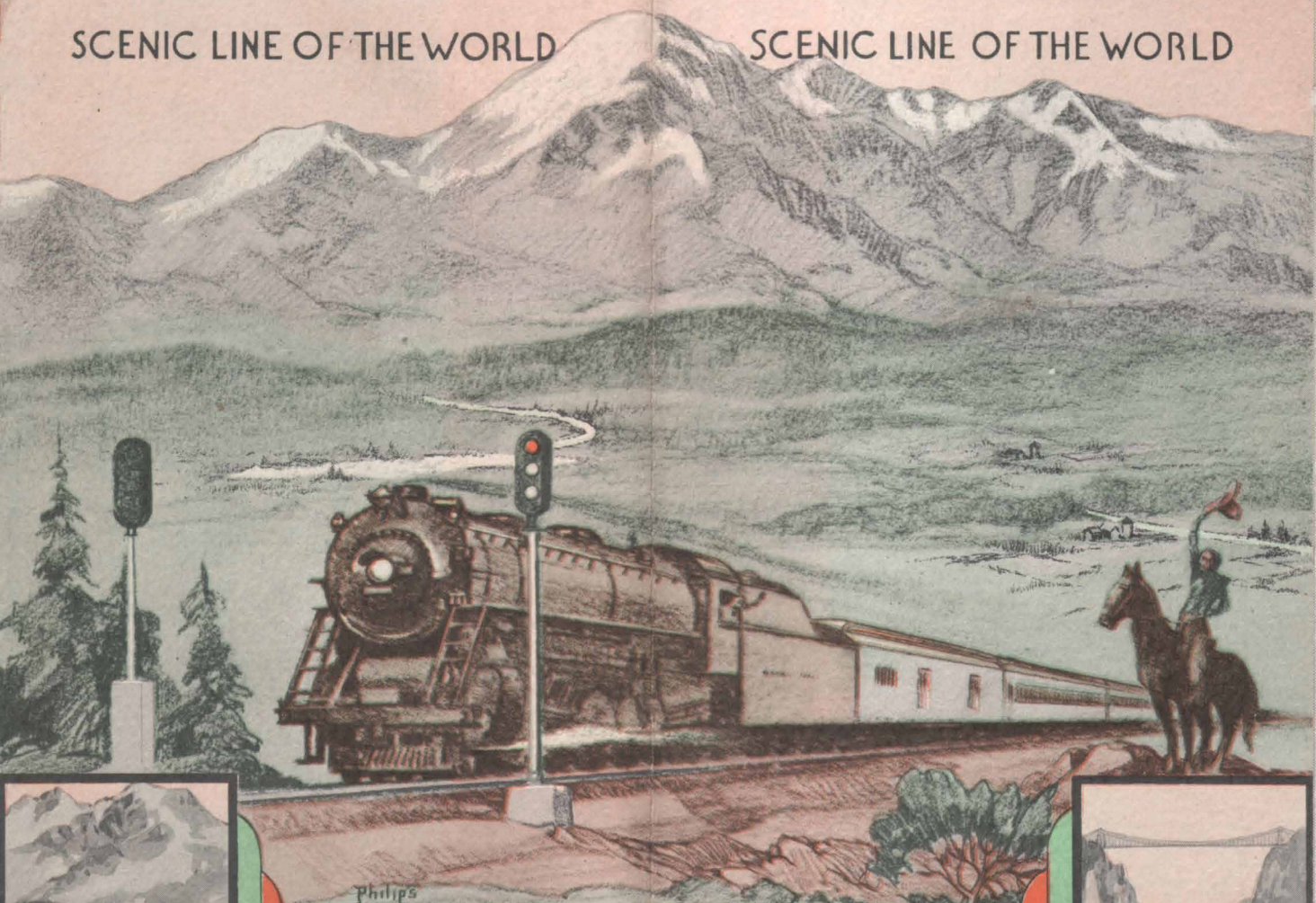


DENVER & RIO GRANDE WESTERN RAILROAD

SCENIC LINE OF THE WORLD

DENVER & RIO GRANDE WESTERN RAILROAD

SCENIC LINE OF THE WORLD



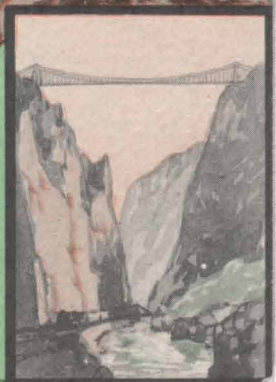
2 DAYLIGHT SCENIC ROUTES

**MOFFAT TUNNEL
OR ROYAL GORGE**

2 DAYLIGHT SCENIC ROUTES

**ROYAL GORGE OR
MOFFAT TUNNEL**

Thru the Rockies - Not around them





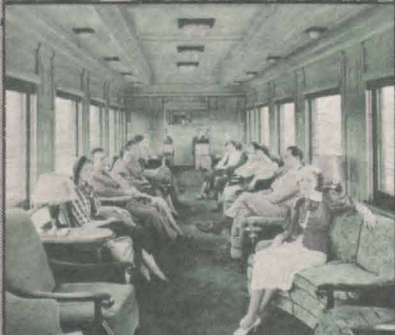
Denver Municipal Building—Built largely of Colorado granite this magnificent municipal building, newly constructed, completes Denver's beautiful civic center—an achievement typically western in architectural harmony and setting.



Colorado's Highest Mountains—Mt. Elbert 14,420 feet, and Mt. Massive 14,404 feet, the second and third highest peaks in the United States, dominate a view of such majestic splendor that the traveler, oblivious to all else, is carried in spirit to sublime heights and renewed inspiration.

Pike's Peak—In the tranquil distance rears the noble crest of America's best known mountain, serene in its knowledge of the sure progress of man, from the gold rush days of the covered wagon to the swift security of Rio Grande trains.

Mount of the Holy Cross—Not seen from the trains, but well worth a side trip, looms the great white cross of the eternal hills, now a national monument, fast becoming enshrined in the hearts of American pilgrims.



Lounge-Observation Car—In vivid contrast to the hardships endured by the early pioneer is the luxurious air-conditioned comfort of the club car. Deep cushioned seats; wide, high windows; refreshment service; radio; magazines—everything found in the modern club room.

Glenwood Canyon—Pine-scented breezes and ever-surging restless waters whisper mysterious songs of the mountains where Rio Grande trains follow the Colorado river between colorful towering canyon walls.

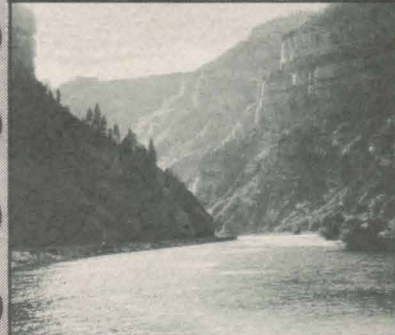


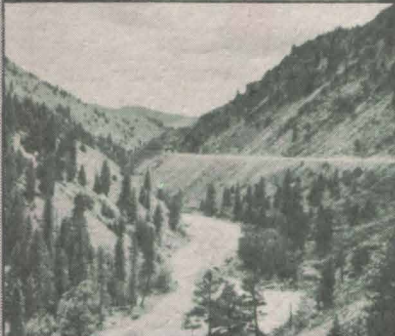
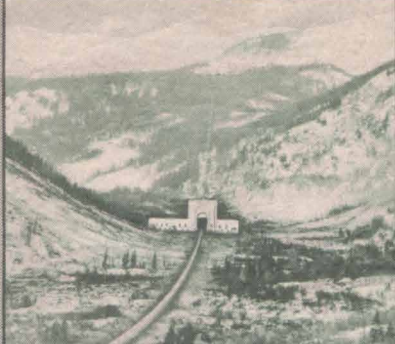
Royal Gorge—The famous Hanging Bridge clings to the massive granite walls of the Grand Canyon of the Arkansas River, just thirty feet apart at this point. The highest suspension bridge in the world appears as a silver streak across the azure blue, 1053 feet above the floor of the gorge.

Glenwood Springs, Western Watering Place—In a setting of lavish natural beauty is this enchanting health and pleasure resort, where the far-famed Yampah Hot Springs pours health-giving waters into the world's largest warm water, open air, swimming pool.

The World's Steepest Railroad—Carries passengers at an angle of 45 degrees—up, up, 1550 feet to the top of the, Royal Gorge. Extraordinary precautions insure absolute comfort and safety, at the same time providing a thrilling ride, ascent or descent.

Hospitable Dining Cars—In a home-like atmosphere, exceptionally well prepared meals are perfectly served in comfortable Rio Grande diners! The menu offers a variety of seasonal foods, catering to epicurean tastes. Moderately priced table d' hote and a la carte service.





The Moffat Tunnel—Piercing the Continental Divide 4021 feet under the summit of James Peak, which rears its lofty head 13,260 feet above sea level, the great bore, 6.2 miles in length, links the Atlantic and Pacific slopes of America.

Mesa Verde National Park—Mystery of mysteries is the Mesa Verde, land of the "Little People" and a lost civilization. From whence did they come? Where did they go? Land of enchantment and absorbing contemplation, this national park guards America's most treasured prehistoric ruins.

Upper Colorado River—Here's everything to satisfy the fondest dreams of the ardent fisherman—fighting, challenging trout; murmuring laughter of carefree, rippling water; thunderous notes of restless rivers, softened by the graceful spruce and wind-swept pine.

Mount Timpanogos—Near Provo in unique Utah, this 12,008-foot mountain, its Indian name meaning "Sleeping Princess," bears upon its rugged slopes America's southernmost glacier, a living mass of perpetual ice. A most brilliant spectacle seen from the train in early morning sunlight.

Gore Canyon of the Colorado River—Pierces granite walls of the rugged Rockies, and offers a resistless challenge to the endurance and skill of the big-game hunter. Bear, elk, deer, mountain lion and smaller game haunt this wild region.

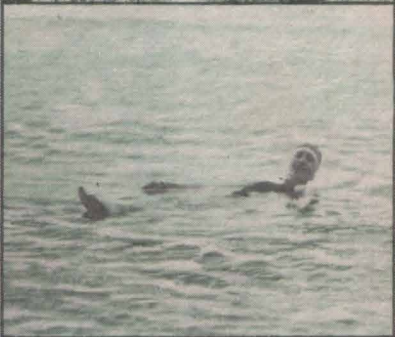
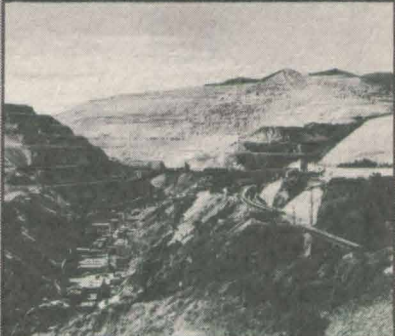
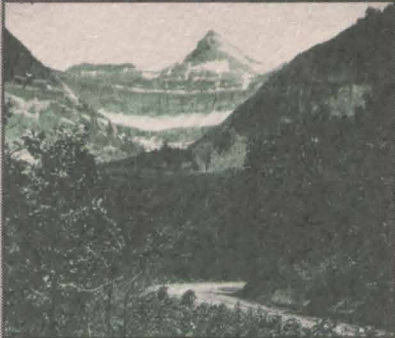
Bingham Copper Mine—Contrasting the age-old glacier movement on Mt. Timpanogos, is the hum of industry at "Copper Mountain," the only place in the world where this metal of a thousand uses can be mined with the steam shovel. This mountain of ore is located near Bingham, Utah.

The Pagodas—Creation of a mighty upheaval, chiseled by the elements in the likeness of Buddhist temples, these strange, many-hued rock formations have withstood the onslaught of time.

Great Salt Lake—The exhilaration aroused through bathing in America's inland sea can be realized only by those who enjoy this unique experience. The water contains 27.72 per cent salt. Bathers float without the slightest exertion—no chance to sink.

Low Cost Meal Service—Bracing mountain air and thrills of a ride thru the Rockies sharpen appetites, which must be satisfied. Tasty meals are served at seats in coach and tourist car, or at the coach Coffee Shop counter. Breakfast 25c, lunch 30c dinner 35c.

Mormon Temple Square—In the heart of Salt Lake City, is the visitor's principal center of interest. Here the Tabernacle, one of the world's largest auditoriums houses the Great Organ, with a total of over seven thousand pipes. Noonday recitals, given every day except Sunday, are free to the public.



THRU THE ROCKIES... NOT AROUND THEM



THE SCENIC LIMITED
Via Royal Gorge Route

THE PANORAMIC
Via Moffat Tunnel Route

Two completely modern, thoroughly air-conditioned trains daily between Colorado, Utah and the Pacific coast. Controlled temperature—cool in summer, warm in winter. Clean, fresh, filtered air, free from dust.

Convenient connections with all rail lines serving Denver, Colorado Springs, Pueblo, Salt Lake City and Ogden.

Through Pullman Sleeping Car Service between Chicago, St. Louis, Denver, Pueblo, Salt Lake City, Ogden and San Francisco.

For further information address

H. I. SCOFIELD, Passenger Traffic Manager
DENVER & RIO GRANDE WESTERN RAILROAD
DENVER, COLORADO

