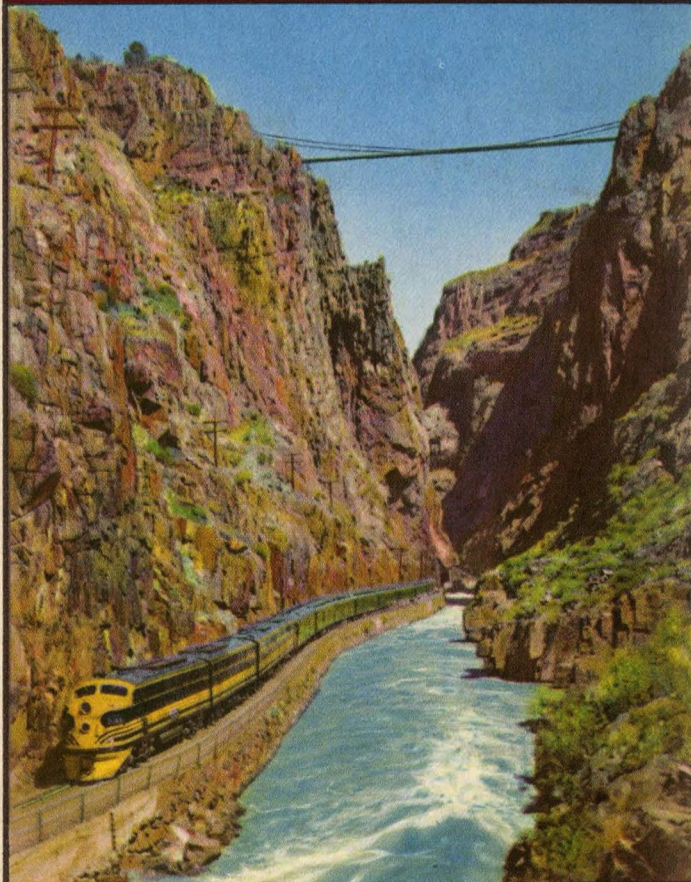


ISSUED JUNE 1, 1952

Rio Grande

TIME TABLES

ROYAL GORGE ROUTE



Royal Gorge of the Arkansas River

DENVER & RIO GRANDE WESTERN RAILROAD

MAIN LINE THRU THE ROCKIES

ISSUED JUNE 1, 1952

Rio Grande

TIME TABLES

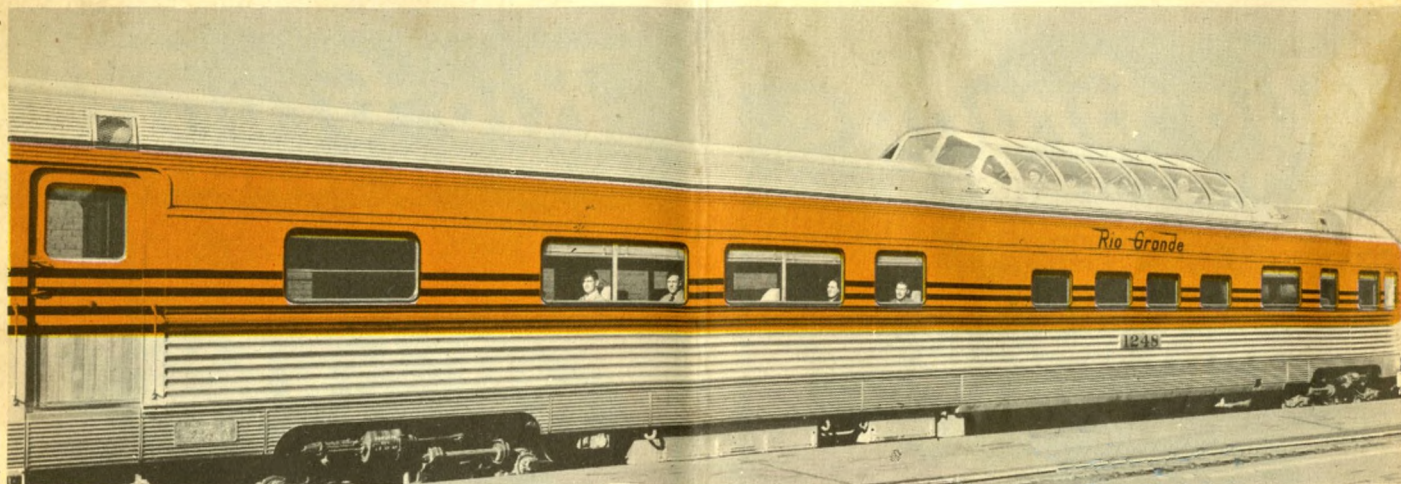
MOFFAT TUNNEL ROUTE



California Zephyr—Glenwood Canyon, Colorado River

DENVER & RIO GRANDE WESTERN RAILROAD

MAIN LINE THRU THE ROCKIES



TOPS IN TRAVEL

Extra comfort — **Extra** luxury — **Extra** travel thrills but **NO EXTRA FARE** on any Rio Grande train.

The most beautiful railroad cars ever built are now in service on Rio Grande's principal trains. Pictured above is one of the Vista-Dome coaches regularly assigned to Trains 1 and 2—the Royal Gorge. All coaches feature the scientifically-designed body-contoured "Sleepy Hollow" reclining seats for the utmost in comfort. The Royal Gorge also includes a luxurious grill-lounge car, as well as conventional standard Pullmans.

Below is one of the radically new sleeping cars assigned to the all-streamlined Prospector, featuring bedrooms and roomettes of new design plus standard sections (upper and lower berths). Comfort-styled coaches with "Sleepy Hollow" seating, and a friendly diner-lounge complete the consist.



DENVER & RIO GRANDE WESTERN RAILROAD

TABLE OF CONTENTS

Condensed Through Schedules	Pages 2 and 3	Map	Pages 8 and 9
Connecting Lines' Schedules	Page 12	Station Index	Page 1
Fares—Rail and Pullman	Page 13	Train Schedules and Equipment	Pages 4, 5, 6, 7 and 10
General Information	Page 15	Traffic Department Representatives	Page 16
Lines Operated in Freight Service Only	Pages 11 and 12	Transcontinental Pullman Car	Page 2

INDEX TO PRINCIPAL TRAIN SCHEDULES

THE CALIFORNIA ZEPHYR	Pages 2, 4 and 5	THE PROSPECTOR	Pages 3, 4 and 5
THE COLORADO EAGLE	Pages 3 and 6	THE ROYAL GORGE	Pages 3, 6 and 7
THE MOUNTAINEER	Page 4	THE SILVERTON and THE SAN LUIS	Page 10

INDEX TO PRINCIPAL STATIONS

TABLE NO.	TABLE NO.	TABLE NO.	TABLE NO.	TABLE NO.	TABLE NO.
Acequia, Colo. 2	Clearfield, Utah 1, 2	Fort Garland, Colo. 4	Kaysville, Utah 1, 2	Monument, Colo. 2	Radium, Colo. 1, 3
Ah Wilderness, Colo. 5	Clear Creek, Utah 27	Fountain, Colo. 27	Kearns, Utah 28	Moroni, Utah 21	Ralston, Colo. 1, 3
Alamo No. 2, Colo. 10	Clifton, Colo. 1, 2	Fraser, Colo. 1, 3	Kema, Utah 20	Mosca, Colo. 12	Range, Colo. 1
Alamosa, Colo. 4, 7, 12, 18	Colona, Colo. 17	Fruita, Colo. 1, 2	Kezar, Colo. 13	Mounds, Utah 1, 2, 26	Red Cliff, Colo. 2
Allison, Colo. 18	Colorado City, Colo. 11		Kremmling, Colo. 1, 3	Mt. Harris, Colo. 3	Redmond, Utah 20
Almont, Colo. 14	Colorado Springs, Colo.	Gann, Colo. 2	Kyune, Utah 1, 2	Mt. Pleasant, Utah 20	Richfield, Utah 20
American Fork, Utah 1, 2	Dell, Colo. 2, 4, 11	Garfield, Utah 28		Murray, Utah 1, 2	Ridgway, Colo. 17
Antonito, Colo. 18	Colton, Utah 1, 2, 27	Garfield Junction, Utah 28	Lacy, Colo. 1, 2		Riverton, Utah 2
Arboles, Colo. 18	Columbia Junction, Utah 26	Garfield Smelter, Utah 28	La Jara, Colo. 18	Nash, Utah 1, 2	Riverside, Colo. 2
Aspen, Colo. 6	Concrete, Colo. 2	Gary's, Colo. 13	Larkspur, Colo. 2	Nathrop, Colo. 2	Riverton, Utah 1, 2
Aurora, Utah 20	Cotopaxi, Colo. 2	Gato, Colo. 18	Larzac, Colo. 4	New Castle, Colo. 1, 2	Rockwood, Colo. 5
Austin, Colo. 8	Craig, Colo. 7	Geneva, Utah 1, 2	La Veta, Utah 1, 2	Niche, Colo. 1	Rollinsville, Colo. 1, 3
Avon, Colo. 8	Crescent, Colo. 7	Gilluly, Utah 1, 2	Layton, Utah 1, 2	North Salt Lake, Utah 1, 2	Romeo, Utah 18
Axtell, Utah 20	Crested Butte, Colo. 1, 3	Glen, Colo. 1	Leadville, Colo. 2	Roper, Utah 1, 2, 24	Routt, Colo. 3
Aztec, N. M. 19	Crookton, Colo. 13	Glenwood Springs, Colo. 1, 2, 6	LeGrand, Utah 24	Royal Gorge, Colo. 2	Roy, Utah 1, 2
Bacchus, Utah 28	Cumbres, Colo. 18	Gore, Colo. 1, 3	Lehi, Utah 1, 2		
Banning, Utah 26		Goshen, Utah 22	Leon, Colo. 6	Oak Creek, Colo. 3	Una, Colo. 1, 2
Bear River, Colo. 3	DeBeque, Colo. 1, 2	Granby, Colo. 1, 3	Leyden Jetz, Colo. 1, 3	Oak Creek, Utah 20	Upper Falls, Utah 25
Beiden, Colo. 2	Dell, Colo. 1, 2, 27	Grand Junction, Colo. 1, 2	Littleton, Colo. 2	Oak Hills, Colo. 3	Utah Ry. Jct., Utah 1, 2
Bingham, Utah 28	Delta, Colo. 1, 8	Grand Valley, Colo. 1, 2	Loma, Colo. 1, 2	Ogden, Utah 1, 2	
Blanca, Colo. 4	Del Norte, Colo. 7	Greenland, Colo. 2	Louviers, Colo. 2	Olathe, Colo. 1	
Bond, Colo. 1	Denver, Colo. 1, 2, 3, 4	Green River, Utah 1, 2	Ludlow, Colo. 9	Olivers, Utah 1, 2	
Bondad, Colo. 19	Dividend, Utah 22, 23	Gunnison, Colo. 13, 14, 15	Lumberton, N. M. 18	Orestod, Colo. 1, 3	
Bridgeport, Colo. 3	Dotsero, Colo. 1, 2	Gunnison, Utah 20	Lynn, Colo. 9	Osier, Colo. 18	
Brookston, Colo. 3	Doyle, Colo. 13	Gypsum, Colo. 2		Ouray, Colo. 17	
Brown Canon, Colo. 2	Dragerton, Utah 26		Mack, Colo. 1, 2		
Buena Vista, Colo. 2	Drowsy Water, Colo. 1, 3	Hanging Bridge, Colo. 2	Malta, Colo. 2	Palisade, Colo. 1, 2	
Burns, Colo. 1	Dulce, N. M. 18	Hayden, Colo. 3	Manti, Utah 20, 21	Palmer Lake, Colo. 2	
Buttes, Colo. 2	Durango, Colo. 5, 18, 19	Heber, Colo. 25	Marnel, Colo. 4	Pando, Colo. 2	
		Helper, Utah 1, 2	Marshall Pass, Colo. 13	Faonia, Colo. 8	
Cameo, Colo. 1, 2	Eagle, Colo. 2	Henkel, Colo. 2	Marysvale, Utah 20	Farlin, Colo. 13	
Canon City, Colo. 2	East Portal, Colo. 1, 3	Hill Top, Utah 20	Mayne, Colo. 9	Farkdale, Colo. 3	
Cardoniale, Colo. 6	Eden, Colo. 3	Hobson, Colo. 2	McCoy, Colo. 3	Farshall, Colo. 1, 3	
Caryhurst, Utah 25	Egeria, Colo. 3	Hooper, Colo. 12	Mears Junction, Colo. 13	Fayson, Utah 22	
Cary Ranch, Colo. 3	Elkdale, Colo. 1, 3	Hot Sulphur Springs, Colo. 1, 3	Mesa Verda National Park, Colo. 5	Fearl, Utah 23	
Castilla, Utah 1, 2	Elsinore, Utah 2	Howard, Colo. 2	Midvale, Utah 1, 2, 28	Phiappburg, Colo. 3	
Castle Gate, Utah 1, 2	Emma, Colo. 6	Husted, Colo. 2	Milburn, Utah 20	Pikeview, Colo. 2	
Castle Rock, Colo. 2	Englewood, Colo. 2		Milner, Colo. 3	Pine Cliff, Colo. 1, 3	
Castleton, Colo. 15	Ephraim, Utah 20, 21	Ignacio, Colo. 18	Minnequa, Colo. 4	Pines, Utah 20	
Cattle Creek, Colo. 6	Eunice, Utah 23	Indianola, Utah 20	Minturn, Colo. 2	Pinon, Colo. 2	
Cebolla, Colo. 13	Eureka, Utah 22	Iron King, Utah 23	Monero, N. M. 18	Plainview, Colo. 1, 3	
Cedar Creek, Colo. 16			Monson, Colo. 9	Pleasanton, Colo. 2	
Cedar Hill, N. M. 19	Fairview, Utah 20	Jack's Cabin, Colo. 14	Monte Vista, Colo. 7	Poncha Junction, Colo. 13	
Cedarwood, Colo. 4	Farmington, N. M. 19	Joseph, Utah 20	Montrose, Colo. 1, 16, 17	Portland, Colo. 2	
Cement Quarry, Utah 24	Farmington, Utah 1, 2			Price, Utah 1, 2	
Chama, N. M. 18	Flora, Utah 23			Provo, Utah 1, 2, 22, 25	
Charleston, Utah 25	Flora Vista, N. M. 19			Pueblo, Colo. 2, 4	
Chester, Colo. 13	Florence, Colo. 2				
Cisco, Utah 1, 2					

If you would like to receive future issues of this time table, please mail request to

H. F. ENO, Passenger Traffic Manager
DENVER & RIO GRANDE WESTERN RAILROAD
 Room 101, Rio Grande Building, 1531 Stout Street, Denver 2, Colo.

ROUTE OF THE

CALIFORNIA ZEPHYR

BETWEEN

CHICAGO • DENVER • SALT LAKE CITY • SAN FRANCISCO

READ DOWN

See Page 5 for Equipment

READ UP

No. 17 Daily	Miles From Chicago	STATIONS	Elevation	No. 18 Daily
3 30 PM CST	0	Lv CHICAGO, ILL. (Union Station) Ar	595	1 30 PM CST
5 50 " "	162	Lv Galesburg, Ill. Ar	785	10 53 AM "
6 30 " "	205	Cross Mississippi River		10 10 " "
7 48 " "	206	Lv Burlington, Ia. Ar	530	10 07 " "
9 45 " "	280	Lv Ottumwa, Ia. Ar	650	8 53 " "
11 15 " "	393	Lv Creston, Ia. Ar	1315	6 58 " "
11 45 " "	480	Cross Missouri River		5 30 " "
11 59 " "	501	Ar Omaha, Nebr. Lv	1040	5 00 " "
1 19 AM "	556	Lv Omaha, Nebr. Ar	1040	4 55 " "
2 52 " "	653	Lv Lincoln, Nebr. Ar	1150	3 40 " "
3 55 " MST	784	Lv Hastings, Nebr. Lv	1925	2 09 " "
8 20 " "	1039	Lv McCook, Nebr. Lv	2506	12 14 " "
		Ar DENVER, COLO. Lv	5280	7 15 PM MST

Denver & Rio Grande Western R. R.

8 40 AM MST	1039	Lv DENVER, COLO. Ar	5280	7 00 PM MST
	1089	Moffat Tunnel—6.2 miles—Continental Divide.	9239	
	1114	From Granby parallel the Colorado River for 235 miles.	7937	
12 38 PM MST	1168	Lv Bond, Colo. Lv	6710	3 12 PM MST
2 01 PM MST	1224	Lv Red Canyon—Glenwood Canyon		1 35 PM MST
3 48 " "	1313	Lv Glenwood Springs, Colo. Lv	5758	11 53 AM "
3 58 " "	1313	Ar Grand Junction, Colo. Lv	4583	11 46 " "
	1347	Lv Grand Junction, Colo. Ar	4583	
	1352	Ruby Canyon—Colo.-Utah State Line At Westwater, Utah—last glimpse of Colorado River.	4340	
7 21 PM MST	1490	Lv Helper, Utah Lv	5840	8 36 AM MST
	1515	Soldier Summit—Wasatch Range.	7440	
9 21 PM MST	1565	Lv Provo, Utah Lv	4512	6 32 AM MST
10 20 " "	1609	Ar SALT LAKE CITY, UTAH Lv	4224	5 40 " "

Western Pacific Railroad

10 40 PM MST	1609	Lv SALT LAKE CITY, UTAH Ar	4224	5 20 AM MST
2 15 AM PST	1872	Lv Elko, Nev. Lv	5060	11 17 PM PST
4 28 " "	2005	Lv Winnemucca, Nev. Lv	4325	9 12 " "
5 57 " "	2099	Lv Gerlach, Nev. Lv	3931	7 35 " "
8 05 " "	2216	Lv Portola, Calif. Lv	4834	5 28 " "
	2216	Feather River Canyon—116 miles through Sierra Nevada Range.		
11 28 AM PST	2332	Lv Oroville, Calif. Lv	205	2 00 PM PST
12 01 PM "	2358	Lv Marysville, Calif. Lv	60	1 22 " "
12 55 " "	2398	Lv Sacramento, Calif. Lv	23	12 35 " "
1 53 " "	2443	Ar Stockton, Calif. Lv	30	11 40 AM "
4 00 " "	2530	Ar Oakland, Calif. (3rd & Washington) Lv	25	9 38 " "
4 15 " "	2533	Ar Oakland Pier, Calif. Lv	14	9 20 " "
4 50 PM PST	2537	Ar SAN FRANCISCO, CAL. (Ferry Bldg.) Lv	11	9 00 AM "

CST—Central Standard Time. MST—Mountain Standard Time. PST—Pacific Standard Time.

TRANSCONTINENTAL PULLMAN SERVICE

Between NEW YORK and SAN FRANCISCO

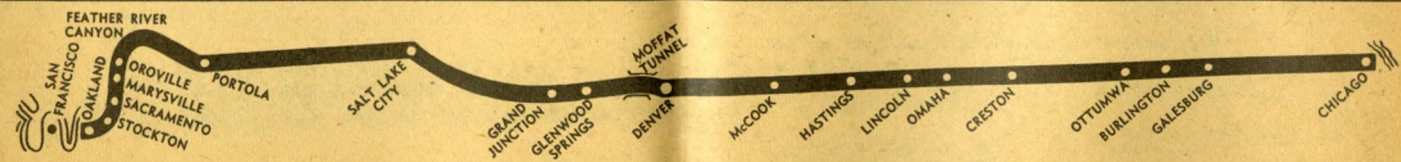
Car CZ-11, 6 Double Bedroom—10 Roomette Standard Sleeper on the "California Zephyr" operates westbound from New York to Chicago via Pennsylvania Railroad "Pennsylvania Limited" one day and New York Central "Lake Shore Limited" the next; eastbound from Chicago to New York via Pennsylvania Railroad "Admiral" one day, and New York Central "Lake Shore Limited" the next. Schedule and dates of operation shown below.

Westbound		SCHEDULE		Eastbound	
N. Y. C. Lake Shore Ltd.	P. R. R. Penna. Ltd.	(Subject to Change)		N. Y. C. Lake Shore Ltd.	P. R. R. Admiral
5:30 PM (MST)	5:45 PM (CST)	Lv New York	Ar	12:35 PM (MST)	10:45 AM (CST)
11:59 AM (CST)	9:30 AM (MST)	Ar Chicago	Lv	6:00 PM (CST)	4:30 PM (MST)
3:30 PM (CST)		Lv Chicago (Burlington)	Ar	1:30 PM (CST)	
8:20 AM (MST)		Ar Denver	Lv	7:15 PM (MST)	
8:40 AM (MST)		Lv Denver (Rio Grande)	Ar	7:00 PM (MST)	
10:20 PM (MST)		Ar Salt Lake City	Lv	5:40 AM (MST)	
10:40 PM (MST)		Lv Salt Lake City	Ar	5:20 AM (MST)	
		(Western Pacific)			
4:50 PM (PST)		Ar San Francisco	Lv	9:00 AM (PST)	

Westbound Car Passes Denver as follows:		DATES OF OPERATION		Eastbound Car Passes Salt Lake City as follows:	
Odd Dates	Even Dates			Odd Dates	Even Dates
N. Y. C.	P. R. R.	JUNE 1952		N. Y. C.	P. R. R.
N. Y. C.	P. R. R.	JULY 1952		N. Y. C.	P. R. R.
P. R. R.	N. Y. C.	AUGUST 1952		P. R. R.	N. Y. C.
N. Y. C.	P. R. R.	SEPTEMBER 1952		N. Y. C.	P. R. R.
N. Y. C.	P. R. R.	OCTOBER 1952		N. Y. C.	P. R. R.
P. R. R.	N. Y. C.	NOVEMBER 1952		P. R. R.	N. Y. C.
P. R. R.	N. Y. C.	DECEMBER 1952		P. R. R.	N. Y. C.
N. Y. C.	P. R. R.	JANUARY 1953		N. Y. C.	P. R. R.
P. R. R.	N. Y. C.	FEBRUARY 1953		P. R. R.	N. Y. C.
P. R. R.	N. Y. C.	MARCH 1953		P. R. R.	N. Y. C.
N. Y. C.	P. R. R.	APRIL 1953		N. Y. C.	P. R. R.
N. Y. C.	P. R. R.	MAY 1953		N. Y. C.	P. R. R.

June 1952		July 1952		August 1952	
S. M. T. W. T. F. S.		S. M. T. W. T. F. S.		S. M. T. W. T. F. S.	
1 2 3 4 5 6 7		1 2 3 4 5		3 4 5 6 7 8 9	
8 9 10 11 12 13 14		6 7 8 9 10 11 12		10 11 12 13 14 15	
15 16 17 18 19 20 21		13 14 15 16 17 18 19		17 18 19 20 21 22 23	
22 23 24 25 26 27 28		20 21 22 23 24 25 26		24 25 26 27 28 29 30	
29 30		27 28 29 30 31		31	
September 1952		October 1952		November 1952	
S. M. T. W. T. F. S.		S. M. T. W. T. F. S.		S. M. T. W. T. F. S.	
7 1 2 3 4 5 6		1 2 3 4 5		1 2 3 4 5 6 7 8	
8 9 10 11 12 13		5 6 7 8 9 10 11		9 10 11 12 13 14 15	
14 15 16 17 18 19 20		12 13 14 15 16 17 18		16 17 18 19 20 21 22	
21 22 23 24 25 26 27		19 20 21 22 23 24 25		23 24 25 26 27 28 29	
28 29 30		26 27 28 29 30 31		30	
December 1952		January 1953		February 1953	
S. M. T. W. T. F. S.		S. M. T. W. T. F. S.		S. M. T. W. T. F. S.	
1 2 3 4 5 6		1 2 3 4		1 2 3 4 5 6 7	
7 8 9 10 11 12 13		4 5 6 7 8 9 10		8 9 10 11 12 13 14	
14 15 16 17 18 19 20		11 12 13 14 15 16 17		15 16 17 18 19 20 21	
21 22 23 24 25 26 27		18 19 20 21 22 23 24		22 23 24 25 26 27 28	
28 29 30 31		25 26 27 28 29 30 31			
March 1953		April 1953		May 1953	
S. M. T. W. T. F. S.		S. M. T. W. T. F. S.		S. M. T. W. T. F. S.	
1 2 3 4 5 6 7		1 2 3 4		1 2 3 4 5 6 7 8 9	
8 9 10 11 12 13 14		5 6 7 8 9 10 11		10 11 12 13 14 15 16	
15 16 17 18 19 20 21		12 13 14 15 16 17 18		17 18 19 20 21 22 23	
22 23 24 25 26 27 28		19 20 21 22 23 24 25		24 25 26 27 28 29 30	
29 30 31		26 27 28 29 30		31	

All space on the California Zephyr—both coach and Pullman—is reserved and specifically assigned in advance. Dome seats are not reserved. Checked baggage will be handled on the California Zephyr to or from Glenwood Springs and Grand Junction, Colorado, but not to or from other intermediate points between Denver and Salt Lake City. No extra fare.



ROUTE OF THE

ROYAL GORGE

BETWEEN

DENVER • COLORADO SPRINGS • PUEBLO
GLENWOOD SPRINGS • GRAND JUNCTION
PROVO • SALT LAKE CITY • OGDEN

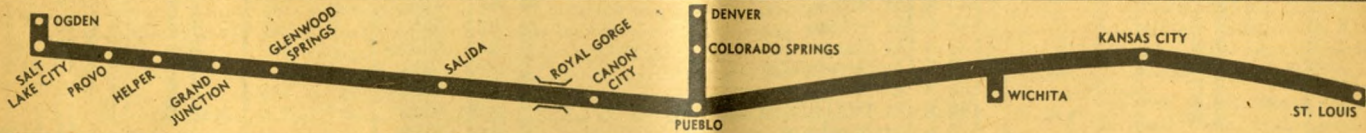
READ DOWN		See Page 7 for Equipment		READ UP	
No. 1 Daily	Miles from Denver	Mountain Standard Time	Elevation	No. 2 Daily	
8 50 AM	0	Lv Denver, Colo. Ar	5280	3 30 PM	
10 50 "	75	Lv Colorado Springs, Colo. .Lv	5989	1 32 "	
11 50 "	119	Ar Pueblo, Colo. Lv	4668	12 25 "	
12 10 PM	119	Lv Pueblo, Colo. Ar	4668	12 05 "	
1 18 "	160	Lv Canon City, Colo. Lv	5344	10 58 AM	
1 33 "	166	Ar Royal Gorge, Colo. Lv	5494	10 36 "	

Ten minute stop to view America's best loved travel wonder. Here is located Hanging Bridge, suspended between sheer canyon walls, just 30 feet apart. Above may be seen the World's Highest Bridge, across the Royal Gorge, 1,053 feet above the railroad tracks.

1 43 PM	166	Lv Royal Gorge, Colo. Ar	5494	10 26 AM
3 25 "	215	Lv Salida, Colo. Lv	7050	9 00 "
5 37 "	281	Lv Tennessee Pass, Colo. . .Lv	10221	7 03 "

Cross the Continental Divide at Tennessee Pass, highest main-line standard gauge railroad in the United States.

8 27 PM	360	Lv Glenwood Springs, Colo. .Lv	5758	4 10 AM
1 10 AM	450	Lv Grand Junction, Colo. .Lv	4583	2 00 "
4 37 "	619	Lv Price, Utah. Lv	5546	8 54 PM
7 15 "	701	Lv Provo, Utah. Lv	4512	6 27 "
8 15 "	745	Ar Salt Lake City, Utah. .Lv	4224	5 30 "
8 45 "	745	Lv Salt Lake City, Utah. .Ar	4224	5 00 "
9 50 "	782	Ar Ogden, Utah. Lv	4293	3 50 "



ROUTE OF THE

COLORADO EAGLE

BETWEEN

DENVER • COLORADO SPRINGS • PUEBLO
WICHITA • KANSAS CITY • ST. LOUIS

READ DOWN		See Page 7 for Equipment		READ UP	
No. 3 Daily	Miles from Denver	Denver & Rio Grande Western Railroad	Elevation	No. 4 Daily	
4 10 PMMST	0	Lv DENVER, COLO. . . Ar	5280	9 40 AMMST	
5 48 " "	75	Lv Colorado Spgs., Colo. .Lv	5989	8 01 " "	
		(Pikes Peak)			
6 40 PM "	119	Ar PUEBLO, COLO. . .Lv	4668	7 10 " "	
No. 12		Missouri Pacific R. R.		No. 11	
6 50 PMMST	119	Lv PUEBLO, COLO. . . Ar	4668	7 00 AMMST	
7 37 " "	170	Lv Ordway, Colo. Lv	4305	5 53 " "	
7 42 " "	175	Lv Sugar City, Colo. . . . Lv	4306	5 45 " "	
8 31 " "	231	Lv Eads, Colo. Lv	4214	4 56 " "	
12 02 AM "	458	Ar Hoisington, Kans. . . . Lv	1826	1 15 " "	
1 12 " CST	458	Lv Hoisington, Kans. . . . Ar	1826	2 07 " CST	
1 50 " "	492	Lv Geneseo, Kans. Lv	1751	1 32 " "	
7 00 AMCST	580	Ar WICHITA, KANS. . .Lv	1299	9 30 PMCST	
3 07 AMCST	565	Lv Herington, Kans. . . . Lv	1335	12 14 AMCST	
3 38 " "	592	Lv Council Grove, Kans. .Lv	1234	11 48 PM "	
4 15 " "	630	Lv Osage City, Kans. . . . Lv	1084	10 38 PMCST	
4 53 " "	662	Lv Ottawa, Kans. Lv	893	10 13 " "	
5 22 " "	683	Lv Osawatomie, Kans. . .Lv	862	9 10 " "	
6 40 " "	742	Ar KANSAS CITY, MO. .Lv	781	9 00 " "	
7 01 " "	742	Lv KANSAS CITY, MO. .Ar	781	6 05 " "	
9 45 " "	900	Lv Jefferson City, Mo. . .Lv	556	4 00 " "	
12 01 PM "	1021	Ar ST. LOUIS, MO. . .Lv	455		

• Stops to receive or discharge revenue passengers.
MST Mountain Standard Time. CST Central Standard Time.

ROUTE OF THE

PROSPECTOR

BETWEEN

DENVER • GLENWOOD SPRINGS • GRAND JUNCTION • PROVO • SALT LAKE CITY

See Page 5 for Equipment

WESTBOUND				EASTBOUND			
Miles from Denver	Elevation	Mountain Standard Time	No. 7 Daily	Miles from Salt Lake City	Elevation	Mountain Standard Time	No. 8 Daily
0	5280	Lv Denver, Colo.	5 30 PM	0	4224	Lv Salt Lake City, Utah.	5 30 PM
		Fifty miles from Denver enter the Moffat Tunnel which extends 6.2 miles under the Continental Divide.		44	4512	Lv Provo, Utah.	6 27 "
185	5758	Lv Glenwood Springs, Colo.	11 10 PM	295	4583	Lv Grand Junction, Colo.	12 32 AM
275	4583	Lv Grand Junction, Colo.	1 10 AM	385	5758	Lv Glenwood Springs, Colo.	2 23 "
526	4512	Lv Provo, Utah.	7 15 "	From Plainview, 25 miles west of Denver, can be seen the magnificent view of far-sweeping plains, including almost one-fourth of the total area of Colorado.			
570	4224	Ar Salt Lake City, Utah.	8 15 "	570	5280	Ar Denver, Colo.	8 15 AM



Table 1

MOFFAT TUNNEL ROUTE
DENVER • BOND • GLENWOOD SPRINGS • GRAND JUNCTION • MONTROSE

READ DOWN				Issued June 1, 1952		READ UP					
No. 19 The Mountaineer	No. 7 The Prospector	No. 17 California Zephyr	Miles from Denver	STATIONS Mountain Standard Time		Eleva- tion	No. 18 California Zephyr	No. 8 The Prospector	No. 20 The Mountaineer		
* 7 30 PM	* 5 30 PM	* 8 40 AM	.0	Lv DENVER, COLO.	Ar	5280	* 7 00 PM	* 8 15 AM	* 7 20 AM		
f			7.1	Lv Ralston	Lv	5258			f 7 03 AM		
f			12.4	Lv Leyden Jct.	Lv	5617			f 6 53 "		
f			24.4	Lv Plainview	Lv	6782			f 6 24 "		
f 8 22 "			31.3	Lv Crescent	Lv	7441			f 6 04 "		
f 8 44 "			37.0	Lv Pine Cliff	Lv	7966			f 5 47 "		
f 9 00 "			41.7	Lv Rollinsville	Lv	8367			f 5 35 "		
f 9 14 "			46.8	Lv Tolland	Lv	8886			f 5 23 "		
f 9 26 "			50.0	Ar East Portal	Lv	9197			f 5 18 "		
MOFFAT TUNNEL											
9 42 "	f 7 28 PM	Streamlined Diesel-Power	56.8	Lv Winter Park	Ar	9076	Streamlined Diesel-Power	f 6 12 AM	f 5 00 AM		
9 58 "			62.1	Lv Fraser	Lv	8561		f 4 40 "			
10 07 "			65.9	Lv Tabernash	Lv	8318		f 4 30 "			
f 10 13 "			70.2	Lv Elkdale	Lv	8156		f 4 22 "			
f 10 35 "	f 8 01 PM		75.7	Ar Granby	Lv	7937		f 5 37 AM	f 4 10 "		
f 10 40 "			79.7	Lv Drowsy Water	Lv	7790		f 4 01 "			
f 10 50 "			86.1	Ar Hot Sulphur Springs (Byers Canyon)	Lv	7662		f 3 50 "			
f 11 00 "			91.0	Lv Parshall	Lv	7589			f 3 32 "		
f 11 28 "	8 40 PM		103.2	Ar Kremmling (Gore Canyon)	Lv	7322		4 57 AM	f 3 15 "		
f 11 33 "			105.8	Lv Gore	Lv	7322			f 2 55 "		
12 01 AM		116.1	Lv Radium	Lv	6858		f 2 28 "				
f 12 21 "		126.1	Lv State Bridge	Lv	6728		f 2 01 "				
12 45 "	9 40 PM	129.3	Ar BOND (Orestod)	Lv	6710	3 12 PM	3 59 AM	f 1 55 "			
1 10 "	9 45 "	129.3	Lv BOND (Orestod)	Ar	6710	3 09 "	3 54 "	f 1 35 "			
f 1 20 "		134.9	Ar Glen	Ar	6630			f 1 20 "			
f 1 33 "		142.1	Ar Dell	Ar	6523			f 1 00 "			
f 1 42 "		144.6	Ar Burns	Ar	6502			f 12 52 "			
f 1 51 "		148.8	Ar Sylvan	Ar	6451			f 12 44 "			
f 2 01 "		155.3	Ar Range	Ar	6350			f 12 35 "			
f 2 05 "		157.7	Ar Sweetwater	Ar	6317			f 12 31 "			
f 2 12 "		163.2	Ar Niche	Ar	6217			f 12 21 "			
f 2 17 "		166.8	Ar DOTSERO	Ar	6155			f 12 15 "			
f 2 34 "		175.4	Ar Shoshone (Glenwood Canyon)	Ar	6119			f 11 55 PM			
3 05 "	11 10 PM	2 01 PM	185.0	Lv GLENWOOD SPRINGS	Lv	5758	1 35 PM	2 23 AM	11 33 "		
3 49 "			197.6	Ar New Castle	Ar	5562			10 52 "		
4 06 "			204.4	Ar Silt	Ar	5441			10 35 "		
4 33 "	x		211.5	Ar Rifle	Ar	5310		j	10 21 "		
5 03 AM			216.3	Ar Lacy	Ar	5239					
		Stainless Steel	228.9	Ar Grand Valley	Ar	5104	Stainless Steel		9 43 PM		
			233.7	Ar Una	Ar	5025					
5 23 AM			241.5	Ar DeBeque	Ar	4945			9 20 PM		
f 5 53 "			257.5	Ar Cameo	Ar	4774			f 8 52 "		
6 10 "			261.9	Ar Palisade	Ar	4739			8 46 "		
6 25 "			267.4	Ar Clifton	Ar	4713			8 32 "		
6 40 "	12 53 AM		3 48 PM	274.5	Ar GRAND JUNCTION, COLO. †	Lv		4583	11 53 AM	12 32 AM	8 20 "
7 10 AM	Schedule		Schedule	274.5	Lv Grand Junction	Ar		4583	Schedule	Schedule	8 05 PM
f 7 40 "	of No. 7	of No. 17	286.9	Ar Whitewater	Lv	4665	of No. 18	of No. 8	f 7 28 "		
f 8 06 "	continued	continued	301.0	Ar Bridgeport	Lv	4980	continued	continued	f 7 02 "		
9 03 "	on	on	325.9	Ar Delta	Lv	4980	from	from	6 15 "		
9 27 "	next page.	next page.	336.5	Ar Olathe	Lv	5365	next page.	next page.	5 50 "		
9 50 "			347.2	Ar Montrose, Colo.	Lv	5811			5 30 "		

REFERENCE NOTES

- * Daily.
- f Flag stop.
- † U. S. Mail Box located on station platform.
- j Stops on flag to receive revenue passengers for Denver, Colorado Springs, Pueblo or beyond.
- x Stops to discharge pay passengers from Denver, Colorado Springs and Pueblo.
- Ar Rail-Auto Service available at this point.

See Page 5
for
equipment
of trains

MOFFAT TUNNEL ROUTE
GRAND JUNCTION • PRICE • PROVO • SALT LAKE CITY • OGDEN

Table 1

READ DOWN			Issued June 1, 1952			READ UP		
No. 7-1 The Prospector	No. 17 California Zephyr	Miles from Denver	STATIONS Mountain Standard Time			Eleva- tion	No. 18 California Zephyr	No. 8-2 The Prospector
* 1 10 AM	* 3 58 PM	274.5	Lv GRAND JUNCTION, COLO.†	Ar	4583	*11 46 AM	*12 15 AM	
x		285.4	Ar Fruita	Ar	4510			
x		290.5	Ar Loma	Ar	4525			
x		293.8	Ar Mack, Colo.	Ar	4540			
			<i>(Ruby Canyon)</i>					
			<i>(Colorado-Utah State Line)</i>					
x		313.3	Ar Westwater, Utah	Ar	4340			
x		329.3	Ar Cisco	Ar	4375			
2 43 AM		353.0	Ar Thompson	Ar	5160		10 39 PM	
f 3 11 "		380.1	Ar Green River	Ar	4080		10 06 "	
x		406.3	Ar Woodside	Ar	4645			
x		428.1	Ar Mounds	Ar	5442			
x		437.9	Ar Wellington	Ar	5415			
4 37 AM		444.0	Lv PRICE†	Lv	5546		8 54 PM	
4 50 "	7 18 PM	451.4	Ar Helper	Lv	5840	8 36 AM	8 42 "	
x		453.7	Ar Utah Railway Junction	Ar	5996			
x		455.2	Ar Castle Gate	Ar	6120			
		464.2	Ar Kyune	Ar	7013			
		469.4	Ar Colton	Ar	7170			
f 5 46 AM		476.3	Ar Soldier Summit† <i>(Wasatch Range)</i>	Ar	7440		f 7 47 PM	
		485.9	Ar Gilluly	Ar	6529			
6 42 AM		505.8	Lv Thistle	Ar	5033		6 55 PM	
		509.5	Ar Castilla	Ar	4912			
f 7 01 AM		520.7	Lv Springville	Ar	4555		f 6 34 PM	
7 15 "	9 21 PM	526.1	Lv PROVO†	Ar	4512	6 32 AM	6 27 "	
x		532.1	Lv Geneva	Ar				
x		538.6	Lv American Fork	Ar	4563			
x		541.9	Lv Lehi	Ar	4550			
x		548.3	Lv Nash	Ar	4475			
x		551.0	Lv Olivers	Ar	4453			
x		554.1	Lv Riverton	Ar	4408			
x		559.4	Lv Midvale	Ar	4365			
		563.3	Ar Murray	Ar	4310			
		567.4	Ar Roper	Ar	4320			
8 15 AM	10 20 PM	570.0	Ar SALT LAKE CITY, UTAH†	Lv	4224	5 40 AM	5 30 PM	
* 8 45 AM		570.0	Lv SALT LAKE CITY, UTAH	Ar	4224		* 5 00 PM	
f 9 00 "		575.8	Ar North Salt Lake	Ar			f 4 44 "	
f 9 04 "		578.5	Ar Woods Cross	Ar	4259		f 4 40 "	
f 9 13 "		585.5	Ar Farmington	Ar	4231		f 4 30 "	
		589.3	Ar Kaysville	Ar	4262			
f 9 23 AM		592.1	Ar Layton	Ar	4329		f 4 20 PM	
f 9 28 "		595.7	Ar Clearfield	Lv			f 4 13 "	
f 9 35 "		600.0	Ar Roy	Ar	4390		f 4 05 "	
9 50 "		606.9	Ar OGDEN, UTAH†	Lv	4293		3 50 "	

EQUIPMENT
(All equipment is air-conditioned)

Nos. 7 and 8
THE PROSPECTOR
 (Streamlined—Diesel-Power)
 Diner-Lounge between Denver and Salt Lake City.
 Standard Sleepers between Denver and Salt Lake City. (D-5 and D-7 westbound); (D-6 and D-8 eastbound). (2 cars) 5 Sections, 6 Double Bedrooms, 5 Roomettes.
 Chair car between Denver and Salt Lake City.

Nos. 19 and 20
THE MOUNTAINEER
 Standard Sleeper between Denver and Montrose (D-1 westbound) (D-2 eastbound), 14 Sections.
 Chair Car between Denver and Montrose.
 Standard Sleeper between Denver and Craig (D-3 westbound) (D-4 eastbound) 12 Sections, 1 DR. (In Trains 9 and 10 between Bond-Orestod and Craig.)
 Chair Car between Denver and Craig (In Trains 9 and 10 between Bond-Orestod and Craig.)



EQUIPMENT
(All equipment is air conditioned)

See page 4 for explanation of references.

Nos. 17 and 18—THE CALIFORNIA ZEPHYR
 (Stainless Steel, Streamlined, Diesel-Power)

Vista Dome, Observation Lounge—Standard Sleeper between Chicago and San Francisco (CZ-10) 1 Drawing-room, 3 Dbl. Bedrooms, via C. B. & Q.-D. & R. G. W.-W. P.
 Standard Sleeper between New York and San Francisco (CZ-11) 6 Dbl. Bedrooms, 10 Roomettes, via N. Y. C. and P. R. R. on alternate days between New York and Chicago, thence C. B. & Q.-D. & R. G. W.-W. P. (See page 2 for details.)
 Standard Sleeper between Chicago and San Francisco (CZ-12) 16 Sections, via C. B. & Q.-D. & R. G. W.-W. P.
 Standard Sleepers between Chicago and San Francisco (CZ-14 and CZ-15) (2 cars) 6 Dbl. Bedrooms, 10 Roomettes, via C. B. & Q.-D. & R. G. W.-W. P.
 Vista Dome Chair Cars between Chicago and San Francisco (CZ-20, CZ-21 and CZ-22) (3 cars) via C. B. & Q.-D. & R. G. W.-W. P.
 Vista Dome Buffet Lounge between Chicago and San Francisco via C. B. & Q.-D. & R. G. W.-W. P. (Lounge for all passengers: Vista Dome for sleeping car passengers) (Buffet and sandwich service 6:00 A. M. to 10:00 P. M.)
 Diner between Chicago and San Francisco, via C. B. & Q.-D. & R. G. W.-W. P.

Table 2

ROYAL GORGE ROUTE
DENVER • COLORADO SPRINGS • PUEBLO • CANON CITY • SALIDA • GLENWOOD SPRINGS

READ DOWN			Issued June 1, 1952			READ UP		
No. 3 The Colo- rado Eagle	No. 1 The Royal Gorge	Miles	STATIONS Mountain Standard Time			Eleva- tion	No. 2 The Royal Gorge	No. 4 The Colo- rado Eagle
* 4 10 PM	* 8 50 AM	0	Lv DENVER, COLO.	Ar	5280	* 3 30 PM	* 9 40 AM	
		2.0	Ar Burnham	Ar	5227			
		7.7	Ar Englewood	Ar				
	9 10 AM	10.3	Ar Littleton	Ar	5372	3 07 PM	b.	
a		13.5	Ar Wolhurst	Ar	5419		b.	
a		17.3	Ar Acequia	Ar	5533		b.	
a		20.7	Ar Louviers-Gann	Ar	5675		b.	
a	f 9 29 "	24.5	Ar Sedalia	Ar	5835	f 2 45 PM	b.	
a		32.5	Ar Castle Rock	Ar	6218	f 2 35 "	b.	
a	f 9 55 "	42.9	Ar Larkspur	Ar	6668	f 2 24 "	b.	
a	f 10 01 "	46.9	Ar Greenland	Ar	6919		b.	
a	f 10 15 "	52.2	Ar Palmer Lake	Ar	7237	2 13 PM	b.	
a	f 10 21 "	55.9	Ar Monument	Ar	6972	2 05 "	b.	
a		61.9	Ar Husted	Ar	6596		b.	
a		70.3	Ar Pikeview	Ar	6199		b.	
a		74.9	Ar COLORADO SPRINGS † (Pikes Peak)	Lv	5989	• 1 32 PM	• 8 01 AM	
• 5 48 PM	• 10 45 AM	74.9	Lv COLORADO SPRINGS	Ar	5989	• 1 27 "	• 8 01 "	
• 5 48 "	f 11 08 "	87.9	Ar Fountain	Ar	5577	1 06 "	b.	
a		93.4	Ar Buttes	Ar	5386		b.	
a		99.0	Ar Henkel	Ar	5232		b.	
a		105.3	Ar Pinon	Ar	5038		b.	
a		111.5	Ar Eden	Ar	4882		b.	
6 40 PM	11 50 AM	119.4	Ar PUEBLO † (See Table No. 4 for Pueblo-Alamosa Service)	Lv	4668	12 25 PM	7 10 AM	
	12 10 PM	119.4	Lv PUEBLO	Ar	4668	12 05 "		
		134.6	Ar Swallows	Ar	4887			
		139.6	Ar Hobson	Ar	4952			
		144.4	Ar Concrete	Ar	5023			
	f 12 47 PM	145.8	Ar Portland	Ar	5051	f 11 20 AM		
	12 57 "	151.9	Ar Florence	Ar	5199	11 12 "		
	1 18 "	160.0	Ar CANON CITY †	Ar	5344	10 58 "		
	1 33 "	166.2	Ar HANGING BRIDGE	Lv	5494	10 36 "		
			<i>Royal Gorge, Canyon of the Arkansas</i>					
	1 43 PM	166.2	Lv HANGING BRIDGE	Ar	5494	10 26 AM		
	f 1 56 "	171.2	Ar Parkdale	Ar	5800	f 10 14 "		
	2 17 "	184.1	Ar Texas Creek	Ar	6210	9 53 "		
	f 2 30 "	191.7	Ar Cotopaxi	Ar	6385	f 9 40 "		
	f 2 37 "	195.7	Ar Pleasanton	Ar	6481	f 9 34 "		
		198.1	Ar Vallie	Ar	6534			
		203.4	Ar Howard	Ar	6718			
	3 15 PM	215.1	Ar SALIDA †	Lv	7050	9 00 AM		
	3 25 "	215.1	Lv SALIDA	Ar	7050	8 45 "		
		222.2	Ar Brown Canon	Ar	7324			
		232.8	Ar Nathrop	Ar	7696			
	4 08 PM	240.3	Ar Buena Vista	Ar	7968	8 05 AM		
		248.0	Ar Riverside	Ar	8374			
	f 4 39 PM	257.3	Ar Yale	Ar	8943	f 7 42 AM		
	5 07 "	271.0	Ar Malta (Mt. Elbert—14,431 Ft.)	Lv	9580	7 25 "		
	▲ 5 15 PM	271.0	Lv Malta	Ar	9580	▲ 7 15 AM		
	▲ 5 45 "	275.8	Ar LEADVILLE	Lv	10200	▲ 6 45 "		
		275.8	Lv LEADVILLE	Ar	10200	▲ 8 05 AM		
	▲ 4 20 PM	271.0	Lv LEADVILLE	Lv	9580	▲ 7 35 "		
		271.0	Lv Malta	Ar	9580	7 25 AM		
	5 37 "	281.0	Ar Tennessee Pass	Ar	10221	7 03 "		
	f 5 59 "	288.7	Ar Pando	Ar	9209	f 6 36 "		
	f 6 14 "	293.9	Ar Red Cliff	Ar	8608	f 6 18 "		
		296.1	Ar Belden	Ar	8304			
	6 40 PM	302.0	Ar Minturn	Lv	7825	6 00 AM		
	6 50 "	302.0	Lv Minturn	Ar	7825	5 55 "		
	f 7 00 "	308.0	Ar Avon	Ar	7465	f 5 33 "		
	f 7 14 "	319.1	Ar Wolcott	Ar	6975	f 5 15 "		
	7 28 "	329.0	Ar Eagle	Ar	6598	5 02 "		
	f 7 37 "	335.8	Ar Gypsum	Ar	6325	f 4 52 "		
		341.9	Ar DOTSERO	Ar	6155			
		350.0	Ar Shoshone	Ar	6119			
	8 27 PM	360.1	Ar GLENWOOD SPRINGS, COLO.	Lv	5758	4 10 AM		

Streamlined

Diesel-Power

See Page 3 for condensed schedule of the Colorado Eagle, Pueblo to St. Louis

Diesel-Power

The Arkansas River

Eagle River

Streamlined

Diesel-Power

See Page 3 for condensed schedule of the Colorado Eagle, St. Louis to Pueblo

See Page 7 for explanation of references

(See Table 6 for Glenwood Springs-Aspen bus service.)

See Page 7 for explanation of references

(See Table 6 for Glenwood Springs-Aspen bus service.)

ROYAL GORGE ROUTE

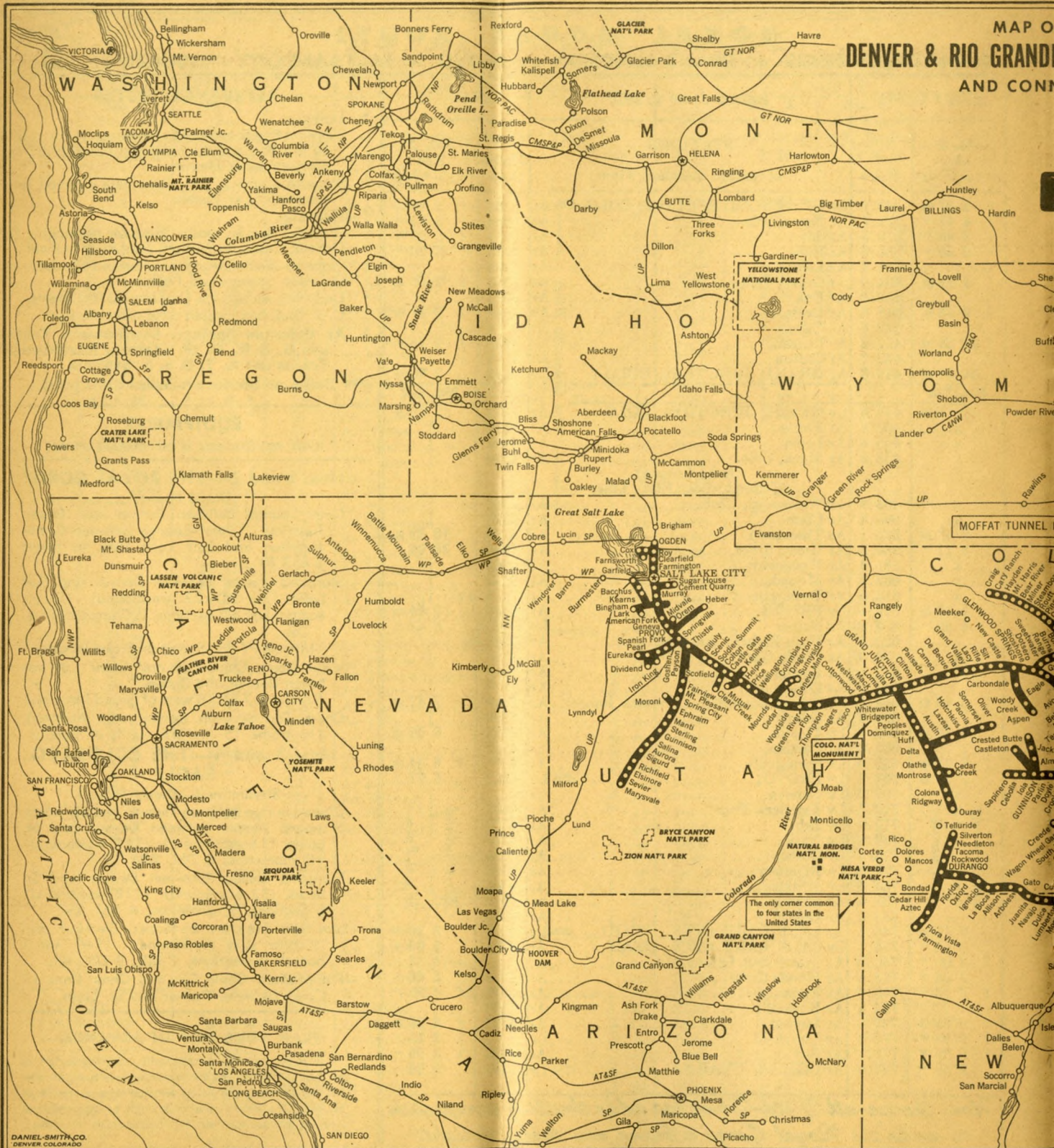
GLENWOOD SPRINGS • GRAND JUNCTION • PROVO • SALT LAKE CITY • OGDEN

**Table
2**

READ DOWN		Issued June 1, 1952		READ UP		REFERENCE NOTES	
No. 1 The Royal Gorge	Miles	STATIONS Mountain Standard Time		Eleva- tion	No. 2 The Royal Gorge		
* 8 27 PM	360.1	Lv GLENWOOD SPRINGS, COLO.	Ar	5758	* 4 10 AM	* Daily.	
f 8 41 "	372.7	Ar New Castle	Ar	5562	f 3 34 "	a Stops on flag to receive pay passengers for points on Mo. Pac. and discharge pay passengers from connections at Denver.	
f 8 48 "	379.5	Ar Silt	Ar	5441	f 3 27 "	b Stops to discharge pay passengers received from connections at Pueblo.	
9 10 "	386.6	Ar Rifle	Ar	5310	3 20 "	f Flag stop.	
	391.4	Ar Lacy	Ar	5239		j Stops on flag to receive revenue passengers for Denver, Colorado Springs, Pueblo or beyond.	
f 9 28 PM	404.0	Ar Grand Valley	Ar	5104	f 2 56 AM	x Stops to discharge pay passengers from Denver, Colorado Springs and Pueblo.	
	408.8	Ar Una	Ar	5025		▲ Daily bus service via Continental Trailways.	
f 9 43 PM	416.6	Ar DeBeque	Ar	4945	f 2 41 AM	‡ U. S. Mail box located on station platform.	
	432.6	Ar Cameo	Ar	4774		● At Colorado Springs, Southbound Trains use D. & R. G. W. Station: Northbound Trains use A. T. & S. F. Station.	
f 10 25 PM	437.2	Ar Palisade	Ar	4739	f 2 15 AM	☞ Rail-Auto Service available at this point.	
	442.7	Ar Clifton	Ar	4713			
10 50 PM	449.6	Ar GRAND JUNCTION, COLO. †	Lv	4583	2 00 AM		
No. 7-1					No. 8-2		
1 10 AM	449.6	Lv GRAND JUNCTION, COLO.	Ar	4583	12 15 AM		
.x.	460.5	Ar Fruita	Ar	4510			
.x.	465.6	Ar Loma	Ar	4525			
.x.	468.9	Ar Mack, Colo.	Ar	4540			
		(Ruby Canyon)					
		(Colorado-Utah State Line)					
.x.	488.4	Ar Westwater, Utah	Ar	4340			
.x.	504.4	Ar Cisco	Ar	4375			
2 43 AM	528.1	Ar Thompson	Ar	5160	10 39 PM	Nos. 1 and 2—THE ROYAL GORGE (Diesel Power) Diner-Lounge between Denver and Grand Junction. (Diner-Lounge between Grand Junction and Salt Lake City in trains 7 and 8)	
f 3 11 "	555.2	Ar Green River	Ar	4080	f 10 06 "	Standard sleeper between Denver and Salt Lake City (D-22 westbound) (D-10 eastbound) 10 Sections. 2 Compartments, 1 DR. (In trains 7 and 8 west of Grand Junction)	
.x.	581.4	Ar Woodside	Ar	4645		Vista Dome Chair Car and Chair Car between Denver and Ogden. (In trains 7 and 8 west of Grand Junction)	
.x.	603.2	Ar Mounds	Ar	5442		Chair Car between Denver and Alamosa. (In trains 15 and 16 south of Pueblo)	
.x.	613.0	Ar Wellington	Ar	5415			
4 37 AM	619.1	Lv PRICE †	Ar	5546	8 54 PM	Nos. 3 and 4—THE COLORADO EAGLE (Streamlined—Diesel Power) Diner-Lounge between Denver and St. Louis. Standard sleeper between Denver and St. Louis (31 eastbound) (111 westbound) 10 roomettes, 6 Dbl. BR. Standard Sleeper between Denver and St. Louis (32 eastbound) (112 westbound) 6 Sections, 6 roomettes, 4 Dbl. BR. Standard Sleeper between Denver and Wichita (34 eastbound) (114 westbound) 8 Sections, 1 DR., 3 Dbl. BR. Planetarium Chair Car and Chair Cars (3 Cars) between Denver and St. Louis.	
4 50 "	626.5	Ar Helper	Lv	5840	8 42 "		
	628.8	Ar Utah Railway Junction	Ar	5996			
.x.	630.3	Ar Castle Gate	Ar	6120			
	639.3	Ar Kyune	Ar	7013			
	644.5	Ar Colton	Ar	7170			
f 5 46 AM	651.5	Ar Soldier Summit † (Wasatch Range)	Ar	7440	f 7 47 PM		
	661.0	Ar Gilluly	Ar	6529			
6 42 AM	680.9	Lv Thistle	Ar	5033	6 55 PM		
	684.6	Ar Castilla	Ar	4912			
f 7 01 AM	695.8	Lv Springville	Ar	4555	f 6 34 PM		
7 15 AM	701.2	Lv PROVO †	Lv	4512	6 27 "		
.x.	707.2	Lv Geneva	Ar				
.x.	713.7	Lv American Fork	Ar	4563			
.x.	717.0	Lv Lehi	Ar	4550			
.x.	722.8	Lv Nash	Ar	4475			
.x.	725.5	Lv Olivers	Ar	4453			
.x.	728.6	Lv Riverton	Ar	4408			
.x.	734.5	Lv Midvale	Ar	4365			
	738.4	Ar Murray	Ar	4310			
	742.5	Ar Roper	Ar	4320			
8 15 AM	745.1	Ar SALT LAKE CITY, UTAH †	Lv	4224	5 30 PM		
8 45 "	745.1	Lv SALT LAKE CITY, UTAH	Ar	4224	5 00 "		
f 9 00 "	750.9	Ar North Salt Lake	Ar		f 4 44 "		
f 9 04 "	753.6	Ar Woods Cross	Ar	4259	f 4 40 "		
f 9 13 "	760.6	Ar Farmington	Ar	4231	f 4 30 "		
	764.4	Ar Kaysville	Ar	4262			
f 9 23 AM	767.2	Ar Layton	Ar	4329	f 4 20 PM		
f 9 28 "	770.8	Ar Clearfield	Lv		f 4 13 "		
f 9 35 "	775.1	Ar Roy	Ar	4390	f 4 05 "		
9 50 "	782.0	Ar OGDEN, UTAH †	Lv	4293	3 50 "		

Now, the see-all Vista-Dome car adds thrilling perspective to make the Royal Gorge a brand new travel delight.

MAP OF
DENVER & RIO GRANDI
AND CONN



DANIEL SMITH CO.
DENVER COLORADO

F THE
E WESTERN RAILROAD
NECTIONS

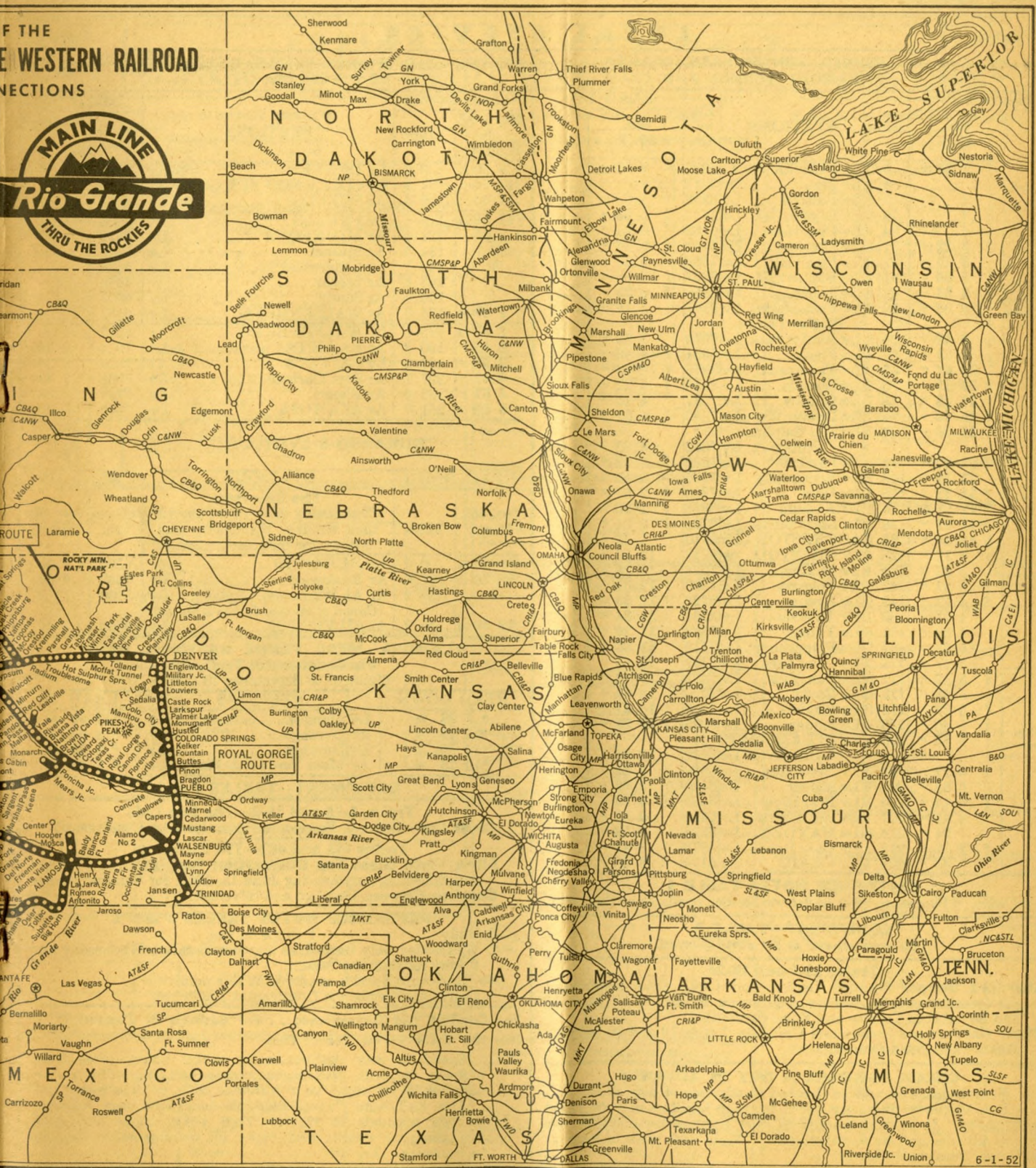


Table 3		LOCAL SERVICE						Table 4	
		DENVER, WINTER PARK, GRANBY, STEAMBOAT SPRINGS AND CRAIG			DENVER, COLO. SPRINGS, PUEBLO, WALSENBURG AND ALAMOSA				
READ DOWN		READ UP						READ UP	
No. 19-9	Miles	STATIONS		Elevation	No. 10-20	STATIONS		Elevation	No. 16-2 The San Luis
* 7 30 PM	0.0	Lv DENVER	Ar	5280	* 7 20 AM	Lv DENVER	Ar	5280	* 3 30 PM
f	4.2	Lv Zuni	Lv	5211	f 7 03 AM	Lv COLORADO SPR'GS	Ar	5989	1 27 "
f	7.1	Lv Ralston	Lv	5258	f 6 53 "	Ar PUEBLO	Lv	4668	12 25 "
f	12.4	Lv Leyden Jct.	Lv	5617	f 6 24 "	Lv PUEBLO	Ar	4668	*11 40 AM
f	24.4	Lv Plainview	Lv	6782	f 6 04 "	Ar MINNEQUA	Lv	4822	f11 10 "
f 8 22 "	31.3	Lv Crescent	Lv	7441	f 5 47 "	Ar Marnel	Lv	5130	f
8 44 "	37.0	Lv Pine Cliff	Lv	7966	f 5 35 "	Ar Cedarwood	Lv	5606	f
9 00 "	41.7	Lv Rollinsville	Lv	8367	f 5 23 "	Ar Lascar	Lv	5698	f
f 9 14 "	46.8	Lv Tolland	Lv	8886	f 5 18 "	Ar Sandy	Lv	6007	f
9 26 "	50.0	Lv East Portal	Lv	9197		Ar WALSENBURG	Lv	6187	10 06 AM
		Moffat Tunnel							
9 42 "	56.8	Lv Winter Park	Lv	9076	5 00 "	Lv WALSENBURG	Ar	6187	10 06 AM
9 58 "	62.1	Lv Fraser	Lv	8561	f 4 40 "	Ar LA VETA	Lv	7024	9 35 "
10 07 "	65.9	Lv Tabernash	Lv	8318	f 4 30 "	Lv LA VETA	Ar	7024	9 30 "
f 10 13 "	70.2	Lv Elkdale	Lv	8156	f 4 22 "	Ar Fort Garland	Lv	7936	7 43 "
10 35 "	75.7	Lv Granby	Lv	7937	f 4 10 "	Ar Blanca	Lv	7751	7 33 "
f 10 40 "	79.7	Lv Drowsy Water	Lv	7790	f 4 01 "	Ar ALAMOSA	Lv	7546	7 00 "
10 50 "	86.1	Lv Hot Sulphur Springs	Lv	7662	3 50 "				
f 11 00 "	91.0	Lv Parshall	Lv	7589	f 3 32 "				
11 28 "	103.2	Lv Kremmling	Lv	7322	f 3 15 "				
f 11 33 "	105.8	Lv Gore	Lv	7322	f 2 55 "				
12 01 AM	116.1	Lv Radium	Lv	6858	f 2 28 "				
f 12 21 "	126.1	Lv State Bridge	Lv	6728	f 2 01 "				
12 40 "	128.5	Ar ORESTOD	Lv	6710	1 58 "				
3 12 "	128.5	Lv ORESTOD	Ar	6710	12 50 "				
3 32 "	134.1	Lv McCoy	Lv	7228	12 28 "				
f 3 57 "	142.5	Lv Volcano	Lv	7807	f 12 01 "				
f 4 17 "	149.9	Lv Egeria	Lv	8123	f 11 39 PM				
4 21 "	153.1	Lv Toponas	Lv	8264	11 34 "				
4 38 "	161.6	Lv Yampa	Lv	7882	11 20 "				
5 03 "	167.7	Lv Phippsburg	Lv	7413	11 00 "				
5 17 "	171.2	Lv Oak Creek	Lv	7397	10 45 "				
f 5 19 "	171.8	Lv Oak Hills	Lv	7372	f 10 43 "				
5 23 "	173.6	Lv Routt	Lv	7279	10 41 "				
f 5 27 "	175.0	Lv Haybro	Lv	7169	f 10 37 "				
f 5 46 "	183.6	Lv Sidney	Lv	6823	f 10 23 "				
6 15 "	190.9	Lv STEAMBOAT SPRINGS	Lv	6682	10 04 "				
f 6 27 "	197.5	Lv Brookston	Lv	6529	f 9 56 "				
6 35 "	200.9	Lv Milner	Lv	6480	9 49 "				
6 44 "	206.3	Lv Bear River	Lv	6425	f 9 42 "				
6 49 "	207.7	Lv Mt. Harris	Lv	6413	9 35 "				
7 04 "	214.8	Lv HAYDEN	Lv	6328	9 26 "				
f 7 12 "	219.2	Lv Cary Ranch	Lv	6278	f 9 17 "				
7 45 "	231.4	Ar CRAIG	Lv	6174	* 9 00 "				

REFERENCE NOTES TABLE 3

* Daily. f Flag stop. Rail-Auto Service available at this point.

EQUIPMENT—TABLE 3
(All equipment is air conditioned.)

Trains 19-9 and 10-20

Standard Sleeper between Denver and Craig (D-3 westbound) (D-4 eastbound) 12 Sections, 1 Drawing Room. (In Trains 19 and 20 between Denver and Bond-Orestod).

Chair Car between Denver and Craig (In Trains 19 and 20 between Denver and Bond-Orestod).

CHECK BAGGAGE A DAY IN ADVANCE

Your baggage should be checked in advance of departure. Due to heavy passenger travel baggage facilities may be taxed to capacity. It is good practice to offer baggage for checking one day in advance and we so recommend. Mark each piece of baggage with your name and address.

Table 5		DURANGO-SILVERTON			
READ DOWN		STATIONS		READ UP	
No. 461 Mixed	Miles	The Silverton (Wednesday only until June 15, then Sunday, Wednesday and Friday for Summer Season.)		Elevation	No. 462 Mixed
9 15 AM	0.0	Lv DURANGO	Ar	6520	5 00 PM
10 26 "	17.6	Ar Rockwood	Lv	7367	3 53 "
f	26.5	Ar Ah Wilderness (Tefft)	Lv	7900	f
		(Canon of the Rio de Las Animas)			
12 40 PM	45.2	Ar SILVERTON	Lv	9300	1 40 PM

ALAMOSA—MESA VERDE NATIONAL PARK
Via Continental Trailways
(June 10 to September 10, 1952)

READ DOWN		STATIONS		READ UP	
7 25 PM		Lv Alamosa	Ar	12 40 PM	
11 35 PM		Ar Durango	Lv	8 00 AM	
10 30 AM		Lv Durango	Ar	8 30 PM	
12 15 PM		Ar Mesa Verde Ntl. Pk.	Lv	6 45 PM	

EQUIPMENT—TABLES 4 and 5

Trains 1-15 and 16-2—The San Luis
Chair Car—Between Denver and Alamosa (Air Conditioned)

Trains 461 and 462—The Silverton
Silver Vista Glass Top Observation Car—Between Durango and Silverton, commencing June 15, 1952, for Summer Season
Coach—Between Durango and Silverton.

REFERENCE NOTES TABLES 4 and 5

* Daily. f Stops on flag.
 † Wednesday only until June 15, then Sunday, Wednesday and Friday for Summer Season.
 Rail-Auto Service available at this point.
 ^ Daily Bus Service via Continental Trailways.

For Comfort and Convenience . . . For Business or Pleasure . . .
Use the RAIL-AUTO Travel Plan

Speed to your destination in restful luxury—free from highway hazards. Arrive on time—then step into a new automobile to make your business calls or side-trips.

The Rail-Auto Travel Plan combines the best features of two methods of travel. Your ticket agent can give you complete details and make all arrangements for you in advance. Try it!

FREIGHT SERVICE ONLY

COLORADO AND NEW MEXICO LINES

Table 6—ASPEN BRANCH

Glenwood-Aspen Stages
Rail Tickets Not Honored

Bus	Bus	Miles	STATIONS	Bus	Bus
* 8 45 AM	* 2 30 PM	0	Lv Glenwood Springs... Ar	*12 45 PM	* 5 30 PM
		7.8	Lv Cattle Creek... Lv		
9 25 AM	2 55 PM	12.9	Lv Carbondale... Lv	12 25 PM	5 10 PM
		19.3	Lv Leon... Lv		
		21.9	Lv Emma... Lv		
		32.8	Lv Woody Creek... Lv		
10 20 AM	4 00 PM	41.2	Ar Aspen... Lv	11 15 AM	4 10 PM

* Daily.

Table 7—CREEDE BRANCH

Freight Service only.	Miles	STATIONS	Freight Service only.
	0	Lv Alamosa... Ar	
	17.3	Monte Vista... Lv	
	31.1	Del Norte... Lv	
	60.4	Wagon Wheel Gap... Lv	
	69.0	Ar Creede... Lv	

Table 8—NORTH FORK BRANCH

Freight Service only.	Miles	STATIONS	Freight Service only.
	0	Delta... Lv	
	8.0	Austin... Lv	
	24.9	Hotchkiss... Lv	
	33.1	Paonia... Lv	
	42.5	Somerseset... Lv	

Table 9—WALSENBURG-TRINIDAD

Freight Service only.	Miles	STATIONS	Freight Service only.
	0	Walsenburg... Lv	
	8.0	Mayne... Lv	
	10.6	Monson... Lv	
	19.2	Lynn... Lv	
	26.3	Ludlow... Lv	
	40.8	Trinidad... Lv	

Table 10—LOMA BRANCH

Freight Service only.	Miles	STATIONS	Freight Service only.
	0	Walsenburg... Lv	
	17.0	Alamo No. 2... Lv	

Table 11—MANITOU BRANCH

Freight Service only.	Miles	STATIONS	Freight Service only.
	0	Colorado Springs... Lv	
	2.7	Colorado City... Lv	

Table 12—ALAMOSA BRANCH

Freight Service only.	Miles	STATIONS	Freight Service only.
	0	Alamosa... Lv	
	13.6	Mosca... Lv	
	20.1	Hooper... Lv	

NARROW GAUGE LINES

Table 13—SALIDA-SAPINERO BRANCH

Freight Service only.	Mls.	STATIONS	Freight Service only.
	0	Salida... Lv	
	5.0	Poncha Junction... Lv	
	10.9	Mears Junction... Lv	
	18.9	Gary's... Lv	
	25.6	Marshall Pass... Lv	
	33.4	Chester... Lv	
	42.1	Sargent... Lv	
	50.4	Crookton... Lv	
	53.9	Doyle... Lv	
	61.7	Parlin... Lv	
	73.5	Gunnison... Lv	
	85.0	Kezar... Lv	
	92.1	Cebolla... Lv	
	98.9	Sapinero... Lv	

Table 14—CRESTED BUTTE BRANCH

Freight Service only.	Miles	STATIONS	Freight Service only.
	0	Gunnison... Lv	
	10.8	Almont... Lv	
	16.0	Jack's Cabin... Lv	
	27.7	Crested Butte... Lv	

Table 15—BALDWIN BRANCH

Freight Service only.	Miles	STATIONS	Freight Service only.
	0	Gunnison... Lv	
	15.4	Castleton... Lv	

Table 16—MONTROSE-CEDAR CREEK BRANCH

Freight Service only.	Miles	STATIONS	Freight Service only.
	0	Montrose... Lv	
	10.2	Cedar Creek... Lv	

Table 17—OURAY BRANCH

Freight Service only.	Miles	STATIONS	Freight Service only.
	0	Montrose... Lv	
	12.0	Colona... Lv	
	24.0	Ridgway... Lv	
	34.0	Ouray... Lv	

Table 18—ALAMOSA-DURANGO

Freight Service only.	Miles	STATIONS	Freight Service only.
	0.0	Alamosa... Lv	
	14.5	La Jara... Lv	
	21.6	Romeo... Lv	
	28.6	Antonito... Lv	
	54.4	Sublette... Lv	
	58.8	Toltec... Lv	
	66.7	Osier... Lv	
	78.9	Cumbres... Lv	
	92.4	Chama... Lv	
	111.8	Monero... Lv	
	117.9	Lumberton... Lv	
	121.6	Dulce... Lv	
	138.7	Gato... Lv	
	151.9	Arboles... Lv	
	159.3	Allison... Lv	
	174.0	Ignacio... Lv	
	199.8	Durango... Lv	

Table 19—FARMINGTON BRANCH

Freight Service only.	Miles	STATIONS	Freight Service only.
	0	Durango... Lv	
	10.7	Bondad... Lv	
	29.2	Cedar Hill... Lv	
	35.1	Aztec... Lv	
	40.8	Flora Vista... Lv	
	50.0	Farmington... Lv	

UTAH LINES

Table 20—MARYSVALE BRANCH

Freight Service only.	Miles	STATIONS	Freight Service only.
	0	Thistle... Lv	
	7.7	Pines... Lv	
	14.8	Indianola... Lv	
	23.3	Hill Top... Lv	
	27.2	Milburn... Lv	
	28.5	Oak Creek... Lv	
	32.0	Fairview... Lv	
	38.6	Mount Pleasant... Lv	
	44.1	Spring City... Lv	
	53.4	Ephraim... Lv	
	60.8	Manti... Lv	
	66.3	Sterling... Lv	
	72.9	Gunnison... Lv	
	79.2	Axtell... Lv	
	82.6	Redmond... Lv	
	86.4	Salina... Lv	
	91.6	Aurora... Lv	
	96.3	Sigurd... Lv	
	100.1	Kema... Lv	
	103.7	Richfield... Lv	
	111.7	Elsinore... Lv	
	116.5	Joseph... Lv	
	120.6	Sevier... Lv	
	132.2	Marysvale... Lv	

Table 21—MORONI SPUR

Freight Service only.	Miles	STATIONS	Freight Service only.
	0	Manti... Lv	
	7.4	Ephraim... Lv	
	18.7	Moroni... Lv	

Table 22—TINTIC BRANCH

Freight Service only.	Miles	STATIONS	Freight Service only.
	0	Provo... Lv	
	7.5	Springville... Lv	
	13.2	Spanish Fork... Lv	
	21.5	Payson... Lv	
	27.8	Santaquin... Lv	
	35.4	Goshen... Lv	
	51.1	Dividend... Lv	
	55.4	Eureka... Lv	

Table 23—GOSHEN VALLEY BRANCH

Freight Service only.	Miles	STATIONS	Freight Service only.
	0	Dividend... Lv	
	2.7	Flora... Lv	
	5.2	Iron King... Lv	
	3.1	Eunice... Lv	
	6.5	Pearl... Lv	

Table 24—SUGAR HOUSE SPUR

Freight Service only.	Miles	STATIONS	Freight Service only.
	0	Salt Lake City... Lv	
	0	Roper... Lv	
	2.7	Sugar House... Lv	
	7.6	Le Grand... Lv	
	8.0	Cement Quarry... Lv	

**FREIGHT SERVICE ONLY
UTAH LINES (Continued)**

Table 25—PROVO CANYON BRANCH

Miles	STATIONS	Freight Service only.
0	Provo	
1.1	Smoot	
5.8	Caryhurst	
9.3	Nunn's	
10.6	Upper Falls	
11.8	Vivian Park	
17.2	Wallsburg	
24.2	Charleston	
27.9	Heber	

Table 26—SUNNYSIDE BRANCH

Miles	STATIONS	Freight Service only.
0	Mounds	
6	Banning	
13	Columbia Junction	
14	Dragerton	
18	Sunnyside	

Table 27—PLEASANT VALLEY BRANCH

Miles	STATIONS	Freight Service only.
0	Colton	
15.1	Scofield	
21.0	Clear Creek	

Table 28—BINGHAM-GARFIELD BRANCHES

Miles	STATIONS	Freight Service only.
0	Midvale	
5.0	Welby	
0	Welby	
6.0	Kearns	
.3	Bacchus	
15.1	Garfield	
15.4	Sands Junction	
16.8	Garfield Junction	
18.6	Sands	
17.5	Garfield Smelter	
5.0	Welby	
14.1	Bingham	

□Interchange with Western Pacific, carload freight only.

PROTECT YOUR LUGGAGE
Identify Your Baggage by Placing Your Name and Address Inside and Outside
BUY ROUND TRIP TICKETS AND SAVE
TRAVEL ON CREDIT — CONSULT AGENT

**CONDENSED SCHEDULES
VIA CONNECTING LINES**

BURLINGTON LINES

* 4 00 PM	* 7 15 PM	* 8 45 PM	Lv Denver (mst)	Ar	* 8 10 AM	* 8 20 AM	* 8 30 AM
12 04 AM	3 40 AM	6 55 AM	Ar Lincoln (cst)	Lv	12 03 "	1 19 "	1 52 "
1 10 "	4 55 "	8 30 "	Ar Omaha	Lv	10 20 PM	11 59 PM	12 40 "
9 05 "	1 30 PM	9 30 PM	Ar Chicago	Lv	11 00 AM	3 30 "	5 00 PM

COLORADO & SOUTHERN-FT. WORTH & DENVER RYS.

* 7 10 PM	* 12 01 PM	Lv Denver (mst)	Ar	* 7 00 AM	* 8 25 PM
9 10 "	1 40 "	Lv Colorado Springs	Ar	5 15 "	6 30 "
10 20 "	2 31 "	Lv Pueblo	Ar	4 10 "	5 05 "
5 55 "	6 00 AM	Ar Fort Worth (cst)	Lv	2 00 PM	10 35 "
7 10 "	7 15 "	Ar Dallas	Lv	1 00 "	9 15 "
* 5 00 PM	* 9 25 AM	Lv Dallas	Ar	* 12 37 PM	* 9 00 PM
9 00 "	1 35 PM	Ar Houston	Lv	8 35 AM	5 00 "

MISSOURI PACIFIC R. R.

* 6 50 PM	Lv Pueblo (mst)	Ar	* 7 00 AM
6 40 AM	Ar Kansas City (cst)	Lv	9 10 PM
12 01 PM	Ar St. Louis	Lv	4 00 PM

ROCK ISLAND LINES

* 10 00 PM	* 1 00 PM	Lv Denver (mst)	Ar	* 8 25 AM	
	12 45 "	Lv Colorado Springs	Ar	8 35 "	
4 21 PM	10 27 "	Lv Lincoln (cst)	Ar	12 20 "	
6 15 "	11 39 "	Ar Omaha	Lv	11 06 PM	
11 10 "	2 41 AM	Ar Des Moines	Lv	7 55 "	
	7 15 PM	Ar St. Paul	Lv	12 25 PM	
	8 00 "	Ar Minneapolis	Lv	12 01 "	
	7 50 AM	8 50 AM	Ar Chicago	Lv	1 55 PM

SOUTHERN PACIFIC COMPANY

* 8 48 PM	* 5 22 PM	* 8 15 AM	Lv Ogden (mst)	Ar	* 6 25 AM	* 8 40 AM	* 6 30 PM
6 38 AM	1 19 AM	10 40 PM	Lv Reno (pst)	Ar	6 39 PM	10 51 PM	2 55 AM
11 32 "	5 44 AM	4 15 AM	Ar Sacramento	Lv	1 40 "	6 25 "	9 15 PM
1 35 PM	7 31 "	6 47 "	Ar Oakland	Lv	11 38 AM	4 37 "	6 39 "
2 20 "	8 15 "	7 35 "	Ar San Francisco	Lv	11 00 "	4 00 "	6 00 "
* 8 45 PM	* 8 45 PM	* 6 57 AM	Lv Oakland	Ar	* 6 25 AM		* 5 40 PM
	6 50 "	Lv Sacramento	Ar		* 5 20 PM		
2 15 AM	2 15 AM	11 17 "	Ar Fresno	Lv	1 15 AM	1 17 "	1 17 PM
10 45 "	10 45 "	6 25 PM	Ar Los Angeles	Lv	8 40 PM	6 20 AM	6 20 AM
* 6 45 PM	* 8 00 PM	* 7 15 AM	Lv San Francisco	Ar	* 8 00 PM	* 5 45 AM	* 5 00 PM
3 00 AM	4 58 AM	2 37 PM	Ar Santa Barbara	Lv	10 44 PM	9 15 PM	9 35 AM
5 45 "	8 00 "	5 00 "	Ar Los Angeles	Lv	8 00 "	6 45 PM	7 15 AM
* 7 30 PM	* 5 00 PM	* 7 45 AM	Lv San Francisco	Ar	* 9 15 AM	* 9 20 PM	* 11 15 PM
8 00 "	5 28 "	8 15 "	Lv Oakland Pier	Ar	8 40 "	8 45 "	10 43 "
8 45 "	9 30 AM	11 15 PM	Ar Portland	Lv	4 45 PM	10 10 "	7 45 AM

UNION PACIFIC R. R.

* 10 15 PM	* 6 20 PM	* 9 30 AM	Lv Salt Lake City (mst)	Ar	* 6 10 AM	* 5 00 PM	* 4 45 AM
6 55 AM	1 15 AM	7 10 PM	Ar Las Vegas (pst)	Lv	7 55 PM	5 30 AM	6 30 PM
3 00 PM	10 40 "	6 00 AM	Ar Los Angeles	Lv	12 01 "	7 00 PM	10 30 AM
* 7 15 PM	* 6 00 PM	* 5 30 PM	Lv Salt Lake City (mst)	Ar	* 8 55 AM	* 10 00 PM	* 8 00 AM
8 05 "	6 50 "	6 25 "	Lv Ogden	Ar	7 55 "	9 10 "	7 00 "
	7 20 AM		Ar Spokane (pst)	Lv		9 00 PM	
4 00 PM	6 00 "		Ar Portland	Lv	8 10 AM	9 45 "	
8 05 PM	11 01 AM		Ar Tacoma	Lv	1 15 AM	5 52 PM	
9 15 "	11 59 "		Ar Seattle	Lv	11 45 PM	4 45 "	

WESTERN PACIFIC R. R.

* 10 40 PM	* 8 30 AM	Lv Salt Lake City (mst)	Ar	7 45 PM	* 5 20 AM
12 55 "	3 28 "	Lv Sacramento (pst)	Lv	11 27 "	12 35 PM
1 53 "	4 32 "	Ar Stockton	Lv	10 23 "	11 40 AM
4 50 "	7 35 "	Ar San Francisco	Lv	* 7 30 "	9 00 "

Reference Notes: * Daily. mst Mountain Standard Time.
cst Central Standard Time. pst Pacific Standard Time.
• Joint service via G.N.-N.P.-U.P.
• Leave Salt Lake City and San Francisco Sunday, Wednesday and Friday.
Light face figures A. M. Bold face figures P. M.

SALT LAKE CITY visitors are welcome to the free organ recitals presented daily, except Sunday, at 12 noon and 7:30 P.M., by celebrated artists in the great domed Mormon Tabernacle, famed for its superb acoustics. Sunday recitals at 8:00 A.M. and 4:00 P.M.

**YOU CAN'T LOSE
WITH
AMERICAN EXPRESS TRAVEL CHEQUES**

The safe way to carry money, Travelers Cheques are as easily spendable as cash. If lost or stolen before second signature is affixed, full amount is refunded. Buy at any Rio Grande Ticket Office.



**Meet the
PROSPECTOR**

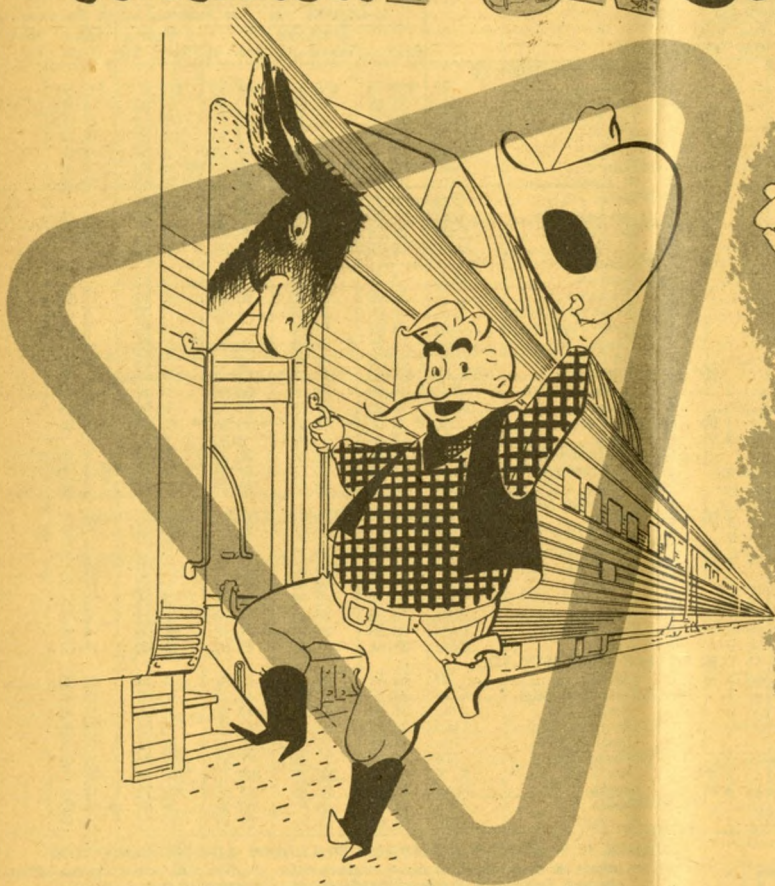
He's the blithe spirit who is everywhere on this friendliest of all western trains . . . let him cater to your whims next time you travel between
**DENVER
and
SALT LAKE CITY**

Overnight Every Night

Lv. 5:30 p.m.

Ar. 8:15 a.m.

Vacation **FUN** Starts Here!



EXTRA COMFORTS

EXTRA PLEASURES

EXTRA VIEWS

FOR ALL THE VACATION EXTRAS,
 RIDE ONE OF **4** *Rio Grande* Vista-Dome "SEE" LINERS

The California Zephyr • Daily Chicago-Denver-Glenwood Springs-Grand Junction-Salt Lake City-San Francisco. (With thru New York-San Francisco Pullman.) Daylight through the Rockies.

The Prospector • Overnight every night between Denver-Winter Park-Glenwood Springs-Rifle-Grand Junction-Salt Lake City. Same schedule both directions: Lv. 5:30 PM; Ar. 8:15 AM.

The Royal Gorge • Daily Denver-Colorado Springs-Pueblo-Canon City-Salida-Leadville-Glenwood Springs-Grand Junction-Salt Lake City-Ogden. Lv. Denver 8:50 AM; Ar. Ogden 9:50 AM.

The Colorado Eagle • Overnight every night St. Louis-Kansas City-Wichita-Pueblo-Colorado Springs-Denver.

Complete stopover privileges at any point. Rail-auto plan available at principal stations.

DENVER & RIO GRANDE WESTERN RAILROAD

No Extra Fare



INFORMATION

SPECIAL NOTICE. The time shown in this folder is subject to change without notice; is that at which trains or buses may be expected to arrive at and depart from the several stations, but their arrival or departure at the time stated is not guaranteed. This Company reserves the right to discontinue trains, change schedules, and substitute equipment, and will not be responsible for any delay or other deviation from conditions outlined in this time table.

ADJUSTMENT OF FARES. Should any difference arise between yourself and the conductor, pay the fare requested, take receipt for the amount, and refer the matter to the Passenger Traffic Manager, Denver, Colo., for adjustment.

CHILDREN under 5 years of age, free, when accompanied by parent or guardian; 5 years of age and under 12, one-half fare; 12 years of age or over, full fare.

STOPOVERS are permitted at any point enroute where trains are scheduled to stop, within limit of ticket.

FREE SIDE TRIP PUEBLO TO COLORADO SPRINGS OR DENVER AND RETURN. Side trip tickets from Pueblo to Colorado Springs and return will be furnished upon application, westbound to Mo. Pac. conductor or eastbound to D. & R. G. W. conductor into Pueblo, to holders of one-way and round-trip tickets reading over the Mo. Pac., sold at stations east of and including Geneseo, Kan., destined to Salt Lake City, Utah, or points beyond, or the reverse. Side trip tickets Pueblo to Denver and return are furnished only in connection with round-trip tickets via the Mo. Pac. sold at and destined to points shown above. The side trip coupons may also be included in original ticket at the time of purchase or secured upon presentation of the through tickets within their limits to UNION DEPOT TICKET AGENT IN PUEBLO, COLO.

FREE SIDE TRIP SALT LAKE CITY TO OGDEN AND RETURN. Available to holders of all classes of tickets sold at Denver, Colorado Springs or Pueblo, Colorado, and points east, north or south thereof to destinations beyond Salt Lake City, Utah, via Western Pacific Railroad and to destinations beyond Lynndyl, Utah, via U. P. R. R. or the reverse. This side trip from Salt Lake City, Utah, to Ogden, Utah, and return via D. & R. G. W., may be included in through ticket at time of sale, or furnished by D. & R. G. W. agent at Salt Lake City, without additional charge.

FREE SIDE TRIP DENVER TO COLORADO SPRINGS AND RETURN. Arrangements are in effect whereby passengers may obtain free side trips Denver to Colorado Springs and return on certain tickets without additional charge. Side trip tickets may be included in original ticket, or obtained upon presentation of through round-trip excursion ticket, within limit, at Denver Union Station, or any C. B. & Q., C. R. I. & P. or U. P. ticket office at Denver.

CHOICE OF ROUTES. Tickets reading via D. & R. G. W. between Denver, Colorado Springs or Pueblo and Salt Lake City or Ogden will be honored either via Canon City and the Royal Gorge or via the Moffat Tunnel Route (Dotsero Cut-off), except as otherwise provided by tariff.

DENVER & RIO GRANDE WESTERN RAIL TICKETS GOOD OPTIONALLY ON BUSES OF CONTINENTAL BUS SYSTEM, INC. Tickets good for passage over the Denver & Rio Grande Western rail line between Leadville, Colo. and Malta, Colo., will be honored on buses of Continental Bus System, Inc.

BEFORE BOARDING TRAINS ask the ticket agent, brakeman, or conductor whether the train stops at the station to which you may be ticketed. There are stations at which some trains do not stop.

STOPPING TRAINS ON SIGNAL. Where trains are scheduled to stop only on signal, passengers on trains must give advance notice to conductor, and persons intending to board trains must advise agent to that effect, in order that necessary arrangement may be perfected.

TICKET HONORING. All classes of tickets will be honored on all trains, except 25-day excursion, Drivers, Caretakers and Banana Messenger tickets will not be honored on the California Zephyr, Trains 17 and 18. **EXCEPTION:** Drivers tickets will be honored on all trains, except on the California Zephyr, Trains 17 and 18, to regular or flag stops (not conditional stops) except that Train No. 1 will stop at any station west of Pueblo where conditional stops are authorized, to discharge passengers holding Drivers tickets.

BAGGAGE. Personal baggage consisting of wearing apparel, toilet articles (except liquids) and personal effects in actual use, and necessary for the use, comfort and convenience of the passenger while on the journey, may be checked in baggage service. Money, jewelry, silverware, negotiable papers and like valuables, liquids, fragile or perishable articles, radios, household goods and any article intended for others or for sale, must not be enclosed in baggage to be checked. Carriers will not be responsible for such articles.

Passengers are urged to check all baggage except that actually needed for use enroute. They are also urged to check baggage in advance so that it may be forwarded on a preceding train. Every effort will be made to facilitate handling of baggage but the railroad does not guarantee its forwarding on the same train with the owner nor the time of its arrival at destination.

Passengers may check without additional charge 150 pounds of baggage not exceeding \$100 in value on each adult ticket and 75 pounds not exceeding \$50 in value on each child's half-fare ticket. Around the World or Trans-Pacific passengers may check without additional charge 350 pounds not exceeding \$100 in value on each adult ticket and 175 pounds not exceeding \$50 in value on each child's half-fare ticket.

Each passenger has the privilege of declaring a higher value than the free allowance on his baggage at time of checking. A nominal charge will be made for each \$100, or fraction thereof, declared in excess of the free allowance. The value of baggage checked on one ticket is limited to \$2,500. No single piece of baggage exceeding 300 pounds in weight, 72 inches in greatest dimension, or \$2,500 in value, will be accepted.

Bicycles, baby carriages, guns (not small firearms), and similar articles enumerated in the tariff, when used in connection with the journey, may be checked and included in weight and value of passenger's baggage. The maximum liability on such articles is deemed by the carriers to be not in excess of \$25 unless a higher value is separately declared and paid for at time of checking, on each shipment of such articles for each \$100, or fraction thereof, of additional value declared.

Each piece of baggage should be marked or tagged with passenger's name and address and the passenger's name and permanent address should be placed inside of each piece of baggage whether it is checked or carried on the train.

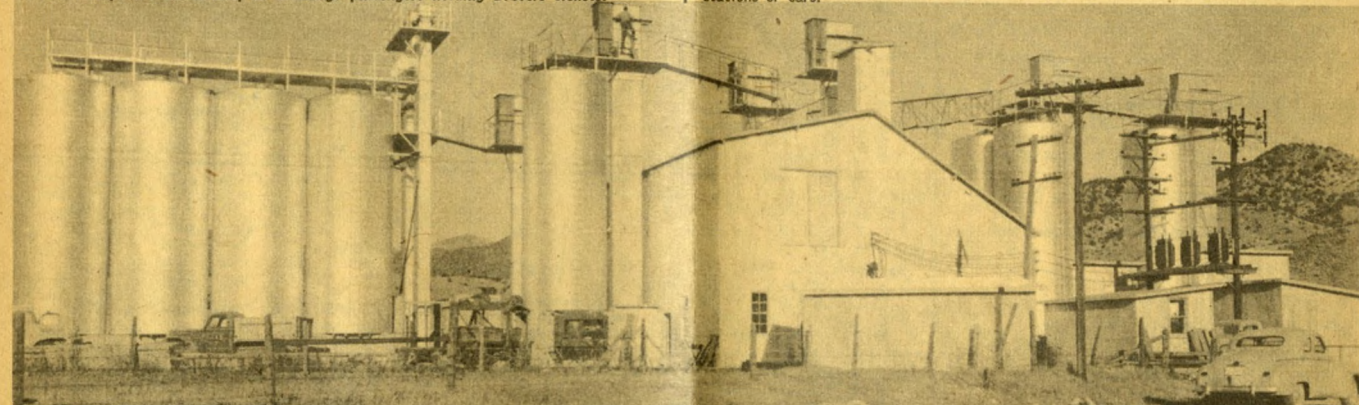
Storage charges will be assessed on baggage not claimed within 24 hours after its arrival at destination.

Dogs and other household pets may be checked in baggage service subject to tariff rules. Dogs may be checked on leash when securely muzzled and provided with close fitting harness or collar, but should be in crates or other suitable containers, and claimed immediately upon arrival at destination. When handled on trains without train baggage-men, they will be moved only when crated and then only at owner's risk. Carriers do not assume obligation to store or care for dogs at stations. Passengers must attend to feeding and watering dogs enroute and at stations. Passengers should inform themselves regarding quarantine regulations before checking dogs or other animals. Small dogs and other animals, when in baskets or other containers, or on leash and muzzled, may be taken into private room accommodations of sleeping cars.

Baggage checked to a station having no agent must be called for at the baggage car by owner upon reaching such station and duplicate checks surrendered to train baggage-man; otherwise baggage will be carried to first station beyond, where there is an agent.

Parcel rooms and parcel checking lockers are maintained in station waiting rooms at all important points.

LOST ARTICLES. Agents will assist in the recovery of lost articles. Passengers should not only give full description of the property, but should state date of loss, number of train and whether left in coach or Pullman car. All lost articles found in coaches on this line are forwarded to J. H. Tanner, Manager of Mail, Baggage and Express Traffic, Denver, Colo., and those found in sleeping cars are forwarded to The Pullman Co. Address the District Superintendent, The Pullman Company, at Denver, Colo., or Salt Lake City, Utah. No responsibility is assumed for unchecked articles left in stations or cars.



Western Feldspar Milling Co. Plant, Salida, Colorado

YOUR INDUSTRIAL OPPORTUNITY—THE ROCKY MOUNTAIN EMPIRE • The development of the natural resources of Colorado and Utah, coupled with equable climate, a stable labor market, attractive living conditions, exceptional labor recreational facilities and a dependable transportation system geared to the smooth and uninterrupted flow of materials from producer to processor to consumer, is fast bringing these two states to the forefront of industrial recognition. All inquiries with respect to industrial opportunities in such development will be promptly and confidentially handled.

E. L. BEARDSLEY
Director of Industrial Development
The Denver & Rio Grande Western RR Co.
1531 Stout Street, P. O. Box No. 2040
Denver 1, Colorado

PERSONALIZED SERVICE



Rio Grande passenger and freight representatives, listed below, will welcome an opportunity to assist you with any travel or shipping problems.

ALAMOSA, COLO.—Rio Grande Freight Depot—Phone 210
R. W. CLARK, District Freight & Passenger Agent.

ATLANTA 3, GA.—1521 Healey Bldg.—
57 Forsyth St. N. W.—Lamar 4831
R. E. KNIGHT, General Agent.

BOSTON 16, MASS.—411 Little Bldg.—
80 Boylston St.—Liberty 2-9891
C. O. TOBIAS, General Agent.

CHICAGO 3, ILL.—Suite 2321 Bankers Building—
105 West Adams St.—Randolph 6-7445
G. C. CLEGG, Eastern Traffic Manager.
J. B. WILLIAMS, Assistant Traffic Manager.
C. J. DOMBROW, General Passenger Agent.
D. J. LEWIS, Commercial Agent.
W. H. MESTER, City Passenger Agent.
E. J. CERNY, City Ticket Agent.
J. A. BURKE, Perishable Freight Agent.
B. F. GALLAGHER, Traveling Freight & Passenger Agent.
M. L. COLBY, Traveling Freight & Passenger Agent.
R. W. BAILEY, Traveling Freight & Passenger Agent.
S. E. DAVIS, City Freight Agent.
W. R. KINDER, City Freight Agent.
W. P. MENARD, City Freight Agent.

CINCINNATI 2, OHIO—1431 Enquirer Bldg.—
617 Vine St.—Parkway 3212
E. A. DICK, General Agent.
E. H. NELSON, Traveling Freight & Passenger Agent.

CLEVELAND 13, OHIO—509 Terminal Tower Building—
50 Public Square—Cherry 1-7386
A. S. EATON, District Freight & Passenger Agent.

COLORADO SPRINGS, COLO.—
Suite 317 Exchange National Bank Bldg.—
6 South Tejon St.—Main 2884
E. D. MORRISON, General Agent.
H. L. JOHNSON, District Freight & Passenger Agent.

CRAIG, COLO.—Rio Grande Freight Depot—Phone 340
B. F. MOORE, District Freight & Passenger Agent.

DALLAS 1, TEXAS—607 Great National Life Building—
1604 Main St.—Phone Randolph 6322
J. B. LATIMER, General Agent.
T. J. BACON, District Freight & Passenger Agent.

DENVER 2, COLO.—
Rio Grande Bldg.—1531 Stout St.—Acoma 5533
City Ticket Office—Room 101—Main Floor
B. E. GREGORY, General Agent, Passenger Department.
D. G. FRAZIER, City Ticket Agent.
H. M. COX, City Passenger Agent.
C. L. RAHNE, City Passenger Agent.
T. D. JOHNSON, Depot Passenger Agent.
Freight Department—Room 100—Main Floor
E. K. WEST, General Agent, Freight Department.
C. M. WILDT, Commercial Agent.
A. L. BURSON, City Freight Agent.
A. D. COX, City Freight Agent.
H. C. McVEAN, Traffic Representative.
D. J. IZETT, Livestock Agent.

DETROIT 2, MICH.—5-157 General Motors Bldg.—
3044 West Grand Blvd.—Trinity 5-3025
P. O. SPURGEON, General Agent.
W. A. SIEBERT, Traveling Freight & Passenger Agent.
J. H. KRESS, Traveling Freight & Passenger Agent.

EUGENE, ORE.—203 Ardel Offices
33 10th Avenue East—Phone 5-7161
J. T. HULL, Commercial Agent.

FRESNO 21, CAL.—207 T. W. Patterson Bldg.—
2014 Tulare St.—Phone 4-3290
M. E. PYEATT, General Agent.

GRAND JUNCTION, COLO.—
Rio Grande Freight Depot—Phone 3021
W. J. MOORE, General Agent.

KANSAS CITY 6, MO.—524 Railway Exchange Bldg.
705 Walnut St.—Victor 5520
W. D. FERNALD, General Agent.
J. W. SAMPLE, Traveling Freight & Passenger Agent.
J. D. KEY, Traveling Freight & Passenger Agent.

LOS ANGELES 14, CAL.—724 Pacific Mutual Bldg.
523 West 6th St.—Madison 9-2156
A. R. ANDERSON, General Agent.
O. V. HOWARD, District Passenger Agent.
G. L. NICOLIN, Commercial Agent.
L. S. BRISTOL, City Freight Agent.
E. D. BURKE, City Freight Agent.
R. C. MILNES, City Freight Agent.

MINNEAPOLIS 2, MINN.—360 Rand Tower
527 Marquette Ave.—Atlantic 7888
C. W. CAMPBELL, General Agent.

NEW YORK 36, N. Y.—500 Fifth Ave., Room 220.
Chickering 4-7515

V. A. FARRELL, Assistant Traffic Manager.
W. C. RUBIEN, District Passenger Agent.
T. V. SIMMONS, City Passenger Agent.
G. L. KENNY, Commercial Agent.
C. J. DOBOL, Perishable Freight Agent.
J. W. WESTLAKE, Traveling Freight & Passenger Agent.
J. J. O'DONNELL, Traveling Freight & Passenger Agent.
E. K. YAEGER, City Freight Agent.
J. R. MELANSON, City Freight Agent.

OAKLAND 12, CAL.—514 Central Bank Bldg.—
14th & Broadway—Glencourt 1-4925
R. E. DAVIS, General Agent.
W. B. WAGNER, City Freight Agent.
T. M. SAFFOLD, City Freight Agent.

OGDEN, UTAH—Rio Grande Freight Depot
130 24th Street—Phone 3-3325
C. F. MOULTON, General Agent.

OMAHA 2, NEB.—
313 Grain Exch. Bldg., 19th & Harney—Jackson 5100
S. L. LOCKWOOD, General Agent.
R. G. SCHWARTZ, Traveling Freight & Passenger Agent.
O. F. WAGNER, Traveling Freight & Passenger Agent.
E. W. DeJONG, Traveling Freight & Passenger Agent.

PITTSBURGH 22, PA.—1410 Oliver Bldg.
535 Smithfield St.—Atlantic 1-2766
U. E. LLOYD, General Agent.
F. E. HILL, Traveling Freight & Passenger Agent.
T. J. NOLAN, Traveling Freight & Passenger Agent.

PORTLAND 4, ORE.—417 Pacific Bldg.
520 S. W. Yamhill St.—Beacon 6104
W. M. KIRKPATRICK, Assistant Traffic Manager.
N. W. VORPAHL, Traveling Freight & Passenger Agent.

PROVO, UTAH—Rio Grande Freight Depot
6th South and 3rd West—Phone 240
S. D. BURNSIDE, District Freight & Passenger Agent.
C. F. FISCHER, Traffic Representative.

PUEBLO, COLO.—Suite 227 Central Bldg.—
120 N. Main St.—Phones 5510, 6842
J. M. JENSEN, Assistant Traffic Manager.
E. W. SANFORD, District Freight & Passenger Agent.
W. M. LEWIS, Traveling Freight & Passenger Agent.

RENO, NEV.—98 Sunnyside Drive—
Phone 2-1373
J. B. HUNTER, General Agent.

SACRAMENTO 14, CAL.—926 Forum Bldg.
1107 Ninth Street—Phone Hudson 4-4432
H. I. SCOFIELD, General Agent.
H. H. HILL, Traveling Freight & Passenger Agent.

ST. LOUIS 3, MO.—
1218 Olive St., Suite 1210—Garfield 3670
H. A. ROBERTSON, Assistant Traffic Manager.
F. D. LUCAS, District Freight & Passenger Agent.
H. A. DEHNE, Commercial Agent.
J. M. SINCLAIR, Traveling Freight & Passenger Agent.

SALT LAKE CITY 1, UTAH—
24 South Main Street—Phone 4-6551
H. J. RIGGER, Assistant Traffic Manager.
D. P. HEINER, General Agent, Passenger Dept.
R. S. LAWRENCE, General Agent, Freight Dept.
J. M. ALDRICH, Commercial Agent.
G. W. BUNNER, City Passenger Agent.
F. J. MANGAN, City Ticket Agent.
J. C. WALDIE, Depot Passenger Agent.
J. L. HILL, Traveling Freight Agent.
CECIL PEARSON, City Freight Agent.
B. H. OCKEY, City Freight Agent.

SAN FRANCISCO 5, CAL.—291 Monadnock Bldg.—
681 Market St.—Garfield 1-2688
C. J. HARBEKE, Western Traffic Manager.
J. K. SPEIGHT, General Agent.
R. G. DE GUIRE, District Passenger Agent.
M. E. CHASE, Commercial Agent.
M. W. WELDON, Commercial Agent.
C. R. LENNIG, Traveling Freight & Passenger Agent.
C. E. MILLS, Traveling Freight & Passenger Agent.
G. A. CRONIN, City Freight Agent.
J. McMILLEN, City Freight Agent.
L. L. TAYLOR, City Freight Agent.
R. A. HANSEN, City Freight Agent.

SEATTLE 1, WASH.—503 White-Henry-Stuart Bldg.
4th & University—Elliot 8482
C. B. LOWRY, Commercial Agent.

WASHINGTON 5, D. C.—535 Shoreham Bldg.
15th & H Sts. N. W.—Executive 0373
J. L. HENNING, General Agent.
P. P. MAGUIRE, Traveling Freight & Passenger Agent.

F. C. HOGUE, Vice President—Traffic

O. J. GRIMES, General Traffic Manager

W. M. CAREY, General Freight Traffic Manager

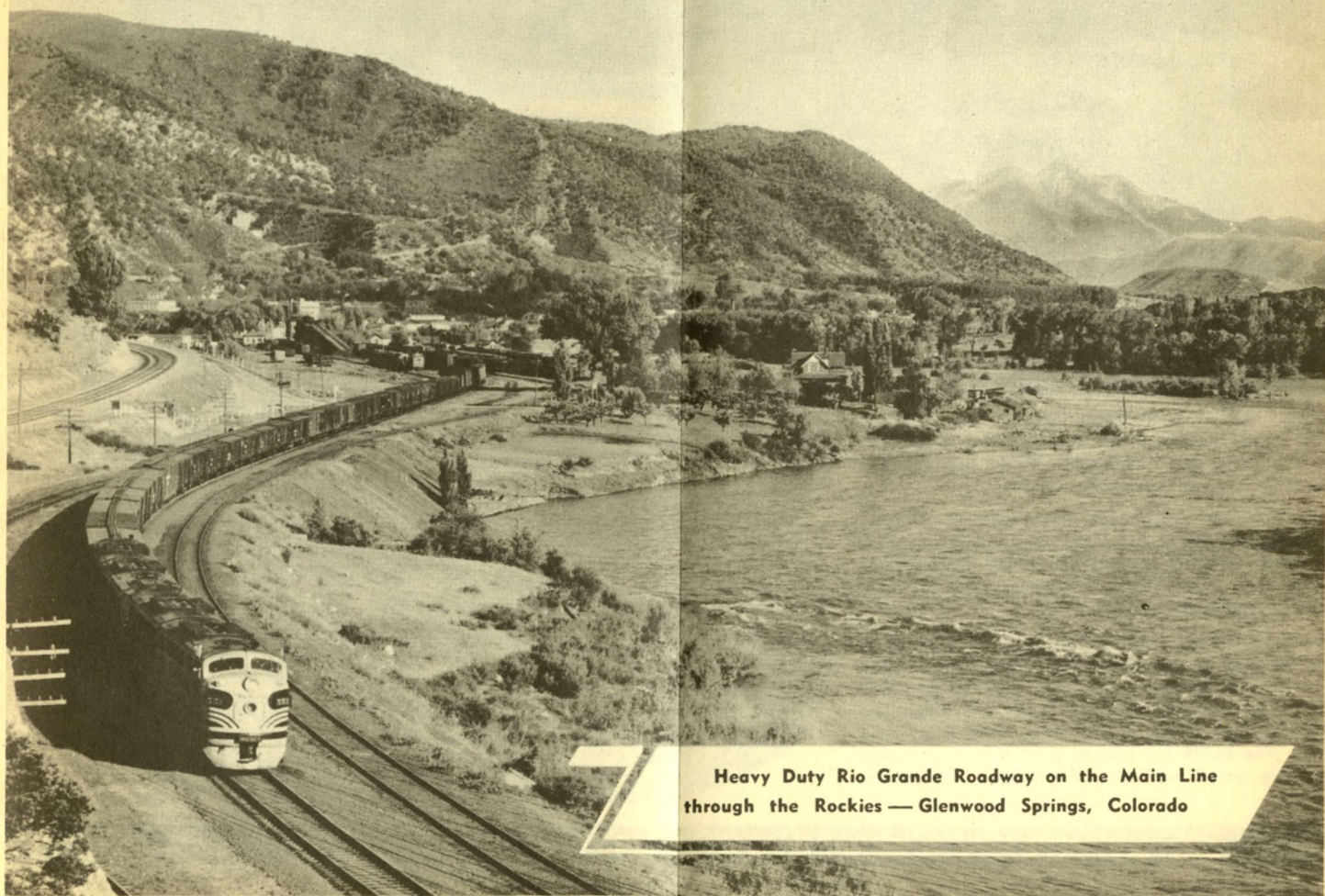
H. F. ENO, Passenger Traffic Manager

Rio Grande Building, 1531 Stout Street, Denver, Colorado

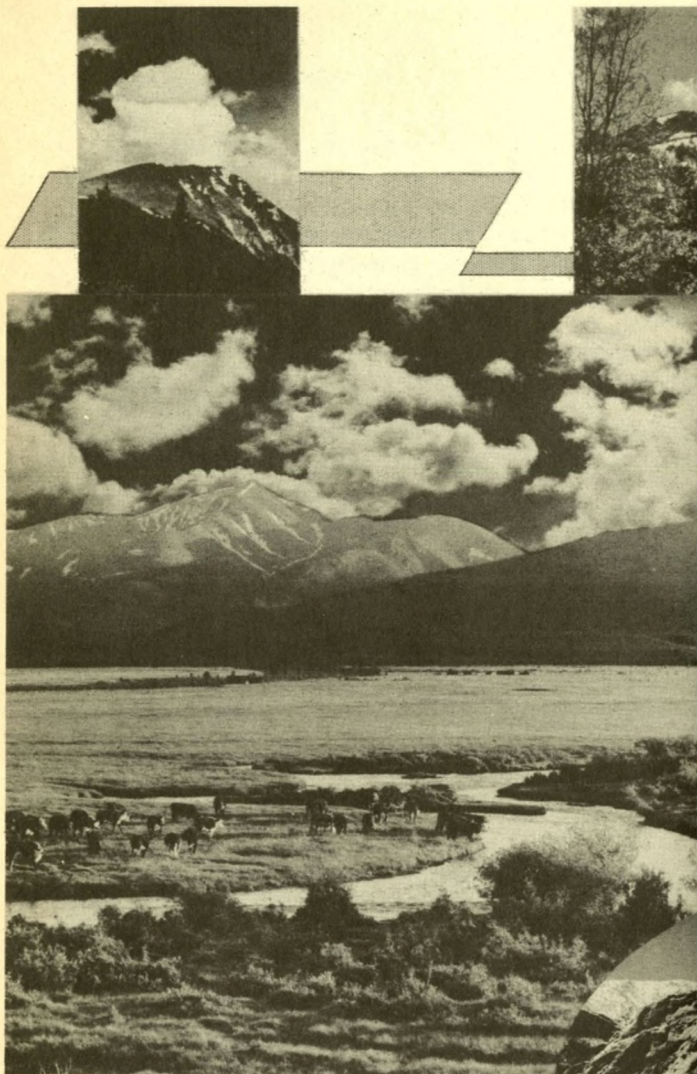


Ability and Desire to Serve . . .

The Direct Central Transcontinental Route to and from the Pacific Coast through Salt Lake City and Ogden; the Royal Gorge route via the Pueblo gateway; the Moffat Tunnel route via the Denver gateway. High speed roadway . . . Centralized Traffic Control and Automatic Electric Block Signals . . . Diesel-electric power . . . cab-to-caboose and train-to-station radio . . . new, modern rolling stock . . . a well-equipped, high-capacity railroad plant operated by skilled personnel.



**Heavy Duty Rio Grande Roadway on the Main Line
through the Rockies — Glenwood Springs, Colorado**



Above: 14,431 foot Mt. Elbert, highest peak in Colorado and second highest in the nation, reigns in majestic splendor over the Continental Divide and forms a beautiful sky line overlooking Leadville.

Top right: Mt. Timpanogos, named after the sleeping princess of Indian legend, is the glacier-crowned sentinel of Utah's Wasatch Range. The 12,008 foot monarch gives Provo a year-round recreational area which is truly a sportsman's paradise.

Right: Pikes Peak, America's most famous mountain, is the keystone of the nation's most popular resort area, the Colorado Springs region. The Garden of the Gods, Seven Falls, The Cave of the Winds and Bridal Veil Falls are but a few of the scenic attractions found here. The 14,110 foot summit of Pikes Peak is reached by wide paved highway and a unique cog railway.



DENVER AND RIO GRANDE WESTERN RAILROAD

Printed in U. S. A.

THE DIRECT CENTRAL TRANSCONTINENTAL ROUTE