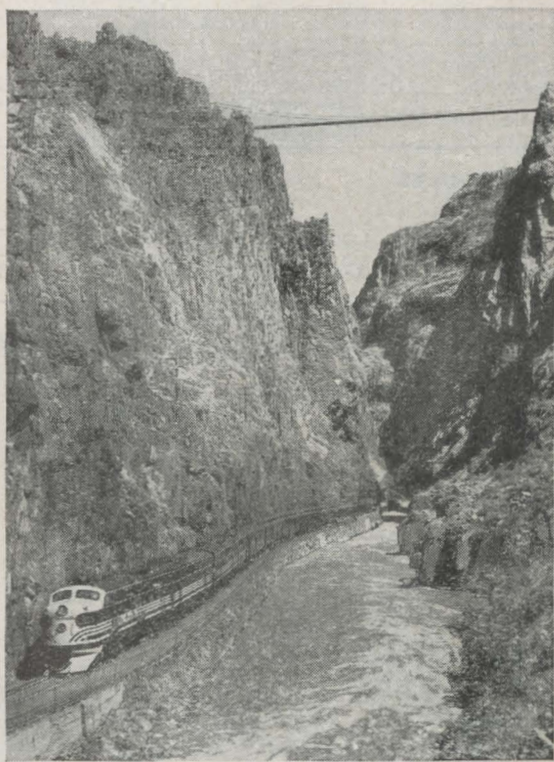


ISSUED JUNE 1, 1949

# Rio Grande

TIME TABLES

## ROYAL GORGE ROUTE



Royal Gorge of the Arkansas River

**DENVER & RIO GRANDE WESTERN  
RAILROAD**

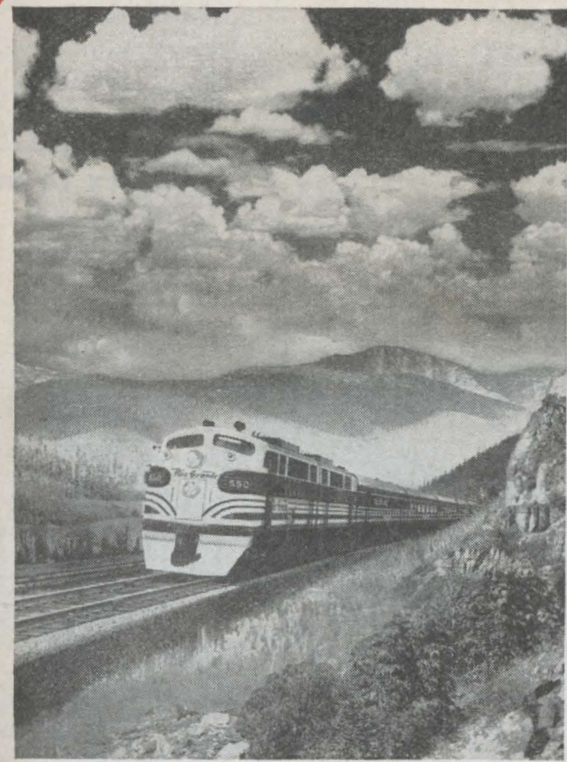
MAIN LINE THRU THE ROCKIES

ISSUED JUNE 1, 1949

# Rio Grande

TIME TABLES

## MOFFAT TUNNEL ROUTE



Continental Divide—Colorado River Scenic Shortcut

**DENVER & RIO GRANDE WESTERN  
RAILROAD**

MAIN LINE THRU THE ROCKIES





ROYAL GORGE ROUTE

Table 1 Denver, Colorado Springs, Pueblo, Canon City, Salida, Glenwood Springs, Grand Junction, Salt Lake City and Ogden Table 1

READ DOWN				Issued June 1, 1949				READ UP							
No. 15	No. 3 The Colorado Eagle	No. 1 The Royal Gorge	Miles	MOUNTAIN STANDARD TIME	Elevation	No. 2 The Royal Gorge	No. 4 The Colorado Eagle	No. 16	No. 11	No. 1 The Royal Gorge	Miles	MOUNTAIN STANDARD TIME	Elevation	No. 2 The Royal Gorge	No. 12
* 7 30 PM	* 4 10 PM	* 8 50 AM	0	Lv DENVER	Ar 5280	* 6 30 PM	* 9 25 AM	* 7 15 AM	* 10 50 PM	449.6	Lv GRAND JUNC.	Ar 4583	* 5 10 AM		
g	g	2.0	Ar Burnham	Ar 5227	st.	h	h	h	11 05	460.5	Ar Fruita	Ar 4510	4 43		
g	g	7.7	Ar Englewood	Ar	st.	h	h	h	f 11 11	465.6	Ar Loma	Ar 4525	f 4 34		
g	g	10.3	Ar Littleton	Ar 5372	st.	b	b	f 6 50 AM	f 11 15	468.9	Ar Mack	Ar 4540	f 4 28		
g	g	13.5	Ar Wolhurst	Ar 5419	st.	b	b	h	f 11 42	488.4	Ar Westwater, Utah	Ar 4340	4 02		
g	g	17.3	Ar Acequia	Ar 5533	st.	b	b	h	f 12 07 AM	504.4	Ar Cisco	Ar 4375	3 40		
g	g	20.7	Ar Louviers-Gann	Ar 5675	st.	b	b	h	12 48	528.1	Ar Thompson	Ar 5160	3 10		
g	g	24.5	Ar Sedalla	Ar 5835	st.	b	b	h	1 23	555.2	Ar Green River	Ar 4080	2 23		
g	g	32.5	Ar Castle Rock	Ar 6218	st.	b	b	h	f 2 04	581.4	Ar Woodside	Ar 4645	1 44		
g	g	42.9	Ar Larkspur	Ar 6668	st.	b	b	h	f 2 40	603.2	Ar Mounds	Ar 5442	f 1 16		
g	g	46.9	Ar Greenland	Ar 6919	st.	b	b	h	f 2 52	613.0	Ar Wellington	Ar 5415	f 1 04		
g	g	52.2	Ar Palmer Lake	Ar 7237	st.	b	b	h	f 3 10	619.1	Lv PRICE	Ar 5546	12 57		
g	g	55.9	Ar Monument	Ar 6972	st.	b	b	h	f 3 35	626.5	Ar Helper	Lv 5840	12 35		
g	g	61.9	Ar Husted	Ar 6596	st.	b	b	h	pv	628.8	Ar Utah Railway Jct.	Ar 5996			
g	g	70.3	Ar Pikeview	Ar 6199	st.	b	b	h	mpv	630.3	Ar Castle Gate	Ar 6120			
g	g	74.9	Ar Colorado Spgs.†	Lv 5989	st.	b	b	h	f 4 23 AM	639.3	Ar Kyune	Ar 7013	f 11 51 PM		
g	g	74.9	Lv Colorado Spgs.	Ar 5989	st.	b	b	h	f 4 33	644.5	Ar Colton	Ar 7170	f 11 41		
g	g	87.9	Ar Fountain	Ar 5577	st.	b	b	h	f 4 48	651.5	Ar Soldier Summit†	Ar 7470	f 11 30		
g	g	93.4	Ar Buttes	Ar 5386	st.	b	b	h	f 4 59	656.5	Ar Seene	Ar 6968	f 11 18		
g	g	99.0	Ar Henkel	Ar 5232	st.	b	b	h	f 5 09	661.0	Ar Gilluly	Ar 5529	f 11 08		
g	g	105.3	Ar Pinon	Ar 5038	st.	b	b	h	* 5 40 PM	680.9	Lv Thistle	Ar 5033	10 28	* 3 56 AM	
g	g	111.5	Ar Eden	Ar 4882	st.	b	b	h	f 5 45	684.6	Ar Castilla	Ar 4912	evz.	f 3 45	
g	g	119.4	Ar PUEBLO†	Lv 4668	su.	3 30 PM	6 55 AM	3 50 AM	f 6 01	695.8	Lv Springville	Ar 4555	f 9 58 PM	3 26	
g	g	119.4	Lv PUEBLO	Ar 4668	su.	3 10			f 6 12	701.2	Lv PROVO†	Lv 4512	9 57	3 10	
g	g	134.6	Ar Swallows	Ar 4887	su.				f 6 22	707.2	Lv Geneva	Ar	evz.	2 40	
g	g	139.6	Ar Hobson	Ar 4952	su.				f 6 32	713.7	Lv American Fork	Ar 4563	evz.	2 28	
g	g	144.4	Ar Concrete	Ar 5023	su.				f 6 37	717.0	Lv Lehl	Ar 4550	evz.	f 2 20	
g	g	145.8	Ar Portland	Ar 5051	su.	f 2 33 PM			f 6 42	720.2	Lv Mesa	Ar 4548	evz.	f 2 13	
g	g	151.9	Ar Florence	Ar 5199	su.	2 25			f 6 45	722.8	Lv Nash	Ar 4475	evz.	f 2 10	
g	g	160.0	Ar CANON CITY†	Ar 5344	su.	2 13			f 6 46	725.5	Lv Olivers	Ar 4453	evz.	f 2 07	
g	g	166.2	Ar Hanging Bridge	Lv 5494	su.	1 56			f 6 54	728.6	Lv Riverton	Ar 4408	evz.	f 2 03	
g	g	166.2	Lv Hanging Bridge	Ar 5494	su.	1 46 PM			f 7 02	734.5	Lv Mldvale	Ar 4365	evz.	1 54	
g	g	171.2	Ar Parkdale	Ar 5800	su.				f 7 08	738.4	Ar Murray	Ar 4310	evz.	f 1 44	
g	g	184.1	Ar Texas Creek	Ar 6210	su.	1 10 PM			f 7 14	742.5	Ar Roper	Ar 4320	evz.	f 1 37	
g	g	191.7	Ar Cotopaxi	Ar 6385	su.				7 25	745.1	Ar Salt Lake City†	Lv 4224	8 50 PM	1 30	
g	g	195.7	Ar Pleasanton	Ar 6481	su.				f 8 20	745.1	Lv Salt Lake City	Ar 4224	8 25		
g	g	198.1	Ar Valle	Ar 6534	su.				f 8 36	750.9	Ar North Salt Lake	Ar	f 8 07		
g	g	203.4	Ar Howard	Ar 6718	su.				f 8 41	753.6	Ar Woods Cross	Ar 4259	f 8 02		
g	g	215.1	Ar SALIDA†	Lv 7050	su.	12 20 PM			f 8 52	760.6	Ar Farmington	Ar 4231	f 7 51		
g	g	215.1	Lv SALIDA	Ar 7050	su.	12 05			f 8 58	764.4	Ar Kaysville	Ar 4262	f 7 45		
g	g	222.2	Ar Brown Canon	Ar 7324	uv.				f 9 03	767.2	Ar Layton	Ar 4329	f 7 40		
g	g	232.8	Ar Nathrop	Ar 7696	uv.				f 9 10	770.8	Ar Clearfield	Lv	f 7 33		
g	g	240.3	Ar Buena Vista	Ar 7968	uv.	11 25 AM			f 9 18	775.1	Ar Roy	Ar 4390	f 7 25		
g	g	248.0	Ar Riverside	Ar 8374	uv.				9 35	782.0	Ar OGDEN†	Lv 4293	7 10		
g	g	257.3	Ar Yale	Ar 8943	uv.										
g	g	271.0	Ar Malta	Lv 9580	uv.	10 45 AM									
g	g	271.0	Lv Malta	Ar 9580	uv.	10 35 AM									
g	g	275.8	Ar LEADVILLE	Lv 10200	uv.	10 05									
g	g	275.8	Lv LEADVILLE	Ar 10200	uv.	11 25 AM									
g	g	271.0	Ar Malta	Lv 9580	uv.	10 55									
g	g	271.0	Lv Malta	Ar 9580	uv.	10 45 AM									
g	g	281.0	Ar Tennessee Pass	Ar 10240	uv.	10 23									
g	g	288.7	Ar Pando	Ar 9209	uv.	f 9 56									
g	g	293.9	Ar Red Cliff	Ar 8608	uv.										
g	g	296.1	Ar Belden	Ar 8304	uv.										
g	g	302.0	Ar MInturn	Lv 7825	uv.	9 20 AM									
g	g	302.0	Lv MInturn	Ar 7825	uv.	9 15									
g	g	308.0	Ar Avon	Ar 7465	uv.										
g	g	319.1	Ar Wolcott	Ar 6975	uv.										
g	g	329.0	Ar Eagle	Ar 6598	uv.	f 8 22 AM									
g	g	335.8	Ar Gypsum	Ar 6325	uv.										
g	g	341.9	Ar DOTSERO	Ar 6155	uv.										
g	g	350.0	Ar Shoshone	Ar 6119	uv.										
g	g	360.1	Ar Glenwood Spgs.†	Lv 5758	uv.	7 30 AM									
g	g	360.1	Lv Glenwood Spgs.	Ar 5758	uv.	7 30									
g	g	372.7	Ar New Castle	Ar 5562	uv.										
g	g	379.5	Ar Silt	Ar 5441	uv.										
g	g	386.6	Ar Rifle	Ar 5310	uv.	6 45 AM									
g	g	391.4	Ar Lacy	Ar 5239	uv.										
g	g	404.0	Ar Grand Valley	Ar 5104	uv.										
g	g	408.8	Ar Una	Ar 5025	uv.										
g	g	416.6	Ar DeBeque	Ar 4945	uv.										
g	g	432.6	Ar Cameo	Ar 4774	uv.										
g	g	437.2	Ar Palsade	Ar 4739	uv.										
g	g	442.7	Ar Clifton	Ar 4713	uv.										
g	g	449.6	Ar GRAND JUNC.†	Lv 4583	uv.	5 25 AM									

READ DOWN				Issued June 1, 1949				READ UP			
No. 11	No. 1 The Royal Gorge	Miles	MOUNTAIN STANDARD TIME	Elevation	No. 2 The Royal Gorge	No. 12					
* 10 50 PM	449.6	Lv GRAND JUNC.	Ar 4583	* 5 10 AM							
11 05	460.5	Ar Fruita	Ar 4510	4 43							
f 11 11	465.6	Ar Loma	Ar 4525	f 4 34							
f 11 15	468.9	Ar Mack	Ar 4540	f 4 28							
f 11 42	488.4	Ar Westwater, Utah	Ar 4340	4 02							
f 12 07 AM	504.4	Ar Cisco	Ar 4375	3 40							
12 48	528.1	Ar Thompson	Ar 5160	3 10							
1 23	555.2	Ar Green River	Ar 4080	2 23							
f 2 04	581.4	Ar Woodside	Ar 4645	1 44							
f 2 40	603.2	Ar Mounds	Ar 5442	f 1 16							
f 2 52	613.0	Ar Wellington	Ar 5415	f 1 04							
f 3 10	619.1	Lv PRICE	Ar 5546	12 57							
f 3 35	626.5	Ar Helper	Lv 5840	12 35							
pv	628.8	Ar Utah Railway Jct.	Ar 5996								
mpv	630.3	Ar Castle Gate	Ar 6120								
f 4 23 AM	639.3	Ar Kyune	Ar 7013	f 11 51 PM							
f 4 33	644.5	Ar Colton	Ar 7170	f 11 41							
f 4 48	651.5	Ar Soldier Summit†	Ar 7470	f 11 30							
f 4 59	656.5	Ar Seene	Ar 6968	f 11 18							
f 5 09	661.0	Ar Gilluly	Ar 5529	f 11 08							
* 5 40 PM	680.9	Lv Thistle	Ar 5033	10 28	* 3 56 AM						
f 5 45	684.6	Ar Castilla	Ar 4912	evz.	f 3 45						
f 6 01	695.8	Lv Springville	Ar 4555	f 9 58 PM	3 26						
f 6 12	701.2	Lv PROVO†	Lv 4512	9 57	3 10						
f 6 22	707.2	Lv Geneva	Ar	evz.	2 40						
f 6 32	713.7	Lv American Fork	Ar 4563	evz.	2						

Table 2

MOFFAT TUNNEL ROUTE

Denver, Bond, Glenwood Springs, Grand Junction, and Salt Lake City

Table 2

READ DOWN			Issued June 1, 1949		READ UP			
No. 19 The Mountaineer	No. 7 The Prospecter	No. 17 California Zephyr	Miles from Denver	MOUNTAIN STANDARD TIME	Eleva- tion	No. 18 California Zephyr	No. 8 The Prospecter	No. 20 The Mountaineer
* 8 05 PM	* 5 30 PM	* 8 40 AM	0	Lv DENVER..... Ar	5280	* 7 00 PM	* 8 15 AM	* 7 20 AM
			49.6	Ar East Portal..... Lv	9197			
				MOFFAT TUNNEL				
			56.9	Lv Winter Park..... Ar	9076			
	8 10 PM		75.5	Ar Granby..... Lv	7937		5 27 AM	
12 57 AM	9 50 "	12 27 PM	129.3	Ar BOND..... Lv	6710	3 12 PM	3 50 "	2 33 AM
				(Orestod)				
			129.3	Lv BOND..... Ar	6710	3 09 PM	3 43 AM	f 2 23 AM
1 12 AM	9 57 PM	12 30 PM	134.9	Ar Glen..... Ar	6630			f 1 45 "
1 22 "			142.1	Ar Dell..... Ar	6523			f 1 36 "
1 45 "			144.6	Ar Burns..... Ar	6502			f 1 27 "
2 01 "			148.8	Ar Sylvan..... Ar	6451			f 1 17 "
2 10 "			155.3	Ar Range..... Ar	6350			f 1 13 "
2 14 "			157.7	Ar Sweetwater..... Ar	6317			f 1 03 "
2 21 "			163.2	Ar Niche..... Ar	6217			f 12 55 "
2 26 "			166.8	Ar DOTSERO..... Ar	6155			f 12 35 "
2 42 "			175.4	Ar Shoshone..... Ar	6119			
				Canon of Colo. River	5869			
3 10 AM	11 22 PM	1 53 PM	185.0	Lv Glenwood Springs† Lv	5758	1 35 PM	2 06 AM	12 10 AM
3 55 "			197.6	Ar New Castle..... Ar	5562			11 27 PM
4 10 "			204.4	Ar Silt..... Ar	5441			11 10 "
4 35 "			211.5	Ar Rifle..... Ar	5310			10 55 "
			216.3	Ar Lacy..... Ar	5239			
5 05 AM			228.9	Ar Grand Valley..... Ar	5104			10 16 PM
			233.7	Ar Una..... Ar	5025			
5 23 AM			241.5	Ar DeBeque..... Ar	4945			f 9 52 PM
f 5 53 "			257.5	Ar Cameo..... Ar	4774			f 9 23 "
6 10 "			261.9	Ar Palisade..... Ar	4739			f 9 17 "
6 25 "			267.4	Ar Clifton..... Ar	4713			9 02 "
6 40 "	1 10 AM	3 40 PM	274.5	Ar GRAND JUNC.† Lv	4583	11 53 AM	12 15 AM	8 50 "
				Lv Grand Junction..... Ar	4583			8 35 PM
7 10 AM			286.9	Ar Whitewater..... Lv	4665			f 7 58 "
7 40 "			301.0	Ar Bridgeport..... Lv				f 7 32 "
8 06 "			325.9	Ar Delta..... Lv	4980			f 6 45 "
9 03 "			336.5	Ar Olathe..... Lv	5365			f 6 20 "
9 27 "			347.2	Ar Montrose..... Lv	5811			f 6 00 "
9 50 "				Lv GRAND JUNC..... Ar	4583	*11 46 AM	*12 05 AM	
			285.4	Ar Fruita..... Ar	4510			
			290.5	Ar Loma..... Ar	4525			
			293.8	Ar Mack..... Ar	4540			
			313.3	Ar Westwater, Utah..... Ar	4340			
			329.3	Ar Cisco..... Ar	4375			
			353.0	Ar Thompson..... Ar	5160			
			380.1	Ar Green River..... Ar	4080			
			406.3	Ar Woodside..... Ar	4645			
			428.1	Ar Mounds..... Ar	5442			
			437.9	Ar Wellington..... Ar	5415			
			444.0	Lv PRICE†..... Lv	5546			
4 37 AM			451.4	Ar Helper..... Lv	5840	8 36 AM	8 49 PM	8 37 "
4 50 "			453.7	Ar Utah Railway Jet..... Ar	5906			
			455.2	Ar Castle Gate..... Ar	6120			
			464.2	Ar Kyune..... Ar	7013			
			469.4	Ar Colton..... Ar	7170			
			476.3	Ar Soldier Summit†..... Ar	7440			
			485.9	Ar Gilluly..... Ar	6529			
			505.8	Ar Thistle..... Ar	5033			
			509.5	Ar Castilla..... Ar	4912			
			520.7	Lv Springville..... Ar	4555			
			526.1	Lv PROVO†..... Ar	4512	w 6 32 AM	6 25 PM	
			532.1	Lv Geneva..... Ar				
			538.6	Lv American Fork..... Ar	4563			
			541.9	Lv Lehi..... Ar	4550			
			548.3	Lv Nash..... Ar	4475			
			551.0	Lv Olivers..... Ar	4453			
			554.1	Lv Riverton..... Ar	4408			
			559.4	Lv Midvale..... Ar	4365			
			563.3	Ar Murray..... Ar	4310			
			567.4	Ar Roper..... Ar	4320			
8 15 AM	10 05 PM	5 70.0	Ar Salt Lake City†..... Lv	4224		5 40 AM	5 30 PM	

SEE TABLE 1 FOR SALT LAKE CITY-OGDEN SERVICE

REFERENCE NOTES TABLES 1 AND 2

- a Daily.
- \* Stops on flag to receive pay passengers for points on Mo. Pac.
- b Stops to discharge pay passengers received from connections at Pueblo.
- d Stops on flag to receive pay passengers for points west of Grand Junction.
- e Stops to receive pay passengers for points east of Thistle.
- f Flag stop.
- g Stops on flag to receive pay passengers for points south or west of Pueblo.

COAST TO COAST SLEEPING CAR—SEE PAGE 6

EQUIPMENT

No. 7—The Prospector  
(Streamlined-Diesel Power)

+Diner-Lounge (Service a la carte and table d'hote).

+Standard Sleepers:

Denver to Salt Lake City—(D-5) 10 Sec. 1 DR. 2 Compt.

Denver to Salt Lake City—(D-7) 1 DR. 1 Dbl. Bedroom, 2 Single Bedrooms, 12 Roomettes.

+Chair Car—Denver to Salt Lake City.

No. 17—California Zephyr  
(Stainless Steel, Streamlined, Diesel Power)

+Vista Dome, Observation Lounge—Standard Sleeper-Chicago to San Francisco (CZ-10) 1 DR. 3 Dbl. BR. via CB&Q-D&RGW-WP.

+Standard Sleepers:

New York to San Francisco (CZ-11) 6 DBR. 10 Roomettes, via NYC 19 and PRR 23 alternate days to Chicago, thence CB&Q-D&R-GW-WP.

Chicago to San Francisco (CZ-12) 16 Sections, via CB&Q-D&RGW-WP. Chicago to San Francisco (CZ-14 and CZ-15) (2 cars) 6 DBR. 10 Roomettes, via CB&Q-D&RGW-WP.

+Vista Dome Chair Cars—Chicago to San Francisco (CZ-20, CZ-21 and CZ-22) (3 cars), CB&Q-D&RGW-WP.

+Vista Dome Buffet-Lounge—(Lounge for all passengers: Vista Dome for sleeping car passenger;) (Buffet and sandwich service 6:00 AM to midnight) Chicago to San Francisco via CB&Q-D&RGW-WP.

+Diner—(Service a la carte and table d'hote) Chicago to San Francisco via CB&Q-D&RGW-WP.

All space on the California Zephyr—both coach and Pullman—is reserved and specifically assigned in advance. Dome seats are not reserved. Checked baggage will be handled on the California Zephyr to or from Glenwood Springs and Grand Junction, Colorado, but not to or from other intermediate points between Denver and Salt Lake City. No extra fare.

No. 19—The Mountaineer

+Standard Sleeper—Denver to Montrose (D-1) 14 Sec.

+Chair Car—Denver to Montrose.

+ Air Conditioned.

No. 20—The Mountaineer

+Standard Sleeper—Montrose to Denver (D-2) 14 Sec.

+Chair Car—Montrose to Denver.

+ Air Conditioned.

REFERENCE NOTES TABLES 1 AND 2 (Continued)

- h Stops to discharge pay passengers from points south and west of Pueblo.
- j Stops on flag to receive pay passengers for Denver or beyond.
- m Stops on flag to receive or discharge pay passengers from or to points where train is scheduled to stop.
- p Stops to discharge pay passengers.
- r Stops to discharge revenue passengers from Denver and beyond, and receive revenue passengers for Oakland-San Francisco.
- s Stops to discharge pay passengers received from Western Connections.
- t Stops to discharge pay passengers from Grand Junction and points west.
- u Stops to discharge pay passengers from points west of Grand Junction.
- v Stops to discharge or receive pay passengers ticketed through from or to connections.
- w Stops to discharge revenue passengers from San Francisco-Oakland, and receive revenue passengers for Denver and beyond.
- x Stops to discharge pay passengers from Denver, Colorado Springs and Pueblo.
- y Stops on flag to receive pay passengers for Salida and points east where scheduled to stop.
- z Stops on flag to receive pay passengers for points east of Grand Junction.
- ♦ Stops to discharge through pay passengers received from connections at Denver, Colorado Springs or Pueblo.
- ▲ Daily bus service via Continental Trailways.
- † U. S. Mail Box located on station platform.
- AT COLORADO SPRINGS, SOUTHBOUND TRAINS USE D.&R.G.W. STATION; NORTHBOUND TRAINS USE A. T. & S. F. STATION.

TRAVEL ON CREDIT—CONSULT AGENT

LOCAL SERVICE

Table 3

DENVER, COLORADO SPRINGS, PUEBLO, GUNNISON, MONTROSE AND GRAND JUNCTION

READ DOWN				READ UP			
No. 1	No. 15	Miles	STATIONS	Elevation	No. 16	Bus	
* 8 50 AM	* 7 30 PM	0.0	Lv DENVER..... Ar	5280	* 7 15 AM		
10 47 "	9 45 "	74.9	Lv COLORADO SPRINGS Ar	5989	5 00 "		
11 45 "	10 50 "	119.4	Ar PUEBLO..... Lv	4668	3 50 "		
Bus				Bus			
12 05 PM	▲ 1 30 AM	119.4	Lv PUEBLO..... Ar	4668	▲ 11 35 PM		
12 52 "	▲ 2 12 "	151.9	Lv FLORENCE..... Lv	5199	▲ 10 53 "		
1 14 "	▲ 2 32 "	160.0	Lv Canon City..... Ar	5344	▲ 10 33 "		
3 00 "	▲ 3 45 "	215.1	Ar Salida..... Lv	7050	▲ 9 20 "		
Bus				Bus			
▲ 6 35 PM	▲ 3 55 AM	215.1	Lv SALIDA..... Ar	7050	▲ 9 10 PM	▲ 12 50 PM	
f	f	257.2	Lv Sargent..... Ar	8477	f	f	
f	f	276.8	Ar Parlin..... Lv	7952	f	f	
▲ 8 20 PM	▲ 5 40 AM	288.6	Ar Gunnison..... Lv	7683	▲ 7 30 PM	▲ 11 05 AM	
▲ 8 30 "	▲ 6 15 "	288.6	Lv Gunnison..... Ar	7683	▲ 7 00 "	▲ 10 55 "	
f	f	314.0	Ar Sapinero..... Lv	7255	f	f	
f	f	329.0	Ar Cimarron..... Ar	6905	f	f	
▲ 10 15 PM	▲ 8 00 AM	351.5	Ar MONTROSE..... Lv	5811	▲ 5 20 PM	▲ 9 10 AM	
▲ 10 25 "	▲ 8 10 "	351.5	Lv MONTROSE..... Ar	5811	▲ 5 10 "	▲ 9 00 "	
▲ 10 42 "	▲ 8 27 "	362.2	Ar Olathe..... Lv	5365	▲ 4 52 "	▲ 8 42 "	
▲ 11 00 "	▲ 8 45 "	372.8	Ar Delta..... Ar	4980	▲ 4 35 "	▲ 8 25 "	
▲ 12 05 AM	▲ 9 50 "	424.2	Ar GRAND JUNCTION. Lv	4583	▲ 3 30 "	▲ 7 20 "	
# 7 15 AM	▲ 10 30 AM	288.6	Lv GUNNISON..... Ar	7683	▲ 5 05 PM	# 9 50 AM	
# 7 45 "	▲ 11 05 "	299.4	Lv Almont..... Lv	8042	▲ 4 35 "	# 9 20 "	
# 8 00 "	▲ 11 25 "	304.7	Lv Jacks Cabln..... Lv	8309	▲ 4 15 "	# 9 05 "	
# 8 30 "	▲ 11 55 "	316.3	Ar Crested Butte..... Lv	8878	▲ 3 45 "	# 8 35 "	
▲ 10 10 AM				351.5	Lv MONTROSE..... Ar	5811	▲ 7 55 PM
▲ 11 00 "				377.1	Lv Ridgway..... Lv	7003	▲ 7 05 "
▲ 11 20 "				387.4	Ar OURAY..... Lv	7721	▲ 6 45 "
▲ 5 35 PM	▲ 9 30 AM	372.8	Lv DELTA..... Ar	4980	▲ 3 15 PM	▲ 7 30 AM	
▲ 5 51 "	▲ 9 48 "	380.8	Lv Austln..... Lv	5070	▲ 2 59 "	▲ 7 14 "	
▲ 6 25 "	▲ 10 33 "	397.8	Ar HOTCHKISS..... Lv	5369	▲ 2 29 "	▲ 6 44 "	
▲ 6 50 "	▲ 11 05 "	405.9	Ar PAONIA..... Lv	5694	▲ 2 05 "	▲ 6 20 "	
	▲ 11 55 "	415.3	Ar SOMERSET..... Lv	6065	▲ 1 15 "		

REFERENCE NOTES TABLES 3 AND 4

- \* Daily. f Stops on flag. ▲ Daily bus service via Continental Trailways.
- † Daily except Sunday bus service via Continental Trailways. || Meal Station.
- Heavy figures P. M. Light figures A. M.
- # Sunday only bus service via Continental Trailways.
- † Tuesday and Saturday, effective June 21, 1949, for Summer Season.

EQUIPMENT—TABLES 3 AND 4

Train No. 1—The Royal Gorge

- + Observation-Lounge Car:
- + Standard Sleeper:
- + Chair Car:
- + Diner:
- Denver to Salida.

Train 15-115-215

- + Standard Sleeper—Denver to Alamosa (14), 12 Sec. 1 DR.
- + Chair Car—Denver to Alamosa.
- Coach—Alamosa-Durango.
- Parlor Car (Dinette Service) Alamosa to Durango (Railroad-owned).

Train 216-116-16

- + Standard Sleeper—Alamosa to Denver (14), 12 Sec. 1 DR.
- + Chair Car—Alamosa to Denver.
- Coach—Durango-Alamosa.
- Parlor Car (Dinette Service) Durango to Alamosa (Railroad-owned).

Trains 461 and 462  
The Silverton

(Tuesday and Saturday during Summer Season)

Silver Vista Observation Car:

Coach:  
Between Durango and Silverton.

+ Air Conditioned.

Table 4

DENVER, COLORADO SPRINGS, PUEBLO, WALSENBURG, ALAMOSA, DURANGO, CREEDE AND SILVERTON VIA LA VETA PASS

READ DOWN				READ UP			
Bus	No. 15-115-215	Miles	STATIONS	Elevation	No. 216-116-16	Bus	
	* 7 30 PM	0.0	Lv DENVER..... Ar	5280	* 7 15 AM		
	9 45 "	74.9	Lv COLORADO SPRINGS Ar	5989	5 00 "		
	10 50 "	119.4	Ar PUEBLO..... Lv	4668	3 50 "		
▲ 11 25 PM				119.4	Lv PUEBLO..... Ar	4668	* 2 45 AM
f 11 37 "				121.4	Ar MINNEQUA..... Lv	4822	f 2 15 "
f				134.0	Ar Marnel..... Lv	5130	f
f				142.7	Ar Cedarwood..... Lv	5606	f
f				153.8	Ar Lascar..... Lv	5698	f
f				164.5	Ar Sandy..... Lv	6007	f
f 1 00 AM				175.0	Ar WALSENBURG..... Lv	6187	f 12 45 AM
1 00 AM				175.0	Lv WALSENBURG..... Ar	6187	12 45 AM
1 40 "				190.3	Ar LA VETA..... Lv	7024	12 15 "
1 45 "				190.3	Lv LA VETA..... Ar	7024	12 10 "
3 40 "				227.7	Ar Fort Garland..... Lv	7936	10 23 PM
3 55 "				231.7	Ar Blanca..... Lv	7751	10 13 "
4 45 "				251.7	Ar ALAMOSA..... Lv	7546	9 40 "
▲ 6 05 AM				7 00 "	Lv ALAMOSA..... Ar	7546	8 30 PM
f				7 30 "	Lv La Jara..... Lv	7609	f 7 59 "
f				7 45 "	Ar Romeo..... Lv	7736	f 7 42 "
f				8 05 "	Ar ANTONITO..... Lv	7888	f 7 25 "
f				8 05 "	Ar ANTONITO..... Lv	7888	f 7 25 "
f				9 09 "	Ar Sublette..... Lv	9276	f 6 15 "
f				9 22 "	Ar Toltec..... Lv	9465	f 6 01 "
f				9 45 "	Ar Oster..... Lv	9637	f 5 35 "
f				10 20 "	Ar Cumbres..... Lv	10015	f 5 02 "
f				11 10 "	Ar CHAMA..... Lv	7863	4 05 "
f				11 15 "	Ar CHAMA..... Lv	7863	4 00 "
f 11 59 PM				363.5	Ar Monero..... Lv	7252	f 3 04 "
f 12 18 PM				369.6	Ar Lumberton..... Lv	6856	f 2 47 "
f 12 27 "				373.3	Ar Dulce..... Lv	6779	f 2 36 "
f				1 21 "	Ar Gato..... Lv	6271	f 1 49 "
f				1 58 "	Ar Arboles..... Lv	6013	f 1 13 "
f 2 15 "				410.8	Ar Allison..... Lv	6222	f 12 56 "
f 2 53 "				425.7	Ar Ignacio..... Lv	6437	f 12 22 "
▲ 10 10 AM				4 05 "	Ar DURANGO..... Lv	6520	11 15 AM
(Continental Trailways)							
▲ 8 05 PM	▲ 6 05 AM	▲ 8 00 AM	251.7	Lv ALAMOSA..... Ar	7546	▲ 7 10 PM	▲ 7 30 PM
▲ 8 40 "	▲ 6 40 "	▲ 8 40 "	269.0	Lv Monte Vista..... Lv	7665	▲ 6 40 "	▲ 7 05 "
▲ 9 00 "	▲ 7 00 "	▲ 9 25 "	282.8	Lv Del Norte..... Lv	7880	▲ 6 10 "	▲ 10 25 "
	▲ 7 25 "	▲ 10 25 "	298.2	Lv South Fork..... Lv	8188	▲ 5 15 "	
		▲ 10 50 "	312.1	Lv Wagon Wheel Gap. Lv	8439	▲ 4 45 "	
		▲ 11 30 "	320.7	Ar CREEDE..... Lv	8844	▲ 4 25 "	
Bus	No. 461 Mixed Tuesday and Saturday for Summer Season			D. & R. G. W. R. R.  The Silverton  (See Note)	No. 462 Mixed Tuesday and Saturday for Summer Season	Bus	
▲ 3 00 PM	▲ 9 15 AM	451.5	Lv DURANGO..... Ar	6520	▲ 5 00 PM	▲ 3 05 PM	
f	10 26 "	469.1	Ar Rockwood..... Lv	7367	3 53 "	f	
▲ 5 10 PM	12 40 PM	496.3	Ar SILVERTON..... Lv	9300	1 40 PM	▲ 12 55 PM	

NOTE: The Silverton will commence operation on this schedule effective June 21, 1949, for summer season.

DURANGO—MESA VERDE NATIONAL PARK  
VIA CONTINENTAL TRAILWAYS  
(June 1 to September 15 1949)

▲ 10 20 AM	▲ 4 15 PM	Lv Durango..... Ar	▲ 2 50 PM	▲ 8 30 PM
▲ 12 00 N	▲ 6 00 "	Ar Mesa Verde Ntl. Pk. Lv	▲ 1 10 "	▲ 6 45 "
(Spruce Tree Lodge)				

DON'T TAKE A CHANCE!

If your train should be running late, do not walk too far away at intermediate stations, as every effort consistent with safety is made to regain lost time, and in such cases station stops are frequently shorter than shown in the time table folder.

LOCAL SERVICE—(Cont'd)

Table 5

DENVER, WINTER PARK, GRANBY, STEAMBOAT SPRINGS AND CRAIG

READ DOWN		Miles	STATIONS	Eleva-tion	READ UP	
No. 23	No. 9				No. 10	No. 24
8 20 PM	* 9 25 AM	0	Lv Denver..... Ar	5280	* 3 15 PM	6 20 AM
f 8 38 "	f 9 38 "	4	Lv Zuni..... Lv	5211	f 3 02 "	
	f 9 43 "	7	Lv Ralston..... Lv	5358	f 2 57 "	
	f 9 53 "	12	Lv Leyden Junction..... Lv	5617	f 2 47 "	
f 9 35 PM	f 10 23 "	24	Lv Plainview..... Lv	6782	f 2 15 "	4 55 AM
	f 10 45 "	31	Lv Crescent..... Lv	7441	f 1 53 "	
	f 11 05 "	37	Lv Pine Cliff..... Lv	7966	f 1 33 "	4 12 AM
10 13 PM	f 11 18 "	42	Lv Rollinsville..... Lv	8367	f 1 18 "	3 57 "
f 10 43 "	f 11 30 "	47	Lv Tolland..... Lv	8886	f 1 06 "	f 3 45 "
10 56 "	f 11 37 "	50	Lv East Portal..... Lv	9197	f 1 00 "	3 35 "
			(Moffat Tunnel)			
11 16 PM	f 11 52 AM	57	Lv Winter Park..... Lv	9076	12 42 PM	3 15 AM
11 32 "	f 12 04 PM	62	Lv Fraser..... Lv	8561	12 24 "	2 50 "
11 40 "	f 12 12 "	66	Lv Tabernash..... Lv	8318	12 12 "	2 40 "
	f 12 17 "	70	Lv Elkdale..... Lv	8156	f 11 55 AM	
12 06 AM	12 35 "	76	Lv Granby..... Lv	7790	f 11 37 "	2 10 AM
	f 12 40 "	80	Lv Drowsy Water..... Lv	7937	f 11 30 "	
12 30 AM	12 50 "	86	Lv HotSulphurSpgs..... Lv	7662	f 11 20 "	1 35 AM
f 12 51 "	f 12 55 "	91	Lv Marshall..... Lv	7589	f 1 15 "	
1 21 "	f 1 19 "	103	Lv Kremmling..... Lv	7322	11 03 "	12 55 "
	f 1 23 "	106	Lv Gore..... Lv	7322		
f 2 00 AM	f 1 48 "	117	Lv Radium..... Lv	6858	10 31 "	f 12 20 AM
f 2 18 "	f 2 03 "	126	Lv State Bridge..... Lv	6728	f 10 13 "	f 11 57 PM
f 2 35 "	f 2 13 "	129	Lv Orestod..... Lv	6710	10 10 "	11 50 "
f 2 53 "	f 2 30 "	134	Lv McCoy..... Lv	7228	f 9 52 "	f 11 20 "
	f 2 53 "	143	Lv Volcano..... Lv	7807	f 9 30 "	
	f 3 13 "	150	Lv Egeria..... Lv	8123	f 9 11 "	
f 3 51 AM	f 3 18 "	153	Lv Toponas..... Lv	8264	9 06 "	f 10 23 PM
f 4 13 "	f 3 35 "	162	Lv Yampa..... Lv	7882	8 52 "	10 06 "
4 45 "	f 4 00 "	168	Lv Phippsburg..... Lv	7413	8 40 "	9 35 "
5 05 "	f 4 10 "	171	Lv Oak Creek..... Lv	7397	f 8 15 "	9 18 "
f 5 07 "	f 4 12 "	172	Lv Oak Hills..... Lv	7372	f 8 13 "	f 9 17 "
5 16 "	f 4 19 "	175	Lv Haybro..... Lv	7169	f 8 06 "	f 9 10 "
f 5 30 AM	f 4 36 "	184	Lv Sidney..... Lv	6823	f 7 53 "	f 8 53 "
f 6 01 "	f 4 57 "	191	Lv Steamboat Spgs..... Lv	6682	f 7 42 "	8 40 "
f 6 19 "	f 5 08 "	198	Lv Brookston..... Lv	6529	f 7 26 "	f 8 12 "
f 6 29 "	f 5 14 "	201	Lv Milner..... Lv	6480	f 7 13 "	f 8 02 "
f 6 29 "	f 5 22 "	206	Lv Bear River..... Lv	6425	f 7 10 "	f 7 58 "
6 38 "	f 5 29 "	208	Lv Mt. Harris..... Lv	6413	f 7 08 "	f 7 43 "
6 58 "	f 5 45 "	215	Lv Hayden..... Lv	6328	f 6 58 "	f 7 34 "
f 7 10 AM	f 5 51 "	219	Lv Cary Ranch..... Lv	6278	f 6 49 "	k 7 15 "
7 45 "	f 6 35 "	231	Ar Craig..... Lv	6174	* 6 30 "	

# TRANSCONTINENTAL PULLMAN SERVICE

## Between NEW YORK and SAN FRANCISCO

Car CZ-11, 6 Double Bedroom—10 Roomette Standard Sleeper on the "California Zephyr" operates westbound from New York to Chicago via Pennsylvania Railroad "Manhattan Limited" one day and New York Central "Lake Shore Limited" the next; eastbound from Chicago to New York via Pennsylvania Railroad "The Rainbow" one day, and New York Central "Lake Shore Limited" the next. Schedule and dates of operation shown below.

SCHEDULE

Westbound		(Subject to Change)		Eastbound	
N. Y. C. Lake Shore Ltd.	P. R. R. Manhattan Ltd.	N. Y. C. Lake Shore Ltd.	P. R. R. The Rainbow	N. Y. C. Lake Shore Ltd.	P. R. R. The Rainbow
6:15PM (EST)	7:00PM (CST)	Lv New York..... Ar	12:15PM (EST)	11:05AM (CST)	
11:59AM (CST)	12:20PM (MST)	Ar Chicago..... Lv	6:15PM (CST)	4:30PM (MST)	
	3:30PM (CST)	Lv Chicago (Burlington)..... Ar		1:30PM (CST)	
	8:20AM (MST)	Ar Denver..... Lv		7:15PM (MST)	
	8:40AM (MST)	Lv Denver (Rio Grande)..... Ar		7:00PM (MST)	
	10:05PM (MST)	Ar Salt Lake City..... Lv		5:40AM (MST)	
	10:25PM (MST)	Lv Salt Lake City..... Ar		5:20AM (MST)	
		(Western Pacific)			
	4:50PM (PST)	Ar San Francisco..... Lv		9:00AM (PST)	

DATES OF OPERATION

Westbound Car Passes Denver as follows		Eastbound Car Passes Salt Lake City as follows	
Odd Dates	Even Dates	Odd Dates	Even Dates
N. Y. C.	P. R. R.	N. Y. C.	P. R. R.
N. Y. C.	P. R. R.	N. Y. C.	P. R. R.
P. R. R.	N. Y. C.	P. R. R.	N. Y. C.
N. Y. C.	P. R. R.	N. Y. C.	P. R. R.
N. Y. C.	P. R. R.	N. Y. C.	P. R. R.
P. R. R.	N. Y. C.	P. R. R.	N. Y. C.
P. R. R.	N. Y. C.	P. R. R.	N. Y. C.
N. Y. C.	P. R. R.	P. R. R.	N. Y. C.
P. R. R.	N. Y. C.	N. Y. C.	P. R. R.
N. Y. C.	P. R. R.	N. Y. C.	P. R. R.
N. Y. C.	P. R. R.	N. Y. C.	P. R. R.
		JUNE 1949	
		JULY 1949	
		AUGUST 1949	
		SEPTEMBER 1949	
		OCTOBER 1949	
		NOVEMBER 1949	
		DECEMBER 1949	
		JANUARY 1950	
		FEBRUARY 1950	
		MARCH 1950	
		APRIL 1950	
		MAY 1950	

MARYSVALE BRANCH

Table 6

READ DOWN		Miles	STATIONS	Eleva-tion	READ UP	
Bus Service	No. 12				No. 11	Bus Service
* 3 45 PM	* 1 30 AM	0.0	Lv SALT LAKE CITY..... Ar	4224	* 7 25 PM	* 2 05 PM
	f 1 54 "	10.6	Lv MIDVALE..... Lv	4365	f 7 02 "	
	f 2 20 "	28.2	Lv Lehi..... Lv	4550	f 6 37 "	
	f 2 28 "	31.5	Lv American Fork..... Lv	4563	f 6 32 "	
	f 3 10 "	44.1	Lv Provo..... Lv	4512	f 6 12 "	
	f 3 26 "	49.4	Lv Springville..... Lv	4555	f 6 01 "	
	f 3 56 "	65.5	Ar THISTLE..... Lv	5033	f 5 40 "	
	* 4 01 AM	65.5	Lv THISTLE..... Ar	5033	* 5 35 PM	
* 6 35 PM	f 5 12 "	97.5	Lv Fairview..... Ar	6033	f 4 26 "	* 11 15 AM
* 6 49 "	f 5 29 "	104.1	Lv Mount Pleasant..... Lv	5857	f 4 13 "	* 11 06 "
	f 5 42 "	109.5	Lv Spring City..... Lv	5696	f 4 01 "	* 11 01 "
* 7 17 PM	f 6 00 "	118.9	Lv Ephraim..... Lv	5543	* 10 33 AM	
* 7 29 "	f 6 18 "	126.3	Ar MANTI..... Ar	5530	f 3 30 "	* 10 21 "
* 7 29 "	f 6 18 "	126.3	Ar MANTI..... Ar	5530	f 3 30 "	* 10 21 "
* 7 39 "	f 6 29 "	131.8	Lv Sterling..... Lv	5414	f 3 16 "	* 10 11 "
* 7 52 "	f 6 44 "	138.4	Lv Gunnison..... Lv	5215	f 3 00 "	* 9 58 "
* 8 17 "	f 7 15 "	151.9	Lv Sallina..... Lv	5160	f 2 34 "	* 9 33 "
* 8 25 "	f 7 23 "	157.1	Lv Aurora..... Lv	5190	f 2 21 "	* 9 25 "
* 8 34 "	f 7 38 AM	161.8	Lv Sigurd..... Lv	5270	f 2 11 "	* 9 15 "
* 8 56 "	f 8 05 "	169.2	Lv Richfield..... Lv	5308	f 1 55 "	* 9 04 "
* 9 25 "	f 8 26 "	177.2	Lv Elsinore..... Lv	5335	f 1 35 "	* 8 25 "
	f 8 37 "	182.0	Lv Joseph..... Lv	5435	f 1 22 "	* 8 15 "
* 9 40 PM	f 8 46 "	186.0	Lv Sevier..... Lv	5542	f 1 13 "	* 8 10 AM
* 10 00 "	f 9 25 "	197.7	Ar MARYSVALE..... Lv	5839	f 12 45 "	* 7 50 "

REFERENCE NOTES TABLES 5 AND 6

\* Daily. f Flag stop.  
 c Leaves Denver Monday, Wednesday and Friday.  
 k Leaves Craig Tuesday, Thursday and Saturday.  
 ^ Daily Bus Service via Continental Trailways.  
 † Stops daily except Sunday. Heavy figures P. M. Light figures A. M.

VISIT THE RIO GRANDE RAILROAD FAIR JUNE 25 TO OCTOBER 2 1949

JUNE—1949							JULY—1949							AUGUST—1949									
S	M	T	W	T	F	S	S	M	T	W	T	F	S	S	M	T	W	T	F	S			
				1	2	3	4					1	2	3	4			1	2	3	4	5	6
5	6	7	8	9	10	11	12	3	4	5	6	7	8	9	10	7	8	9	10	11	12	13	
12	13	14	15	16	17	18	19	10	11	12	13	14	15	16	14	15	16	17	18	19	20		
19	20	21	22	23	24	25	26	17	18	19	20	21	22	23	21	22	23	24	25	26	27		
26	27	28	29	30				24	25	26	27	28	29	30	28	29	30	31					

SEPTEMBER—1949							OCTOBER—1949							NOVEMBER—1949									
S	M	T	W	T	F	S	S	M	T	W	T	F	S	S	M	T	W	T	F	S			
				1	2	3	4					1	2	3	4			1	2	3	4	5	6
4	5	6	7	8	9	10	11	2	3	4	5	6	7	8	6	7	8	9	10	11	12		
11	12	13	14	15	16	17	18	9	10	11	12	13	14	15	13	14	15	16	17	18	19		
18	19	20	21	22	23	24	25	16	17	18	19	20	21	22	20	21	22	23	24	25	26		
25	26	27	28	29	30			23	24	25	26	27	28	29	27	28	29	30					

DECEMBER—1949							JANUARY—1950							FEBRUARY—1950									
S	M	T	W	T	F	S	S	M	T	W	T	F	S	S	M	T	W	T	F	S			
				1	2	3	4					1	2	3	4			1	2	3	4	5	6
4	5	6	7	8	9	10	11	1	2	3	4	5	6	7	5	6	7	8	9	10	11		
11	12	13	14	15	16	17	18	8	9	10	11	12	13	14	12	13	14	15	16	17	18		
18	19	20	21	22	23	24	25	15	16	17	18	19	20	21	19	20	21	22	23	24	25		
25	26	27	28	29	30	31		22	23	24	25	26	27	28	26	27	28						

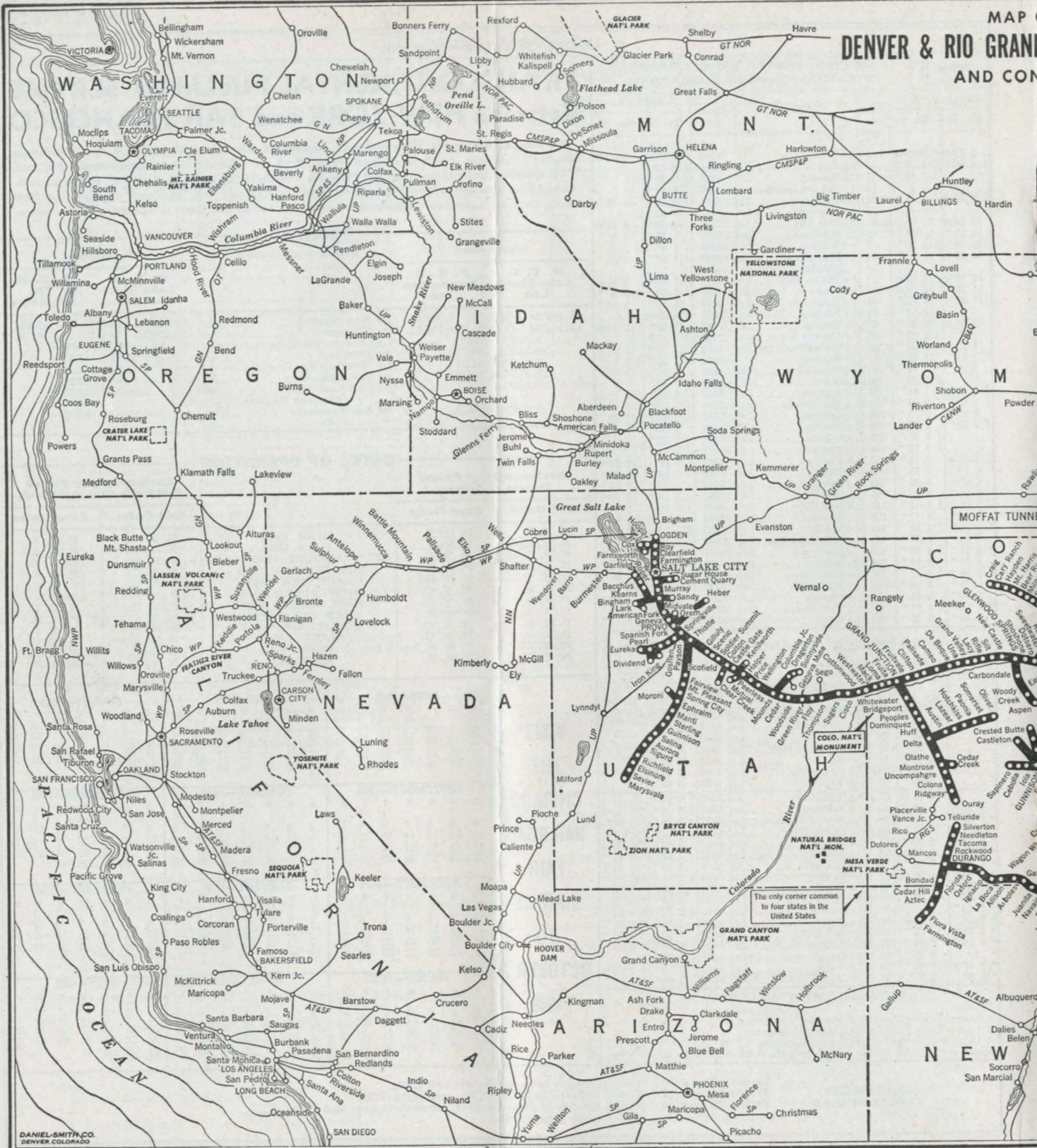
MARCH—1950							APRIL—1950							MAY—1950									
S	M	T	W	T	F	S	S	M	T	W	T	F	S	S	M	T	W	T	F	S			
				1	2	3	4					1	2	3	4			1	2	3	4	5	6
5	6	7	8	9	10	11	12	2	3	4	5	6	7	8	7	8	9	10	11	12	13		
12	13	14	15	16	17	18	19	9	10	11	12	13	14	15	14	15	16	17	18	19	20		
19	20	21	22	23	24	25	26	16	17	18	19	20	21	22	21	22	23	24	25	26	27		
26	27	28	29	30	31			23	24	25	26	27	28	29	28	29	30	31					

EQUIPMENT TABLES 5 and 6

Trains 9 and 10  
 Trains 11 and 12  
 Trains 23 and 24

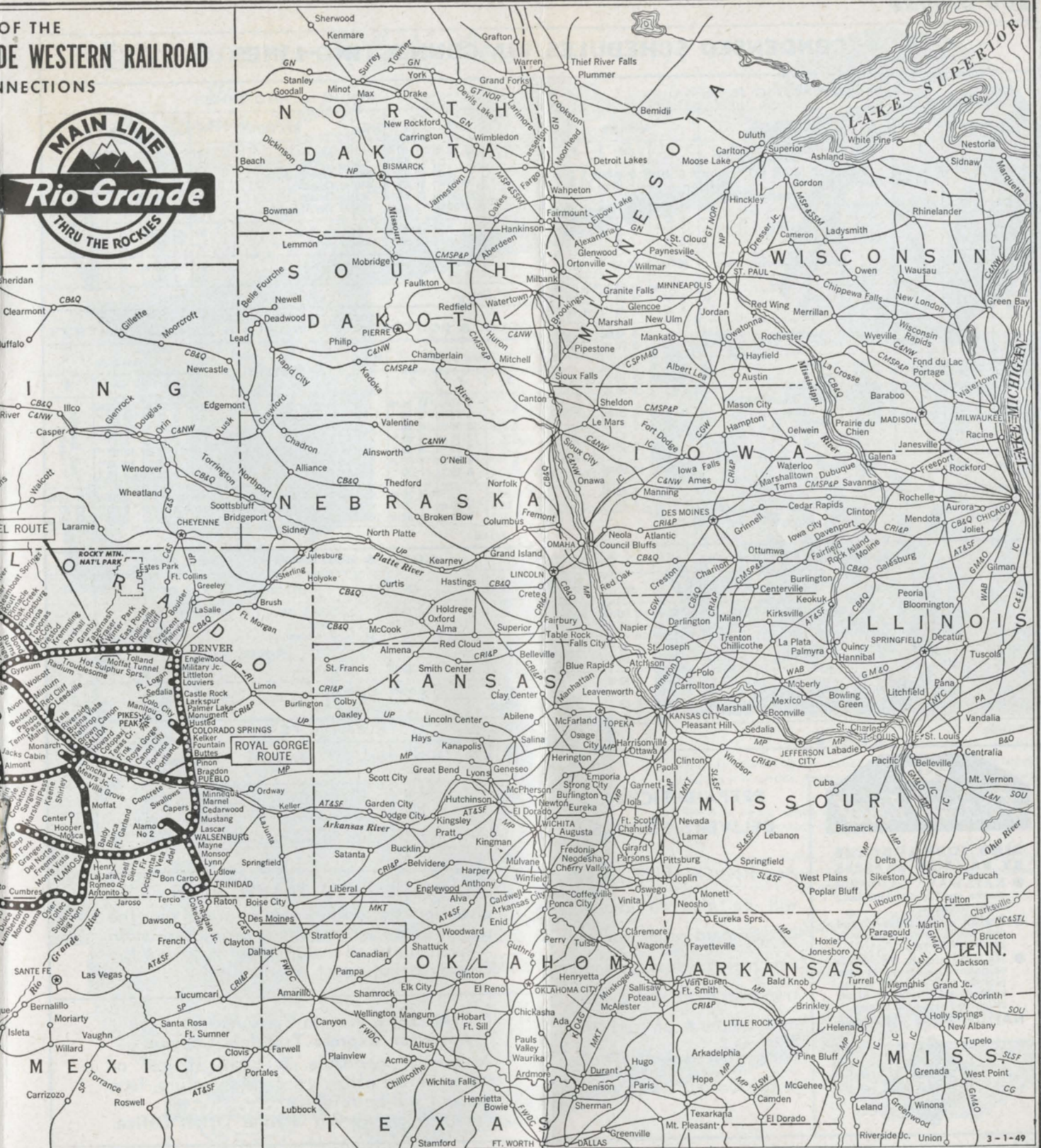
\*Dinette-Coach between Denver and Craig.  
 \*Coach between Salt Lake City and Marysval.  
 Coach-Sleeper (Railroad-owned) between Denver and Craig.  
 \*Air Conditioned.

MAP OF DENVER & RIO GRAND AND CON...





OF THE  
DE WESTERN RAILROAD  
NECTIONS



## CONDENSED SCHEDULES VIA CONNECTING LINES

### UNION PACIFIC R. R.

READ DOWN			Miles	STATIONS		READ UP		
3	1	37		(Mountain Standard Time)		2	38	4
*10 55 PM 3 35 AM	*5 55 PM	*9 40 AM 4 05 PM	0 118	Lv SALT LAKE CITY... Ar Lv Lund... Lv (Pacific Standard Time)	*6 10 AM 11 40 AM	*5 00 PM 11 40 AM	*5 10 AM 12 33 PM	
7 35 AM 11 25 AM	2 30 AM 6 25 AM	8 45 PM 2 00 AM	450 634	Ar Las Vegas... Lv Lv Barstow... Lv (Pacific Standard Time)	7 40 PM 3 52 PM	5 25 AM 12 01 PM	6 50 PM 2 53 PM	
1 30 PM 3 20 AM	8 35 AM 10 40 AM	4 30 PM 7 00 PM	716 813	Lv San Bernardino... Lv Ar Los Angeles... Lv (Mountain Standard Time)	1 50 PM 12 01 PM	9 50 PM 7 30 PM	12 50 PM 11 00 AM	
	31-11	33-17	29		12-32	18-34	30	
*5 30 PM 6 55 AM 10 45 AM	*11 30 PM 1 00 AM 4 45 AM	*5 30 PM 6 55 AM 10 45 AM	0 37 171	Lv Salt Lake City... Ar Lv Ogden... Ar Ar Pocatello... Lv	*9 15 AM 8 00 AM 4 20 PM	10 25 PM 9 05 AM 5 45 PM	*9 15 AM 8 00 PM 4 20 PM	
		5 15 AM 1 30 PM	171 434	Lv Pocatello... Ar Ar Butte... Lv		5 45 PM 9 00 AM	3 45 AM 7 45 PM	
11 20 PM 4 05 AM 7 00 AM	10 15 AM 3 20 PM 6 15 AM		171 415 497	Lv Pocatello... Ar Ar Boise... Lv Ar Huntington... Lv (Pacific Standard Time)	3 55 AM 10 20 PM 7 45 AM	5 15 PM 12 10 PM 9 35 AM		
6 10 AM 11 15 AM	5 25 PM 11 20 AM		497 671	Lv Huntington... Ar Ar Pendleton... Lv	6 35 PM 1 35 PM	8 25 AM 3 25 PM		
	4 15 PM	6 15 AM	931	Ar Spokane... Lv		9 30 PM		
† 7 50 PM † 9 00 AM	† 12 57 PM † 2 15 AM		1035 1074	Ar Tacoma... Lv Ar Seattle... Lv	† 1 00 AM † 11 30 PM	† 5 40 PM † 4 30 AM		

\* Daily.

† Joint Service via G. N.-N. P.-U. P.

### SOUTHERN PACIFIC CO.

	23	Miles	STATIONS		22	24
	*10 15 AM 10 50 PM		0 539	Lv Ogden (Mtn. Std. Time)... Ar Lv Reno (Pac. Std. Time)... Lv	*6 30 PM 5 15 AM	*6 00 PM 4 45 AM
	5 05 AM 7 59 AM 8 50 AM		693 773 782	Ar Sacramento... Lv Ar Oakland... Lv Ar San Francisco... Lv	11 10 PM 8 14 AM 7 30 AM	10 40 PM 7 44 AM 7 00 AM
	8 35 AM 10 00 AM 12 55 PM 7 50 AM		693 741 750 761	Lv Sacramento... Ar Ar Stockton... Lv Ar Fresno... Lv Ar Los Angeles... Lv	6 55 PM 5 40 PM 2 55 AM 8 00 AM	6 55 PM 5 40 PM 2 55 AM 8 00 AM

\* Daily.

FOR

*Pleasant Travel*

### SEND YOUR LUGGAGE BY RAILWAY EXPRESS

- RAILWAY EXPRESS moves swiftly on America's finest trains...
- Receipt given shipper, and one taken from consignee, proving delivery...
- No extra charge for liberal valuation coverage, or for pick-up and delivery within regular vehicle limits in all cities and principal towns.

### NATION-WIDE SERVICE

RAILWAY  
EXPRESS  
AGENCY

### PREPAID TICKET DELIVERY SERVICE

Any RIO GRANDE Agent will be glad to explain our prepaid order service which enables you to send transportation and a limited amount of cash to persons at distant points in the United States.

### ROCK ISLAND LINES

	26-10	8	Miles	STATIONS		7	25
	*1 05 PM 7 00 AM 9 00 AM 11 30 AM 2 10 PM	*1 00 PM 12 45 AM 10 42 AM 11 52 AM 11 59 AM 2 41 AM		0 Lv Denver (M. S. T.)... Ar 0 Lv Colorado Springs... Ar 522 Lv Lincoln (C. S. T.)... Ar 550 Ar Omaha... Lv 550 Lv Omaha... Ar 725 Ar Des Moines... Lv		*8 25 AM 8 35 AM 12 20 AM 11 06 PM 10 51 AM 7 55 AM	*5 30 PM 11 25 PM 9 20 AM
		1 40 PM 2 30 AM	1434 1445	Ar St. Paul... Lv Ar Minneapolis... Lv		12 25 PM 12 01 PM	
	5 06 PM 8 30 AM	5 34 AM 8 50 AM	900 1083	Ar Davenport... Lv Ar Chicago... Lv		4 59 PM 1 55 AM	

\* Daily.

### BURLINGTON LINES

### COLO. & SOUTHERN, FT. WORTH & DENVER CITY RYS.

READ DOWN			Miles	STATIONS		READ UP		
3	7	1				2	8	4
	*7 10 PM 9 10 AM 10 20 AM 12 45 AM 7 12 AM 7 00 PM 8 10 AM	*12 30 PM 2 10 AM 3 00 PM 4 59 AM 9 35 AM 7 30 AM		0 Lv Denver (M. S. T.)... Ar 75 Lv Colorado Springs... Ar 119 Lv Pueblo... Ar 212 Ar Trinidad... Lv 384 Ar Dalhart (C. S. T.)... Lv 802 Ar Fort Worth... Lv 835 Ar Dallas... Lv		*7 30 AM 5 45 AM 4 40 AM 2 43 AM 11 48 PM 3 05 AM 2 00 AM	*9 40 PM 7 45 AM 6 20 AM 3 51 AM 12 07 AM 10 30 AM 9 15 AM	
Sam Houston Zephyr								Sam Houston Zephyr
*4 00 PM 5 00 AM 9 00 AM	*8 00 AM 1 20 PM	*8 20 AM 9 25 AM 1 35 PM	802 835 1085	Lv Fort Worth (F.W.&D.C.)... Ar Lv Dallas (B.-R. L.)... Ar Ar Houston... Lv		9 55 PM 9 00 AM 3 08 AM	*1 25 PM 12 37 AM 8 35 AM	

\* Daily.

### COLO. & SOUTHERN — CB&Q RR.

	29	Miles	STATIONS		30
	*8 15 PM 1 05 AM 5 15 AM 8 20 AM		0 120 241 340	Lv Denver (M. S. T.)... Ar Lv Cheyenne... Lv Lv Wendover... Lv Lv Casper... Lv	*7 15 AM 3 20 AM 10 50 PM 8 00 AM
	x 5 25 PM 6 15 PM			Ar Cody... Lv 670 Ar Billings... Lv	x 9 30 AM 8 45 AM

\* Daily.

x Burlington Bus.

### SANTA FE LINES

	101-2-27	Miles	STATIONS		28-1-102
	*12 01 PM 1 50 AM 2 50 AM 1 10 AM 7 45 AM		0 75 119 553 752	Lv Denver... Ar Lv Colorado Springs... Ar Lv Pueblo... Ar Ar Newton... Lv Ar Oklahoma City... Lv	*2 45 PM 12 44 AM 11 30 AM 3 00 AM 9 00 PM

\* Daily.

### RAIL-AUTO TRAVEL PLAN

gives you the comfort of train travel plus the use of a new automobile at your destination —available at all major cities. Ask your Rio Grande ticket agent for details.

### The SAFE Way to Carry Money . . . American Express Travelers Cheques

As easily spendable as cash; if lost or stolen before affixing second signature, face amount will be refunded. Purchase at any Rio Grande Ticket Office.

# Extra Luxury—No Extra Fare

## The California Zephyr



See Page 2  
for Schedule

### COACHES

Vista-Dome coaches bring new thrills to travelers—new comfort and convenience, too, at thrifty coach rates.

The 46 deep-cushioned reclining chairs in each coach feature folding arm rests, adjustable leg and foot rests, individual reading lights—are all reserved and assigned in advance. In addition, there are 24 seats in each Vista-Dome for coach passengers.

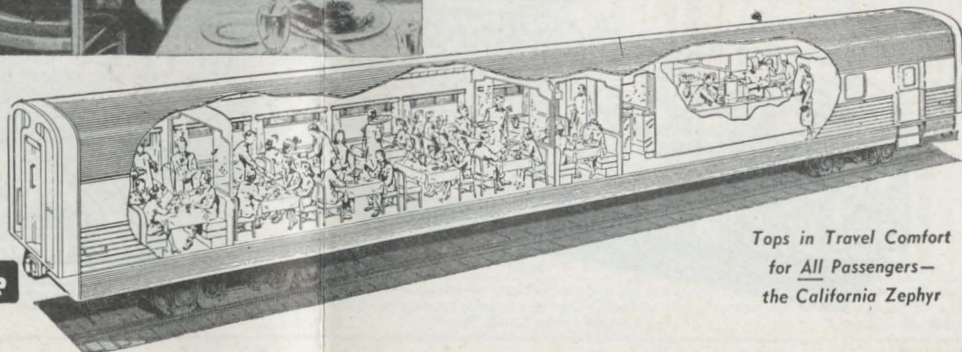
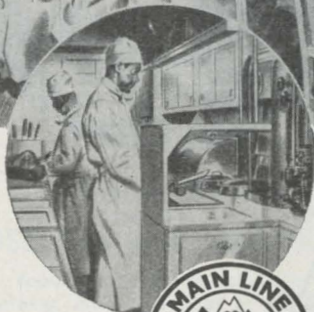


### DINER

The luxurious dining car is open to all passengers. You'll enjoy its congenial hospitable atmosphere and delicious moderately-priced meals.

The main dining room seats 32 at a time, and in addition there are four cozy semi-private dining nooks, each accommodating four people.

In the gleaming, stainless steel kitchen, fine foods are expertly blended into delicious meals. An "air curtain" at the pantry entrance dissipates heat and kitchen odors.



Tops in Travel Comfort  
for All Passengers—  
the California Zephyr



# Tops in Travel Comfort

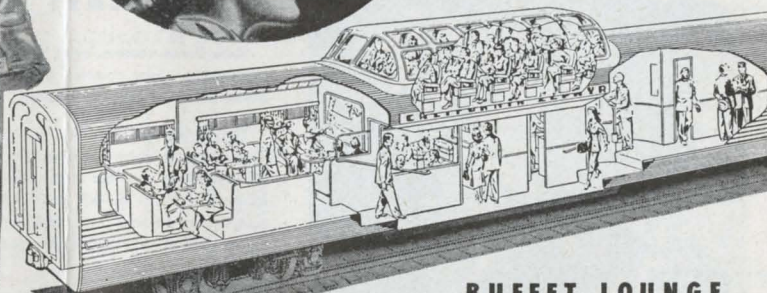
*for All Passengers*

*The  
California  
Zephyr*



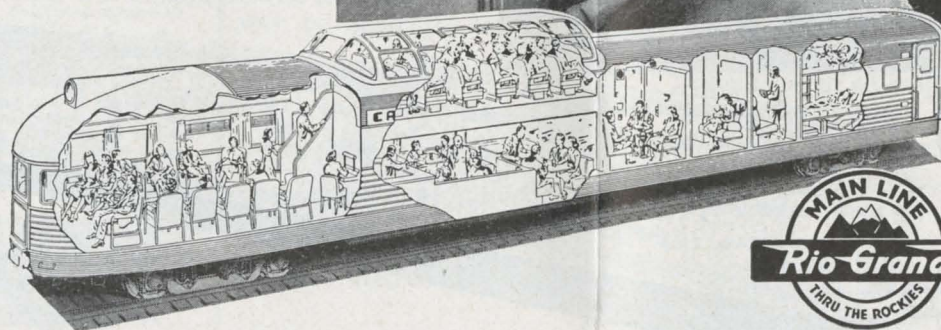
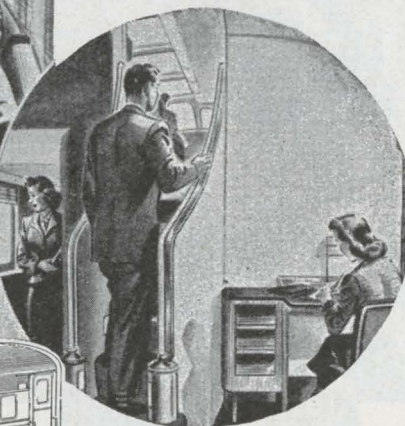
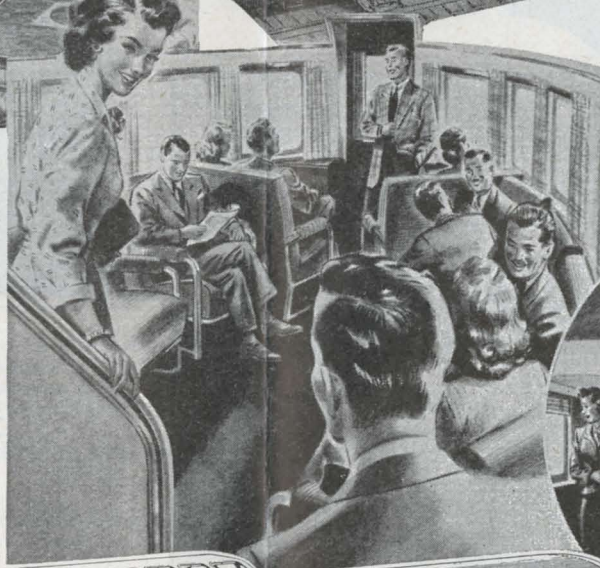
## LOUNGE-OBSERVATION

Spacious and luxurious lounge facilities are provided on three different levels for as many as fifty passengers at a time. The main floor lounge offers deeply-cushioned occasional chairs and settees. Carpeted and individually-lighted steps lead to the Vista-Dome, and nestled beneath the dome is another distinctive buffet section—a delightful rendezvous in which to speed the miles and minutes.



## BUFFET LOUNGE

A "sip and snack" lounge located under the Vista-Dome features intimate built-in sofas in cozy seating arrangements. The forward end of the car is the buffet, serving sandwiches, coffee, and cool, refreshing beverages. These facilities are available to all passengers.



See Page 2  
for Schedule

RAIL AND PULLMAN FARES

The fares shown below are those in effect June 1, 1949, and do not reflect any increase which may be authorized at a subsequent date. These fares are quoted as information only, are subject to change without notice, and they do not include 15% Federal and 2% Utah taxes.

Table with columns: RAILROAD FARES (In Coaches, In Pullmans), One-Way Pullman Fares (Standard Car), and their respective rates for various routes like COLORADO SPRINGS TO, DENVER TO, GRAND JUNCTION TO, PUEBLO TO, SALT LAKE CITY TO, and SAN FRANCISCO TO.

SALT LAKE CITY visitors are welcome to the free noon-day organ recitals presented daily, except Sunday, by celebrated artists in the great domed Mormon Tabernacle, famed for its superb acoustics. Sunday recitals at 4:00 P. M.

Listen to — THE RAILROAD HOUR Every Monday Evening — ABC Network Top Stars — Top Hits — from your Favorite Musical Comedies

Travel Now — Pay Later

USE THE RAIL TRAVEL LOAN SERVICE

Amount of loans can include "extras" such as meals, hotels, clothing, etc., as well as actual transportation costs — take up to 12 months to repay.

Ask your Rio Grande Ticket Agent for complete information and application forms.

FARES FOR OTHER STANDARD PULLMAN ACCOMMODATIONS

Based on charge for Lower Berth as shown in above table. Applies only between points where through Pullman fares are published—not to combination Pullman fares.

Table showing accommodation rates for Roomette Fare, Bedroom Fare, Compartment Fare, and Drawing Room Fare, categorized by berth type (Upper/Lower) and number of persons.

Exclusive Space Occupancy by One Person: One and one-fourth railroad tickets must be purchased for exclusive use of drawing room; one and one-tenth tickets for compartment; one adult rail ticket for a bedroom or roomette. @ Railroad owned sleeper. \* Applies via direct route.

## INFORMATION

**SPECIAL NOTICE.** The time shown in this folder is subject to change without notice; is that at which trains or buses may be expected to arrive at and depart from the several stations, but their arrival or departure at the time stated is not guaranteed. This Company reserves the right to discontinue trains, change schedules, and substitute equipment, and will not be responsible for any delay or other deviation from conditions outlined in this time table.

**ADJUSTMENT OF FARES.** Should any difference arise between yourself and the conductor, pay the fare requested, take receipt for the amount, and refer the matter to the Passenger Traffic Manager, Denver, Colo., for adjustment.

**CHILDREN** under 5 years of age, free, when accompanied by parent or guardian; 5 years of age and under 12, one-half fare; 12 years of age or over, full fare.

**STOPOVERS** are permitted at any point enroute where trains are scheduled to stop, within limit of ticket.

**FREE SIDE TRIP PUEBLO TO COLORADO SPRINGS OR DENVER AND RETURN.** Side trip tickets from Pueblo to Colorado Springs and return will be furnished upon application, westbound to Mo. Pac. conductor or eastbound to D. & R. G. W. conductor into Pueblo, to holders of one-way and round-trip tickets reading over the Mo. Pac., sold at stations east of and including Genesee, Kan., destined to Salt Lake City, Utah, or points beyond, or the reverse. Side trip tickets Pueblo to Denver and return are furnished only in connection with round-trip tickets via the Mo. Pac. sold at and destined to points shown above. The side trip coupons may also be included in original ticket at the time of purchase or secured upon presentation of the through tickets within their limits to UNION DEPOT TICKET AGENT IN PUEBLO, COLO.

**FREE SIDE TRIP SALT LAKE CITY TO OGDEN AND RETURN.** Available to holders of all classes of tickets sold at Denver, Colorado Springs or Pueblo, Colorado, and points east, north or south thereof to destinations beyond Salt Lake City, Utah, via Western Pacific Railroad and to destinations beyond Lynndyl, Utah, via U. P. R. R. or the reverse. This side trip from Salt Lake City, Utah, to Ogden, Utah, and return via D. & R. G. W., may be included in through ticket at time of sale, or furnished by D. & R. G. W. agent at Salt Lake City, without additional charge.

**FREE SIDE TRIP DENVER TO COLORADO SPRINGS AND RETURN.** Arrangements are in effect whereby passengers may obtain free side trips Denver to Colorado Springs and return on certain tickets without additional charge. Side trip tickets may be included in original ticket, or obtained upon presentation of through round-trip excursion ticket, within limit, at Denver Union Station, or any C. B. & Q., C. R. I. & P. or U. P. ticket office at Denver.

**CHOICE OF ROUTES.** Tickets reading via D. & R. G. W. between Denver, Colorado Springs or Pueblo and Salt Lake City or Ogden will be honored either via Canon City and the Royal Gorge or via the Moffat Tunnel Route (Dotsero Cut-off), except as otherwise provided by tariff.

**DENVER & RIO GRANDE WESTERN RAIL TICKETS GOOD OPTIONALLY ON BUSES OF CONTINENTAL BUS SYSTEM, INC.** Tickets good for passage over the Denver & Rio Grande Western rail lines between any two points between which the Continental Bus System, Inc., furnishes motor bus service will be honored on motor buses with some exceptions. Consult agent.

**BEFORE BOARDING TRAINS** ask the ticket agent, brakeman, or conductor whether the train stops at the station to which you may be ticketed. There are stations at which some trains do not stop.

**STOPPING TRAINS ON SIGNAL.** Where trains are scheduled to stop only on signal, passengers on trains must give advance notice to conductor, and persons intending to board trains must advise agent to that effect, in order that necessary arrangement may be perfected.

**TICKET HONORING.** All classes of tickets will be honored on all trains. EXCEPTION: Drivers tickets will be honored on all trains to regular or flag stops (not conditional stops) except that Train No. 1 will stop at any station west of Pueblo where conditional stops are authorized, to discharge passengers holding drovers tickets.

**BAGGAGE.** Personal baggage consisting of wearing apparel, toilet articles (except liquids) and personal effects in actual use, and necessary for the use, comfort and convenience of the passenger while on the journey, may be checked in baggage service. Money, jewelry, silverware, negotiable papers and like valuables, liquids, fragile or perishable articles, radios, household goods and any article intended for others or for sale, must not be enclosed in baggage to be checked. Carriers will not be responsible for such articles.

Passengers are urged to check all baggage except that actually needed for use enroute. They are also urged to check baggage in advance so that it may be forwarded on a preceding train. Every effort will be made to facilitate handling of baggage but the railroad does not guarantee its forwarding on the same train with the owner nor the time of its arrival at destination.

Passengers may check without additional charge 150 pounds of baggage not exceeding \$100 in value on each adult ticket and 75 pounds not exceeding \$50 in value on each child's half-fare ticket. Around the World or Trans-Pacific passengers may check without additional charge 350 pounds not exceeding \$100 in value on each adult ticket and 175 pounds not exceeding \$50 in value on each child's half-fare ticket.

Each passenger has the privilege of declaring a higher value than the free allowance on his baggage at time of checking. A nominal charge will be made for each \$100, or fraction thereof, declared in excess of the free allowance. The value of baggage checked on one ticket is limited to \$2,500. No single piece of baggage exceeding 300 pounds in weight, 72 inches in greatest dimension, or \$2,500 in value, will be accepted.

Bicycles, baby carriages, guns (not small firearms), and similar articles enumerated in the tariff, when used in connection with the journey, may be checked and included in weight and value of passenger's baggage. The maximum liability on such articles is deemed by the carriers to be not in excess of \$25 unless a higher value is separately declared and paid for at time of checking, on each shipment of such articles for each \$100, or fraction thereof, of additional value declared.

Each piece of baggage should be marked or tagged with passenger's name and address and the passenger's name and permanent address should be placed inside of each piece of baggage whether it is checked or carried on the train.

Storage charges will be assessed on baggage not claimed within 24 hours after its arrival at destination.

Dogs and other household pets may be checked in baggage service subject to tariff rules. Dogs may be checked on leash when securely muzzled and provided with close fitting harness or collar, but should be in crates or other suitable containers, and claimed immediately upon arrival at destination. Carriers do not assume obligation to store or care for dogs at stations. Passengers must attend to feeding and watering dogs enroute and at stations. Passengers should inform themselves regarding quarantine regulations before checking dogs or other animals. When handled on trains without train baggage-men, they will be moved only at owner's risk. Small dogs and other animals, when in baskets or other containers may be taken into private room accommodations of sleeping cars.

Baggage checked to a station having no agent must be called for at the baggage car by owner upon reaching such station and duplicate checks surrendered to train baggage-man; otherwise baggage will be carried to first station beyond, where there is an agent.

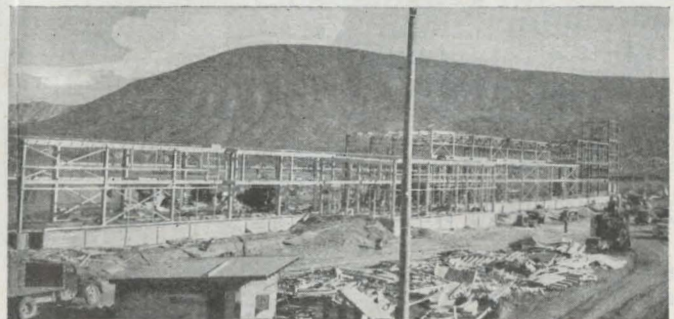
Parcel rooms and parcel checking lockers are maintained in station waiting rooms at all important points.

**LOST ARTICLES.** Agents will assist in the recovery of lost articles. Passengers should not only give full description of the property, but should state date of loss, number of train and whether left in coach or Pullman car. All lost articles found in coaches on this line are forwarded to J. H. Tanner, Manager of Mail, Baggage and Express Traffic, Denver, Colo., and those found in sleeping cars are forwarded to The Pullman Co. Address the District Superintendent, The Pullman Company, at Denver, Colo., or Salt Lake City, Utah. No responsibility is assumed for unchecked articles left in stations or cars.

## Your Industrial Opportunity - The Rocky Mountain Empire

Long famous for its wealth of natural resources, the territory served by the Rio Grande in Colorado and Utah is rapidly attaining industrial stature. Equable climate, a stable labor market and pleasant living conditions are attractive to industry. A dependable transportation system smooths the way from producer to processor to consumer. Your inquiry will be handled promptly and confidentially.

E. L. Beardsley  
 Director of Industrial Development  
 Denver & Rio Grande Western Railroad  
 1531 Stout Street — Denver 2, Colorado



# DENVER & RIO GRANDE WESTERN RAILROAD

## PASSENGER AND FREIGHT REPRESENTATIVES

Call, phone or write our nearest representative for information regarding fares, sleeping car reservations, connections or our descriptive literature. They will gladly assist you in every possible way with your travel and shipping problems.

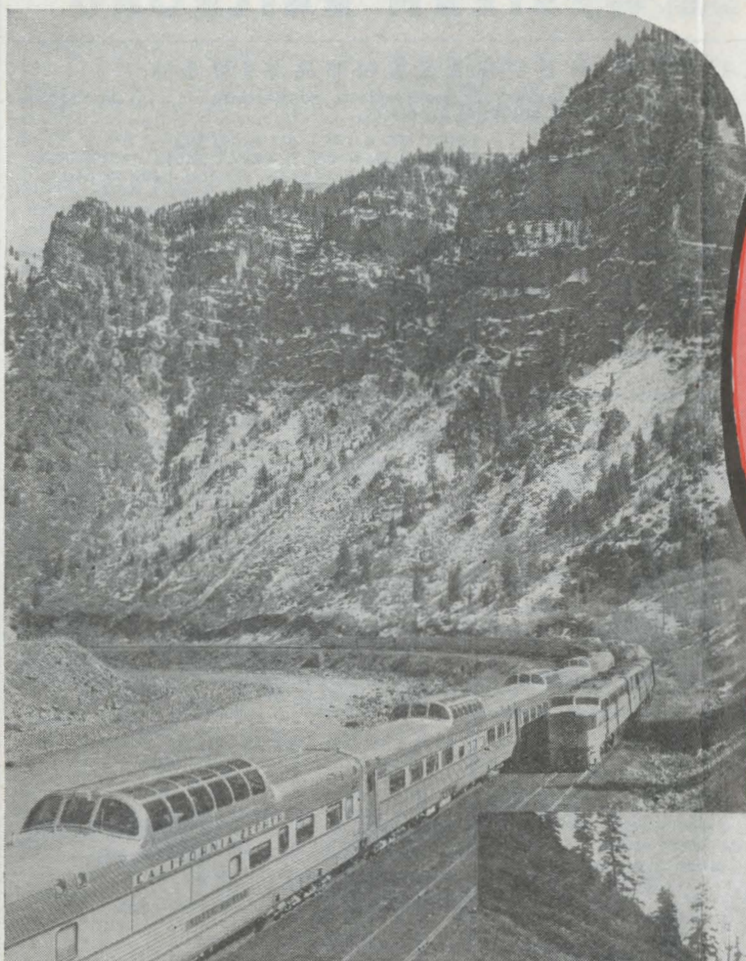
- ALAMOSA, COLO.—Rio Grande Freight Depot—Phone 210  
R. W. CLARK, District Freight & Passenger Agent.
- ATLANTA 3, GA.—1521 Healey Bldg.—  
57 Forsyth St. N. W.—Lamar 4831  
R. E. KNIGHT, General Agent.
- BOSTON 16, MASS.—411 Little Bldg.—  
80 Boylston St.—Liberty 2-9891  
C. O. TOBIAS, General Agent.
- CHICAGO 3, ILL.—Suite 2307 Bankers Building—  
105 West Adams St.—Randolph 6-7445  
J. B. WILLIAMS, Assistant Traffic Manager.  
D. J. LEWIS, Commercial Agent.  
S. C. NELSON, District Passenger Agent.  
W. H. MESTER, City Passenger Agent.  
E. J. CERNY, City Ticket Agent.  
J. A. BURKE, Perishable Freight Agent.  
B. F. GALLAGHER, Traveling Freight & Passenger Agent.  
....., Traveling Freight & Passenger Agent.  
E. S. MORGAN, Traveling Freight & Passenger Agent.  
R. E. DAVIS, City Freight Agent.  
S. W. BAITLEY, City Freight Agent.  
M. L. COLBY, City Freight Agent.
- CINCINNATI 2, OHIO—1431 Enquirer Bldg.—  
617 Vine St.—Parkway 3212  
A. C. DICK, General Agent.  
E. H. NELSON, Traveling Freight & Passenger Agent.
- CLEVELAND 13, OHIO—509 Terminal Tower Building—  
50 Public Square—Cherry 7386  
W. M. DODDS, General Agent.  
A. S. EATON, District Freight & Passenger Agent.
- COLORADO SPRINGS, COLO.—  
Suite 317 Exchange National Bank Bldg.—  
6 South Tejon St.—Main 2884  
E. D. MORRISON, General Agent.  
H. L. JOHNSON, District Freight & Passenger Agent.
- CRAIG, COLO.—Rio Grande Freight Depot—Phone 340  
B. F. MOORE, District Freight & Passenger Agent.
- DALLAS 1, TEXAS—607 Great National Life Building—  
1604 Main St.—Phone Central 6322  
J. B. LATIMER, General Agent.  
T. J. BACON, District Freight & Passenger Agent.
- DENVER 2, COLO.—  
Rio Grande Bldg.—1531 Stout St.—Acoma 5533  
City Ticket Office—Room 101—Main Floor  
H. M. COX, General Agent, Passenger Department.  
C. E. SPECHT, City Ticket Agent.  
B. E. GREGORY, JR., City Passenger Agent.  
C. L. RAHNE, City Passenger Agent.  
C. G. MCKAY, Depot Passenger Agent.  
T. D. JOHNSON, Depot Passenger Agent.  
Freight Department—Room 100—Main Floor  
E. K. WEST, General Agent, Freight Department.  
C. M. WILDT, City Freight Agent.  
A. L. BURSON, City Freight Agent.  
A. D. COX, City Freight Agent.  
H. C. McVEAN, Traffic Representative.  
D. J. IZETT, Livestock Agent.
- DETROIT 2, MICH.—8-268 General Motors Bldg.—  
3044 West Grand Blvd.—Trinity 5-3025  
P. O. SPURGEON, General Agent.  
W. A. SIEBERT, Traveling Freight & Passenger Agent.  
J. H. KRESS, Traveling Freight & Passenger Agent.
- EUGENE, ORE.—203 Ardel Offices  
33 10th Avenue East—Phone 2991  
J. T. HULL, Commercial Agent.
- FRESNO 1, CAL.—207 T. W. Patterson Bldg.—  
2014 Tulare St.—Phone 4-3290  
M. E. PYEATT, General Agent.
- GRAND JUNCTION, COLO.—  
Rio Grande Freight Depot—Phone 3021  
W. J. MOORE, General Agent.
- KANSAS CITY 6, MO.—524 Railway Exchange Bldg.  
705 Walnut St.—Victor 5520  
W. D. FERNALD, General Agent.  
J. W. SAMPLE, Traveling Freight & Passenger Agent.  
J. D. KEY, Traveling Freight & Passenger Agent.
- LOS ANGELES 14, CAL.—724 Pacific Mutual Bldg.  
523 West 6th St.—Madison 9-2156  
A. R. ANDERSON, General Agent.  
O. V. HOWARD, District Passenger Agent.  
G. L. NICOLIN, Perishable Freight Agent.  
H. E. HOPE, City Freight Agent.  
L. S. BRISTOL, City Freight Agent.  
E. D. BURKE, City Freight Agent.
- MINNEAPOLIS 2, MINN.—360 Rand Tower  
527 Marquette Ave.—Atlantic 7888  
C. W. CAMPBELL, General Agent.
- NEW YORK 18, N. Y.—500 Fifth Ave., Room 220.  
Chickering 4-7515  
V. A. FARRELL, Assistant Traffic Manager.  
W. C. RUBIEN, District Passenger Agent.  
T. V. SIMMONS, City Passenger Agent.  
G. L. KENNY, Commercial Agent.  
C. J. DOBOL, Perishable Freight Agent.  
J. W. WESTLAKE, Traveling Freight & Passenger Agent.  
J. J. O'DONNELL, Traveling Freight & Passenger Agent.  
E. K. YAEGER, City Freight Agent.  
W. B. HARAHAN, City Freight Agent.
- OAKLAND 12, CAL.—514 Central Bank Bldg.—  
14th & Broadway—Glencourt 1-4925  
R. E. DAVIS, General Agent.  
W. B. WAGNER, City Freight Agent.  
H. H. HILL, City Freight Agent.
- OGDEN, UTAH—Rio Grande Freight Depot  
130 24th Street—Phone 4416  
C. F. MOULTON, General Agent.
- OMAHA 2, NEB.—  
313 Grain Exch. Bldg., 19th & Harney—Jackson 5100  
S. L. LOCKWOOD, General Agent.  
R. G. SCHWARTZ, Traveling Freight & Passenger Agent.  
O. F. WAGNER, Traveling Freight & Passenger Agent.  
E. W. DeJONG, Traveling Freight & Passenger Agent.
- PITTSBURGH 22, PA.—1410 Oliver Bldg.  
535 Smithfield St.—Atlantic 2766  
U. E. LLOYD, General Agent.  
F. E. HILL, Traveling Freight & Passenger Agent.  
T. J. NOLAN, Traveling Freight & Passenger Agent.
- PORTLAND 4, ORE.—417 Pacific Bldg.  
520 S. W. Yamhill St.—Beacon 6104  
W. M. KIRKPATRICK, Assistant Traffic Manager.  
N. W. VORPAHL, Traveling Freight & Passenger Agent.
- PROVO, UTAH—Rio Grande Freight Depot  
6th South and 3rd West—Phone 240  
S. D. BURNSIDE, District Freight & Passenger Agent.  
H. J. STAGG, Traffic Representative.
- PUEBLO, COLO.—Suite 227 Central Bldg.—  
120 N. Main St.—Phones 5510, 6842  
J. M. JENSEN, Assistant Traffic Manager.  
E. W. SANFORD, District Freight & Passenger Agent.  
W. M. LEWIS, Traveling Freight & Passenger Agent.
- RENO, NEV.—98 Sunnyside Drive—  
Phone 2-1373  
J. B. HUNTER, General Agent.
- SACRAMENTO 14, CAL.—926 Forum Bldg.  
1107 Ninth Street—Phone Hudson 4-4432  
H. I. SCOFFIELD, General Agent  
C. B. LOWRY, Traveling Freight & Passenger Agent.
- ST. LOUIS 3, MO.—  
1218 Olive St., Suite 1210—Garfield 3670  
H. A. ROBERTSON, Assistant Traffic Manager.  
F. D. LUCAS, District Freight & Passenger Agent.  
H. A. DEHNE, Commercial Agent.  
J. M. SINCLAIR, Traveling Freight & Passenger Agent.
- SALT LAKE CITY 1, UTAH—  
24 South Main Street—Phone 4-6551  
H. J. RIGGERT, Assistant Traffic Manager.  
D. P. HEINER, General Agent, Passenger Dept.  
R. S. LAWRENCE, General Agent, Freight Dept.  
J. M. ALDRICH, Commercial Agent.  
G. W. BUNNER, City Passenger Agent.  
F. J. MANGAN, City Ticket Agent.  
J. C. WALDIE, Depot Passenger Agent.  
J. L. HILL, Traveling Freight Agent.  
CECIL PEARSON, City Freight Agent.  
B. H. OCKEY, City Freight Agent.  
WILLARD RICHARDS, Special Traffic Representative.
- SAN FRANCISCO 5, CAL.—291 Monadnock Bldg.—  
681 Market St.—Garfield 1-2688  
J. K. SPEIGHT, General Agent.  
F. L. WAGNER, District Passenger Agent.  
R. G. DeGUIRE, City Passenger Agent.  
M. E. CHASE, Commercial Agent.  
M. W. WELDON, Commercial Agent.  
C. R. LENNIG, Traveling Freight & Passenger Agent.  
C. A. TEUTSCHEL, Traveling Freight & Passenger Agent.  
G. A. CRONIN, City Freight Agent.  
J. McMILLAN, City Freight Agent.  
C. E. MILLS, City Freight Agent.  
W. T. McMILLIN, City Freight Agent.
- SEATTLE 1, WASH.—552 White-Henry-Stuart Bldg.  
4th & University—Eliot 8482  
....., Commercial Agent.
- WASHINGTON 5, D. C.—535 Shoreham Bldg.  
15th & H Sts. N. W.—Executive 0373  
J. L. HENNING, General Agent.  
P. P. MAGUIRE, Traveling Freight & Passenger Agent.

**F. C. HOGUE, Vice President—Traffic, Denver, Colo.**  
**O. J. GRIMES, General Traffic Manager, Denver, Colo.**

**H. F. ENO**  
Passenger Traffic Manager  
Denver, Colo.  
**C. J. DOMBROW**  
Assistant Passenger Traffic Manager  
Denver, Colo.  
**P. K. YONGE**  
Director of Agriculture  
Denver, Colo.  
**E. L. BEARDSLEY**  
Director of Industrial Development  
Denver, Colo.

**W. M. CAREY**  
General Freight Traffic Manager  
Denver, Colo.  
**F. J. TONER**  
Freight Traffic Manager  
Denver, Colo.  
**G. C. CLEGG**  
Eastern Traffic Manager  
Chicago, Ill.  
**C. J. HARBEKE**  
Western Traffic Manager  
San Francisco, Cal.

**T. K. EARLEY**  
Assistant Freight Traffic Manager  
Denver, Colo.  
**Q. A. KELLOGG**  
Assistant Freight Traffic Manager  
Denver, Colo.  
**H. F. BURNAUGH**  
Assistant Freight Traffic Manager  
Denver, Colo.  
**A. A. BOLTON**  
Assistant Freight Traffic Manager  
San Francisco, Cal.



Travel-wise Americans—and they are legion—have taken the California Zephyr to their hearts. There is nothing strange about this, because the California Zephyr has brought extra comfort and extra travel delights hitherto undreamed of—at NO EXTRA FARE. Next time you travel between Chicago and San Francisco, treat yourself to a ride on this finest of all trains. Any Rio Grande representative in any of the cities listed in this folder will be pleased to assist you in arranging details of your trip, whether it be for business or for pleasure.

