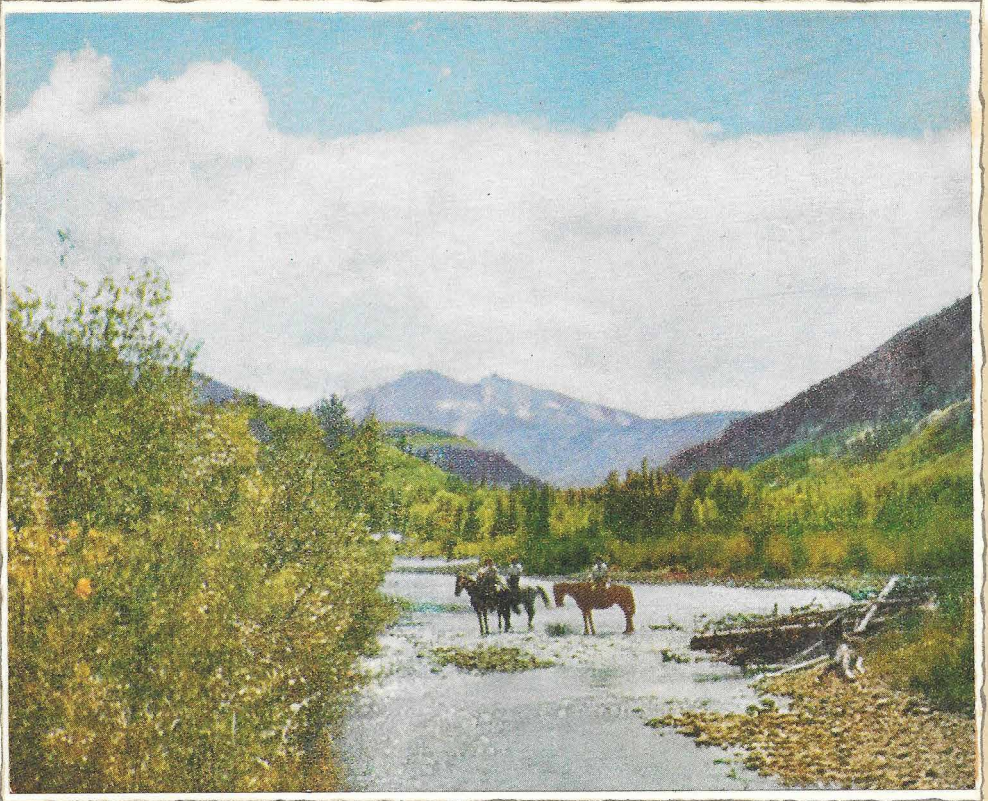


Breakfast



Sportsman's Paradise

Rio Grande

Rio Grande

NATIONAL ASSOCIATION POSTAL

SUPERVISORS

Enroute

to

CONVENTION

Los Angeles, Calif.

September 20-24, 1948

Via

ROYAL GORGE ROUTE

THRU THE ROCKIES

Souvenir Menu

Breakfast

1 1 1

Orange Juice

Grapefruit Juice

Kadota Figs

Breakfast Prunes

Sliced Fresh Peaches

Chilled Cantaloupe

Choice of Hot or Dry Cereals

Panned Fillet of Fish, Lemon Butter

Omelette with Jelly

Ham or Bacon with Eggs

Muffins

Toast

Coffee

Tea

Cocoa

Milk

\$1.50



Sportsman's Paradise

The sparkling Crystal River traces a lively silver pattern through the lush green forest carpet that clothes the base of Chair Mountain, in Colorado's vast Glenwood Springs recreational region. In the romantic Rocky Mountains—this protean land of eternal poetry—the bored urbanite finds solace from the mad metropolitan whirl, amid myriad scenes of unsurpassed splendor. This is Nature's invitation to shake the city's dust and grime from weary feet and hit the wilderness trails—to regain peace of mind and rest in serene contemplation of God's great outdoors. Here, too, is a sportsman's paradise. In placid lakes and rushing streams fighting mountain trout tantalize the most adept angler. Deer, elk, bear and mountain lion lead the big game hunter a merry chase through immense forests. For the horseman there are sturdy, sure-footed mounts, and the gentle creak of saddle leather along divers bridle trails. For all who come here there is the sentient thrill of Nature's intimacy in a land of truly magnificent proportions.

DENVER AND RIO GRANDE WESTERN RAILROAD