

GRAY LINE MOTOR TOURS
AND
MANITOU & PIKES PEAK
COG RAILWAY

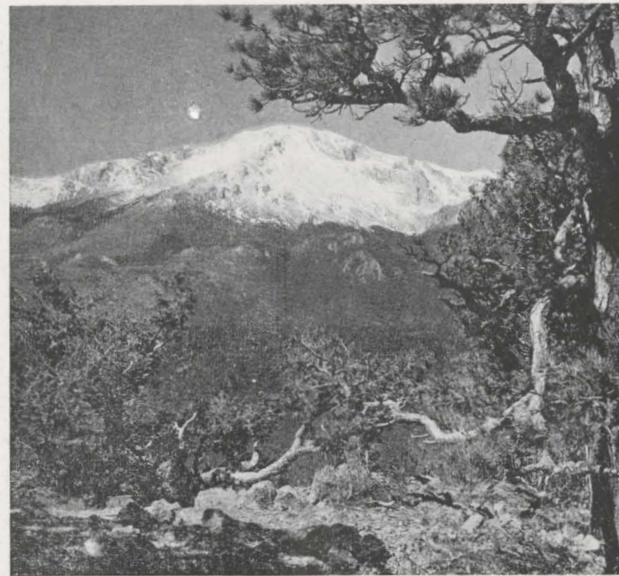
**DIVERSE ROUTE
TO
PIKES PEAK**

4½ Hours of Scenic Grandeur
Over World Famous Cog
Road and Auto Highway
A Marvelous Combination
Trip — \$5.00
ADD FEDERAL TAX 75c

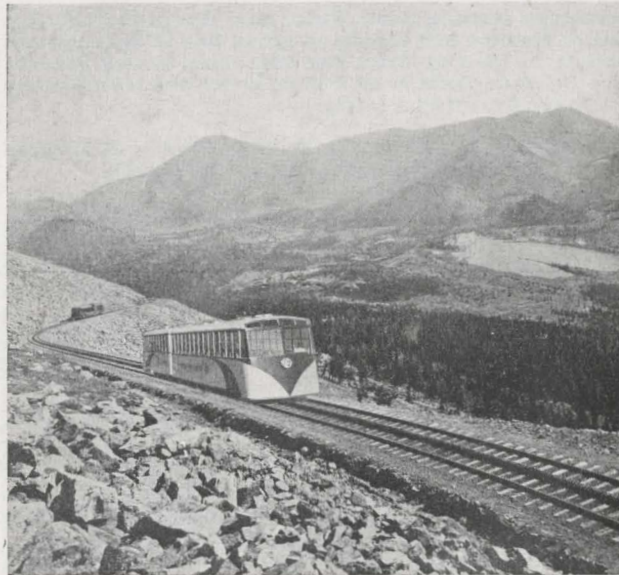
To Equalize Traffic, Option Is
Reserved in Routing Passengers



GRAY LINE DELUXE EQUIPMENT
AT REGULAR P. U. C. PRICES



VIEW OF PIKES PEAK FROM RAMPART RANGE



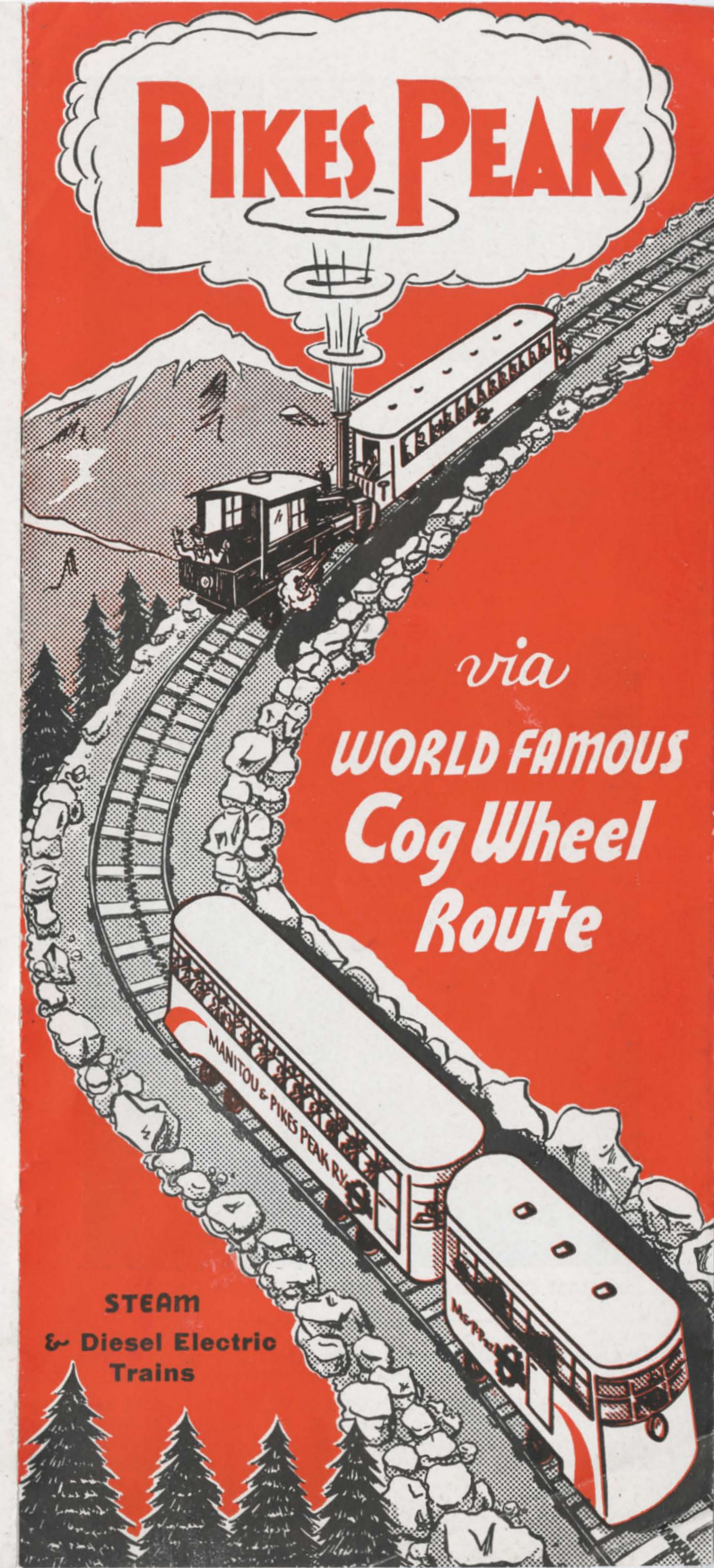
DIESEL ELECTRIC TRAIN CLIMBING PIKES PEAK



Manitou Springs Office
COG STATION, MANITOU, Phone Hyland 25
SODA SPRINGS PAVILION, Phone Hyland 164
Colorado Springs Ticket Office
103 East Pikes Peak Ave., Phone Main 4900

WM. B. HALL, JR.,
ASST. GEN. MGR.

NAT G. LEONARD,
TRAFFIC MGR.





OPENING COG ROAD IN THE SPRING



STEAM COG TRAIN IN PICTURESQUE CANON

Compare with Pikes Peak Cog Ry., the following elevations above sea level of principal European cog railways:

- Mt. Rigi, Switzerland (Arth Rigi R. R.) . . . 5,832 feet
- Mt. Pilatus, Switzerland (Pilatus R. R.) . . . 6,967 feet
- Jung Frau Ry., Switzerland . . . 11,342 feet
- Pikes Peak Cog Ry. 14,110 feet

CLIMB PIKES PEAK on the WORLD FAMOUS COG RAILWAY

Operating Diesel Electric and Steam Trains
With Glass Enclosed Observation Cars

This is the trip you'll never forget—a trip that you can tell your grandchildren about! It defies description by word or photograph! You'll have to see the continuous panorama of scenic beauty to appreciate the grandeur of America's most famous peak.

On November 13, 1806, Lt. Zebulon M. Pike of the U. S. Army discovered the peak that later was to bear his name. That winter his expedition tried without success to climb to the summit, and he left for Washington with the statement it would never be climbed by mortal man. Since the Cog Road was built at the close of the 19th century, thousands of visitors have taken the trip and marvelled at the view from the top of Pikes Peak.

How to Make the Trip

Passengers starting from Colorado Springs take Bus marked Manitou and change at end of line at Soda Springs Pavilion to the Cog Road Bus that runs to Cog Station; leave Colorado Springs by 8:10 A. M. for the morning trip or 1:10 for the afternoon trip.

Or drive your auto to Cog Railway Station at Manitou Springs; parking privilege free while trip is made.

COG ROAD TIME TABLE

As schedules are subject to change on short notice it is advisable to inquire at Company office.

West Bound		Summer Time Table		East Bound	
*14	12	STATIONS		Eleva-	*13
PM	AM			tion	Daily
2:00	9:00	.0	Lv. Mountain Time		PM
		1.16	Manitou	6,562	12:10
2:18	9:18	1.84	Butterworth	7,793	5:10
2:25	9:25	2.63	Minnehaha	8,332	11:56
		3.21	Half-way House	9,010	4:56
		4.62	Ruxton Park	9,705	4:50
2:37	9:37	6.65	Mountain View	10,012	11:38
3:00	10:00	7.13	Windy Point	12,129	4:38
		8.90	Saddle	12,566	11:18
3:20	10:20		Summit	14,110	4:18
PM	AM		"Safety First"		11:00
					4:00
					AM
					PM

The Cog Road opens June 1st, closing in September depending upon climatic conditions.

Coupon and prepaid ticket orders will be honored at our Colorado Springs office, including bus fares both directions between Colorado Springs and Manitou Springs, Cog Station.

PIKES PEAK Round Trip-----\$5.00 add Fed. Tax 75c
CHILDREN, Ages 5 to 12 Years-----\$2.50 add Fed. Tax 38c

SUMMIT HOUSE: The Summit House is the terminal station for both the Cog Road and auto highway; it has lunch room, souvenir store, telegraph and telephone office, and the observation tower annex.

BY DIVERSE ROUTE You See Both Sides of Pikes Peak



FAMOUS PIKES PEAK AUTO HIGHWAY

You will "discover" the northwest side from the Gray Line limousines over the famous Pikes Peak auto highway and then see an entirely different panorama of scenic mountain splendor on the Cog train. The Diverse Route trip is really two tours for the price of one . . . instead of going up to the Peak and back again by train and then, perhaps, going up and back by auto, you may take the Diverse Route . . . one way by auto . . . one way by train for one-half the cost of the two trips . . . You see everything there is to see and save several hours time, too.

You may send a telegram home from the world's highest telegraph station on the summit . . . see the bottomless pit . . . look out over 100 miles in all directions at the rugged grandeur of the Rockies.

The Diverse Route trip requires 4½ hours and leaves daily at 8:10 a. m. and 1:10 p. m. from main office, 103 East Pikes Peak Avenue, or at 8:45 a. m. and 1:45 p. m. from Manitou office.

PIKES PEAK by DIVERSE ROUTE \$5.00 add Fed. Tax 75c
CHILDREN, ages 5 to 12 . . . \$2.50 add Fed. Tax 38c