

# THE DENVER & SALT LAKE RAILROAD COMPANY



POPULARLY known as "THE MOFFAT ROAD" is projected to follow the shortest practical route between Denver, Colorado, and Salt Lake City, the world-renowned "CITY OF THE SAINTS" in Utah-land. When completed, it will possess the powerful economic and commercial advantages of being the shortest railroad line between those greatest of all the interior cities between the Missouri River and the Pacific Coast.

The railroad is completed and in operation to CRAIG, a distance of two hundred and fifty-five miles, and construction will soon be in progress beyond that interesting little city, famous as the center of a remarkably rich agricultural and stock country. When finished it will accomplish the opening of a new and wonderful domain overflowing with the substantial elements making for human happiness and wealth, and destined to become the home-land of hundreds of thousands of prosperous and contented people.

The beautiful city of DENVER is situated very near to the eastern foothills of the ROCKY MOUNTAINS, and in the planning and construction of this short-line railroad the highest engineering skill was employed in locating and building it directly to, through and over those gigantic barriers, and not to follow the usual plan of a more circuitous and less expensive route around; hence this marvelous railroad reaches CORONA, upon the CREST OF THE MAIN RANGE OF THE MAJESTIC "ROCKIES," at an altitude of 11,660 feet above the level of the sea, in a distance of but sixty-five miles, or about three hours' ride from Denver!

"FROM SUMMERTIME TO THE BEAUTIFUL SNOW." Up there on "THE TOP O' THE WORLD" are lovely stretches of verdure, bespangled with myriads of beautiful blossoms, alternating with great drifts of glistening snow.

The train leaves Denver at a convenient hour in the morning, and arrives at Corona about noon, providing ample time for sight-seeing and luncheon, and returning to Denver about 5:30 p. m. the same day.

The unequaled scenic attractiveness of this section of the line will forever constitute it the most remarkable and popular one-day scenic excursion trip by railroad from Denver or any other city in America, if not in the world.

"Never in all my travels have I seen such wonderful scenery, such a diversity of landscape; and the fact that it is all condensed into so short a trip makes it all the more remarkable," declared Mr. Percival Farquhar, the "Harri-man of Brazil," after his return from the trip in July, 1911, with his party of Brazilian railroad men and financiers.

The scenic illustrations herein displayed are but examples of the constantly varying and almost bewildering array of everything most beautiful, sublime and impressive in Rocky Mountain scenery everywhere meeting the delighted vision of the passengers on the comfortable vestibuled trains of this wonderful standard-gauge railroad. The surpassing beauties of its scenic interest are not restricted to the limits of these delightful one-day trips, but continue in constantly renewed enjoyment all the way to Craig for those passengers so fortunate as to make the complete journey.

THE VAST AGRICULTURAL EMPIRE BEING OPENED BY THE BUILDING OF THIS RAILROAD OFFERS EXCEPTIONAL OPPORTUNITIES TO THOSE SEEKING A HOME IN THIS NEW WEST.

For Information and Literature address the undersigned.

## FARES FOR THE ROUND TRIP (May 15 to October 31)

Denver to Tolland:  
(Short Scenic Trip)

Daily . . . . . \$2.50

Denver to Corona and Return:  
(Top o' the World)

Daily . . . . . \$4.50

Favorable round-trip rates to Steamboat Springs, Hayden, Craig and intermediate points, with thirty days' limit. Further desired information upon request.

A. R. STITH,  
Traveling Passenger Agent

C. E. GOODY,  
General Agent, Passenger Department

CITY PASSENGER AND TICKET OFFICE, 719 SEVENTEENTH STREET

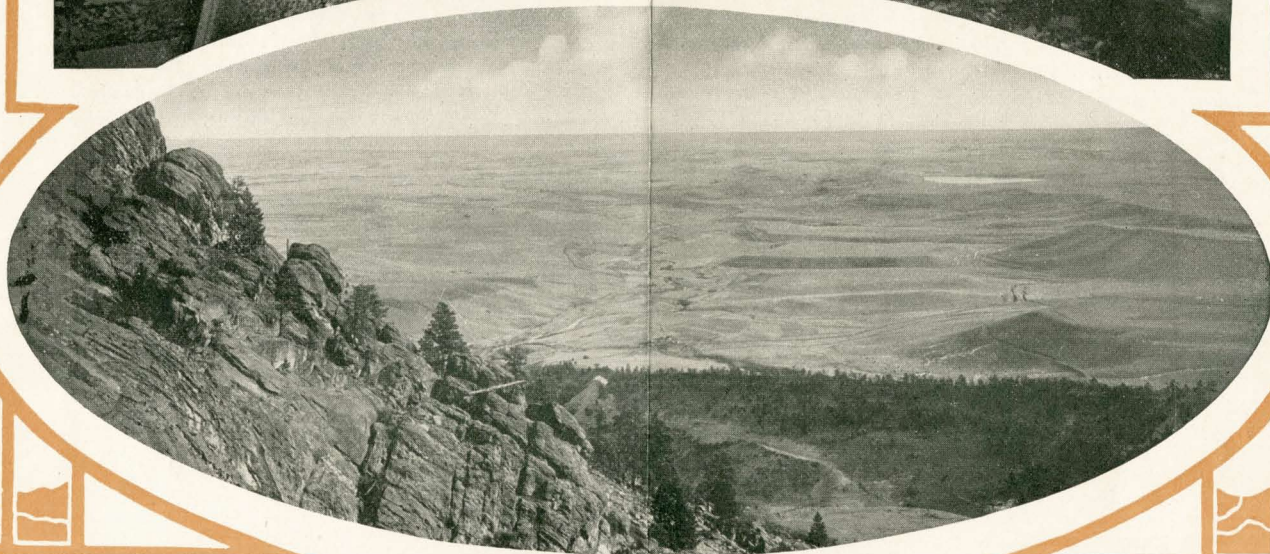
W. H. PAUL, General Freight and Passenger Agent,  
Cafe parlor cars on all trains First National Bank Building, Denver, Colo.

Excellent meals or lunches  
at Tolland or Corona

THE WILLIAMSON-HAFFNER CO., PRINTERS, DENVER



## DENVER & SALT LAKE RAILROAD



### MOUNTAIN AND PLAIN

Magnificent views from the mountainside overlooking the great plains dotted with streams, lakelets and small towns. In this highly rarefied atmosphere these clear views cover distances of about sixty miles plainsward. Railroad distance is about twenty-six miles from Denver. Altitude, 7,040 feet above the level of the sea.



## DENVER & SALT LAKE RAILROAD



### THE GIANT PALISADE

Another most impressive view exhibiting a stupendous and extraordinary rock formation, with another glimpse of the plains stretching eastward from the same vicinity as on the preceding page.





## DENVER & SALT LAKE RAILROAD



### BOULDER CANYON AND PEAK VIEW

Here the railroad threads its varying way through the surpassingly interesting Canon close to the splashing, rushing waters of South Boulder Creek. The gleaming waters of this remarkably picturesque mountain streamlet lend a charming attraction to the passengers whose happy fortune is sending them over this matchless scenic trip. One beautiful vision of mountain peak, canon and stream is rapidly succeeded by another still more interesting. LOWER PICTURE—The Hanging Rock. Illustrating the wild, rugged region through which this remarkable railroad has forced its way in its ascent toward the summit of the main range.



## DENVER & SALT LAKE RAILROAD



### JUST UNDER THE TURQUOISE SKY

The Utmost Rocks of the Summit of the Majestic "Rockies" near Corona

Twelve Thousand Feet Above the Level of the Sea

Bravely and long these charming maidens climbed on a summer's day. Further they could not go without the attachment of wings triumphant, which one radiant day may surely follow their terrestrial attachments. LOWER PICTURE—Picturesque view of Boulder Park from the mountainside above Tolland, en route to the summit near mile post 50.



## DENVER & SALT LAKE RAILROAD



### THE SUMMIT OF THE CONTINENTAL DIVIDE

Eleven Thousand Six Hundred and Sixty Feet Above the Level of the Sea

The highest point reached by a standard-gauge railroad in America. Distance from Denver station, sixty-four miles. Within this distance the train has climbed skyward ONE MILE, TWELVE HUNDRED AND TEN FEET! LOWER PICTURE—CHALLENGE OF THE SNOWBIRDS AT CORONA. A charming group in warlike array, July 28, 1912. This is "THE TOP O' THE WORLD"—the refreshing region of perennial snow! Its majestic surroundings and wintertime characteristics in summertime are sources of infinite delight to thousands each season.



## DENVER & SALT LAKE RAILROAD



### YANKEE DOODLE LAKE

More than ten thousand feet above the level of the sea, and sixty miles from Denver, with its surrounding vesture of beautiful snow, nestles this lovely lakelet of unfathomed depth, whose clear, flashing waters of emerald green charm the delighted vision of all beholders. The glittering rails of this marvelous standard gauge railroad almost encircle it as with ribbons of steel; and just beyond is its best-beloved companion and neighbor, Dixie Lake, and then—

THE CREST OF THE CONTINENT



## DENVER & SALT LAKE RAILROAD



### PANORAMIC VIEW OF BEAUTIFUL

This marvel among the many scenic attractions of this famous railroad is without a peer elsewhere from Denver, and at an altitude of 8,889 feet above the level of the sea. It is the terminus of the line from the west. —————> Indicates Eastern Portal of proposed Tunnel. This tunnel, when completed, will cross the range over the main range. It will be electrically operated, cost approximately four and one-half million dollars.





## DENVER & SALT LAKE RAILROAD



### BOULDER PARK AND TUNNEL SITE

elsewhere in the mountainous regions of this country. In the foreground is Tolland, 47 miles of a most charming short scenic trip, and has many thousands of delighted visitors each season. It will be six and four-tenths miles in length, eliminating twenty-three and one-half miles of track worth millions of dollars, and require three and one-half years to complete.



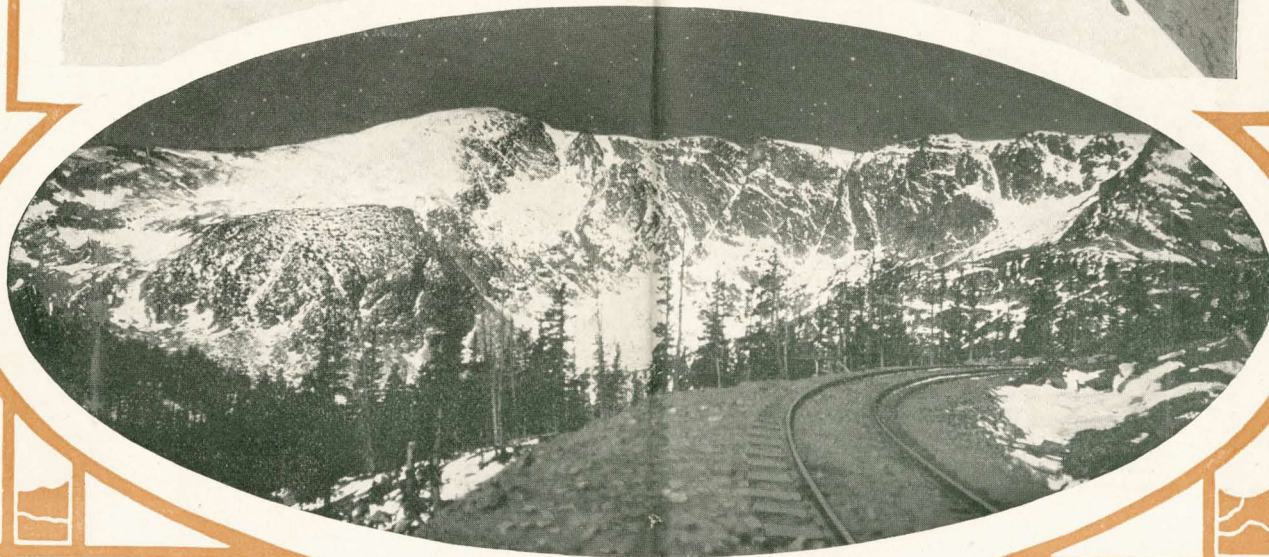


### DIXIE LAKE

Only one mile beyond YANKEE DOODLE, yet one hundred and sixty feet farther heavenward, is clear, charming little Dixie. Its name breathes of the sunny southland, and, nestling here in its western mountain home, it would, if it could, smile back at the many friendly southern eyes beaming upon its shining surface during each summertime. From the high, rocky perch above, the more daring summer girl waves triumphant greeting to her friends at the margin of the lovely lakelet below.



## DENVER & SALT LAKE RAILROAD

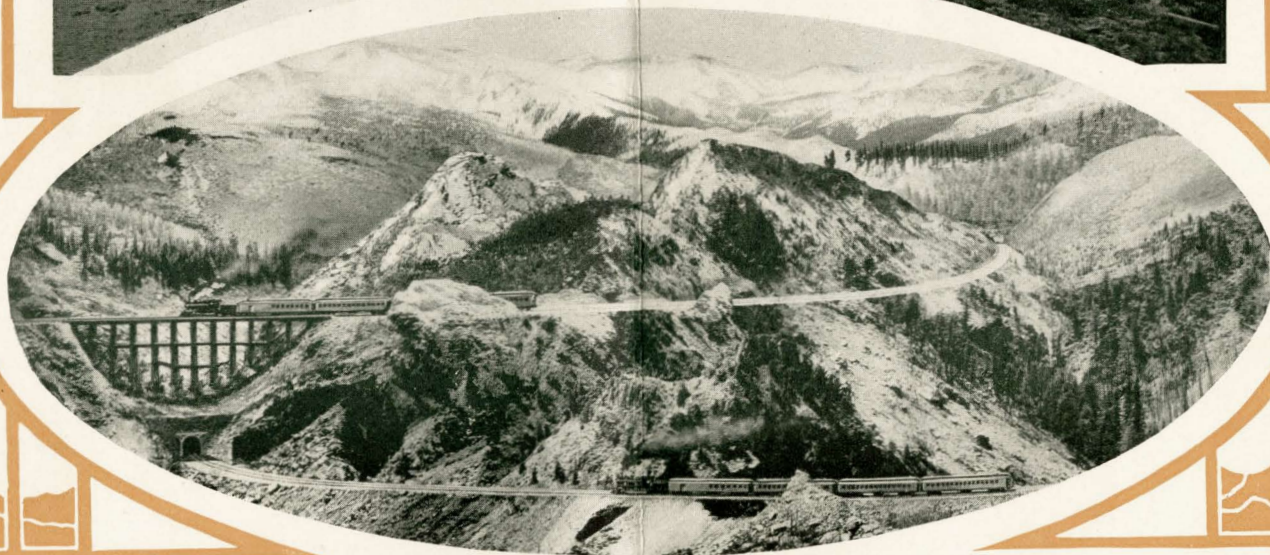
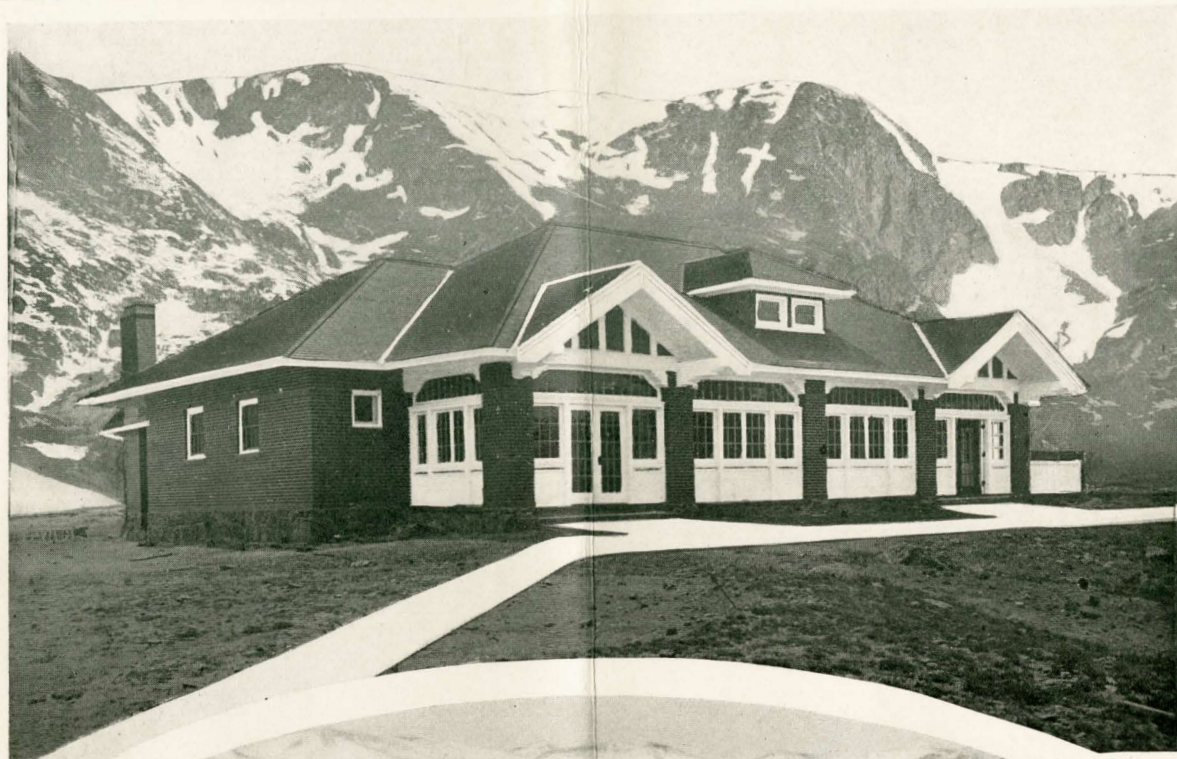


### THE TOP OF AN AVALANCHE NEAR CORONA

This vast body of perpetual snow, far above the realms of vegetation, at the very summit of the "Rockies" where these courageous vacation girls stood JULY 28, 1912, is world renowned as a Mecca for Kodak enthusiasts. LOWER PICTURE—A view of the CONTINENTAL DIVIDE by moonlight. A marvelous feat in photography achieved in a remarkable way in a most remarkable region.



## DENVER & SALT LAKE RAILROAD



### DINING STATION AT CORONA

Situated upon the very summit of the Main Range of the "Rockies," overlooking more than 200 miles of mountains. Fully equipped to serve meals to 150 persons at one time. LOWER PICTURE—The Moffat Road Loop. The location is virtually upon the very summit of the Continental Divide. There are other "loops" on other lines, but none like this. Below is shown the track alignment and a view of the situation and surroundings.



## DENVER & SALT LAKE RAILROAD



### VIEWS OF GRAND LAKE

GRAND LAKE is the largest and most beautiful body of water in Colorado. Its length is two and one-half, and width two miles. The surroundings of mountains and forests are simply ideal. Many beautiful cottages and several hotels are already there. Annual regattas are held, a glimpse of one being shown in the lower picture. Sir Thomas Lipton is taking an active interest in the regattas, indicating their high order. The time is not very far distant when Grand Lake will become one of the most popular, as by nature it is the most charming, summer resort in the United States.



## DENVER & SALT LAKE RAILROAD

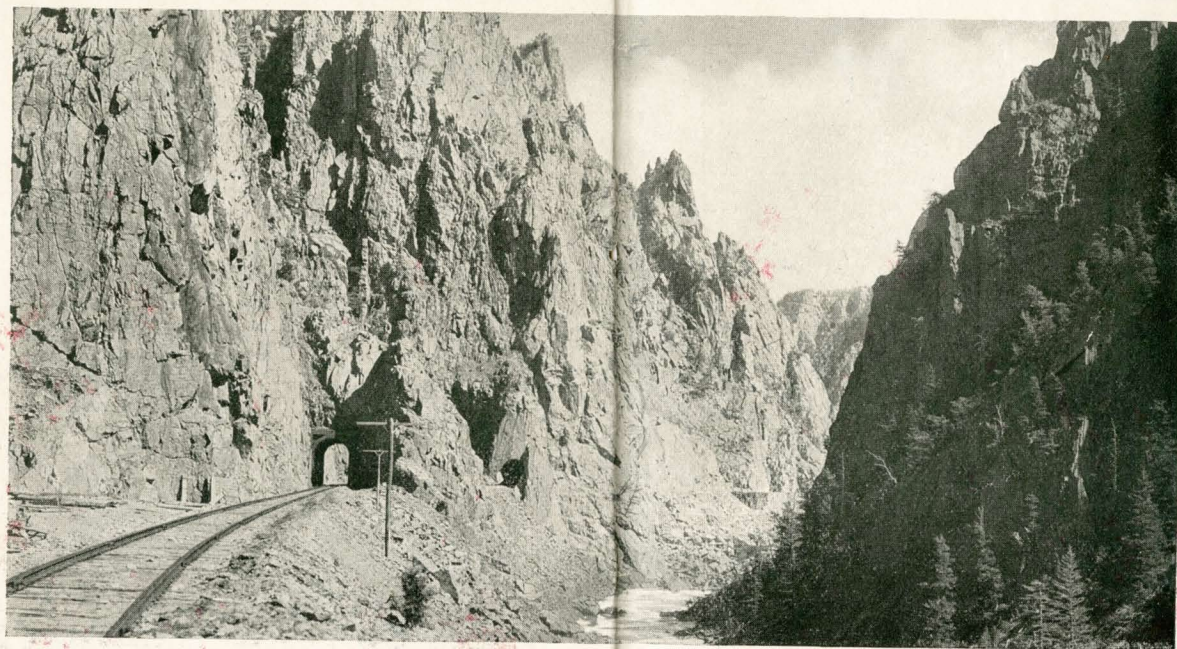
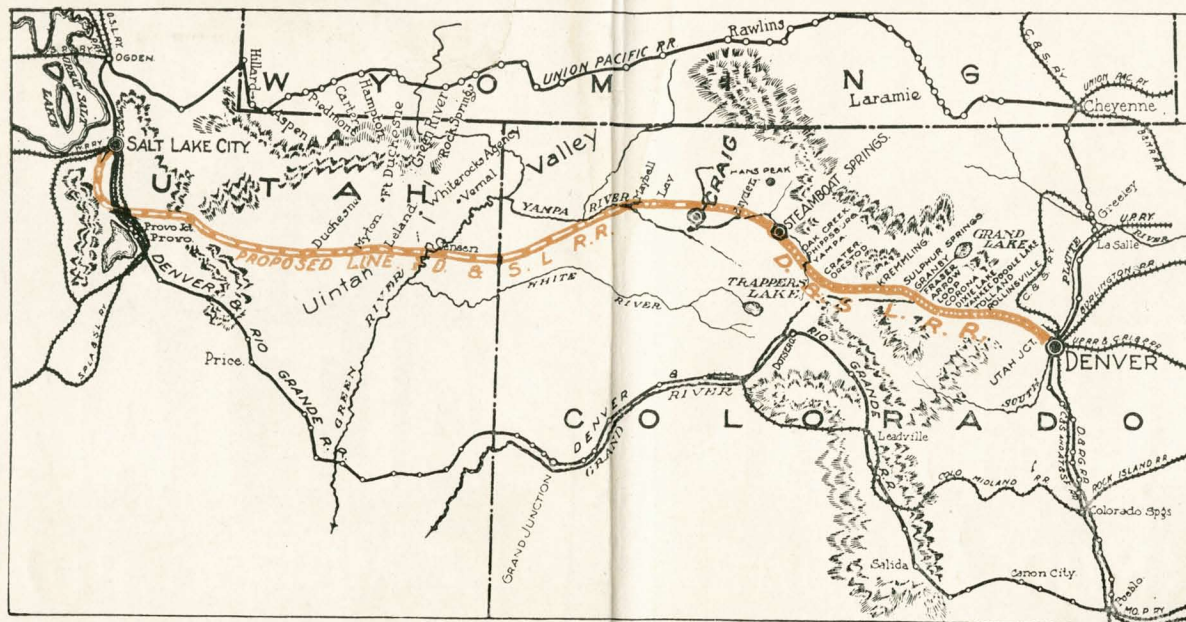


### GRAND CANON NEAR HOT SULPHUR SPRINGS

There are many canons traversed by railroads in the Rocky Mountains, but there is not one whose beautifully impressive grandeur equals this. It has everything — river, forest, gigantic rugged walls of rock; and that a standard-gauge railroad found its way through it is simply a glorious tribute to the amazing skill of the American engineer when at his best. Location just west from Hot Sulphur Springs.



## DENVER & SALT LAKE RAILROAD



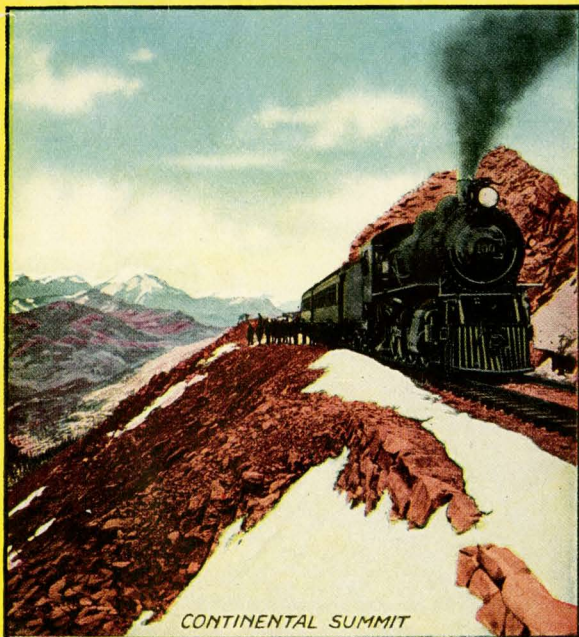
### GRAND CANON, GORE RANGE

In rugged grandeur this famous canon far surpasses any other in the world traversed by a standard-gauge railroad. The waters of the Grand River rush and tumble through, and its majestic walls of granite rise often to the dizzy height of sheer two thousand feet. Its wonderful lights and shadows, and the wild majesty of its constantly shifting scenic glories, distinguish it as one of the greatest among the many wonders of this remarkable railroad.



# DENVER AND SALT LAKE

"THE MOFFAT ROAD"

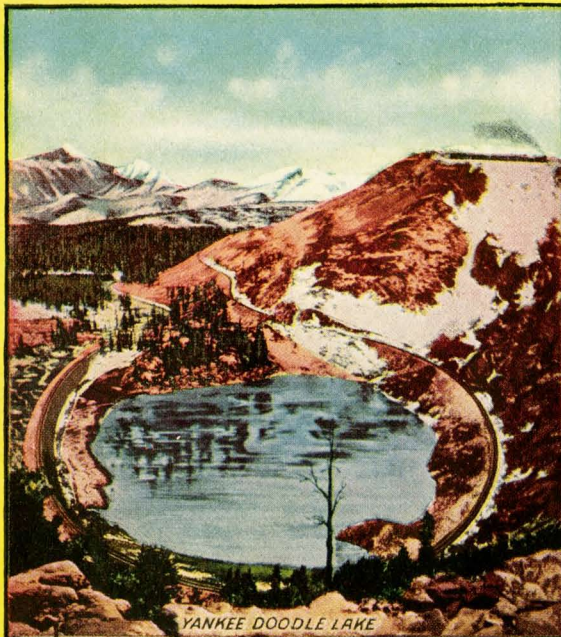


CONTINENTAL SUMMIT

ILLUSTRATING  
ITS MARVELOUS SCENERY  
AND  
UNEQUALLED ONE DAY TRIPS

# DENVER AND SALT LAKE

"THE MOFFAT ROAD"



YANKEE DOODLE LAKE

ILLUSTRATING  
ITS MARVELOUS SCENERY  
AND  
UNEQUALLED ONE DAY TRIPS