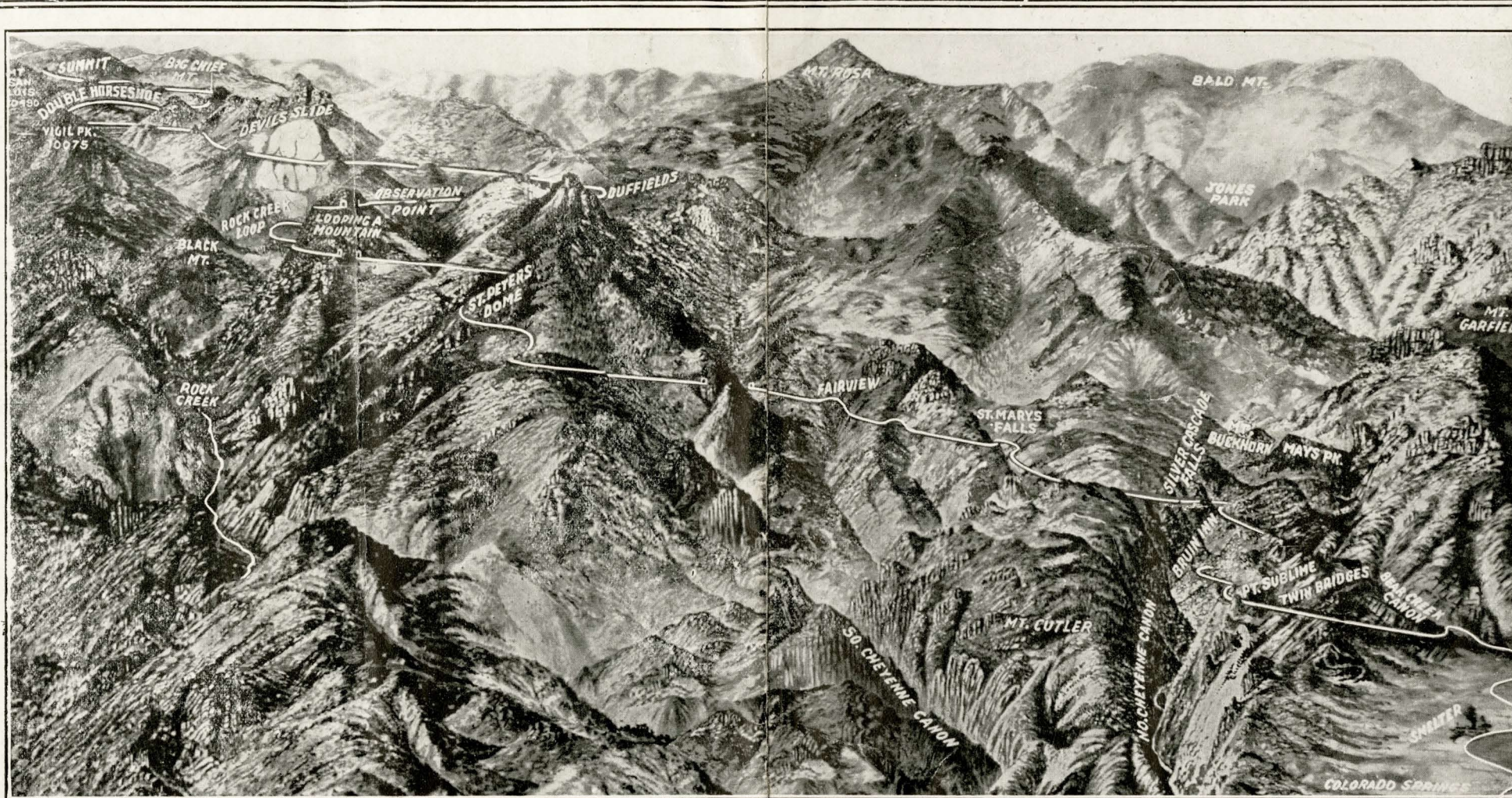


# The CRIPPLE CREEK SHORT LINE TRIP

IS THE MOST WONDERFUL  
SIGHT-SEEING TRIP IN AMERICA



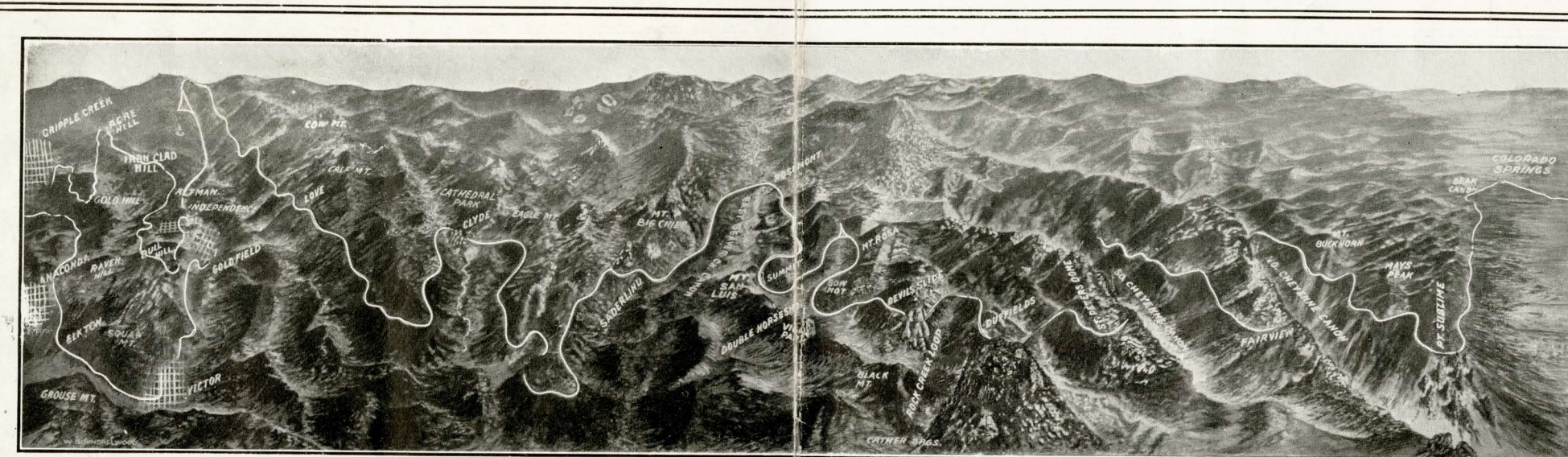
CONTOUR MAP—HALF-WAY TO CRIPPLE CREEK ON "CRIPPLE CREEK SHORT LINE"

THE wonderful scenery along the "Cripple Creek Short Line" has been a large factor in spreading the fame of Colorado Springs as a tourist center. Nowhere on the American continent can the tourist see anything to equal this wonderful trip, which has become famous throughout the world. Leaving Colorado Springs, the passenger gets all the wonder and thrill of aeronautics without being separated from terra firma, for at the city's very border terra firma itself climbs into the sky, and the Cripple Creek Train goes with it.

Julian Street, the author, in an article in the Nov. 21st, 1914, issue of "Collier's," describing this trip, says:  
"I have never seen such a railroad, either for steepness or for sinuosity. The train crawls slowly along ledges cut into the mountainsides, now burrowing through an obstruction, now creeping from one mountain to another; now slipping out upon a sky-high terrace commanding a view of hundreds of square miles of plains, now winding its way gingerly about a dizzy cliff which seems to leap out over chasms, into which one looks with a kind of admiring terror; now coming out upon the other side, and revealing the main chain of the Rockies 100 miles to the westward, glittering superbly with eternal ice and snow. It is an unbelievable railroad—the Cripple Creek Short Line. It travels 50 miles to make what, in a straight line, would be 18. If there is, on the entire system, 100 yards of track without a turn, I did not see the place. We were always turning; always turning upward. We would go into a tunnel and presently emerge at a point which seemed to be directly above the place where we had entered; and at times our windings, our doublings back, our writhings, were conducted in so limited an area that I began to fear our train would get tied in a knot and be unable to proceed."

And this is not all. At the end you come to the Cripple Creek District—the greatest gold-mining camp on earth, and "one of America's famous show places"—a rimmed cup in the mountain tops, with towering hills of gold in its center. Out of these hills has come wealth to overlay many a proud spot of earth with glitter of gold.

NOTE—You can go to Cripple Creek in your automobile, but that is not making the famous "Short Line" Trip, as the wagon road is miles and miles away from this wonderful railroad which, unlike other railroads and the wagon roads, does not follow the valleys or streams, but as the map shows, climbs up and over the mountains, accomplishing one of the greatest engineering feats in history.



BIRDS-EYE VIEW MAP OF THE "CRIPPLE CREEK SHORT LINE"

## What Travelers Say About the "CRIPPLE CREEK SHORT LINE TRIP"

Extracts from a Few of Many Unsolicited Testimonials

### From a Past Grand Exalted Ruler of the B. P. O. E. :

"I have taken great pleasure in recommending 'The Cripple Creek Trip' to my friends, and do not hesitate to say that it is one of the grandest scenic trips in America."

### From an Asst. Gen. Pass. Agt. of the M. Pac. Ry. :

"I had the pleasure of making this trip, and any tourist who fails to do likewise, in my opinion, makes the mistake of his life, as it is the most beautiful trip it has ever been my privilege to make."

### From a City Passenger Agent of the C., B. & Q. R. R. :

"I have traveled over the Short Line to Cripple Creek, and, in my estimation, it is the grandest trip in the world—or, at least, in the United States—and we invariably tell our passengers to make it."

Low-Rate Excursion Tickets on Sale Daily. Stop-over privileges are allowed at Colorado Springs by all roads on through tickets.

SPENCER PENROSE  
PRESIDENT

J. J. COGAN  
GEN'L MGR.

F. C. MATTHEWS  
G. F. & P. A., C. C. & C. S. R. R., COLORADO SPRINGS, COLO.

P. S. There is more wonderful scenery, in greater variety and easier of access, in the Colorado Springs-Manitou Region than in any other equal area on the American Continent.

### From a Commander of a Knights Templar Lodge:

"However, I will say that those who will attend will miss the scenic route of the world if they do not include your line in their itinerary, and I will so advise them."

### From a descriptive sketch by a pastor of M. E. Church:

"It is sometimes difficult to tell whether some colossal aeroplane has caught us and is rushing us forward in a race with the clouds; anyway, we must abandon all attempts at description and be content simply to look upon a thousand indescribables."

### Governor Haines of Maine Said:

"I have been all over this country and Europe, but in no place have I seen anything to equal that wonderful trip over the Cripple Creek Short Line."

## SOME OF THE MANY VIEWS ON THE CRIPPLE CREEK SHORT LINE

THE scenic points named below are only a few of the many grand scenes. Mountain scenery such as one can behold nowhere else, lights and shadows that hold the contrasts of life and death, colors that seem meant for some celestial sphere, come and go in panoramas that change so rapidly, are so vast, so gorgeous and, withal, so overpowering that words fail utterly and the silence of awe alone is left to express one's sense of a world too great for description.

Miles from Colo. Springs	Elevation		Miles from Colo. Springs	Elevation	
	5950	Colorado Springs. .	18	9000	Cather Springs.
		Passing the mills that get the gold out of the Cripple Creek ore.			Rock Creek Loop.
		Looking down on Colorado City, the first capital of the State.			Looping a mountain.
		Garden of the Gods in the distance.			Observation Point, a wonderful view down over the tops of the mountains to Colorado Springs—five tracks can be seen below us.
		Bear Creek Canon.	20	9304	Duffields, the last view of Colorado Springs.
		Hugging the rocky side of the mountain, the plains stretching below.			Looking down on Rock Creek Loop.
		Twin Bridges.			Devil's Slide.
		Looking down on Broadmoor.			Double Horseshoe.
8	7455	Point Sublime (the original.) This view has become so well known that other scenic attractions have adopted the name for views on their lines. It is here, as the gaze rests upon this scene of grandeur, that the power of speech begins to totter upon its throne.	23	9907	Summit.
		Skirting the rim of North Cheyenne Canon.	24	9821	Rosemont.
		Bruin Inn.	26	9956	Saerlind—three tracks below us.
		Crossing the head of North Cheyenne Canon.			Clyde Loop.
		Silver Cascade Falls.			Cathedral Park.
		Along the mountainside, looking down on the track you have passed over.	32	9428	Clyde.
12	7926	Fairview, a magnificent view out on the plains thru the entrance to the Canon.			Beaver Creek.
		Head of South Cheyenne Canon.	41	10080	Cameron—where you enter the mining district. For the next ten miles you wind in and out among the world's largest mines—from here on there is so much to see that space does not permit us to mention the mines and many grand and interesting views.
15	8324	Looking below you see the tracks you came over; looking above you see three tracks that you will go over.			Victor Pass.
		St. Peter's Dome.	43	10239	Vindicator Jet.
		Tunnel No. 7. Immediately above this is Tunnel 8, but the road traverses a distance of two miles before you get back to it.	44	9800	Goldfield.
					Goldfield Loop.
			46	9775	Victor.
17	8715				Eclipse.
			48	9692	Elkton.
			50	9516	Anaconda.
			52	9522	Cripple Creek.

## "THE TRIP THAT BANKRUPTS THE ENGLISH LANGUAGE"



MAP OF CRIPPLE CREEK DISTRICT





ON THE ROAD TO CRIPPLE CREEK  
CRIPPLE CREEK SHORT LINE

SCENES ON THE CRIPPLE CREEK SHORT LINE



OBSERVATION POINT—CRIPPLE CREEK SHORT LINE



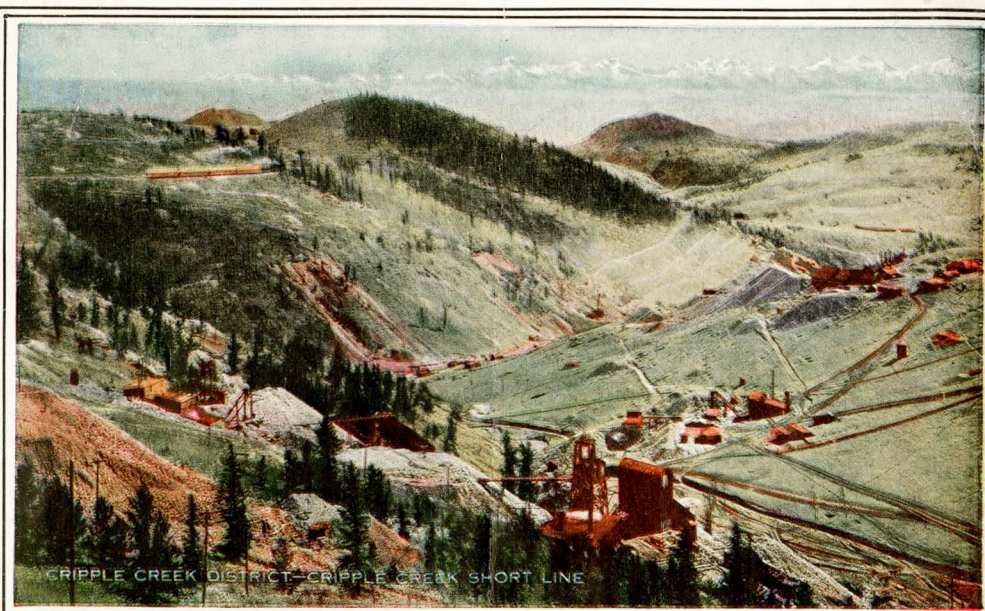
CHEYENNE MOUNTAIN FROM DUFFIELD—CRIPPLE CREEK SHORT LINE



INTO THE HEART OF THE ROCKIES—CRIPPLE CREEK SHORT LINE



MOUNTAIN TOP TO MOUNTAIN TOP ON CRIPPLE CREEK SHORT LINE



CRIPPLE CREEK DISTRICT—CRIPPLE CREEK SHORT LINE

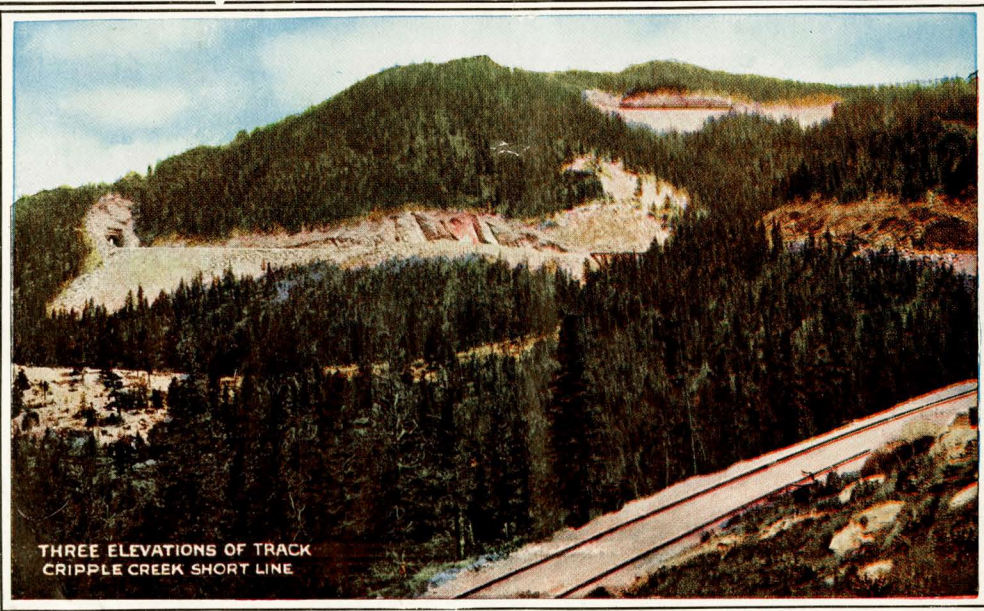
SCENES ON THE CRIPPLE CREEK SHORT LINE



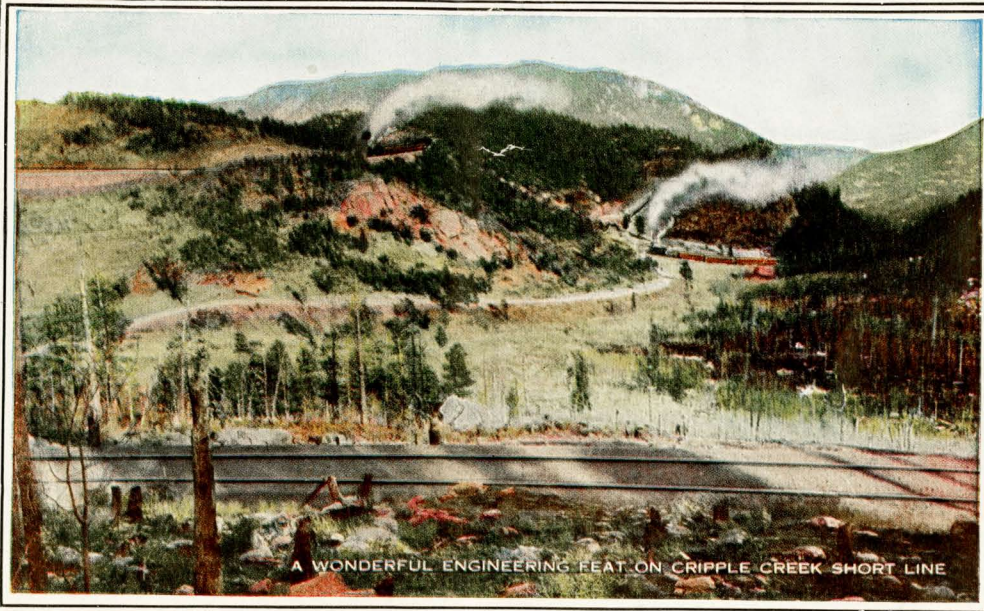
CLIMBING THE BACKBONE OF THE CONTINENT  
CRIPPLE CREEK SHORT LINE



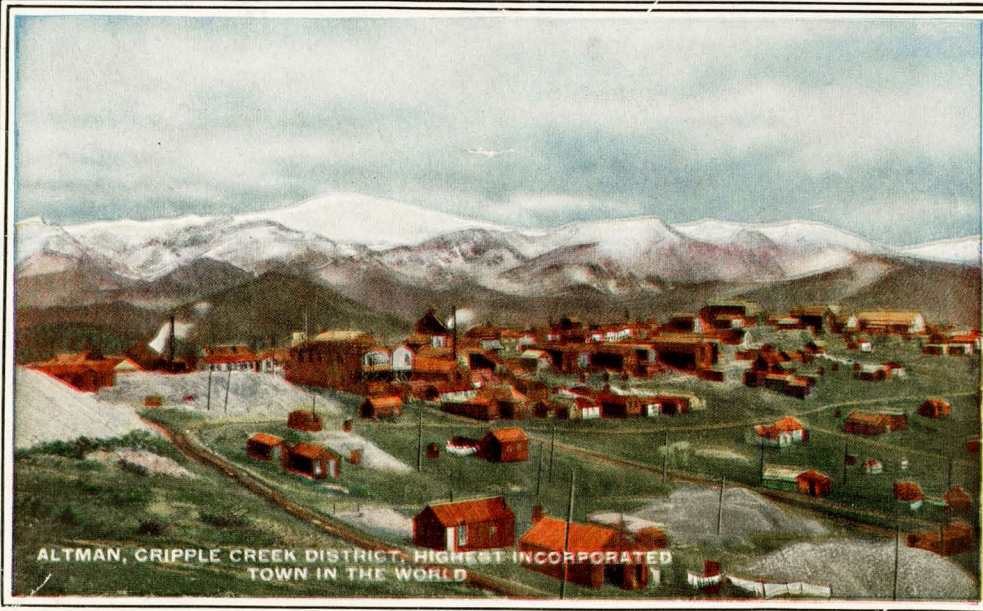
ST. PETER'S DOME—THE CRIPPLE CREEK TRIP



THREE ELEVATIONS OF TRACK  
CRIPPLE CREEK SHORT LINE



A WONDERFUL ENGINEERING FEAT ON CRIPPLE CREEK SHORT LINE



ALTMAN, CRIPPLE CREEK DISTRICT, HIGHEST INCORPORATED  
TOWN IN THE WORLD



MINING SCENE  
CRIPPLE CREEK SHORT LINE