

## LOW COST "FAMILY PLAN" FARES

Northern Pacific can save you money with low-cost "Family Plan" fares. On ONE WAY tickets, head of family pays full one-way fare; other parent and children 12 through 21 each pay half fare; children 5 through 11 each pay one-quarter fare. On ROUND TRIP, head of family pays regular round trip fare; other parent and children 12 through 21 each pay one-way fare for round trip; children 5 through 11 each pay half one-way fare for round trip. Children under 5 years free. Start journey on Mondays, Tuesdays, Wednesdays or Thursdays of any week. Return any day. (If trip is entirely on the Northern Pacific, including SP&S, journey may start any day in the week.) Ask for full information.

## RAIL-AUTO SERVICE

Leave the family car at home and go in comfort and safety by train. Rent a "Drive Yourself" car at destination. Cost is reasonable and all details can be arranged by your local agent before you leave home. There are no detours or crowded highways when you ride the

## Vista-Dome NORTH COAST LIMITED

For free literature and full travel information, fill out and mail the coupon below to:

Leonard Holmstrom,  
Asst. Passenger Traffic Manager  
NORTHERN PACIFIC RAILWAY  
St. Paul, Minn. 55101

I am considering a Western trip by train to

(Show destination in which you are interested)

( ) INDEPENDENT TRIP  
( ) ESCORTED TOUR (Indicate which)

Name \_\_\_\_\_

Address \_\_\_\_\_

City \_\_\_\_\_ Zone \_\_\_\_\_ State \_\_\_\_\_

Phone \_\_\_\_\_

# Western VACATIONS



YELLOWSTONE

TETONS

DUDE RANCHES

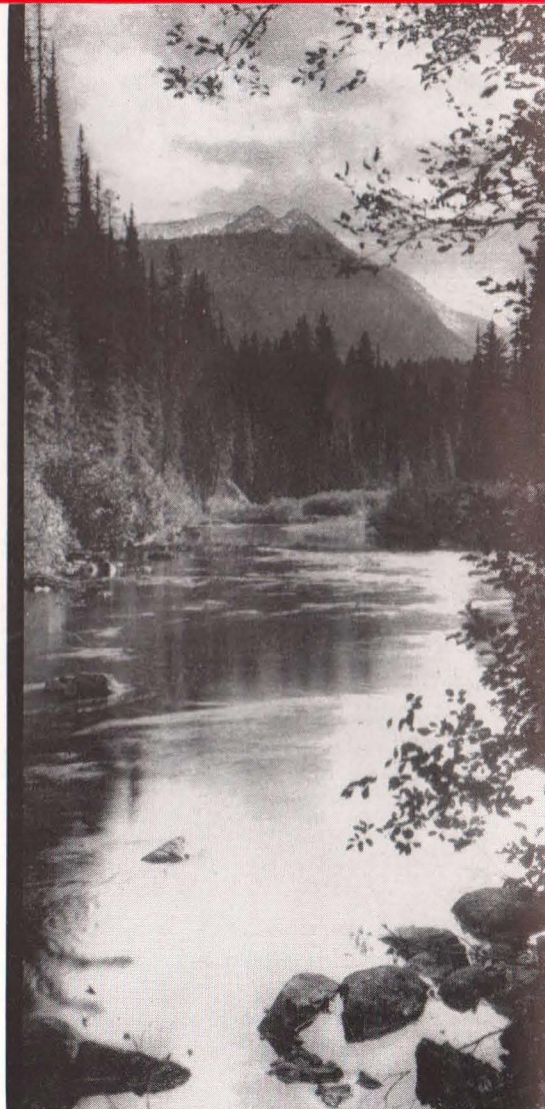
PACIFIC  
NORTHWEST

CANADIAN  
ROCKIES

CALIFORNIA

ALASKA

HAWAII



Route of the Vista-Dome

NORTH COAST LIMITED

## NOW, MORE THAN EVER, YOU CAN ENJOY THE SCENIC ROUTE ACROSS AMERICA

*From The Vista-Domes on the North Coast Limited*

Yes, "the sky's the limit" when you travel through the Northwest the Vista-Dome North Coast Limited way! There's always a Vista-Dome just a few steps away—and yours to enjoy at no extra cost.

You'll see the broad panorama of the Northwest as you've never seen it before—rivers, farms, ranches, mountains, forests and lakes—they're all about you as you relax comfortably in these beautifully-appointed Vista-Dome cars.

You'll like everything about this splendid streamliner—the comfort and convenience of its all-room sleeping cars or de luxe coaches with leg rests for maximum in travel comfort at lowest cost. An all-room *Slumbercoach* for economy-minded travelers, provides private sleeping rooms at low cost on a coach ticket.



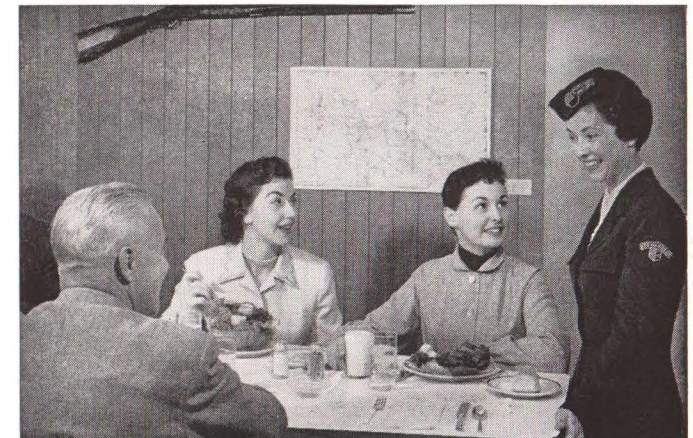
Rivers, Lakes, Mountains and Forests—yours to enjoy from your Vista-Dome "Grandstand" seats

And, you'll like the delicious meals in sparkling luxury diners, where you'll dine sumptuously in a dignified, quiet atmosphere.

The unique Lewis and Clark Traveller's Rest Buffet-Lounge car, decorated in authentic Lewis and Clark theme, was named for a favorite Montana camp site of the famous explorers. It is one of the most fascinating cars you can imagine. The lounge section seats 30 in comfortable chairs and sofas. The buffet seats 14, serving select and a la carte meals and snacks at popular prices, continuously from 7:00 am.

A friendly Stewardess-nurse welcomes you aboard, makes you comfortable for a most enjoyable, swift and smooth journey—just one of the many *extras* on the

**Vista-Dome NORTH COAST LIMITED.**



The distinctive Traveller's Rest car is popular for eating (above) or for lounging and recreation (below)

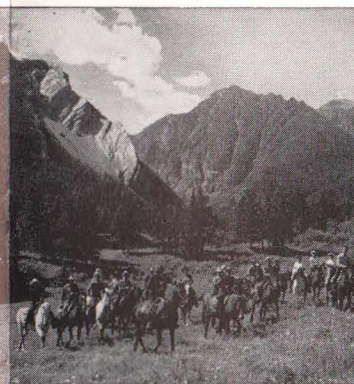




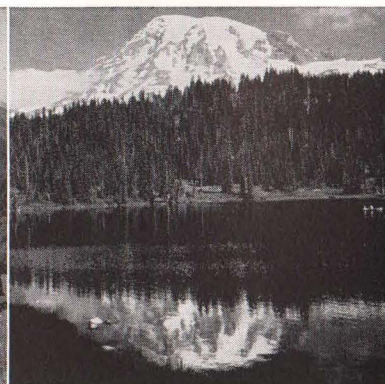
*Old Faithful Geyser,  
Yellowstone Park*



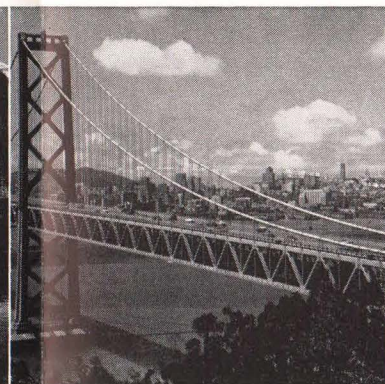
*The magnificent Teton Peaks,  
an easy sidetrip from Yellowstone*



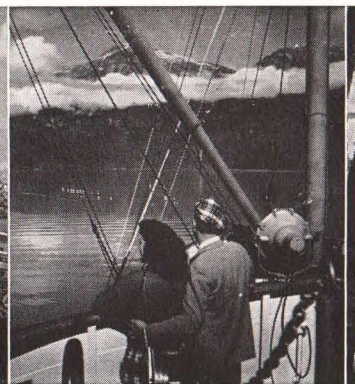
*Scenic grandeur and a new way  
of life on a dude ranch vacation*



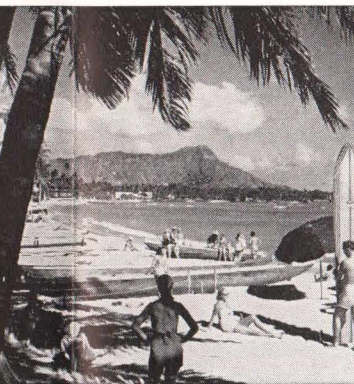
*Beautiful Mt. Rainier, quickly  
reached from Seattle or Tacoma*



*Oakland Bay bridge and the  
skyline of San Francisco*



*Alaska's Inside Passage is  
a scenic delight*



*Diamond Head and famous  
Waikiki Beach, Honolulu*



*The gorgeous Canadian Rockies  
and famed Chateau Lake Louise*

## THIS IS NORTHWEST TRAVEL YEAR . . . INCLUDE YELLOWSTONE AND DUDE RANCHES — THEY'RE RIGHT ON THE WAY



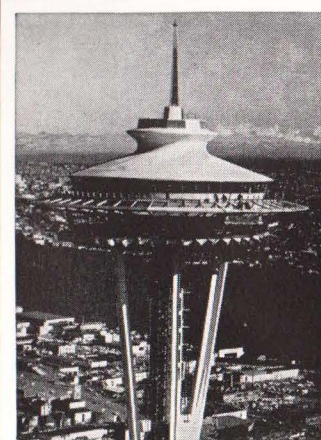
*Yellowstone is America's greatest wild animal sanctuary  
and its bears are nearly as famous as its geysers*

### DUDE RANCHES—

offer a distinctly American vacation where you can get clear away from conventional city life and enjoy the thrills and color of the Old West. You can be as active as you wish, or you may relax completely and be as lazy as you like—there's no forced existence on a dude ranch. But there are worlds of fresh air and the clearest, brightest skies you've ever seen. And, incidentally, you'll associate with some of America's grandest scenery. NP knows dude ranches and ranchers and will be glad to help you select the right one. Ask for a copy of our "Ranch Vacations" picture folder.

### PACIFIC NORTHWEST-CALIFORNIA

What a menu for vacationists—Rainier National Park . . . Timberline Lodge . . . Columbia River Highway . . . Mount Baker . . . Grand Coulee Dam . . . Pacific Coast Beaches



### THE SPACE NEEDLE

is Seattle's new trademark created by its great world fair. It will remain a permanent and striking feature on the city's already imposing skyline.

When you visit Seattle, plan to "dine in the sky" in the revolving restaurant a-top the Space Needle. It will be an unforgettable experience to associate with your visit to America's Evergreen Playground, The Pacific Northwest.

and many other points of interest besides the attractive cities of Seattle, Portland, Tacoma, Spokane, Victoria and Vancouver, B. C. Diverse routing permits return through the Canadian Rockies to visit Jasper Park or Lake Louise and Banff. Or, your vacation may easily be extended to California with added miles of scenic grandeur on the way.

### ALASKA, Land of the Midnight Sun

sometimes called "America's Last Frontier," is literally that. Young, dynamic, rugged and growing, Alaska offers opportunity and a promising future. A land of contrasts, it is also one of great beauty and scenic grandeur. Inside Passage cruises reveal unsurpassed vistas of mountains, forests and sea from the comfort of a steamer deck chair. Quaint villages and thriving modern cities vie for the interest of visitors. Ask for information and sailing dates of cruises.

### HAWAII, Paradise of the Pacific

Our newest state, Hawaii, has become an increasingly popular vacation destination. The very name, Hawaii, suggests the romance of the South Seas and the delights of luxuriating in a mild, equitable climate. Honolulu is a leisurely 5-day cruise by luxurious steamer, or a fast 8-hour flight by air from the mainland. Hawaii may be easily included on a circle rail tour through the Pacific Northwest, traveling west to Seattle on the *Vista-Dome North Coast Limited*, thence by airliner. Return may be made through California and eastbound trip arranged through Salt Lake City and Denver, via Grand Canyon or by other routes to suit individual desires. Ask for details.



*Trim and sleek, the Vista-Dome North Coast Limited  
glides into a beautiful Montana sunset*



*The steward welcomes you to sumptuous dining  
on the Vista-Dome North Coast Limited*

### YELLOWSTONE AND TETON PARKS—

Yellowstone, largest and most spectacular of our national parks, is in full operation every summer from the middle of June until after Labor Day. With new facilities now available, NP travelers are finding an enjoyable sidetrip from Yellowstone into Teton National Park to enjoy the magnificent Grand Teton mountains. Yellowstone-Teton Parks may be planned as a vacation destination, or may conveniently be included on a transcontinental trip. Any of the three gateways to Yellowstone, Gardiner, Cody or the spectacular Red Lodge entrance, may be used by NP travelers—or a combination of two, entering by one, leaving by another. One or two day detours may also be made into Yellowstone preceding and following the regular park season. Ask for tour information.