

*All aboard for...*

*your*

# **NORTHWEST ADVENTURE**



The train that makes  
travel *fun* again...

The Vista-Dome

*NORTH COAST LIMITED*





## Sit down to wonderful western meals in the **DINING CAR**

Here's where you'll experience Northern Pacific's famed hospitality at its best. Courteous, well-trained waiters serve superb food—fresh-baked breads and pastries, the Northwest's blue-ribbon fruit and vegetables, fish and meat—and of course the famous “Great Big Baked Potato.”

*A courteous steward shows you to your seat and takes your order in this handsome new dining car. Left—the chef puts a tray of Big Baking Potatoes in the oven.*





# All aboard for your **NORTHWEST ADVENTURE!**

Here's a picture preview of where you'll go, what you'll see and how you'll travel on Northern Pacific's *Vista-Dome North Coast Limited* . . . .

You'll be welcomed aboard and made to feel right at home when your Stewardess-Nurse greets you with a smile. She cheerfully answers your questions and looks after your comfort, does everything possible to help make your trip a most enjoyable one.

Her experience and training as a registered nurse is reassuring, particularly to elderly people and to mothers traveling with small children.

We believe you'll agree that the *Vista-Dome North Coast Limited* is the train that makes travel *fun* again!



**A friendly Stewardess-Nurse** directs attention to points of interest along the route. The *Vista-Dome North Coast Limited* is the only train in the Northwest with Stewardess-Nurse service.

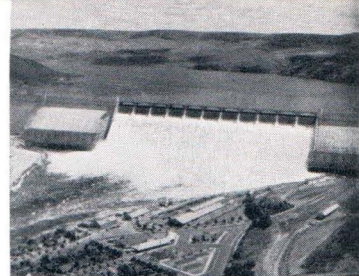
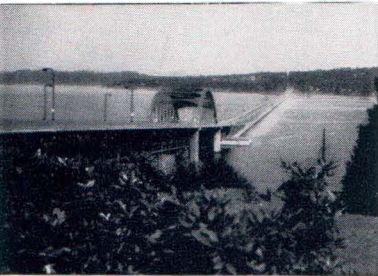
**Grant Park and skyscrapers** form an attractive border along Lake Michigan in Chicago—eastern terminus of the *Vista-Dome North Coast Limited*.



**Twin Cities** of St. Paul and Minneapolis—gateway cities to Minnesota's famed 10,000 Lakes Region—form an industrial and residential metropolitan area of more than a million population. St. Paul is Minnesota's capital; Minneapolis (bottom), "City of Lakes," is a noted flour milling center.





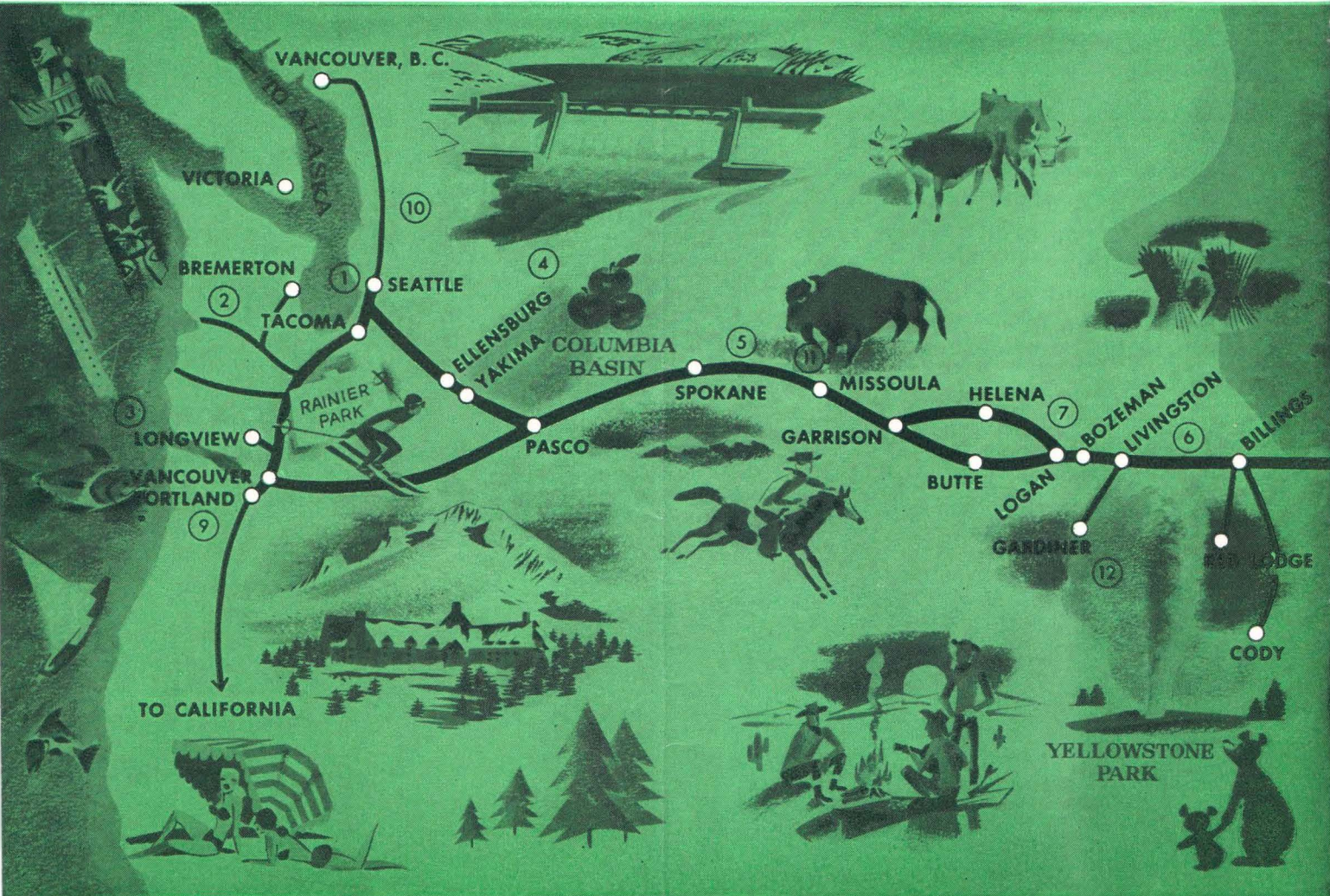


1. Seattle's famed Floating Bridge spans Lake Washington.

2. Olympic National Park is easily reached from Puget Sound cities.

3. The fighting salmon is king of the Northwest game fish.

4. Giant Grand Coulee Dam channels water to million-acre Columbia Basin.

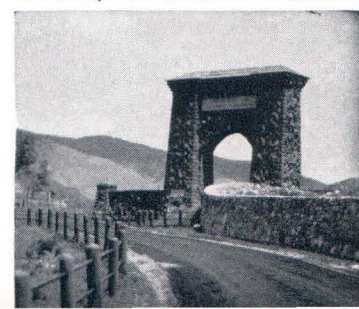


9. Portland Rose Festival is annual event in the "city of roses."

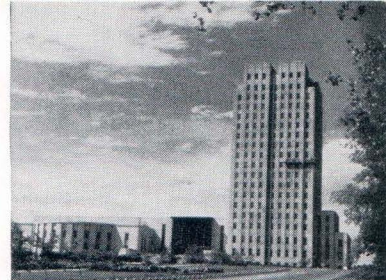
10. Logging is still a prime industry in towering Northwest forests.

11. Buffalo still roam on National Bison Range west of Missoula, Mont.

12. Gardiner Arch, one of three Northern Pacific entrances to Yellowstone.





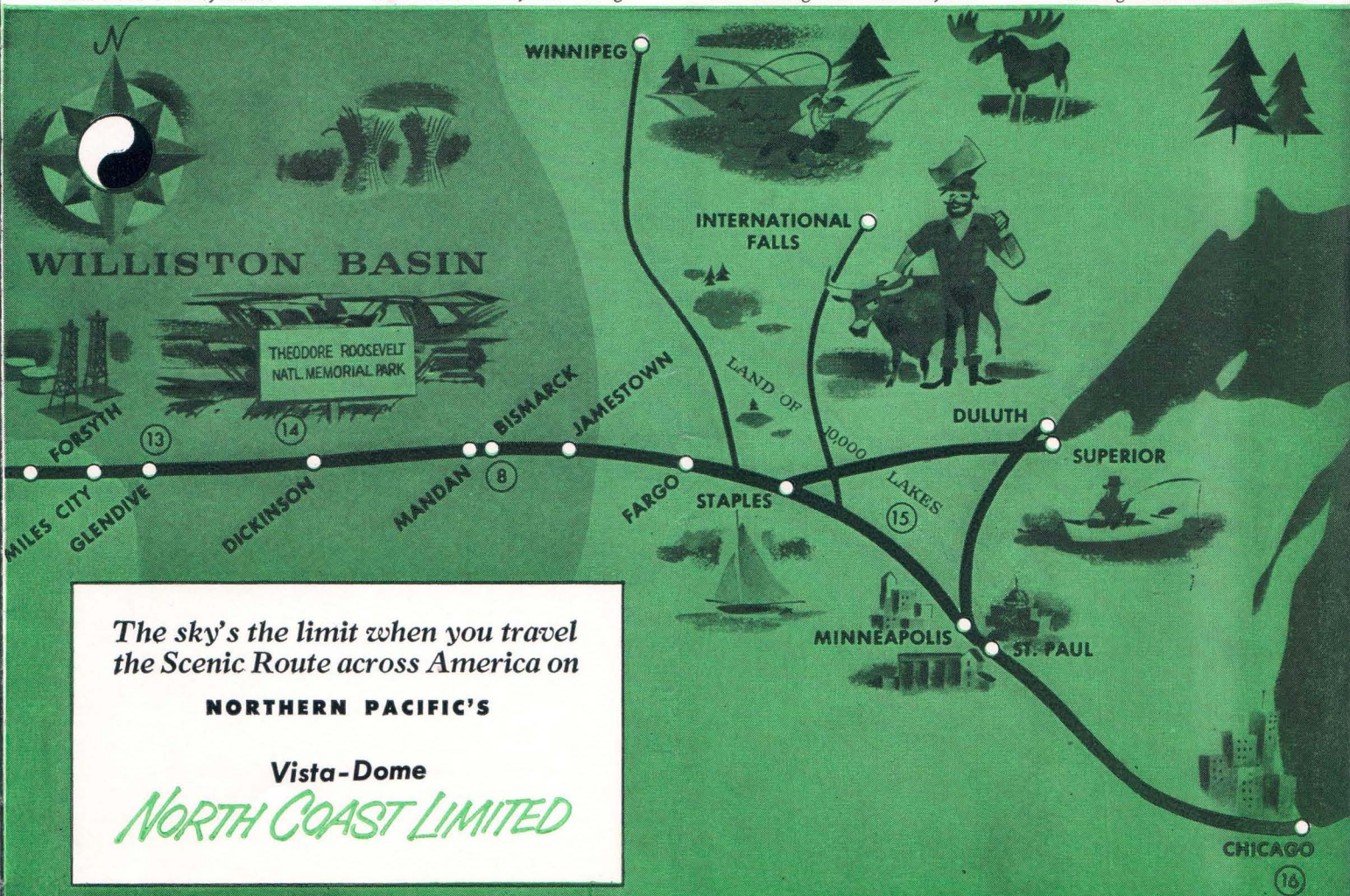


5. Lair of famed Kamloops trout is Lake Pend Oreille, Idaho.

6. Western rodeos provide rough-and-tumble thrills, trick riding.

7. Many western dude ranches are real working cattle ranches, too.

8. North Dakota's modern capitol building looms on the horizon.



The sky's the limit when you travel  
the Scenic Route across America on

**NORTHERN PACIFIC'S**

**Vista-Dome**

***NORTH COAST LIMITED***

13. Williston Basin of Montana and the Dakotas is a major oil field.

14. Strange shapes, weird colors mark Bad Lands, visible from the train.

15. Water sports attract many visitors to the "Land of 10,000 Lakes."

16. Hub of America's railroads is Chicago, metropolis of the midwest.







## VISTA-DOMES

put the "see" in scenery!

You'll see the Northwest as you've never seen it before—when you step into a North Coast Limited Vista-Dome. Stretching out ahead and all around you there's a broad, breathtaking panorama—mile after mile of mountains and forests, rivers and plains—the magnificent Scenic Route Across America.

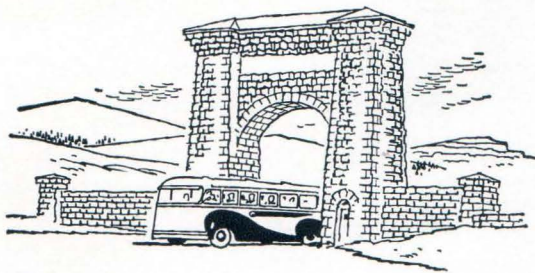
Dome seats are open to everyone—at no extra cost.

By day you watch rugged, snow-capped peaks soaring high above you . . . white water tumbling through evergreen foliage far below. By night you marvel at millions of stars, at the skyline sharp-etched against silvery moonlight.

*Vista-Domes for both coach and sleeping car passengers make sightseeing convenient for everyone. No reservations are needed for dome seats. At the left is the Vista-Dome North Coast Limited in the Montana Rockies.*







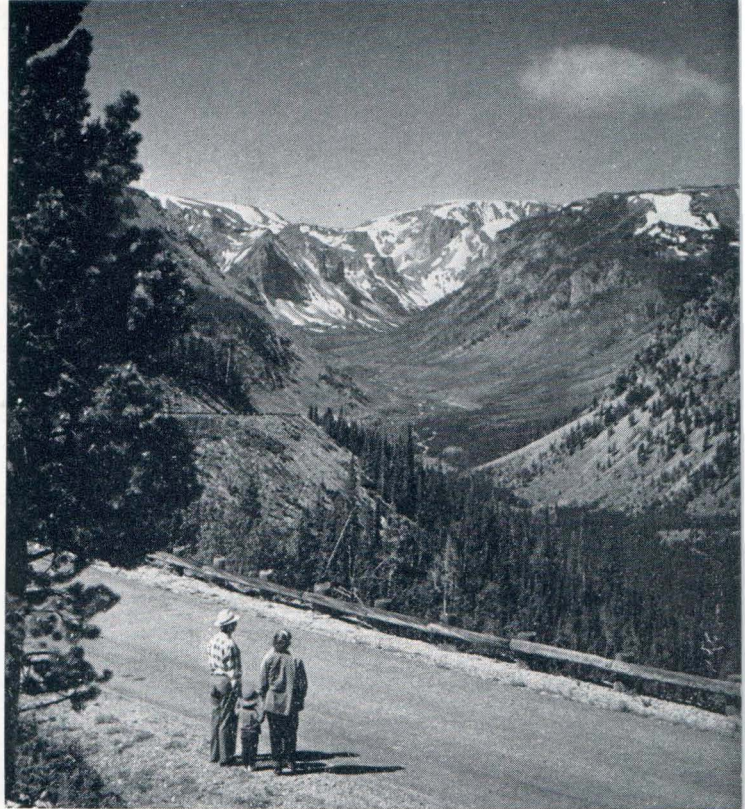
You'll find a western  
wonderland at

# YELLOWSTONE

## NATIONAL PARK

You'll marvel at its frothing geysers, its bubbling pot-holes and pools. You'll be inspired by the sheer scenic beauty of a wide-open wilderness still unspoiled. You'll see for yourself why our oldest, largest national park is one of the nation's most popular playgrounds. In spring and fall, before and after the regular park season, special one-day tours are available to transcontinental travelers.

**Old Faithful**, best known of Yellowstone's geysers, erupts every hour, sending its plume of steam and hot water 150 feet into the sky.



**Mountain peaks** and mighty gorges—you look down on both from the spectacular Red Lodge High Road, en route to Yellowstone. This road crosses the crest of the Beartooth Rockies at 11,000 feet.

**Grand Canyon** and Great Falls of the Yellowstone River are a thrilling climax to the Park tour.







**Good company, good drinks and comfortable surroundings make the Traveller's Rest Lounge a favorite gathering place.**



**Buffet section features famous NP food at modest prices. Meals are served continuously during the day.**



## "TRAVELLER'S REST" and Pullman Observation-Lounge

Traveller's Rest was the name which the illustrious explorers, Captains Meriwether Lewis and William Clark, gave a favorite camp site in western Montana. You'll find this striking new Buffet-Lounge, decorated in an authentic Lewis and Clark theme by Raymond Loewy Associates, one of the most fascinating railroad cars you've ever experienced.

Original murals, copies of authentic letters, maps and mementos tell the colorful story of the historic expedition across the Northwest a century and a half ago—along the very route you travel on the Northern Pacific.

A luxurious observation-lounge, exclusively for Pullman passengers, is on the rear of the train. There are seats for 26, tables for cards, writing desk, magazines, radio and beverage service. A section of the lounge is shown at the left.





*The majestic peaks of the rugged Teton Range form a spectacular backdrop for this view from across the waters of Jackson Lake.*

# GRAND TETON

## NATIONAL PARK

This area, famed for the rugged beauty of the lofty Teton Peaks, also embraces a part of the historic Jackson Hole of Western Wyoming. In the early days of the west, this was a favorite rendezvous for fur trappers, traders and mountain men. Grand Teton Park adjoins Yellowstone Park on the south and may be easily included as an extra sightseeing bonus of one or more days, with your Northern Pacific Yellowstone tour. The Snake river and lovely lakes add to the scenic grandeur of the region.

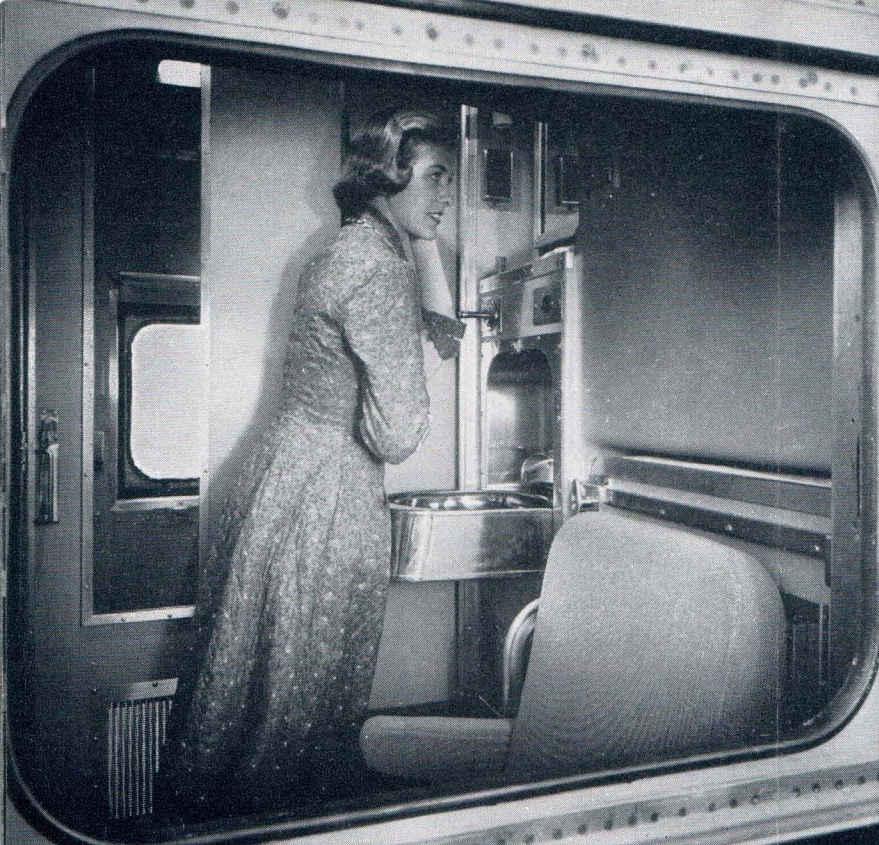
### INDEPENDENT AND ESCORTED TOURS

In cooperation with several first class travel bureaus, Northern Pacific participates in many excellent escorted tours to all parts of the west, to Hawaii and Alaska. We have also arranged some fine independent tours with all reservations for hotels and sightseeing made in advance. Consult your nearest NP Travel Office (see list P. 18) or write G. W. Rodine, Northern Pacific Railway, St. Paul 1, Minn.

*Windows of the lounge of luxurious new Jackson Lake Lodge frame views of the mighty Teton. The Lodge provides splendid accommodations for visitors in Grand Teton Park.*







**Single Slumbercoach rooms** are designed for one adult or mother and baby. An unique Slumbercrib is available for baby and is easily accessible, suspended above or below the bed.



**Double Slumbercoach rooms** will accommodate two adults. It has two full length beds, upper and lower, and two facing seats for daytime use.



**De luxe Day-Nite coaches** have leg rests and adjustable seats. Extra room between seats lets you lie back almost at full length. All seats are reserved.

## SLUMBERCOACHES

### AND RECLINING CHAIR COACHES

Newest addition to the superb equipment on the North Coast Limited is a line of famous *Slumbercoaches*, sleek, modern, stainless steel, all-room sleeping cars designed to provide private room facilities for economy-minded travelers at low cost in addition to a *coach* ticket.

*Slumbercoach* accommodates 40 passengers in 24 single and 8 double rooms, all having full length beds, private toilets, wash basins, full length mirrors, luggage space, individual light and heat controls. Toilet facilities are clear of beds at all times.

**Coast-to-coast-by-Slumbercoach**—Now passengers may travel all the way by *Slumbercoach* between the Atlantic coast and Puget Sound. New York Central from Boston or New York and Baltimore & Ohio from Washington, D. C. make connections at Chicago with Northern Pacific's *Vista-Dome* North Coast Limited, *the only train in the Northwest with Slumbercoach service.*



# Pick your own brand of fun on a **DUDE RANCH**



Want to loaf and take it easy? You can spend lazy hours under the clearest sky and brightest sun you've ever seen. Want to see the country? Climb aboard a sure-footed, well-trained western horse and ride to your heart's content, over open plains or along lofty skyline mountain trails. You can revel in unspoiled natural beauty changed very little from the virgin wilderness viewed by the first pioneers. Want to fish? Some of America's

great trout streams and quiet, secluded lakes are near at hand with hungry trout ready to give you a tussle. Want to join in roundups and branding? These activities are common to most ranches and are a colorful part of the old west.

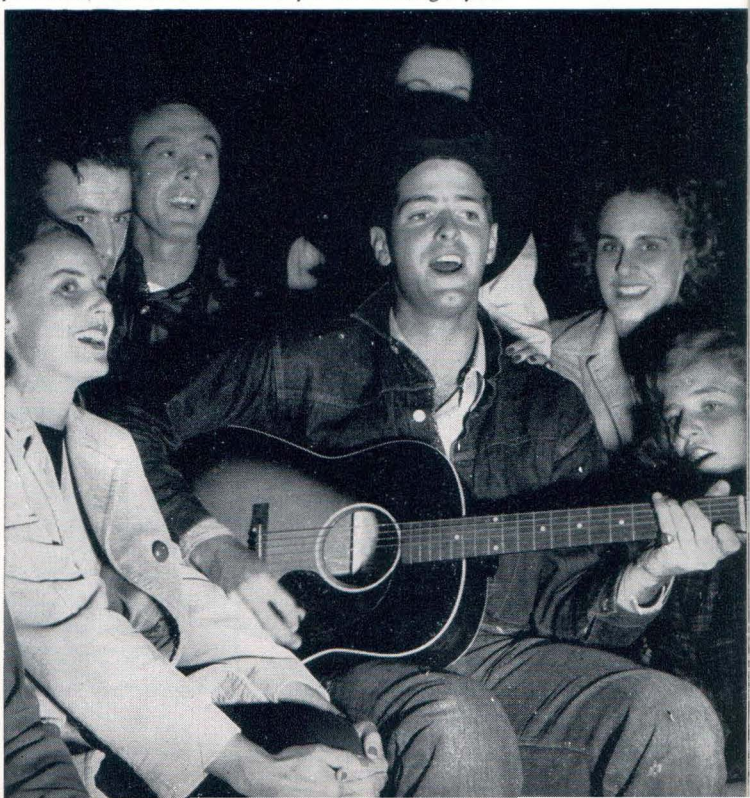
There are many fine dude ranches along the Northern Pacific. We know the owners and the various types of ranches and will be glad to help you choose one to suit your own taste.

**Headin' for the tall timber,** across lush mountain meadows to lofty skyline trails. Horseback riding is the No. 1 activity on a western ranch.

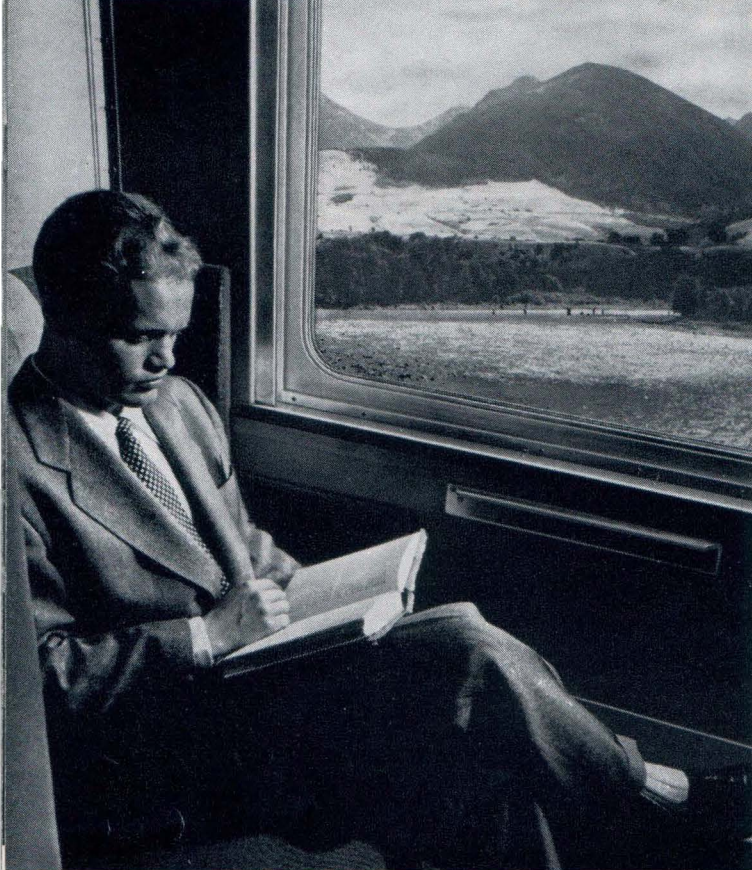


**"Saddling up the rider."** With a veteran cowhand to guide you, you'll soon feel right at home astride your trail-wise western pony.

**O-o-oh that strawberry roan!** You spend nights around a campfire, hear songs and stories of the Old West. There's often a pow-wow, barbecue or dance for an evening's fun.







*Relax in the privacy of your own room.*

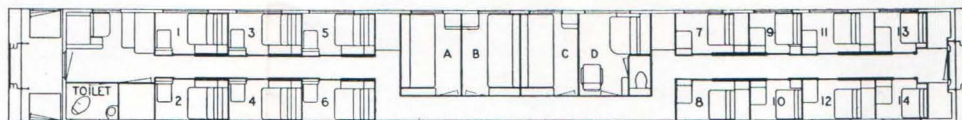
# LUXURIOUS SINGLE ROOMS

**IN STANDARD PULLMANS-  
ROOMETTES, DUPLEX ROOMETTES,  
DUPLEX SINGLE ROOMS**

*If you're riding alone a Roomette, Duplex Roomette or Duplex Single Room is made to order for you. You settle back in your seat with "weather" controls, ice water tap right at hand. Complete toilet facilities are also in your room.*

## DIAGRAM OF ALL-ROOM PULLMAN

- 1, 2, 3, 4, 5, 6—Roomettes
- A, B, C—Double Bedrooms
- D—Compartment
- 7, 8, 11, 12—Upper Duplex Roomettes
- 9, 10, 13, 14—Lower Duplex Roomettes

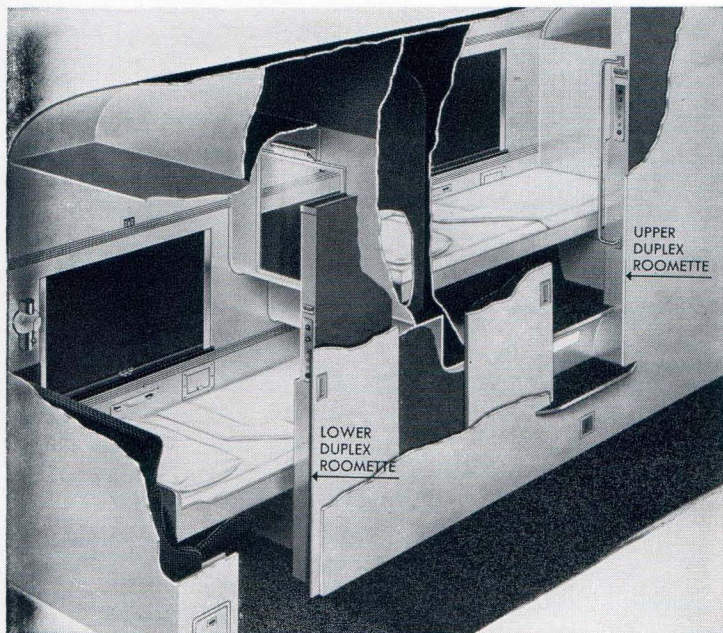


*Corner of Duplex Single Room.*

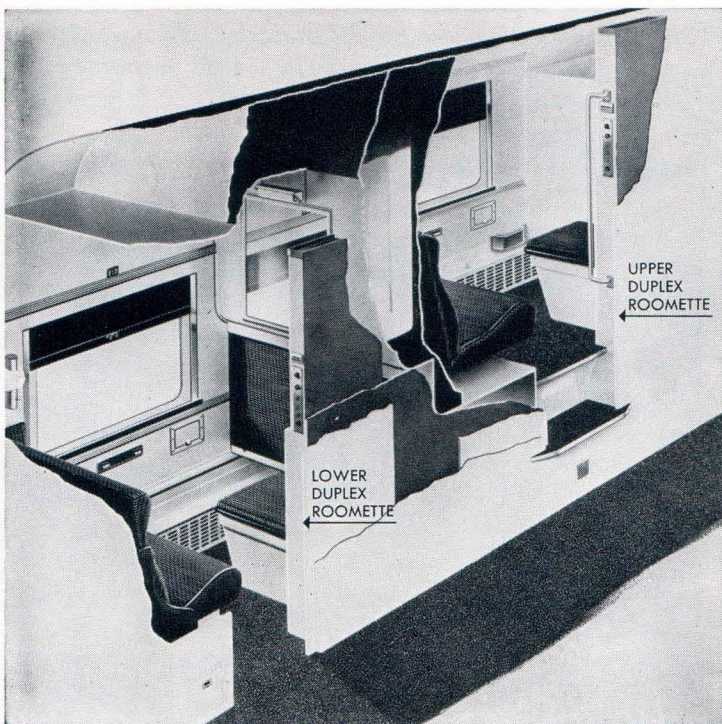
Whenever you're sleepy, the turn of a handle brings out your commodious Pullman bed—readymade. Duplex Roomettes cost about 10% more than a standard Pullman lower; regular Roomettes are slightly larger, slightly higher in price.

**Duplex Single Rooms** on the North Coast Limited are directly below the dome in the *Vista-Dome* Sleeping cars. (See floor plan on second following page.) Each room has complete facilities for the utmost in travel comfort, including toilet and lavatory, and a long sofa which makes into an exceptionally comfortable bed at night. These rooms are designed for single occupancy but are arranged so that two adjoining rooms may be opened into one, providing de luxe accommodations for two adults.





*Cutaway view shows Upper and Lower Duplex Roomettes made up for night occupancy.*

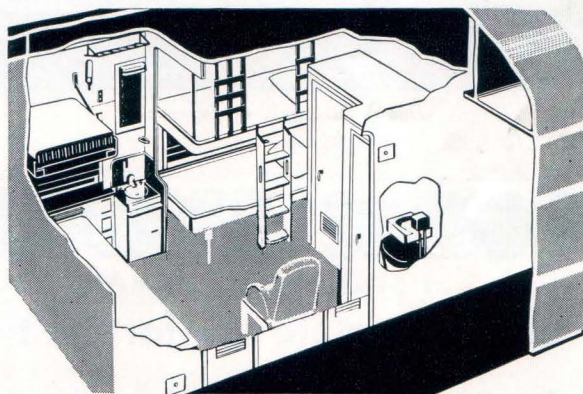


*Cutaway view shows Upper and Lower Duplex Roomettes made up for daytime travel.*

## For Groups . . . **COMPARTMENT** or Room Suite IN STANDARD PULLMANS

For two or more people, such as a family group, the Compartment or Room Suite on the North Coast Limited provides ideal accommodations. The Compartment has a broad sofa and extra arm chair . . . makes into two beds at night. Combined with a bedroom by opening the folding partition between, two more berths are available. This room suite takes the drawing room rate and provides plenty of room for four adults or three adults and two children.

The cutaway view, below, shows a compartment and bedroom ensuite with beds made up ready for night occupancy.



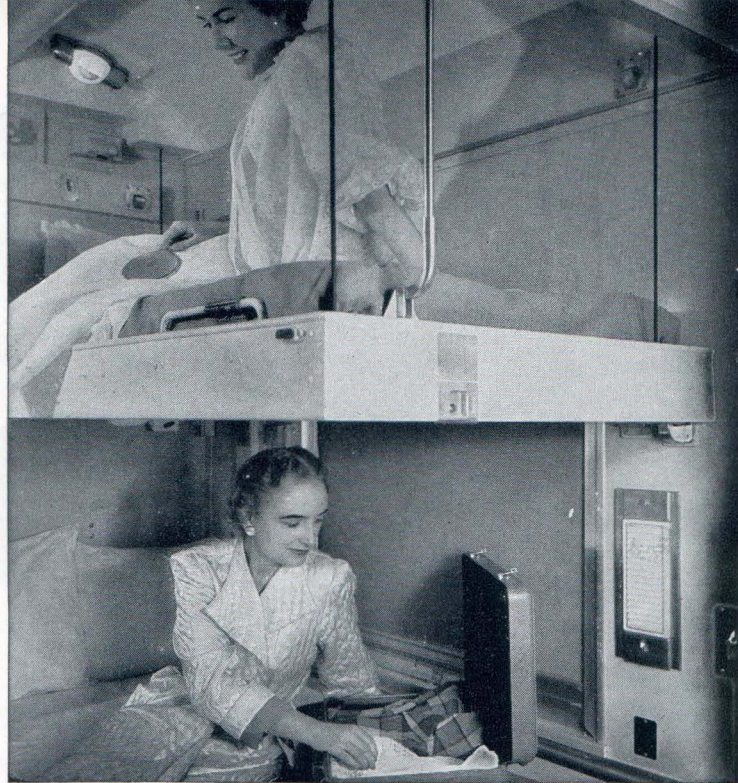
**LOW "FAMILY-PLAN" FARES** offer substantial savings for families traveling together. On round trips it works like this: head of family pays regular round trip fare, other parent pays one-way fare for round trip. Children 12 through 21 pay one-way fare for round trip, children 5 through 11 pay one-half one-way fare for round trip; children under 5 free. Comparable savings on one-way trips. These savings are available for trips starting Monday through Thursday of any week.

**DRIVE-YOURSELF CARS** are available in the larger cities along the Northern Pacific. Any NP agent or representative will be glad to make advance arrangements for you to rent a car for your exclusive use at your destination. Rates are reasonable. Travel by train, arrive refreshed and rested, use a Drive-Yourself car at destination.





*Double Bedroom in day use*



*Double Bedroom at night*

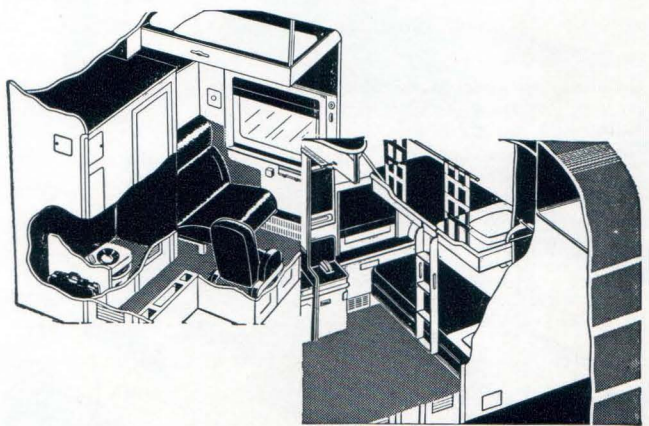
## DOUBLE BEDROOMS

IN STANDARD PULLMANS

**offer complete comfort for two**

Traveling together? A double bedroom will suit you perfectly. Toilet facilities, baggage rack, closet, everything you need is right in your room. There are two beds, one above the other. A sliding partition lets you occupy two bedrooms en suite—ideal for a family of four.

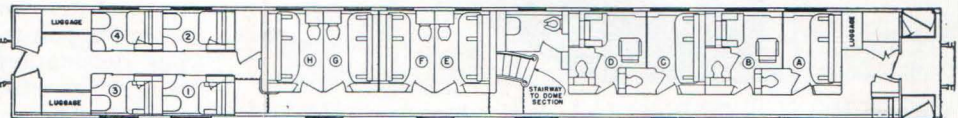
In the Vista-Dome sleeping cars (see diagram below) there also are duplex single rooms designed for single occupancy.



Cut-away sketch at left shows bedroom by day; at right, the bedroom at night.

### MAIN FLOOR DIAGRAM OF VISTA-DOME SLEEPING CAR

A, B, C and D—Double Bedrooms  
E, F, G and H—Duplex Single Rooms  
1, 2, 3, and 4—Roomettes







**Largest Northwest city, gateway to Alaska and the Orient, is Seattle. Here you swim, sail or fish in salt-water Puget Sound or**

**in fresh-water Lake Washington. On a land-and-water cruise you visit attractive parks and gardens, cruise the busy harbor.**

## You'll find every kind of vacation in the **PUGET SOUND COUNTRY**

You can climb a mountain, explore quiet trails in giant forests and swim in salt water—all in one day in this versatile vacation paradise. You can board a ship

and sail sheltered seas, with mountain skyline views. You can visit the waterfront of a coast city with its teeming and colorful activities. If you are an angler, the great King Salmon or the wily trout are there in abundance to challenge your skill.

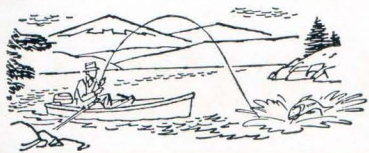
The mild climate is just as hospitable as the warm-hearted folks you'll meet. Days are warm, nights are cool. The air is spiced with the scent of evergreens, crisp and invigorating.

**Outstanding civic event in Seattle is the annual Seafair celebration, featuring a giant parade, nationally famous speedboat racing and numerous other activities.**

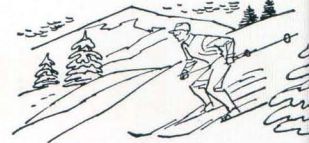
**Gateway to two national parks is Tacoma, lumber capital of the U.S. It's the closest point on Northern Pacific to Rainier Park and primitive Olympic Park as well.**







# PACIFIC NORTHWEST



**Timberline Lodge**, less than two hours drive from Portland, sits 6,000 feet high on Mt. Hood—one of America's popular mountains for skiing and climbing.



**Portland**, with snow-crowned Mt. Hood on its skyline, is one of the Pacific Coast's most important ports. Its rose gardens are world-famous, as is the annual Rose Festival held each June.



The magnificent **Columbia River Highway** is a marvelous sightseeing trip from Portland. You'll also see the Columbia for many miles from your Vista-Dome seat on the train.



**620-ft. Multnomah Falls**, highest of eleven falls in eleven miles along the Columbia River, is typical of nature's lavish beauty in the Pacific Northwest.



Enroute to or from

# CALIFORNIA-CANADA-ALASKA-HAWAII

enjoy the Vista-Dome North Coast Limited one way via Seattle or Portland



**Skyline of San Francisco.** Oakland Bridge, one of two which span San Francisco Bay, is in the foreground. California visitors may add much enjoyment and pleasant travel at little extra cost by going one way through the scenic Pacific Northwest.



**Vancouver, British Columbia,** metropolis of western Canada, is a pleasure trip by train or steamer from Seattle. Victoria, "a bit of old England" also is an interesting sidetrip by steamer, or stopover enroute between Seattle and Vancouver.



**Famed Waikiki Beach** and Diamond Head, Honolulu, Hawaii, "Pearl of the Pacific" and our newest state, is an easy 8-hour flight from the Seattle-Tacoma airport. Or travel to California via the scenic Pacific Northwest, thence by luxury liner to Honolulu.



**Alaska beckons beyond Main Street!** Choice of many interesting cruises. Go by steamer or train from Pacific Northwest cities to Vancouver, thence by luxurious liner through famed Inside Passage to the storybook Land of the Midnight Sun.





Evening shadows lengthen as the Vista-Dome North Coast Limited speeds into the Montana sunset after a scenic journey through the Rockies.

## Plan Your

## NORTHWEST ADVENTURE now . . .

We'll be glad to quote specific fares for your trip on the Vista-Dome North Coast Limited—or provide detailed information on any resort or vacation spot along the Main Street of the Northwest. There is no obligation. Just write G. W. Rodine, Passenger Traffic Manager, Northern Pacific Railway, St. Paul 1, Minn., or contact any of NP's travel offices listed at the right.

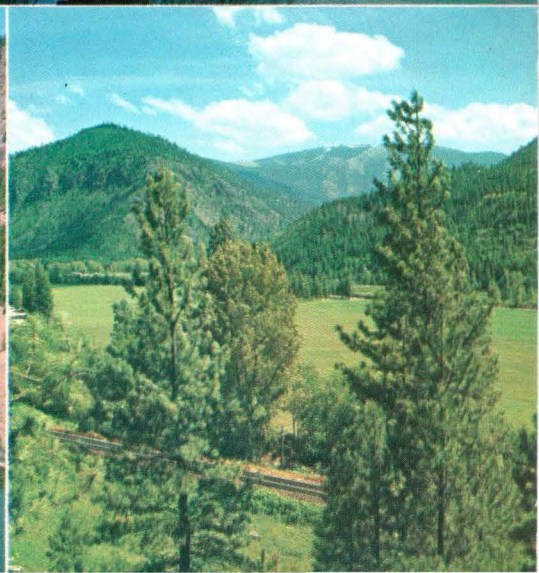
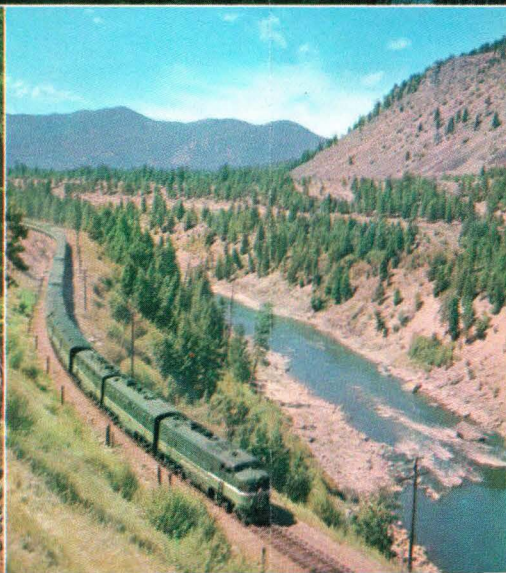
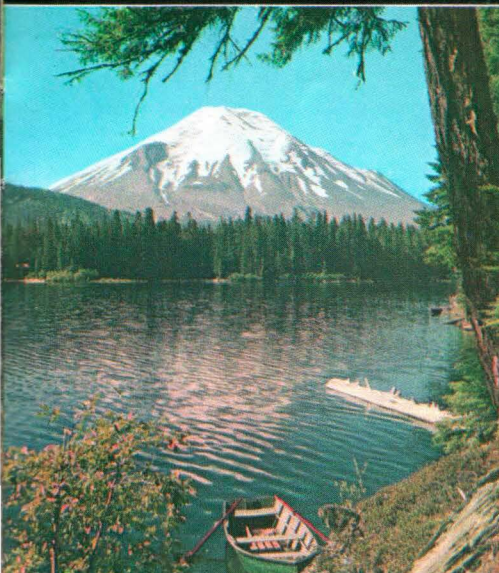
## NORTHERN PACIFIC

### TRAVEL OFFICES

ABERDEEN, WASH. . . . . Room 5, Union Station  
 ATLANTA 3, GA. . . . . 1313 Healey Bldg.  
 BELLINGHAM, WASH. . . . . Northern Pacific Station  
 BILLINGS, MONT. . . . . Northern Pacific Station  
 BUFFALO 3, N. Y. . . . . 601 Ellicott Square  
 BUTTE, MONT. . . . . Northern Pacific Station  
 CHICAGO 3, ILL. . . . . 1172 Marquette Bldg.  
 CINCINNATI 2, OHIO . . . . . 1409 Carew Tower  
 CLEVELAND 13, OHIO 1334 Terminal Tower Bldg.  
 DALLAS 1, TEXAS . . . . . 1009 Kirby Bldg.  
 DENVER 2, COLO. . . . . 307 Railway Exchange Bldg.  
 DETROIT 26, MICH. . . . . 810 Lafayette Bldg.  
 DULUTH 2, MINN. . . . . Room 111, Union Station  
 EUGENE, ORE. . . . . Cascade Bldg.  
 EVERETT, WASH. . . . . Northern Pacific Station  
 FARGO, N. D. . . . . Northern Pacific Station  
 HELENA, MONT. . . . . Northern Pacific Station  
 KANSAS CITY 6, MO. . . . . 411 Board of Trade Bldg.  
 LEWISTON, IDAHO . . . . . Room 10, Union Station  
 LOS ANGELES 14, CAL. . . . . 610 S. Main, Rm. 464  
 MILWAUKEE 3, WIS. . . . . 913 Majestic Bldg.  
 MINNEAPOLIS 2, MINN. . . . . 101 So. 7th St.  
 MISSOULA, MONT. . . . . Northern Pacific Station  
 NEW YORK 20, N. Y. . . . . 630 Fifth Ave., Room 605  
 OAKLAND 12, CAL. . . . . 611 Central Building  
 OMAHA 2, NEB. . . . . 309 W. O. W. Bldg.  
 PASCO, WASH. . . . . Northern Pacific Station  
 PHILADELPHIA 9, PA. . . . . 123 S. Broad St., Room 926  
 PITTSBURGH 22, PA. . . . . 608 Park Bldg.  
 PORTLAND 4, ORE. . . . . 439 S. W. 6th Ave.  
 ST. LOUIS 2, MO. . . . . 921 Boatmen's Bank Bldg.  
 ST. PAUL 1, MINN. . . . . Hotel St. Paul  
 SAN FRANCISCO 5, CAL. . . . . 1003 Monadnock Bldg.  
 SEATTLE 1, WASH. . . . . 506 Union St.  
 SPOKANE 4, WASH. . . . . Northern Pacific Station  
 SUPERIOR, WIS. . . . . 2026 Winter St.  
 TACOMA 1, WASH. . . . . Northern Pacific Station  
 TORONTO 1, ONT. . . . . Room C-29, Union Station  
 VANCOUVER 1, B. C. . . . . 475 Howe St., Room 207  
 VICTORIA, B. C. . . . . 1006 Government St.  
 WALLA WALLA, WASH. . . . . Northern Pacific Station  
 WASHINGTON 5, D. C. . . . . 500 Shoreham Bldg.  
 WINNIPEG, MAN. . . . . Rm. 40 Trans-Canada Bldg.  
 YAKIMA, WASH. . . . . Northern Pacific Station

NP—The Scenic Route . . . Right, above—Majestic Mount Rainier and Reflection Lake—all-year playground reached from Seattle or Tacoma. Below (left to right) Beautiful Mt. St. Helens, seen between Seattle and Portland; Vista-Dome North Coast Limited in Montana Rockies; Hellgate Canyon, beauty spot in the Rockies.







# "Hello, I'm Sue, Your Stewardess-Nurse"



"Sue" exemplifies the corps of friendly, capable young women, all registered nurses, who help make travel more pleasurable on the

## VISTA-DOME NORTH COAST LIMITED

One of the World's  
*Extra Fine Trains*

