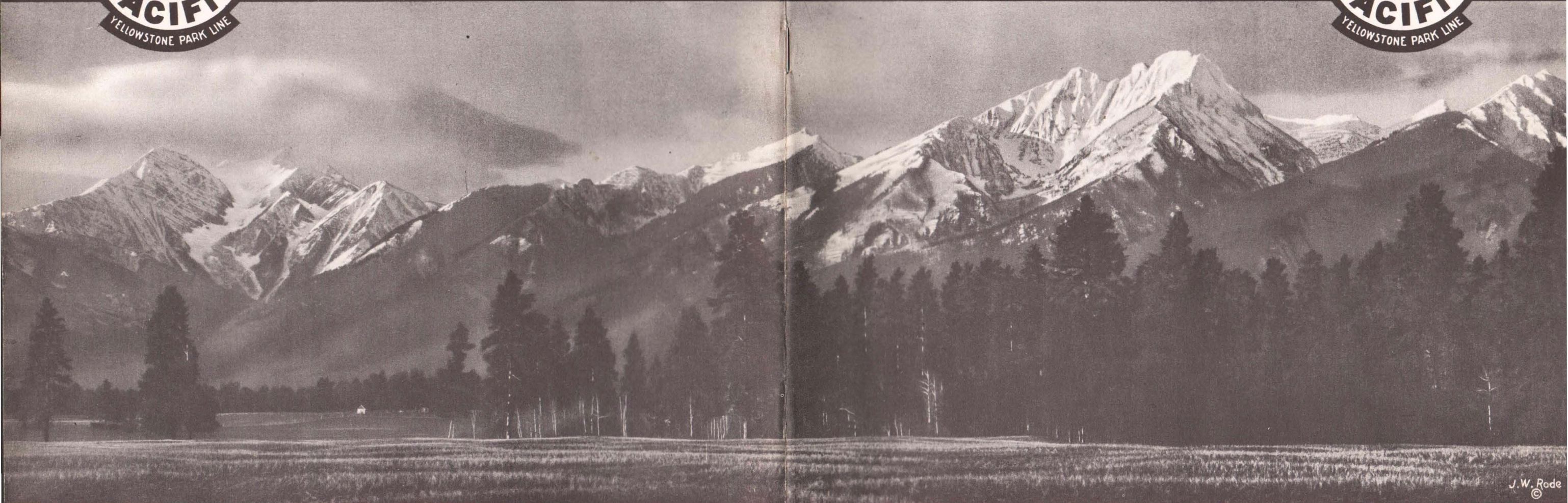


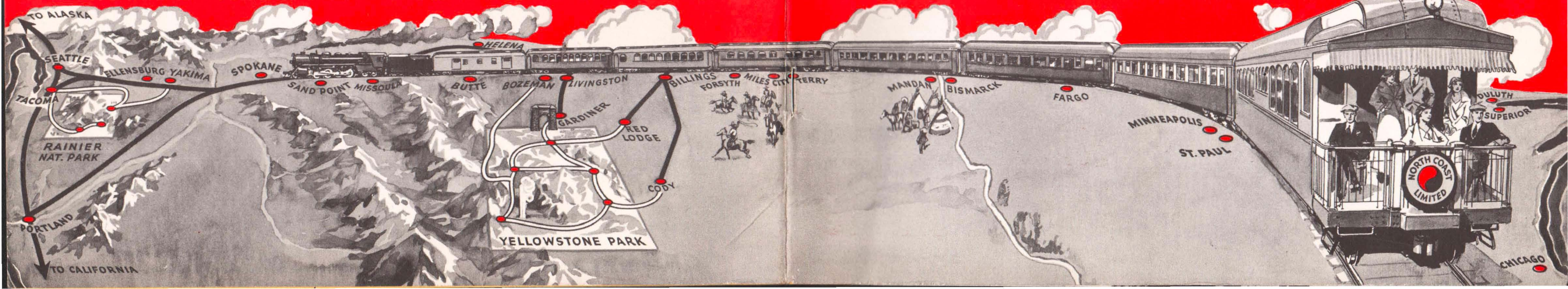
WEST WEST



J.W. Rode ©

SCENIC ROUTE ACROSS AMERICA

SCENIC ROUTE ACROSS AMERICA

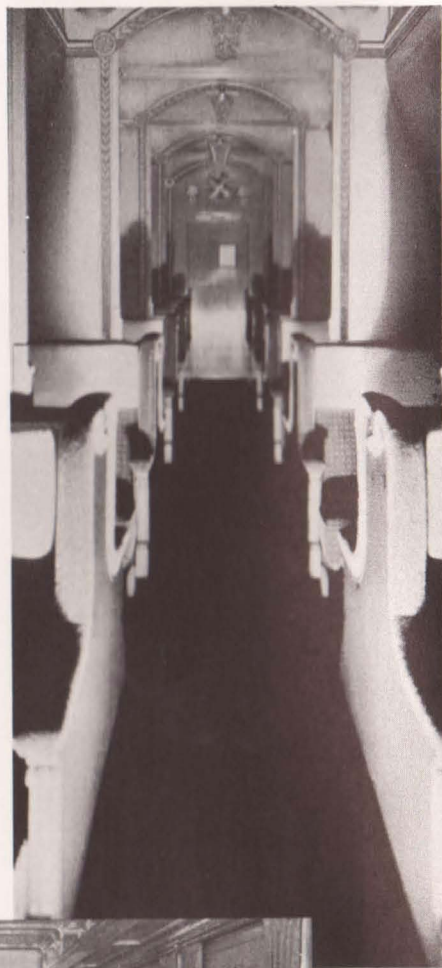


West — via the Northern Pacific

All aboard! It's leaving time. The luxurious North Coast Limited, air-conditioned like a spring morning, is ready for its journey across the plains and mountains to the North Pacific coast. Easy chairs are waiting in the handsome club-like observation car and it and every car on the train will look out upon a picturesque country which makes everybody want to go West.

In addition to most modern standard Pullmans, dining and observation-club cars, the North Coast Limited carries newly-conditioned tourist sleeping cars with reserved accommodations, and de luxe coaches for travelers wishing essential comforts at the lowest possible cost.

Complete air-conditioning of every car, hospitable service and famously good Northern Pacific meals will add to your enjoyment of the scenic procession on the route of the "First of the Northern Transcontinentals".

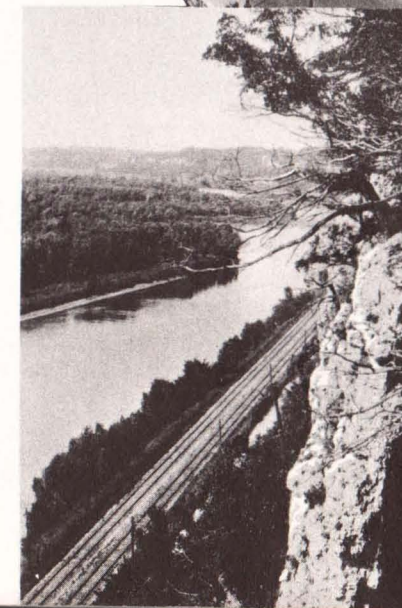


"Spires of business" towering gracefully and loftily, to make Chicago one of the most metropolitan of cities.



Chicago Union Station, one of the largest in the world since its opening in 1925, was erected at a cost of \$60,000,000. Track and other arrangements put the total at \$95,000,000.

Chicago, second largest city of the United States and daily the railroad center for hundreds of trains from all sections of the nation and most of North America, is the starting point of the journey. The North Coast Limited leaves the Chicago Union Station and runs via the Burlington Route across northern Illinois and along the Wisconsin bank of the Mississippi river to Saint Paul.



Where "Ol' Man River"—the Mississippi—gathers his forces to roll southward, the Burlington Route basks in the smile of Nature for 300 miles, Savannah, Illinois, to Saint Paul.

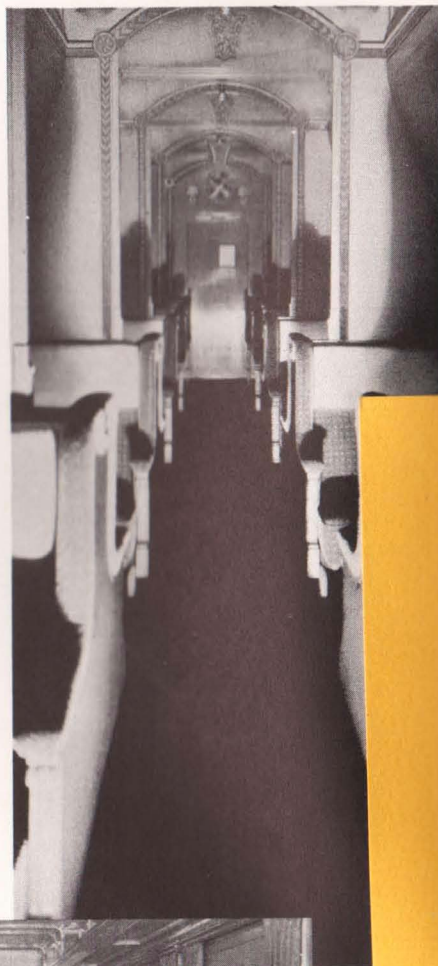


West — via the Northern Pacific

All aboard! It's leaving time. The luxurious North Coast Limited, air-conditioned like a spring morning, is ready for its journey across the plains and mountains to the North Pacific coast. Easy chairs are waiting in the handsome club-like observation car and it and every car on the train will look out upon a picturesque country which makes everybody want to go West.

In addition to most modern standard Pullmans, dining and observation-club cars, the North Coast Limited carries newly-conditioned tourist sleeping cars with reserved accommodations, and de luxe coaches for travelers wishing essential comforts at the lowest possible cost.

Complete air-conditioning of every car, hospitable service and famously good Northern Pacific meals will add to your enjoyment of the scenic procession on the route of the "First of the Northern Transcontinentals".

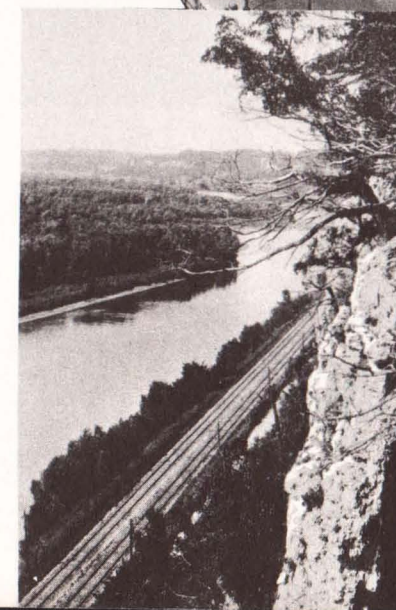


"Spires of business" towering gracefully and loftily, to make Chicago one of the most metropolitan of cities.



Chicago Union Station, one of the largest in the world since its opening in 1925, was erected at a cost of \$60,000,000. Track and other arrangements put the total at \$95,000,000.

Chicago, second largest city of the United States and daily the railroad center for hundreds of trains from all sections of the nation and most of North America, is the starting point of the journey. The North Coast Limited leaves the Chicago Union Station and runs via the Burlington Route across northern Illinois and along the Wisconsin bank of the Mississippi river to Saint Paul.



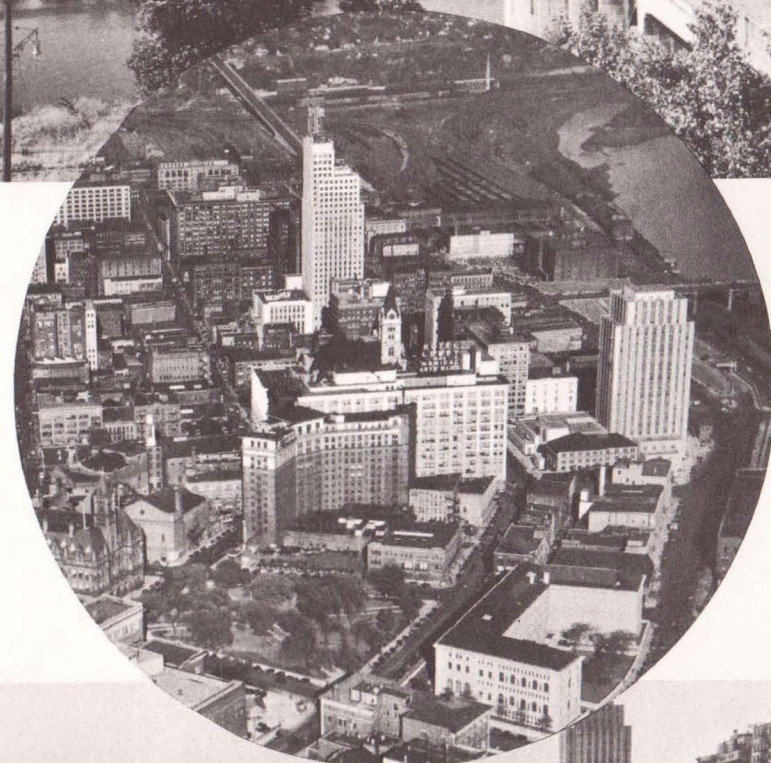
Where "Ol' Man River"—the Mississippi—gathers his forces to roll southward, the Burlington Route basks in the smile of Nature for 300 miles, Savannah, Illinois, to Saint Paul.





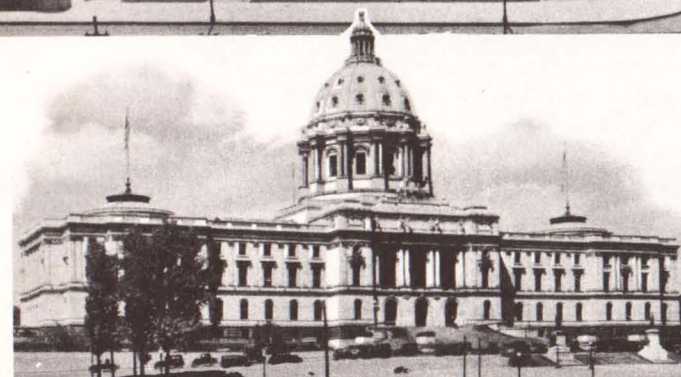
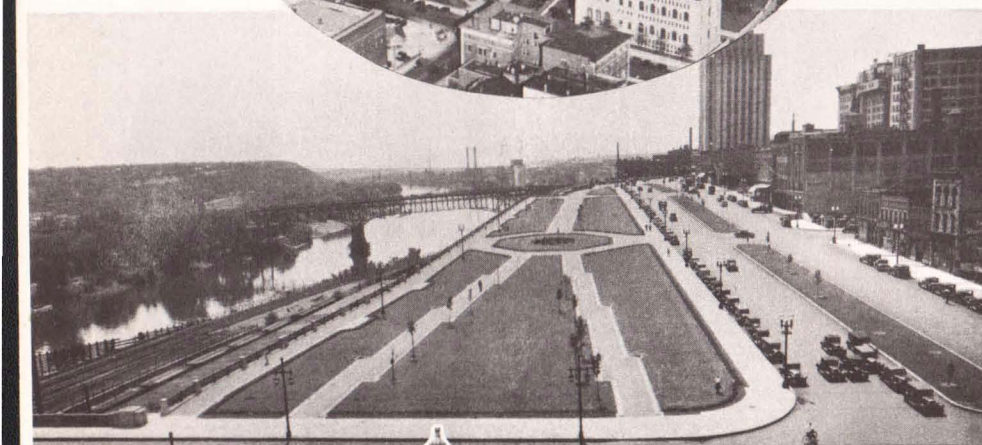
Minneapolis from the Third Avenue bridge and the waterpower site on the Mississippi (St. Anthony Falls), which led to the city's development as processing center for Northwest products, principally grain. Northern Pacific trains skirt the northwestern corner of the University of Minnesota Campus.

Commercial and industrial section of downtown Saint Paul as seen from the air. (© 3 Hawks.)

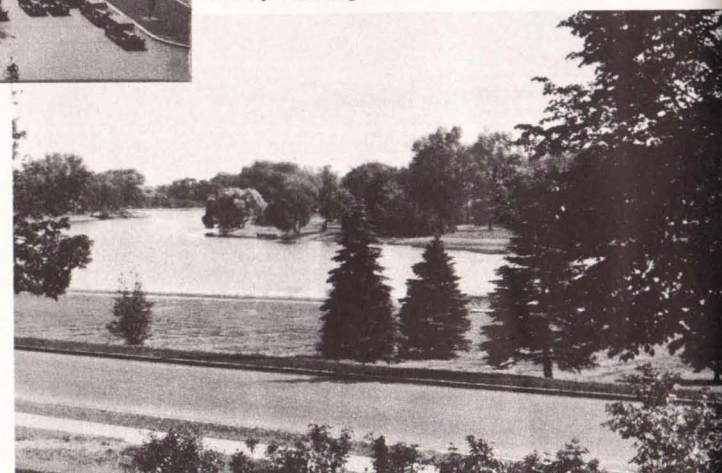


The Twin Cities, Saint Paul and Minneapolis, gateway to the Northwest, mark entry into the dairy, grain and livestock ranching country of the Northwest, the iron mining and timber districts of the North Woods and Minnesota's playland of 10,000 lakes.

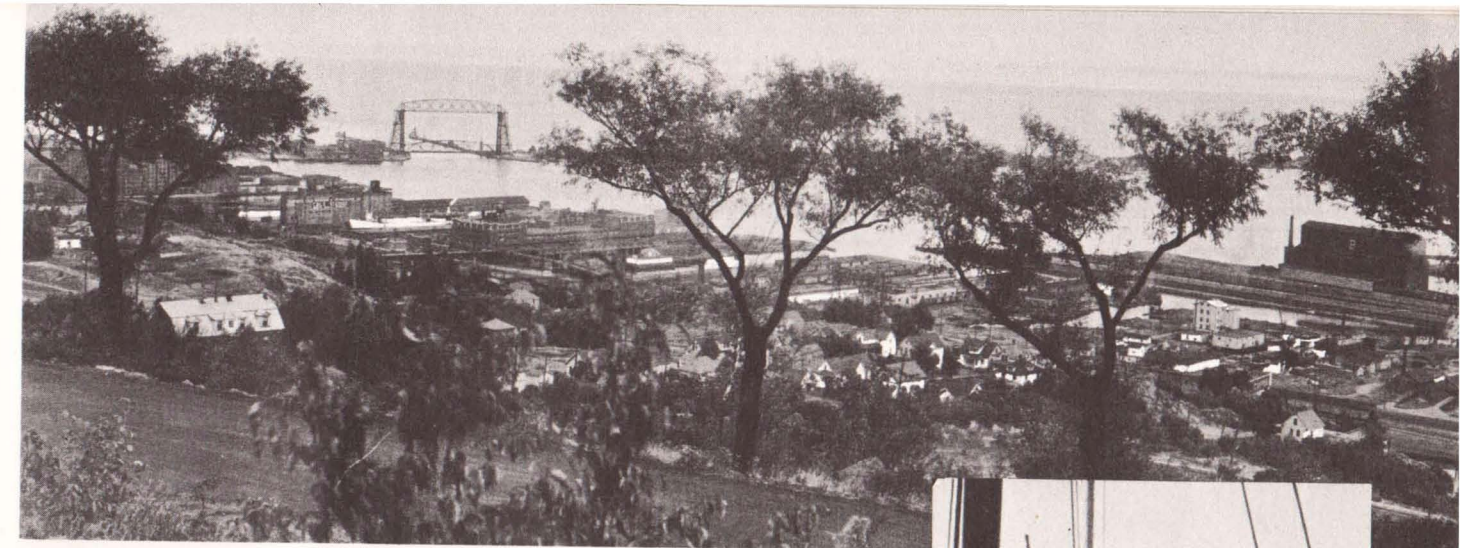
Kellogg Boulevard, Saint Paul, named in honor of prominent Saint Paulite, Frank B. Kellogg, international apostle of peace. An extensive view of the Mississippi appears from the esplanade. On the right is the tower-like city-county building.



Minnesota's handsome capitol, built of Georgia marble in Italian renaissance style, overlords Saint Paul.



Adorning each city are eleven natural lakes, some of them encircled by beautiful parkways.



Duluth, by the shores of Lake Superior, the "Gitche Gume" of the poem, "Hiawatha", is second to the port of New York in the amount of tonnage handled.

Minnesota— "Land of Sky Blue Water"

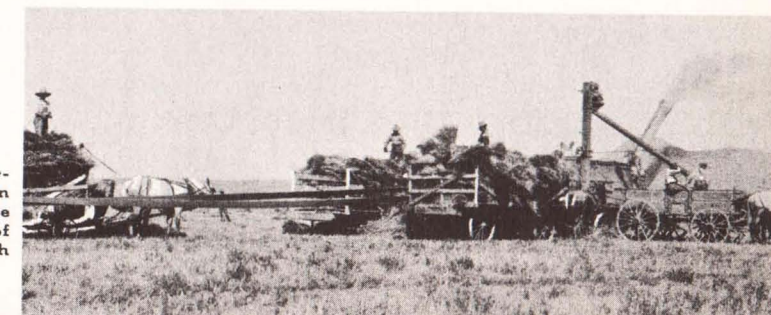


Haunts of pike, pickerel, whitefish, lake trout, sturgeon, black bass and muskellonge. Only the lapping water, splashing waterfowl and fish, or the occasional bellowing of moose in northern wildernesses, break the silence.

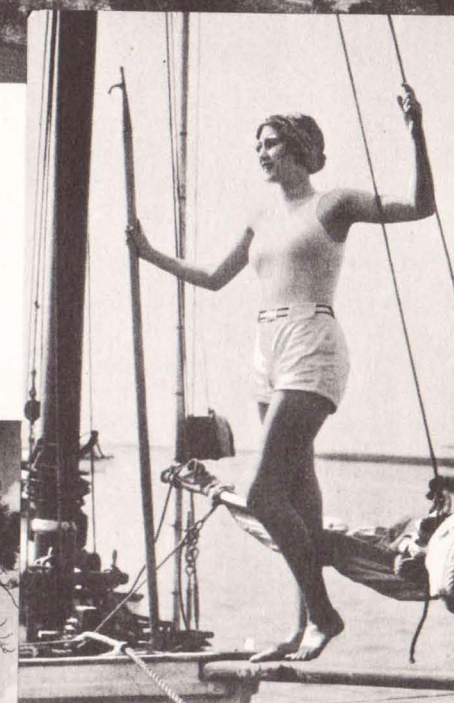


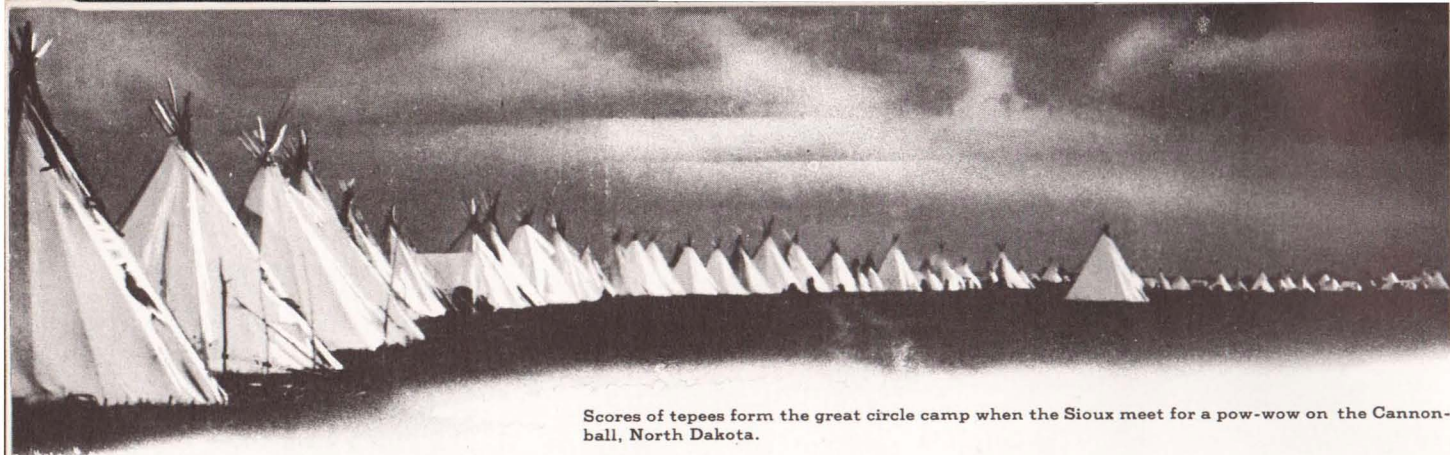
A "world thrill" in fishing—when the angler lands a mighty muskellonge of the north.

Garnering the yellow harvest—a typical Northern Pacific train window scene in season, on the plains of western Minnesota, North Dakota and Montana.



Enticing summer cottages border the wooded shores of the State's numberless lakes in the lake park region, the Arrowhead Country and the Rainy Lake district.





Scores of tepees form the great circle camp when the Sioux meet for a pow-wow on the Cannonball, North Dakota.



A little princess of the Crow tribe and her mascot. (© Throssel.)

"Heapgoodfrost", Bear's Heart, old Sioux warrior, remarks of the white man's ice cream cone.



Eagle Staff, mighty hunter and warbonnet maker who fought against Custer, takes his turn at the tom-tom.



A typical Indian sub-deb who attends the white man's school.

Old Indian country—where Indians and buffalo still live—swings past Northern Pacific windows throughout the Northwest journey. Four reservations along the way are homes of almost a score of tribes. Six of the states traversed, Minnesota, North Dakota, Montana, Idaho, Washington and Oregon have an Indian population of 60,000.



The Bison Hunt of former days in the Northern Pacific country.

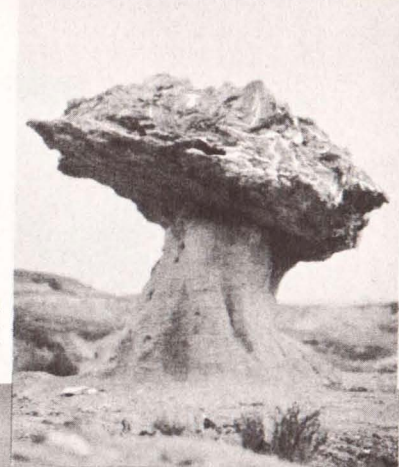


Indian dancers often entertain Northern Pacific travelers in summer at Mandan, North Dakota.

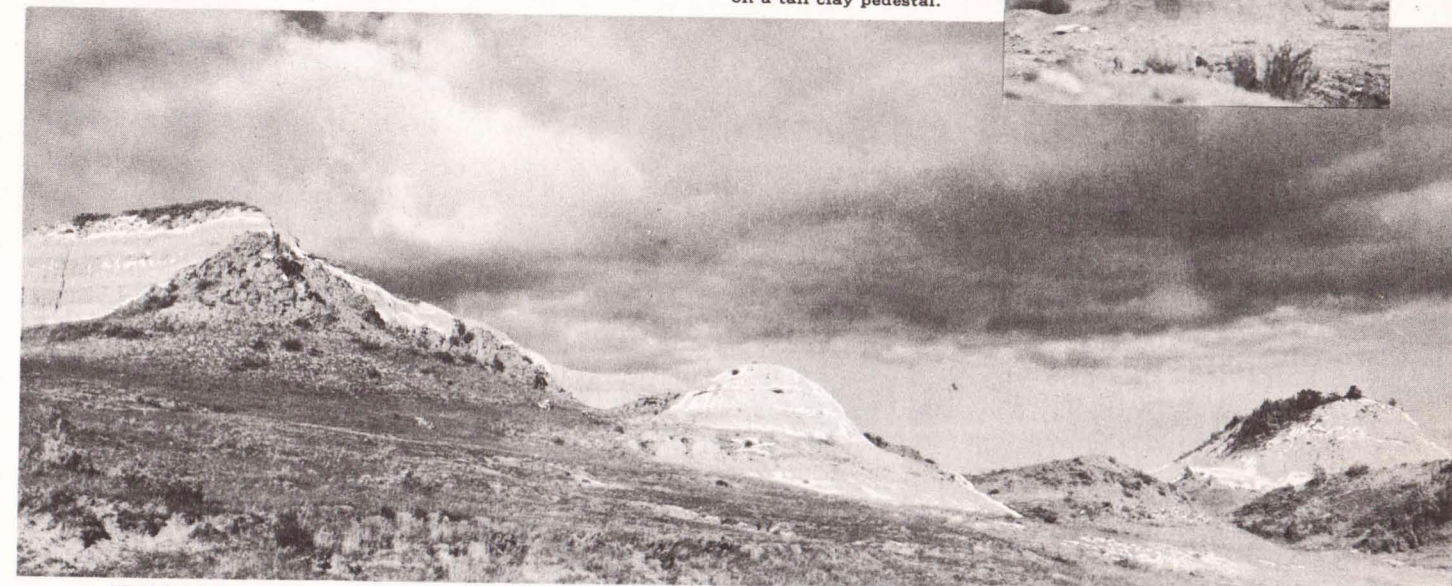


Patesni—"Did-No-Butcher"—one of the last oldtime Sioux warriors, never scalped his fallen foes.

North Dakota's Colorful Bad Lands

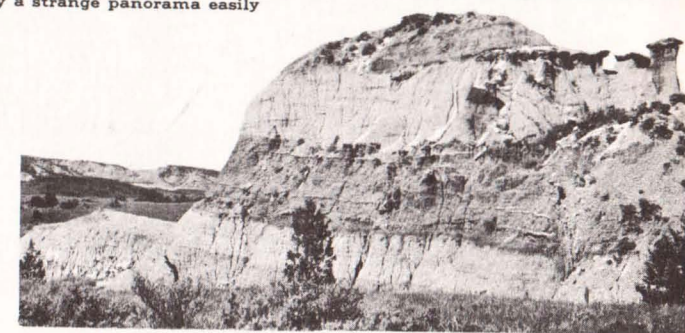


One of the freak bad land sights is a petrified stump 12 feet in diameter resting on a tall clay pedestal.



"Bad lands for travel", as the pioneers called them, are now only a strange panorama easily spanned by train.

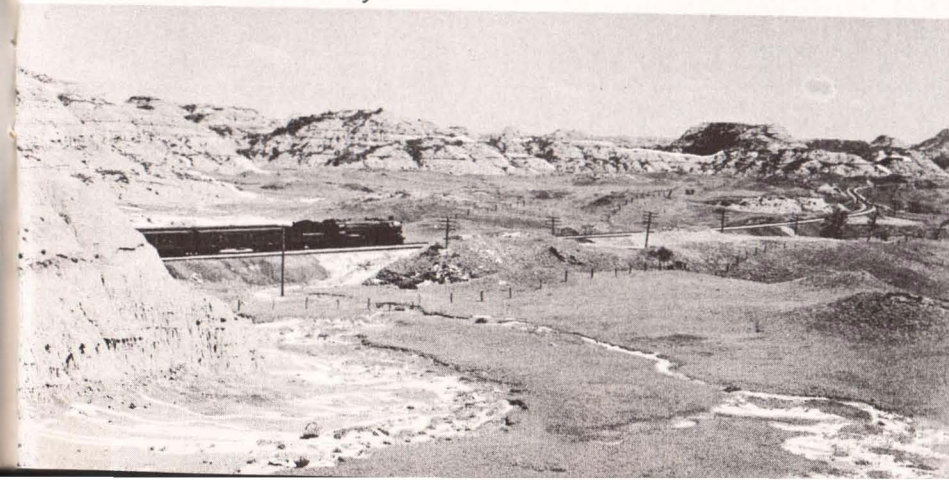
West of Dickinson, Northern Pacific trains steam for thirty miles through the weird and fantastic fire-painted bad lands which General Sully campaigned in 1864 and picturesquely called "hell with the lights out". Through the same area General Custer marched west in 1876 and Theodore Roosevelt ranched and hunted buffalo in the 80's. Part of this region has been set aside and designated, "Theodore Roosevelt National Monument", in honor of the "Cowboy President" who recruited some of his "Rough Riders" in this locality.



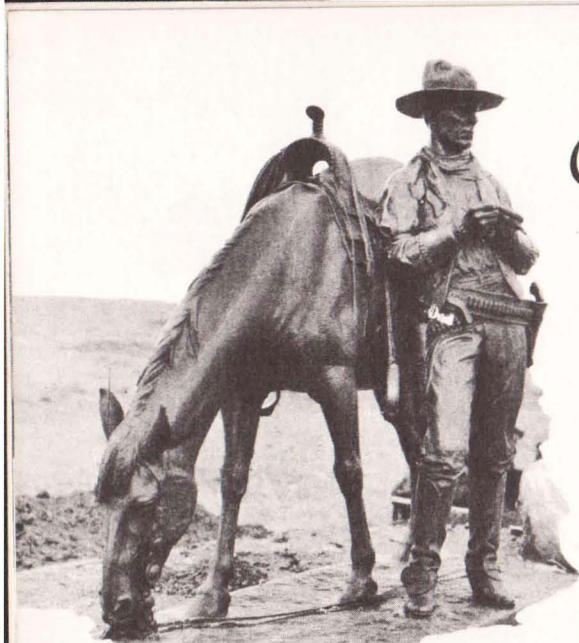
Geological secrets of ten million years lie buried in the grotesque formations, among which is Tortoise Butte in Cedar Canyon.



This cabin, Theodore Roosevelt's ranch home in the Bad Lands, now stands on the North Dakota state capitol grounds in Bismarck.

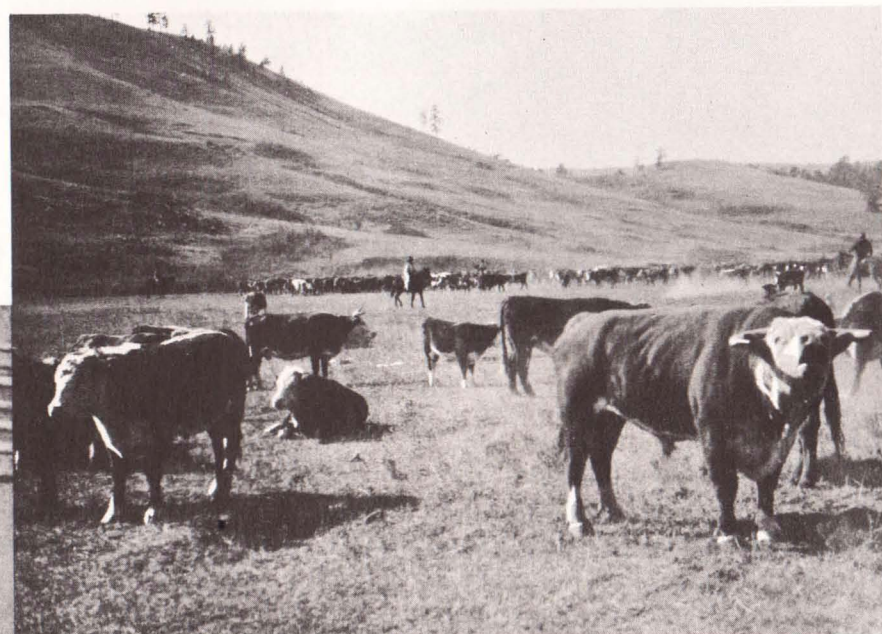
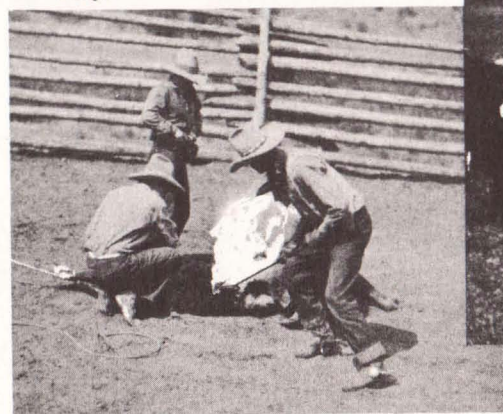


Flaming red, forged by lignite fires in past ages, is the most striking of many colors in this weird landscape seen from the North Coast Limited.



Expressive of ranch life is the Christadora statue, "Range Rider of the Yellowstone", overlooking the Northern Pacific route from the rimrock near Billings, Montana. It was posed by William S. Hart, western hero of the silent screen, and his horse "Paint". (© Petek.)

Applying the brand is the job of a moment but it is permanent evidence of ownership however far the animal may stray.



Roundup time on the plains, when the ranchers harvest their calf crop in the spring or beef crop in the fall, is a big event in the cattle country.

Eastern Montana

Montana, "Treasure State", where mines and ranches meet, traces its ranch industry to the stirring days of the Chisholm Trail over which great herds of longhorn cattle surged north from Texas to Montana ranges. With completion of the Northern Pacific in 1883, the tireless iron horse replaced the long, perilous cattle drives and rapidly expanded the picturesque ranching enterprises which are one of the charms of the West.

The Rosebud Coal Fields

In the ranch country is located the world's largest open strip coal mine, owned and operated by the Northern Pacific at Colstrip, Montana, and estimated to contain upwards of 240,000,000 tons. The mine is located just south of Forsyth, Montana, and is tapped by a branch line. All Northern Pacific locomotives, from Dilworth, Minnesota, to Spokane, Washington, are fueled from the Colstrip mine, their requirements being about 1,000,000 tons a year.

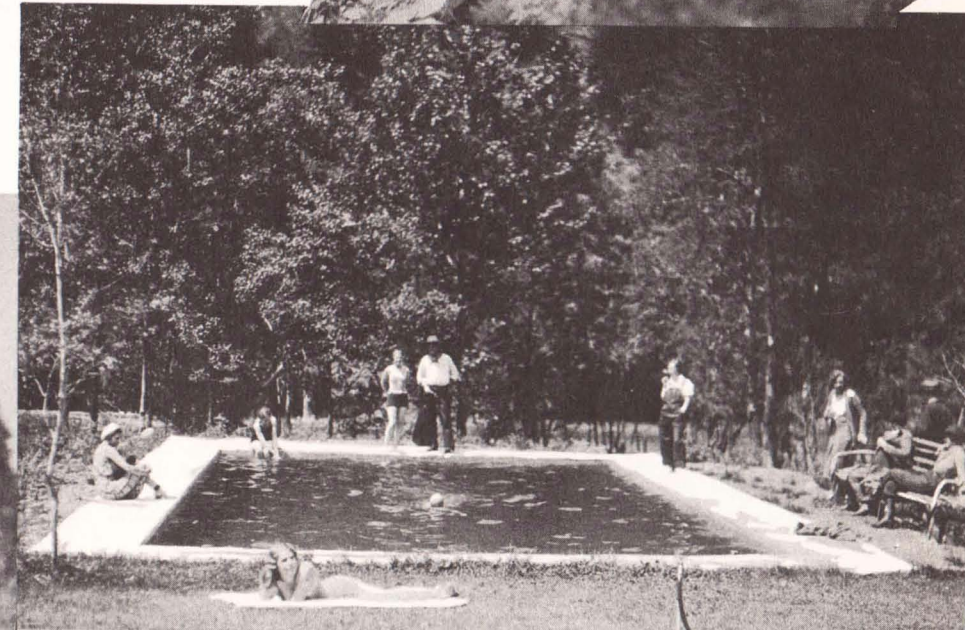


Trail riders out to explore pine-scented forests of the Rockies where deer, bear and elk roam wild.

Dude Ranches

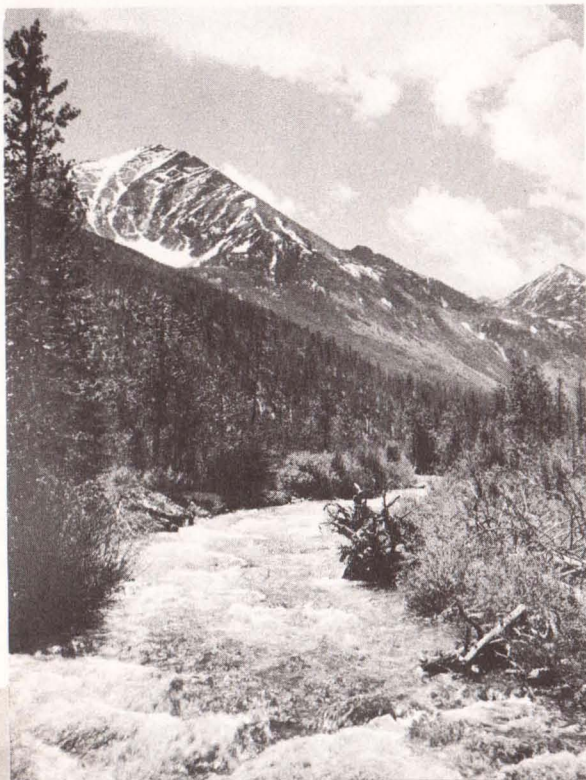
Mountain time, mountain grandeur and mountain adventure! Across Montana, Wyoming and Idaho extends the Dude Ranch country where many visitors annually adopt western ranch life as a typically American form of vacation not to be had or enjoyed elsewhere. Between Forsyth and Missoula, Montana, Northern Pacific trains are in the heart of the ranch country where scores of dude ranches, livestock ranches, hunting lodges, resort hotels and wilderness camps are guest headquarters throughout the summer or the year round. In this same territory are staged summer rodeo celebrations which are nationally known for western color and thrilling cowboy feats.

A lucky lad realizing every boy's ambition—"learning the ropes" from a real western cowboy.



Guests at a dude ranch enjoying the modern version of the "ol' swimmin' hole".



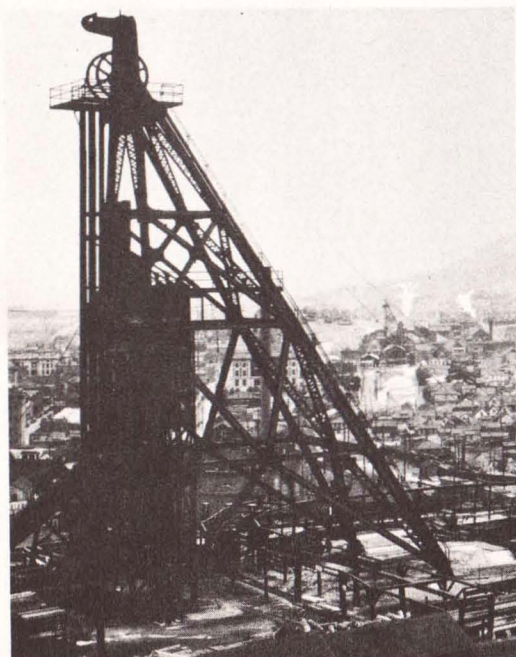


The Gallatin Valley

Among the rich mountain valleys enroute is the Gallatin, Montana, discovered and named by Lewis and Clark in 1805 for Albert Gallatin, Thomas Jefferson's secretary of the treasury. It is the leading agricultural section of Montana. Wealth, from farm produce to scenery, cattle, coal, asbestos, native fish and game, have made the valley noted. At Bozeman, its metropolis, is located Montana State College, headquarters for agricultural education in the state. The Bozeman-Gallatin way to Yellowstone Park passes through the fertile valley and scenic Gallatin Canyon.



Golden grain of the Gallatin Valley, basking under the same sky as the treasure of the mountains, has topped markets as far distant as Europe, Japan and Australia.
Above—Spanish Peaks, set aside by the national government as primitive area and big game refuge, for recreational purposes only.



"Greatest Mining Camp On Earth"

Looking downward through the train windows from the eminence of the great Continental Divide, Northern Pacific travelers see Butte, Montana, as a far-spreading, modern city rather than a mining camp. But in reality mine shafts are next door to business houses and the mine tunnels underground are ten times as extensive as the surface streets. From its subterranean "city" Butte lifts one-third of all the copper mined in the United States and one-sixth of the world's supply. Silver, lead, zinc and manganese are obtained from the same source.

On the Trail of Lewis and Clark

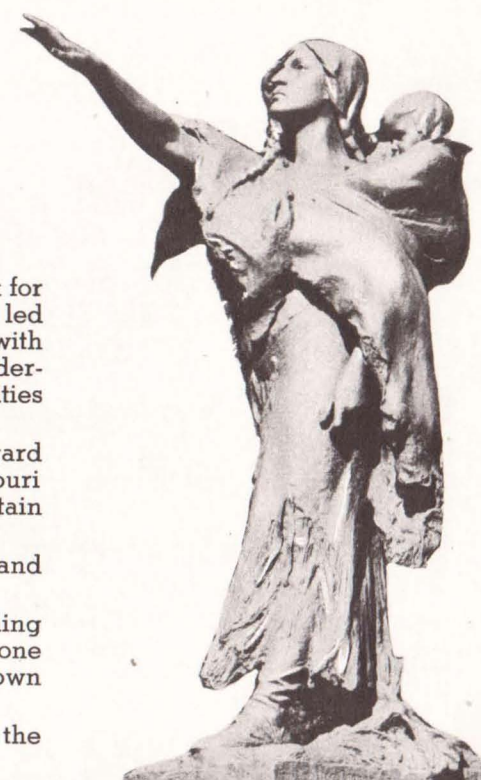
Following the original trail of Lewis and Clark for hundreds of miles, Northern Pacific trains steam "where a woman led the way". Sacagawea, 19 year-old Shoshone Indian mother, who with her papoose on her back piloted the white explorers across the wilderness, is commemorated by statues and memorials in several cities along the Northern Pacific.

Near Helena, Montana, Sacagawea led the white men westward through the "Gates of the Mountains", portal carved by the Missouri river in the Big Belt Range of the Rockies and named by Captain Meriwether Lewis.

Visitors to this place are charmed alike by its solemn beauty and its place in Northwest history.

"Nothing can be imagined more tremendous than the frowning darkness of these rocks", wrote Lewis in his diary. "The river, of one hundred fifty yards in width, seems to have forced its channel down this solid mass."

Until completion of the railroad, these pillars were the "gates to the far west" for those who voyaged by canoe or boat.



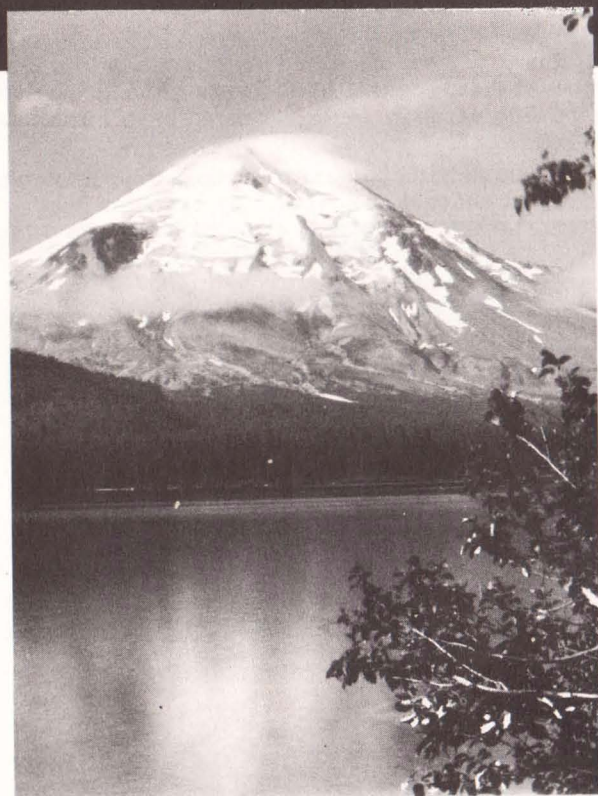


The Absarokas, one of the ranges walling Yellowstone Park, as seen from the train windows near Livingston, Montana.

Mountains for 1,000 Miles

Regiments of mountains file past in procession in the Northern Pacific journey across Montana, Idaho and Washington. Twenty-eight ranges, in all, border the route from Billings, Montana, to Seattle and Portland. The Continental Divide, Hellgate Canyon, Clark's Fork Canyon and the summit of the Cascade Range are among the spectacular sights in the mountain picture gallery which call forth special admiration. A climax is the crossing of the Rockies just east of Butte where in a single moment the train passes over the crest of the divide which separates the eastern slope from the Pacific slope. Counties lie under the view as the train ascends, doubles back, describes curves and presents views of peaks and chasms first from this side and then from that. The line through Helena, Montana, crosses the summit west of that city.

Lordly among mountains, the Mission Range, in view between Arlee and McDonald, Montana, rises nearly 10,000 feet.



Mt. St. Helens, one of a chain of seven snow-capped peaks in the Northern Pacific country in Washington and Oregon, is famed for symmetrical beauty.

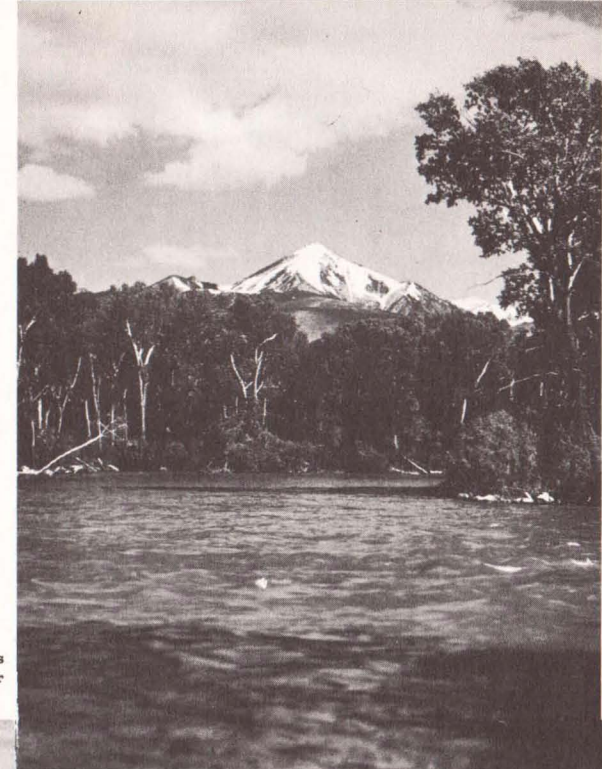
Bozeman Canyon, where westbound trains enter the Rockies, was trodden in 1806 by Lewis and Clark explorers.



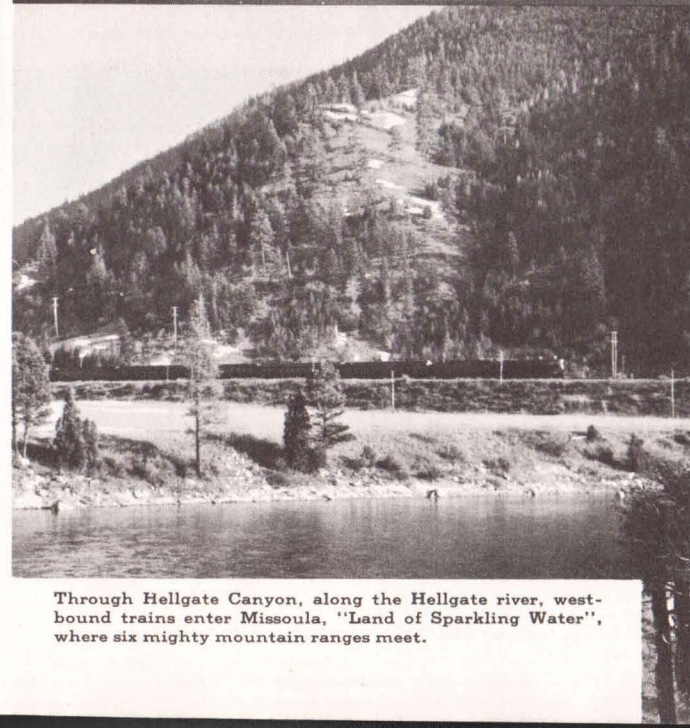
Rivers for 1406 Miles

Rivers, like trees—though majestic, beautiful, serviceable—often have to take a back seat for the more spectacular features of a country. People are prone to think of a river as something to be taken for granted but not so with the rivers of the Northwest. They tumble down the mountainside alive with game, fighting trout; cut their way through deep, kaleidoscopic canyons; sing of primitive days when Indians alone knew their courses; and wander o'er placid plains which one time heard only the bison stampede. Along their banks was found the first glint of mineral treasure. Five of the west's historic rivers appear in the North Coast Limited journey between Chicago and Seattle: The Mississippi, Missouri, Yellowstone, Clark Fork and Columbia.

The Yellowstone, frontier river of the west, as seen rising among its mountains near Gardiner Gateway of Yellowstone Park.

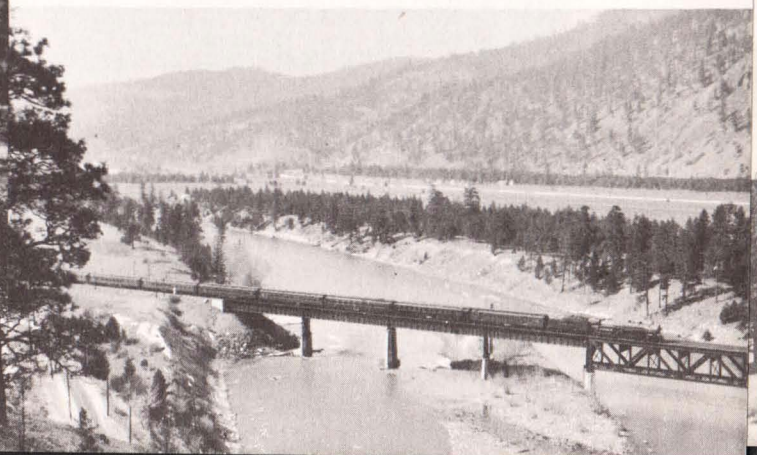


Sunset on the Clark Fork, an enchanting stream followed for miles through Montana mountain canyons.



Through Hellgate Canyon, along the Hellgate river, westbound trains enter Missoula, "Land of Sparkling Water", where six mighty mountain ranges meet.

The North Coast Limited crossing the Missoula river.



Gardiner Gateway

Magic Yellowstone

Right Along the Way

The Cody Road

On the way across the continent over the Northern Pacific Railway lies the nation's wonderland, Yellowstone National Park, Wyoming, so astonishing that people come from all over the world to see it. Yellowstone is open annually from June to September. Many include the park on their transcontinental rail trip at little or no extra rail fare. They enter one of three gateways: Gardiner, Mont., Red Lodge, Mont., or Cody, Wyo., and usually leave by a different gateway to obtain the maximum of sightseeing. Newest is the Red Lodge Gateway, reached by a sensationally scenic trip over the Beartooth range of the Rockies, which attains an elevation of nearly 11,000 feet — literally "On Top of the World!" For Yellowstone travelers we recommend going in Red Lodge and out Gardiner or Cody Gateways. Another interesting trip is one way via Bozeman, Montana, and the attractive Gallatin Canyon road. Through daily Pullmans on the North Coast Limited serve Gardiner, Cody, Red Lodge and Bozeman gateways during the park season.

Signal of strange wonders ahead, this blood-red streak of rock known as Devil's Slide is seen on Cinnabar Mountain when approaching Gardiner.

Shoshone Dam, 328 feet high, holds back the mountain waters for irrigation and is a man-made wonder along the Cody Road. (© Lucier.)

Red Lodge Gateway

For more than 50 years sightseers have entered Yellowstone through Gardiner Gateway, spanned since 1903 by a picturesque arch dedicated by President Theodore Roosevelt.

Quarrying Yellowstone travertine near the park at Gardiner, Montana. The colorful decorative stone from these quarries, formed by prehistoric hot springs, has been found to surpass imported travertine and now provides an American source of supply. The terraces of Mammoth Hot Springs are in reality travertine in the making.

Exquisite, tinted terraces of Mammoth Hot Springs are the first major wonder seen on the tour entering Gardiner Gateway.

Winding around and over the rugged Beartooth mountains, the new Red Lodge HIGH ROAD enters Yellowstone at this lovely portal, called Silver Gate.

Golden Gate Canyon between Bunsen Peak and Terrace Mountain, nine miles from Gardiner, is an alluring invitation to the scenes beyond.

Old Faithful's dependable hourly displays make it a sightseers' certainty and the world's best known geyser.

The Grand Canyon of the Yellowstone, to which no picture can do justice, is the golden gorge which gives the park its name and the powerful climax of the Park tour.

Old Faithful Inn, original pattern of all rustic park hotels, shelters visitors from every part of the world under its hospitable roof.

Yellowstone Lake, wild and peaceful, is none the less wonderful, being 7,700 feet above sea level. Beyond is Colter Peak named for John Colter, discoverer of the park in 1807. (© Haynes.)

Stupendous Shoshone Gorge contributes five of Cody Road's ninety thrilling miles.

An obliging and very proper bruin shows how the well-behaved Yellowstone bear will eat this year.

"Dear me", says Whitetail, "this is a surprise! But I'm surely glad to see you."

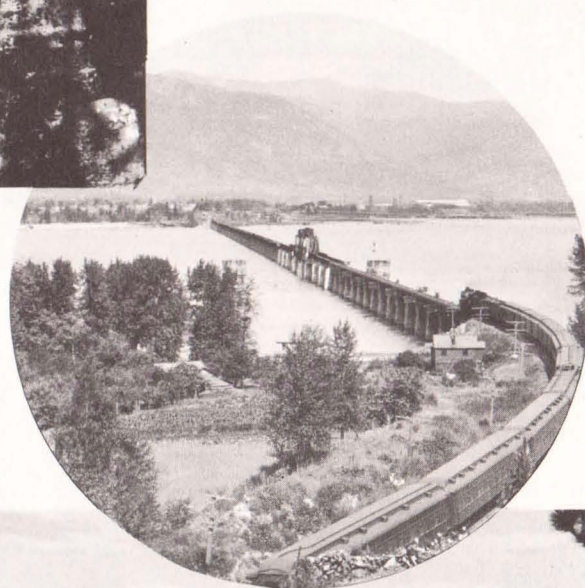
Monarchs of their kind are the Yellowstone bison which roam the Lamar Valley. (© Haynes.)



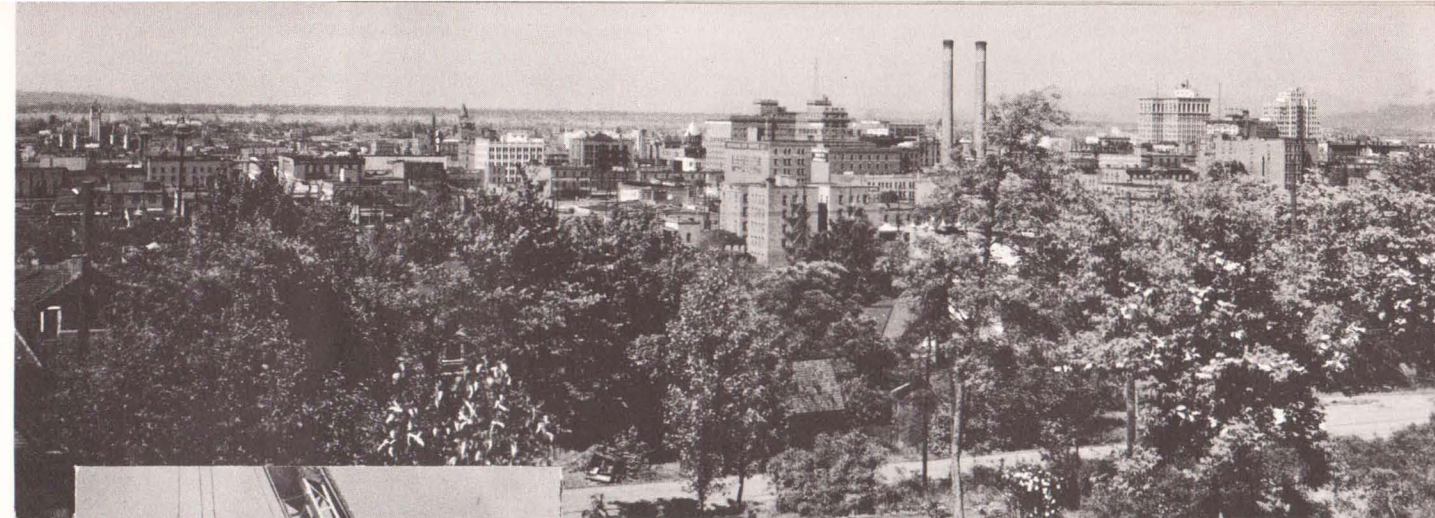
A train window picture of Cabinet Gorge where the Clark Fork river hews its way out of the Cabinet Range of the Rockies.

Scenic Northern Idaho

Along the swift Clark Fork River the Idaho-Montana boundary is crossed. Idaho is Indian for "Gem of the Mountains". Its state flower is the lovely mountain syringa. Forests of white pine come into view and numerous lakes mirror the stately evergreen forests and surrounding mountains. Large lumbering enterprises are the chief industry of this portion of what is known as the "Inland Empire" and of which Spokane is the metropolis. Fur traders, prospectors, missionaries to the Indians, the coming of the railway and the development of mining and lumbering industries are linked in the story of the region.



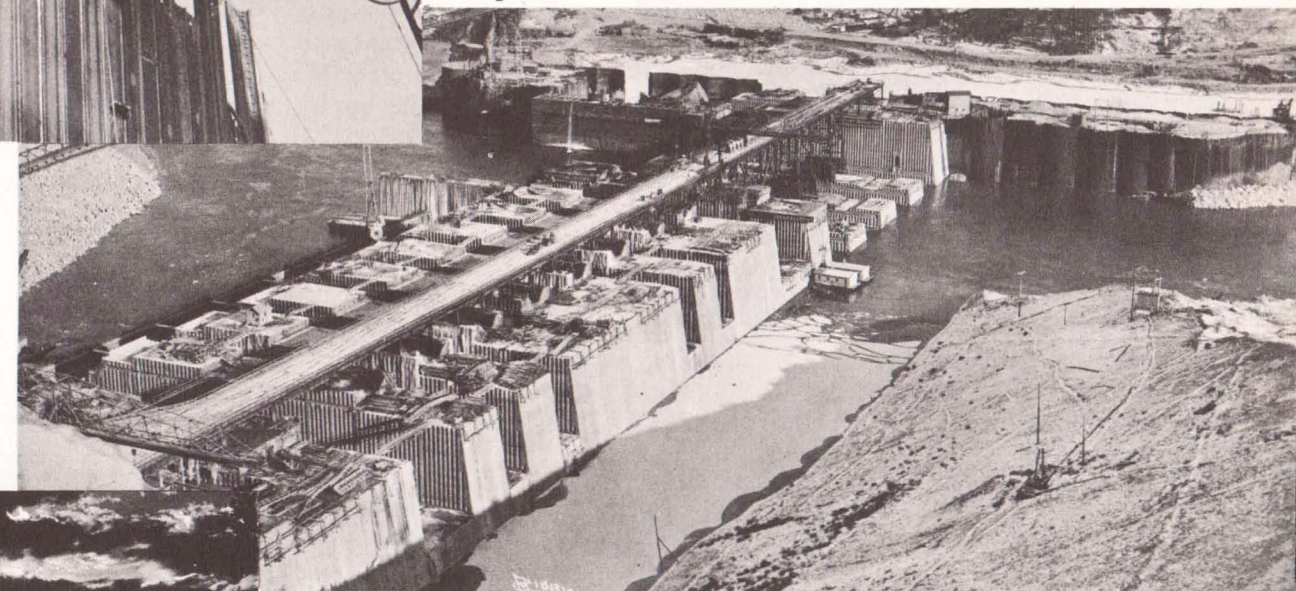
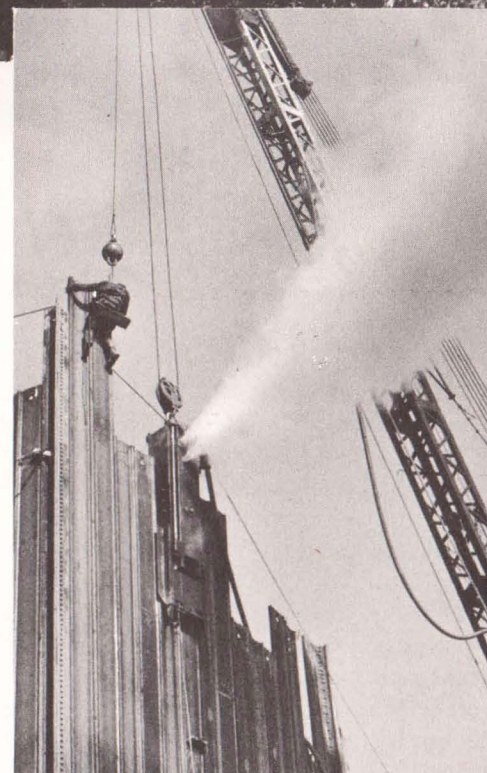
Lake Pend Oreille, an arm of which the trains cross on a long viaduct, is the largest of northern Idaho's chain of beautiful lakes.



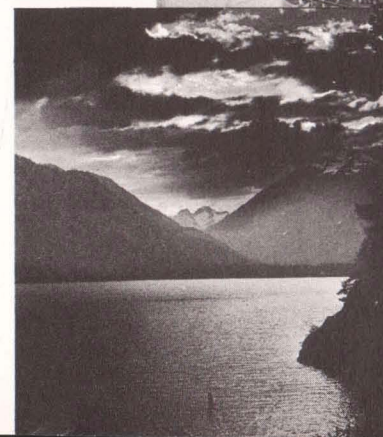
Where the resources of mountains, valleys and the upper Columbia Basin meet, there stands Spokane.

Inland Empire

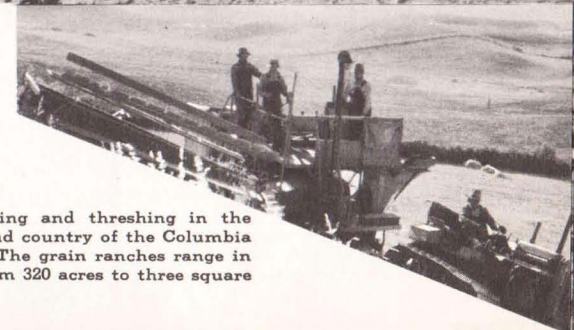
Spokane, mistress of orchards, forests, mines, ranches and waterpower, reigns as Queen City of her Inland Empire. Many activities relating to the construction of the mammoth Grand Coulee dam on the Columbia River in eastern Washington center here. Besides being the largest city between Minneapolis and the Pacific Coast, Spokane is vacation headquarters of a primitive mountain country containing 76 lakes within 50 miles of the city. Boating, swimming, fishing, big game and bird hunting, and mountaineering are native sports.



Here the immense Grand Coulee dam will impound the swift-flowing Columbia, greatest power stream in the United States. Inset above—Erecting the giant steel cofferdam to divert the river during construction.



Besides the 76 lakes near the city, 300 more lie within easy reach by train or auto.



Harvesting and threshing in the Big Bend country of the Columbia Basin. The grain ranches range in size from 320 acres to three square miles.



Thrifty country homes nestle numerous in the regular pattern of orchards and fields.

Yakima Valley

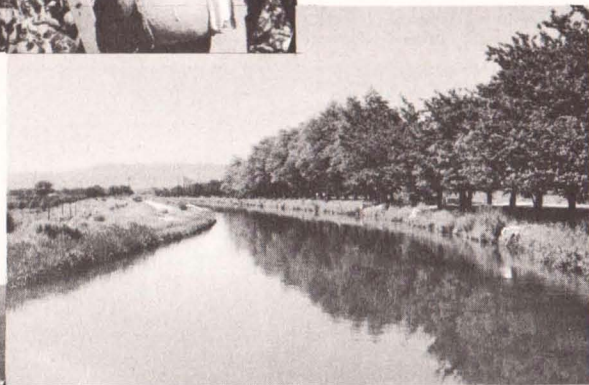
Halfway between Spokane and Seattle, the Yakima Valley of Washington spreads its great orchard plaids between purpled ridges. Irrigation waves its magic wand over the fertile volcanic soil thrown upon the region ages ago by Mount Rainier, once America's mightiest volcano, and orchards and gardens leap to color. The valley is one of the most thickly populated agricultural localities in the West and one of the most bountiful in the nation. Apples, pears, peaches, prunes, cherries, apricots, plums, berries, vegetables, and melons in profusion are produced, in addition to other farm crops. Livestock ranches, mines and lumbermills border the valley.

Yakima is Indian for "black bear". The name is applied not only to the valley but to the river which waters it and to the city of Yakima, one of the country's greatest fruit shipping centers.

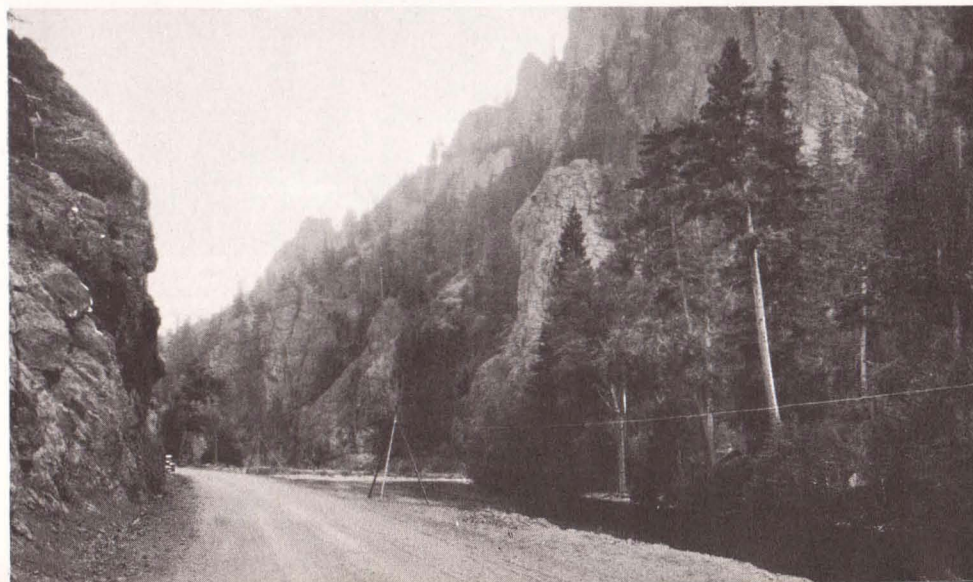
On Yakima's "royal road to Rainier", one of the most spectacular mountain drives in America.

Some Yakima products. From early summer to mid-autumn it is fruit picking time in the valley.

Glistening canals and flumes guide the snow water of the mountains to the productive soil.



Will you have your asparagus tips creamed or with butter? They'll be along directly from the cannery.

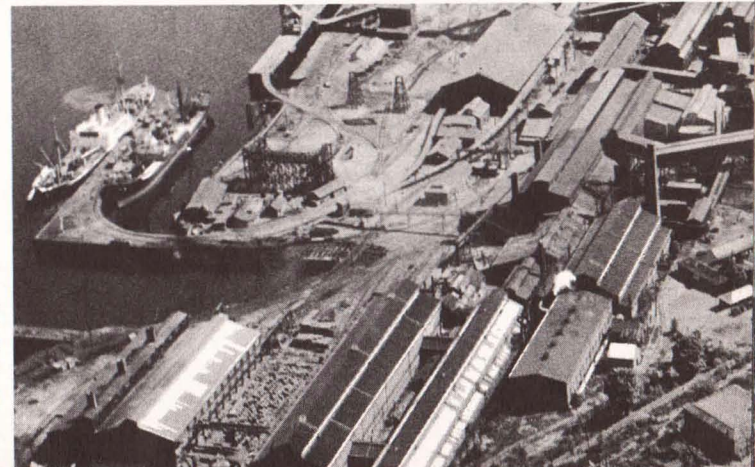
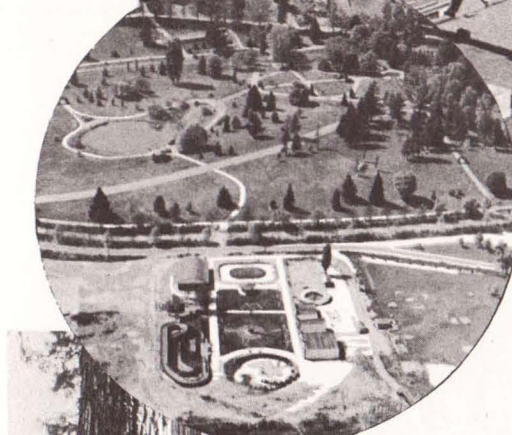


Tacoma -

"Only God can make a tree" and it is trees that make Tacoma the lumber capital of the United States. Tacoma is one of the Pacific Coast terminal cities of the Northern Pacific and commands its world port on Commencement Bay of Puget Sound, the western entrance to Rainier National Park and the eastern gateway to the Olympic Wilderness of the Washington Coast. In the city rise mills and factories and about it spreads an eden of orchards, vegetables, shrubs, bulbs and flowers. Rare plants and shrubs of both hemispheres are cultivated in the mild climate. The city contains the largest group of forest products industries in the United States. Behind it towers The Mountain.

It is not even necessary to go out of the city to see some of the giant trees of the big timber country. Those shown here grow in 640-acre Point Defiance Park where Tacoma plays.

A bit of the 14-mile waterfront on which is also located the huge Tacoma smelter, refinery for ore from Canada, South America and Alaska and gold from Russia.

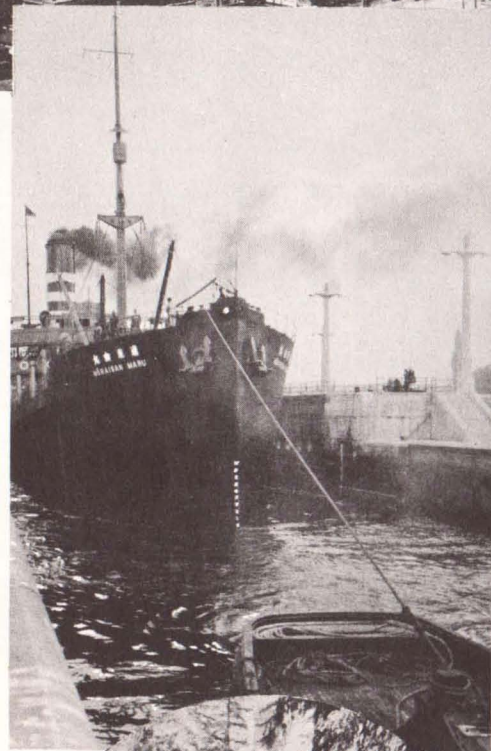




The City, grown to a commercial giant in one generation, faces Elliott Bay and the Olympic Mountains beyond.

Seattle - Door to the Pacific

Down over the Cascade Mountains, Northern Pacific trains descend into a realm of flowers and holly, green forests, white mountains, foaming streams and blue ocean. Its metropolis is Seattle, nearest United States port to the Orient and Alaska, where East and West, Far North and Trans-Pacific blend in a setting of never-ending beauty and interest.



An "Oriental visitor" passing through the locks which connect the city's saltwater harbor with anchorage in nearby fresh water lakes.



One of Seattle's charms — homes embowered in foliage and flowers.



A January scene on Seattle golf links which can be duplicated every month of the year.

Library, University of Washington, largest university in the Northwest.

Two hundred miles of waterfront harbor ships from every sea.



Alaska - Land of the Midnight Sun

Steering toward the north star from the Pacific Northwest, a mountain-walled voyage over the smooth Inside Passage leads to Alaska, "America's last frontier". World travelers declare this cruise one of the most unusual on the globe. Quaint villages, native Indian settlements, modern small cities, gigantic blue glaciers, peaceful forests, mighty mountains, streams and waterfalls, appear in the panorama viewed amazingly from steamer chairs or observation rooms. Alaska cruises are made at moderate cost in as little as seven to nine days' time, round trip from Seattle.

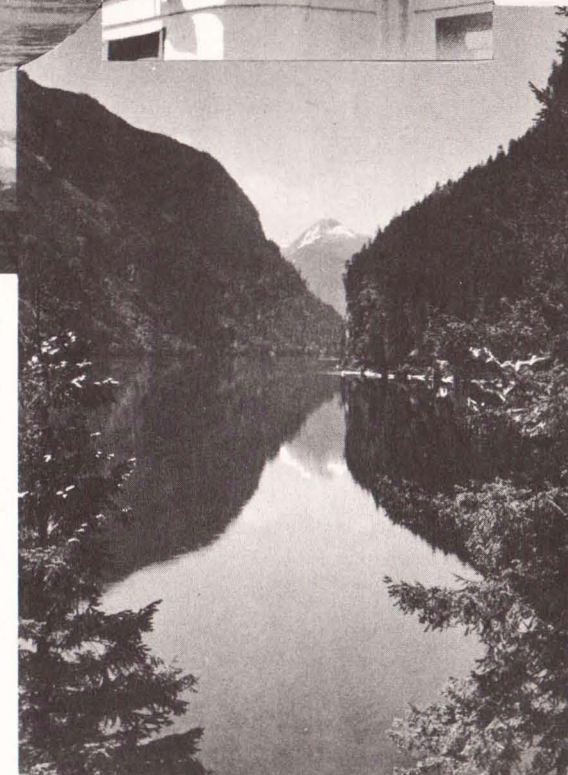


Fairweather Range, one of many ranges along the cruise, lifts its summit three and one-half miles above the sea.

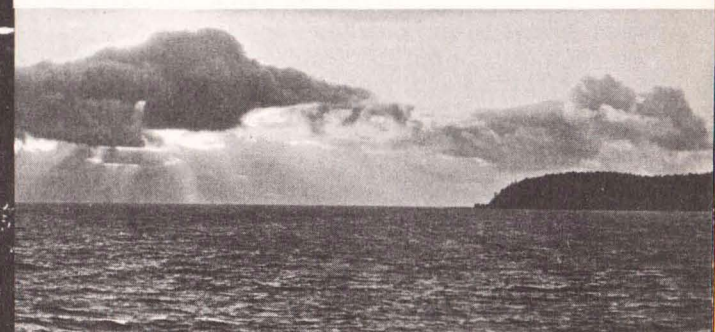


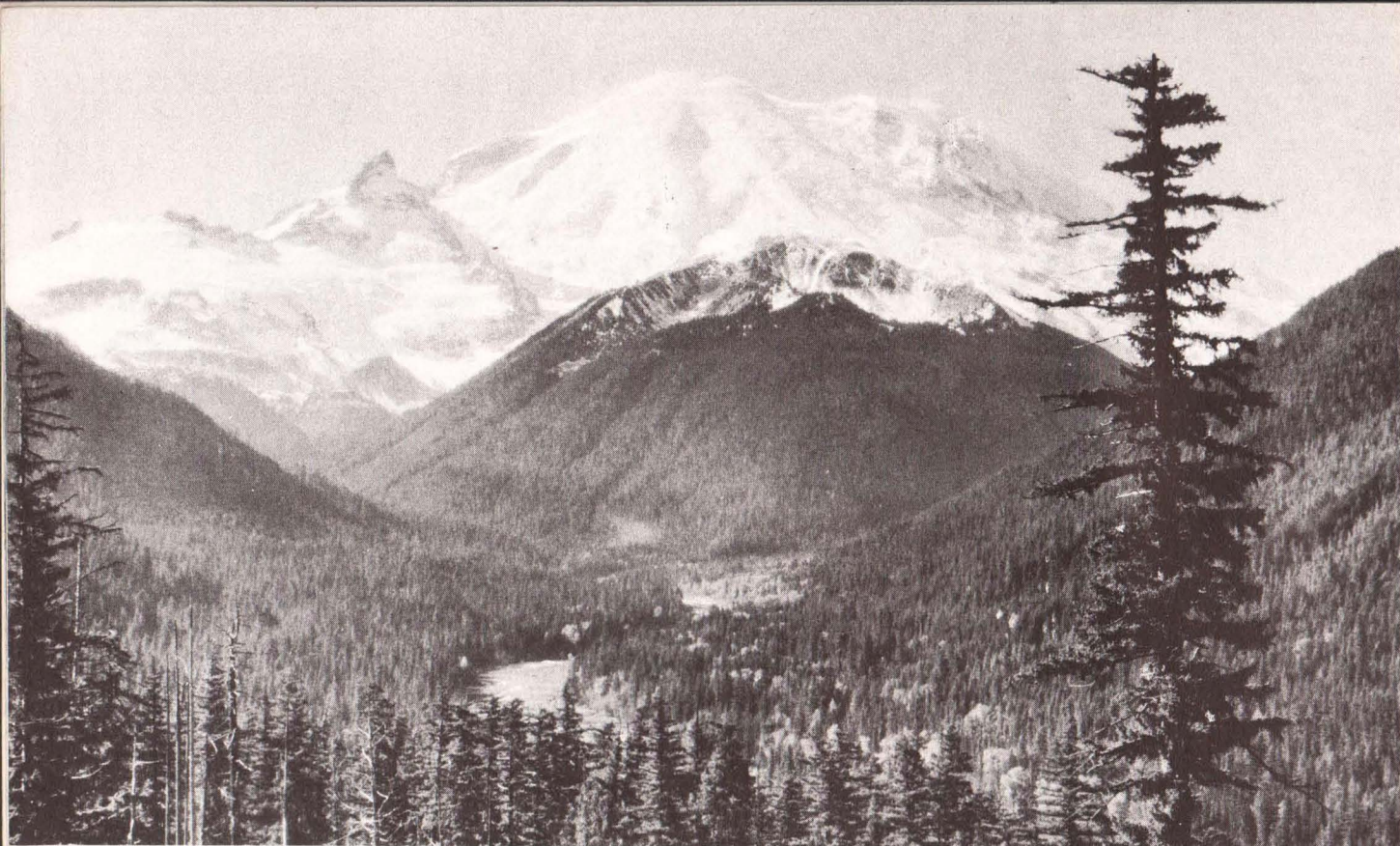
Native totems like this one tell the romantic story of their people.

Mt. McKinley, Alaska, our farthest north national park, towers 20,300 feet, highest peak in North America.



Ahead the gorgeous Inside Passage opens a mirror aisle while Alaska sightseers claim their treasure—the beauty of land and water and Midnight Sun.





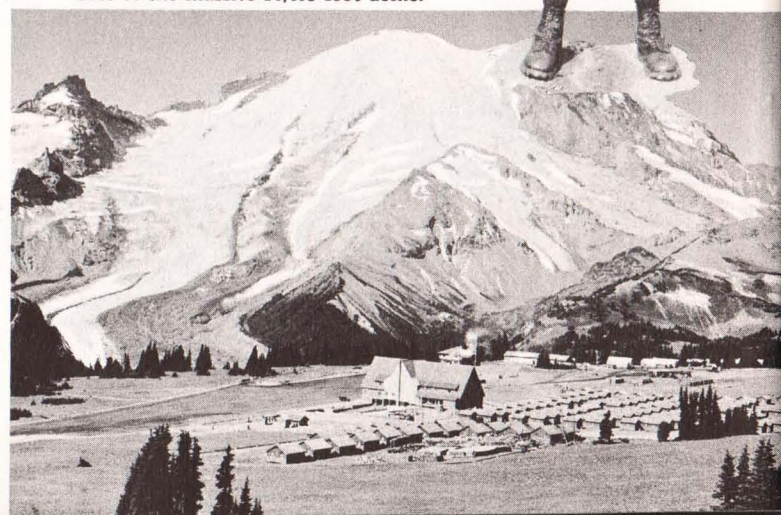
Mount Rainier, Washington, king of the Cascades and "America's noblest peak", attracts a quarter million persons annually to its mighty playground.



Slick for summer — parafined pants are worn as toboggans while people elsewhere swelter.

Hospitable Mountaineer headquarters on the west side of the mountain—Paradise Inn, modern chalet, in Paradise Valley. Right—Typical mountain guide.

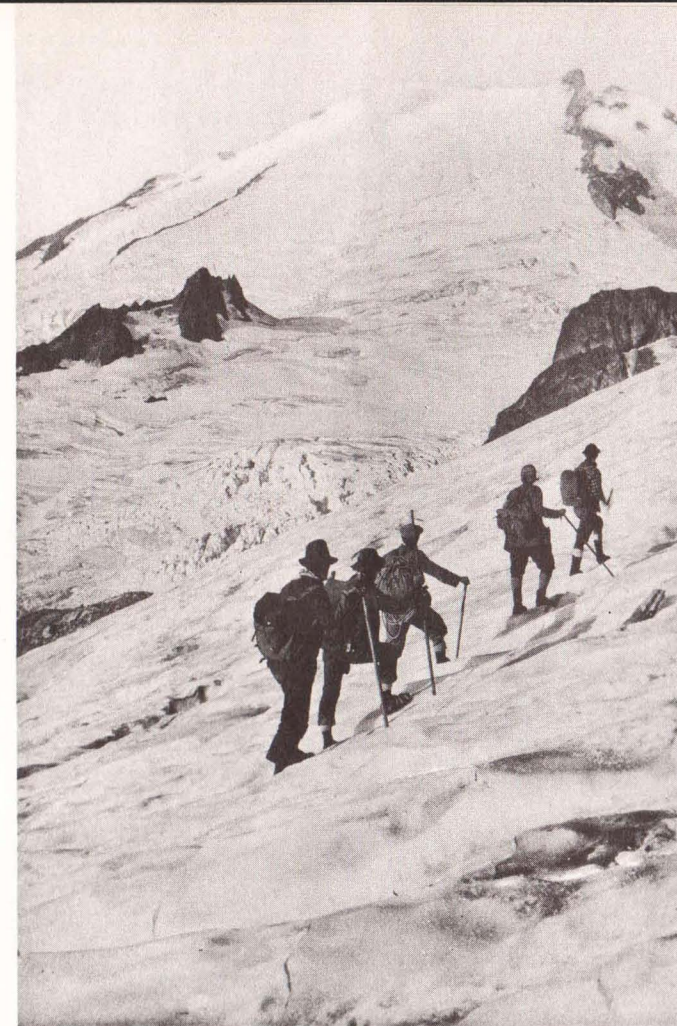
Below—First to greet the sun is Sunrise Lodge, reached from Yakima. There are over 200 rustic guest cottages at the eastern base of the massive 14,408-foot dome.



The Mountain That Was God!

Northern Pacific travel west-bound or eastbound now includes Rainier National Park by means of the spectacular "Rainier Detour" between Yakima and Seattle. Yakima is the eastern gateway to the park, Tacoma and Seattle the western gateways.

Long before white people began to enjoy the summer alpine sports and year-around hospitality of the mountain, the Indian tribes worshipped its great white form and, recalling the time when it was an angry volcano, gave it the majestic title, "Tahoma—the mountain that was God".



Mount Baker

To the north of Seattle rises another alpine attraction of the Pacific Northwest, Mt. Baker, Washington, to which Uncle Sam turned when he sought a National Recreation Area with outstanding scenery and opportunity for varied sports. The Indians called Mt. Baker, "The Great White Watcher". It and its nine attendant peaks, glaciers, lakes, streams, forests, wild creatures, riding trails and cozy chalets are reached from Bellingham, Washington.



Olympic Wilderness

As far west as it is possible to go in the Northern Pacific country, vacation explorers reach the untamed Olympic Wilderness of high mountains, gigantic forests, quiet lakes and crashing streams. Four times as large as Rhode Island, the Olympic Peninsula lies west of Tacoma and Seattle and north of Aberdeen and Hoquiam, Washington.



A giant of the Olympic Forest, one of the finest remaining timber stands on the western hemisphere.

Riders on the Forest Service trails follow paths made by deer and elk.



Stark grandeur of the high Olympic Mountains stirs the souls of mountaineers.

Furious, fighting trout and salmon inhabit the lakes and streams, fed by rain and snow water from the peaks.





Portland— The Rose City

"For You a Rose in Portland Grows", is the slogan of the "City of Roses" which greets a multitude of visitors at its renowned annual Rose Festival in June and throughout the year. Snow-spined Mount Hood, watching over the city and the surrounding fruitful valleys, is the "goal post" for vacation travelers as it formerly was for covered wagon trains in pioneer days. Drives lead from the city around the mountain and over the famous Columbia River Highway.



Metropolis of Oregon, Portland spreads its panoramic beauty for miles over fir-dotted valleys and plateaus while white-capped peaks overlook the scene. (© Sawyer.)



Flowers, vines, shrubs and trees entwine their charm around Portland homes. The city's rose bushes number two million.



One of the nine bridges which span the Willamette River within the corporate limits of the city.

Ships of the world work cargo at the city's 30-mile waterfront on the fresh-water Willamette, 100 miles from the open sea.

Columbia River— Pacific Beaches

Favored among the varied charms of the Pacific Northwest where every visitor finds his choice are the smooth, uncrowded beaches of Washington and Oregon and the remarkable Columbia River of which Bryant today would write: "Where rolls the Oregon and hears no sound save his own dashings or roar of machinery erecting two mighty dams". Both states share river and beach attractions located at or near Northern Pacific coast terminals.

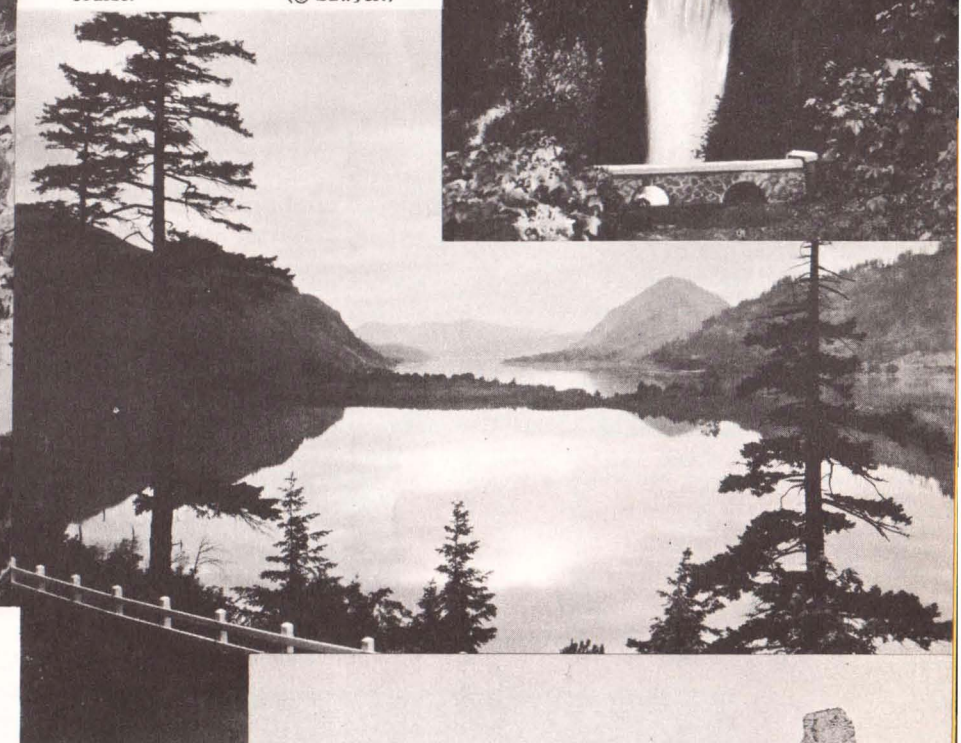


Aerial bird's eye view of \$32,000,000 Bonneville Dam under construction 42 miles east of Portland and visible from train windows at North Bonneville, Washington. (© Brubaker Aerial Surveys.)

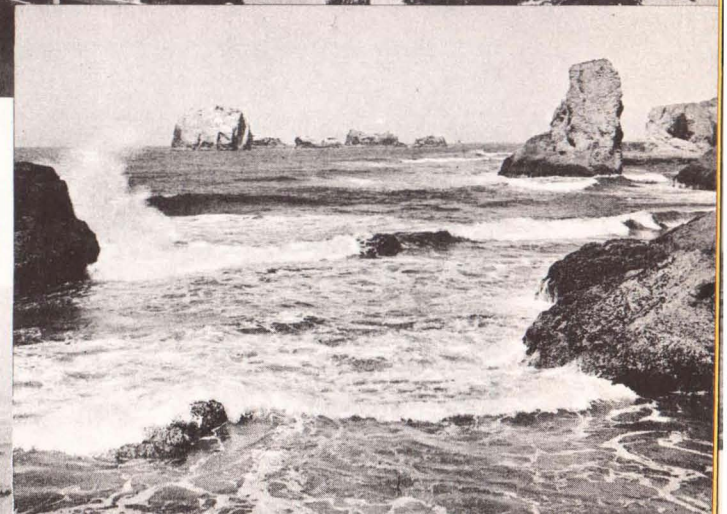
Far-famed Multnomah Falls, second highest in the United States, plunge 620 feet and are one of eleven exquisite falls along the upper Columbia River Highway.



The mountainous Columbia, seen from the highway near Portland as it pierces one of three ranges in its course. (© Sawyer.)



Miles of tightly-packed sand and rockbound shore fringe Oregon and Washington with a picturesque coast where shore sports are only a short distance from mountain and forest recreations.



Over Puget Sound To British Columbia

First Canadian port of call beyond Seattle is the world harbor of Victoria, British Columbia capital on Vancouver Island, "England of the Pacific Coast" and one-third as large as Old England.



One of the sights of Victoria is the Butchart Gardens, open by courtesy to visitors the year around.



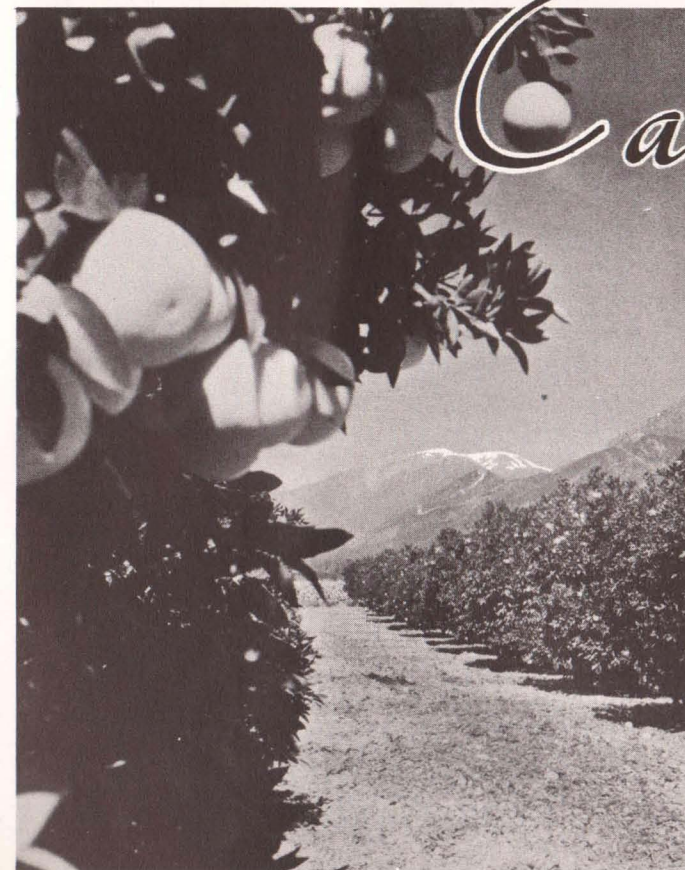
Haven of summer delight near Vancouver is Horseshoe Bay, favored for deep-sea salmon fishing.



Vancouver, British Columbia, presents this majestic aspect as Pacific Gateway of the British Empire.

San Juan Islands

Washington's sun-peopled island domain, between the mainland and Vancouver Island, unites wild splendor of the Inside Passage and guardian Mt. Baker and makes every camper king. Right — A giant salmon caught off Orcas Island.



When King Winter reigns in southern California, folks put on a

California

Travelers should plan to go to or return from California by way of the scenic Northern Pacific Coast country. By all means, see all the Pacific Coast. It is well worth your time. Via Seattle and Portland on the air-conditioned North Coast Limited, brings you travel at its best. Oregon and Northern California by train are spectacularly interesting—or, if you prefer an ocean voyage along the Pacific coast on a luxurious liner, you can be well served between Seattle and Los Angeles.



GOING ANYWHERE?

All Northern Pacific Offices are equipped to supply authoritative information concerning travel either for business or pleasure. They will be glad to answer your questions and assist in planning your trip. You are invited to make use of this service, without any obligation on your part.

If you are unable to call at any of the offices listed on the reverse side of this sheet, your letter or this card, addressed to the nearest Northern Pacific office, or to E. E. Nelson, Passenger Traffic Manager, Northern Pacific Railway, St. Paul, Minn. will receive prompt attention.

Mail the Card
for Detailed
Information
Desired

Please send me more detailed information and additional literature about trip (or trips) to

(Indicate information desired)

I plan to leave about (Date when you wish to leave home)

Dear Northern Pacific:

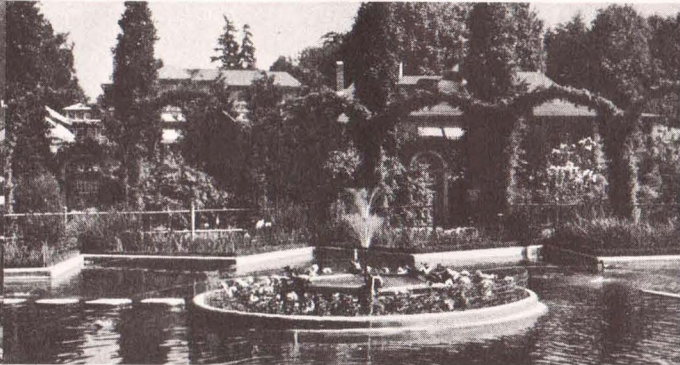


Name.....
Address.....
City..... State..... Telephone.....

Over Puget Sound To British Columbia



First Canadian port of call beyond Seattle is the world harbor of Victoria, British Columbia capital on Vancouver Island, "England of the Pacific Coast" and one-third as large as Old England.



One of the sights of Victoria is the Butchart Gardens, open by courtesy to visitors the year around.



It's Always a "Rate
Day in June" on the
Air-Conditioned
North Coast Limited.

Northern Pacific Traffic Offices are Conveniently Located in the Following Cities:

BOSTON.....236 Old South Bldg.	MINNEAPOLIS.....701 Marquette Ave.
BUFFALO.....716 Ellicott Square	NEW YORK.....560 Fifth Avenue
BUTTE.....405 Metals Bank Bldg.	PHILADELPHIA 926 Fidelity-Phila. Bldg.
CHICAGO.....73 East Jackson Blvd.	PITTSBURGH.....608 Park Bldg.
CINCINNATI.....615 Gwynne Bldg.	PORTLAND...707 American Bank Bldg.
CLEVELAND....1334 Terminal Tower	ST. LOUIS.....440 Boatmen's Bank
DALLAS.....901 S. W. Life Building	ST. PAUL.....333 Robert St.
DES MOINES...328 Des Moines Bldg.	SAN FRANCISCO....657 Market St.
DETROIT.....1006 Transportation Bldg.	SEATTLE.....1409 Fourth Ave.
DULUTH.....334 W. Superior St.	SPOKANE.....701 Sprague Ave.
FARGO.....N. P. Station	TACOMA.....118 S. Ninth St.
HELENA.....Placer Hotel	VANCOUVER.....678 Howe St.
KANSAS CITY.116 Railway Exch. Bldg.	VICTORIA.....912 Government St.
LOS ANGELES....506 Central Bldg.	WINNIPEG.....204 Paris Bldg.
MILWAUKEE....1418 Majestic Bldg.	YAKIMA.....N. P. Station

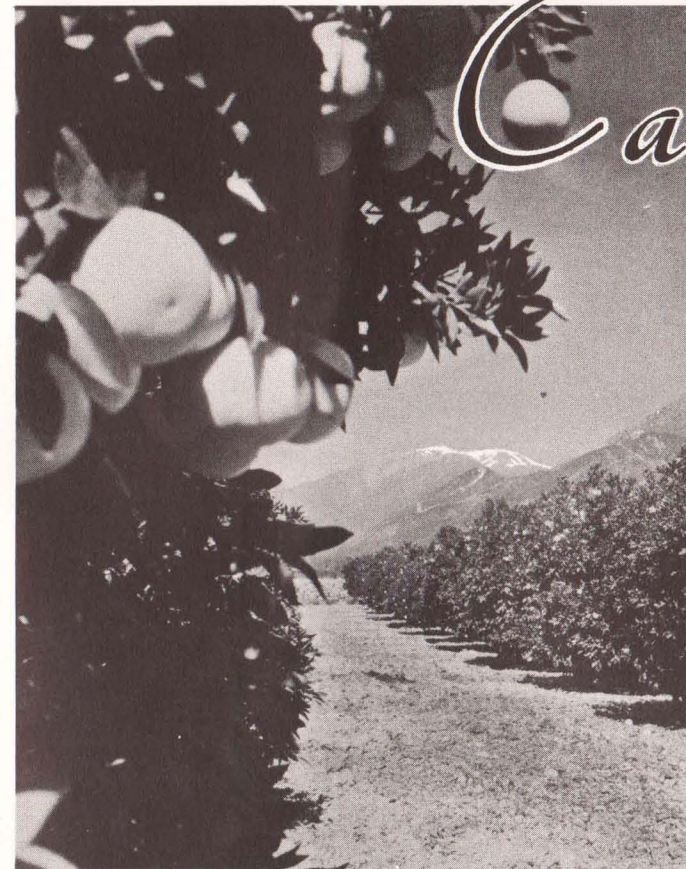


If you wish more detailed information and additional literature on specific resorts or cities mentioned in this booklet, please mail this card to your nearest Northern Pacific office (see listing above) or address,

E. E. NELSON, Passenger Traffic Manager, NORTHERN PACIFIC
RAILWAY - Saint Paul, Minnesota

ONE
CENT
STAMP
HERE

California



When King Winter reigns in southern California, folks put on a coat of tan, oranges nod in the valleys and only the mountain peaks observe the calendar.

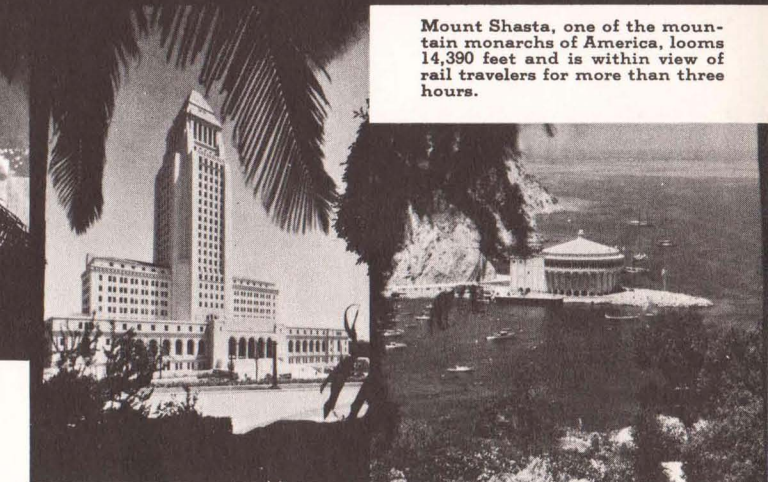
Travelers should plan to go to or return from California by way of the scenic Northern Pacific Coast country. By all means, see all the Pacific Coast. It is well worth your time. Via Seattle and Portland on the air-conditioned North Coast Limited, brings you travel at its best. Oregon and Northern California by train are spectacularly interesting—or, if you prefer an ocean voyage along the Pacific coast on a luxurious liner, you can be well served between Seattle and Los Angeles.



Mount Shasta, one of the mountain monarchs of America, looms 14,390 feet and is within view of rail travelers for more than three hours.



Hollywood—America's new great white way—on a festive night, where the stars above shine down on the stars below.

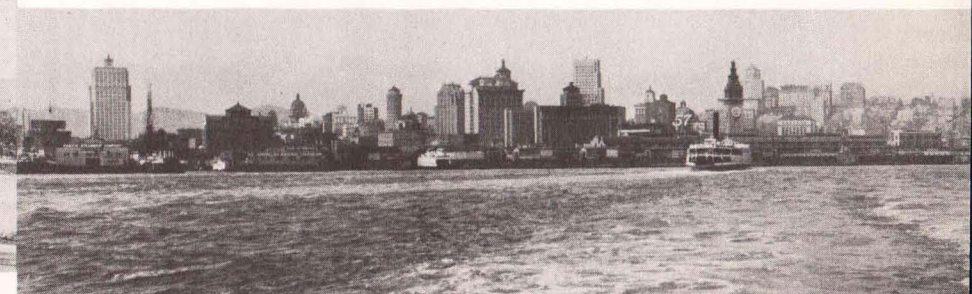


Los Angeles' new city hall in the city of "Queen of the Angels" commands views both of seaside and mountain resorts.

A glimpse of the famed Catalina, America's "Isle of Capri."



Like an Old World reverie in the busy realities of the New are the quaint California Missions, 22 in number. This is the Mission Santa Barbara.



Within the Golden Gate, plying ferries reveal this skyline view of San Francisco, a sight the visitor always remembers.