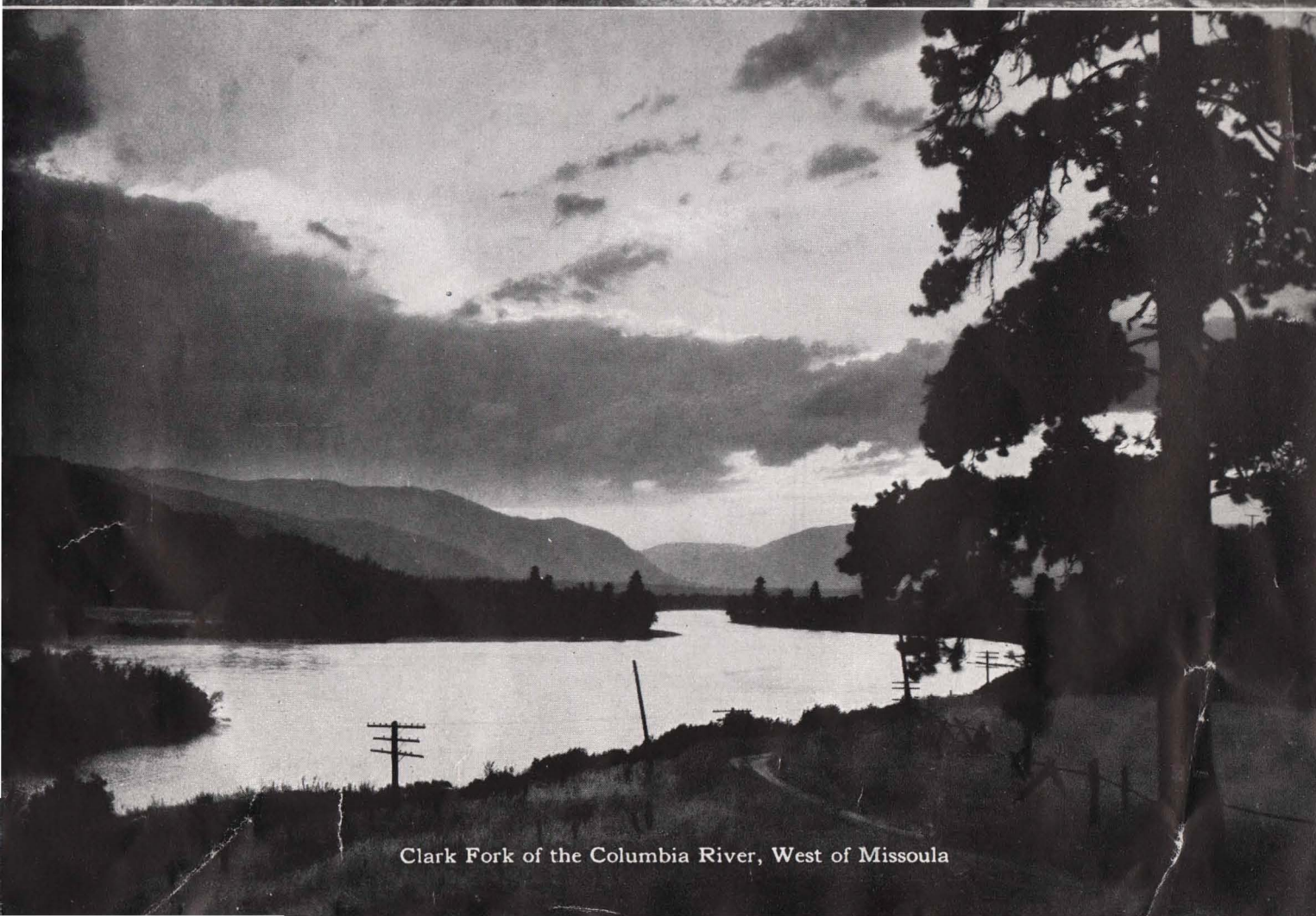


The Flathead Indian Country  
Mission Range Mountains in Distance



Clark Fork of the Columbia River, West of Missoula



"North Coast Limited" Climbing Bozeman Mountain

## 28 Ranges of Mountains

*Seen from Northern Pacific Trains*

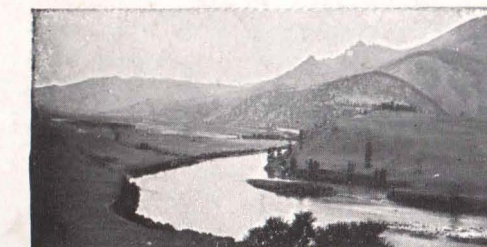
Chicago—St. Paul—Minneapolis—Duluth—Superior—Minnesota's  
10,000 Lakes Region—Fargo—Bismarck—"Roosevelt Park"  
(Dakota Bad Lands)—Billings—Yellowstone Park—Livingston  
—Bozeman—Helena—Butte—Missoula—Sand Point—Spokane  
—Yakima—Seattle—Tacoma—Portland—Vancouver—Victoria



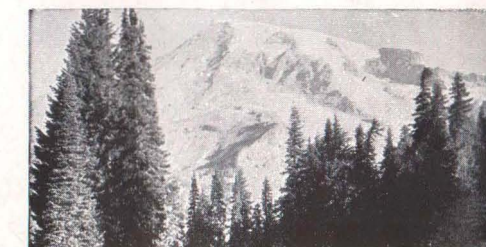
Mount Hood, among the most beautiful of the Cascade peaks, rises 11,225 feet above sea level, east of Portland, Oregon. "One sharp, angular peak and only one, a mammoth, natural, alabaster-like pyramid!" May be seen from Northern Pacific S. P. & S. trains on North Bank of Columbia River.



Mount St. Helens, visible between Napavine and Chehalis, is a 9,750-foot snow-covered picture mountain, famed throughout the Northwest for its beauty. Seen across Mirror Lake, it forms a memorable awe-inspiring picture.



The Beartooth Mountains, second range visible to the westbound Northern Pacific traveler, rises in rugged majesty to the southwest between Billings and Laurel, Montana. Here are the vacation playgrounds of many of Montana's celebrated "Dude" Ranches.



Mount Rainier, probably the best known of all the Cascade Range, rears its snowy crest up from the heart of Rainier National Park, surrounded by the Tatoosh and other ranges. It is 14,408 feet high and wears a tremendous greatcoat of many glaciers.



Mount Adams, 12,250 feet, is a snow-capped dome visible from the train between Napavine and Chehalis, Washington—one of the outstanding peaks of the Cascade range.



Mount Spokane, a massive rock hill overlooking the rugged country about Spokane, on the eastern edge of the Inland Empire, takes its name originally from the Spokane tribe of Indians, whose forefathers lived virtually under its shadow.

E. E. Nelson, Passenger Traffic Manager, St. Paul... Offices in Most of Principal Cities

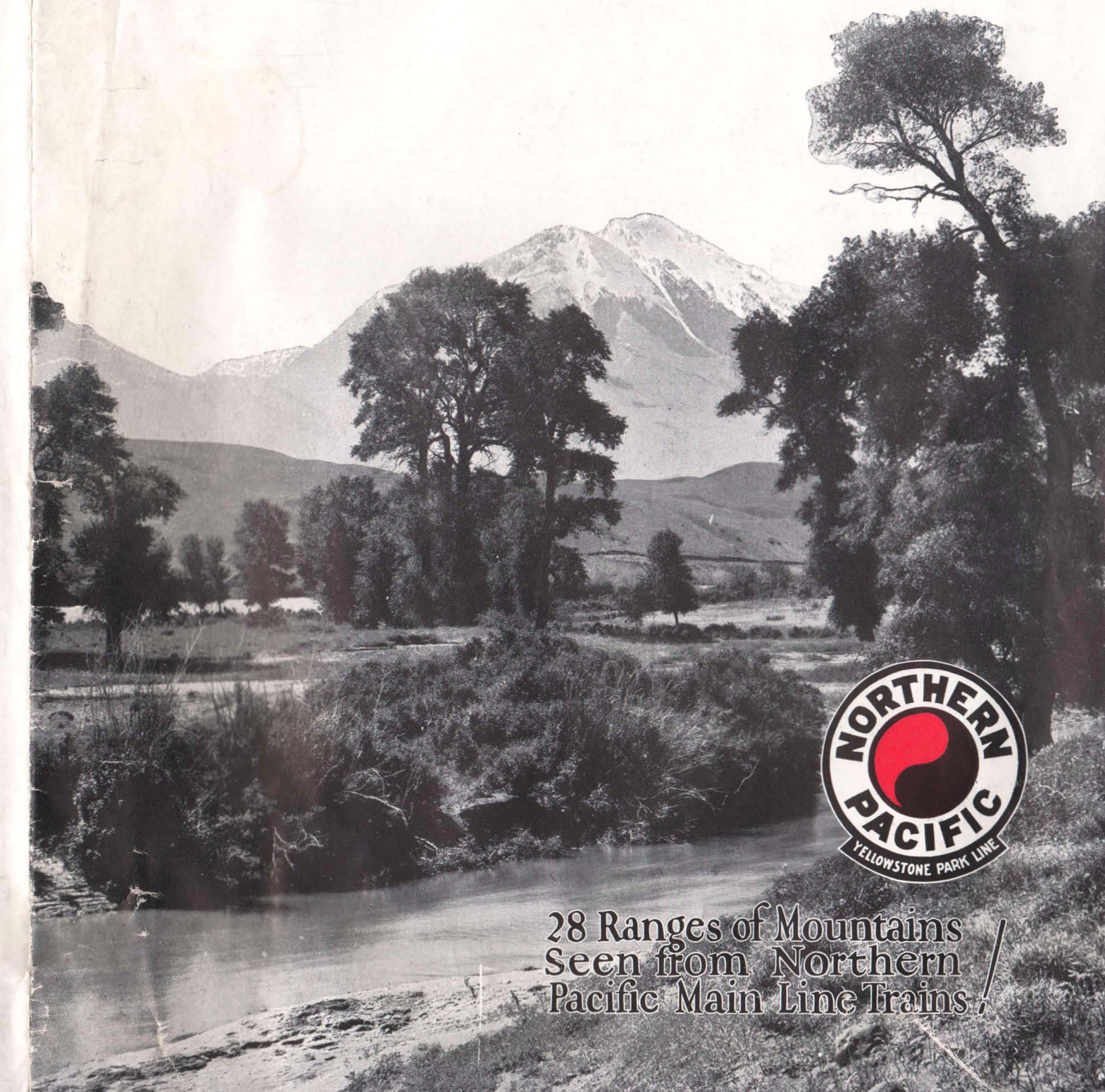
**North Coast Limited**

*Completely Air-Conditioned*



F6077A

*Through the American Rockies  
on the Northern Pacific*



28 Ranges of Mountains  
Seen from Northern  
Pacific Main Line Trains



## Count the Mountains!

SEE all the Northern Pacific mountains you can on your journey, for they are unsurpassed anywhere in the world! Twenty-eight ranges are visible from your train window—the same vast mountains that Lewis and Clark overcame, rich now in the lore of pioneer days in the Northwest, wearing the mantle of glamor that gold prospector, railroad builder, and “dude” rancher have put upon their mighty shoulders!

This is the “March of the Mountains” as it appears to the watchful westbound Northern Pacific traveler:

Wolf Range—South of Hysham, Montana.  
 Beartooth Range—Southwest of Billings.  
 Crazy Mountains—Reed Point to Mission, north.  
 Absaroka Range—South to Livingston.  
 Bridger Range—Bozeman to Belgrade, north.  
 Gallatin Range—Livingston to Bozeman, south.  
 Madison Range—Bozeman to Three Forks, southwest.  
 Tobacco Root Range—Sappington to Whitehall, south.  
 Gravelly Range—Whitehall to Homestake, south.  
 Snowcrest Range—West of Whitehall.  
 Continental Divide—Main Range of the Rockies, Whitehall to Silver Bow.  
 Bull Mountains—Whitehall to Pipestone Springs, north.  
 Highland Mountains—Seen from Butte, south.  
 Continental Divide—Seen from Helena and vicinity.  
 Big Belt Range—North of Townsend, Winston and Helena.  
 Elkhorn Range—Toston to Helena, south.  
 Anaconda Range—Butte to Garrison, west.  
 Flint Creek Range—Deer Lodge to Gold Creek, north.  
 Deer Lodge Mountains—Same as Flint Creek Range.  
 Garnet Range—Drummond to Bonner, north.  
 Sapphire Range—Drummond to Missoula, south.  
 Mission Range—Arlee to McDonald, northeast.  
 Couer d'Alene Mountains—Paradise to Thompson Falls, southwest.  
 Bitter Root Range—Thompson Falls to Lake Pend Oreille, south.  
 Cabinet Mountains—Paradise to Heron, north.  
 Selkirk Range—Oden to Rathdrum, northwest.  
 Cascade Mountains—Cle Elum to Auburn, east.  
 Olympics—Coast cities (clear weather).

*Twenty-eight Ranges of Them!*

Panorama of Rockies, From Continental Divide, Butte, Mont.  
 The Northern Pacific Crosses Nearby at 6,356-foot Elevation

(Homestake Pass)

McDonald Peak and Glacier  
 Colossus of the Mission Range of Mountains  
 Altitude 10,000 feet

Gates of the Mountains, Helena, Montana

Blue Lake in the Crazy Mountains of Montana.

PHOTO BY BROWN FOR NORTHERN PACIFIC RY

In the American Rockies Along the Northern Pacific Railway

Mount Helena, Near Helena, Montana

Through the Montana Rockies into Idaho