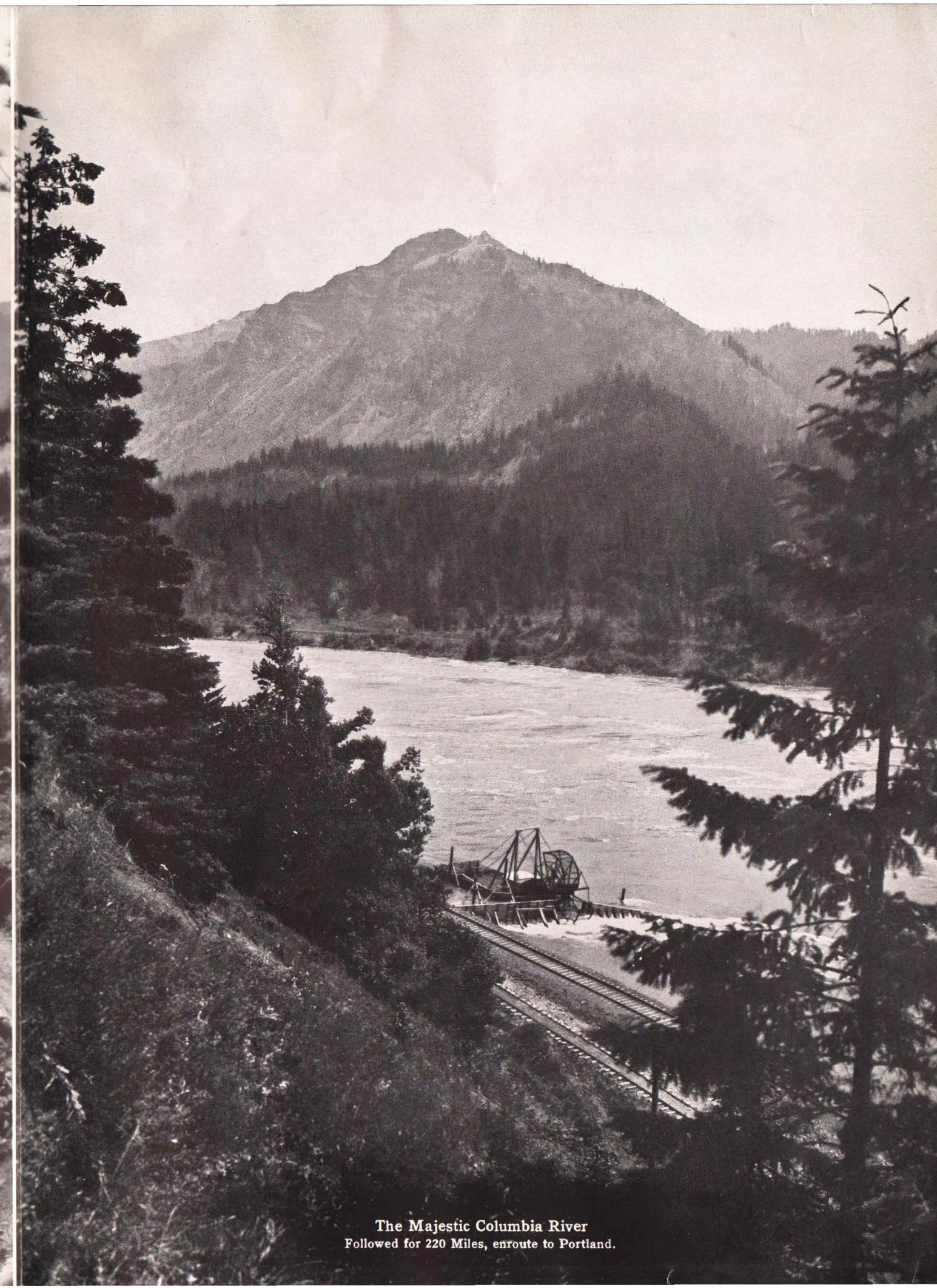




The Pend d'Oreille River, Idaho
Our trains cross Lake Pend d'Oreille on a mile-long viaduct.



The Majestic Columbia River
Followed for 220 Miles, enroute to Portland.

Northern Pacific Rivers

Pictures all the Way—Great Swift Waters—Forested Shores—
Rugged Bluffs—Cataracts—River Birds—Clear Ice-cold Mountain
Streams Plunging from the Woods—Deep Gorges—Bridges

1,406 Miles of Rivers, Chicago to Seattle

FOR 1,406 miles, two-thirds of the distance between Chicago and Seattle-Tacoma on the North Pacific Coast, the North Coast Limited of the Northern Pacific Railway travels along the banks of some of the most picturesque rivers in America. It is indeed a route of "startling beauty." Rivers of Minnesota, fed by 10,000 lakes; rivers of Dakota, through wheat fields and the colorful Bad Lands; rivers of Montana, across vast cattle ranches and into the Rockies; rivers of Idaho, with mountains climbing high overhead; rivers of Washington, which bring life to great orchards; and the *Columbia*, Oregon's own.

(After leaving the new Chicago Union Station on the C., B. & Q., the North Coast Limited follows the Mississippi River, "Father of Waters," for 383 miles; the historic Yellowstone is followed for 341 miles; the Missoula River, through the most impressive portion of Montana's "Shining Mountains," 106 miles; the Clark's Fork, from Montana into the lofty Idaho Rockies, 93 miles; and the Yakima River, through great, volcanic lava beds and contrasting, blossom-spread valleys in Washington, 141 miles.

(Travelers going direct from Spokane to Seattle, follow the Columbia River for 7 miles; if they go from Spokane to Portland, the Columbia is followed for 220 miles.

(Other streams which Northern Pacific main line trains follow, cross and re-cross, are:

Rum River	Tongue River
Elk River	Big Horn River
Little Rock River	Gallatin River
Platte River	Little Blackfoot River
Little Elk River	Madison River
Fish Trap River	Jefferson River
Long Prairie River	Boulder River
Wing River	Deer Lodge River
Leaf River	Hellgate River
Otter Tail River	Big Blackfoot River
North Branch of Buffalo River	St. Regis River
Red River of the North	Jocko River
Sheyenne River	Flathead River
Maple River	Thompson River
James River	Pack River
Pipestem River	Pend d'Oreille River and Lake
Missouri River	Spokane River
Heart River	Columbia River
Knife River	Natchez River
South branch of Heart River	Cle Elum River
Little Missouri River	Green River
Powder River	White River
	Black River

We invite you to follow the River Route when traveling between Chicago and the Pacific Coast.



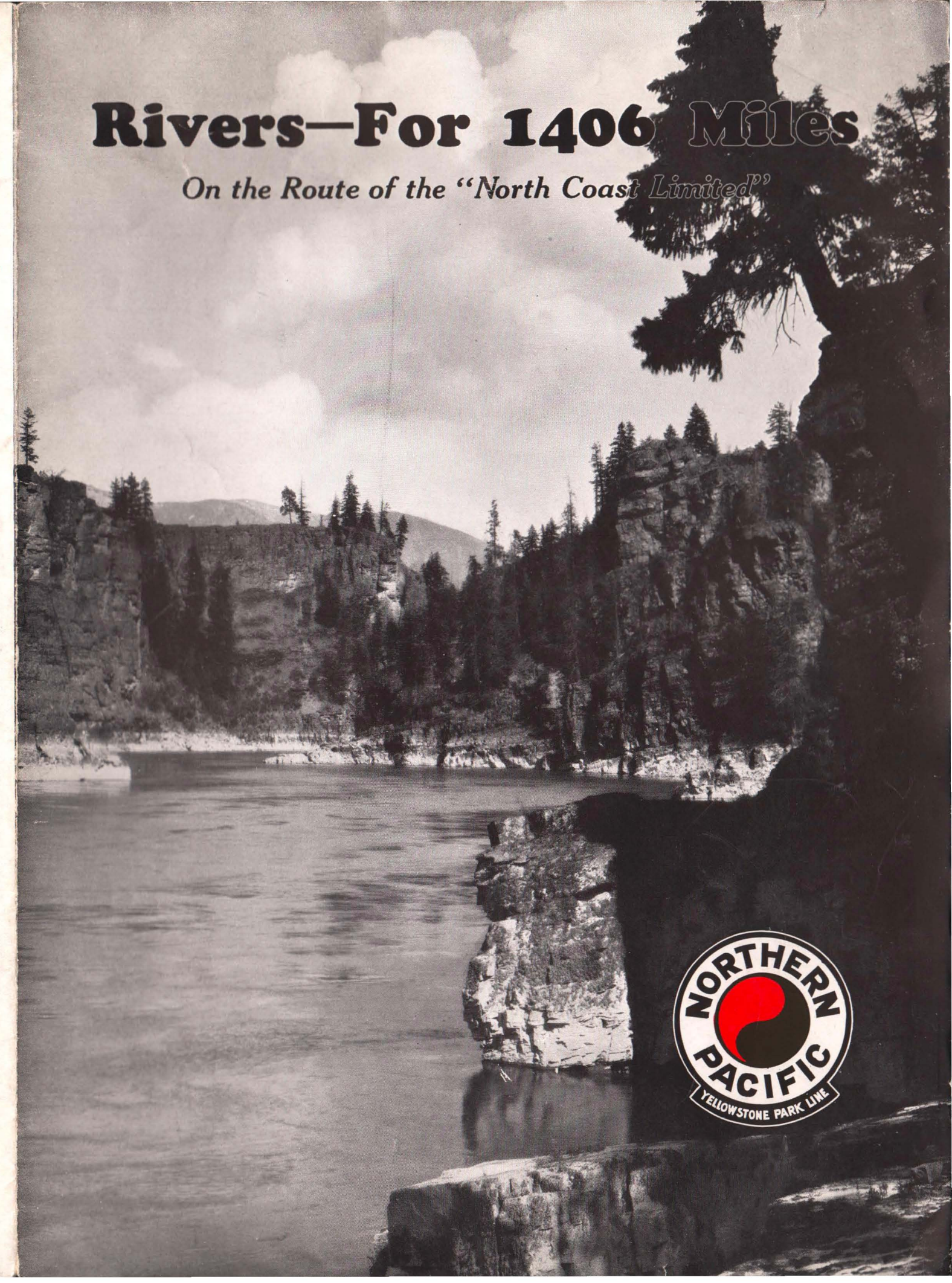
General
Passenger
Department
ST. PAUL, MINN.

Northern Pacific Railway
Route of the "North Coast Limited"

CHICAGO—ST. PAUL—MINNEAPOLIS—DULUTH—SUPERIOR—MINNESOTA'S 10,000 LAKES
—FARGO—BISMARCK—DAKOTA BAD LANDS ("Roosevelt Park")—BILLINGS—YELLOW-
STONE PARK—LIVINGSTON—BOZEMAN—HELENA—BUTTE—MISSOULA—SAND POINT
—SPOKANE—YAKIMA—SEATTLE—TACOMA—PORTLAND—VANCOUVER—VICTORIA.

Passenger
Offices in
Most Large
Cities

6077



Rivers—For 1406 Miles

On the Route of the "North Coast Limited"





The Mississippi near Savanna, Ill.
Along the "Father of Waters" for 383 Miles.



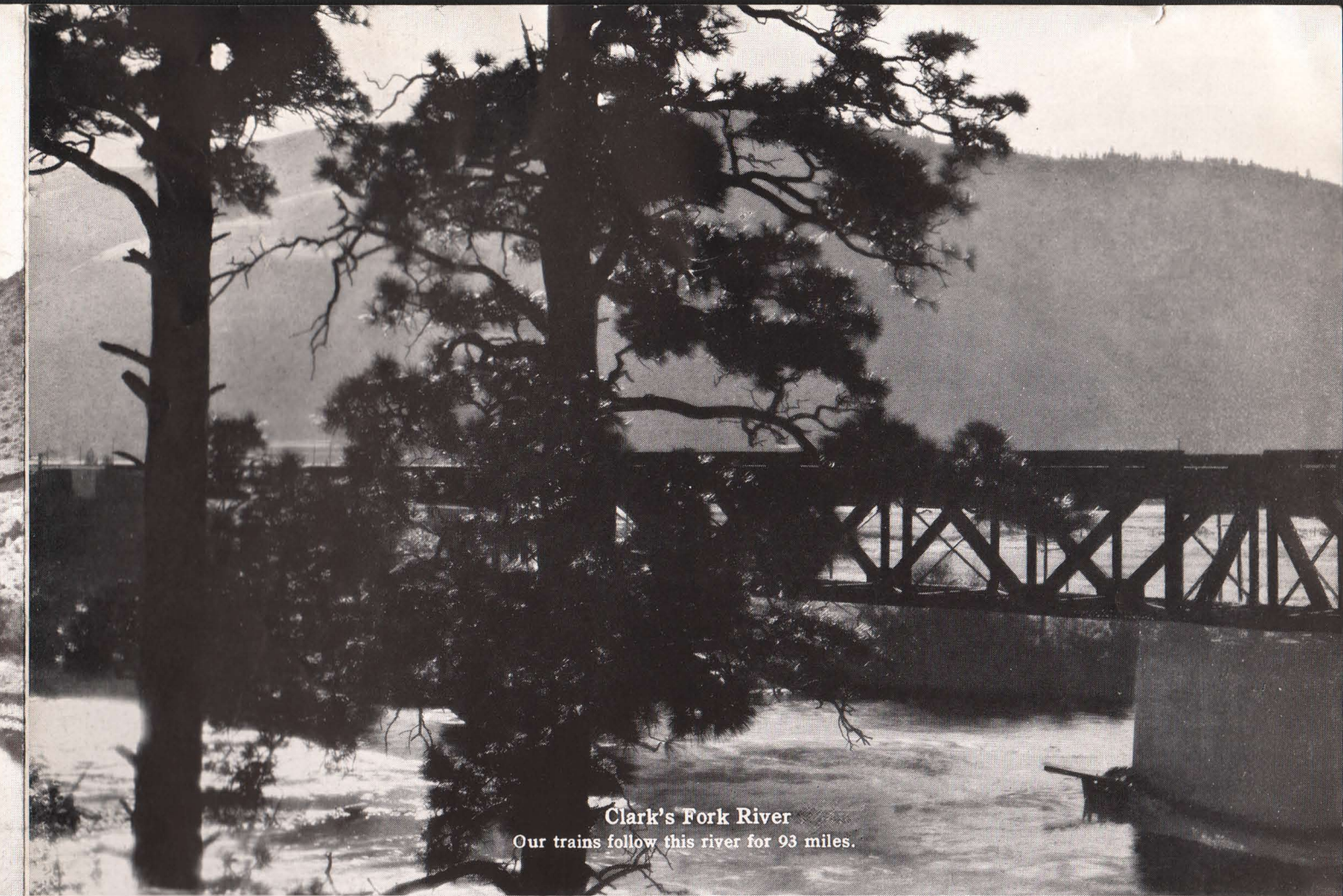
Picture Rock, Missouri River Canyon
We Follow the Missouri for 45 Miles.



Jefferson River and Canyon
32 Miles Along this Stream in Montana.



The Yellowstone River in Montana
341 Miles of Train-Window Pictures.



Clark's Fork River
Our trains follow this river for 93 miles.



Northern Pacific Train in the American Rockies
Showing one of the many fine accomplishments of our Engineering Department.