

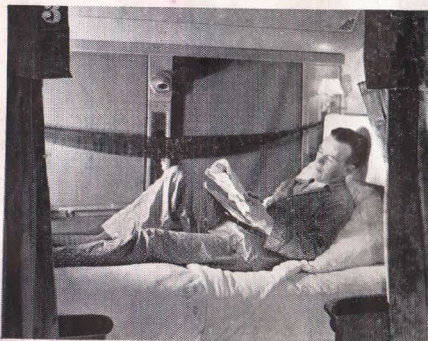
Dude Ranches



THE *North Coast* LIMITED



Let the Engineer Do Your Driving.



Your Vacation Begins When You Board the Train.



You'll Thoroughly Enjoy Northern Pacific Food.



The Spacious Lounge of the Observation Club Car.

EVERY section of the North Coast Limited in the summer carries ranch folks. It is the favorite train of "dudes" and ranchers alike. When you step aboard at Chicago Union Station in the evening, you are bound to feel at home—for there is sincere and hospitable western welcome on the North Coast Limited.

AIR-CONDITIONING helps to make travelers mighty comfortable on the North Coast Limited. Travel is cooler, cleaner, quieter in air-conditioned trains.

MEALS are a genuine pleasure in Northern Pacific dining cars. "Great Big" Baked Potatoes helped make Northern Pacific diners famous, but the finest cuisine goes with them. When you try a Northern Pacific dinner, you are apt to say ever after, "The Northern Pacific sets the pace for dining car service on American railroads."

EQUIPMENT on the North Coast Limited is modern. The observation car has card room, barber, beauty shop, buffet, ladies' lounge, general lounge and two baths.

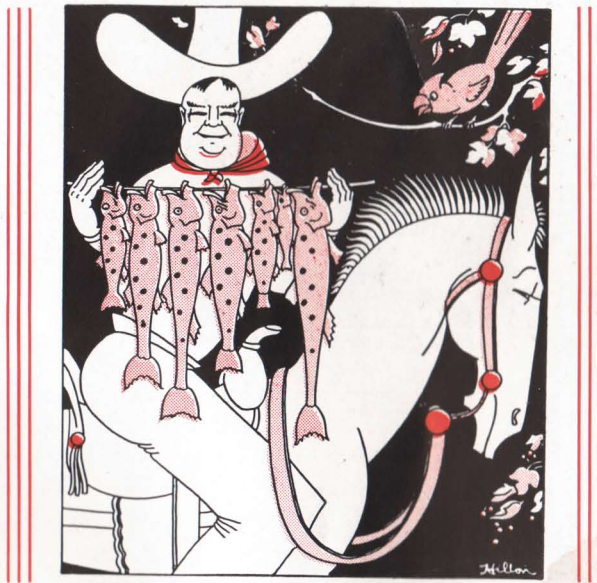
JUST one business day from Chicago to the Ranch country. Leave Union Station late at night, and the next morning but one you are at Gardiner, Cody, Billings, Red Lodge, Big Timber, etc.; at noon you are in Helena or Sheridan; in mid-afternoon in western Montana.

GOING TO A RANCH?

Be sure to ride the

NORTH COAST LIMITED





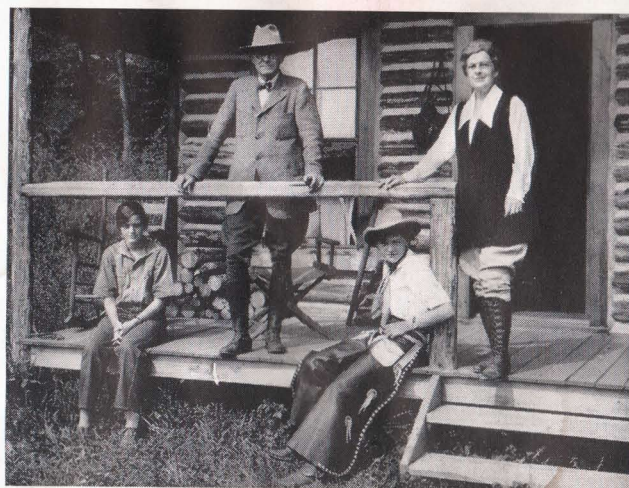
Ranch Holidays

DUDE RANCH VACATIONS, a truly typical American holiday, are appealing to more and more people every year. This is not surprising. In a few words, here are the reasons, cited especially for the benefit of those who may be considering a Ranch Vacation for the first time:

The life of a western Dude Ranch is the natural life of an extensive region that is not duplicated anywhere—a region of picturesque occupation; character, customs, dress and sports developed by that occupation; and of fetching historical traditions dating back to the days of the frontiersmen of the old West.

Always ranch life has depended upon and contended with natural circumstances and elements. It has been influenced by the broadness of surrounding plains and the mightiness of towering mountains. Consequently it has fostered a philosophy that is refreshing and re-awakening particularly to the city dweller who has lived constantly among “artificial” things and under conditions created by man.

Aside from its advantages of play and rest, ranch life develops self-reliance, appreciation of beauty, and a knowledge of the real values of the big outdoor world.





*Ranch Guests Thoroughly
Enjoy Themselves.*

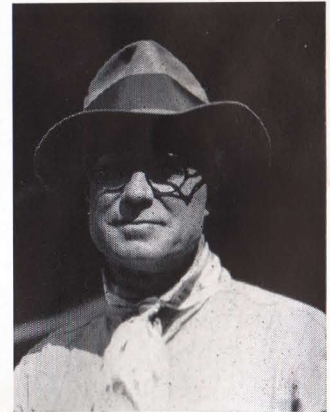
It stirs and satisfies the desire to explore and grow. So it appeals universally to untried youth, and to the spirit of youth which persists in persons of all ages.



If you have not known this "different vacation," a great experience awaits you. Ranching in Wyoming, Montana or Idaho will race red blood in your veins, will expand your lungs with keen mountain air, will bring a great clearness and peace to your mind and new health and zest to your body.

Do you want a change, when vacation time comes? Ranching is as complete a change from city life as one can possibly imagine. Men and women, boys and girls become a part of the ranch immediately upon arrival. They don blue denim overalls, gay-colored shirts and neckerchiefs, boots and cowboy hats. The main thing is to be comfortable for loafing round the ranch and for horseback riding.

Ranches are hospitable, friendly households, where you will be accepted with warmth and appreciation. People of somewhat similar tastes are attracted to Dude Ranches—they enjoy horseback riding and outdoor sports themselves or they bring children who do. Exactly opposite to the restraint and social aloofness which often settles down upon a fashionable apartment or resort, the Dude Ranch has an air of camaraderie and good fellowship as far removed from "high hatting" as it is possible to conceive. All come to the Ranch to have a good time and they do—they discover a happier, gayer, freer, more interesting vacation than they ever dreamed of. No one can be bored, or sophisticated or reserved or unfriendly at a Dude Ranch. You let yourself go, or rather "yourself" lets go whether you plan so or not, and you enter into the spirit of the place willingly, joyfully, completely—it is impossible to do otherwise.



*What a paradise for
children—and mothers!*



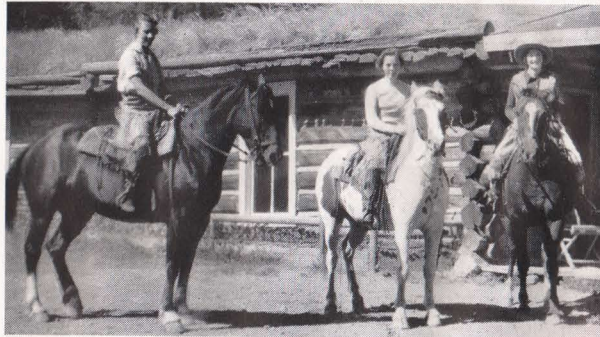


Why are people fascinated by Dude Ranches? Why do those who have been there insist on going back again and again? Because they find ranching gives them just what a vacation should—a thorough rest, enough adventure, healthy exercise and western romance and excitement to be interesting, the most ravenous appetite by day and the soundest sleep by night that they have ever known. They find cordial, hospitable, honest-to-goodness people, who are *real* and who become friends they are proud to keep through life. When “dudes” (and most easterners smile over and enjoy the term) come back home from a ranch holiday, the sun and wind tan soon fades away but precious memories of jagged skylines, the mountain outings, the friends made, the strange pleasant experiences of ranch days warm their souls for all time to come.

Dude Ranches are of several sorts—cattle ranches, horse ranches, sheep ranches, mountain lodges, mountain camps and ranchified farms. Some places have both cattle and sheep but all have horses and go in for horseback riding in a large way. Hot springs resorts in the mountains are not true Dude Ranches but they have horses, tennis and outdoor activities, with baths from natural hot springs in addition.



*Families
Grownups, Children
Rest and Play
at
Dude Ranching
—and Like It!*





Some ranches ordinarily are patronized by congenial crowds of young married people; others have groups of young men and women of college age, with chaperones; at others, boys and girls from eastern prep-schools predominate; some ranches chiefly attract families,—parents with children. One ranch will have its principal attendance from Pennsylvania, another from Maryland, Virginia and the Carolinas, still another from Kentucky, Louisiana and the central south, others have a vogue with New Englanders and New Yorkers.



To find just the ranch to suit your particular taste, consult the Northern Pacific. If you can call at any of the offices, listed below, it would be helpful. These offices have "literature" about individual ranches; our larger offices have immense albums containing authentic photographs of a hundred or more ranches—interiors, exteriors, main buildings, guest rooms, cottages, bathrooms, scenic surroundings; they even have pictures of ranch bosses and their wives, many of whom are known personally to men in the Northern Pacific offices. You can get exact dependable information from the Northern Pacific and when choosing a Dude Ranch, you want to be sure about everything before you start.



It is of great importance to the Northern Pacific to place ranch guests where they will be enthusiastically satisfied; therefore we take the greatest pains toward that end.



You are invited to call at any of these Northern Pacific Agencies:

| | |
|----------------|--------------------------------|
| BOSTON | 236 Old South Bldg. |
| BUFFALO | 716 Ellicott Square |
| BUTTE | 405 Metals Bank Bldg. |
| CHICAGO | 73 E. Jackson Blvd. |
| CINCINNATI | 615 Gwynne Bldg. |
| CLEVELAND | 1334 Terminal Tower |
| DALLAS | 901 S. W. Life Bldg. |
| DES MOINES | 328 Des Moines Bldg. |
| DETROIT | 1006 Transportation Bldg. |
| DULUTH | 334 W. Superior St. |
| KANSAS CITY | 116 Ry. Exchange Bldg. |
| LOS ANGELES | 506 Central Bldg. |
| MILWAUKEE | 1418 Majestic Bldg. |
| MINNEAPOLIS | 701 Marquette Ave. |
| NEW YORK CITY | 560 Fifth Ave. |
| PHILADELPHIA | 926 Fidelity-Phila Trust Bldg. |
| PITTSBURGH | 608 Park Bldg. |
| PORTLAND, ORE. | 707 American Bank Bldg. |
| ST. LOUIS | 440 Boatmen's Bank Bldg. |
| SAN FRANCISCO | 657 Market St. |
| SEATTLE | 200 Smith Tower |
| SPOKANE | 701 Sprague Ave. |



Guest Cabins Are Rustic, But Most Inviting.

| | |
|------------------|--------------------|
| TACOMA | 118 S. 9th St. |
| VANCOUVER, B. C. | 678 Howe St. |
| VICTORIA, B. C. | 912 Government St. |
| WINNIPEG, MAN. | 204 Paris Bldg. |

If inconvenient for you to call, address a letter to your nearest Northern Pacific agency or write to Mr. Max Good-sill, General Passenger Agent, Northern Pacific Railway, St. Paul, Minn., who has intimate personal acquaintance with the ranches and their operators.

In correspondence, the following information from you is requested: Name and address, of course; how many in your family or party? If children are included, give approximate ages, please. Do you want a private bath or are you interested in "roughing it" a bit? Do you prefer a mountain lodge, a livestock ranch or what? Do you prefer "open" foothills country or mountain trail riding?

Do you choose a lively, active, busy ranch life, an easy going moderate pace, or downright slow and peaceful? Do you want a remote place in the wilderness? Would you be happiest at a ranch having a very small family of guests (8 to 20), one of middle size (20 to 40) or a large ranch (40 to 100)? Indicate about what sum you wish to invest in your vacation, or what weekly rate appeals to you as fair. What are the probable dates of your trip?

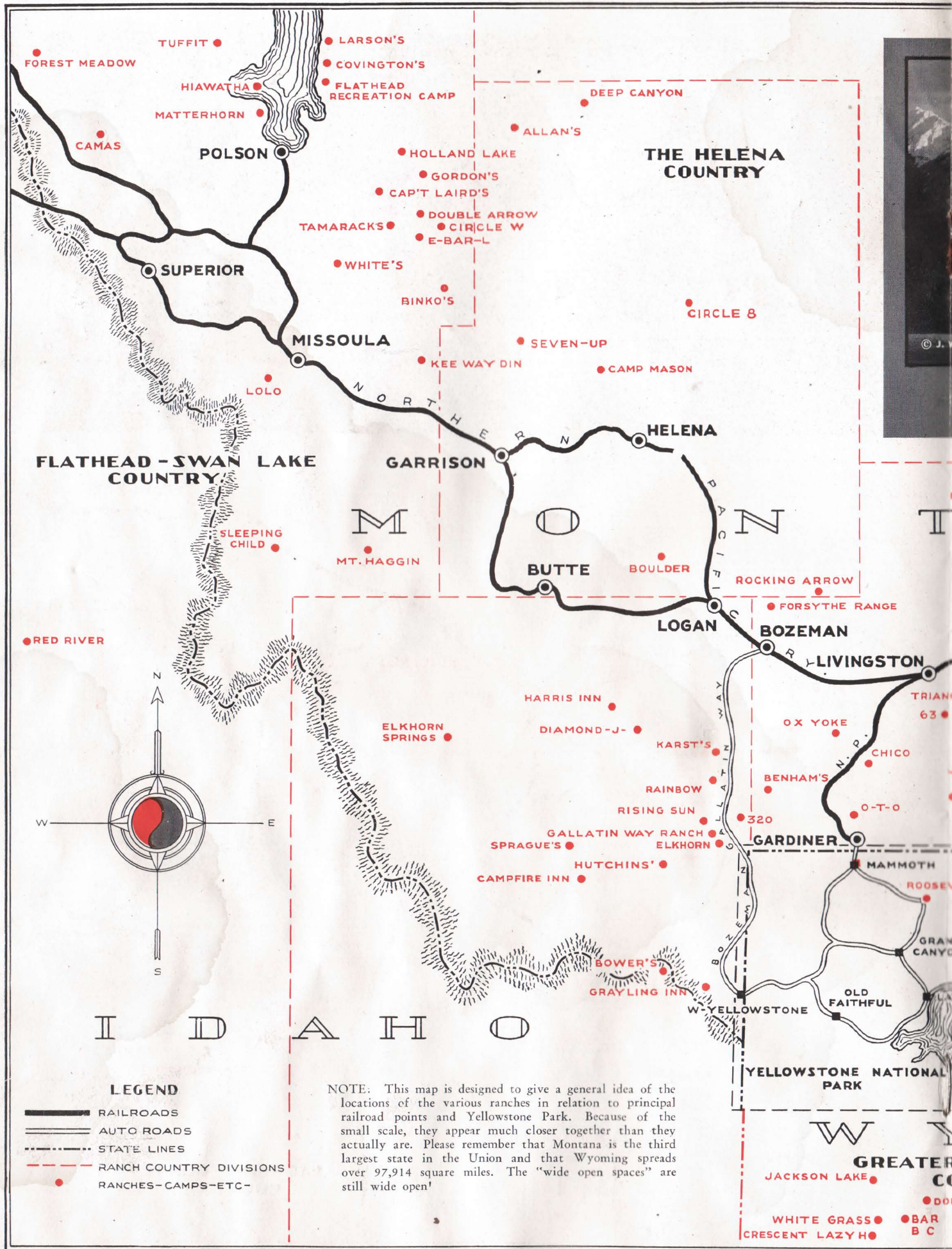
*If you wish
further descriptive
matter about ranches,
and information
about railroad and
Pullman fares,
address*

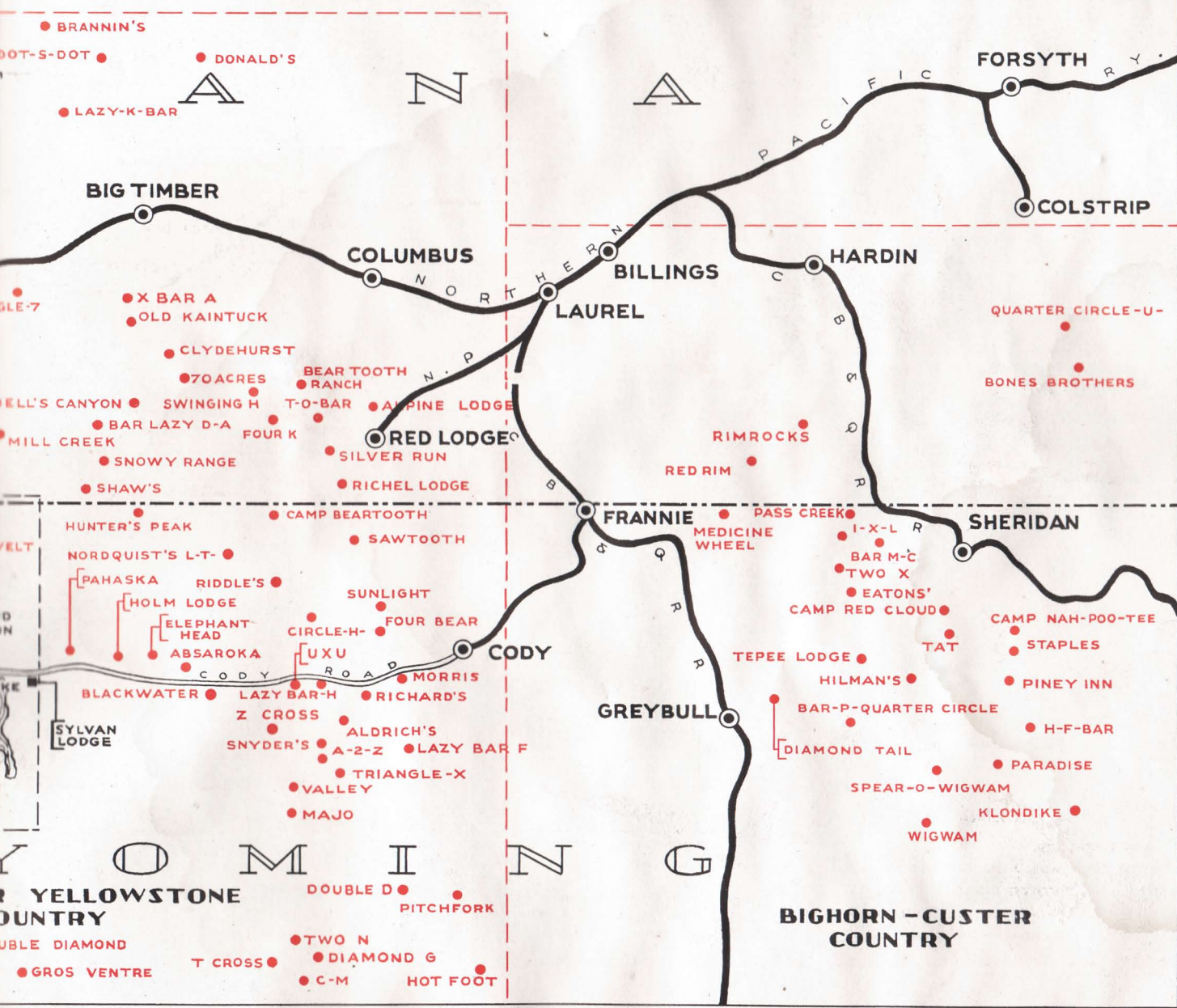
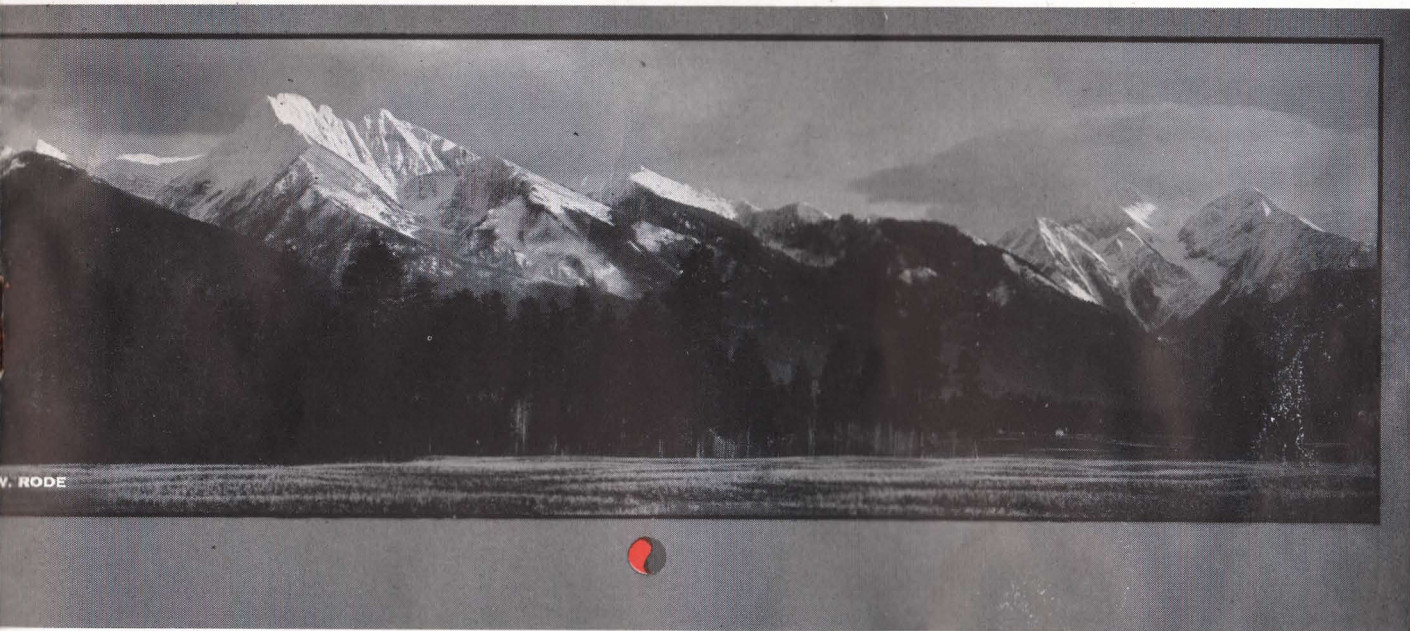


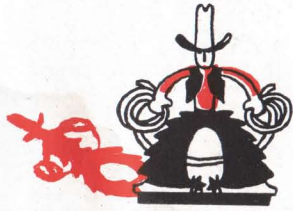
E. E. NELSON, *Passenger Traffic Manager*
Northern Pacific Railway, ST. PAUL, MINN.



P. S.—Please leave your autos at home. Get away from city traffic, horns and gasoline smells. You'll like sagebrush and pines better for a while and for a change.







IS

Your Question HERE?



Questions that have been raised about ranches, and answers:

What clothes should I bring to the ranch?

We recommend the following as essential—two pairs blue denim waist-high overalls, a strong leather belt, boots any style but 12-inch cowboy preferred, a half dozen pairs of cotton socks and two pairs wool, a half dozen shirts of any color—the gayer the better, one woolen shirt, ordinary summer underwear (avoid buttons in back), one cowboy hat, ordinary pajamas, one lightweight and one medium-heavy sweater, one leather or wool jacket, plenty of handkerchiefs with a few bright ones included, a pair of stout leather gloves, a slicker, a pair of walking shoes, a sport outfit or so, both for traveling and for ranch wear evenings. In addition, the following are useful, but not necessary—riding habit, spurs, a leather vest, chaps. Dude Ranch clothes are carried by sporting goods stores, large department stores and specialty shops; also they may be purchased out West on arrival—even the smallest western trading centers sell authentic and dependable western merchandise such as cowboy hats and boots, leather goods, shirts, neckerchiefs, slickers, overalls, belts, etc. Jodhpurs are suitable for girls and women, but not for men. Men mostly wear blue jeans, waist length, or riding breeches. Ladies also wear divided leather or gabardine skirts.

What other equipment would be useful?

A camera and film (you can buy film in all sizes at or near each ranch). A movie camera and film. Trout fishing outfit, if you want to go in for that. A swimming suit. A fountain pen, a topcoat, smokes, flashlight and field glasses. One-half pint of "Caron oil" to make sun-tanning painless and easy. A stick of camphorated ice to avoid chap on lips caused by dry air. One pair heavy pajamas. A pair of tennis shoes.

Do ranches "go in" for dancing?

Yes, many an evening at the main ranch house or recreation hall. Also guests frequently go to cowboy dances at neighboring ranches or towns. You'll find dancing in cowboy boots quite possible with a bit of practice; or, your sport outfit will come in handy for parties. Dark shoes recommended, certainly not white ones. Some ranches have orchestras; all use radios and phonograph records on occasion.

Are Dude Ranches alike or standardized?

No two Dude Ranches are exactly similar. Each has its own personality, its own attractions. On pages 14 and 15 the ranches are listed and

we have attempted to classify them. Some are cattle and sheep ranches, which have gradually added buildings to accommodate guests. Others are mountain lodges or camps. Some have been built especially for "dudes," "from the ground up," beginning with the selection of scenic locations, the design of guest rooms and ending with recreation rooms, private swimming pools, and such luxuries. All of them have horses, horseback riding and outdoor activities.

Do you want to gallop after cattle, rope calves and help cowboys with the roundup? Then choose a cattle ranch for your vacation.

Perhaps you wish a horse ranch, where fine animals are raised and trained.

Or, do you prefer a place without livestock—just pleasant cabins in the mountains, restful veranda chairs; horses when you want to ride the trails, or go on a camping trip? If so, pick a mountain lodge type of Dude Ranch.

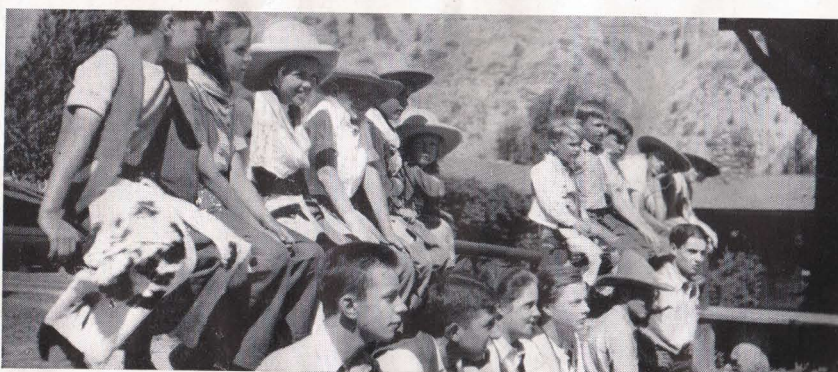
Then there are sheep ranches, where guests help to drive the "woolies" over continental divides to summer range. And there are fishing camps and hot springs resorts. All have their place and extend warm hospitality to their house guests.

Shall I bring a picnic outfit?

Not necessary. The ranches have adequate equipment and handle outings and picnics with great skill, furnishing everything, including cooks.

How much does a ranch vacation really cost?

You can find a ranch to suit your purse. Is \$35 a week all-inclusive





price, satisfactory? Or would you prefer a place charging \$50 a week, or \$25? There are special rates for families, for persons staying all summer, or the year around. Decide about what you wish to pay, whether you want a horse ranch, a mountain lodge, a cattle ranch, a hot springs resort or a rustic camp. The Northern Pacific will gladly advise with you and recommend several suitable places within the price you designate.

Do ranches charge extra for saddle horses?

No, generally speaking. Just a few of the lodges and hot springs places having very low weekly rates do assess an extra charge for horses on days when used. However, 95% of the dude ranches furnish horses at all times without extra charge—they include horses and all living expenses and activities within the weekly or monthly rate.

Can I bring my own saddle and bridle?

Yes, if you wish to do so, although every ranch furnishes saddles and full equipment for all guests.

How much does it cost to fish?

Non-resident license in Wyoming, \$3.00; Montana, \$3.50; Idaho, \$2.00. In Yellowstone Park, no license required.

I have three children, 10, 13 and 16. Will you recommend a ranch where there are other children for them to play with?

There are several ranches which are, indeed, "children's heaven," where the hosts and hostesses specialize in providing good times and busy programs for young folks and where there are always families of children as guests. The Northern Pacific will gladly recommend several such ranches for you to choose from.

My wife and I enjoy horseback riding, but we prefer a ranch where guests are chiefly middle-aged couples, rather than children. Do you know any place of this sort?

Yes, several in Wyoming and several in Montana. Companionship, congeniality and like interests among guests are essential to a good time. You might as well go to a ranch just suited to your tastes, with other guests having similar tastes. The Northern Pacific's information will help you to choose.

Will we have time to read?

Yes indeed. Bring some good books of your own. You'll find others in the ranch library. Other guests will trade reading matter with you. The younger folks go all day long, dance in the evenings and sleep like



The woods are full of surprises.

Welcome to Montana





logs all night from the healthy out-of-doors exertion but the older folks like periods of relaxation, easy chairs, good books and some solitude in their own cottages, on the main ranch veranda or in a quiet spot in the woods.

Can I find a ranch back in the mountains where I can get away from autos, gasoline and all that? I want a change. I want to really rest.

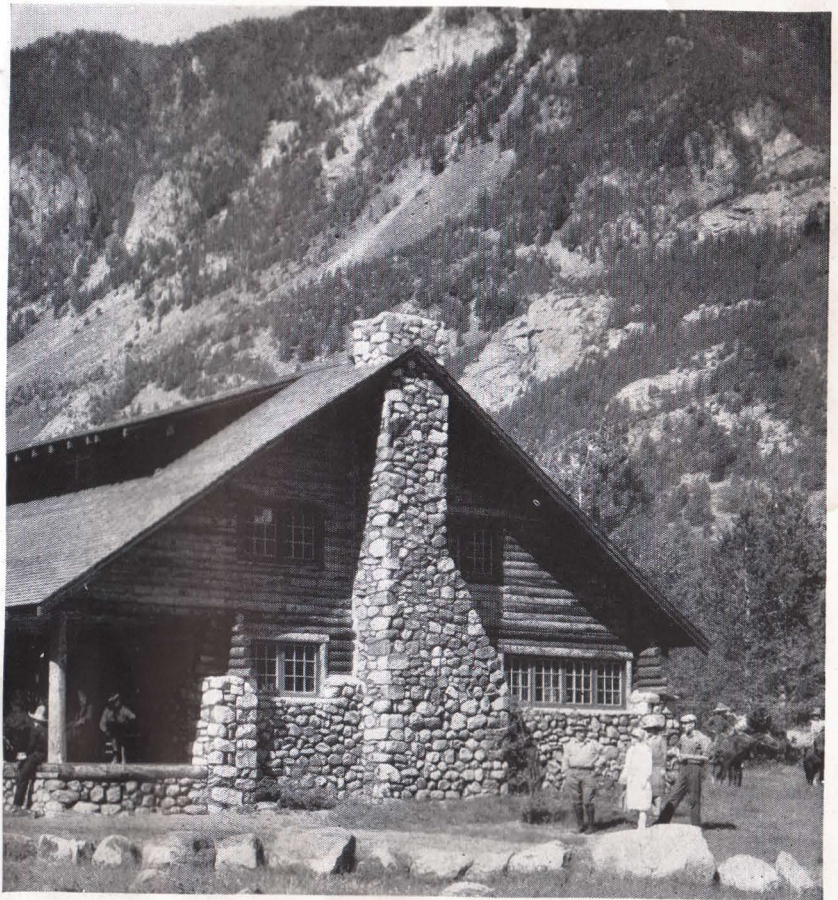
Dude Ranches prefer that their guests leave their cars at home and forget them. The ranch car will meet you at the station, you'll be taken deep into the wilderness and seldom see, hear or smell a motor car. A ranch is a real change from city traffic.

How long does it take to get to the ranch country from Chicago?

Only one business day—leave Chicago at night, then one day en route and the next morning at sunup you're in the mountains and your ranch host is greeting you.

Are there ranches having guests of high school and college age, properly chaperoned?

Several ranches have parties of girls and boys, usually with teachers or counsellors in charge, or parents. Most of the ranches have families with young people as guests.



Main Ranch House.

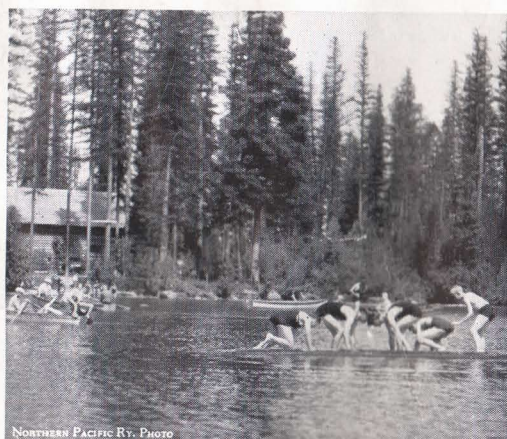


The Corral.



PHOTO BY BROWN FOR NORTHERN PACIFIC RY.

Ranch Saddle House.



NORTHERN PACIFIC RY. PHOTO

The Old Swimm'n' Hole.





What about food?

Ranches, as a whole, serve bountiful meals and have a surprising variety—beef, mutton, pork, chicken, ducks, turkeys, and trout being the various meat dishes. Gardens are featured, with green vegetables regularly on the menu. Dairy products are of the best, every ranch having plenty of rich cream, milk and butter. Fruits are shipped in fresh or canned.



Hunting

Big game stalking and camera-hunting is always in season, of course, and requires no license. But should you desire to indulge in the rare adventure of big game shooting, we shall be glad to recommend a ranch where bear, deer, elk, wolf, cougar and other animals are to be found. Spring bear hunting in May and June is an annual sport at several ranches. Predatory animals may be bagged at any time. Game animals, including bear, are hunted in specified periods in the Fall. Recommended guides, dependable and experienced, guides with the best of records in game-getting, are known to the Northern Pacific. Write E. E. Nelson, 914 Northern Pacific Bldg., St. Paul, for detailed information, or call at any Northern Pacific office.





Dude Ranches

| Name of "Outfit" | Nearest R. R. Station | Minimum Rate Per Week 1 Person | Kind of Place | Name of "Outfit" | Nearest R. R. Station | Minimum Rate Per Week 1 Person | Kind of Place |
|---------------------------|-----------------------|--------------------------------------|---------------------|-----------------------|------------------------------|--------------------------------------|---------------------|
| Absaroka Lodge | Cody, Wyo. | \$45.00 | L (H) | Forest Meadow Camp | Plains, Mont. | \$30.00 | L (H) |
| * Aldrich Lodge | Cody, Wyo. | 35.00 | OR (CH) | * Forsythe Range | Bozeman, Mont. | 40.00 | OR (CH) |
| * Allan Ranch | Helena, Mont. | 50.00 | MR (H) | Four Bear Ranch | Cody, Wyo. | 55.00 | L (H) |
| * A2Z Ranch | Cody, Wyo. | 49.00 | MR (H) | * Four K Ranch | Columbus, Mont. | 35.00 | OR (H) |
| * Bar B C | Gardiner, Mont. | 60.00 | OR (CH) | Frost Ranch | Cody, Wyo. | 45.00 | OR (CH) |
| Bar M C | Ranchester, Wyo. | 32.50 | L (H) | Gallatin Way Inn | Bozeman, Mont. | 50.00 | Y |
| * Bar P Quarter Circle | Greybull, Wyo. | 40.00 | MR (H) | Gordon Ranch | Missoula, Mont. | 50.00 | MR (H) |
| * Beartooth Ranch | Columbus, Mont. | 50.00 | MR (H) | * Gros Ventre Ranch | Gardiner, Mont. | 50.00 | OR (H) |
| Binko Ranch | Missoula, Mont. | 45.00 | OR (CH) | * H Bar 9 Ranch | W. Yellowstone, Mont. | 50.00 | OR (CH) |
| * Blackwater Lodge | Cody, Wyo. | 35.00 | L (H) | * H F Bar Ranch | Clearmont, Wyo. | 50.00 | OR (CH) |
| * Bones Brothers | Forsyth, Mont. | 55.00 | OR (CH) | * Haggin Ranch | Butte, Mont. | 55.00 | MR (H) |
| Boulder Hot Springs | Helena, Mont. | 22.50 | X | Harris Inn | Norris, Mont. | 21.00 | F |
| Bower's Camp | Norris, Mont. | 20.00 | F | Hiawatha Lodge | Polson, Mont. | 35.00 | L (H) |
| Brannin Ranch | Big Timber, Mont. | 35.00 | OR (HS) | Hilman Ranch | Sheridan, Wyo. | 40.00 | OR (CH) |
| * C M Ranch | Bonneville, Wyo. | 70.00 | MR (H) | * Holland Lake Lodge | Missoula, Mont. | 50.00 | L (H) |
| Camp Mason | Helena, Mont. | 20.00 | Y | * Holm Lodge | Cody, Wyo. | 40.00 | L (H) |
| * Camp Sawtooth | Red Lodge, Mont. | 50.00 | L (H) | * Hot Foot Ranch | Cody, Wyo. | 60.00 | OR (CH) |
| Camp Tuffit | Polson, Mont. | 18.00 | F | Hot Springs | Plains, Mont. | 14.00 | X |
| Campfire Inn | Norris, Mont. | 24.50 | F | * Hunters Peak Ranch | Cody, Wyo. | 47.50 | OR (H) |
| Chico Hot Springs | Emigrant, Mont. | 17.50 | X | Hutchins Ranch | Norris, Mont. | 21.00 | F (H) |
| Circle 8 Ranch | Helena, Mont. | 35.00 | L (H) | I X L | Sheridan, Wyo. | 50.00 | MR (CH) |
| Circle H | Cody, Wyo. | 35.00 | L (H) | * Jackson Lake Lodge | Gardiner, Mont. | 35.00 | L |
| Circle W | Missoula, Mont. | 50.00 | MR (H) | Karsts Camp | Bozeman, Mont. | 22.50 | Y Resort |
| * C Lazy S | Big Timber, Mont. | 40.00 | L (H) | Keewaydin Camps | Missoula and Drummond, Mont. | 45.00 | |
| Covington Lodge | Polson, Mont. | 35.00 | L (H) | * Klondike Ranch | Buffalo, Wyo. | 50.00 | OR (HS) |
| * Crescent Lazy H Ranch | Gardiner, Mont. | 65.00 | MR (H) | * Laird's Lodge | Missoula, Mont. | 42.50 | L (H) |
| * Cross Quarter Circle | W. Yellowstone, Mont. | 50.00 | MR (H) | Larson's Lodge | Polson, Mont. | 20.00 | F |
| Deep Canyon Ranch | Helena, Mont. | 30.00 | MR (H) | * Lazy Bar F Ranch | Cody, Wyo. | 35.00 | MR (H) |
| * Dewey Riddle Ranch | Cody, Wyo. | 50.00 | OR (CH) | * Lazy Bar H | Cody, Wyo. | 65.00 | L (H) |
| Diamond G Ranch | Bonneville, Wyo. | 40.00 | L (H) | * Lazy K Bar Ranch | Big Timber, Mont. | 45.00 | OR (CHS) |
| * Diamond J Ranch | Bozeman, Mont. | 60.00 | MR (CH) | Link Bar Ranch | Livingston, Mont. | 40.00 | OR (H) |
| * Diamond Tail Ranch | Greybull, Wyo. | 40.00 | OR (CH) | Lolo Hot Springs | Missoula, Mont. | 21.00 | X |
| * Donald Cattle Ranch | Big Timber, Mont. | 42.00 | OR (CH) | Majo Ranch | Cody, Wyo. | 45.00 | MR (H) |
| * Dot S Dot Ranch | Big Timber, Mont. | 50.00 | OR (CH) | Matterhorn Camp | Polson, Mont. | 15.00 | F |
| * Double Arrow Ranch | Missoula, Mont. | 50.00 | OR (H) | Medicine Wheel Ranch | Sheridan, Wyo. | 60.00 | L (H) |
| * Double Dee Ranch | Cody, Wyo. | 65.00 | OR (CH) | Mill Creek Ranch | Livingston, Mont. | 40.00 | L (H) |
| * Double Diamond Ranch | Gardiner, Mont. | 50.00 | OR (H) | Mission Range Ranch | Ravalli, Mont. | 15.00 | MR |
| * Double L Bar | Cody, Wyo. | 50.00 | OR (H) | * Morris Ranch | Cody, Wyo. | 45.00 | OR (H) |
| * E Bar L Ranch | Missoula, Mont. | 50.00 | OR (H) | * Nordquist's L Bar T | Gardiner, Mont. | 50.00 | OR (CH) |
| Eaton's Ranch | Sheridan, Wyo. | 57.50 | OR (CH) | Old Kaintuck Camp | Big Timber, Mont. | 24.50 | Y |
| * Elephant Head Lodge | Cody, Wyo. | 45.00 | L (H) | | | | |
| Elkhorn Hot Springs Hotel | Dillon, Mont. | 25.00 | X | | | | |
| * Elkhorn Ranch | Bozeman, Mont. | 70.00 | OR (CH) | | | | |

[List of Ranches Continued on Next Page]

SYMBOLS:

OR—Operating and producing ranches.
MR—Mountain Ranch.
L—Lodges and Mountain Camps.

F—Fishing Camps and Lake Resorts.
Y—Mountain Lodge for transient tourists.
X—Hot Springs Resort.

SYMBOLS IN PARENTHESES:

(C)—Cattle on ranch.
(H)—Horses on ranch.
(S)—Sheep on ranch.

(CH)—Cattle and Horses.
(HS)—Horses and Sheep.
(CS)—Cattle and Sheep

*—Member of Dude Ranchers' Association.





HERE we enclose several loose pages, each one describing and picturing a typical ranch—do they suit you? Please check over the list of places on this and the preceding pages, then ask the Northern Pacific for full details about any one of the listed ranches, lodges, camps or resorts. Separate leaflets are available on individual “outfits” to help you find exactly the kind of place you prefer for yourself, your family, your friends.

| Name of "Outfit" | Nearest R. R. Station | Minimum Rate Per Week 1 Person | Kind of Place |
|--------------------------|-----------------------|--------------------------------------|---------------------|
| Olinger Ranch Camp | Big Timber, Mont. | \$17.50 | MR (H) |
| * O T O Ranch | Corwin Springs, Mont. | 45.00 | OR (CH) |
| * Ox Yoke Ranch | Livingston, Mont. | 60.00 | OR (CH) |
| * Pahaska Teepee | Cody, Wyo. | 45.00 | L (H) |
| * Paradise Ranch | Buffalo, Wyo. | 45.00 | L (H) |
| * Pass Creek Ranch | Sheridan, Wyo. | 50.00 | OR (CH) |
| * Piney Inn | Sheridan, Wyo. | 35.00 | L (H) |
| * Pitchfork Ranch | Cody, Wyo. | 55.00 | OR (CHS) |
| * Quarter Circle U | Forsyth, Mont. | 45.00 | OR (CH) |
| * Rafter Cross Bar Ranch | Sheridan, Wyo. | 40.00 | OR (CH) |
| Rainbow Inn | Bozeman, Mont. | 30.00 | Y |
| * Rapid Creek Ranch | Sheridan, Wyo. | 55.00 | OR (CH) |
| Richel Lodge | Red Lodge, Mont. | 35.00 | L (H) |
| Rim Rock Ranch | Cody, Wyo. | 40.00 | L |
| Rising Sun Ranches | Bozeman, Mont. | 45.00 | MR (H) |
| Rocking Arrow Ranch | Bozeman, Mont. | 25.00 | MR |
| Seven Bar 9 | Helena, Mont. | 50.00 | MR (CH) |
| * Seven Up Ranch | Helena, Mont. | 35.00 | MR (H) |
| * S Half Diamond Ranch | Polson, Mont. | 45.00 | OR (CHS) |
| Sharp's Ranch | Missoula, Mont. | 35.00 | OR (S) |
| Shaw's Camps | Gardiner, Mont. | 50.00 | LY (H) |
| * Sixty Three Ranch | Livingston, Mont. | 45.00 | MR (H) |
| Sleeping Child Springs | Hamilton, Mont. | 15.00 | X |
| * Snowy Range Ranch | Livingston, Mont. | 35.00 | MR (H) |
| * Spear O Wigwam | Sheridan, Wyo. | 35.00 | L (H) |
| Sprague Ranch | Norris, Mont. | 25.00 | F |
| Staples Resort | Sheridan, Wyo. | 35.00 | Y |
| * Sunlight Ranch | Cody, Wyo. | 65.00 | OR (CH) |
| * Swinging H Ranch | Columbus, Mont. | 40.00 | OR (H) |
| * Tamaracks | Missoula, Mont. | 50.00 | L (H) |
| * T A T Ranch | Sheridan, Wyo. | 50.00 | OR (SH) |
| * T Cross Ranch | Bonneville, Wyo. | 50.00 | OR (CH) |
| * Teepee Lodge | Sheridan, Wyo. | 50.00 | L (H) |
| * T O Bar Ranch | Columbus, Mont. | 30.00 | OR (CH) |
| Triangle Seven Ranch | Livingston, Mont. | 42.50 | OR (CH) |

| Name of "Outfit" | Nearest R. R. Station | Minimum Rate Per Week 1 Person | Kind of Place |
|---------------------|-----------------------|--------------------------------------|---------------------|
| * Triangle X Ranch | Cody, Wyo. | \$40.00 | L (H) |
| * Two N Ranch | Bonneville, Wyo. | 35.00 | OR (H) |
| Two X Ranch | Sheridan, Wyo. | 35.00 | L |
| * U X U | Cody, Wyo. | 50.00 | L (H) |
| * Valley Ranch | Cody, Wyo. | 56.00 | OR (H) |
| * White Grass Ranch | Gardiner, Mont. | 50.00 | MR (H) |
| Wigwam | Worland, Wyo. | 30.00 | Y |
| X Bar A | Big Timber, Mont. | 25.00 | OR (C) |
| Z Cross | Cody, Wyo. | 40.00 | MR (H) |

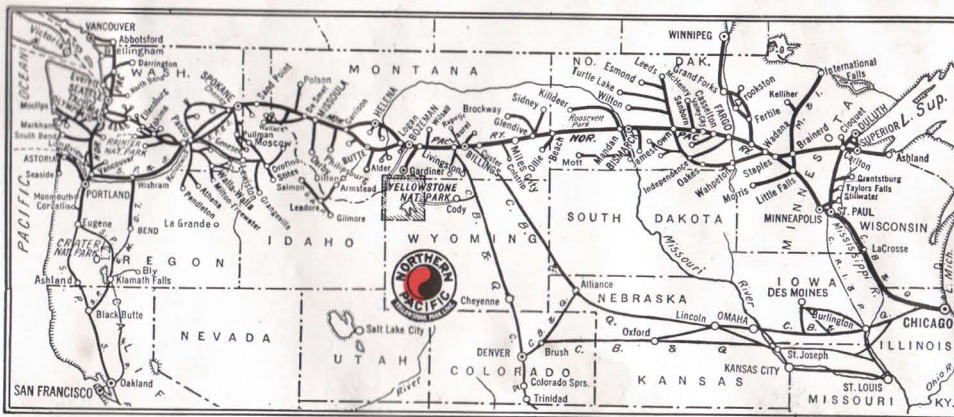


Winter in the Ranch Country

Consider the invigorating attractions of a winter experience at a Montana, Wyoming or Idaho ranch.

Very special rates, in fact, make your own! What do you want to pay per month for son, for daughter, for yourself? The ranches will meet you more than “half way.” They’ll go nearly all the way—enjoy their winter hospitality some year!

Travel to the Ranch Country on the Northern Pacific



Write

NORTHERN PACIFIC RAILWAY

SAINT PAUL, MINNESOTA

for ranch information or call at any
Northern Pacific Office



