



Huge Petrified Tree Stump in the Bad Lands



Olsen Ranch, near Medora, North Dakota Indian



A Tree Trunk Turned to Stone



The Rumanian Royal Party at the Medora Rodeo in the Bad Lands

The Northern Pacific Railway

goes through the famous

Bad Lands of North Dakota

"Roosevelt Park"



Theodore Roosevelt earned his sobriquet, "The Cowboy President," in the Bad Lands of North Dakota. Among the rugged buttes and flaming mesas of this wholesome, outdoor country he found much of the strength and robustness to fit him for his "strenuous life."



The Petrified Forest of the Bad Lands contains many such remarkable specimens as the stump in the picture. Fragments reveal that a forest of mighty trees once grew there, and was submerged for ages beneath a post-glacial inland sea that turned its trunks and branches to stone.



Peaceful Valley Ranch, near Medora, North Dakota, is one of the original Bad Lands cattle ranches turned now to the pleasure of "Dudes". Vacationists there ride cow ponies over the range, "hike" the Bad Lands trails, or rest in the comfort of the hospitable Olsen ranch house.



The Medora Rodeo, on the Little Missouri River, North Dakota, gives Northern Pacific visitors a glimpse of the old Dakota frontier days, as cowboys of the Bad Lands compete in the thrilling rodeo classics: steer-riding, broncho-busting, roping and bull-dogging.



The old trails of the Bad Lands among the painted hills afford an incomparable exploring ground for vacationists who like to ride. There are shaded valleys for picnics, quiet canyons, picturesque buttes and plenty of fresh air and sunlight for all.



The historic aspect of Medora, North Dakota, has an added feature in the old stagecoaches used to carry guests out to the Olsen Peaceful Valley ranch and on sightseeing tours to the Petrified Forest and through the picturesque buttes, hills and canyons of "Roosevelt Park."

Northern Pacific Railway

THE ALL-PULLMAN "NORTH COAST LIMITED"



General
Passenger
Department
St. Paul, Minn.

Chicago—St. Paul—Minneapolis—Duluth—Superior—Minnesota's 10,000 Lakes—
 Fargo—Bismarck—"Roosevelt Park" (Dakota Bad Lands)—Billings—Yellowstone
 Park—Livingston—Bozeman—Helena—Butte—Missoula—Sand Point—Spokane—
 Yakima—Seattle—Tacoma—Portland—Vancouver—Victoria.



Passenger
Offices in
Most Large
Cities

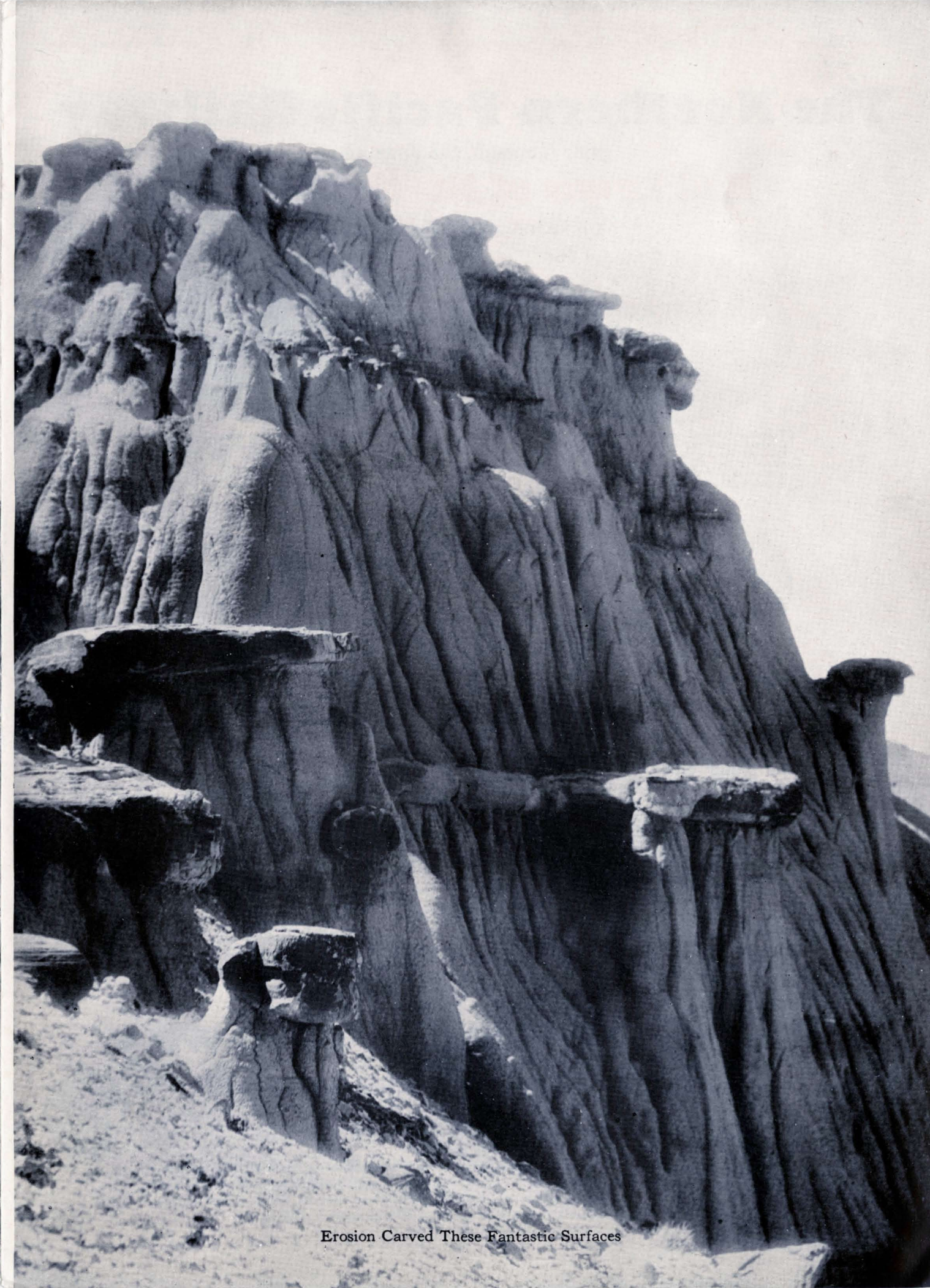
The Picturesque Bad Lands of North Dakota

Include Them on Western Itineraries!





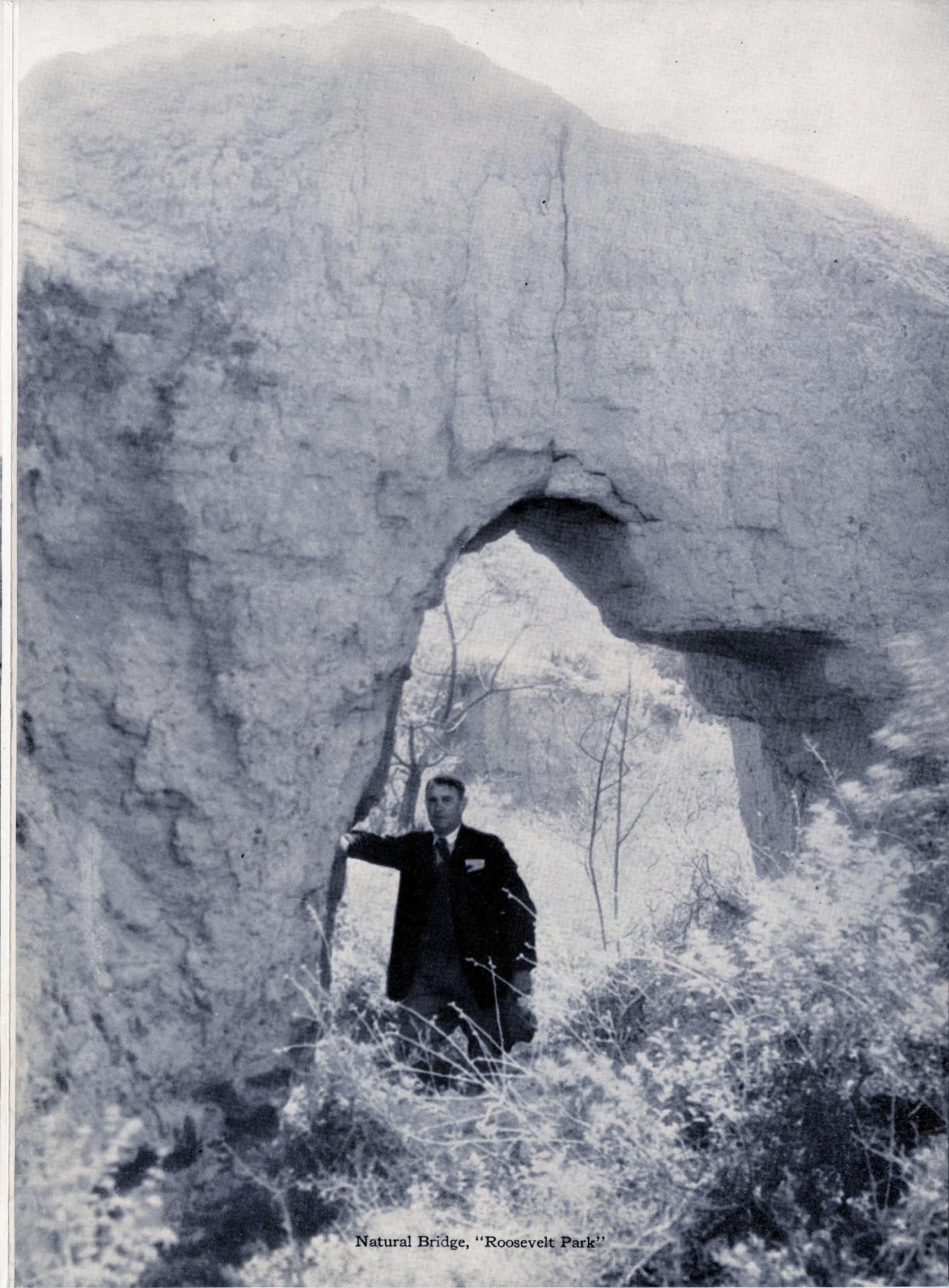
A Petrified Stump High on a Clay Pedestal, Pyramid Park
(Called Indian Head Rock)



Erosion Carved These Fantastic Surfaces



An Escarpment Chiseled by Wind and Water



Natural Bridge, "Roosevelt Park"