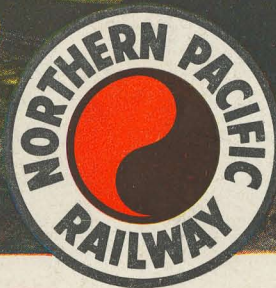


All aboard for...

your

NORTHWEST ADVENTURE



via NORTHERN PACIFIC'S...

VISTA DOME
NORTH COAST LIMITED



SCHEDULE OF THE VISTA-DOME NORTH COAST LIMITED

WESTBOUND — Train 25

Lv. Chicago	(CB&Q) (CST)	11:30 am	Sun.
Lv. St. Paul	(NP)	6:30 pm	"
Lv. Minneapolis		7:00 pm	"
Lv. Duluth		5:05 pm	"
Lv. Superior		5:17 pm	"
Lv. Staples		9:21 pm	"
Lv. Fargo		11:25 pm	"
Lv. Jamestown		1:06 am	Mon.
Lv. Bismarck		2:49 am	"
Lv. Mandan	(MST)	2:11 am	"
Lv. Dickinson		4:00 am	"
Ar. Glendive		5:57 am	"
Ar. Miles City		7:27 am	"
Ar. Forsyth		8:24 am	"
Ar. Billings		10:18 am	"
Ar. Livingston		12:30 pm	"
Ar. Bozeman		1:21 pm	"
Ar. Helena		3:50 pm	Mon.
Ar. Butte		3:49 pm	Mon.
Ar. Missoula		6:11 pm	"
Ar. Spokane	(PST)	10:45 pm	"
Ar. Pasco		1:33 am	Tue.
Ar. Yakima		3:37 am	"
Ar. Ellensburg		4:41 am	"
Ar. Portland		7:30 am	"
Ar. Tacoma		8:00 am	"
Ar. Seattle	(CB&Q)	8:00 am	"

Good connections at Portland with California trains.

EASTBOUND — Train 26

Lv. Seattle	(PST)	1:30 pm	Sun.
	(King St. Station)		
Lv. Tacoma		1:15 pm	"
Lv. Portland		3:00 pm	"
Lv. Ellensburg		4:48 pm	"
Lv. Yakima		5:50 pm	"
Lv. Pasco		7:50 pm	"
Lv. Spokane		10:45 pm	"
Lv. Missoula	(MST)	5:15 am	Mon.
Lv. Helena		7:10 am	Mon.
Lv. Butte		7:35 am	Mon.
Lv. Bozeman		10:06 am	"
Lv. Livingston		10:51 am	"
Lv. Billings		1:03 pm	"
Lv. Forsyth		2:52 pm	"
Lv. Miles City		3:44 pm	"
Lv. Glendive		5:15 pm	"
Lv. Dickinson		7:15 pm	"
Lv. Mandan	(CST)	10:07 pm	"
Lv. Bismarck		10:19 pm	"
Lv. Jamestown		12:07 am	Tue.
Lv. Fargo		1:47 am	"
Ar. Staples		3:44 am	"
Ar. Superior		7:39 am	Tue.
Ar. Duluth		7:55 am	"
Ar. Minneapolis		6:10 am	Tue.
Ar. St. Paul		6:40 am	"
Ar. Chicago	(CB&Q)	1:45 pm	"

Good connections at Chicago with trains East and South.

Old Faithful Geyser,
Yellowstone Park

All aboard for your

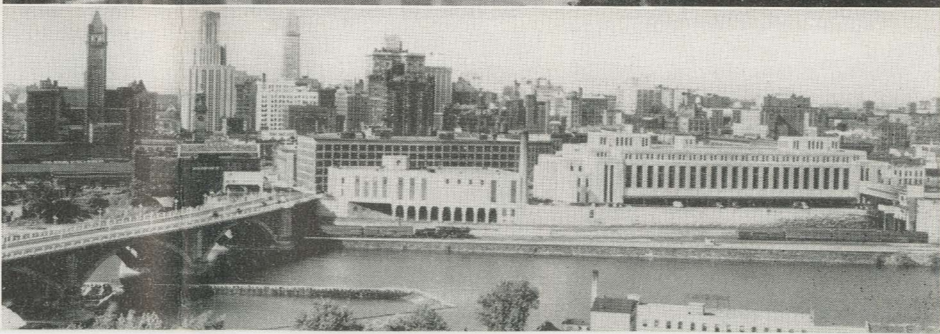
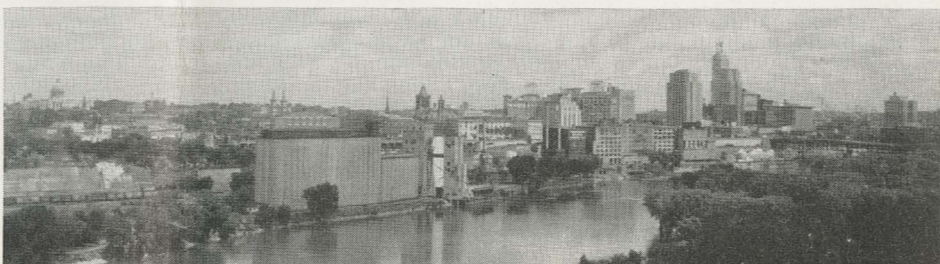
NORTHWEST ADVENTURE!

Here's a picture preview of where you'll go, what you'll see and how you'll travel via Northern Pacific's VISTA-DOME North Coast Limited...

Table of Contents

	Page
Train Schedule	2
Vista-Domes	6, 8
Day-Nite Coaches	10
Roomettes	12
Bedrooms	14
Compartments	16
Low "Family Plan" Fares	16
Diner	18
Lounges	18
NP Ticket Offices	19
"Main Street" Map	4, 5
Yellowstone National Park	7
Teton Park, Sunlight Basin	9
Dude Ranches	11
Pacific Northwest	13, 15
Alaska	17
California	17
Canada	17

Twin Cities of St. Paul and Minneapolis—gateway cities to Minnesota's famed 10,000 Lakes Region—form an industrial and residential metropolitan area of more than a million population. St. Paul (above) is Minnesota's capital; Minneapolis, "City of Lakes," is a noted flour milling center.





Spectacular parades feature Seattle's annual "Seafair" celebration.



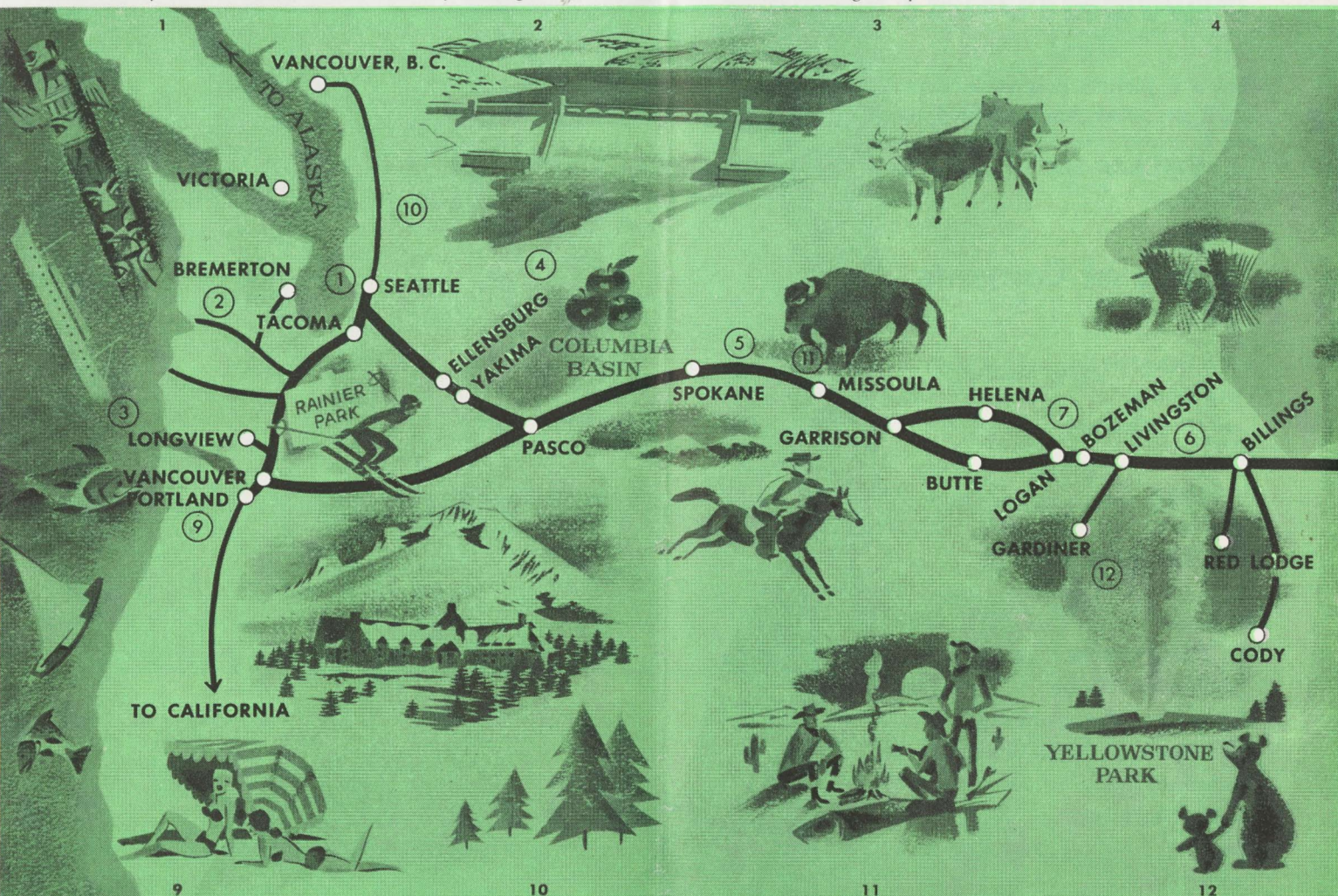
Olympic National Park is easily reached from Puget Sound cities.



The fighting Salmon is king of the Northwest game fish.



Giant Grand Coulee Dam channels water to million-acre Columbia Basin.



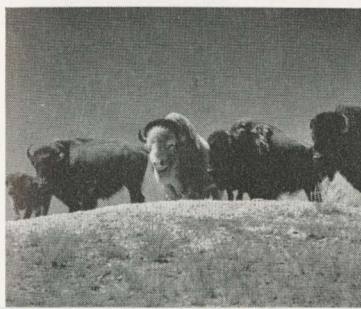
Portland Rose Festival is annual event in the "city of roses."



Logging is still a prime industry in towering Northwest forests.



Buffalo still roam on National Bison Range west of Missoula, Mont.



Gardiner Arch, one of three Northern Pacific entrances to Yellowstone.





Lair of famed Kamloops trout is Lake Pend Oreille, Idaho.



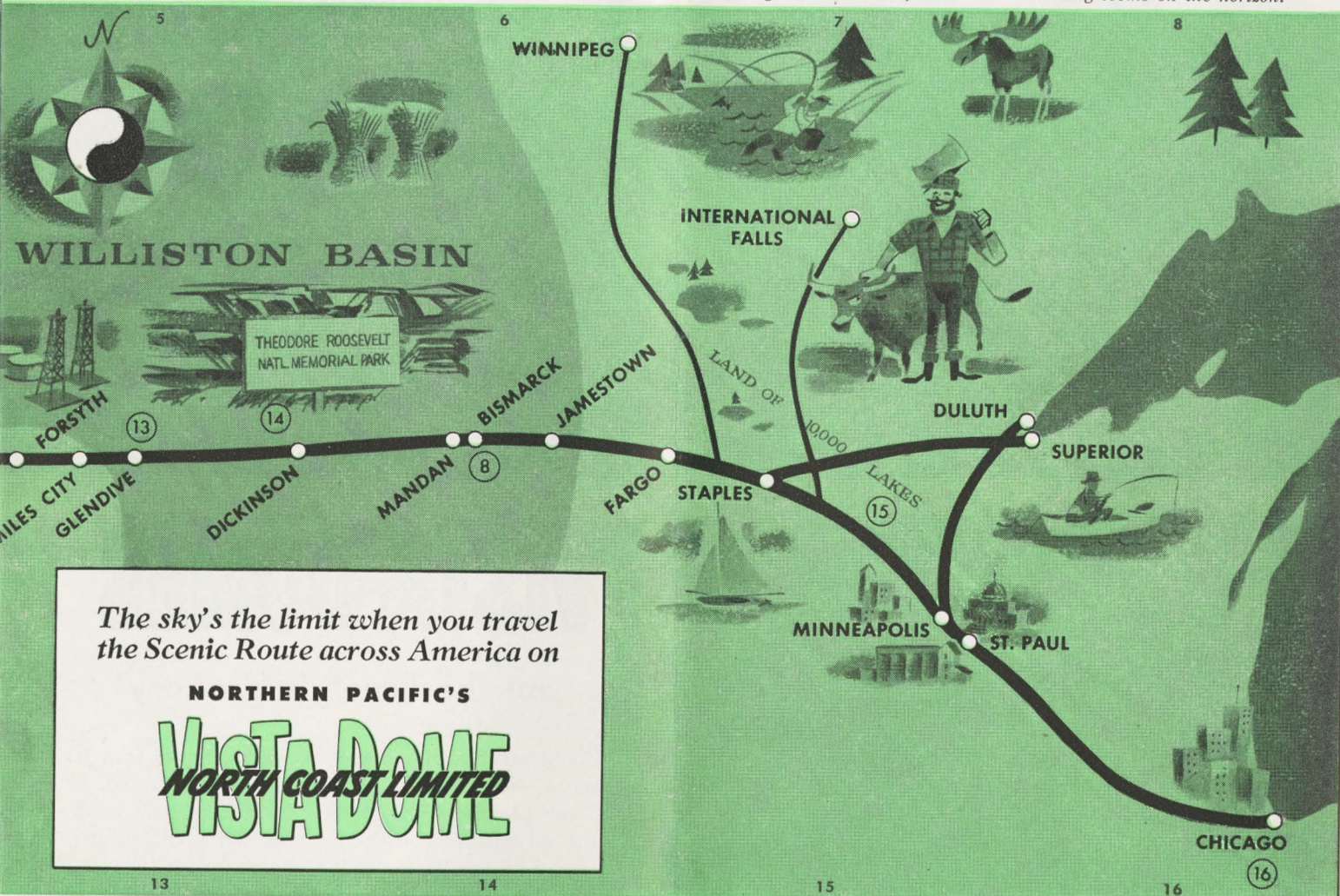
Western rodeos provide rough-and-tumble thrills, trick riding.



Many western dude ranches are real working cattle ranches, too.



North Dakota's modern capitol building looms on the horizon.



The sky's the limit when you travel
the Scenic Route across America on

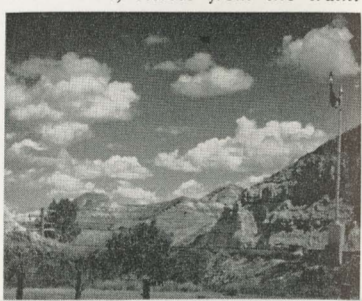
NORTHERN PACIFIC'S

VISTA DOME
NORTH COAST LIMITED

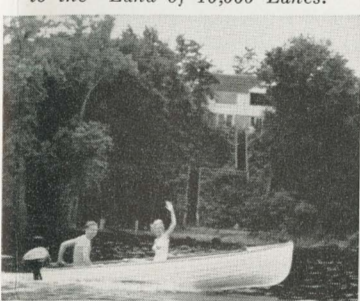
Williston Basin of Montana and the Dakotas is a new major oil field.



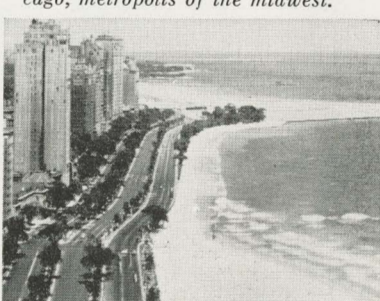
Strange shapes, weird colors mark Bad Lands, visible from the train.



Water sports attract many visitors to the "Land of 10,000 Lakes."



Hub of America's railroads is Chicago, metropolis of the midwest.



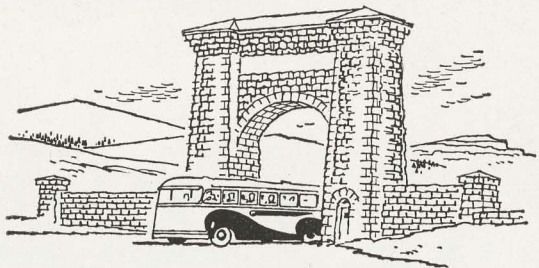


VISTA-DOMES

put the "see" in scenery!

You'll see the Northwest as you've never seen it before—when you step up the stairway to a North Coast Limited Vista-Dome. Stretching out ahead and all around you there's a broad, breathtaking panorama—mile after mile of mountains and forests, rivers and plains—the magnificent Scenic Route Across America.

By day you watch rugged, snow-capped peaks soaring high above you . . . white water tumbling through evergreen foliage far below. By night you marvel at millions of stars, at the skyline sharp-etched against silvery moonglow.



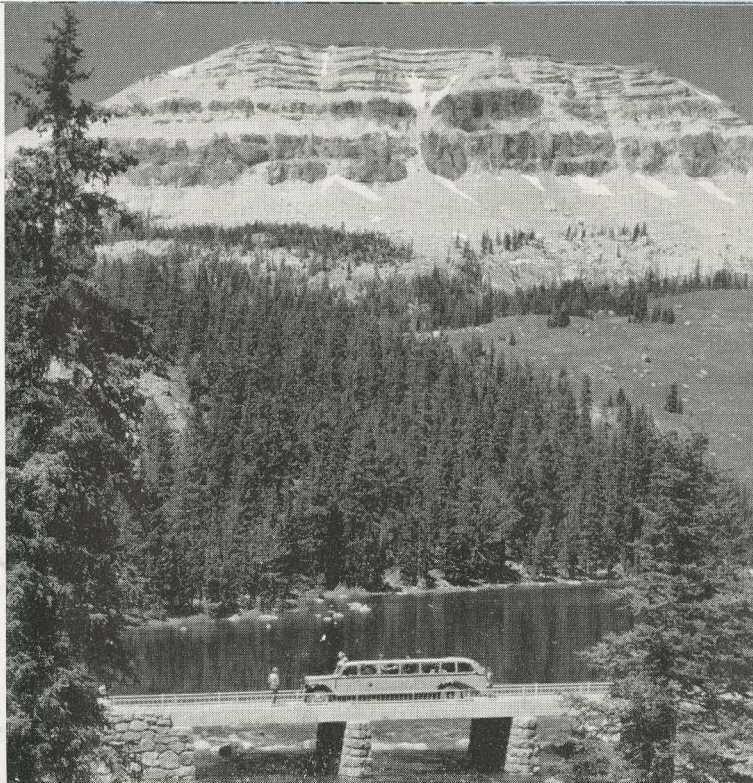
You'll find a western
wonderland at

YELLOWSTONE

NATIONAL PARK

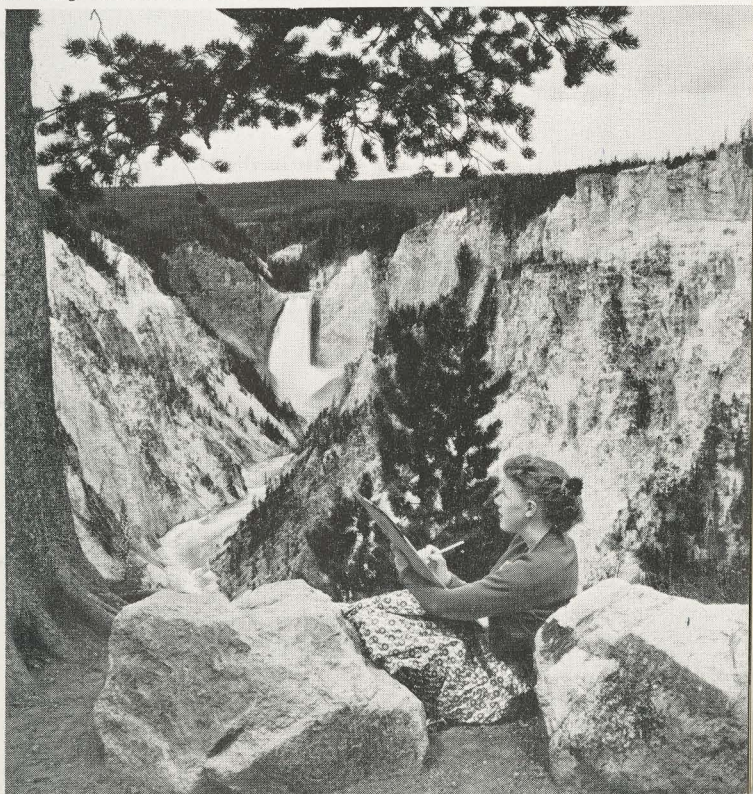
You'll marvel at its frothing geysers, its bubbling pot-holes and pools. You'll be inspired by the sheer scenic beauty of a wide-open wilderness still unspoiled. You'll see for yourself why our oldest, largest national park is one of the nation's most popular playgrounds. In spring and fall, before and after the regular park season, special one-day tours are available to transcontinental travelers.

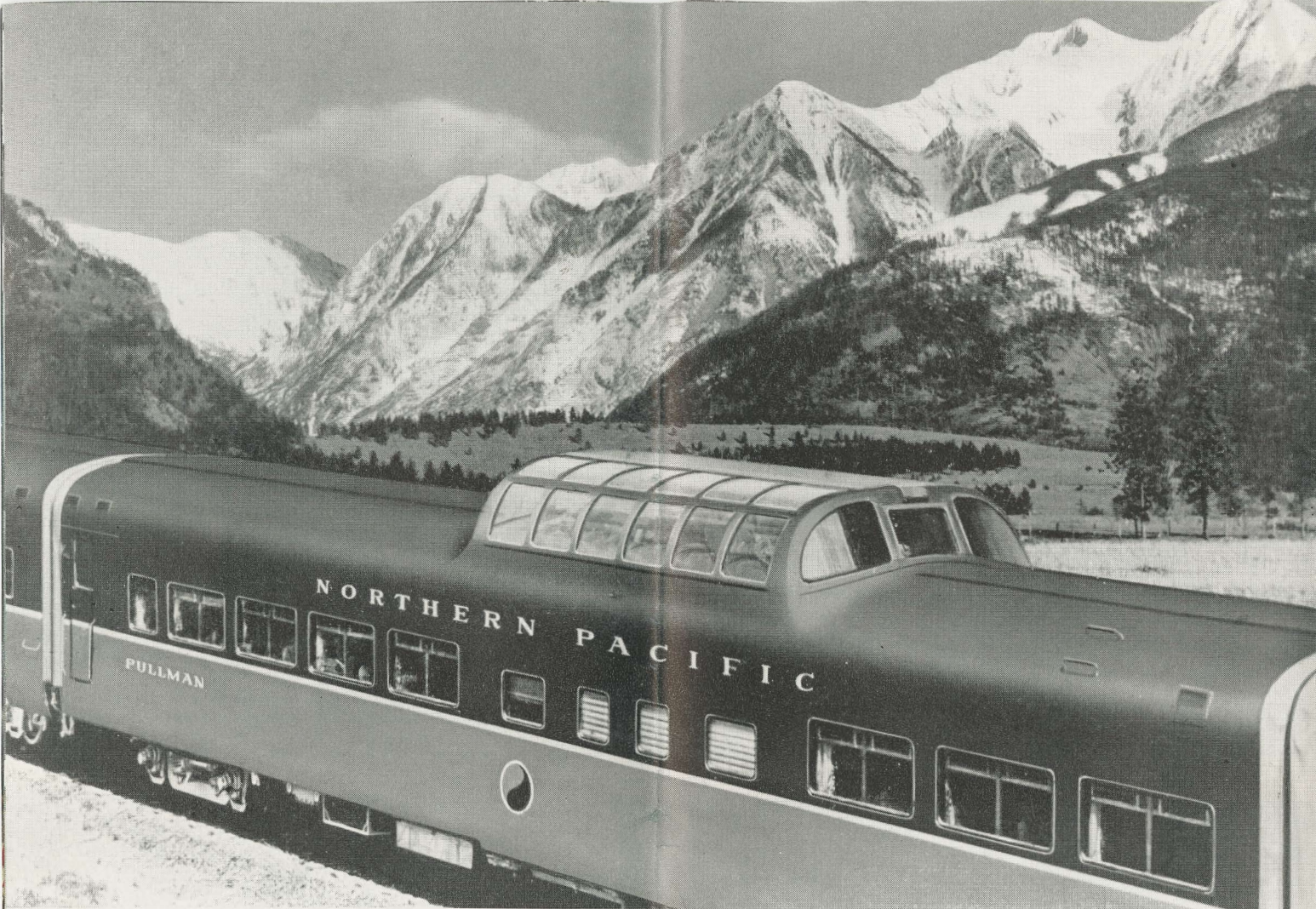
Take home big game photos for your album. Patient stalking can bring bear, buffalo, elk, antelope, deer, even wary mountain sheep within camera range.



Bus ride above the clouds that's the thrilling Red Lodge High Road route to Yellowstone. You cross the crest of the Beartooth Rockies at 11,000 feet!

Grand Canyon and Great Falls of the Yellowstone River are a thrilling climax to the Park tour.





New in the Northwest will be Northern Pacific's Vista-Dome sleeping cars.

4 DOMES - 96 Seats

The view's for you—and for everyone aboard the North Coast Limited. You need no reservation, for your Vista-Dome seat. You pay no extra charge. When all 20 Domes are in service late in the fall of 1954, each North Coast Limited will carry four Dome cars—two Dome coaches and two Dome sleeping cars—with a total of 96 Dome seats. Plenty of room for sightseers.

Between Chicago and the North Pacific Coast, you'll

ride the skyline smoothly, swiftly and quietly—in down-to-earth comfort, too. Special tinted glass softens the sunlight, air conditioning keeps the weather inside ideal. Luxurious interiors are decorated by Raymond Loewy Associates!





TETON NATIONAL PARK AND SUNLIGHT BASIN

The Magnificent Teton Mountains and the famous Jackson Hole country in Wyoming, may be easily included as an extra sight-seeing bonus, with your Northern Pacific Yellowstone tour.

Spectacular Sunlight Basin embraces some of America's most superb mountain scenery. Adjacent to Yellowstone Park, it may be conveniently visited by extending your park tour one day. ▼





You're invited to the chummy buffet-lounge, expressly for coach passengers. Enjoy a friendly card game, write letters or read. Light snacks and beverages are served from the buffet.



DAY-NITE COACHES

give you low-cost luxury

You stretch 'way out and take it easy in soft "Sleepy Hollow" seats on NP's money-saving Day-Nite Coaches with leg rests. Catch a cat-nap if you like; the adjustable seat backs, the extra leg room let you lie back almost at full length!

To add to your comfort, large luggage racks keep coats and baggage up out of the way. Each seat has its own individual reading light. Your comfortable coach seat is reserved for you for the length of your trip—at no extra cost.

Pick your own brand of fun on a **DUDE RANCH**

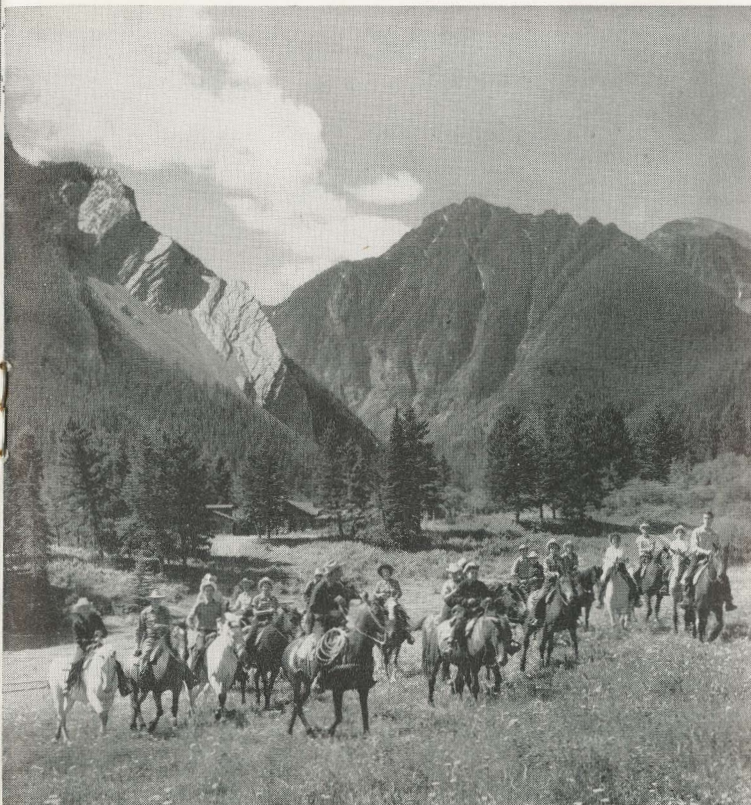


Want to loaf and take it easy? You can spend lazy hours under the clearest sky and brightest sun you've ever seen. Want to see the country? Climb aboard a sure-footed, well-trained western horse and ride to your heart's content, over open plains or along lofty skyline mountain trails. You can revel in unspoiled natural beauty changed very little from the virgin wilderness viewed by the first pioneers. Want to fish? Some of America's

great trout streams and quiet, secluded lakes are near at hand with hungry trout ready to give you a tussel. Want to join in roundups and branding? These activities are common to most ranches and are a colorful part of the old west.

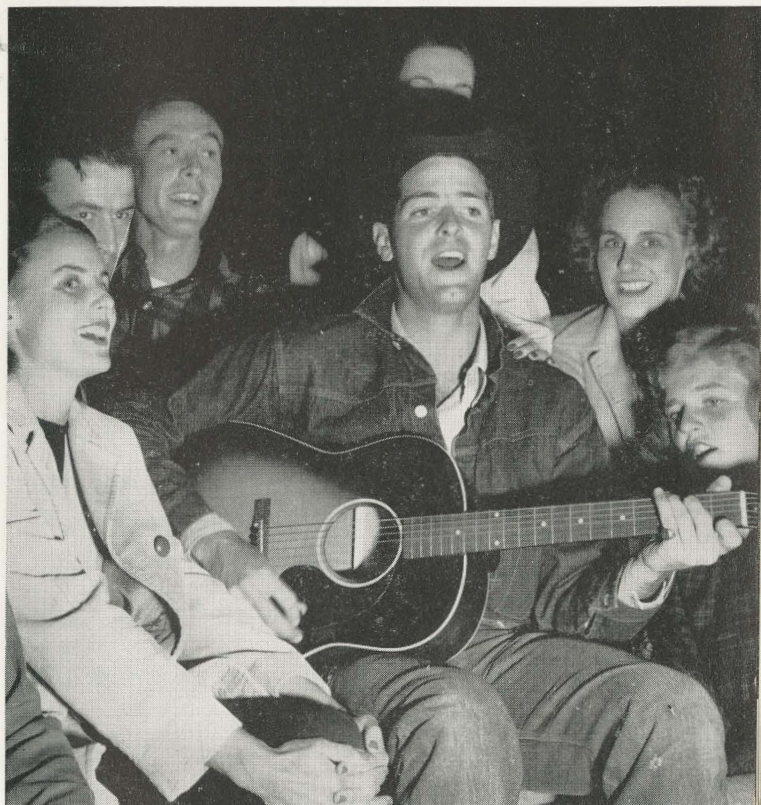
There are many fine dude ranches along the Northern Pacific. We know the owners and the various types of ranches and will be glad to help you choose one to suit your own taste.

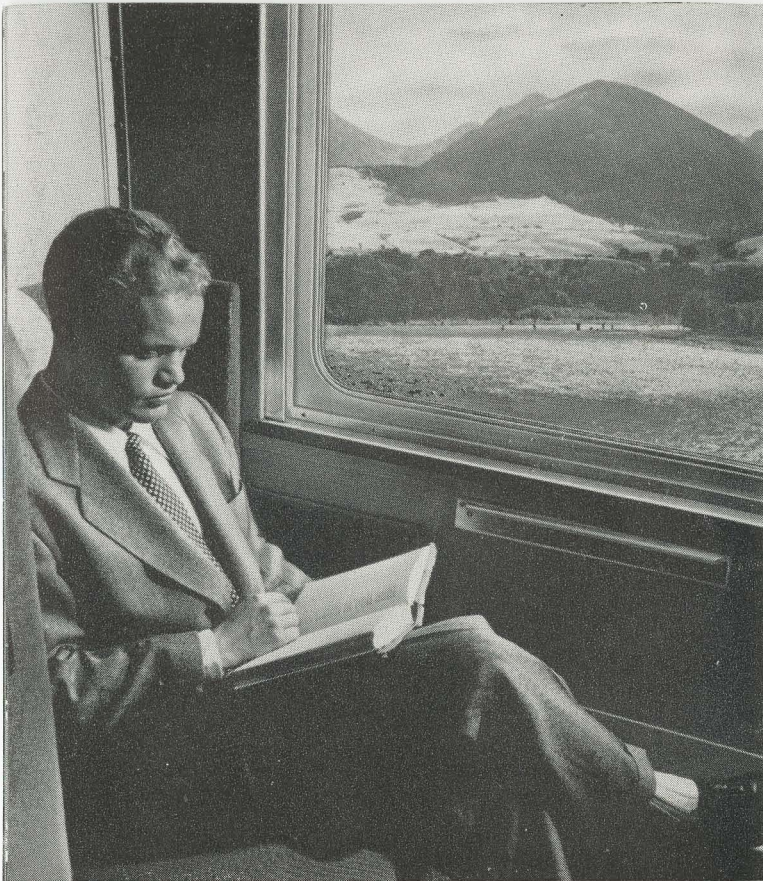
Headin' for the tall timber, across lush mountain meadows to lofty skyline trails. Horseback riding is the No. 1 activity on a western ranch.



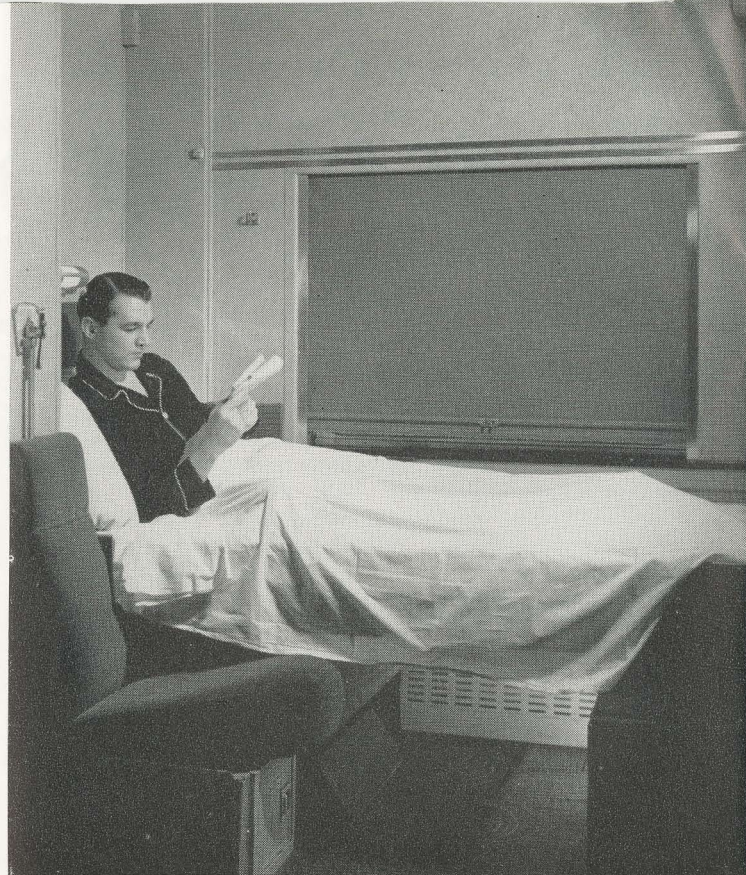
"Saddling up the rider." With a veteran cowhand to guide you, you'll soon feel right at home astride your trail-wise western pony.

O-o-oh that strawberry roan! You spend nights around a campfire, hear songs and stories of the Old West. There's always a pow-wow, barbecue or dance for an evening's fun.





Roomette for day travel



Roomette at night

Choose

ROOMETTES

for privacy plus convenience

If you're riding alone a Roomette or Duplex Roomette is made to order for you. You settle back in your seat with "weather" controls, ice water tap right at hand. Complete toilet facilities are also in your room.

Whenever you're sleepy, the turn of a handle brings out your big, wide Pullman bed—readymade. Duplex

DIAGRAM OF ALL-ROOM PULLMAN

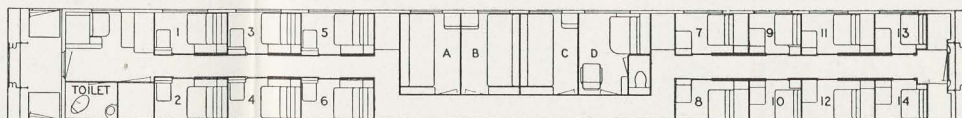
1, 2, 3, 4, 5, 6—Roomettes

A, B, C—Double Bedrooms

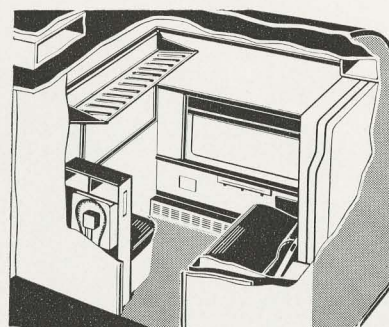
D—Compartment

7, 8, 11, 12—Upper Duplex Roomettes

9, 10, 13, 14—Lower Duplex Roomettes



Roomettes cost about 10% more than a standard Pullman lower; regular Roomettes are slightly larger, slightly higher in price.



The above sketch shows section of car walls cut away so arrangement of roomette may be seen, as it appears for day occupancy.

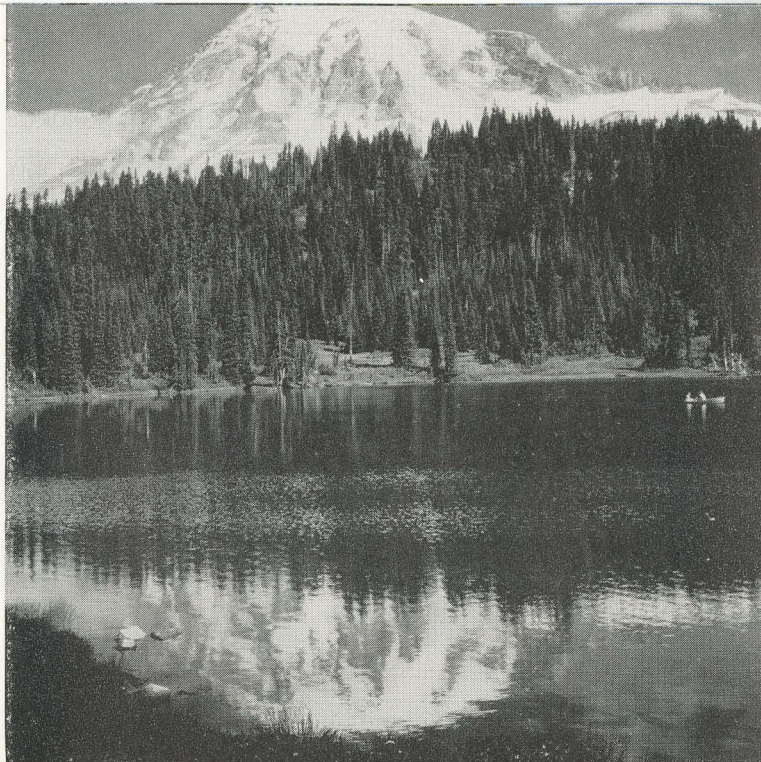
You'll find every kind of
vacation in the

PACIFIC NORTHWEST

You can climb a mountain, explore quiet trails in giant forests and swim in salt water—all in one day in this versatile vacation paradise. You can board a ship and sail sheltered seas, with mountain skyline views. You can visit the waterfront of a coast city with its teeming and colorful activities. If you are an angler, the great King Salmon or the wily trout are there in abundance to challenge your skill.

The mild climate is just as hospitable as the warm-hearted folks you'll meet. Days are warm, nights are cool. The air is spiced with the scent of evergreens, crisp and invigorating.

Largest Northwest city, gateway to Alaska and the Orient, is Seattle. Here you swim, sail or fish in salt-water Puget Sound or in fresh-water Lake Washington. On a land-and-water cruise you visit attractive parks and gardens, cruise the busy harbor.



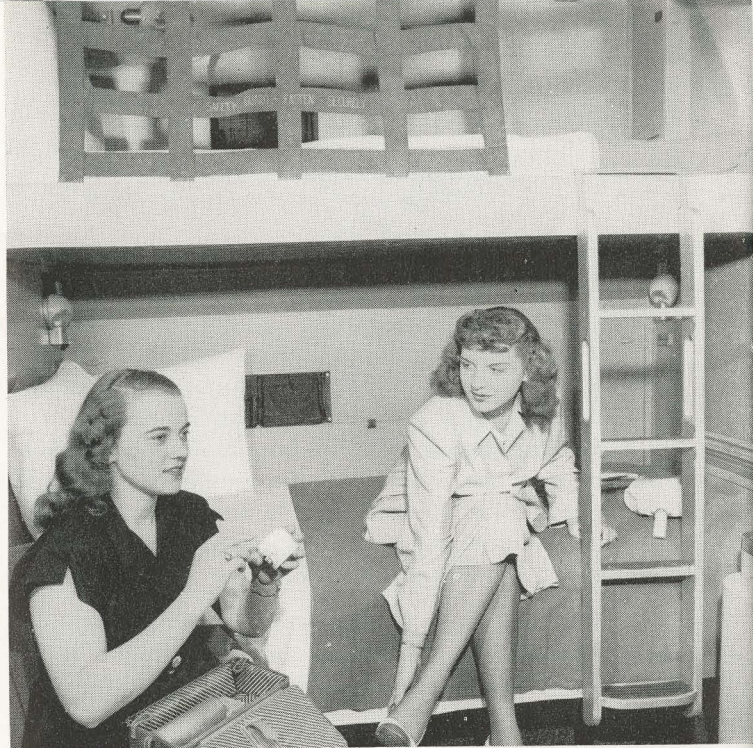
The mountain that was God. Eons ago Mt. Rainier was America's mightiest volcano. Later the 14,408-ft. peak was revered by Indians. Today, it's a year 'round recreation center.

Gateway to two national parks is Tacoma, lumber capital of the U.S. It's the closest point on Northern Pacific to Rainier Park and primitive Olympic Park as well.





Bedroom in day use



Bedroom at night

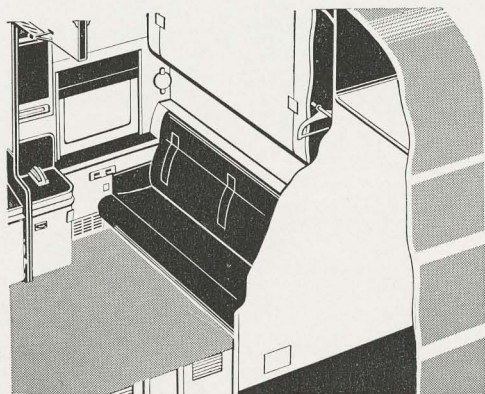
DOUBLE BEDROOMS

offer complete comfort for two

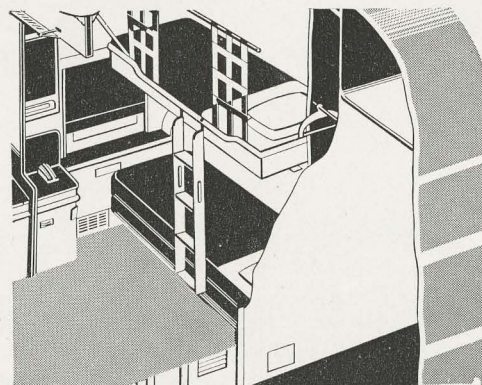
Traveling together? A double bedroom will suit you perfectly. Toilet facilities, baggage rack, closet, every-

thing you need is right in your room. Your full length sofa makes up into one bed, a second berth comes down above it.

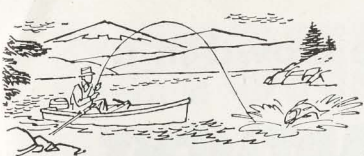
A sliding partition lets you occupy two bedrooms en suite—ideal for a family of four.



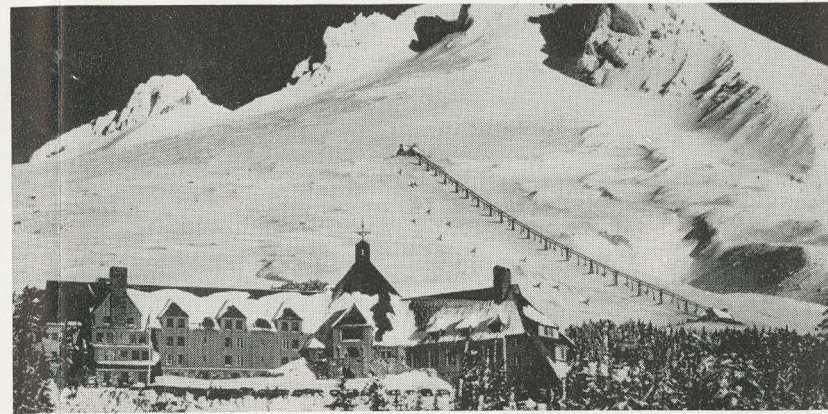
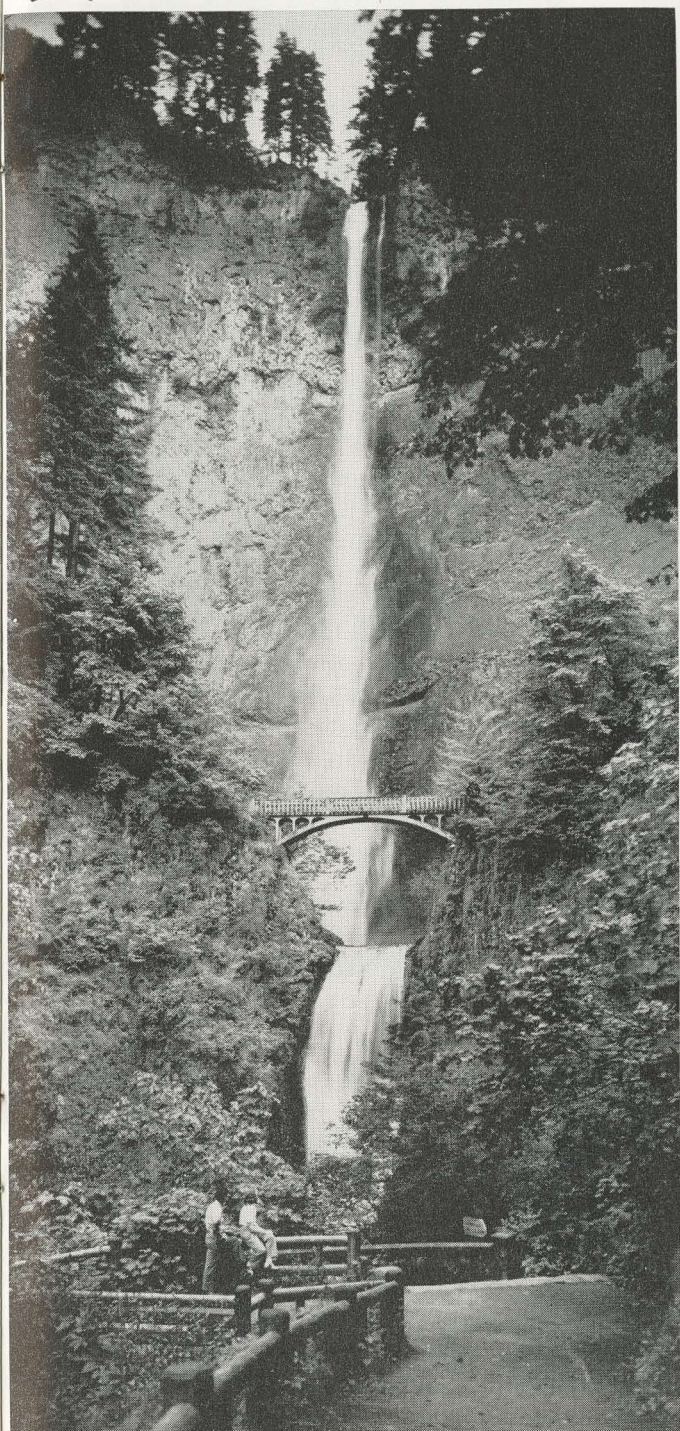
Cut-away sketch shows the double bedroom as it appears for daytime occupancy.



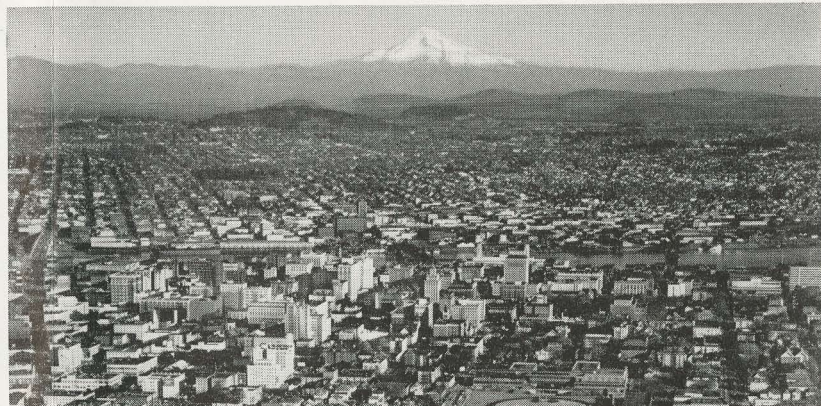
Cut-away sketch shows arrangement of double bedroom with beds made up.



PACIFIC NORTHWEST



Timberline Lodge, less than two hours drive from Portland, sits 6,000 feet high on Mt. Hood—one of America's popular mountains for skiing and climbing.



Portland, with snow-crowned Mt. Hood on its skyline, is one of the Pacific Coast's most important ports. Its rose gardens are world-famous, as is the annual Rose Festival held each June.



The magnificent **Columbia River Highway** is a marvelous sightseeing trip from Portland. You'll also see the Columbia for many miles from your **VISTA-DOME** seat on the train.

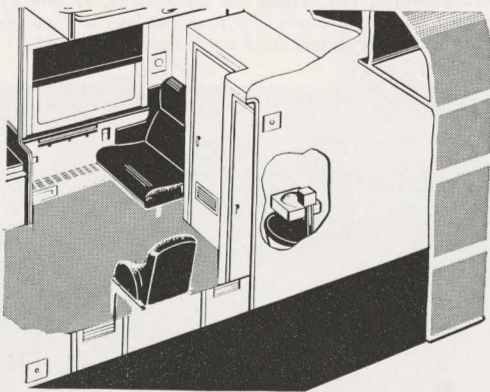
620-ft. Multnomah Falls, highest of eleven falls in eleven miles along the Columbia River, is typical of nature's lavish beauty in the Pacific Northwest.

Three's no crowd in a **COMPARTMENT**

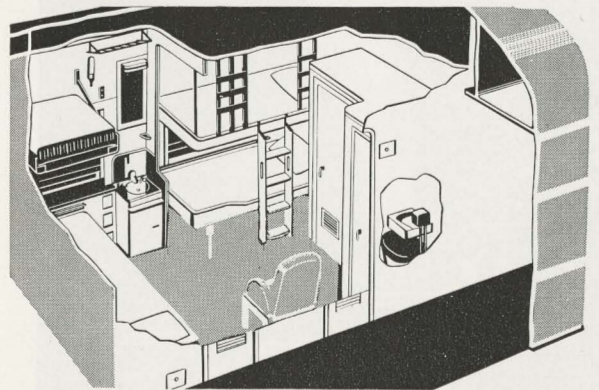
If you'd like the largest private room on the North Coast Limited—that's a compartment. Its broad sofa and extra arm chair give you plenty of room for three by day. All conveniences are included—with the lavatory and toilet enclosed in a separate room.

The unit sleeps two adults regularly, but can easily accommodate an extra child. For larger families a compartment and bedroom may be combined by opening a sliding partition, providing deluxe accommodations at drawing room rate.

Low "Family Plan" Fares make possible substantial savings for families traveling together. Here's how it works: head of the family pays full fare, other parent half fare. Children 12 through 21, each pay half fare. Children 5 through 11 pay one-quarter fare. Family rates are available for trips starting on Monday, Tuesday or Wednesday of each week.

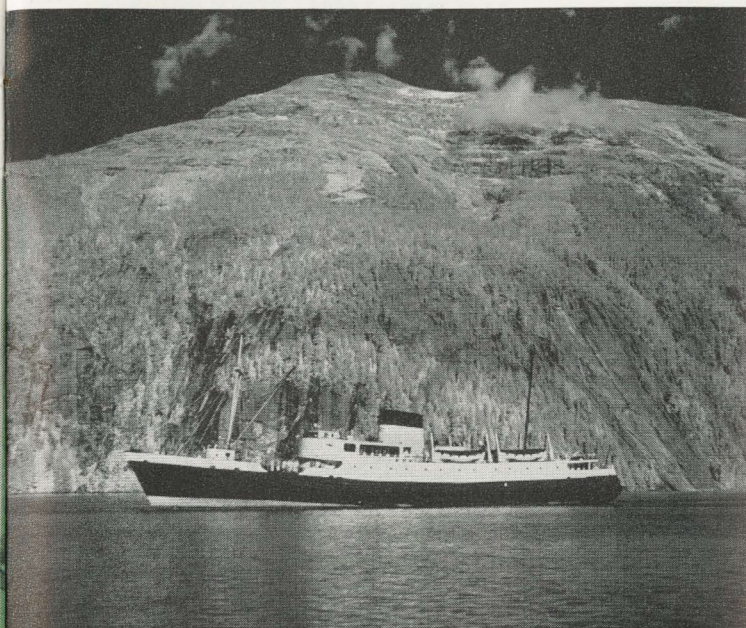


Cut-away sketch shows the compartment as it appears for daytime occupancy.



Cut-away sketch shows compartment and bedroom ensuite with beds made up.

BEYOND MAIN STREET OF THE NORTHWEST



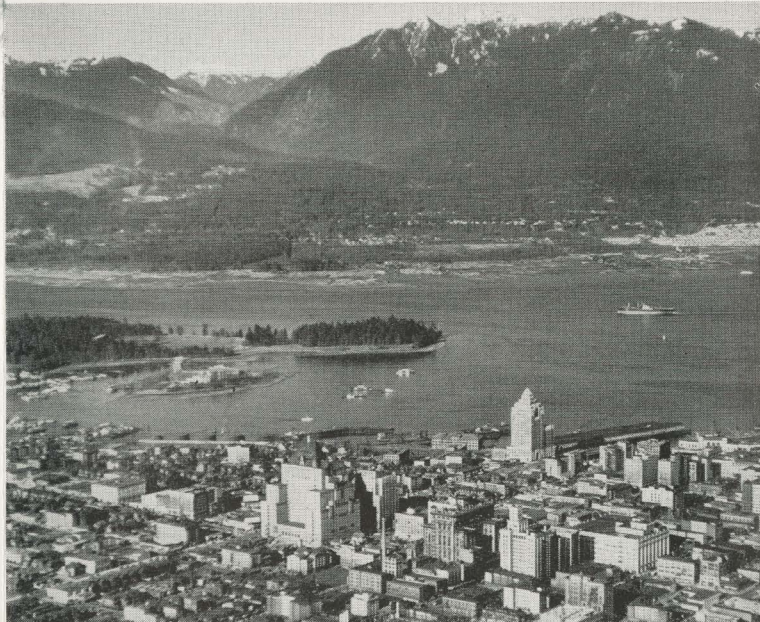
From Seattle you can board an Alaska-bound liner, cruise the sheltered Inside Passage past gleaming fjords and glaciers to the storybook Land of the Midnight Sun.



In Alaska you visit quaint Eskimo villages, Gold Rush towns. Even in busy cities, at the brink of the wilderness you feel the strange spell of the Yukon under the Northern Lights.



Going to California? Double your fun at little extra cost by traveling one way via the Pacific Northwest on the Vista-Dome North Coast Limited.



Vancouver, British Columbia is a pleasure trip by train or boat from Seattle. Victoria, "a bit of old England" also is an interesting sidetrip by steamer.



Luxurious new surroundings! Famous Raymond Loewy Associates designed and decorated both the handsome Dining Car above and the smart Observation-Lounge below.



**Sit down to
wonderful western
meals in the**

DINER

Here's where you'll enjoy Northern Pacific's old-fashioned hospitality at its best. Courteous, well-trained waiters serve you superb food—fresh-baked breads and pastries, the Northwest's blue-ribbon fruit and vegetables, fish and meat—and of course the fabulous "Great Big Baked Potato."

**The pleasure's all
yours in the**

LOUNGE

You'll meet the friendliest kind of people in the Pullman observation-lounge car. You'll find the chairs big and soft, the drinks cool and refreshing. Write a letter if you like, read a magazine, get up a card game or just enjoy congenial conversation. The lounge is your club room on wheels, designed for fun and good fellowship. On the Vista-Dome North Coast Limited there are two spacious lounges—one for Pullman passengers, another for Coach travelers.



Mt. St. Helens and Spirit Lake, Washington

Plan Your NORTHWEST ADVENTURE now . . .

We'll be glad to give you specific fares for your trip on the Vista-Dome North Coast Limited—or detailed information on any resort or vacation spot along the Main Street of the Northwest. There is no

obligation. Just write G. W. Rodine, Passenger Traffic Manager, Northern Pacific Railway, St. Paul 1, Minn., or contact any of our travel offices which are listed below.

NORTHERN PACIFIC TRAVEL OFFICES

ABERDEEN, WASH.....Room 5, Union Station
ATLANTA 3, GA.....1313 Healey Bldg.
BELLINGHAM, WASH...Northern Pacific Station
BILLINGS, MONT.....Northern Hotel
BOSTON 16, Room 8, Little Bldg., 80 Boylston St.
BUFFALO 3, N. Y.....795 Ellicott Square
BUTTE, MONT.....405 Metals Bank Building
CHICAGO 4, ILL.....73 E. Jackson Blvd.
CINCINNATI 2, OHIO.....2011 Carew Tower
CLEVELAND 13, OHIO 1334 Terminal Tower Bldg.
DALLAS 1, TEXAS.....607 Kirby Bldg.
DENVER 2, COLO....703 Railway Exchange Bldg.
DETROIT 26, MICH.....810 Lafayette Bldg.
DULUTH 2, MINN.....Room 111, Union Station
EVERETT, WASH.....Northern Pacific Station

FARGO, N. D.....Northern Pacific Station
HELENA, MONT.....Placer Hotel
KANSAS CITY 6, MO..Room 206, 1025 Grand Ave.
LEWISTON, IDAHO....Room 10, Union Station
LOS ANGELES 14, CAL..Five Ten West 6th St.
MILWAUKEE 3, WIS.....913 Majestic Bldg.
MINNEAPOLIS 2, MINN.....701 Marquette Ave.
MISSOULA, MONT.....Northern Pacific Station
NEW YORK 20, N. Y...Room 534 630 Fifth Ave.
OAKLAND 12, CAL.....815 Central Bank Bldg.
OMAHA 2, NEB.....309 W. O. W. Bldg.
PASCO, WASH.....Northern Pacific Station
PHILADELPHIA 9, PA..Room 926, 123 S. Broad St.
PITTSBURGH 22, PA.....608 Park Bldg.
PORTLAND 4, ORE.....439 S. W. 6th Ave.

ST. LOUIS 2, MO.....919 Boatmen's Bank Bldg.
ST. PAUL 1, MINN.....Hotel St. Paul
SAN FRANCISCO 5, CAL..1003 Monadnock Bldg.
SEATTLE 1, WASH.....1401 Fourth Ave.
SPOKANE 4, WASH.....701 Sprague Ave.
SUPERIOR, WIS.....Union Depot
TACOMA 2, WASH.....118 So. 9th St.
TORONTO, ONT.....Room C-29, Union Station
VANCOUVER, B. C.....Room 207, 475 Howe St.
VICTORIA, B. C.....912 Government St.
WALLA WALLA, WASH..Northern Pacific Station
WASHINGTON 5, D. C.....500 Shoreham Bldg.
WINNIPEG, MAN.....204 Paris Bldg.
YAKIMA, WASH.....Northern Pacific Station



YOU'LL HAVE FUN ON THE
Vista-Dome
NORTH COAST LIMITED

