

*New*  
YELLOWSTONE  
*Service*



*New*  
LLOWSTONE  
*Service*



BEAUTIFUL LIVINGSTON-GARDINER ROAD

MAIN STREET OF THE NORTHWEST

ROUTE OF THE Streamlined  
NORTH COAST LIMITED

# New and Beautiful

---

BEGINNING June 20, 1949, the Northern Pacific will inaugurate new sightseeing bus service for Yellowstone Park travelers to better reveal to them the majestic and inspiring mountain views between Livingston, Montana and the Gardiner Gateway.

Yellowstone Park is wonderful in itself but the high mountain country about it holds some of the world's greatest, most dramatic scenery. The approach to the Park from the North, in sightseeing buses, via Livingston and Gardiner, will unveil this fabulous region for the appreciation of the traveling public.

From Livingston, up the magnificent Yellowstone River Canyon and through Paradise Valley to Gardiner Gateway, Yellowstone Park, is an unforgettable scenic experience. You will exclaim "I have never seen such beautiful mountain country!" Here is a "Dream Land" of Mother Nature's loveliest landscapes.

New Northern Pacific sightseeing buses follow the Yellowstone River between two of Montana's great Rocky Mountain ranges—the Absaroka and Gallatin. The river is deep and fast. Occasionally it narrows into a rocky-walled gorge where the water cascades through in a tumbling mass. At other times it spreads out over considerable width and the bottom can be plainly seen except during the season when rapidly melting snows from the lofty peaks, running off in swollen mountain streams, cloud the river with their burdens of silt. Evergreen trees and yellow aspen groves shelter the banks and add color to the picture.

Here is a veritable parade of peaks for 57 miles. Livingston is 4510 feet above sea level, Gardiner 5287. Mountains rise 6000 feet in almost continuous heights on both sides of the road. To the East: Livingston Peak, Mt. Delano, Mt. Cowan (11,190 ft.), Chico Peak, Emigrant Peak (10,960 ft.), Dome Mountain, Monitor Peak, Sunset Peak, Sheep Mt. (10,268 ft.), and others of the Absarokas. To the West of the road

on the Gallatin Range side: Blackmore (10,196 ft.), Koch Peak (11,293 ft.), Cinnabar Mt., Electric Peak (11,155 ft.), Big Horn Mt. (9,900) and Big Sheep Peak (10,070). Pine, spruce and cedar forests beautify the slopes of these mighty hills. White limestone, gray granite and black basalt volcanic rock rise above timberline into perpetual snows. Clouds swirl about the peaks in the bluest skies you'll ever see.

Paradise Valley, irrigated by mountain streams, is green and rich with alfalfa and ripening grain. Cattle and sheep dot the mountain sides. You'll understand why they call this "Paradise" as you ride the first 25 miles from Livingston. Half way between Livingston and Gardiner, near Emigrant, west of the road, high volcanic basalt terraces mark the "Buffalo Jump," where Indians drove herds of Bison over the cliff in autumn and then camped for weeks to secure their food and warm clothing supplies for winter. This area has been a treasure ground for collectors of ancient Indian weapons.

Look west near Corwin Hot Springs, seven miles from Gardiner—there's Cinnabar Mt., marked by a dark red streak of mercurial shale—this is the "Devil's Slide," cut between rocky walls turned up on edge. The fable is that Satan, in his terrified haste to escape from the mischief of volcanic eruptions he started and the fury of the Geysers in Yellowstone, and the Lord's angry lightning which chased him from Electric Peak, tripped and sat down on a sharp Cinnabar rock. His slide, pell-mell down the mountain, left a blood-red trail to the Yellowstone River, where he cooled off his blistered satanic seat. Even "The Sphinx," a rocky monument just north of Cinnabar, still smiles.

The entire trip between Livingston and Gardiner, 57 miles by paved road, is thrilling and magnificent! The Northern Pacific now provides modern sightseeing buses so that travelers may enjoy this wonderful addition to their Yellowstone vacation, at no additional cost above their railroad tickets to and from the Park.



**Modern sightseeing buses of this type will operate this summer  
between Livingston and Gardiner, Montana.**

**THE SCHEDULE—(Daily, June 20-September 11)**

**SOUTHBOUND**

Lv. Livingston ... 8:10 am  
Ar. Gardiner ... 10:15 am

**NORTHBOUND**

Lv. Gardiner .7:30 pm  
Ar. Livingston 9:00 pm

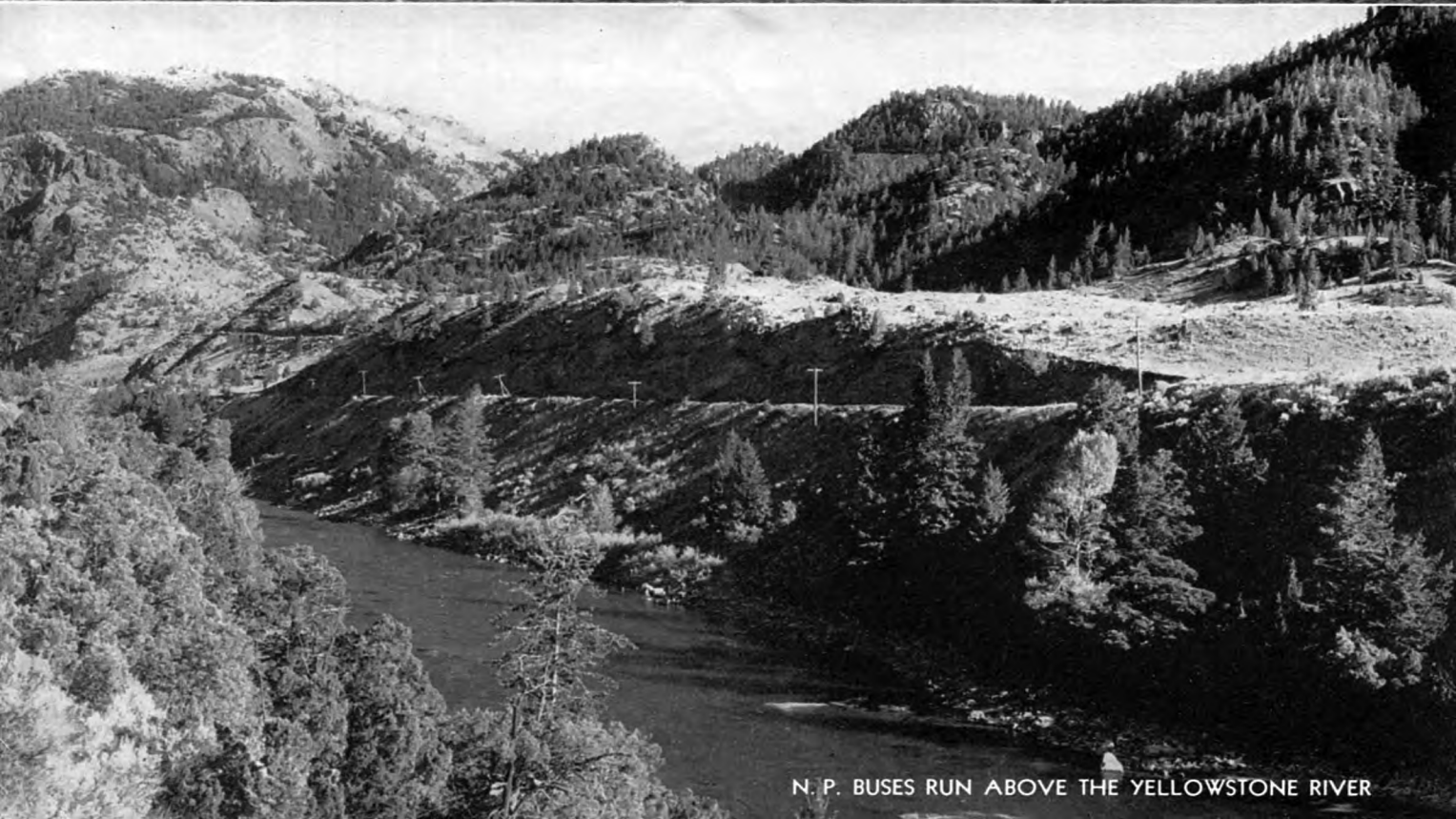
These buses will connect at Gardiner with the sight-seeing buses of the Yellowstone Park Company for tours of Yellowstone.







FISHING IN THE YELLOWSTONE RIVER



N. P. BUSES RUN ABOVE THE YELLOWSTONE RIVER



**Emigrant Peak (10,960 feet altitude) is one of the prominent mountains in the Absaroka Range seen on the way to Gardiner.**

JUST 45 miles south of Livingston, at a narrow place in the canyon of the Yellowstone River, a pioneer prospector and hunter named Yankee Jim George, put up a fence and built a toll road in 1870, expecting to collect tribute from everyone visiting Yellowstone Park. Although Yankee Jim defended his canyon with a shotgun, he was eventually ousted and bought off by the Northern Pacific Railroad, which opened Yellowstone Park for the free travel of the American people. Below—a portion of Yankee Jim Canyon as it appears today, and (inset) Yankee Jim, ready to collect his tolls.





THE DEVIL'S SLIDE



NORTHERN PACIFIC STATION — GARDINER





ELECTRIC PEAK — 11,155 FEET ALTITUDE



GARDINER GATEWAY —  
ENTRANCE TO WONDERLAND © HAYNES

# TRAVEL OFFICES

of the Northern Pacific Railway are conveniently located in most large cities and are at your service in planning vacation or business trips. We will be glad to assist with reservations, literature and details of cost and schedules. No obligation.

**Atlanta 3, Ga.** 1313 Healy Bldg.  
Phone, Lamar 8119

**Boston 16.** Room 8, Little Bldg., 80 Boylston Street  
Phone, LI. 2-8367

**Buffalo 3, N. Y.** 795 Ellicott Square  
Phone, Wash. 6822

**Chicago 4.** 73 E. Jackson Blvd.  
Phone, Wabash 2-1271

**Cincinnati 2.** 615 Gwynne Bldg.  
Phone, Cherry 5938

**Cleveland 13.** 1334 Terminal Tower  
Phone, Main 2846

**Dallas 1, Texas.** 901 Southwestern Life  
Phone, Riverside 3667

**Denver 2, Colo.** 316 Railway Exchange Bldg.  
Phone, Cherry 3743

**Detroit 26, Mich.** 810 Lafayette Bldg.  
Phone, Woodward 2-4934

**Duluth 2, Minn.** Room 111, Union Station  
Phone, Melrose 8353

**Fargo, N. D.** Northern Pacific Station  
Phone, 7544

**Kansas City 6, Mo.** Room 206, 1025 Grand Ave.  
Phone, Victor 3141

**Los Angeles 14.** 519 Associated Realty Building  
Phone, Trinity 2321

**Milwaukee 3.** 913 Majestic Bldg.  
Phone, Daly 2815

**Minneapolis 2.** 701 Marquette  
Phone, Main 2213

**New York 20.** 630 Fifth Ave., Room 534, International Bldg.  
Phone, Circle 6-4053

**Oakland 12, Cal.** 815 Central Bank Bldg.  
Phone, Glencourt 1-8717

**Omaha 2, Nebr.** 309 W. O. W. Bldg.  
Phone, Atlantic 7177

**Philadelphia 9.** 123 So. Broad St., Room 926  
Phone, Kingsley 5-0181

**Pittsburgh 22, Pa.** 608 Park Bldg.  
Phone, Atlantic 0306

**Portland 4, Ore.** 439 S. W. 6th Ave.  
Phone, Capitol 1311

**St. Louis 2, Mo.** 601 Boatmen's Bank  
Phone, Garfield 3280

**St. Paul 1, Minn.** 4th & Robert Sts.  
Phone, Cedar 7773

**San Francisco 5.** 657 Market St.  
Phone, Sutter 1-1078

**Seattle 1.** 1401 Fourth Ave.  
Phone, Elliott 5560

**Spokane 8, Wash.** 701 Sprague Ave.  
Phone, Main 5321

**Superior, Wis.** N. P. Station  
Phone, 7602

**Tacoma 2, Wash.** 118 So. 9th Street  
Phone, Broadway 1121

**Toronto, Ont.** Room C-29, Union Station  
Phone, Elgin 2028

**Vancouver, B. C.** 207 Stock Exchange Bldg.  
Phone, Marine 2461

**Victoria, B. C.** 912 Government St.  
Phone, B-4277

**Washington 5, D. C.** 500 Shoreham Bldg.  
Phone, National 8670

**Winnipeg, Man.** 204 Paris Bldg.  
Phone, 97946

**Yakima, Wash.** N. P. Station  
Phone, 9151



**NORTHERN PACIFIC RAILWAY**  
*Main Street of the Northwest*