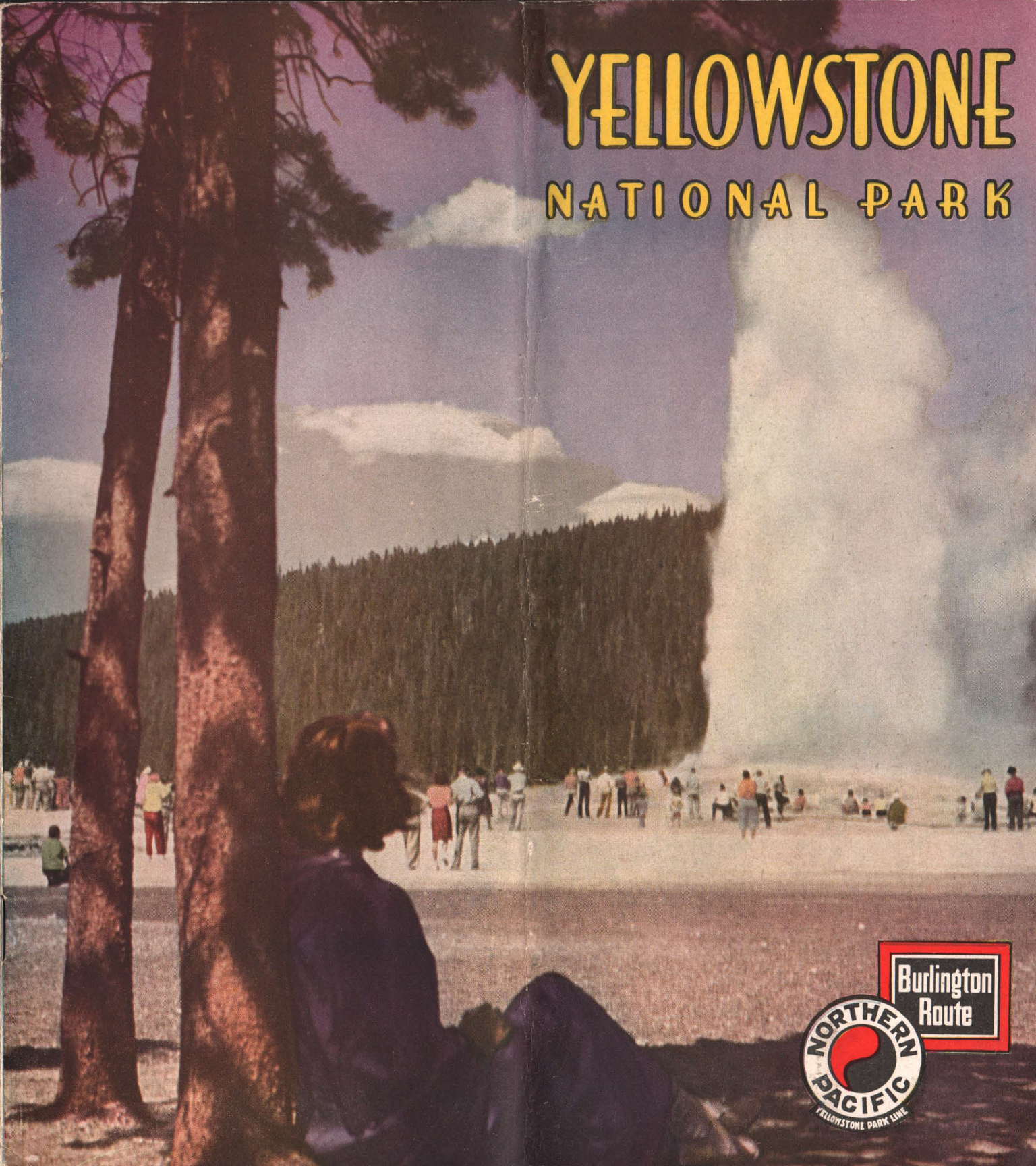


# YELLOWSTONE

## NATIONAL PARK



Burlington  
Route



Lower Falls of the Yellowstone.

NATIONAL PARK SERVICE PHOTO

# YELLOWSTONE NATIONAL PARK



A  
T  
RIBUTE

BY EMERSON HOUGH, AUTHOR OF "THE COVERED WAGON"

OUR great National Parks are sections of the old American wilderness preserved practically unchanged. They are as valuable, acre for acre, as the richest farm lands. They feed the spirit, the soul, the character of America.

Of all the National Parks Yellowstone is the wildest and most universal in its appeal. There is more to see there—more different sorts of things, more natural wonders, more strange and curious things, more scope, more variety—a longer list of astonishing sights—than any half dozen of the other parks combined could offer. Daily new, always strange, ever full of change, it is the circus park. Nature's continuous Coney Island. It is the most human and the most popular of all the parks.

But Yellowstone is more, and very much more, than that, especially in its new and vastly enlarged form today. As it now is constituted, it is the noblest sweep of unspoiled and yet fully accessible mountain country to be found within or without our National Park limits. Here, indeed, you may see the ROCKIES and as you look there will arise in your soul the phrase, "As it was in the Beginning!" Happily also follows the remainder of the choral chant, "Is now, and ever shall be!" What price can you put on that? Yellowstone is at once the easiest, the most feasible, the most human of all the parks, and also the wildest and least changed. No other park, and no other mountain region within our borders, holds such numbers, or such numbers of species, of native American big game.

The bears of Yellowstone have made it famous, as has its Painted Canyon. Its vast elk herds—the last hope of that species in America—have no like anywhere in our country now. The bighorn sheep, rarest and wildest of our big game animals, still lives its old life there. The wise and busy beaver builds its dams as it always did. The antelope still may be seen—shadowy, fleet. The two species of American deer still thrive. Lastly, there still are to be seen hundreds of the noblest of all our wild animals, the bison. Who can measure the value of these native treasures? Where else can you see them? What other country, what other printed page, can teach you so much as a week's reading of Nature's page here?

And you may travel and live in perfect comfort! That is almost the most astonishing thing about Yellowstone. You may photograph a wild bear and eat a course dinner within the same hour. You may see the Canyon and geysers and the Grand Tetons and a dozen bold mountain lakes and streams and yet sleep in as good a bed as you left at home. Literally, the world has nothing like this. Other parks have one attraction—several; but none has all these. And no discomfort or danger or weariness will mar your day's delights.

I know the Yellowstone and love it all. So will you love it when you know it. And you ought to know it. That is part of your education as an American, as well as one of your American privileges. Thank God, you Americans, that Yellowstone is now and ever shall be your own! Thank God that there you still can see a part of the Old West—your own West—as it was in the Beginning!



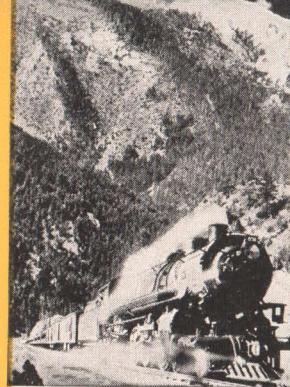
Above—Northern Pacific train pulling into the rustic station at Gardiner, Montana.

Center—Just arrived! These happy vacationists prepare to board park bus for tour of Wonderland.

Below—Billings, Montana, a colorful western city, is diverging point for Yellowstone visitors entering the park via Red Lodge and Cody Gateways.



# 1 MOST DIRECT AND FASTEST SERVICE TO *Yellowstone Park*



Only Burlington-Northern Pacific serves three of Yellowstone's famous gateways... Gardiner, Cody and Red Lodge... and only Burlington-Northern Pacific offers a choice of three scenic routes to or from the Park.

The most direct service to Yellowstone is via the "Route of the North Coast Limited", traveling along the Upper Mississippi River, through St. Paul-Minneapolis, Minnesota's wooded farmlands, the Bad Lands of North Dakota and the ranch country of Montana.

Another delightful way to Yellowstone is via the Burlington through Nebraska, alongside the Black Hills of South Dakota, past the Big Horn Mountains of Wyoming and the scene of Custer's Last Stand.

A third route is via the Burlington's "Denver Zephyr" to Denver, thence via Cheyenne, Casper, Wind River Canyon and Big Horn Basin to Cody. The Denver-Cody service also connects with the Burlington Lines'

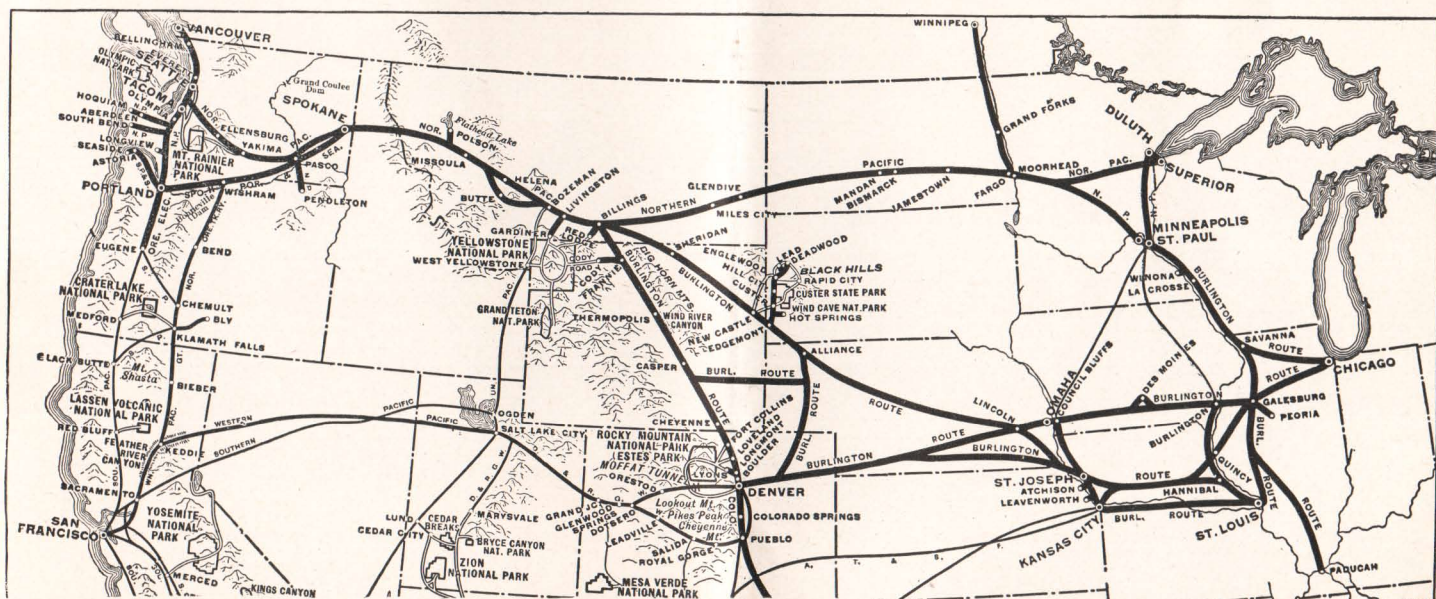
"Texas Zephyrs" to and from Fort Worth, Dallas, Houston and the Gulf Coast.

For Yellowstone-bound travelers from the Pacific Coast, the eastbound trains on the Northern Pacific Railway provide fast service from Portland, Tacoma and Seattle, with through sleeping car between Seattle and Gardiner.

Throughout the Park season, Burlington-Northern Pacific trains carry Pullmans daily for the convenience and comfort of Yellowstone travelers from Chicago, Twin Cities and East. From Billings, side trip is made to Red Lodge and from Livingston, there is a 54-mile scenic side trip to Gardiner. Between Billings and Cody, the Burlington transports the through Chicago-Cody Pullmans.

Pullman service also is available to Yellowstone from numerous other points, including Omaha, St. Joseph, Kansas City and St. Louis.

For up-to-the-minute schedules, consult any railroad ticket agent or travel bureau.

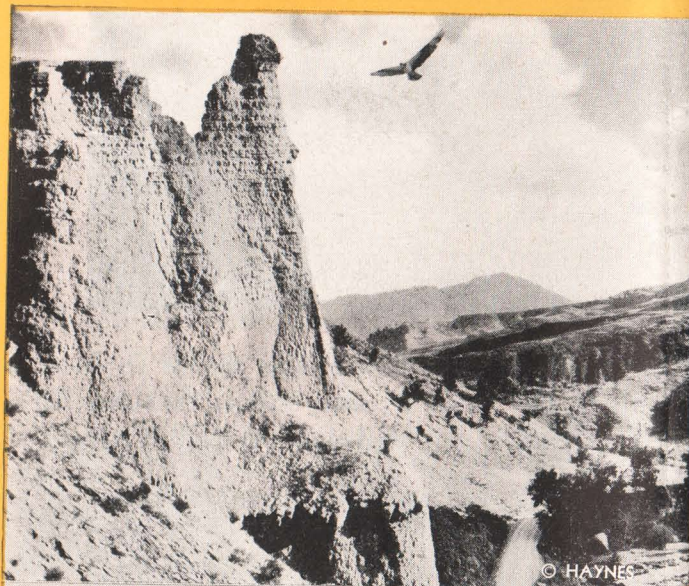


Burlington-Northern Pacific offers maximum diversity in Scenic Routes to Yellowstone and other Western Recreational Areas



Threshold of Yellowstone's Dramatic Tour is Gardiner Gateway spanned by the big stone arch President Theodore Roosevelt dedicated in 1903.

# GATEWAYS TO *Wonderland*



## GARDINER GATEWAY

Gardiner Gateway, Montana, is the beginning of the dramatic Yellowstone tour which moves progressively among fantastic sights of the Park to the splendor and climax of the Golden Grand Canyon of the Yellowstone River.

For more than half a century this gateway has been the entry point of visitors from many states and nations, for princes, potentates and presidents. It opened Yellowstone Wonderland to the world in 1883.

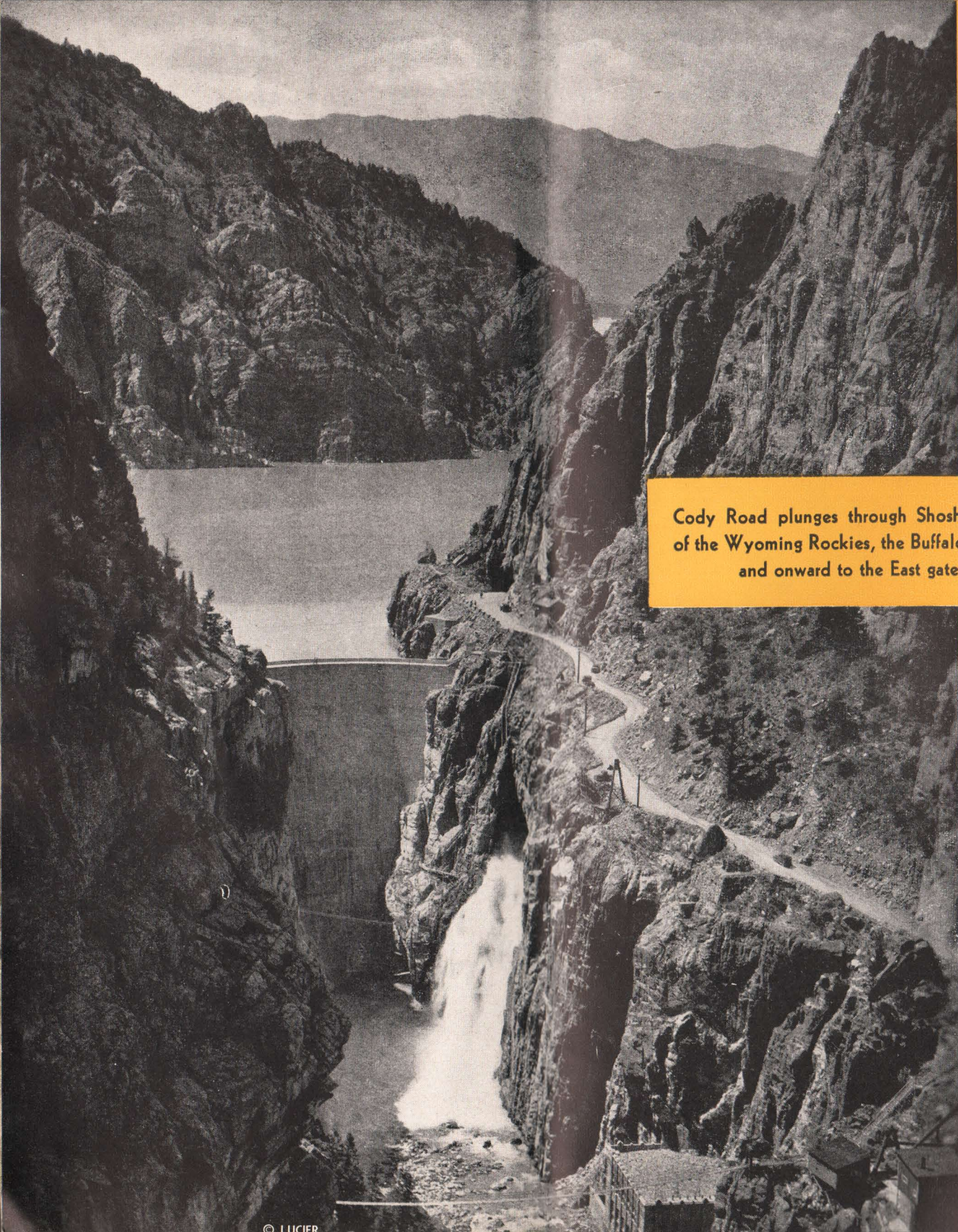
Service to Gardiner from principal points is maintained by the Northern Pacific during the Park vacation season, June 20 to September 9. The route leads into the Rockies via Livingston, Montana, followed by a scenic 54-mile trip along the dancing Yellowstone River, the peaks of the Absaroka Range to the east, the majestic Gallatin Range to the west.

You'll find Gardiner a natural portal to Yellowstone's mountain walled beauties and mysteries.

Left—Eagle Nest Rock

Below—Gardner Canyon





Cody Road plunges through Shoshone Canyon of the Wyoming Rockies, the Buffalo Bill country and onward to the East gateway.



Strange rock formations—men, animals and walled cities—tower in red volcanic stone above the Shoshone.



## CODY GATEWAY

The Cody Road, sensational mountain highway of the West, extends 80 miles between the frontier town of Cody, Wyoming, through the heart of the untamed Buffalo Bill country to supply a magnificent gateway on the east to Yellowstone National Park.

Ascending gradually from Cody, the road plunges through sheer-walled Shoshone Canyon, skirts the shores of mountain-fringed Buffalo Bill Reservoir, and runs for miles beside the laughing waters of Shoshone River with fantastic rock shapes towering overhead. The highway crosses the Park boundary seven miles east of Sylvan Pass, crest of the Absaroka Range, and connects with the Grand Loop Highway near Lake Hotel. Ever since its opening in 1916, the Cody Road has been ranked among the most thrilling experiences of a Yellowstone tour.

Cody is situated on the Burlington Route and, during the Park season, has daily sleeping car service to and from Chicago on the Northern Pacific via Billings as well as via the Burlington to and from Missouri River points and Chicago. Cody-Deaver bus makes direct connection with Billings-Denver sleeping car via the Burlington Lines.

Below—Up over the lofty Absarokas, this lone highway challenges the wilderness.  
Center—The winding ribbon of road, hewn and tunneled in granite, beckons around Buffalo Bill Reservoir to Yellowstone beyond.

Amazing switchbacks of the Red Lodge  
HIGH Road traverse fifteen miles to gain a  
mile in altitude above Rock Creek Canyon.





Rustic Northeast Entrance Checking Station in picturesque surroundings guards the new Red Lodge entrance.

## RED LODGE HIGHROAD— NEWEST GATEWAY TO YELLOWSTONE

Red Lodge HIGH Road, loftiest of all Yellowstone Park approaches, is the newest attraction of the Yellowstone tour. Opening to railroad travelers with the 1937 season, it has added to Yellowstone wonders the grandeur of "sky-line" alpine panoramas.

Altimeter readings show this road to be one of the highest in all the West. For approximately 21 miles it skims the top of the Beartooth Rockies at an altitude of more than 9,000 feet. The pinnacle of 11,000 feet is reached at one point and mile after mile its altitude hovers around the 10,000-foot mark. Two hundred fifty miles of mountain peaks can be seen with half a turn of the head.

This is a "Sky-Ride" in the Montana-Wyoming Rockies by Northern Pacific and Yellowstone Park sight-seeing motor coaches. The most thrilling scenery appears between Red Lodge, Cooke and the park boundary, but the irrigated ranching country between Billings and Red Lodge also is very interesting to travelers. Billings is on the N. P. main line.

Pilot and Index Peaks, landmarks of the Red Lodge country since Jim Bridger's time a century ago, rise nobly in the highway panorama.

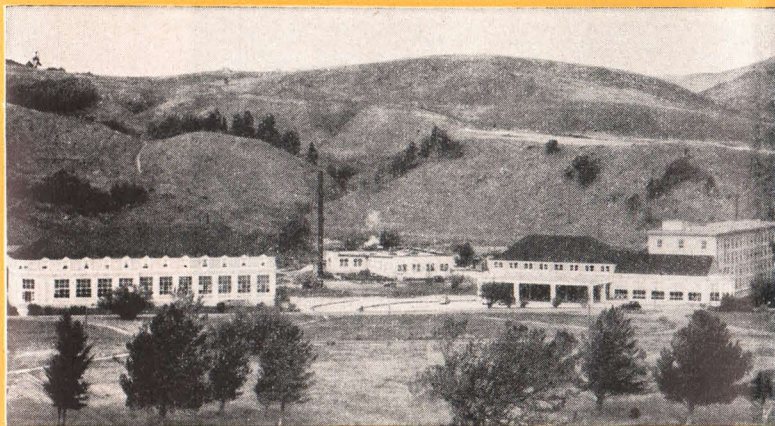


You can stand right in your sightseeing coach and look down the foaming gorge of the Firehole River, only one of many mountain streams seen.

# IN AND ABOUT *Mammoth*



*Hot  
Springs*



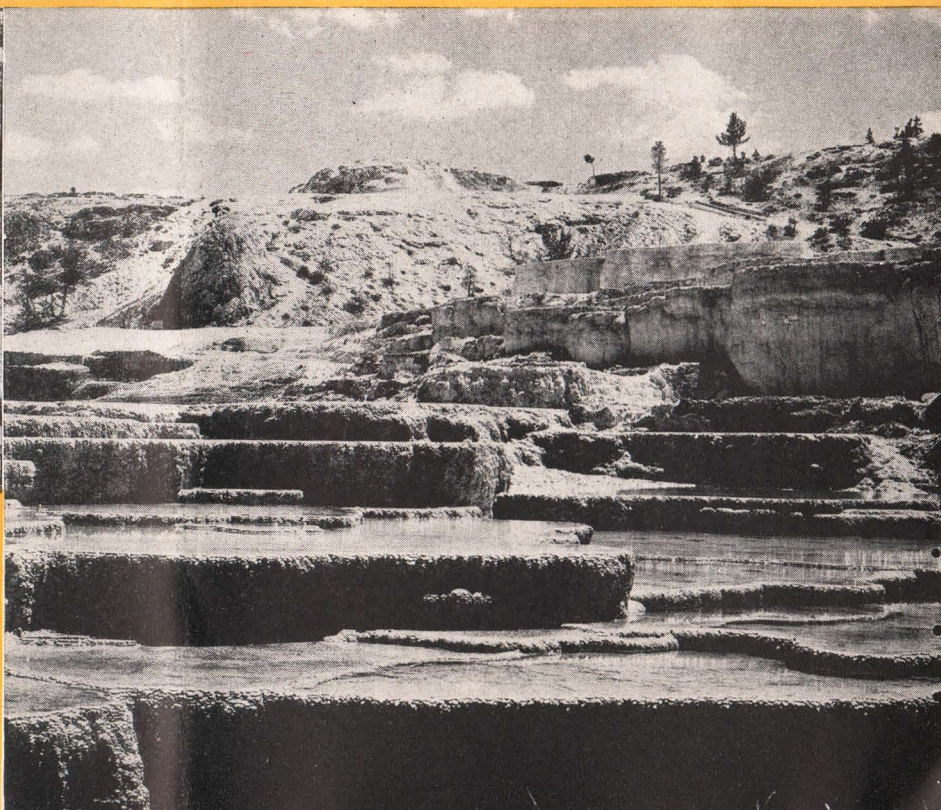
New 3-plan hotel buildings at Mammoth Hot Springs which provide regular hotel service, standard cabins and first-class cottages.



Some of the first class hotel cottages, attractively grouped near the main hotel building at Mammoth Hot Springs.



Yellowstone Park Chapel at Mammoth. Open to the use of all denominations for religious services.

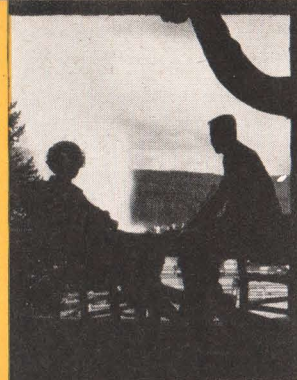


Nature has devoted endless centuries to the preparation of this sight—Hymen Terrace and its imprisoned pools at Mammoth Hot Springs.



Old Faithful Geyser, most famous in the world,  
hurls aloft tons of boiling water  
approximately every hour.

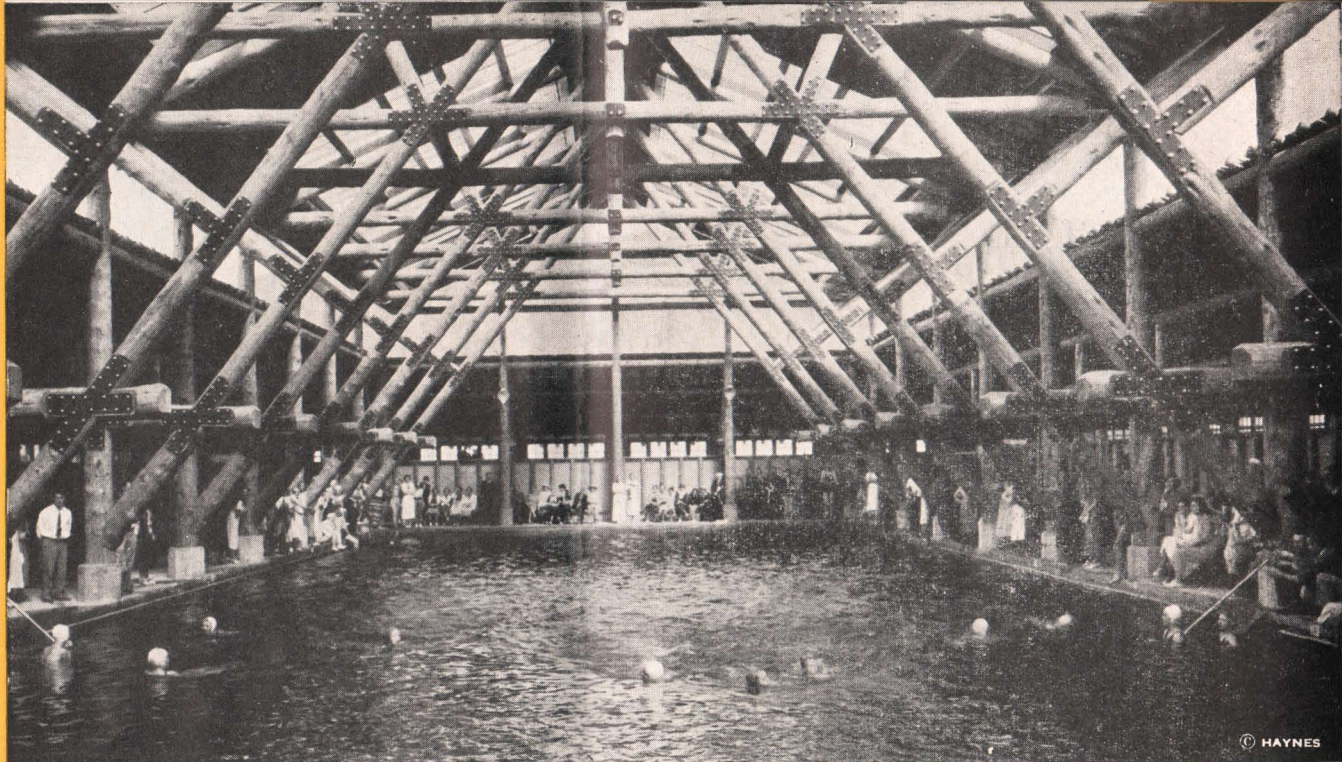
# IN AND ABOUT *Old Faithful*



Above—The Inn faces Old Faithful and a dozen other famous geysers in the Upper Basin.

Below—The great chimney corner in the lobby of Old Faithful Inn is a popular gathering place.





World novelty among natatoriums is the Geyser water swimming pool near Old Faithful Inn.



GIANT GEYSER



HOT SPRINGS—GIBBON CANYON



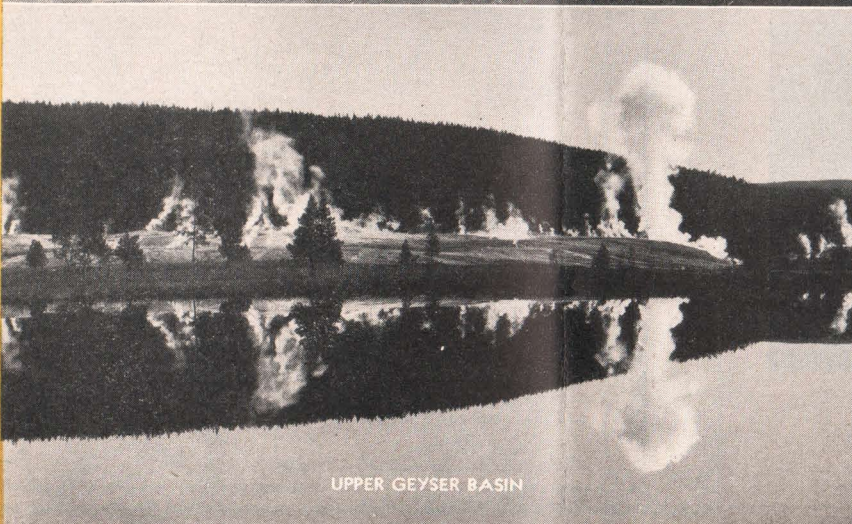
PAINT POTS



THE BLACK GROWLER



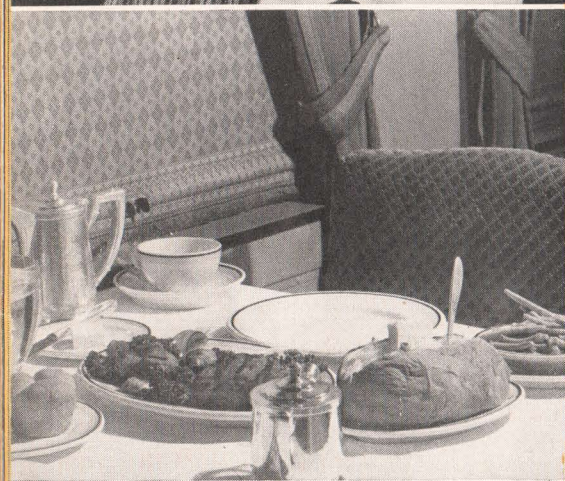
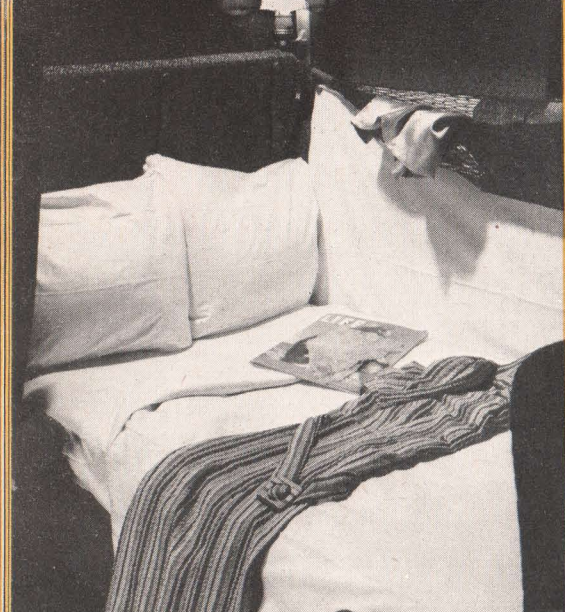
MINUTE GEYSER



UPPER GEYSER BASIN



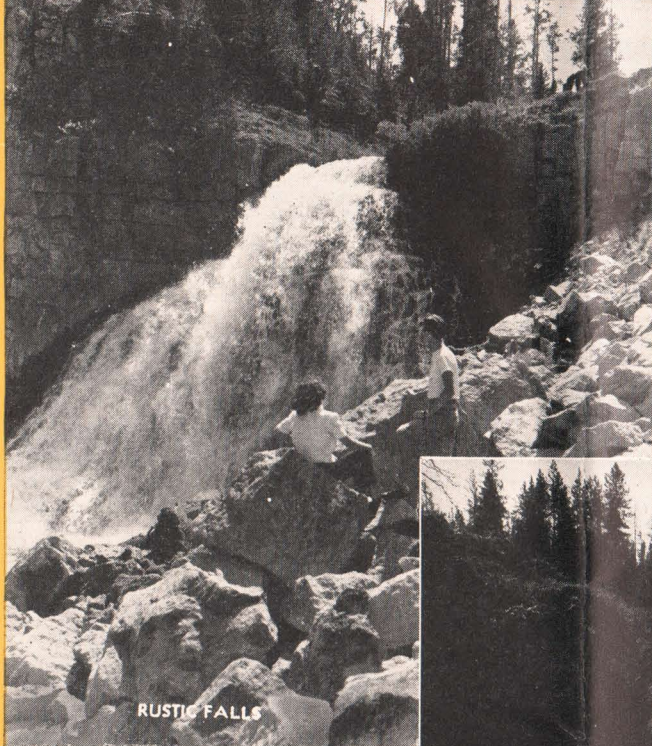
BEE HIVE GEYSER



**COMFORT BY THE MILE!**  
Above—Cozy Berths Lure to Slumber.  
Center—"Famously Good" Meals.  
Below—In the Restful Train Lounge.



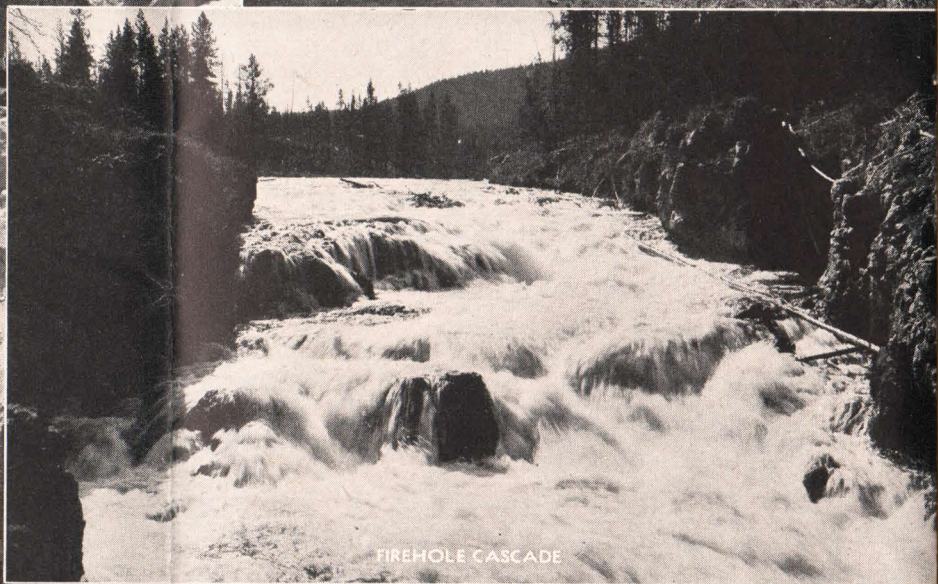




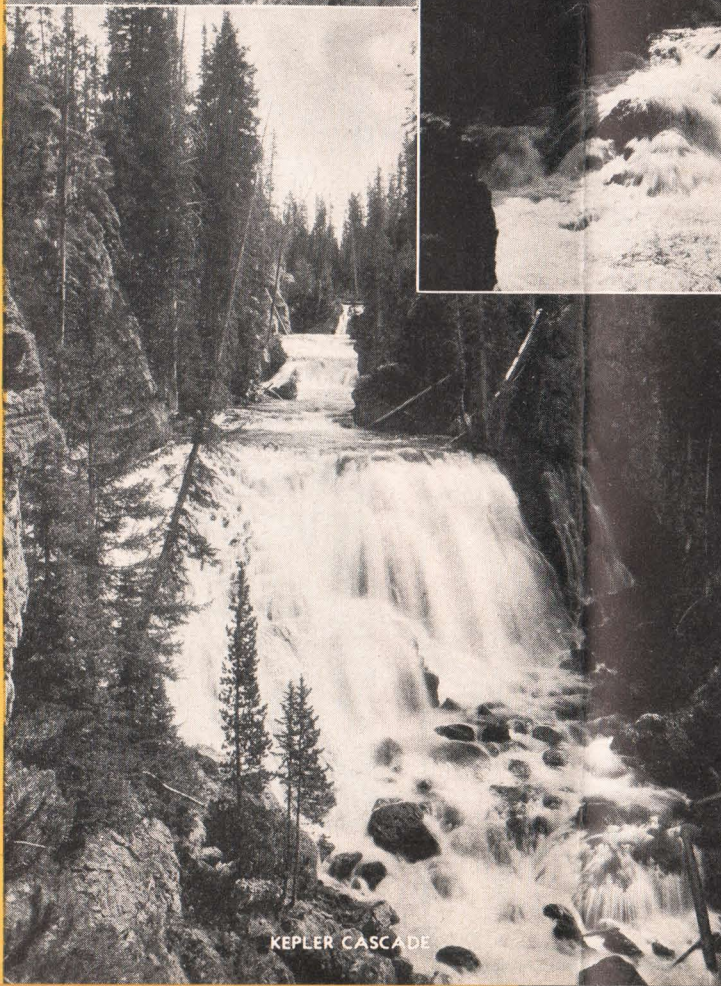
RUSTIC FALLS



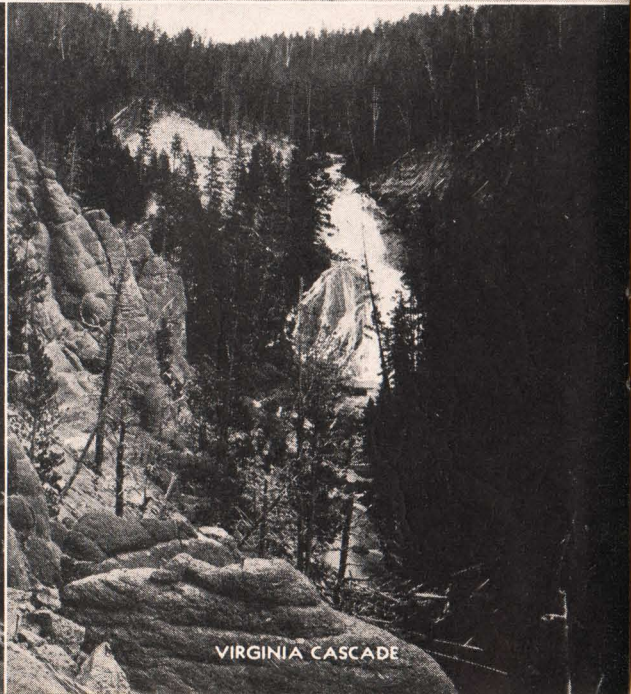
GIBBON FALLS



FIREHOLE CASCADE



KEPLER CASCADE

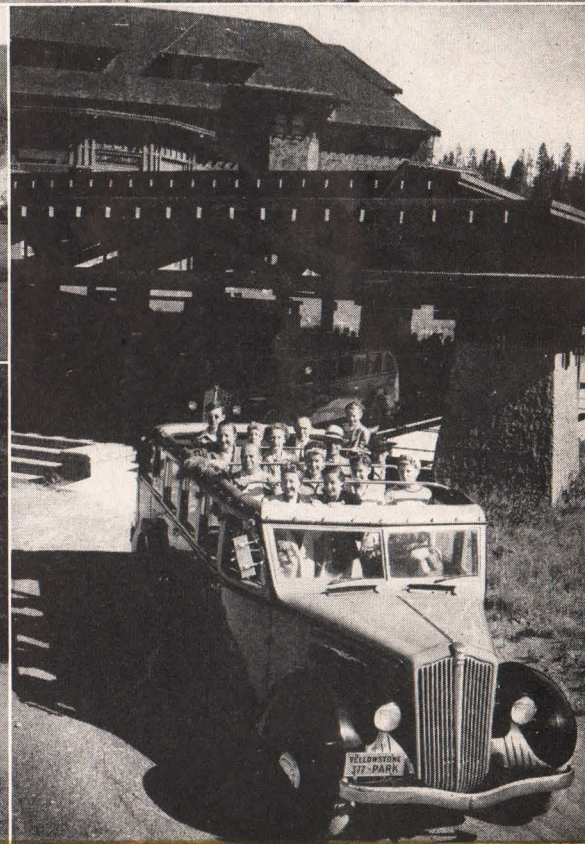
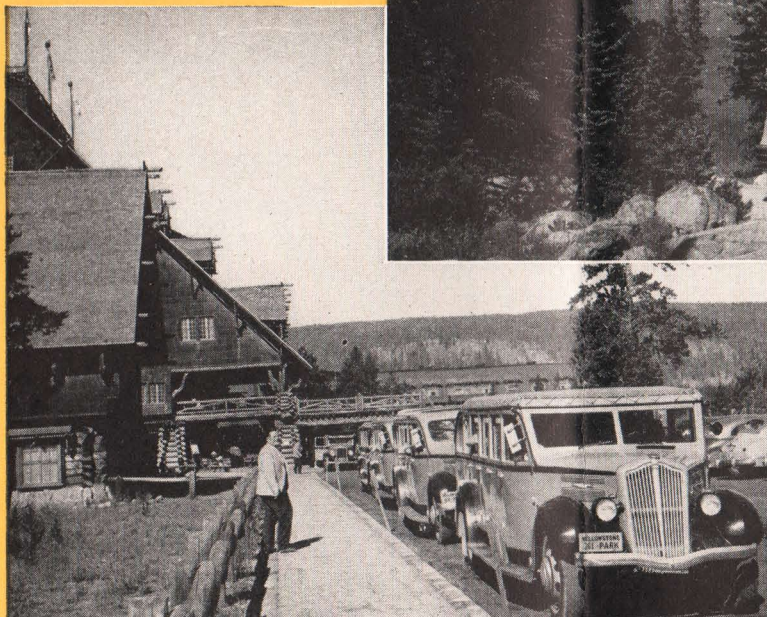


VIRGINIA CASCADE

The easiest and best way to see the park is by comfortable Yellowstone buses. Experienced drivers add zest to the tour by timely anecdotes and explanation of phenomena.

Right—N. P. Transport bus stops on Red Lodge High Road for view of lofty Beartooth Butte.

Below—Buses lined up at Old Faithful Inn for park tour. At bottom, one of the park's "citizens" inspects bus load of sightseers.



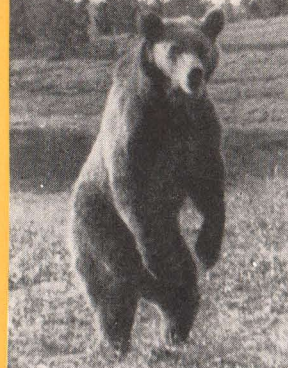
← Thirteen major waterfalls and cascades are seen from the route of the regular park tour. On every road throughout the Park Loop the traveler is rewarded by vistas of unspoiled wilderness in which foaming mountain streams play no small part.

Above—These happy folks are leaving Grand Canyon Hotel for a sightseeing trip. ↑



Nature's masterpiece—the Grand Canyon of the Yellowstone, "pot of gold" at the end of the rainbow and a highspot in the park tour.

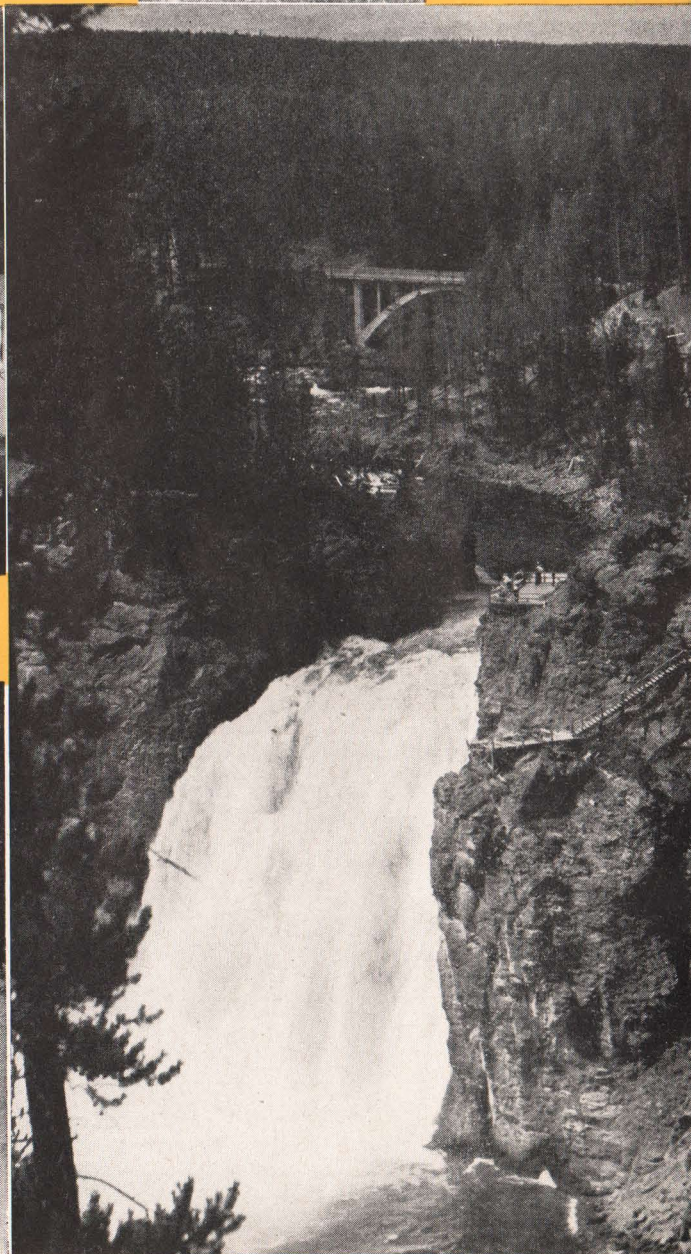
# IN AND ABOUT *Grand Canyon*



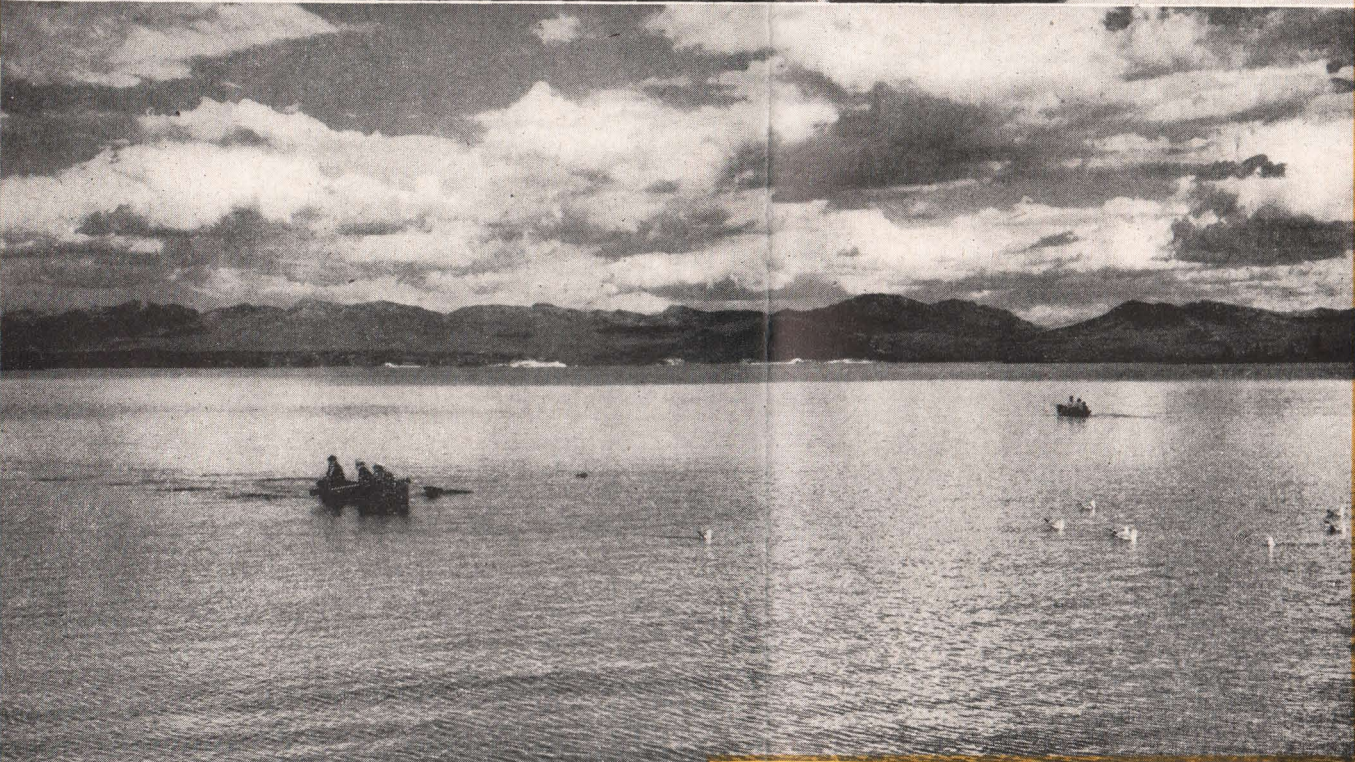
Visitors to Canyon Hotel are impressed with its beauty. This is a view of the spacious lounge.



Horseback riding is a popular Park activity. Here, a guide calls attention to some interesting sight along the rim of Grand Canyon.



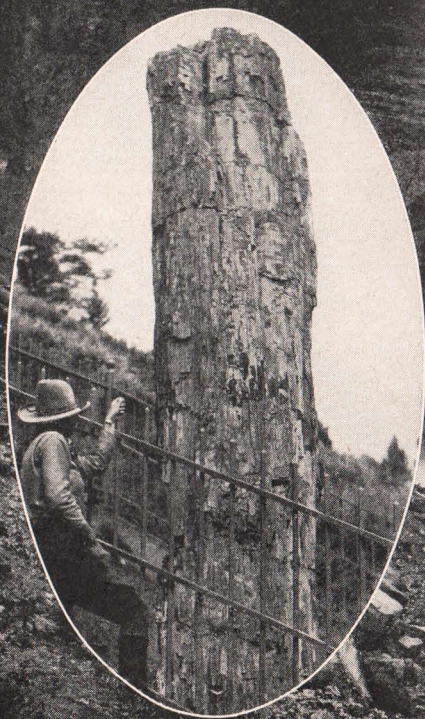
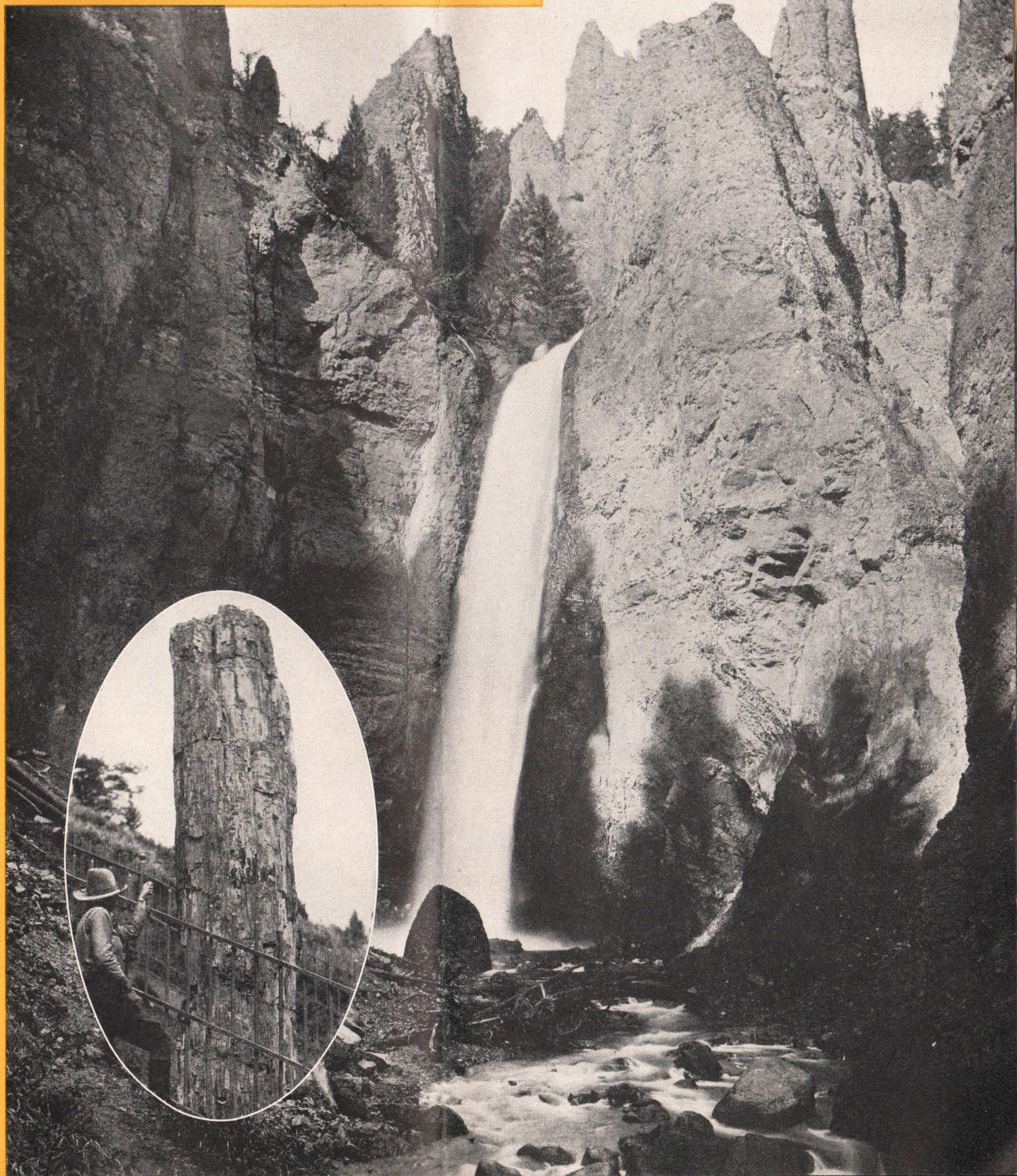
Upper Falls of the Yellowstone River, although not as famous as the Lower Falls, makes its own scenic bid for fame as this view shows.



Even the fisherman "down on his luck" can catch his limit at famous Fishing Bridge, where Yellowstone Lake (below) empties into the river.

A mile and a quarter above sea level, near Camp Roosevelt, is feudal  
Tower Fall, 132 feet high.

Inset—Petrified Tree near Tower Fall, one of many examples of petrifica-  
tion found in the park area.



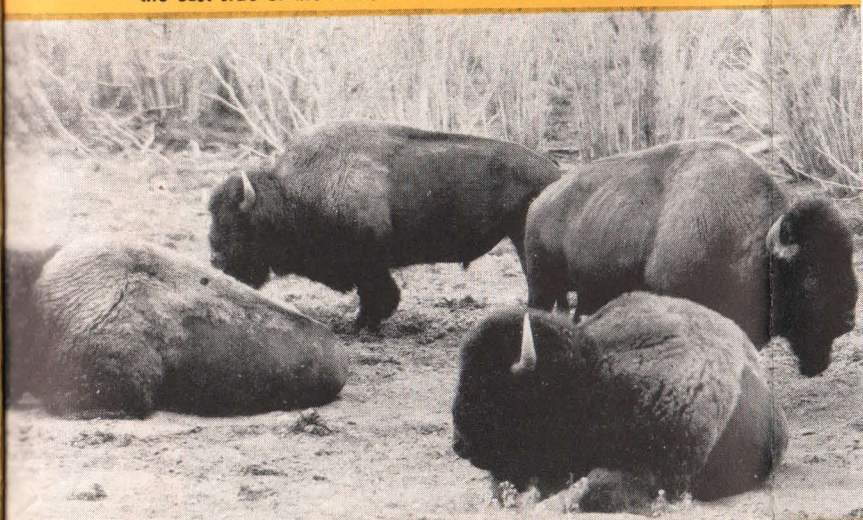


Cunning cub bear teetering comically in the pine  
tops perform continuously throughout the park.  
It's against the law to feed them.

# WILD ANIMAL LIFE IN *Yellowstone*

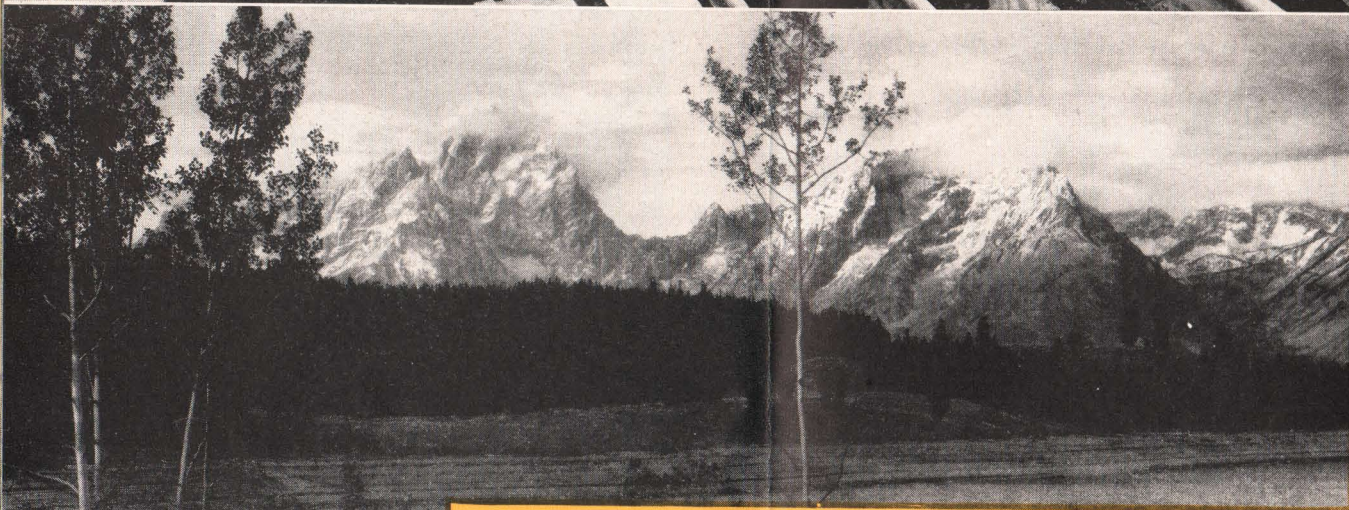
A newcomer in a world of wonder who  
is all ears to hear you are going to spend  
your next vacation in Yellowstone.

Monarchs of the Plains hold sway along  
the east side of the Park.



Antelope make the meadows near Gardiner Gateway their favorite  
feeding grounds.



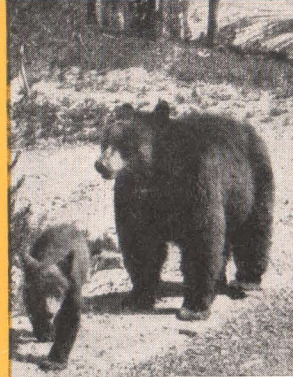


Top—To the summit of Mt. Washburn goes the highest road in the Park. One may view the entire park panorama from the lookout station, altitude 10,317 feet. (NATIONAL PARK SERVICE PHOTO)

Below—Grand Teton National Park adjoins Yellowstone on the south and is an easy sidetrip from Old Faithful. This view shows the Tetons rising abruptly from Jackson Lake.

# Information

## OF GENERAL INTEREST



### RATES FOR 2½-DAY TOUR WITHIN THE PARK

For the 1948 Season

Entering or leaving through either

Gardiner or Cody Gateways - - - - -\*\$44.75

One way through Red Lodge Gateway - - - \* 51.25

Except entering via Cody, leaving via Red

Lodge, tour requires 3½ days, cost - - \* 59.25

*\*Plus Federal Tax on transportation*

These rates include auto transportation, meals and lodging in hotels, two persons to a room without bath—slightly higher charges being made for superior types of hotel accommodations.

### YELLOWSTONE—COLORADO

FOR THE SAME RAIL FARE, passengers holding tickets reading via Burlington from or through Chicago, St. Louis, Kansas City or Omaha to the Yellowstone Gateways (Gardiner, Red Lodge or Cody), may if they wish, include Denver and the colorful Colorado Rockies.

For example: ticket may read Chicago to St. Paul via C. B. & Q.; St. Paul to Gardiner via Northern Pacific; Cody to Denver via C. B. & Q.-C. & S.; returning Denver to Chicago via C. B. & Q. This ticket permits free side trip Denver to Colorado Springs and return. The route from Cody to Denver is through the scenic Wind River Canyon, Thermopolis, Casper and Cheyenne. A motor side trip from Denver to Rocky Mountain National Park costs \$8.00 (plus Federal Tax), or vacationists can make a two-day all-expense circle tour through the Park from Denver, for \$25.49 (including all taxes).



**Nine miles beyond Gardiner, the park highway beckons into the Rockies through Golden Gate.**

Thousands of people each year take advantage of this favorable routing arrangement to combine a tour of Yellowstone with a visit to Rocky Mountain Park.

# Yellowstone

## EXTENSION TOURS

An eye-filling, soul-stirring panorama of magnificent mountains and beautiful valleys unfold from various vantage points.



In Yellowstone Park, travelers are astounded by Mother Nature's phenomena—more strange, thrilling sights are found compactly arrayed along the grand loop of the Yellowstone than one can assemble elsewhere in the world with thousands of miles of travel. Yet, when the trip is over, many of the travelers who have been so fascinated by the geysers or the antics of roadside bears that they failed to appreciate the great mountains on Yellowstone's horizons, think they must go far away—to some other country, or to some other park—to find mountain scenery worth seeing.

Are you a lover of mountains? Do you want to see some worth while? Then, allow an extra day for your western trip, to venture into that magnificent mountain wilderness just northeast of Yellowstone Park, amid the high peaks of Wyoming and Montana, between Cody and Red Lodge gateways of the park.

If you like to explore, ask your ticket agent to sell you any one of the following Gray Line sight-seeing tours in connection with your Yellowstone Park trip:

**TOUR 1**—\$5.25 (tax 79c) Daily for individuals in summer. Lv. Billings, Mont. 7:30 a.m. High Road via Red Lodge to Beartooth Lake and return. Ar. Billings 6:15 p.m. Total mileage, 203. This is the "Skyride" in safety, by Gray Line Bus, above the clouds.

**TOUR 2**—\$7.25 (tax \$1.09) Daily for individuals in summer. Lv. Billings, Mont. 7:30 a.m. High Road to Cooke and return to Billings 6:15 p.m. Total mileage 177, amid Montana's loftiest peaks, plus 71 scenic miles in beautiful Wyoming.

**TOURS 3, 4 and 5**—Yellowstone Park Extension Trips—\$10 plus \$1.50 federal tax in connection with railroad tickets to Yellowstone Park. Through this "Greater Yellowstone Country," in 1940, the U. S. Forest Service completed a road via glorious Sunlight Basin.

Parties of four or more, June 20th to Sept. 9th, will be handled from Billings or Cody into this area on the following schedules:

**TOUR 3**—Lv. Billings 7:30 a.m.; Ar. Beartooth Lodge 11:50 a.m.; Lv. Beartooth 1:30 p.m.—to Sunlight Basin, Dead Indian Hill and return. Ar. Red Lodge 4:45 p.m.; Ar. Billings 6:30 p.m.—total mileage 278.

**TOUR 4**—Lv. Cody 8:30 a.m.; Ar. Beartooth Lodge 12:30 p.m.; Lv. Beartooth 2:25 p.m.; Ar. Billings 6:30 p.m.—total mileage 167.7.

**TOUR 5**—Lv. Billings 7:30 a.m.; Ar. Beartooth Lodge 11:50 a.m.; Lv. Beartooth 1:40 p.m.; Ar. Cody 5:40 p.m.—total mileage 167.7.

Tours 4 and 5 are recommended to Yellowstone Park passengers either before entering or after leaving the park via Cody or Red Lodge. Sight-seeing buses connect with Northern Pacific trains at Billings and C. B. & Q. trains at Cody. Cody Inn rooms \$2.75 to \$4.50 single, or \$4.50 to \$7 double; meals \$.65 to \$1.75; luncheon at Beartooth Lodge, \$1.50.

Arrangements for these tours may be made with C. B. & Q. agents at Cody, or Northern Pacific agents at Red Lodge or Billings—or any travel agent, railroad or Gray Line agent in U. S. A. or Canada.



# INFORMATION OF GENERAL INTEREST

## YELLOWSTONE AND OTHER PARKS

Yellowstone Park is so situated and service to and from the park is so varied that it may conveniently and at low cost be included in tours to other national parks or on transcontinental trips. Ask your ticket agent or any of the Burlington-Northern Pacific travel representatives listed on inside back cover of this book.

## TROUT FISHING

Of all the outdoor activities of park life, trout fishing in mountain waters is one of the most alluring. No license is required within the park limits. The following varieties are found in most of the park waters: Cutthroat (native), Lock Leven, Eastern Brook, Rainbow, Mackinaw, Rocky Mountain Whitefish and Grayling. You can fish for trout in most any of the park rivers or lakes, Lake Yellowstone being particularly good, but if you wish to know really royal sport allow extra time in addition to that required for the park tour and seek remote waters in the mountain fastnesses. Tackle is obtainable at stores in the park or may be rented at Hotels.

## HORSEBACK RIDING

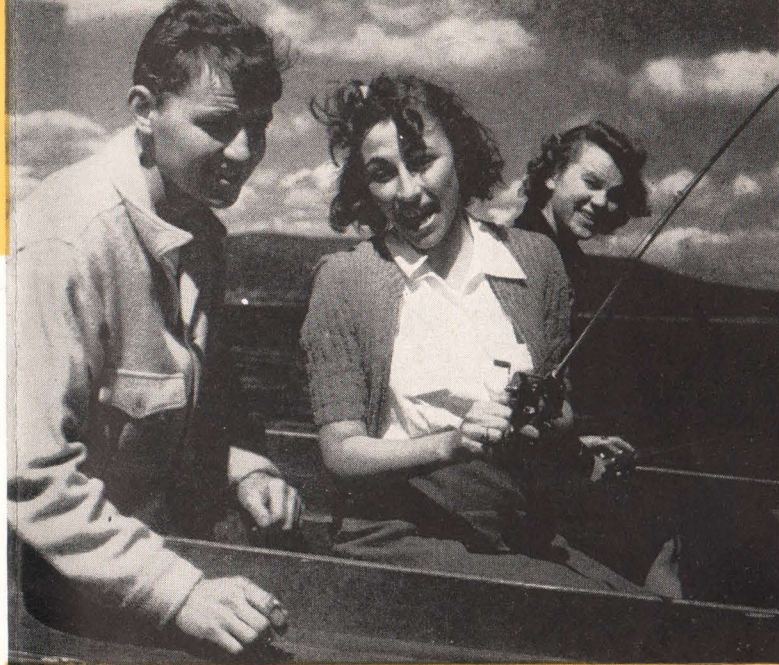
Riding horses and guides are available at Mammoth, Old Faithful and Canyon hotels. The charges are reasonable.

## OPPORTUNITIES FOR STUDY

The National Park Service has established museums at Mammoth Hot Springs, Norris Geyser Basin, Old Faithful, Fishing Bridge and Madison Junction. Each deals principally with the phenomena and data of its locality and offers unlimited opportunity for study and information gathering. The Ranger Naturalists also conduct free lectures at various points in the park.

## LARGEST OF NATIONAL PARKS

Yellowstone is the largest and most famous as well as the first of our National Parks. Approximately one and one-half times as large as the state of Delaware, enclosing 3,472 square miles of scenic natural wonders,



Excitement afloat as another big trout is hooked in Yellowstone Lake!

it lies in the northwest corner of Wyoming and borders into Idaho and Montana.

In Yellowstone the National Park idea was born in 1870 and the area was set aside as public domain by act of congress in 1872. It contains probably not less than 10,000 thermal features of all kinds, mountains, forests, glaciers, rivers, waterfalls, petrified trees, canyons and gem-like lakes. More wild animals and birds and a greater variety of both inhabit its confines than any other park in America.

Yellowstone Park lies in the center of a great area of National forests containing some three million acres and extending far into Wyoming, Montana and Idaho. It is almost completely surrounded by towering mountain ranges, inaccessible in most places except for the spectacular approaches which scale these mountain barriers to provide entrance to wonderland. Its system of roads is adequate and good, yet it has been said that 100 feet from the road one encounters virgin wilderness, unspoiled and unmarked by man, except for a neat sign here and there or a well-marked forest trail.

Other areas of the earth may be crowned with the magnificence of mountains, valleys, shimmering waters and green forests. But in Yellowstone these splendors are haunted by ghostly geysers, steaming landscapes, water boiling in the earth and similar mystical manifestations. There you not only stand in rapt admiration of creation but you look in awe at its processes.



WILD BUCKWHEAT



INDIAN  
PAINT BRUSH



GENTIAN



LUPINE



ASTER



GERANIUM

# INFORMATION OF GENERAL INTEREST

## ROADS IN THE PARK

Yellowstone's Grand Loop road extends for approximately 145 miles within the park boundaries, mostly oiled and hard surfaced. Distances between some of the principal points are:

Gardiner Gateway to Mammoth Hot Springs.....	5 miles
Mammoth Hot Springs to Old Faithful.....	51 miles
Old Faithful to West Thumb (Yellowstone Lake) .....	17 miles
West Thumb to Lake Hotel .....	19 miles
Lake Hotel to Canyon Hotel.....	16 miles
Canyon Hotel to Mammoth Hotel .....	40 miles
Canyon Hotel to Old Faithful.....	41 miles

★★★

Red Lodge to Grand Canyon.....	121 miles
Cody to Lake Hotel.....	80 miles

## WILD ANIMAL CENSUS

Recent official estimates of the largest species of wild animals within the confines of the park place their numbers as follows:

Elk (Wapiti).....	11,300	Grizzly bear.....	200
Buffalo.....	1,100	Mule deer.....	600
Pronghorn antelope....	625	Moose.....	600
Black bear.....	360	Big Horn sheep.....	280

Many varieties of smaller animals such as beaver, porcupine, lynx, coyote, marmot and fox are so numerous no accurate count has been made.

More than 200 species of birds make their homes in the park—geese, ducks, pelicans, pheasants, eagles, ospreys, gulls, hawks, owls, ravens, jays, blackbirds, magpies, meadow larks, robins and many others. Even some of the rare trumpeter swans, almost extinct, have made their home in Yellowstone.

## YELLOWSTONE'S VERNACULAR

Yellowstone has a vocabulary all its own. Probably inspired by the vacation spirit of light-hearted fun,



its usage has become a part of park life and visitors always enjoy their stay in Yellowstone even more when they learn the local "language":

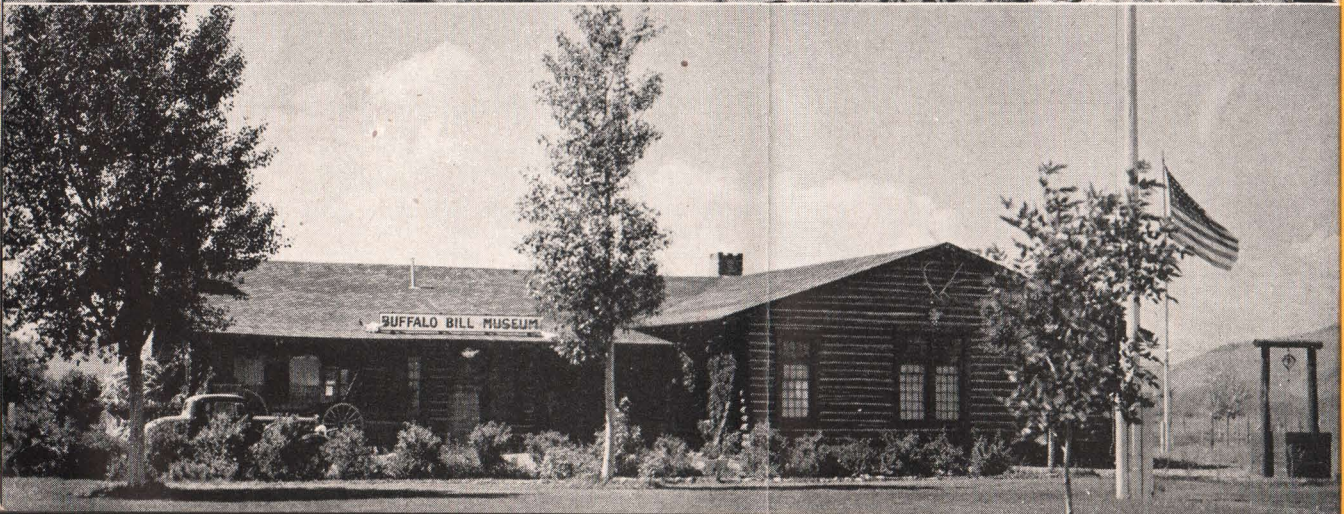
- Dudes—All tourists of both sexes in the park
- Savages—All lodge, hotel and transportation employees
- Heavers—The girls who wait on tables
- Pearl Divers—The dish washers
- Pillow Punchers—Girls who make up the beds
- Pack Rats—Porters at hotels and lodges
- Gear Jammers—Drivers of the Yellowstone buses
- Wranglers—Men who look after the horses
- Song Wranglers—Recreation leaders for community singing
- Ninety-day Wonders—Rangers who police the park and act as guides
- Sagebrushers—Tourists using their own outfits and camping in the sagebrush
- Rotten-logging—Two alone, moonlight and a log to sit on. Effected by rangers and heavers. Dudes are not barred

HAYNES PICTURE SHOPS, conveniently located in hotels and lodges and at other vantage points in the park, sell pictures, albums, guide books, post cards, and camera supplies.

Seven hundred fifty varieties of wild flowers have been observed and classified by Park Naturalists. Most of them are in bloom during July when the Park is a veritable flower garden, gay colors adorning every road and trail. Some of the more common varieties are shown here.



Above—Burlington Inn and Station at Cody.  
Center—Famous statue of Buffalo Bill, Cody.  
Below—Buffalo Bill Museum which contains  
many relics of the famous plainsman.



# BURLINGTON-NORTHERN PACIFIC TRAVEL BUREAUS AND TICKET OFFICES

AMARILLO, TEXAS, Ft. W. & D. C. Railway  
239-241 Amarillo Bldg.  
W. M. Gray.....General Agent

ATCHISON, KANSAS, Burlington Route  
Second and Main Sts., G. A. Tauchman, Commercial Agt.

ATLANTA 3, GA., Burlington Route  
632-633 Healey Bldg., H. B. Howe.....Commercial Agent  
Northern Pacific Ry., 829 Grant Bldg.  
J. A. Marshall.....General Agent

BILLINGS, MONT., Northern Pacific Ry., Northern Hotel  
J. W. Overman.....Dist. Frt. and Pass. Agt.  
Burlington Route, 217 Fratt Bldg.  
P. C. Jordan.....Division Passenger Agent

BIRMINGHAM 3, ALA., Burlington Route, 510 Brown-Marx Bldg.  
J. M. McDermott.....General Agent

BOSTON 16, MASS., Burlington Route, 80 Boylston St.  
C. L. Gaffney.....General Agent  
Northern Pacific Ry., 8 Little Bldg.  
V. T. Sampson.....General Agent, N. E.

BUFFALO 3, N. Y., Northern Pacific Ry.  
795 Elliott Square, J. M. Doyle.....General Agent

BURLINGTON, IOWA, Burlington Route,  
Burlington Depot.  
J. C. Harkness.....Div. Pass. Agt.

CASPER, WYO., Burlington Route, Burlington Depot  
O. C. Wallace.....Div. Pass. Agt.

CHEYENNE, WYO., Burlington Route, Burlington-  
C. & S. Station  
J. P. McDermott.....General Agent

CHICAGO 3, ILL., Burlington Route, Adams at Clark St.  
C. W. Plagemann.....Assistant General Agent

711 Bankers Bldg.  
W. M. Moloney.....General Agent  
Northern Pacific Ry., 73 East Jackson Blvd. Zone 4  
F. G. Scott.....Gen. Agt., Pass. Dept.

CINCINNATI 2, OHIO, Burlington Route  
505 Dixie Terminal Bldg.  
E. G. Waterman.....General Agent  
Northern Pacific Ry., 615 Gwynne Bldg.  
K. W. Wilson.....General Agent

CLEVELAND 13, OHIO, Burlington Route, 1032 Terminal Tower  
Robert Berman.....General Agent  
Northern Pacific Ry., 1334 Terminal Tower Bldg.  
P. H. Boardman.....General Agent

CLINTON, IOWA, Burlington Route, 404 Wilson Bldg.  
W. A. Carlson.....Commercial Agent

CODY, WYO., Burlington Route, R. W. Boyer.....Agent

COLORADO SPRINGS, COLO., Burlington Route  
607 Exch. Nat'l Bank Bldg., P. L. Getchell.....Gen. Agt.

COUNCIL BLUFFS, IOWA, Burlington Route  
A. N. Kolb.....Commercial Agent

DALLAS 1, TEXAS, Burlington Route, 701-2 Kirby Bldg.  
T. V. Murray, Jr.....General Agent

Ft. W. & D. C. Railway, 732 Irwin-Keasler Bldg.  
E. C. Kuykendall.....General Agent  
Northern Pacific Ry., 901 Southwestern Life Bldg.  
Chas. Sorg, Jr.....General Agent

DAVENPORT, IOWA, Burlington Route  
Front and Harrison Sts.  
H. A. Leonoid.....Commercial Agent

DEADWOOD, S. D., Burlington Route, 47 Sherman St.  
A. E. Brown.....Div. Pass. Agt.

DENVER 2, COLO., Burlington Route  
17th & Champa Sts.  
F. W. Johnson.....General Passenger Agent  
Northern Pacific Ry., 316 Railway Exch. Bldg.  
L. A. Anderson.....General Agent

DES MOINES 9, IOWA, Burlington Route  
411 Savings & Loan Bldg.  
H. E. Smith.....City Passenger Agent

DETROIT 26, MICH., Burlington Route, 709-10 Lafayette Bldg.  
P. L. Smithburg.....General Agent  
Northern Pacific Ry., 808 Lafayette Bldg.  
W. Adamson.....General Agent

DULUTH 2, MINN., N. P. Ry. Union Depot  
A. A. Anderson.....General Agent

FORT WORTH 2, TEXAS, Ft. W. & D. C. Railway  
702 Fort Worth Club Bldg.  
J. F. Lehane, Jr.....General Agent

GALESBURG, ILL., Burlington Route, Burlington Depot  
W. E. Stouffer.....Division Passenger Agent

HASTINGS, NEB., Burlington Route, Burlington Depot  
D. Kastrup.....Div. Pass. Agt.

HOUSTON 2, TEXAS, Ft. W. & D. C. Railway  
324 Union Station  
J. E. Meroney.....General Agent  
925 Texas Avenue  
C. L. Merriott.....Gen. Agt., Pass. Dept.

INDIANAPOLIS 4, IND., Burlington Route  
910 Merchants Bank Bldg.  
W. P. O'Rourke.....General Agent

JACKSONVILLE 1, FLA., Burlington Route  
304 Barnett Nat'l Bank Bldg.  
J. W. Grady.....General Agent

KANSAS CITY 6, MO., Burlington Route, 1031 Grand Ave.  
J. E. Lynn.....General Agent  
Northern Pacific Ry., Room 206, 1025 Grand Ave.  
W. F. Goodknight.....General Agent

LA CROSSE, WIS., Burlington Route, Burlington Depot  
W. G. Holmes.....City Passenger Agent

LEAVENWORTH, KAN., Burlington Route  
Fifth and Choctaw Streets  
S. E. Nirdlinger.....Commercial Agent

LINCOLN 8, NEB., Burlington Route  
Eleventh and P. Streets  
W. T. Albrecht.....General Agent

LOS ANGELES 14, CAL., Burlington Route  
Rms. 1118-1119, 510 W. 6th St., L. E. Gabrielson, Gen. Agt.  
Northern Pacific, 519 Associated Realty Bldg.  
510 W. 6th St., D. F. Walker.....General Agent

MILWAUKEE 3, WIS., Burlington Route  
231 West Wisconsin Ave., W. G. Shisler.....General Agent  
Northern Pacific Ry., 913 Majestic Bldg.  
R. L. Kelly.....General Agent

MINNEAPOLIS 2, MINN., Northern Pacific Ry.  
701 Marquette (Roanoke Bldg.), C. S. Kirkland, Gen. Agt.  
Burlington Route, 90 S. 7th St.  
W. R. Burgess.....General Agent

MOBILE 13, ALA., Burlington Route  
203 First Nat'l Bank Bldg., Annex  
S. M. Graham.....Commercial Agent

NEW ORLEANS 12, LA., Burlington Route  
622-23 Canal Bldg., F. J. Petagna.....General Agent

NEW YORK 18, N. Y., Burlington Route, 500 Fifth Ave.  
M. J. Fox.....General Agent  
Northern Pacific Ry., 534 International Bldg., Rockefeller  
Center, Zone 20, V. L. BeDell.....General Agent

OAKLAND 12, CAL., Burlington Route  
512 Central Bank Bldg.  
V. A. Kulberg.....Commercial Agent  
Northern Pacific Railway, 815 Central Bank Bldg.  
J. C. Spracklin.....General Agent

OKLAHOMA CITY 2, OKLA., Burlington Route  
2902 Arco Tower  
B. C. Milliken.....Commercial Agent

OMAHA 2, NEB., Burlington Route, Farnam at 19th  
J. W. Sharpe.....General Agent  
1614 Farnam St., W. L. McKain.....City Ticket Agent  
Northern Pacific Ry., 309 W. O.W. Bldg.  
W. D. Miller.....General Agent

PADUCAH, KY., Burlington Route  
606 Citizens Savings Bank Bldg.  
V. B. Budde.....Commercial Agent

PEORIA 2, ILL., Burlington Route  
301 So. Jefferson Ave.  
H. F. Willis.....General Agent

PHILADELPHIA 9, PA., Burlington Route  
123 So. Broad St.  
E. O. Choice.....General Agent  
Northern Pacific Ry., 926 Fidelity-Philadelphia Tr. Bldg.  
B. M. Decker.....General Agent

PITTSBURGH 19, PA., Burlington Route  
2620 Koppers Bldg.  
L. M. Jones.....General Agent  
Northern Pacific Ry., 608 Park Building, Zone 22  
A. N. Gustafson.....General Agent

PORTLAND 4, ORE., Northern Pacific Ry.  
439 S. 6th Ave.  
A. C. Stickley.....General Agent, Passenger Dept.  
Burlington Route, 911 Equitable Bldg.  
O. G. Hagemann.....General Agent

PUEBLO, COLO., Burlington Route, 622 N. Main St.  
G. G. Clutter.....General Agent

QUINCY, ILL., Burlington Route, 400 Maine St.  
B. R. Newlon.....Div. Pass. Agt.

ROCK ISLAND, ILL., Burlington Depot  
A. R. Brown.....Division Freight Agent

SALT LAKE CITY 1, UTAH, Burlington Route  
218 Kearns Bldg., J. H. Gregory.....General Agent

SAN ANTONIO 5, TEXAS, Ft. W. & D. C. Railway  
318 Gunter Bldg.  
S. B. Gimble.....General Agent

SAN FRANCISCO 5, CAL., Burlington Route, 657 Market St.  
Daniel Finney.....General Agent  
Burlington Route, 999 Monadnock Bldg.  
O. M. Detoy.....Gen. Agt.

SEATTLE 1, WASH., Northern Pacific Ry.  
1401 4th Ave.  
C. R. Throckmorton.....General Agent, Pass. Dept.  
Burlington Route, 1401 Dexter-Horton Bldg. (Zone 4)  
C. W. Hoefner.....General Agent

SHERIDAN, WYO., Burlington Route  
O. L. Jarman.....Agent

SIOUX CITY 9, IA., Burlington Route  
400 Commerce Bldg.  
E. A. Martin.....General Agent

SPOKANE 8, WASH., Northern Pacific Ry.  
701 Sprague Ave., L. M. Ackerman.....General Agent  
Burlington Route, 1031 Old National Bank Bldg.  
J. C. Boyer.....General Agent

ST. JOSEPH 2, MO., Burlington Route, 511 Francis St.  
T. J. Abbott.....Division Passenger Agent

ST. LOUIS 2, MO., Burlington Route.  
322 No. Broadway  
R. A. Campbell.....General Agent  
Northern Pacific Ry., 601-604 Boatmen's Bank Bldg.  
R. K. Cross.....General Agent

ST. PAUL 1, MINN., Northern Pacific Ry.  
Fourth and Robert Sts.  
M. R. Johnson.....General Agent, Passenger Dept.  
Burlington Route, Fifth and Robert Streets  
C. E. Birdsall.....General Agent  
228 Railroad Bldg.  
Ben W. Wilson.....Asst. General Passenger Agent

TACOMA 2, WASH., Northern Pacific Ry.  
118 S. Ninth St.  
J. L. Norton.....Assistant General Frt. & Pass. Agt.  
Burlington Route, 216 Tacoma Bldg.  
T. L. Hammer.....Commercial Agent

TORONTO, ONT., Northern Pacific Ry.  
Room C-29 Union Station  
C. E. Harris.....General Agent

TULSA 3, OKLA., Burlington Route  
203 Mid-Continent Pet. Corp. Bldg.  
J. D. Reznor, Jr.....General Agent

WASHINGTON 5, D. C., Burlington Route, 500 Shoreham Bldg.  
E. K. Kremer.....Dist. Pass. Agt.  
Burlington Route, 425 Shoreham Bldg.  
E. L. Simmons.....General Agent

WINNIPEG, MAN., Northern Pacific Ry., 204 Paris Bldg.  
T. J. O'Donnell.....General Agent  
Burlington Route, 701 Childs Bldg.  
Frank Wall.....General Agent

WINSTON-SALEM 1, N. C., Burlington Route  
529 Reynolds Bldg.  
R. F. Morse.....Trav. Pass. Agt.

Your local railroad agent will gladly tell you about Burlington-Northern Pacific service, or write

M. M. GOODSILL, Gen'l Pass'r Agt.  
Northern Pacific Ry., St. Paul 1, Minn.  
G. W. RODINE, Western Pass'r Traf. Mgr.  
Northern Pacific Ry., Seattle 4, Wash.  
E. E. NELSON, Pass'r Traf. Mgr.  
Northern Pacific Ry., St. Paul 1, Minn.



Made in U. S. A. 6169  
1948

J. J. ALMS, Gen'l Pass'r Agt.  
Burlington Route, Omaha 8, Neb.  
B. L. GARTSIDE, Gen'l Pass'r Agt.  
Burlington Route, Chicago 6, Ill.  
A. COTSWORTH, Jr., Pass'r Traf. Mgr.  
Burlington Route, Chicago 6, Ill.



Emigrant Peak in the Absaroka Range of the Rockies on the way to Yellowstone

**F**ULL enjoyment is naturally what you want in your Yellowstone trip. Here is how to get it: Go Burlington-Northern Pacific! By doing this you can readily arrange your trip in one gateway and out another and obtain more sightseeing and variety.

On the way you'll have delicious dining car meals,

accommodations, friendly, helpful service and the congenial sociability of western vacation travelers all having a good time.

Yellowstone can be made an exciting interlude in a transcontinental journey or can be easily combined with visits to other national parks.

**BETTER YELLOWSTONE VACATIONS**

**VIA BURLINGTON-NORTHERN PACIFIC**