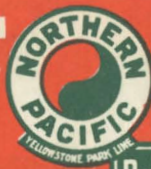


WEST

via the



Burlington
Route



WEST

via the

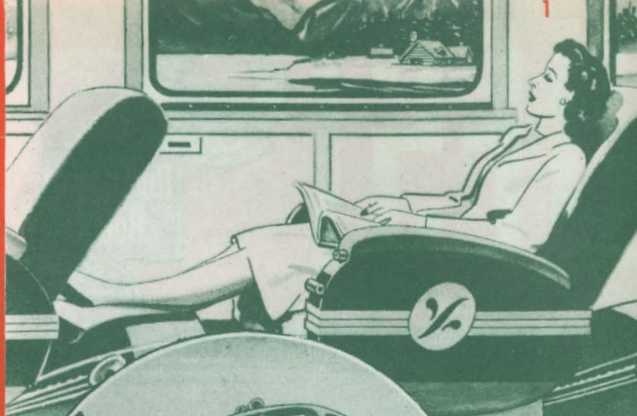


Burlington
Route

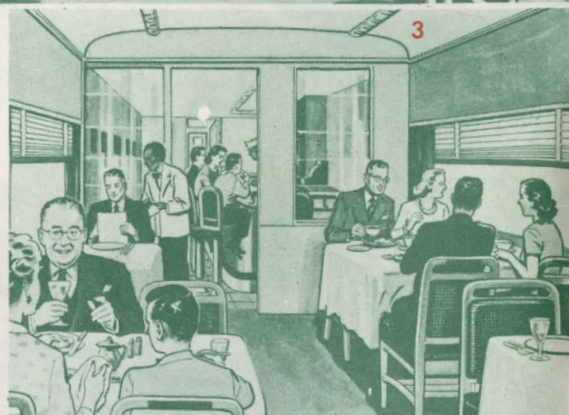


NORTHERN PACIFIC RAILWAY

ROUTE OF THE *Streamlined*
NORTH COAST LIMITED



- 1 Luxurious "Day-Nite" coach with leg rest to permit reclining full length.
- 2 Buffet-Lounge-Coach, with radio, upholstered chairs and tables, expressly for coach and Tourist sleeping car passengers.
- 3 Diner-Lunch cars provide lunch counter service or full course meals at the tables.
- 4 Duplex Roomettes—private rooms at a cost of only 10% more than a standard lower berth.
- 5 Travel comforts de luxe in this observation lounge with its deeply upholstered chairs and divans.



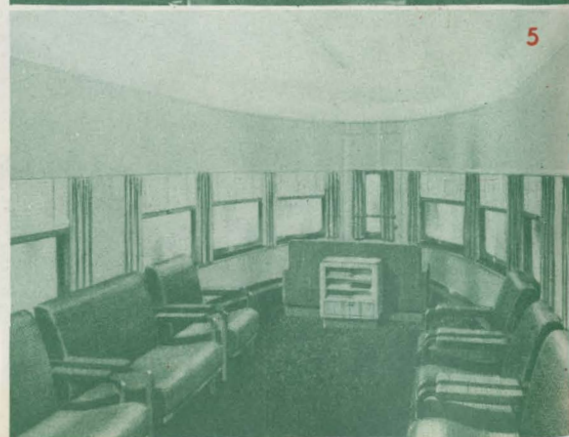
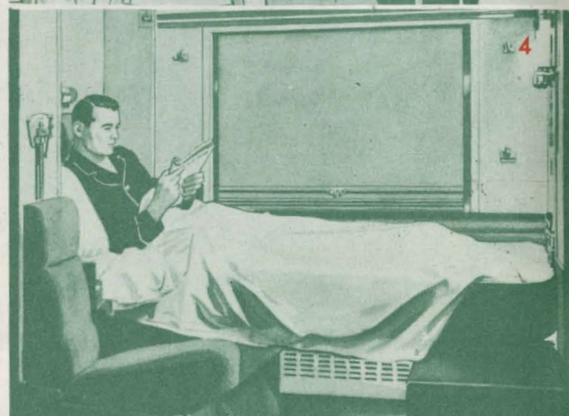
West VIA THE NORTHERN PACIFIC

ALL ABOARD! The Streamlined North Coast Limited leaving on Track 17 for Minnesota's Lake Region, the broad prairies of North Dakota, Montana's magnificent Rockies, Idaho's lakes and forests, the great Inland Empire around Spokane, America's "Evergreen Playground"—the Puget Sound Country and the great seaports of Seattle, Tacoma and Portland!

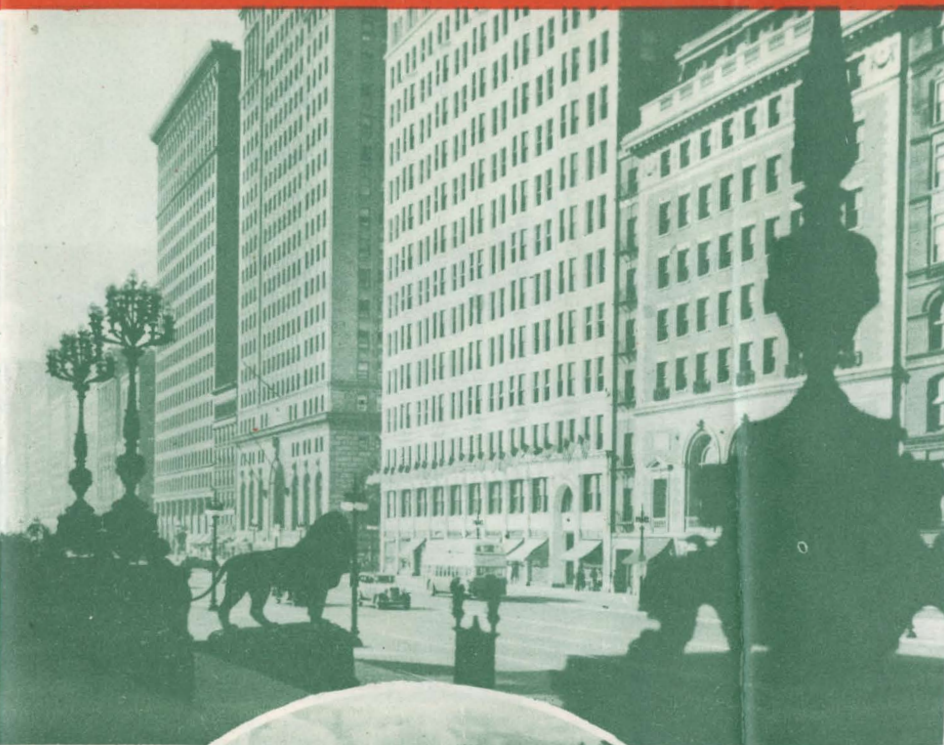
These words set to the tempo of swiftly flying wheels, provide a symphony of the West for Northern Pacific travelers to America's great vacation lands.

And with the scenic grandeur to be seen from your train window, you may enjoy the comforts of new all-room Pullmans, a luxurious Observation-lounge car—or for the economy-minded, the comforts of newly conditioned Tourist sleeping cars or the luxurious coaches with the famous "Sleepy Hollow" adjustable, reclining seats.

Northern Pacific famously good meals add to the pleasure of your trip, served in a sparkling new diner-lunch car where you can enjoy lunch-counter service or full course meals at the tables.



THE COVER PICTURE—Beartooth Butte and Lake on the spectacular Red Lodge HIGH Road to Yellowstone Park.

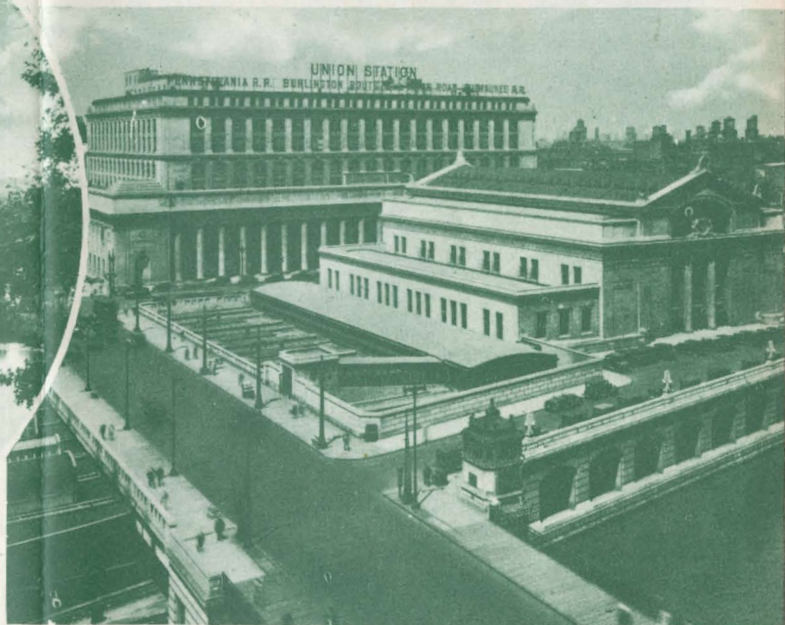


Michigan Avenue from the steps of the Chicago Art Institute, one of America's famous streets.

CHICAGO, second largest city in the United States and hub of the nation's railroad systems, is the starting point for our journey West. The Streamlined North Coast Limited leaves from the Chicago Union Station and runs via the Burlington Route across northern Illinois and along the Wisconsin bank of the Mississippi River to St. Paul.



Where "Ol' Man River"—the Mississippi—gathers his forces to roll southward, the Burlington Route basks in the smile of nature for 300 miles—Savanna, Illinois to St. Paul.



Chicago Union Station, one of the largest in the world, opened in 1925. Its cost was \$60 millions. Trackage and other facilities put the total at \$95 millions.



St. Paul, capital of Minnesota and known nationally as the Winter Carnival City, as seen from the High Bridge across the Mississippi River, whose waters reflect its tall buildings.



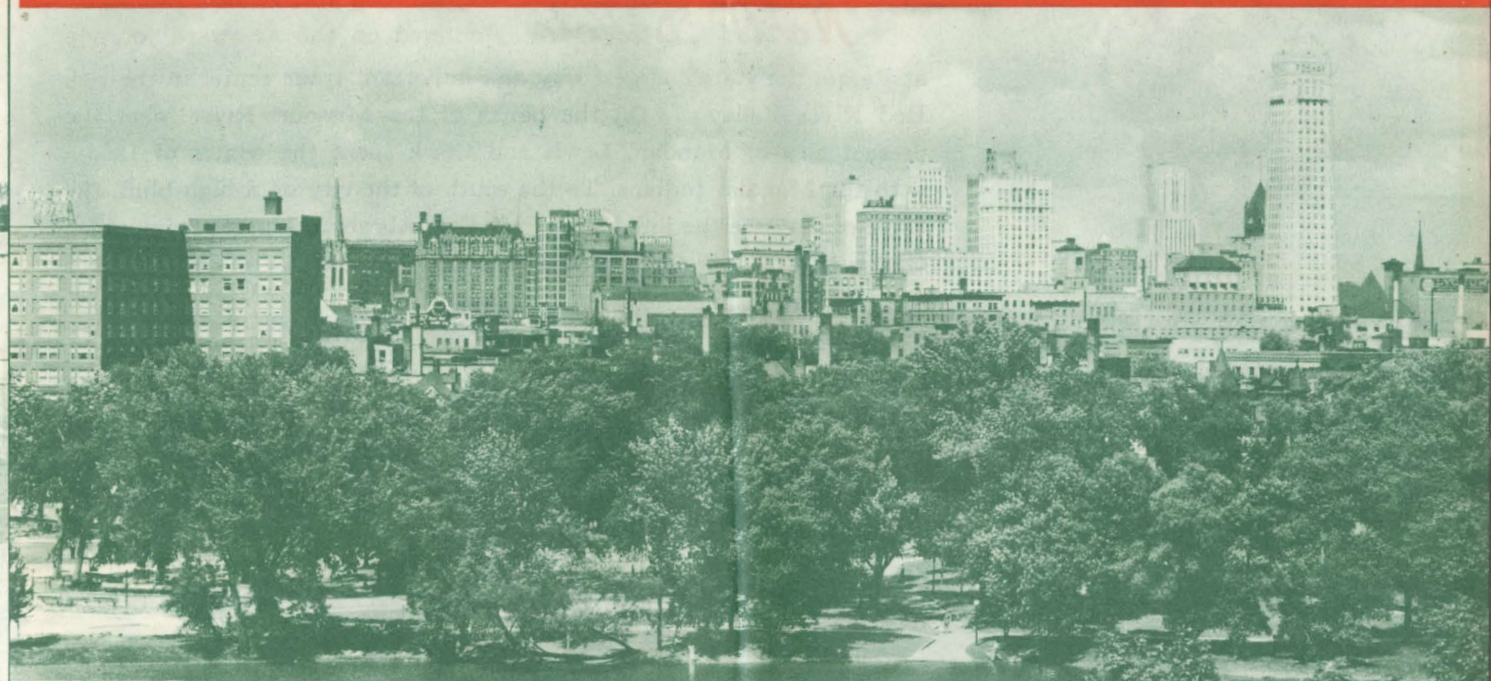
Minnesota's magnificent marble capitol, one of America's most beautiful public buildings. State Historical building to the right.

Twin Cities - Minnesota

The Twin Cities, St. Paul and Minneapolis, are the gateway cities to the Northwest and the lovely Minnesota lake region, "Land of Sky Blue Waters". They mark entry into the dairy and livestock ranching country of the Northwest as well as the iron mining and timber districts of the North Woods. Thousands of visitors pass through these cities each summer on their way to Minnesota's 10,000 lakes and playgrounds. Both cities are justly proud of their beautiful lakes and parks, homes, retail business districts and educational institutions.

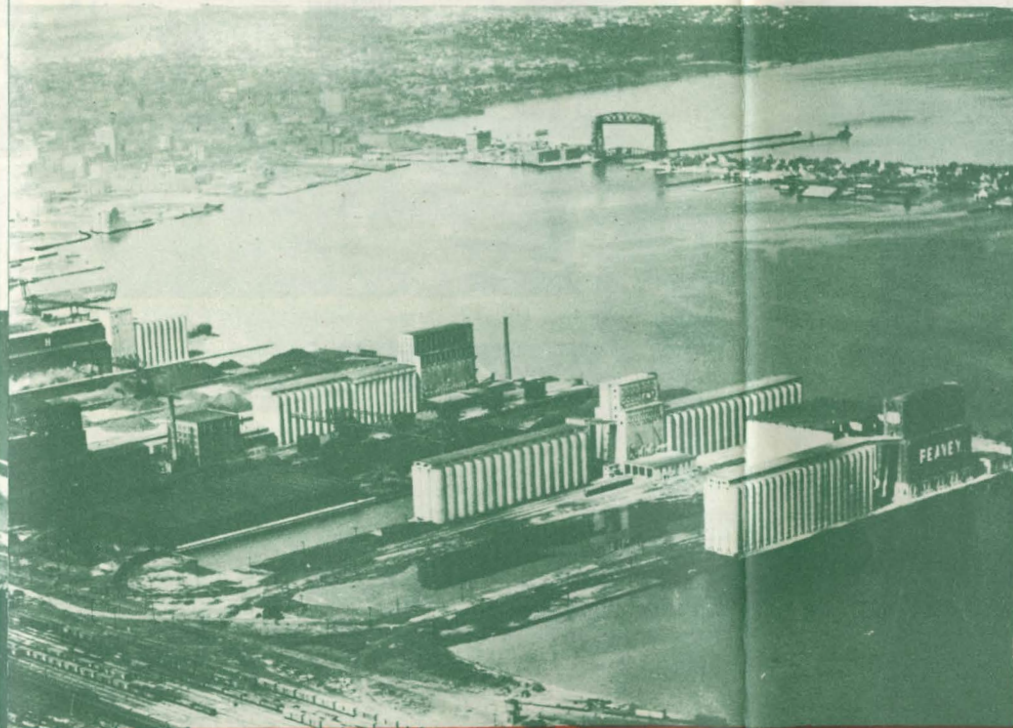
Thousands of beautiful lakes in Minnesota, of which this is only one, offer recreation to summer visitors. Many lakes are seen from Northern Pacific trains.





Minneapolis, the larger of the "Twins", as seen from Loring Park. Power derived from St. Anthony Falls contributed to its early development as a great flour milling center. The University of Minnesota is located here.

The great inland harbor of Duluth-Superior at the head of navigation on Lake Superior, is second only to New York in gross shipping tonnage.



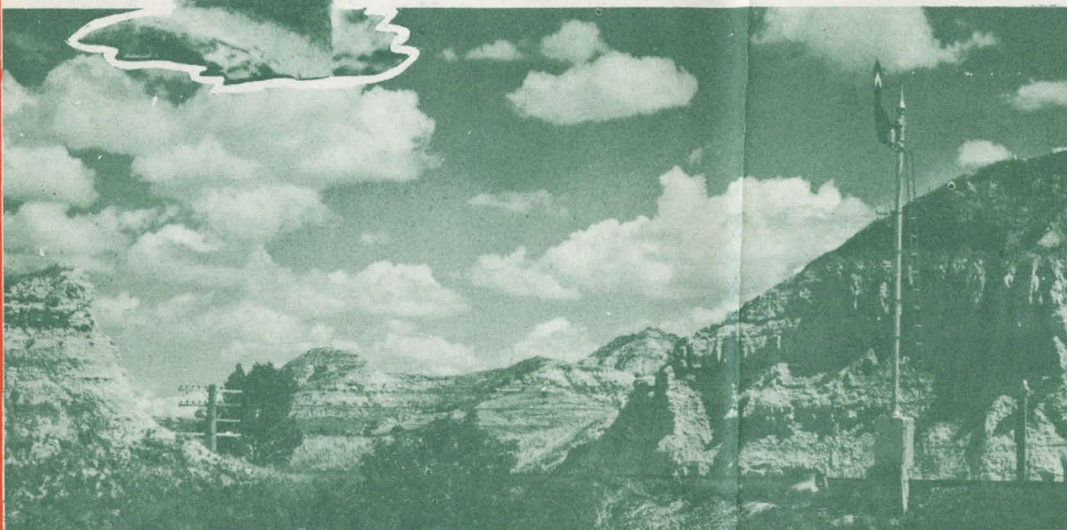
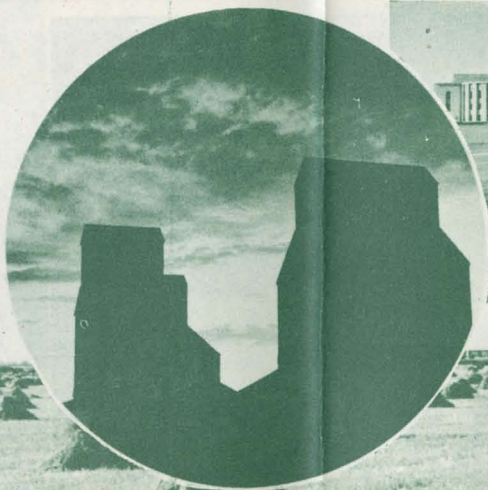
Beautiful Minnehaha Falls in Minneapolis, immortalized in Longfellow's "Song of Hiawatha", attracts thousands of visitors annually. It is located in one of the city's 143 parks.

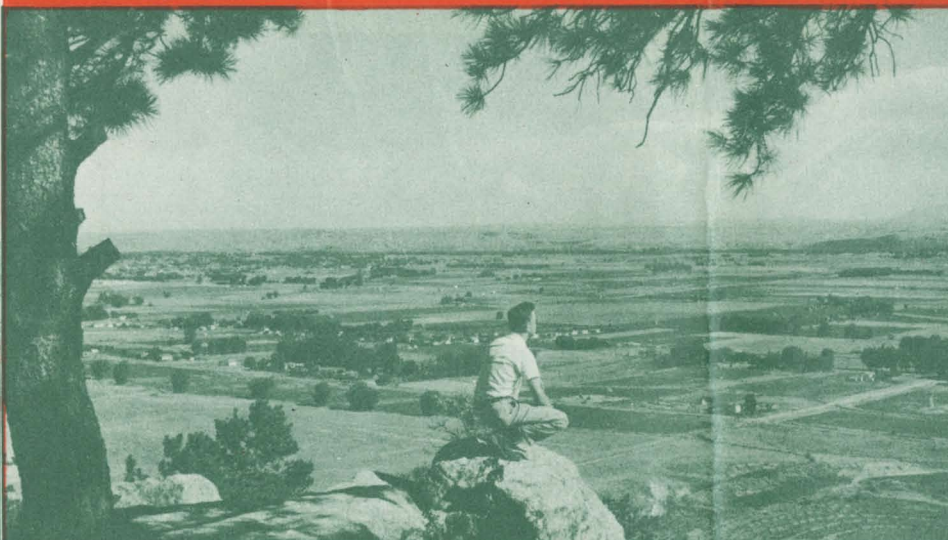
North Dakota is entered on the westward journey at Fargo, the state's largest city and important trade center in the rich Red River Valley . . . On the banks of the Missouri River, near the present city of Mandan, Lewis and Clark spent the winter of 1804-5 with the Mandan Indians. To the south of the city on a high bluff, the traveler may see the buildings of old Fort Abraham Lincoln from which Custer began his ill-fated campaign against the Sioux.

Erosion from water and wind have produced many weird shapes in North Dakota's Bad Lands, in places brilliantly colored by burned-out lignite fires. This region, now officially designated Theodore Roosevelt Memorial Park, is traversed by the main line of the Northern Pacific.

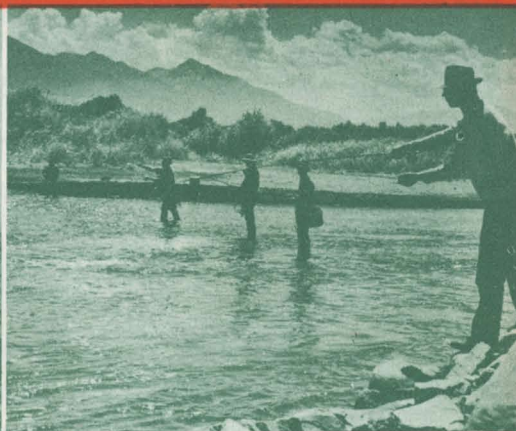
Proudly, North Dakotans point to their 21-story modern-style capitol at Bismarck, visible for miles across the level prairie lands.

Symbolic of North Dakota's prominence as a wheat producing state, is this silhouette of grain elevators against a sunset sky. Dakota's horizon-wide wheat fields have been called the "Breadbasket of the Nation."





Overlooking the fertile Yellowstone Valley near Billings.



Some of Livingston's annual Trout Derby contestants fishing for trout in the Yellowstone River. Top prize—\$1,000.

Montana The Treasure State—rich in minerals, agricultural products, livestock, and recreational facilities, is likewise rich in the historical lore of pioneer days, and the grandeur of its scenic beauty. Third largest state in the nation, Northern Pacific main line tracks span its entire length affording travelers a feast of scenic splendor with its ever-changing panorama of mountains, forests, lakes, rivers, fertile valleys and rolling plains. Its atmosphere embodies the romantic essence of the old fur brigades, the fever of gold seekers, covered wagon trains, pony express, the Vigilantes, Indian warfare and cattle barons. It's a big country and a beautiful one!

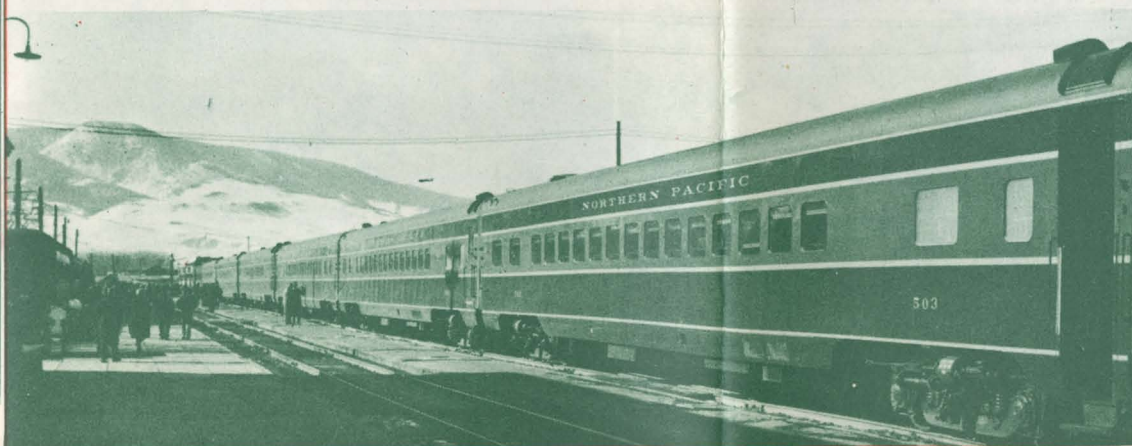


Round-up time on the plains when ranchers harvest their beef crop in the fall, is a big event, preceding the drive to railhead and shipment to market.

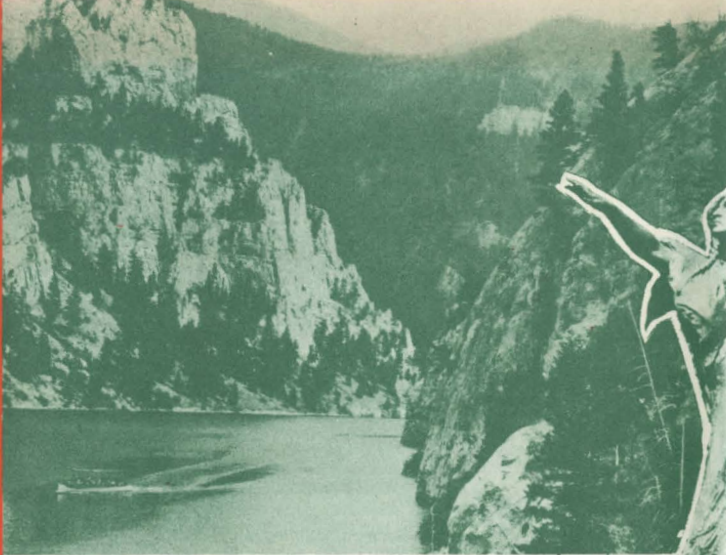
Guardians of the Flock. A shepherd and his dog watch over their sheep high in the Rockies.



Northern Pacific's streamlined North Coast Limited at Livingston station, the diverging point for the magic Yellowstone Wonderland.



Butte, Montana, "greatest mining camp on earth", as seen from the campus of Montana School of Mines. The mines produce much of the nation's copper.

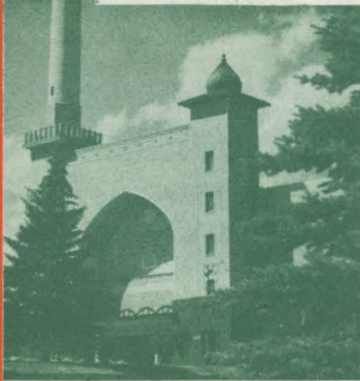


Gates of the Rocky Mountains, a spectacular gorge of the Missouri River near Helena, was discovered and named by Lewis and Clark. Their guide was the 19-year old Indian mother, Sacagawea.

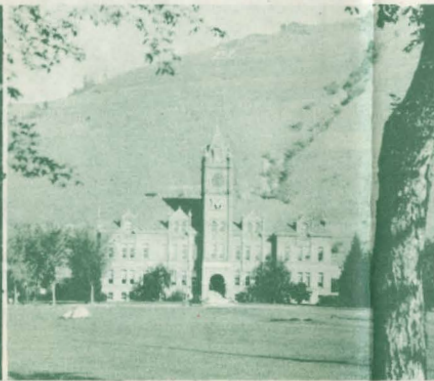


Modern Fairweather Inn at historic Virginia City, Montana's first territorial capital. Beside it stands an old building which was Montana's first hotel in the boom gold days of Alder Gulch in the 60's.

This unusual building resembling a Mohammedan mosque, is the Civic Center of Helena, capital city of Montana.

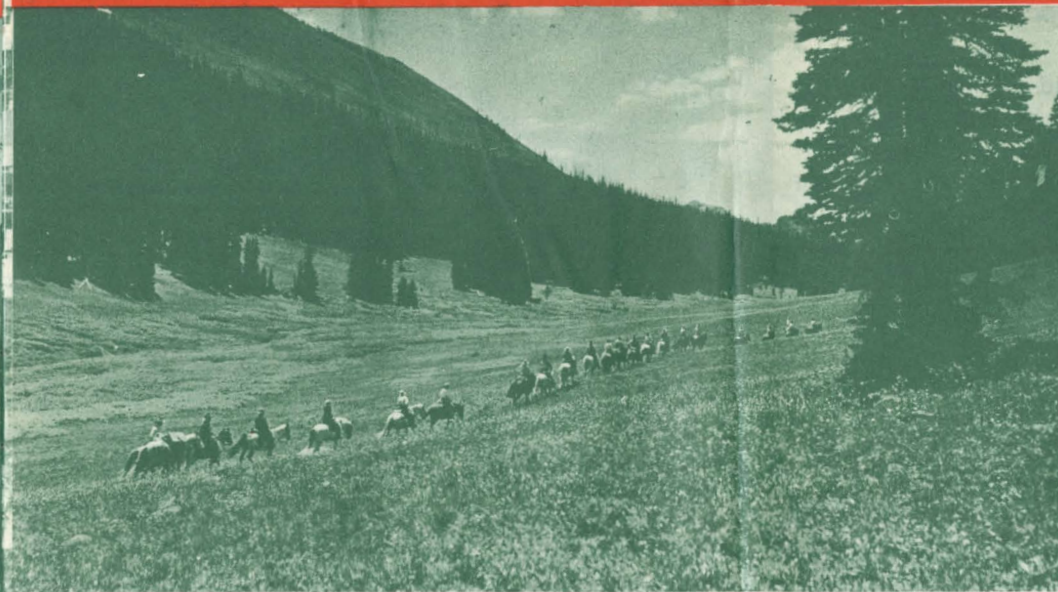


Administration Building of University of Montana at Missoula, the "university with a mountain on the campus".



Montana's fertile valleys are responsible for the state's increasing importance in wheat production as well as other crops.

Autumn in the Rockies—a beauty spot along the Northern Pacific in famous Gallatin Valley near Bozeman.



Trail riders out to explore pine-scented forests of the Rockies, the lofty trails at timberline or open mountain meadows.



An eastern visitor being fitted with chaps for a ride over mountain trails.

Dude Ranches in Montana, Wyoming and Washington offer to thousands of visitors annually, a taste of western ranch life as a typical form of American vacation not to be had or enjoyed elsewhere. Between Forsyth and Missoula, Montana, Northern Pacific trains are in the heart of the ranch country where scores of dude ranches, livestock ranches, hunting lodges, resort hotels and wilderness camps are guest headquarters throughout the summer, and some the year round. In this scenic area are staged summer rodeo celebrations which are nationally known for western color and thrilling cowboy feats.



Guest cabins are picturesquely located.



Ranch activity centers about the corral where guests' horses are selected and saddled for the trail.

"Come and get it!"—a welcome call from the ranch dining room which never goes unheeded.

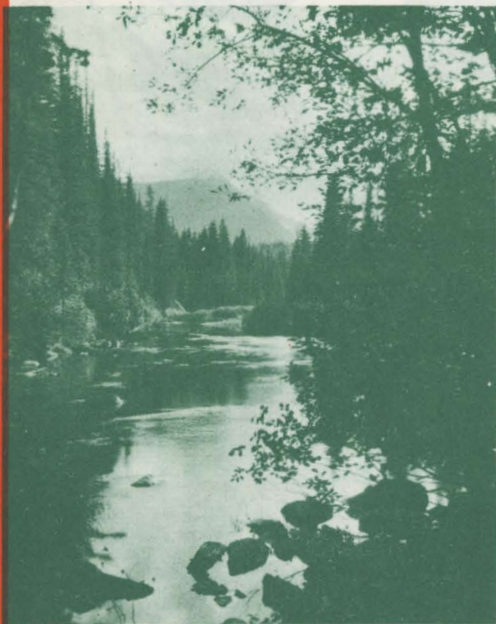


Blue Lake in Montana's spectacular Crazy Mountains, a range of the Rockies seen near Big Timber.

Mountains and Scenic Rivers for more than a thousand miles, file past the windows of Northern Pacific trains on the journey through Montana, Idaho and Washington. Twenty-eight ranges of mountains, in all, comprise some of America's grandest scenery. The Continental Divide, Hellgate Canyon, Clark's Fork Canyon and the summit of the Cascade Range are among the spectacular sights which call forth special admiration.



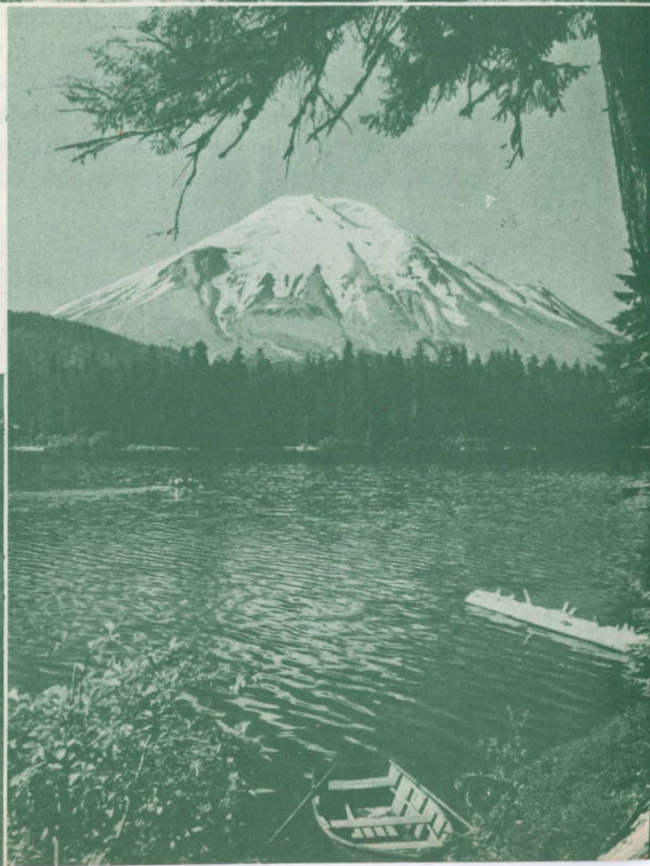
Winter beauty in the Absaroka Range of the Rockies south of Livingston.



Montana abounds in beautiful rivers like this one where fighting trout test the fisherman's skill.

Lovely Mt. St. Helens, one of the snow-crowned giants of Washington's Cascade Range, is noted for its symmetrical beauty.

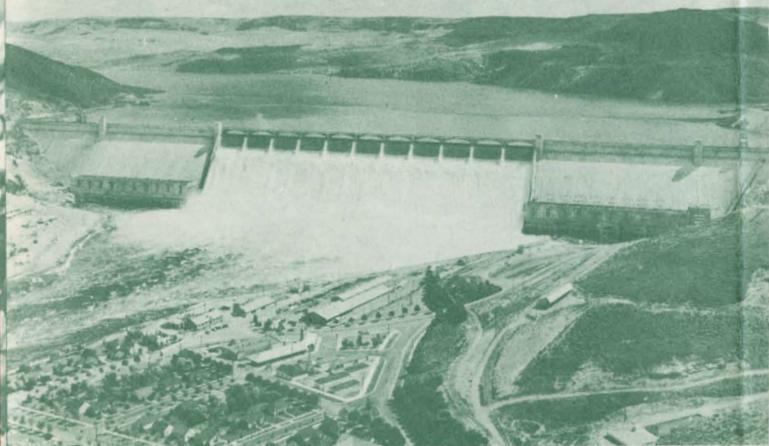
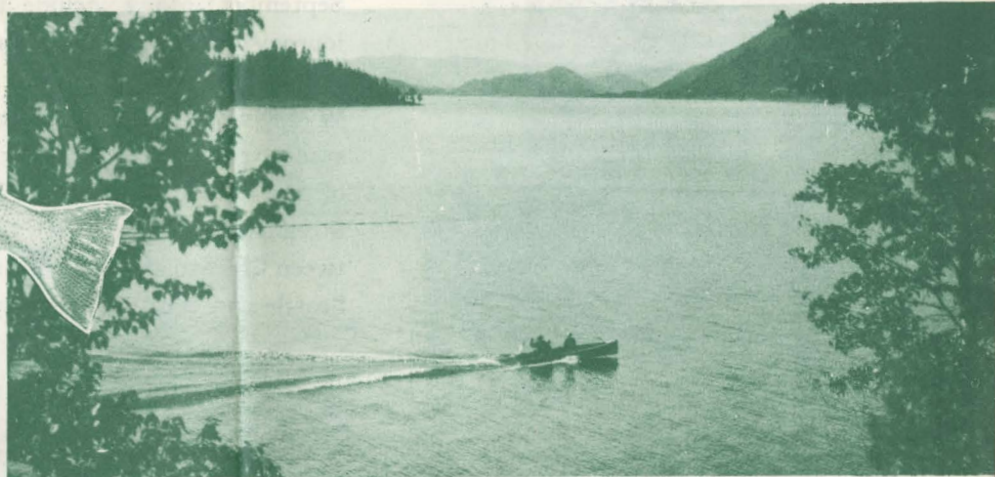
Northern Pacific main line tracks ascending the mountain grade toward Bozeman Pass, Absaroka Range in the background.





Bing Crosby and his 15 $\frac{3}{4}$ -pound rainbow trout caught in Lake Pend Oreille. The record catch, made in 1947, weighed 37 pounds.

Beautiful Lake Pend Oreille in northern Idaho along the main line of the Northern Pacific Railway. Transcontinental trains cross an arm of the lake on a mile-long bridge.

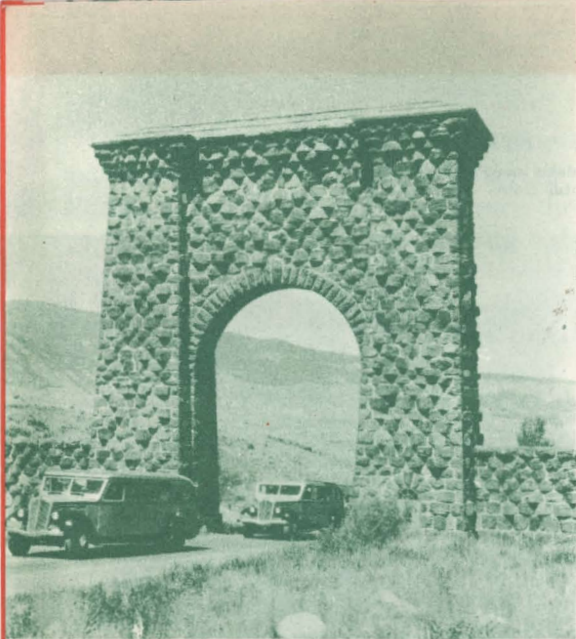


Grand Coulee Dam, biggest man-made structure on earth. Its power capacity is rated at more than 2 $\frac{1}{2}$ million horsepower. It is easily reached by motor sidetrip from Spokane.

A portion of Spokane's business district as seen from one of the city's scenic boulevards. Distributing center for the far-flung Inland Empire, it is the largest city between Minneapolis and Puget Sound.



Inland Empire and its "Queen City", Spokane, extend a hearty welcome to its vast domain rich in agriculture, mining, forestry products and recreational facilities. Seventy-six beautiful lakes are within 50 miles of the city and 300 more lie within easy reach by train or auto. Huge Grand Coulee Dam, 90 miles from Spokane, will eventually supply irrigation for a million acres of fertile soil in the Columbia basin.

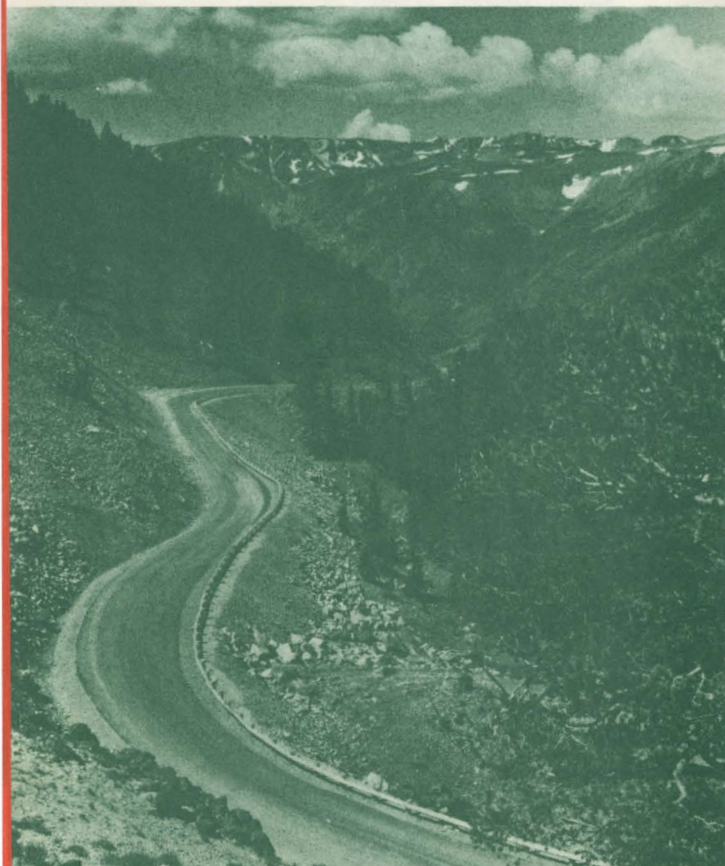


Gardiner Gateway identified by this picturesque stone arch, is the northern and original entrance to Wonderland.

Magic Yellowstone

America's oldest, largest and most popular park, is visited annually by thousands of people from all over the world. The summer season is June to September. Many include the park on their transcontinental journey over the Northern Pacific Railway by entering one of the principal gateways, Gardiner, Mont., Red Lodge, Mont. or Cody, Wyo. Newest is the Red Lodge Gateway, reached by a sensational scenic trip over the Beartooth Mountains—literally, "On Top of the World"! . . . Through Pullmans operate daily on the Streamlined North Coast Limited during the park season between Chicago and the Gardiner and Cody gateways and between Seattle and Gardiner gateway.

Along the thrilling Cody Road where it skirts the shores of Buffalo Bill Lake.



A view of the Red Lodge Road in Rock Creek Gorge on the way to the lofty plateaus of the Beartooths in the distance.

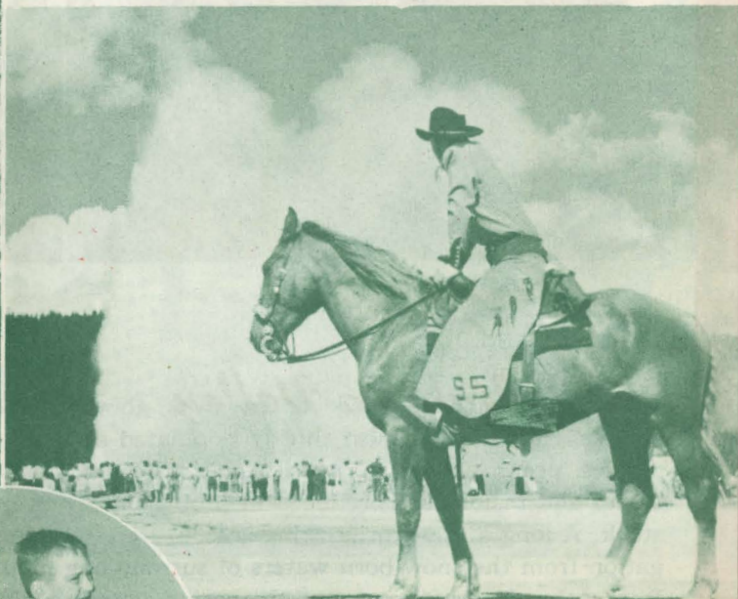


Beautiful Yellowstone Lake from famous Fishing Bridge. No license is required for fishing in the park.



No picture can do justice to the magnificent golden Grand Canyon of the Yellowstone.

Of all natural phenomena none is better known than Old Faithful Geyser. It is the supreme "showman" of this magic region.

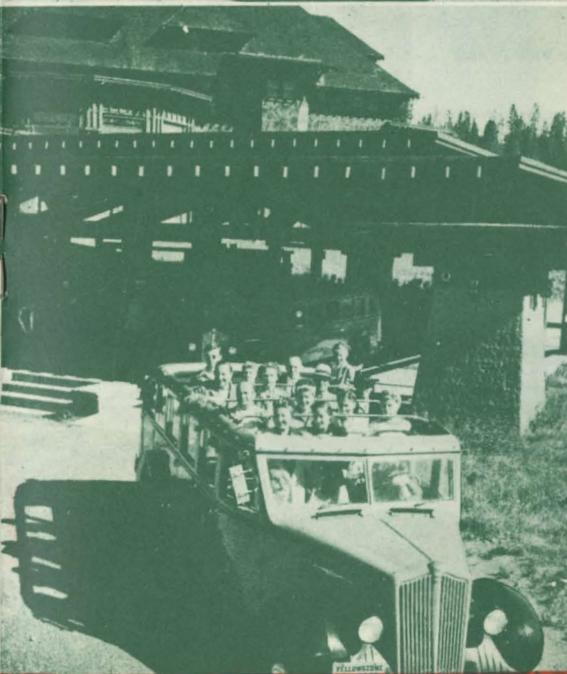


Just waiting for the "big blow"!

Yellowstone's famous hold-up bears are a familiar sight on all of the park's highways.

Two of Yellowstone's herd of 1,000 bison at home in the eastern section of the park.

Open top buses transport Yellowstone visitors on regular schedules over the park highway system. Drivers point out and explain the phenomena and other points of interest along the way.





Loading a Northern Pacific refrigerator car with Yakima Valley fruit for eastern markets.



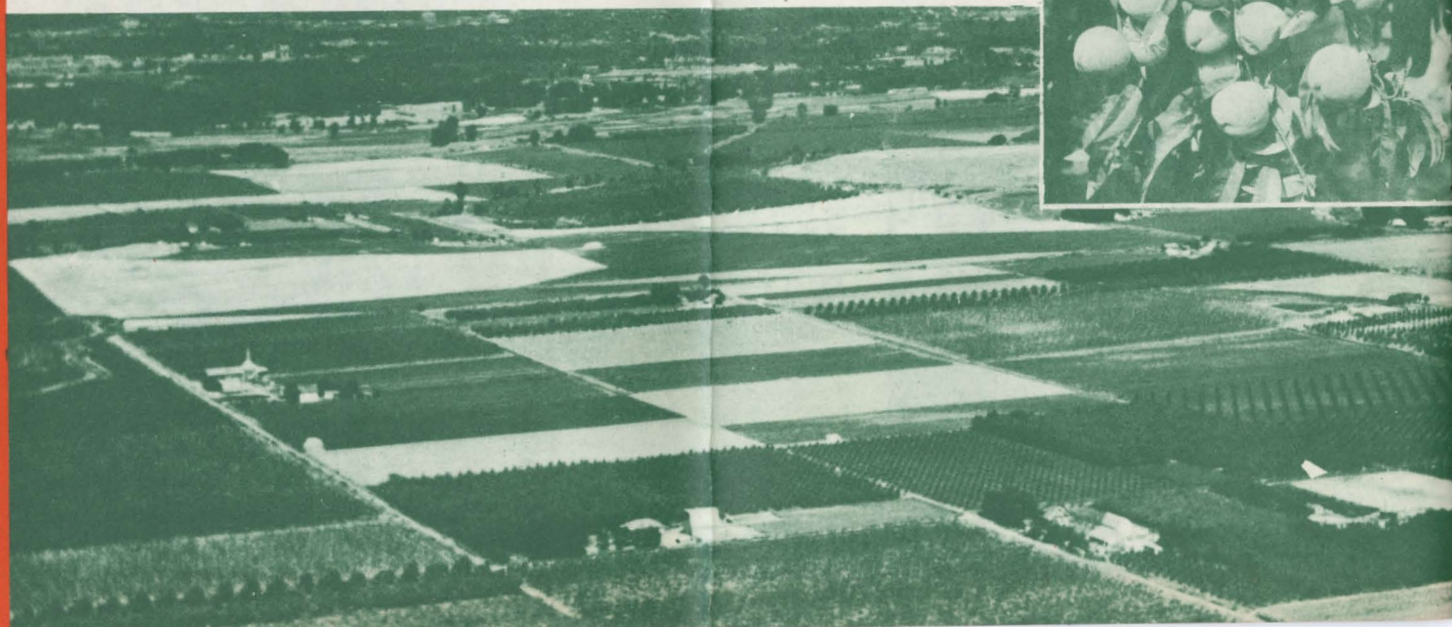
Sorting and grading apples in one of the valley's modern fruit packing plants.

Grapes are raised in abundance in Yakima Valley.



Yakima Valley about halfway between Spokane and Seattle, is one of the most thickly populated agricultural localities in the West. Apples, pears, peaches, prunes, grapes, cherries, apricots, plums, berries, vegetables and melons are produced in profusion, as are other farm crops and livestock. A long and warm growing season, free from frost, plus the magic of irrigation from the snow-born waters of surrounding mountains and the fertile soil from volcanic ash thrown on the region years ago by Mt. Rainier and other volcanos of the Cascade Range, have combined to make this one of the most productive regions in the nation . . . Yakima is Indian for "Black Bear". The name applies to the valley, to the river which waters it and to the city of Yakima, heart of the region's industry.

Overlooking the broad fertile acres of Yakima Valley with its regular pattern of orchards and fields.



Part of the business section of Tacoma with the great white form of Mount Rainier towering nearly three miles high in the distance.

It isn't even necessary to leave the city to see some of the giants of the big timber country. Here is a 9-foot diameter tree which is growing in the 640-acre Point Defiance Park where Tacoma plays.



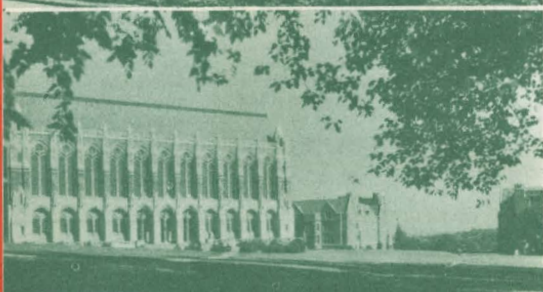
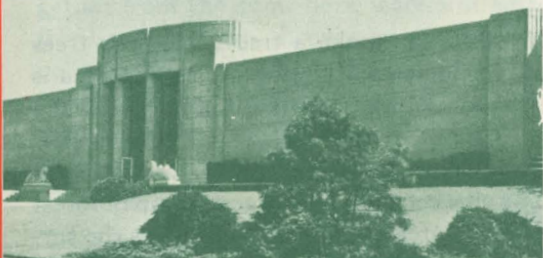
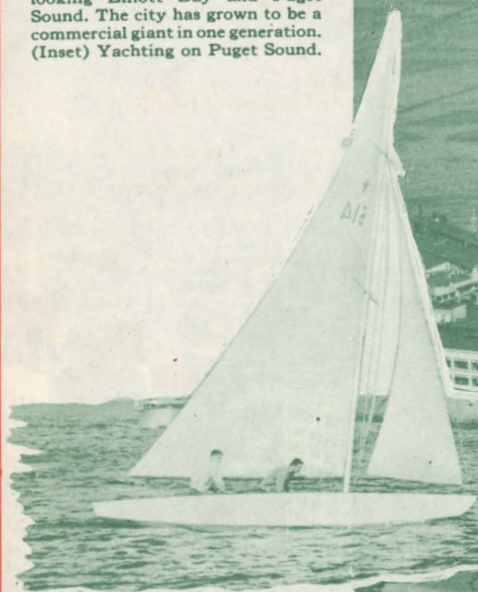
Tacoma "Only God can make a tree", and it is trees that make Tacoma the forest products capital of America. Tacoma is one of the Pacific Coast terminal cities of the Northern Pacific and commands its world port on Commencement Bay in Puget Sound. It is western entrance to Rainier National Park and eastern gateway to the Olympic wilderness. The city contains the largest group of forest products industries in the United States. Mild climate enables the surrounding country to grow rare plants and shrubs of both hemispheres.

A field of daffodils in Puyallup Valley near Tacoma—Mt. Rainier in the distance. In recent years this area has become one of the most important bulb growing centers of America.

Sorting logs in the mill pond of one of Tacoma's large sawmills.



Seattle's business district overlooking Elliott Bay and Puget Sound. The city has grown to be a commercial giant in one generation. (Inset) Yachting on Puget Sound.



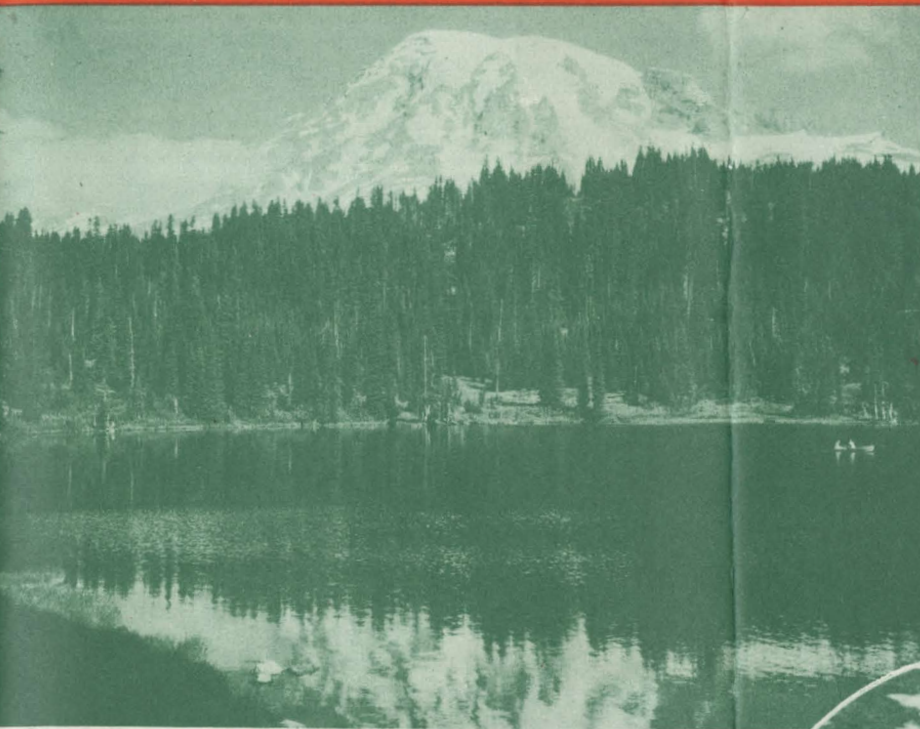
Seattle DOOR TO THE PACIFIC.

Down over the Cascade Mountains, Northern Pacific trains descend into a realm of flowers and holly, green forests, white mountains, foaming streams and blue ocean. Its metropolis is Seattle, nearest United States port to the Orient and Alaska, where East and West, Far North and trans-Pacific blend into a setting of never-ending beauty and interest.



(Left top)—Art Museum, Volunteer Park. (Center)—Library, University of Washington. (Bottom)—Seattle skyline from sightseeing boat on

Famous floating bridge on Lake Washington connecting Mercer Island with the mainland. A movable span permits navigation to pass from one part of the lake to another.



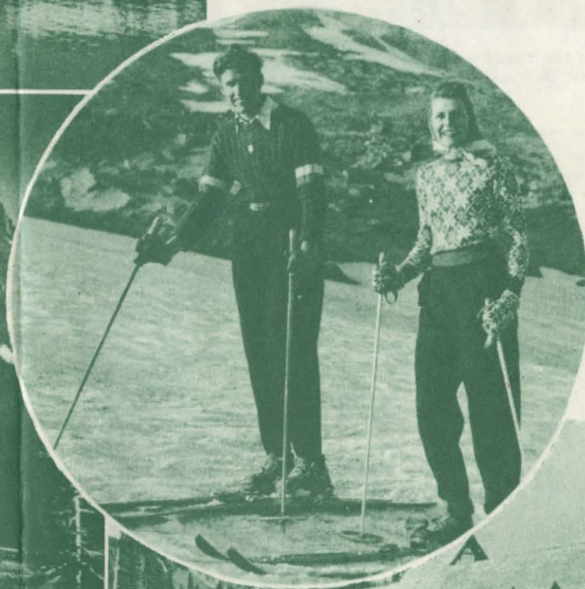
Rainier's snowy crown rises 14,408 feet above sea level and is here shown perfectly mirrored in the clear waters of Reflection Lake.

The Mountain

that was God—or Tahoma, the name by which the Indians knew Mount Rainier long before the coming of the white man. Monarch of the Cascades, Rainier's great white dome dominates the Puget Sound country. Thousands of visitors annually enjoy the alpine grandeur of Rainier National Park in summer and its perfect skiing terrain in winter. Many national championship events are held on its vast slopes.



Framing one side of Paradise Valley, the rugged Tatoosh Range presents a constant challenge to daring climbers as a sort of preliminary to tackling the main job of climbing Rainier itself. . . Rainier has been called the greatest single mountain glacial system in the world. Twenty-eight glaciers radiate from its icy summit, more than are found in all of Switzerland. Rainier Park buses operate daily during the park season between Seattle-Tacoma and Paradise Valley.

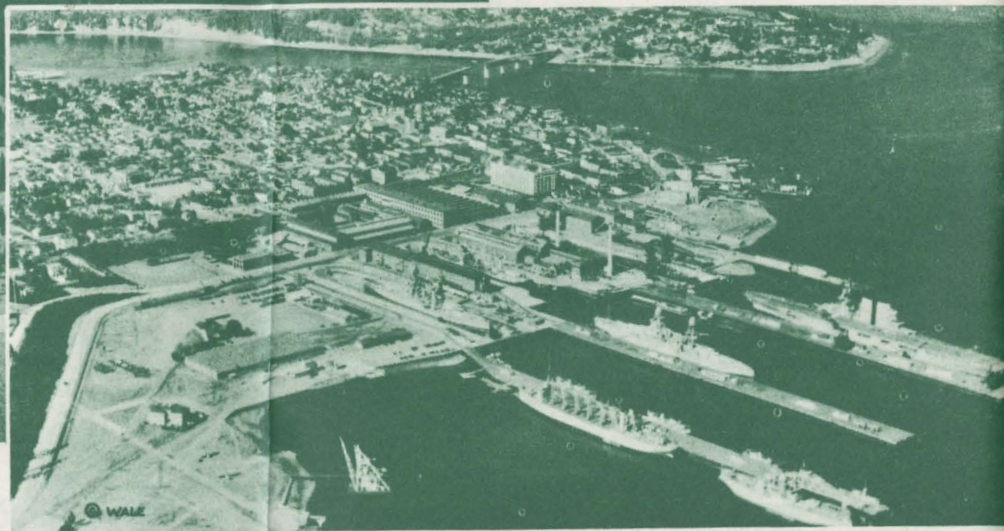


Hospitable Paradise Inn, at 6,000 feet altitude on the slopes of Mt. Rainier, is vacation headquarters in the park. Of rustic construction, its architecture blends perfectly with the surrounding alpine wonderland.



The snow-crowned Olympic Range, the most spectacular parts of which are included within the boundaries of Olympic National Park.

The busy city of Bremerton, an hour's ferry ride across Puget Sound from Seattle, is the site of a huge navy yard and Pacific Northwest home of Uncle Sam's ships of war.



A portion of the business district and harbor of Vancouver, B. C., Canada's Pacific Coast metropolis.



Over Puget Sound from Seattle lies the great Olympic Peninsula with its interesting harbors and mighty forests and mountains—a primitive area of spectacular and varied scenery, easily accessible for leisurely motoring or wilderness “roughing it”. . . North, across Puget Sound lie the friendly cities of our neighbor, Canada, reached by pleasant cruise ship from Seattle.



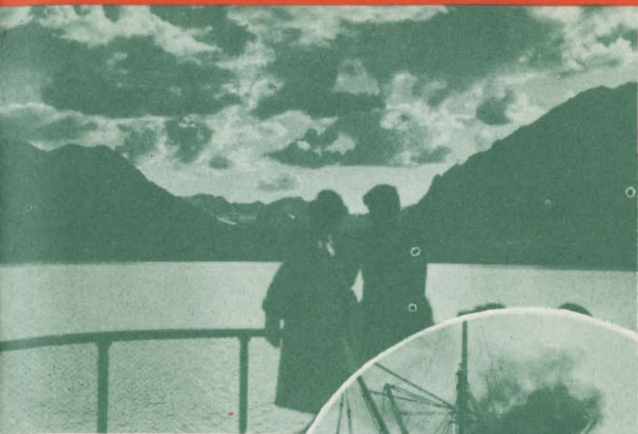
Inner Harbor and beautiful Empress Hotel in Victoria, B. C., from the grounds of the Parliament building.

View from Orcas Island, one of the beautiful San Juan group in the upper part of Puget Sound. Home of Moran State Park.

Placid water and mountain grandeur combine in producing travel enchantment found only on Inside Passage cruises.

Alaska — LAND OF THE MIDNIGHT SUN

Steering toward the north star from the Pacific Northwest, a mountain-walled voyage over the smooth Inside Passage leads to Alaska, "America's last frontier". World travelers declare this cruise one of the most unusual on the globe. Quaint villages, native Indian settlements, modern small cities, gigantic blue glaciers, peaceful forests, mighty mountains, streams and waterfalls appear in the panorama viewed amazingly from steamer chairs or observation rooms. Alaska cruises can be made at moderate cost in as little as a week's time, round trip from Seattle.



Bon voyage! Alaska-bound steamer backs from its berth at Seattle dock.

Totems—Alaskan trademarks—tell the romantic story of native family and tribe.



Juneau, modern capital of Alaska. The Alaska-Juneau mine may be seen on the mound-side at the right.



Mount McKinley's majestic peak towers 20,300 feet above sea level, the highest in North America. The spectacular reserve surrounding McKinley constitutes our farthest north national park.

Mighty Columbia Glacier in Prince William Sound, reaches far back into the mountainous interior. Vibrations from the ship's whistle frequently dislodge huge icebergs which crash into the sea with thunderous roar.



Metropolis of Oregon, Portland owes a part of its prominence to its fresh water harbor on the Willamette and Columbia Rivers, 100 miles from the open sea.



A little friendly "get-together" in one of Portland's parks which are a source of pride to the citizens.

Portland the Rose City, greets a multitude of visitors at its renowned annual Rose Festival in June, and throughout the year. "For You A Rose in Portland Grows" is no idle boast . . . Snow-spired Mount Hood, watching over the city and surrounding fertile valleys, is the "goal post" for vacation travelers as it formerly was for wagon trains in the pioneer days . . . Beautiful homes are especially evident in this city where the climate, fine water, the surrounding resort region and commercial advantages make it a place where people like to own homes and live.



Ships in world commerce dock along Portland's 30-mile waterfront. This vessel is loading lumber for export trade.

Picturesque Timberline Lodge, alpine resort high on the slopes of Mount Hood, is 60 miles east of Portland. It is reached via the scenic Columbia River Highway, has winter and summer accommodations for 225 guests and is famed as a skiing headquarters where many championship matches are entertained.





Far-famed Multnomah Falls, second highest in the United States, plunge 620 feet and are one of eleven exquisite falls along the upper Columbia River Highway.



The Columbia Gorge from Crown Point, a vantage point high on the bluff along the Columbia River Highway. From this point 40 miles of river, mountain and forest beauty may be seen.



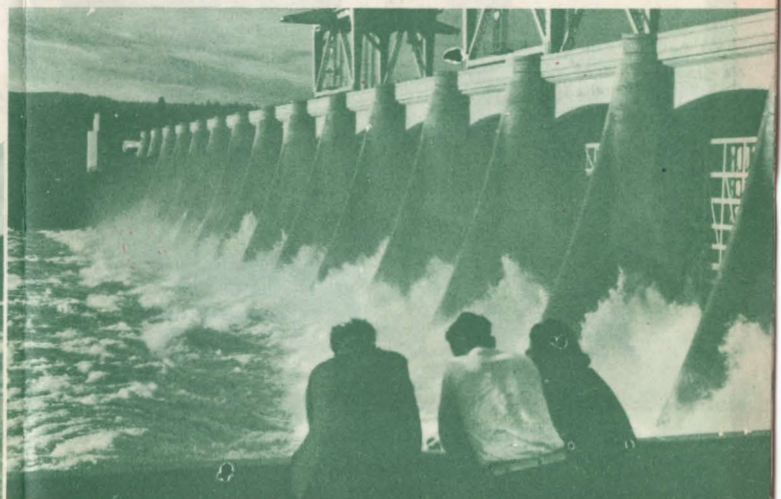
Along the northbank of the Columbia River near Wishram, Wash. Main line tracks to Portland in foreground.

Visible from the train at North Bonneville, Wash. is the huge Bonneville Dam, built at a cost of \$62 millions. It supplies low-cost electric power for a growing industry in this area.

Among the popular beaches of the North Pacific is this one at Seaside, Oregon, the end of the famous Lewis and Clark trail.



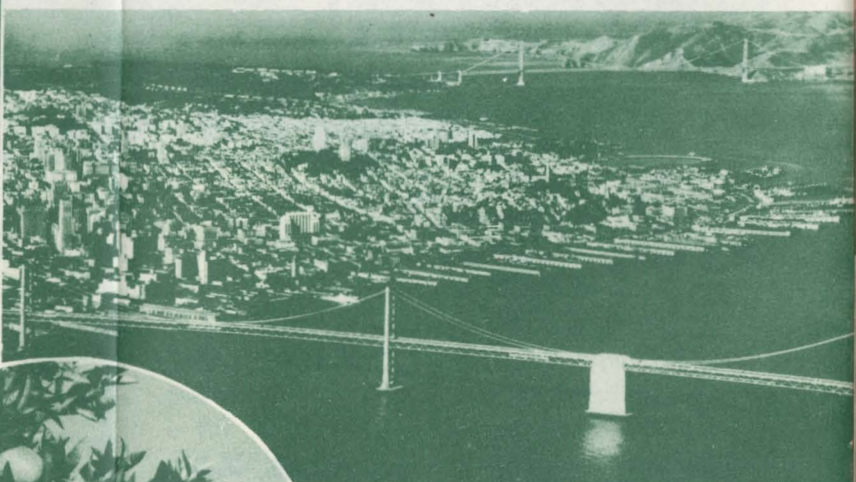
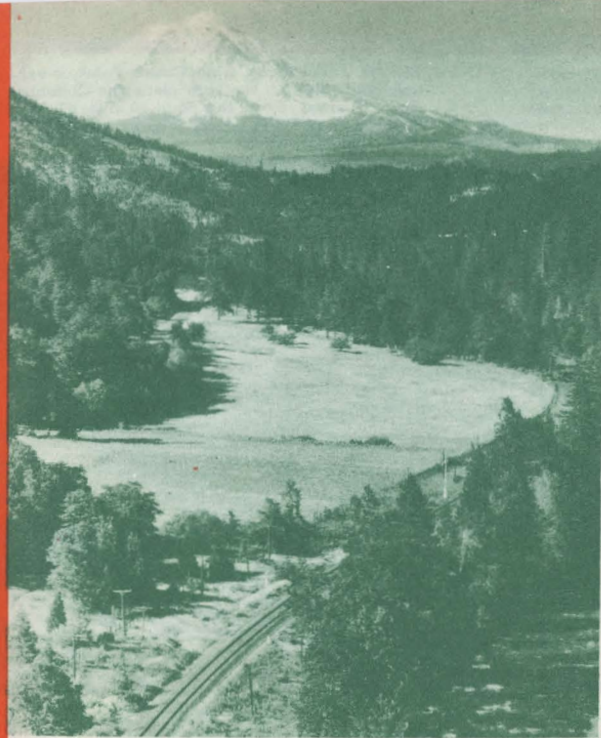
Columbia River and Pacific Beaches are among the varied charms of this favored region shared by both Oregon and Washington easily reached from Northern Pacific terminals. To the Pacific Northwest visitor it is not a question of what to see, but rather a choice of so many attractions that he can pick almost anything he wants ranging from the ocean beaches at sea level to alpine wonderlands high on the slopes of snow-clad mountain peaks, and the colorful life to be seen in an important center of rail and ocean commerce.



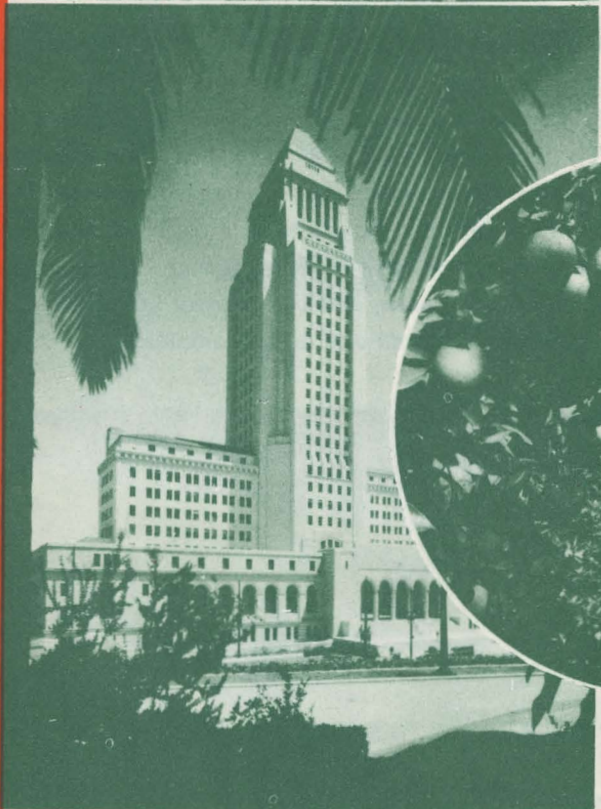
Mount Shasta, one of the mountain monarchs of America, looms 14,390 feet and is within view of rail travelers for more than three hours.

California via the PACIFIC NORTHWEST

Economical round trip fares to California make it possible to see the scenic Northern Pacific country and all the Pacific Coast enroute without additional rail fare from most points. The route of the Streamlined North Coast Limited furnishes travel at its best—numerous side trip and stop-over attractions, varied scenery changing with the seasons and a constant high standard of comfort. "See all the West" when visiting California!



San Francisco and the Bay region. The great span of the Golden Gate bridge may be seen in the distance and the San Francisco-Oakland Bay bridge is the foreground. In the circle—Golden oranges nod in the warm valleys of southern California while in contrast, snow-crowned mountain peaks loom in the distance.



The strikingly modern lines of Los Angeles City Hall is framed by palm fronds.

Hollywood on a festive night when the stars above look down on the stars below.



SIGHTSEEING TOURS

... In the West

When in the West, plan to see as much of its beauty and interest as you can. Sightseeing companies have regularly scheduled trips in the important western cities which enable visitors to see the most in the least time and at low cost . . . In Montana there are a number of thrilling mountain tours which can easily be combined with Yellowstone or transcontinental trips . . . Or if you prefer to do your own driving, a private car can be rented. Your Northern Pacific agent will be glad to supply additional information about these services, to arrange extra sightseeing trips or for a car for your exclusive use.



Sunlight Basin, a region of spectacular mountain grandeur east of Yellowstone Park, is reached by "Yellowstone Extension" tours from Red Lodge, Billings, Mont., or Cody, Wyo.

Dominating the upper Puget Sound country, Mount Baker, (10,827 feet altitude) reached from Bellingham, Wash., is the center of a vast recreational area popular both for summer vacations and for winter sports. It is one of the numerous extinct volcanic cones of the Cascade Range and was known to the Indians as the "Great White Watcher".



ROUTE OF THE Streamlined NORTH COAST LIMITED



The Streamlined North Coast Limited in western North Dakota.

If you wish more detailed information and additional literature on specific resorts or on cities mentioned in this book, please fill in and mail this coupon to your *nearest* Northern Pacific office (listed to the right), or to

PASSENGER TRAFFIC DEPARTMENT,
NORTHERN PACIFIC RAILWAY
ST. PAUL 1, MINN.

I am interested in a trip by train to the Northwest. Please send me more detailed information and additional literature about trip (or trips) to

I plan to leave about..... (Date)

I am interested in ☐ Independent trip
☐ Escorted tour

Name.....

Address.....

City..... State.....

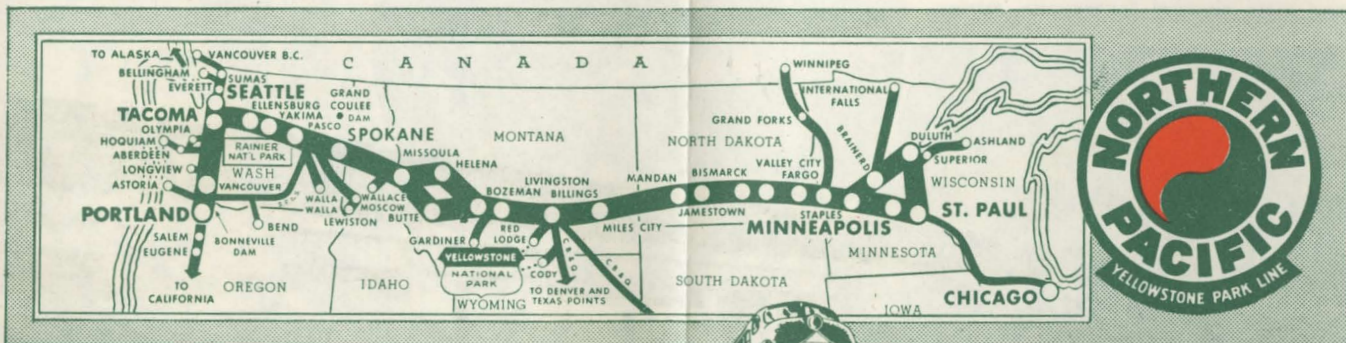
Telephone.....

NORTHERN PACIFIC TRAFFIC OFFICES

ARE CONVENIENTLY LOCATED IN THE FOLLOWING CITIES:

ATLANTA 3	1313 Healey Bldg.
BILLINGS	Northern Hotel
BOSTON 16	Room 8, Little Bldg., 80 Boylston St.
BUFFALO 3	795 Ellicott Square
BUTTE	405 Metals Bank Building
CHICAGO 4	73 E. Jackson Blvd.
CINCINNATI 2	615 Gwynne Bldg.
CLEVELAND 13	1334 Terminal Tower Bldg.
DALLAS 1	901 Southwestern Life Bldg.
DETROIT 26	810 Lafayette Bldg.
DULUTH 2	Room 111, Union Station
FARGO	N. P. Station
HELENA	Placer Hotel
KANSAS CITY 6	Room 206, 1025 Grand Ave.
LOS ANGELES 14	509 Associated Realty Bldg.
MILWAUKEE 3	913 Majestic Bldg.
MINNEAPOLIS 2	701 Marquette Ave.
NEW YORK 20	Room 534, 630 Fifth Ave.
OAKLAND 12	815 Central Bank Bldg.
OMAHA 2	309 W. O. W. Bldg.
PHILADELPHIA 9	Room 926, 123 S. Broad St.
PITTSBURGH 22	608 Park Bldg.
PORTLAND 4	439 S. W. 6th Ave.
ST. LOUIS 2	601 Boatmen's Bank Bldg.
ST. PAUL 1	333 Robert St.
SAN FRANCISCO 5	657 Market St.
SEATTLE 1	1401 Fourth Ave.
SPOKANE 8	701 Sprague Ave.
TACOMA 2	118 South 9th St.
TORONTO, ONT.	Room C-29, Union Station
VANCOUVER, B. C.	207 Stock Exchange Bldg.
VICTORIA, B. C.	912 Government St.
WASHINGTON 5	500 Shoreham Bldg.
WINNIPEG, MAN.	204 Paris Bldg.
YAKIMA	N. P. Station

ROUTE OF THE *Streamlined* NORTH COAST LIMITED



NORTHERN PACIFIC

Main Street of the Northwest