



Blackwater Lodge is 37 miles from Cody, Wyoming, located on one of the fast-falling streams, which tumbles down from the Absaroka Mountains to swell the Shoshone River. Blackwater's 23 log guest cabins are spaced up a scenic canyon off the Cody Road to Yellowstone Park. It is a quiet canyon in the trees, with trails leading to 11,000 feet elevations in the mountains.

The main lodge contains an office and lounge, furnished in rustic western style. Thirty guests can be seated in the ranch dining room, which has hand-made western furnishings in natural wood, with fireplace, bookshelves and restful chairs. Ranch gardens supply some fresh vegetables. Recreation room, in main ranch house, has a piano, phonograph, writing desk, books and games. A small ranch store sells post cards, candy and novelties.

Eight of Blackwater's cabins have private baths and showers. Guests in 15 cabins use a modern well-equipped central bath house. Forty guests can be accommodated at a time.

Corral, with the horses, is located 1,000 yards from guest cabins. Horseback trips go 10 to 20 miles for fishing, and picnic rides are 5 to 10 miles, moonlight rides 1 to 5 miles and sightseeing rides go high into the mountains. Fishing is also good within walking distance, both in Blackwater Creek and in the Shoshone. Entertainment includes horseshoes, picnic trips, moonlight roasts, dancing, etc.



Guest Cabins

Mr. and Mrs. Earl Brahler operate Blackwater Lodge in an efficient manner, aided by their daughter, Jean, two wranglers and two guides. Mrs. Brahler is a model very neat housekeeper. Mr. Brahler is an able manager and a hard



Earl Brahler

worker, and the whole Blackwater organization pitches in to provide guests with excellent accommodations and good meals.

Summer rates are \$70 per week per person for cabin with private bath, all meals and horses. Cabins without bath are \$50 and \$60. Children under 10 years half rate. Hunters are taken up to November 15.



Lillian Brahler

Arrange for reservations to Cody, Wyoming, and at Blackwater Lodge through any Northern Pacific Railway agent.

JUN 15 REC'D, 1948

Lillian Schaffner



BLACKWATER LODGE
IS RECOMMENDED
BY THE
NORTHERN PACIFIC
RAILWAY



Mt. Helena is Start of Ride to the Ranch

Lost Cabin Ranch Avon, Montana, is 51 miles from Helena, the state capital. The ranch car meets guests either at Northern Pacific station in Helena, or at the N. P. ticket office, Placer Hotel in Helena, where the N. P. Transport buses operate, or guests may arrive on certain N. P. trains right at Avon, only 13 miles from the ranch.

This is scenic, main-range-of-the-Rockies country, and the elevation of the ranch is 5,600 feet. The ranch is on the western slope of the mountains and has 6,000 acres devoted to hay ranching and the raising of horses and cattle. At present about 125 horses and 60 cattle are maintained.

Horseback riding in this high country is ideal; there are vast slopes and open plateaus, and also forest trails, lofty ridges and in an hour's ride from Lost Cabin corrals, one can top the Continental Divide, and see miles of scenic wilderness under blue skies, where great white clouds shade the warm sun.

The home ranch house is of logs, sturdily built, with an interior featuring a huge stone fireplace and rustic furniture. The floor is of flagstone. There is a dining room, bathroom with tub, toilet, hot and cold water. Three guest cabins have electricity and plain but comfortable furnishings. Tent cabins are placed in service when required. Guest quarters have stoves for the cool nights.



Mr. and Mrs. John R. Quigley, Jr.

For swimming, a private lake 200 feet from the cabins, will challenge the hardy, but the water is too cold for average folks. There's a shallow shoreline for youngsters to wade and sail boats, but parents or an attendant must stand by.

Ranch activities are chiefly riding, fishing, target shooting. Guests are taken to western dances and rodeos in the nearby towns of Helena, Deer Lodge, Ovando, Lincoln and occasionally to Butte. Guests are welcome to help with the haying and to help wrangle horses and calves.

Gates of the Mountains boat trips are also part of the ranch program, this being a magnificent ex-



Main Ranch House



The Ranch Gate

perience, well worth coming across the country to enjoy.

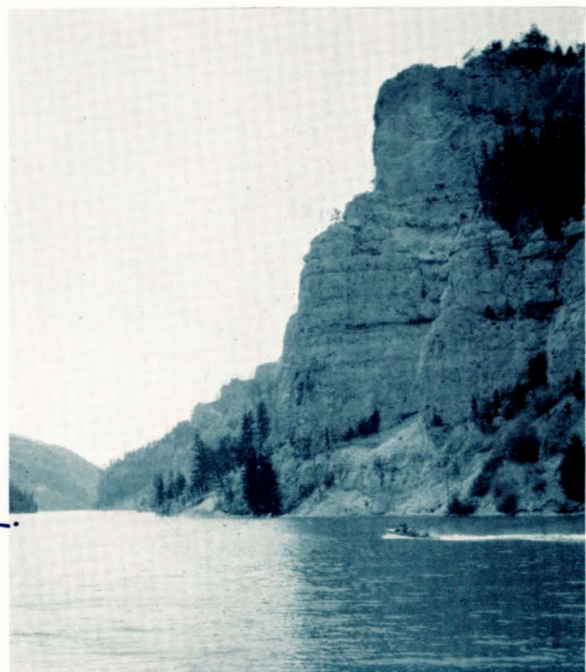
Mr. and Mrs. John R. Quigley, Jr. operate Lost Cabin Ranch. They have two sons, Jack 13 and Peter 7, and a daughter, Kitty, who is 3. John Quigley was born on the ranch, and was educated in Deer Lodge and Helena. Mrs. Quigley is also a native of Montana and was educated in Deer Lodge and Missoula.

Rates at Lost Cabin Ranch range from \$55 per week per person up to \$85, depending upon number in the party and length of stay. Children take the same rate, except very young ones, cared for by a maid.

Arrange with Northern Pacific Railway agents for all reservations connected with Lost Cabin Ranch vacations.



Interior of Main Lodge



Gates of the Mountains



JUN 15 REC'D, 1948
William Schaffner
 LOST CABIN RANCH
 is recommended
 by the
 NORTHERN PACIFIC
 RAILWAY

Old Kaintuck's Ranch

specializes in mountain and ranch life for vacation guests from the East and other sections in the scenic Boulder River country of the Montana Rockies 30 miles south of Big Timber.

It is in a region of rare beauty, with Mt. Contact and the rest of the Absaroka Range towering nearby to 10,000 feet. Great pine forests spread in its immediate vicinity filling the air with their fragrance. Miles of mountain creeks prattle into the Boulder River, which goes under a natural bridge nearby. The ranch produces cattle, saddle horses and hay; and is of course a real ranch.

Trout of the region are superb, big game is plentiful and not far away is the ranger station, where the forest ranger in charge is full of the lore of the great outdoors. Horseback trails thread the surrounding mountains and forests, ever revealing a great extravaganza of mountain scenery.

A colony of comfortable cabins houses guests and the central gathering points are the main ranch house where meals are served and the recreation lodge where letters are written, games played and the floor cleared for dancing whenever a "quorum" of dancers is present. Nickelodeon and piano provide the music. All cabins are modern, with electricity, hot and cold water, showers and toilets and also have the nearby facilities of a central bath house with tub and shower.

Old Kaintuck's Ranch is a member of the Dude Ranchers' Association. It has been the home of Mr. and Mrs. Walter G. Aller and son, Gilman, for twenty years, and is one of the oldest guest and cattle ranches in its locality. Gilman and his wife Elinor, have recently taken over the ranch. They had formerly spent their summers on the ranch and their winters in Washington where Gilman was principal in a high school and Elinor taught in junior high. They are both well-qualified to make your vacation interesting and exciting.

Although the ranch is in the mountain wilds, it is not isolated. Guests come and go, new acquaintances are made, and often the ranch is full to capacity—about 40 guests. The ranch and all its guest quarters are neat and clean as can be. The Allers are good "housekeepers" and ranch operators.

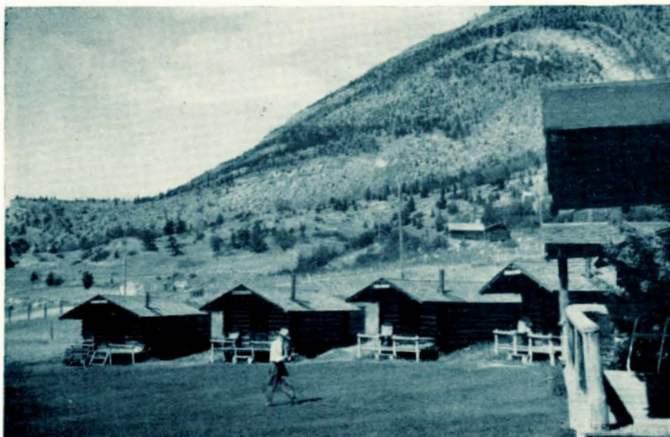
The ranch table is celebrated for its mountain trout and fried chicken and special pride is taken by the Allers in preparing tasty and generous meals, equal to the demands of mountain-whetted appetites. Electric refrigeration is used in the kitchen.



Ranch House and Guest Cabins



Elinor Aller and Her Horse "Rocket"



Guest Cabins face a well-kept lawn



Cozy, Rustic Bedrooms

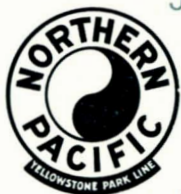


Interior of the Lodge

Riding, trout-fishing, swimming in the Boulder River when weather permits, hiking and hunting in season are among the ranch sports. Guests can readily attend three of the big summer rodeos, at Livingston, Billings and Big Timber, if here at those dates. The guest season is May 20 to October 15. Hunting parties are accommodated in October and November.

Rates are range from \$55 to \$80 per week per person for cabin accommodations and board. Riding horses are available for \$2.00 per half day or may be reserved by the week in the above rates. All reservations must be accompanied by a 10% deposit. Splendid riding country provides choice of valleys, foothills or high mountain trails, all easily accessible from the ranch. It is preferred that guests do not bring their dogs, but if necessary an extra charge of 50 cents per day is made and food for the dog should be brought along. Arrangements for vacations at the ranch maybe made through the Northern Pacific Railway.

To reach the ranch take the North Coast Limited to Big Timber, Montana, where you will be met by appointment. Transportation between railroad station and the ranch is furnished at \$5 for one person, \$7.50 for two, and \$10 for four or five persons, round trip. For a stay of two weeks or longer, no transportation charges are made. When may we expect you?



JUN 15 REC'D, 1948

OLD KAINTEUCK'S RANCH

IS RECOMMENDED

BY THE

NORTHERN PACIFIC RAILWAY

William Scheffner



This Building is for Recreation



General View of the Ranch

Diamond J Ranch In the rugged peaks of the Madison-Gallatin range of the Rocky Mountains, the Diamond J Ranch offers its guests every comfort in modern, rustic, log cabins. Altitude of ranch, 6,000 feet. The ranch is located sixty three miles from Bozeman, Montana and the main line of the Northern Pacific Railway. It is only ten miles from Ennis, a typical old Montana cow town. North of the ranch, rise the majestic Spanish Peaks; on the east, snow-capped Lone Mountain and Jack Creek lakes; on the south, Yellowstone Park, only seventy miles distant by auto; on the west, Madison Lake and Madison River, famous for trout fishing. The Diamond J accommodates thirty guests.

The main building has a beautiful lounge and dining room of rustic log construction, with a large rock fireplace. The lounge has a spacious hardwood floor for dancing, rustic furnishings, game heads and skins; the dining room in connection is furnished with orange and black old hickory; individual tables seat parties of four and six, and the wholesome food is served from a spotlessly clean modern kitchen. A garden supplies fresh vegetables and a dairy herd plenty of cream and butter.

The guest cabins accommodate two or four to each cabin and tent houses in connection offer extra sleeping quarters for children. The cabins are built with the purpose of giving the guests every comfort of home and yet they retain the atmosphere of the Pioneer West. Each cabin offers private bath and shower, dressing room, old hickory furnishings, twin beds with new type



The Little Wrangler
F. 6516—14 2-48



The Lounge at Diamond J

springs and mattresses, woolen blankets, and Indian rugs. The furnishings consist of comfortable chairs, dressing tables and writing desks.

One may rest before the blazing logs of his own fireplace after a refreshing day of riding, fishing, or hiking in the mountains.

Each guest is assigned a private saddle horse from the excellent saddle string. Saddles and equipment are of the finest make and quality. Efficient guides take guests to the many beautiful nearby lakes and mountain streams. The Madison River is said to be Montana's best trout stream.



Recreation in the Open

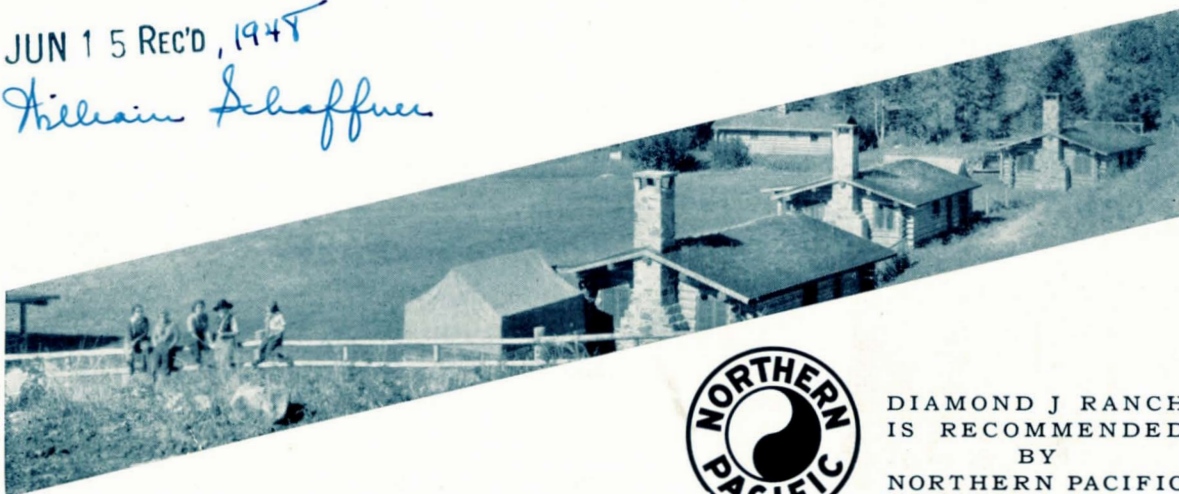
Ranch activities for the guests include riding, fishing, filming of wild game in its natural haunts, attending real wild-west rodeos, cattle drives on the nearby cattle ranches, scenic drives and touring Yellowstone National Park, and participating in picnics and pack-trips.

These activities are conducted by a true daughter of the West, Julia A. Bennett, your hostess, reared on a large Montana cattle ranch. Her parents were among Montana's earliest pioneers, who settled in Virginia City, the historic rendezvous of Vigilantes, road-agents, and gold dust. Mrs. Bennett is assisted in conducting ranch activities by her son-in-law and daughter.

Rates: \$80 to \$95 per week, depending upon accommodations and length of stay; \$125 per week per person for private cabin, single occupancy (no single reservations accepted during month of August). Rates include food, lodging, private saddle horse, transportation to and from railroad, all ranch activities, except special pack trips and private use of ranch cars. The ranch season is from June 15 to November 15.

Make your ranch reservation through the Northern Pacific Railway and take the "North Coast Limited" to Bozeman, Montana, where the ranch car will meet you.

JUN 15 REC'D, 1945
William Schaffner



Cottage Row



DIAMOND J RANCH
IS RECOMMENDED
BY
NORTHERN PACIFIC
RAILWAY