

*New Diesel*  
**POWER FOR THE**  
**NORTH COAST**  
*Limited*



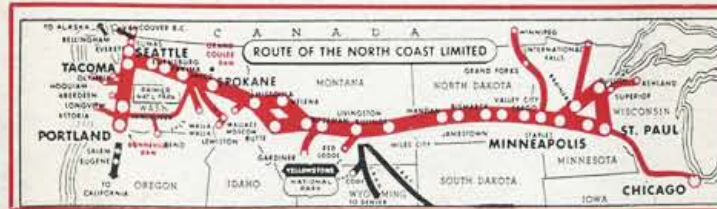
**RELAX ALL THE WAY**

Let Northern Pacific help you plan a vacation this summer in the glorious West. Plan to go by train and enjoy relaxation and comfort from the time you leave home. Our Travel Office is at your service to submit itineraries, tailor-made for you, without obligation. If you wish an Escorted, All-Expense Tour, we have them to Yellowstone National Park, Yellowstone-Glacier, Yellowstone-Colorado, Pacific Northwest-California and Pacific Northwest-Canada. Also cruises to Alaska.

Call at our office, telephone or write

**F. G. SCOTT, General Agent**  
**Northern Pacific Railway**  
 73 E. Jackson Blvd., CHICAGO (4)  
 Telephone Wabash 1271

Northern Pacific's Diesel-powered North Coast Limited glides smoothly through a land of scenic beauty—1408 miles of rivers and 28 mountain ranges are along the transcontinental route. The North Coast Limited's brand-new "Day-Nite" de luxe coaches with chaise lounge seats and full length leg rests, and buffet-lounge cars, expressly for coach passengers, provide the most comfortable low-cost train accommodations available. And late in the summer of 1947, a completely new streamlined North Coast Limited will go in service between Chicago and the North Pacific Coast.



**VACATIONS**  
**IN THE WEST**



*Yellowstone*  
*Dude Ranches*  
*Pacific Northwest*

ROUTE OF THE  
**NORTH COAST**  
*Limited*

**Northern Pacific Railway — Route of the North Coast Limited**

# Yellowstone

Join in the Diamond Jubilee celebration at this greatest of the National Parks. You can leave Chicago on the Burlington-Northern Pacific any day, June 18 to Sept. 7 for Gardiner, Cody or Red Lodge Gateways. Individual or Escorted, All-Expense Tours.



Grand Canyon of The Yellowstone River. Its Lower Falls drops 308 feet, twice the height of Niagara.



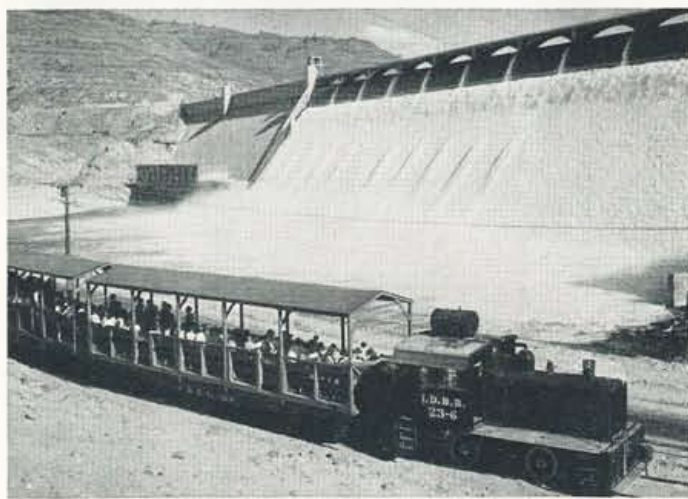
Beartooth Butte and Lake on the spectacular Red Lodge High Road to Yellowstone National Park.

# Dude Ranches

You can "rough it" in luxurious comfort at a Rocky Mountain Dude Ranch. Northern Pacific will help you choose one to your liking and make both your ranch and train reservations, if you wish. Ask for a copy of our "Ranch Vacations" picture booklet.



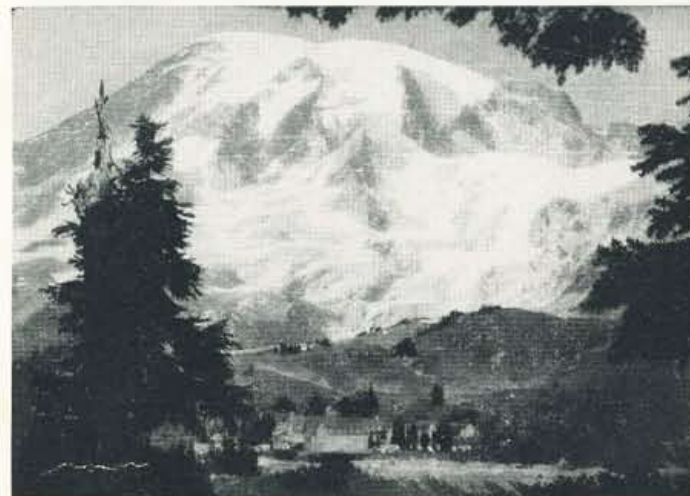
Vacationists get close to scenic grandeur in the Montana-Wyoming Dude Ranch country.



Grand Coulee Dam, Washington. Picture yourself aboard the "Sightseers' Special" at world's largest dam.

# Pacific Northwest

What a menu for Vacationists—Rainier National Park . . . Timberline Lodge . . . Mount Baker . . . Grand Coulee Dam . . . Pacific Coast Beaches and many other points of interest besides the attractive cities of Seattle, Portland, Tacoma and Spokane—and Victoria and Vancouver, B. C. It's North Coast Limited country.



Mount Rainier's eternally snow-crowned peak rises majestically above Paradise Valley to an elevation of 14,408 feet.



From Crown Point on the famed Columbia River Highway near Portland, one may view 40 miles of the mighty river.