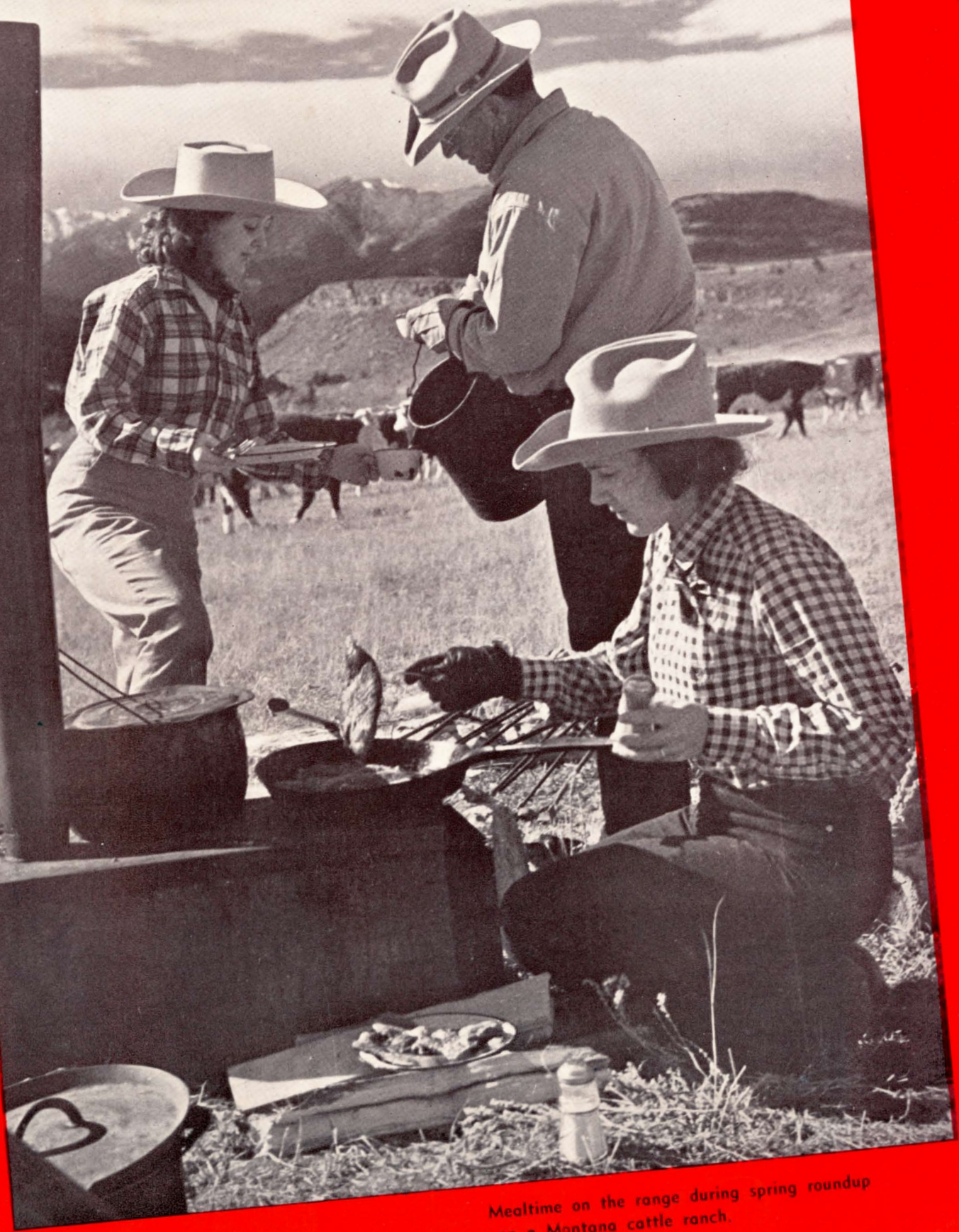


NORTHERN PACIFIC

RANCH VACATIONS





Mealtime on the range during spring roundup
on a Montana cattle ranch.

The Call of the Open Range

DUDE RANCH VACATIONS bear the "Made in America" brand. Demand them and accept no substitute for there is none.

The life of a western Dude Ranch is the natural life of an extensive region that is not duplicated anywhere—a region of picturesque occupation; character, customs, dress and sports developed by that occupation; and of fetching historical traditions dating back to the days of the frontiersmen of the Old West.

Always ranch life has been influenced by the broadness of surrounding plains and the mightiness of towering mountains. Consequently it has fostered a philosophy that is refreshing and re-awakening particularly to the city dweller who has lived constantly among "artificial" things and under conditions created by man.

Aside from its advantages of play and rest, ranch life develops self-reliance, appreciation of beauty, and a knowledge of the real values of the big outdoor world. It stirs and satisfies the desire to explore and grow. So it appeals universally to untried youth, and to the spirit of youth which persists in persons of all ages.

Ranches Hospitable, Friendly

If you have not known this "different vacation," a great experience awaits you. Ranching in Montana, Wyoming, Idaho or Washington will race red blood in your veins, will expand your lungs with keen mountain air, will bring a great clearness and peace to your mind and new health and zest to your body.

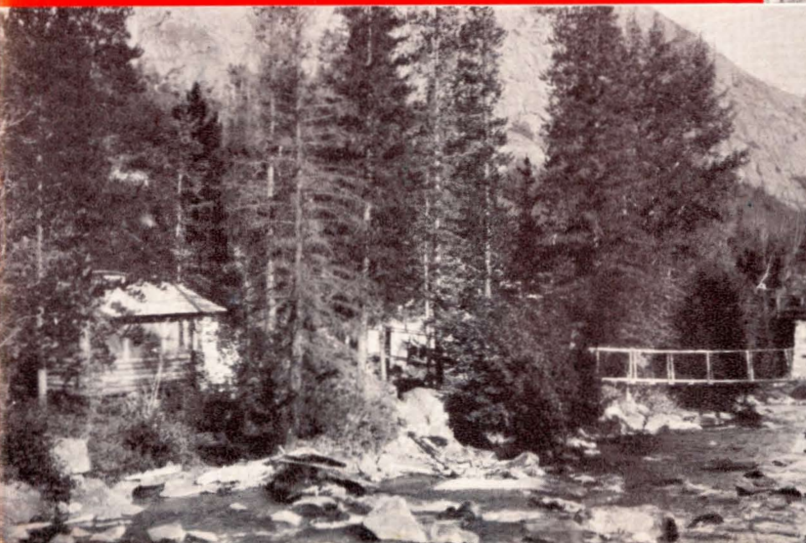
Do you want a change, when vacation time comes? Ranching is as complete a change from city life as one can possibly imagine. Men and women, boys and girls become a part of the ranch immediately upon arrival. They don blue denim overalls, gay-colored shirts and neckerchiefs, boots and cowboy hats, com-

Sighing pine trees and chattering mountain streams intone a peace unknown to cities.

Rustic mountain cabins and lodges hold the charm of the wilderness but with complete modern conveniences.



Individual guest cabins center around the attractive main lodge.

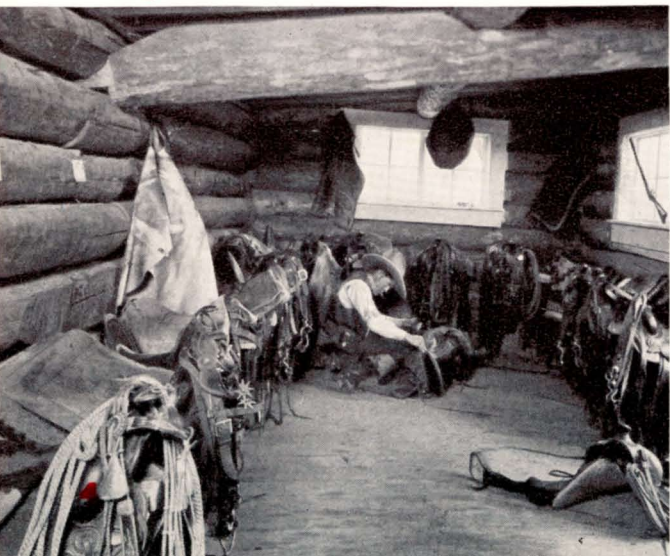




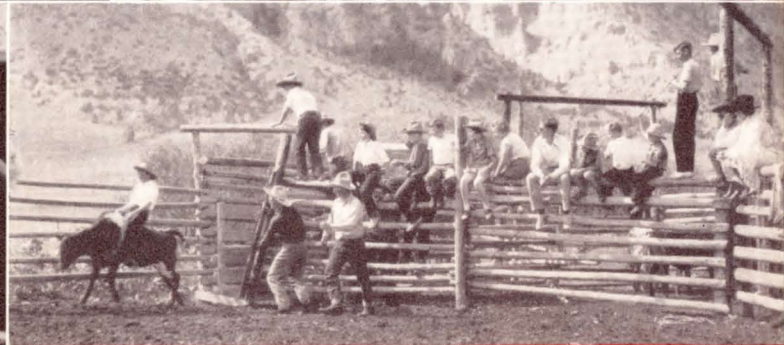
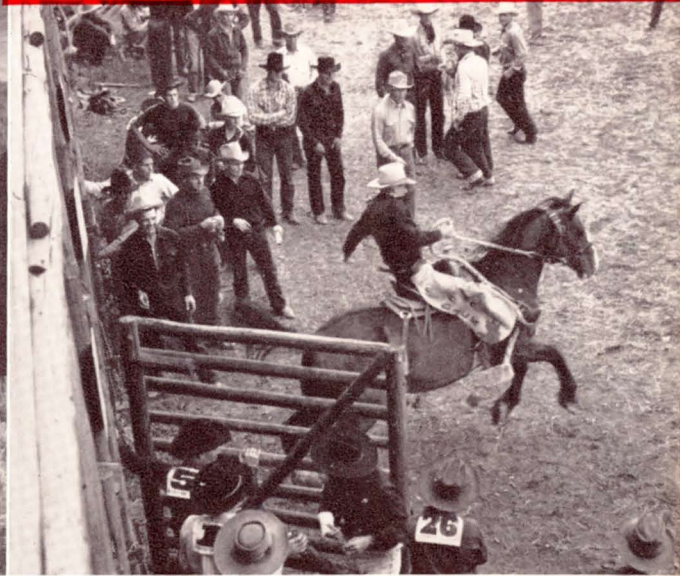
Riding skyline trails with sun and clouds for company tops ranch recreations.



"Oh, give me a home where the buffalo roam—"



A circus for the young! Children and parents join in ranch fun and get acquainted with each other.



Don't be surprised if a new crop of cowboys comes from the East! They're learning out West.

fortable for loafing around the ranch and for horseback riding.

Ranches are hospitable, friendly households, where you will be accepted with warmth and appreciation. People of somewhat similar tastes are attracted to Dude Ranches—they enjoy horseback riding and outdoor sports themselves or they bring children who do.

All come to the ranch to have a good time and they do—they discover a happier, gayer, freer, more interesting vacation than they ever dreamed. The Dude Ranch has an air of camaraderie and good fellowship exactly opposite to the restraint and social aloofness which often settles down upon a fashionable apartment or resort. You let yourself go whether you plan so or not, and you enter into the spirit of the place willingly, joyfully, completely—it is impossible to do otherwise.

Spring, Fall and Year Round

Nowadays the ranch vacation season begins early and ends late. Indeed, a number of ranches are open all year, winter included, and offer winter sports. Flowery Springtime in the Rockies brings out the Dudes and colorful Autumn spired with white peaks causes them to linger.

Attractive discounts are in effect at most ranches during the spring and fall. Accommodations are less crowded. There is more individual attention. Mountain trout fishing is usually at its best. These are some of the

inducements and rewards for those who arrange their ranch vacation for June or earlier and September or later.

Colorful Annual Rodeos

For Western rodeo color and excitement take your Ranch vacation during the rodeo season. Rodeos are annually held at such ranch towns as Livingston, Red Lodge, Miles City, Glendive, Billings, Cody, Sheridan, Butte and others. Rodeo dates are usually announced by April 1 each year and may be obtained from Northern Pacific representatives.

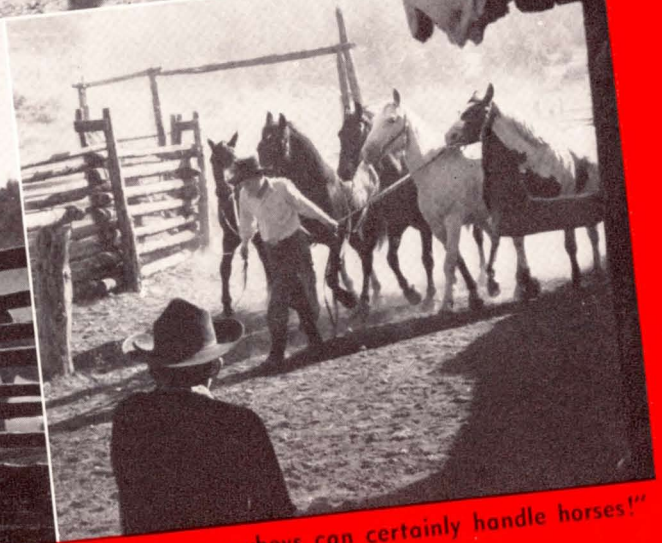
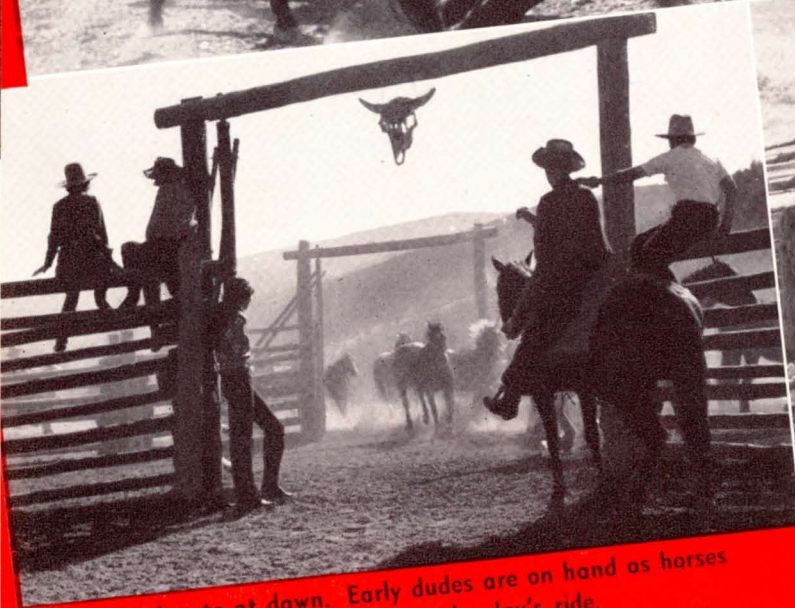
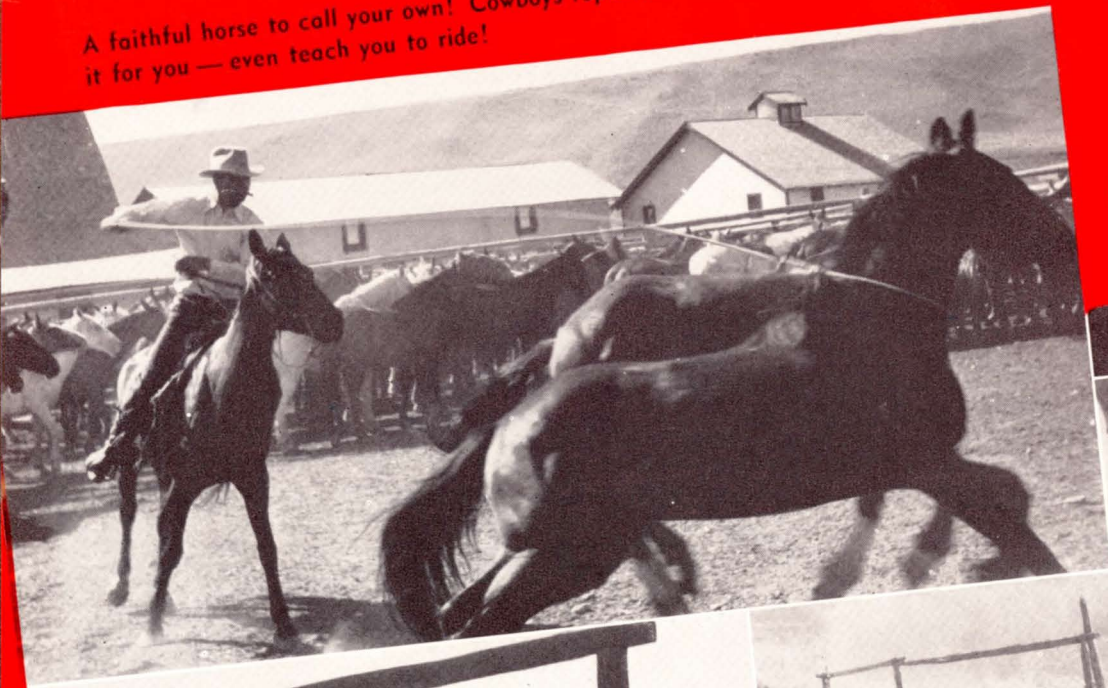
Dude Ranches are of several sorts—cattle ranches, horse ranches, sheep ranches, mountain lodges, mountain camps and ranchified farms. Some places have both cattle and sheep but all have horses and go in for horseback riding in a large way.

Some ranches are chiefly patronized by congenial crowds of young married people; others have groups of young men and women of college age; at others, boys and girls from eastern prep schools predominate; some ranches chiefly attract families—parents with children. Some have specific sectional, state or city clienteles.

How To Select a Ranch

To find just the ranch to suit your individual taste, consult the Northern Pacific. If you can call at any of

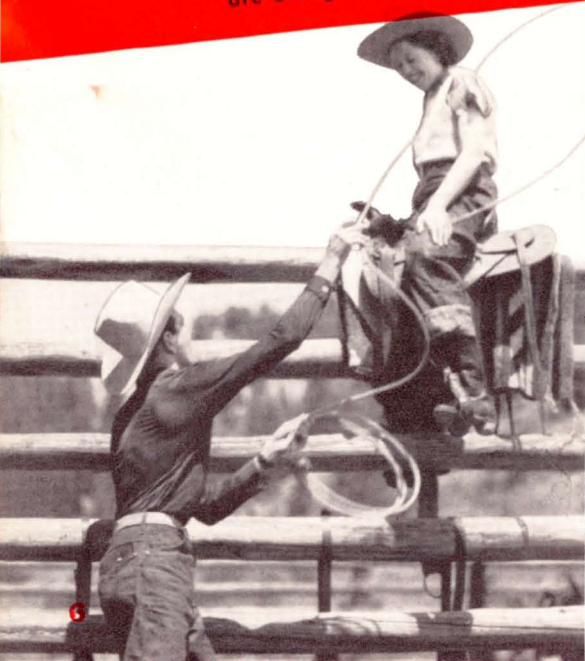
A faithful horse to call your own! Cowboys rope and saddle it for you — even teach you to ride!



Corral gate at dawn. Early dudes are on hand as horses are brought in for the day's ride.

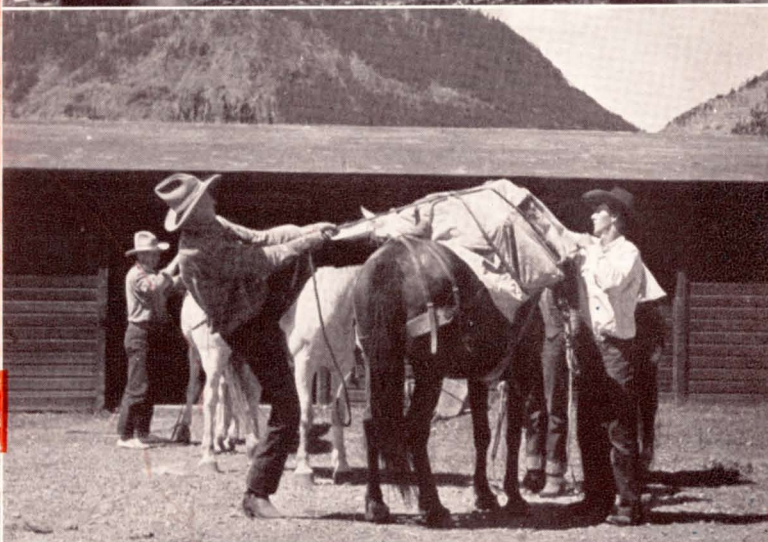
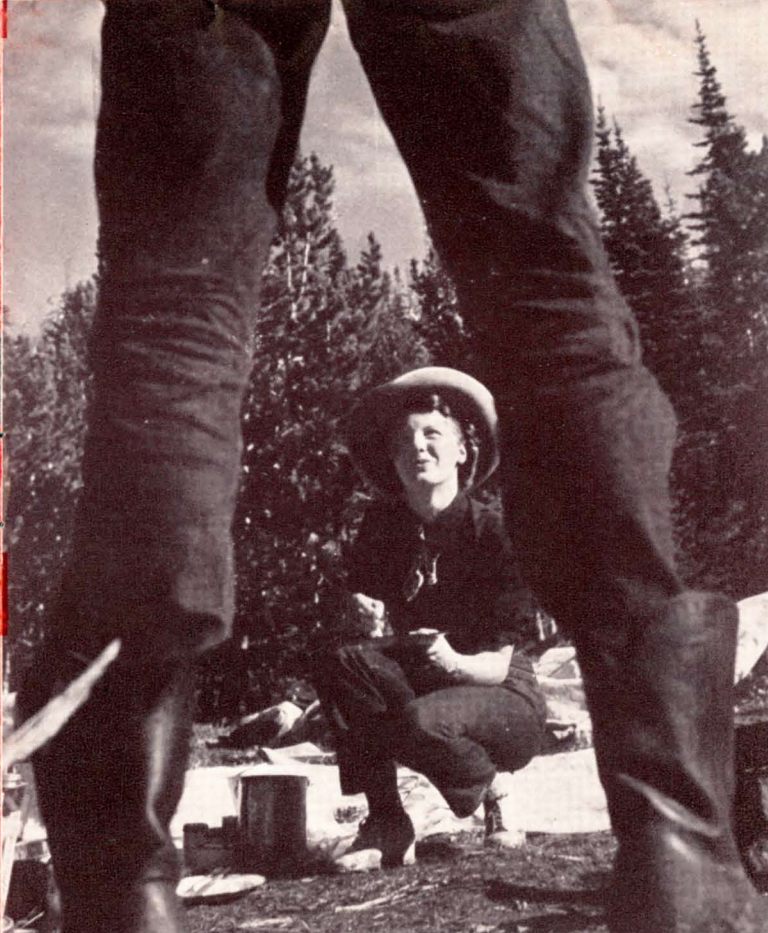
"Say, these cowboys can certainly handle horses!"

"Howdy, stranger," is the greeting of the range when dude meets dude.



Give a cowboy ora dude enough rope — and he's soon doing tricks.





the offices listed on page 15, you will find it helpful. These offices have "literature" about individual ranches; our larger offices have albums containing authentic photographs of scores of ranches—interiors, exteriors, main buildings, guest rooms, cottages, bathrooms, scenic surroundings; they even have pictures of ranch bosses and their wives, many of whom are known personally to men in the Northern Pacific offices. You can get exact dependable information from the Northern Pacific when choosing a Dude Ranch and can be quite certain about everything before you start.

It is of great importance to the Northern Pacific to place ranch guests where they will be enthusiastically satisfied; therefore we take the greatest pains toward that end.

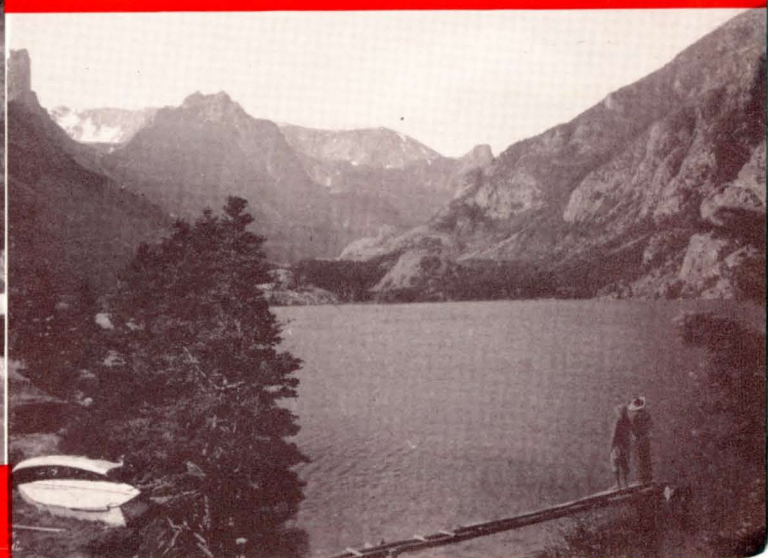
Some Points to Consider

In correspondence, the following information will help us to give you the best attention: Name and address? Number going in your family or party? If children are included, give ages. Kind of accommodations—with or without private bath? Do you prefer a mountain lodge, a livestock ranch or what? Do you prefer "open" foothills country or mountain trail riding? Do you choose a lively, active, busy ranch life, an easy going moderate pace, or downright slow and peaceful? Do you want a remote place in the wilderness? Would you be happiest at a ranch having a very small family of guests (8 to 20), one of middle size (20 to 40) or a large ranch (40 to 100)? Indicate about what sum you wish to invest in your vacation, or what weekly rate appeals to you as fair. What are the probable dates of your trip?

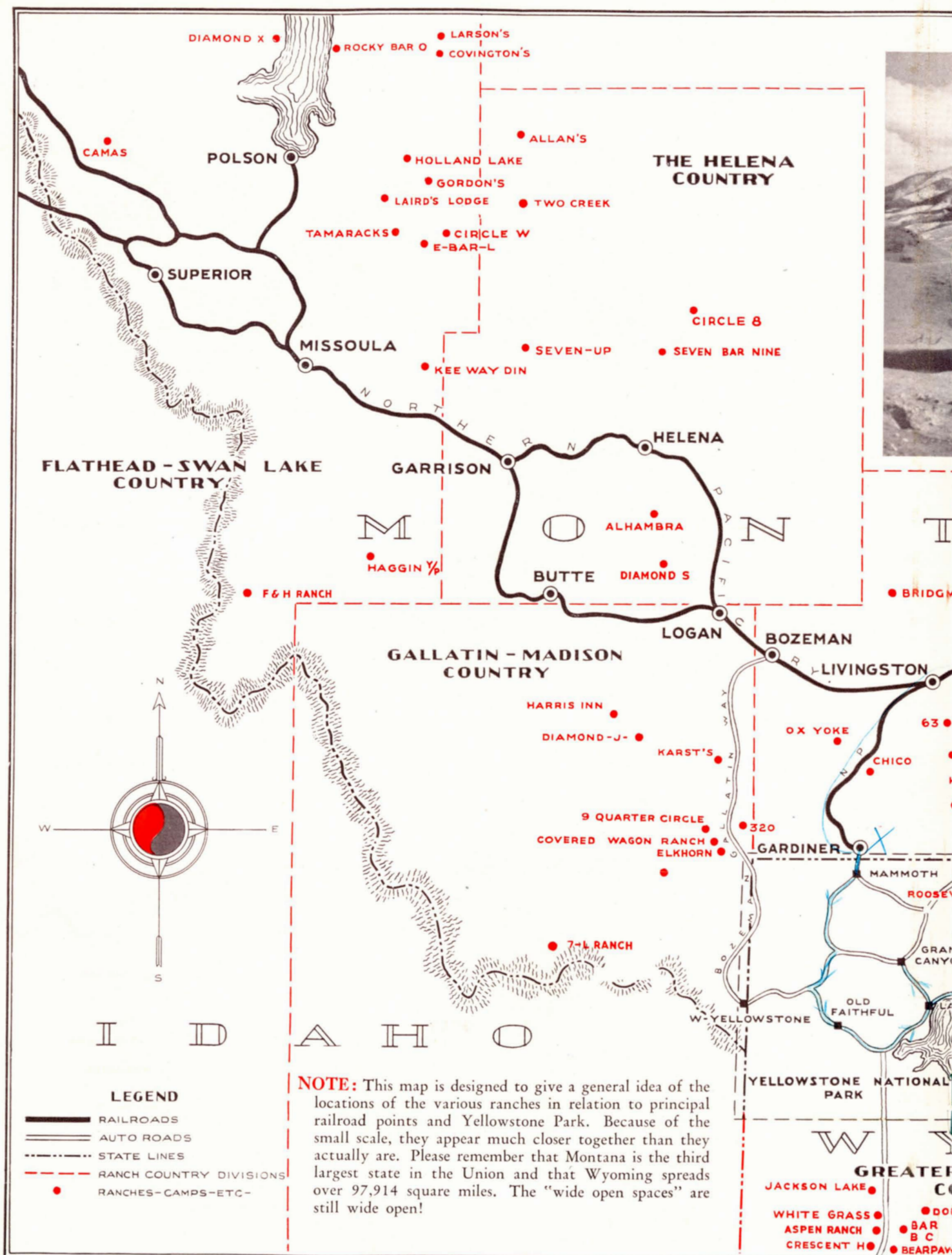
If inconvenient for you to call at one of our offices, address a letter to your nearest Northern Pacific agency (see page 15 for addresses) or write:

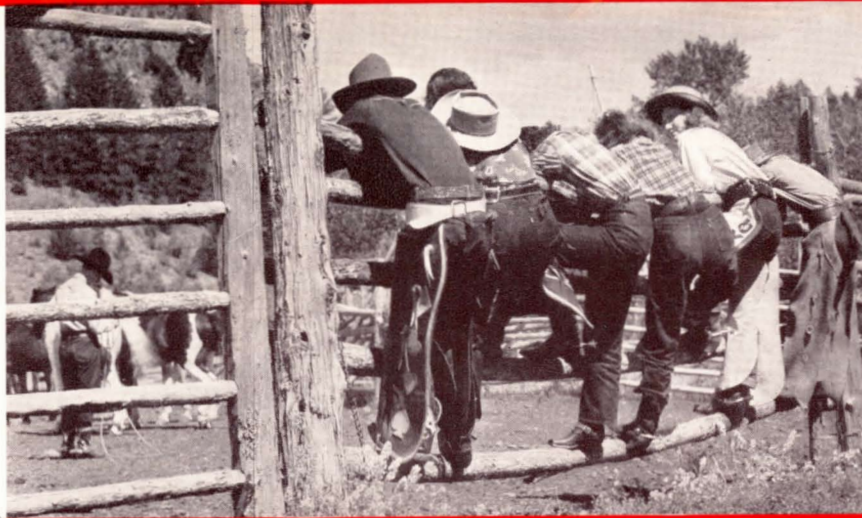
E. E. NELSON, *Passenger Traffic Manager*
Northern Pacific Railway, ST. PAUL, 1, MINN.

For scenic beauty and fishing, lakes high in the Rockies are Tops.

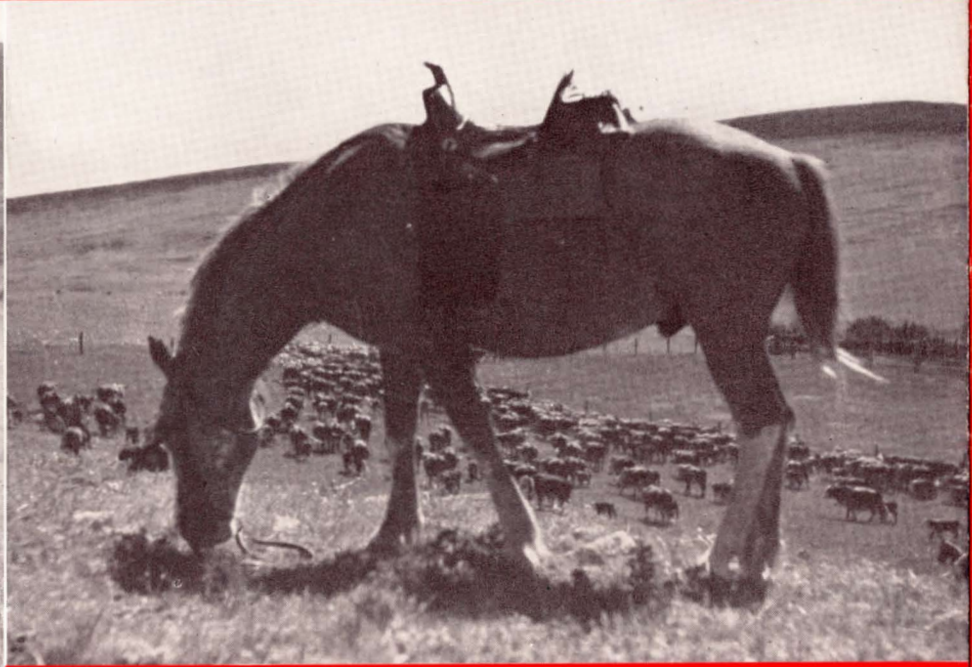


On camping expeditions in big game country, pack horses carry provisions and equipment where roads and bridges are unknown.

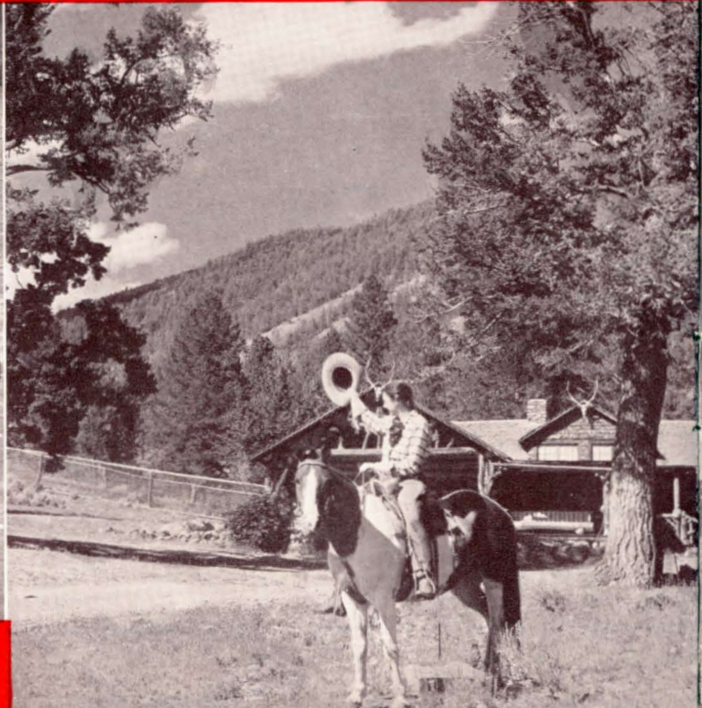




Center of attention is the corral arena, scene of saddling, roping and riding.



Romance of ranch work — lowing cattle on the trail and a guardian horse on the hill.



Questions?

Some of the more common questions that have been raised about "ranching" are answered here. If you have others, please feel free to communicate. You will receive prompt reply.

What clothes should I bring to the ranch?

We recommend the following as essential—two pairs blue denim waist-high overalls, a strong leather belt, boots any style but 12-inch cowboy preferred, a half dozen pairs of cotton socks and two pairs wool, a half dozen shirts of any color—the gayer the better, one woolen shirt, ordinary summer underwear (avoid buttons in back), one cowboy hat, ordinary pajamas, one lightweight and one medium-heavy sweater, one leather or wool jacket, plenty of handkerchiefs with a few bright ones included, a pair of stout leather gloves, a slicker, a pair of walking shoes, a sport outfit or so, both for traveling and for ranch wear evenings. In addition, the following are useful, but not necessary—riding habit, spurs, a leather vest, chaps. Dude Ranch clothes are carried by sporting goods stores, large department stores and specialty shops; also they may be purchased out West on arrival—even the smallest western trading centers sell authentic and dependable western merchandise such as cowboy hats and boots, leather goods, shirts, neckerchiefs, slickers, overalls, belts, etc. Jodhpurs are suitable for girls and women, but not for men. Men mostly wear blue jeans, waist length, or riding breeches. Ladies also wear divided leather or gabardine skirts.

What other equipment would be useful?

A camera and film (you can buy film in all sizes at or near each ranch). A movie camera and film. Trout fishing outfit, if you want to go in for that. A swimming suit. A fountain pen, a topcoat, smokes, flashlight and field glasses. One-half pint of "Caron oil" to make suntanning painless and easy. A stick of camphorated ice to avoid chap on lips caused by dry air. One pair heavy pajamas. A pair of tennis shoes.

Do ranches "go in" for dancing?

Yes, many an evening at the main ranch house or recreation hall. Also guests frequently go to cowboy dances at neighboring ranches or towns. You'll find dancing in cowboy boots quite possible with a bit of practice; or, your sport outfit will come in handy for parties. Dark shoes recommended, certainly not white ones. Some ranches have orchestras; nearly all use radios and phonograph records on occasion.

Pack saddle inspection precedes the camping trip.



Do dudes ever go in for calf branding!

Are Dude Ranches alike or standardized?

No two Dude Ranches are exactly similar. Each has its own personality, its own attractions. On page 14 the ranches are listed and we have attempted to classify them.

Do you want to gallop after cattle, rope calves and help cowboys with the roundup? Then choose a cattle ranch for your vacation.

Perhaps you wish a horse ranch, where fine animals are raised and trained.

Or, do you prefer a place without livestock—just pleasant cabins in the mountains, restful veranda chairs; horses when you want to ride the trails, or go on a camping trip? If so, pick a mountain lodge type of Dude Ranch.

Then there are sheep ranches, where guests help to drive the "woolies" over continental divides to summer range. And there are fishing camps and hot springs resorts. All have their place and extend warm hospitality to their house guests.

How much does a ranch vacation really cost?

You can find a ranch to suit your purse. Is \$45 a week all-inclusive price satisfactory? Or would you prefer a place charging \$60, \$70 or more a week? Most ranches offer special rates for families, for persons staying all summer, or the year around. Decide about what you wish to pay. The Northern Pacific will gladly advise with you and recommend several suitable places within the price you designate.

Do ranches charge extra for saddle horses?

No, generally speaking. Just a few of the lodges and hot springs places having very low weekly rates do assess an extra charge for horses on days when used. However, 95% of the Dude Ranches furnish horses at all times without extra charge—they include horses and all living expenses and activities within the weekly or monthly rate.

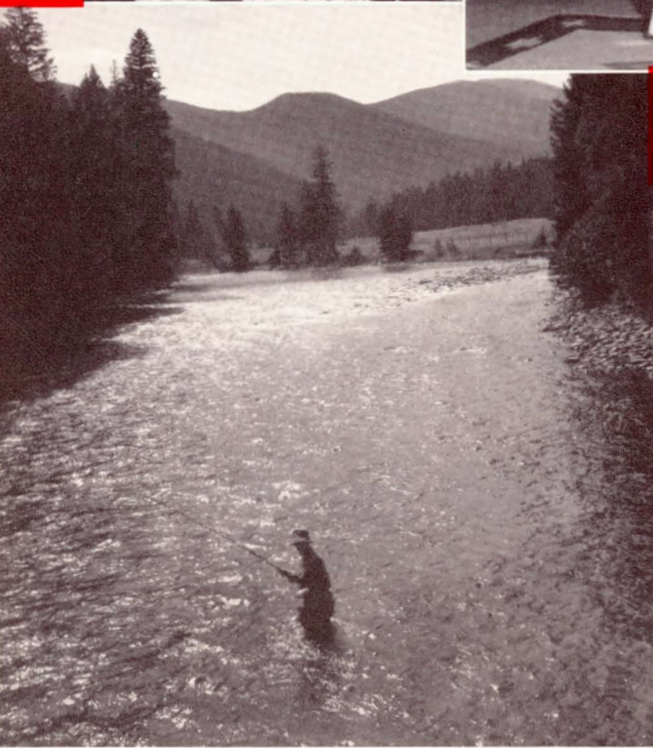
Can I bring my own saddle and bridle?

Yes, if you wish to do so, although every ranch furnishes saddles and full equipment for all guests.

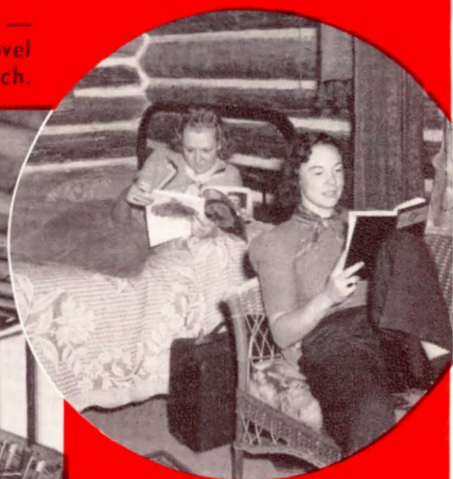
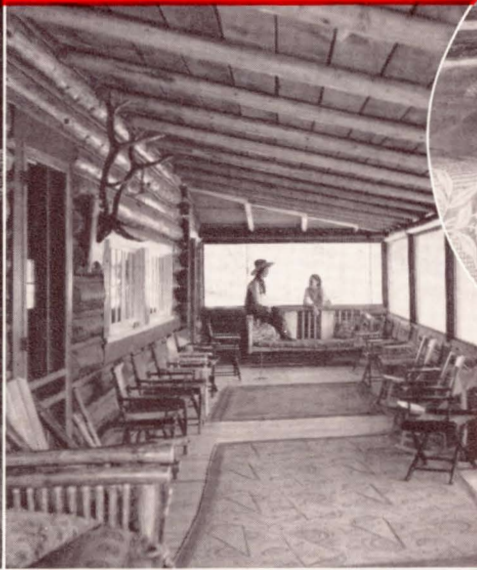
How much does it cost to fish?

Non-resident license in Wyoming, season \$3.00, 7-day \$1.50; Montana, season \$10.00, 3-day \$2.50; Idaho, sea-





Upper left—Real mountain music —
"Come and get it!" Above—A novel
"dining corral" at a typical ranch.

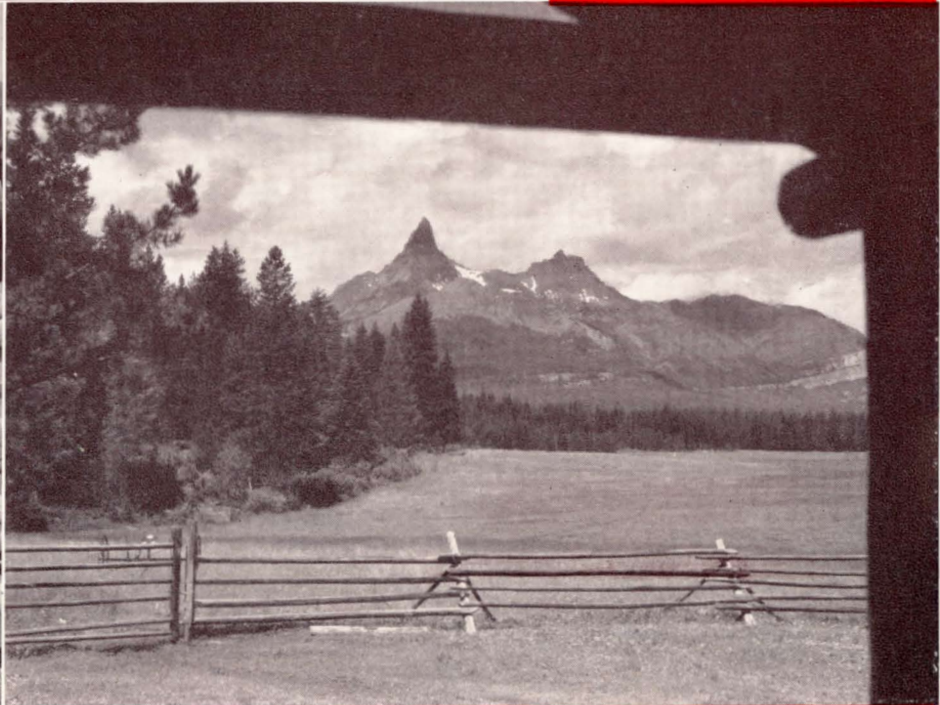


Cozy cabins and mountain air
encourage rest and reading.

Extreme left—For many, moun-
tain trout fishing is king
of ranch sports.



Learning cowboy lingo proves fun for these
dudines.



Outlook from a typical ranch — spired mountains, vast forests,
green meadows.

son \$5.00, 10-day \$2.00; Washington, state \$5.00, county \$3.00. In Yellowstone Park, no license required.

I have three children, 10, 13 and 16. Will you recommend a ranch where there are other children for them to play with?

There are several ranches which are, indeed, "children's heaven," where the hosts and hostesses specialize in providing good times and busy programs for young folks and where there are always families of children as guests. The Northern Pacific will gladly recommend several such ranches for your choice.

Will we have time to read?

Yes, indeed. Bring some good books of your own. You'll find others in the ranch library. Other guests will trade reading matter with you. Nearly everyone, young and old, likes periods of relaxation, easy chairs, good books and some solitude in their own cottages, on the main ranch veranda or in a quiet spot in the woods.

Can I find a ranch back in the mountains where I can get away from autos, gasoline and all that? I want a change. I want to really rest.

Dude Ranches prefer that their guests leave their cars at home and forget them. The ranch car will meet you at the station, you'll be taken deep into the wilderness and seldom see, hear or smell a motorcar. A ranch is a real change from city traffic.

How long does it take to get to the ranch country from Chicago?

Only one business day—leave Chicago at night, then one day en route and the next morning you're in the mountains.

Are there ranches having guests of high school and college age, properly chaperoned?

Several ranches have parties of girls and boys, usually with teachers or counselors in charge, or parents. Most of the ranches have families with young people as guests.

What about food?

Ranches, as a whole, serve bountiful meals and have a surprising variety—beef, mutton, pork, chicken, ducks, turkeys, and trout being the various meat dishes. Most ranches have gardens and green vegetables are regularly on the menu. Dairy products are of the best, every ranch having plenty of rich cream, milk and butter. Fruits are shipped in fresh and canned.



Trout Fishing

Many ranches have superb mountain trout fishing. A number of fishing camps which center on this sport will be suggested on request.

Hunting

Big game stalking and camera-hunting is always in season, of course, and requires no license. But should you desire to indulge in the rare adventure of big game shooting, we shall be glad to recommend a ranch where bear, deer, elk, wolf, cougar and other animals are to be found. Spring bear hunting in May and June is an annual sport at several ranches. Predatory animals may be bagged at any time. Game animals, including bear, are hunted in specific periods in the fall. Recommended guides, dependable and experienced, guides with the best of records in game-getting, are known to the Northern Pacific. Write E. E. Nelson, 914 Northern Pacific Bldg., St. Paul, for detailed information, or call at any Northern Pacific office.

Escape the Heat!

Mountain ranch guests completely escape the relentless hot waves which scourge dwellers in other parts of the country! Summer nights are fully "air-conditioned" by neighboring peaks even in July and August. Most of the time you will sleep under not one blanket but two—and how you will sleep!





Dude Ranches Served by the Northern Pacific

Name of Outfit and Kind of Place	Nearest Railroad Station	Rates for Summer Per Week	Post Office
Absaroka Lodge.....BC (H)	Cody, Wyo.....	Season, \$400	Wapiti, Wyo.
★ Allan.....MR (H)	Helena, Mont.....	\$65-75	Augusta, Mont.
★ A 2 Z.....MR (H)	Cody, Wyo.....	63-80	Valley, Wyo.
★ Bar B C.....MR (H)	Gardiner, Mont.....	63-77	Moose, Wyo.
Bar Double R.....MR (H)	Gardiner, Mont.....	85.00	Kelly, Wyo.
★ Bar T. A.....MR (H)	Big Timber, Mont.....	Day, 7.00	McLeod, Mont.
★ Bearpaw.....MR (H)	Gardiner, Mont.....	Day, 15-17	Jackson, Wyo.
★ Beartooth.....MR (H)	Columbus, Mont.....	55-65	Nye, Mont.
★ Beartooth Lake Lodge.....Y (H)	Red Lodge, Mont.....	50-60	Red Lodge, Mont.
★ B 4.....MR (H)	Red Lodge, Mont.....	65-75	Cooke, Mont.
★ Bones Brothers.....OR (CH)	Forsythe, Mont.....	60-75	Birney, Mont.
Bow & Arrow.....MR (H)	Livingston, Mont.....	50-60	Pray, Mont.
Brannin.....OR (CH)	Big Timber, Mont.....	50.00	Melville, Mont.
★ Bridgman.....OR (CH)	Livingston, Mont.....	45.00	Clyde Park, Mont.
★ Burnt Leather.....OR (CH)	Livingston, Mont.....	45-55	McLeod, Mont.
★ C M.....MR (H)	Bonneville, Wyo.....	60-75	Dubois, Wyo.
★ Camp Sawtooth.....L (H)	Red Lodge, Mont.....	60.00	Red Lodge, Mont.
Chico Hot Springs.....Y (H)	Emigrant, Mont.....	24-30	Emigrant, Mont.
★ Circle 8.....L (H)	Helena, Mont.....	60.00	Choteau, Mont.
Circle H.....OR (CH)	Cody, Wyo.....	75.00	Wapiti, Wyo.
Circle W.....OR (H)	Missoula, Mont.....	42-65	Ovando, Mont.
Covered Wagon.....L (H)	Bozeman, Mont.....	60.00	Gallatin Gateway, Mont.
Dead Indian.....MR (H)	Cody, Wyo.....	55-65	Painter, Wyo.
★ Dewey Riddle.....OR (CH)	Cody, Wyo.....	75-80	Cody, Wyo.
★ Diamond G.....MR (H)	Gardiner, Mont.....	75-85	Dubois, Wyo.
★ Diamond J.....MR (CH)	Bozeman, Mont.....	80-95	Ennis, Mont.
Diamond S.....Y (H)	Whitehall, Mont.....	35-70	Boulder, Mont.
Diamond X.....OR (CH)	Polson, Mont.....	75.00	Rollins, Mont.
★ Dot S Dot.....OR (CH)	Big Timber, Mont.....	55-75	Melville, Mont.
★ Double Dee.....OR (CH)	Cody, Wyo.....	85.00	Meeteese, Wyo.
★ Double Diamond.....OR (H)	Gardiner, Mont.....	56-70	Moose, Wyo.
Double K.....MR (H)	Yakima, Wash.....	75.00	Yakima, Wash.
★ E Bar L.....OR (H)	Missoula, Mont.....	75.00	Greenough, Mont.
★ Eatons.....OR (CH)	Sheridan, Wyo.....	75.00	Wolf, Wyo.
★ Elephant Head.....MR (H)	Cody, Wyo.....	60-70	Wapiti, Wyo.
★ Elkhorn.....OR (H)	Bozeman, Mont.....	65-85	Ennis, Mont.
★ F and H.....OR (CH)	Missoula, Mont.....	70.00	Darby, Mont.
F J Bar.....MR (H)	Cody, Wyoming.....	50-60	Painter, Wyo.
Flaming Arrow.....MR (H)	Bozeman, Mont.....	60-65	Bozeman, Mont.
★ Gallogly Hot Springs.....Y	Darby, Mont.....	Day, 5.50-8.00	Darby, Mont.
Gordon.....OR (CH)	Missoula, Mont.....	75.00	Seeley Lake, Mont.
★ H F Bar.....OR (CH)	Sheridan, Wyo.....	65-85	Saddlestring, Wyo.
Haggin.....MR (H)	Drummond, Mont.....	65-75	Anaconda, Mont.
Hebgen Lake Lodge.....F	Bozeman, Mont.....	35-60	West Yellowstone, Mont.
Holland Lake Lodge.....L (H)	Missoula, Mont.....	65.00	Seeley Lake, Mont.
★ Holm Lodge.....L (H)	Cody, Wyo.....	50-65	Cody, Wyo.

Name of Outfit and Kind of Place	Nearest Railroad Station	Rates for Summer Per Week	Post Office
I X L.....OR (CH)	Ranchester, Wyo.....	50-74.50	Dayton, Wyo.
Karst.....Y (H)	Bozeman, Mont.....	35.00	Gallatin Gateway, Mont.
★ Klondike.....OR (CH)	Sheridan, Wyo.....	45.50-49	Buffalo, Wyo.
★ Laird's Lodge.....L (H)	Missoula, Mont.....	75.00	Seeley Lake, Mont.
★ Lazy Bar F.....MR (H)	Cody, Wyo.....	65-75	Valley, Wyo.
★ Lazy F.....OR (CH)	Ellensburg, Wash.....	55-75	Ellensburg, Wash.
★ Lazy K Bar.....OR (CHS)	Big Timber, Mont.....	65-90	Big Timber, Mont.
★ Lazy 6 V.....OR (CH)	Cody, Wyo.....	60-70	Cody, Wyo.
Lost Cabin.....OR (CH)	Avon, Montana.....	55-85	Avon, Montana
★ Methow Valley.....OR (CH)	Spokane, Wash.....	65-80	Winthrop, Wash.
Mill Creek.....MR (H)	Livingston, Mont.....	65-75	Livingston, Mont.
★ Moose Head.....OR (CH)	Gardiner, Mont.....	65-75	Elk, Wyo.
★ Nine Quarter Circle.....OR (H)	Bozeman, Mont.....	60-80	Gallatin Gateway, Mont
★ Old Kaintuck's.....L (H)	Big Timber, Mont.....	40.00	McLeod, Mont.
★ Ox Yoke.....OR (CH)	Emigrant, Mont.....	70.00	Emigrant, Mont.
★ Parade Rest.....MR (H)	Bozeman, Mont.....	70-95	West Yellowstone, Mont.
★ Paton.....OR (H)	Greybull, Wyo.....	65.00	Shell, Wyo.
★ Pitchfork Bar.....OR (CHS)	Cody, Wyo.....	70-80	Pitchfork, Wyo.
★ P Lazy B.....OR (CH)	Columbus, Mont.....	60-75	Beehive, Mont.
★ Ranger Creek.....MR (H)	Greybull, Wyo.....	50-62.50	Greybull, Wyo.
Richel Lodge.....L (H)	Red Lodge, Mont.....	45-55	Red Lodge, Mont.
★ Rocky Bar O.....MR (H)	Missoula, Mont.....	65.00	Big Fork, Mont.
Seven Bar Nine.....OR (CH)	Helena, Mont.....	60-70	Cascade, Mont.
Seven Up.....OR (H)	Helena, Mont.....	70-85	Lincoln, Mont.
★ Sixty Three.....MR (H)	Livingston, Mont.....	55-65	Livingston, Mont.
Snowy Range.....MR (H)	Livingston, Mont.....	55-75	Livingston, Mont.
Staples.....L (H)	Sheridan, Wyo.....	45.00	Story, Wyo.
★ Sunlight.....OR (CH)	Cody, Wyo.....	84-91	Cody, Wyo.
★ T Cross.....MR (CH)	Bonneville, Wyo.....	70-80	Dubois, Wyo.
★ Teepee Lodge.....OR (CHS)	Sheridan, Wyo.....	75.00	Bighorn, Wyo.
★ The Tamaracks.....MR (H)	Missoula, Mont.....	60-80	Seeley Lake, Mont.
★ T O Bar.....OR (CH)	Red Lodge, Mont.....	45-55	Roscoe, Mont.
320.....OR (H)	Bozeman, Mont.....	35-55	Gallatin Gateway, Mont.
Triangle X.....OR (CH)	Gardiner, Mont.....	65-90	Grosvont, Wyo.
★ Valley.....OR (H)	Cody, Wyo.....	66-100	Valley, Wyo.
★ White Grass.....MR (H)	Gardiner, Mont.....	80.00	Moose, Wyo.
X Bar A.....OR (C)	Big Timber, Mont.....	50.00	McLeod, Mont.

SYMBOLS

OR—Operating and producing ranches.
MR—Mountain Ranch.
L—Lodges and Mountain Camps

F—Fishing Camps and Lake Resorts.
Y—Mountain Lodge for transient tourists.
C—Cattle on Ranch.

H—Horses on Ranch.
S—Sheep on Ranch.
CH—Cattle and Horses.

HS—Horses and Sheep.
CS—Cattle and Sheep.
BC—Boys' Camp—by season only.

★—Member of Dude Ranchers' Association.



"SMOOTH SAILING"—A fleet of six giant 4500-horsepower Diesel locomotives power the North Coast Limited smoothly across the Northwest.

Travel to the Ranch Country on the NORTH COAST LIMITED

For Your Convenience

Northern Pacific offices are located in most large cities. You are invited to make them your travel headquarters.

BOSTON Rm. 8, Little Bldg., 80 Boylston St.
BUFFALO - - - - - 794 Ellicott Square
CHICAGO - - - - - 73 E. Jackson Blvd.
CINCINNATI - - - - - 615 Gwynne Bldg.
CLEVELAND - - - - - 1334 Terminal Tower
DALLAS - - - - - 901 S. W. Life Bldg.
DENVER - - - - - 316 Ry. Exchange Bldg.
DETROIT - - - - - 808 Lafayette Bldg.
DULUTH - - - - - Room 111, Union Station
KANSAS CITY - - - - - Room 206, 1025 Grand Ave.
LOS ANGELES - - - - - 519 Associated Realty Bldg.
MILWAUKEE - - - - - 913 Majestic Bldg.
MINNEAPOLIS - - - - - 701 Marquette Ave.
NEW YORK CITY - - - - - 560 Fifth Ave.
OAKLAND - - - - - 815 Central Bank Bldg.
PHILADELPHIA 926 Fidelity-Phila. Trust Bldg.
PITTSBURGH - - - - - 608 Park Bldg.
PORTLAND, ORE. - - - - - 707 American Bank Bldg.
ST. LOUIS - - - - - 601 Boatmen's Bank Bldg.
ST. PAUL - - - - - 333 Robert St.
SAN FRANCISCO - - - - - 657 Market St.
SEATTLE - - - - - 416 Smith Tower
SPOKANE - - - - - 701 Sprague Ave.
TACOMA - - - - - 118 South Ninth St.
TORONTO, ONT. - - - - - Room C-29, Union Station
WASHINGTON, D. C. - - - - - 500 Shoreham Bldg.

Please check over the list of places on the preceding page, then ask the Northern Pacific for full details about any one of them. Separate leaflets are available on many individual "outfits" to help you find exactly the kind of place you prefer.



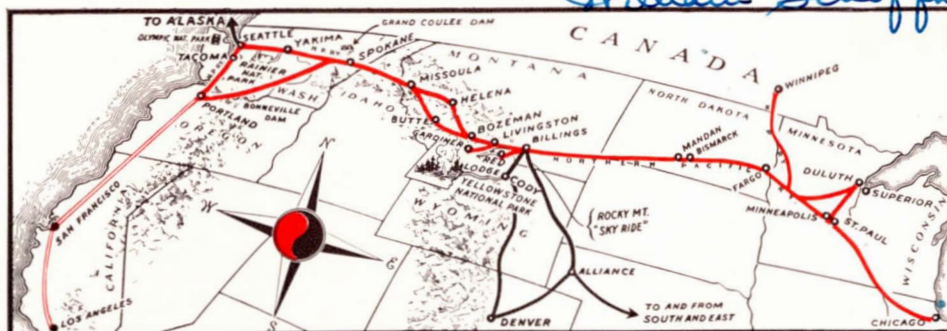
NORTHERN Pacific's premier transcontinental train has come to be known as the "Dude Ranchers' Train" because so many ranchers and guests travel N. P. Vacationers hail the trip on the North Coast Limited as a restful prelude to ranch activity and adventure. Sociability, plenty of room to move about and delicious meals are among the pleasures which make it their favorite train and they usually meet both ranchers and dudes while traveling on the N. P.

Remember the "Great Big" Baked Potato? It's back on the menu after a wartime absence.

Northern Pacific is a particularly convenient route for many ranch travelers because it serves, with through Pullmans from Chicago, the principal Yellowstone Park gateways, which also are leading Dude Ranch destinations.

Ask your Northern Pacific representative to help with your ranch vacation plans and make your train reservations on the North Coast Limited.

JUN 15 REC'D, 1945
William Schaffner



Route of the

NORTH COAST LIMITED

IN THE NORTHWEST ROCKIES AND CASCADES

RANCH VACATIONS

