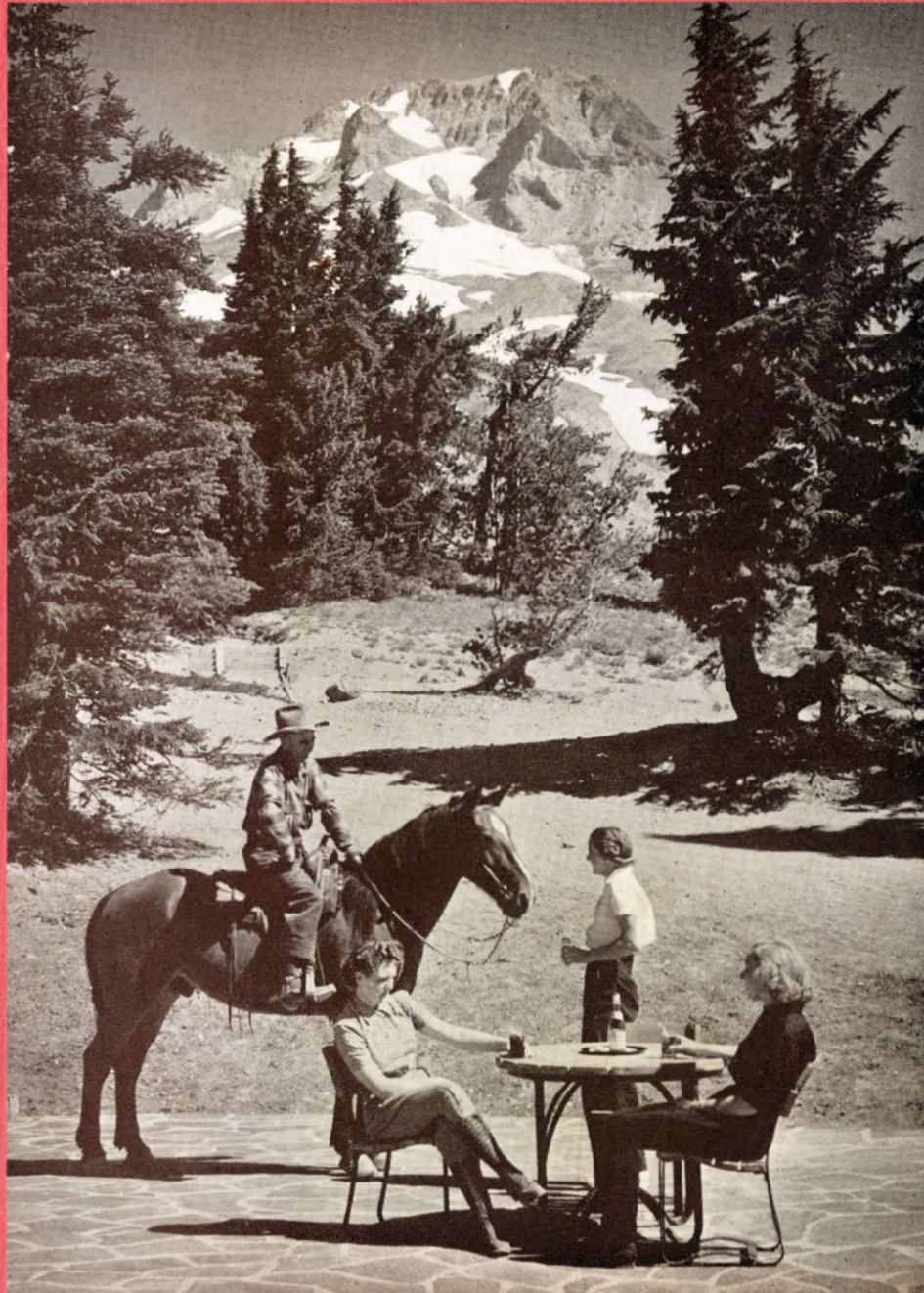


Sat July 25-42 ^{near Spokane}
 Carrington to Glacier ^{alone}
 Return from Deer Creek ^{J.C. Surg.}



ON TIMBERLINE LODGE PLAZA,
 MOUNT HOOD, OREGON



NORTH COAST LIMITED

DINNER

\$1.50

Crisp Celery
Chilled Tomato Juice
Ripe Olives
Chicken Soup with Noodles
Broiled Jumbo Whitefish
Anchovy Butter
Roast Prime Ribs of Beef
Au Jus
Broiled Lamb Chops
Hawaiian
Broiled Fresh Mushrooms
On Toast
Omelet
With Strawberries
N. P. BIG BAKED POTATO
Cauliflower
Drawn Butter
Hot Tea Biscuits
Salad Macedoine
Russian Dressing
Strawberry Mary Ann
Whipped Cream
Ice Cream and Cake
Chilled Melon
Blue Cheese, Crackers
Coffee

Casserole Dinner

90c

Roast Prime Ribs of Beef, N. P. Big Baked Potato, Green Beans, Tea Biscuits,
Coffee, Tea or Milk. Any Dessert selected from Menu above.
(Fish or Eggs will be substituted for Roast Beef, upon request.)

Plate Dinner

65c

The Steward will suggest several items from which selection may be made. This meal includes meat or fish, potatoes, vegetable, bread and butter, coffee, tea or milk.

We desire to serve you in such a manner that you will travel again on the Northern Pacific Railway and recommend our line to your friends.

SUGGESTIONS AS TO HOW WE MAY SERVE YOU BETTER ARE INVITED

A. W. THOMSON, Superintendent Dining Cars

NORTHERN
SAINT PAUL

A LA CARTE

RELISHES

Chilled Tomato Juice .15	Ripe Olives .25	Crab Cocktail .45
Washington Apple Juice .15	Melon Mangoes .25	
Caviar on Toast .65		

SOUPS

Green Turtle .25	Cream of Tomato .25	Chicken with Noodles .25
Clam Bouillon, cup .20		Consomme, cup .20

FISH

Broiled Whitefish .60	Fillet of Lake Pike, Tartar Sauce .60
Broiled Sardines on Toast .60	Shrimp Newburg .60

ENTREES

Broiled Sirloin Steak 1.25	Broiled Ham Steak .60
Lamb Chops (1) .40 (2) .70	Veal Cutlets, Tomato Sauce .65
Fried Spring Chicken, Southern Style .75	Chipped Beef in Cream on Toast .60
Broiled Loin Pork Chops .65	Filet Mignon, Mushroom Sauce 1.10
Omelet with Cheese .45	Calf's Liver with Bacon .65
Roast Prime Ribs of Beef, Au Jus .75	

SALADS

Combination .35	Lettuce and Tomato .35	Crab .55
Shrimp .55	Chicken .55	Pear and Cottage Cheese .35
	Fruit Salad Royal .40	

SANDWICHES

Toasted Ham and Egg .35	Olive and Nut on Whole Wheat .35
Toasted Sardine and Bacon (3-deck) .60	
Cold Ham .25	Cheese .25
	Tongue .25

VEGETABLES

	N. P. BIG BAKED POTATO .15	
Lyonnais Potatoes .20	Potatoes au Gratin .20	Green Peas .20
Stewed Tomatoes .20	Green Beans .20	Baked Beans .25

DESSERTS and CHEESE

Pound Cake .15	Strawberry Mary Ann .25	Apple Pie .25
Fruit Gelatine .25	Ice Cream .15; with Cake .25	
Plum Pudding, Fruit Sauce .25	Chocolate Sundae .20	
	Cup Custard .25	
Camembert Cheese .25		Cream Cheese with Bar-le-Duc .25

FRUITS

Grapefruit .20	Rhubarb Sauce .25	Bananas with Cream .25
Apricots in Syrup .25		Orange .10
Cantaloupe .25	Kadota Figs .25	Chilled Watermelon .25
Sliced Pineapple .25		Strawberries with Cream .25

BEVERAGES

Coffee, pot .20	Tea, pot .20	Cocoa, pot .20
Milk, bottle .10	Postum .20	Lemonade .20
Buttermilk .10	Coca Cola .10	Root Beer .10
	Assorted Brands of Bottled Beer .25	
Ginger Ale .25		Washington Apple Juice .15
Bread and Butter .15	Hot Tea Biscuits .15	Toast .15
	Hol-Rye (Health Bread) .15	

Passengers On Special Diet Are Invited To Make Known Their Requirements To The Steward

PACIFIC RAILWAY

MINNESOTA

E. E. NELSON, Passenger Traffic Manager

Aviation Cadet. KEEP 'EM FLYING!

Alaska

The "Top Story" Full of Travel Charm

See America's "upstairs." Sail aboard a modern ship among Alaska's untrodden mountains! You'll discover new frontiers—wilderness, silence, unbroken peace. Long, cool summer days in the "Land of the Midnight Sun" promote sociable life aboard ship, sight-seeing in totemed towns, trading with the Indians, visiting mines, fishing fleets and salmon canneries.

E. E. NELSON

**Passenger Traffic Manager
Northern Pacific Railway
ST. PAUL, MINNESOTA**