



Rainier

NATIONAL PARK

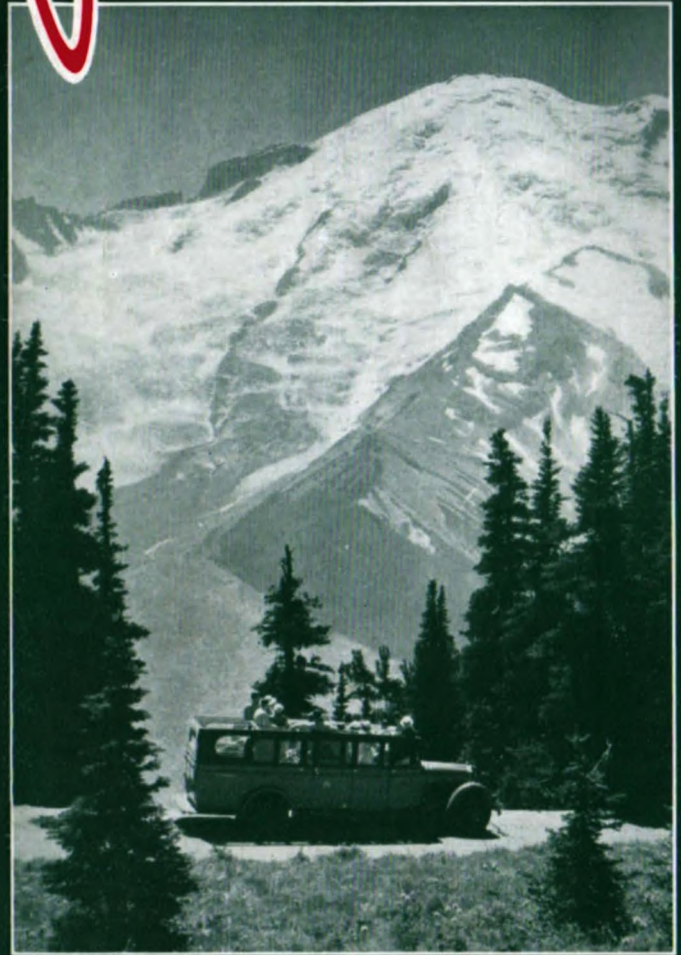


*On the
Route of the Air-Conditioned*
NORTH COAST LIMITED



Rainier

NATIONAL PARK



*On the
Route of the Air-Conditioned*
NORTH COAST LIMITED



"THE MOUNTAIN" FROM
YAKIMA HIGHWAY AS
IT APPROACHES SUNRISE
LODGE OVER A FIR-
SPIRED PLATEAU AND
ALPINE MEADOWS.

RAINIER— *America's All-Year Vacation Park*

RAINIER, national park mountain of the United States, won this distinction as long ago as 1899 because of its massive size, 100 square miles, and lofty height, 14,408 feet. Twenty-eight glaciers clothe its summit and sides, forming one of the largest glacier systems on any mountain in the world.

Centuries before the white man first set eyes on it, the Indians worshipped its great white form. Through legends handed down from generation to generation they recalled the time when it was America's mightiest volcano and reverently named it, "The mountain that was God."

Rainier National Park, in the northwest part of the state of Washington, is open the year around, scene of all-year sports in summer and ski headquarters in winter. The annual number of visitors has grown to more than 300,000, one-sixth of whom are winter guests.

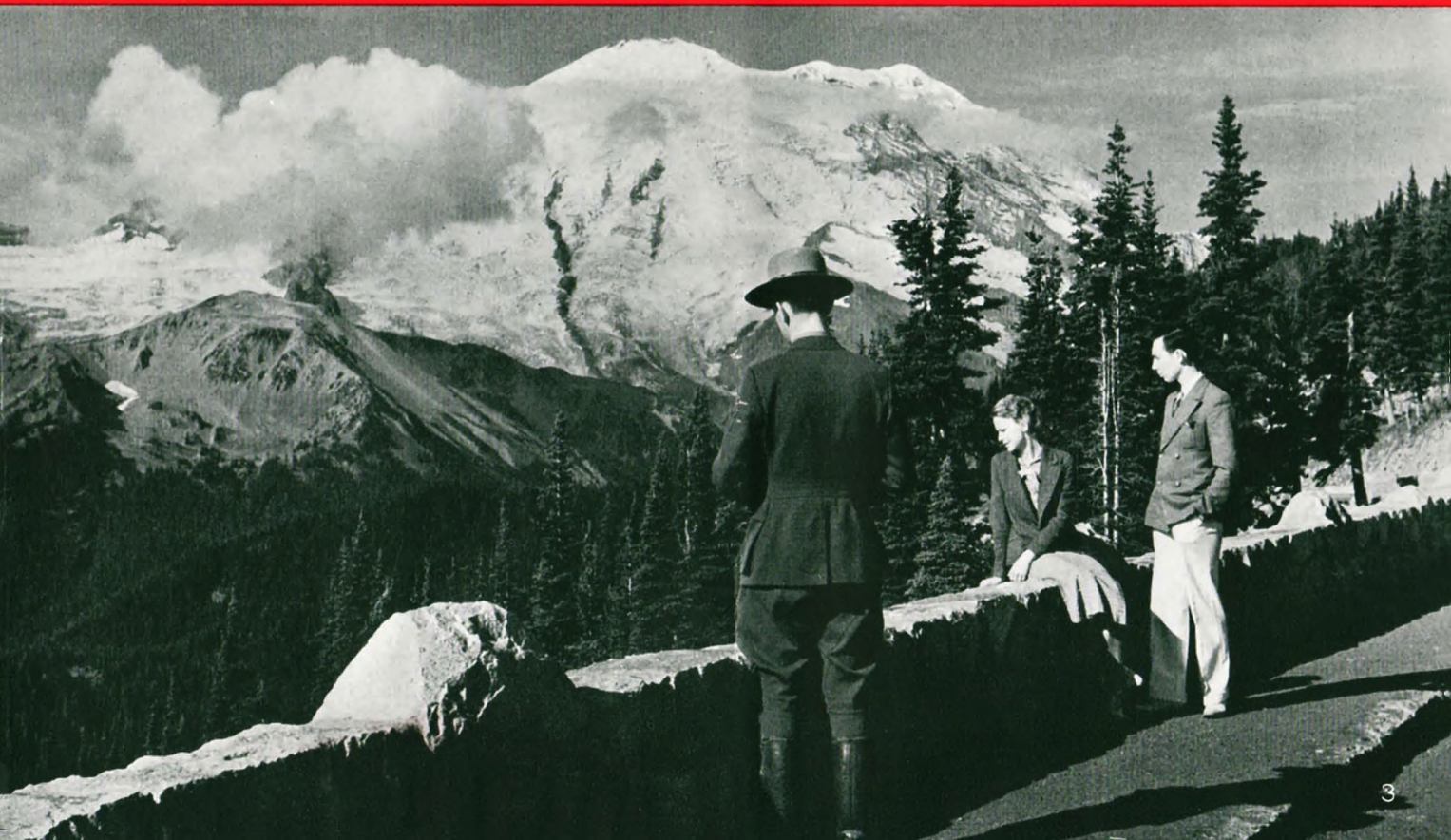
Rainier is reached through two gateway cities,

Tacoma on the west side and Yakima on the east. Rainier Park motor coaches serving both the east and west sides of the mountain also operate from Seattle. All of these gateways are on the Northern Pacific Railway.

Guest accommodations on the west side of the great peak are National Park Inn at the foot of the mountain and Paradise Inn and Lodge, 5,400 feet up, in Paradise Valley. The season at these resorts is continuous. On the east side of the mountain, hospitable Sunrise Lodge keeps the latch-string out from June 24 to October 1.

Mount Rainier is a vacation goal from every corner of the land. It is also readily visited in tours to the Pacific Northwest and California. Have the Northern Pacific plan your trip to the national park mountain now. It is one of the "first" when seeing America. Certainly no trip to the western coast should omit Rainier—America's noblest mountain.

CLOUDS AND MOUNTAIN CAUGHT IN A MOMENT OF STERN GRANDEUR FROM THIS LOFTY OUTLOOK AT SUNRISE POINT ON THE YAKIMA HIGHWAY NEAR SUNRISE LODGE.



WHEN FIRST SIGHTED
ON THE RAINIER PARK
DETOUR THE MOUNTAIN
SUDDENLY TOWERS
AHEAD WITH TINTED
LAKE TIPSOO AT ITS
FEET.





THE ROYAL ROAD to RAINIER

A REGAL road leads to King Rainier on his throne. It is the Naches Highway from Yakima, Washington, to the new Sunrise area of Rainier National Park. This highway is 91 miles long. It passes through one of America's most bountiful valleys, the Yakima, crosses one of the nation's principal mountain ranges, the Cascades, and "tunnels" through towering forests of the big timber country. On the sunrise side of "His Mountain Majesty" it connects with the National Park Highway which leads on to Tacoma and Seattle, a total distance of nearly 200 miles from Yakima. Few are the world's roads which may be mentioned in the same breath with the Yakima highway.

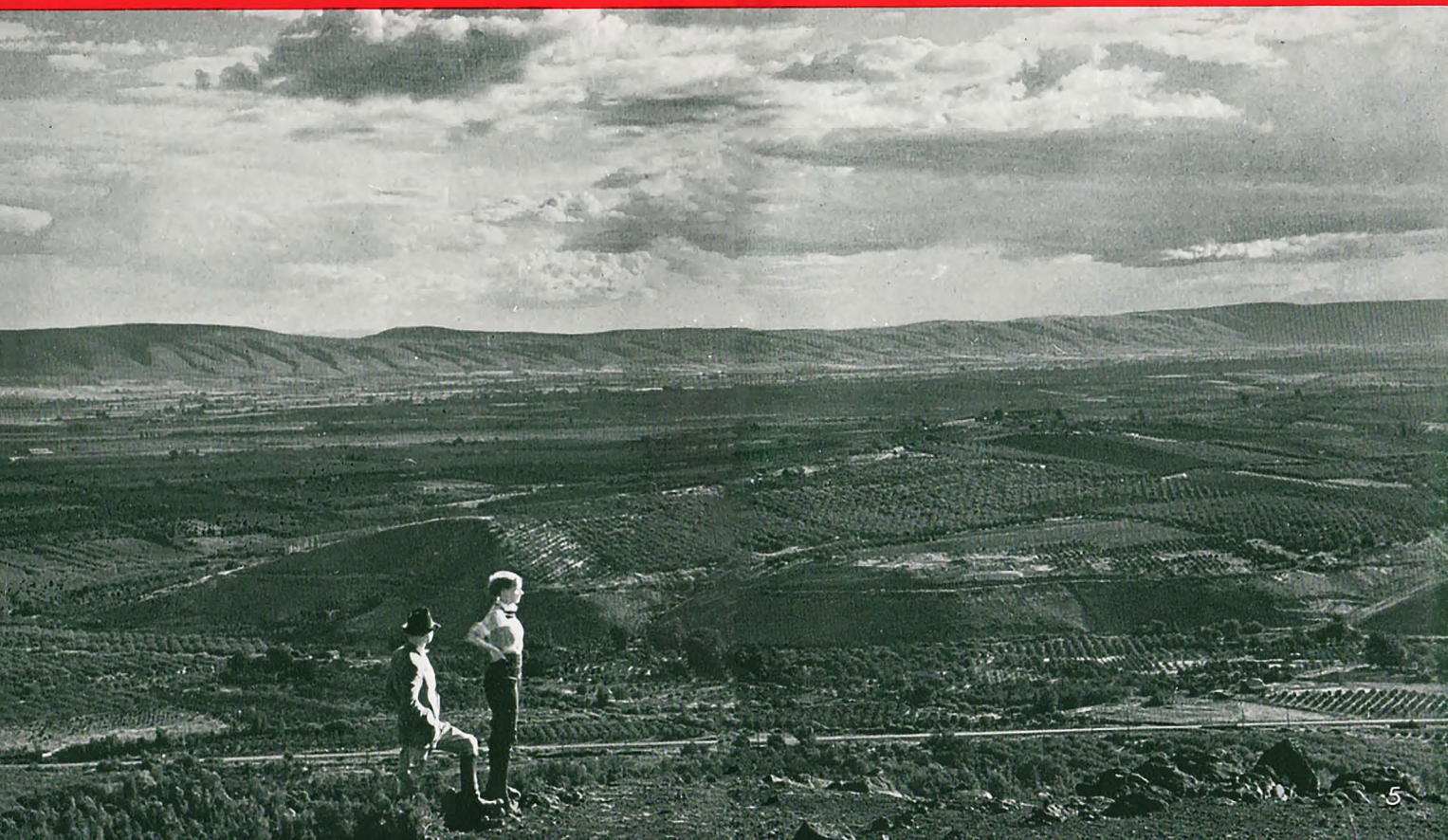
Ordinarily 200 miles of road are just 200 miles—classified as smooth or bumpy, fast, moderate, or slow, easy or greedy on the gas and having certain, or perhaps uncertain, refreshment stops along the way.

But nobody speaks in ordinary language about this Yakima-Tacoma-Seattle highway. For all who ride over it are too enthralled by its beauty to have any attention left for commonplaces.

First and foremost, the road goes to "The Mountain" and it leaves "The Mountain." Arriving, everything you see on the way is climaxed by the mighty supremacy of the eternally snow-capped giant. Departing, the huge white monarch remains a gorgeous memory shedding its glory on the receding scenes.

THE HIGHWAY LEADS THROUGH
YAKIMA VALLEY ORCHARDS.

LOOKING DOWN ON YAKIMA VALLEY FROM LOOKOUT POINT.





TRUSTY MOUNTS AND
TRAILS WINDING
THROUGH A MOUNTAIN
WONDERLAND CONVERT
SUNRISE LODGE GUESTS
INTO WORSHIPPING
MOUNTAINEERS.

THE ROYAL ROAD TO RAINIER

Around Yakima, irrigation has transformed from waste to abundant fruitfulness the fertile topsoil deposited on the Yakima Valley ages ago by "The Mountain" when it was a seething, roaring volcano. West of the Cascades, natural moisture and the mild influence of the Japanese current produce plant and tree growth of amazing luxuriance in the same kind of soil.

In the short space of only 200 miles the road passes through three distinct belts of climate—north temperate, sub-arctic and sub-tropical—and the scenic beauty changes accordingly!

This unusual road is being traversed each summer by travelers many of whom afterward speak of it as the "highlight of my entire trip." They include it by routing their journey over the Northern Pacific Railway and transferring to Rainier Park motor coaches for that portion of the trip lying between Yakima and Tacoma-Seattle.

Westbound travelers change at Yakima for this spectacular "Rainier Park Detour." A Rainier Park motor coach or auto picks them up and takes them through the well-groomed, wide-paved city of 30,000 inhabitants which is one of the largest fruit-shipping centers in the country. Even before the big fruit orchards of the surrounding Yakima Valley come into view, bountiful fruit trees are seen on the lawns of attractive city homes. A little later when the far-spreading orchards appear, their variety is astounding. Groves of pear, peach, prune, cherry, apricot and plum trees checker the landscape in competition with seemingly endless plantations of famous Yakima apples. Small fruits grow in profusion and melons by the trainload.

High along the slopes and leading through the orchards, fields and gardens, run the irrigation flumes and ditches flashing their waters in the sunshine. Thrifty country homes nestle numerously in the far-spreading plaid of the orchards, totaling a greater number and sheltering a greater population to the square mile than most of the thickly settled farm regions of the United States.

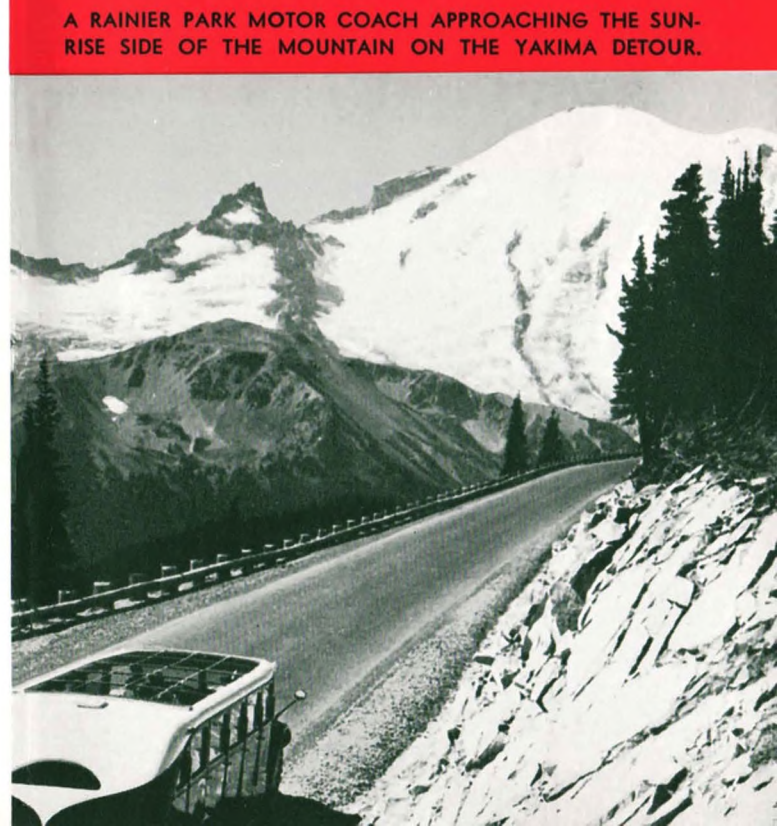
Drivers of Rainier Park motor coaches pilot the winding way up to "Lookout Point" and spread the "valley" out before their passengers for inspection. This broad view of the area introduces the long series of closeups of individual orchards and inviting homes which the highway reveals as it climbs on towards "The Mountain."

If it is fruit picking time—and it is seldom anything else at Yakima from spring to fall—stops are perhaps made along the way to purchase and test some samples of the nectarean products of the land. Hurrying mountain streams chatter beside the road and orchardists and sportsmen are seen in leisure hours flicking the water for rainbow trout. Sheep going to or from mountain pastures often pass along the highway in great droves, their herders wearing broad-brimmed hats. Yakima Indians from the nearby reservation jaunt leisurely along in buggies or wagons behind cantering ponies or whiz by in modern automobiles.

The cultivated area glides behind and the road becomes a twilight aisle walled by towering evergreens which almost shut out the sky. Ground squirrels and chipmunks frisk on the tree trunks and over the needle-padded earth of the dense adjoining forest. Colonies of summer homes cluster together under the great trees on the river bank. The canyon narrows almost to a fissure and the road sets itself determinedly to the task of mounting Rainier's forest throne. In a short time it has risen above the tops of the tall trees in the bottom of the canyon. Overhead the forest looms in a green sloping wall that reaches up and up to the gray stone



YAKIMA PEAK AT CHINOOK PASS SCANS ITS OWN BEAUTY
IN A NEARBY LAKE.



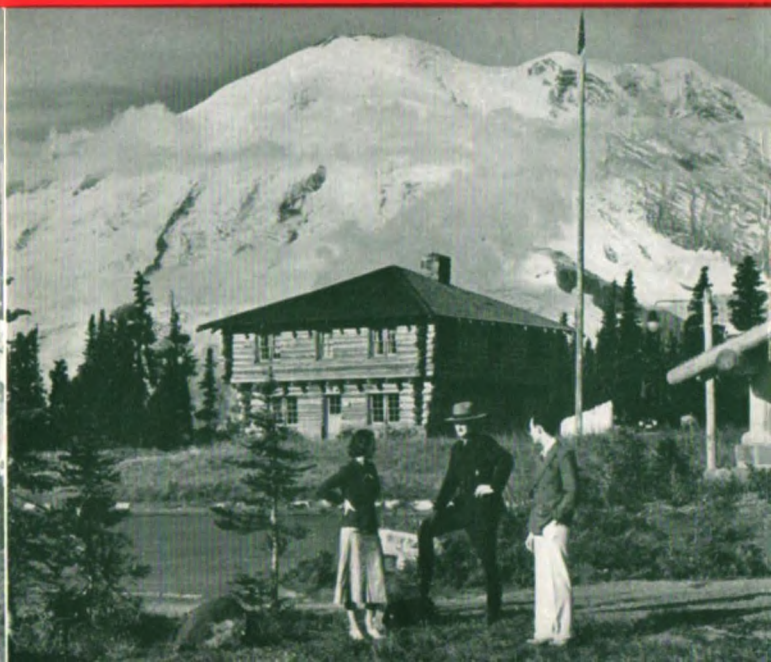
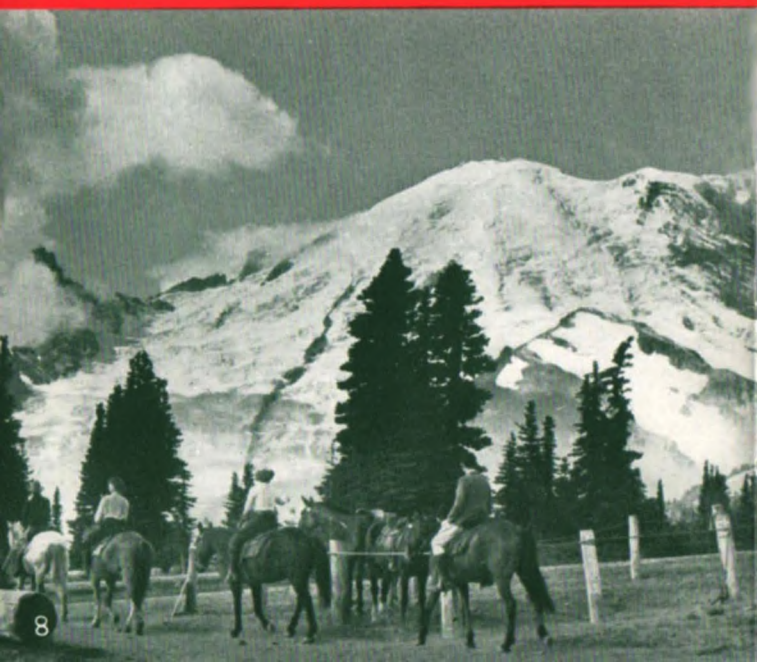
A RAINIER PARK MOTOR COACH APPROACHING THE SUN-
RISE SIDE OF THE MOUNTAIN ON THE YAKIMA DETOUR.



ABOVE—SUNRISE LODGE, RESORT HEADQUARTERS AND HALF-WAY POINT ON THE SPECTACULAR 200-MILE RAINIER PARK DETOUR MONOPOLIZES THE EASTERN SLOPE.

BELOW — OFF ON THE TRAIL WITH A GUIDE TO LEAD THE WAY.

BELOW — A BLOCKHOUSE-TYPE BUILDING HOUSES RANGER OFFICES AND PARK MUSEUM AT SUNRISE.





ONE TYPE OF RAINIER GUEST ACCOMMODATIONS—A COZY, RUSTIC CABIN TO CALL YOUR OWN.



THE ATTRACTIVE, FULLY-EQUIPPED CAFETERIA AT SUNRISE LODGE.

THE ROYAL ROAD TO RAINIER

gables of the mountains. Bit by bit it sinks below—an ever-deepening green trough while the rim above grows gradually shallower. Mile after mile the forest spreads, green, unmoving and silent except for the covert whisperings of the wind. The ever-soaring road at last becomes a niche chiseled out of the very rafters of the range. It writhes in the struggle of the ascent and then with a final upward swing projects itself across the summit.

Hail to the King! There sublimely to the right sits Mount Rainier, monarch of all the Cascades, decked in ermine snow and jeweled with diamond glaciers.

You have been presented pompously at court and the Yakima Highway is the road that did it! Below you, tiny Tipsoo Lake lies like a spangle in the rich scene. Four miles farther on, at an altitude of a mile, Sunrise Lodge extends you its hospitality at the foot of the mountain opposite Emmons Glacier, largest glacier in the United States.

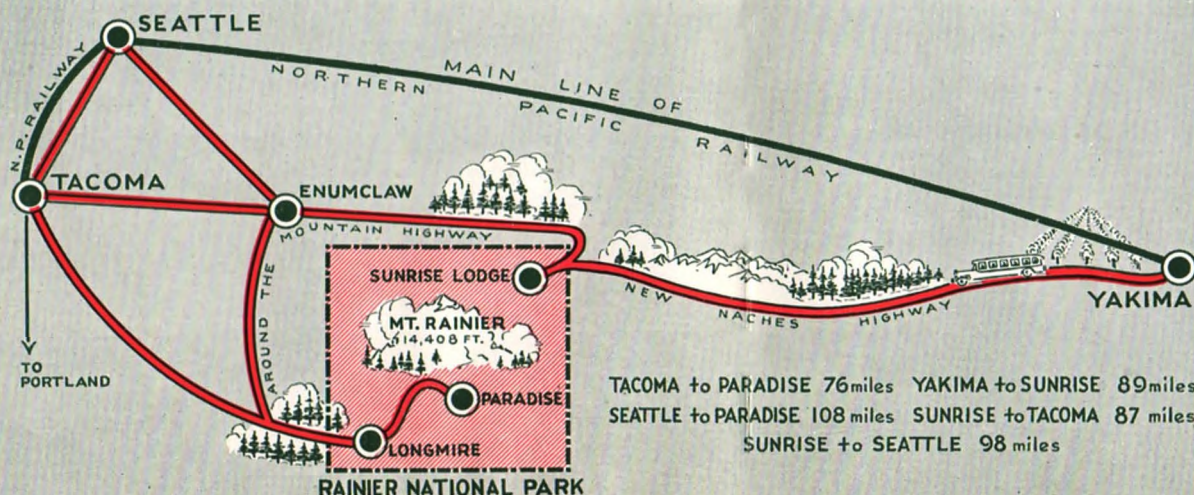
Sunrise Lodge is the halfway mark of the Rainier Park Detour.

Leaving the Lodge the road winds still higher and rounds a spur of the main Cascades to descend into the Klickitat Valley.

Tall sword ferns, Oregon grape, English ivy, rhododendron, dogwood, salal, azalea, huckleberry and countless other shrubs, flowers and plants appear in increasing profusion as the road drops lower and lower. Festoons of moss dangle from the branches of mammoth trees. The road fringes a pond full of floating logs and soon one of the large lumber mills of the Pacific Northwest comes in sight near Enumclaw, Wash. Orchard, truck, dairy farms, towns and villages fill the remaining distance until Tacoma and Seattle come into view beside the blue waters of Puget Sound.

Ahead are the vacation treasures of the Pacific—Washington, Oregon, California, British Columbia—perhaps even the Orient and Alaska! But behind is that gem for the treasure box of memory—the Yakima Highway.

For travelers eastbound from Seattle or Tacoma the Yakima Highway loses none of its thrills. It is not a one-way experience. It can be equally enjoyed on the way either to or from the West Coast!



MAP SHOWING ROUTE OF RAINIER MOTOR BUSES FROM YAKIMA, SEATTLE AND TACOMA GATEWAYS TO SUNRISE AND PARADISE.



ONE OF FINEST REMAIN-
ING STANDS OF DOUG-
LAS FIR TIMBER WALLS
THE HIGHWAY FOR
MILES ON THE WAY TO
AND FROM THE MOUN-
TAIN.

PARADISE VALLEY AND ITS RESORTS

HAVE you never been to Paradise?

You simply must go there and if you take the Northern Pacific to Tacoma or Seattle you can't miss it! Just board a Rainier Park coach at Tacoma, and Paradise is only 76 miles away; 108 miles if you start from Seattle.

Paradise, of course, is open the year around. Even if you have only time to say "Hello" and feast on

the sublime view, you'll be more than welcome and the experience will do you permanent good.

Paradise Lodge and Paradise Inn are big, rustic chalets which provide accommodations ranging from room with running water to room with private bath. Evenings are gay and cozy around the big fireplaces. Dances are held in the spacious lobby of the Inn. Both of the Paradise resorts are typically alpine. Down at the foot of the mountain, in the forest, is National Park Inn, long a popular resort near the warm Longmire Springs.

If you have the least bit of the mountaineer in you, you'll stay at Rainier as long as possible. How does anybody know that? Well, there's a legend, a tradition. You may call it a superstition. Mount Rainier casts a strange spell. While near it you have an overpowering feeling of its presence day and night something like the sixth sense that tells you there is another person in the same room. You've had that feeling? Then you'll understand Rainier, object of Indian adoration, mountain of many moods.

It's so big it's magnetic. It rises loftily from lush, evergreen valleys to a perpetual white Arctic. At



ABOVE—A GLIMPSE OF THE GREAT RUSTIC LOBBY OF PARADISE INN.



RIGHT — PARADISE INN HOSPITALITY IS TYPIFIED IN ITS SWISS - STYLE FACADE AND STOOP FRONTING THE WESTERN BASE OF THE MOUNTAIN.

"PARADISE VALLEY," THE
FIRST EXPLORERS
CALLED IT, AND PARA-
DISE IT STILL IS, WITH
GREEN FORESTS AND
AVALANCHE LILIES GAR-
NISHING ITS PERPETUAL
SNOWS.



PARADISE VALLEY AND ITS RESORTS

the foot of the mountain the seasons come and go. At the summit, winter reigns continuously.

Swimming, hiking, camera-shooting, trout-fishing, game-stalking, snowballing, boating and horseback riding all figure in the constant round of summer activity.

Nature Coasting down snow slopes in the celebrated "tin pants" is one of Rainier's unique sports, a paraffin coating on the seat of the breeches taking the place of a toboggan. Another unusual adventure is the exploration of the ice caves in the Paradise glacier and the ice crevasses in the Nisqually glacier, a moving body of ice. The Tatoosh mountains and countless lakes and streams also are easily accessible. Saddle horse trips are available for those who prefer to ride.

YEAR 'ROUND WINTER SPORTS

Mount Rainier is the national park Winter Fun center of the Pacific Northwest and its ski terrain is among the finest to be found anywhere. It has three distinct alpine sport seasons. The Winter season extends from December to March, the Spring season from March to July and the Summer season through July and August.

Ski speeds of 80 miles an hour are attained on the deep, powder snows of "The Mountain" and a snow-fall normally 16 to 30 feet deep uphinders the ski runs. A ski tow eliminates uphill climbs and permits six times more skiing. Important regional and inter-regional ski events for men and women are scheduled in winter. Daily stage service is operated from Seattle and Tacoma direct to Paradise Inn.

Otto Lang, international authority on skiing, conducts a Rainier branch of the celebrated Hannes Schneider School of Austria and assists guests to get the utmost fun and benefit from the sport. He coaches both beginners and professionals and has had a hand in developing ski stars here and abroad.

If in the Pacific Northwest in winter, make it a point to at least enjoy one or more of the festive weekends at Paradise Inn. Better still, make the Inn your winter vacation headquarters.

Rates of all of Rainier's resorts are shown on the following pages, together with motor coach schedules and fares. Northern Pacific representatives will be glad to make resort reservations for you along with your travel arrangements, if you like.

E. E. NELSON, *Passenger Traffic Manager,*
Northern Pacific Railway, St. Paul, Minnesota



ABOVE — START OF AN 80-MILE-AN-HOUR DASH ON THE POWDER SNOW OF THE RAINIER SKI COURSE. BELOW — IN FLIGHT! AN EXPERT MAKES A DIFFICULT JUMP-TURN.





ABOVE — NATURE COASTING ON MOUNT RAINIER IN SUMMER. PARAFFINED PANTS SERVE AS THE TOBOGGAN.

BELOW—HIKERS ON PICTURE ROCK ABOVE PARADISE VALLEY, THE TATOOSH RANGE AND MT. ST. HELENS BEYOND.

TRANSPORTATION

SUMMER SEASON

(Paradise—From June 15—September 15, inclusive)
(Sunrise—From June 15—September 4, inclusive)
Starting date of Sunrise transportation service is dependent on snow conditions on Park Highway.

Read Down					Read Up
8:00 am	*2:00 pm	Lv.....	Seattle	Ar.	12:20 pm 7:50 pm
9:15 am	3:15 pm	Lv.....	Tacoma	Ar.	11:05 am 6:35 pm
12:30 pm	6:30 pm	Ar...	Paradise Inn ..	Lv.	*8:00 am 3:30 pm

RATES

	(Mileage)	Round Trip	One Way
Seattle to Paradise Inn.....	108	\$10.50	\$5.25
Tacoma to Paradise Inn.....	76	9.00	4.50
To Paradise from either of above cities and return to other city		9.75	

Read Down				Read Up	Miles to Sunrise	Rates to Round Trip	One Way
8:00 am	Lv.....	Seattle	Ar.	7:30 pm	98	\$10.50	\$5.25
8:30 am	Lv.....	Tacoma	Ar.	7:00 pm	87	10.50	5.25
8:00 am	Lv.....	Yakima	Ar.	7:30 pm	89	10.50	5.25
12:45 pm	Ar.....	Sunrise	Lv.	3:30 pm			

NOTE: Morning stages reach Paradise Inn for luncheon.
*Afternoon stages from Seattle and Tacoma and morning stages from Park operate only from June 24 to September 4, inclusive. Stages leave from Rainier National Park Company offices at 418 University St., Seattle, and 776 Commerce St., Tacoma.
Stage Depot, Yakima . . . Auto Club Office, Commercial Hotel.

WINTER SEASON

(From September 16—June 14, inclusive)

Read Down				Read Up
8:20 am	Lv.....	Seattle	Ar.	7:10 pm
9:30 am	Lv.....	Tacoma	Ar.	6:00 pm
12:40 pm	Ar...	Paradise Inn ..	Lv.	3:00 pm

RATES

	(Mileage)	Round Trip	One Way
Seattle to Paradise.....	108	\$10.50	\$5.25
Tacoma to Paradise.....	76	9.00	4.50

SUNRISE DETOUR—From Seattle or Tacoma by motor coach to Sunrise in Rainier Park, thence to Yakima. (Trip may be made in reverse direction, starting from Yakima.) One-day detour, \$11.50; two-day detour, \$15.75, each—two in a cabin; one in cabin, \$17.25.

INFORMATION

THE NATIONAL PARK SERVICE administers Rainier National Park. Rangers will answer your questions.

SADDLE HORSE trips, \$3.50 to \$5.00.

BATHING SUITS and BOATS at Reflection Lake. While lakes at this altitude are shallow and sun-warmed, the water is cool enough to be stimulating.

COASTING equipment, "paraffined pants," etc., can be rented from Guide Department.

FISHING in lakes and streams. Tackle can be rented at any hotel. No license fee.

ENTERTAINMENTS. Pictures at Guide Building, Paradise, each evening. Dancing at Paradise Inn.

ACCOMMODATIONS

At Paradise:

THE INN. (Summer Season, June 24 to August 28.) 270 guests. High class, rustic mountain chalet. Rates, \$6.50 to \$9.00 per day, American Plan. Children under 8, half rate.

THE LODGE. (Rooms, April 19 to November 1.) (Cabins, June 24 to October 1.) Main lodge has large cafeteria and 35 bedrooms, equipped with electric light and heat, hot and cold running water and complete furnishings. For rooms in main lodge, rates range from \$3.00 to \$4.00 without meals. 250 cabins adjoin lodge. Each is equipped with essential rustic furniture, electric lights, stove and cold running water. Adequate maid service. Shower and tub baths and sanitary toilets convenient to all cabins.

Rates in cabins (Blankets and linen furnished):

1 or 2 persons in 1-room cabin—one night	\$3.00
Three nights	8.00
1 or 4 persons in 3-room cabin (two bedrooms and kitchen)—one night	6.00
Three nights	16.00
Each additional person	1.25

At Sunrise:

LODGE AND CABINS. (Season, June 24 to October 1.) New main lodge surrounded by 215 rustic clapboard cabins, which are comfortably furnished with double beds, electric lights, running water, stove and other conveniences. Bath-toilet bungalows are close at hand. Meals are served in a modern and attractive cafeteria in the main lodge at reasonable prices. Rates for cabins are the same as for the Paradise cabins.

At Longmire:

NATIONAL PARK INN. (Season, year around.)

RATES WITHOUT MEALS:

	One Person	Each Additional Person
Room without bath (hot and cold water)	\$2.50	\$1.00
Room with private bath	3.50	1.50

3-room housekeeping cabins same rates as at Paradise.

DISCOUNTS: Guests staying at Paradise Inn are allowed a 10 per cent discount for one week or longer. At Paradise Lodge and National Park Inn a discount of 10 per cent on rooms only is allowed for a stay of one week or longer.

CHILDREN: Under 8 years, half price.

MAIL: U. S. Post Office at Paradise Inn, National Park Inn and Sunrise Lodge.

TELEPHONE AND TELEGRAPH—maintained at main units.

MEDICAL SERVICE: A competent medical attendant is stationed at Paradise Inn and Sunrise Lodge.

FOR FURTHER INFORMATION or reservations address:
Rainier National Park Company, Tacoma, Washington, or

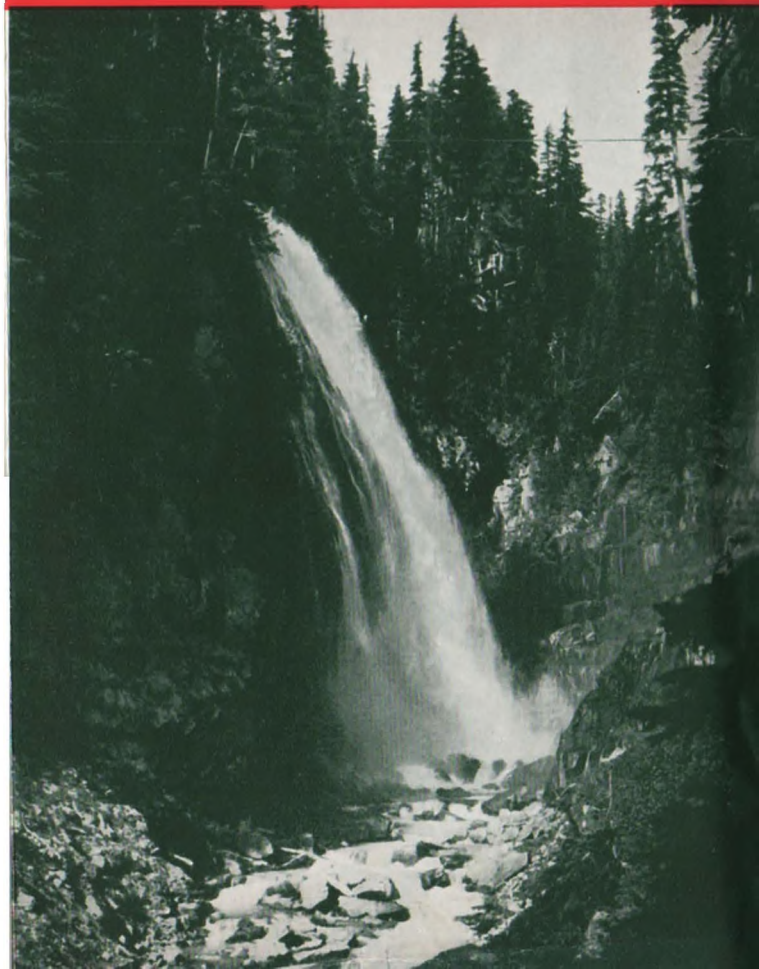
Any agent or office of the

NORTHERN PACIFIC RAILWAY



ON THE BRINK OF A DEEP CREVASSE IN ONE OF RAINIER'S
28 GLACIERS.

NARADA FALLS SINGS IN ITS ROCK-BOUND CANYON, ONE
OF NUMEROUS FALLS ON THE MOUNTAIN.





WHEN you travel in the West, we commend to you the scenic route and comforts of the air-conditioned, roller-bearing North Coast Limited. . . . Northern Pacific offices, in principal cities, invite your inquiries and will be glad to assist in planning your itinerary. Or you may address

E. E. NELSON • PASSENGER TRAFFIC MANAGER • ST. PAUL, MINNESOTA

NORTHERN PACIFIC RAILWAY

