



New York's Famous Skyline From Brooklyn

GOAL OF EASTERN TRAVEL . . .

New York and Its Great World's Fair

FROM April 30 to October 31, goal for millions of eastern travelers will be New York's gigantic World's Fair, "The World of Tomorrow."

More than 200 buildings house the displays of industry and exhibits of sixty of the world's leading nations including our own. A total of \$150,000,000 of capital is combined with art and science to produce this thrilling spectacle of a lifetime.

Through arrangements with the American Express Travel Service, an international organization, the Northern Pacific can guarantee hotel rooms and carefree tours of New York City and the Fair.

We will be glad to assist with your travel plans and prepare itineraries without obligation on your part. When you travel, go "the scenic route" and enjoy the luxurious comforts, courteous personnel and delicious meals on the air-conditioned



Central theme of the New York World's Fair is the 700-foot Trylon and the Perisphere housing a spectacular exhibit of "The World of Tomorrow"

North Coast Limited

GRAND CIRCLE TOUR . . .

You can start from your home station, circle the United States from Coast to Coast, visiting both the San Francisco Golden Gate Exposition and the New York World's Fair, stop over in the nation's principal cities, see the great national parks and other outstanding scenic attractions, all on one rail ticket. On sale daily during period when the Fairs are open. Ask for additional information.

\$90 ROUND TRIP
In COACHES

\$135 ROUND TRIP
In PULLMANS
(Berths Extra)

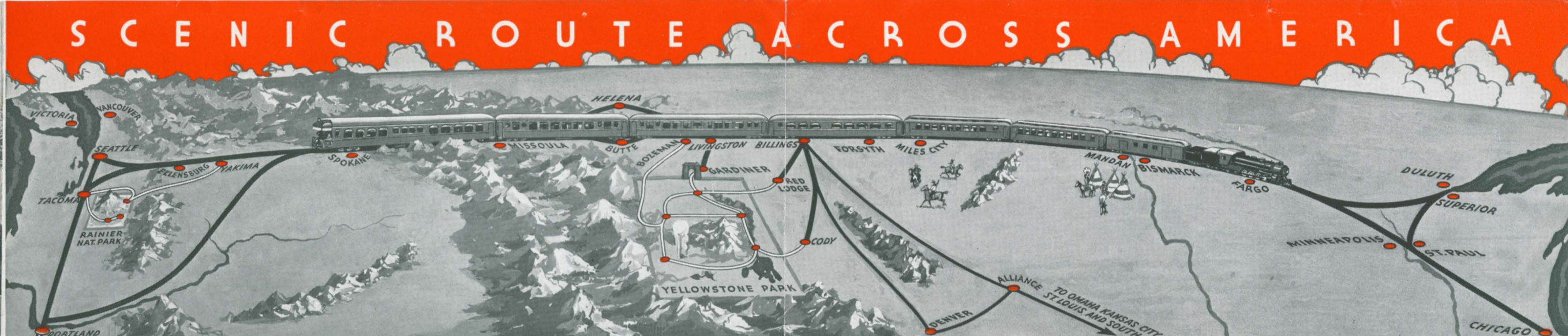


FREE TRAVEL SERVICE

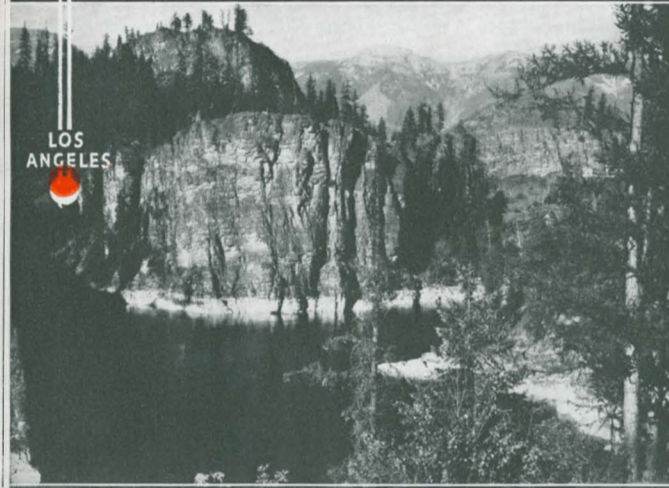
For travel information, ask your Northern Pacific agent, or consult any of the representatives listed on the reverse side of this page. There's no obligation.



Scenic Route of the Air-Conditioned, Roller-Bearing
NORTH COAST LIMITED



Where the driving is done best—in the modern engine cab of the North Coast Limited.



Cabinet Gorge, a world-famous train window scene on the Idaho-Montana line.



Sky-Blue Water of 10,000 Lakes give storied Minneapolis its name.

Schedule of the NORTH COAST LIMITED

Completely Air-Conditioned

Eastbound Read Down				Westbound Read Up			
Sunday	9:30 pm	Lv.	Seattle	Ar.	7:50 am	Wednesday	
Sunday	9:20 pm	Lv.	Tacoma	Ar.	7:50 am	Wednesday	
Monday	1:08 am	Lv.	Ellensburg	Ar.	3:56 am	Wednesday	
Monday	2:15 am	Lv.	Yakima	Ar.	2:50 am	Wednesday	
Sunday	9:30 pm	Lv.	Portland	Ar.	7:35 am	Wednesday	
via S. P. & S. Ry.							
Monday	8:05 am	Lv.	Spokane	Ar.	8:50 pm	Tuesday	
Monday	3:20 pm	Ar.	Missoula	Lv.	3:07 pm	Tuesday	
Mountain Time							
Monday	6:05 pm	Ar.	Butte	Lv.	12:30 pm	Tuesday	
Monday	6:05 pm	Ar.	Helena	Lv.	12:01 pm	Tuesday	
Monday	10:15 pm	Ar.	Livingston	Lv.	8:20 am	Tuesday	
Tuesday	10:30 am	Ar.	Gardiner	Lv.	7:15 pm	Monday	
Gateway to Yellowstone							
Tuesday	12:35 am	Ar.	Billings	Lv.	5:35 am	Tuesday	
Tuesday	2:48 am	Ar.	Forsyth	Lv.	3:15 am	Tuesday	
Tuesday	3:56 am	Ar.	Miles City	Lv.	1:53 am	Tuesday	
Tuesday	5:39 am	Ar.	Glendive	Lv.	11:57 pm	Monday	
Tuesday	8:10 am	Ar.	Dickinson	Lv.	9:25 pm	Monday	
Tuesday	10:29 am	Ar.	Mandan	Lv.	6:55 pm	Monday	
Central Time							
Tuesday	11:53 am	Ar.	Bismarck	Lv.	7:31 pm	Monday	
Tuesday	1:51 pm	Ar.	Jamestown	Lv.	5:12 pm	Monday	
Tuesday	4:03 pm	Ar.	Fargo	Lv.	2:50 pm	Monday	
Tuesday	10:54 pm	Ar.	Superior	Lv.	8:05 am	Monday	
Tuesday	11:10 pm	Ar.	Duluth	Lv.	7:50 am	Monday	
Tuesday	10:12 pm	Ar.	Minneapolis	Lv.	9:10 am	Monday	
Tuesday	10:45 pm	Ar.	St. Paul (N. P. Ry.)	Lv.	8:35 am	Monday	
Wednesday	8:45 am	Ar.	Chicago (Union Station)	Lv.	11:00 pm	Sunday	
via C. B. & Q. R. R.							

STANDARD PULLMANS—

Between:
Seattle and Chicago } 10 sections
Portland and Chicago } 1 drawing room
Tacoma-Seattle and Chicago } 1 drawing room
Seattle and Spokane } 1 compartment
Between Butte and Kansas City,
12 sections, 1 drawing room.
(Via C. B. & Q. Trains 44 and 43 between
Billings and Kansas City)

DOUBLE BEDROOM PULLMANS—

Between Seattle and Chicago, 6 bedrooms, 6 sections.

Equipment

TOURIST SLEEPING CARS—

Between Seattle and Chicago.
Between Portland and Chicago.
Between Butte and Kansas City,
16 sections, (Summer Season).
(Via C. B. & Q. Trains 44 and 43 between
Billings and Kansas City)

DE LUXE COACHES—

Between Seattle and Chicago.
Between Portland and Chicago.

OBSERVATION-CLUB CAR—

Between Seattle and Chicago.
Between Portland and Pasco (S. P. & S.).

DINING CAR—

Between Seattle and Chicago.

ALL REGULAR CARS ON THE NORTH COAST LIMITED ARE AIR-CONDITIONED

Downtown St. Paul, historic portal of the Northwest for over 100 years.

Minneapolis rises proudly above Third Avenue bridge, spanning the Mississippi.

Chicago Union Station, convenient eastern terminal of the North Coast Limited.



Famously Good Meals Enrich the Journey

Back of every meal in a North Coast Limited dining car is a reputation and tradition dating back to 1883, when the Northern Pacific first introduced trans-continental dining car service.

Selected food products of the region traversed are featured on the menus—fruits, meats, poultry, vegetables and dairy products—in addition to other delicacies from far and near. Great Big Baked Potatoes, Great Big Baked Apples, Individual Lemon Cream Pies and other Northern Pacific specialties have become famous among travelers everywhere. Prices range as low as only 50 cents for complete plate meals.



Luxurious Cars for Seeing the Northwest

Multiple is the service of North Coast Limited Observation-Club Cars, which not only are handsome observatories for the 1,000 miles of mountains and 1,406 miles of rivers across the Northwest, but also provide varied luxuries and conveniences.

Radio, soda fountain, reading desk, card room, barber and beauty shop with valet service, shower bath for gentlemen, and lounge and shower bath for ladies are facilities of these cars which may be enjoyed while the scenery of lumbering, mining and ranching empires skims past outside.

Stylish Standard and Thrifty Tourist Cars

Celebrated Chief-type standard sleeping cars of this train are restfully decorated and appointed, having the added advantages of cleanliness, proper temperature and absence of noise which scientific air-conditioning gives.

Each car is roomy, containing only ten sections, one drawing room and one compartment.

North Coast Limited Tourist Sleeping Cars were standard sleepers only a few years ago and provide the essentials of comfort at lower cost, both in rail ticket and berth fare.

They are upholstered with Mohair, have carpeted aisles, electric lights in lower and upper berths and dressing rooms of ample size.



De Luxe Coach Comfort at West's Lowest Fares

Especially built for long distance occupancy, North Coast Limited coaches with porter in charge, present inviting stream-lined interiors finished in blue, gray or brown. The deeply-upholstered, rotating, reclining seats are of the Northern Pacific's own design. Electric illumination is semi-diffused with supplementary individual chair lights. There are separate lounge and dressing rooms for ladies and a lounge-dressing room for men. Dressing rooms are handsomely equipped—hot and cold running water, China washbowls, free liquid soap and paper towels. The West's lowest fares apply in these de luxe, air-conditioned coaches.



Ala Carte

NORTH COAST LIMITED

Dinner
One Dollar Twenty-five Cents

Chilled Tomato Juice

Green Onions Radishes

Ox Tail Soup, Anglaise

Mountain Trout Saute with Rasher Bacon
Potato Chips

Whole Squab Chicken, Parisienne
En Casserole

Barbecued Ham Steak Grilled Lamb Chops
Honey Cream Gravy Park Avenue

Omelet with Strawberries

N. P. BIG BAKED POTATO

Washington Asparagus, Drawn Butter

Bartlett Pear Salad

Hot Tea Biscuits

Apple Pie a la Mode

Chocolate Sundae Honey Dew Melon

The Cheese Crock, Crackers

Coffee

75c Casserole Dinner 75c

Whole Squab Chicken, Parisienne, Baked Potato, Asparagus, Hot Tea Biscuits, Coffee, Tea or Milk. Any dessert selected from Menu above.
(Fish or Eggs will be substituted on above Menu upon Request.)

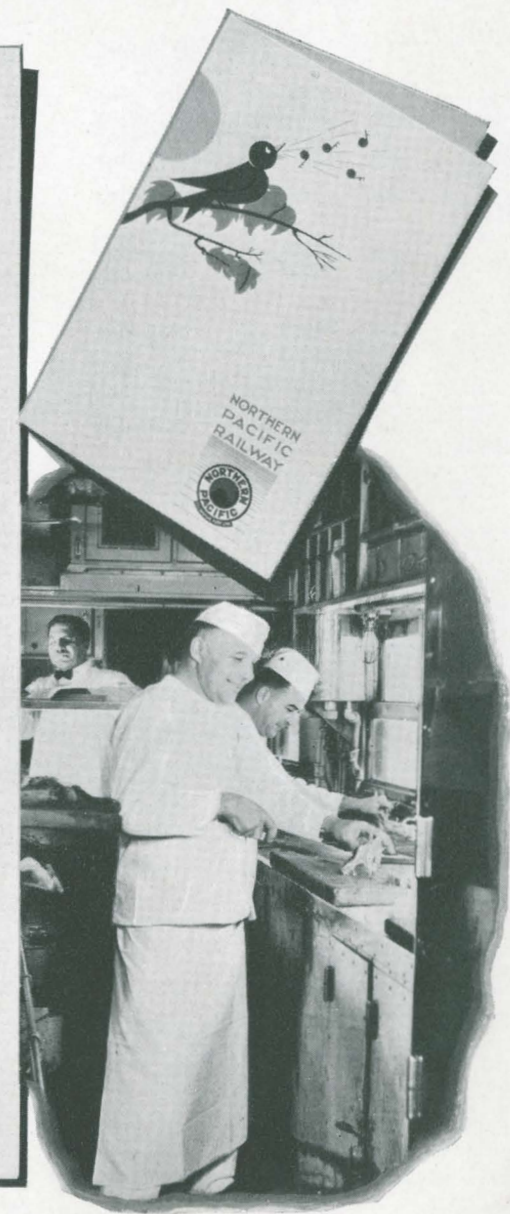
50c Plate Dinner 50c

The Steward will suggest several items from which selection may be made. This meal includes meat or fish, potatoes, vegetable, bread and butter, coffee, tea or milk.

SUGGESTIONS FOR IMPROVEMENT OF THE SERVICE ARE INVITED

A. W. THOMPSON, SUPERINTENDENT DINING CARS E. E. NELSON, PASSENGER TRAFFIC MANAGER
SAINT PAUL, MINNESOTA

NORTHERN PACIFIC RAILWAY



Yellowstone National Park

See Wonderland en route!

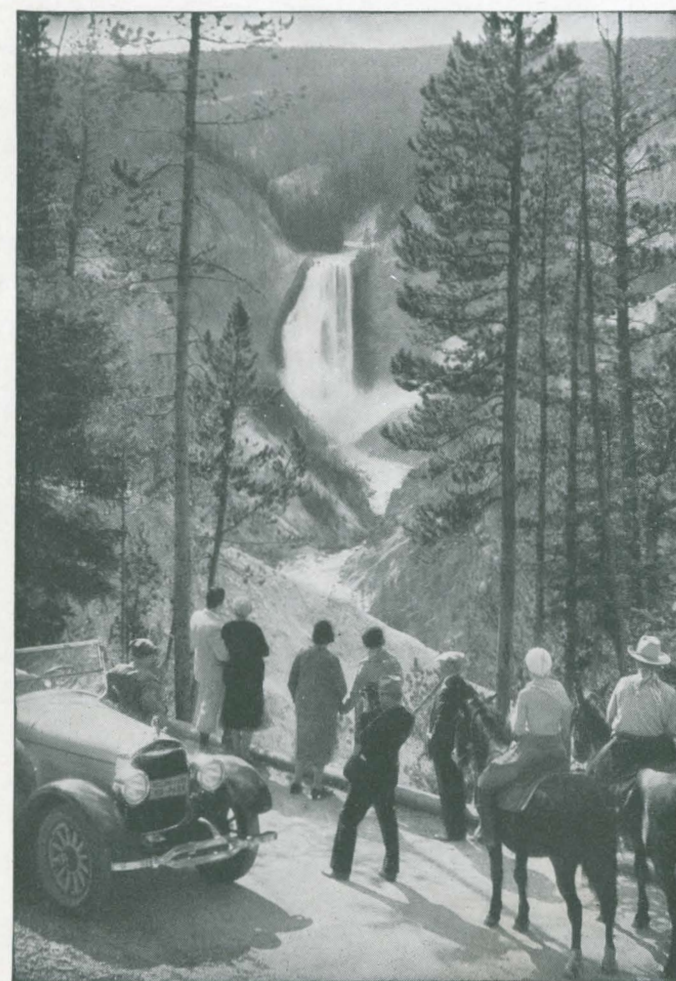
America's preeminent sight-seeing area—the Wonderland which attracts visitors from around the world—is right on the Northern Pacific transcontinental route.

Accordingly, a tour of the Park's astonishing sights is conveniently made (and of course with the greatest economy) during a transcontinental trip; or vacation tours may be economically planned to include this, together with other far-famed attractions of the Northern Pacific country.

The Yellowstone season is annually from June 20 to September 15. Through Pullman service, excursion fares and stop-over privileges are in effect.

Red Lodge HIGH Road, sensational new Montana entrance to the Park, is one of the loftiest roads in all the West. For 21 miles it skims the summit of the Beartooth Rockies, reaching an altitude of 11,000 feet. On your eastbound trip go in historic Gardiner Gateway and out over the new highway, \$48 for standard 3½-day tour via hotels.

Northern Pacific representatives will gladly make suggestions for including Yellowstone in your trip!



Great Fall and Grand Canyon, most splendid of all of Yellowstone's astonishing sights.

Scenic Route Across America

All Pacific Coast points and their Trans-Pacific connections have convenient access to the panorama of natural beauty which lies along the Northern Pacific route to and from Chicago and the East.

An advantage California travelers readily appreciate is the opportunity to see all of the Pacific Coast and the Northwest, one way, in their routing. Two National Parks—Rainier and Yellowstone—lie on this route, which for hundreds of miles follows the original trail of Lewis and Clark, and crosses the once frontier region of Kit Carson, Jim Bridger, Buffalo Bill and General Custer.

North Coast Limited schedules embrace the spectacular scenery in daylight. En route, 1,406 miles of moun-



Mountains for more than 1,000 miles.

Bedroom Cars—Privacy With Economy

Double bedroom cars, now in service the year 'round on the North Coast Limited, contain six sections and six rooms, the latter suitable for use two en suite. Each double bedroom, with sofa, berth, private toilet and washstand, can accommodate as many as two adults and two small children, but is ideal for two adults. For one person the cost is approximately the regular section rate (upper and lower) and for two or more persons, approximately two lower berth fares.



tain and prairie rivers and 28 ranges of mountains, topped by a series of 10,000-foot peaks, are jeweled by such scenic gems as Lake Pend Oreille, Cabinet Gorge, 200-mile canyon of the Clark's Fork, the impressive Continental Divide and the Dakota Bad Lands.

Other attractions are the immense Grand Coulee Dam near Spokane, the Dude Ranch Country of Montana and the Minnesota 10,000 lakes region. Connection is made in summer at Duluth with Great Lakes passenger steamers plying to lake ports as far east as Buffalo.



Special Tray Service

For Coach and Tourist-Car Passengers

North Coast Limited tray service makes it possible for coach and tourist-car passengers to fare satisfactorily for very little money. Sandwiches, beverages and desserts are obtainable at popular prices, supplementing the regular dining car service in which club breakfasts, plate luncheons and dinners are served at only 50 cents.

Tray service sandwiches are 10, 15 and 20 cents, coffee is 5 cents a cup, milk 10 cents for individual bottles and pie 10 cents per cut.

Call On Any of These Offices for Travel Information

ABERDEEN, WASH.—J. Y. Blumstrom, D. F. & P. A.; 'Phone 810.
HOQUIAM, WASH.—T. D. Sharp, Agent.
LEWISTON, IDAHO—A. F. Shirley, General Agent, Room 10, Union Station; 'Phone 1158.
LOS ANGELES, CAL.—J. C. Spracklin, G. A.; J. E. Beatty, C. F. & P. A.; D. F. Walker, T. F. & P. A., 506 Central Bldg.; 'Phone Trinity 2322.
PORTLAND, ORE.—F. J. Berry, A. G. F. & P. A.; H. G. Smith, G. A. P. D.; C. F. Duffy, C. P. A.; S. F. Fitzpatrick, T. P. A.; H. C. Charlton, P. A., 707 American Bank Bldg.; 'Phone Broadway 0423.
SAN FRANCISCO, CAL.—R. J. Tozer, G. A.; H. E. Petersen, C. P. A.; W. T. Conkling, T. P. A.; Roland Haack, C. T. A., 657 Market St.; 'Phone Sutter 1078.
SEATTLE, WASH.—N. J. Heuchan, G. A. P. D.; Orville Neer, C. P. A.; R. W. Markin, C. T. A.; M. W. Miller, P. A.; J. G.

Gibson, P. A., 1401 Fourth Ave.; Elliott 5560; C. L. Townsend, G. P. A.; Karl K. Katz, T. P. A.; L. A. Buck, T. P. A., 200 Smith Tower.
SPOKANE, WASH.—T. A. Murphy, G. A.; E. F. Baird, C. P. & T. A.; L. R. Fjellman, T. P. A.; M. L. Thomson, C. P. A., 701 Sprague Ave., cor. Wall St.; Main 5321.
TACOMA, WASH.—J. L. Norton, A. G. F. & P. A.; Leslie W. Tuttle, C. P. & T. A., 118 South 9th St.; Broadway 1121.
VANCOUVER, B. C.—W. F. Carr, G. A.; W. A. Lemon, C. P. A., 678 Howe St.; Sey. 7920.
VICTORIA, B. C.—A. C. Stickley, G. A., 912 Government St.; Empire 0222.
WALLA WALLA, WASH.—S. J. Miller, D. F. & P. A., N. P. Station; 'Phone 107.
YAKIMA, WASH.—T. M. Crawford, D. F. & P. A.; C. O. Martin, Passenger Agent, N. P. Station; 'Phone 4121.

C. L. TOWNSEND
General Passenger Agent,
Seattle, Wash.

E. E. NELSON
Passenger Traffic Manager,
St. Paul, Minn.

