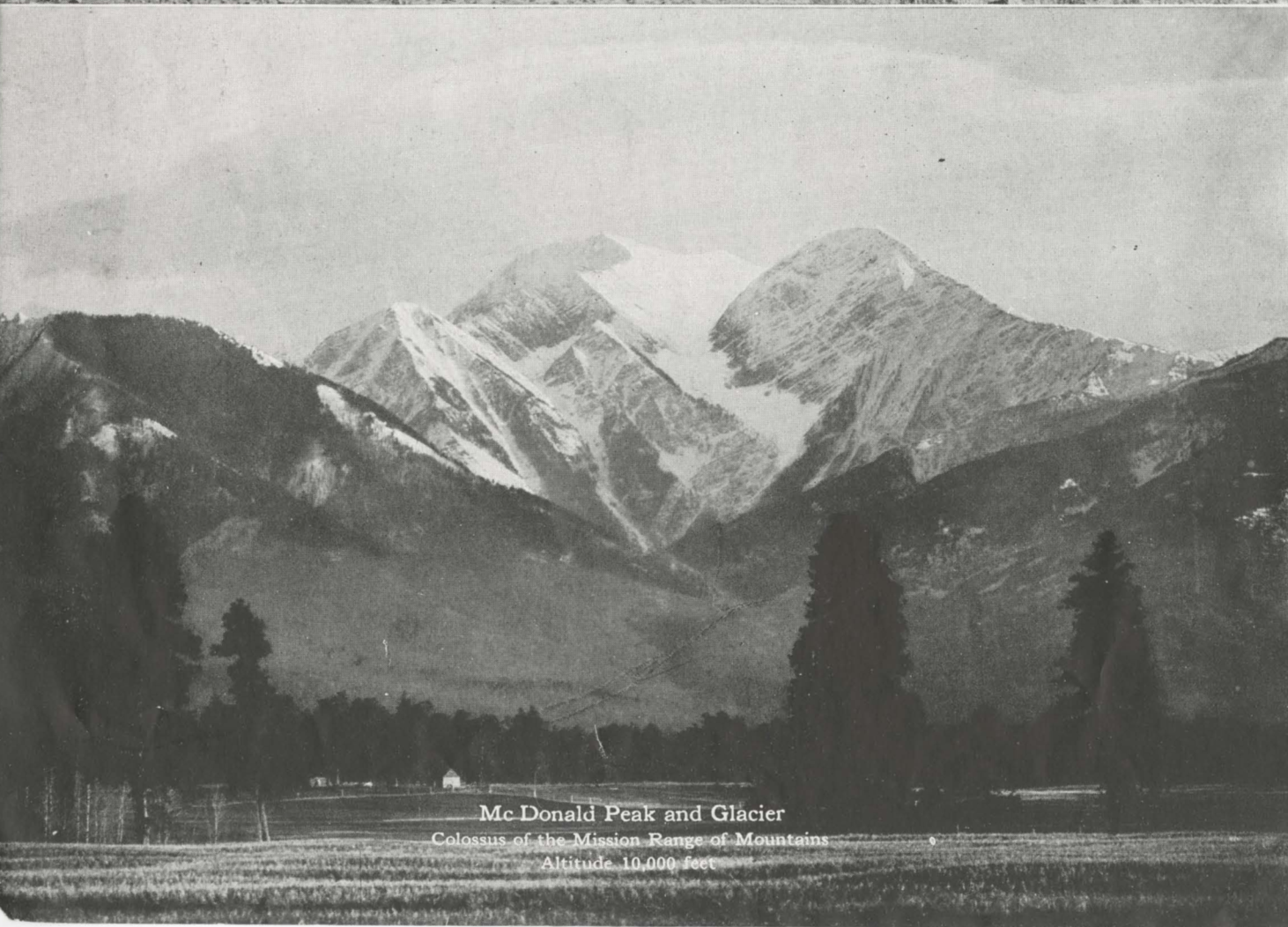
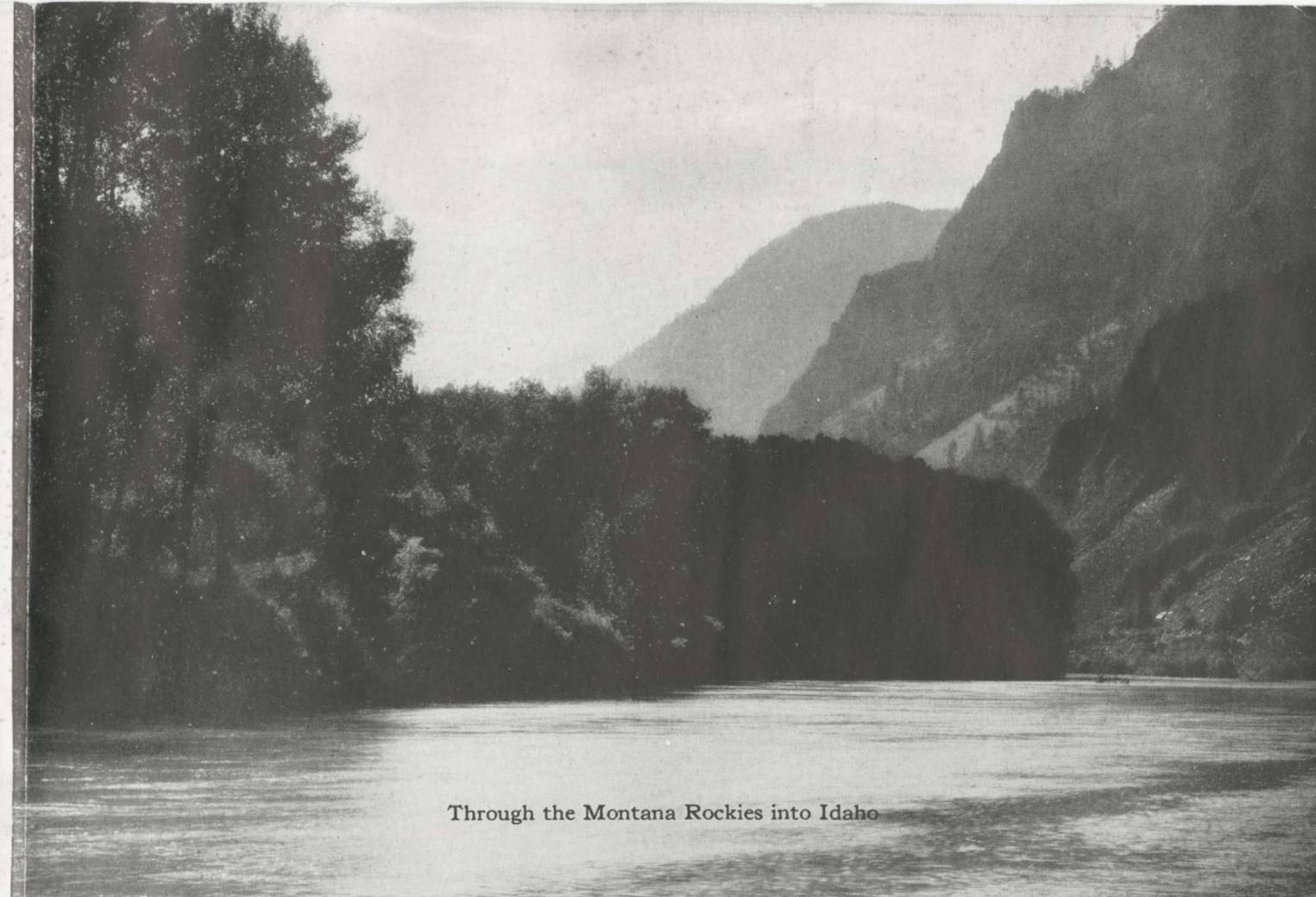


Gates of the Mountains, Helena, Montana. Spectacular Launch Trip on the Northern Pacific.



McDonald Peak and Glacier
Colossus of the Mission Range of Mountains
Altitude 10,000 feet



Through the Montana Rockies into Idaho

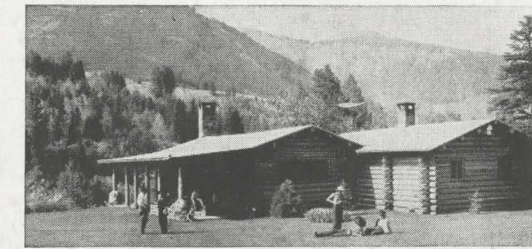


The Cascade Mountains, with Towering Beacons Like St. Helens, are Magnificent.

DELIGHTFUL
PLACES
TO STAY IN
THE MOUNTAINS



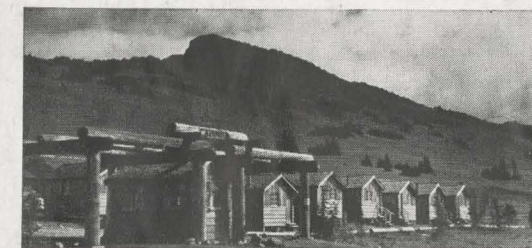
LET THE
NORTHERN PACIFIC
HELP MAKE YOUR
TRAVEL PLANS



Ranches are restful and lots of fun. There are 150 excellent ranches and mountain lodges in Montana and Wyoming Rockies served by the N. P.



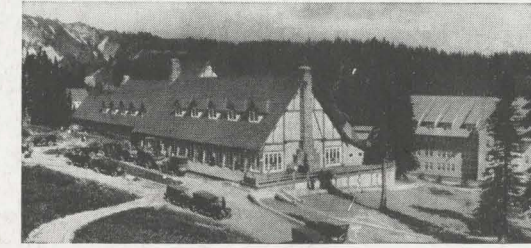
Timberline Lodge, Mt. Hood, Oregon. New, modern 6,000 feet elevation.



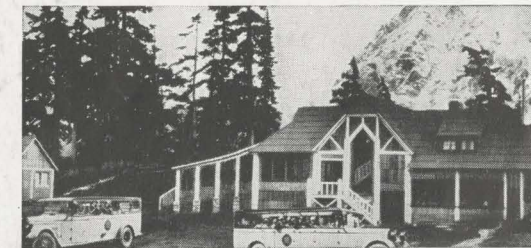
Sunrise, Rainier Park, 200 nice cottages on the sunrise side of Rainier. Located at the edge of Emmons Glacier—always cool and comfortable.



Luxurious Hotels of Yellowstone Park are most attractive to summer visitors. Excellent rooms, cuisine, dances, parties daily.



Paradise, Rainier Park, Winter and Summer, an inspiring vacation place.



Mt. Baker, Wash. Scenic Winter and Summer playground. Rustic cottages on the mountain slopes.

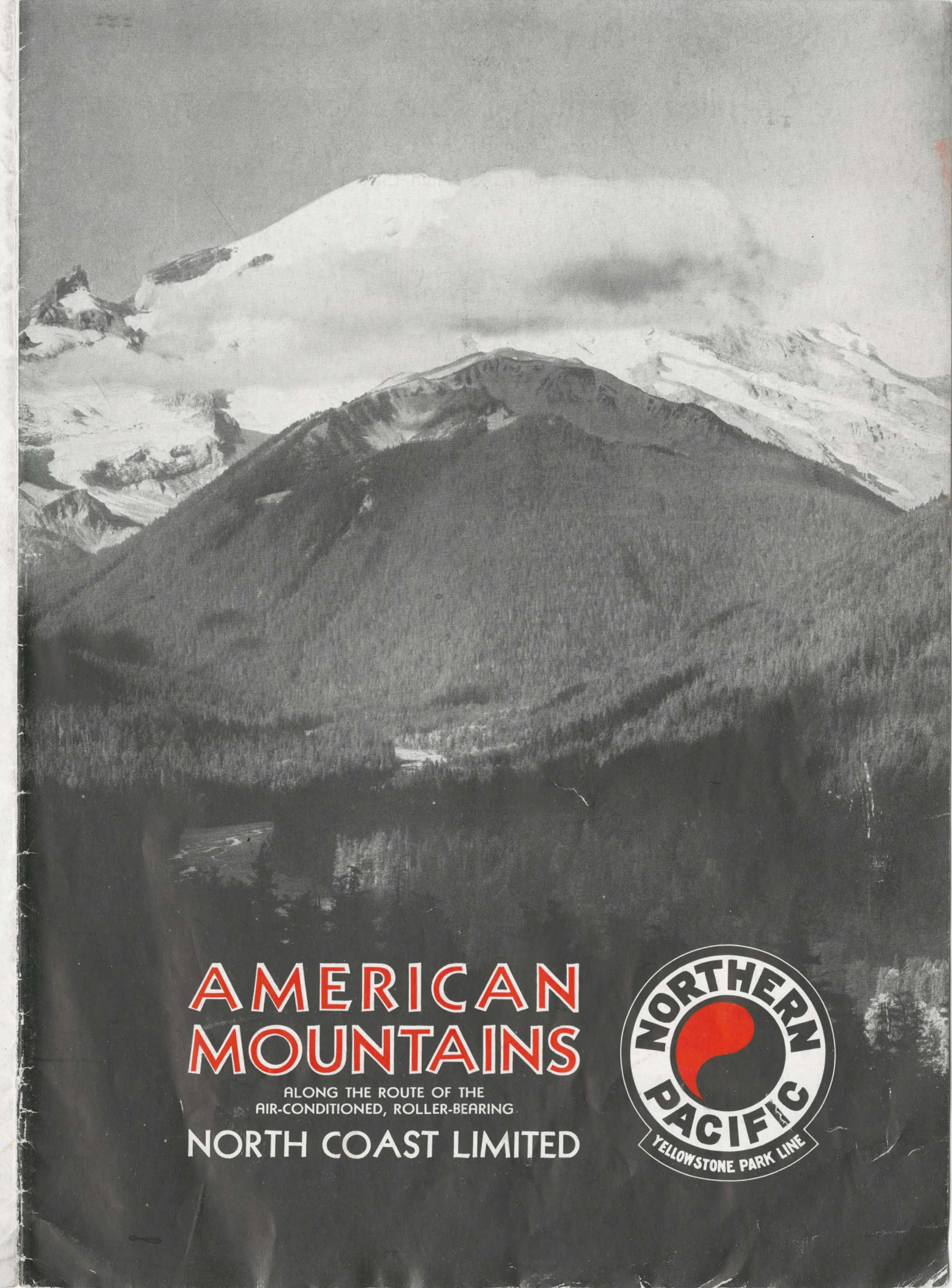
Whenever you travel West, you'll enjoy the
air-conditioned luxury train, the

NORTH COAST LIMITED

CHICAGO ■ ST. PAUL ■ MINNEAPOLIS ■ DULUTH ■ SUPERIOR ■ MINNESOTA'S 10,000 LAKES REGION ■ FARGO ■ BISMARCK ■ "ROOSEVELT PARK" ■ THE DAKOTA BAD LANDS ■ BILLINGS ■ YELLOWSTONE PARK ■ LIVINGSTON ■ BOZEMAN ■ HELENA ■ BUTTE ■ MISSOULA ■ SAND POINT ■ SPOKANE ■ YAKIMA ■ SEATTLE ■ TACOMA ■ PORTLAND ■ VANCOUVER ■ VICTORIA

E. E. NELSON, PASSENGER TRAFFIC MANAGER, ST. PAUL, MINN.

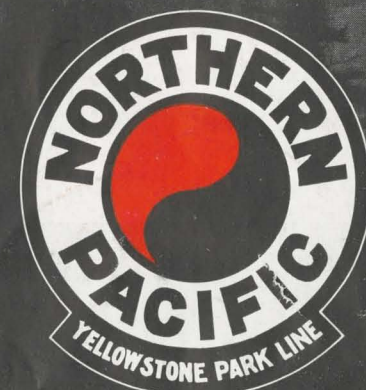
OFFICES IN MANY
PRINCIPAL CITIES
OF U. S. A. & CANADA



AMERICAN
MOUNTAINS

ALONG THE ROUTE OF THE
AIR-CONDITIONED, ROLLER-BEARING

NORTH COAST LIMITED



The Scenic Mountain Route Across America

You See Twenty-eight Ranges of Mountains
from Northern Pacific Main Line Trains

Count the Mountains!

SEE all the Northern Pacific mountains you can on your journey, for they are unsurpassed anywhere in the world! Twenty-eight ranges are visible from your train window—the same vast mountains that Lewis and Clark overcame, rich now in the lore of pioneer days in the Northwest, wearing the mantle of glamor that gold prospector, railroad builder, and rancher have put upon their mighty shoulders!

This is the "March of the Mountains" as it appears to the watchful westbound Northern Pacific traveler:

Wolf Range—South of Hysham, Montana.
Beartooth Range—Southwest of Billings.
Crazy Mountains—Reed Point to Mission, north.
Absaroka Range—South to Livingston.
Bridger Range—Bozeman to Belgrade, north.
Gallatin Range—Livingston to Bozeman, south.
Madison Range—Bozeman to Three Forks, southwest.
Tobacco Root Range—Sappington to Whitehall, south.
Gravelly Range—Whitehall to Homestake, south.
Snowcrest Range—West of Whitehall.
Continental Divide—Main Range of the Rockies, Whitehall to Silver Bow.
Bull Mountains—Whitehall to Pipestone Springs, north.
Highland Mountains—Seen from Butte, south.
Continental Divide—Seen from Helena and vicinity.
Big Belt Range—North of Townsend, Winston and Helena.
Elkhorn Range—Toston to Helena, south.
Anaconda Range—Butte to Garrison, west.
Flint Creek Range—Deer Lodge to Gold Creek, north.
Deer Lodge Mountains—Same as Flint Creek Range.
Garnet Range—Drummond to Bonner, north.
Sapphire Range—Drummond to Missoula, south.
Mission Range—Arlee to McDonald, northeast.
Coeur d'Alene Mountains—Paradise to Thompson Falls, southwest.
Bitter Root Range—Thompson Falls to Lake Pend Oreille, south.
Cabinet Mountains—Paradise to Heron, north.
Selkirk Range—Oden to Rathdrum, northwest.
Cascade Mountains—Cle Elum to Auburn, east.
Olympics—Coast cities (clear weather).

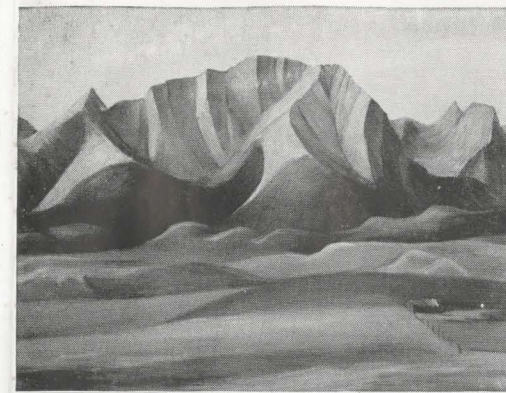
Twenty-eight Ranges of Them!

Panorama of Rockies, From Continental Divide, Butte, Mont.

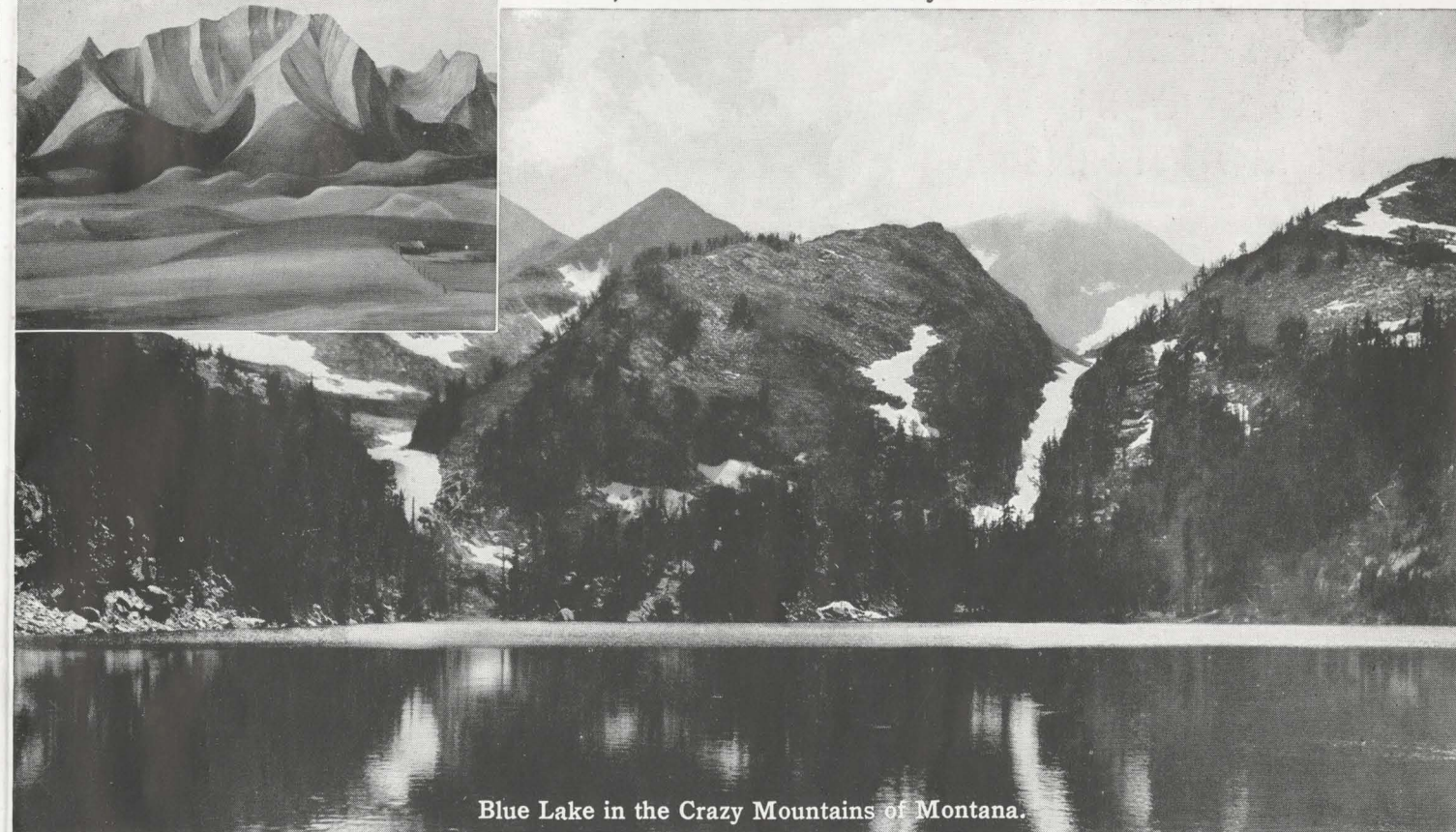
The Northern Pacific Crosses Nearby at 6,356-foot Elevation

(Homestake Pass)

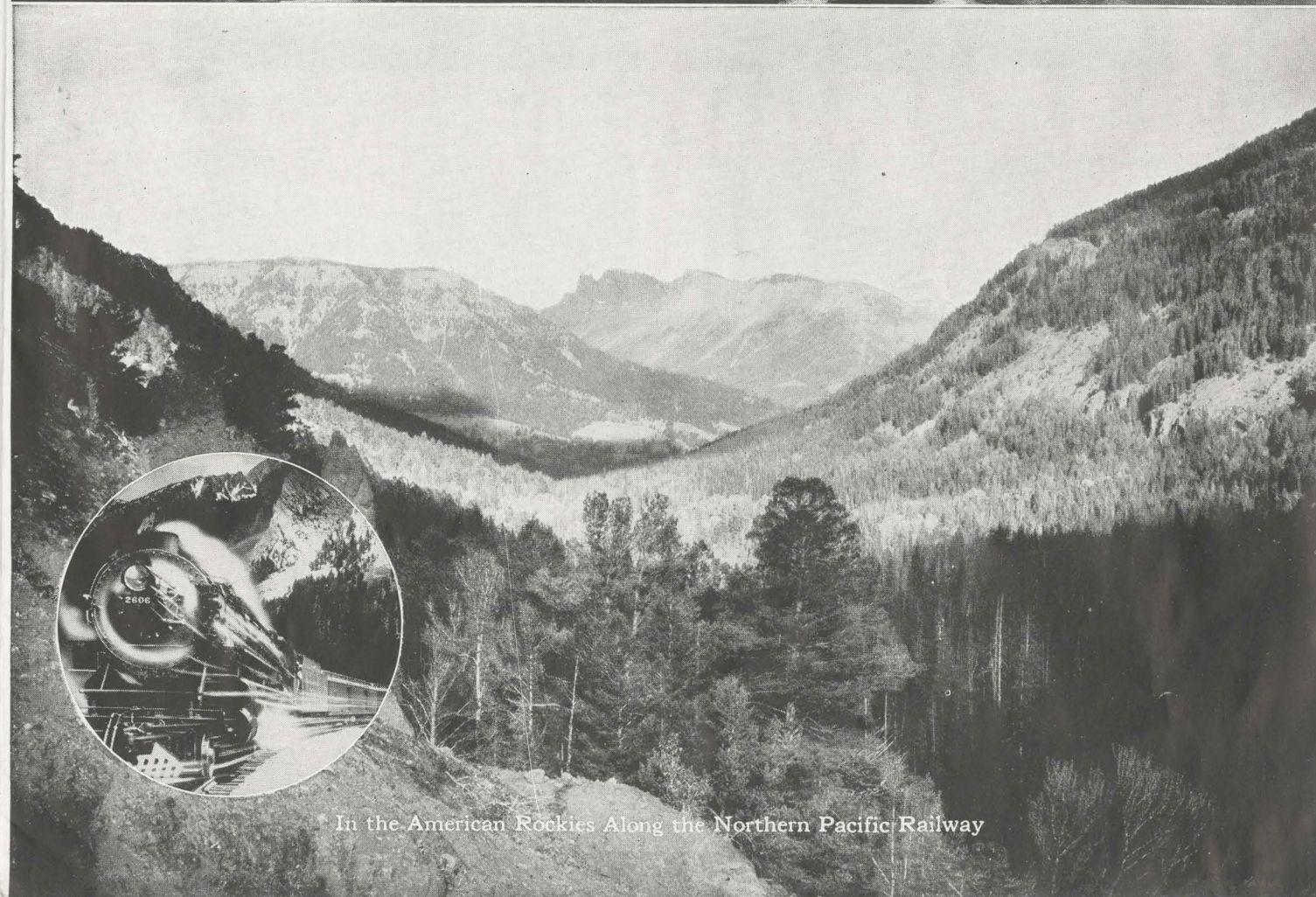
For More Than 1000 Miles—Majestic Mountain Scenery on the Main Line of the Northern Pacific Railway



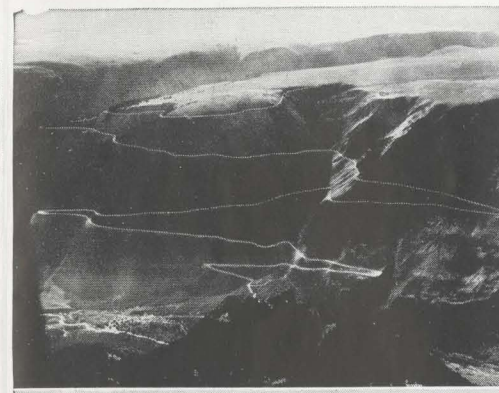
←The 10,000-foot Peaks of the Crazy Mountains—Montana



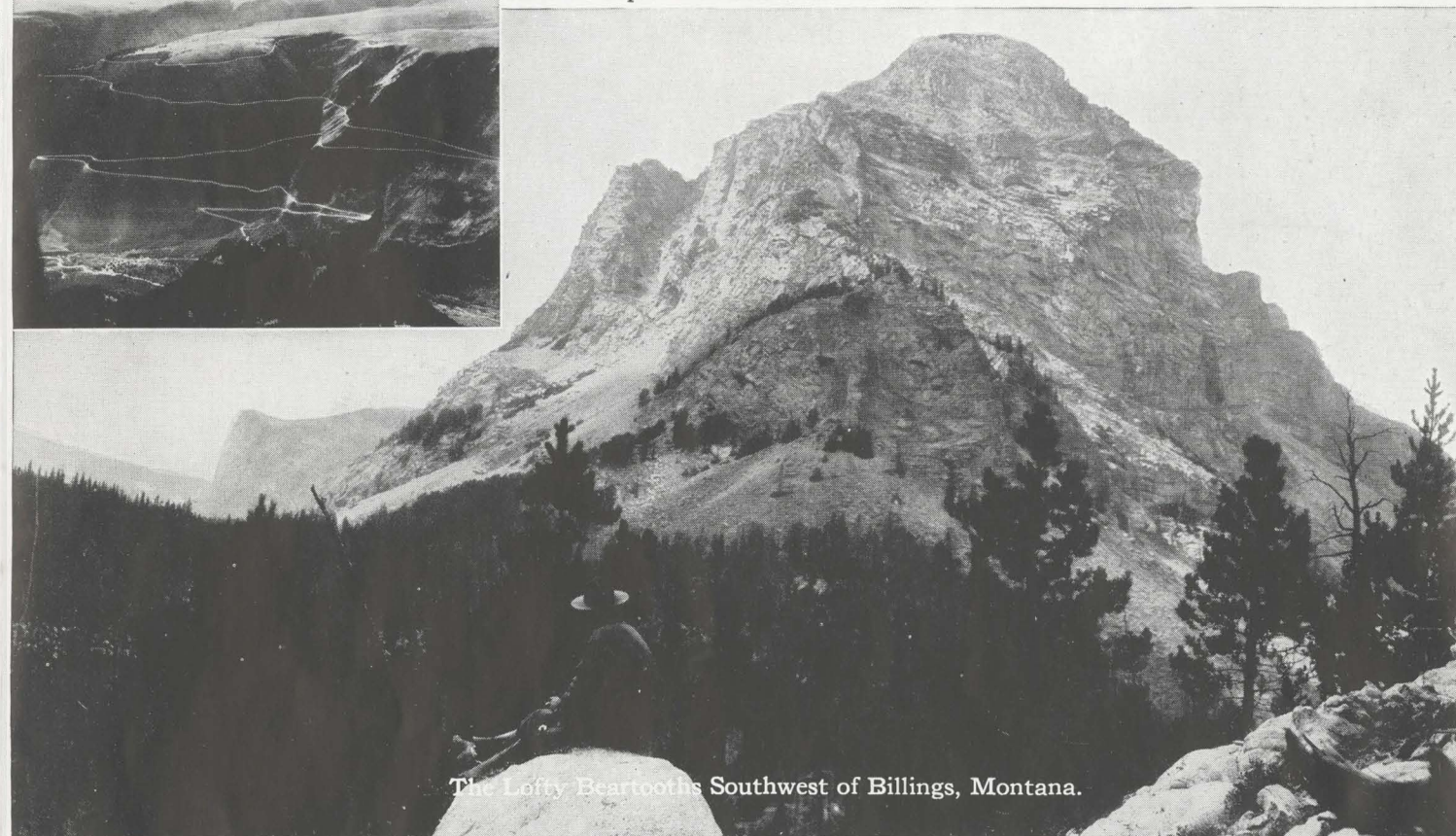
Blue Lake in the Crazy Mountains of Montana.



In the American Rockies Along the Northern Pacific Railway



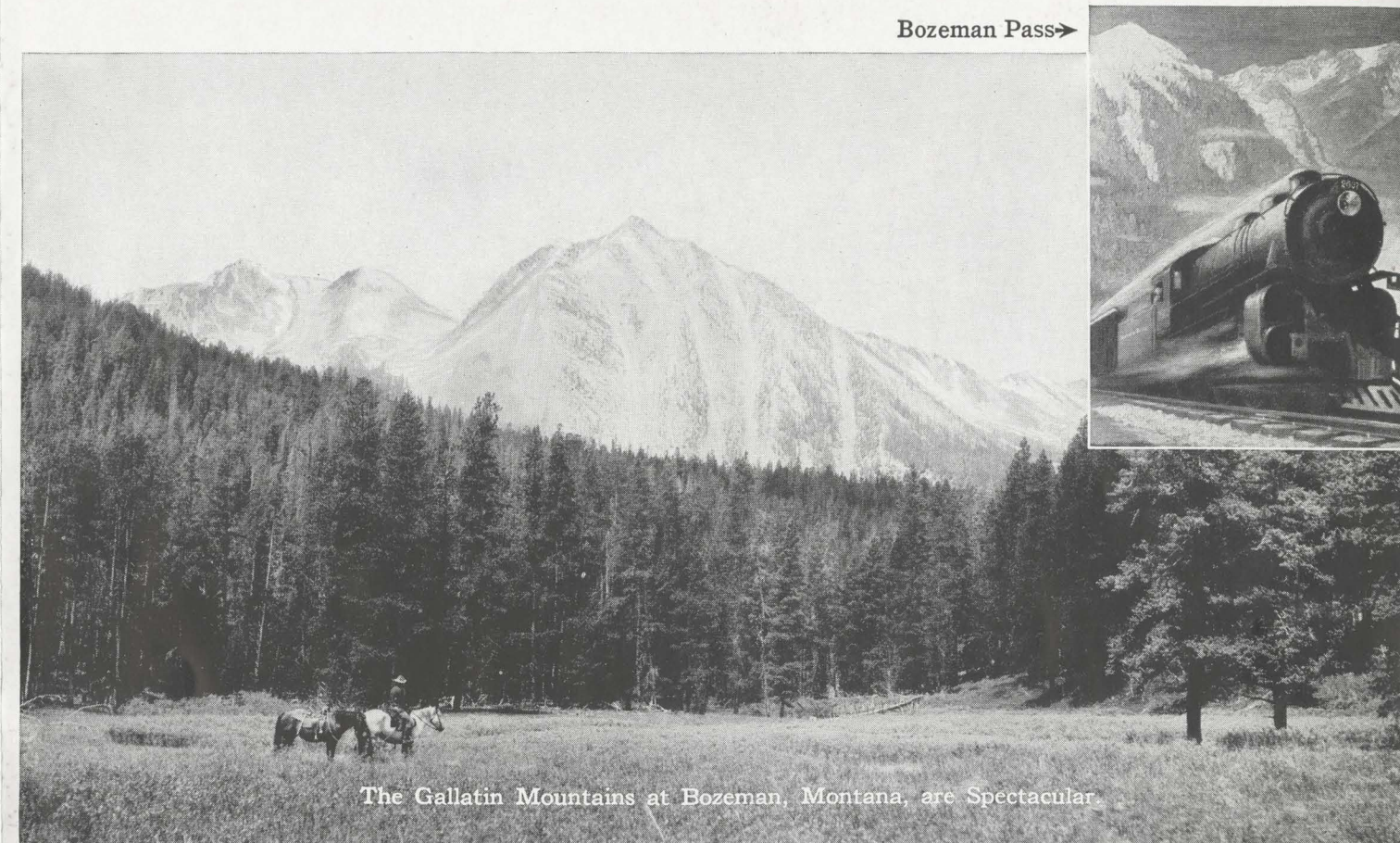
←From Red Lodge, Amazing Switchbacks Lead You to the Top of the Rockies and Yellowstone Park



The Lofly Beartooths Southwest of Billings, Montana.



The Beautiful Absarokas near Livingston, Montana.



The Gallatin Mountains at Bozeman, Montana, are Spectacular.



Montana, State of Mountains, Shows Northern Pacific Travelers Many 10,000 Foot Peaks.

Bozeman Pass→

