

A S T O N I S H I N G YELLOWSTONE





"I'll be waiting for you," seems to be the idea this Yellowstone Bear is trying to put over in pantomime up in his big pine tree.

ASTONISHING *Yellowstone* COME!

Yellowstone is so many-sided, so varied, that no description could do it justice. The purpose of this album is but to indicate by pictures the scope of the natural beauties and wonders found there. Wherever you live, Yellowstone is YOUR Park—one of the great things of this earth you should determine now not to miss.

See Pages 57, 59 and 61 for General Information.



Yellowstone's white deluge, the Lower Falls of the Yellowstone River, shows its 308-foot stature in comparison with the spectators away up on the rim.

YELLOWSTONE NATIONAL PARK



A
T
RIBUTE

BY EMERSON HOUGH, AUTHOR OF "THE COVERED WAGON"

OUR great National Parks are sections of the old American wilderness preserved practically unchanged. They are as valuable, acre for acre, as the richest farm lands. They feed the spirit, the soul, the character of America.

Of all the National Parks Yellowstone is the wildest and most universal in its appeal. There is more to see there—more different sorts of things, more natural wonders, more strange and curious things, more scope, more variety—a longer list of astonishing sights—than any half dozen of the other parks combined could offer. Daily new, always strange, ever full of change, it is the circus park, Nature's continuous Coney Island. It is the most human and the most popular of all the parks.

But Yellowstone is more, and very much more, than that, especially in its new and vastly enlarged form today. As it now is constituted, it is the noblest sweep of unspoiled and yet fully accessible mountain country to be found within or without our National Park limits. Here, indeed, you may see the ROCKIES and as you look there will arise in your soul the phrase, "As it was in the Beginning!" Happily also follows the remainder of the choral chant, "Is now, and ever shall be!" What price can you put on that? Yellowstone is at once the easiest, the most feasible, the most human of all the parks, and also the wildest and least changed. No other park, and no other mountain region within our borders, holds such numbers, or such numbers of species, of native American big game.

The bears of Yellowstone have made it famous, as has its Painted Canyon. Its vast elk herds—the last hope of that species in America—have no like anywhere in our country now. The bighorn sheep, rarest and wildest of our big game animals, still lives its old life there. The wise and busy beaver builds its dams as it always did. The antelope still may be seen—shadowy, fleet. The two species of American deer still thrive. Lastly, there still are to be seen hundreds of the noblest of all our wild animals, the bison. Who can measure the value of these native treasures? Where else can you see them? What other country, what other printed page, can teach you so much as a week's reading of Nature's page here?

And you may travel and live in perfect comfort! That is almost the most astonishing thing about Yellowstone. You may photograph a wild bear and eat a course dinner within the same hour. You may see the Canyon and geysers and the Grand Tetons and a dozen bold mountain lakes and streams and yet sleep in as good a bed as you left at home. Literally, the world has nothing like this. Other parks have one attraction—several; but none has all these. And no discomfort or danger or weariness will mar your day's delights.

I know the Yellowstone and love it all. So will you love it when you know it. And you ought to know it. That is part of your education as an American, as well as one of your American privileges. Thank God, you Americans, that Yellowstone is now and ever shall be your own! Thank God that there you still can see a part of the Old West—your own West—as it was in the Beginning!



Threshold of Yellowstone's Dramatic Tour is Gardiner Gateway spanned by the big stone arch President Theodore Roosevelt dedicated in 1903.

© DAUPHIN

GATEWAYS TO *Wonderland*

GARDINER GATEWAY

Gardiner Gateway, Montana, is the beginning of the dramatic Yellowstone tour which moves progressively among fantastic sights of the park to the splendor and climax of the Golden Grand Canyon of the Yellowstone River.

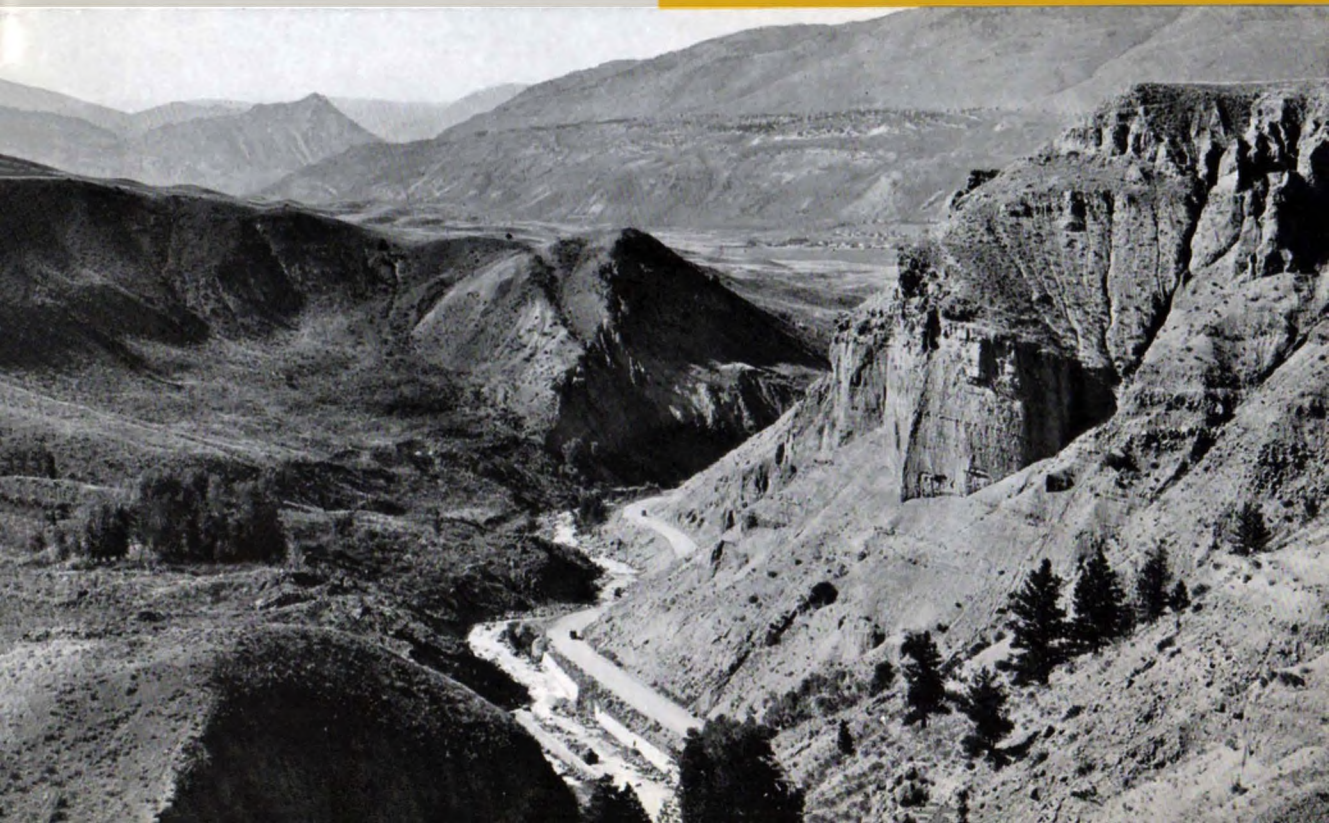
For more than half a century this gateway has been the entry point for visitors from many states and nations, for princes, potentates and presidents. It opened Yellowstone Wonderland to the world in 1883.

Direct service to Gardiner from principal points is maintained by the Northern Pacific Railway during the park season, June 20 to September 15. The route leads into the Rockies via Livingston, Montana, followed by a scenic 54-mile trip along the dancing Yellowstone river, the peaks of the Absaroka Range to the east, the majestic Gallatin Range to the west.

You'll find Gardiner a natural portal to Yellowstone's mountain walled beauties and mysteries.



Landmark to Yellowstone vacationers for more than half a century, Eagle Nest Rock towers above Gardiner Canyon Road. Canyon of the Gardiner River is penetrated by the park highway between Gardiner depot and Mammoth Hot Springs.





© LUCIER

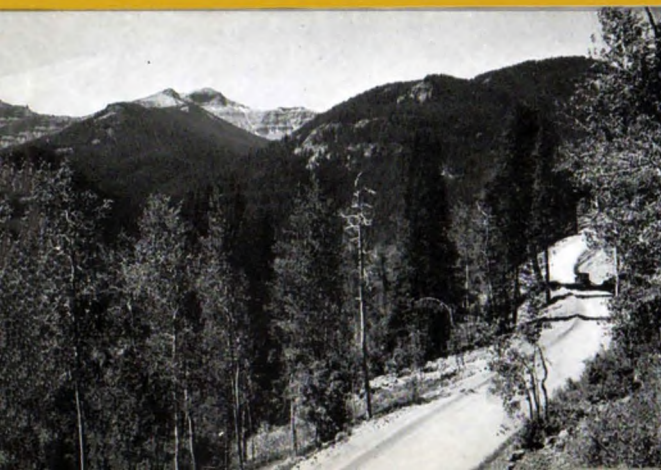
Cody Road plunges through Shoshone Canyon of the Wyoming Rockies, the Buffalo Bill country and onward to the East gateway.



Strange rock formations — men, animals and walled cities—tower in red volcanic stone above the Shoshone.



The winding ribbon of road, hewn and tunneled in granite, beckons around Shoshone Reservoir to Yellowstone beyond.



CODY GATEWAY

The Cody Road, sensational mountain highway of the West, extends 80 miles between the frontier town of Cody, Wyoming, through the heart of the untamed Buffalo Bill country to supply a magnificent gateway on the east to Yellowstone National Park.

Ascending gradually from Cody, the road plunges through sheer-walled Shoshone Canyon, skirts the shores of mountain-fringed Shoshone Reservoir, and runs for miles beside the laughing waters of Shoshone River with fantastic rock shapes towering overhead. The highway crosses the park boundary seven miles east of Sylvan Pass, crest of the Absaroka Range, and connects with the Grand Loop Highway near Lake Hotel. Ever since its opening in 1916, the Cody Road has been ranked among the most thrilling experiences of a Yellowstone tour.

Cody is situated on the Burlington Route, and has through sleeping car service over that railroad to and from Chicago, Missouri River points and Denver, as well as through sleeping car service to and from Chicago via Billings and the Northern Pacific transcontinental line.

Up over the lofty Absarokas, this lone highway challenges the wilderness.



Amazing switchbacks of the Red Lodge Highway traverse fifteen miles to gain a mile in altitude above Rock Creek Canyon.



Rustic Cooke Entrance Checking Station in picturesque surroundings guards the new Red Lodge entrance.



RED LODGE HIGHROAD NEWEST GATEWAY TO YELLOWSTONE

Red Lodge HIGHroad, loftiest of all Yellowstone Park approaches, is the newest attraction of the Yellowstone tour. Opening to railroad travelers with the 1937 season, it has added to Yellowstone wonders the grandeur of "sky-line" alpine panoramas.

Altimeter readings show this road to be one of the highest in all the West. For approximately 21 miles it skims the top of the Beartooth Rockies at an altitude of more than 9,000 feet. The pinnacle of 11,000 feet is reached at one point and mile after mile its altitude hovers around the 10,000-foot mark. Two hundred fifty miles of mountain peaks can be seen with half a turn of the head.

Red Lodge, Montana, on the Northern Pacific, is the starting point of this pre-eminent highway. Yellowstone sightseeing cars connect there with through Northern Pacific sleeping cars from Chicago. For a thrill drive be sure to go either in or out Red Lodge on your Yellowstone tour!

Pilot and Index Peaks, landmarks of the Red Lodge country since Jim Bridger's time a century ago, rise nobly in the highway panorama.



Scenic riches as embodied south of Bozeman in the Canyon of the Gallatin River, Montana, named for Albert Gallatin, Thomas Jefferson's secretary of the treasury.



BOZEMAN GATEWAY— GALLATIN CANYON ROUTE

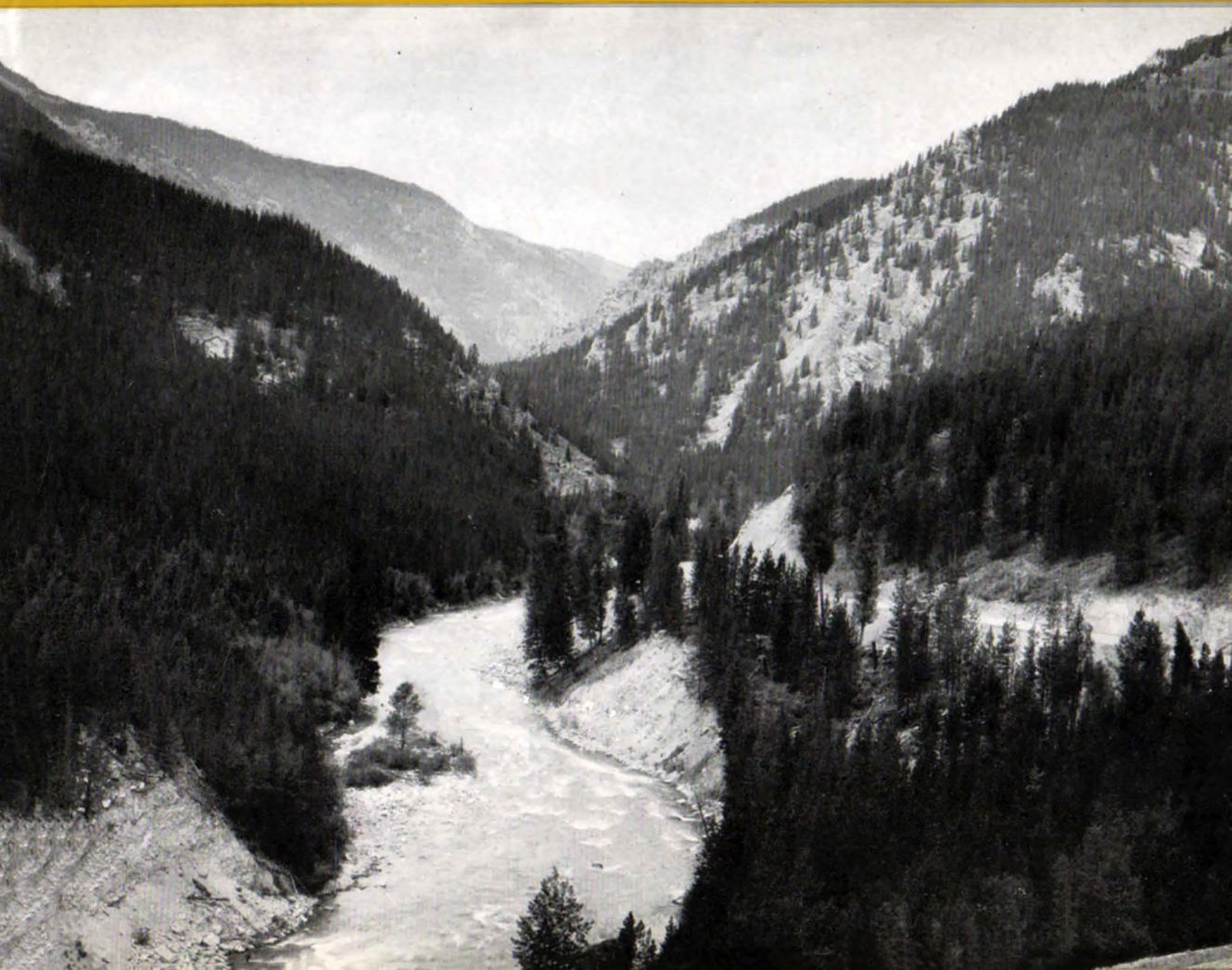
Bozeman Gateway to or from Yellowstone is one of Montana's most scenic drives. Yellowstone Park sight-seeing cars carry passengers right from the Northern Pacific depot in Bozeman, through the business and residential districts, past the Montana State College and Experimental Farms and through the magnificent Gallatin Valley.

On the way are the Spanish and Gallatin Range, the lofty Taylor Peaks, Castle Rock, Sheep Rock, Seven Falls—the beautiful Madison Forest, fishing camps and old mountain lodges, blue lakes, crystal white cascades and many chattering mountain streams.

Ninety-three miles from Bozeman the highway enters the park through West Yellowstone and 29 miles farther on reaches Old Faithful Inn for the encircling drive among Yellowstone's astonishing sights. In or out Bozeman, Northern Pacific transcontinental service is available.

Spanish Peaks region has been designated "Primitive Area" by the Federal Government; its scenery and wild game declared inviolable.

Gallatin Canyon and highway present a scene of rugged, untamable wilderness mile after mile.





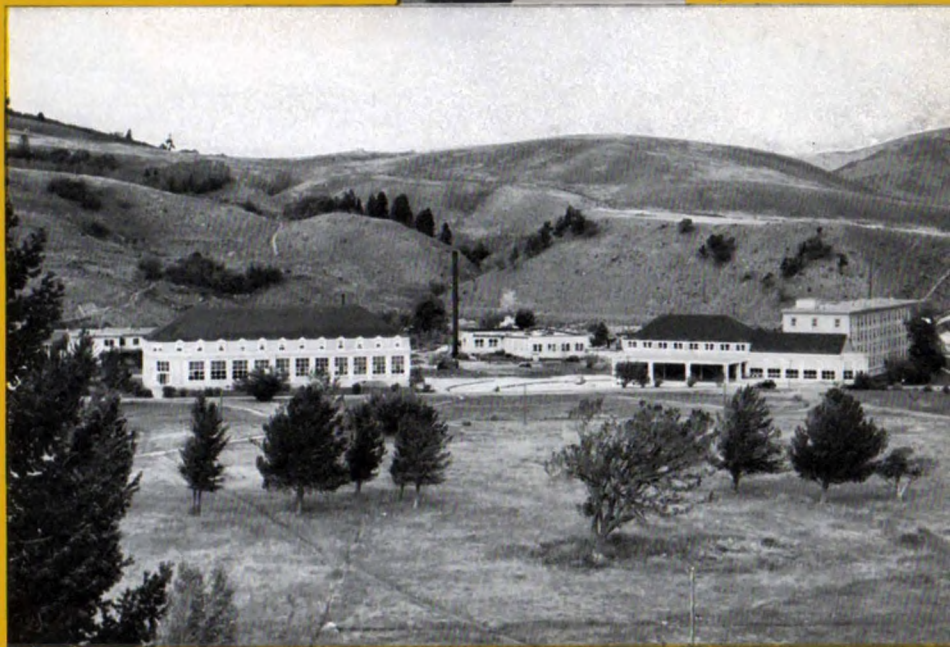
"Nature's big frosted cake" as it looks at Minerva Terrace of the colored Mammoth Hot Springs. Whose birthday is it?

IN AND ABOUT *Mammoth*

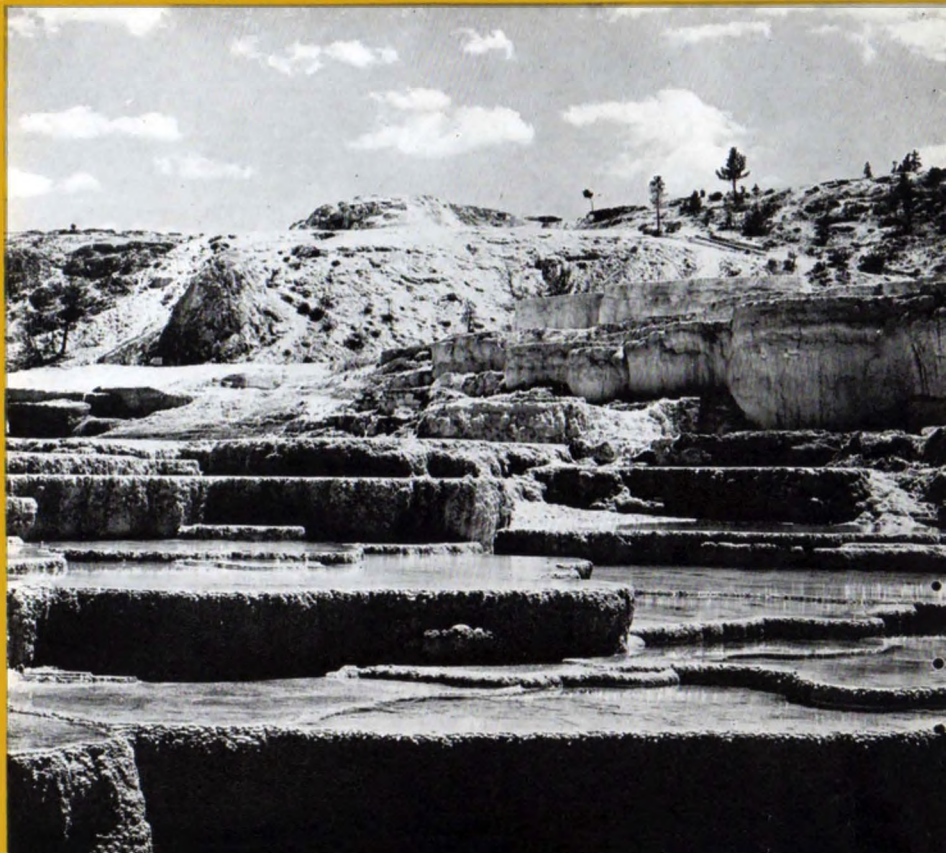


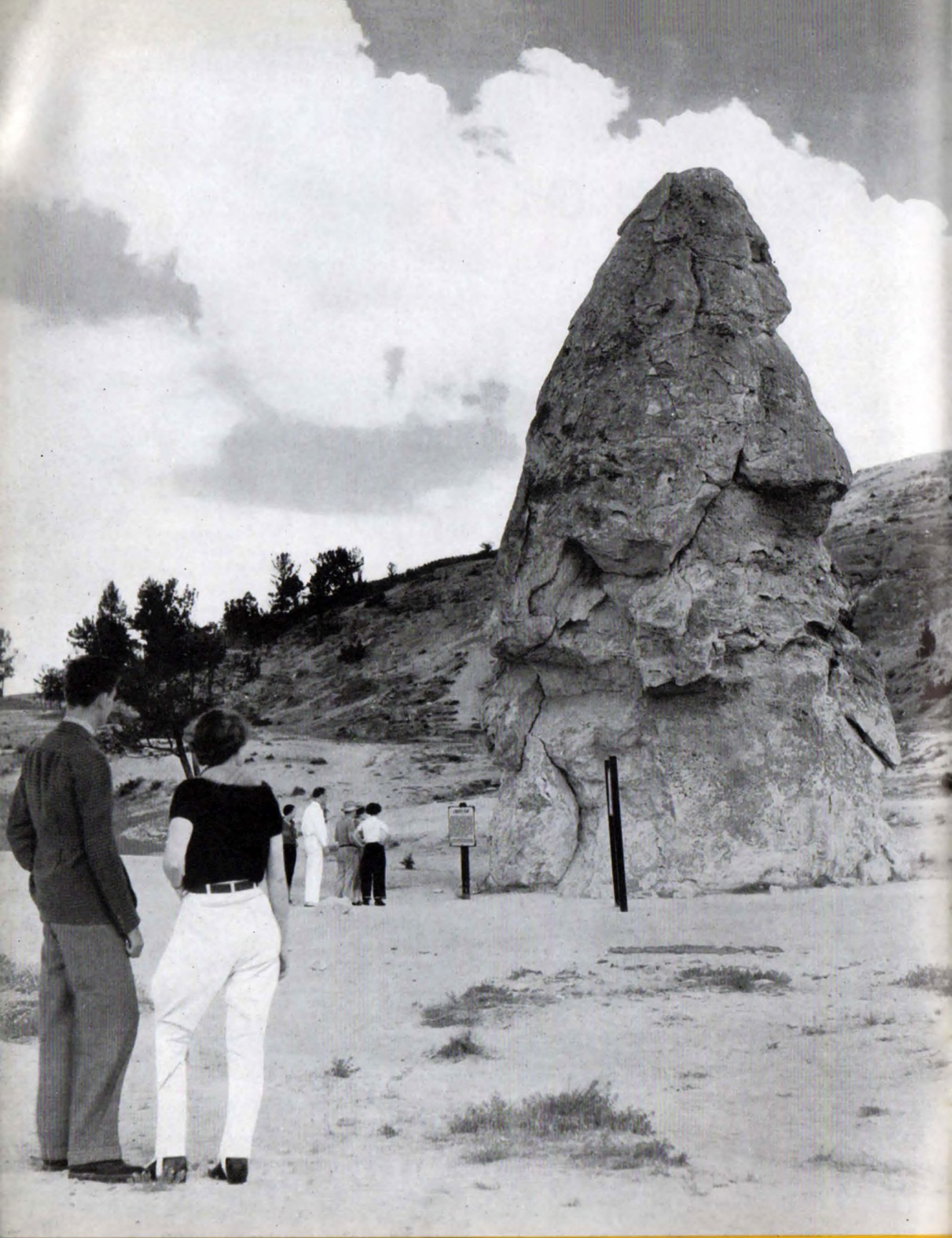
*Hot
Springs*

New 3-plan hotel buildings
at Mammoth Hot Springs
which provide regular ho-
tel service, standard cabins
and first-class cottages.



Nature has devoted endless
centuries to the preparation
of this sight—Hymen Ter-
race and its imprisoned
pools at Mammoth Hot
Springs.





Natural monument of travertine — Liberty Cap at Mammoth Hot Springs, built by an extinct boiling spring which flowed from its top.



Mammoth Hot Springs on the slope of Terrace Mountain as seen from the veranda of Mammoth Lodge.

"Is it really hot?" A sure test is by touch, but be carefull





© HAYNES

Nine miles beyond Gardiner, the park highway beckons into the Rockies through Golden Gate.



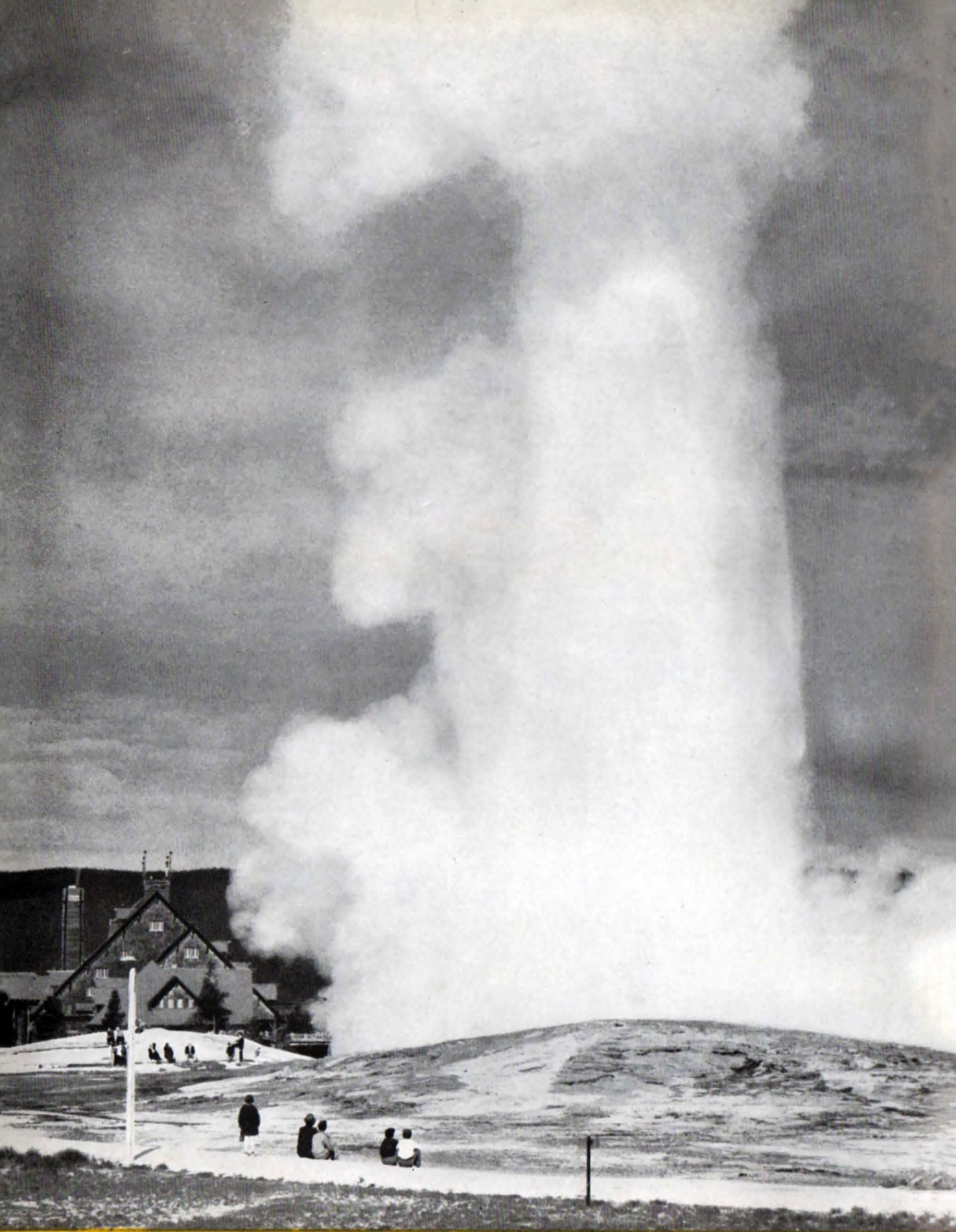
"Burning Mountains" was the early Indian name for Yellowstone and Roaring Mountain, below, is one of the many phenomena which substantiates it.

© HAYNES

Obsidian Cliff, a mountain of black volcanic glass; material much sought by Indians for arrowheads and knives.



Get your rabbit's foot! Here are Hoodoo Rocks bordering the highway between Mammoth Hot Springs and Old Faithful Geyser.



Old Faithful Geyser, most famous in the world, hurls aloft tons of boiling water often reaching a height of fourteen stories.

IN AND ABOUT *Old Faithful*



A corner of hospitable Old Faithful Inn, sometimes spoken of as "America's glorified log cabin."



Below:
The Inn as approached by Yellowstone sightseeing autos during the park tour.





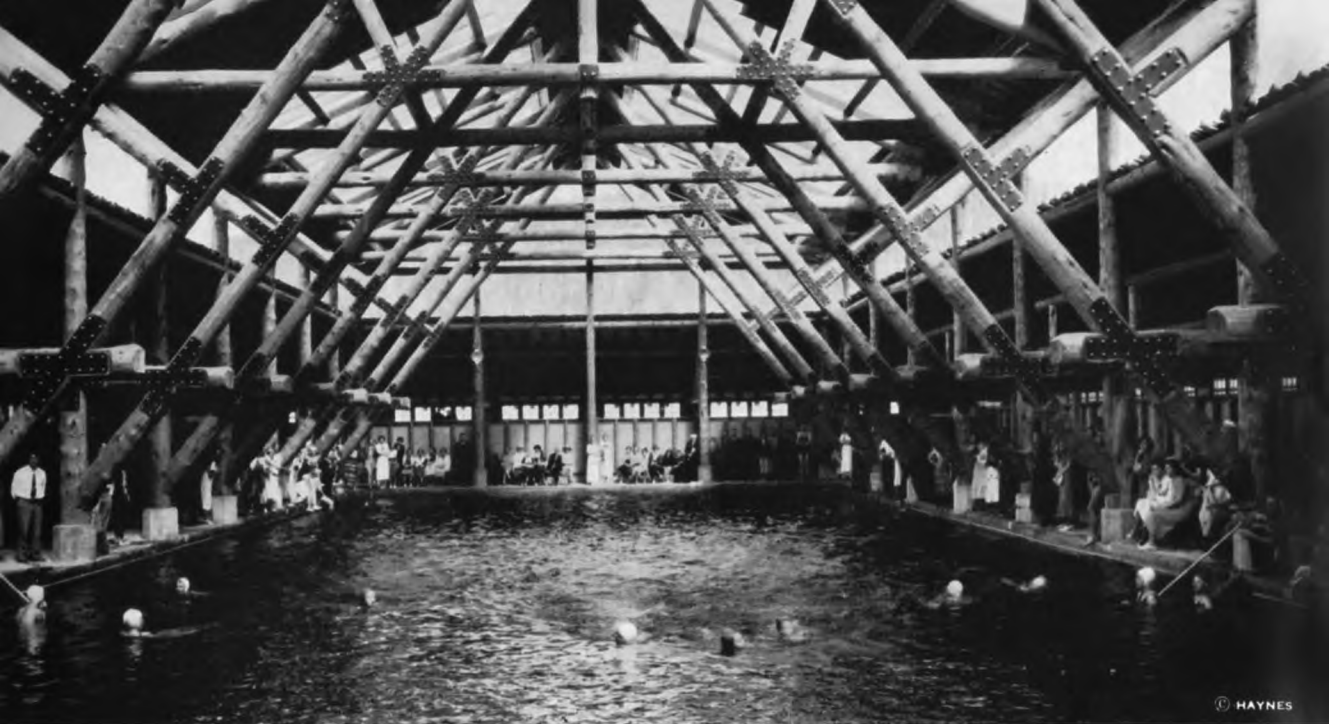
You can stand right in your sightseeing coach and look down the foaming gorge of the Firehole River, only one of many mountain streams seen.



Grotto Geyser formation, above, looks from this angle like some strange monster peering above ground.



Punch Bowl Spring contributes its own particular kind of "kick" to Yellowstone sight-seeing. There are some 3,000 other hot springs and geysers.



HAYNES



World novelty among natatoriums is the Geyser water swimming pool near Old Faithful Inn.

Geyser sightseeing is a varied adventure. No two geysers are exactly alike in size, type, interval or duration of eruption.

© HAYNES



GIANT GEYSER



HOT SPRINGS—GIBBON CANYON



PAINT POTS



THE BLACK GROWLER



MINUTEMAN GEYSER



UPPER GEYSER BASIN



BEH HIVE GEYSER



Yellowstone's role as the "mother" of important American rivers intrigues vacationists throughout the park tour.

"In the chimney corner" in the great rustic lobby of Old Faithful Inn. A favorite gathering place after the activities of the day.



Horses and guides provide opportunity for scenic trail and geyser basin exploration at Old Faithful.



Recreation hall at Old Faithful Lodge showing party in progress. One of the Park's most popular evening recreation spots.



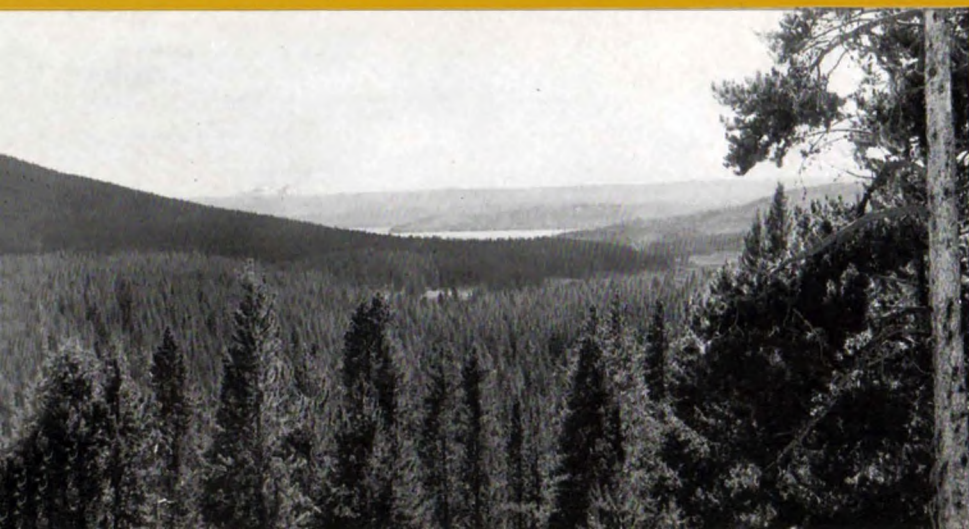


Fishing Bridge Museum looks out over the mountain-rimmed expanse of Yellowstone Lake. Other museums throughout the park afford visitors opportunity for study of this magic region.

IN AND ABOUT *Yellowstone*



Lake



Lofty Lake Yellowstone, 7,731 feet above sea level, which once flowed to the Pacific ocean, is now flowing for the second time to the Atlantic.

Lakes like Shoshone in the deep pine forests of the park are the trout fisher's idea of heaven. The Teton Mountains are visible in the distance.



D. HAYNES



Above—Sightseeing headquarters in Yellowstone Lake locality is big, colonial-style Lake Hotel.

Below—Dining beside the broad observation windows of Lake Hotel satisfies the eye as well as the palate.

Isa Lake, fickle bit of water
seen at the summit of the
Continental Divide, flows
sometimes to the Atlantic,
sometimes to the Pacific.



Party getting ready to leave
Lake Hotel dock for a fish-
ing trip and fish fry at Stev-
enson Island in Yellowstone
Lake.



Fishing Cone, a hot spring
in Yellowstone Lake, where
it is possible but not per-
missible to cook a trout
right on the line.





© HAYNES NIS

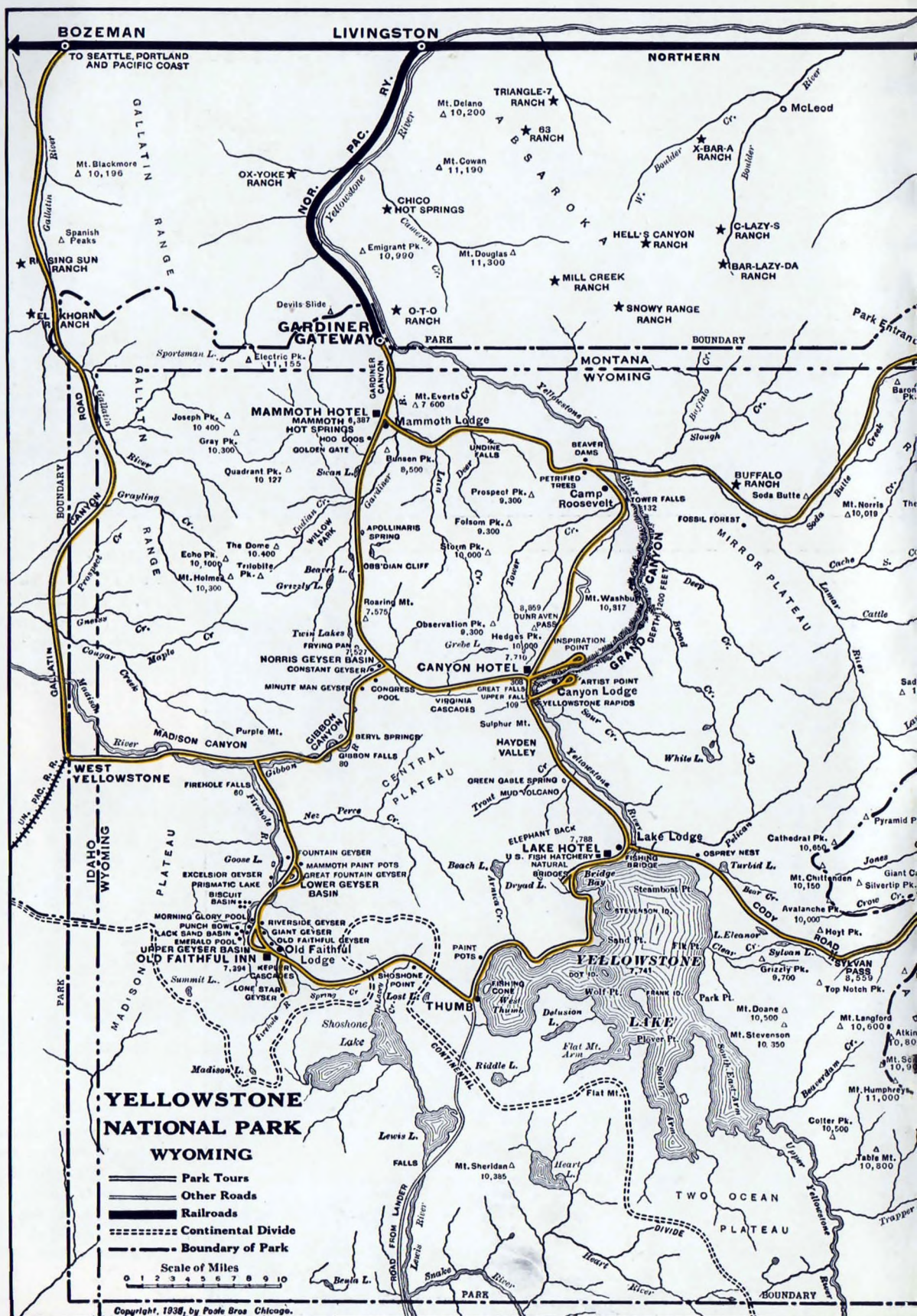
Above—Lake Lodge nestles in groves of cool, scented pines on the lake shore.
Below—Yellowstone Lake trout hatchery which has a capacity of 30,000,000
eggs and claims to be the largest trout hatchery in the world.

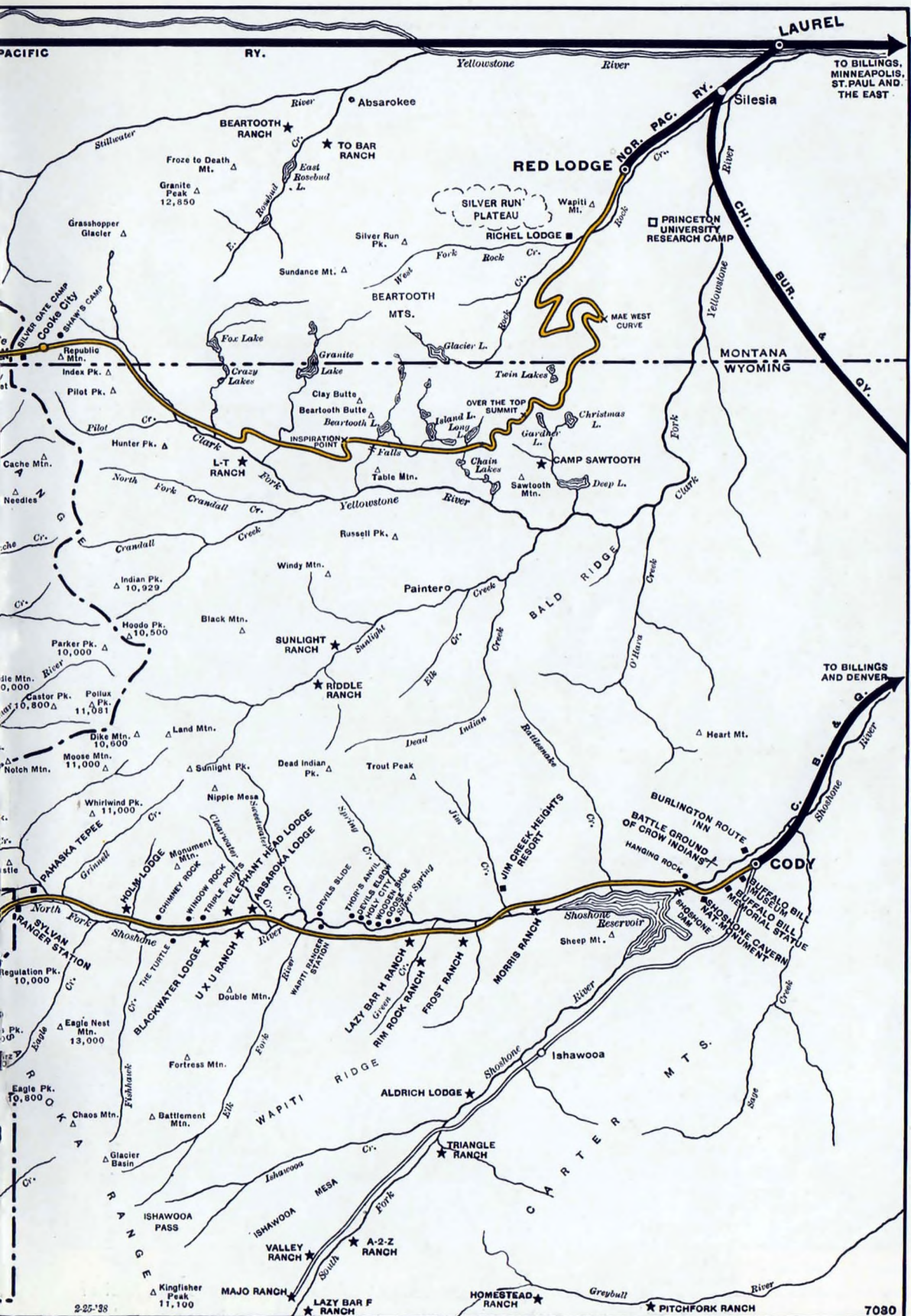


Spectators advisedly view from a distance this geyser, known as Mud Volcano, which indulges generously in mud-slinging.



No license is required for fishing in the park and the limit is 15 pounds, plus one fish, not to exceed a total of 10 fish a day, unless modified.





TO BILLINGS,
MINNEAPOLIS,
ST. PAUL AND
THE EAST

TO BILLINGS
AND DENVER



Nature's masterpiece—the Grand Canyon of the Yellowstone, "pot of gold" at the end of the rainbow and a highspot in the park tour.

© DAUPHIN

IN AND ABOUT *Grand Canyon*



© DAUPHIN



Upper Gorge of the Yellowstone River, looking toward Chittenden Bridge, near Canyon Hotel and Lodge.

Northern Pacific trademark as carved by a meandering mountain stream near the park highway between Yellowstone Lake and Grand Canyon.



A mighty thrill is to view the 308-foot Lower Falls of the Yellowstone from this observation site on the rim.



A view of the entrance to immense Canyon Hotel which measures almost one mile around.

On the verge of glory—Yellowstone travelers can view the dazzling Grand Canyon right from their sightseeing cars.





Upper Falls of the Yellowstone River, although not as famous as the Lower Falls, makes its own scenic bid for fame as this view shows.

Canyon Hotel, on the plateau above the west rim of Grand Canyon, commands the entire region and measures almost one mile around.



HAYNES

Evenings are festive at Canyon Hotel and the other hotels of Yellowstone, while outside the night winds whisper in the pines.



Sightseers come and go at Canyon Lodge, on the east rim of the Canyon within sight and sound of the upper and lower falls.



HAYNES



A mile and a quarter above sea level, near Camp Roosevelt, is feudal Tower Fall, 132 feet high

Inset — Petrified Tree near Tower Fall, one of many examples of petrification found in the park area.

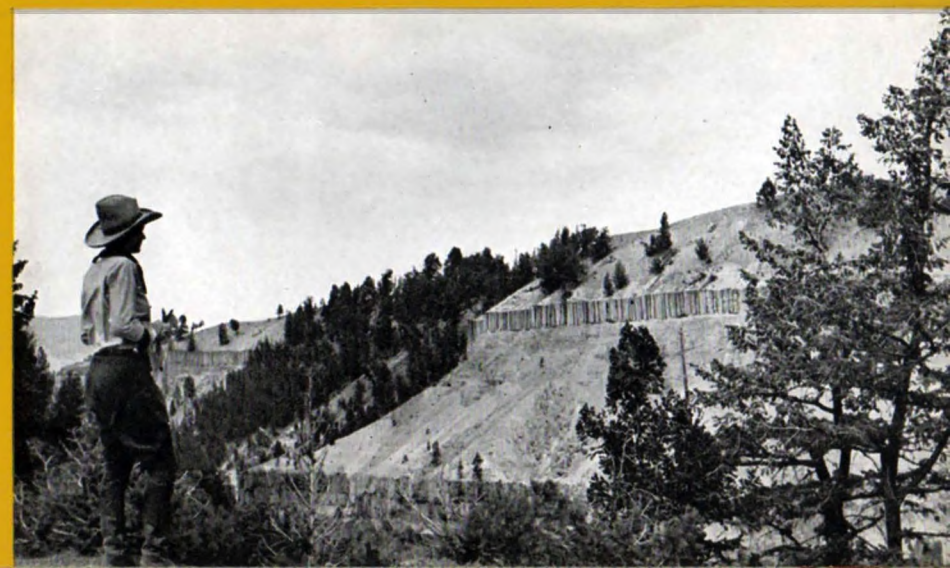
One of the world's most scenic saddle trails leads along Canyon Rim. Park Rangers point out the sights.



Hikers follow Uncle Toms trail down into the depths of the Grand Canyon to the foot of the Lower Falls.



Nature's "fortifications," the stockades of the Grand Canyon, present this formidable aspect near Tower Fall.





Cunning cub bear teetering comically in the pine tops perform continuously throughout the park.

1 WILD ANIMAL LIFE IN *Yellowstone*

A glimpse of a noble moose
rewards cautious game
stalkers on wilderness trails.



An interesting gathering of
a grizzly family intent on
the evening meal. These
bears are wild and belli-
gerent and spectators are
advised to keep at a safe
distance.





A newcomer in a world of wonder who is all ears to hear you are going to spend your next vacation in Yellowstone. Park deer number more than 800.



Just a "reception committee" representing the herd of more than 800 deer which roam the mountain meadows.

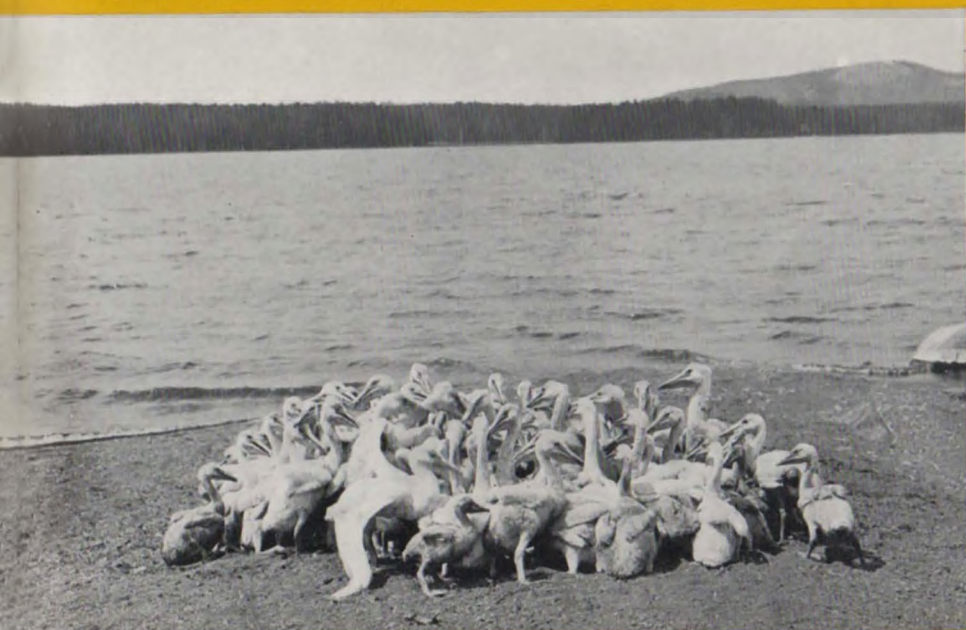
King (or kings) of the crags —bighorn mountain sheep—are readily sighted from Mount Washburn, above Grand Canyon.



Above—"This is a stick-up!" But the bandit bear only asks provender.
Below—The bear feeding grounds near Grand Canyon attract hundreds of Park visitors nightly.



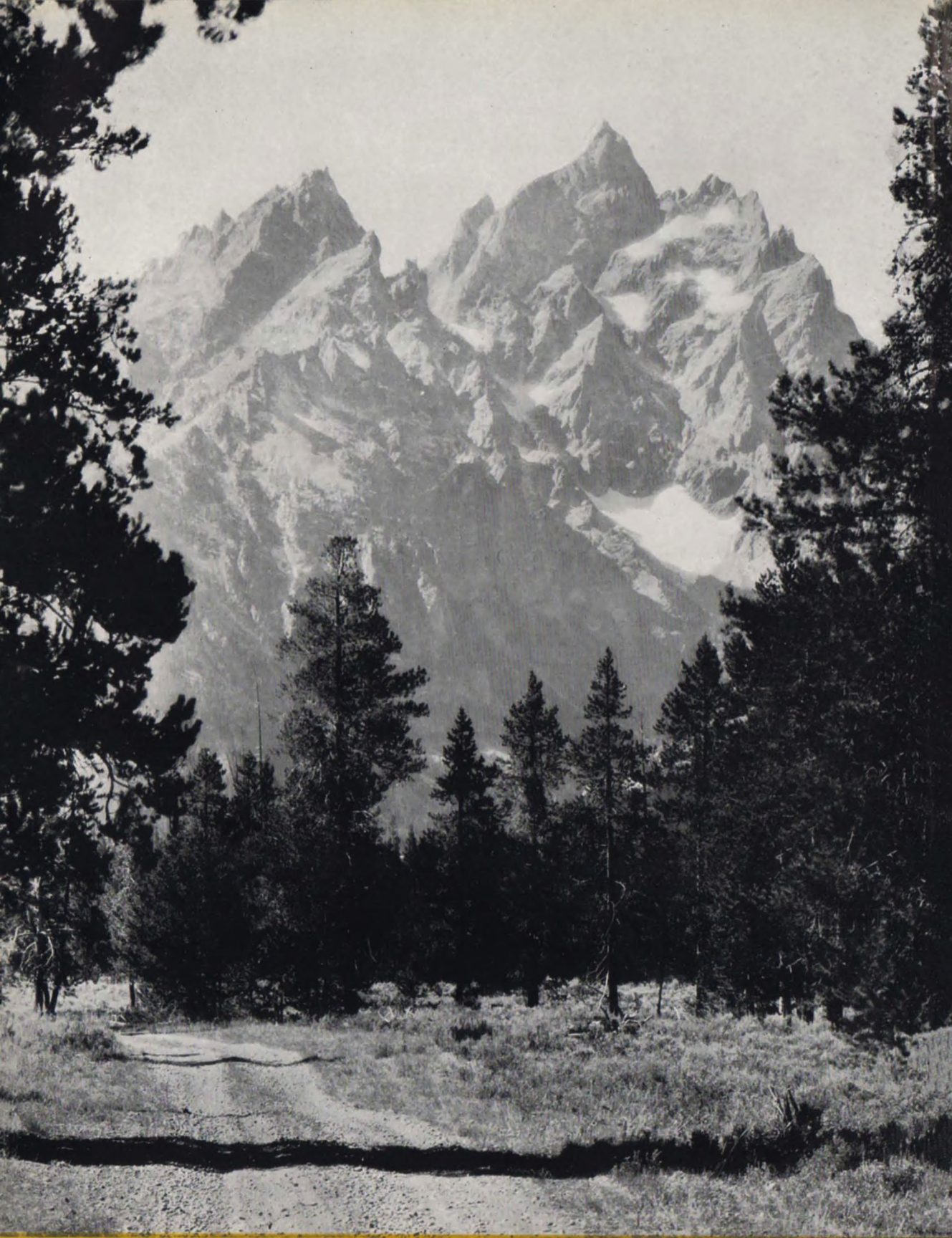
Monarchs of the Plains hold sway at the Antelope Creek Pasture near Tower Fall.



A pelican huddle at Yellowstone Lake doesn't necessarily indicate the football season.

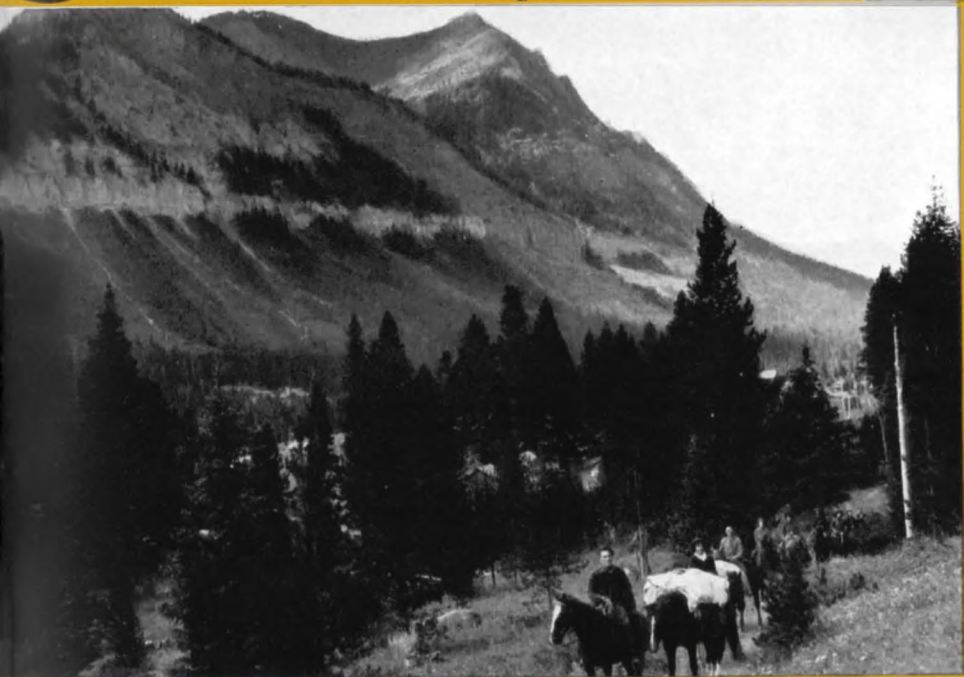


Antelope make the meadows near Gardiner Gateway their favorite feeding grounds.



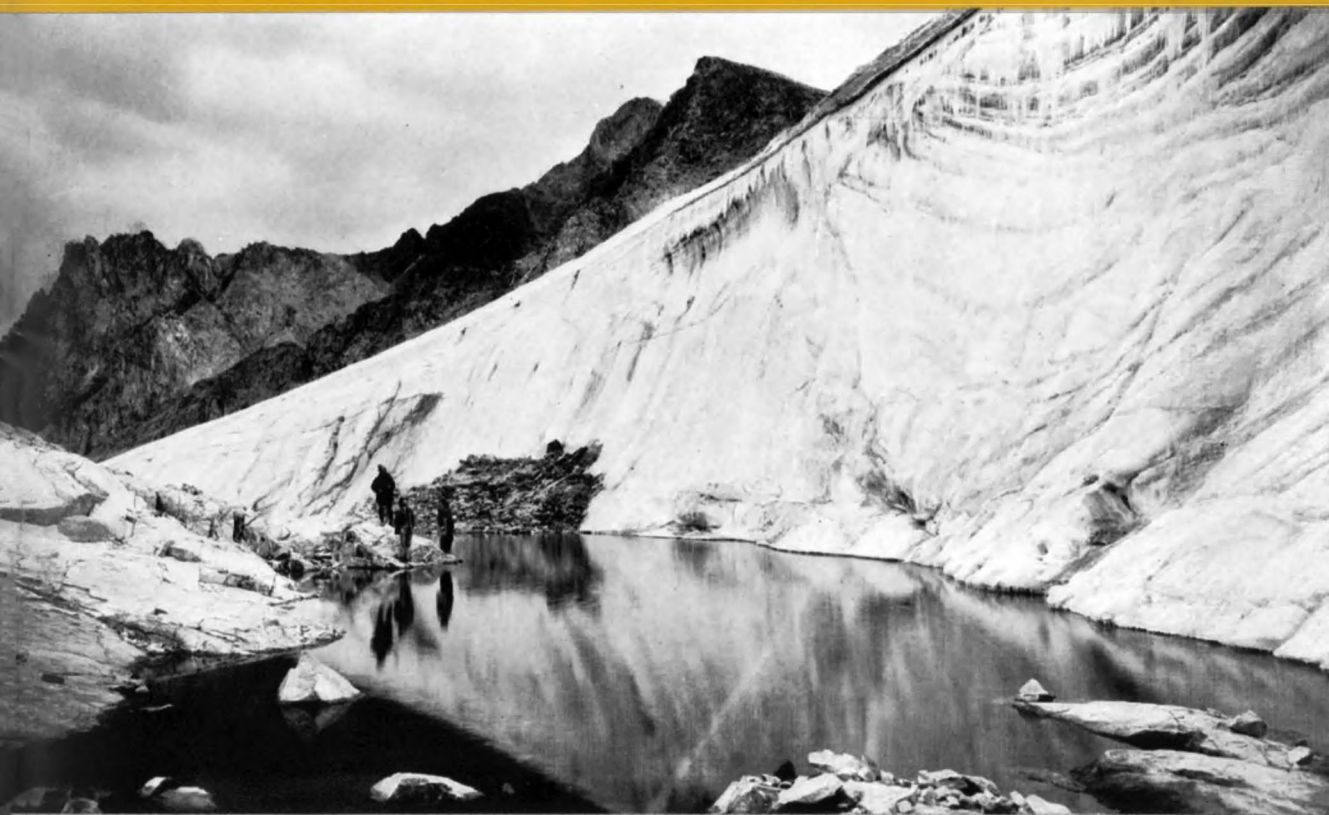
Grand Teton National Park, Wyoming, with its Grand Teton Mountains is a popular sidetrip from Old Faithful. Cost \$16.75 to \$19.00.

SIDETRIPS AND *Sidelights*



Off for Grasshopper Glacier! This mountain adventure starts from Shaw's Camp at Cooke City, Montana, on the new Red Lodge Highway. Cost, \$7 for one; \$6 each for two or more persons.

Grasshopper Glacier, curiosity of the Beartooth Rockies, contains millions of ice-entombed grasshoppers caught ages ago in a mountain blizzard.

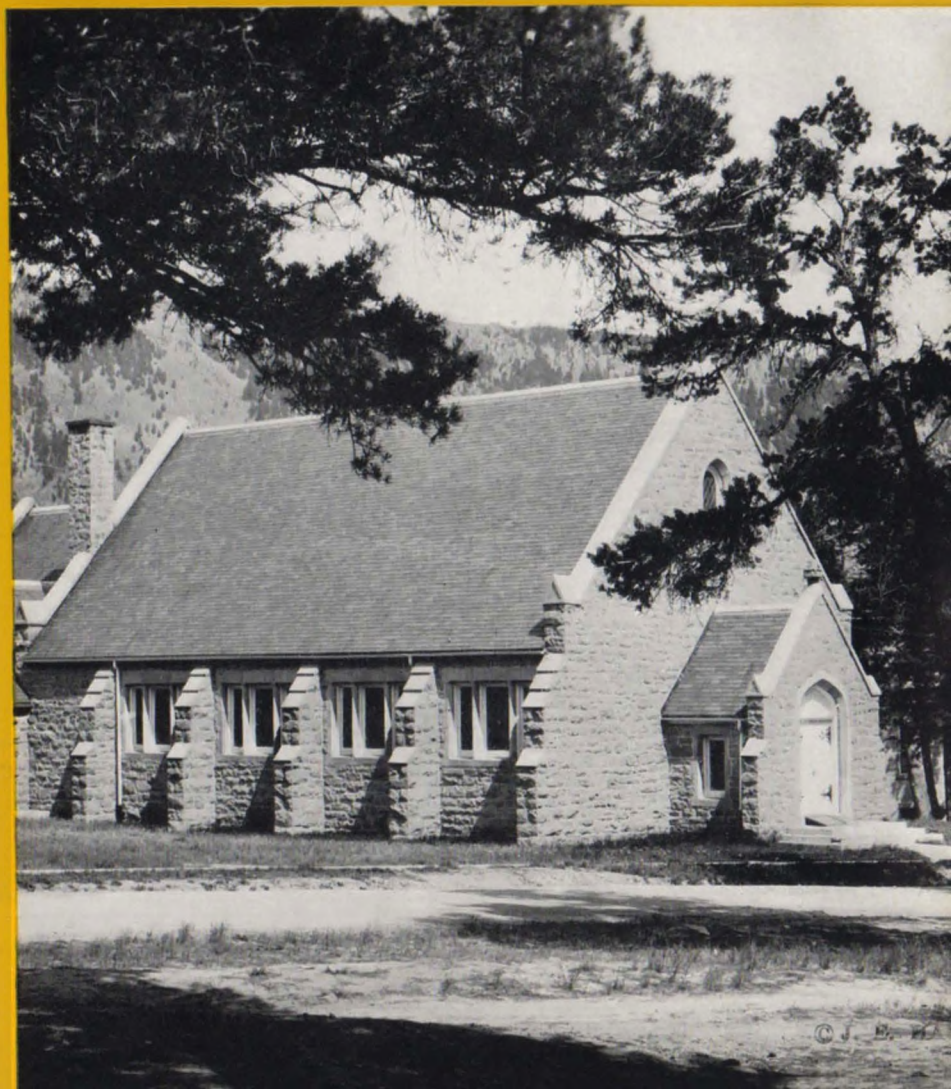




Above—All Yellowstone Park can be seen from Mount Washburn, 10,317 feet, the highest mountain in the park which can be ascended by motor. It is near Grand Canyon. Below—Spirals of the Mount Washburn highway command views of five mountain ranges, some more than 100 miles away! Sidetrip fare with park tour \$2; separate, \$4.



Typical Yellowstone Park Rangers, Uncle Sam's hosts to thousands of visitors from all over the world.



Yellowstone Park Chapel at Mammoth Hot Springs. Open to the use of all denominations for religious services.



WILD BUCKWHEAT



INDIAN
PAINT BRUSH



GENTIAN



LUPINE



ASTER



GERANIUM

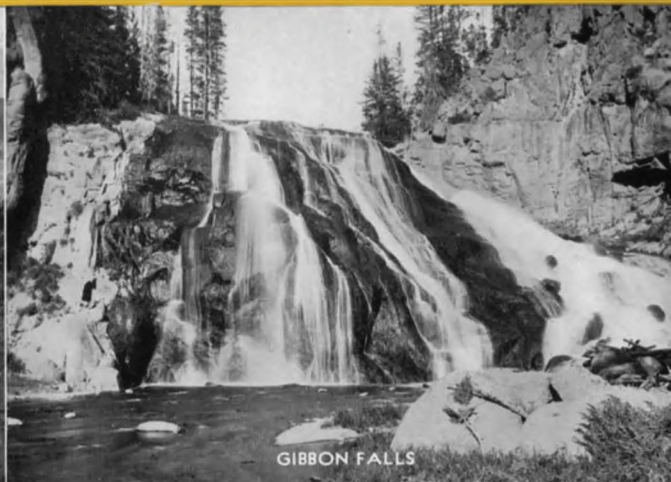
Seven hundred fifty varieties of wild flowers have been observed and classified by Park Naturalists. Most of them are in bloom during July when the Park is a veritable flower garden, gay colors adorning every road and trail. Some of the more common varieties are shown here.

Thirteen major waterfalls and cascades are seen from the route of the regular park tour. On every road throughout the Park Loop the traveler is rewarded by vistas of unspoiled wilderness in which foaming mountain streams play no small part.

© HAYNES



RUSTIC FALLS



GIBBON FALLS



FIREHOLE CASCADE



KEPLER CASCADE



VIRGINIA CASCADE



Top—Typical scene when a "park train" reaches Wonderland. Here is shown the Gardiner, Montana, station—the northern entrance.

Picture group below—Comforts of clean, cool, air-conditioned train travel range from standard sleeping cars to deluxe coaches, delicious dining car food and club lounge in the observation car.

MOST DIRECT AND FASTEST SERVICE TO *Yellowstone Park*



FROM east or west, north or south, Burlington-Northern Pacific service takes you quickly and comfortably to Yellowstone. Whether your trip is to Yellowstone Park exclusively or economically embraces other outstanding scenic areas of the West a selection of favorable routings is available.

The "North Coast Limited," premier Northern Pacific transcontinental train, serves all the principal gateways of the Park. Fully air-conditioned, it carries through Pullmans from Chicago by way of St. Paul and Minneapolis direct to Gardiner, Red Lodge, Cody and Bozeman, making direct connection at these gateways with the big yellow motors of the Yellowstone Park Company.

Enroute it traverses an interesting country — the Upper Mississippi Valley, Minnesota's wooded farmlands, the great plains and eroded Bad Lands of North Dakota and finally the frontier Yellowstone River Valley and the Rockies.

The air-conditioned "Adventureland" of the Burlington Route gives St. Louis, Kansas City, St. Joseph, Omaha, Lincoln and their connecting points a short diagonal route to the Park by way of Billings, Montana. Through Pullman service between Chicago, Omaha, Lincoln and Cody with convenient car to car transfer enroute from St. Louis and Kansas City.

The "Adventureland" spans a picturesque old Indian country, skirts the Black Hills of South Dakota and the romantic Big Horn Mountains of Wyoming. Near Billings it traverses the historic Custer Battlefield.

The "Buffalo Bill" of the Burlington Route provides fast schedule between Denver and the Cody Gateway of the Park. At Denver it makes agreeable connections with Burlington trains from the East (including the celebrated Denver Zephyrs) and Colorado & Southern trains from Texas and intermediate points. Its route lies in the shadows of the peaks of the Colorado Rockies and through the Teapot Dome country of Wyoming, the Wind River Canyon of the same state and the great cattle ranch areas.

Starting anywhere from the east, south, southeast or central west you can travel via one of these crack flyers to the Park and leave on one of the others, making your trip a grand circle tour, often at no extra railroad fare.

From Portland, Tacoma, Seattle, Spokane and other Pacific Northwest points the eastbound "North Coast Limited" provides direct access and complete travel comfort to the Park. It leaves coast points in the evening and reaches the Park the second morning.

SLEEPING CAR SERVICE

The Burlington-Northern Pacific has developed and operates the most complete system of trains and Pullman routes to and from Yellowstone both West-bound and Eastbound between the following points:

TO GARDINER, RED LODGE, BOZEMAN GATEWAYS

From Chicago via St. Paul-Minneapolis
From Chicago via Omaha and Billings
From Chicago via Omaha, Denver and Billings
From St. Louis via St. Paul-Minneapolis
From St. Louis, Kansas City and St. Joseph via Billings
From St. Louis, Kansas City and St. Joseph via Denver and Billings

On board trains, passengers will enjoy the excellent meals of Northern Pacific and Burlington diners at very moderate prices.

From Denver via Billings
From Seattle, Tacoma, Portland and Spokane
(To Red Lodge via Billings)

TO CODY GATEWAY

From Chicago via St. Paul-Minneapolis
From Chicago via Omaha and Billings
From Chicago via Omaha and Denver
From St. Louis via St. Paul-Minneapolis
From St. Louis, Kansas City and St. Joseph via Billings
From St. Louis, Kansas City and St. Joseph via Denver
From Denver (direct)
From Seattle, Tacoma, Portland and Spokane—
via Billings

—This service is available in the opposite direction.—



Emigrant Peak, landmark since frontier days, guards the northern entrance, Gardiner Gateway. It is one of the most prominent peaks in the Absaroka Range, skirting the eastern flank of Paradise Valley south of Livingston, Mont.

Information OF GENERAL INTEREST



HOTEL AND LODGE RATES

For the 1938 Season.		
Hotel Accommodations	For standard 3½-day tour	Lodge Accommodations
One or both ways via		
\$42.50 - - -	Gardiner or Cody Gateways - - -	\$40.50
One way via		
49.00 - - - - -	Red Lodge Gateway - - - - -	47.00
One way via		
47.50 - - - - -	Bozeman Gateway - - - - -	45.50
Cost per person for		
6.50 - - - - -	each additional day - - - - -	4.50

These rates include auto transportation, meals and lodging; in hotels, two persons to a room without bath. Hotel rooms with bath cost \$1.00 to \$3.00 more depending on location and class of room selected. For single occupancy of a room, \$7.00 per day without bath; \$8.00 to \$9.00 per day with bath.

Lodge accommodations provide meals in the main lodge buildings and sleeping quarters in nearby cabins, for one, two or more guests.

YELLOWSTONE—COLORADO

FOR THE SAME RAIL FARE passengers holding tickets reading via Burlington from or through Chicago, St. Louis, Kansas City or Omaha to the Yellowstone Gateways (Gardiner, Red Lodge, Cody or Bozeman), may if they wish, include Denver and the colorful Colorado Rockies.

For example: ticket may read Chicago to St. Paul via C.B.&Q.; St. Paul to Gardiner via Northern Pacific; Cody to Denver via C.B.&Q.-C.&S.; returning Denver to Chicago via C.B.&Q. The route from Cody to Denver is through the scenic Wind River Canyon, Thermopolis, Casper and Cheyenne and offers

opportunity to easily and economically tour Rocky Mountain National (Estes) Park by entering through any of its main gateways, Ft. Collins, Loveland, Longmont or Boulder and returning to any of the other gateways or to Denver. The cost of this motor side trip through Rocky Mountain Park is \$8.00. Meals and lodgings at any of the hotels, inns or lodges in the park are extra.

Thousands of people each year take advantage of this favorable routing arrangement to combine a tour of Yellowstone with a visit to Rocky Mountain Park.

YELLOWSTONE AND OTHER PARKS

Yellowstone Park is so situated and service to and from the park is so varied that it may conveniently and at low cost be included in tours to other national parks or on transcontinental trips. Ask your ticket agent or any of the Burlington-Northern Pacific travel representatives listed on page 64 of this book.

TROUT FISHING

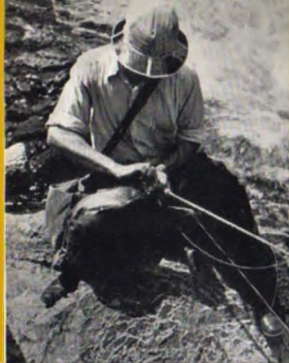
Of all the outdoor activities of park life, trout fishing in mountain waters is one of the most alluring. No license is required within the park limits. The following varieties are found in most of the park waters: Cutthroat

Please consult the supplement that accompanies this booklet, for complete train schedules and other valuable details which will assist you in planning your Yellowstone vacation.



Devils Slide, blood-red stone formation, is seen from Northern Pacific train windows just before entering Gardiner. The 54-mile trip from Livingston to the Park boundary is a scenic delight unsurpassed in the American Rockies.

INFORMATION OF GENERAL INTEREST



(native), Loch Leven, Eastern Brook, Rainbow, Mackinaw, Rocky Mountain Whitefish and Grayling. You can fish for trout in most any of the park rivers or lakes, Lake Yellowstone being particularly good, but if you wish to know really royal sport allow extra time in addition to that required for the park tour and seek remote waters in the mountain fastnesses. Tackle is obtainable at stores in the park or may be rented at Hotels and Lodges.

Frequent excursions are made from Canyon to Lake Yellowstone and from Old Faithful to Shoshone Lake for big trout. These excursions are bulletined in the various Hotels and Lodges and the cost is very nominal, varying with length of stay and number of persons in the party.

OPPORTUNITIES FOR STUDY

The National Park Service has established museums at Mammoth Hot Springs, Norris Geyser Basin, Old Faithful, Fishing Bridge and Madison Junction. Each deals principally with the phenomena and data of its locality and offers unlimited opportunity for study and information gathering. The Ranger Naturalists also conduct free lectures at various points in the park.

LARGEST OF NATIONAL PARKS

Yellowstone is the largest and most famous as well as the first of our National Parks. Approximately one and one-half times as large as the state of Delaware, enclosing 3,471 square miles of scenic natural wonders, it lies in the northwest corner of Wyoming and borders into Idaho and Montana.

In Yellowstone the National Park idea was born in 1870 and the area was set aside as public domain by act of congress in 1872. It contains probably not less than 10,000 thermal features of all kinds, mountains, forests, glaciers, rivers, waterfalls, petrified trees, canyons and gem-like lakes. More wild animals and birds and a greater variety of both inhabit its confines than any other park in America.

Yellowstone Park lies in the center of a great area of National forests containing some three million acres and extending far into Wyoming, Montana and Idaho. It is almost completely surrounded by towering mountain ranges, inaccessible in most places except for the spectacular approaches which scale these mountain barriers to provide entrance to wonderland. Its system of roads is adequate and good, yet it has been said that 100 feet from the road one encounters virgin wilderness, unspoiled and unmarked by man, except for a neat sign here and there or a well-marked forest trail.

Other areas of the earth may be crowned with the magnificence of mountains, valleys, shimmering waters and green forests. But in Yellowstone these splendors are haunted by ghostly geysers, steaming landscapes, water boiling in the earth and similar mystical manifestations. There you not only stand in rapt admiration of creation but you look in awe at its processes.

While the standard park tour embraces the points of principal interest, we recommend longer stays. A week, a month or a whole season cannot exhaust the wonders of Yellowstone. Come and stay as long as you can.



Top—Burlington Inn and Station, Cody, Wyoming, serves as both Yellowstone Gateway and hostelry.
 Center—Buffalo Bill Statue, Cody, Wyoming, which perpetuates the memory of the town's distinguished frontiersman, Col. William F. Cody, is seen from park buses.
 Bottom—Buffalo Bill Museum at Cody contains many relics of the Old West.

INFORMATION OF GENERAL INTEREST

Chimney Rock on the Cody Road, one of the many rock formations which fringe the red canyon of the Shoshone River in the fantastic Buffalo Bill country.

ROADS IN THE PARK

Yellowstone's Grand Loop road extends for approximately 145 miles within the park boundaries, mostly oiled and hard surfaced. Distances between some of the principal points are:

Gardiner Gateway to Mammoth Hot Springs.....	5 miles
Mammoth Hot Springs to Old Faithful.....	51 miles
Old Faithful to West Thumb (Yellowstone Lake).....	17 miles
West Thumb to Lake Hotel.....	19 miles
Lake Hotel to Canyon Hotel.....	16 miles
Canyon Hotel to Mammoth Hotel.....	40 miles
Canyon Hotel to Old Faithful.....	41 miles

* * *

Red Lodge to Grand Canyon.....	121 miles
Cody to Lake Hotel.....	80 miles
Bozeman to Old Faithful.....	129 miles

WILD ANIMAL CENSUS

Recent official estimates of the largest species of wild animals within the confines of the park place their numbers as follows:

Elk (Wapiti).....	12,800	Grizzly bear.....	290
Buffalo.....	800	Mule deer.....	900
Pronghorn		Moose.....	700
antelope.....	630	Big horn sheep.....	200
Black bear.....	520		

Many varieties of smaller animals such as beaver, porcupine, lynx, coyote, marmot and fox are so numerous no accurate count has been made.

More than 200 species of birds make their homes in the park—geese, ducks, pelicans, pheasants, eagles, ospreys, gulls, hawks, owls, ravens, jays, blackbirds, magpies, meadow larks, robins and many others. Even some of the rare trumpeter swans, almost extinct, have made their home in Yellowstone.

YELLOWSTONE'S VERNACULAR

Yellowstone has a vocabulary all its own. Probably inspired by the vacation spirit of light-hearted fun, its usage has become a part of park life and visitors always enjoy their stay in Yellowstone even more when they learn the local "language":

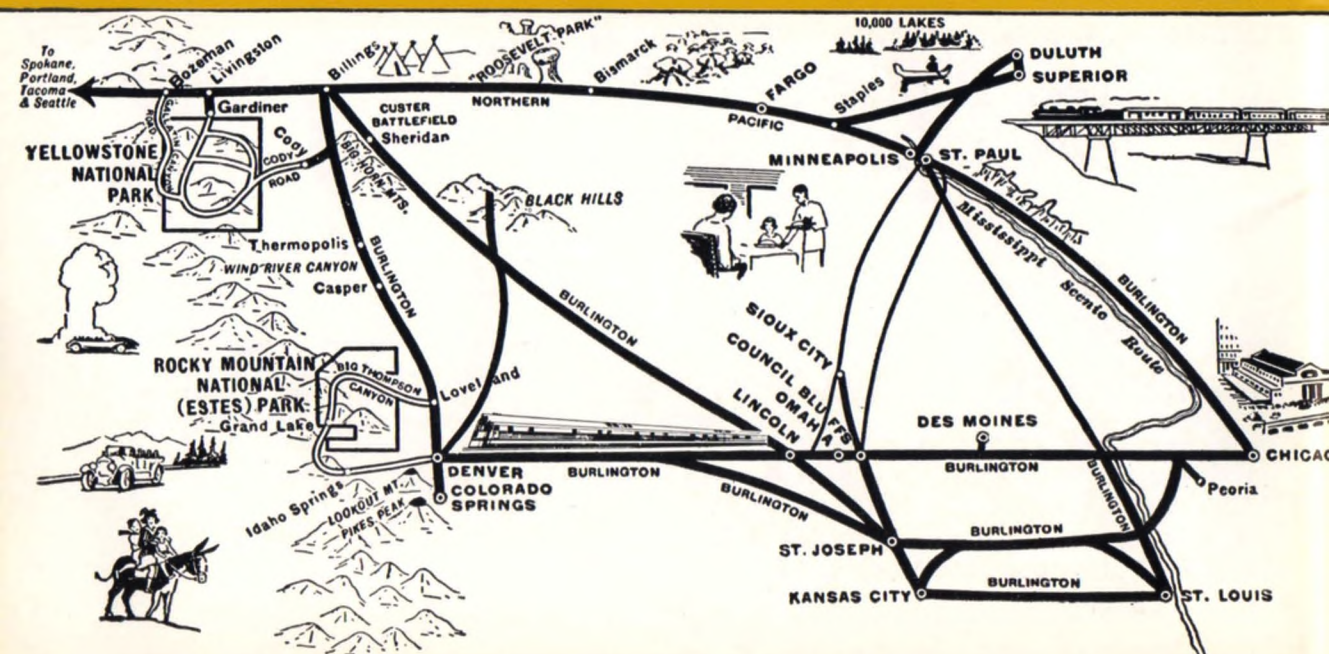


Dudes—All tourists of both sexes in the park
 Savages—All lodge, hotel and transportation employees
 Heavers—The girls who wait on tables
 Pearl Divers—The dish washers
 Pillow Punchers—Girls who make up the beds
 Pack Rats—Porters at hotels and lodges
 Gear Jammers—Drivers of the Yellowstone buses
 Wranglers—Men who look after the horses
 Song Wranglers—Recreation leaders for community singing
 Ninety-day Wonders—Rangers who police the park and act as guides
 Sagebrushers—Tourists using their own outfits and camping in the sagebrush.
 Rotten-logging—Two alone, moonlight and a log to sit on.
 Effected by rangers and heavers. Dudes are not barred
 HAYNES PICTURE SHOPS, conveniently located in hotels and lodges and at other vantage points in the park, sell pictures, albums, guide books, post cards, and camera supplies. Also photo printing and developing service.

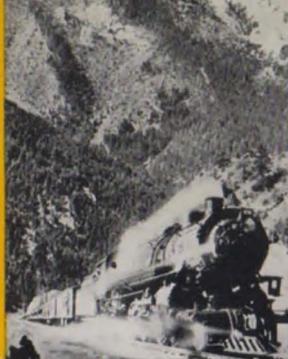


Beauty in high places on the new Red Lodge Highway. This view shows part of the second and third switch-backs above Rock Creek Canyon.

With their own rails all the way from Chicago, St. Louis, Omaha and Kansas City to Gardiner, Red Lodge, Cody, Bozeman and Denver, the Burlington-Northern Pacific offer the maximum diversity of scenic routes to and from Yellowstone.



BURLINGTON Escorted



Tours

VACATIONS WITHOUT A CARE—NOTHING TO DO BUT HAVE A GOOD TIME

SEVERAL times each week during the Park season, escorted all-expense tours leave Chicago and St. Louis for congenial, care-free trips to and through Yellowstone.

Every detail of each tour is carefully planned in advance. Train riding is in special, air-conditioned Pullmans; motor cars await at hotel doors and station platforms; luggage disappears when requiring carrying and magically reappears when needed; all bills are paid by the capable escort who serves as business manager, guide and host.

A lump sum paid in advance covers all necessary expenses from start to finish. You see the most, in the best way, in the least time. The cost is no more than if you made the same trip independently.

This sound, sensible travel plan, founded in 1924 and based upon the experience of entertaining thousands of vacationists, offers tours of various lengths to Yellowstone, and tours combining Yellowstone with the Colorado Rockies, the Black Hills, Glacier National Park, the Canadian Rockies, the Pacific Northwest, and other famous vacation regions.

*Illustrated booklets containing full details of this
summer's plans for these fascinating traveling house
parties will be sent upon request.*



Address R. S. CAIRD, Manager,
Burlington Escorted Tours, 547 W.
Jackson Boulevard, Chicago, Ill.

BURLINGTON-NORTHERN PACIFIC TRAVEL BUREAUS AND TICKET OFFICES

ATCHISON, KANSAS, Burlington Route Second and Main Sts., B. G. McCarty.....	Commercial Agent	MILWAUKEE, WIS., Burlington Route 231 West Wisconsin Ave., C. J. Leydon.....	General Agent
ATLANTA, GA., Burlington Route, 518 Healey Bldg. W. T. Vardaman.....	General Agent	Northern Pacific Ry., 1418-19 Majestic Bldg. R. L. Kelly.....	General Agent
BILLINGS, MONT., Burlington Route, 15 No. Broadway L. W. Johnston.....	Div. Frt. and Pass. Agt.	MINNEAPOLIS, MINN., Burlington Route, 90 S. 7th St W. R. Burgess.....	General Agent
Northern Pacific Ry. J. W. Overman.....	Dist. Frt. and Pass. Agt.	Northern Pacific Ry., 701 Marquette (Roanoke Bldg.) C. S. Kirkland.....	General Agent
BOSTON, MASS., Burlington Route, 80 Boylston St. F. F. Johnson.....	General Agent	MOBILE, ALA., Burlington Route, 203 First Nat'l Bank Bldg. Annex. H. G. Brenner.....	Trav. Frt. and Pass. Agt.
Northern Pacific Ry., 236 Old South Bldg. Jared Jernegan.....	Dist. Pass. Agt.	NEW ORLEANS, LA., Burlington Route, 228 Baronne St. J. M. McDermott.....	General Agent
BUFFALO, N. Y., Northern Pacific Ry. 716 Ellicott Square, C. W. Beardsell.....	Dist. Pass. Agt.	NEW YORK, N. Y., Burlington Route, 500 Fifth Ave. M. J. Fox.....	Dist. Pass. Agt.
BURLINGTON, IOWA, Burlington Route J. J. Teeter.....	Div. Pass. Agt.	Northern Pacific Ry., 560 Fifth Ave. H. M. Fletcher.....	Asst. Gen. Pass. Agt.
CASPER, WYO., Burlington Route, Burlington Depot O. C. Wallace.....	Div. Frt. and Pass. Agt.	OAKLAND, CAL., Burlington Route 512 Central Bank Bldg., V. A. Kulberg.....	Commercial Agent
CHEYENNE, WYO., Burlington Route, Burlington-C. & S. Station W. T. Walsh.....	General Agent	OKLAHOMA CITY, OKLA., Burlington Route 856 First National Bldg., F. W. Werner.....	Commercial Agent
CHICAGO, ILL., Burlington Route, 179 W. Jackson St. S. J. Owens.....	General Agent	OMAHA, NEB., Burlington Route, 301 So. Sixteenth St. J. W. Sharpe.....	General Agent
547 W. Jackson Blvd. P. N. Butzen.....	Traveling Passenger Agent	1004 Farnam St., C. C. Bradley.....	Div. Pass. Agt.
Northern Pacific Ry., 73 East Jackson Blvd. G. W. Rodine.....	Gen. Agt., Pass. Dept.	PADUCAH, KY., Burlington Route, 706-707 City National Bank Bldg. V. B. Budde.....	Commercial Agent
CINCINNATI, OHIO, Burlington Route 505 Dixie Terminal Bldg. J. C. Boyer.....	General Agent	PEORIA, ILL., Burlington Route, 301 So. Jefferson Ave. W. A. Stingley.....	General Agent
Northern Pacific Ry., 615 Gwynne Bldg. R. H. McCurdy.....	General Agent, Pass. Dept.	PHILADELPHIA, PA., Burlington Route, 215 No. American Bldg. C. J. Smith.....	General Agent
CLEVELAND, OHIO Burlington Route, 1033 Terminal Tower Robert Berman.....	General Agent	Northern Pacific Ry., 926 Fidelity-Philadelphia Tr. Bldg. B. M. Decker.....	General Agent
Northern Pacific Ry., 1334 Terminal Tower Bldg. W. Adamson.....	General Agent	PITTSBURGH, PA., Burlington Route, 1728 Koppers Bldg. S. S. Hankis.....	General Agent
CLINTON, IOWA, Burlington Route, 404 Wilson Bldg. W. A. Carlson.....	Commercial Agent	Northern Pacific Ry., 608 Park Building C. T. Penn.....	General Agent, Passenger Dept.
CODY, WYO., Burlington Route, T. F. Kling.....	Agent	PORTLAND, ORE., Northern Pacific Ry., 707 American Bank Bldg. F. J. Berry.....	Asst. Gen. Frt. and Pass. Agent
COLORADO SPRINGS, COLO., Burlington Route Exch. Nat'l Bank Bldg., R. T. Fox.....	General Agent	H. G. Smith.....	General Agent, Passenger Dept.
COUNCIL BLUFFS, IOWA, Burlington Route A. N. Kolb.....	Commercial Agent	Burlington Route, 217 American Bank Bldg. O. G. Hagemann.....	General Agent
DALLAS, TEXAS, Burlington Route, 701-2 Kirby Bldg. T. V. Murray, Jr.....	General Agent	QUINCY, ILL., Burlington Route, 400 Maine St. B. R. Newlon.....	Div. Frt. and Pass. Agent
Northern Pacific Ry., 901 Southwestern Life Bldg. Chas. Sorg, Jr.....	Southwestern Agent	ROCK ISLAND, ILL., C. B. & Q. Station C. E. Carlson.....	Division Freight Agent
DAVENPORT, IOWA, Burlington Route Front and Harrison Sts. W. M. Baker.....	Commercial Agent	SALT LAKE CITY, UTAH, Burlington Route 218 Kearns Bldg., J. H. Gregory.....	General Agent
DEADWOOD, S. D., Burlington Route, 47 Sherman St. D. H. Crary.....	Div. Frt. and Pass. Agt.	SAN FRANCISCO, CAL., Burlington Route, 999 Monadnock Bldg. M. B. Baker.....	General Agent
DENVER, COLO., Burlington Route, 901 Seventeenth St. F. W. Johnson.....	General Agent	Northern Pacific Ry., 657 Market St. R. J. Tozer.....	General Agent
Northern Pacific Ry., 543 Railway Exch. Bldg. L. A. Anderson.....	Traveling Freight Agent	SCOTTSBLUFF, NEB., Burlington Route G. F. Jones.....	Executive General Agent
DES MOINES, IOWA, Burlington Route, 6th and Mulberry D. A. Coffeen.....	City Passenger Agent	SEATTLE, WASH., Northern Pacific Ry., 200 Smith Tower C. L. Townsend.....	General Passenger Agent
Northern Pacific Ry., 328 Des Moines Bldg. Frank Harlan.....	Dist. Pass. Agt.	Burlington Route, 1401 Dexter-Horton Bldg. A. R. Brown.....	General Agent
DETROIT, MICH., Burlington Route, 704 Transportation Bldg. A. G. Matthews.....	General Agent	SHERIDAN, WYO., Burlington Route D. Irwin.....	Agent
Northern Pacific Ry., 1006-7 Transportation Bldg. Geo. Barnes.....	General Agent	SIOUX CITY, IA., Burlington Route, 518 Nebraska St. W. E. Nicholson.....	General Agent
DULUTH, MINN., N. P. Ry., 334 W. Superior St. N. D. Harding.....	Asst. Gen. Frt. and Pass. Agt.	SPOKANE, WASH., Northern Pacific Ry. 701 Sprague Ave., T. A. Murphy.....	General Agent
GALESBURG, ILL., Burlington Route C. I. Twyman.....	Division Passenger Agent	Burlington Route, 616 Old National Bank Bldg. H. A. Bradt.....	General Agent
HANNIBAL, MO., Burlington Route, Third and Lyon Sts. Paul Anderson.....	Div. Frt. and Pass. Agt.	ST. JOSEPH, MO., Burlington Route, 110 S. Fifth St. S. T. Abbott.....	Division Passenger Agent
HASTINGS, NEB., Burlington Route D. Kastrop.....	Div. Frt. and Pass. Agt.	ST. LOUIS, MO., Burlington Route, 322 No. Broadway C. B. Ogle.....	General Agent
INDIANAPOLIS, IND., Burlington Route 910 Merchants Bank Bldg. W. P. O'Rourke.....	General Agent	Northern Pacific Ry., 440 Boatmen's Bank Bldg. R. K. Cross.....	General Agent
JACKSONVILLE, FLA., Burlington Route 304 Barnett, Nat'l Bank Bldg., T. H. Harrison.....	General Agent	ST. PAUL, MINN., Burlington Route, Sixth and Robert Streets S. L. Mentzer.....	General Agent
KANSAS CITY, MO., Burlington Route, 1031 Grand Ave. J. E. Lynn.....	General Agent	226 Railroad Bldg. Ben W. Wilson.....	District Passenger Agent
Northern Pacific Ry., 116 Railway Exchange Building Neil Baird.....	Gen. Agt. Pass. Dept.	Northern Pacific Ry., Fourth and Robert Sts. M. R. Johnson.....	General Agent, Passenger Dept.
KEOKUK, IA., Burlington Route, Fifth and Johnson Sts. A. C. Maxwell.....	Div. Frt. and Pass. Agt.	TACOMA, WASH., Northern Pacific Ry., 118 S. Ninth St. J. L. Norton.....	Assistant General Passenger Agent
LEAVENWORTH, KAN., Burlington Route Fifth and Choctaw Streets, S. E. Nirdlinger.....	Commercial Agent	Burlington Route, 520 Tacoma Bldg. T. L. Hammer.....	Commercial Agent
LINCOLN, NEB., Burlington Route, Eleventh and P. Streets H. P. Kauffman.....	General Agent	TULSA, OKLA., Burlington Route, 203 Cosden Bldg. A. L. Moore.....	General Agent
LOS ANGELES, CAL., Burlington Route 1010 Van Nuys Bldg., J. L. Dec.....	General Agent	WASHINGTON, D. C., Burlington Route, 309 Woodward Bldg. F. F. Crabbe.....	General Agent
Northern Pacific Ry., 506 Central Bldg. J. C. Spracklin.....	General Agent	WINNIPEG, MAN., Northern Pacific Ry., 204 Paris Bldg. T. J. O'Donnell.....	General Agent
		Burlington Route, 609 Gt. West Permanent Bldg. H. A. McMahon.....	General Agent

Your local railroad agent will gladly tell you about Burlington-Northern Pacific service, or write

M. M. GOODSILL, Gen'l Pass'r Agt.
Northern Pacific Ry., St. Paul, Minn.
C. L. TOWNSEND, Gen'l Pass'r Agt.
Northern Pacific Ry., Seattle, Wash.
E. E. NELSON, Pass'r Traf. Mgr.
Northern Pacific Ry., St. Paul, Minn.

B. L. GARTSIDE, Asst. Gen'l Pass'r Agt.
Burlington Route, Chicago, Ill.
C. J. ROHWITZ, Gen'l Pass'r Agt.
Burlington Route, Omaha, Neb.
A. COTSWORTH, Jr., Pass'r Traf. Mgr.
Burlington Route, Chicago, Ill.

