



Daffodil Fields in Puyallup Valley near Tacoma—The Mountain in the Background.

the downtown district, you can be trolling for salmon off Point Defiance.

Wright Park contains over 300 varieties of trees and shrubberies and in this connection, is one of the largest of its kind in the world. Here swans float gracefully over a placid lake and an afternoon flits by like the tick of a clock. In the immediate vicinity of the city are four freshwater lakes, American, Gravelly, Steilacoom and Spanaway, the shores of which are lined with evergreen trees. Magnificent residences have made these lakes the center of Tacoma's fine home district.

Near Tacoma is Fort Lewis, the largest permanent army cantonment in the United States. This 70,000 acre reservation was the gift of Pierce County to the United States Government at the outset of the World War. It was here that the famous 91st Division was trained for its heroic work on the battlefields of France. The War Department has recently expended \$7,500,000 in the construction of permanent barracks and officers' quarters, hospital and headquarters for the Third Division, several thousand troops of which are allocated permanently to this post.

#### Gateway to the Mountain

Rainier National Park is, of course, the major scenic attraction in the vicinity of Tacoma. It would be idle to attempt to describe it in a few words. It is a land of glaciers, wild flowers, boundless snow fields and primitive forests. The road climbs to a height of 5,557 feet above sea level where, amid wild beauty, nestling on the slopes of the mountain, is Paradise Inn. Here, in an atmosphere of unrestrained freedom, one may still find the comforts of a very modern hotel. Above it towers the brood-

ing presence of the mountain rising to the majestic height of 14,408 feet above the sea. Down its sides imperceptibly move glaciers, which are garnished by an utter profusion of wild flowers. It is said that the mountain exerts a definite influence over the lives of those who reside in its shadow. To see it is to feel, for a moment, the presence of Divinity.

#### City of Beautiful Homes

But it is not alone in scenic grandeur that Tacoma excels. It is a city of beautiful homes and admirable educational institutions. Today there are 38 elementary schools, 2 high schools, 7 junior high schools, the College of Puget Sound, the Annie Wright Seminary and the Pacific Lutheran College, besides a number of private academies and denominational institutions.

A few minutes walk from the city hall brings one to the Tacoma Stadium. This huge bowl has a seating capacity of 40,000 and commands a perfect view of Commencement Bay. Near the Stadium is the State Historical Museum which contains interesting displays of Indian and the early pioneer relics which helps the visitor visualize more clearly the rapid strides made in the West in recent years.

Churches of every denomination, numbering over 145, are represented. The First Presbyterian Church and the First Baptist Church have recently erected, at a combined cost of approximately \$1,000,000, two beautiful edifices that greatly enhance Tacoma's structural attractiveness.

To the sated traveller this city will offer new charms and to him who seeks a new place in which to live, Tacoma holds forth special inducements. Spend a few days here. You'll not be sorry.



A view of the Mountain from Plummer Peak, Rainier National Park.

## Northern Pacific Representatives

INFORMATION about Tacoma or any other point in the Northern Pacific Country will be gladly furnished by any of the following representatives. Consult with them on problems of freight or passenger service:

**Aberdeen, Wash.**—J. Y. Blumstrom, D. F. & P. A., Phone 810.

**Billings, Mont.**—J. W. Overman, D. F. & P. A., Phone 5891.

**Boston, Mass.**—Jared Jernegan, D. P. A., 236 Old South Bldg., Phone Liberty 9699.

**Buffalo, New York**—C. W. Beardsell, D. P. A., 716 Ellicott Square, Phone Washington 6822.

**Butte, Mont.**—W. B. Elliott, G. A.; C. T. Thompson, C. F. & P. A., 405 Metals Bank Bldg., Phone 4359.

**Chicago, Ill.**—G. W. Rodine, G. A.; F. G. Scott, C. P. A.; W. C. Widenhoefer, T. P. A.; H. R. Cotton, T. P. A. Straus Bldg., 73 E. Jackson Blvd., Phone Wabash 1271.

**Cincinnati, Ohio**—R. H. McCurdy, Gen. Agt. Pass. Dept.; A. L. Placke, T. P. A.; J. A. Marshall, T. F. & P. A., 615 Gwynne Bldg., Phone Cherry 5938.

**Cleveland, Ohio**—Willard Adamson, G. A.; C. H. Gaardsmoe, T. P. A., 1334 Terminal Tower, Phone Main 2846.

**Dallas, Texas**—Chas. Sorg, Jr., Southwestern Agent, 901 Southwestern Life Bldg., Phone Y-3667.

**Des Moines, Iowa**—Neil Baird, D. P. A., 328 Des Moines Bldg., Phone 4-1228.

**Detroit, Mich.**—Geo. Barnes, G. A.; L. K. Tannahill, T. P. A.; F. W. Stuart, C. P. A., 1006-7 Transportation Bldg., Phone Randolph 4934-35.

**Duluth, Minn.**—N. D. Harding, G. A. F. & P. A.; A. A. Anderson, C. P. & T. A., City Ticket Office, 334 West Superior St., Phone Melrose 2600.

**Everett, Wash.**—J. B. Hart, General Agent.

**Helena, Mont.**—H. H. Ellsworth, A. G. F. & P. A.; F. J. Elliott, D. P. A., Placer Hotel, Phone 612.

**Kansas City, Mo.**—F. A. Acker, G. A.; Frank Harlan, T. P. A.; J. B. Hinkson, T. P. A., 116 Ry. Exchange Bldg., Phone Main 3141.

**Lewiston, Idaho**—A. F. Shirley, G. A., Phone 1158.

**Los Angeles, Calif.**—J. C. Spracklin, G. A.; J. E. Beatty, C. F. & P. A.; D. F. Walker, T. F. & P. A., 506 Central Bldg., Phone Trinity 2322.

**Milwaukee, Wis.**—R. L. Kelly, G. A.; L. B. Wimsey, T. P. A., 1418 Majestic Bldg., Phone Daly 2815.

**Minneapolis, Minn.**—C. S. Kirkland, G. A.; H. B. Upton, C. P. A., 701 Marquette, Roanoke Bldg., Phone Main 2213.

**C. L. TOWNSEND**  
General Passenger Agent  
Seattle, Wash.

**E. E. NELSON**  
Passenger Traffic Manager  
St. Paul, Minn.

**M. M. GOODSILL**  
General Passenger Agent  
St. Paul, Minn.

**New York City**—H. M. Fletcher, A. G. P. A.; V. L. BeDell, D. P. A.; L. Householder, C. P. A., 560 Fifth Ave., Phone Medallion 3-1720.

**Philadelphia, Pa.**—B. M. Decker, G. A.; L. Herchelroth, T. P. A.; E. K. Kremer, T. P. A., 926-7 Fidelity-Phila. Trust Bldg., 123 So. Broad St., Phone Kingsley 0181-0182.

**Pittsburgh, Pa.**—Clifford T. Penn, G. A., 608 Park Bldg., Phone Atlantic 0306.

**Portland, Ore.**—F. J. Berry, A. G. F. & P. A.; H. G. Smith, G. A. P. D.; C. F. Duffy, C. P. A.; S. F. Fitzpatrick, T. P. A., 707 American Bank Bldg., Phone Broadway 0423.

**St. Louis, Mo.**—R. K. Cross, G. A.; C. R. Throckmorton, T. P. A.; M. F. Connor, T. P. A., 440 Boatmen's Bank Bldg., Phone Garfield 3280.

**St. Paul, Minn.**—M. R. Johnson, G. A. P. D., City Ticket Office, 333 Robert St., First National Bank Bldg.; H. C. Hasberg, T. P. A.; Geo. L. Brooks, D. P. A., Railway Bldg., Phone Cedar 7773.

**San Francisco, Calif.**—R. J. Tozer, G. A.; H. E. Petersen, C. P. A.; W. T. Conkling, T. P. A., 657 Market St., Palace Hotel Bldg., Phone Sutter 1078.

**Seattle, Wash.**—J. L. Burnham, W. T. M.; C. L. Townsend, G. P. A.; K. K. Katz, T. P. A.; L. A. Buck, T. P. A., 200 Smith Tower; N. J. Heuchan, G. A. P. D.; Orville Neer, C. P. A., 1409 Fourth Ave., Phone Elliott 5560.

**Spokane, Wash.**—T. A. Murphy, G. A.; E. F. Baird, C. P. & T. A.; L. R. Fjellman, T. P. A.; M. L. Thomson, C. P. A., 701 Sprague Ave., cor. Wall St., Phone Main 5321.

**Tacoma, Wash.**—J. L. Norton, A. G. F. & P. A.; L. W. Tuttle, C. P. & T. A., 118 South Ninth St., Phone Broadway 1121.

**Vancouver, B. C.**—W. F. Carr, G. A.; W. A. Lemon, C. P. A., 678 Howe St., Room 206, Phone Seymour 7920.

**Victoria, B. C.**—A. C. Stickley, G. A., 912 Government St., Phone Empire 0222.

**Walla Walla, Wash.**—S. J. Miller, D. F. & P. A., Phone 161.

**Winnipeg, Man.**—T. J. O'Donnell, G. A.; L. Cadle, C. F. & P. A., 204 Paris Bldg., Phone 97946-97947.

**Yakima, Wash.**—T. M. Crawford, D. F. & P. A.; C. O. Martin, T. P. A., Phone 9151.

## "North Coast Limited"

Completely Air-Conditioned



# Tacoma







The Tacoma Skyline, from Commencement Bay

## Tacoma, the "Lumber Capital of America"

I will make a place,  
Fit for you and me;  
Green days in forests  
And blue days at sea.

THUS wrote Robert Louis Stevenson. "Green days in forests." The hushed, cathedral silences, the quiet aisles of the great trees where a shaft of sunlight, reaching down like a golden finger, falls in yellow pools on the flower splashed floor. There is heart balm and peace in a forest. Here, if one will listen, he may hear the ticking of the clock of eternity where centuries are but minutes and life, abundant today, had its beginnings in the dim periods of time. "Man cannot be evil and dwell in a forest," a philosopher has said. Those who have felt the magic of the woods recognize the wisdom of this statement. Lofty spires and the far flung spans of magnificent bridges we may construct—"but only God can make a tree." Is it strange, then, that those who live in Tacoma feel that the best of earth's blessings are theirs?

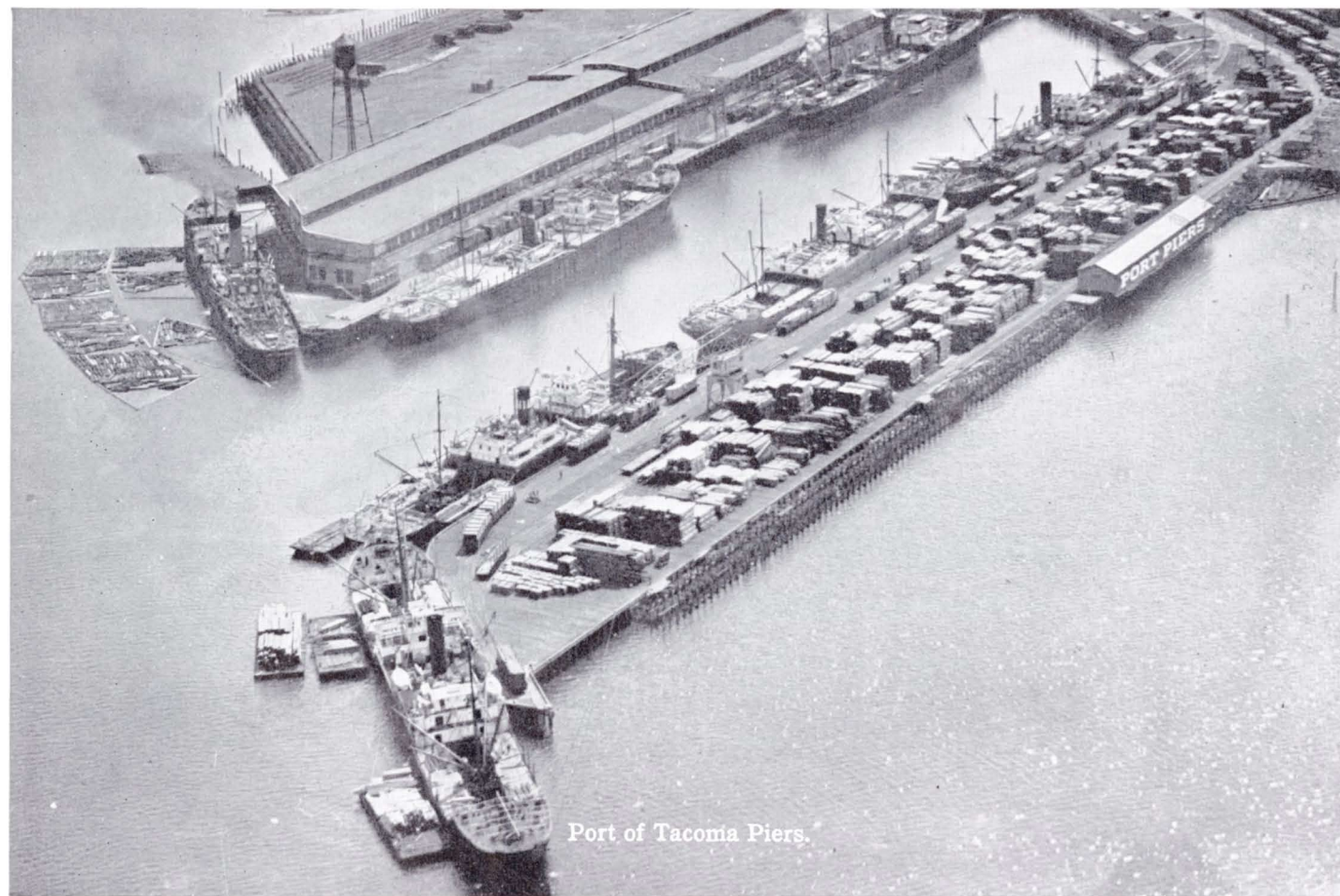
### Lure of the Northwest

Blue days at sea. Have you seen the dawn rushing towards you through the veiling mists of Puget Sound? Have you seen the smoky blue of mid-day lying like a benediction, over the untroubled waters of a bay? Have you seen sunset where yellow disks, like the golden coins of King Solomon's treasure, dance towards you on the crest of every wave? If you haven't much awaits you in Tacoma.

Here is that magic something which is the soul of charm. Here is the very essence of the lure of the Northwest which drew Lewis and Clark through deserts and over mountains. In this particular part of Wonderland is the culmination of that feeling of freedom, that suggestion of adventure, that impression of unspoiled freshness and youth which you have felt since your train plunged through the far reaches of Dakota and Montana. One who dwells in prim and restricted communities, after seeing this portion of the Pacific Northwest, might well long for a sort of Socialism of Nature—a more even distribution of the beauties which have been spilled here with such a lavish hand.

### Ships from Seven Seas

Tacoma, the "lumber capital of America," lies at the gateway of Rainier National Park. With a population of 106,885 and 146,771 in the metropolitan area, Tacoma is built on a series of terrace-like hills and rises, tier on tier, above the blue waters of Commencement Bay. Its harbor is one of the two in the United States which can accommodate ships of any draft. The harbor has approximately sixteen miles of shore line and docking facilities for vessels of all sizes. Ships from the Seven Seas discharge their cargoes here and the visitor senses a curious commingling of the mystery of the Orient and the rushing commerce of the western world. The port is served by four transcontinental railroads, directly connected to its tracks through the City of Tacoma Belt Line Railway. Over seventy



Port of Tacoma Piers.



On the Tacoma Docks.



Point Defiance Park, with Puget Sound in Background

steamship companies operate to and from Tacoma's harbor.

Tacoma is to lumber what Pittsburgh is to steel and Detroit is to the automobile. There are twenty-two lumber mills in the city itself. Tacoma leads the world in the production of fir doors, wood columns, veneer panels and broom handles, and ships its lumber products to every corner of the world. The lumber and forest products manufactured in Tacoma mills during 1937 were valued at \$27,000,000.

The city has become one of the great flour and grain centers of the country, and the Tacoma smelter, the largest smelter of its kind on the west coast, refines ore from Canada, South America and Alaska. One-twelfth of the copper used in the United States is refined in Tacoma. Tacoma is a large railroad center and has the terminal shops of two transcontinental systems. The city is making rapid strides towards the goal of being one of the more important manufacturing centers in the United States. Its furniture factories are rivaling those of Grand Rapids. Davenport, steel beds and springs, mattresses and specially constructed tables, produced in Tacoma, will be found in hotels and homes the world over.

### Abundance of Water Power

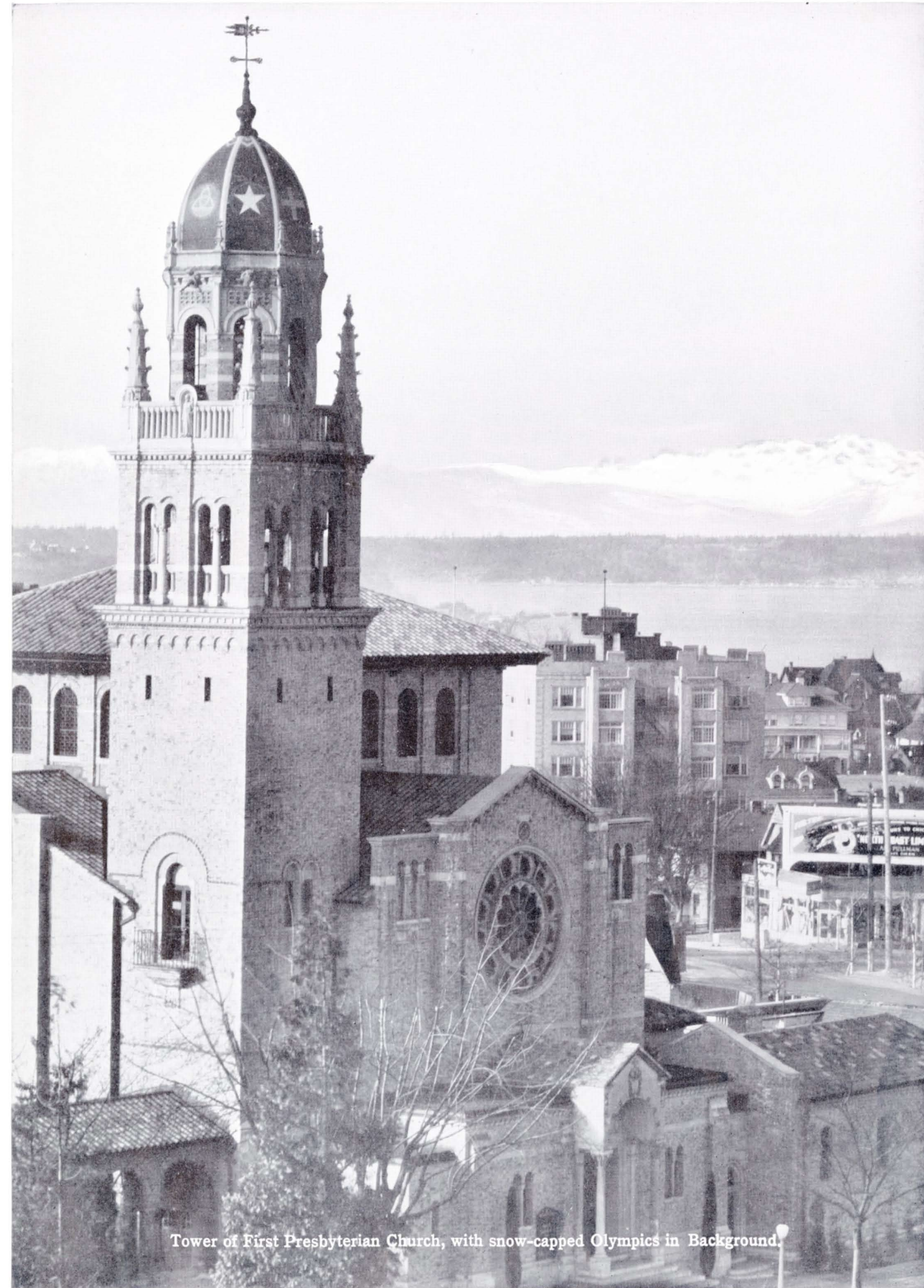
To the industrialist, Tacoma offers an abundant supply of the lowest priced electrical power in the United States. The Nisqually River, with its sources in the glaciers of the Cascade Mountains, supplies Tacoma's first power plant with 32,000 H. P., while the new Cushman Power Plant (130,000 H. P.) is supplied from the snowfields of the Olympic Mountains through a great storage basin in Lake Cushman. In addition, the city has two

auxiliary steam plants of 10,000 H. P. and 25,000 H. P. The almost unlimited resources of private power companies are also available to Tacoma's industries.

### City of Fine Parks

But a city must offer more to the visitor than unparalleled industrial advantages. The stranger naturally asks: "How may I amuse myself? What may I see?" Well, do you like to fish? The tumbling mountain streams teem with trout and Puget Sound is the mecca for salmon fishermen. You'll find better and faster fishing here than you have had in years and tackle, boats and bait are available at low rentals. Boating? You have but to turn the prow of your yacht or motorboat out upon the highways of the Sound and the world and the wonders thereof are yours. Those who love to climb a mountain will find their heart's desire in Rainier National Park and the Olympic National Monument. Hunting of various kinds and exciting quality will be found a short distance from the city.

Tacoma is dotted with parks, each possessing an alluring appeal, particularly Point Defiance. Bounded on one side by Puget Sound, the park covers an area of 640 acres. The many flower gardens, where bloom over 80 varieties of roses, form a striking contrast to the hundreds of acres of virgin forests which lie to the west. Zoological gardens, a remarkable aquarium, tennis courts and the opportunities for salmon fishing in the Sound all help to make Point Defiance one of the most attractive places in the city. This fine park is easily accessible to the business district of Tacoma, being only twenty-five minutes distant by street car and fifteen minutes by auto. Within thirty minutes after leaving



Tower of First Presbyterian Church, with snow-capped Olympics in Background.

