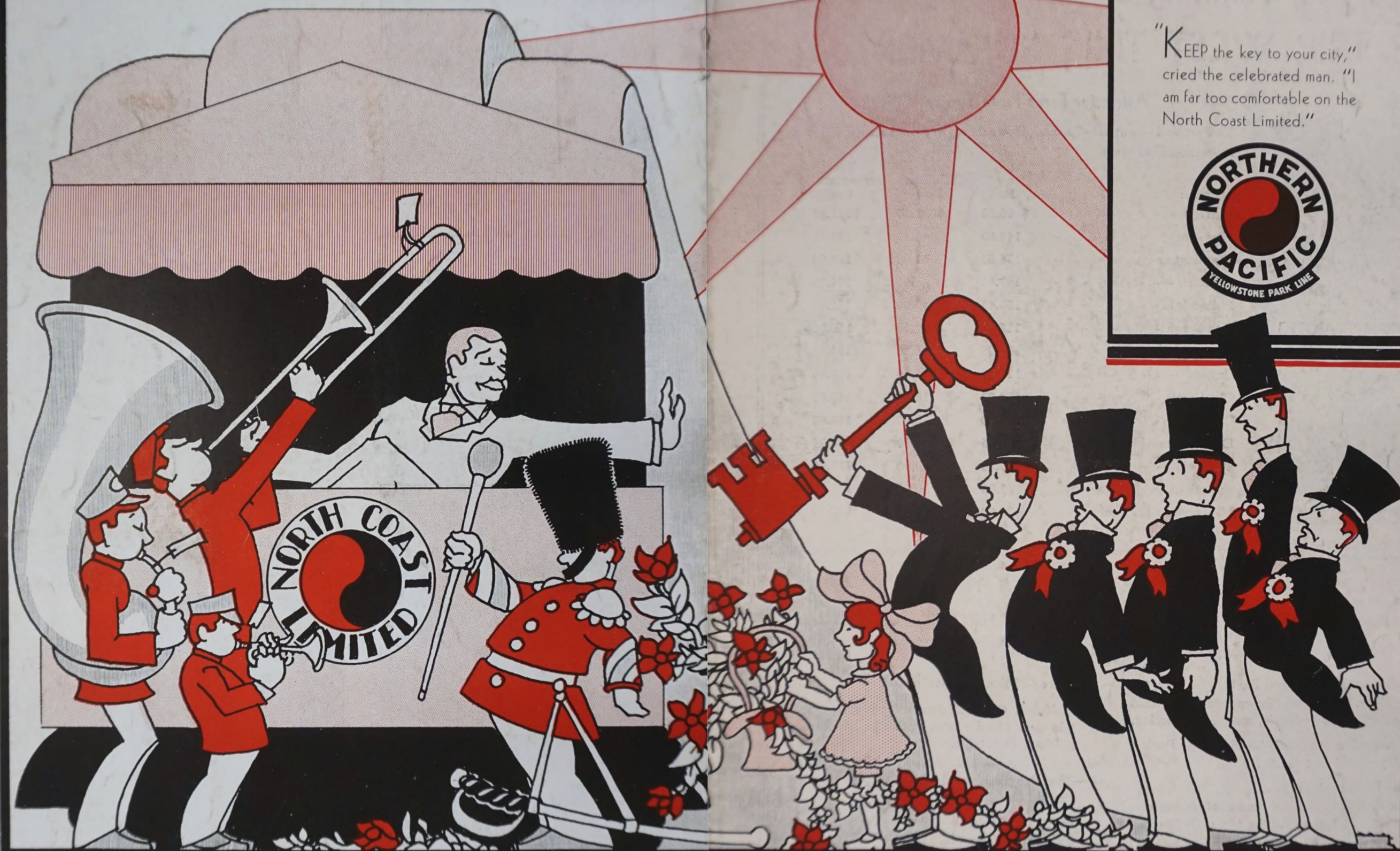


Hilton



"KEEP the key to your city,"
cried the celebrated man. "I
am far too comfortable on the
North Coast Limited."



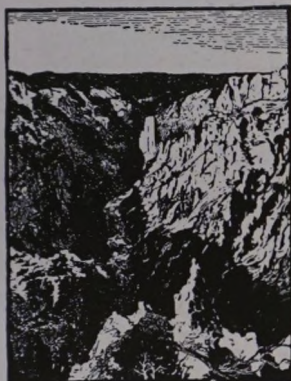
*You, too, will so enjoy the magnificent comforts on the Northern Pacific that you'll hate
to leave us, even to visit the fine cities and the wondrous places of the Pacific Northwest*

Are You Thinking of a TRIP WEST THIS SUMMER?

Attractive Fares From Typical Cities



Travel Safely By Train—
Rest as You Ride.



Yellowstone Grand
Canyon—Worth Crossing
the Continent to see

To Portland—Seattle—Tacoma, Round trip in deluxe air-conditioned Pullmans, first class.

From:	Rail	Pullman Lower	Total Transportation Cost
Chicago - - - - -	\$ 90.30	\$ 31.50	\$121.80
New York - - - - -	144.80	43.50	188.30
Washington - - - - -	136.60	42.00	178.60
Boston - - - - -	151.40	43.50	194.90
Philadelphia - - - - -	139.40	42.00	181.40
Pittsburgh - - - - -	118.50	37.50	156.00
Atlanta - - - - -	116.95	38.50	155.45
Buffalo - - - - -	121.90	38.50	160.40
Cleveland - - - - -	110.80	36.00	146.80
Cincinnati - - - - -	108.00	35.00	143.00
Des Moines - - - - -	80.25	28.50	108.75
St. Louis - - - - -	85.60	30.00	115.60
Kansas City - - - - -	77.93	30.00	107.93
Minneapolis-St. Paul - - -	75.60	26.50	102.10

Fares quoted herein are subject to changes as later passenger traffic, railroad, Pullman and National Park tariffs are published.

IF YOU GO WEST, WE COMMEND TO YOU THESE DELIGHTFUL VACATION STOPOVERS:

1—Yellowstone National Park

3½ days. Total cost of complete tour within the Park \$42.50—hotels, meals, sight-seeing.

2—Sunrise Detour, Rainier National Park

1-day—total cost \$11.50.

3—Red Lodge HIGH Road

One-day. Only \$3.50 for the most thrilling one-day trip in the west. The top of Wyoming-Montana Rockies.

4—Grand Coulee Dam

One-day trip "The 8th Wonder of the World"—America's largest construction project. Costs \$5.00, complete.

5—Gates of the Mountains

Half-day. Only \$2.50 extra for 70-mile motor trip and 15-mile boat cruise in Montana's glorious mountains.

6—The Progressive Modern Cities of the Pacific Northwest

Portland—Spokane—Seattle—Tacoma Sight-seeing trips from \$1.00 up.

7—Dude Ranches

Rest a while at a Montana or Wyoming Ranch. Rates \$35 to \$70 per week.

For Economy With Comfort

Intermediate or Tourist Class Fares

TO: Portland—Seattle—Tacoma, **Round-trip** in air-conditioned new-style Pullman Tourist sleeping cars:

From:	Rail	Pullman Lower	Total Transportation Cost
Chicago - - - - -	\$ 74.00	\$ 16.50	\$ 90.50
New York - - - - -	128.50b	28.50d	157.00
Washington - - - - -	120.30b	27.50d	147.80
Boston - - - - -	135.10b	30.00d	165.10
Philadelphia - - - - -	123.10b	27.50d	150.60
Pittsburgh - - - - -	102.20b	22.50d	124.70
Atlanta - - - - -	100.40b	27.50d	127.90
Buffalo - - - - -	105.60b	24.00d	129.60
Cleveland - - - - -	94.50b	21.50d	116.00
Cincinnati - - - - -	91.70b	21.50d	113.20
Des Moines - - - - -	66.07	14.50f	80.57
St. Louis- - - - -	70.10	14.50f	84.60
Kansas City - - - - -	64.02	14.50f	78.52
Minneapolis-St. Paul - -	61.95	14.50	76.45

- (b) First class fares east of Chicago; tourist class beyond.
 (d) First class Pullman east of Chicago; tourist class beyond.
 (f) Pullman fare from St. Paul only.



Pullman Tourist Sleeping Car

Fares quoted herein are subject to changes as later passenger traffic, railroad, Pullman and National Park tariffs are published.

Pullman Tourist sleeping cars are a western railroad enterprise and are not well known in the East. They are the standard Pullmans of a few years ago, modernized and air-conditioned. They have mohair upholstery, comfortable seats and excellent beds with high standard of blankets, sheets and mattresses. Wash rooms are roomy and well equipped. These cars are not as luxurious as the modern deluxe first class Pullmans but they are very satisfactory to travelers interested in saving a few dollars, yet having all the comforts.

ASK ABOUT TRAVEL COSTS FROM YOUR HOME CITY

No charge for our service. We will gladly plan a special itinerary for you, including the attractions and stopovers that interest you most. Accurate, efficient and prompt service. We have offices in many large cities, including New York, Boston, Philadelphia, Pittsburgh, Buffalo, Cincinnati, Cleveland, Detroit, Milwaukee, Chicago, St. Louis, Kansas City, Des Moines, St. Paul, Minneapolis, Duluth, Seattle, Portland, San Francisco and Los Angeles.



THE NORTHERN PACIFIC RY. IS THE SCENIC ROUTE ACROSS AMERICA

28 RANGES OF MOUNTAINS. PIONEER LINE TO PORTLAND, SEATTLE AND TACOMA

PICTURE STORY OF A TRIP WEST ON THE NORTH COST LIMITED

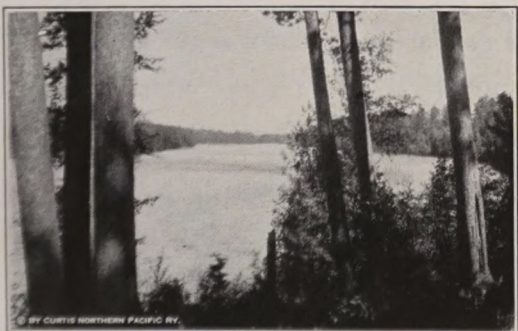
Begins at Chicago Union Station—300 water-level miles along the Mississippi to



St. Paul, capital of Minnesota, then



Minneapolis, milling metropolis



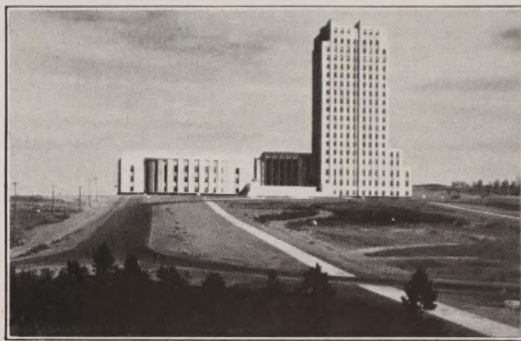
The train skirts dozens of Minnesota's 10,000 lakes, and



Such Meals! N. P. is famous for the best of food.



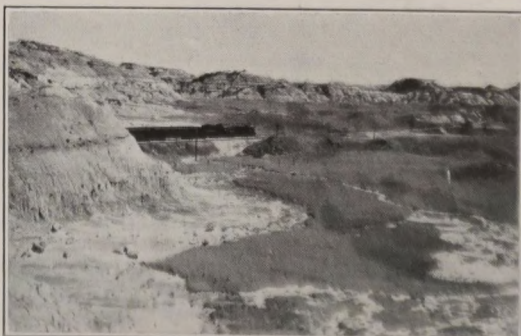
follows the wooded shores of the upper Mississippi. The Northern Pacific has a scenic river course all the way across continent, with 1406 miles of beautiful, varied river landscapes along its tracks.



In North Dakota, there are wheat fields to the horizon and modern cities, including Bismarck with its 21-story state capitol.



The "West Begins" at Mandan, where Sioux Indians dance at the railway station and cordially welcome easterners.



In Western Dakota, the weird colorful Bad Lands are crossed. Fantastic buttes of pink, yellow, red and brown contrast with green valleys and the bluest skies imaginable.



This is cowboy country in western Dakota and eastern Montana and one sees from the train many a cowboy with his cattle and occasionally a herd of wild horses on a nearby hill.



Crazy Mts., break the skyline in eastern Montana. Look north from North Coast Limited train windows, soon after leaving Billings. South from the train, one sees the huge Absaroka Range of the Rockies.



From Billings, side-trip from Northern Pacific main line is recommended for the Red Lodge High Road detour—a magnificent mountain detour topping the Wyoming and Montana Rockies. A day's vacation on this High Road is an inspiring experience.



At Livingston, you are in Yellowstone Park country. A side trip from the Northern Pacific's main line from Livingston to Gardiner and through Yellowstone Park is a grand vacation. The world's greatest and most-loved Park invites you.



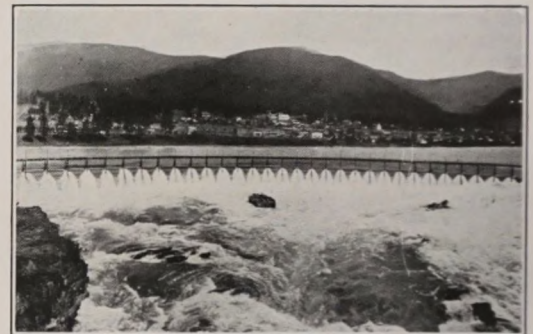
Butte—copper mining city—nothing like Butte in the United States. You see its huge mines and mills and its modern business streets from your train.



Gates of the Mountains—a spectacular 15-mile launch trip on the Missouri River, through deep, beautiful Rocky Mountain Canyons is highly recommended from Helena. You'll be surprised and delighted with a stopover at Helena.



Montana is the state of Mountains and the American Rockies reach their grandest panoramas in western Montana. On the Northern Pacific main line, travelers see mountain scenery at its best! Seldom will you see as attractive a residential city as Missoula, in Western Montana.



Water-power projects are numerous in the West. From North Coast Limited train windows, this great dam at Thompson Falls is a sight to remember.



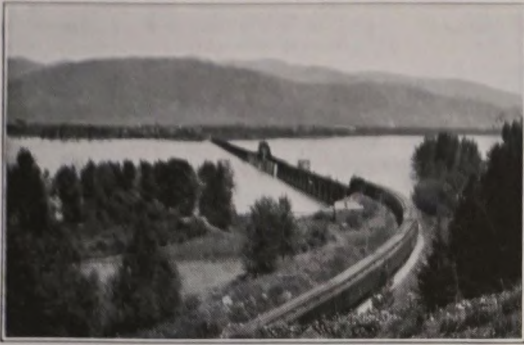
Cabinet Gorge, Idaho. Here the Columbia River cuts through a deep mountain canyon of white-gray granite, topped with evergreens—one of the loveliest canyons of nature. The "Clark's Fork" of the Columbia is followed by Northern Pacific trains for 106 miles through the "Shining Mountains."

Continued on next page

The Northern Pacific Ry. cordially invites you to visit the Northwest. We will appreciate your selection of the Air-Conditioned NORTH COAST LIMITED as YOUR TRAIN

PICTURE STORY OF A TRIP ON THE

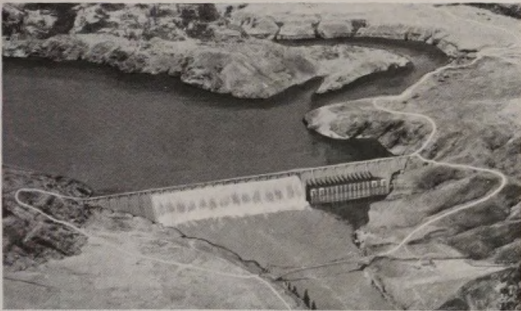
(Continued)



Lake Pend O'Reille, nestling in the Idaho Rockies is one of the most beautiful mountain lakes in the world. On the Northern Pacific main line, you cross this magnificent body of clear water on a mile long trestle.



Spokane, progressive and growing fast, hums with silver mining and irrigation development. Population 115,514.



Grand Coulee Dam—Uncle Sam's "8th Wonder of the World," the largest dam, power and irrigation project ever conceived by man. A breath-taking side-trip from Northern Pacific main line between Spokane and Yakima.



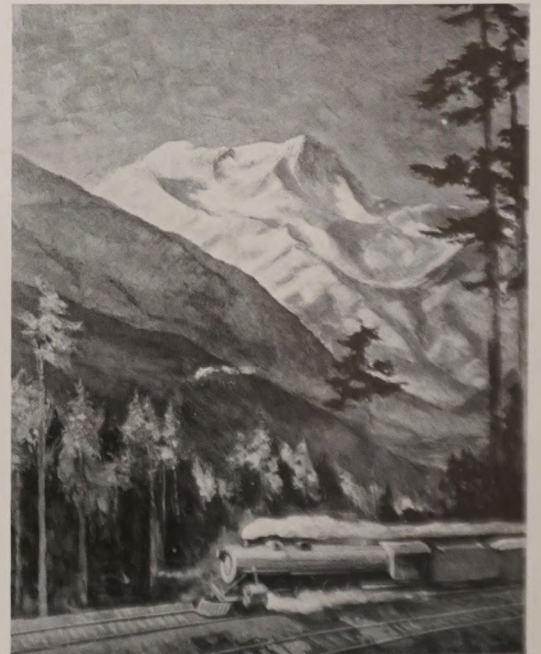
From Yakima, America's greatest National Park bargain—the Sunrise trip to Rainier (14,408 ft.) Here you actually contact Emmons Glacier, largest active glacier in continental United States. This picture shows Mount Rainier with Emmons on its eastern slope.



Seattle, population 365,583, gateway to Alaska and the Orient.



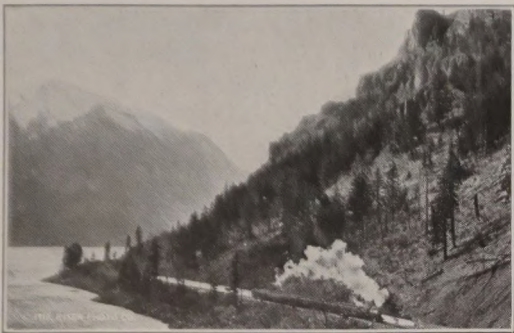
Tacoma, "lumber capital of America." Population 106,885.



Entering Seattle and Tacoma on the Northern Pacific, Mt. Rainier, giant of the Cascades, is seen from the Northern Pacific tracks near Stampede, Washington.



NORTHERN PACIFIC RAILWAY



Enroute to Portland on the North Coast Limited, through the magnificent Gorge of the Columbia.



Portland, City of Roses. Its 301,890 people are frequent hosts to national conventions.



The beautiful Cascades—a copyrighted Northern Pacific Ry. photo.

The Northern Pacific Ry. is the **Scenic Route across America**. 28 Ranges of Mountains. Pioneer line to Portland, Seattle and Tacoma.

For Information

about trips West, please write the undersigned. Your questions are invited.

E. E. NELSON,
Passenger Traffic Manager
Northern Pacific Railway
St. Paul, Minnesota



"Great Big" Baked Potatoes

The Northern Pacific has been famous for two generations for its delicious, amazing Big Potatoes. But this is only one symbol of superlative quality and merit of the Northern Pacific dining car service. You'll find no train meals anywhere to excel those of the Northern Pacific. Ask experienced western travelers—they know. You dine magnificently on the Northern Pacific and the meal prices are low: Breakfasts 50c, 65c, 75c, 85c and \$1.00; luncheons 50c, 75c and \$1.00; dinners 50c, 75c and \$1.25. The very **highest quality** steaks, chops, roasts, fish, poultry, vegetables, fruit and dairy products are served.



Yellowstone Travelers!

Be sure to go in one Park gateway, out another, thereby avoiding duplication of scenery. See more for your money, enjoy more of Yellowstone's wonders. We recommend Gardiner Gateway, Cody Road, the Red Lodge High Road and the Bozeman-Gallatin Road—select two of these gateways, circle Yellowstone Park, and get the utmost in sight-seeing value.